

**EDGE**

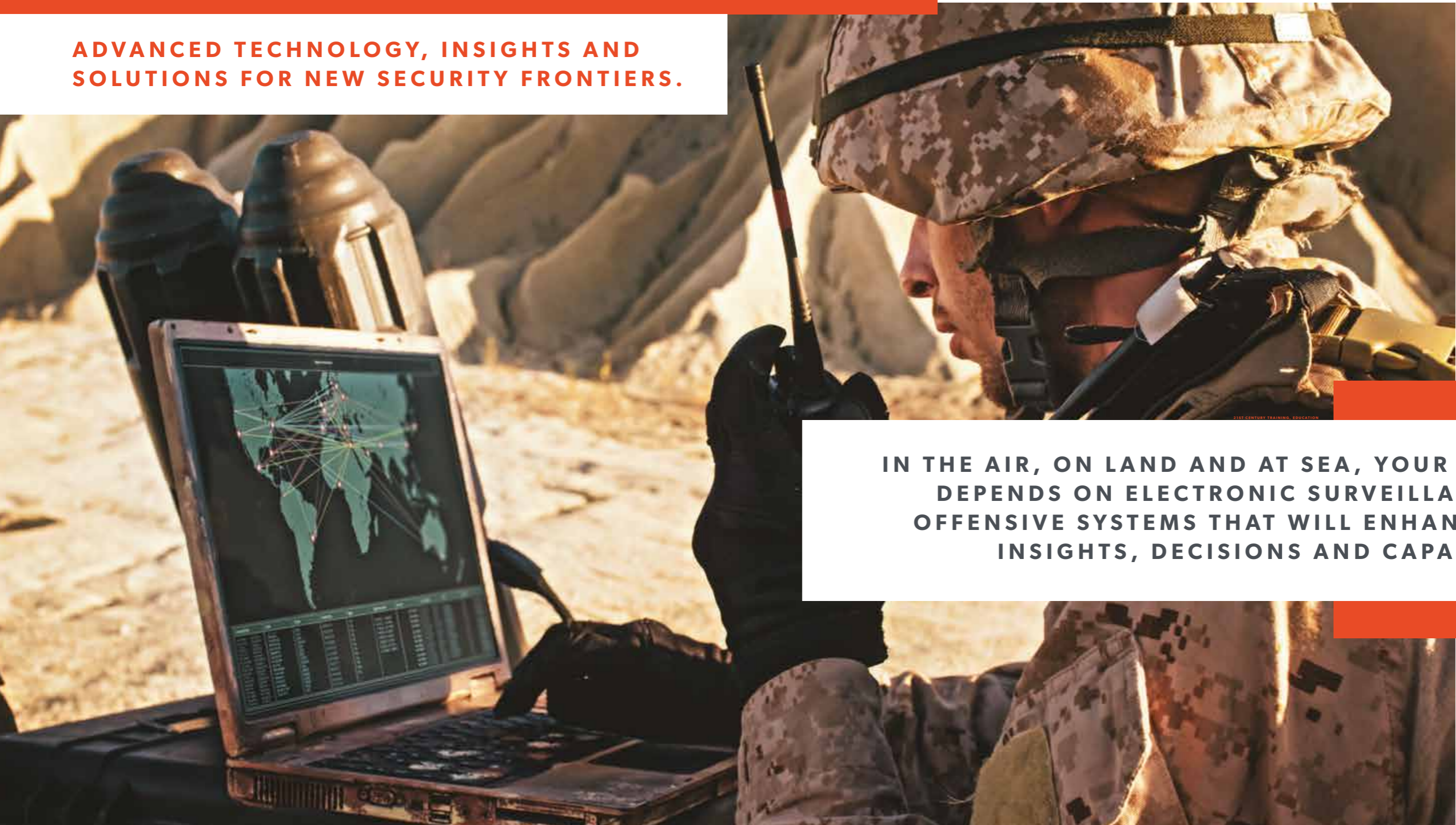
**ELECTRONIC  
WARFARE &  
INTELLIGENCE**

**S E C U R I T Y**

**W I T H I Q \_**

**ADVANCED TECHNOLOGY, INSIGHTS AND SOLUTIONS FOR NEW SECURITY FRONTIERS.**

**IN THE AIR, ON LAND AND AT SEA, YOUR SUCCESS DEPENDS ON ELECTRONIC SURVEILLANCE AND OFFENSIVE SYSTEMS THAT WILL ENHANCE YOUR INSIGHTS, DECISIONS AND CAPABILITIES.**





# SECURITY IS NOTHING WITHOUT INTELLIGENCE.

## TECHNOLOGY, INSIGHT AND TALENT FOR THE DIGITAL AGE.

Today's global security environment has created challenging new frontiers. Frontiers that demand agile, bold and disruptive solutions. Advanced radio, data and radar systems provide the communication, targeting, navigation and sensing backbone that defines modern defence. And control and domination of the electromagnetic (EM) spectrum is now essential to the outcome of every mission, and every future operation.

Meanwhile, a powerful combination of human, communications and machine intelligence is shaping the evolution of long-term defence strategy and shorter-term military tactics. Identifying mission-critical elements from a tsunami of digital chatter and data is now a vital security competency.

At EDGE, our fast-evolving Electronic Warfare & Intelligence cluster is powered by pioneering sector specialists, focused on ensuring your ability to shape and harness the spectrum and analyse its outputs, by providing essential tech, insight, expertise and talent.





## IN NUMBERS

 **02**  
SUBSIDIARIES

 **200+**  
EMPLOYEES

# EDGE

## ABOUT EDGE

We live in an accelerating world. Characterised by uncharted frontiers, the future is empowered by advanced technology that is galvanising a new breed of players. At the edge of these frontiers exist no limits – where boundless opportunities await.

Transforming how we live, and ensuring a more secure future, is what we do. We are EDGE; and our mission is simple: to bring innovative technologies and services to market with greater speed and efficiency.

We will not only revolutionise the defence industry, but we will change its fundamentals. We are the vanguard of the next-generation, of a reimagined sector. We prioritise technology in a non-binary world and seek universal solutions. We work with everyone: big or small, start-up or established, local or global.

**We are EDGE. We enable a secure future.**

# CLUSTER CAPABILITIES



**ELECTRONIC WARFARE THREAT DETECTION**



**ELECTRONIC WARFARE THREAT SUPPRESSION**



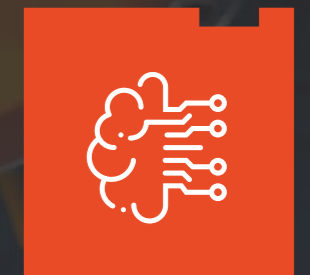
**ELECTRONIC WARFARE THREAT NEUTRALISATION**



**DATA ANALYTICS AND INTELLIGENCE**



**EM-FIELD SECURITY TRAINING**



**INTELLIGENCE TRAINING**



**TALENT IDENTIFICATION, SCREENING AND RECRUITMENT**





AHEAD OF  
THE CURVE —

AHEAD OF THE  
COMPETITION.

**21ST CENTURY TECHNOLOGY,  
TALENT AND TRAINING.**

In fast-moving theatres of operation, we are dedicated to enhancing your capabilities in the EM defence systems and methodologies of the future. Today, we can shore-up your capabilities in security technologies to keep you ahead of the competition. And by providing vital intelligence, we don't just help you anticipate the future, we enable you to shape it.

## TECHNOLOGY

At EDGE, we believe that the agile deployment of sound intelligence results in decisive action. So we put you in control of communications to turn mission outcomes in your favour.

We work to leverage advanced EM technologies designed to be the offensive and defensive backbone of your security communications and intelligence strategy, while our real-time intelligence and analytics helps you to identify mission-critical elements from a universe of data to give you a competitive edge.

## TALENT

Leading-edge EM and intelligence technology is nothing without the people to innovate, develop and harness it to maximum advantage.

To keep you abreast of the continuous cycle of technology escalation, we can help source in-demand technology talent to shape and hone your EM assets and optimise your operations to ensure you stay on-mission.

WHEN YOU NEED TO DO MORE THAN PUT YOUR EAR TO THE GROUND, FAST AND RELIABLE INTELLIGENCE FROM THE ELECTROMAGNETIC ENVIRONMENT WILL GIVE YOU THE ABILITY TO ACT - AND TILT THE BALANCE IN YOUR FAVOUR.

## TOGETHER, WE WORK TO DEVELOP AND HARNESS:



Electronic Attack technologies including Directed-Energy Weapons



Electronic Protection and counter-measures



Electronic Warfare Support systems

## TRAINING

At EDGE, our training and force enhancement services include EM-field security training to help build force capacity. Our intelligence training in fields such as defence and national security covers disciplines from signal and human intelligence to open-source and cyber intelligence.

Building your tactical and strategic awareness, as well as developing your understanding of the evolving EM landscape, we work to deliver advantage designed for the real world.



**BUILDING  
TODAY'S  
CAPACITY  
TO COUNTER  
TOMORROW'S  
THREATS**

**OUR EVOLVING CLUSTER.**



Our fast-developing Electronic Warfare & Intelligence cluster delivers leading-edge solutions focused on the Radio Frequency systems and intelligence insights that enable a more secure future. Founded with two pioneering companies at our core, we are set to expand rapidly, supplementing our skills – and yours – with new digital competencies.

# O U R

# C L U S T E R

# E X P E R T S

## BEACON RED

Challenging complacency at all levels of the defence sector, Beacon Red empowers the region's national security and intelligence forces with the precision training, talent selection, expert capabilities and strategic tools to boost agility and robustness in the world's most demanding environments.



Innovative training platforms.



Precision language services.



Scalable staffing models.



Real-time curriculum development.



Proprietary precision testing and analytical assessment.



Subject matter experts from leading agencies and industries.

[beaconred.ae](http://beaconred.ae)

## SIGN4L

In the defence and security operations of tomorrow, SIGN4L will play a key role as a leader in Electromagnetic and Radio Frequency technologies, providing the systems and know-how to protect and defend assets and personnel against EM attack – managing transmissions, protecting perimeters, hardening systems and enabling secure communications to flow.



Advanced EM and RF technology development



Leading-edge secure communications solutions



Hardening operational systems and vehicles



Essential protection for tech and personnel



Securing and controlling wireless communications.

[signal.ae](http://signal.ae)



EDGE



The logo for EDGE, featuring the word "EDGE" in a bold, sans-serif font with a small orange horizontal bar above the letter "E".

EDGE

The background of the advertisement features three silhouettes against a white background. On the left, a man stands in profile, holding a prosthetic arm. In the center, a humanoid robot stands upright. On the right, a woman sits in a wheelchair, also in profile. A horizontal orange bar is positioned behind the text "SERVING HUMANITY FOR GOOD".

SERVING  
HUMANITY  
FOR GOOD —

JOIN US ON  
THE PATHWAY  
TO A MORE  
SECURE FUTURE

At EDGE, we are challenging the status quo. Reimagining our sector. Moving with speed and inventing with freedom. Driving new efficiencies. And enabling a secure future.

As we begin our new journey as a conglomerate grounded in defence and security, our goal is much wider and our horizon much broader – where a fusion of advanced technology, pioneering innovation and collaborative partnerships will serve humanity for good.



EDGE HQ  
Channel Street  
P.O.Box: 43221  
Abu Dhabi, UAE

**edgegroup.ae**

© EDGE Group PJSC 2020. All rights reserved.