



2807 S. 25th Avenue
Broadview, IL 60155
T: 800.621.0759
F: 708.338.9781
ecsparts.com
ecsstepcleaning.com



ASK US ABOUT OUR EXPANDING LINE OF ELEVATOR PARTS

Harmonic Door Operators and Components

[Standard Door Operators](#)
[Closed Loop Door Operators](#)
[Car Rollers](#)
[Chain](#)
[Circuit Boards](#)
[Clutches](#)
[Contacts](#)
[Door PC Boards](#)
[Door Drives](#)
[Door Drive Rollers](#)
[Gate Switches](#)
[Hatch Rollers](#)
[Interlock Kits](#)
[Levers](#)
[Motors](#)
[Spirators](#)
[Track and Hanger Packages Misc.](#)
[Accessories and Hardware](#)

Printed Circuit Boards

[Door Operator Boards](#)
[Emergency Light Boards](#)
KONE Compatible Boards
[Montgomery Compatible Boards](#)
Otis Compatible Boards
[Schindler Compatible Boards](#)

GAL Door Operators and Components

[MOVFR II Door Operators](#)
[Chain](#)
[Clutches](#)
[Contacts](#)
[Drives](#)
[Drive Arms](#)
[Hanger Rollers](#)
[Interlocks](#)
[Release Assemblies](#)
[Switch Assemblies](#)

Doors and Cab Components

[Stainless Steel Replacement Doors Primed Replacement Doors](#)
City of Chicago Certificate Frames
Door Gibs
Light Curtains

Safety Equipment

Back Supports
Gloves
Harnesses
Knee Pads
Respirator Masks
Safety Glasses
Complete Safety Kits

Electrical Equipment

Auxiliary Contacts
Car Station Power Supply Car
Top Power Supply
Coils
Contact Block Assembly
Contacts
Contact Kits
Cooling Fans
Fuses
LED and Incandescent Bulbs
Micro Switches
[Soft Starters](#)
Emergency Light Components

Other Assorted Components

Alarm Bells
Door Pickup Rollers
Fans
[Scavenger Pumps](#)
Hydraulic Oil
[Open Power Relays](#)
Roller Guide Wheels
[Timers and Voltage Monitors](#)
Upthrust Rollers
[Relays](#)

ESCALATOR INVENTORY IS EXPANDING TOO

KONE ECO 3000 - MONTGOMERY E5000 - VELINO - O & K

Parts sold by ECS Corporation are independently manufactured and/or sourced. No affiliation exists between ECS and KONE. ECS is an independently owned entity.



Fuses

ABC Style - Ceramic			Voltage			
ECS #	Littlefuse #	Bussmann #	Description	250 VAC	500 VAC	600 VAC
314001P	314001P	ABC1	0.25" X 1.25" FAST ACTING 1 AMP	X		
314002P	314002P	ABC2	0.25" X 1.25" FAST ACTING 2 AMP	X		
314003P	314003P	ABC3	0.25" X 1.25" FAST ACTING 3 AMP	X		
314004P	314004P	ABC4	0.25" X 1.25" FAST ACTING 4 AMP	X		
314005P	314005P	ABC5	0.25" X 1.25" FAST ACTING 5 AMP	X		
314006P	314006P	ABC6	0.25" X 1.25" FAST ACTING 6 AMP	X		
314007P	314007P	ABC7	0.25" X 1.25" FAST ACTING 7 AMP	X		
314010P	314010P	ABC10	0.25" X 1.25" FAST ACTING 10 AMP	X		
314015P	314015P	ABC15	0.25" X 1.25" FAST ACTING 15 AMP	X		

AGC Style - Glass			Voltage			
ECS #	Littlefuse #	Bussmann #	Description	250 VAC	500 VAC	600 VAC
312.500P	312.500P	AGC-1/2	0.25" X 1.25" FAST ACTING 1/2 AMP	X		
312.250P	312.250P	AGC-1/4	0.25" X 1.25" FAST ACTING 1/4 AMP	X		
312.125P	312.125P	AGC-1/8	0.25" X 1.25" FAST ACTING 1/8 AMP	X		
312010P	312010P	AGC10	0.25" X 1.25" FAST ACTING 10 AMP	X		
312001P	312001P	AGC1	AGC1 .25" X 1.25" FAST ACTING 1 AMP	X		
31201.5P	31201.5P	AGC1-1/2	0.25" X 1.25" FAST ACTING 1-1/2 AMP	X		
312002P	312002P	AGC2	0.25" X 1.25" FAST ACTING 2 AMP	X		
312003P	312003P	AGC3	0.25" X 1.25" FAST ACTING 3 AMP	X		
312004P	312004P	AGC4	0.25" X 1.25" FAST ACTING 4 AMP	X		
312005P	312005P	AGC5	0.25" X 1.25" FAST ACTING 5 AMP	X		
312006P	312006P	AGC6	0.25" X 1.25" FAST ACTING 6 AMP	X		
312008P	312008P	AGC8	0.25" X 1.25" FAST ACTING 8 AMP	X		
AGX5		AGX5	0.25" X 1" FAST ACTING 5 AMP	X		

FLQ Style - Fiber			Voltage			
ECS #	Littlefuse #	Bussmann #	Description	250 VAC	500 VAC	600 VAC
FLQ001	FLQ001	FNQ1	13/32" X 1-1/2" TIME DELAY 1 AMP		X	
FLQ002	FLQ002	FNQ2	13/32" X 1-1/2" TIME DELAY 2 AMP		X	
FLQ003	FLQ003	FNQ3	13/32" X 1-1/2" TIME DELAY 3 AMP		X	
FLQ005	FLQ005	FNQ5	13/32" X 1-1/2" TIME DELAY 5 AMP		X	
FLQ006	FLQ006	FNQ6	13/32" X 1-1/2" TIME DELAY 6 AMP		X	
FLQ007	FLQ007	FNQ7	13/32" X 1-1/2" TIME DELAY 7 AMP		X	



(800) 621 0759 | www.ecsparts.com

HEADQUARTERS 2807 S. 25th Avenue, Broadview, IL 60155

WESTERN REGION 4301 S. Valley View Boulevard, Suite 8, Las Vegas, NV 89103

Fuses

FNQR Style - Fiber				Voltage		
ECS #	Littlefuse #	Bussmann #	Description	250 VAC	500 VAC	600 VAC
KLDR010	KLDR010	FNQR10	13/32" X 1-1/2" CLASS CC TIME DELAY 10 AMP			X
KLDR012	KLDR012	FNQR12	13/32" X 1-1/2" CLASS CC TIME DELAY 12 AMP			X
KLDR002	KLDR002	FNQR2	13/32" X 1-1/2" CLASS CC TIME DELAY 2 AMP			X
KLDR003	KLDR003	FNQR3	13/32" X 1-1/2" CLASS CC TIME DELAY 3 AMP			X
KLDR03.5	KLDR03.5	FNQR3-1/2	13/32" X 1-1/2" CLASS CC TIME DELAY 3-1/2 AMP			X
KLDR004	KLDR004	FNQR4	13/32" X 1-1/2" CLASS CC TIME DELAY 4 AMP			X
KLDR005	KLDR005	FNQR5	13/32" X 1-1/2" CLASS CC TIME DELAY 5 AMP			X
KLDR006	KLDR006	FNQR6	13/32" X 1-1/2" CLASS CC TIME DELAY 6 AMP			X
KLDR008	KLDR008	FNQR8	13/32" X 1-1/2" CLASS CC TIME DELAY 8 AMP			X

FRNR Style - Fiber				Voltage		
ECS #	Littlefuse #	Bussmann #	Description	250 VAC	500 VAC	600 VAC
FLNR010	FLNR010	FRNR10	CLASS RK5 TIME DELAY 10 AMP	X		
FLNR01.6	FLNR01.6	FRNR16/10	CLASS RK5 TIME DELAY 1-6/10 AMP	X		
FLNR002	FLNR002	FRNR2	CLASS RK5 TIME DELAY 2 AMP	X		
FLNR025	FLNR025	FRNR25	CLASS RK5 TIME DELAY 25 AMP	X		
FLNR003	FLNR003	FRNR3	CLASS RK5 TIME DELAY 3 AMP	X		
FLNR030	FLNR030	FRNR30	CLASS RK5 TIME DELAY 30 AMP	X		
FLNR004	FLNR004	FRNR4	CLASS RK5 TIME DELAY 4 AMP	X		
FLNR005	FLNR005	FRNR5	CLASS RK5 TIME DELAY 5 AMP	X		
FLNR006	FLNR006	FRNR6	CLASS RK5 TIME DELAY 6 AMP	X		
FLNR6.25	FLNR6.25	FLNR6.25	CLASS RK5 TIME DELAY 6-1/4 AMP	X		

FWP Style - Fiber				Voltage		
ECS #	Littlefuse #	Bussmann #	Description	250 VAC	500 VAC	700 VAC
FWP150A		FWP150A	SEMICONDUCTOR FAST ACTING 150 AMP			X
FWP250A		FWP250A	SEMICONDUCTOR FAST ACTING 250 AMP			X
FWP100A		FWP100A	SEMICONDUCTOR FAST ACTING 100 AMP			X
FWP200A		FWP200A	SEMICONDUCTOR FAST ACTING 200 AMP			X
FWP300A		FWP300A	SEMICONDUCTOR FAST ACTING 300 AMP			X
FWP350A		FWP350A	SEMICONDUCTOR FAST ACTING 350 AMP			X
FWP400A		FWP400A	SEMICONDUCTOR FAST ACTING 400 AMP			X



Fuses

FWH Style - Fiber				Voltage		
ECS #	Littlefuse #	Bussmann #	Description	250 VAC	500 VAC	600 VAC
FWH200B	FWH200B	FWH200B	SEMICONDUCTOR FAST ACTING 200 AMP		X	
FWH250A	FWH250A	FWH250A	SEMICONDUCTOR FAST ACTING 250 AMP		X	
FWH350A	FWH350A	FWH350A	SEMICONDUCTOR FAST ACTING 350 AMP		X	
FWH150B	FWH150B	FWH150B	SEMICONDUCTOR FAST ACTING 150 AMP		X	
FWH175B	FWH175B	FWH175B	SEMICONDUCTOR FAST ACTING 175 AMP		X	
FWH300A	FWH300A	FWH300A	SEMICONDUCTOR FAST ACTING 300 AMP		X	
FWH400A	FWH400A	FWH400A	SEMICONDUCTOR FAST ACTING 400 AMP		X	
FWH500A	FWH500A	FWH500A	SEMICONDUCTOR FAST ACTING 500 AMP		X	
FWH60B	FWH60B	FWH60B	SEMICONDUCTOR FAST ACTING 60 AMP		X	
FWH70A	FWH70A	FWH70A	SEMICONDUCTOR FAST ACTING 70 AMP		X	
FWH80B	FWH80B	FWH80B	SEMICONDUCTOR FAST ACTING 80 AMP		X	

MDA Style - Ceramic				Voltage		
ECS #	Littlefuse #	Bussmann #	Description	250 VAC	500 VAC	600 VAC
326010P	326010P	MDA10	0.25" X 1.25" TIME DELAY 10 AMP	X		
326015P	326015P	MDA15	0.25" X 1.25" TIME DELAY 15 AMP	X		
326003P	326003P	MDA3	0.25" X 1.25" TIME DELAY 3 AMP	X		

MDL Style - Glass				Voltage		
ECS #	Littlefuse #	Bussmann #	Description	250 VAC	500 VAC	600 VAC
313.500P	313.500P	MDL-1/2	0.25" X 1.25" TIME DELAY 1/2 AMP	X		
313.250P	313.250P	MDL-1/4	0.25" X 1.25" TIME DELAY 1/4 AMP	X		
31301.5P	31301.5P	MDL-1-1/2	0.25" X 1.25" TIME DELAY 1-1/2 AMP	X		
313002P	313002P	MDL2	0.25" X 1.25" TIME DELAY 2 AMP	X		
31302.5P	31302.5P	MDL-2-1/2	0.25" X 1.25" TIME DELAY 2-1/2 AMP	X		
313003P	313003P	MDL3	0.25" X 1.25" TIME DELAY 3 AMP	X		
313004P	313004P	MDL4	0.25" X 1.25" TIME DELAY 4 AMP	X		
3136.25P	3136.25P	MDL6-1/4	0.25" X 1.25" TIME DELAY 6-1/4 AMP	X		
313007P	313007P	MDL7	0.25" X 1.25" TIME DELAY 7 AMP	X		
313008P	313008P	MDL8	0.25" X 1.25" TIME DELAY 8 AMP	X		

PCB Mount - 2 Pin Plugin				Voltage		
ECS #	Littlefuse #	Bussmann #	Description	250 VAC	500 VAC	600 VAC
273001	273001		MICROFUSE ROUND SHAPED 1 AMP - 125V			
273004	273004		MICROFUSE ROUND SHAPED 4 AMP - 125V			



Fuses

NON Style - General Purpose				Voltage		
ECS #	Littlefuse #	Bussmann #	Description	250 VAC	500 VAC	600 VAC
NLN001	NLN001	NON1	CLASS H 1 AMP	X		
NLN010	NLN010	NON10	CLASS H 10 AMP	X		
NLN015	NLN015	NON15	CLASS H 15 AMP	X		
NLN002	NLN002	NON25	CLASS H 25 AMP	X		
NLN003	NLN003	NON3	CLASS H 3 AMP	X		
NLN004	NLN004	NON4	CLASS H 4 AMP	X		
NLN005	NLN005	NON5	CLASS H 5 AMP	X		
NLN006	NLN006	NON6	CLASS H 6 AMP	X		
NLN008	NLN008	NON8	CLASS H 8 AMP	X		

PCB Mount - Axial				Voltage		
ECS #	Littlefuse #	Bussmann #	Description	250 VAC	500 VAC	600 VAC
251002L	251002L		PICO FUSE 2 AMP - 125V			
251.500L	251.500L		PICO FUSE 1/2 AMP - 125V			
251004L	251004L		PICO FUSE 4 AMP - 125V			
251001L	251001L		PICO FUSE 1 AMP - 125V			
251005L	251005L		PICO FUSE 5 AMP - 125V			
251.250L	251.250L		PICO FUSE 1/4 AMP - 125V			

Misc Fuses - Various Styles				Voltage		
ECS #	Littlefuse #	Bussmann #	Description	250 VAC	500 VAC	600 VAC
MDQ3		MDQ3	0.25" X 1.25" GLASS TIME DELAY 3 AMP	X		
239.500P	239.500P		5MM X 20MM GLASS TIME DELAY 1/4 AMP	X		
NLS006	NLS006	NOS6	CLASS H GENERAL PURPOSE 6 AMP			X
FWX15A14		FWX15A14F	SEMICONDUCTOR FAST ACTING 15 AMP	X		
218002P	218002P	GDC2A	5 MM X 20 MM GLASS TIME DELAY 2 AMP	X		
KLK030	KLK030	KTK30	13/32" X 1-1/2" FAST ACTING 30 AMP			X

GLASS FUSE KIT		
ECS #	Bussmann #	Description
N0900T1S	N0900T1S	INCLUDES AGC 1/8, 1/2, 1, 1-1/2, 2, 3, 5, 6 , 10 AMP & MDL 5 AMP FUSES



Relays and Miscellaneous

Schneider - With Status LED	
ECS #	Description
RUMF33BD	3PDT 24VDC UNIVERSAL PLUG IN RELAY
RUMF33FD	3PDT 110VDC UNIVERSAL PLUG IN RELAY
RUMF33F7	3PDT 120VAC UNIVERSAL PLUG IN RELAY

IDEC - With Status Light	
ECS #	Description
RR3B-UL-DC24V	3PDT 24VDC UNIVERSAL PLUG IN RELAY
RR3B-UL-DC110V	3PDT 110VDC UNIVERSAL PLUG IN RELAY
RR3B-UL-AC120V	3PDT 120VAC UNIVERSAL PLUG IN RELAY

Schneider - With Light	
ECS #	Description
RXM4AB3BD	4PDT 24VDC UNIVERSAL PLUG IN RELAY
RXM4AB3FD	4PDT 110VDC UNIVERSAL PLUG IN RELAY
RXM4AB3F7	4PDT 120VAC UNIVERSAL PLUG IN RELAY

IDEC - With Light	
ECS #	Description
RY4S-UL-DC24V	4PDT 24VDC UNIVERSAL PLUG IN RELAY
RY4S-UL-DC100/DC110V	4PDT 110VDC UNIVERSAL PLUG IN RELAY
RY4S-UL-AC110/120V	4PDT 120VAC UNIVERSAL PLUG IN RELAY

Miscellaneous	
ECS #	Description
PYF14AE	4PDT UNIVERSAL RELAY SOCKET
70-463-1	3PDT UNIVERSAL RELAY SOCKET
177DA1	SS-5-FT - MICROSWITCH FOR OTIS PUSHBUTTON, LVR (OMRON) 5A 125/250V



Timers and Voltage Monitors

ECS #	Bussmann #	Description
70-464-1	70-464-1	UNIVERSAL 8 PIN OCTAL BASE/SOCKET FOR PHASE MONITORS AND TIMERS
70-465-1	70-465-1	UNIVERSAL 11 PIN OCTAL BASE/SOCKET FOR PHASE MONITORS AND TIMERS
TDR-SOXB-120	TDR-SOXB-120	PLUG IN TIMER, 120VAC/DC, ON DELAY, 0.1SEC-10 HRS, 11 BLADE (DPDT 12A)
TRU1	TRU1	UNIVERSAL PLUG IN TIMER, ON DELAY, 19-264AC, 19-30VDC, 8 PIN OCTAL, 0.1S-1000M (10A)
TRU3	TRU3	UNIVERSAL PLUG IN TIMER, ON/OFF DELAY, 19-264AC, 19-30VDC, 11 PIN OCTAL, 0.1S-1000M (10A)
438USA	438USA	UNIVERSAL TIMER, ARTISAN 438USA, 19-288VAC/VDC (A760) ON DELAY, 1S-1024SEC, (1A WITH DIP SWITCHES)
258B	258B	UNIVERSAL PLUG IN PHASE/VOLTAGE MONITOR 160-240VAC SPDT 8 PIN OCTAL
A258B	A258B	UNIVERSAL PLUG IN PHASE/VOLTAGE MONITOR 380-480VAC SPDT 8 PIN OCTAL



GAL Door Components

ECS #	Description
INT1H-0022R	RELEASE ROLLER ASSY,MOH B LINK RH
INT1H-0022L	RELEASE ROLLER ASSY,MOH B LINK LH
OP22-0531N	ARM,75"LG UNIVERSAL ALUMINUM DRIVE With Beveled Cut Hole 3/4"Cl From Top75"Lg/Undrilled & Uncut For High Cabs
RES-0110N	RESISTOR, 750 OHM 200W W/BANDS
OP22-0178N	LINK,OPERATOR 17.25" L, CONNECTING, UPPER (TAPPED)
OP22-0179N	LINK,TYPE "I" SLOTTED CONNECTING, LOWER 16.5" L
OP22-0180N	LINK,TYPE "II" SLOTTED CONNECTING, LOWER, 24.75" L
OP99-0005L	Operator,SS-2S 40"-44" door opening MOVFR II
SW1-0044N	Switch ASSY,"G" gate
MOVFR-0072N	DRIVE, MOVFR II Operator Frequency 230VA Includes Drive Ribbon Cable(MOVFR-0073N)
CLU9-0115L	Locking ASSY,LWZ-2 clutch zone 36" ROD
CLU9-0115R	Locking ASSY,LWZ-2 clutch zone, 36" ROD
OP21-0025N	Stop roller ASSY, operator pulley, use for jobs after 4-30-2006(FLUSH SCREW HEAD) replaces part #OP10-0072N
OP10-0036N	Chain,MOD #35 roller drive pulley used for jobs before 5-1-2006(AFTER 4-30-2006 USE OP21-0006N)
OP21-0005N	Chain, MOVFR/MOM/MOH/MOCT/MOXL #40 drive pulley (also used on MOD SERIES USED AFTER 4-30-2006) with clamps
OP22-0740N	Side slide operator crank arm
OP22-0741N	Side slide operator crank arm
OP22-0062N	Bolt/bearing kit, drive arm
CLU9-0002L	Clutch,LWZ-2 6" link W/24" rod SS 30-34 DO/2SP 27-34 DO/CP 34-49 DO/2SCP 50-59 DO/3SP 35-39 DO
CLU9-0002R	Clutch,LWZ-2 6" link W/24" rod SS 30-34 DO/2SP 27-34 DO/3SP 35-39 DO
CLU3-0400L	Locking ASSY,LWZ-1 Clutch 5 1/8"
INT1H-0023N	Roller & shaft, MO Interlock, 2 3/8" O.A. Zinc Plated Shaft
INT1H-0017N	Contact, MO Keeper Bridging
INT1H-0024L	Contact Base, MO Interlock
INT1H-0024R	Contact base, MO Interlock
INT2H-0015N	Keeper Fixed, MOCP Interlock
INT1H-0002L	Interlock,MOH B link S/S-2/SP 30"-39" D.O.CP-2S/CP 40"-49" D.O.
INT1H-0036L	Contact kit, MO/MOCP-KT
INT1H-0036R	Contact Kit, MO
INT5-0018N	Bridging Contact,M/N/WP/WX/NHA Upper
INT5-0019N	Bridging Contact, M/N SM/SN Keeper
INT4-0001N	Keeper,M/N Interlock Swing Door Surface Mounted Lock. Also used on SN & SN-C Lock & Contact
SW1-0001N	Switch ASSY, Gate
SW1-0003N	Contact Kit, G-KT Gate Switch



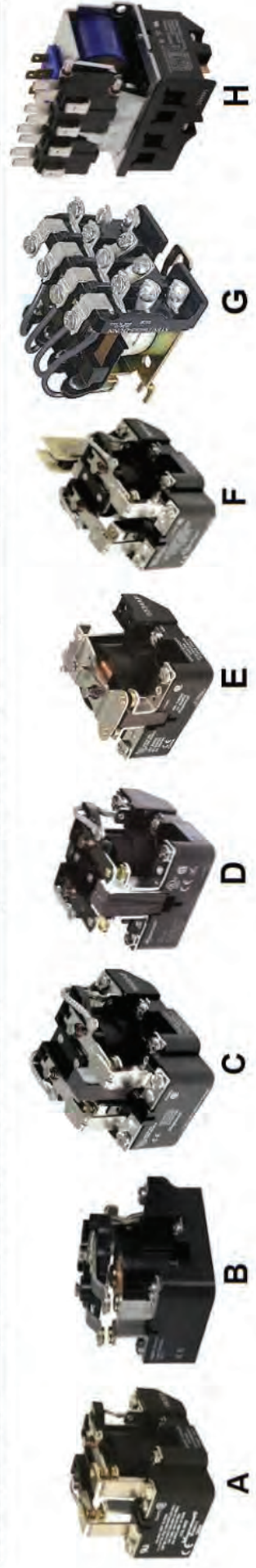


Open Power Relays

800.621.0759

Find the Quality Parts
You Need to Keep
Things Running Smoothly!

ECS Part #	Description	Form	P&B Equal	Dover #	Montgomery #	Westinghouse #	Robicon #
199ABX-14	DPDT, MAG BLOW-OUT, 120VAC COIL	C	PRD11AH0120	9755240			
199AX-14	DPDT, 120VAC COIL	A	PRD11AY0120	9713207	19238, 55045, 511541	H3088H017	
199AX-13	DPDT, 24VAC COIL	A	PRD11AY024		28383, 502868-024		
199AX-15	DPDT, 240VAC COIL	A	PRD11AY0240	9713219	22419, 502868-240	H3088H014	
199BX-14	DPDT, MAG BLOW-OUT, 110VDC COIL	C	PRD11DH0110				
199BX-12	DPDT, MAG BLOW-OUT, 12VDC COIL	C	PRD11DH012	9742918	504646-12		
199BX-13	DPDT, MAG BLOW-OUT, 24VDC COIL	C	PRD11DH024	9742920			
199BX-18	DPDT, MAG BLOW-OUT, 48VDC COIL	C	PRD11DH048				
199X-14	DPDT, 110VDC COIL	A	PRD11DY0110	9713360		H3088H06	
199X-13	DPDT, 24VDC COIL	A	PRD11DY024	9768269	502823-024		
199X-18	DPDT, 48VDC COIL	A	PRD11DY048	9768993	502823-048		
199DBX-3	SPST-NO-DM, MAG BLOW-OUT, 24VDC COIL	E	PRD3DH024				LA5P205-0026
199ABX-9	DPST, MAG BLOW-OUT, 120VAC COIL	D	PRD7AH0120	9741008			
199AX-9	DPST, 120VAC COIL	B	PRD7AY0120	9712156		H3088H013	
199AX-10	DPST, 240VAC COIL	B	PRD7AY0240	9712168		H3088H016	
199BX-9	DPST, MAG BLOW-OUT, 110VDC COIL	D	PRD7DH0110	9741185			
199BX-7	DPST, MAG BLOW-OUT, 12VDC COIL	D	PRD7DH012	9776345			
199BX-8	DPST, MAG BLOW-OUT, 24VDC COIL	D	PRD7DH024	9847054			
199BX-17	DPST, MAG BLOW-OUT, 48VDC COIL	D	PRD7DH048	9769018	504640-048		
199X-8	DPST, 24VDC COIL	B	PRD7DY024	9768257	504742-024		
199X-17	DPST, 48VDC COIL	B	PRD7DY048	9772698	504742-048		
199AMX-14	DPDT, 120VAC COIL, W/SPDT AUX CONTACT	F	PRDA11AY0120	9755240			
PM17AY120	4PDT, 120VAC COIL	G	PM17AY120		500943-120		
PM17AY240	4PDT, 240V COIL	G	PM17AY240	9713050	500943-240		
PM17DY110	4PDT, 110VDC COIL	G	PM17DY110		504747-110		
A275KXX91-120VAC	REVERSING CONTACTOR, 120VAC COILS	H	A275KXX91-120VAC		KM960863		





PCEC Hydraulic Elevator Softstarter

PCEC Controller Panel - 120V Control Voltage

DELTA Connected - 6 Wire			Line Connected - 3 Wire			With 120VAC 50/60 Hz Control Voltage
Maximum Horsepower		Overload Range	Maximum Horsepower		Overload Range	Catalog Number
200V	480V	575V	200V	480V	575V	
10	20	30	10.9...32.9	5	15	PCEC-032-600V-120V
15	30	40	17...51	7.5	25	PCEC-051-600V-120V
20	40	60	21.3...64	10	30	PCEC-064-600V-120V
20	25	50	24.7...74	10	40	PCEC-074-600V-120V
30	40	75	34.7...104	15	50	PCEC-104-600V-120V
40	50	100	49...147	25	75	PCEC-147-600V-120V
75	75	150	59...234	40	125	PCEC-234-600V-120V

PCEC Controller Panel - 230V Control Voltage

DELTA Connected - 6 Wire			Line Connected - 3 Wire			With 230VAC 50/60 Hz Control Voltage
Maximum Horsepower		Overload Range	Maximum Horsepower		Overload Range	Catalog Number
200V	480V	575V	200V	480V	575V	
10	20	30	10.9...32.9	5	15	PCEC-032-600V-230V
15	30	40	17...51	7.5	25	PCEC-051-600V-230V
20	40	60	21.3...64	10	30	PCEC-064-600V-230V
20	25	50	24.7...74	10	40	PCEC-074-600V-230V
30	40	75	34.7...104	15	50	PCEC-104-600V-230V
40	50	100	49...147	25	75	PCEC-147-600V-230V
75	75	150	59...234	40	125w	PCEC-234-600V-230V

Replacement Parts

Complete Assembly (For Reference Only)	PCE Controller Only	PCE Fans	Fault Contactor	Fault Contactor Coil
PCEC-032-600V-120V	PCE-032-600V		CA7-37-00-120	
PCEC-051-600V-120V	PCE-051-600V	PCV-064 (optional)	CA7-37-00-120	TC473
PCEC-064-600V-120V	PCE-064-600V		CA7-37-00-120	
PCEC-074-600V-120V	PCE-074-600V		CA7-43-00-120	TD473
PCEC-104-600V-120V	PCE-104-600V	PCV-147	CA7-60-00-120	TE473
PCEC-147-600V-120V	PCE-147-600V		CA7-85-00-120	TE473
PCEC-234-600V-120V	PCE-234-600V	PCV-234	CAG-180-EI-11-120	CAG-TGE865

PCEC-032-600V-230V	PCE-032-600V		CA7-37-00-240	
PCEC-051-600V-230V	PCE-051-600V	PCV-064 (optional)	CA7-37-00-240	TC858
PCEC-064-600V-230V	PCE-064-600V		CA7-37-00-240	
PCEC-074-600V-230V	PCE-074-600V		CA7-43-00-240	TD858
PCEC-104-600V-230V	PCE-104-600V	PCV-147	CA7-60-00-240	TE858
PCEC-147-600V-230V	PCE-147-600V		CA7-85-00-240	TE858
PCEC-234-600V-230V	PCE-234-600V	PCV-234	CAG-180-EI-11-220W	CAG-TGE866



(800) 621 0759 | www.ecsparts.com

HEADQUARTERS 2807 S. 25th Avenue, Broadview, IL 60155

WESTERN REGION 4301 S. Valley View Boulevard, Suite 8, Las Vegas, NV 89103

Increases motor life & reduces downtime

Eliminates routine maintenance

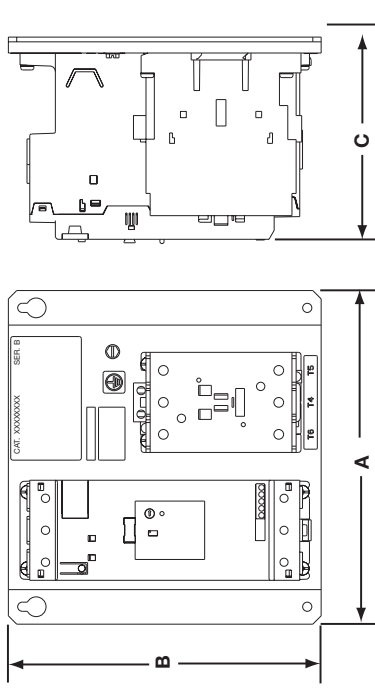
Replaces traditional Wye-Delta installations

Easy installation and setup



The PCEC is much smaller than other commonly used softstarters. Its compact size makes it the perfect replacement for mechanical Wye-Delta contactors

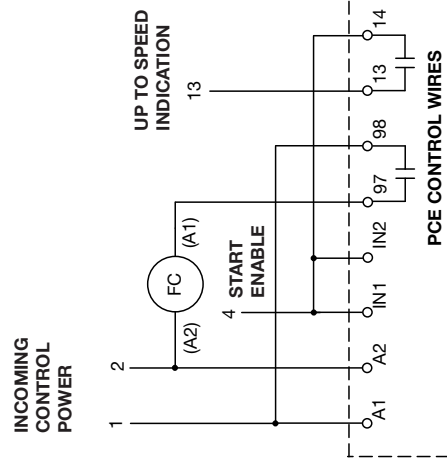
Starting/Stopping Modes	Fault Diagnostics
• Current Limit	• Overload Condition
• Soft Start	• Over Temperature - SCR
• Soft Stop	• Phase Reversal
• Coast-to-Rest	• Phase Loss/Open Load
• 0.75 second Delayed Stop	• Phase Imbalance
• Delta or Line Compatible	• Shorted SCR



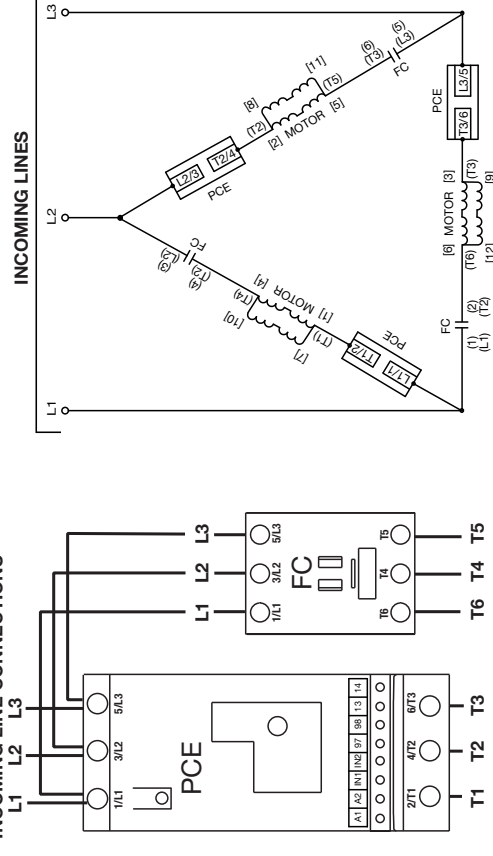
Controller Size	Units	A (Width)	B (Height)	C (Depth)	Approx. Weight
32/51/64	mm	178	144	115.7	4 lbs
	in	7.01	5.67	4.56	(2 kg)
74/104/147	mm	240	225	147.9	14 lbs
	in	9.45	8.86	5.82	(6 kg)
234	mm	362	515	216.4	51 lbs
	in	14.25	20.28	8.52	(23 kg)

For detailed technical information concerning this product, please consult your Sprecher + Schuh representative for accompanying publications.

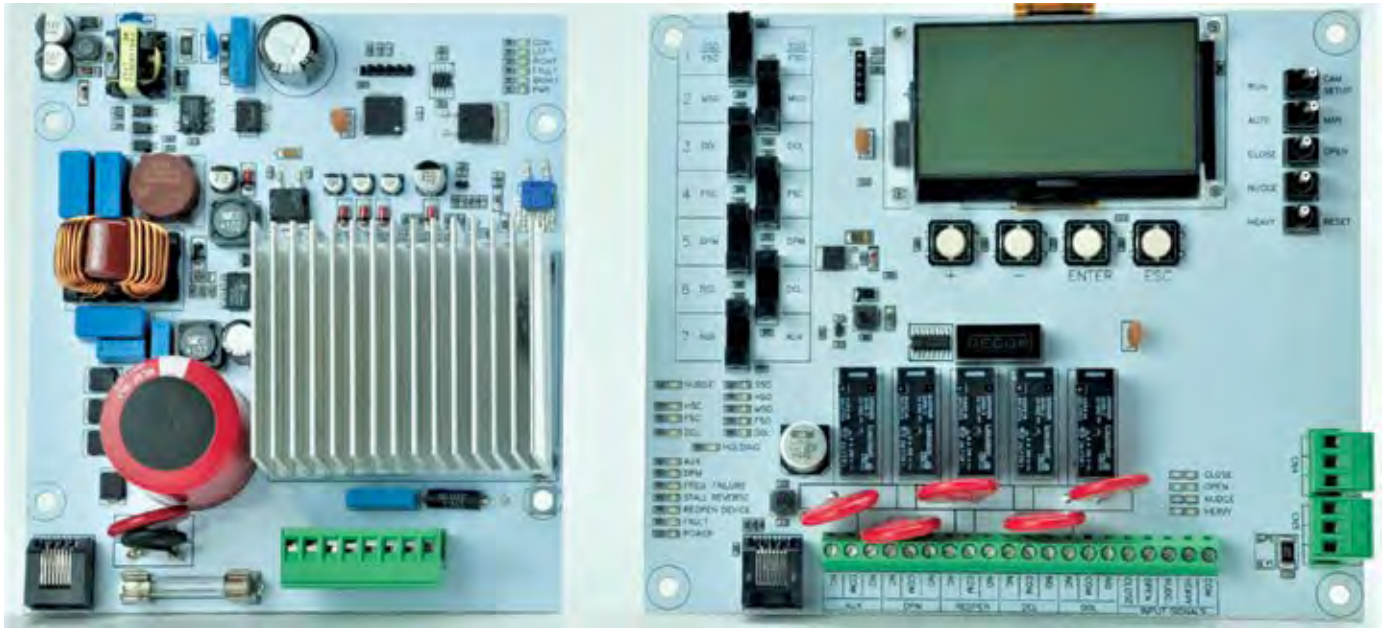
PCEC Control & Power Circuit



Delta Connected Line Diagram



MOVFR LCD Board



The MOVFR LCD board offers the latest in door control technology, including advancements in power management, to provide a longer service life. The new design incorporates LCD programming, adjustments and on-board diagnostics through the main control board. It features an industry specific variable frequency drive to greatly reduce field set-up labor.

Advantages:

- Provides identical footprint application for fit, form and function for MOVFR 1 & 2 models.
- On-board LCD display parameter adjustment in real time (no hand-held tool required).
 - User friendly LCD rotation – work from either side of the operator.
 - On-board LED indicators.
- Job specific variable frequency drive board. Advanced design reduces heat for superior drive efficiency.
 - Universal input voltage - no plug-in modules required, reducing maintenance cost.
 - Door detector enabled through LCD display- no chip purchase required.
- Control board contains no antiquated removable modules or relays, utilizing current state of the art components.
 - Reduces field set-up and service labor.

Contact your sales rep or call (800) 621 0759 to learn more!

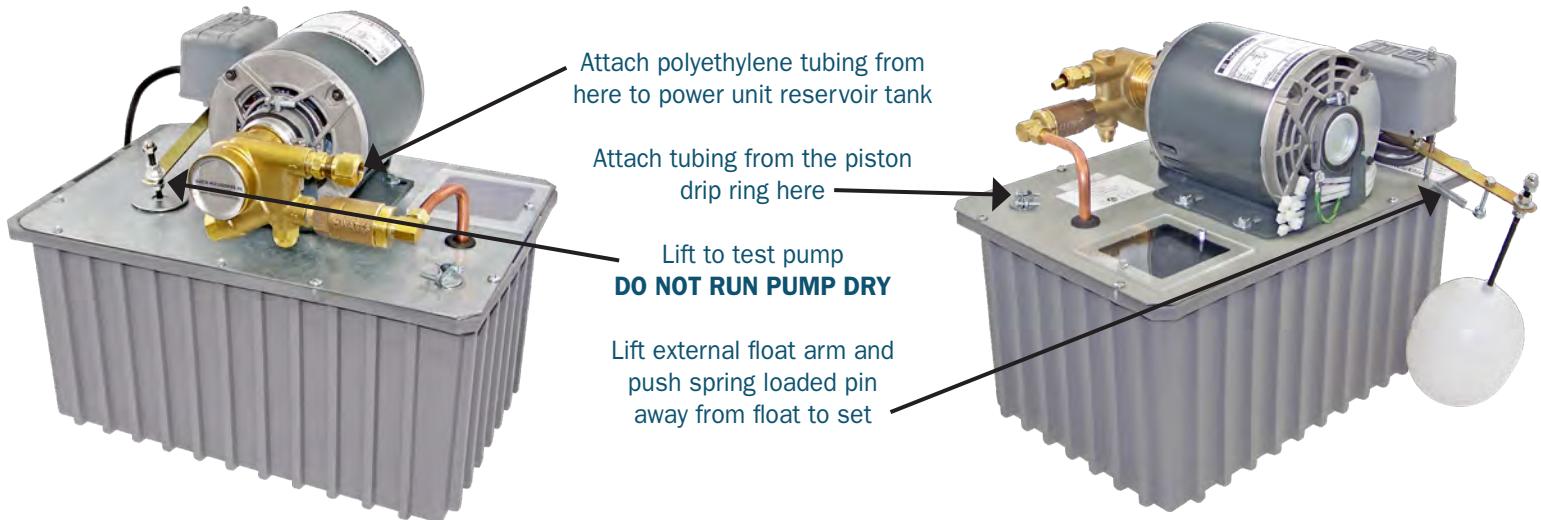


(800) 621 0759 | www.ecsparts.com

HEADQUARTERS 2807 S. 25th Avenue, Broadview, IL 60155

WESTERN REGION 4301 S. Valley View Boulevard, Suite 8, Las Vegas, NV 89103

Scavenger Pump SP-1



Installation Instructions

1. Secure the scavenger pump to the pit floor or pit channels, if required, to prevent the unit from tipping if the pit water depth becomes too high. The scavenger pump must be LEVEL and PLUMB in the pit to ensure unrestricted operation of all floats. Due to the variances in mounting for each job, mounting brackets and hardware are not provided.
2. Make a 7/8" hole at the top of the power unit reservoir tank and install the 1/2" clamp provided.
3. Attach the polyethylene tubing provided from the brass outlet of the pump (see picture) to the power unit reservoir tank, making sure it is above the high oil level of the power unit reservoir tank, and secure in pit with the plastic ties.
4. Attach tubing from the piston drip ring to the 1/2" clamp located on the top of the scavenger pump reservoir (see picture).
5. Fill the scavenger pump reservoir half way with oil.
6. Set the flood control by lifting the external float arm and pushing the spring-loaded pin away from the float. The external float should drop into the down position. No additional adjustments should be required.
7. Plug the scavenger pump into a 115V outlet.
8. TESTING: Lift the internal float rod until the pump activates (a clicking sound will be heard). The scavenger pump is now operational.
9. OPTIONAL ABSOLUTE TEST: Remove one screw from the inspection window and spin the window to the side. Slowly add oil to the reservoir. When oil level is approximately 3" from the steel cover, the pump should start. Use this test to observe proper starting and stopping. When finished testing, return inspection window to the original position and screw back into place. Reset flood control per Step 6 above.

DO NOT RUN THE PUMP DRY



(800) 621 0759 | www.ecsparts.com

HEADQUARTERS 2807 S. 25th Avenue, Broadview, IL 60155

WESTERN REGION 4301 S. Valley View Boulevard, Suite 8, Las Vegas, NV 89103

Maintenance

- Periodic maintenance will prolong the life of your SP-1 Scavenger Pump. It is recommended that the pump be checked periodically for any obstructions.
- In case of flooding, check to make sure the external float is in the down position or the pump will not operate and the scavenger pump oil reservoir may overflow.
- **WARNING:** If the pit floods, turn off power prior to entering the area to eliminate the risk of shock.
- Lift the internal float rod to test run the system. Make sure there is oil in the reservoir. **DO NOT RUN THE PUMP DRY**
- When needed, remove the strainer from the brass pump by loosening the large acorn nut. Clean the strainer and replace.

Specifications

- 1/3 HP 115V single phase motor
- Rotary vane pump with 71 mesh, 200 micron filter
- One way full flow check valve for long runs
- 100 feet 1/2" O.D. polyethylene tubing
- External flood control with manual reset
- Steel cover with clear 1/4" thick acrylic inspection window
- Polyethylene reservoir is corrosion proof and ribbed for added strength
- Dimensions are 16 1/2"L x 10 7/8"W x 8"D, holds 4 gallons of oil
- 8 foot power cord
- Tie wraps for in pit use
- Pumps 100 feet of head
- Pumps 200 feet of horizontal run

Parts List

- 100 feet 1/2" O.D., 3/8" I.D. polyethylene tubing
- 10 plastic ties
- 1/2" clamp
- Extra spring for external float arm



(800) 621 0759 | www.ecsparts.com

HEADQUARTERS 2807 S. 25th Avenue, Broadview, IL 60155

WESTERN REGION 4301 S. Valley View Boulevard, Suite 8, Las Vegas, NV 89103

Harmonic Operator and Track Options

ECS distributes a time tested line of robust operator equipment with track and hanger options.

The Harmonic Operator and track equipment is extremely well constructed using a design that has been tested with over 40 years of installations. In addition, The Harmonic Operator track is available for both the car side and entrance side.

Modernizations are simplified as this equipment is compatible with thousands of MAC® installations across North America. Available in a wide range of sizes, Our Harmonic Operator equipment is also well suited for new installations.

All of the ECS Operator and track equipment, including our closed loop operator, is manufactured in the United States by associates with years of experience.



2807 S. 25th Avenue | Broadview, IL 60155-4639
P: **800.621.0759** | **708.338.9700** | F: **708.338.9781**

www.ecsparts.com

Harmonic Operator Options

P: [800.621.0759](tel:800.621.0759) | [708.338.9700](tel:708.338.9700) | F: [708.338.9781](tel:708.338.9781)
www.ecsparts.com

Standard Operator Packages

Standard Range Operator
 Split Link
 Long Lever Standard
 Crank Arm Adjustable
 DOOR DRIVE BLOCK

High Performance Operator Packages

High Performance Operator
 Split Link
 Long Lever Standard
 Crank Arm Adjustable
 DOOR DRIVE BLOCK

Closed Loop Operator Packages

Closed Loop Operator
 Split Link
 Long Lever Standard
 Crank Arm Adjustable
 DOOR DRIVE BLOCK

Auxiliary Shaft Operator Packages

High Perf. Aux. Shaft Operator
 Split Link
 Long Lever Standard
 Crank Arm Adjustable
 DOOR DRIVE BLOCK

Feature	S.Slide	Ctr.Opng.	2Spd.	2Spd/CO	Speed	Max Door Wt.
Standard Range	X	X	X		2.0-2.5 ft/sec	470#
High Performance / Closed Loop	X	X	X	X	2.5-3.0 ft/sec	500#
High Performance Auxiliary Shaft	X	X	X	X	2.0-2.5 ft/sec	525#

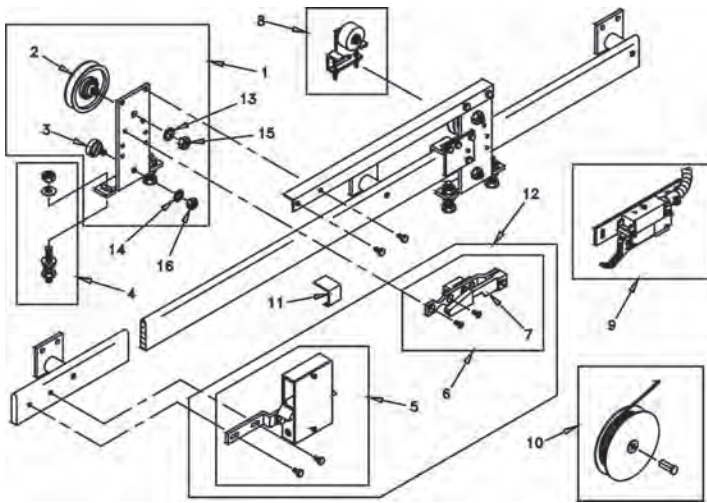
Feature	Standard Range	High Performance	High Performance Auxiliary
Permanent magnet D.C. motor	X	X	X
Integral solid state control	X	X	X
Ball bearing construction	X	X	X
Quiet V-belt drive	X	X	X
Full top cover (provides protection from potentially damaging elements)	X	X	X
Full bottom cover (isolates power supply)	X	X	X
Welded frame	X	X	X
Dual output power supply		X	X
Dual drive belts (reduces belt slippage due to increased torque)		X	X
Auxiliary reduction shaft (increases Mechanical advantage)			X



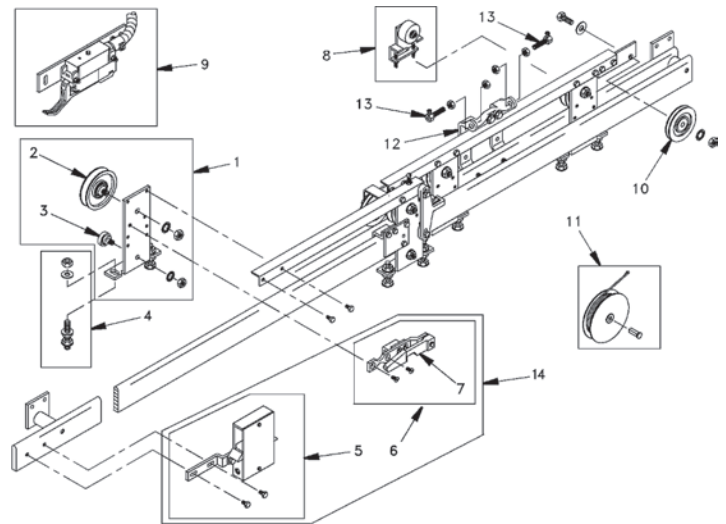
2807 S. 25th Avenue | Broadview, IL 60155-4639
 P: [800.621.0759](tel:800.621.0759) | [708.338.9700](tel:708.338.9700) | F: [708.338.9781](tel:708.338.9781)
www.ecsparts.com

Harmonic Track Options

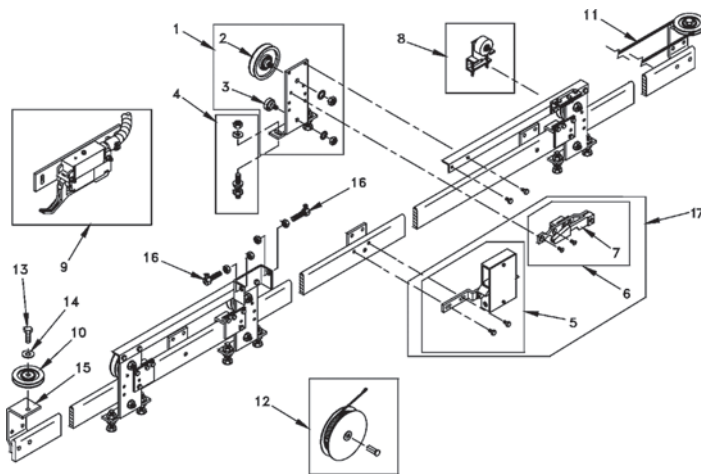
P: 800.621.0759 | 708.338.9700 | F: 708.338.9781
www.ecsparts.com



ES-1 SINGLE SPEED, SIDE-OPENING



ES-1 TWO SPEED, SIDE-OPENING



ES-1 CENTER OPENING

ES-1 Features

ES-1 Hangers are a dimensionally versatile hanger product line. (Also known as the "traditional hanger".)

Due to their versatility they are used on new construction, as well as modernization and service repair where building constraints require a custom designed hanger specifically for that application.

These building limitations can be narrow hoist ways, unusual opening widths door applications, or low pocket heights.

We have a design staff ready to work with general contractors, architects and elevator contractors to meet their needs of their specific application.

There are two configurations for the ES-1 Hanger $\frac{1}{2} \times 1\frac{1}{2}$ in.: Standard Duty track (hatch only), and $\frac{1}{2} \times 2\frac{1}{2}$ in. Heavy Duty track (car and hatch).

Double hanger pendants are attached by a pendant angle. It has non-eccentric polyurethane rollers that ride on the door track. It also has two configurations $2\frac{1}{2}$ in. running diameter for $1\frac{1}{2}$ in. track, and $3\frac{1}{4}$ in. running diameter for $2\frac{1}{2}$ in. track.

Eccentric upthrust rollers are positioned under the track to prevent the doors from being accidentally forced off the door track. It is also used for adjustment. The hangers are secured to the door with adjustable pendant bolts. The cable sheaves secure the $\frac{1}{8}$ in. flexible cabling. The track mounting brackets are used to mount the hanger to the header. The pendant angle is to support the pendants.

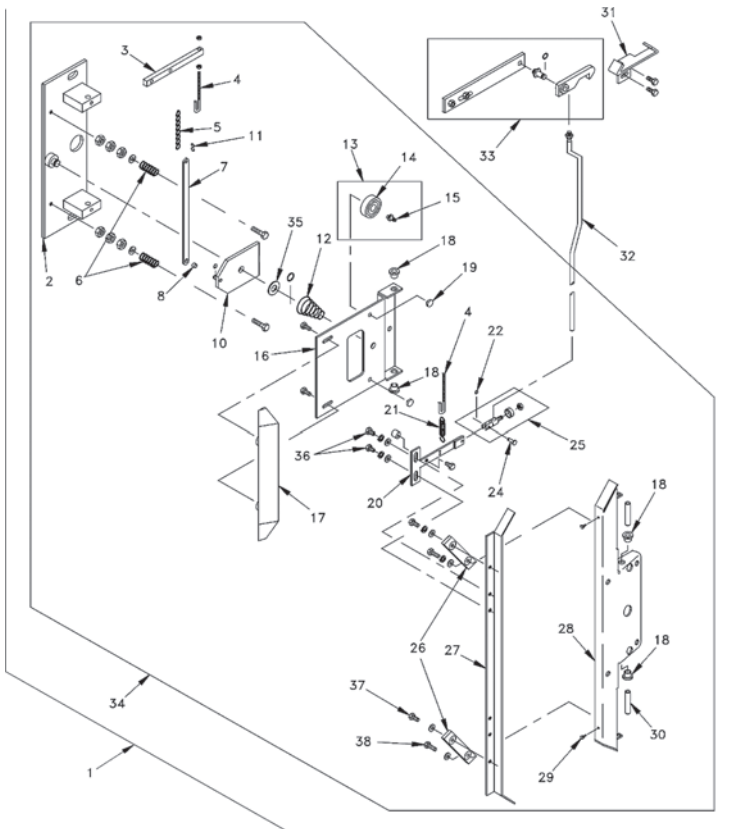
Hatch Hanger Packages

- Hatch Hanger
- Interlock
- Reel Closer
- Unlocking Arm
- Hatch Hardware

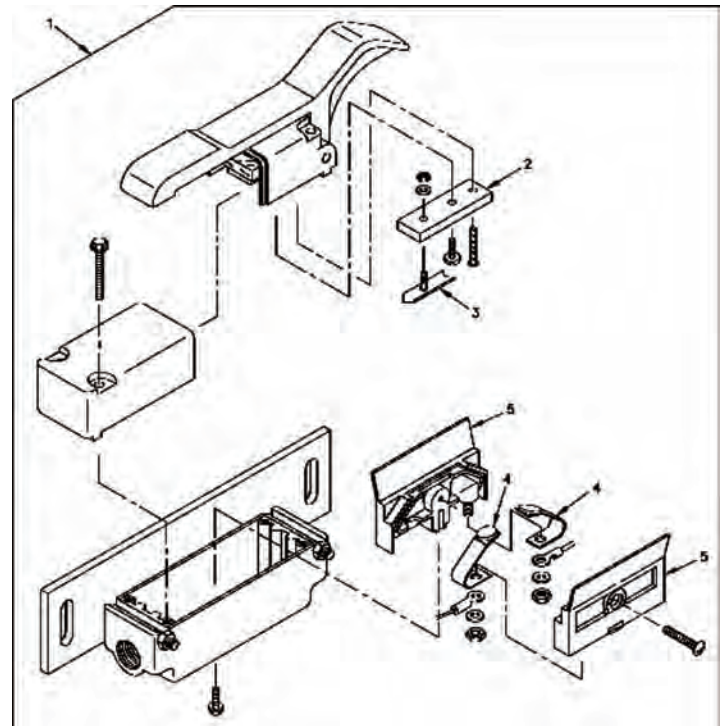
Car Hanger Packages

- Car Hanger
- Gate Switch
- Standard Clutch
- Car Hardware

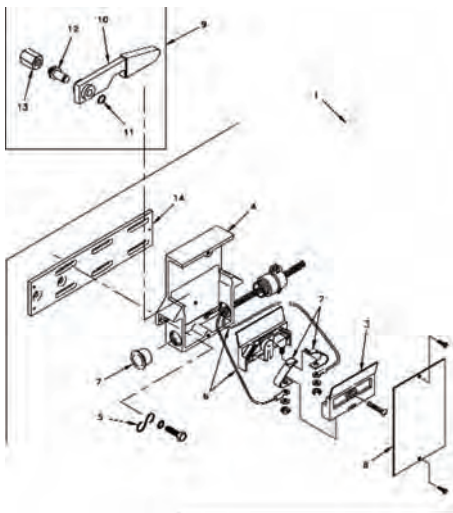
Harmonic Parts Options



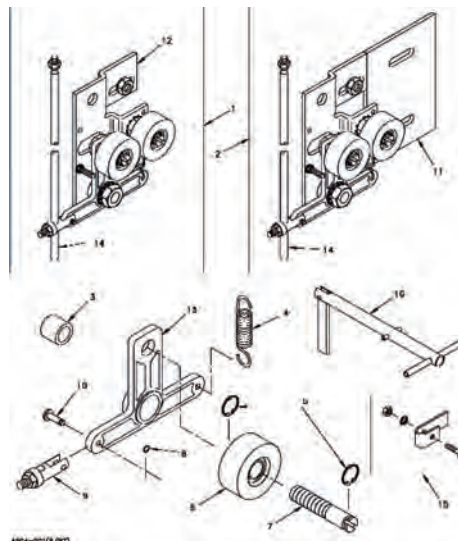
Car Side Clutches: restrictive - 1 3/4 inch sill application



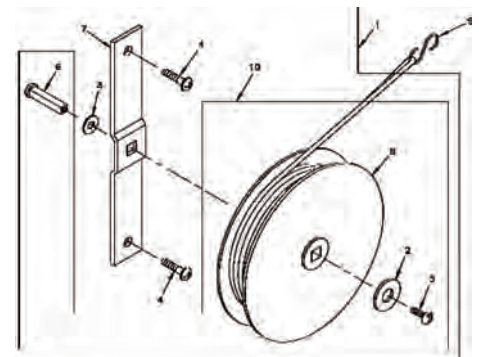
Car Side Car Gate Switch



Hatch Side Door interlocks: with 1 3/4 inch sill



Hatch Side Door drives: horizontal



Hatch Side Reel closers



ECS 109-4 DOOR BOARD

Not just a direct replacement, but **technically superior to the original existing equipment**. The ECS 109-4 board offers state-of-the-art performance and additional features. Its drop-in open loop ensures fit, form and function.

FEATURES AND BENEFITS

The board's innovative design allows it to be set and adjusted through the user-friendly LCD display which greatly reduces installation time.

- Advanced design reduces board and motor heat for superior drive efficiency.
- Faster install times - no potentiometers which eliminates adjustment errors.
- LCD user interface provides parameter adjustments in real time.
- LCD on Board Diagnostics with LED board function indicators.
- LCD Display Rotation allows you to work from either side of the operator.
- No need to replace relays.



Replaces MAC 104 (P-24783-XXX) and previous 3-board assembly on all existing MAC operators.

2741 S. 21st Avenue | Broadview, IL 60155-4639

ECS Toll Free 800.621.0759 | 708.338.9700 | Fax 708.338.9781
www.escalatorparts.com



QKS-TDC-LCD DOOR BOARD

ECS Part Number: A045.00010287

Replaces all **SCHINDLER TDC and STDC** boards in fit, form and function. **Includes all revision numbers** 999C001H, 223824, 223825 QKS door operators.

FEATURES AND BENEFITS

The board's innovative design allows it to be set and adjusted through the user-friendly LCD display to greatly reduce installation time.

- Advanced design reduces heat for superior drive efficiency.
- Faster install times - no potentiometers which eliminates adjustment errors.
- LCD user interface provides parameter adjustments in real time.
- LCD on Board Diagnostics w/LED board function indicators.
- LCD Display Rotation allows you to work from either side of the operator.

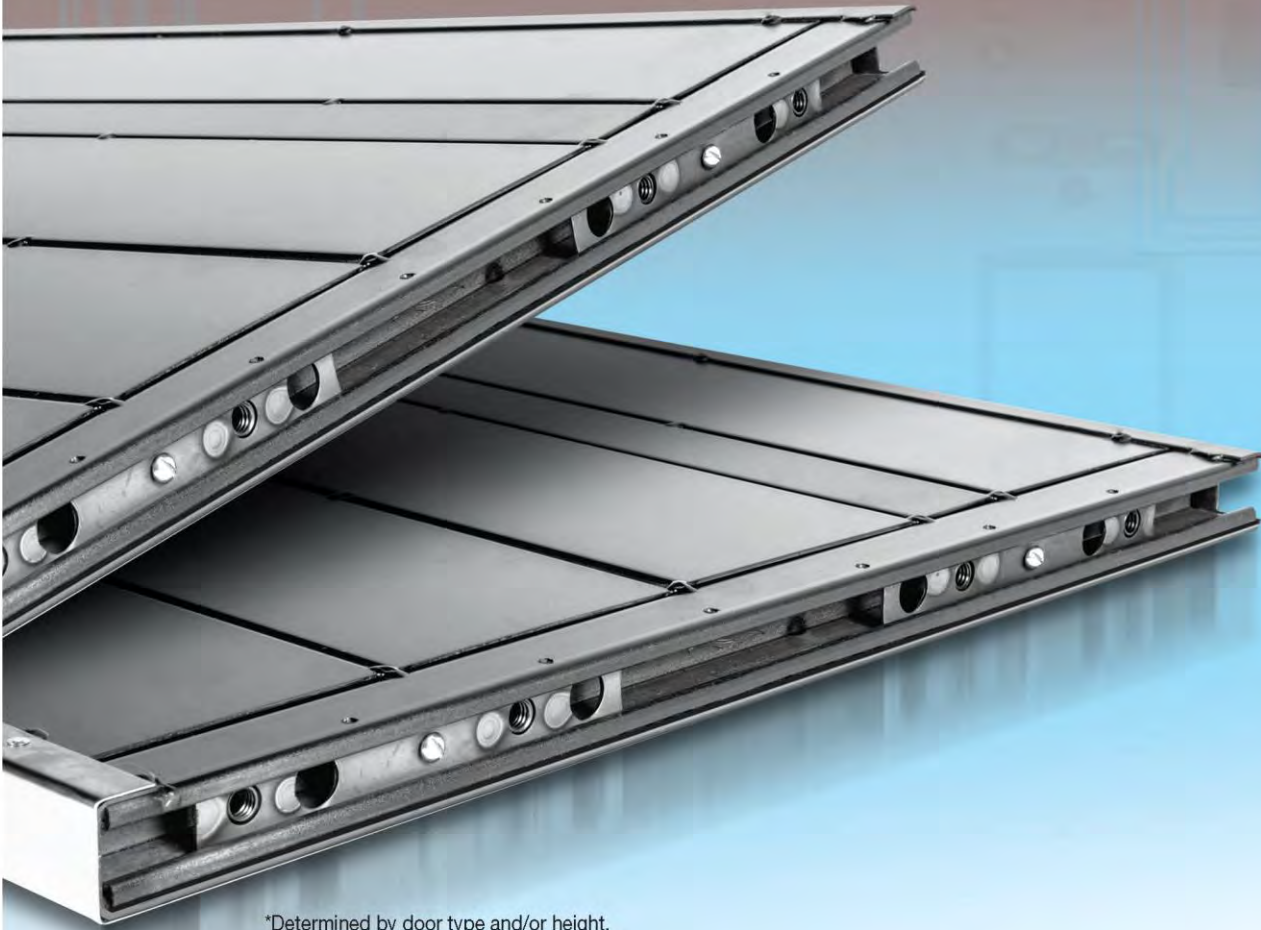
2741 S. 21st Avenue | Broadview, IL 60155-4639

ECS Toll Free 800.621.0759 | 708.338.9700 | Fax 708.338.9781
www.escalatorparts.com



HOISTWAY AND CAR DOORS

Replacement hoistway and car doors available as single-speed, center opening, or two-speed side slide. All replacement doors include hardware, gibs, retainers, and/or fire clips.* Center opening doors come with astragals. Doors are universal and can accommodate various types of equipment. And, our exclusive QuikDoor™ program includes standard sized doors in prime or SS#4, in stock and available to ship in as little as 48 hours for emergency shut down situations.



*Determined by door type and/or height.

ECS Corporation
2807 S. 25th Avenue | Broadview, IL 60155
800.621.0759 | sales@ecsparts.com
www.ecsparts.com



HOISTWAY & CAR DOORS



ES81 Style

- Made out of cold rolled steel
- 16 gauge core for prime and baked enamel
- Wrapped for SS#4
- Reinforcement modules are the back of the door
- Unhanded doors
- 3/8" – 16 or 1/2" – 13 pendant bolts
- Universal top channel
- Unistrut design with slide-in plate and drilling for pendants



QuikDoor™ Program*

Need a replacement door fast? Standard sizes in SS#4 or Pearl Prime are in stock and available to ship in as little as 48 hours for emergency shutdown situations.* Doors are unhanded and undrilled.

Two-speed or center opening – available in SS#4 or Pearl Prime

42" x 84"	48" x 84"	54" x 84"
42" x 96"	48" x 96"	54" x 96"

Single speed – available in SS#4 or Pearl Prime

36" x 84"	42" x 84"
36" x 96"	42" x 96"

*48 hour emergency shipping available for quantities of 5 sets or less. 10 day shipping available for quantities of 6 to 10 sets.

ECS Corporation
2807 S. 25th Avenue | Broadview, IL 60155
800.621.0759 | sales@ecsparts.com
www.ecsparts.com



OBSOLETE DOVER
PC BOARD



UPGRADE YOUR OBSOLETE EMERGENCY LIGHT WITH THE ECS MES788

Replaces Dover part number 9818420/118412/110938

Light Source: 2 white LEDs

Input Voltage: 120VAC, 50 to 60 Hz

Charging current: 12mA at 120V input, 100mA at battery

Lighting current: 400mA provided by battery

Emergency duration using 6V 5Ah battery with no lens, illumination only (no alarm):

 With fully charged battery: 24 lux

 After 6 hours : 22 lux

Plug and play configuration mounts with 4 screws to existing Dover bracket.

Lifetime warranty. Warranty does not cover vandalism, acts of God or improper installation or usage. Specifications are subject to change without notice.

Contact your sales rep or call 800-621-0759 to order yours today!

ECS Corporation

2741 S. 21st Ave, Broadview, IL 60155

Tel: 800-621-0759

www.escalatorparts.com

