

Elven Table Manners

by Bree Frost

for Blessington Pty Ltd



Ever wanted to breakfast in Rivendell or have high tea with forest fairies? Show the fantasy realm you care with these beautiful and very elvish inspired table decorations.

Bree shows you how to get better at free motion by using a ruler foot and templates on your Pfaff sewing machine to make either place mats, a table runner, a lazy-Susan mat, or a tray liner (or many or all of those things). It takes a teensy bit of practice but by starting small and not worrying too much about perfection, this enchanting set will have you sipping tea and eating cake.

Machine Requirements

1. PFAFF Sewing Machine and accessories
2. PFAFF Free Motion Ruler Foot part # P8211640-96
3. Inspira Ruler Foot Template set part # G6201457-96
4. Quilters Extension Table to suit your machine
5. Bobbins wound with quilting bobbin fill
6. Pfaff Clear Open Toe Applique Foot with IDT part # P8209160-96 (optional)

Requirements (for one placemat)

1. 55cm x 45cm top fabric
2. 55cm x 45cm backing fabric
3. 55cm x 45cm wadding (wool was used in this sample as it is heat resistance)
4. Removable fabric marking pen or chalk
5. Bent quilting safety pins
6. Quilting threads in 3 or more colours
7. Pattern (printed as per instructions)
8. 2m of 18mm bias binding pressed in half again
9. Wonder clips for binding
10. 1 or 2 colours of metallic thread (optional)

Preparation Instructions

1. Assemble the provided pattern
2. Trace the pattern on to the top layer of fabric but *do not* cut out yet.
3. Layer up your sandwich, lining your top layer, backing and wadding nicely.
4. Using your big square template from the ruler set, mark out the vertical and horizontal lines. Do not mark the diagonal lines as the placemat is not square.

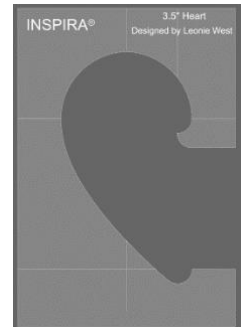


5. Using a ruler, rule from each corner to the centre point. (It will still look good if they don't line up corner to corner.)
6. Pin your sandwich to hold everything together nicely.



Template Instructions

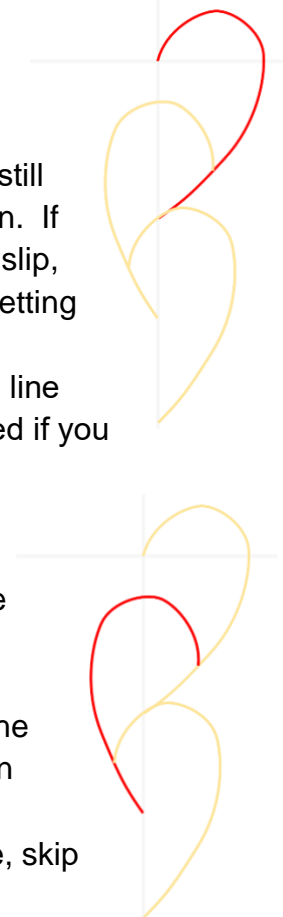
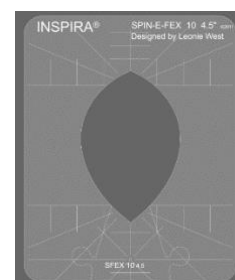
1. Thread up your machine with your favourite quilting thread, top and bottom.
2. Set your machine to the Free Motion Ruler Foot setting.
3. Find the dead centre of the project and bring the threads to the top of the work. Lay the threads out the back of the foot.
4. Line up the Heart Template with the ruler fitted onto the foot at the top "curl" and line up the bottom of where the point will be (judging the quarter inch in it will be is part of the practice so pay attention to it) with one of the perpendicular lines you drew.
5. Sew around the edge of the template



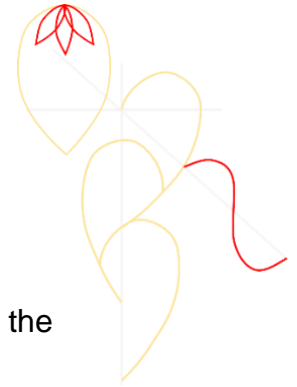
TIP: Press down and outward whilst doing this but make sure you're still loose enough in the shoulders and elbows to get a smooth action. If the template slips, consider getting template grip. If your hands slip, consider grippy quilting gloves. This is the bit worth practicing getting a smooth and accurate line.

NOTE: What you don't see on this project is all the times we unpicked a line that was lumpy, or the stitches were too long. Don't get frustrated if you aren't perfect straight away.

6. When you get to the bottom, back up the line by approx. 2.5cm which is vaguely where the vertical line at the bottom of your template meets the edge. Make sure the needle is down and remove the template.
7. Flip the template over and line up the top curl with the foot again. The template will not be square anymore to angle it so the end point is on your drawn line again. Sew around your second repeat.
8. If this is a 'long' side, repeat this process again. For the shorter side, skip to the next step after two curves.
9. With needle down remove the heart template and slide in the leaf shaped template and insert the puzzle piece to close it off. Line up both top and bottom points to the marked line.



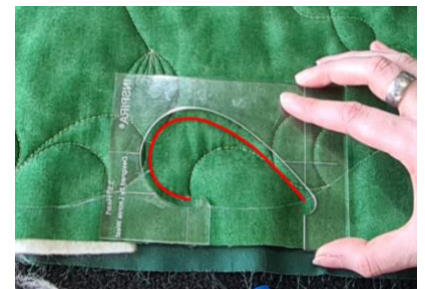
10. Sew around the edge of the template, making sure it goes all the way around the outside. When at the top again, release the template and centre it while you make three free motion leaves at the top so that it looks like a strawberry.
11. Tack and cut your thread.
12. Repeat this on the other three “compass points” so that it has a centre rosette and radiating arms.
13. To line up the next part, look for the diagonal line where it crosses the furthest part of the stitching from the centre.
14. Pull your threads up and out of the way and slide on the continuous figure 8 template and line it up at the **1** position.
15. Line up the number **2** position on the line.
16. Gently press against the template and sew until you hit the tiny corner at number **2**.
17. With the needle down, reset the template to position **1** and line up number **2** on the line and repeat until you can’t fit anymore whole shapes on the line.
18. Once again with the needle down spin the whole project around and using position **3** and **4**, work your way back up the line toward the beginning.
19. On the last shape, don’t cross any of the heart shapes; just end the line where it hits your original stitching.
20. Repeat this ropey line on the other three spokes.



This concludes the centre design!

TIP: For the next part: If you’re consistent, you don’t have to be accurate.

21. With the next bit you’re looking to make a swoosh-y tick shape around the edge, a bit like a famous sports brand. Line the heart template up near the strawberry bearing in mind that the actual line will be a quarter inch in from the edge of the template, so the trick is not to take chunks out of the already present shape.
22. Sew around the shape and stop at the pointy end with the needle down. Shift the template around slightly so the two ends meet up again but with slightly shortened shape, once again bearing in mind that quarter inch allowance.



NOTE: This bit also needs a bit of that same practice because you’re eyeballing the placement. It won’t take you long to work out how to aim.

23. Work your way around the edge of your design trying to keep inside the border you drew. There were 4 to a side in the sample, yours may differ.

The hard part is now finished!

Sewing Instructions

24. Decorate the larger blank fields with your choice of fill stitch. Chosen for this project were a bramble stitch in a dark green and a classic mini stipple in an emerald coloured thread, that alternated in each section around.
25. For the ticks around the edge, quilt a fitted looping pattern into the shape so they look a bit like peas in a pod (and to stop them looking too much like a trade mark)
26. *As an optional extra, change the shank and foot on the machine and install an open toe applique foot. Re-thread the top thread with a machine appropriate metallic thread and convert the machine back from free motion, then to a triple straight stitch. Don't forget to re-engage your IDT!
27. *Re-stitch over parts of the quilting design to really emphasize it (and to smooth out any little bumps and boo boos whilst previously getting used to the templates). This sample has a gold thread for the main centre design and a greener coloured metallic for the diagonal rope parts.
28. If you are hand making some matching bias binding, now is the time. Cut around the edge of your design leaving a quarter inch seam allowance so that the bias doesn't cover the lovely edging you've just done. Change the stitch to a narrow zig zag (or if you have the time, patience and appropriate machine make a narrow wiggle stitch which is just like a zig zag but with a straight stitch in between each zig). A zig zag stitch or similar helps catch both sides at once and is quicker than either the ditch method or hand sewing.
29. Change back to the standard OA presser foot.
30. Starting on a relatively flat edge, peg the bias to the edge of the mat with Wonder clips or similar and sew, easing around the curved and angled parts and doing the classic corner manoeuvre at the pointy bits. Some of the bulk may need to be tucked in if the corners are especially acute.
31. Finish the end of the bias by going over the leading end of the bias and then tucking the trailing end around, under and stitching past. Cut the left-over bit off close to the stitching. It should be at enough of an angle not to fray.





Press and admire

(Then plan out the rest of the matching set, where your favourite teacup sits and what flavour cake to bake)

Design Notes for the set: fabric sizes used for - Tray liner: 50cm x 40cm
 Lazy Susan Mat: 55cm x 55cm Table runner 50cm x 110cm.

Table runner and Lazy Susan mat are really just different shaped flat things that only need minor design tweaks when using the templates and are easy to make small adjustments if you work from the centre outwards.

For the tray liner;

- Make sure you have a tray to make it to before starting.
- The bottom square has two layers of wadding and no fill stitches to make it somewhat more heat proof.
- A straight stitch was added all the way around the bottom panel to help the sides fold up more efficiently. They'll still need more help with the iron.
- Square notches were removed and then seam allowance added to sew up the walls and make them stand up, then to finish were bound in the same binding. When binding the top edge, lay the bound side wall seams to the (same) side at all points and slow down to account for the bulk when sewing over them.

We can't wait to see what you create! Don't forget to share them with us on Instagram, tagging [@pfaff_sewing_australia](https://www.instagram.com/pfaff_sewing_australia) and using the hashtags #pfaffingaround or our Facebook page [Pfaff Australia](https://www.facebook.com/PfaffAustralia)