



**Asia-Pacific  
Economic Cooperation**

---

**2015/SOM1/EPWG/031**

Agenda Item: 8.5

## **Emergency Management at Banjarnegara Landslide- Indonesia**

Purpose: Information  
Submitted by: Indonesia



**7<sup>th</sup> Emergency Preparedness Working Group  
Meeting  
Subic, Philippines  
28-29 January 2015**



NATIONAL DISASTER MANAGEMENT AUTHORITY  
(NDMA/BNPB)

## Emergency Management at Banjarnegara landslide- Indonesia

**BNPB**

Subic, Philipina , 28 January 2015



### Cause of Landslide Analysis(1)

- The Jemblung hamlet, Sampang village, Karangobar regency is an area with medium category prone to landslide. In Banjarnegara there are 20 sub district with medium to high category prone to landslide.
- The causes of landslide in Jemblung hamlet are:
  - The soil of Telagalele hill is sediment of an old volcano, hence the soil solum is thick and is weathering.
  - The land slope is >60%. The crown slope landslide is at 60-80%.
  - Saturating land due to water from heavy rains on 10-11 Desember 2014.
  - The plantation at the top of the hill is seasonal (crops). Agriculture cultivation that does not consider land and water conservation, without cascades.

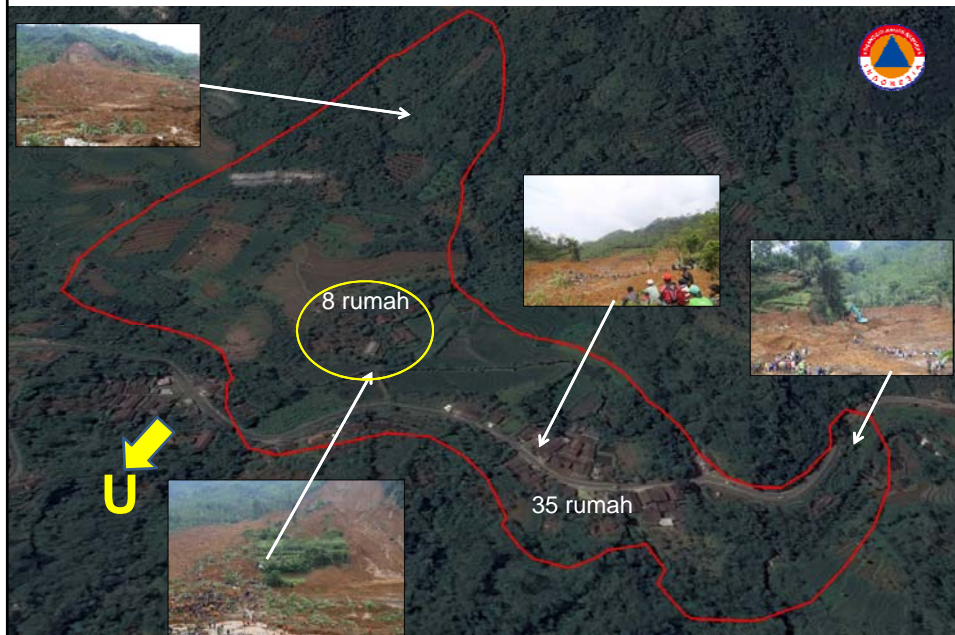


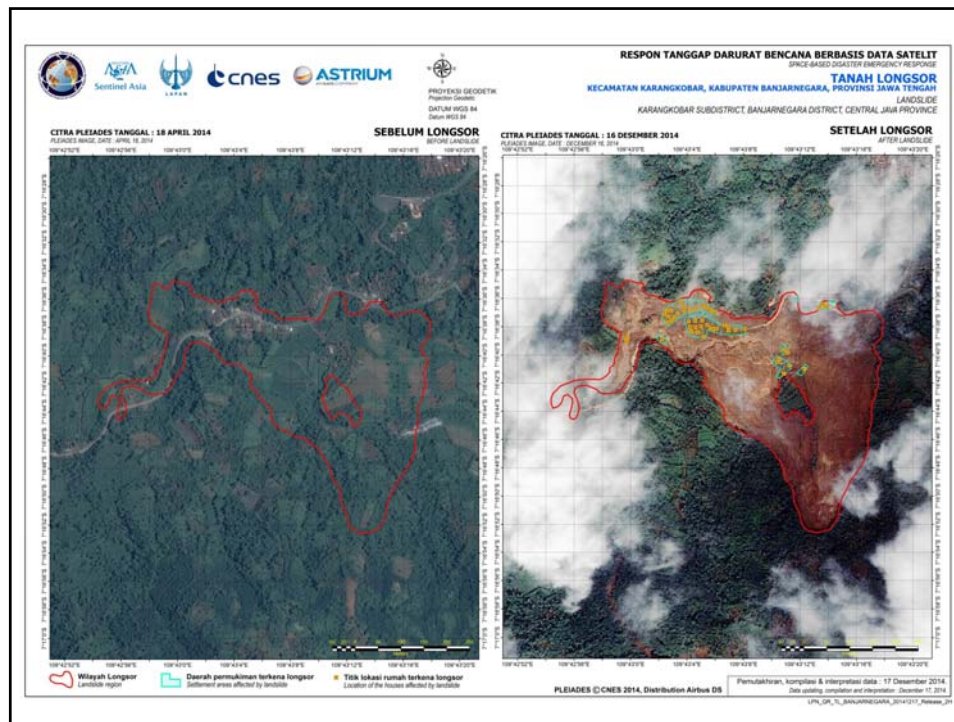
## Distribution of landslide in Karangkoobar



- Landslide materials are split into two due to containment of solid stones underneath that move following the slope.
- The landslide's length reached 1,2 km.
- Landslide material struck residential area at the bottom in less than 5 minutes.

## Areas struck by landslide





## Efforts

1. The Regent of Banjarnegara, SKPD, Military, Police, volunteers and the community, all participated in the search of the victims since (12-12-2014).
2. The Head of NDMA/BNPB and other senior officials of the Authority are presence at the location providing assistances to the Banjarnegara Regency.
3. Banjarnegara's Regent has issued state of emergency due to natural disaster since 4-19 December 2014. The state can be extended according to the development.
4. Banjarnegara's Regent has appointed the Commander of Banjarnegara District Military to lead the Landslide Emergency Response and Control.

## Efforts

5. The NDMA/BNPB coordinates national resources to assist and strengthen Banjarnegara's government in managing the emergency through:
  - Financial aid Rp 300 million (USD1/Rp 12,600) operational purposes. Logistic and equipment assistance.
  - The Ministry of Public Work provided 12 heavy machineries and 7 dump truck to clean the roads and evacuation.
  - Social Ministry donated Rp 5 million/family head, heir of the victims, and established public pantry also deploy personnel.
  - The Military, police and Basarnas (National Search and Rescue Agency) perform search and rescue mission.
6. The Central Java Governor has instructed Local Disaster Management Agency to also assist along with other Agencies from the surrounding district (Purbalingga, Wonosobo, Pekalongan, Purwokerto, Magelang, Temanggung, Kebumen).
7. President Jokowi has given his directions on 14-12-2014:
  - Communities residing in areas prone to landslide must take caution and increase awareness.
  - Search for victims must continue.
  - To finish road cleaning and landslide material in 10 days so that road access can be used again to recover the people's economy. → the Ministry of Public Works estimated that it can be concluded in 4 days.

## Efforts

8. The NDMA/BNPB is calculating the lost and damages caused by the slide.
9. The community expected that their relocation area will be safer and within the vicinity of Karangobar sub district. Relocation priority for Jemblung village community who escaped the disaster, while communities from the surrounding area will follow if they wish.
10. Banjarnegara's Regent will allocate the budget to free land and other infrastructure facilities. The NDMA/BNPB has been requested to provide a budget to construct houses for the relocated community.
11. The main principal of relocation is to build back better and safer. What to be reconstructed is not only the house but its community and life.



## Many Areas have been installed with Landslide Early Warning System.

**LEWS** (Landslide Early Warning System), such as in Banjarnegara, Bogor, Bandung, Karanganyar others. However, has the technology functioned? Apparently there are many discontinued cases, due to lack of sustainability. Unavailable operational and maintenance fund, no sense of belonging by the community, technical damages, seasonal, and other reasons that made the system unmaintained.



Contoh LEWS di Kab. Bogor

## Diseminasi Informasi Kebencanaan



Publikasi Data dan Informasi terkait kebencanaan dari BNPB, melalui website resmi BNPB di :

<http://bnpb.go.id/>

Data historikal kejadian bencana yang pernah terjadi di Indonesia, dapat dilihat di :

<http://dibi.bnpb.go.id/>



**BNPB**

NATIONAL AGENCY FOR DISASTER MANAGEMENT

Jl. Ir. H.Juanda No. 36 Jakarta Pusat 10120

-  Telp. : 021-3458400
-  Fax. : 021-3458500
-  Email : [contact@bnpb.go.id](mailto:contact@bnpb.go.id)
-  Website : [www.bnpb.go.id](http://www.bnpb.go.id)
-  Facebook : [www.facebook.com/bnpb.indonesia](http://www.facebook.com/bnpb.indonesia)
-  Twitter : [@BNPB\\_Indonesia](https://twitter.com/BNPB_Indonesia)
-  YouTube : [BNPBIndonesia](https://www.youtube.com/BNPBIndonesia)