



# Employee Rewards Program

---

Discounts are offered to employees of the LCMC affiliates including Children's Hospital, Touro Infirmary, University Medical Center, West Jefferson Medical Center, New Orleans East Hospital, Crescent City Physicians Inc., Woldenberg Village, and New Orleans Physician Services.

**Simply show your hospital employee ID badge or bring in a paycheck stub for the applicable discount.**

See the following pages for a list of discounts and coupons.

---



# Hotel Accommodations

---



## Sheraton New Orleans

500 Canal St. New Orleans, LA 70130  
(504) 525-2500  
sheratonneworleans.com

To book: visit website or call 888-627-7033  
Enter or ask for SET # 531162



## La Quinta Inns & Suites

301 Camp St. New Orleans, LA 70130  
(504) 598-9977  
lq.com

To book: visit website or call 1-800-753-3757  
Group reservation for 10+ rooms: (504) 598-9977  
Use Promo/Corporate Code LCMCHLTH7  
15% off best available nightly rate at Downtown New Orleans property  
10% off best available nightly rate at all other locations nationwide



## Marriott

JW Marriott New Orleans, New Orleans Marriot, Courtyard New Orleans French Quarter/Iberville, Courtyard New Orleans Downtown/Convention Center, Renaissance New Orleans Pere Marquette  
marriott.com

To book: visit hotel website  
Special Rates/Corporate/Promo Code: 1L4



## Le Méridien New Orleans

333 Poydras St. New Orleans, LA 70130  
(504) 525-9444  
lemeridienneworleanshotel.com

To book: visit website or call (888) 627-7033  
Enter or ask for SET # 531162  
\$149/\$109 Sunday-Thursday  
10% off Friday & Saturday



## Comfort Inn - Marrero

6751 Westbank Expy. Marrero, LA 70072  
(504) 361-9110  
choicehotels.com

To book: [choicehotels.com/louisiana/marrero/comfort-inn-hotels/la174](http://choicehotels.com/louisiana/marrero/comfort-inn-hotels/la174)

15% off best available rate



## Comfort Suites - Harvey

1611 Elton Court Rd. Harvey, LA 70058  
(504) 267-0701  
choicehotels.com

To book: [choicehotels.com/louisiana/harvey/comfort-suites-hotels/la181](http://choicehotels.com/louisiana/harvey/comfort-suites-hotels/la181)

15% off best available rate



## Hampton Inn - Harvey

1651 5<sup>th</sup> St. Harvey, LA 70058  
(504) 324-5688  
hamptoninn3.hilton.com

To book:

[hamptoninn3.hilton.com/en/hotels/louisiana/hampton-inn-and-suites-harvey-new-orleans-west-bank-MSYHAX/index.html](http://hamptoninn3.hilton.com/en/hotels/louisiana/hampton-inn-and-suites-harvey-new-orleans-west-bank-MSYHAX/index.html)

Corporate Account code: 0003044975

15% off best available rate



## Wyndham Garden – New Orleans East

10100 I-10 Service Rd. New Orleans, LA 70127  
(504) 378-7000  
wyndhamhotels.com

To book: [wyndhamhotels.com/wyndham-garden/new-orleans-louisiana/wyndham-garden-new-orleans-east/overview](http://wyndhamhotels.com/wyndham-garden/new-orleans-louisiana/wyndham-garden-new-orleans-east/overview)

\$79 nightly rate

# Entertainment

---



## New Orleans Pelicans

[nba.com/pelicans](http://nba.com/pelicans)

Contact: David Stern (504) 593-4979

Discount varies depending on opponent chosen



## Feld Entertainment

(866) 248-8470

[feldentertainment.com](http://feldentertainment.com)

For tickets: visit website or call and select Option 1 (mention LCMC Health)

Discount varies based upon event: Sesame Street Live!, Disney on Ice, Marvel Universe Live!, Disney Live!, Amsoil Arenacross, Monster Energy AMA Supercross, Monster Jam  
See flyer below



Audubon Nature Institute  
*Celebrating the Wonders of Nature*

## Audubon Nature Institute

[audubonnatureinstitute.org](http://audubonnatureinstitute.org)

Must present coupon below

\$3 off adult or \$2 off child's admission to Audubon Butterfly Garden & Insectarium, Audubon Aquarium, or Audubon Zoo



## Working Advantage

[workingadvantage.com](http://workingadvantage.com)

To sign up: [workingadvantage.com/account.php?sub=enroll](http://workingadvantage.com/account.php?sub=enroll)  
Company ID: 831685271

Up to 60% off a variety of entertainment, events and shopping opportunities

200 HENRY CLAY AVENUE  
NEW ORLEANS, LA 70118  
(504) 899-9511  
[WWW.LCMCHEALTH.ORG](http://WWW.LCMCHEALTH.ORG)

MEMBER HOSPITALS



# Retail/Service

---



## Coastland Federal Credit Union

New Orleans area branches  
(888) 561-5610 or (504) 834-2780  
coastlandfcu.org

\$250 cash back when you refinance your auto loan with Coastland  
Bring ID badge and the coupon below



## Enterprise Rent-A-Car

Locations throughout the U.S.  
1-800-736-8222  
enterprise.com

Reference ID L142444 to receive 5% off retail rates or mention  
you are an LCMC employee  
See flyer below



## Harry's Ace Hardware

1521 Metairie Rd. Metairie, LA 70005 (504) 896-1550  
3535 Magazine St. New Orleans, LA 70115 (504) 896-1500  
harrysacehardware.com

Contact: Scott Fox (504) 896-1500  
10% off with valid employee ID



## New Orleans Area Habitat for Humanity

2900 Elysian Fields Ave. New Orleans, LA 70122  
(504) 861-2077  
habitat-nola.org

Contact: Avery Strada (504) 609-3349  
Homeowner Hotline: (504) 609-3340  
ReStore: (504) 943-2240  
Volunteer Services: (504) 861-4121

200 HENRY CLAY AVENUE  
NEW ORLEANS, LA 70118  
(504) 899-9511  
WWW.LCMCHEALTH.ORG

### MEMBER HOSPITALS





## Uniforms by Bayou

3624 W. Esplanade Ave. Metairie, LA 70002 (504) 883-9112

5033 Lapalco Blvd. Marrero, LA 70072 (504) 371-7755

13488 Seymour Meyers Blvd. Covington, LA (985) 893-3700

[uniformsbybayou.com](http://uniformsbybayou.com)

Additional 10% off professional pricing for non-contract items



## AT&T

Louisiana/National

[att.com](http://att.com)

To purchase: [att.com/wireless/lcmcemployees](http://att.com/wireless/lcmcemployees) or bring ID badge to store and mention code FAN3068847

24% off qualified wireless service



## Verizon

Louisiana/National

[verizonwireless.com](http://verizonwireless.com)

To purchase: [verizonwireless.com/discounts](http://verizonwireless.com/discounts)

Validate work email (NOEH employees must validate with most recent pay stub) or bring ID badge to store.

**Corporate subscribers:** up to 22% off monthly discount price plan access for calling plans \$34.99 or higher; 35% off accessory purchases

**Employee subscribers:** 19% + additional 3% bonus discount; 25% off accessory purchases

Corporate volume discounts on wireless phones and advanced data devices



## Sprint

Louisiana/National

[sprint.com](http://sprint.com)

To purchase: [sprint.com/save](http://sprint.com/save) or bring ID badge to store

**Company Name:** Children's Hospital

**Membership:** Healthcare

Employees save up to 23% on phone plans and accessories

200 HENRY CLAY AVENUE  
NEW ORLEANS, LA 70118  
(504) 899-9511  
[WWW.LCMCHEALTH.ORG](http://WWW.LCMCHEALTH.ORG)

MEMBER HOSPITALS





## Lakeside Toyota

3701 N Causeway Blvd. Metairie, LA 70002

(504) 833-3311

[lakesidetoyota.com](http://lakesidetoyota.com)

Contact: Mike Chosa (504) 831-0821

Lakeside Toyota employee pricing

## Armstrong Relocation & Companies:

### United Van Lines

755 Airline Dr. Suite C Kenner, LA 70062

(504) 617-9150

[armstrongrelocation.com](http://armstrongrelocation.com)

Discount dependent on service

Long distance moving up to 65% off

Local relocation up to 25% off



ARMSTRONG RELOCATION  
& COMPANIES

## THE WOODHOUSE

*day spa*<sup>®</sup>

## The Woodhouse Day Spa

4030 Canal St. New Orleans, LA 70119

(504) 482-6652

[nola.woodhousespas.com](http://nola.woodhousespas.com)

15% off services and retail



## Take 5 Oil Change

Locations throughout the U.S.

[take5oilchange.com](http://take5oilchange.com)

Contact: John Barrett (504) 837-0670 ext. 113

\$10 off each oil change, coolant service and transmission

fluid exchange service

Visit website for coupons by location



## Insight

[insight.com/novation](http://insight.com/novation)

Special pricing on a variety of hardware and software solutions

Be sure to identify yourself as an LCMC employee

200 HENRY CLAY AVENUE  
NEW ORLEANS, LA 70118  
(504) 899-9511  
[WWW.LCMCHEALTH.ORG](http://WWW.LCMCHEALTH.ORG)

### MEMBER HOSPITALS





## The Notary Shoppe

Locations in Gretna, Harahan, Houma, Kenner, Marrero, Metairie,  
and New Orleans

(504) 410-3110

notaryshoppe.com

10% discount on notary fees



## Mattress Firm

New Orleans District

mattressfirm.com

10% off (not applicable to Tempur-Pedic, clearance, or  
pre-owned products)



## Planet Beach

5300 Tchoupitoulas St. New Orleans, LA 70115

(504) 891-8267

planetbeach.com

\$9 off any 5-month membership

\$20 spa day pass or 1 free spa service



## National Tire & Battery

Locations throughout the U.S.

ntb.com

See link for discount: [deals.tbccentral.com/LCMC](https://deals.tbccentral.com/LCMC)



## Orkin

Locations throughout the U.S.

orkin.com

Visit [partner.orkin.com](https://partner.orkin.com) or call (855) 398-7315

200 HENRY CLAY AVENUE  
NEW ORLEANS, LA 70118  
(504) 899-9511  
WWW.LCMCHEALTH.ORG

MEMBER HOSPITALS







## Atlas Van Lines

atlasvanlines.com

Contact: Nola Leverenz (972) 447-0040 ext. 5243  
or (800) 233-1229 ext. 5243

Moving and transportation services provided by Nelson  
Westerberg of Texas



## Campus Federal Credit Union

Locations in New Orleans, Shreveport, and Baton Rouge  
campusfederal.org

Contact: Janet Kratzberg (504) 210-8310 ext. 4285  
\$300 off closing cost for home equity loans and free  
financial education classes



## H&R Block

hrblock.com

Contact: Jewlia Love (703) 201-0090  
\$25 off new clients and tax identity shield for priors



## Regions Bank

4326 General Degaulle Dr. New Orleans, LA 70131  
(504) 394-2047 or (504) 394-4281  
regions.com

Regions@Work Program offers free financial seminars, no  
closing costs for home equity loans, and much more  
Visit [regions.com/small business/regions at work.rf](http://regions.com/small_business/regions_at_work.rf) for  
more details



## Cort Furniture

Locations throughout the U.S.  
(504) 733-8381  
cort.com

Call or email neworleans@cort.com

15% off Retail

25% off first month's rent on Commercial Office/Residential  
(minimum 3-month lease)

15% off Tradeshow and Events

200 HENRY CLAY AVENUE  
NEW ORLEANS, LA 70118  
(504) 899-9511  
WWW.LCMCHEALTH.ORG

MEMBER HOSPITALS





## Sam's Club

3900 Airline Dr. Metairie, LA 70001  
(504) 831-2911  
samsclub.com

\$10 gift card when you join Sam's Club or renew your membership



## SHERWIN-WILLIAMS

## Sherwin-Williams

Locations throughout the U.S.  
sherwin-williams.com

Provide cash account number 3821-9344-9 at checkout



## AAA Auto

Locations throughout the U.S.  
autoclubmo.aaa.com

Contact: Brittni Davis (636) 751-0271

Discount on first year membership with 2 free months  
See flyer below

200 HENRY CLAY AVENUE  
NEW ORLEANS, LA 70118  
(504) 899-9511  
WWW.LCMCHEALTH.ORG

MEMBER HOSPITALS



# Food/Restaurants/Eatery

---



## Trèo

3835 Tulane Ave. New Orleans, LA 70119  
(504) 304-4878  
treonola.com

Cocktail bar with second floor art gallery  
10% off Sunday – Wednesday with proof of ID badge



## Baskin-Robbins

706 S Carrollton Ave. New Orleans, LA 70118  
(504) 861-3342  
baskinrobbins.com

10% off purchase with employee ID (excludes discount items)



## Blaze Pizza

611 O'Keefe Ave. New Orleans, LA 70113  
(504) 325-2169  
blazepizza.com

10% off purchase with employee ID

# Housing

---



## 1<sup>st</sup> Lake Properties

Metairie, Kenner, River Ridge, Slidell, Mandeville, Covington, Baton Rouge, Ridgeland, MS and Picayune, MS  
1stlake.com

**\$100 off deposit**

**First application fee waived at any apartment communities**

**FELICITY**  
PROPERTY CO

## Felicity Property Co.

1470 Urania St. New Orleans, LA 70130  
(504) 586-8305  
felicitypropertyco.com

**First month free with a 13-month lease**

**MAY & ELLIS**

## May & Ellis Apartments

221 Chartres St. New Orleans, LA 70130  
(504) 586-8305  
mayandellis.com

**First month free**

**See flyer below**



## Crescent Club

3000 Tulane Ave. New Orleans, LA 70119  
(844) 717-6799  
crescentclubnola.com

**Reduced deposit for apartment homes from \$300-\$400 to \$99**

**See flyer below**

200 HENRY CLAY AVENUE  
NEW ORLEANS, LA 70118  
(504) 899-9511  
WWW.LCMCHEALTH.ORG

MEMBER HOSPITALS



# Fitness/Health

---

## Orangetheory Fitness

5300 Tchoupitoulas St. New Orleans, LA 70115

(504) 308-1232

[orangetheoryfitness.com](http://orangetheoryfitness.com)

Pre-opening LCMC Health rates until May 20, 2017, 1 free week of class prior to grand opening, \$30 off Premiere membership (unlimited classes), \$20 off Elite membership (8 classes/month), 50% off Ot Beat Chest Strap Heart Rate Monitor

See flyer below



## West Jefferson Fitness Center

1121 Medical Center Blvd. Marrero, LA 70072 (504) 349-6164

175 Hector Ave. Terrytown, LA 70056 (504) 349-6908

[wjmc.org/fitnesscenter](http://wjmc.org/fitnesscenter)

\$20 per month

See flyer below

## St. Charles Avenue Athletic Club

1600 St. Charles Ave. New Orleans, LA 70130

(504) 523-2582

[scaac-nola.com](http://scaac-nola.com)

\$10 off \$49 monthly membership

Month-to-month contract, no enrollment fee, no penalty to cancel, free classes, free parking, free towel service, one free personal training session and one indoor group training session



## CrossFit Full Bore

3333 Division St. Metairie, LA 70002

1516 River Oaks Rd. W, Elmwood, LA 70123

(985) 441-3717

[crossfitfullbore.com](http://crossfitfullbore.com)

20% off monthly rates

**CrossFit Full Bore**

200 HENRY CLAY AVENUE  
NEW ORLEANS, LA 70118  
(504) 899-9511  
[WWW.LCMCHEALTH.ORG](http://WWW.LCMCHEALTH.ORG)

MEMBER HOSPITALS



# Coupons & Flyers

## Audubon Nature Institute



**Welcome**  
**to Audubon Nature Institute**

**Enjoy your visit in New Orleans**

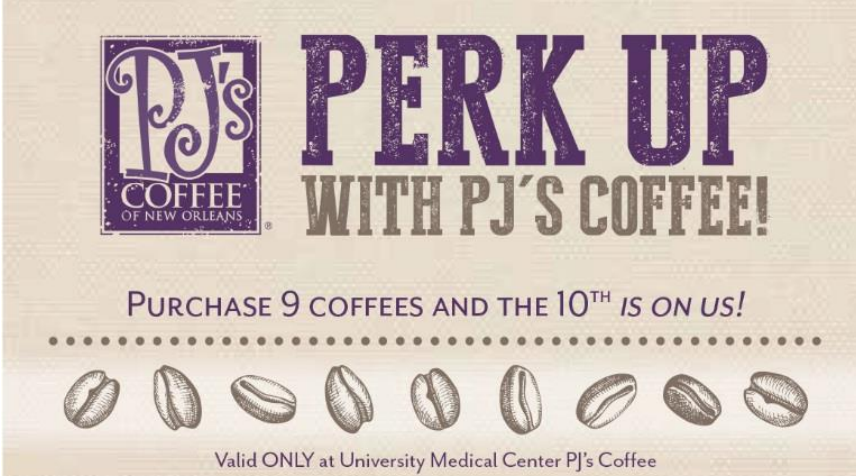
**\$3 off adult or \$2 off child's admission**  
to Audubon Butterfly Garden & Insectarium, Audubon Aquarium of the Americas or Audubon Zoo  
LCMC Health Employees  
Valid through December 31, 2017

Coupon good for four admissions. Not valid with senior, group or any other discounts. Discount applies to gate admission only, not valid for reservation by telephone. Coupon has no cash value. Coupon is not valid for Boo at the Zoo, Zoo-to-Do, Zoo-to-Do for Kids or other special admission events at any Audubon facility. One Entergy Giant Screen Theater admission included with Aquarium ticket.

CODE 344 1 2 3 4

## PJ's Coffee

Valid only at University Medical Center



**PJ'S COFFEE OF NEW ORLEANS**

# PERK UP WITH PJ'S COFFEE!

PURCHASE 9 COFFEES AND THE 10<sup>TH</sup> IS ON US!

Valid ONLY at University Medical Center PJ's Coffee

200 HENRY CLAY AVENUE  
NEW ORLEANS, LA 70118  
(504) 899-9511  
WWW.LCMCHEALTH.ORG

MEMBER HOSPITALS



# Feld Entertainment – Marvel Universe Live!



## Exclusive Savings for Employees & Families!

Smoothie King Center - New Orleans, LA

To purchase tickets, please call:  
**(866) 248-8740 and choose Option 1**

For questions call; or email:  
**JJohnson@feldinc.com**

\*Restrictions, exclusions and additional charges may apply. Subject to availability. No double discounts. Tickets at market pricing. Market prices are subject to supply and demand, and may change throughout and following the offer period. A facility fee of \$3 per ticket will apply. An additional club fee of \$4 per ticket will apply to sections 101, 102, 111, 112, 113, 114, 123 and 124. A one-time \$5 per order processing fee will apply. This flyer is not a coupon and cannot be redeemed at the box office.  
**NO REFUNDS, EXCHANGES OR PRICE ADJUSTMENTS.**  
**ALL SALES ARE FINAL.**

FRIDAY JUNE 23	SATURDAY JUNE 24	SUNDAY JUNE 25
	11:00 AM	
	3:00 PM	1:00 PM
7:00 PM	7:00 PM	5:00 PM

**Tickets Start At \$15\***

**More pricing available,  
please call for more information!**

**DEADLINE TO ORDER: MONDAY, JUNE 19, 2017 AT 11:00 AM CDT**

200 HENRY CLAY AVENUE  
NEW ORLEANS, LA 70118  
(504) 899-9511  
WWW.LCMC.HEALTH.ORG

MEMBER HOSPITALS



# Coastland Federal Credit Union

## YOU'RE INVITED

Coastland is a full service financial institution here to serve YOU!

We offer Share (Savings) Accounts, Share Draft (Checking) Accounts, Online Banking, Mobile Banking as well as Loans including VISA Credit Cards, Auto Loans & Home Loans!

We invite you to become a member today!

---

Membership requirements are noted below.

As an LCMC Health Employee, you are eligible for membership with Coastland Federal Credit Union. For more information, please visit our website or give us a call at 504.834.2780 to speak with a Member Service Representative!

Currently, Coastland has 3 branches in the New Orleans area — our branch hours are Monday thru Friday 8:00am to 4:00pm. We look forward to serving you!



504.834.2780 ph

[www.coastlandfcu.com](http://www.coastlandfcu.com)

Federally insured by NCUA



### - \$250 CASH -

Get \$250 CASH BACK when you switch your Auto Loan over to us!

--- Exclusive offer for LCMC Health Employees ---

Bring this coupon with you and your badge to show proof of employment.

Rates as low as 1.99%<sup>APR</sup> up to 60 months - Annual Percentage Rate (APR) is based on application + credit history. Includes 2015 - present vehicles only. **REPAYMENT EXAMPLE:** For a \$25,000 new car loan for a term of 60 months with a 1.99%<sup>APR</sup>, the monthly payment will be \$438.00.



504.834.2780 ph [www.coastlandfcu.com](http://www.coastlandfcu.com)

200 HENRY CLAY AVENUE  
NEW ORLEANS, LA 70118  
(504) 899-9511  
[WWW.LCMCHEALTH.ORG](http://WWW.LCMCHEALTH.ORG)

MEMBER HOSPITALS





# Comfort Inn – Marrero



200 HENRY CLAY AVENUE  
NEW ORLEANS, LA 70118  
(504) 899-9511  
WWW.LCMCHEALTH.ORG

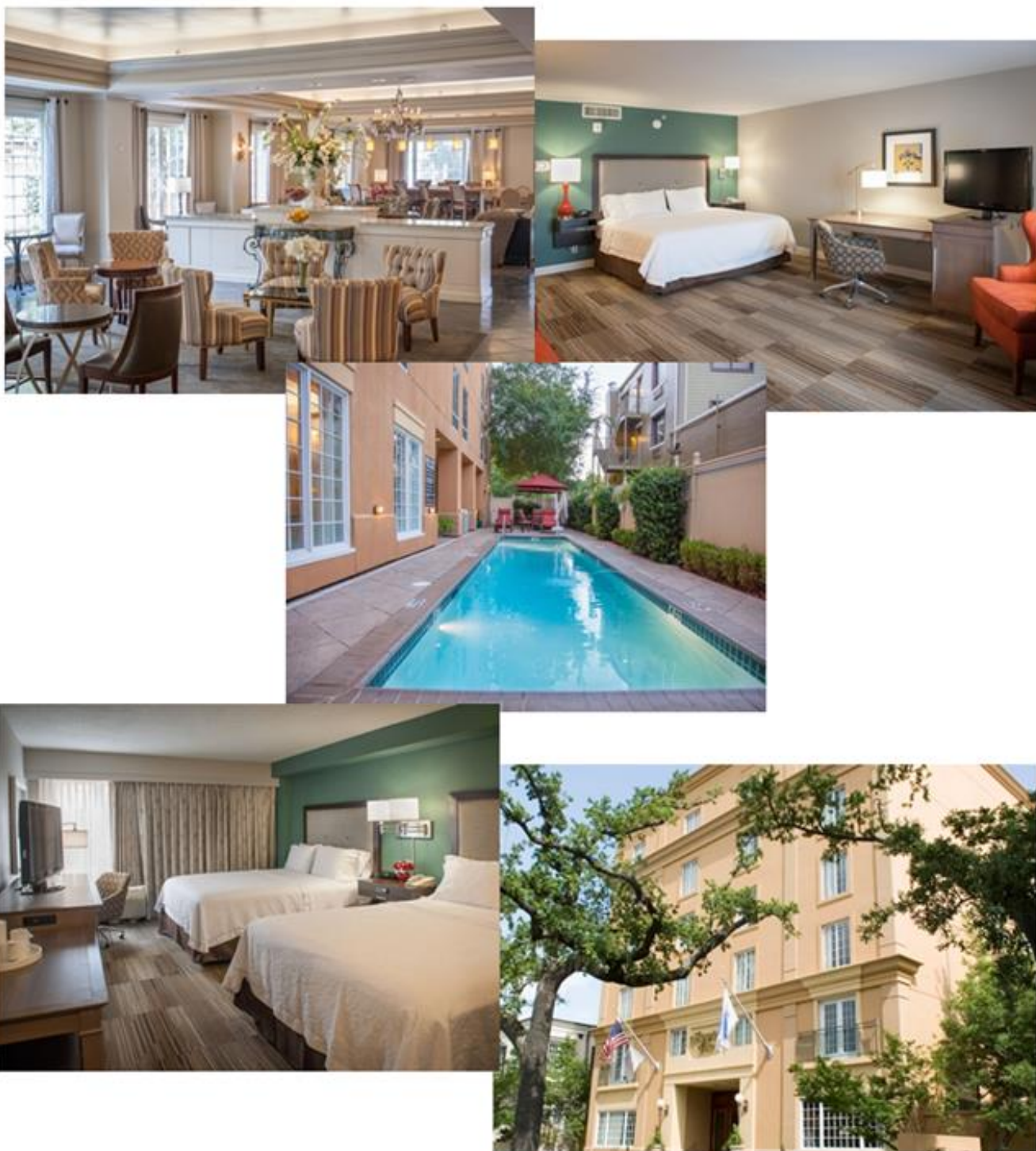
MEMBER HOSPITALS



# Hampton Inn – Garden District

Corporate Summer Special June 1<sup>st</sup> – September 30<sup>th</sup>

\$139/night

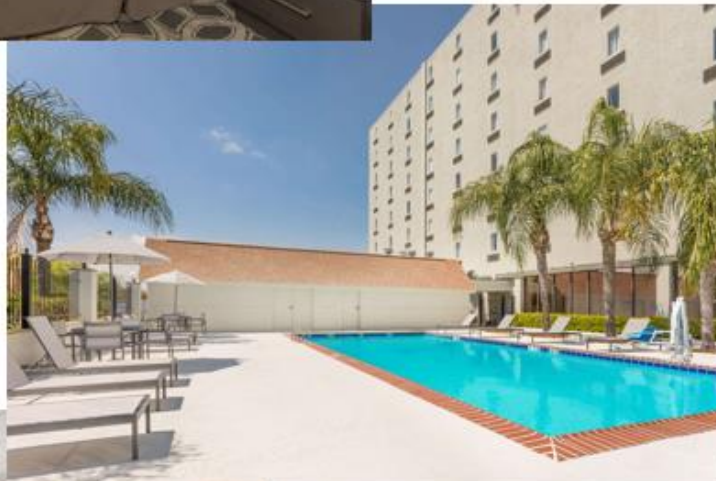


200 HENRY CLAY AVENUE  
NEW ORLEANS, LA 70118  
(504) 899-9511  
WWW.LCMCHEALTH.ORG

MEMBER HOSPITALS



# Wyndham Garden – New Orleans East



200 HENRY CLAY AVENUE  
NEW ORLEANS, LA 70118  
(504) 899-9511  
WWW.LCMCHEALTH.ORG

MEMBER HOSPITALS



# Comfort Suites – Harvey



200 HENRY CLAY AVENUE  
NEW ORLEANS, LA 70118  
(504) 899-9511  
WWW.LCMCHEALTH.ORG

MEMBER HOSPITALS



# May & Ellis Apartments



## MAY & ELLIS

Thoughtfully Designed French Quarter Living Studio to three bedroom homes

Live two blocks from the Canal Street Streetcar, walk to French Quarter restaurants and enjoy river views from the rooftop terrace.

**First month's rent free**

[www.mayandellis.com](http://www.mayandellis.com) 504.906.1146  
221 Chartres Street, New Orleans



200 HENRY CLAY AVENUE  
NEW ORLEANS, LA 70118  
(504) 899-9511  
[WWW.LCMCHEALTH.ORG](http://WWW.LCMCHEALTH.ORG)

MEMBER HOSPITALS



# Crescent Club

*Resort lifestyle.  
Downtown convenience.*

**FREE  
GARAGE  
PARKING**

Every Crescent Club Apartment Comes  
With Free Gated Covered Parking

1 & 2 BEDROOM RENTAL APARTMENTS  
**CRESCENTCLUBNOLA.COM**  
504.827.5759 3000/3100 Tulane Ave. 🏠

**CRESCENT CLUB**  
NEW ORLEANS

504+

827.5759 t  
827.5760 f

3000/3100 TULANE AVENUE  
NEW ORLEANS, LA 70119

CRESCENTCLUBNOLA.COM

*Delight in the details*

Come see why the Crescent Club is New Orleans' hottest new rental residence! With first class amenities, thoughtfully designed floor plans, and Energy Star® green building construction, it's no wonder why the Crescent Club is quickly becoming the most talked about community in town.

**NOW LEASING ONE & TWO  
BEDROOM APARTMENTS**  
IN THE HEART OF MID-CITY, MINUTES TO DOWNTOWN

DOMAIN COMPANIES 🏠

200 HENRY CLAY AVENUE  
NEW ORLEANS, LA 70118  
(504) 899-9511  
WWW.LCMCHEALTH.ORG

MEMBER HOSPITALS



# Orangetheory Fitness

**LOWEST RATES  
EVER!**

**LIMITED TIME OFFER!**

**CALL 504.308.1232**

**JOIN NOW - ENJOY SPECIAL PRE-OPENING MEMBERSHIP RATES.**



**KEEP BURNING**

- BURN 500+ CALORIES IN 60 MINUTES\*
- KEEP BURNING CALORIES FOR UP TO 36 HOURS\*
- COACH-LED GROUP WORKOUTS
- FOR ALL FITNESS LEVELS

*New Orleans - Uptown*

*5300 Tchoupitoulas St. | New Orleans, LA 70115 | 504.308.1232*

**FIND OUT MORE AT [ORANGETHEORYFITNESS.COM](http://ORANGETHEORYFITNESS.COM)**

Orangetheory®, DTF® and other Orangetheory® marks are registered trademarks of Ultimate Fitness Group LLC.

©Copyright 2017 Ultimate Fitness Group LLC and/or its affiliates. First-time visitors and local residents only. Certain restrictions apply.

\*Visit [orangetheoryfitness.com/termsofuse](http://orangetheoryfitness.com/termsofuse) for additional information.

200 HENRY CLAY AVENUE  
NEW ORLEANS, LA 70118  
(504) 899-9511  
[WWW.LCMCHEALTH.ORG](http://WWW.LCMCHEALTH.ORG)

MEMBER HOSPITALS



# Enterprise Rent-A-Car

The Enterprise Way

# Need a rental?

LCMC Health employees, whether you need a car, truck or van,  
Enterprise is the perfect choice.

To make a reservation, visit [enterprise.com](http://enterprise.com) or call 1 800 rent-a-car.  
Reference Customer # L142444.



We'll pick you up.®

Pickup subject to program and other restrictions. Enterprise, We'll Pick You Up and the "Y" logo are registered trademarks of Enterprise Rent-A-Car. ©2019 Enterprise Rent-A-Car. 190284-0010

200 HENRY CLAY AVENUE  
NEW ORLEANS, LA 70118  
(504) 899-9511  
WWW.LCMCHEALTH.ORG

MEMBER HOSPITALS





# West Jefferson Fitness Center



## LCMC EMPLOYEES KICK START YOUR FITNESS



PROUD MEMBER OF LCMC HEALTH

Welcome LCMC Health  
System Employees!  
Join the WJ Fitness Center

**Only \$20  
Per Month**

monthly draft by EFT

Two Convenient Locations:

Marrero • 1121 Medical Center  
504.349.6164

Terrytown • 175 Hector Ave.  
504.349.6908

Proof of employment (show your badge) needed from one of the following:

Proud Members of the  
LCMC Health System:



**504.349.6908**

[wjmc.org/fitnesscenter](http://wjmc.org/fitnesscenter)

200 HENRY CLAY AVENUE  
NEW ORLEANS, LA 70118  
(504) 899-9511  
[WWW.LCMCHEALTH.ORG](http://WWW.LCMCHEALTH.ORG)

MEMBER HOSPITALS



# AAA Auto



## SPECIAL OFFER FOR LCMC EMPLOYEES

# JOIN AAA TODAY FOR ONLY \$40<sup>1</sup>

### WHEN YOU ENROLL IN AUTOMATIC RENEWAL<sup>2</sup>

Your membership can more than pay for itself with these great benefits!



#### 24-hour Roadside Assistance<sup>3</sup>

- You are covered in any car, SUV or pickup truck, any time, day or night, even if you are not the driver
- Just one tow could save you up to \$75!



#### FREE Shopping Discounts

- Take advantage of our prenegotiated discounts of up to 50% on apparel, shoes, dining, electronics, entertainment and more.



#### FREE Identity Theft Monitoring<sup>3</sup>

- You receive email alerts of key changes detected on your Experian<sup>®</sup> credit report as well as fraud resolution support.



#### Full Service Leisure Travel Agency

- Take advantage of special, member-exclusive perks such as shipboard credits and free excursions.

START SAVING NOW!  
CONTACT ME TODAY:

Brittni Davis  
636-751-0271  
Davis.Brittini@aaamissouri.com

Join today and save! Special is not available online or in stores. Discounts on all levels of memberships!!



### Join now and you'll receive a first year membership for an eligible family member, for FREE (\$28 value).<sup>1</sup>

<sup>1</sup> With this offer you pay \$40 (\$20 admission fee waived and \$10 discount on primary dues) and receive a free one-year Associate Membership at the Classic level of benefits when you sign-up for automatic renewal. A \$35 non-refundable service fee may apply each time you use roadside assistance on the same day you become a member. An individual may have only one membership. See the Member Guide for more information. Member eligibility, dues, fees, benefits and services subject to change without notice. Applications subject to approval and acceptance by AAA. Offer expires 12/31/17. <sup>2</sup> By signing up for automatic renewal, your credit/debit card or bank account will automatically be billed each year for your annual membership dues then in effect. Each year before your membership expires, AAA will send a statement of your current services and renewal dues amount. You may cancel automatic renewal at any time by contacting AAA. Unless you contact AAA to make changes or cancel automatic renewal, AAA will automatically renew your membership and charge the dues shown on your statement to your account on file. <sup>3</sup> Each member is allowed up to 4 free Roadside Assistance service calls per membership year, including tows either back to the service provider or to a destination within three miles of the point of breakdown. Roadside Assistance is generally provided by independent service providers and is limited to the U.S. and Canada. Certain Roadside Assistance service conditions and restrictions apply. See the Member Guide for more information. <sup>4</sup> ProtectMyID Essential and ProtectMyID Deluxe are provided by ConsumerInfo.com, Inc., an Experian company. To be eligible to enroll in either ProtectMyID Essential or ProtectMyID Deluxe, you must be 18 years of age or older and a current valid AAA Member. Products subject to change or termination at any time without notice. Certain terms, conditions and restrictions apply. AAA offers ProtectMyID - Essential to its members for Free as a benefit of membership. AAA offers other Identity Theft Monitoring services at member-discounted pricing. Valid AAA membership required at time of enrollment.

Copyright © 2017 Auto Club Services, LLC. All Rights Reserved.

200 HENRY CLAY AVENUE  
NEW ORLEANS, LA 70118  
(504) 899-9511  
WWW.LCMCHEALTH.ORG

MEMBER HOSPITALS

