



Endeavour 37 – Rubicon

Make:	Endeavour	Boat Name:	Rubicon
Model:	37	Hull Material:	Fiberglass
Length:	37 ft	Draft:	4 ft 6 in
Price:	\$ 45,000	Number of Engines:	1
Year:	1979	Fuel Type:	Diesel
Condition:	Used	Number:	5079975
Location:	Seattle, WA, United States		

Rubicon

A very well thought out cruising design, the Endeavour 37 is a stout and offshore capable cruising boat with a very unique interior layout. *Rubicon's* open interior shows clean and dry with space for entertaining while at the same time offering a private owners cabin to port. With the centrally located galley the cook will be in the middle of the entertainment rather than hidden back in the corner.

Sail Northwest

7001 Seaview Ave NW, ste 140, Seattle, WA 98117, United States
Toll-free: 877-213-7441 Tel: 206 286 1004 sales@sailnorthwest.com
<http://sailnorthwest.com>

Rubicon has been thoughtfully upgraded over the years and is ready for a new owner to take her sailing in some of the most amazing cruising waters the world has to offer, the Pacific Northwest.

Measurements

LOA:	37 ft 5 in	Ballast:	7500 lb
LWL:	30 ft		
Beam:	11 ft 7 in	Displacement:	20000 lb
Max Bridge Clearance:	46 ft	Fuel Tanks Capacity:	55 gal
Max Draft:	4 ft 6 in	Fresh Water Tanks Capacity:	200 gal
		Number of double berths:	3
		Number of Cabins:	2
		Number of Heads:	1

Propulsion

Engine #1

Engine Make:	Perkins	Engine Year:	1979
Engine Model:	4.108	Hours:	1625
Primary Engines:	Inboard	Power:	50 hp
Drive Type:	Direct Drive	Propeller Type:	3 Blade

Additional Information

Exterior

- Harken Roller Furling
- 45lb CQR Anchor
- Simpson-Lawrence Electric Windlass
- Whisker Pole w/ adjustable Mast track
- 2 each Lewmar 40 Halyard winches on Mast
- 1 each Lewmar 8 reefing Winch on Boom
- Soft Vang
- Tri Sail track on Mast
- Retractable Step on Mast to reach Headboard
- 4:1 Mainsheet

- Mainsail Traveler w/ stops
- Boom Topping Lift
- Split Backstay
- Wheel Steering
- 2 each Lewmar 46 Self Tailing Winches

Sails

- Dacron Mainsail
- Dacron Genoa w/ U.V. cover
- Storm Trysail
- Storm Jib
- Mainsail Cover

Electronics/Electrical

- APC Systems Monitor
- Autohelm Speed
- Autohelm Depth
- Kenwood CD Player
- ADS Cabin Speakers
- Standard Horizon 78 Series VHF
- Newmar Nav 101 RDF
- Apelco DXL 6300 LoranC
- Battery Selector Switch
- AC & DC breaker panel

Galley

- Double Basin Stainless Steel Sink
- Manual Fresh Water Foot Pump
- Pressure Hot and Cold Fresh Water
- Top loading Ice Box
- Magic Chef 3 burner gimbaled Propane Stove/Oven
- Front Loading AC/DC Frig
- AC/Motor hot water tank
- Propane on demand hot water

- 100 Gallon water tank

Head

- Manual Raritan Toilet
- Single Basin Sink
- Manual Foot Pump Fresh Water
- Pressure Hot/Cold Faucet w/ Shower Head

Auxiliary

- Perkins 4-108
- 1621 hours shown
- 15" 3 blade MaxProp

Extras

- Dickenson Diesel Heater w/ separate day tank
- Radar Reflector
- Manual Bilge Pump in Cockpit
- Achilles 9' RIB
- Boom tent
- Bottom Sider Custom Cockpit Cushions
- Life Jackets
- Life Sling
- Cockpit table
- Throw able cushions

Owner Upgrades

- Tri-sail with mast track
- Storm Jib
- Aft Scuppers enlarged
- Additional Scuppers installed
- Winches replaced with 46 Self Tailing
- #40 winches moved to mast
- Mast winches moved to reefing system
- 15" three blade Max Prop

- Electric Anchor Windlass
- 45lb Anchor
- Roller Furling
- Current propane system with hose for BBQ
- Paloma Water Heater
- Nova Lift outboard crane
- Custom cockpit cushions
- Reupholstered Salon & Stateroom cushions
- Built custom telescoping table legs for forward Bunk

Disclaimer

The Company offers the details of this vessel in good faith but cannot guarantee or warrant the accuracy of this information nor warrant the condition of the vessel. A buyer should instruct his agents, or his surveyors, to investigate such details as the buyer desires validated. This vessel is offered subject to prior sale, price change, or withdrawal without notice.

Photos



Rubicon



Salon



Salon



Looking Aft



Starboard Galley



Galley



Frig



Looking Aft Portside



Port aft



Head



Head



Head from Stateroom



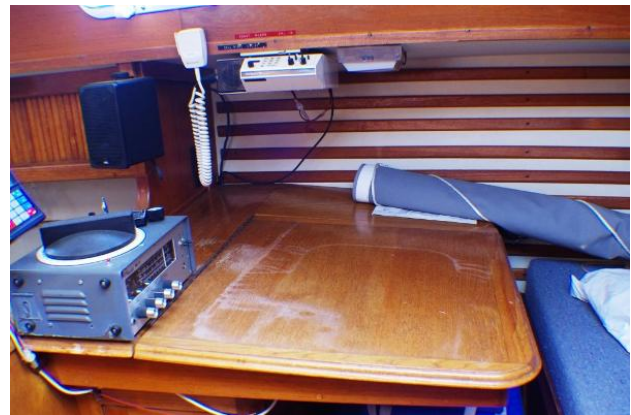
Stateroom storage



Stateroom bunk



Stateroom bunk



Nav area



Nav area looking forward



Nav area looking forward



Port Bow



Port Side



Starboard Side



Starboard Quarter



Foredeck



Cabin Top



Cabin Top



Starboard Cabin Top



Port Cabin Top



Port Cockpit



Cockpit



Companion Way



Aft Cabin Top



Companionway



Electronics



Auxiliary Controls



Heater



Propane locker



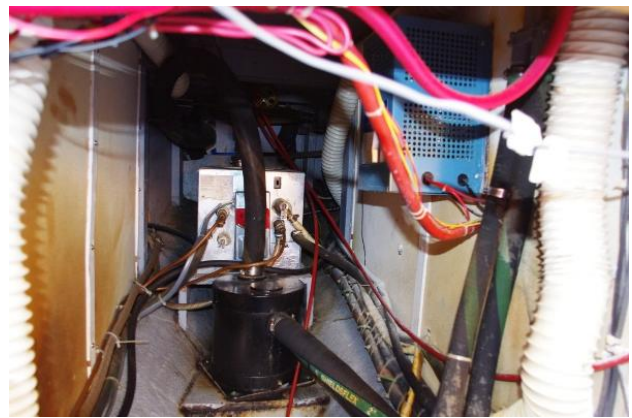
Hour Meter



Auxiliary



Auxiliary



Under Cockpit



Transom



Transom



Port Quarter



Port Quarter



Starboard Quarter



HIN