

New Holland Box Spreaders



130 145 155 165 185 195



The most reliable, most durable
spreaders you can buy



Engineered for durability... from the ground up

Building the best box spreaders in the business starts with giving customers the performance and reliability features they need.

1 Extra steel frame members in the spreader's undercarriage provide added box strength.

2 Heavy-duty axles with high-strength steel plates and spindles reduce stress on the frame. Standard on all models, these axles are a separate component from the box for easy servicing.

3 A-frame hitch made of high-strength, lightweight steel extends far back under the bed. This directs pulling forces to the axles and carries the load instead of pulling it.

4 Sturdy, formed steel frame member protects the front of the floor.

5 Maximum-strength, easy-cleaning side sheets are designed without ribs.

6 Optional slurry sides — a New Holland exclusive — increase capacity by about 25% and reduce splash-over.



Floors are made of $\frac{3}{4}$ " x 6" high-density polyethylene (HDPE) tongue-and-groove planks for a tight, leak-free fit.

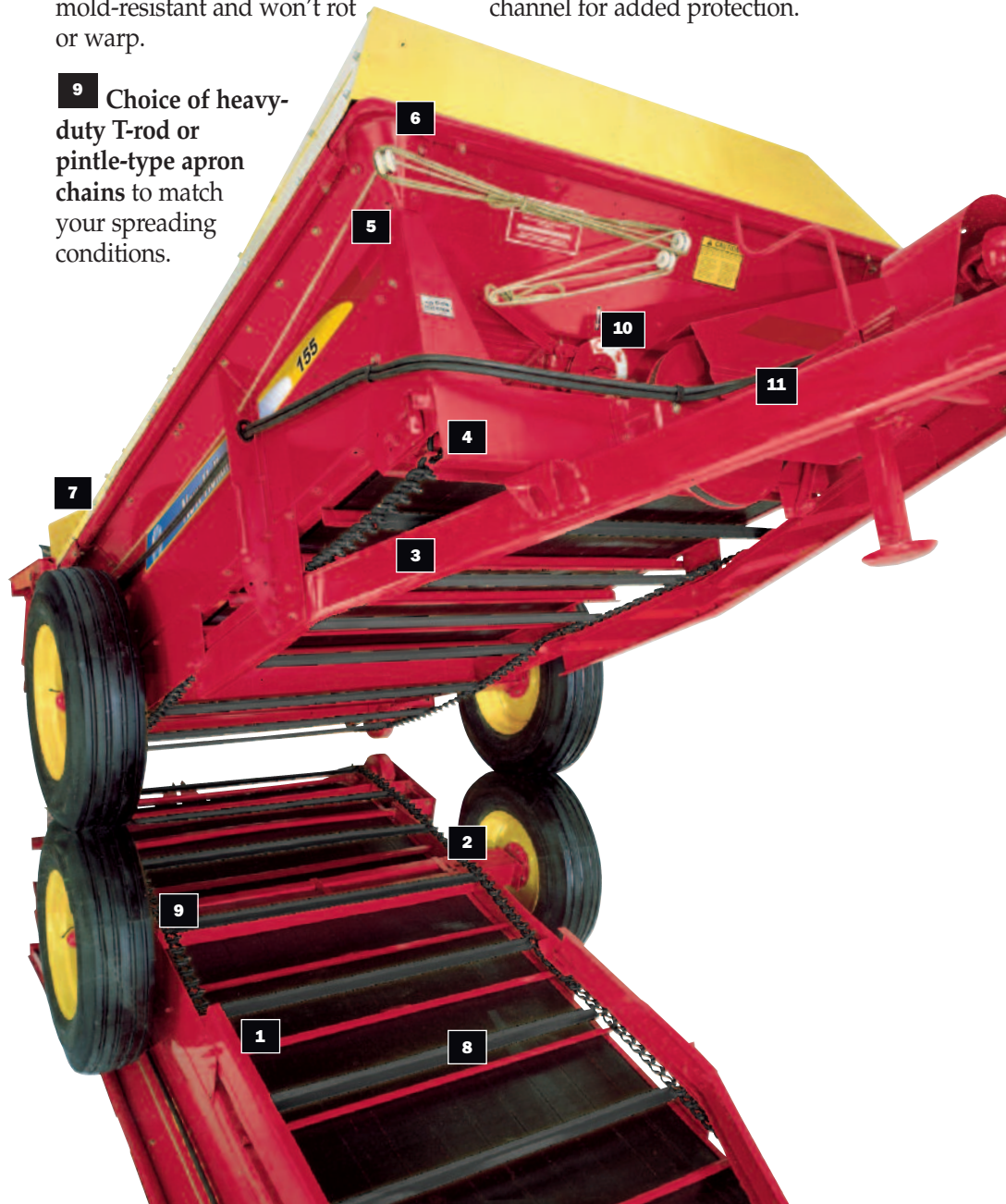
7 Sides and endgate made of special steels are four times more corrosion-resistant and twice as strong as ordinary steels.

8 Unique "floating floor" made of high-density polyethylene (HDPE) tongue-and-groove planks expands and contracts without putting stress on the frame or sides. It won't chip, crack, peel, or splinter—plus it's acid- and mold-resistant and won't rot or warp.

9 Choice of heavy-duty T-rod or pintle-type apron chains to match your spreading conditions.

10 Rotary quadrant control lets operator set apron speed from the tractor. Choose from Neutral, Slow Unloading, Fast Unloading, or Clean-Out positions. An optional hydraulic drive on Models 185 and 195 provides more variable spreading rates.

11 Rugged, heavy-duty jack swings out of the way for transport. It's mounted inside the hitch channel for added protection.



SPECIFICATIONS

Models	130	145
Capacities (ASAE Ratings according to ASAE Std. ASAE S324T)		
Heaped, single beater, cu. ft. (m ³)	144 (4.08)	182 (5.15)
Heaped, double beater, cu. ft. (m ³)	166 (4.70)	215 (6.10)
Struck level, cu. ft. (m ³)	88 (2.49)	110 (3.11)
Struck level, slurry sides, cu. ft. (m ³)	—	143 (4.05)
Bushels – Old Rating	133	173
Maximum net load lb. (kg)	7,000 (3175)	8,500 (3856)
Dimensions		
Inside width of bed, inches (m)	47.4 (1.20)	60.9 (1.55)
Overall width, inches (m) (w/11.00x22.5 tires)	81.3 (2.07)	92.5 (2.35)
Inside bed depth, top of flare, inches (m)	22.6 (0.58)	22.6 (0.58)
Inside bed length, inches (m)	128.3 (3.26)	128.3 (3.26)
Overall length, inches (m)	196.4 (4.99)	196.4 (4.99)
Height to top of upper beater, inches (m)	63.8 (1.62)	63.8 (1.62)
Wheel tread, inches (m) (w/11.00 x 22.5 tires)	69.5 (1.77)	80.5 (20.5)
Tractor requirements+		
Power, minimum PTO horsepower (kW)	35 (26)	40 (30)
PTO speeds, RPM	540	540/1,000++
Number of apron speeds		
Mechanical drive	2 (plus 1 slow-speed option)	2 (plus 1 slow-speed option)
Hydraulic drive	NA	NA
Speeds		
Fast, fpm (mpm)	8 (2.44)	8 (2.44)
Slow, fpm (mpm)	4.5 (1.37)	4.5 (1.37)
Optional Slow, fpm (mpm)	2.24 (0.68)	2.24 (0.68)
Hydraulic, fpm (mpm)	NA	NA
Number of beater paddles	9	12
Weight		
Hubs only, pounds (kg)+	1,255 (556)	1,648 (749)
Apron chain availability		
T-Rod	Standard	Standard
Pintle	NA	Option
Pintle chain, single	D667-X Heavy Duty	D667-X Heavy Duty
Pintle chain, double	NA	NA
Hyd. drive orbit motor displ., in ³ /rev (cm ³)	NA	NA
Hyd. drive orbit motor flow limit, gpm (lpm)	NA	NA
Hyd. drive flow divider relief pressure, psi (bar)	NA	NA

An SMV sign is standard equipment and must be displayed according to the operation manual during road transport.

* Add 8.0 inches (200 mm), if 19L x 16.1 high-flotation tires are used.

** Add 10 inches (255mm) for 16.5 x 16.1 flotation tires.



New Holland box spreaders are designed to produce an even spread pattern and are built for years of dependable service.

New Holland box spreaders are the best-selling spreaders in the industry — and for good reason. Known as “Strong Boxes,” New Holland box spreaders are engineered to perform and built to last. They have the toughest floors and sides of any spreader available. And they’re made of special steels that are more corrosion-resistant and stronger than ordinary steels.

Every New Holland ‘strong box’ comes with Bonded Protection

Here’s something you won’t find with competitive models — a no-nonsense, no-hassle guarantee on the sides and floors. It’s standard on every New Holland box spreader. This special Bonded Protection plan guarantees the floors and sides of all New Holland box spreaders for 12 years. If the floor or sides of your New Holland box spreader fail within 12 years of original dealer purchase, we’ll provide new parts — FREE. No one else offers this type of protection.

Choose the capacity that’s right for your operation

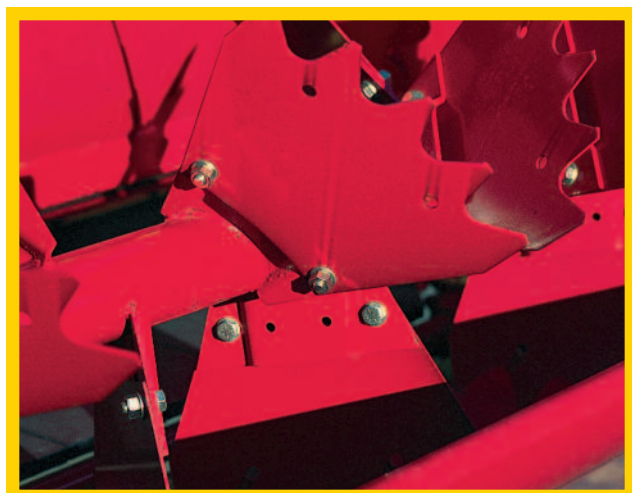
New Holland offers six models of box spreaders covering a wide range of capacities—from the Model 130, with its 161-cubic-foot capacity, all the way up to the massive Model 195, with its 440-cubic-foot capacity. All six models have extra steel frame members for added strength and lightweight, high-strength A-frame hitches for extra durability.

The Model 165 box spreader holds up to 263 bushels of material. Like all New Holland box spreaders, it comes with a 12-Year Bonded Protection plan for peace of mind and better resale value. A New Holland skid-steer loader makes material handling faster, cleaner, and easier.

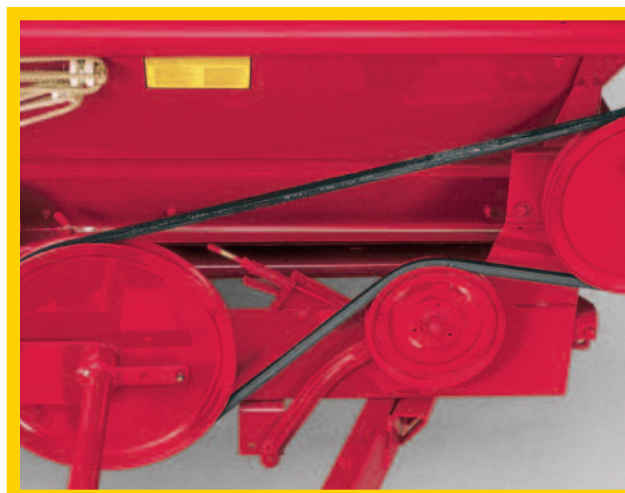
155	165	185	195
217 (6.14)	258 (7.31)	278 (7.87)	391 (11.07)
261 (7.39)	313 (8.86)	342 (9.68)	444 (12.57)
132 (3.74)	156 (4.42)	170 (4.81)	272 (7.70)
173 (4.90)	206 (5.83)	225 (6.37)	NA
210	252	275	357
10,000 (4536)	12,000 (5443)	13,000 (5897)	20,000 (9072)
60.9 (1.55)	60.9 (1.55)	60.9 (1.55)	72 (1.83)
92.5 (2.35)**	101 (2.56)*	97 (2.46)**	111 (2.81)**
22.6 (0.58)	22.6 (0.58)	22.6 (0.58)	32 (0.81)
154.3 (3.92)	176 (4.47)	192 (4.48)	192 (4.88)
224.4 (5.70)	251.8 (6.39)	268.1 (6.81)	308 (7.82)
63.8 (1.62)	62.8 (1.59)	62.8 (1.59)	69.8 (1.77)
80.5 (2.05)	86 (2.18)	82 (2.08)	98.8 (2.51)
50 (37)	55 (41)	60 (45)	100 (75)
540/1,000++	540/1,000++	540/1,000++	540/1,000++
2 (plus 1 slow-speed option) NA	2 (plus 1 slow-speed option) NA	2 (plus 1 slow-speed option) Infinite	2 (plus 1 slow-speed option) Infinite
8 (2.44)	8 (2.44)	8 (2.44)	8.5 (2.6)
4.5 (1.37)	4.5 (1.37)	4.5 (1.37)	4.6 (1.4)
2.24 (0.68)	2.24 (0.68)	2.24 (0.68)	3.0 (0.91)
NA	NA	1-13 (0.3-3.9)	1-13 (0.3-3.9)
12	12	12	12
1,902 (865)	2,300 (1.043)	2,670 (1,214)	3,920 (1,778)
Standard Option D667-X Heavy Duty NA NA NA NA	Standard Option D667-X Heavy Duty NA NA NA NA	Standard Option D667-X Heavy Duty NA 5.9 (96.7) 15 (57) 2000 (138)	NA Standard D667-K Extra HD D667-X Heavy Duty 5.9 (96.7) 15 (57) 2000 (138)

+ For level or gently rolling land, the tractor weight should be at least 50% of the gross spreader weight; for hilly land, high-speed road travel, or other adverse conditions, the tractor weight should be equal to the gross spreader weight.

++ Easily converted by changing belt sleeve and PTO yoke.



Up to 12 high-strength steel beaters minimize breakage. Bolt-on paddles provide a knife-like cutting and shredding action for a wide, fine spread pattern.



All models have a reliable straight-line V-belt drive that runs quietly and smoothly, eliminating the need for a slip clutch.



VALUE, SERVICE AND SOLUTIONS

There's a certain way of thinking that comes from living on a farm. Farming takes equal parts brain and brawn. Not to mention thick skin, calloused hands and a fair share of know how. Seasoned farmers know it helps to have equipment that's built by farmers, sold by farmers and used by farmers. You might call that instinct, but we call it FARM RAISED.

Support at every step. When you place your confidence in New Holland agricultural equipment, you get the finest in local support. Your New Holland dealer understands the many challenges you face and stands behind you at every step with the equipment, parts, service and financial solutions to make your job easier. Look to New Holland for a complete selection of equipment, including a full line of tractors, hay & forage equipment, harvesting, crop production and material handling equipment.

Quality parts and service. Turn to your New Holland dealer after the sale for expert, factory-trained service and genuine New Holland-branded parts. Your dealer has the very latest service updates and training to ensure your equipment keeps working productively season after season.

Financing solutions. Your New Holland dealer can tell you about smart ways to turn your financial challenges into opportunities with a portfolio of innovative financial services available through CNH Capital, including customized financing, leasing, insurance and the purchasing convenience of a Commercial Revolving Account.

For reliable equipment, parts and service — or just honest advice on farming and finance — turn to New Holland and your trusted New Holland dealer. We know. We're farmers, too.

NEW HOLLAND TOP SERVICESM

TOTAL SUPPORT, TIMELY INFORMATION FOR NEW HOLLAND CUSTOMERS.



TOP AVAILABILITY

Year-round support and information — just by calling one toll-free number.

TOP SPEED

Express parts delivery when and where you need it.

TOP PRIORITY

Fast-track solutions maximize your productivity — because your harvest can't wait.

TOP SATISFACTION

We drive and track the solution you need, keeping you informed — until you are back to work.

TOP SERVICE IS MANAGED IN CLOSE PARTNERSHIP WITH NEW HOLLAND DEALERS AND SERVICE TEAMS.



We are proud to support the FFA.

Learn more at www.newholland.com/na

Design, materials and/or specifications are subject to change without notice and without liability therefor. Specifications are applicable to units sold in Canada, the United States, its territories and possessions, and may vary outside these areas.

© 2011 CNH America LLC. All rights reserved. New Holland and CNH Capital are registered trademarks of CNH America LLC. Any trademarks referred to herein, in association with goods and/or services of companies other than CNH America LLC, are the property of those respective companies.



Safety begins with a thorough understanding of the equipment. Always make sure you and your operators read the Operator's Manual before using the equipment. Pay close attention to all safety and operating decals and never operate machinery without all shields, protective devices and structures in place.