

EPSON
EXCEED YOUR VISION

STYLUS™ PRO 4800 / 7800 / 9800


LARGE
FORMAT
PRINTERS



A New Standard of Excellence in Colour and Black-and-White Printing

Epson takes digital printing to even higher levels with these latest printers, which will satisfy the most demanding professional in the fields of photography, graphic design, pre-press and fine art print making.





Large format printing with prints of such superb quality, they are more than suitable for gallery and museum display

This is the Epson STYLUS™ PRO 800 Series with Epson UltraChrome™ K3 Ink; it's the new standard of excellence in colour and black-and-white printing.

In the world of professional and commercial printing, excellence can be the only acceptable standard. With the introduction of three new printers – the Epson STYLUS PRO 9800, 7800 and 4800 – that standard for printing proofs, fine art and photography has arrived.

The Epson STYLUS™ PRO 800 Series Printers

Consisting of three models, each taking full advantage of the next generation pigment ink technology – Epson UltraChrome K3 Ink, the Epson STYLUS PRO 800 Series, is a comprehensive 8-colour offering that covers the entire range of professional printing needs.



Epson STYLUS™ PRO 9800

Designed for the high-end professional graphics and photo markets where quality, speed and economy are essential, the Epson STYLUS PRO 9800 generates outstanding prints at sizes up to 44-inches (1,118mm) wide.

Available Spring 2005



Epson STYLUS™ PRO 7800

Still with the quality, speed and economy of the Epson STYLUS PRO 9800, the floor-standing Epson STYLUS PRO 7800 is the perfect printer for environments where print widths of up to 24-inches (610mm) are needed.

Available Spring 2005



Epson STYLUS™ PRO 4800

Delivering all the quality and benefits of the Epson STYLUS PRO 9800 and 7800 models, the compact Epson STYLUS PRO 4800, with its ability to accept paper widths of up to 17-inches (432mm) is designed to be a perfect fit in nearly all production environments.

Available now

The Epson UltraChrome™ K3 Ink Technology

In building on the successes and advances of Epson UltraChrome Ink, the Epson UltraChrome K3 Ink Set is without rival. Featuring a set of three shades of black ink – hence the K3 denominator – UltraChrome K3 colour and black and white prints display a high level of quality not previously seen from an inkjet printer.

Epson UltraChrome™ K3 Ink Overview

Epson UltraChrome Ink has established itself as the standard among professionals and high-end users who desire high quality and durability. Epson UltraChrome K3 is an improved version of this ink and was developed based on feedback from our customers.

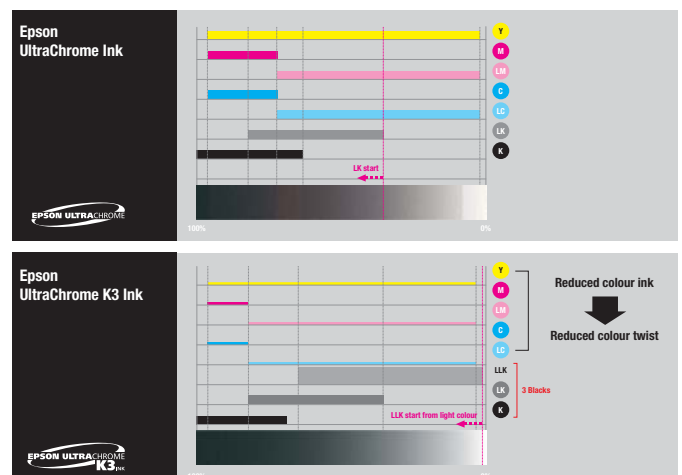
Its new pigment and resin improves glossiness and D-max readings on glossy media and exhibit reduced metamerism (i.e. colour inconsistency under different light sources). Additionally, three levels of black ink dramatically improve grey balance, (which is the axis of colour imaging), and produce superior black and white and colour prints.

All new 8 colour pigment ink



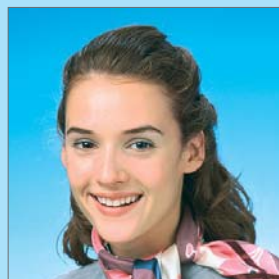
Improved Grey Balance

Compared to Epson UltraChrome ink, new Epson UltraChrome K3 ink dramatically reduces colour twists in grey areas thanks to decreased colour ink consumption. This reduction greatly improves colour accuracy for both colour and black and white printing.

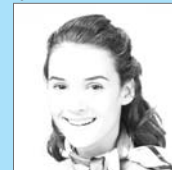


Accurate Colour Control

Epson UltraChrome K3 ink uses three blacks to achieve a more stable and accurate grey balance while also allowing for more accurate colour control due to the smaller quantity of colour ink used. Professional users will appreciate this high degree of colour accuracy when printing proofs, photographs and limited edition fine art prints.



Epson UltraChrome ink



Using Black and Light Black



Using colour ink

Epson UltraChrome K3 ink



Using Black, Light Black and Light Light Black



Using colour ink

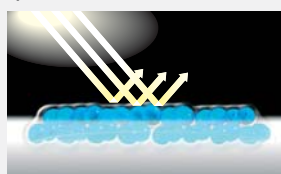
ULTRACHROME K3



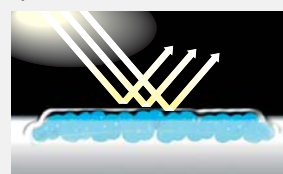
Highly Improved Print Gloss Levels

New resin chemistry smoothes the surface of the paper when ink is applied and thereby dramatically improves print gloss levels.

Epson UltraChrome Ink

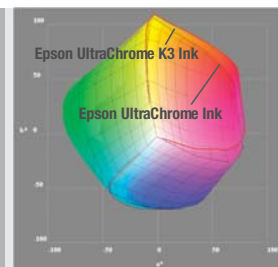
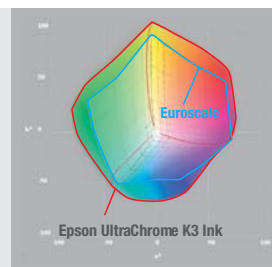


Epson UltraChrome K3 Ink



Wider Gamut

Thanks to Epson's high density UltraChrome™ K3 pigment ink, colour prints exhibit a brilliance and depth superior to that of colour offset printing and silver halide photography. The wide colour gamut produced by Epson UltraChrome K3 ink surpasses that of the Euroscale gamut and the yellow, green and red areas of Epson UltraChrome Ink.



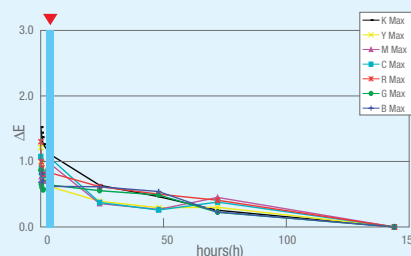
Dramatically Reduced Metamerism

The characteristics of pigment ink and reduced colour ink consumption minimise the effect created when objects having different spectral distributions look alike under one light source, but appear different when viewed under another. This results in more consistent looking prints, even when viewed under different light sources.

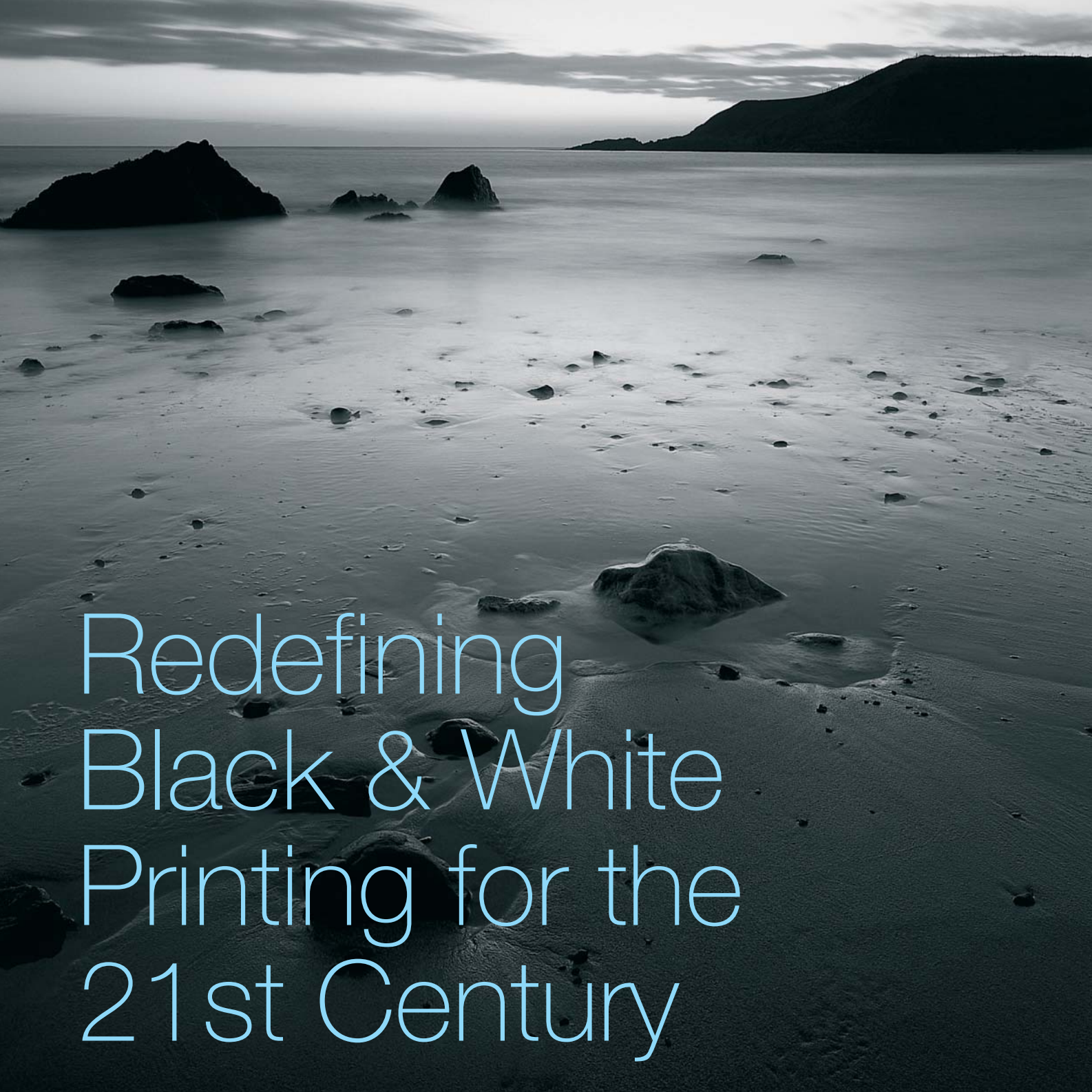
Excellent Colour Stability Making it Ideal for Contract Proofing

When Epson UltraChrome K3 Ink comes into contact with the substrate, the ink quickly separates from the pigment particles which are absorbed deep into the media. As a result, colours become resistant to change and stabilise quickly. Superior short-term colour stability allows for high-precision contract proofing and speeding-up of operations.

Epson UltraChrome K3 Ink
(Epson Proofing Paper Semimatte)



Time to create an ICC profile is just 30 min. after print.



Redefining Black & White Printing for the 21st Century

New Epson UltraChrome™ K3 ink produces black and white photographs that you never thought possible from a colour printer. Skin tones come alive as never before and shadows reveal subtleties that were previously lost on other printers.

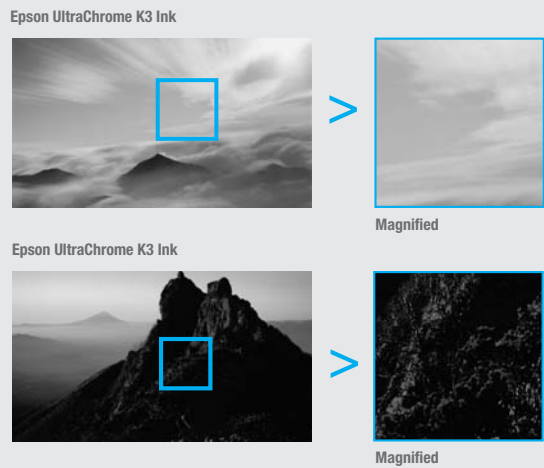
Three-level Black Ink Technology

Over the years, the majority of silver halide photographs have been in colour. Despite this, many professional photographers choose black and white photography due to the simple and direct expression of the medium, in addition to the power that black and white photographs possess.

Until now, it has been technically very difficult for black and white photographers to use digital photography because of colour twists and short tonal gradation inherent in digital printers. Epson's new UltraChrome™ K3 ink substantially reduces these problems, allowing black and white photographers to fully express themselves using digital cameras and printers with quality rivaling that of silver-halide processes.

Smooth Gradation in Highlights and Shadows

Epson UltraChrome K3 ink produces smoother gradation in highlights thanks to the addition of the new Light Light Black Ink. Shadow areas also reveal more detail and produce denser blacks.



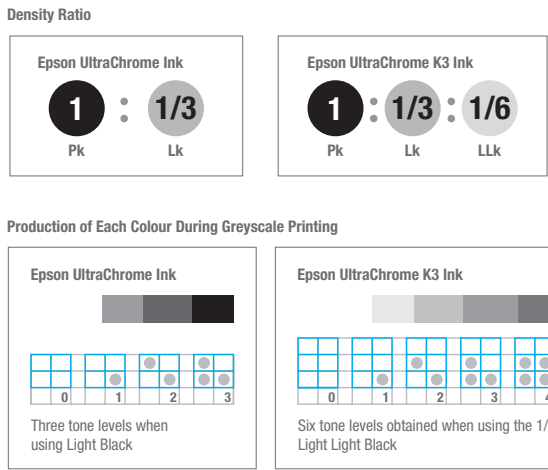
Colour Toning

The three black inks and low saturation inks (such as light cyan and light magenta) allow for subtle colour tonings. Demanding professional photographers will appreciate this feature for producing various types of monochrome images.



Smooth Tonal Gradation

The three different density blacks found in Epson UltraChrome K3 produce smooth gradation and substantially reduces colour twist. The illustration below shows the smooth tonal scale that is produced using Light Light Black Ink.



Higher D-max with Glossy Media

The Photo Black ink in the Epson UltraChrome K3 ink set has been improved, resulting in a higher D-max. This is very useful for reproducing jet black areas. The end result are prints containing a depth and richness never before experienced with a digital colour printer.

	Epson UltraChrome Ink	Epson UltraChrome K3 Ink
D-max	2.1	2.3

* Based on estimates from Epson. Results may change when tested in different environments and using different measuring equipment.



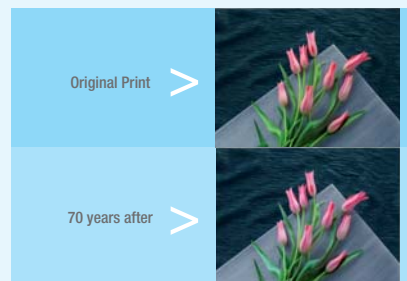
Durability with Epson Media and Epson UltraChrome™ K3 Ink

The combination of the Epson STYLUS™ PRO 800 Series printers, Epson UltraChrome K3 Ink and Genuine Epson media delivers benefits that apply to any professional or commercial printing environment. The extensive design stages of all three key elements have focused on achieving perfect results from this unique combination. These results include:

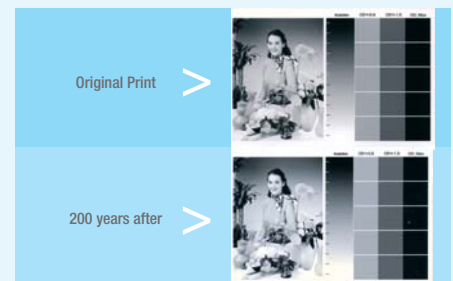
- > Lightfastness ratings of up to 75 years* for colour and up to 200 years* for black-and-white prints
- > Excellent water resistance
- > Improved scratch resistance
- > Perfect media-to-application matching for black-and-white photography, colour photography, creative and fine-art photography, commercial proofing and graphic design.

Epson UltraChrome K3 Ink

Epson Premium Glossy Photo Paper



Epson UltraChrome K3 Ink



* See specifications page for lightfastness test conditions.

Lightfastness Table

MEDIA TYPE	DISPLAY LIFE (Colour Print)	DISPLAY LIFE (Black & White Print)
Premium Glossy Photo Paper 250 (Roll Paper)	Up To 70 years	Up To 150 years
Premium Glossy Photo Paper (Cut Sheet)	Up To 45 years	Up To 150 years
Premium Luster Photo Paper (Roll Paper)	Up To 25 years	Up To 150 years
Premium Luster Photo Paper (Cut Sheet)	Up To 45 years	Up To 150 years
Enhanced Matte Paper	Up To 75 years	Up To 200 years
Archival Matte Paper	Up To 75 years	Up To 200 years
UltraSmooth Fine Art Paper	Up To 60 years	Up To 200 years
Velvet Fine Art Paper	Up To 45 years	Up To 200 years

Note: For additional lightfastness data and test criteria, please refer to www.wilhem-research.com

The Ink Cartridge Component

In designing the Epson STYLUS™ PRO 800 Series, Epson engineers incorporated:

- > A more streamlined casing design to reduce space requirements
- > Support for large, unattended printing
- > A multiple inkset configurations for specific print job requirements

Recessed and Newly Designed Ink Cartridges

With the introduction of recessed ink cartridge bays, the Epson STYLUS PRO 9800 and 7800 have cleaner and more compact designs and are even more suitable for production environments where space is at a premium. One of the ways in which this is achieved was by redesigning the printer's 110ml (standard) and 220ml (optional) ink cartridges, delivering a smaller casing without impacting on cartridge ink capacity.

High Capacity Ink Cartridges

All three printers in the Epson STYLUS PRO 800 Series allow the option of utilising 220ml ink cartridges, which are ideal in environments where large and/or unattended printing is a matter of course. Even in less print-intensive environments, the optional 220ml ink cartridges contribute to an overall reduction in maintenance requirements.

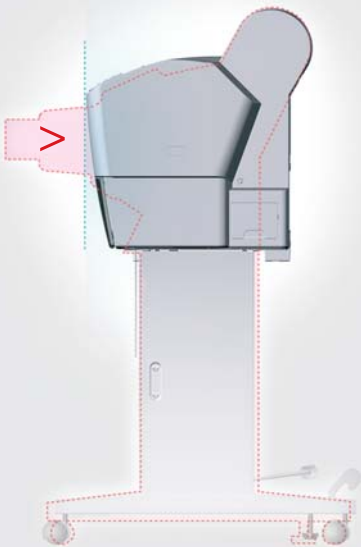
Multiple Ink Cartridge Sets

With the ability to choose between multiple ink cartridge sets with the Epson STYLUS PRO 800 Series, there is the flexibility to exploit the full range of Genuine Epson print media for every print. With the Photo Black ink cartridge set for photographic media and Matte Black for fine art, matte and plain paper, the perfect print can be achieved right across the comprehensive range of Genuine Epson papers.

Multiple Ink Cartridge Sets

Media Type	Alternative Ink	Common Ink							
When using gloss media	PK	LK	LLK	C	LC	M	LM	Y	
When using fine art, matte, or plain paper	MK	LK	LLK	C	LC	M	LM	Y	

Recessed and Newly Designed Ink Cartridges



Superb Quality – Excellence with Every Print

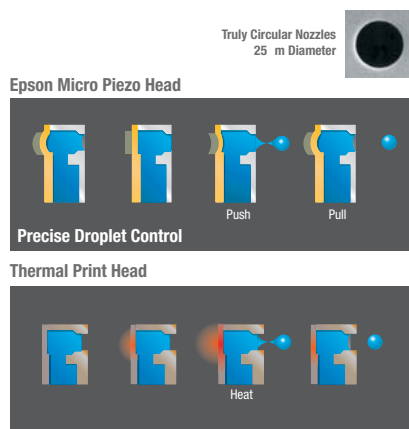
Epson's commitment to superb print quality is underpinned by advanced technologies that have been a hallmark of Epson's global leadership in professional colour and black-and-white printing. These are technologies that ensure every print benefits from:

- > Incredibly accurate ink droplet placement
- > Precise control over variable sizing of ink droplets
- > Accurate colour matching across multiple printers of the same model

Accurate Ink Placement

One of the key factors in achieving absolute clarity in prints is precision in the ink droplet formation process. By utilising Micro Piezo™ technology, as opposed to a thermal or “bubble” system, the Micro Piezo print head is capable of controlling the curvature (meniscus) of the upper surface of the ink column at the print head nozzles. This Advanced Meniscus Control (AMC) technology enables the Epson STYLUS™ PRO 800 Series printers to deliver sharp, accurately placed spherical ink droplets on the print media.

With accurate ink placement comes the ability to create prints that exhibit detail so fine that it exceeds the quality delivered by more expensive printing devices.



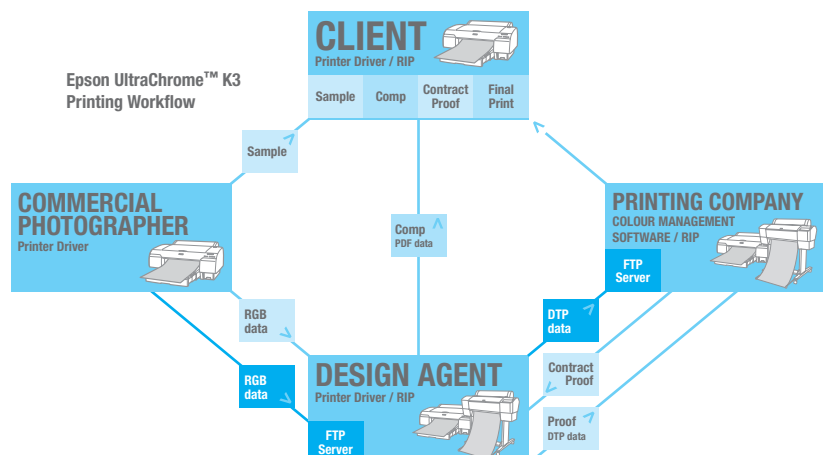
Precise Ink Droplet Sizing

For each of the resolution settings that can be made with the Epson STYLUS PRO 800 Series printers, the Micro Piezo print head utilises a specific set of three different size droplets – any combination of which can be produced in one pass of the print head and through each of the 180 x 8 print nozzles. At high resolutions, these ink droplets can be as small as 3.5 picolitres – four times smaller than the diameter of a human hair. This precision control over ink droplet size is achieved by means of Epson's Variable Sized Droplet Technology (VSDT), which is instrumental in delivering true 2880dpi resolution.

The advantages in professional printing of VSDT are increased print speed by using larger droplet sizes for image areas of the same colour; and, in conjunction with the Epson AMC technology, superb detail with accurately placed smaller droplets.

Accurate Colour Matching

In production environments where several printers of the same model are being used, colour consistency between prints is essential. In a change to the production process, Epson introduced colorimetric calibration of each printer, checking and correcting its calibration using precision spectrophotometers. As a result, colour proofs, from different printers of the same model remain consistent between one another.



When Speed Matters

Speed and quality – two benchmarks of the Epson STYLUS™ PRO 800 Series' performance. Exploiting the full potential of proven and further refined Epson inkjet technologies, the new Epson STYLUS PRO 800 Series printers deliver outstanding throughput rates for even the most demanding of print environments.

High-Speed Data Throughput

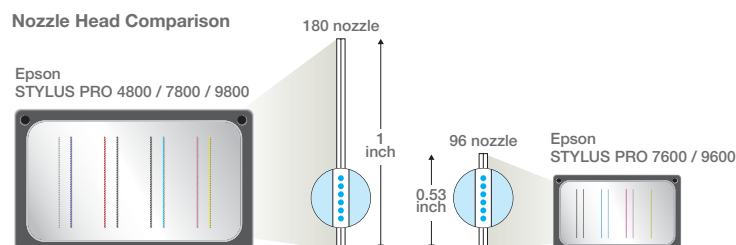
Through major improvements to the hardware, software and firmware responsible for processing print image data, the Epson STYLUS PRO 800 Series exhibits significantly faster print times than previous models. In some cases, even with high quality photo printing, print times have been reduced by almost 50 per cent. For many production environments where print time is a valuable commodity, this dramatic reduction delivers substantial time savings and greater revenue opportunities.

Print Speed Table

PRINT MODE	PRINT SIZE: A2		PRINT SIZE: A1		PRINT SIZE: B0+	
	PRO 4000	PRO 4800	PRO 7600	PRO 7800	PRO 9600	PRO 9800
Fast (720 x 360dpi)	3.1'	2.3'	7.5'	4.2'	22.5'	10.9'
Quality (720 x 720dpi)	5.6'	5.5'	13'	9.9'	41'	29.0'
Photo (1440 x 720dpi)	8.5'	7.9'	25'	14.3'	79'	42.5'

Wider Print Head

Adding significantly to the Epson STYLUS PRO 800 Series' high speed capabilities is a one-inch wide print head with a horizontal by vertical configuration of 180 x 8 ink nozzles. In stark comparison to earlier models – with only 96 nozzles per colour – the new print head has the ability to cover a greater printable area for each pass which dramatically improves print speeds.



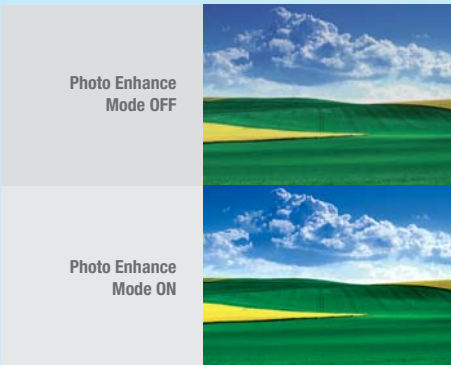
Advanced New Printer Driver and Colour Calibration Software

Total Colour Control

With a series of built-in colour management tools, a new advanced printer driver and colour calibration software, the Epson STYLUS™ PRO 800 Series printers provide total colour control.

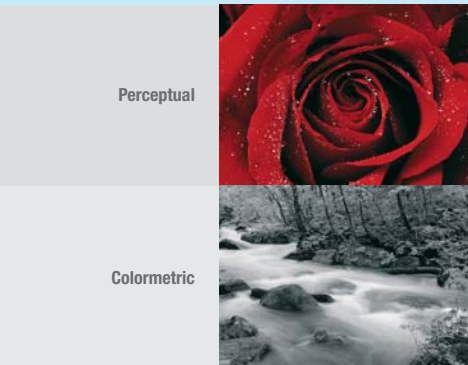
Photo Enhance

The Photo Enhance workflow distinguishes between landscapes and portraits. It automatically makes adjustments for landscape photographs, with sharper and more brilliant colours; and portraits that exhibit smoother, brighter skin tones.



No Colour Adjustment (Enhanced ICC Profile)

Affording the best possible match between the printer's output and application software that supports colour management.



Adobe® RGB

Easily selectable through the printer driver, the Adobe® RGB mode allows advanced digital still camera users who photograph in the Adobe® RGB colour space to print photos using that space.



Three ICM / Colour Sync Modes

For simplified colour management, the new printer driver offers three ICM modes: Standard (for setting both input and output objects) Driver (for individual settings for each object, such as photos, graphics and text) and Host (allowing the image-embedded profile to be used).

Advanced Black-and-White Mode

Accessible via the printer driver, the new Advanced Black-and-White mode provides users with a variety of print imaging functions to take full advantage of the UltraChrome™ K3 Ink set. With the ability to control brightness, contrast, highlight point shift, maximum optical density, shadow tonality and highlight tonality, users can achieve the best possible black-and-white prints.

To achieve black-and-white prints, image data is converted automatically to greyscale, which eliminates colour twists and improves gradation, even if colour toning is applied.

Epson Color Base – Colour Calibration Software

For demanding applications that require precise colour matching, Epson Color Base software can be used to transfer controlled colour measurements directly to the printer or RIP software. This data is then used to assure absolute colour accuracy within the limitations of the printing system, ensuring absolute ease to achieve consistent results.



Epson Printer Driver

Powerful Media Handling Versatility

The comprehensive range of Genuine Epson print media is a powerful adjunct to the new Epson STYLUS™ PRO 800 Series printers. Combined with totally flexible media handling capabilities, these printers set new standards in printer versatility.

Epson STYLUS™ PRO 9800

- > Roll paper feeder – for continuous printing up to 1,118mm wide
- > Auto cutter – for automatic cutting of roll paper at user-configured settings
- > Manual cutter (optional) – for cutting thick media
- > Auto take up reel unit (Optional) – for winding up output with printed side either out or in
- > Two and three-inch roll feed spindle – a single spindle for paper cores of both sizes
- > High tension two and three-inch spindle (optional) – for even greater paper handling precision
- > Manual feed slot – for rear-loading of media up to 1.5mm thick
- > Paper scale – for easy and precise alignment of roll paper

Epson STYLUS™ PRO 7800

- > Roll paper feeder – for continuous printing up to 610mm wide
- > Auto cutter – for automatic cutting of roll paper at user-configured settings
- > Manual cutter (optional) – for cutting thick media
- > Two and three-inch roll feed spindle – a single spindle for paper cores of both sizes
- > High tension two and three-inch spindle (optional) – for even greater paper handling precision
- > Manual feed slot – for rear-loading of media up to 1.5mm thick
- > Paper scale – for easy and precise alignment of roll paper

Epson STYLUS™ PRO 4800

- > Roll paper feeder – for continuous printing up to 432mm wide
- > Auto cut-sheet feeder – for automatic feeding of cut sheets up to A2 wide
- > Auto cutter – for automatic cutting of roll paper at user-configured settings
- > Two and three-inch roll feed spindle – a single spindle for paper cores of both sizes
- > Optional high tension two and three-inch spindle – for even greater paper handling precision
- > Front manual feeder – supporting front-loading of media up to 1.5mm thick
- > Top rear manual feeder – supporting top loading of media up to 0.7mm thick
- > Paper scale – for easy alignment of cut sheets and roll paper

True BorderFree™ Printing

The Epson STYLUS PRO 800 Series printers deliver True BorderFree printing[#]. This innovative feature supports various media widths and saves on valuable post-production time by printing without margins. Finish print jobs more accurately and safely than manual finishing techniques by letting the printer do it for you.

[#] See specifications page for sizes

Versatile Connectivity

Bringing the power of the Epson STYLUS PRO 800 Series to a range of environments is achieved by built-in interfaces and support for a variety of Windows® and Macintosh® operating systems. Along with the standard high-speed USB 2.0 (compatible with USB 1.1) and FireWire IEEE 1394 interfaces, this series of advanced printers feature an optional high speed Type B Ethernet card (10/100 BaseTx).

Easy Integration into Digital Printing Workflows

The Epson STYLUS PRO 800 Series printers are fully supported by a wide range of third-party and Epson-branded RIP software, providing complete control over the final printed output and seamless integration into existing digital printing workflows. Leading CTP manufacturers also support these new printers, making them ideal for computer-to-plate applications.

Product Description	Paper Type	Size	Code	Basis (weight g/m ²)	Thickness	Brightness	Opacity
Gloss Paper (Photo Black Ink is recommended for these media)							
Premium Glossy Photo Paper (250)	Roll	16" x 30.5m 24" x 30.5m 36" x 30.5m 44" x 30.5m	C13S041742 C13S041638 C13S041639 C13S041640	260	0.27mm	92%	96%
Premium Glossy Photo Paper	Cut Sheet	A4 (20 Sheets) A3 (20 Sheets) A3+ (20 Sheets)	C13S041285 C13S041288 C13S041289	255	0.27mm	97%	96%
Photo Grade Glossy Paper	Roll	420mm x 30.5m 24" x 30.5m 36" x 30.5m 44" x 30.5m	C13S041778 C13S041475 C13S041476 C13S041477	160	0.17mm	93%	91%
Photo Paper Gloss (250)	Roll	17" x 30.5m 24" x 30.5m 44" x 30m	C13S041892 C13S041893 C13S041895	250	0.25mm	92%	94%
Premium Semigloss Photo Paper (250)	Roll	16" x 30.5m 24" x 30.5m 36" x 30.5m 44" x 30.5m	C13S041743 C13S041641 C13S041642 C13S041643	255	0.27mm	92%	96%
Premium Semigloss Photo Paper	Roll	24" x 30.5m 36" x 30.5m 44" x 30.5m	C13S041393 C13S041394 C13S041395	162	0.18mm	94%	90%
	Cut Sheet	A4 (20 Sheets) A3 (20 Sheets) A3+ (20 Sheets)	C13S041332 C13S041334 C13S041328	251	0.27mm	93%	97%
Photo Grade Semigloss Paper	Roll	420mm x 30.5m 24" x 30.5m 36" x 30.5m 44" x 30.5m	C13S041779 C13S041478 C13S041479 C13S041480	172	0.18mm	93%	92%
Premium Semimatte Photo Paper (250)	Roll	16" x 30.5m 24" x 30.5m 36" x 30.5m 44" x 30.5m	C13S041738 C13S041655 C13S041656 C13S041657	235	0.25mm	95%	96%
Epson Proofing Paper Semimatte	Roll	13" x 15.2m 17" x 30.5m 24" x 30.5m 36" x 30.5m 44" x 30.5m	C13S041668 C13S041724 C13S041658 C13S041659 C13S041660	155	0.16mm	88%	91%
	Cut Sheet	A3+ (100 Sheets)	C13S041744	180	0.19mm	88%	93%
Premium Luster Photo Paper (250)	Roll	300mm x 30.5m 16" x 30.5m 20" x 30.5m 24" x 30.5m 36" x 30.5m 44" x 30.5m	C13S041646 C13S041737 C13S041647 C13S041461 C13S041462 C13S041463	235	0.26mm	98%	96%
	Cut Sheet	17" x 22" (25 Sheets)	C13S041828				
Matte Paper (Matte Black Ink is recommended for these media)							
Singleweight Matte Paper	Roll	17" x 40m 24" x 40m 36" x 40m	C13S041746 C13S041853 C13S041854	115	0.14mm	89%	95%
	Cut Sheet	A3+ (100 Sheets) A2 (100 Sheets)	C13S041909 C13S041910	115		92%	90%
Doubleweight Matte Paper	Roll	24" x 25m 36" x 25m 44" x 25m	C13S041385 C13S041386 C13S041387	180	0.21mm	84%	94%
Enhanced Matte Paper	Roll	17" x 30.5m 24" x 30.5m 36" x 30.5m 44" x 30.5m	C13S041725 C13S041595 C13S041596 C13S041597	189	0.25mm	100%	96%
	Cut Sheet	17" x 22" (50 Sheets)	C13S041908	192	0.25mm	100%	96%
Archival Matte Paper	Cut Sheet	A4 (50 Sheets) A3 (50 Sheets) A3+ (50 Sheets)	C13S041342 C13S041344 C13S041340	189	0.25mm	100%	96%
Velvet Fine Art Paper	Cut Sheet	A3+ (20 Sheets)	C13S041637	260	0.48mm	94%	97%
UltraSmooth Fine Art Paper	Roll	24" x 15.2m 44" x 15.2m	C13S041702 C13S041703	250	0.32mm	94%	98%
	Cut Sheet	A3+ (25 Sheets) 17" x 22" (25 Sheets)	C13S041897 C13S041896	325	0.46mm	94%	97%
Textured Fine Art Paper	Roll	17" x 15.2m 24" x 15.2m 36" x 15.2m 44" x 15.2m	C13S041745 C13S041447 C13S041448 C13S041449	225	0.37mm	80%	90%
Watercolor Paper-Radiant white	Roll	24" x 18m 36" x 18m 44" x 18m	C13S041396 C13S041397 C13S041398	190	0.29mm	90%	94%
	Cut Sheet	A3+ (20 Sheets)	C13S041352				
Specialty Media							
Canvas	Roll	24" x 12.2m 44" x 12.2m	C13S041531 C13S041533	390	0.46mm	86%	97%
Enhanced Synthetic Paper	Roll	24" x 40m 36" x 40m 44" x 40m	C13S041614 C13S041615 C13S041616	84	0.12mm	98%	94%
Enhanced Adhesive Synthetic Paper	Roll	24" x 30.5m 36" x 30.5m 44" x 30.5m	C13S041617 C13S041618 C13S041619	135	0.17mm	98%	100%

Optional Items

	Item	Code	EPSON STYLUS™ PRO 4800	EPSON STYLUS™ PRO 7800	EPSON STYLUS™ PRO 9800
Spindle	2/3 inch Dual Roll Feed Spindle	C12C811151			•
	2/3 inch Dual Roll Feed Spindle (High Tension)	C12C811152			•
	2/3 inch Dual Roll Feed Spindle	C12C811161		•	
	2/3 inch Dual Roll Feed Spindle (High Tension)	C12C811155		•	
	2/3 inch Dual Roll Feed Spindle	C12C811171	•		
	2/3 inch Dual Roll Feed Spindle (High Tension)	C12C811191	•		
Auto Take Up Reel	Take Up Reel Core	C12C815121			•
	Auto Take Up Reel Unit	C12C815251			•
Cutter Unit	Manual Cutter Unit	C12C815182			•
	Manual Cutter Unit	C12C815231		•	
Cutter Spare Blade	Manual Cutter Spare Blade	C12C815192		•	
	Auto Cutter Spare Blade	C12C815291	•	•	•
Others	Roll Paper Belt	C12C890121	•	•	•
	Borderless Print Spacer for 420mm and 8 inch Roll Paper	C12C811201	•		
	EpsonNet 10/100 Base Tx High Speed Int. Print Server	C12C824053	•		
	Maintenance Tank	C12C890191	•	•	•
	EpsonNet 10/100 Base Tx High Speed Int. Print Server5	C12C824342	•	•	•
	Printer Cabinet	7100321	•		
Utility Software	Epson PageProofer for Windows®	310026	•	•	•
	Epson CopyFactory for Windows®	310027	•	•	•

Ink Cartridges

8-Colour Model

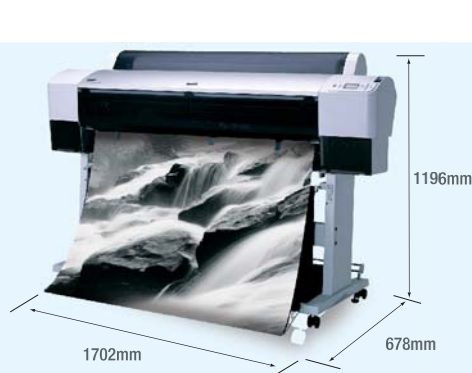
EPSON STYLUS™ PRO 4800

EPSON STYLUS™ PRO 7800/9800

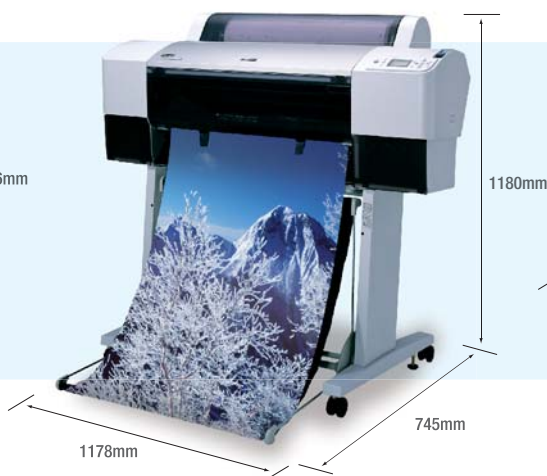
	110ml	220ml	110ml	220ml
Matte Black	C13T543800	C13T544800	C13T566800	C13T567800
Photo Black	C13T564100	C13T565100	C13T562100	C13T563100
Light Black	C13T564700	C13T565700	C13T562700	C13T563700
Light Light Black	C13T564900	C13T565900	C13T562900	C13T563900
Cyan	C13T564200	C13T565200	C13T562200	C13T563200
Magenta	C13T564300	C13T565300	C13T562300	C13T563300
Yellow	C13T564400	C13T565400	C13T562400	C13T563400
Light Cyan	C13T564500	C13T565500	C13T562500	C13T563500
Light Magenta	C13T564600	C13T565600	C13T562600	C13T563600

Dimensions

Epson STYLUS™ PRO 9800



Epson STYLUS™ PRO 7800



Epson STYLUS™ PRO 4800



Specifications

EPSON AUSTRALIA
CUSTOMER SERVICE LINE
Tel: 1300 131 928

VISIT OUR WEBSITE:
www.epson.com.au

HEAD OFFICE
SYDNEY
3 Talavera Road
North Ryde, NSW 2113
Tel: (02) 8899 3666

MELBOURNE
1155 Malvern Road
Malvern, VIC 3144
Tel: (03) 8823 9200

ABN 91 002 625 783
06/05

WARRANTY
1 year On-Site (Capital Cities)

EPSON STYLUS PRO 4800		
SIZE	17 inch wide (A2+)	
INK MODE	8 colour	
RESOLUTION	2880dpi x 1440dpi Epson Variable-sized Droplet Technology	
INK SYSTEM	9-Colours pigment ink (C, M, Y, LC, LM, LK, LLK, Photo K, Matte K) with 8 slots) only one of Matte K and Photo K could be used for print. Ink conversion cartridges are required for ink change between Matte K and Photo K Individual high capacity ink cartridge Ink Capacity 110ml or 220ml (Different ink as Pro 4000 / 7600 / 9600)	
PRINTER SPEED	A2 size, Colour 360dpi x 360dpi : Approx. 1.3 minutes (Plain Paper : Draft Mode) 360dpi x 360dpi : Approx. 2.3 minutes (Plain Paper : Fast Mode) 720dpi x 360dpi : Approx. 2.7 minutes (Plain Paper : Quality Mode) 720dpi x 360dpi : Approx. 2.3 minutes (Coated Media : Fast Mode) 720dpi x 720dpi : Approx. 5.5 minutes (Coated Media : Quality Mode) 1440dpi x 720dpi : Approx. 7.9 minutes (Photo Mode) *8.7 minutes in case of the Advanced B&W Photo Mode 2880dpi x 1440dpi : Approx. 14.9 minutes (Super Photo Mode)	
PRINTER DRIVER	Windows® 2000 / XP, Mac® OS X, OS 9	
HEAD CONFIGURATION	180 nozzles x 8 with VSDT	
PAPER INPUT CAPABILITY		
ROLL MEDIA	Single roll Media width Minimum media length Media thickness High capacity paper tray with automatic sheet feed (up to 250pcs of Plain Paper) Manual insertion feeder for media up to 1.5mm Media width Media length Media thickness	1 roll < 150mm / Outside diameter 203.2mm – 431.8mm (8" – 17") 279mm 0.08mm – 0.50mm size A4 / LTR – A2 / C, (210mm – 431.8mm) 279mm – 610mm 0.08mm – 1.50mm
CUT SHEET		
PAPER OUTPUT CAPABILITY	Single roll system, Auto media cutter	
MEDIA DIMENSION		
ROLL	Width 203.2mm – 432mm (8" – 17"), A4 – A2+	
PRINTING AREA (WIDTH)	Max. 432mm (BorderFree Printing width: 8" (*1), 10", 12", 14", 16", 17", 210mm, 257mm, 297mm, 300mm, 329mm, 400mm, 420mm (*1)) *1: 8" and 420mm requires spacer	
PRINT MARGINS		
ROLL MEDIA	4 modes available: mode 1: 3mm on all edges (top, sides, bottom) mode 2: 15mm (top and bottom), 3mm (sides) mode 3: 15mm (top, sides, bottom) mode 4: 25mm (top and bottom) 3mm (side)	
SHEET MEDIA	2 modes available: mode 1: 3mm (top, sides, bottom) mode 2: 3mm (top and sides) 14mm (bottom)	
TOTAL PRINT VOLUME	20,000 A2 sheets	
CONSUMABLE PARTS	Cutter blade, maintenance tank	
MAINTENANCE PARTS	Pump unit, flushing box, head cleaner, cap assembly	
RELIABILITY		
CUTTER BLADE	Coat paper, approx. 2,000 cuts Film, approx. 1,000 cuts	
CARRIAGE MOTOR	Approx. 20,000 A2 sheets	
ROLL DIMENSIONS	Core diameter 2" or 3", Max. Outside Diameter ø150mm	
MEMORY	64MB	
LANGUAGES	ESC / P2 Raster	
INTERFACES (STANDARD)	USB 2.0 (Compatible with 1.1), IEEE 1394 Optional: Type B I/F (Ethernet)	
VOLTAGE / CURRENT / FREQUENCY	100 – 120V version, 220 – 240V version	
POWER CONSUMPTION		
PRINTING	59W or less	
STANDBY	5W or less	
POWER OFF	1W or less	
DIMENSIONS	848mm(W) x 765mm(D) x 354mm(H) (Paper Tray Storage Min. Size) 848mm(W) x 1105mm(D) x 354mm(H) (Paper Tray Expand Max. Size)	
WEIGHT	Approx. 39.4kg (excluding Ink and Media)	
UTILITY SOFTWARE		
STANDARD	Epson LFP Remote Panel, Epson ColorBase	
OPTIONAL	Epson PageProofer, Epson CopyFactory, Epson Stylus RIP V3	

EPSON STYLUS PRO 7800		
SIZE	24 inch wide (A1+)	
INK MODE	8 colour	
RESOLUTION	2880dpi x 1440dpi Epson Variable-sized Droplet Technology	
INK SYSTEM	9-Colours pigment ink (C, M, Y, LC, LM, LK, LLK, Photo K, Matte K) with 8 slots) only one of Matte K and Photo K could be used for print. Ink conversion cartridges are required for ink change between Matte K and Photo K Individual high capacity ink cartridge Ink Capacity 110ml or 220ml (Different ink as Pro 4000 / 7600 / 9600)	
PRINTER SPEED	A1 size, Colour 360dpi x 360dpi : Approx. 2.2 minutes (Plain Paper : Draft Mode) 360dpi x 360dpi : Approx. 4.2 minutes (Plain Paper : Fast Mode) 720dpi x 360dpi : Approx. 5.0 minutes (Plain Paper : Quality Mode) 720dpi x 360dpi : Approx. 4.2 minutes (Coated Media : Fast Mode) 720dpi x 720dpi : Approx. 9.9 minutes (Coated Media : Quality Mode) 1440dpi x 720dpi : Approx. 14.3 minutes (Photo Mode) *15.8 minutes in case of the Advanced B&W Photo Mode 2880dpi x 1440dpi : Approx. 26.9 minutes (Super Photo Mode)	
PRINTER DRIVER	Windows® 2000 / XP, Mac® OS X, OS 9	
HEAD CONFIGURATION	180 nozzles x 8 with VSDT	
PAPER INPUT CAPABILITY		
ROLL MEDIA	Single roll Media width Minimum media length Media thickness Manual insertion feeder for media up to 1.5mm Media width Media thickness	1 roll < 150mm / Outside diameter 203.2mm – 610mm (8" – 17") 279mm 0.08mm – 0.50mm size A4 / LTR – A1+ / 24" (210mm – 610mm) 0.08mm – 1.50mm
CUT SHEET		
PAPER OUTPUT CAPABILITY	Output bin, Single roll system, Auto media cutter	
MEDIA DIMENSION		
ROLL	203mm – 610mm(W) (24"), A1+	
PRINTING AREA (WIDTH)	Max. 610mm (BorderFree Printing width: 10", 13", 14", 16", 17", 515mm, 594mm, 609.6mm)	

PRINT MARGINS	
ROLL MEDIA	3 modes available; mode 1: 3mm on all edges (top, sides, bottom) mode 2: 15mm (top and bottom), 3mm (sides) mode 3: 15mm (top, sides, bottom), 2 modes available; mode 1: 3mm (top, sides, bottom) mode 2: 3mm (top and sides) 14mm (bottom)
SHEET MEDIA	
TOTAL PRINT VOLUME	20,000 A1+ sheets
CONSUMABLE PARTS	Cutter blade, maintenance tank
MAINTENANCE PARTS	Pump unit, flushing box, head cleaner, cap assembly
RELIABILITY	
CUTTER BLADE	Coat paper, approx. 2,000 cuts Film, approx. 1,000 cuts
CARRIAGE MOTOR	Approx. 20,000 A1+ sheets
ROLL DIMENSIONS	Core diameter 2" or 3", Max. Outside Diameter ø150mm
MEMORY	64MB
LANGUAGES	ESC / P2 Raster
INTERFACES (STANDARD)	
USB 2.0 (Compatible with 1.1), IEEE 1394 Optional: Type B I/F (Ethernet)	
VOLTAGE / CURRENT / FREQUENCY	100 – 120V version, 220 – 240V version
POWER CONSUMPTION	
PRINTING	55W or less
STANDBY	6W or less
POWER OFF	1W or less
DIMENSIONS	
1178mm(W) x 501mm(D) x 560mm(H) 1178mm(W) x 745mm(D) x 1180mm(H) (with stand)	
WEIGHT	
Approx. 48.9kg (excluding Ink and Media) Stand Approx. 10.5kg	
UTILITY SOFTWARE	
STANDARD	Epson LFP Remote Panel, Epson ColorBase
OPTIONAL	Epson PageProofer, Epson CopyFactory, Epson Stylus RIP V3
EPSON STYLUS PRO 9800	
SIZE	44 inch wide (B0+)
INK MODE	8 colour
RESOLUTION	2880dpi x 1440dpi Epson Variable-sized Droplet Technology
INK SYSTEM	9-Colours pigment ink (C, M, Y, LC, LM, LK, LLK, Photo K, Matte K) with 8 slots) only one of Matte K and Photo K could be used for print. Ink conversion cartridges are required for ink change between Matte K and Photo K Individual high capacity ink cartridge Ink Capacity 110ml or 220ml (Different ink as Pro 4000 / 7600 / 9600)
PRINTER SPEED	
B0+ size, Colour 360dpi x 360dpi : Approx. 5.1 minutes (Plain Paper : Draft Mode) 360dpi x 360dpi : Approx. 10.9 minutes (Plain Paper : Fast Mode) 720dpi x 360dpi : Approx. 13.6 minutes (Plain Paper : Quality Mode) 720dpi x 360dpi : Approx. 10.9 minutes (Coated Media : Fast Mode) 720dpi x 720dpi : Approx. 29.0 minutes (Coated Media : Quality Mode) 1440dpi x 720dpi : Approx. 42.5 minutes (Photo Mode) *47.3 minutes in case of the Advanced B&W Photo Mode 2880dpi x 1440dpi : Approx. 81.7 minutes (Super Photo Mode)	
PRINTER DRIVER	
Windows® 2000 / XP, Mac® OS X, OS 9	
HEAD CONFIGURATION	
180 nozzles x 8 with VSDT	
PAPER INPUT CAPABILITY	
ROLL MEDIA	Single roll Media width Minimum media length Media thickness Manual insertion feeder for media up to 1.5mm Media width Media thickness
CUT SHEET	1 roll < 150mm / Outside diameter 203.2mm – 1118mm (8" – 44") 279mm 0.08mm – 0.50mm size A4 / LTR – A0+ / 44", (210mm – 1118mm) 0.08mm – 1.50mm
PAPER OUTPUT CAPABILITY	
Output bin, Single roll system, Auto media cutter	
MEDIA DIMENSION	
ROLL	203mm – 1118mm(W) (44"), B0+
PRINTING AREA (WIDTH)	
Max. 1118mm (BorderFree Printing width: 10", 13", 14", 16", 17", 515mm, 594mm, 609.6mm, 728mm, 914.4mm, 117.6mm)	
PRINT MARGINS	
ROLL MEDIA	3 modes available; mode 1: 3mm on all edges (top, sides, bottom) mode 2: 15mm (top and bottom), 3mm (sides) mode 3: 15mm (top, sides, bottom), 2 modes available; mode 1: 3mm (top, sides, bottom) mode 2: 3mm (top and sides) 14mm (bottom)
SHEET MEDIA	
TOTAL PRINT VOLUME	20,000 B0+ sheets
CONSUMABLE PARTS	Cutter blade, maintenance tank
MAINTENANCE PARTS	Pump unit, flushing box, head cleaner, cap assembly
RELIABILITY	
CUTTER BLADE	Coat paper, approx. 2,000 cuts Film, approx. 1,000 cuts
CARRIAGE MOTOR	Approx. 20,000 B0+ sheets
ROLL DIMENSIONS	Core diameter 2" or 3", Max. Outside Diameter ø150mm
MEMORY	128MB
LANGUAGES	ESC / P2 Raster
INTERFACES (STANDARD)	
USB 2.0 (Compatible with 1.1), IEEE 1394 Optional: Type B I/F (Ethernet)	
VOLTAGE / CURRENT / FREQUENCY	100 – 120V version, 220 – 240V version
POWER CONSUMPTION	
PRINTING	50W or less
STANDBY	6W or less
POWER OFF	1W or less
DIMENSIONS	
1702mm(W) x 678mm(D) x 1196mm(H)	
WEIGHT	Approx. 90kg (excluding Ink and Media)

*** Lightfastness Test Criteria (Indoor Display Condition)**
Light Source: Fluorescent Light
Temperature: 24°C
Glass mount: 2mm, soda lime
Display-life calculation: Total illuminance
Test Conditions
1. Under fluorescent light (Indoor Display Condition) with glass mount
2. The data is calculated by Epson's accelerated test and it does not mean Epson guarantees periods.
3. The estimated longevity does not indicate the colour changing and the durability of the paper itself.

As an International ENERGY STAR Partner, Epson has determined that this product meets the International ENERGY STAR guidelines for energy efficiency. Epson is the registered trademark of SEIKO Epson Corporation. Epson STYLUS, PerfectPicture, MicroPiezo, AcuPhoto Halftoning, QuickDry are the trademarks of SEIKO Epson Corporation. All other names and company names used herein are for identification purpose only and may be the trademarks or registered trademarks of their respective owners. Epson disclaims any and all rights in those marks. All print samples shown herein are simulations. Specifications are subject to change without notice.



FOR HIGHEST QUALITY
DEMAND EPSON
INKS+PAPERS