



escape the ordinary.

DEALER KIT
United Kingdom
& Ireland
2019



navionics.com/company/dealers

INDEX

Retail price list	3
Navionics is constantly updating charts	4
See our latest changes	5
GPS plotter charts	6
Advanced features	7
Boating app and web API: engage your customers	8
New 2019 packaging	9
No longer supported GPS chartplotters	10
Memory cards	10
USB readers provided in packaging	10
How to: <ul style="list-style-type: none">- Return goods under warranty- Report a cartography problem- Manage updates of old Navionics products	11
Marketing material	12
Useful links	13

See detailed charts at webapp.navionics.com
Add our charts to your website at developers.navionics.com

RETAIL PRICE LIST

	£ RRP ex. VAT	£ RRP inc. VAT
Navionics+		
Small - Regions	124.16	149.00
XL9	190.83	229.00
Platinum+		
XL		
Europe, Africa, Middle East and Oceania	190.83	229.00
Americas (except below)	149.16	179.00
Americas: 647P+, 648P+, 649P+, 652P+	190.83	229.00
XL3		
Europe, Africa, Middle East and Oceania	282.50	339.00
Americas (except below)	282.50	339.00
Americas: 909P-2, 910P+, 911P-2, 913P+, 914P-2, 915P-2, 916P-2	215.83	259.00
Navionics+ Updates ¹		
XL9	95.42	114.50

Navionics reserves the right to modify this price list without notice.
Visit navionics.com to check coverage.

SAVE UP TO 50% ON UPDATES

Old product owned	Buy a Navionics+ Updates card	Exchange for a new card
Silver and Gold	✓	✓
Navionics+	✓	✓
Platinum	✗	✓
Platinum+	✗	✓
Cards from other brands: C-MAP®, Lowrance®, Magellan® (SD/MSD format)	✓	✓

NAVIONICS IS CONSTANTLY UPDATING CHARTS

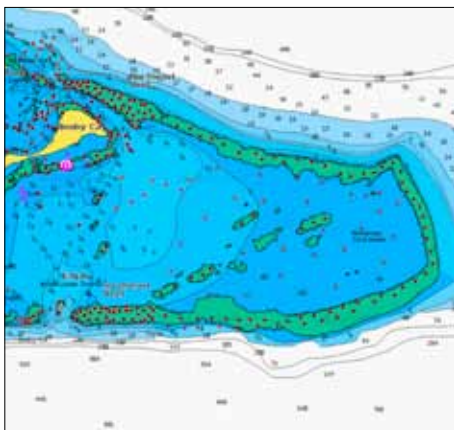
Navionics makes it easy for boaters to always have the latest content — because it's important. Customers can access the most current charts every day. Only Navionics delivers updates in such a timely way.

2,000 UPDATES PER DAY ... AND MORE

Navionics constantly searches new data sources and carefully selects the content that you see in Nautical Chart. In addition, continuous inputs within SonarChart™ and Community Edits ensure the most current information possible at a very local level.

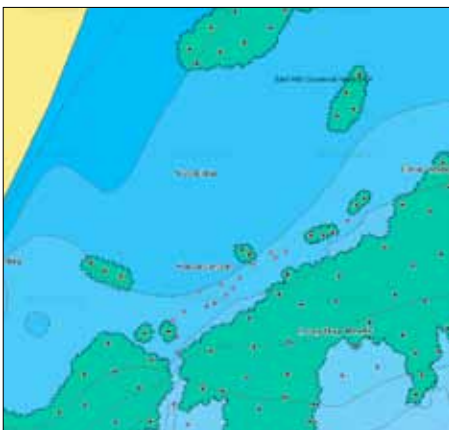
TIMELY INTEGRATION

Navionics processes data with incredible speed and accuracy thanks to this sophisticated proprietary software systems, while the experienced team of cartographers scrutinize the results before any changes are released within their products.



ROCKS AND REEFS

In addition to our researchers, we encourage boaters to share the locations of underwater and exposed rocks. Once verified and integrated, these potential hazards are displayed clearly within our products.



AESTHETIC IMPROVEMENTS

As an example, reefs are now more clearly visible because of a new presentation layer designed specifically for this type of chart feature.



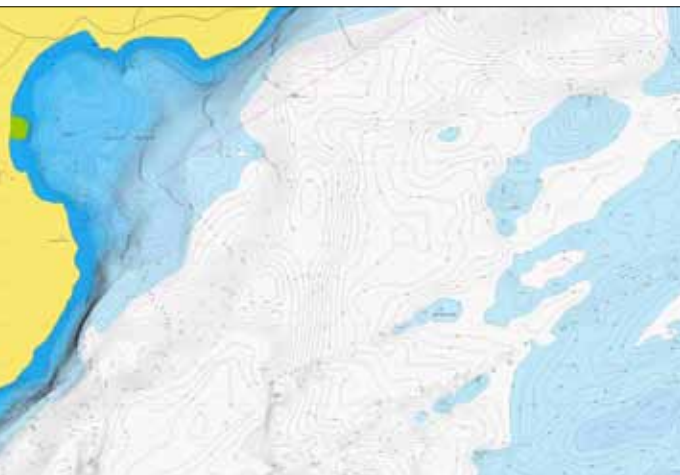
NEW AND UPDATED LAKES

Navionics charts include more than 38,000 lakes worldwide, and the list continues to grow. Besides adding lakes, we constantly review shorelines and update details with new sources, such as multi-beam survey data.



SHORELINE UPDATES

The forces of nature, as well as construction projects such as dams, dredging and marina development, affect the shape of coastal, lake, and river shorelines. Navionics' experienced cartography teams meticulously review and redraw these features as they change over time.



CONTOUR DETAIL

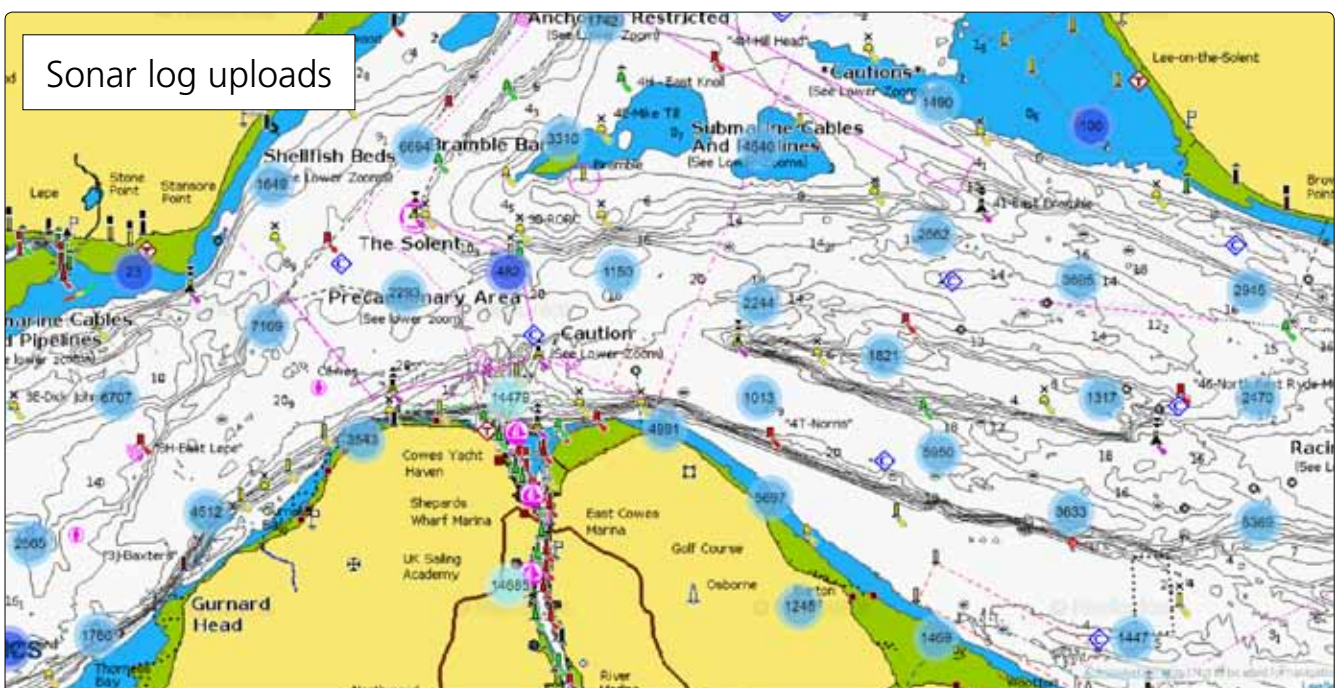
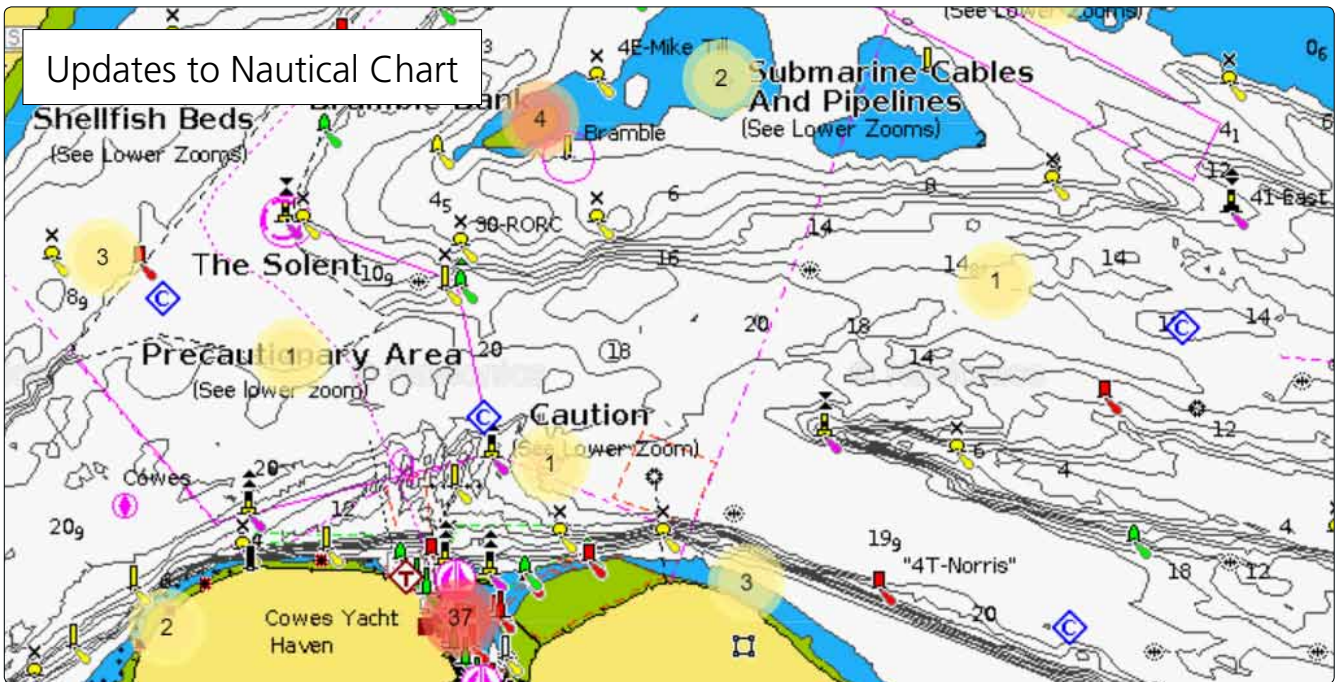
SonarChart™ is constantly enhanced by millions of sonar logs from boaters all over the world. These contributions are integrated with existing data to reflect the ever-changing conditions of sea, lake and river bottoms at a very local level.

SEE OUR LATEST CHANGES

In the last twelve months we made **26,866 Nautical Chart* updates** to the UK, Ireland and Holland charts.

Visit navionics.com/see-our-latest-changes to see examples of the impressive quantity of updates we make worldwide.

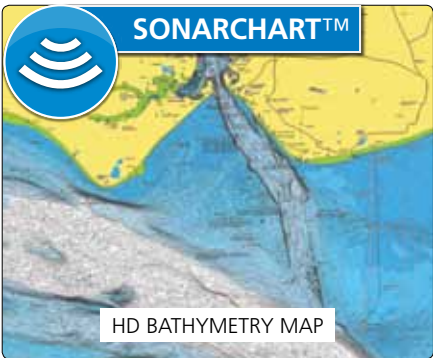
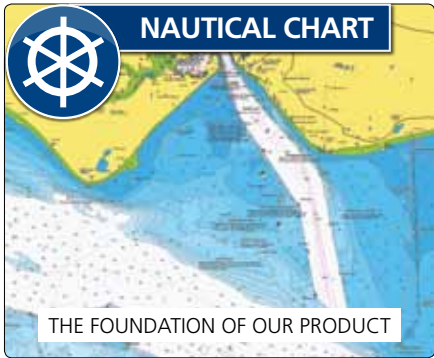
*as at March 2019.



GPS PLOTTER CHARTS

NAVIONICS+

Navionics+ offers the best value and **the widest database** of marine and lakes content within **Nautical Chart**, **SonarChart™** and **Community Edits**, and it offers **daily updates** and **advanced features for one year**. Navionics+ is available in a ready-to-use version that is preloaded for each region with Nautical Chart and SonarChart and in a downloadable version. Customers **must activate** the card within two months of purchase to start the one-year subscription and to download Community Edits.



NAVIONICS+ SMALL

Navionics+ Small delivers the great value of Navionics+ in smaller regions. It is possible to download a larger Navionics+ region instead of a Navionics+ Small regions on the same card by paying the difference online (it might not be possible to download all the desired content on a 2 GB card). Navionics+ Small is also available in a ready-to-use version that is preloaded for each region with Nautical Chart and SonarChart.

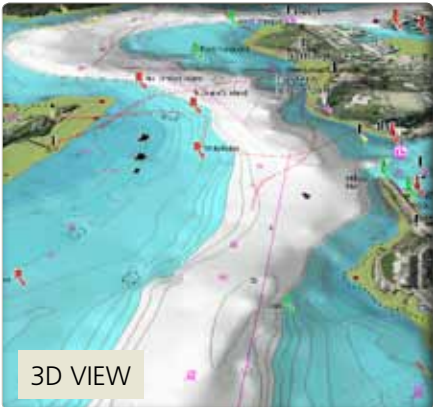
NAVIONICS+ UPDATES

If your customer already owns a chart card, Navionics+ Updates is the most convenient way to **update it and upgrade to Navionics+**. Navionics+ Updates is available in a ready-to-use version that is preloaded for each region with Nautical Chart and SonarChart and in a downloadable version. Both versions have to be activated using another chart card. In order to download Community Edits, the customer **must activate** the preloaded version within two months of purchase. Compatible with cards from Navionics (except Platinum+) as well as with C-MAP®, Lowrance® and Magellan®. Check navionics.com/compatibility.

PLATINUM+

All the same marine and lakes content and advanced features found in Navionics+ are augmented with **satellite overlay**, **3D View** and **panoramic photos** to provide the ultimate situational awareness.

Designed with the most demanding boaters and serious anglers in mind, these additional viewing options can be used on a growing number of GPS plotters. Available in XL and XL3 size.



ADVANCED FEATURES



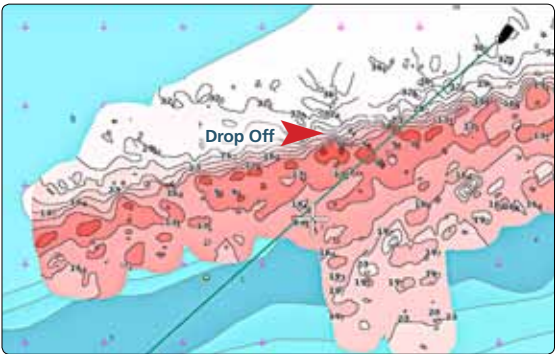
DOCK-TO-DOCK AUTOROUTING¹

Head to your next destination with Dock-to-dock Autorouting. It creates a suggested route, from a real start point to a real end point, based on chart data and navigation aids.

¹Autorouting is for planning purposes only and does not replace safe navigation operations.

SONARCHART™ LIVE

Create your own maps on the fly. Watch new 1 ft/0.5 m HD bathymetry maps develop in real time when out on the water.



ADVANCED MAP OPTIONS

Change the way you view Navionics charts and focus on the details that matter most to you. Highlight shallow areas, adjust contour density or select a fishing range.

PLOTTER SYNC

Transfer routes and markers, update charts, and more between your plotter card and mobile app — wirelessly. You can even activate or renew your card's subscription and upload sonar logs.



Navionics advanced features are available using **Navionics+**, **Navionics+ Updates** or **Navionics Updates** and **Platinum+** cards that are within their active chart updates subscription period. They can be used on Raymarine®, Lowrance®, Simrad and B&G compatible plotters.

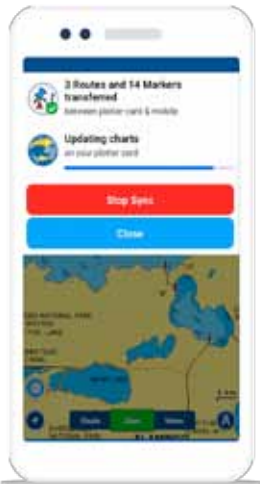
Learn more at navionics.com/partners/raymarine and at navionics.com/partners/navico-lowrance-simrad-b-and-g.

BOATING APP AND WEB API: ENGAGE YOUR CUSTOMERS

BOATING APP

PLAN ON MOBILE, GO ON PLOTTER

Conveniently plan your route using our Boating app. Study your cruising itinerary, identify your fishing spots, then create your route with Dock-to-dock Autorouting¹ and finally transfer it to your plotter. Take advantage of this mobile feature if you don't have Dock-to-dock Autorouting* on your plotter.



TRANSFER ROUTES AND MARKERS

Easily transfer routes and markers between your plotter card and mobile app. It's a great time saver. An active app subscription is required. Watch the [video](#).



UPDATE CHARTS

Update Nautical Charts, SonarChart™ and Community Edits on your plotter card to get the most current data via Plotter Sync. Active subscriptions and matching regions are required on both the plotter card and the app.



ACTIVATE

From your boat, you can activate Navionics+ XL9 or Platinum+ plotter cards to enable daily chart updates and advanced features.

You can also renew your plotter card subscription for another year.

If you have used Plotter Sync before directly from the app simply choose Menu>Device Connected.

FREE TRIAL

Great on its own or to supplement your boat's electronics, experience our charts and features for all coverage areas before you subscribe.



WEB API

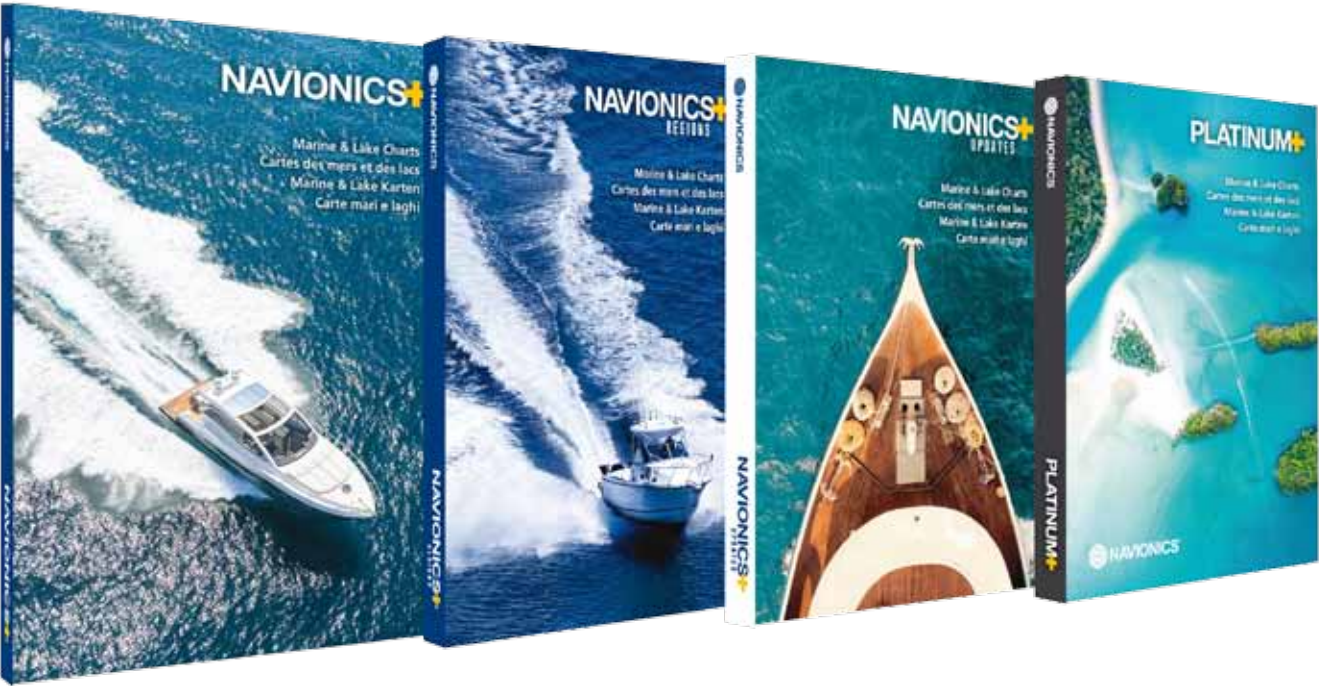
Navionics Web API allows charts to be incorporated into any third-party website.

More than 1,000 websites use it to overlay their own content on Navionics charts to better engage their customers.



¹Autorouting is for planning purposes only and does not replace safe navigation operations.




NEW 2019 PACKAGING



Navionics endeavour to follow environmentally friendly practices wherever possible. This is one of the reason why we designed new environmentally friendly, plastic-free packaging that will soon be using FSC-certified materials for our cards.



NO LONGER SUPPORTED GPS CHARTPLOTTERS

MODEL	
	FishElite Series Intellimap & SeaCharter iGPS series Intellimap & SeaCharter non-iGPS models FishStrike Series SeaChamp Series
	H2O, Hunt AirMap 600 Endura Sierra, Out&Back, Safari GlobalMap Baja 480c, 840, 540 GlobalMap 4800m GlobalMap 2500c, 3600c, 4900m, 5500c, 6500c, 6600c, 7500c, 7600c iFINDER Expedition c, Hunt c, iWay 250 LMS 330c, 332c, 335c, 337c, 339c, 480m LCX 18c, 19c, 20c, 104c, 110c, 111c, 26C HD, 25c, 17m, 38c HD XOG Crossover
	aSeries 65, 60

Navionics cannot certify that older plotters will work with the current product line. Some products such as Navionics+ and Navionics+ Updates downloadable may work provided that the cards are no bigger than 2 GB; however, Navionics cannot guarantee their performance and correct behaviour.

MEMORY CARDS


SD/MSD (Micro SD)



CF (Compact Flash)


SD

DISCONTINUED

USB READER PROVIDED IN PACKAGING

SD/MSD (Micro SD)


CF (Compact Flash)


HOW TO:

Return goods under warranty

Navionics cards are subject to a TWO-YEAR WARRANTY from the date of purchase. All the Navionics charts bought within two years are eligible for return.

Exceptions:

- Under no circumstances will defective cards be replaced under warranty without a valid proof of purchase (receipt/invoice) provided by the end user.
- Damage to memory modules, and lost or stolen charts are not covered by warranty.
- The cards should not contain personal or end user files other than navigation data.
- The MSD (Micro SD) media are accepted only if complete with their own SD adaptor intact.

For warranty replacement, media cards should be returned to your authorized Navionics Distributor along with their proof of purchase.

Report a cartography problem

Either you or your customer may report a cartographic problem:

- Go to [here](#) and choose to report a problem with a **GPS chartplotter** product or on the **Navionics Boating app** selecting the relevant section to report a problem, please supply as much information as possible. Once the issue is resolved you will be notified by email.
- Alternatively, contact help@navionics.com.

Once the problem is resolved, you will be notified by email.

MARKETING MATERIAL

Contact your area manager to order any item

Stickers



Square logo
sticker
12 x 12 cms
24 x 24 cms

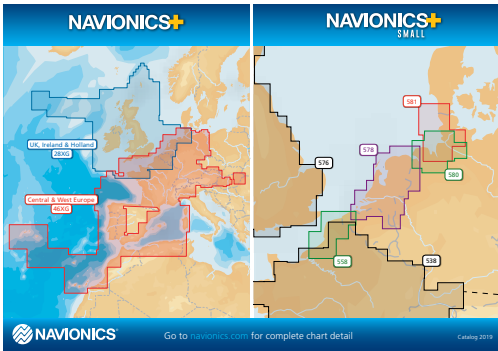


New dealer window shop sticker
10.5 x 25 cms



Extended logo sticker
7 x 30 cms
16 x 70 cms

Posters



Worldwide and local coverages
of Navionics+/Navionics+ Updates and Platinum+
70 x 100 cms
50 x 70 cms

Booklet holder



USEFUL LINKS

OEM Pages

[B&G](#)

[Raymarine](#)

[Humminbird](#)

Compatibility Guides

[Here](#)

Sonar Log Recording Tutorials

[Here](#)

Sonar Logs Uploading Tutorials

[Here](#)

SonarChart™ Viewing Tutorials

[Here](#)

Chart Installer - Tutorial

[Activate](#)

[Update](#)

[Download](#)

[Renew](#)

Plotter Sync

[Here](#)

Comparison Table

[Here](#)

Dealer Kit Support Page

[Here](#)

FTP Catalog

Address: [ftp.navionics.eu](ftp://ftp.navionics.eu)

Username: catalog

Password: K7j63kK15

FOR MORE INFORMATION AND SUPPORT, PLEASE CONTACT NAVIONICS UK

Lance Godefroy

General Manager, Navionics UK

lance@navionics.co.uk

Tel: 01752 258726 · Direct: 01752 225499 · Mobile: 07968 194939