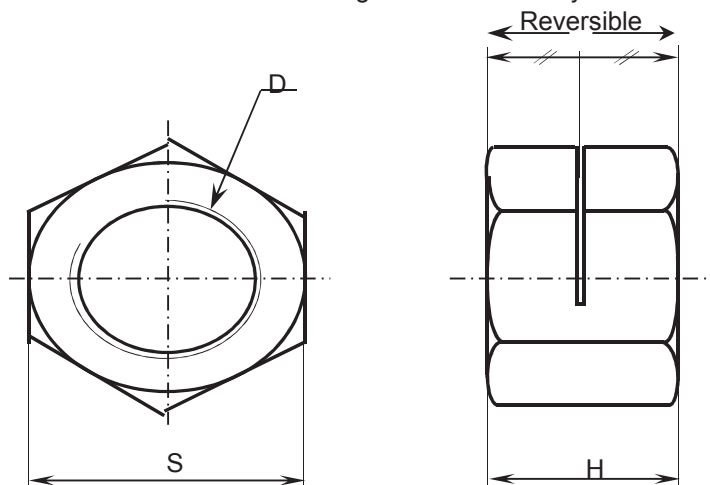


# SINGLE SLOTTED LOCKING NUTS

# ESN H100

EDITION JUNE 2002

PRINCIPLE : Selflocking effect obtained by axial deformation of the upper part of the thread



D	pitch	S	H	Designation SNEP
M4	0,70	7	4	ESN H100 M4X070 **
M5	0,80	8	5	ESN H100 M5X080 **
M6	1,00	10	6	ESN H100 M6X100 **
M8	1,25	13	8	ESN H100 M8X125 **
M10	1,50	16	10	ESN H100 M10X150 **
M12	1,75	18	12	ESN H100 M12X175 **
M14	2,00	21	14	ESN H100 M14X200 **
M16	2,00	24	16	ESN H100 M16X200 **
M18	2,50	27	18	ESN H100 M18X250 **
M20	2,50	30	20	ESN H100 M20X250 **
M22	2,50	34	22	ESN H100 M22X250 **
M24	3,00	36	24	ESN H100 M24X300 **
M27	3,00	41	27	ESN H100 M27X300 **

Material codes	
Steel R60	R60
Steel R80	R80
Stainless steel A2	A2
Stainless steel A4	A4
UZ40MNA (brass)	BL3
AU4Pb (Aluminium)	DM

Nut type \_\_\_\_\_  
 Ø nominal + pitch \_\_\_\_\_

Material code \_\_\_\_\_

**DIMENSIONS :** According NFE 25 411

**THREAD** Profil ISO - according to ISO 965-2 Quality 6H

**MECHANICAL CHARACTERISTICS :** According to NF EN ISO 2320 NFE 25035  
 Control on "ERICHSEN" test bench

**STANDARD PROTECTIONS**

Stainless steel : Anti seizing protection "SITAL BHT"  
 Nuts R60 : White zinc plated  
 Nuts R80 : White zinc plated

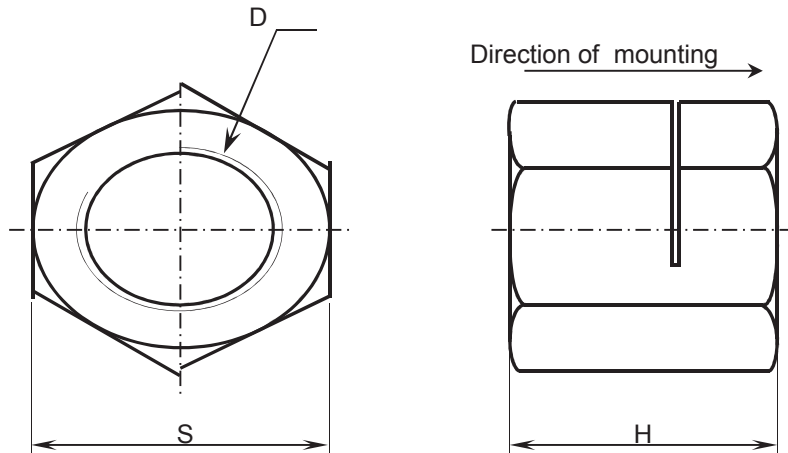
Please consult us for: other materials - other protections - specials.

# SINGLE SLOTTED LOCKING NUTS

# ESN H130

EDITION JUNE 2002

PRINCIPLE : Selflocking effect obtained by axial deformation of the upper part of the thread



D	pitch	S	H	Designation SNEP
M4	0,70	7	5,2	<b>ESN H130 M4X070</b> **
M5	0,80	8	6,5	<b>ESN H130 M5X080</b> **
M6	1,00	10	7,8	<b>ESN H130 M6X100</b> **
M8	1,25	13	10,4	<b>ESN H130 M8X125</b> **
M10	1,50	16	13	<b>ESN H130 M10X150</b> **
M12	1,75	18	15,6	<b>ESN H130 M12X175</b> **
M14	2,00	21	18,2	<b>ESN H130 M14X200</b> **
M16	2,00	24	20,8	<b>ESN H130 M16X200</b> **
M18	2,50	27	23,4	<b>ESN H130 M18X250</b> **
M20	2,50	30	26	<b>ESN H130 M20X250</b> **
M22	2,50	34	28,6	<b>ESN H130 M22X250</b> **
M24	3,00	36	31,2	<b>ESN H130 M24X300</b> **
M27	3,00	41	35,1	<b>ESN H130 M27X300</b> **

Material codes	
Class 8 steel	R60
Class 10 steel	R80
Stainless steel A2	A2
Stainless steel A4	A4
UZ40MNA (brass)	BL3
AU4Pb (Aluminium)	DM

**Certified "SNCF"**  
**CF 00-040 FP n° 5**

Nut type \_\_\_\_\_  
∅ nominal + pitch \_\_\_\_\_

Material code \_\_\_\_\_

**DIMENSIONS :** According to NFE 25 411

**THREAD** Profil ISO - according to ISO 965-2 Quality 6H

**MECHANICAL CHARACTERISTICS :** According to NF EN ISO 2320 NFE 25035  
Control on "ERICHSEN" test bench

STANDARD PROTECTIONS	Stainless steel : Anti seizing protection "SITAL BHT"
	Nuts R60 : White zinc plated
	Nuts R80 : White zinc plated

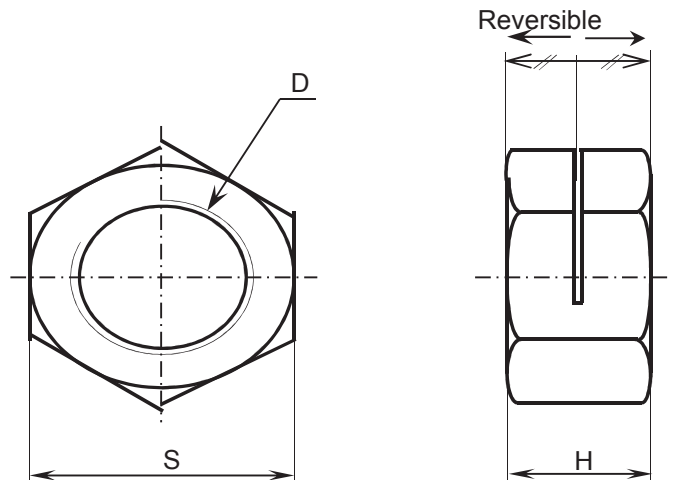
Please consult us for: other materials - other protections - specials.

# SINGLE SLOTTED LOCKING NUTS

# ESN H80

EDITION JUNE 2002

PRINCIPLE : Selflocking effect obtained by axial deformation of the upper part of the thread



D	pitch	S	H	Designation SNEP
M6	1,00	10	4,8	ESN H80 M6X100 **
M8	1,25	13	6,4	ESN H80 M8X125 **
M10	1,50	16	8	ESN H80 M10X150 **
M12	1,75	18	9,6	ESN H80 M12X175 **

Material codes	
Steel R60	R60
Steel R80	R80
Stainless steel A2	A2
Stainless steel A4	A4

Nut type \_\_\_\_\_  
 Ø nominal + pitch \_\_\_\_\_

Material code \_\_\_\_\_

**DIMENSIONS :** According to NFE 27 024 fine quality.

**THREAD:** Profile ISO - According ISO 965-2 Quality 6H

**MECHANICAL CHARACTERISTICS :** Control on "ERICHSEN" test bench  
 locking torque according to NF EN ISO 2320

**STANDARD PROTECTION**

**Stainless steel: Anti seizing protection "SITAL BHT"**

**Nuts R60 : White zinc plated**

**Nuts R80 : White zinc plated**

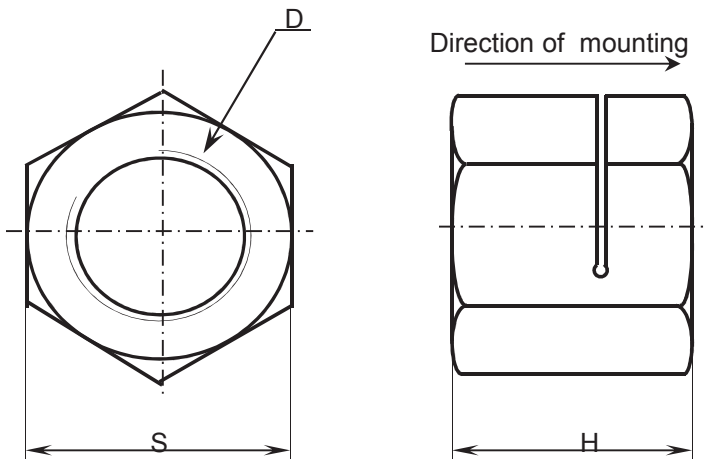
Please consult us for: other materials - other protections - specials.

# SINGLE SLOTTED LOCKING NUTS

# USN

EDITION JUNE 2002

PRINCIPLE : Selflocking effect obtained by axial deformation of the upper part of the thread



D	Pitch	S	H	Designation SNEP
M30	3,50	46	30	<b>USN M30X350 **</b>
M33	3,50	50	33	<b>USN M33X350 **</b>
M36	4,00	55	36	<b>USN M36X400 **</b>
M39	4,00	60	39	<b>USN M39X400 **</b>
M42	4,50	65	42	<b>USN M42X450 **</b>
M45	4,50	70	45	<b>USN M45X450 **</b>
M48	5,00	75	48	<b>USN M48X500 **</b>
M52	5,00	80	52	<b>USN M52X500 **</b>
M56	5,50	85	56	<b>USN M56X550 **</b>
M60	5,50	90	60	<b>USN M60X550 **</b>
M64	6,00	95	64	<b>USN M64X600 **</b>
M68	6,00	100	68	<b>USN M68X600 **</b>
M72	6,00	105	72	<b>USN M72X600 **</b>
M76	6,00	110	76	<b>USN M76X600 **</b>
M80	6,00	115	80	<b>USN M80X600 **</b>

Material codes	
Steel R60	R60
Steel R80	R80
Stainless steel A2	A2
Stainless steel A4	A4

Nut type \_\_\_\_\_ Material code \_\_\_\_\_  
 ∅ nominal + pitch \_\_\_\_\_

**DIMENSIONS :** According to NFE 25 411 until M52

**THREAD :** Profile ISO - according to ISO 965-2 Quality 6H

<b>STANDARD PROTECTION</b>	<b>Stainless steel: Anti seizing protection "SITAL BHT"</b>
	<b>Nuts R60 : White zinc plated</b>
	<b>Nuts R80 : White zinc plated</b>

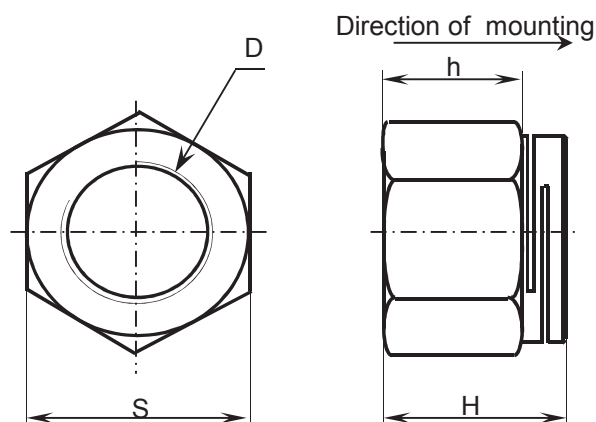
Please consult us for: other materials - other protections - specials.

# DOUBLE SLOTTED LOCKING NUTS

# DAH

EDITION JUNE 2002

PRINCIPLE : Selflocking effect obtained by axial deformation of the upper part of the thread



D	pitch	S	H	h	Designation SNEP	
M4	0,70	7	5,6	3	DAH M4X070	**
M5	0,80	8	6,5	3,7	DAH M5X080	**
M6	1,00	10	8	4,5	DAH M6X100	**
M8	1,25	13	10	5,5	DAH M8X125	**
M10	1,50	16	12,5	6,5	DAH M10X150	**
M12	1,75	18	15	8,5	DAH M12X175	**
M14	2,00	21	17,5	10	DAH M14X200	**
M16	2,00	24	18,7	12	DAH M16X200	**
M18	2,50	27	22	14	DAH M18X250	**
M20	2,50	30	24	16	DAH M20X250	**
M22	2,50	34	27	19	DAH M22X250	**
M24	3,00	36	24	14	DAH M24X300	**
M27	3,00	41	33	22	DAH M27X300	**

Material codes	
STEELS	CL8 CL10
STAINLESS STEEL	A2/70 A2 A4/80 A4

**Certified "SNCF"  
CF 00-040 FP n° 6**

Nut type \_\_\_\_\_  
Ø nominal + pitch \_\_\_\_\_

Material code \_\_\_\_\_

**DIMENSIONS :** According to NFE 25 411

**THREAD** Profile ISO - according to ISO 965-2 Quality 6H

**MECHANICAL CHARACTERISTICS :** According to NF EN ISO 2320 NFE 25035  
Control on "ERICHSEN" test bench

**STANDARD PROTECTIONS**

**Steel nuts : White zinc plated**

**Stainless steel nuts : Anti seizing protection SITAL BHT**

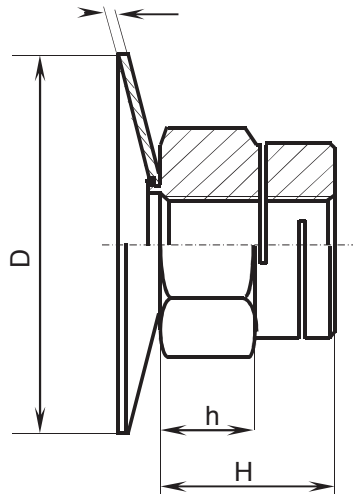
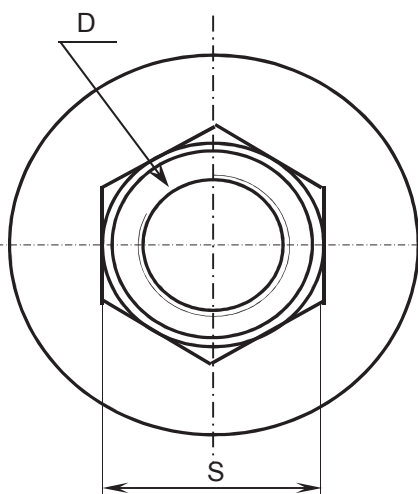
Please consult us for: other materials - other protections - specials.

# DOUBLE SLOTTED LOCKING NUT WITH CONICAL LOOSE WASHER

# DAH RC

EDITION JUNE 2002

PRINCIPLE : Selflocking effect obtained by axial deformation of the upper part of the thread



D	Pitch	S	H	e	D	Designation SNEP
M6	1,00	10	10	1,5	18	DAH RC M6 D18 **
M10	1,50	16	15,5	2	22	DAH RC M10 D22 **
M10	1,50	16	15,5	2	27	DAH RC M10 D27 **
M12	1,75	18	18,5	2	27	DAH RC M12 D27 **
M12	1,75	18	18,5	2	30	DAH RC M12 D30 **
M14	2,00	21	21	2	30	DAH RC M14 D30 **

Material codes	
Stainless steel A2/70	A2
Stainless steel A4/80	A4

Nut type

∅ nominal + pitch

Material code

∅ washer

**Certified "SNCF"**  
**sivant CF 00-040 FP n° 6**  
**et NFE 25 035**

## THREAD

Profile ISO - according to ISO 965-2 Quality 6H

## FUNCTIONAL CHARACTERISTICS

Control on "ERICHSEN" bench according FNE 25 035  
 Washer test according to NFE 25 415

## MECHANICAL CHARACTERISTICS

According to ISO 2320

## STANDARD PROTECTIONS

Anti seizing protection : SITAL BHT or STANAL

Please consult us for: other materials - other protections - specials.