



International
Confederation
of Midwives

Strengthening Midwifery Globally

Essential Competencies *for Midwifery Practice*

2018 UPDATE

Contents

- 2 INTRODUCTION
- 3 THE REVIEW PROCESS
- 4 COMPETENCY FRAMEWORK
- 5 FRAMEWORK STRUCTURE
- 6 EXPLANATION OF COMPETENCY COMPONENTS
- 7 SIMPLIFIED LANGUAGE
- 7 ADVANCED, OPTIONAL, CONTEXT-SPECIFIC INDICATORS, AND COMPETENCIES
- 8 GENERAL COMPETENCIES
- 13 PRE-PREGNANCY AND ANTENATAL
- 17 CARE DURING LABOUR AND BIRTH
- 19 ONGOING CARE OF WOMEN AND NEWBORNS

Introduction

The International Confederation of Midwives (ICM) Essential Competencies for Midwifery Practice outline the minimum set of knowledge, skills and professional behaviours required by an individual to use the designation of midwife as defined by ICM¹ when entering midwifery practice. The competencies are presented in a framework of four categories that sets out those competencies considered to be essential and that “represent those that should be an expected outcome of midwifery pre-service education”². These competency statements are “linked to authoritative clinical practice guidance documents used by the World Health Organization”³ and ICM’s Core documents and Position Statements⁴.

Guidance documents undergo revision based on ever-evolving research. ICM’s essential competency statements are also evaluated and amended as the relevant evidence concerning sexual, reproductive, maternal and newborn health care and midwifery practices emerges. The competencies presented in this document have been updated through such a review process.

1 ICM *International Definition of the Midwife*, updated June 2017, available for download on ICM Website.

2 Butler et al. (2017). *Update of the International Confederation of Midwives’ Essential Competencies for Basic Midwifery Practice. Draft Final Report*. April 24, 2017, p. 2. (internal ICM document).

3 Ibid

4 Available on the ICM website.

The Review Process

ICM's 'Essential Competencies for Basic Midwifery Practice' were first developed in 2002 and updated in 2010 and 2013. Between 2014 – 2017 the competencies were reviewed through a research study led by a team from the University of British Columbia (UBC)⁵ and supported by a core working group of midwifery educators⁶ and a taskforce of stakeholders⁷. The research process included a literature review, thematic analysis of policy and other documents related to midwifery competencies, a modified Delphi approach involving three rounds of an online survey and development of a conceptual framework for presentation of the competencies. The three-round Delphi survey was

conducted online in French, English and Spanish with an inclusive sample of invited participants drawn from ICM Member Associations (across all ICM regions and language groups and from low, middle and high-income countries), midwifery educators, midwifery regulators, ICM Standing Committees, the ICM Board and stakeholders.

The ICM Board received the final draft report and updated competencies, including a proposed new competency framework, from the research team in April 2017. Council Members asked that the final format of the competencies would enhance simplicity, accessibility, usability and measurability of the competencies by multiple audiences. Two consultants, a learning designer⁸ and a midwife educational expert⁹, revised the format of the framework and the competencies and a team from Laerdal Global Health designed the visual representation of the competencies.

5 Michelle Butler (Lead), Judith Fullerton (Consultant), Cheryl Aman (Research Coordinator), Karen Gelb (Research Manager, Midwifery Program UBC), Melanie Dowler (UBC Worklearn Student, midwifery student).

6 Michelle Butler, Judith Fullerton, Mary Barger, Carol Nelson, Camilla Schneck, Marianne Nieuwenhuijze, Rita Borg-Xuereb (ICM Board Member), Rafat Jan (ICM Board Member), Atf Gherissi, Lorena Binfa, Mizuki Takegata, Caroline Homer.

7 Jim Campbell (Director and Executive Director of the Global Health Workforce Alliance), Fran McConville (WHO – Maternal & Child Health Committee), Gloria Metcalfe (Jhpiego MNH consultant), Gerard Visser (Chair FIGO Safe Motherhood Committee), Petra ten Hoope-Bender (UNFPA), Sarah Williams (Save the Children), Joeri Vermeulen (Secretary European Midwifery Association), Kimberley Pekin (NARM & MANA), Joy Lawn (Paediatrician) /Sarah Moxon (Neonatal Nurse)

8 Carolyn Levy, Blank Design and Project Management, Vancouver, Canada

9 Karyn Kaufman, retired Professor and Head of Midwifery, McMaster University, Hamilton, Canada

Competency Framework

The competencies are organised into four categories as outlined below



1. GENERAL COMPETENCIES

Competencies in this category are about the midwife's accountabilities as a health professional, the relationships with women and other care providers and care activities that apply to all aspects of midwifery practice. All General Competencies are intended to be used during any aspect of midwifery care. Educational and/or training providers should ensure that these competencies are interwoven in any curriculum.



2. COMPETENCIES SPECIFIC TO PRE-PREGNANCY AND ANTENATAL CARE

Competencies in this category are about health assessment of the woman and fetus, promotion of health and well-being, detection of complications during pregnancy and care of women with an unintended pregnancy.



3. COMPETENCIES SPECIFIC TO CARE DURING LABOUR AND BIRTH

Competencies in this category are about assessment and care of women during labour that facilitates physiological processes and a safe birth, the immediate care of the newborn infant, and detection of complications in mother or infant.

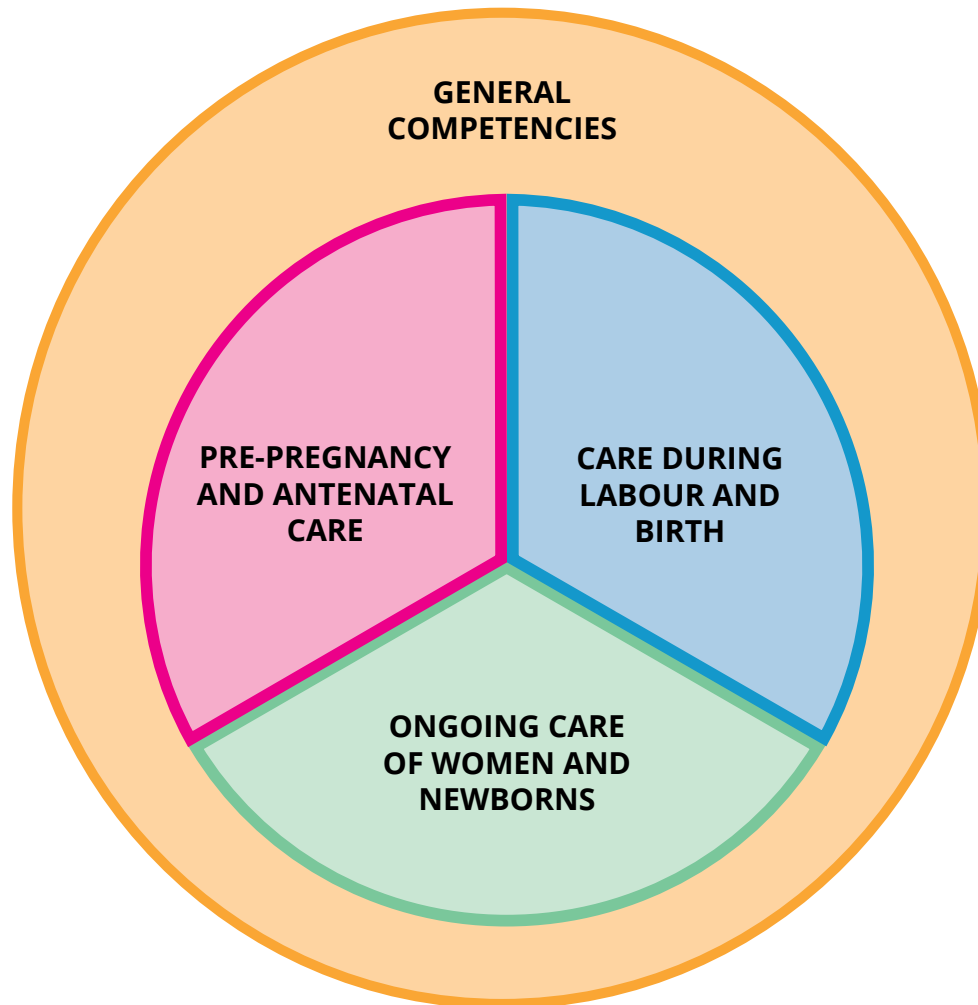


4. COMPETENCIES SPECIFIC TO THE ONGOING CARE OF WOMEN AND NEWBORNS

Competencies in this category address the continuing health assessment of mother and infant, health education, support for breast feeding, detection of complications, and provision of family planning services.

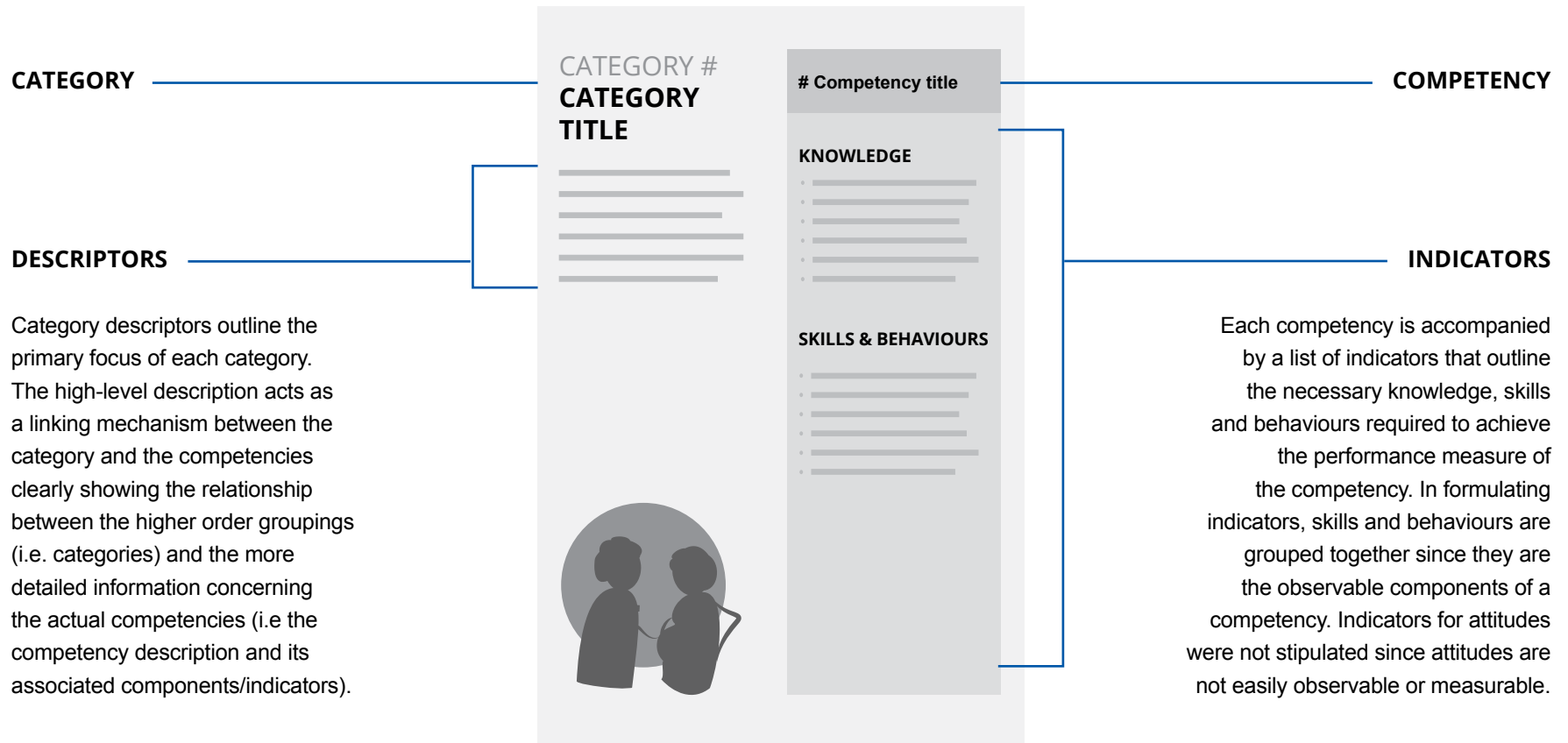
Framework Structure

The diagram below provides a visual representation of the framework structure.



Explanation of Competency Components

This graphic outlines the components of the competency framework.



CATEGORY #
COMPETENCIES
TITLE

Competency title

KNOWLEDGE

- ---
- ---
- ---
- ---
- ---
- ---

SKILLS & BEHAVIOURS

- ---
- ---
- ---
- ---
- ---
- ---



Language

The competencies and indicators were evaluated for clarity of language, measurability, and ease of translation. Concrete verbs were used to facilitate the measurement of the competency and/or indicator. All competencies and indicators are written to:

- Show alignment between the competency and indicators;
- Contain verbs appropriate for the level required and that are measurable;
- Use consistent language that is clear and free of jargon; and
- Provide sufficient detail for comprehension.

Advanced, optional, context-specific indicators, and competencies

Competencies and indicators previously designated as advanced/optional/context specific are not included in the framework for essential competencies. Such statements are conceptually inconsistent with defining the competencies that are expected of all midwives.

CATEGORY 1

GENERAL COMPETENCIES

Competencies in this category are about the midwife's accountabilities as a health professional, the relationships with women and other care providers, and care activities that apply to all aspects of midwifery practice.



1.a Assume responsibility for own decisions and actions as an autonomous practitioner

KNOWLEDGE

- Principles of accountability and transparency
- Principles and concepts of autonomy
- Principles of self-assessment and reflective practice
- Personal beliefs and their influence on practice
- Knowledge of evidence-based practices

SKILLS & BEHAVIOURS

- Demonstrate behaviour that upholds the public trust in the profession
- Participate in self-evaluation, peer review and other quality improvement activities
- Balance the responsibility of the midwife to provide best care with the autonomy of the woman to make her own decisions
- Explain the midwife's role in providing care that is based on relevant law, ethics, and evidence

1.b Assume responsibility for self-care and self-development as a midwife

KNOWLEDGE

- Strategies for managing personal safety particularly within the facility or community setting

SKILLS & BEHAVIOURS

- Display skills in management of self in relation to time management, uncertainty, change and coping with stress
- Assume responsibility for personal safety in various practice settings
- Maintain up-to-date skills and knowledge concerning protocols, guidelines and safe practice
- Remain current in practice by participating in continuing professional education (for example, participating in learning opportunities that apply evidence to practice to improve care such as mortality reviews or policy reviews.)
- Identify and address limitations in personal skill, knowledge, or experience
- Promote the profession of midwifery, including participation in professional organizations at the local and national level

1.c Appropriately delegate aspects of care and provide supervision

KNOWLEDGE

- Policies and regulation related to delegation
- Use supportive strategies to supervise others
- Role of midwives as preceptors, mentors, and role models

SKILLS & BEHAVIOURS

- Provide supervision to ensure that practice is aligned with evidence-based clinical practice guidelines
- Support the profession's growth through participation in midwifery education in the roles of clinical preceptor, mentor, and role model

1.d Use research to inform practice

KNOWLEDGE

- Principles of research and evidence-based practice
- Epidemiologic concepts relevant to maternal and infant health

SKILLS & BEHAVIOURS

- Discuss research findings with women and colleagues
- Support research in midwifery by participating in the conduct of research

1.e Uphold fundamental human rights of individuals when providing midwifery care

KNOWLEDGE

- Laws and/or codes that protect human rights
- Sexual, reproductive health rights of women and girls
- Development of gender identity and sexual orientation
- Principles of ethics and Human Rights within midwifery practice

SKILLS & BEHAVIOURS

- Provide information to women about their sexual and reproductive health rights
- Inform women about the scope of midwifery practice and women's rights and responsibilities
- Provide information and support to individuals in complex situations where there are competing ethical principles and rights
- Practice in accordance with philosophy and code of ethics of the ICM and national standards for health professionals
- Provide gender sensitive care



1.f Adhere to jurisdictional laws, regulatory requirements, and codes of conduct for midwifery practice

KNOWLEDGE

- Explain the laws and regulations of the jurisdiction regarding midwifery
- National/state/local community standards of midwifery practice
- Ethical principles
- ICM and other midwifery philosophies, values, codes of ethics

SKILLS & BEHAVIOURS

- Practise according to legal requirements and ethical principles
- Meet requirements for maintenance of midwifery registration
- Protect confidentiality of oral information and written records about care of women and infants
- Maintain records of care in the manner required by the health authority
- Comply with all local reporting regulations for birth and death registration
- Recognize violations of laws, regulations, and ethical codes and take appropriate action
- Report and document incidents and adverse outcomes as required while providing care

1.g Facilitate women to make individual choices about care

KNOWLEDGE

- Cultural norms and practices surrounding sexuality, sexual practices, marriage, the childbearing continuum, and parenting
- Principles of empowerment
- Methods of conveying health information to individuals, groups, communities

SKILLS & BEHAVIOURS

- Advocate for and support women to be the central decision makers in their care
- Assist women to identify their needs, knowledge, skills, feelings, and preferences throughout the course of care
- Provide information and anticipatory guidance about sexual and reproductive health to assist women's decision making
- Collaborate with women in developing a comprehensive plan of care that respects her preferences and decisions

1.h Demonstrate effective interpersonal communication with women and families, health care teams, and community groups

KNOWLEDGE

- Role and responsibilities of midwives and other maternal – infant health providers
- Principles of effective communication
- Principles of effectively working in health care teams
- Cultural practices and beliefs related to childbearing and reproductive health
- Principles of communication in crisis situations, e.g. grief and loss, emergencies

SKILLS & BEHAVIOURS

- Listen to others in an unbiased and empathetic manner
- Respect one others' point of view
- Promote the expression of diverse opinions and perspectives
- Use the preferred language of the woman or an interpreter to maximise communication
- Establish ethical and culturally-appropriate boundaries between professional and non-professional relationships
- Demonstrate cultural sensitivity to women, families, and communities
- Demonstrate sensitivity and empathy for bereaved women and family members
- Facilitate teamwork and inter-professional care with other care providers (including students) and community groups/ agencies
- Establish and maintain collaborative relationships with individuals, agencies, institutions that are part of referral networks
- Convey information accurately and clearly and respond to the needs of individuals



1.i Facilitate normal birth processes in institutional and community settings, including women's homes

KNOWLEDGE

- Normal biologic, psychologic, social, and cultural aspects of reproduction and early life
- Practices that facilitate and those that interfere with normal processes
- Policies and protocols about care of women in institutional and community settings
- Availability of resources in various settings
- Community views about and utilization of health care facilities and place(s) of birth

SKILLS & BEHAVIOURS

- Promote policies and a work culture that values normal birth processes
- Utilize human and clinical care resources to provide personalized care for women and their infants
- Provide continuity of care by midwives known to woman

1.j Assess the health status, screen for health risks, and promote general health and well-being of women and infants

KNOWLEDGE

- Health needs of women related to reproduction
- Health conditions that pose risks during reproduction
- Health needs of infants and common risks

SKILLS & BEHAVIOURS

- Conduct a comprehensive assessment of sexual and reproductive health needs
- Assess risk factors and at-risk behaviour
- Order, perform, and interpret laboratory and/or imaging screening tests
- Exhibit critical thinking and clinical reasoning informed by evidence when promoting health and well being
- Provide health information and advice tailored to individual circumstances of women and their families
- Collaborate with women to develop and implement a plan of care

1.k Prevent and treat common health problems related to reproduction and early life

KNOWLEDGE

- Common health problems related to sexuality and reproduction
- Common health problems and deviations from normal of newborn infants
- Treatment of common health problems
- Strategies to prevent and control the acquisition and transmission of environmental and communicable diseases

SKILLS & BEHAVIOURS

- Maintain/promote safe and hygienic conditions for women and infants
- Use universal precautions consistently
- Provide options to women for coping with and treating common health problems
- Use technology and interventions appropriately to promote health and prevent secondary complications
- Recognize when consultation or referral is indicated for managing identified health problems, including consultation with other midwives
- Include woman in decision-making about referral to other providers and services



1.1 Recognize conditions outside midwifery scope of practice and refer appropriately

KNOWLEDGE

- Complications/pathologic conditions related to health status
- Limits of midwifery scope of practice and own experience
- Available referral systems to access medical and other personnel to manage complications
- Community/facility plans and protocols for accessing resources in timely manner

SKILLS & BEHAVIOURS

- Maintain up-to-date knowledge, skills, and equipment for responding to emergency situations
- Recognize situations requiring expertise beyond midwifery care
- Maintain communication with women about nature of problem, actions taken, and referral if indicated
- Determine the need for immediate intervention and respond appropriately
- Implement timely and appropriate intervention, inter-professional consultation and/or timely referral taking account of local circumstances
- Provide accurate oral and written information to other care providers when referral is made.
- Collaborate with decision-making if possible and appropriate

1.m Care for women who experience physical and sexual violence and abuse

KNOWLEDGE

- Socio-cultural, behavioural, and economic conditions that often accompany violence and abuse
- Resources in community to assist women and children
- Risks of disclosure

SKILLS & BEHAVIOURS

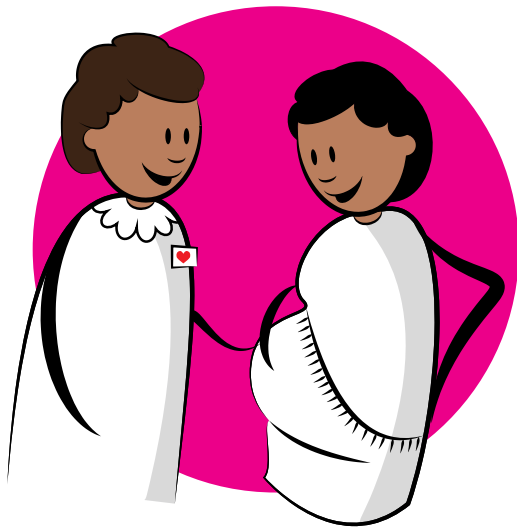
- Protect privacy and confidentiality
- Provide information to all women about sources of help regardless of whether there is disclosure about violence
- Inquire routinely about safety at home, at work
- Recognize potential signs of abuse from physical appearance, emotional affect, related risk behaviours such as substance abuse
- Provide special support for adolescents and victims of gender-based violence including rape
- Refer to community resources, assist in locating safe setting as needed



CATEGORY 2

PRE-PREGNANCY AND ANTENATAL

Competencies in this category are about health assessment of the woman and fetus, promotion of health and well-being, detection of complications during pregnancy, and care of women with an unexpected pregnancy.



2.a Provide pre-pregnancy care

KNOWLEDGE

- Anatomy and physiology of female and male related to reproduction and sexual development
- Socio-cultural aspects of human sexuality
- Evidence based screening for cancer of reproductive organs and other health problems such as diabetes, hypertension, thyroid conditions, and chronic infections that impact pregnancy

SKILLS & BEHAVIOURS

- Identify and assist in reducing barriers related to accessing and using sexual and reproductive health services
- Assess nutritional status, current immunization status, health behaviours such as smoking, existing medical conditions, and exposure to known teratogens
- Carry out screening procedures for sexually transmitted and other infections, HIV, cervical cancer
- Provide counseling about nutritional supplements such as folic acid, dietary intake, exercise, updating immunizations as needed, modifying risk behaviours, and prevention of sexually transmitted infections

2.b Determine health status of woman

KNOWLEDGE

- Physiology of menstrual and ovulatory cycle
- Components of a comprehensive health history including psycho-social responses to pregnancy and safety at home
- Components of complete physical exam
- Health conditions including infections and genetic conditions detected by screening blood and biologic samples

SKILLS & BEHAVIOURS

- Confirm pregnancy and estimate gestational age from history, physical exam, laboratory test and/or ultrasound
- Obtain comprehensive health history
- Perform a complete physical examination
- Obtain biologic samples for laboratory tests (e.g. venipuncture, finger puncture, urine samples, and vaginal swabs)
- Provide information about conditions that may be detected by screening
- Assess status of immunizations, and update as indicated
- Discuss findings and potential implications with woman and mutually determine plan of care

2.c Assess fetal well-being

KNOWLEDGE

- Placental physiology, embryology, fetal growth and development, and indicators of fetal well-being
- Evidence-based guidelines for use of ultrasound

SKILLS & BEHAVIOURS

- Assess fetal size, amniotic fluid volume, fetal position, activity, and heart rate from examination of maternal abdomen
- Determine whether there are indications for additional assessment/examination and refer accordingly
- Assess fetal movements and ask woman about fetal activity

2.d Monitor the progression of pregnancy

KNOWLEDGE

- Usual physiological and physical changes with advancing pregnancy
- Nutritional requirements of pregnancy
- Common psychological responses to pregnancy and symptoms of psychological distress
- Evidence informed antenatal care policies and guidelines, including frequency of antenatal visits

SKILLS & BEHAVIOURS

- Conduct assessments throughout pregnancy of woman's physical and psychological well-being, family relationships, and health education needs
- Provide information regarding normal pregnancy to woman, her partner, family members, or other support persons
- Suggest measures to cope with common discomforts of pregnancy
- Provide information (including written and/or pictorial) about danger signs, (e.g. vaginal bleeding, signs of preterm labour, prelabour, rupture of membranes) emergency preparedness, and when and where to seek help
- Review findings and revise plan of care with woman as pregnancy progresses

2.e Promote and support health behaviours that improve well being

KNOWLEDGE

- Impact of adverse social, environmental, and economic conditions on maternal -fetal health
- Effects of inadequate nutrition and heavy physical work
- Effects of tobacco use and exposure to second-hand smoke, use of alcohol and addictive drugs
- Effects of prescribed medications on fetus
- Community resources for income support, food access, and programs to minimize risks of substance abuse
- Strategies to prevent or reduce risks of mother-to-child disease transmission including infant feeding options for HIV infection
- Effects of gender-based violence, emotional abuse, and physical neglect

SKILLS & BEHAVIOURS

- Provide emotional support to women to encourage change in health behaviour
- Provide information to woman and family about impact on mother and fetus of risk conditions.
- Counsel women about and offer referral to appropriate persons or agencies for assistance and treatment
- Respect women's decisions about participating in treatments and programs
- Make recommendations and identify resources for smoking reduction/cessation in pregnancy



2.f Provide anticipatory guidance related to pregnancy, birth, breastfeeding, parenthood, and change in the family

KNOWLEDGE

- Needs of Individuals and families for different information at different times in their respective life cycles
- Methods of providing information to individuals and groups
- Methods of eliciting maternal feelings and expectations for self, infant, and family

SKILLS & BEHAVIOURS

- Participate in--and refer women and support persons to--childbirth education programs
- Convey information accurately and clearly and respond to needs of individuals
- Prepare the woman, partner, and family to recognize labour onset, when to seek care, and progress of labour
- Provide information about postpartum needs including contraception, care of newborn infants, and the importance of exclusive breast feeding for infant health
- Identify needs or problems requiring further expertise or referral such as excessive fear, and dysfunctional relationships

2.g Detect, manage, and refer women with complicated pregnancies

KNOWLEDGE

- Complications of early pregnancy such as threatened or actual miscarriage, and ectopic pregnancy
- Fetal compromise, growth restriction, malposition, preterm labour
- Signs and symptoms of maternal pathologic conditions such as pre-eclampsia, gestational diabetes, and other systemic illnesses
- Signs of acute emergencies such as hemorrhage, seizures, and sepsis

SKILLS & BEHAVIOURS

- Collaborate in care of or refer for treatment of complications
- Implement critical care activities to support vital body functions (e.g. intravenous (IV) fluids)
- Mobilize blood donors if necessary
- Transfer to higher level facility if needed

2.h Assist the woman and her family to plan for an appropriate place of birth

KNOWLEDGE

- Evidence about birth outcomes in different birthplace settings
- Availability of options in specific location; limitations of climate, geography, means of transport, and resources available in facilities
- Local policies and guidelines

SKILLS & BEHAVIOURS

- Discuss options, preferences and contingency plans with woman and support persons and respect their decision
- Provide information about preparing birth site if in community, e.g. travel and admission to facility
- Promote the availability of a full range of birth settings



2.i Provide care to women with unintended or mistimed pregnancy

KNOWLEDGE

- Complexity of decision-making about unintended or mistimed pregnancies
- Emergency contraception
- Legal options for induced abortion; eligibility and availability of medical and surgical abortion services
- Medications used to induce abortion; properties, effects, and side effects
- Risks of unsafe abortion
- Family planning methods appropriate for the post-abortion period.
- Care and support (physical and psychological) needed during and after abortion

SKILLS & BEHAVIOURS

- Confirm pregnancy and determine gestational age; refer for ultrasound if unknown gestation and/or symptoms of ectopic pregnancy
- Counsel woman about options to maintain or end the pregnancy and respect the ultimate decision.
- Provide supportive antenatal care if pregnancy continued; refer to agencies, and social services for support and assistance when needed
- Identify from obstetric, medical and social history, contraindications to medication or aspiration methods
- Provide information about legal regulations, eligibility, and access to abortion services
- Provide information about abortion procedures, potential complications, management of pain, and when to seek help
- Refer to provider of abortion services upon request
- Provide post-abortion care
 - Confirm expulsion of products of conception from history, ultrasound, or levels of HCG
 - Review options for contraception and initiate immediate use of method
 - Explore psychological response to abortion



CATEGORY 3

CARE DURING LABOUR AND BIRTH

Competencies in this category are about assessment and care of women during labour that facilitates physiological processes and a safe birth, the immediate care of the newborn infant, and detection of complications in mother or infant.



3.a Promote physiologic labour and birth

KNOWLEDGE

- Anatomy of maternal pelvis and fetus; mechanisms of labour for different fetal presentations
- Physiologic onset and progression of labour
- Evidence about interventions in normal labour and birth
- Cultural and social beliefs and traditions about birth
- Signs and behaviours of labour progress; factors that impede labour progress
- Methods of assessing fetus during labour

SKILLS & BEHAVIOURS

- Provide care for a woman in the birth setting of her choice, following policies and protocols
- Obtain relevant obstetric and medical history
- Perform and interpret focused physical examination of the woman and fetus
- Order and interpret laboratory tests if needed
- Assess woman's physical and behavioural responses to labour
- Provide information, support, and encouragement to woman and support persons throughout labour and birth
- Provide respectful one-to-one care
- Encourage freedom of movement and upright positions
- Provide nourishment and fluids
- Offer and support woman to use strategies for coping with labour pain, e.g. controlled breathing, water immersion, relaxation, massage, and pharmacologic modalities when needed
- Assess regularly parameters of maternal-fetal status, and e.g. vital signs, contractions, cervical changes, and fetal descent
- Use labour progress graphic display to record findings and assist in detecting labour delay or other complications
- Augment uterine contractility judiciously using non-pharmacological or pharmacological agents to prevent non-progressive labour
- Prevent unnecessary routine interventions, e.g. amniotomy, electronic fetal monitoring, directed closed glottis pushing

3.b Manage a safe spontaneous vaginal birth and prevent complications

KNOWLEDGE

- Methods of conducting birth to protect perineal integrity
- Evidence about conduct of third stage, including use of uterotonics
- Potential complications and their immediate treatment e.g. shoulder dystocia, and excessive bleeding
- Signs of placental separation; appearance of normal placenta, membranes, and umbilical cord
- Types of perineal and vaginal trauma requiring repair and suturing techniques

SKILLS & BEHAVIOURS

- Support the woman to give birth in her position of choice
- Ensure presence of clean necessary supplies and source of warmth
- Coach woman about pushing to control expulsion of presenting part, avoid routine episiotomy
- Undertake appropriate maneuvers and use maternal position to facilitate vertex, face, or breech birth
- Delay cord clamping
- Manage nuchal cord
- Assess immediate condition of newborn
- Provide skin to skin contact and warm environment
- Deliver placenta and membranes and inspect for completeness
- Assess uterine tone, maintain firm contraction, and estimate and record maternal blood loss
- Inspect vaginal and perineal areas for trauma, and repair as needed, following policies and protocols

3.c Provide care of the newborn immediately after birth

KNOWLEDGE

- Normal transition to extra-uterine environment
- Scoring systems to assess newborn status
- Signs indicating need for immediate actions to assist transition
- Appearance and behaviour of healthy newborn infant
- Method of assessing gestational age of newborn infant
- Needs of small for gestational age and low birth weight infants

SKILLS & BEHAVIOURS

- Use standardized method to assess newborn condition in the first minutes of life (Apgar or other); refer if needed
- Institute actions to support breathing and oxygenation
- Provide a safe warm environment for initiating breastfeeding and attachment (bonding) in the first hour of life
- Conduct a complete physical examination of newborn in presence of mother/family; explain findings and expected changes e.g. colour of extremities, moulding of head. Refer for abnormal findings.
- Institute newborn prophylaxis e.g. ophthalmic infection, and hemorrhagic disease, according to policies and guidelines
- Promote care by mother, frequent feeding and close observation
- Involve partner/support persons in providing newborn care



CATEGORY 4

ONGOING CARE OF WOMEN AND NEWBORNS

Competencies in this category address the continuing health assessment of mother and infant, health education, support for breast feeding, detection of complications, and provision of family planning services.



4.a Provide postnatal care for the healthy woman

KNOWLEDGE

- Physiological changes following birth, uterine involution, onset of lactation, healing of perineal-vaginal tissues
- Common discomforts of the postnatal period and comfort measures
- Need for rest, support, and nutrition to support lactation
- Psychological responses to mothering role, addition of infant to family

SKILLS & BEHAVIOURS

- Review history of pregnancy, labour, and birth
- Conduct a focused physical exam to assess breast changes and involution. Monitor blood loss and other body functions
- Assess mood and feelings about motherhood and demands of infant care
- Provide pain control strategies if needed for uterine contractions, and perineal trauma
- Provide information about self-care that enables mother to meet needs of newborn, e.g. adequate food, nutritional supplements, usual activities, rest periods, and household help
- Provide information about safe sex, family planning methods appropriate for the immediate postnatal period, and pregnancy spacing

4.b Provide care to healthy newborn infant

KNOWLEDGE

- Appearance and behaviour of infant in early life; cardio-respiratory changes related to adapting to extra-uterine life
- Growth and development in initial weeks and months of life
- Protocols for screening for metabolic conditions, infectious conditions, and congenital abnormalities
- Protocols/guidelines for immunizations in infancy
- Evidence-based information about infant circumcision; family values, beliefs, and cultural norms

SKILLS & BEHAVIOURS

- Examine infant at frequent intervals to monitor growth and developmental behaviour
- Distinguish normal variation in newborn appearance and behaviour from those indicating pathologic conditions
- Administer immunizations, carry out screening tests as indicated
- Provide information to parents about a safe environment for infant, frequent feeding, care of umbilical cord, voiding and stooling, and close physical contact

4.c Promote and support breastfeeding

KNOWLEDGE

- Physiology of lactation
- Nutritional needs of newborn infants, including low birth weight infants
- Social, psychological, and cultural aspects of breastfeeding
- Evidence about benefits of breastfeeding
- Indications and contraindications to use of drugs and substances during lactation
- Awareness of lactation aids

SKILLS & BEHAVIOURS

- Promote early and exclusive breastfeeding while respecting a woman's choice regarding newborn feeding
- Provide information about infant needs, frequency and duration of feedings, and weight gain
- Provide support and information about breastfeeding for a minimum of six months, including combining with work, maintaining milk supply, and storing breast milk
- Identify and manage breastfeeding problems (e.g. mastitis, low milk supply, engorgement, improper latch)
- Provide information to women breastfeeding multiple newborns
- Refer women to breastfeeding support as indicated
- Advocate for breastfeeding in family and community

4.d Detect and treat or refer postnatal complications in woman

KNOWLEDGE

- Signs and symptoms of:
 - conditions in the postnatal period that may respond to early intervention (e.g. sub-involution, anaemia, and urinary retention)
 - complications that need referral to more specialized provider or facility (e.g. hematoma, thrombophlebitis, sepsis, obstetric fistula, and incontinence)
 - life threatening complications requiring immediate response and specialized care (hemorrhage, amniotic fluid embolus, seizure, and stroke)
- Signs and symptoms of postnatal depression, anxiety, and psychosis
- Mourning process following perinatal death

SKILLS & BEHAVIOURS

- Provide information to woman and family about potential complications and when to seek help.
- Assess woman during postnatal period to detect signs and symptoms of complications
- Distinguish postnatal depression from transient anxiety about caring for baby, assess availability of help and support at home, and provide emotional support
- Provide counseling and follow-up care for women and family members who experience stillbirth, neonatal death, serious infant illness, and congenital conditions
- Provide first line measures to treat or stabilize identified conditions
- Arrange referral and/or transfer as needed



4.e Detect and manage health problems in newborn infant

KNOWLEDGE

- Congenital anomalies, and genetic conditions
- Needs of pre-term and low birth weight infants
- Symptoms and treatment of withdrawal from maternal drug use
- Prevention of mother-to-child transmission of infections such as HIV, hepatitis B and C
- Signs and symptoms of common health problems and their treatment

SKILLS & BEHAVIOURS

- Provide information to woman and family about potential complications and when to seek help.
- Assess woman during postnatal period to detect signs and symptoms of complications
- Distinguish postnatal depression from transient anxiety about caring for baby, assess availability of help and support at home, and provide emotional support
- Provide counseling and follow-up care for women and family members who experience stillbirth, neonatal death, serious infant illness, and congenital conditions
- Provide first line measures to treat or stabilize identified conditions
- Arrange referral and/or transfer as needed

4.f Provide family planning services

KNOWLEDGE

- Anatomy and physiology of female and male related to reproduction and sexual development
- Socio-cultural aspects of human sexuality
- Family planning methods including natural, barrier, hormonal, implantable; emergency contraception, sterilization; their possible side effects, risk of pregnancy, and contraindications to use
- Available written and pictorial resources for teaching about family planning methods
- Pregnancy options for HIV positive women or couples

SKILLS & BEHAVIOURS

- Provide and protect privacy and confidentiality for discussions about family planning knowledge, goals for limiting and/or spacing of children, and concerns and myths about methods
- Obtain relevant history of use of methods, medical conditions, socio-cultural values, and preferences that influence choice of method
- Provide information about how to use, effectiveness, and cost of various methods to support informed decision-making
- Provide methods according to scope of practice and protocols, or refer to another provider
- Provide follow-up assessment of use, satisfaction, and side-effects
- Refer for woman or partner for sterilization procedure

