



Established July 1, 2012

A CELEBRATION OF THE DEPARTMENTAL INAUGURATION

TABLE *of* CONTENTS

TRANSFORMING LIVES <i>for more than 70 years</i>	1
MESSAGE <i>from the</i> CHAIR	2
MESSAGE <i>from the</i> PROGRAM DIRECTOR	4
SEVEN DECADES <i>of</i> EXCELLENCE: <i>a history</i>	6
DIVISION CHIEFS	8
FOUNDING DEPARTMENT CHAIR	9
FULL-TIME FACULTY	10
VOLUNTEER, ADJUNCT, <i>and</i> AFFILIATED FACULTY	13
ENDOWED MUSGRAVE LECTURESHIP	16
ENDOWED VECCHIONE LECTURESHIP	17
PITT PLASTIC SURGERY ALUMNI	18
PITT PLASTIC SURGERY <i>through the years</i>	40

TRANSFORMING LIVES *for more than* **70** YEARS



WE ARE HERE BECAUSE OF A NEED AND A DESIRE
TO HELP SHAPE LIVES BEYOND OUR OWN.

UPON THIS MILESTONE OF TRANSFORMATION FROM DIVISION TO DEPARTMENT, WE COMMEMORATE THOSE WHO BUILT OUR FOUNDATION—THE FOREFATHERS WHO SET THE HIGH STANDARDS WE HAVE LIVED BY FOR MORE THAN 70 YEARS. OUR CONTINUED MISSION IS TO PROVIDE OUTSTANDING CLINICAL CARE, PERFORM INNOVATIVE RESEARCH, AND TRAIN FUTURE GENERATIONS OF LEADERS IN PLASTIC SURGERY. IT IS OUR GOAL—AS IT WAS STARTING IN THE 1940s—TO IMPROVE THE HUMAN CONDITION.

UNIVERSITY OF PITTSBURGH SCHOOL OF MEDICINE
DEPARTMENT OF PLASTIC SURGERY
ESTABLISHED JULY 1, 2012



The Division of Plastic Surgery at the University of Pittsburgh School of Medicine, a program with an incredibly rich history, is transitioning to a department. This landmark event is representative of the growth of plastic surgery as an independent discipline, both in scope of practice and educational process, as well as the prominent role that the University of Pittsburgh has played in advancing the frontiers of this specialty.

Since the 1940s when plastic surgeons first arrived at the University of Pittsburgh School of Medicine, four important pillars have strongly supported our efforts. These are excellent clinical care, service, education, and cutting-edge research. Our dedication to excellent clinical care over the years has helped patients to recover from traumatic injuries, congenital deformities, cancer, and a range of other disorders from head to toe. Importantly, Pitt plastic surgery faculty and graduates have been instrumental in developing new techniques and practices to advance the standards of care in plastic surgery across the globe.

Service is another hallmark of the University of Pittsburgh plastic surgery faculty, residents, and graduates. This includes service to our hospitals, with ready availability to help patients in need and to work collaboratively with our colleagues in many other specialties as we meet the reconstructive needs of their patients. This also includes service on committees in the School of Medicine and the hospitals, as well as service to our greater Pittsburgh community and our regional and national plastic surgery organizations. University of Pittsburgh plastic surgery faculty and graduates have a tradition of contribution to and leadership in organizations such as the American Society of Plastic Surgeons, the American Association of Plastic Surgeons, and the American Board of Plastic Surgery. In addition, Pitt plastic surgery faculty have held numerous editorial board positions for journals and textbooks. Another prominent area of service has been with international medical missions.

Education has been another important pillar of the University of Pittsburgh plastic surgery program. Since our first resident trained in the late 1940s,

we have been committed to training the next generation of leaders in plastic surgery. Our current residency training program is recognized for its innovative approach and outstanding curriculum.

The fourth pillar of Pitt plastic surgery is cutting-edge research. Our laboratories have focused on scientific exploration in all areas of plastic surgery and now tackle current challenges in wound healing, regenerative medicine, transplantation, and craniofacial biology. Our multidisciplinary teams, which include surgeon-scientists and basic researchers, always bear in mind that we can impact the practice of medicine through our work in the laboratory.

Tying these four pillars together are overriding themes of innovation, creativity, collaboration, and collegiality. Plastic surgery is an incredibly creative specialty, and our faculty and graduates have displayed these attributes while recognizing the importance of working closely with our colleagues in plastic surgery and other disciplines to enhance the sharing of ideas.

As we move forward with plastic surgery's mission to restore form and function throughout the body, the University of Pittsburgh Department of Plastic Surgery will maintain its steadfast commitment to these pillars of excellent clinical care, service, education, and cutting-edge research.

This is a very special event as we inaugurate the new Department of Plastic Surgery at the University of Pittsburgh. We welcome our alumni, colleagues, and friends to celebrate with us as Pitt Plastic Surgery moves into this exciting new stage of growth.

J. PETER RUBIN, MD

FOUNDING DEPARTMENT CHAIR
PROFESSOR OF PLASTIC SURGERY
UPMC ENDOWED CHAIR IN
PLASTIC SURGERY



It is wonderful to celebrate the inauguration of the Department of Plastic Surgery at the University of Pittsburgh. For departments of academic medicine and surgery, the educational mission of training future physicians and surgeons remains one of the primary responsibilities.

At the University of Pittsburgh, this residency tradition began in 1948. S. Milton Dupertuis, MD, the first division chief and program director, recruited John C. Gaisford, MD, as Pitt's first plastic surgery resident—at a salary of \$34 a month. The following year, Ross H. Musgrave, MD, became Pitt's second plastic surgery resident. These pioneers of the Pitt plastic surgery residency would lead the way of academic excellence, setting a precedent for what would become a tradition of training leaders in plastic surgery. Dupertuis; Musgrave; and William L. White, MD, would each serve as president of the American Society of Plastic and Reconstructive Surgeons, and, Dupertuis; Musgrave; and Dwight C. Hanna III, MD, all served as directors of the American Board of Plastic Surgery.

To date, there have been approximately 310 plastic surgery residents and fellows trained at Pitt, accounting for generations of leaders in our field. At last count, 22 alumni of Pitt's plastic surgery residency program have served at one time as division chiefs at nearly a quarter of the nation's 90 plastic surgery programs.

In 2008, we were given approval by the American Board of Plastic Surgery to establish one of the first "categorical plastic surgery training programs" in the United States. This innovative program is similar to other core surgical residencies and is uniquely designed to train and prepare plastic surgeons. As our goal is to produce surgeon-scientists, the curriculum includes a required year of basic science research in one of our three independently funded laboratories.

Our mission remains one of cultivating and nurturing future leaders; surgeon-scientists; and academic plastic surgeons who will become the next generation of program directors, chairs, and presidents of national societies.

**“OUR MISSION REMAINS
ONE OF CULTIVATING
AND NURTURING
FUTURE LEADERS;
SURGEON-SCIENTISTS;
AND ACADEMIC
PLASTIC SURGEONS
WHO WILL BECOME
THE NEXT GENERATION
OF PROGRAM
DIRECTORS, CHAIRS,
AND PRESIDENTS OF
NATIONAL SOCIETIES.”**

Today, our residency program consists of both an integrated and independent training pathway that is accredited for 27 full-time residents. Our citywide program benefits from a strong and positive “town and gown” participation and consists of seven hospital sites with 26 full-time faculty members and 28 volunteer, adjunct, and affiliated faculty members. We offer fellowship training in hand surgery, pediatric plastic/craniofacial surgery, body contouring surgery, and reconstructive microsurgery.

Congratulations, Pitt Plastic Surgery on departmental status and nearly 65 years of training leaders in American plastic surgery.

A handwritten signature in black ink, appearing to read 'J. Losee'.

JOSEPH E. LOSEE, MD
EXECUTIVE VICE CHAIR AND
PROGRAM DIRECTOR
PROFESSOR OF PLASTIC SURGERY

SEVEN DECADES *of* EXCELLENCE: *a history*

Compiled by Robert W. Bragdon, MD, Historian

1940–1952

Plastic surgery at the University of Pittsburgh began in the early 1940s with the arrival of S. Milton Dupertuis. Having just completed his training as Jerome Webster's first resident at Columbia University in New York City, Dupertuis was recruited to Children's Hospital of Pittsburgh (CHP) and Presbyterian University Hospital (PUH) to serve as their sole plastic surgeon. John C. Gaisford, assistant chief surgery resident at CHP and PUH, was assigned to assist Dupertuis. After several months of operating with Dupertuis and admiring his work, Gaisford asked Dupertuis if he would consider starting a plastic surgery program at the University of Pittsburgh. Dupertuis replied, "Nobody'd be interested in that. Nobody." Wishing to train under Dupertuis, Gaisford became Pitt's first plastic surgery resident, starting July 1, 1948, at a salary of \$34 a month.

William L. White came to the University from Philadelphia Naval Hospital to work with Dupertuis, who he had met in Valley Forge during World War II. Gaisford and White recruited Ross H. Musgrave as the second plastic surgery resident.

1952–1962

Musgrave came on board as staff and continued to recruit the very best candidates, such as Salvadore Castanares, Dwight C. Hanna III, Herb Lipshitz, Hank Shimuzu, Philip Antypas, and Robert Chase. The Pitt plastic surgery founding team of Dupertuis, White, Gaisford, Musgrave, Hanna, and James E. Conklin played a significant role in developing cleft lip and palate, head and neck, and hand surgery. Dupertuis died in 1959 at the age of 53 and at the pinnacle of his career, serving as chair of the American Board of Plastic Surgery (ABPS) and president of the American Society of Plastic and Reconstructive Surgeons. White became the second chair of the division, a position he would hold for 20 years.

Pitt Plastic Surgery Founding Fathers



1962–1972

White became chair of the Plastic Surgery Research Council (PSRC) and hosted the PSRC annual meeting in Pittsburgh in 1962. The program continued to flourish, attracting excellent surgeons such as Garry Brody; George Richardson; Timothy Miller; and Libby Wilson, who was also the program's first female doctor. Gaisford, Hanna, and Richardson left PUH for Allegheny General Hospital (AGH), where they practiced for two years before moving to West Penn Hospital and establishing a second plastic surgery residency program in 1967.

1972–1982

J. William Futrell became the division's third chief and first full-time professor. He recruited William M. Swartz, who brought his experience in hand and microvascular surgery from Brown University. The program's headquarters moved from White's office at 3500 Fifth Avenue to Scaife Hall. Skin grafting and random flaps evolved into the use of myocutaneous flaps. A replantation program was created. Gaisford established the burn unit at West Penn.

1982–1992

In 1982, Frederick R. Heckler came to AGH from Mississippi to start a private practice and work with the trauma service, later joined by Michael White, upon his graduation from the Pitt Plastic Surgery Residency. In 1983, Hanna and Futrell consolidated the West Penn and Pitt plastic surgery training programs. At that time, Hanna was chair of ABPS and was determined to take the total number of residents from six to five to reduce the competition in the market.

Pitt Plastic Surgery Current Faculty



2002–2012

Under Lee, research became a major focus. Research on immunosuppression and CTA became an established line of investigation. Kacey G. Marra joined the faculty as laboratory director and brought new expertise in tissue engineering. Stem cell research, especially adipose-derived stem cells, was strongly emphasized in laboratory studies and clinical trials. Pitt plastic surgery was noted for performing the nation's first bilateral hand transplant, above-the-elbow transplant, and first female hand transplant. Joseph E. Losee came to Pitt from Rochester to serve as director of the pediatric and craniofacial plastic surgery program at CHP. He established the Cleft-Craniofacial Center within the Division of Plastic Surgery. Under his direction, the pediatric plastic surgery section grew to six full-time faculty members at the new Children's Hospital of Pittsburgh of UPMC. Losee was also named director of the residency program, which he expanded into one of the largest independent and integrated plastic surgery residencies in the country. J. Peter Rubin, who followed Lee to Pitt, developed nationally recognized programs in body contouring and stem cell research. He hosted the 2009 PSRC annual meeting, marking the third time the event was held in Pittsburgh, a feat rarely accomplished by any institution. Rubin was instrumental in creating the body contouring fellowship and the UPMC Life After Weight Loss program. Shestak and Rubin founded the UPMC Aesthetic Plastic Surgery Center. The faculty expanded with the arrival of Carolyn De La Cruz, Michael L. Gimbel, Vu T. Nguyen (associate program director), and many other talented surgeons.

July 1, 2012

The University of Pittsburgh Division of Plastic Surgery earns departmental status under the leadership of Rubin as chair and Losee as executive vice chair and program director.

Microvascular surgery expanded with the arrival of E. Douglas Newton, and breast reconstruction using muscle flaps and tissue expansion became standards of care. Kenneth C. Shestak, a graduate of the Pitt residency program, joined the faculty. Pitt plastic surgery took on a citywide presence, with a strong "town and gown" collegial interaction. Resident experience expanded with the creation of weekly grand rounds for all citywide faculty. The pediatric plastic surgery program expanded when Wolfgang Losken came to Pittsburgh, bringing craniofacial reconstruction and research to Children's Hospital with a gentle hand. Regenerative medicine and tissue engineering became hot research topics.

1992–2002

James M. Russavage joined the faculty after completing his training at Pitt in 1993. In 1997, Ernest K. Manders came to Pitt from the Hershey Medical Center, bringing to the trauma service a great wealth of experience in scalp reconstruction, tissue expansion, and major reconstruction. Peter C. Johnson hosted the PSRC annual meeting in Pittsburgh in 1999. Pioneering work in adipose stem cell biology was championed by Futrell. In the new millennium, Shestak became interim chief until the arrival of W. P. Andrew Lee, who became the fourth full-time division chief. Lee brought his lab group with him, strengthened the hand fellowship, and enhanced collaborations with orthopaedic hand surgeons. He developed an internationally recognized Composite Tissue Allotransplantation (CTA) program. During this decade, volunteer clinical faculty continued to convert to full-time faculty based out of Scaife Hall.



S. MILTON DUPERTUIS, MD
PROFESSOR, CHIEF
(1940–1959)



WILLIAM L. WHITE, MD
PROFESSOR, CHIEF
(1959–1979)



J. WILLIAM FUTRELL, MD
PROFESSOR, CHIEF
(1979–2000)



KENNETH C. SHESTAK, MD
PROFESSOR, INTERIM CHIEF
(2000–2002)



W. P. ANDREW LEE, MD
PROFESSOR, CHIEF
(2002–2010)



J. PETER RUBIN, MD
PROFESSOR, CHIEF
(2011–2012)



“THIS IMPORTANT MILESTONE
RECOGNIZES A LONGSTANDING
TRADITION OF EXCELLENCE IN
CLINICAL CARE, INNOVATIVE
RESEARCH, SERVICE, AND
EDUCATION. WE WELCOME OUR
ALUMNI, COLLEAGUES, AND
FRIENDS TO CELEBRATE WITH
US AS PITT PLASTIC SURGERY
MOVES INTO THIS EXCITING
NEW STAGE OF GROWTH.”

J. PETER RUBIN, MD
FOUNDING DEPARTMENT CHAIR
PROFESSOR OF PLASTIC SURGERY
UPMC ENDOWED CHAIR IN
PLASTIC SURGERY
(2012–PRESENT)

FULL-TIME FACULTY



J. PETER RUBIN, MD
FOUNDING
DEPARTMENT CHAIR
PROFESSOR



SPENCER A.
BROWN, PHD
PROFESSOR



ERNEST K.
MANDERS, MD
PROFESSOR



KENNETH C.
SHESTAK, MD
PROFESSOR



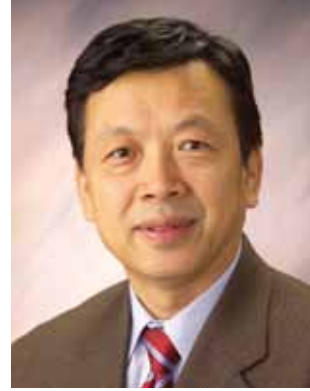
SANDEEP KATHJU,
MD, PHD
ASSOCIATE PROFESSOR



KACEY G.
MARRA, PHD
ASSOCIATE PROFESSOR



RONIT
WOLLSTEIN, MD
ASSOCIATE PROFESSOR



XIN XIAO
ZHENG, MD
ASSOCIATE PROFESSOR



GREGORY M.
COOPER, PHD
ASSISTANT PROFESSOR



JOSEPH E. LOSEE, MD
EXECUTIVE VICE CHAIR
AND PROGRAM DIRECTOR
PROFESSOR



T. OGUZ
ACARTURK, MD
ASSOCIATE PROFESSOR



VIJAY S. GORANTLA,
MD, PHD
ASSOCIATE PROFESSOR



JEFFREY A.
GUSENOFF, MD
ASSOCIATE PROFESSOR



ALEXANDER J.
DAVIT III, MD
ASSISTANT PROFESSOR



CAROLYN
DE LA CRUZ, MD
ASSISTANT PROFESSOR



MICHAEL L.
GIMBEL, MD
ASSISTANT PROFESSOR



LORELEI J.
GRUNWALDT, MD
ASSISTANT PROFESSOR



ANAND R.
KUMAR, MD
ASSISTANT PROFESSOR



VU T. NGUYEN, MD
ASSISTANT PROFESSOR



JAMES M. RUSSAVAGE,
DMD, MD
CLINICAL ASSISTANT
PROFESSOR



LATHA SATISH,
MSC, MPHIL, PHD
RESEARCH ASSISTANT
PROFESSOR



LINDSAY A. SCHUSTER,
DMD, MDS
CLINICAL ASSISTANT
PROFESSOR



MARIO G.
SOLARI, MD
ASSISTANT PROFESSOR
INCOMING



MARSHALL L.
BALK, MD



LCDR PATRICK L.
BASILE, MD



ROBERT W.
BRAGDON, MD



GERALD
BRANDACHER, MD



LANCE M.
BRUNTON, MD



ALEXANDER M.
SPIESS, MD
ASSISTANT PROFESSOR



DAWN J.
WANG, MD
ASSISTANT PROFESSOR



KIA MCLEAN
WASHINGTON, MD
ASSISTANT PROFESSOR
INCOMING



MATTHEW D. FORD,
MS, CCC-SLP
CLINICAL INSTRUCTOR



BRIAN J.
PHILLIPS, PHD
RESEARCH
INSTRUCTOR



GLENN A.
BUTERBAUGH, MD



RAYMOND A.
CAPONE, MD



JULIO A.
CLAVIJO-ALVAREZ,
MD, PHD, MPH
INCOMING



SYDNEY R.
COLEMAN, MD



J. WILLIAM
FUTRELL, MD

VOLUNTEER, ADJUNCT, *and* AFFILIATED FACULTY



AARON G. GRAND, MD



ROBERT R. HAGAN, MD



WILLIAM C. HAGBERG, MD



FREDERICK R. HECKLER, MD



CAPT ROBERT E. HERSH, MD



LTC BARRY D. MARTIN, MD



LEO R. MCCAFFERTY, MD



E. DOUGLAS NEWTON, MD



SUZAN K. OBAGI, MD



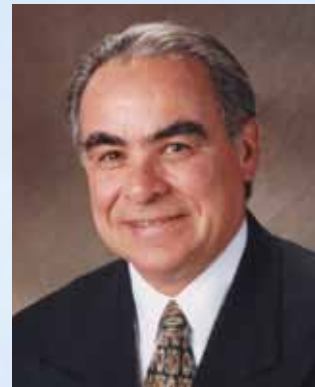
JAIMIE T. SHORES, MD



CDR ROBERT T. HOWARD, MD



DENNIS J. HURWITZ, MD



JOSEPH E. IMBRIGLIA, MD



ROBERT A. KAUFMANN, MD



W. P. ANDREW LEE, MD



GUY M. STOFMAN, MD



WILLIAM M. SWARTZ, MD

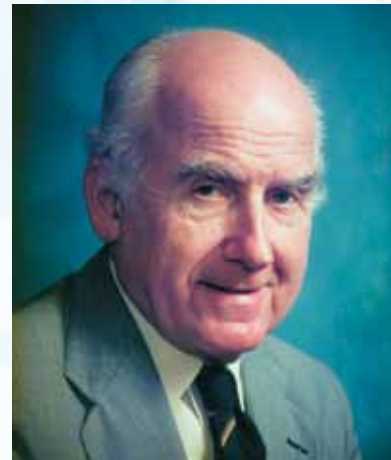


IAN L. VALERIO, MD, MS, MBA



MICHAEL J. WHITE, MD

ENDOWED MUSGRAVE LECTURESHIP



ROSS H. MUSGRAVE

After receiving his medical degree from the University of Pittsburgh School of Medicine (Alpha Omega Alpha) at age 22 in 1943, Ross H. Musgrave, MD, completed a nine-month residency in general surgery at Presbyterian Hospital before traveling to Japan in the service of the United States Army Medical Corps. There, as head of orthopaedics at the 172 Station Hospital, he saw more than 1,300 fractures in 13 months. When his stint in the military ended, Musgrave returned to the United States and spent a year doing graduate work in surgery at the University of Pennsylvania. He found what would be his life's work when he returned to Pittsburgh and began a rotation in plastic surgery. Appointed clinical professor of surgery (plastic) in 1965 at the University of Pittsburgh, Musgrave maintained an active practice until 1990. In addition to publishing widely, his many visiting professorships, from Toronto to Guadalajara, gave him the opportunity to teach and learn at many of the world's most respected institutions. From 1975 to 1981, he was a trustee of the University of Pittsburgh. He also served six years as a governor of the American College of Surgeons. During his six-year term on the Examining Board for Plastic Surgery, he chaired the residency review committee for four years.

Musgrave has been active in many professional organizations and has been honored numerous times. Perhaps the honor of which he is most proud is the

Philip S. Hench Distinguished Alumnus Award from the Pitt Medical Alumni Association, given to him in 1979. He also is very pleased to have been elected president of the American Society of Plastic Surgeons as well as the American Cleft Palate-Craniofacial Association. He is a trustee emeritus of UPMC and a trustee of his alma mater, Westminster College, which in 1979 awarded him an honorary doctorate.

In 1990, Musgrave became the executive director of the University of Pittsburgh Medical Alumni Association. In February 2000, he received the University of Pittsburgh Distinguished Alumni Fellow Award. Following his retirement in December 2002, he was named executive director emeritus of the Medical Alumni Association as well as Distinguished Clinical Professor of Surgery. In October 2004, the University dedicated a Scaife Hall classroom, the Musgrave Room, in his honor.

Musgrave has had a fairly extensive theater hobby, writing, directing, and acting in numerous productions. He was the first faculty advisor for the senior medical school musical society (Scope and Scalpel), starting with *PMS IV* in 1955. Overall, he helped to mentor the first nine Scope and Scalpel productions.

He and his beloved wife, Norma Jane, have been married for 65 years. In August 2011, Musgrave celebrated his 90th birthday.

ENDOWED VECCHIONE LECTURESHIP



LISA VECCHIONE

Lisa Vecchione, DMD, MDS, was born in Warren, Ohio, on October 19, 1966. She graduated from John F. Kennedy High School in 1985 and, because of her artistic talents, won a scholarship to the Rochester Institute of Technology. She graduated from RIT in 1989 with a bachelor's degree in medical illustration and went on to attend the University of Pittsburgh at Bradford, graduating in 1993 with a bachelor's degree in chemistry. In 2000, she graduated summa cum laude from the University of Pittsburgh School of Dental Medicine with a Doctor of Dental Medicine degree. She went on to earn a Master of Dental Science in 2003 at the University of Pittsburgh School of Dental Medicine.

In 2004, following a fellowship in craniofacial orthodontics at New York University, she was recruited to the Division of Pediatric Plastic Surgery and the Cleft-Craniofacial Center at Children's Hospital of Pittsburgh of UPMC. Vecchione served as the first director of orthodontics and assistant clinical professor of surgery (plastic surgery) at the University of Pittsburgh School of Medicine.

Vecchione's practice focused on providing care for children born with cleft and craniofacial anomalies. She developed a hospital-based orthodontic program providing services such as presurgical infant orthopaedics and naso-alveolar molding, ear molding, and surgical planning of facial osteotomies and distraction osteogenesis.

On August 7, 2011, at 44 years old, Vecchione was prematurely taken from us in a tragic motor vehicle accident, leaving hundreds of patients, colleagues, and friends with an unfillable void.

In addition to Vecchione's passion for children, her life was full of love for animals, and she found enjoyment in riding horses. Her passion for animals was most evidenced by her love for Diesel, her Saint Bernard, who died with her.



The Lisa Vecchione, DMD, MDS, Lecture is an annual event that memorializes her commitment and dedication to children with cleft and craniofacial anomalies. This memorial lectureship was established by donations from grateful patients, colleagues, family, and friends and endowed through a generous commitment from Vecchione's Aunt Sunny.

The lectureship is a permanent and fitting memorial to celebrate Vecchione's life and gifts—and to honor the memory of her dedication and commitment to the care of children with facial differences.

PITT PLASTIC SURGERY ALUMNI



JOHN
GAISFORD, MD
RESIDENT
(1948-1950)



ROSS H.
MUSGRAVE, MD
RESIDENT
(1949-1951)



KIRK W.
TODD, MD
RESIDENT
(1950-1951)



SALVADORE
CASTANARES, MD
RESIDENT
(1951-1952)



HERB
LIPSHITZ, MD
RESIDENT
(1951-1953)



NICK AZZATO, MD
RESIDENT
(1952-1954)



DWIGHT C.
HANNA, MD
RESIDENT
(1952-1954)



H. LEROY
RICHARDS, MD
RESIDENT
(1956-1958)



ROBERT A.
CHASE, MD
RESIDENT
(1957-1959)



A.M.P. JANSSEN
DELIMPENS, MD
RESIDENT
(1957-1959)



RICHARD P.
JOBE, MD
RESIDENT
(1956-1958)



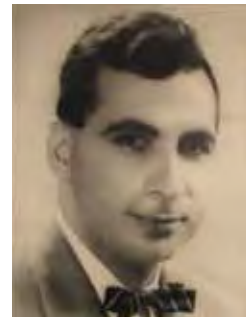
JOHN L.
TERRY, MD
RESIDENT
(1957-1959)



STANLEY
JAFFE, MD
RESIDENT
(1958-1960)



WALTER M.
RYAN, MD
RESIDENT
(1958-1960)



PHILIP
ANTYPAS, MD
RESIDENT
(1953-1955)



G. WILLIAM
LEWORTHY, MD
RESIDENT
(1953-1955)



BERNIE
BARNEY, MD
RESIDENT
(1955-1956)



LAWRENCE T.
MOORE, MD
RESIDENT
(1954-1956)



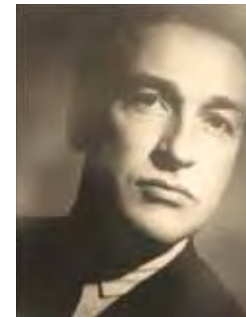
FREDERIC
RUECKERT, MD
RESIDENT
(1954-1956)



JAMES E.
CONKLIN, MD
RESIDENT
(1955-1957)



RICHARD W.
ZIMMERMAN, MD
RESIDENT
(1955-1957)



VINCENT
PORTER, MD
RESIDENT
(1959-1961)



OLIVER J.
THOMS, MD
RESIDENT
(1959-1961)



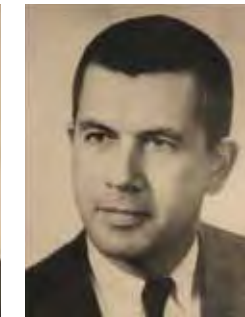
ISADORE
KAPLAN, MD
RESIDENT
(1960-1962)



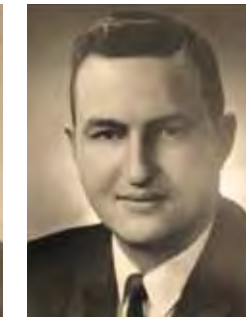
HENRY
SHIMUZU, MD
RESIDENT
(1960-1962)



ROBERT M.
GOLDWYN, MD
RESIDENT
(1961-1963)



BYRON
HARDIN, MD
RESIDENT
(1961-1963)

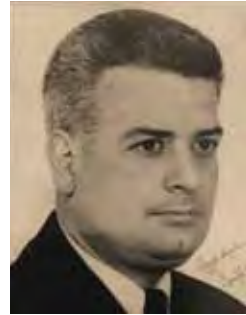


DONALD L.
LAMB, MD
RESIDENT
(1961-1963)

PITT PLASTIC SURGERY ALUMNI



GARRY S. BRODY, MD
FELLOW (1962)
RESIDENT (1962-1964)



JOSEPH H. NAUD, MD
RESIDENT (1962-1964)



GEORGE S. RICHARDSON, MD
RESIDENT (1962-1964)



JAMES H. FLEMING JR., MD
RESIDENT (1963-1965)



GEORGE R. WALKER JR., MD
RESIDENT (1963-1965)



HANS RICHARD WILHEMSEN, DDS, MD
RESIDENT (1963-1965)



PRATEEP BHOKAKUL, MD
RESIDENT (1965-1966)



HENRY A. BAER, MD
RESIDENT (1967-1969)



YOUNG HO LEE, MD
RESIDENT (1967-1969)



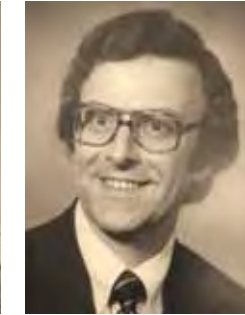
WALLACE H. CHANG, MD
RESIDENT (1968-1970)



JAMES A. LEHMAN JR., MD
RESIDENT (1968-1970)



LIBBY F. WILSON, MD
RESIDENT (1968-1970)



ROBERT W. CROW, MD
RESIDENT (1969-1971)



KHALID RASHID SOLEJA, MD
RESIDENT (1969-1971)



KENNETH R. DORNIER, MD
RESIDENT (1964-1966)



VICTOR HAY-ROE, MD
RESIDENT (1964-1966)



HIROSHI WASHIO, MD
RESIDENT (1964-1966)



JAMES R. CALLISON, MD
RESIDENT (1965-1967)



HOWARD STURIM, MD
RESIDENT (1965-1967)



EDWARD SHADID, MD
RESIDENT (1966-1968)



MELVIN J. STURMAN, MD
RESIDENT (1966-1968)



N. DEVI PRASAD TANTRI, MD
RESIDENT (1969-1971)



TIMOTHY A. MILLER, MD
RESIDENT (1970-1972)



P. TAKIS PATIKAS, MD
RESIDENT (1970-1972)



RICHARD J. SKRENTA, MD
RESIDENT (1970-1972)



KATSUJI KUBO, MD
RESIDENT (1971-1973)



MICHAEL B. LEWIS, MD
RESIDENT (1971-1973)



JOHN B. SLAYBACK, MD
RESIDENT (1971-1973)

PITT PLASTIC SURGERY ALUMNI



SHUJAUT ALI
KHAN, MD
RESIDENT
(1972-1974)



JOHN G.
PENN, MD
RESIDENT
(1972-1974)



STEPHEN A.
BROWN, MD
RESIDENT
(1973-1975)



JOSEPH L.
SAMPSON, MD
RESIDENT
(1973-1975)



BURTON
WEBER, MD
RESIDENT
(1973-1975)



STEPHEN C.
LESAUVAGE, MD
RESIDENT
(1974-1976)



RONALD J.
NORTH, MD
RESIDENT
(1974-1976)



NORMAN Y.
SOGIOKA, MD
RESIDENT
(1977-1979)



MICHAEL F.
HYNES, MD
RESIDENT
(1978-1980)



JOHN W.
LANG, MD
RESIDENT
(1978-1980)
FELLOW
(1980)



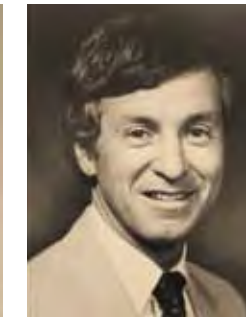
THOMAS F.
MITTS, MD
RESIDENT
(1978-1980)



SALEH
SHENAQ, MD
RESIDENT
(1979-1981)



CHULL
HONG, MD
FELLOW
(1980-1981)



J. BARRY
BOYD, MD
RESIDENT
(1980-1982)



DENNIS J.
HURWITZ, MD
RESIDENT
(1975-1977)



ROBERT P.
MCCUNE, MD
RESIDENT
(1975-1977)



JOHN J.
BERGEMEYER, MD
RESIDENT
(1976-1978)



J. BENJAMIN
HUGO, MD
RESIDENT
(1976-1978)



RICHARD G.
KATZ, MD
RESIDENT
(1976-1978)



DENIS
FRANKS, MD
RESIDENT
(1977-1979)



ROBERT S.
HAMAS, MD
RESIDENT
(1977-1979)



GUY M.
NARDELLA JR., MD
RESIDENT
(1980-1982)



JOSEPH M.
RABSON, MD
FELLOW
(1980-1981)
RESIDENT
(1981-1983)



SAI S.
RAMASASTRY, MD
RESIDENT
(1980-1982)
FELLOW
(1982-1983)



WILLIAM
FRITZ, MD
FELLOW
(1981-1982)



RAYMOND A.
CAPONE JR., MD
RESIDENT
(1981-1983)



JOHN J.
EDNEY, MD
RESIDENT
(1982-1983)
FELLOW
(1983)



CECIL J.
FOLMAR, MD
RESIDENT
(1982-1983)

PITT PLASTIC SURGERY ALUMNI



SAIED TALAIE, MD
RESIDENT
(1981-1983)



PAUL C. ZWIEBEL,
DMD, MD
RESIDENT
(1981-1983)



RICHARD
SHERWOOD, MD
RESIDENT
(1982-1983)



CLAUDE N.
FRECHETTE, MD
RESIDENT
(1982-1984)



MARK
GRANICK, MD
RESIDENT
(1982-1984)



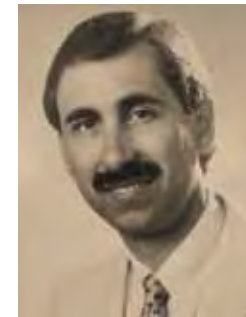
OSCAR M.
RAMIREZ, MD
RESIDENT
(1982-1984)



ENRIQUE A.
SILBERBLATT, MD
RESIDENT
(1982-1984)



LORI CHERUP, MD
FELLOW
(1985-1986)



ROBERT A.
HARDESTY, MD
RESIDENT
(1984-1986)



LAWRENCE
KORPECK, MD
RESIDENT
(1984-1986)



MARC D.
LIANG, MD
RESIDENT
(1984-1986)



ANDREW G.
ROTH, MD
RESIDENT
(1984-1986)



LARRY
WEINSTEIN, MD
FELLOW
(1985-1986)



KRISHNA
NARAYANAN, MD
FELLOW
(1985-1986)



MICHAEL F.
ANGEL, MD
FELLOW
(1983-1985)



STEVEN A.
BELINKIE, MD
RESIDENT
(1983-1985)



GEOFFREY L.
ROBB, MD
RESIDENT
(1983-1985)
FELLOW
(1985-1986)



KENNETH C.
SHESTAK, MD
RESIDENT
(1983-1985)
FELLOW
(1985-1986)



WILLIAM
CONKLIN, MD
RESIDENT
(1983-1985)



STEPHEN A.
GOLDSTEIN, MD
FELLOW
(1984-1985)



EDWARD
LANIGAN, MD
FELLOW
(1984-1985)



G. BJORN
STARK, MD
FELLOW
(1985-1986)



GREGORY O.
DICK, MD
RESIDENT
(1985-1987)



DAVID G. FITZ, MD
RESIDENT
(1985-1987)



ANTHONY C.
SANK, MD
RESIDENT
(1985-1987)



MARK A.
SCHUSTERMAN, MD
RESIDENT
(1985-1987)
FELLOW
(1987-1988)



SANG HEON
LEE, MD
FELLOW
(1985-1987)



Z. PAUL
LORENC, MD
FELLOW
(1986-1987)

PITT PLASTIC SURGERY ALUMNI



NORBERT L. MING, MD
FELLOW
(1986-1987)



JEFFERSON U. DAVIS, DDS, MD
RESIDENT
(1986-1988)



PAUL D. FISCHER, MD
RESIDENT
(1986-1988)
FELLOW
(1988-1989)



J. SAMUEL MITCHENER III, MD, PHD
RESIDENT
(1986-1988)



MICHAEL J. WHITE, MD
RESIDENT
(1986-1988)



NORMAN WEINZWEIG, MD
FELLOW
(1988)



MICHAEL H. CARSTENS, MD
RESIDENT
(1987-1989)
FELLOW
(1989-1990)



RICHARD J. GRECO, MD
RESIDENT
(1988-1990)



DOUGLAS L. HENDRICKS, MD
FELLOW
(1987-1988)
RESIDENT
(1988-1990)



HAVEN J. BARLOW, MD
FELLOW
(1989-1990)



HUSSAIN A. FADAAK, MD
FELLOW
(1990)



WEI JING WU, MD
FELLOW
(1989-1990)



SERGIO VIEIRA, MD
FELLOW
(1988-1990)



ROBERT A. HEIN, MD
RESIDENT
(1989-1991)



PETER C. JOHNSON, MD
RESIDENT
(1987-1989)



JAMES K. SMITH, MD
RESIDENT
(1987-1989)



KAREN E. WELLS, MD
RESIDENT
(1987-1989)



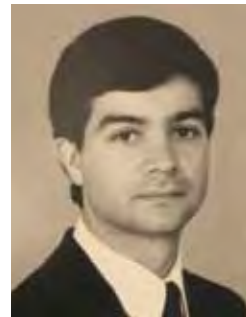
PATRICIA EADIE, MD
FELLOW
(1989)



KYEONG HEE KIM, MD
FELLOW
(1988-1989)



CHRISTINA AHN, MD
RESIDENT
(1988-1990)



HOWARD EDINGTON, MD
RESIDENT
(1988-1990)



RONALD R. HOLLINS, DMD, MD
RESIDENT
(1989-1991)



TIMOTHY R. JONES, MD
FELLOW
(1988-1989)
RESIDENT
(1989-1991)



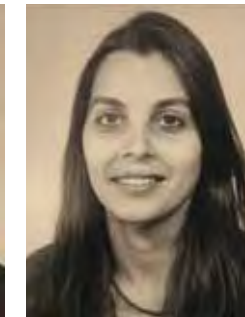
GUY M. STOFMAN, MD
RESIDENT
(1989-1991)



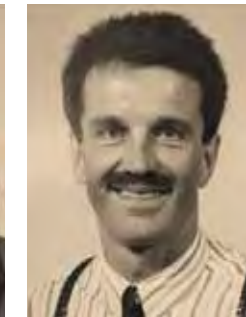
MOZART M.P. CAMPOS, MD
FELLOW
(1991)



ARTHUR J. DEBAISE, MD
FELLOW
(1990-1991)



CANTIDIA LITVIN, MD
FELLOW
(1990-1991)



STAN MONSTREY, MD
FELLOW
(1989-1991)

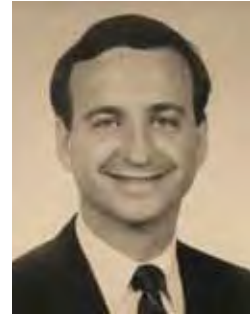
PITT PLASTIC SURGERY ALUMNI



BEHZAD
PARVA, MD
FELLOW
(1990-1991)



ALEXANDER
TSCHAKALOFF, MD
FELLOW
(1990-1991)



MICHAEL L.
BENTZ, MD
RESIDENT
(1990-1992)



PETER J.
MCKENNA, MD
RESIDENT
(1990-1992)



JOSEPH S.
NAWROCKI,
MD, DMD
RESIDENT
(1986-1992)



MICHAEL J.
WHEATLEY, MD
RESIDENT
(1990-1992)



WILLIAM A.
WOODEN, MD
RESIDENT
(1990-1992)



JAMES M.
RUSSAVAGE, MD
RESIDENT
(1991-1993)



TIMOTHY M.
WHITNEY, MD
RESIDENT
(1991-1993)



ROLF
BUTTEMEYER, MD
FELLOW
(1992-1993)



ANDREW C.
FRIEDMAN, MD
FELLOW
(1992-1993)



MICHAEL L.
GERBER, MD
FELLOW
(1992-1993)



SPIROS A.
LAZAROU, MD
FELLOW
(1992-1993)



DOMINGO
MALAVE, DMD
FELLOW
(1991-1993)



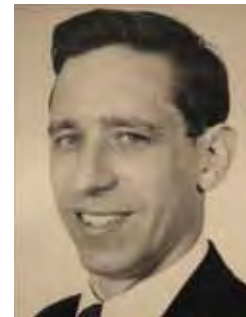
APIRAG
CHUANGSUWANICH,
MD
FELLOW
(1991-1992)



WILLIAM M.
KUZON, MD
FELLOW
(1992)



JANICE F.
LALIKOS, MD
FELLOW
(1991-1992)



JOSEPH
MINARCHEK, MD
FELLOW
(1991-1992)



MIN ZHAO, MD
FELLOW
(1991-1992)



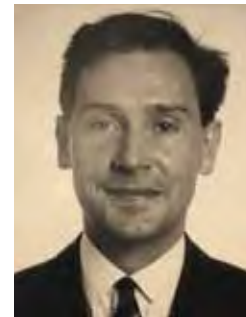
LUKE J.
CURTSINGER, MD
RESIDENT
(1991-1993)



RICHARD J.
RESTIFO, MD
RESIDENT
(1991-1993)



KIRILL P.
PSHENISNOV, MD
FELLOW
(1993)



WILLIAM H.
DASCOMBE, MD
FELLOW
(1991-1992)
RESIDENT
(1992-1994)



J. LYNNE
GARRISON, MD
RESIDENT
(1992-1994)
FELLOW
(1994-1995)



JAIME R. GARZA,
MD, DDS
RESIDENT
(1992-1994)



MICHAEL
HOPKINS, MD
RESIDENT
(1992-1994)
FELLOW
(1994-1995)



SCOTT E.
ANDOCHICK,
MD, DDS
FELLOW
(1993-1994)



KENAN
ATABAY, MD
FELLOW
(1992-1994)

PITT PLASTIC SURGERY ALUMNI



AHMAD
HUSSEIN, MD
FELLOW
(1992-1994)



HOMAYOUN
SASSON, MD
FELLOW
(1993-1994)



STEVEN
BERNARD, MD
RESIDENT
(1993-1995)
FELLOW
(1995-1996)



GREGORY
DUMANIAN, MD
FELLOW
(1992-1993)
RESIDENT
(1993-1995)



JAMES LOVETT, MD
FELLOW
(1992-1993)
RESIDENT
(1993-1995)



BRUCE MAST, MD
RESIDENT
(1993-1995)



TIMOTHY
COOPER, MD
FELLOW
(1994-1995)



DEANNA
ARMSTRONG, MD
RESIDENT
(1994-1996)



ERIC J. ASHBY, MD
RESIDENT
(1995-1996)



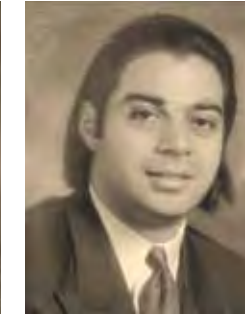
SCOTT D.
CHAPIN, MD
RESIDENT
(1994-1996)



BRAM R.
KAUFMAN, MD
RESIDENT
(1994-1996)
FELLOW
(1996-1997)



CHARLES D.
LONG, MD
RESIDENT
(1994-1996)



JOHN K.
ALEXANDRIDES, MD
FELLOW
(1995-1996)



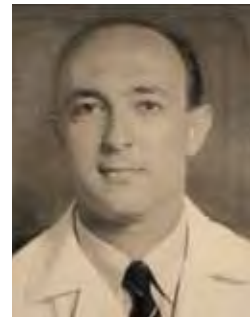
YOON KYU
CHUNG, MD
FELLOW
(1995-1996)



MARIA F.T.
GUIMARAES, MD
FELLOW
(1995)



KENNETH ODINET,
MD, DMD
FELLOW
(1995)



THEMIS
SEMERGIDIS,
MD, DMD
FELLOW
(1994-1995)



VIRENDER
SINGHAL, MD
FELLOW
(1994-1995)



KLAUS
WALGENBACH, MD
FELLOW
(1993-1995)



SOHEIL SEAN
YOUNAI, MD
FELLOW
(1994-1995)



ROMAN
ZALDIVAR, MD
FELLOW
(1993-1995)



JON M.
GRAZER, MD
FELLOW
(1995-1996)



CHRISTOPH
HOHNKE, MD
FELLOW
(1993-1996)



KAPSUNG OH, MD
FELLOW
(1995-1996)



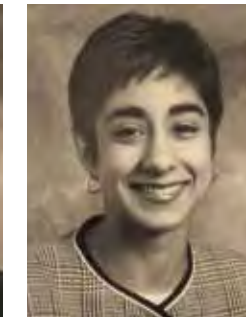
ELSA D.
RASKIN, MD
FELLOW
(1996)



PERRY J.
JOHNSON, MD
RESIDENT
(1995-1997)



JOSEF ZOLDOS,
DDS, MD
RESIDENT
(1995-1997)
FELLOW
(1997-1998)



ANUREET K.
BAJAJ, MD
FELLOW
(1996-1997)

PITT PLASTIC SURGERY ALUMNI



M. RUSEN
KAPUCU, MD
FELLOW
(1996-1997)



DEDEBORAH
I. MA, MD
FELLOW
(1995-1997)



ENRICO B.
ROBOTTI, MD
FELLOW
(1996-1997)



LISA B.
BOOTSTAYLOR, MD
RESIDENT
(1996-1998)



LLOYD P.
CHAMPAGNE, MD
RESIDENT
(1996-1998)
FELLOW
(1998-1999)



GREGORY M.
FEDELE, MD
RESIDENT
(1996-1998)



CHET L.
NASTALA, MD
RESIDENT
(1996-1998)



BRETT E.
LEHOCKY, MD, DDS
FELLOW
(1998-1999)



CHRISTINE A.
DIEDWARDO, MD
FELLOW
(1997-1998)
RESIDENT
(1998-2000)



KEITH
JEFFORDS,
MD, DDS
RESIDENT
(1998-2000)



LARRY H.
LICKSTEIN, MD
RESIDENT
(1998-2000)



JESS TING, MD
RESIDENT
(1998-2000)



GUILLERMO
QUETELL, MD
FELLOW IN HAND
AND UPPER
EXTREMITY
(1999-2000)



JAY W.
CALVERT, MD
FELLOW
(1997-1999)
INDEPENDENT
RESIDENT
(1999-2001)



MARC H.
HEDRICK, MD
FELLOW
(1997-1998)



JOE-HO
JEONG, MD
FELLOW
(1997-1998)



LEOPOLDO E.
LANDA, DMD
FELLOW
(1996-1998)



STEVEN P. DAVISON,
MD, DDS
RESIDENT
(1997-1999)



RAMON LLULL, MD
FELLOW
(1993-1994)
RESIDENT
(1997-1999)



DANIEL A.
MEDALIE, MD
RESIDENT
(1997-1999)



DAVID D.
ZABEL, MD
RESIDENT
(1997-1999)



BRIAN V. HEIL, MD
INTEGRATED
RESIDENT
(1996-2001)
RESIDENT
(1999-2001)



SANDEEP
KATHJU, MD, PHD
RESIDENT
(1999-2001)



ADAM J. KATZ, MD
INTEGRATED
RESIDENT
(1993-2001)
RESEARCH FELLOW
(1996-1999)



JOHN M.
SARBAK, MD
RESIDENT
(2000-2001)



FREDERIC W.B.
DELEYIANNIS, MD,
MPH, MPH
RESIDENT
(2000-2002)



JOHN D.
PALETTA, MD
RESIDENT
(2000-2002)



A. NEIL
SALYAPONGSE, MD
INTEGRATED
RESIDENT
(1995-2002)

PITT PLASTIC SURGERY ALUMNI



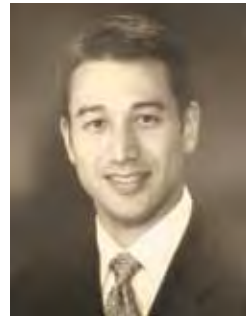
THOMAS E. ZEWERT, MD, PHD
INTEGRATED RESIDENT (1997-2002)



KODI K. AZARI, MD
INTEGRATED RESIDENT (1997-2003)



MICHAEL S. RISIN, MD
INTEGRATED RESIDENT (1997-2003)



LEIF L. ROGERS, MD
RESIDENT (2001-2003)



ALI SAJJADIAN, MD
RESIDENT (2001-2003)



ANN S. SCHWENTKER, MD
INTEGRATED RESIDENT (1996-2003)



KEYOUMARS IZADI, MD, DDS
CRANIOFACIAL FELLOW (2002-2003)



BRIAN R. GASTMAN, MD
INDEPENDENT RESIDENT (2003-2005)



AARON C. MASON, MD
INTEGRATED RESIDENT (2000-2005)



TRUNG "DAVID" NGUYEN, MD
INDEPENDENT RESIDENT (2003-2005)



FREDERICK G. WENIGER, MD, MBA
RESEARCH FELLOW (2002-2003)
INTEGRATED RESIDENT (1999-2005)



JASWIN S. SAWHNEY, MD
HAND FELLOW (2004-2005)



SHAO JIANG, MD
CRANIOFACIAL FELLOW (2004-2005)



ALAN H. CHEN, MD
INDEPENDENT RESIDENT (2004-2006)



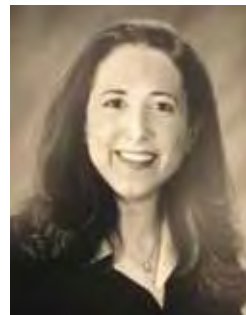
T. OGUZ ACARTURK, MD
INTEGRATED RESIDENT (1998-2004)



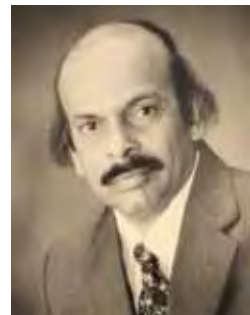
SEAN M.S. BIDIC, MD, MFA
INTEGRATED RESIDENT (1996-2004)



DINAKAR GOLLA, MD
INTEGRATED RESIDENT (1999-2004)



SARAH W. HOLLAND, MD
INTEGRATED RESIDENT (1998-2004)



KRISHNAMURTHY ASHOK, MD
HAND FELLOW (2002-2003)
CLINICAL RESEARCH FELLOW (2003-2004)



RAVI KIRAN, MD
HAND FELLOW (2003-2004)



SIAMAK AGHA-MOHAMMADI, BSC, MB, BCHIR, PHD
INTEGRATED RESIDENT (2000-2005)



VU T. NGUYEN, MD
RESEARCH FELLOW (2002-2004)
INDEPENDENT RESIDENT (2004-2006)



NEGIN NOORCHASHM, MD
INTEGRATED RESIDENT (2000-2006)



JAMES P. O'TOOLE, MD
BODY CONTOURING FELLOW (2004-2005)



LAWTON W. TANG, MD
BODY CONTOURING FELLOW (2005-2006)



TIMOTHY S. NEAVIN, MD
INTEGRATED RESIDENT (2002-2007)



PRAFUL M. RAMINENI, MD
INTEGRATED RESIDENT (2002-2007)



DENNIS Y. SONG, MD
INTEGRATED RESIDENT (2001-2004)
(2005-2007)

PITT PLASTIC SURGERY ALUMNI



ANNA I. WOOTEN, MD
INTEGRATED RESIDENT
(2001-2007)



AHMED AFIFI, MD
CRANIOFACIAL FELLOW
(2005-2007)



GERALD J. KHACHI, MD
BODY CONTOURING FELLOW
(2006-2007)



JUSTIN M. SACKS, MD
RESEARCH/CLINICAL FELLOW
(2004-2006)
HAND FELLOW
(2006-2007)



ALEX SENCHIKOV, MD
MICROVASCULAR RECONSTRUCTIVE SURGERY FELLOW
(2006-2007)



EDWARD S. LEE, MD
INTEGRATED RESIDENT
(2003-2008)



NESTOR A. VEITIA, MD
INDEPENDENT RESIDENT
(2005-2008)



JOSEPH MICHAELS V, MD
BODY CONTOURING FELLOW
(2008-2009)



JAIMIE T. SHORES, MD
HAND FELLOW
(2008-2009)



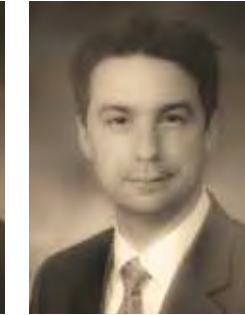
TAE W. CHONG, MD
INDEPENDENT RESIDENT
(2007-2010)



ROE E. RUBINSTEIN, MD
INTEGRATED RESIDENT
(2004-2010)



IAN L. VALERIO, MD, MS, MBA
INTEGRATED RESIDENT
(2004-2010)



DAMON S. COONEY, MD, PHD
MICROVASCULAR RECONSTRUCTIVE SURGERY FELLOW
(2009-2010)



JOHN M. INGRAHAM, MD
HAND FELLOW
(2009-2010)



ALEX K. WONG, MD
INTEGRATED RESIDENT
(2002-2008)



MIMI CHAO, MD
CRANIOFACIAL FELLOW
(2007-2008)



JEFFREY A. GUSENOFF, MD
BODY CONTOURING FELLOW
(2007-2008)



JIMMY C. SUNG, MD, JD
INDEPENDENT RESIDENT
(2006-2009)



TALI FRIEDMAN, MD, MHA
MICROVASCULAR RECONSTRUCTIVE SURGERY FELLOW
(2007-2008)
BODY CONTOURING FELLOW
(2008-2009)



LORELEI J. GRUNWALDT, MD
CRANIOFACIAL FELLOW
(2008-2009)



PETER R. LETOURNEAU, MD
MICROVASCULAR RECONSTRUCTIVE SURGERY FELLOW
(2008-2009)



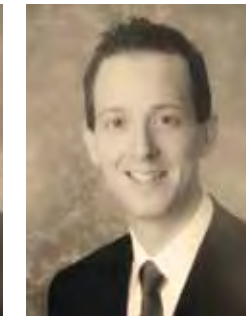
ALEXANDER Y. LIN, MD
CRANIOFACIAL FELLOW
(2009-2010)



JONATHAN W. TOY, MD
BODY CONTOURING FELLOW
(2009-2010)



ANGELA Y. LANDFAIR, MD, MPH
INTEGRATED RESIDENT
(2005-2011)



NELSON E. CASTILLO, MD
INTEGRATED RESIDENT
(2006-2011)



BRIAN C. REUBEN, MD
INDEPENDENT RESIDENT
(2008-2011)



MARIO G. SOLARI, MD
INTEGRATED RESIDENT
(2003-2011)



KIA MCLEAN WASHINGTON, MD
INTEGRATED RESIDENT
(2003-2011)
HAND SURGERY FELLOW
(2011-2012)

PITT PLASTIC SURGERY ALUMNI



JENNIFER M. CAPLA, MD
BODY
CONTOURING
FELLOW
(2010-2011)



ALEXANDER J. DAVIT III, MD
CRANIOFACIAL
FELLOW
(2010-2011)



ROBERT K. KWON, MD
HAND FELLOW
(2010-2011)



PAUL J. SCHEMBRI, MD
MICROVASCULAR
RECONSTRUCTIVE
SURGERY FELLOW
(2010-2011)



JULIO A. CLAVIJO-ALVAREZ,
MD, PHD, MPH
INTEGRATED
RESIDENT
(2005-2012)



JERROD N. KEITH, MD
INDEPENDENT
RESIDENT
(2009-2012)



GALEN S. WACHTMAN, MD
INTEGRATED
RESIDENT
(2004-2012)



NAVEEN K. AHUJA, MD
MICROVASCULAR
RECONSTRUCTIVE
SURGERY FELLOW
(2011-2012)

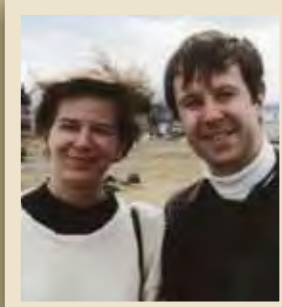
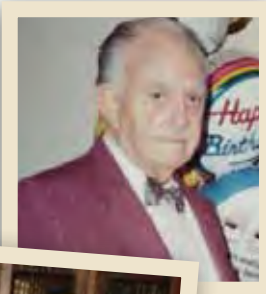


RONALD P. BOSSERT, MD
BODY
CONTOURING
FELLOW
(2011-2012)



LAURA A. MONSON, MD
CRANIOFACIAL
FELLOW
(2011-2012)









University of Pittsburgh

*School of Medicine
Department of Plastic Surgery
6B Scaife Hall
3550 Terrace Street
Pittsburgh, PA 15261*

www.plasticsurgery.pitt.edu