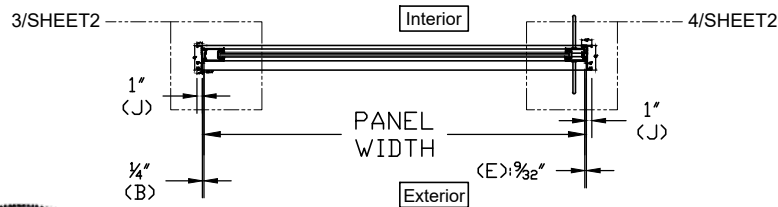
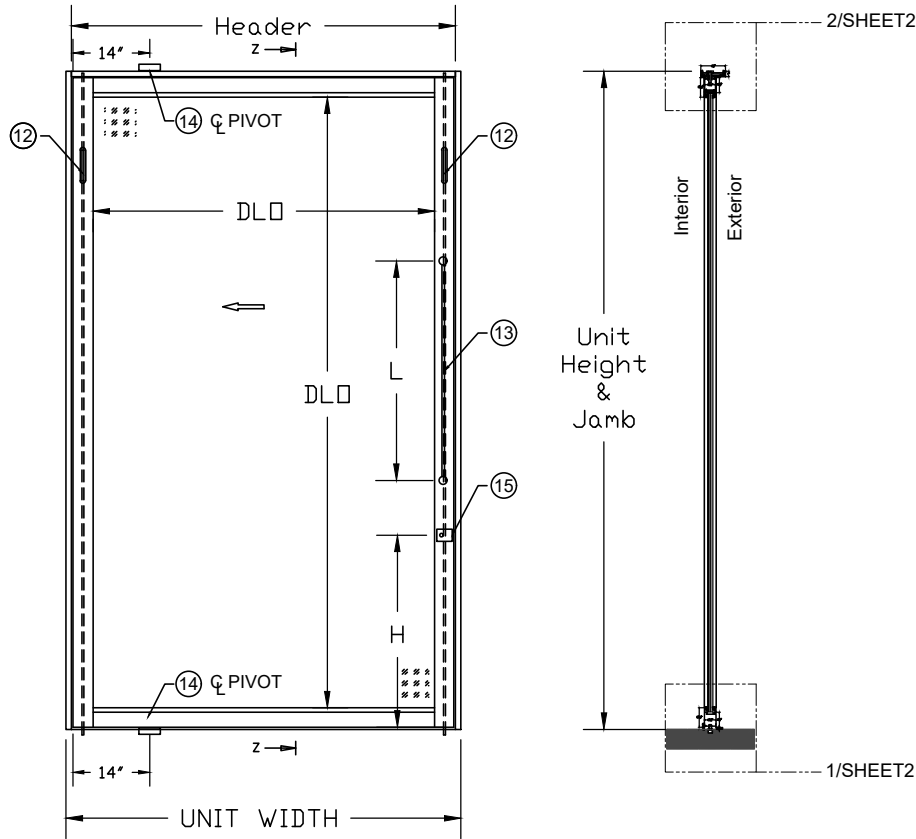
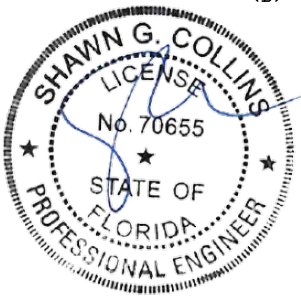
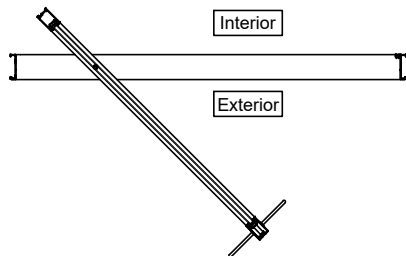


GENERAL NOTES:

- 1) THIS PRODUCT HAS BEEN DESIGNED & TESTED TO COMPLY WITH THE REQUIREMENTS OF THE FLORIDA BUILDING CODE, INCLUDING THE HIGH VELOCITY HURRICANE ZONE (HVHZ).
- 2) SHUTTERS ARE NOT REQUIRED WHEN USED IN WIND-BORNE DEBRIS REGIONS.
- 3) FOR MASONRY APPLICATIONS IN MIAMI-DADE COUNTY, USE ONLY MIAMI-DADE COUNTY APPROVED MASONRY ANCHORS. MATERIALS USED FOR ANCHOR EVALUATIONS WERE SOUTHERN PINE, ASTM C90 CONCRETE MASONRY UNITS AND CONCRETE WITH MIN. KSI PER ANCHOR TYPE.
- 4) ANCHOR EMBEDMENT TO BASE MATERIAL SHALL BE BEYOND WALL DRESSING OR STUCCO. USE ANCHORS OF SUFFICIENT LENGTH TO ACHIEVE REQUIRED MIN. EMBEDMENT. INSTALLATION ANCHORS SHOULD BE SEALED. OVERALL SEALING/FLASHING STRATEGY FOR WATER RESISTANCE OF INSTALLATION SHALL BE DONE BY OTHERS AND IS BEYOND THE SCOPE OF THESE INSTRUCTIONS.
- 5) 1/4" MAX. SHIMS ARE REQUIRED AT EACH ANCHOR LOCATION WHERE THE PRODUCT IS NOT FLUSH TO THE SUBSTRATE. USE SHIMS CAPABLE OF TRANSFERRING APPLIED LOADS.
- 6) DESIGN PRESSURES:
 - A. NEGATIVE DESIGN LOADS BASED ON STRUCTURAL TESTING AND GLASS PER ASTM E1300.
 - B. POSITIVE DESIGN LOADS BASED ON WATER TEST PRESSURE, STRUCTURAL TESTING AND GLASS PER ASTM E1300.
- 7) THE ANCHORAGE METHODS SHOWN HAVE BEEN DESIGNED TO RESIST THE WINDLOADS CORRESPONDING TO THE REQUIRED DESIGN PRESSURE. THE 33-1/3% STRESS INCREASE HAS NOT BEEN USED IN THE DESIGN OF THIS PRODUCT. THE 1.6 LOAD DURATION FACTOR WAS USED FOR THE EVALUATION OF ANCHORS INTO WOOD. ANCHORS THAT COME INTO CONTACT WITH OTHER DISSIMILAR MATERIALS SHALL MEET THE REQUIREMENTS OF THE FLORIDA BUILDING CODE FOR CORROSION RESISTANCE.
- 9) METAL SUBSTRATE TO MEET MIN. STRENGTH AND THICKNESS REQUIREMENTS PER CURRENT FLORIDA BUILDING CODE AND TO BE REVIEWED BY THE AUTHORITY HAVING JURISDICTION.
- 10) PRODUCT TESTED TO TAS 201, TAS 202 AND TAS 203 AS REPORTED ON BLACKWATER TESTING REPORT NUMBER BT-EUW-17-002



RIGHT HAND SWING AND LEFT HAND SWING ARE APPROVED FOR USE



06/22/2017

FL PE # 70655
SHAWN G. COLLINS, P.E.
1212 CHATHAM PINE PLACE
BRANDON, FL 33511

<h1>Euro-Wall</h1>		
Product Line	EURO-PIVOT	Drawn by: RF
Drawing	EURO-PIVOT-FPA-HVHZ	Dt: 6.1.2017
Sheet	1 of 5	Rev:
Glazing	2 Options (see page 3)	Scale: 1-35

TABLE 1: PERIMETER ANCHOR SCHEDULE

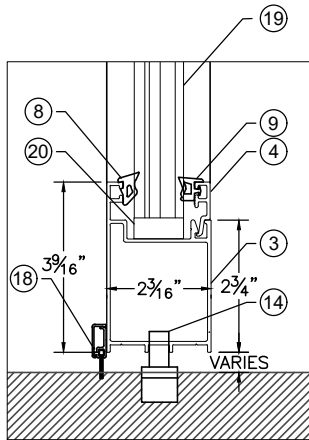
Building Structure	Fastener Type	Minimum Embed.	Minimum Edge Distance	Minimum on Center Spacing	Maximum on Center Spacing	Notes:
Min. 2000 PSI Concrete	Tapcon 1/4"	1 3/4"	2 1/2"	SEE SHT. 4	SEE SHT. 4	
Min. 4000 PSI Concrete	Tapcon 1/4"	1 3/4"	2 1/2"	SEE SHT. 4	SEE SHT. 4	
Southern Pine	5/16" Lag	1 1/2"	1 1/2"	SEE SHT. 4	SEE SHT. 4	G=0.55
Spruce Pine Fir	5/16" Lag	2"	1 1/2"	SEE SHT. 4	SEE SHT. 4	G=0.46
Grout-Filled Masonry	Tapcon 1/4"	1 3/4"	2 1/2"	SEE SHT. 4	SEE SHT. 4	1800 psi
Light-Gage Framing	1/4"-20" HWH	1 3/4"	1"	SEE SHT. 4	SEE SHT. 4	18 ga. min
Metal Al. or Steel	1/4"-20" HWH	1 3/4"	1"	SEE SHT. 4	SEE SHT. 4	1/8" thick

NOTE: ALL ANCHORS TO HAVE A MAX. 1/4" SHIM SPACE

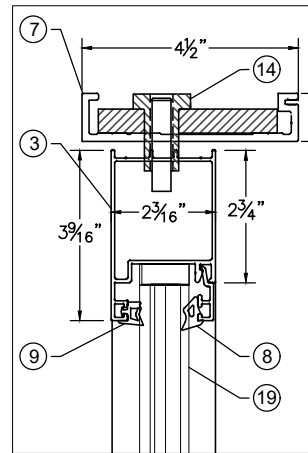
TABLE 2: DESIGN PRESURE TABLE

Design Pressure Table (±psf)										
Panel Width (Inches)										
Panel Height (Inches)	40	44	48	50	56	60	66	69.5	72	
	72	60.0	60.0	60.0	60.0	60.0	60.0	60.0	60.0	60.0
78	60.0	60.0	60.0	60.0	60.0	60.0	60.0	60.0	60.0	
84	60.0	60.0	60.0	60.0	60.0	60.0	60.0	60.0	60.0	
90	60.0	60.0	60.0	60.0	60.0	60.0	60.0	60.0	60.0	
96	60.0	60.0	60.0	60.0	60.0	60.0	60.0	60.0	60.0	
102	60.0	60.0	60.0	60.0	60.0	60.0	60.0	60.0	60.0	
108	60.0	60.0	60.0	60.0	60.0	60.0	60.0	60.0	60.0	
114	60.0	60.0	60.0	60.0	60.0	60.0	60.0	60.0	60.0	
118, 375	60.0	60.0	60.0	60.0	60.0	60.0	60.0	60.0	60.0	58.5
120	60.0	60.0	60.0	60.0	60.0	60.0	58.8			
126	60.0	60.0	60.0	60.0	60.0	54.6	51.6			
132	60.0	60.0	51.5	49.7	45.0	42.5				
138	60.0	50.8	43.0	41.4	37.5					
144	60.0	42.7	36.1	34.8	31.4					

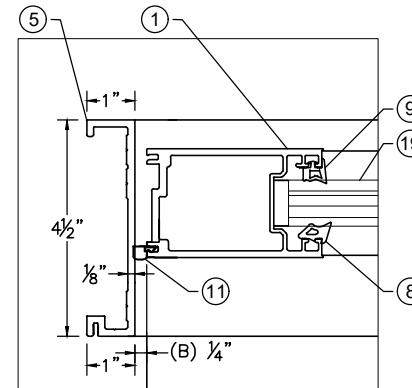
NOTE: DLO (HEIGHT)= PANEL SIZE - 5-1/8"
NOTE: DLO (WIDTH)= PANEL SIZE - 5-3/8"



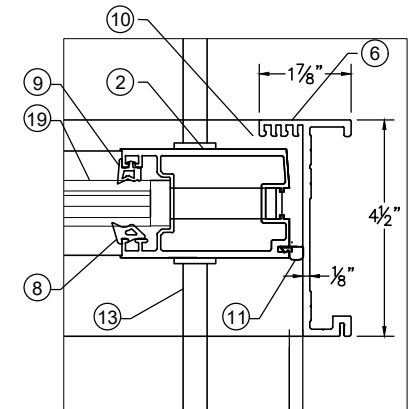
DETAIL 1 BOTTOM PIVOT



DETAIL 2 HEAD PIVOT

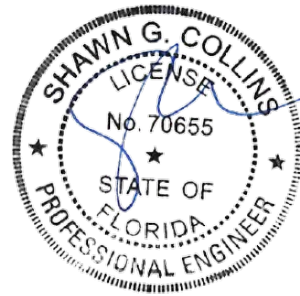


DETAIL 3 HINGE JAMB



DETAIL 4 LOCK JAMB

ALL UNITS MAY BE CLADDED WITH INTERIOR AND EXTERIOR CLADDING



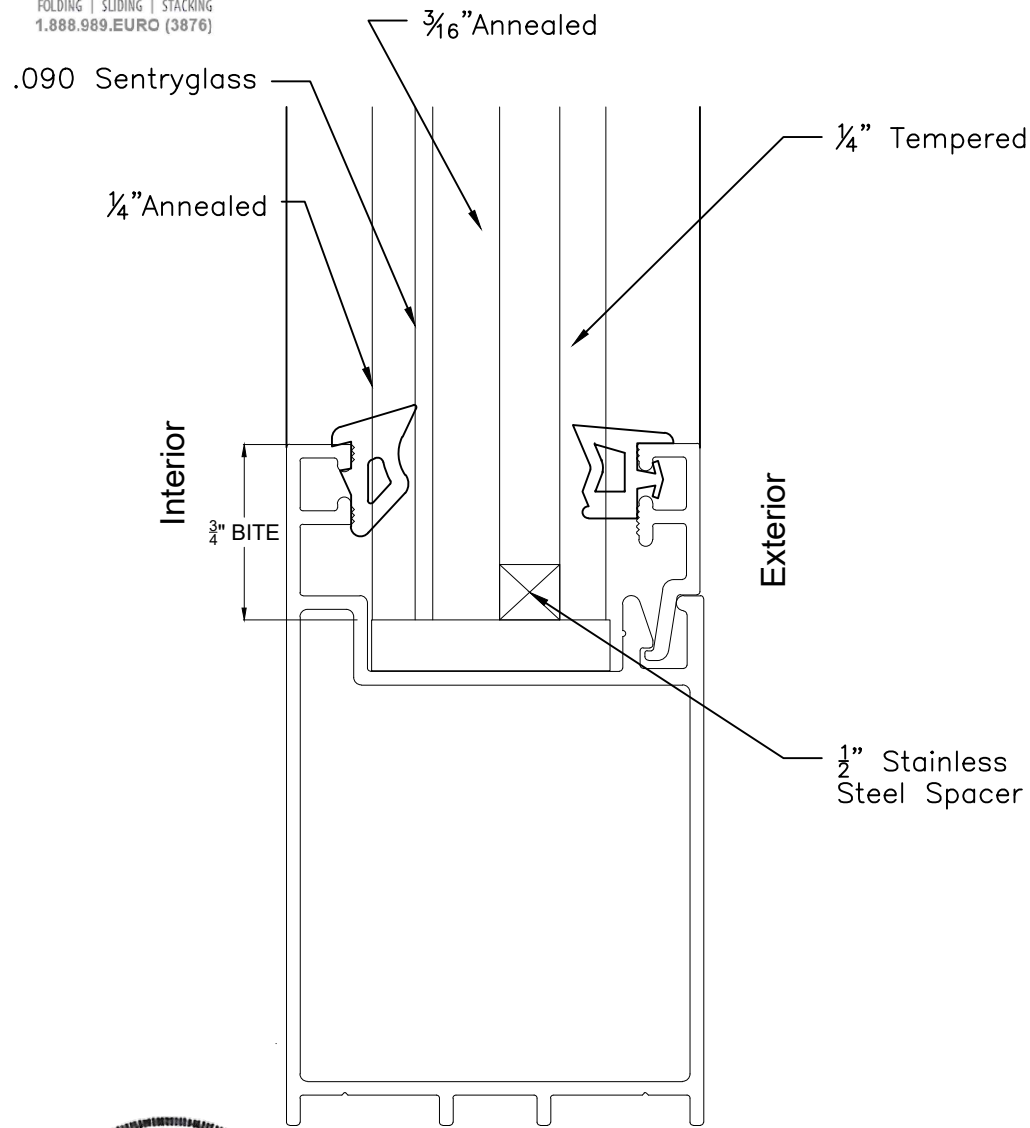
06/22/2017

FL PE # 70655
SHAWN G. COLLINS, P.E.
1212 CHATHAM PINE PLACE
BRANDON, FL 33511

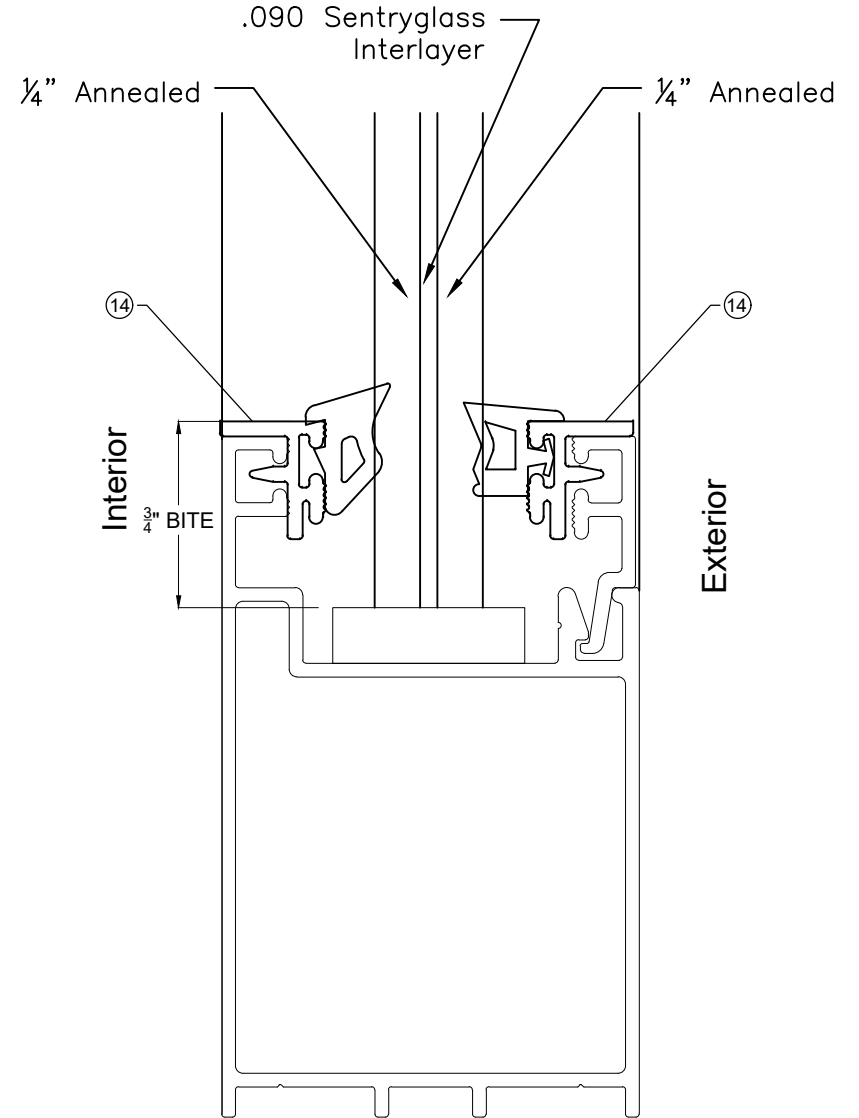
Euro-Wall

Product Line	EURO-PIVOT	Drawn by: RF
Drawing	EURO-PIVOT-FPA-HVHZ	Dt: 6.1.2017
Sheet	2 of 5	Rev:
Glazing	2 Options (see page 3)	Scale:NTS

GLASS MAKE-UP



Option 1: 1 3/8" IG Impact



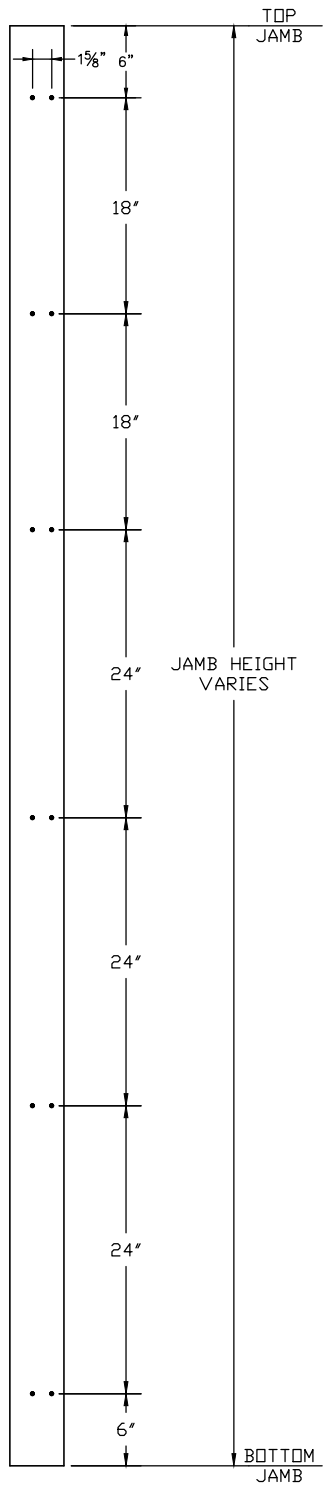
Option 2: 9/16" Monolithic Impact



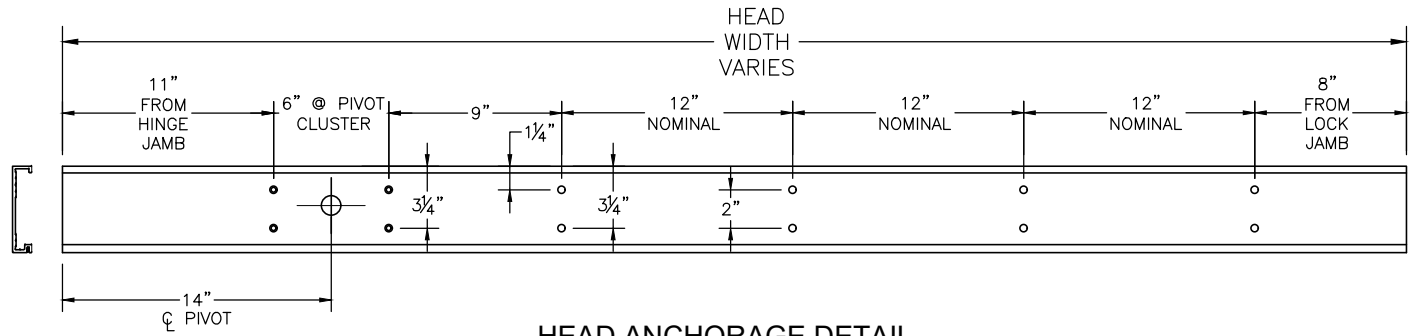
06/22/2017

Euro-Wall		
Product Line	EURO-PIVOT	Drawn by: RF
Drawing	EURO-PIVOT-FPA-HVHZ	Dt: 6.1.2017
Sheet	3 of 5	Rev:
Glazing	2 Options (see page 3)	Scale:NTS

FL PE # 70655
SHAWN G. COLLINS, P.E.
1212 CHATHAM PINE PLACE
BRANDON, FL 33511

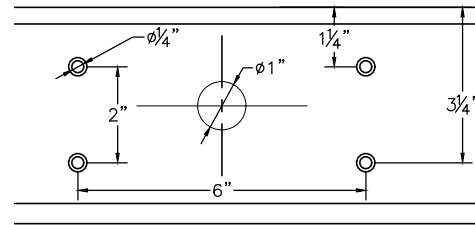


JAMB ANCHORAGE DETAIL

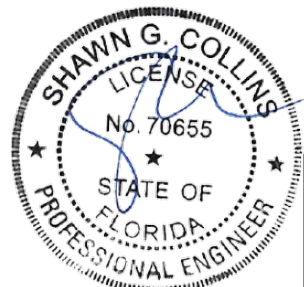


HEAD ANCHORAGE DETAIL

SEE SHEET 2 FOR ANCHOR
TYPES AND SUBSTRATE
REQUIREMENTS



HEAD PIVOT CLUSTER



06/22/2017
euro-wall
FOLDING | SLIDING | STACKING
1.888.989.EURO (3876)

FL PE # 70655
SHAWN G. COLLINS, P.E.
1212 CHATHAM PINE PLACE
BRANDON, FL 33511

<h2>Euro-Wall</h2>		
Product Line	EURO-PIVOT	Drawn by: RF
Drawing	EURO-PIVOT-FPA-HVHZ	Dt: 6.1.2017
Sheet	4 of 5	Rev:
Glazing	2 Options (see page 3)	Scale:NTS

PIVOT DOOR BILL OF MATERIALS

ITEM #	PART #	DESCRIPTION	MATERIAL	Qty.
1	PV 01	RECESSED STILE	AL. (6063-T5)	1
2	PV 02	ACTIVE STILE	AL. (6063-T5)	1
3	PV 03	RAIL	AL. (6063-T5)	2
4	PV 04	GLAZING BEAD	AL. (6063-T5)	2
5	PV 05	HINGE JAMB	AL. (6063-T5)	1
6	PV 06	LOCK JAMB	AL. (6063-T5)	1
7	PV 07	HEADER	AL. (6063-T5)	1
8	PV 08	GLAZING GASKET (Interior)	EPDM (Trellborg)	ft
9	PV 09	GLAZING GASKET (Exterior)	EPDM (Trellborg)	ft
10	PV 10	FRAME WEATHER STRIP	Pro-Ion Urethane Foam	ft
11	PV 11	PANEL WEATHER STRIP	Pro-Ion Urethane Foam	ft
12	PV 12	SHOOTBOLT LOCK ASMB.	CRM-SS-Steel	2
13	PV 13	DOOR HANDLE	CRM-SS-Steel	1
14	PV 14	PIVOT HINGE	CRM-SS-Steel	2
15	PV 15	THUMB BOLT	CRM-SS-Steel	1
16	PV 16	MULTIPOINT LOCK	ASSEMBLY	1
17	PV 17	HYDRAULIC CLOSURE	ASSEMBLY	1
18	PV 18	SWEEPS (2 Options)	RUBBER	1
19	PV 19	GLASS		1
20	PV 20	GLAZING BLOCK	RUBBER	4
21	PV 21	POCKET REDUCER	AL. (6063-T5)	2



1 RECESSED STILE
6061-T5



2 ACTIVE STILE
6061-T5



3 RAIL
6063-T5



4 GLAZING BEAD
6063-T5



5 HINGE JAMB
6063-T5



6 LOCK JAMB
6063-T5



7 HEADER
6063-T5



8 GLAZING GASKET
EPDM (Trellborg)



9 GLAZING GASKET
EPDM (Trellborg)



10 FRAME WEATHER STRIP



11 PANEL WEATHER STRIP



12 SHOOT BOLT LOCK
304 Stainless Steel.



13 DOOR HANDLE
Aluminum



14 PIVOT HINGE
Assembly



15 THUMB BOLT
Assembly



16 MULTI POINT LOCK
Assembly



17 HYDRAULIC CLOSURE
Assembly



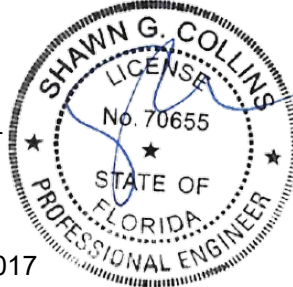
18 SWEEP
Rubber



20 GLAZING BLOCK
RUBBER



21 POCKET REDUCER
6063-T5



06/22/2017

FL PE # 70655
SHAWN G. COLLINS, P.E.
1212 CHATHAM PINE PLACE
BRANDON, FL 33511

Euro-Wall

Product Line	EURO-PIVOT	Drawn by: RF
Drawing	EURO-LS100-PIVOT-HVHZ	Dt: 6.1.2017
Sheet	5 of 5	Rev:
Glazing	2 Options (see page 3)	Scale:NTS