

EVOLUTION AG

OUR CUSTOMERS FEED THE WORLD

Edition 10 - Spring 2018



CASE IH
AGRICULTURE

Spring Equipment Guide

Contents:

- New Equipment
- Used Equipment
- Customer Appreciation Days
- Specials



CIRCLEVILLE
740-474-2181

LISBON
330-222-1521

PLAIN CITY
740-363-1341

UPPER SANDUSKY
419-294-3876

UTICA
740-892-2831



Customer Appreciation

Open House Week and Parts Celebration

Evolution Ag Customers Capture the Savings!!!

	<u>Cost</u>	<u>Savings</u>
55 Gallons of SAE 15W 40	\$669	\$164
55 Gallons of Hy-Tran	\$699	\$187
<ul style="list-style-type: none">• <u>10% Off ALL PARTS INCLUDING: Filters, Oils, Points, Lubes, Toys, Clothing, Batteries, Safes, Power Washers, Heaters, (and more)</u>(Excludes Precision Farming and Stihl. \$250 minimum purchase)• 90 Days 0% interest on purchases using Case IH Productivity Plus (\$1,500 minimum)• \$50 reward card for \$500 purchase of Case IH filters, lubricants and fluids.• Free adapter for qualifying purchase of Case IH Maxi Point or Maxi Grip sweeps.• For the first 50 customers at each location, go to our new website at www.evolutionagllc.com, print the coupon for a new Case IH or Evolution Ag hat and you could win the Voyager ToughCam.		



Open House and Parts Celebration Schedule

February 19th – February 23rd

Circleville

Plain City

Upper Sandusky

Utica

February 26th – March 3rd

Lisbon

February 23rd (Plain City Location) 9:00 a.m. Pesticide Recertification

1:30 p.m. Fertilizer Certification

(Call 800-421-2374 extension 101 for information and reservations)

New Tractors For Spring



Magnum

180, 200, 240, 280, 340, 380



Maxxum

125, 150



Steiger

420, 470, 500(Quad), 540(RT)



Farmall

35A, 50A, 60A, 70A, 75C, 90C,
100C, 120C, 140A
Open Station and Cab Options



Optum

270



Puma

185

Find model and spec information on our new website
www.evolutionagllc.com

LISBON
330-222-1521

CIRCLEVILLE
740-474-2181

PLAIN CITY
740-363-1341

UPPER SANDUSKY
419-294-3876

UTICA
740-892-2831

Used Tractors



14 Case IH 450Q: SUT945, 840 hrs, PTO, autoguidance, p/s, high capacity pump, 6 remotes. **\$269,000(US)**



11 CASE IH 500Q: SUT821, 2620 hrs, luxury cab, 30" tracks, pto, 4 remotes, autoguide ready. **\$230,000(US)**



14 CASE IH 370HD: UT2101, 1250 hrs, luxury cab, 4 remotes, high capacity pump, pto autoguide. **\$215,000(C)**



09 Case IH 385: SUT793, 1835 hrs, autoguide complete, 620 firestone tires, very nice. **\$139,000(US)**



93 CASE IH 9230: PUT524, 8100 hrs, steerable front axle, 3 point, pto, 4 remotes, 18.4x38 tires, case drain. **\$39,900 (PC)**



13 Case IH 370: UT9120, 1000 hrs, susp front axle, auto steer, high capacity pump, 5 valves, 30 mph **\$189,500(PC)**



09 Case IH 335: UT4958, 3240 hrs, luxury cab, high flow, 4 remotes, autoguide ready. **\$119,000(PC)**



11 Case IH 315: UTP108, 1277 hrs, auto steer, front and rear duals, 4 valves, luxury cab, 18.4x46 tires. ... **\$149,500 (PC)**



14 Case IH 235: UT8760, 390 hrs, front and rear duals, 3 pto's, powertrain warranty until 2019. **\$165,049 (PC)**



11 Case IH 215: UT6796, 2240 hrs, front and rear duals, both pto, 4 remotes, full auto steer. **\$120,000 (U)**



98 Case IH MX110: UT2430, 6700 hrs, 2WD, duals. **\$27,500(U)**



11 Case IH 190: UT2621, 910 hrs, standard cab, rear duals. **\$95,500(U)**



01 Case IH MX220: UT2442, 6330 hrs, rear duals, auto guidance. **\$59,500 (U)**



06 Case IH MX245: UT1088, 540/1000 pto, 5300 hrs, front and rear duals, complete service and new tires **\$89,500(PC)**



05 Case IH STX325: UT7097, 2800 hrs, 4 valves, bare back, std hydraulic pump, 18.4x42 duals. **\$88,500(PC)**



12 Case IH 350HD: UT2076, 1000 pto, 4 remotes, full autoguide, 16 spd powershift, 18.4x46. **\$170,000(C)**

Check out our **NEW!!!** website @
evolutionagllc.com

Print the coupon and bring it in during our Customer Appreciation and Parts Celebration week, for a new hat and be entered to win a Tough Cam.

Used Tractors



87 Case IH 7110: UT2120, 8329 hrs, 18 speed powershift, 3 remotes, 540/1000 pto, 12 weights. **\$29,800 (C)**



14 Case IH Maxxum 140: UT1305, 2600 hrs, multicontroller, 3 remotes, bar axle, power beyond, susp cab. **\$78,000 (L)**



IH 1486: UT8524, nice one owner tractor, 4100 hrs, well maintained. **\$18,500 (U)**



83 Case 1190: UT466, 3080 hrs, 3 cylinder diesel, 43 hp, 12 forward, 4 reverse. **\$6,900 (PC)**



07 McCormick MTX120, TA8385, 4268 HRS, Semi Pwrshft Trans, 16X16, 4WD, 540/1000 PTO, C/H/A, 3 Rear Rem **\$34,000 (U)**



14 Case IH Maxxum 125: ut2630, 480 hrs, 4wd, 18, 4x38, 16x16 semi powershift, cab, cold weather package. **\$69,900(U)**



04 McCormick MTX150, UT3041, 3200 hrs, bar axles, full set of front weights, clean cab no duals. **\$42,000(U)**



08 Case IH Farmall 95: UT1473, 2470 hrs, MFD, loader with SSL quick attach, 540/1000 pto, serviced. **\$32,500(U)**



72 John Deere 4230: UT659R, 2wd, quad range trans, 2 remotes, 6 front weights ... **\$14,000 (PC)**



74 John Deere 4430: UT4172, 9185 hrs, complete restoration. **\$23,500 (U)**



95 John Deere 5400: UT2103, 8873 hrs, 540 pto, 2wd, 2 remotes, 21.5-16.1 turf tires on rear. **\$5,900 (C)**



10 John Deere 6115D: UT2462, 2750 hrs, cab, heat air, new front tires, 2 remotes, nice tractor ... **\$36,000 (PC)**



14 John Deere 6130D: SUT882, 132 hrs, loader ready, 540/1000 pto, rear weight package, deluxe cab, 18.4x38 **\$59,900 (US)**



78 John Deere 8630: UT562R, 4000 hrs on 50 series motor, 3 point, 1000 pto, 3 remotes, front blade. **\$23,500 (U)**



73 Massey Ferguson 1085: UT0484, 9100 hrs, 8 speed 540 pto, 1 remote, four post canopy, 16.9x38 tires. **\$6,500 (C)**



12 New Holland T9.615: UT2286, 1760 hrs, 1000 pto, 4 remotes, luxury cab, 36" belts, high idler track setup. **\$250,000 (L)**

Customer Appreciation Days

Feb 19th - 23rd at Circleville, Plain City, Upper Sandusky and Utica

Feb 26th- March 3rd at Lisbon

INNOVATION REDEFINED!



The original Unverferth Seed Runner® patented self-filling seed tender sets new standards for functional design innovation. Today's 55-series Seed Runner tenders redefine those standards with a lower tank profile and gentler conveyor design for faster, smoother self-filling than ever!

Unverferth Seed Runner tenders are ideal for the widest variety of bulk seed handling, including corn, soybeans, cotton, peanuts and wheat.

- Patented, one-piece conveyor belt design with U-shaped rows of molded, cupped cleats for gently carrying seed at up to 40 percent higher capacity
- Models include the 3955XL with 400-seed unit capacity; 3755XL/3755 with 375 seed-unit capacity; 2755XL/2755 with 275 seed unit capacity; XL models feature 21'-long conveyor for 3' of added reach
- Optional scales for calculating quantity of seed dispensed and/or use as a weigh wagon for field trials, including a model with auto-shutoff; choice of 3-, 6- or 7-function wireless remotes

See your nearest Unverferth dealer or visit umequip.com today for complete details.



Unverferth
Manufacturing Company, Inc.

P.O. Box 357 • Kalida, Ohio 45853 • 419.532.3121 • unverferth.com

LEVELS! MIXES! CONDITIONS!



Hitch the triple-action Rolling Harrow® soil conditioner to your field cultivator or disc and the result is a time-proven smooth, **one-pass seedbed** with coarse soil on top that resists crusting and finer particles at planting depth for enhanced seed-to-soil contact.

- **Front aggressive basket** penetrates up to 3" deep for maximum soil tillage, residue and chemical mixing
- **Passive rear basket** on models 225 and 1245 smooths and levels the surface
- **Rear rolling drum** on model 1245D features welded and staggered cleats for enhanced soil firming and a deeper stone set for added draper head clearance
- Single-piece, high-carbon steel serrated blades for ideal tillage action
- Optional front leveling bar — coil tine, diagonal or spike tooth — knocks down ridges
- Working widths from 12' to 63', depending on model

The right Rolling Harrow soil conditioner for you depends on acres of use, volume of residue and operating preferences. See your nearest Unverferth dealer or visit umequip.com today for complete details.

Unverferth
Manufacturing Company, Inc.



SPEND LESS TIME IN THE FIELD. GET MORE OUT OF IT.

We designed the new Case IH 2160 Early Riser® planter to be productive the moment it leaves the shed. Its four configurations are factory-integrated with the industry's most accurate planter technology: including our all-new rugged row unit, steerable Rowtrac™ Carrier system and in-furrow fertilizer capability. Providing you increased efficiency. Decreased downtime. And, most importantly, maximum productivity from every inch you farm. Visit caseih.com/newearlyriser.

New Case IH Planters

ER1225

ER2150

ER1245

ER2150- Govt Discount



Used Planters & Drills

10 Case IH ER1240- \$65,000(C)

13 Case IH ER1245- \$89,000(C)

89 John Deere 1770- \$26,500(U)

John Deere 1780- \$28,000(US)

07 John Deere 1790- \$78,000(US)

14 Kinze 3500- \$46,000(U)

12 Kinze 3600- \$89,500(U)

IH 620- \$2,350(U)

01 John Deere 1560- \$21,000(PC)

John Deere 1590- \$27,800(C)



TRUE VERTICAL TILLAGE MORE TO THE MAX

10 MODELS RANGING FROM 8.5' to 48'



We've raised the bar again with more options on our innovative Turbo-Max!

- **NEW** hydraulic tongue for easy front-to-back leveling
- **NEW** hydraulic adjustable finishing reel to prepare the optimal seedbed
- **NEW** sizes ranging from 8.5' to 48' to perfectly match your tractor and farm
- Hydraulically adjust gang angle from 0 to 6 degrees on the go for convenience
- Add Turbo-Seeder™ to select Turbo-Max® models for single-pass cover crop application

Discover why there's *more to the Max* at www.greatplainsag.com/agsolutions. There, you will find implement features and benefits, product videos, agronomic information, and much more.



Turbo-Seeder™



Max-Chisel™



Turbo-Chisel®



Disk Harrow



Disc-O-Vator®



Lister Cultivator

BULK-FILL PLANTING? WATCH YOUR WEIGHT.



KINZE 3600 PIVOT FOLD WITH HYDRAULIC WEIGHT TRANSFER

Reduced fill time. Reduced soil compaction. Consistent depth control. That's what you get with the 3600's bulk fill and hydraulic weight transfer. Exclusive air seed delivery system minimizes the chance of bridging or plugging. Balanced split-row design. Optional hydraulic variable drive increases precision and versatility of seed population. Narrow in-line transport for easier maneuverability.



3600 PIVOT FOLD w/split row option

12 Row 30" / 23 or 24 Row 15" • 12 Row 36" / 23 Row 18"

12 Row 38" / 23 Row 19" • 16 Row 30" / 31 or 32 Row 15" • 16 Twin Row 30"





GOT 42 MINUTES?

The new Case IH Trident™ 5550 liquid/dry combination applicator is the fastest converting combo applicator in the industry. Specifically designed for conversion, it switches from liquid to dry application in only 42* minutes. And that means you can trade in those long hours spent in the shop for productive time in the field. Sounds like a good deal to us. Head to caseih.com/fast to learn more.



New Sprayers



Case IH Patriot 3340: 1000 Gal tank, 120' booms. Call for more details & pricing.



Case IH Patriot 2250: 660 Gal tank, 90' booms. Call for more details & pricing.



Case IH Patriot 4440: 1200 Gallon tank, 120' AIM Command Flex.

Used Applicators



06 Patriot 4420: 2885 hrs, 1200 gal, 90' booms, Viper Pro with Raven autoguide (UA1080) .. \$139,500 (U)



05 Case IH SPX4410: 1200 Gallon, 3980 hrs, Raven Controls, active suspension .(UA2626). \$99,500 (PC)



05 Case IH SPX3310: New Engine, 60/90' Boom, 20"/30" Nozzle Spacing, (PUA468) ... \$94,900 (PC)



Blu-Jet AT4010: 40', 28% applicator, 1400 gal tank, 20" rows can change to 3"... (SU1900)... \$15,000 (US)



00 Hardi Commander: 80 ft booms, 800 gal tank, PTO pump. (UI2427) ... \$10,500 (U)

Seed Tenders



New Unverferth 2755 Seed Tender: Call for details and pricing.



Unverferth 3755 Seed Tender: Call for details and pricing.



17 J&M LC290: Talc applicator wireless remote, tarp, used 3 times, scales. . . (PUI102). . . \$27,800(PC)

Multi-Crop Harvesting Solution

Any crop any condition, the MacDon FlexDraper® is the ultimate performance upgrade for your combine. Our fixed reel to cutterbar relationship provides true ground following, and our smooth, consistent, heads-first feeding make the FlexDraper® a harvesting performance legend. Designed to fit on all major brand combines, these headers deliver a significant boost to your productivity. No wonder it's the preferred choice of top producers and custom harvesters around the world.

Take your harvest to the next level with an FlexDraper®.

Call your local MacDon dealer today or see it in action at MacDon.com



FlexDraper®

The Harvesting Specialists. **MacDon®**



START YOUR NEXT GROWING SEASON WITH AN EDGE.

Get a head-start on the next growing season with the new Case IH True-Tandem™ 335 Barracuda. Developed using proven Agronomic Design™ principles, the 335 Barracuda delivers aggressive soil and residue management to leave behind a blacker surface finish than other Case IH vertical tillage tools. Its rugged design is built for reliability at high speeds and the aggressive, new 22-inch serrated Earth Metal® blades stay sharper longer to break up hard, dry soils for increased nutrient cycling. Finish strong with the TigerPaw™ Crumbler® double-edge rolling reel that tucks residue into the soil surface for improved leveling and proper soil structure. Start with an edge at caseih.com/barracuda.

- Manage heavy crop residue and soils
- Cut, incorporate and evenly distribute the most stubborn crop residue up to 4 inches deep

Call us about a demonstration on your farm!

LISBON
330-222-1521

CIRCLEVILLE
740-474-2181

PLAIN CITY
740-363-1341

UPPER SANDUSKY
419-294-3876

UTICA
740-892-2831

Used Tillage



J&M TF1537: UI215 double basket, 37' soil conditioner. **\$11,900(C)**



Unverferth 225: SUI937, 35' rolling harrow, with leveling harrow, baskets are 40%, but in working order. **\$6,500(US)**



Landoll 2325-5-24: UI2295, 4 parabolic shanks, adjustable disc gangs. **\$7,250(L)**



99 DMI Tigermate: UI2070, 30', 5 bar spike harrow, rear hitch with hydraulics. **\$13,500(C)**



10 Landoll 3130: SUI939, 36' packer, low acres, scrapers, tandem wheels, store inside, very nice. **\$17,500(US)**



12 Landoll 2211-11: SUI849, blades in great condition, point and points excellent, 8.5-10. **\$36,000(US)**



Landoll 6230-29: UI2194, 29' rock flex disc with low acreage, rear hitch. **Call for Price(U)**



Brillion X108: UI2222, 27', good condition. **\$12,900(L)**



DMI Turbo Tiger: UI141, 7 shank parabolic, rear disc leveler. ... **\$6,000(C)**



12 Landoll 2211-11: UI7291, 11 shank, 15" spacing, less than 1000 acres, 16'4" rear finish width. **\$41,500(US)**



11 Remlinger DC12242AT: SUI938, Double basket, 39', field ready, baskets are 60%. **\$5,900(US)**



09 Krause 5635-39: SUI898, 42', rear hitch, HD shanks, low acreage, walking tandems, gauge wheels. **\$48,000(US)**



10 Great Plains 1800TC: UI351Y, blades, chopper and reel in very good shape, 18'. **\$22,900(L)**



08 Great Plains 2400TT: UI27NN, 24' turbo fill. **\$24,000(PC)**



2012 Case IH 330: SUI723, 31', rear hitch, rear baskets have little wear nice machine. **\$42,500(US)**



13 Salford 570: UI2622, 30', turbo blades, approximately 5,000 acres, stored inside. **\$36,500(U)**



10 Great Plains 3000TC: UI250, 30' turbo chopper. **\$24,000(C)**



12 Salford 29RTSHD: PUI223, HD rubber torsion, individually mounted coulters, rolling & long tine harrow. ... **\$41,000(PC)**



07 Great Plains UT5036: UI7670, 36' double fold, turbo blades, phoenix harrow, single basket. **\$21,000(PC)**



11 Sunflower 5135-38: SUI924, 38', 5 section, HD shanks, field cultivator, rear hitch, walking tandem. **\$28,000(US)**



LOW PROFILE. HIGH PRODUCTIVITY.

Build dense, uniform bales with the Case IH RB565 Premium round baler. The baler's low-profile design lets the pickup float over ground contours, gently gathering crop while saving nutrient-packed leaves. And because you pick up wider, fuller windrows, you maximize your productivity in every pass. With 20 percent more capacity than previous models, a cut out clutch with increased torque, an overshot feeder, and stronger more durable components to increase the wear life, the Case IH RB565 Premium round baler offers solid reliability, durability and performance.

New Case IH Hay Tools

Mower Conditioners

DC133
DC102
DC92

Round Baler

RB455

Large Square Baler

LB344

Used Hay Tools

Round Balers

New Holland BR7060 \$16,500(L)
Case IH RB455 \$34,500(U)

Mower Conditioners

Case IH DC102 \$14,900(C)
Case IH DC132 \$16,900(U)
Kuhn FC353GC \$10,000(L)
Kuhn FC353GC \$14,500(L)
New Holland 488 \$2,750(U)
Case IH 8340 \$5,950(L)

Rakes

Kuhn GA3200GT \$6,250(L)
Kuhn GA7822 \$15,900(L)
Kuhn GA4121GHT \$5,950(L)
New Holland 55 \$1,250(PC)

Square Balers

Case IH 541C \$16,900(U)
Massey 120 \$2,500(PC)
New Holland BC5070 \$17,900(PC)
New Holland BC5070 \$14,900(C)
New Holland 570 \$14,500(U)



Kioti.com



Experience the power of **KIOTI TRACTOR**

CS Series

0% UP TO 84 Months + NO PAYMENTS FOR 90 DAYS*

Meet the compact and powerful KIOTI® CS Series. With an ergonomic workstation, tight turning radius, and hydrostatic transmission, hard work has never been so easy, or fun. For a limited time, get 0% Financing up to 84 months plus no payments for 90 days* or choose up to \$2700 cash back* on the KIOTI® CS Series. Top this deal off with KIOTI's 6 year unlimited hour* industry leading warranty and you can't beat it. Learn more about the CS Series and this offer at your authorized KIOTI Tractor Dealer.

*Offer available January 1, 2018 – March 31, 2018. Cannot be combined with any other offer. Offer based on the purchase of eligible equipment defined in promotional program. Additional fees may apply. Pricing, payments and models may vary by dealer. Customers must take delivery prior to the end of the program period. Some customers will not qualify. Some restrictions apply. Financing subject to credit approval. Offer available on new equipment only. Prior purchases are not eligible. 6 Year Warranty for Non-Commercial, residential use only. 6 Year Warranty applies to CS, CK10, DK10 and NX model KIOTI tractors and must be purchased and registered between September 1, 2016 - June 30, 2018. Offer valid only at participating Dealers. Offer subject to change without notice. See your dealer for details. Pricing in USD. Program not available for consumer use transactions involving Kentucky consumers.

© 2018 KIOTI Tractor Company a Division of Daedong-USA, Inc.



LISBON
330-222-1521

PLAIN CITY
740-363-1341

UTICA
740-892-2831



THERE'S STRENGTH IN NUMBERS INTRODUCING THE NEW CASE SV340.

With superior high-flow hydraulics performance and a **3,400 lb rated operating capacity**, our new large-framed skid steer handles heavy loads and large attachments with ease. CaseCE.com/Alpha

New Case CTL's and SSL's

SR175
SV185
SR210
SR270
SV280
TR270
TR310
TV370



Used Case Skid CTL's and SSL's

12 Bobcat S650 \$22,000(PC)
13 Bobcat S650 \$32,000(PC)
13 Cat 236B \$27,500(C)
11 New Holland L220 \$19,900(L)
15 Volvo MC95C \$25,000 (L)
98 Case 1840 \$6,500(L)
04 Case 40XT \$18,600(PC)
07 Case 450 \$27,500(US)
12 Case SR150 \$14,900(U)
15 Case SR175 \$24,500(U)
12 Case SR200 \$19,000(L)
15 Case SR220 \$38,200(PC)
12 Case SR220 \$30,000(PC)
16 Case SR240 \$40,000(PC)
16 Case SR250 \$43,500(PC)
12 Case SV300 \$39,500(US)
14 Case TV380 \$46,500(US)



Used Mowers



00 John Deere GT235:54" deck, good condition, ready for spring (UL2604). **\$1,100**



13 Cub Cadet ZF48S:48" deck, steering wheel zero turn, 275 hrs. (UL2434) **\$3,950 (U)**



99 Grasshopper 720K:20hp Kohler, 1356 hrs, 60" deck, bar tires. (UL2005). **\$3,200 (C)**



03 Grasshopper 618: 52" deck with metal collector, 18hp Kohler (UL2451). . . **\$3,500(PC)**



Landpride Z52 Razor:52" deck, honda eng, rebuilt deck (UL2480). **\$2,100 (PC)**



Hustler X-One:52" deck, suspension seat, 420 hrs, serviced, Kawasaki (UL2452). . . **\$6,700 (PC)**



12 Husqvarna R220T: 48" out front mower deck, articulated frame, steering wheel.(UL2189) **\$2,195 (D)**



Husqvarna YTH22V46: 46" deck, 3 bucket collection system, 96 hrs (UL2456). . . **\$1,300(PC)**



06 John Deere X324:704 hrs, 48" deck, all wheel steer (UL2084) **\$2,850 (C)**



15 Grasshopper 225K:150hrs, 61" deck, 25 hp Kohler Command, , Warranty (UL2496). . **\$8,300 (PC)**



Examrk Lazer Z: 831 hrs, 29 jp liquid cooled Kawasaki, 60" deck . . . (UL2029). **\$5,300 (C)**



Kubota GR2000: 281 hrs, 48" deck, 4 wheel drive. (UL0417). **\$3,600(U)**



10 Bob-Cat Predator Pro 72: 340hrs, 72" deck (UL5072) **\$9,500 (U)**



13 Grasshopper 223: 468hrs, 23hp Kohler Command, 52" rear discharge deck (UL2087) **\$5,300 (C)**



06 Gravely 260Z:536 hrs, 27hp Kohler Command, hydraulic deck lift, 60" deck . (UL2083) **\$4,500 (C)**



John Deere X540: 142hrs, serviced, 54" hydraulic deck and steering (UL2457) . **\$5,700(D)**



Kubota ZD326RP60: 237 hrs, 60" rear discharge deck just serviced . . (UL1329) **\$8,495 (D)**



10 Exmark LZA20KAX5: 250 hrs, new deck belt and idler pulley's, 20 HP Kawasaki engine . . **\$4,600 (PC)**



14 John Deere Z920M: 590 hrs, 60" 7 iron deck, suspension seat, fully serviced. (UL2074) **\$6,990 (C)**



13 John Deere X730: 277 hrs, 60" deck, Liquid cooled efi, power lift (UL2459). **\$8,500(PC)**



Kubota®

**0% A.P.R.
FINANCING
FOR 84 MONTHS***

OR

**\$700
CUSTOMER
INSTANT REBATE****



Grand L Series

**CIRCLEVILLE
21224 US RT 23 N
740-474-2181**

**DELAWARE
5565 SR 37 E
740-513-4842**

**UPPER SANDUSKY
375 MALABAR DR
419-209-3876**

*20% Down, 0% A.P.R. financing for up to 84 months on purchases of select new Kubota L Series equipment from participating dealers' in-stock inventory is available to qualified purchasers through Kubota Credit Corporation, U.S.A.; subject to credit approval. Example: 84 monthly payments of \$11.90 per \$1,000 financed. **Customer instant rebates of \$700 are available on qualifying cash or standard rate finance purchases of new Kubota Grand L60 Series equipment from participating dealers' stock inventory. Rebate is not available with 0% A.P.R. or other promotional financing. Some exceptions apply. Offers expire 3/31/18. See us or go to KubotaUSA.com for more information. Optional equipment may be shown.

KubotaUSA.com



© Kubota Tractor Corporation, 2018

Used Combines



13 JD S660: SUC819, 2WD, 800 Drive tires, 855 eng, 550 sep, Goodyears
.....**\$210,000(US)**



02 Case IH 2388: UC1360, 3270 ENG, 2325 sep, ft, chopper, 800 drive tires, maver ext, yield mon
.....**\$67,000(PC)**



98 JOHN DEERE 9610: UC346, 4WD, SPREADER, DAM, CONTOUR MASTER**\$47,000(C)**



11 Case IH 7120: UUC274, 1350 eng, 975 sep hr 4WD, 2 speed, FT, RT, Pro 600, 900 tires
.....**\$179,000(U)**



90 Case IH 1680: UC0846, 4WD, grain loss monitor, rear hydraulic chaff spreader, 30.5x32 drive tires.
.....**\$24,500(US)**



10 Case IH 7120: UC8578, 2WD, folding gt cover, duals, ext wear cone, 850 sep, 1350 sep, auto steer ready
.....**\$169,000(PC)**



13 Case IH 6130: UC2612, singles, lt, rt, folding grain tank covers, 4WD, just coming in . Stock Photo.
.....**\$189,500(U)**



10 Case IH 8120: UC7871, duals, chopper, lt, rt, folding grain tank covers, power guide axle
.....**\$169,900(U)**



13 Case IH 8230: CUC047, shop certified, 2WD, 1067 eng, 830 sep, 40ft auger with pivoting spool, Duals
.....**\$245,000(C)**



08 Gleaner R65: SUC808, 4WD, 2175 eng, 1550 sep, rebuilt 3 years ago, cdf rotor, field star system **\$122,500(US)**



11 Gleaner S67: SUC804, 2WD, 1320 eng, 900 sep, power fold bin, variable speed header drive, HID's Duals
.....**\$172,0000(US)**



06 JD 9560STS: UC5345, 2300 sep, 3200 eng, 4WD, 30.5 drive tires, 2 owner, well maintained.
.....**\$87,500(PC)**

Case IH 1020 20'- 30', 5 to choose from, **\$5,400- \$18,500**
Case IH 2020 30' - 35', 9 to choose from, **\$7,500- \$13,500**
Case IH 2162 35' 4 to choose from, **\$35,000 - \$51,000**
Case IH 3020 35', 3 to choose from, **\$24,000-\$34,500**
John Deere 635F 2014 **\$31,000**

Unmatched Flexibility

TruFlex Razor

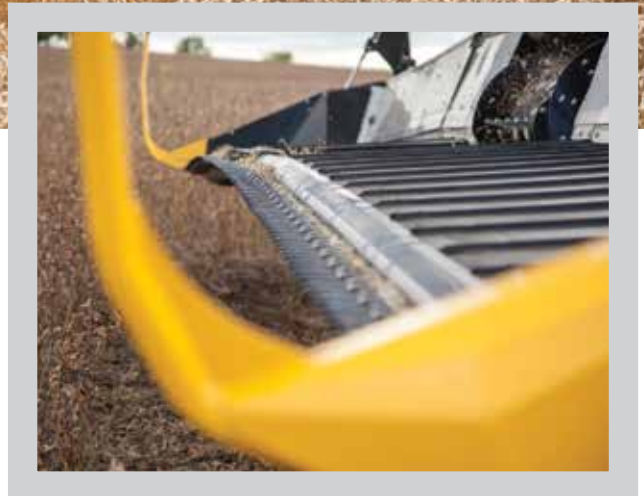
GERINGHOFF

Evolution Ag



The Most Flexible Draper on the Market

- Flexible Frame
- Flexible Cutter Bar
- Three Section Reel
- Optional Integrated Air System



www.evolutionagllc.com



Bonus Bucks

Our Customers Feed the World

Enroll Today!

1. Schedule a pre-season inspection of your combine or planter with your local Evolution Ag Service Department.
2. Once the inspection has been completed you will receive a full report of the findings and recommendations.
3. Schedule your unit into one of our service shops for the needed repairs and purchase all replacement parts from Evolution Ag.
4. Once the work has been completed your unit will be "Shop Certified" for the current year and you will also receive a coupon that can be used on a new trade with an Evolution Ag Salesperson.

We want to earn your business!

Circleville: 740-474-2181 Lisbon: 330-222-1521 Plain City: 740-363-1341

Upper Sandusky: 419-294-3876 Utica: 740-892-2831

COUPONS

Case IH Combines

1997 and prior	\$300
1998 - 2008	\$500
2009 - 2011	\$750
2012 and newer	\$850

Case IH & Kinze Planters (8 row or larger)

2006 and prior	\$500
2007 and newer	\$1000

**Inspections are required each year.*

Coupons maintain their value up to five years if inspections are completed each year. A missed annual inspection cancels the value of coupons previously issued.

**Coupons earned can be redeemed off of the agreed trade price for a Case IH combine, planter, or Kinze planter.*

**Maximum value of all coupons applied to any single trade is \$4,250.*

SPRING READINESS SALES EVENT

Set your focus on precision and productivity—with exclusive offers during this year's **Spring Readiness Sales Event**. Offers valid January 1, 2018 through March 31, 2018.



90-DAY SPECIAL FINANCING¹

Take advantage of 90-day special financing on qualifying purchases of \$1,500 or more when you use the CNH Industrial Capital Productivity Plus[®] Account.

GET 6 EXTRA MONTHS OF PARTS WARRANTY PROTECTION²

A 6-month extended parts warranty is available with an existing 6-month warranty on new and remanufactured parts when installed by a Case IH dealer.

\$50 REWARD CARD ON MAINTENANCE PARTS²

Earn a \$50 reward card on a \$500 purchase of any combination of genuine Case IH lubricants, coolants, filters and Fleetguard[®] all-makes filters.

FREE KNOCK-ON ADAPTER²

Receive a free knock-on adapter instantly with each Earth Metal[®] Maxxi-Grip[™] or Maxxi-Point Plus[™] sweep purchased.

FREE DRUM OF THIRTYPLUS[™] HAY PRESEVATIVE²

Get a 50-gallon drum with the purchase of an automatic applicator system, or get a 13-gallon mini drum with the purchase of an electronic applicator system.

Hurry in—offers end March 31, 2018.



¹Subject to credit approval. Terms and conditions apply. Ask an associate for details.

²See your local Case IH dealer for full details and qualifications.

©2018 CNH Industrial America LLC. All rights reserved. Case IH and CNH Industrial Capital are trademarks registered in the United States and many other countries, owned by or licensed to CNH Industrial N.V., its subsidiaries or affiliates. CNH Industrial Genuine Parts is a trademark in the United States and many other countries, owned by or licensed to CNH Industrial N.V., its subsidiaries or affiliates. Productivity Plus[®] is licensed or sublicensed to Citibank, N.A. in the United States and to Citi Cards Canada Inc. in Canada.

MRC

Customer Appreciation Days

Feb 19th - 23rd at Circleville, Plain City, Upper Sandusky and Utica

Feb 26th- March 3rd at Lisbon



Evolution Ag LLC
13275 US Route 42 N
Plain City, OH 43064

PRSR STD
U.S. POSTAGE
PAID
BUCYRUS, OHIO
PERMIT NO. 12

Customer Appreciation Days

Feb 19th - 23rd Circleville, Plain City, Upper Sandusky, Utica
Feb 23rd - March 3rd Lisbon



Check out our **NEW** website
www.evolutionagllc.com

STRONG. SMART. SIMPLE.

For 60 years, Case IH Steiger® tractors have delivered. With sustained performance driven by productive innovation, like the new **CVXDrive™ continuously variable transmission**. CVXDrive seamlessly finds the perfect balance of power and efficiency for every application, from planting to laying field drainage tile. It helps you rethink what's possible. Because today, it all makes a difference — power, performance, productivity and comfort. And it all needs to work together. Steiger tractors put the most powerful equipment, built and backed by the right expertise, to work for you. See how the Case IH legacy can make a difference for you at your local Case IH dealer or at caseih.com/steiger.