



FORMULAS AND FUNCTIONS

Microsoft® Excel® 2013

MAKE FINANCIAL DECISIONS
MODEL YOUR BUSINESS
TRACK TRENDS
TROUBLESHOOT FORMULAS
MAKE FORECASTS
SOLVE COMPLEX PROBLEMS
BUILD SPREADSHEETS FASTER
IMPROVE WORKBOOK RELIABILITY

que®

FREE SAMPLE CHAPTER



SHARE WITH OTHERS



Excel® 2013 Formulas and Functions

Paul McFedries

que®

800 East 96th Street,
Indianapolis, Indiana
46240
USA

Contents at a Glance

Introduction	
Part I Mastering Excel Ranges and Formulas	
1 Getting the Most Out of Ranges.....	5
2 Using Range Names.....	37
3 Building Basic Formulas.....	53
4 Creating Advanced Formulas.....	87
5 Troubleshooting Formulas.....	111
Part II Harnessing the Power of Functions	
6 Understanding Functions.....	129
7 Working with Text Functions.....	139
8 Working with Logical and Information Functions.....	163
9 Working with Lookup Functions.....	191
10 Working with Date and Time Functions.....	209
11 Working with Math Functions.....	237
12 Working with Statistical Functions.....	257
Part III Building Business Models	
13 Analyzing Data with Tables.....	289
14 Analyzing Data with PivotTables.....	321
15 Using Excel's Business-Modeling Tools.....	345
16 Using Regression to Track Trends and Make Forecasts.....	367
17 Solving Complex Problems with Solver.....	405
Part IV Building Financial Formulas	
18 Building Loan Formulas.....	427
19 Building Investment Formulas.....	445
20 Building Discount Formulas.....	459
Index.....	479

Excel® 2013 Formulas and Functions

Copyright © 2013 by Que Publishing

All rights reserved. No part of this book shall be reproduced, stored in a retrieval system, or transmitted by any means, electronic, mechanical, photocopying, recording, or otherwise, without written permission from the publisher. No patent liability is assumed with respect to the use of the information contained herein. Although every precaution has been taken in the preparation of this book, the publisher and author assume no responsibility for errors or omissions. Nor is any liability assumed for damages resulting from the use of the information contained herein.

ISBN-13: 978-0-7897-4867-6

ISBN-10: 0-7897-4867-3

Library of Congress Cataloging-in-Publication data is on file.

Printed in the United States of America

First Printing: February 2013

Trademarks

All terms mentioned in this book that are known to be trademarks or service marks have been appropriately capitalized. Que Publishing cannot attest to the accuracy of this information. Use of a term in this book should not be regarded as affecting the validity of any trademark or service mark.

Excel is a registered trademark of Microsoft Corporation.

Warning and Disclaimer

Every effort has been made to make this book as complete and as accurate as possible, but no warranty or fitness is implied. The information provided is on an “as is” basis. The author and the publisher shall have neither liability nor responsibility to any person or entity with respect to any loss or damages arising from the information contained in this book.

Bulk Sales

Que Publishing offers excellent discounts on this book when ordered in quantity for bulk purchases or special sales. For more information, please contact

U.S. Corporate and Government Sales
1-800-382-3419
corpsales@pearsontechgroup.com

For sales outside of the U.S., please contact

International Sales
international@pearsoned.com

Editor-in-Chief

Greg Wiegand

Executive Editor

Loretta Yates

Development Editor

Charlotte Kughen

Managing Editor

Sandra Schroeder

Senior Project Editor

Tonya Simpson

Copy Editor

Bart Reed

Indexer

Cheryl Lenser

Proofreader

Megan Wade

Technical Editor

Bob Umlas

Editorial Assistant

Cindy Teeters

Book Designer

Anne Jones

Compositor

Bronkella Publishing

Contents

Introduction

What's in the Book.....	2
This Book's Special Features.....	2

Part I: Mastering Excel Ranges and Formulas

1 Getting the Most Out of Ranges.....	5
Advanced Range-Selection Techniques.....	5
Mouse Range-Selection Tricks.....	6
Keyboard Range-Selection Tricks.....	7
Working with 3D Ranges.....	7
Selecting a Range Using Go To.....	8
Using the Go To Special Dialog Box.....	9
Data Entry in a Range.....	14
Filling a Range.....	14
Using the Fill Handle.....	15
Flash-Filling a Range.....	18
Creating a Series.....	20
Advanced Range Copying.....	22
Copying Selected Cell Attributes.....	22
Combining Two Ranges Arithmetically.....	23
Transposing Rows and Columns.....	24
Clearing a Range.....	25
Applying Conditional Formatting to a Range.....	25
Creating Highlight Cells Rules.....	26
Creating Top/Bottom Rules.....	28
Adding Data Bars.....	29
Adding Color Scales.....	32
Adding Icon Sets.....	33
From Here.....	35
2 Using Range Names.....	37
Defining a Range Name.....	38
Working with the Name Box.....	38
Using the New Name Dialog Box.....	39
Changing the Scope to Define Sheet-Level Names.....	41
Using Worksheet Text to Define Names.....	41
Naming Constants.....	43
Working with Range Names.....	44
Referring to a Range Name.....	44
Working with Name AutoComplete.....	46
Navigating Using Range Names.....	47
Pasting a List of Range Names in a Worksheet.....	47

Displaying the Name Manager	47
Filtering Names	48
Editing a Range Name's Coordinates	48
Adjusting Range Name Coordinates Automatically	48
Changing a Range Name	50
Deleting a Range Name	50
Using Names with the Intersection Operator	50
From Here	51
3 Building Basic Formulas	53
Understanding Formula Basics	53
Formula Limits in Excel 2013	54
Entering and Editing Formulas	54
Using Arithmetic Formulas	55
Using Comparison Formulas	56
Using Text Formulas	57
Using Reference Formulas	57
Understanding Operator Precedence	57
The Order of Precedence	58
Controlling the Order of Precedence	58
Controlling Worksheet Calculation	60
Copying and Moving Formulas	62
Understanding Relative Reference Format	62
Understanding Absolute Reference Format	64
Copying a Formula Without Adjusting Relative References	64
Displaying Worksheet Formulas	65
Displaying All Worksheet Formulas	65
Displaying a Cell's Formula Using FORMULATEXT ()	65
Converting a Formula to a Value	66
Working with Range Names in Formulas	67
Pasting a Name into a Formula	67
Applying Names to Formulas	68
Naming Formulas	70
Working with Links in Formulas	71
Understanding External References	71
Updating Links	73
Changing the Link Source	74
Formatting Numbers, Dates, and Times	74
Numeric Display Formats	74
Date and Time Display Formats	82
Deleting Custom Formats	85
From Here	86

4	Creating Advanced Formulas	87
	Working with Arrays	87
	Using Array Formulas	88
	Using Array Constants	90
	Functions That Use or Return Arrays	91
	Using Iteration and Circular References	92
	Consolidating Multisheet Data	94
	Consolidating by Position	95
	Consolidating by Category	98
	Applying Data-Validation Rules to Cells	100
	Using Dialog Box Controls on a Worksheet	102
	Displaying the Developer Tab	102
	Using the Form Controls	103
	Adding a Control to a Worksheet	103
	Linking a Control to a Cell Value	104
	Understanding the Worksheet Controls	104
	From Here	109
5	Troubleshooting Formulas	111
	Understanding Excel's Error Values	112
	#DIV / 0 !	112
	#N / A	113
	#NAME ?	113
	Case Study: Avoiding #NAME ? Errors When Deleting Range Names	114
	#NULL !	115
	#NUM !	115
	#REF !	115
	#VALUE !	116
	Fixing Other Formula Errors	116
	Missing or Mismatched Parentheses	116
	Erroneous Formula Results	117
	Fixing Circular References	118
	Handling Formula Errors with IFERROR ()	119
	Using the Formula Error Checker	120
	Choosing an Error Action	120
	Setting Error Checker Options	121
	Auditing a Worksheet	124
	Understanding Auditing	124
	Tracing Cell Precedents	124
	Tracing Cell Dependents	125
	Tracing Cell Errors	125
	Removing Tracer Arrows	125

Evaluating Formulas.....	126
Watching Cell Values.....	126
From Here.....	127

Part II: Harnessing the Power of Functions

6 Understanding Functions.....	129
About Excel’s Functions.....	130
The Structure of a Function.....	130
Typing a Function into a Formula.....	132
Using the Insert Function Feature.....	134
Loading the Analysis ToolPak.....	136
From Here.....	136
7 Working with Text Functions.....	139
Excel’s Text Functions.....	139
Working with Characters and Codes.....	141
The CHAR () Function.....	141
The CODE () Function.....	144
Converting Text.....	144
The LOWER () Function.....	145
The UPPER () Function.....	145
The PROPER () Function.....	145
The DECIMAL () Function.....	145
The NUMBERVALUE () Function.....	146
Formatting Text.....	146
The DOLLAR () Function.....	147
The FIXED () Function.....	147
The TEXT () Function.....	148
Displaying When a Workbook Was Last Updated.....	148
Manipulating Text.....	149
Removing Unwanted Characters from a String.....	149
The TRIM () Function.....	149
The CLEAN () Function.....	150
The REPT () Function: Repeating a Character.....	150
Padding a Cell.....	151
Building Text Charts.....	151
Extracting a Substring.....	152
The LEFT () Function.....	153
The RIGHT () Function.....	153
The MID () Function.....	153
Converting Text to Sentence Case.....	153
A Date-Conversion Formula.....	154
Case Study: Generating Account Numbers.....	154

Searching for Substrings.....	155
The FIND () and SEARCH () Functions	155
Extracting a First Name or Last Name	156
Extracting First Name, Last Name, and Middle Initial	157
Determining the Column Letter	158
Substituting One Substring for Another.....	159
The REPLACE () Function	159
The SUBSTITUTE () Function	160
Removing a Character from a String	160
Removing Two Different Characters from a String	161
Case Study: Generating Account Numbers, Part II.....	161
Removing Line Feeds	161
From Here.....	162
8 Working with Logical and Information Functions	163
Adding Intelligence with Logical Functions	163
Using the IF () Function.....	164
Performing Multiple Logical Tests.....	167
Combining Logical Functions with Arrays.....	172
Case Study: Building an Accounts Receivable Aging Worksheet	178
Calculating a Smarter Due Date	179
Aging Overdue Invoices.....	180
Getting Data with Information Functions.....	181
The CELL () Function.....	182
The ERROR . TYPE () Function	184
The INFO () Function.....	185
The SHEET () and SHEETS () Functions.....	186
The IS Functions.....	187
From Here.....	189
9 Working with Lookup Functions.....	191
Understanding Lookup Tables	192
The CHOOSE () Function.....	193
Determining the Name of the Day of the Week.....	193
Determining the Month of the Fiscal Year.....	194
Calculating Weighted Questionnaire Results.....	195
Integrating CHOOSE () and Worksheet Option Buttons.....	195
Looking Up Values in Tables.....	196
The VLOOKUP () Function	196
The HLOOKUP () Function	197
Returning a Customer Discount Rate with a Range Lookup.....	198
Returning a Tax Rate with a Range Lookup.....	199
Finding Exact Matches	200
Advanced Lookup Operations.....	202
From Here.....	207

10 Working with Date and Time Functions	209
How Excel Deals with Dates and Times.....	209
Entering Dates and Times.....	210
Excel and Two-Digit Years.....	211
Using Excel's Date Functions.....	212
Returning a Date.....	214
Returning Parts of a Date.....	215
Calculating the Difference Between Two Dates.....	224
Using Excel's Time Functions.....	229
Returning a Time.....	229
Returning Parts of a Time.....	231
Calculating the Difference Between Two Times.....	233
Case Study: Building an Employee Time Sheet.....	233
Entering the Time Sheet Data.....	234
Calculating the Daily Hours Worked.....	234
Calculating the Weekly Hours Worked.....	236
Calculating the Weekly Pay.....	236
From Here.....	236
11 Working with Math Functions	237
Understanding Excel's Rounding Functions.....	241
The ROUND () Function.....	241
The MROUND () Function.....	242
The ROUNDDOWN () and ROUNDUP () Functions.....	242
The CEILING . MATH () and FLOOR . MATH () Functions.....	243
Determining the Fiscal Quarter in Which a Date Falls.....	243
Calculating Easter Dates.....	244
The EVEN () and ODD () Functions.....	244
The INT () and TRUNC () Functions.....	245
Using Rounding to Prevent Calculation Errors.....	245
Setting Price Points.....	246
Case Study: Rounding Billable Time.....	247
Summing Values.....	247
The SUM () Function.....	247
Calculating Cumulative Totals.....	248
Summing Only the Positive or Negative Values in a Range.....	249
The MOD () Function.....	249
A Better Formula for Time Differences.....	250
Summing Every <i>n</i> th Row.....	250
Determining Whether a Year Is a Leap Year.....	251
Creating Ledger Shading.....	251
Generating Random Numbers.....	252
The RAND () Function.....	253
The RANDBETWEEN () Function.....	255
From Here.....	255

12 Working with Statistical Functions	257
Understanding Descriptive Statistics.....	260
Counting Items with the COUNT () Function.....	261
Calculating Averages.....	261
The AVERAGE () Function.....	261
The MEDIAN () Function.....	262
The MODE () Function.....	262
Calculating the Weighted Mean.....	263
Calculating Extreme Values.....	264
The MAX () and MIN () Functions.....	264
The LARGE () and SMALL () Functions.....	265
Performing Calculations on the Top k Values.....	265
Performing Calculations on the Bottom k Values.....	266
Calculating Measures of Variation.....	266
Calculating the Range.....	267
Calculating the Variance.....	267
Calculating the Standard Deviation.....	268
Working with Frequency Distributions.....	270
The FREQUENCY () Function.....	270
Understanding the Normal Distribution and the NORMDIST () Function.....	271
The Shape of the Curve I: The SKEW () Function.....	273
The Shape of the Curve II: The KURT () Function.....	274
Using the Analysis ToolPak Statistical Tools.....	275
Using the Descriptive Statistics Tool.....	278
Determining the Correlation Between Data.....	279
Working with Histograms.....	282
Using the Random Number Generation Tool.....	283
Working with Rank and Percentile.....	286
From Here.....	288
 Part III: Building Business Models	
13 Analyzing Data with Tables	289
Converting a Range to a Table.....	291
Basic Table Operations.....	292
Sorting a Table.....	293
Performing a More Complex Sort.....	294
Sorting a Table in Natural Order.....	295
Sorting on Part of a Field.....	296
Sorting Without Articles.....	297
Filtering Table Data.....	298
Using Filter Lists to Filter a Table.....	298
Using Complex Criteria to Filter a Table.....	301
Entering Computed Criteria.....	305
Copying Filtered Data to a Different Range.....	306

Referencing Tables in Formulas	307
Using Table Specifiers.....	307
Entering Table Formulas.....	309
Excel's Table Functions.....	310
About Table Functions.....	310
Table Functions That Don't Require a Criteria Range.....	311
Table Functions That Accept Multiple Criteria.....	313
Table Functions That Require a Criteria Range.....	315
Case Study: Applying Statistical Table Functions to a Defects Database.....	318
From Here.....	320
14 Analyzing Data with PivotTables.....	321
What Are PivotTables?.....	321
How PivotTables Work.....	322
Some PivotTable Terms.....	324
Building PivotTables.....	324
Building a PivotTable from a Table or Range.....	324
Building a PivotTable from an External Database.....	327
Working with and Customizing a PivotTable.....	328
Working with PivotTable Subtotals.....	329
Hiding PivotTable Grand Totals.....	329
Hiding PivotTable Subtotals.....	330
Customizing the Subtotal Calculation.....	330
Changing the Data Field Summary Calculation.....	330
Using a Difference Summary Calculation.....	331
Using a Percentage Summary Calculation.....	333
Using a Running Total Summary Calculation.....	336
Using an Index Summary Calculation.....	337
Creating Custom PivotTable Calculations.....	338
Creating a Calculated Field.....	340
Creating a Calculated Item.....	341
Case Study: Using PivotTable Results in a Worksheet Formula.....	343
From Here.....	344
15 Using Excel's Business-Modeling Tools.....	345
Using What-If Analysis.....	345
Setting Up a One-Input Data Table.....	346
Adding More Formulas to the Input Table.....	348
Setting Up a Two-Input Table.....	349
Editing a Data Table.....	351
Working with Goal Seek.....	351
How Does Goal Seek Work?.....	351
Running Goal Seek.....	352
Optimizing Product Margin.....	354
A Note About Goal Seek's Approximations.....	355

Performing a Break-Even Analysis.....	356
Solving Algebraic Equations.....	357
Working with Scenarios.....	358
Understanding Scenarios.....	358
Setting Up Your Worksheet for Scenarios.....	359
Adding a Scenario.....	360
Displaying a Scenario.....	361
Editing a Scenario.....	362
Merging Scenarios.....	363
Generating a Summary Report.....	363
Deleting a Scenario.....	365
From Here.....	365
16 Using Regression to Track Trends and Make Forecasts.....	367
Choosing a Regression Method.....	368
Using Simple Regression on Linear Data.....	368
Analyzing Trends Using Best-Fit Lines.....	369
Making Forecasts.....	377
Case Study: Trend Analysis and Forecasting for a Seasonal Sales Model.....	382
About the Forecast Workbook.....	382
Calculating a Normal Trend.....	383
Calculating the Forecast Trend.....	384
Calculating the Seasonal Trend.....	385
Computing the Monthly Seasonal Indexes.....	386
Calculating the Deseasoned Monthly Values.....	387
Calculating the Deseasoned Trend.....	388
Calculating the Reseasoned Trend.....	388
Calculating the Seasonal Forecast.....	388
Working with Quarterly Data.....	389
Using Simple Regression on Nonlinear Data.....	389
Working with an Exponential Trend.....	389
Working with a Logarithmic Trend.....	393
Working with a Power Trend.....	396
Using Polynomial Regression Analysis.....	399
Using Multiple Regression Analysis.....	402
From Here.....	404
17 Solving Complex Problems with Solver.....	405
Some Background on Solver.....	405
The Advantages of Solver.....	406
When Do You Use Solver?.....	406
Loading Solver.....	407
Using Solver.....	407
Adding Constraints.....	410
Saving a Solution as a Scenario.....	412

Setting Other Solver Options.....	412
Selecting the Method Solver Uses.....	413
Controlling How Solver Works.....	413
Working with Solver Models.....	416
Making Sense of Solver’s Messages.....	418
Case Study: Solving the Transportation Problem.....	419
Displaying Solver’s Reports.....	421
The Answer Report.....	421
The Sensitivity Report.....	423
The Limits Report.....	424
From Here.....	425

Part IV: Building Financial Formulas

18 Building Loan Formulas.....	427
Understanding the Time Value of Money.....	427
Calculating the Loan Payment.....	429
Loan Payment Analysis.....	429
Working with a Balloon Loan.....	430
Calculating Interest Costs, Part I.....	431
Calculating the Principal and Interest.....	431
Calculating Interest Costs, Part 2.....	432
Calculating Cumulative Principal and Interest.....	433
Building a Loan Amortization Schedule.....	434
Building a Fixed-Rate Amortization Schedule.....	434
Building a Dynamic Amortization Schedule.....	435
Calculating the Term of the Loan.....	437
Calculating the Interest Rate Required for a Loan.....	439
Calculating How Much You Can Borrow.....	440
Case Study: Working with Mortgages.....	441
Building a Variable-Rate Mortgage Amortization Schedule.....	441
Allowing for Mortgage Principal Paydowns.....	443
From Here.....	444
19 Building Investment Formulas.....	445
Working with Interest Rates.....	445
Understanding Compound Interest.....	446
Nominal Versus Effective Interest.....	446
Converting Between the Nominal Rate and the Effective Rate.....	447
Calculating the Future Value.....	448
The Future Value of a Lump Sum.....	448
The Future Value of a Series of Deposits.....	449
The Future Value of a Lump Sum Plus Deposits.....	450

Working Toward an Investment Goal.....	450
Calculating the Required Interest Rate.....	450
Calculating the Required Number of Periods.....	451
Calculating the Required Regular Deposit.....	452
Calculating the Required Initial Deposit.....	453
Calculating the Future Value with Varying Interest Rates.....	453
Case Study: Building an Investment Schedule.....	454
From Here.....	457
20 Building Discount Formulas.....	459
Calculating the Present Value.....	460
Taking Inflation into Account.....	460
Calculating Present Value Using $PV()$	461
Income Investing Versus Purchasing a Rental Property.....	462
Buying Versus Leasing.....	463
Discounting Cash Flows.....	464
Calculating the Net Present Value.....	465
Calculating Net Present Value Using $NPV()$	466
Net Present Value with Varying Cash Flows.....	467
Net Present Value with Nonperiodic Cash Flows.....	468
Calculating the Payback Period.....	469
Simple Undiscounted Payback Period.....	469
Exact Undiscounted Payback Point.....	470
Discounted Payback Period.....	471
Calculating the Internal Rate of Return.....	471
Using the $IRR()$ Function.....	472
Calculating the Internal Rate of Return for Nonperiodic Cash Flows.....	472
Calculating Multiple Internal Rates of Return.....	473
Case Study: Publishing a Book.....	474
Per-Unit Constants.....	474
Operating Costs and Sales.....	474
Cash Flow.....	476
Cash-Flow Analysis.....	476
From Here.....	477
Index.....	479

About the Author

Paul McFedries is an Excel expert and full-time technical writer. Paul has been authoring computer books since 1991 and has more than 80 books to his credit, which combined have sold more than four million copies worldwide. His titles include the Que Publishing books *Windows 8 In Depth* (with coauthor Brian Knittel), *PCs for Grownups*, and *Tweak It and Freak It: A Killer Guide to Making Windows Run Your Way*, as well as the Sams Publishing book *Windows 7 Unleashed*. Paul is also the proprietor of Word Spy (www.wordspy.com), a website devoted to *lexpionage*, the sleuthing of new words and phrases that have entered the English language. Please drop by Paul's personal website at www.mcfedries.com or follow Paul on Twitter at twitter.com/paulmcf and twitter.com/wordspy.

Dedication

To Karen

Acknowledgments

Substitute damn every time you're inclined to write very; your editor will delete it and the writing will be just as it should be.

—Mark Twain

I didn't follow Mark Twain's advice in this book (the word *very* appears throughout), but if my writing still appears "just as it should be," then it's because of the keen minds and sharp linguistic eyes of the editors at Que. Near the front of the book you'll find a long list of the hard-working professionals whose fingers made it into this particular paper pie. However, there are a few folks who I worked with directly, so I'd like to single them out for extra credit. A big, heaping helping of thanks goes out to acquisitions editor Loretta Yates, development editor Charlotte Kughen, project editor Tonya Simpson, copy editor Bart Reed, and technical editor Bob Umlas.

We Want to Hear from You!

As the reader of this book, *you* are our most important critic and commentator. We value your opinion and want to know what we're doing right, what we could do better, what areas you'd like to see us publish in, and any other words of wisdom you're willing to pass our way.

We welcome your comments. You can email or write to let us know what you did or didn't like about this book—as well as what we can do to make our books better.

Please note that we cannot help you with technical problems related to the topic of this book.

When you write, please be sure to include this book's title and author as well as your name and email address. We will carefully review your comments and share them with the author and editors who worked on the book.

Email: feedback@quepublishing.com

Mail: Que Publishing
ATTN: Reader Feedback
800 East 96th Street
Indianapolis, IN 46240 USA

Reader Services

Visit our website and register this book at quepublishing.com/register for convenient access to any updates, downloads, or errata that might be available for this book.

INTRODUCTION

The old 80/20 rule for software—that 80% of a program’s users use only 20% of a program’s features—doesn’t apply to Microsoft Excel. Instead, this program probably operates under what could be called the 95/5 rule: Ninety-five percent of Excel users use a mere 5% of the program’s power. On the other hand, most people *know* that they could be getting more out of Excel if they could only get a leg up on building formulas and using functions. Unfortunately, this side of Excel appears complex and intimidating to the uninitiated, shrouded as it is in the mysteries of mathematics, finance, and impenetrable spreadsheet jargon.

If this sounds like the situation you find yourself in, and if you’re a businessperson who *needs* to use Excel as an everyday part of your job, you’ve come to the right book. In *Excel 2013 Formulas and Functions*, I demystify the building of worksheet formulas and present the most useful of Excel’s many functions in an accessible, jargon-free way. This book not only takes you through Excel’s intermediate and advanced formula-building features, but also tells you *why* these features are useful to you and shows you *how* to use them in everyday situations and real-world models. This book does all this with no-nonsense, step-by-step tutorials and lots of practical, useful examples aimed directly at business users.

Even if you’ve never been able to get Excel to do much beyond storing data and adding a couple of numbers, you’ll find this book to your liking. I show you how to build useful, powerful formulas from the ground up, so no experience with Excel formulas and functions is necessary.

What’s in the Book2

This Book’s Special Features.....2



What's in the Book

This book isn't meant to be read from cover to cover, although you're certainly free to do just that if the mood strikes you. Instead, most of the chapters are set up as self-contained units that you can dip into at will to extract whatever nuggets of information you need. However, if you're a relatively new Excel user, I suggest starting with Chapters 1, "Getting the Most Out of Ranges"; 2, "Using Range Names"; 3, "Building Basic Formulas"; and 6, "Understanding Functions," to ensure that you have a thorough grounding in the fundamentals of Excel ranges, formulas, and functions.

The book is divided into four main parts. To give you the big picture before diving in, here's a summary of what you'll find in each part:

- **Part I, "Mastering Excel Ranges and Formulas"**—The five chapters in Part I tell you just about everything you need to know about building formulas in Excel. Starting with a thorough look at ranges (crucial for mastering formulas), this part also discusses operators, expressions, advanced formula features, and formula-troubleshooting techniques.
- **Part II, "Harnessing the Power of Functions"**—Functions take your formulas to the next level, and you'll learn all about them in Part II. After you see how to use functions in your formulas, you examine the eight main function categories—text, logical, information, lookup, date, time, math, and statistical. In each case, I tell you how to use the functions and give you lots of practical examples that show you how you can use the functions in everyday business situations.
- **Part III, "Building Business Models"**—The five chapters in Part III are all business as they examine various facets of building useful and robust business models. You learn how to analyze data with Excel tables and PivotTables, how to use what-if analysis and Excel's Goal Seek and scenarios features, how to use powerful regression-analysis techniques to track trends and make forecasts, and how to use the amazing Solver feature to solve complex problems.
- **Part IV, "Building Financial Formulas"**—The book finishes with more business goodies related to performing financial wizardry with Excel. You learn techniques and functions for amortizing loans, analyzing investments, and using discounting for business case and cash-flow analysis.

This Book's Special Features

Excel 2013 Formulas and Functions is designed to give you the information you need without making you wade through ponderous explanations and interminable technical background. To make your life easier, this book includes various features and conventions that help you get the most out of the book and Excel itself:

- **Steps**—Throughout the book, each Excel task is summarized in step-by-step procedures.

- **Things you type**—Whenever I suggest that you type something, what you type appears in a **bold** font.
- **Commands**—I use the following style for Excel menu commands: **File**, **O**pen. This means that you pull down the **F**ile menu and select the **O**pen command.
- **Dialog box controls**—Dialog box controls have underlined accelerator keys: **C**lose.
- **Functions**—Excel worksheet functions appear in capital letters and are followed by parentheses: **SUM**(). When I list the arguments you can use with a function, they appear in italics to indicate that they're placeholders you replace with actual values; also, optional arguments appear surrounded by square brackets: **CELL**(*info_type* [, *reference*]).
- **Code-continuation character** (↵)—When a formula is too long to fit on one line of this book, it's broken at a convenient place, and the code-continuation character appears at the beginning of the next line.

This book also uses the following boxes to draw your attention to important (or merely interesting) information.

NOTE

The Note box presents asides that give you more information about the topic under discussion. These tidbits provide extra insights that give you a better understanding of the task at hand.

TIP

The Tip box tells you about Excel methods that are easier, faster, or more efficient than the standard methods.

CAUTION

The all-important Caution box tells you about potential accidents waiting to happen. There are always ways to mess things up when you're working with computers. These boxes help you avoid at least some of the pitfalls.

→ These cross-reference elements point you to related material elsewhere in the book.

CASE STUDY

You'll find these case studies throughout the book, and they're designed to take what you've learned and apply it to projects and real-world examples.

This page intentionally left blank

Building Basic Formulas

3

A worksheet is merely a lifeless collection of numbers and text until you define some kind of relationship among the various entries. You do this by creating *formulas* that perform calculations and produce results. This chapter takes you through some formula basics, including constructing simple arithmetic and text formulas, understanding the all-important topic of operator precedence, copying and moving worksheet formulas, and making formulas easier to build and read by taking advantage of range names.

Understanding Formula Basics

Most worksheets are created to provide answers to specific questions: What is the company's profit? Are expenses over or under budget, and by how much? What is the future value of an investment? How big will an employee's bonus be this year? You can answer these questions, and an infinite variety of others, by using Excel formulas.

All Excel formulas have the same general structure: an equal sign (=) followed by one or more *operands*, which can be values, cell references, ranges, range names, or function names, separated by one or more *operators*, which are symbols that combine the operands in some way, such as the plus sign (+) and the greater-than sign (>).

IN THIS CHAPTER

Understanding Formula Basics	53
Understanding Operator Precedence	57
Controlling Worksheet Calculation	60
Copying and Moving Formulas.....	62
Displaying Worksheet Formulas.....	65
Converting a Formula to a Value	66
Working with Range Names in Formulas.....	67
Working with Links in Formulas.....	71
Formatting Numbers, Dates, and Times	74



NOTE

Excel doesn't object if you use spaces between operators and operands in your formulas. This is actually a good practice to get into because separating the elements of a formula in this way can make them much easier to read. Note, too, that Excel also accepts line breaks in formulas. This is handy if you have a very long formula because it enables you to "break up" the formula so that it appears on multiple lines. To create a line break within a formula, press Alt+Enter.

Formula Limits in Excel 2013

It's a good idea to know the limits Excel sets on various aspects of formulas and worksheet models, even though it's unlikely that you'll ever bump up against these limits. Formula limits that were expanded in Excel 2007 remain the same in Excel 2013. So if you're coming to Excel 2013 from Excel 2003 or earlier, Table 3.1 shows you the updated limits.

Table 3.1 Formula-Related Limits in Excel 2013

Object	Excel 2013 Maximum	Excel 2003 Maximum
Columns	16,384	1,024
Rows	1,048,576	65,536
Formula length (characters)	8,192	1,024
Function arguments	255	30
Formula nesting levels	64	7
Array references (rows or columns)	Unlimited	65,335
PivotTable columns	16,384	255
PivotTable rows	1,048,576	65,536
PivotTable fields	16,384	255
Unique PivotField items	1,048,576	32,768

→ *Formula nesting levels* refers to the number of expressions that are nested within other expressions using parentheses; see "Controlling the Order of Precedence," p. 58.

Entering and Editing Formulas

Entering a new formula into a worksheet appears to be a straightforward process:

1. Select the cell in which you want to enter the formula.
2. Type an equal sign (=) to tell Excel that you're entering a formula.
3. Type the formula's operands and operators.
4. Press Enter to confirm the formula.

However, Excel has three different *input modes* that determine how it interprets certain keystrokes and mouse actions:

- When you type the equal sign to begin the formula, Excel goes into *Enter mode*, which is the mode you use to enter text (such as the formula's operands and operators).
- If you press any keyboard navigation key (such as Page Up, Page Down, or any arrow key), or if you click any other cell in the worksheet, Excel enters *Point mode*. This is the mode you use to select a cell or range as a formula operand. When you're in Point mode, you can use any of the standard range-selection techniques. Note that Excel returns to Enter mode as soon as you type an operator or any character.
- If you press F2, Excel enters *Edit mode*, which is the mode you use to make changes to the formula. For example, when you're in Edit mode, you can use the left and right arrow keys to move the cursor to another part of the formula for deleting or inserting characters. You can also enter Edit mode by clicking anywhere within the formula. Press F2 to return to Enter mode.

TIP You can tell which mode Excel is currently in by looking at the status bar. On the left side, you'll see Enter, Point, or Edit.

After you've entered a formula, you might need to return to it to make changes. Excel gives you three ways to enter Edit mode and make changes to a formula in the selected cell:

- Press F2.
- Double-click the cell.
- Use the formula bar to click anywhere inside the formula text.

Excel divides formulas into four groups: arithmetic, comparison, text, and reference. Each group has its own set of operators, and you use each group in different ways. In the next few sections, I show you how to use each type of formula.

Using Arithmetic Formulas

Arithmetic formulas are by far the most common type of formula. They combine numbers, cell addresses, and function results with mathematical operators to perform calculations.

Table 3.2 summarizes the mathematical operators used in arithmetic formulas.

Table 3.2 The Arithmetic Operators

Operator	Name	Example	Result
+	Addition	=10+5	15
-	Subtraction	=10-5	5
-	Negation	=-10	-10

Operator	Name	Example	Result
*	Multiplication	=10*5	50
/	Division	=10/5	2
%	Percentage	=10%	0.1
^	Exponentiation	=10^5	100000

Most of these operators are straightforward, but the exponentiation operator might require further explanation. The formula $=x^y$ means that the value x is raised to the power y . For example, the formula $=3^2$ produces the result 9 (that is, $3*3=9$). Similarly, the formula $=2^4$ produces 16 (that is, $2*2*2*2=16$).

Using Comparison Formulas

A *comparison formula* is a statement that compares two or more numbers, text strings, cell contents, or function results. If the statement is true, the result of the formula is given the logical value TRUE (which is equivalent to any nonzero value). If the statement is false, the formula returns the logical value FALSE (which is equivalent to zero). Table 3.3 summarizes the operators you can use in comparison formulas.

Table 3.3 Comparison Formula Operators

Operator	Name	Example	Result
=	Equal to	=10=5	FALSE
>	Greater than	=10>5	TRUE
<	Less than	=10<5	FALSE
>=	Greater than or equal to	="a">="b"	FALSE
<=	Less than or equal to	="a"<="b"	TRUE
<>	Not equal to	="a"<>"b"	TRUE

Comparison formulas have many uses. For example, you can determine whether to pay a salesperson a bonus by using a comparison formula to compare actual sales with a predetermined quota. If the sales are greater than the quota, the rep is awarded the bonus. You also can monitor credit collection. For example, if the amount a customer owes is more than 150 days past due, you might send the invoice to a collection agency.

→ Comparison formulas also make use of Excel's logical functions, so see "Adding Intelligence with Logical Functions," p. 163.

Using Text Formulas

The two types of formulas that I discussed in the previous sections, arithmetic formulas and comparison formulas, calculate or make comparisons and return values. However, a *text formula* is a formula that returns text. Text formulas use the ampersand (&) operator to work with text cells, text strings enclosed in quotation marks, and text function results.

One way to use text formulas is to concatenate text strings. For example, if you enter the formula `= "soft" & "ware"` into a cell, Excel displays `software`. Note that the quotation marks and the ampersand aren't shown in the result. You also can use & to combine cells that contain text. For example, if A1 contains the text Ben and A2 contains Jerry, entering the formula `=A1&" "` and `" "&A2` returns Ben and Jerry.

→ For other uses of text formulas, see Chapter 7, "Working with Text Functions."

Using Reference Formulas

The reference operators combine two cell references or ranges to create a single joint reference. Table 3.4 summarizes the operators you can use in reference formulas.

Table 3.4 Reference Formula Operators

Operator	Name	Description
: (colon)	Range	Produces a range from two cell references (for example, A1:C5)
(space)	Intersection	Produces a range that is the intersection of two ranges (for example, A1:C5 B2:E8)
, (comma)	Union	Produces a range that is the union of two ranges (for example, A1:C5,B2:E8)

Understanding Operator Precedence

You'll often use simple formulas that contain just two values and a single operator. In practice, however, most formulas you use will have a number of values and operators. In these more complex expressions, the order in which the calculations are performed becomes crucial. For example, consider the formula `=3+5^2`. If you calculate from left to right, the answer you get is 64 (3+5 equals 8, and 8^2 equals 64). However, if you perform the exponentiation first and then the addition, the result is 28 (5^2 equals 25, and 3+25 equals 28). As this example shows, a single formula can produce multiple answers, depending on the order in which you perform the calculations.

To control this problem, Excel evaluates a formula according to a predefined *order of precedence*. This order of precedence enables Excel to calculate a formula unambiguously by determining which part of the formula it calculates first, which part second, and so on.

The Order of Precedence

Excel's order of precedence is determined by the various formula operators outlined earlier. Table 3.5 summarizes the complete order of precedence used by Excel.

Table 3.5 The Excel Order of Precedence

Operator	Operation	Order of Precedence
:	Range	1st
<space>	Intersection	2nd
,	Union	3rd
-	Negation	4th
%	Percentage	5th
^	Exponentiation	6th
* and /	Multiplication and division	7th
+ and -	Addition and subtraction	8th
&	Concatenation	9th
= < > <= >= <>	Comparison	10th

From this table, you can see that Excel performs exponentiation before addition. Therefore, the correct answer for the formula $=3+5^2$, given previously, is 28. Notice also that some operators in Table 3.4 have the same order of precedence (for example, multiplication and division). This means that it usually doesn't matter in which order these operators are evaluated. For example, consider the formula $=5*10/3$. If you perform the multiplication first, the answer you get is 25 ($5*10$ equals 50, and $50/2$ equals 25). If you perform the division first, you also get an answer of 25 ($10/2$ equals 5, and $5*5$ equals 25). By convention, Excel evaluates operators with the same order of precedence from left to right, so you should assume that's how your formulas will be evaluated.

Controlling the Order of Precedence

Sometimes, you want to override the order of precedence. For example, suppose that you want to create a formula that calculates the pre-tax cost of an item. If you bought something for \$10.65, including 7% sales tax, and you want to find the cost of the item minus the tax, you use the formula $=10.65/1.07$, which gives you the correct answer of \$9.95. In general, the formula is the total cost divided by 1 plus the tax rate, as shown in Figure 3.1.

Figure 3.1

The general formula to calculate the pre-tax cost of an item.

$$\text{Pre-tax Cost} = \frac{\text{Total Cost}}{1 + \text{Tax Rate}}$$

Figure 3.2 shows how you might implement such a formula. Cell B5 displays the Total Cost variable, and cell B6 displays the Tax Rate variable. Given these parameters, your first instinct might be to use the formula `=B5/1+B6` to calculate the original cost. This formula is shown (as text) in cell E9, and the result is given in cell D9. As you can see, this answer is incorrect. What happened? Well, according to the rules of precedence, Excel performs division before addition, so the value in B5 first is divided by 1 and then is added to the value in B6. To get the correct answer, you must override the order of precedence so that the addition `1+B6` is performed first. You do this by surrounding that part of the formula with parentheses, as shown in cell E10. When this is done, you get the correct answer (cell D10).

TIP

In Figure 3.2, how did I convince Excel to show the formulas in cells E9 and E10 as text? I used Excel's new `FORMULATEXT()` function (see "Displaying a Cell's Formula Using `FORMULATEXT()`," later in this chapter).

Figure 3.2

Use parentheses to control the order of precedence in your formulas.

	A	B	C	D	E	F	G
1							
2	Calculating the Pre-Tax Cost of an Item						
3							
4	Variables:						
5	Total Cost	\$10.65					
6	Tax Rate	7%					
7	Pre-Tax Cost Calculation:						
8				Result	Formula in D		
9			Without controlling precedence ->	\$10.72	=B5 / 1 + B6		
10			Controlling precedence ->	\$9.95	=B5 / (1 + B6)		
11							
12							

In general, you can use parentheses to control the order that Excel uses to calculate formulas. Terms inside parentheses are always calculated first; terms outside parentheses are calculated sequentially (according to the order of precedence).

TIP

Another good use for parentheses is raising a number to a fractional power. For example, if you want to take the *n*th root of a number, you use the following general formula:

`=number ^ (1 / n)`

For example, to take the cube root of the value in cell A1, use this:

`=A1 ^ (1 / 3)`

To gain even more control over your formulas, you can place parentheses inside one another; this is called *nesting* parentheses. Excel always evaluates the innermost set of parentheses first. Here are a few sample formulas:

Formula	1st Step	2nd Step	3rd Step	Result
<code>3^(15/5)*2-5</code>	<code>3^3*2-5</code>	<code>27*2-5</code>	<code>54-5</code>	49
<code>3^((15/5)*2-5)</code>	<code>3^(3*2-5)</code>	<code>3^(6-5)</code>	<code>3^1</code>	3
<code>3^(15/(5*2-5))</code>	<code>3^(15/(10-5))</code>	<code>3^(15/5)</code>	<code>3^3</code>	27

Notice that the order of precedence rules also hold within parentheses. For example, in the expression `(5*2-5)`, the term `5*2` is calculated before `5` is subtracted.

Using parentheses to determine the order of calculations enables you to gain full control over your Excel formulas. This way, you can make sure that the answer given by a formula is the one you want.

CAUTION

One of the most common mistakes when using parentheses in formulas is to forget to close a parenthetical term with a right parenthesis. If you do this, Excel generates an error message (and offers a solution to the problem). To make sure that you've closed each parenthetical term, count all the left and right parentheses. If these totals don't match, you know you've left out a parenthesis.

Controlling Worksheet Calculation

Excel always calculates a formula when you confirm its entry, and the program normally recalculates existing formulas automatically whenever their data changes. This behavior is fine for small worksheets, but it can slow you down if you have a complex model that takes several seconds or even several minutes to recalculate. To turn off this automatic recalculation, Excel gives you two ways to get started:

- Select Formulas, Calculation Options.
- Select File, Options and then click Formulas.

Either way, you're presented with three calculation options:

- **Automatic**—This is the default calculation mode, and it means that Excel recalculates formulas as soon as you enter them and as soon as the data for a formula changes.
- **Automatic Except for Data Tables**—In this calculation mode, Excel recalculates all formulas automatically, except for those associated with data tables. This is a good choice if your worksheet includes one or more massive data tables that are slowing down the recalculation.

→ To learn how to set up data tables, see “Using What-If Analysis,” p. 345.

- **Manual**—Select this mode to force Excel not to recalculate any formulas until either you manually recalculate or until you save the workbook. If you're in the Excel Options dialog box, you can tell Excel not to recalculate when you save the workbook by clearing the Recalculate Workbook Before Saving check box.

With manual calculation turned on, you see “Calculate” in the status bar whenever your worksheet data changes and your formula results need to be updated. When you want to recalculate, first display the Formulas tab. In the Calculation group, you have two choices:

- Click Calculate Now (or press F9) to recalculate every open worksheet.
- Click Calculate Sheet (or press Shift+F9) to recalculate only the active worksheet.

TIP If you want Excel to recalculate every formula—even those that are unchanged—in all open worksheets, press Ctrl+Alt+Shift+F9.

If you want to recalculate only part of your worksheet while manual calculation is turned on, you have two options:

- To recalculate a single formula, select the cell containing the formula, click in the formula bar, and then confirm the cell (by pressing Enter or clicking the Enter button).
- To recalculate a range, select the range; select Home, Find & Select, Replace (or press Ctrl+H); and enter an equal sign (=) in both the Find What and Replace With boxes. Click Replace All. Excel “replaces” the equal sign in each formula with another equal sign. This doesn't change anything, but it forces Excel to recalculate each formula.

TIP Excel supports multithreaded calculation on computers with either multiple processors or processors with multiple cores. For each processor (or core), Excel sets up a thread (a separate process of execution). Excel can then use each available thread to process multiple calculations concurrently. For a worksheet with multiple, independent formulas, this can dramatically speed up calculations. To make sure multithreaded calculation is turned on, select File, Options; click Advanced; and then in the Formulas section ensure that the Enable Multi-Threaded Calculation check box is selected.

Copying and Moving Formulas

You copy and move ranges that contain formulas the same way you copy and move regular ranges, but the results aren't always straightforward.

For an example, check out Figure 3.3, which shows a list of expense data for a company. The formula in cell C11 uses the `SUM()` function to total the January expenses (range C6:C10). The idea behind this worksheet is to calculate a new expense budget number for 2011 as a percentage increase of the actual 2012 total. Cell C3 displays the `INCREASE` variable (in this case, the increase being used is 3%). The formula that calculates the 2013 `BUDGET` number (cell C13 for the month of January) multiplies the 2012 `TOTAL` by the `INCREASE` (that is, `=C11*C3`).

Figure 3.3

A budget expenses worksheet with two calculations for the January numbers: the total (cell C11) and a percentage increase for next year (cell C13).

	A	B	C	D	E	F	G	H	I
1	Expense Budget Calculation								
2									
3		INCREASE	1.09						
4									
5		EXPENSES	January	February	March	Total			
6		Advertising	4,600	4,200	5,200	14,000			
7		Rent	2,100	2,100	2,100	6,300			
8		Supplies	1,300	1,200	1,400	3,900			
9		Salaries	16,000	16,000	16,500	48,500			
10		Utilities	500	600	600	1,700			
11		2012 TOTAL	24,500						
12									
13		2013 BUDGET	26,705						
14									

The next step is to calculate the 2012 `TOTAL` expenses and the 2013 `BUDGET` figure for February. You could just type each new formula, but you can copy a cell much more quickly. Figure 3.4 shows the results when you copy the contents of cell C11 into cell D11. As you can see, Excel adjusts the range in the formula's `SUM()` function so that only the February expenses (D6:D10) are totaled. How did Excel know to do this? To answer this question, you need to know about Excel's relative reference format, which I discuss in the next section.

Understanding Relative Reference Format

When you use a cell reference in a formula, Excel looks at the cell address relative to the location of the formula. For example, suppose that you have the formula `=A1*2` in cell A3. To Excel, this formula says, "Multiply the contents of the cell two rows above this one by 2." This is called the *relative reference format*, and it's the default format for Excel. This means that if you copy this formula to cell A4, the relative reference is still "Multiply the contents of the cell two rows above this one by 2," but the formula changes to `=A2*2` because A2 is two rows above A4.

Figure 3.4

When you copy the January 2012 TOTAL formula to February, Excel automatically adjusts the range reference.

EXPENSES	January	February	March	Total
Advertising	4,600	4,200	5,200	14,000
Rent	2,100	2,100	2,100	6,300
Supplies	1,300	1,200	1,400	3,900
Salaries	16,000	16,000	16,500	48,500
Utilities	500	600	600	1,700
2012 TOTAL	24,500	24,100		
2013 BUDGET	26,705			

Figure 3.4 shows why this format is useful. You had only to copy the formula in cell C11 to cell D11 and, thanks to relative referencing, everything came out perfectly. To get the expense total for March, you would just have to paste the same formula into cell E11. You'll find that this way of handling copy operations will save you incredible amounts of time when you're building your worksheet models.

However, you need to exercise some care when copying or moving formulas. Let's see what happens if you return to the budget expense worksheet and try copying the 2013 BUDGET formula in cell C13 to cell D13. Figure 3.5 shows that the result is 0!

Figure 3.5

Copying the January 2013 BUDGET formula to February creates a problem.

EXPENSES	January	February	March	Total
Advertising	4,600	4,200	5,200	14,000
Rent	2,100	2,100	2,100	6,300
Supplies	1,300	1,200	1,400	3,900
Salaries	16,000	16,000	16,500	48,500
Utilities	500	600	600	1,700
2012 TOTAL	24,500	24,100		
2013 BUDGET	26,705	0		

What happened? The formula bar shows the problem: The new formula is `=D11*D3`. Cell D11 is the February 2012 TOTAL, and that's fine, but instead of the INCREASE cell (C3), the formula refers to a blank cell (D3). Excel treats blank cells as 0, so the formula result is 0. The problem is the relative reference format. When the formula was copied, Excel assumed that the new formula should refer to cell D3. To see how you can correct this problem, you need to learn about another format—the *absolute reference format*—that I discuss in the next section.

NOTE

The relative reference format problem doesn't occur when you move a formula. When you move a formula, Excel assumes that you want to keep the same cell references.

Understanding Absolute Reference Format

When you refer to a cell in a formula using the absolute reference format, Excel uses the physical address of the cell. You tell the program that you want to use an absolute reference by placing dollar signs (\$) before the row and column of the cell address. To return to the example in the preceding section, Excel interprets the formula `=A$1*2` as “Multiply the contents of cell A1 by 2.” No matter where you copy or move this formula, the cell reference doesn't change. The cell address is said to be *anchored*.

To fix the budget expense worksheet, you need to anchor the INCREASE variable. To do this, you first change the January 2013 BUDGET formula in cell C13 to read `=C11*C3`. After making this change, copying the formula to the February 2013 BUDGET column gives the new formula `=D11*C3`, which produces the correct result.

CAUTION

Most range names refer to absolute cell references. This means that when you copy a formula that uses a range name, the copied formula will use the same range name as the original. This might produce errors in your worksheet.

You also should know that you can enter a cell reference using a mixed-reference format. In this format, you anchor either the cell's row (by placing the dollar sign in front of the row address only—for example, `B$6`) or its column (by placing the dollar sign in front of the column address only—for example, `$B6`).

TIP

You can quickly change the reference format of a cell address by using the F4 key. When editing a formula, place the cursor to the left of the cell address (or between the row and column values) and then keep pressing F4. Excel cycles through the various formats. If you want to apply the new reference format to multiple cell addresses, highlight the addresses and then press F4 until you get the format you want.

Copying a Formula Without Adjusting Relative References

If you need to copy a formula but don't want the formula's relative references to change, follow these steps:

1. Select the cell that contains the formula you want to copy.
2. Click inside the formula bar to activate it.

3. Use the mouse or keyboard to select the entire formula.
4. Copy the selected formula.
5. Press Esc to deactivate the formula bar.
6. Select the cell in which you want the copy of the formula to appear.
7. Paste the formula.

NOTE

Here are two other methods you can use to copy a formula without adjusting its relative cell references:

- To copy a formula from the cell above, select the lower cell and press Ctrl+' (apostrophe).
- Activate the formula bar and type an apostrophe (') at the beginning of the formula (that is, to the left of the equal sign) to convert it to text. Press Enter to confirm the edit, copy the cell, and then paste it in the desired location. Now, delete the apostrophe from both the source and destination cells to convert the text back to a formula.

Displaying Worksheet Formulas

By default, Excel displays in a cell the results of the cell's formula instead of the formula itself. If you need to see a formula, you can simply select the appropriate cell and look at the formula bar. However, sometimes you'll want to see all the formulas in a worksheet (such as when you're troubleshooting your work).

→ For more information about solving formula problems, see Chapter 5, "Troubleshooting Formulas."

Displaying All Worksheet Formulas

To display all your worksheet's formulas, select Formulas, Show Formulas.

TIP

You can also press Ctrl+' (backquote) to toggle a worksheet between values and formulas.

Displaying a Cell's Formula Using FORMULATEXT ()

In some cases, rather than showing all the sheet's formulas, you might prefer to show the formulas in only a cell or two. For example, if you're presenting a worksheet to other people, that sheet might have some formulas you want to show, but it might also have one

or more proprietary formulas that you don't want your audience to see. In this case, you can display individual cell formulas by using the new `FORMULATEXT()` function:

```
FORMULATEXT(cell)
```

cell The address of the cell that contains the formula you want to show

For example, the following formula displays the formula text from the cell in D9:

```
=FORMULATEXT(D9)
```

Converting a Formula to a Value

If a cell contains a formula whose value will never change, you can convert the formula to that value. This speeds up large worksheet recalculations and it frees up memory for your worksheet because values use much less memory than formulas do. For example, you might have formulas in part of your worksheet that use values from a previous fiscal year. Because these numbers aren't likely to change, you can safely convert the formulas to their values. To do this, follow these steps:

1. Select the cell containing the formula you want to convert.
2. Double-click the cell or press F2 to activate in-cell editing.
3. Press F9. The formula changes to its value.
4. Press Enter or click the Enter button. Excel changes the cell to the value.

You'll often need to use the result of a formula in several places. If a formula is in cell C5, for example, you can display its result in other cells by entering `=C5` in each of the cells. This is the best method if you think the formula result might change because, if it does, Excel updates the other cells automatically. However, if you're sure that the result won't change, you can copy only the value of the formula into the other cells. Use the following procedure to do this:

CAUTION

If your worksheet is set to manual calculation, make sure that you update your formulas (by pressing F9) before copying the values of your formulas.

1. Select the cell that contains the formula.
2. Copy the cell.
3. Select the cell or cells to which you want to copy the value.
4. Select Home, display the Paste list, and then select Paste Values. Excel pastes the cell's value to each cell you selected.

Another method is to copy the cell, paste it into the destination, drop down the Paste Options list, and then select Values Only.

Working with Range Names in Formulas

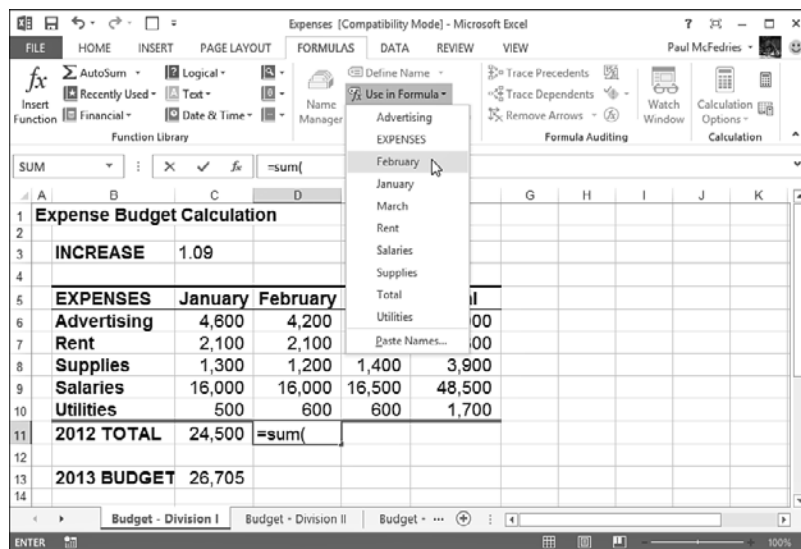
Chapter 2, “Using Range Names,” showed you how to define and use range names in your worksheets. You probably use range names often in your formulas. After all, a cell that contains the formula `=Sales-Expenses` is much more comprehensible than one that contains the more cryptic formula `=F12-F3`. The next few sections show you some techniques that make it easier for you to use range names in formulas.

Pasting a Name into a Formula

One way to enter a range name in a formula is to type the name in the formula bar. But what if you can't remember the name? Or what if the name is long and you've got a deadline looming? For these kinds of situations, Excel has several features that enable you to select the name you want from a list and paste it right into the formula. Start your formula, and when you get to the spot where you want the name to appear, use any of the following techniques:

- Select Formulas, Use in Formula and then click the name in the list that appears (see Figure 3.6).

Figure 3.6
Drop down the Use in Formula list and then click the range name you want to insert into your formula.



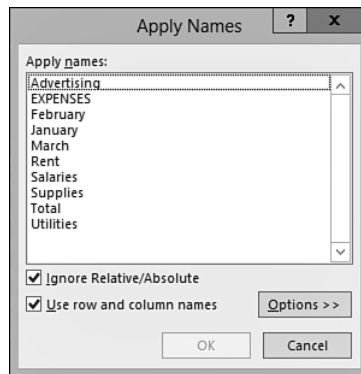
- Select Formulas, Use in Formula, Paste Names (or press F3) to display the Paste Name dialog box, click the range name you want to use, and then click OK.
- Type the first letter or two of the range name to display a list of names and functions that start with those letters, select the name you want, and then press Tab.

Applying Names to Formulas

If you've been using ranges in your formulas and you name those ranges later, Excel doesn't automatically apply the new names to the formulas. Instead of substituting the appropriate names by hand, you can get Excel to do the hard work for you. Follow these steps to apply the new range names to your existing formulas:

1. Select the range in which you want to apply the names, or select a single cell if you want to apply the names to the entire worksheet.
2. Select Formulas, Define Name, Apply Names. Excel displays the Apply Names dialog box, shown in Figure 3.7.

Figure 3.7
Use the Apply Names dialog box to select the names you want to apply to your formula ranges.



3. In the Apply Names list, choose the name or names you want applied from this list.
4. Select the Ignore Relative/Absolute check box to ignore relative and absolute references when applying names. (See the next section for more information on this option.)
5. The Use Row and Column Names check box tells Excel whether to use the worksheet's row and column names when applying names. If you select this check box, you also can click the Options button to see more choices. (See the section in this chapter, "Using Row and Column Names When Applying Names," for details.)
6. Click OK to apply the names.

Ignoring Relative and Absolute References When Applying Names

If you clear the Ignore Relative/Absolute option in the Apply Names dialog box, Excel replaces relative range references only with names that refer to relative references, and it replaces absolute range references only with names that refer to absolute references. If you leave this option selected, Excel ignores relative and absolute reference formats when applying names to a formula.

For example, suppose that you have a formula such as =SUM(A1:A10) and a range named Sales that refers to \$A\$1:\$A\$10. With the Ignore Relative/Absolute option turned off, Excel

won't apply the name Sales to the range in the formula; Sales refers to an absolute range, and the formula contains a relative range. Unless you think you'll be moving your formulas around, you should leave the Ignore Relative/Absolute option selected.

Using Row and Column Names When Applying Names

For extra clarity in your formulas, leave the Use Row and Column Names check box selected in the Apply Names dialog box. This option tells Excel to rename all cell references that can be described as the intersection of a named row and a named column. In Figure 3.8, for example, the range C6:C10 is named January, and the range C7:E7 is named Rent. This means that cell C7—the intersection of these two ranges—can be referenced as January Rent.

As shown in Figure 3.8, the Total for the Rent row (cell F7) currently contains the formula =C7+D7+E7. If you applied range names to this worksheet and selected the Use Row and Column Names option, you'd think this formula would be changed to this:

=January Rent + February Rent + March Rent

Figure 3.8

Before range names are applied to the formulas, cell F7 (Total Rent) contains the formula =C7+D7+E7.

	A	B	C	D	E	F	G	H	I
1	Expense Budget Calculation								
2									
3		INCREASE	1.09						
4									
5		EXPENSES	January	February	March	Total			
6		Advertising	4,600	4,200	5,200	14,000			
7		Rent	2,100	2,100	2,100	6,300			
8		Supplies	1,300	1,200	1,400	3,900			
9		Salaries	16,000	16,000	16,500	48,500			
10		Utilities	500	600	600	1,700			
11		2012 TOTAL	24,500	24,100	25,800	74,400			
12									
13		2013 BUDGET	26,705	26,269	28,122	81,096			
14									

If you try this, however, you'll get a slightly different formula, as shown in Figure 3.9.

Figure 3.9

After range names are applied, the Total Rent cell contains the formula =January+February+March.

	A	B	C	D	E	F	G	H	I
1	Expense Budget Calculation								
2									
3		INCREASE	1.09						
4									
5		EXPENSES	January	February	March	Total			
6		Advertising	4,600	4,200	5,200	14,000			
7		Rent	2,100	2,100	2,100	6,300			
8		Supplies	1,300	1,200	1,400	3,900			
9		Salaries	16,000	16,000	16,500	48,500			
10		Utilities	500	600	600	1,700			
11		2012 TOTAL	8,000	7,500	8,700	24,200			
12									
13		2013 BUDGET	8,720	8,175	9,483	26,378			
14									

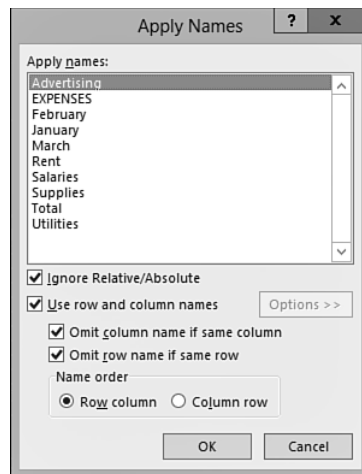
The reason for this is that when Excel is applying names, it omits the row name if the formula is in the same row. (It also omits the column name if the formula is in the same column.) In cell F7, for example, Excel omits Rent in each term because F7 is in the Rent row.

Omitting row headings isn't a problem in a small model, but it can be confusing in a large worksheet, where you might not be able to see the names of the rows. Therefore, if you're applying names to a large worksheet, you'll probably prefer to include the row names when applying names.

Choosing the **Options** button in the Apply Names dialog box displays the expanded dialog box shown in Figure 3.10. This includes extra options that enable you to include column (and row) headings:

- **Omit Column Name If Same Column**—Clear this check box to include column names when applying names.
- **Omit Row Name If Same Row**—Clear this check box to include row names.
- **Name Order**—Use these options to select the order of names in the reference (Row Column or Column Row).

Figure 3.10
The expanded Apply Names dialog box.



Naming Formulas

In Chapter 2, you learned how to set up names for often-used constants. You can apply a similar naming concept for frequently used formulas. As with the constants, the formula doesn't physically have to appear in a cell. This not only saves memory, but it often makes your worksheets easier to read as well. Follow these steps to name a formula:

1. Select Formulas, Define Name to display the New Name dialog box.
2. Enter the name you want to use for the formula in the **Name** text box.

3. In the Refers To box, enter the formula exactly as you would if you were entering it in a worksheet.
4. Click OK.

Now you can enter the formula name in your worksheet cells (instead of the formula itself). For example, the following is the formula for the volume of a sphere (r is the radius of the sphere):

$$4\pi r^3/3$$

So, assuming that you have a cell named Radius somewhere in the workbook, you could create a formula named, say, SphereVolume, and make the following entry in the Refers To box of the New Name dialog box (where `PI()` is the Excel worksheet function that returns the value of pi):

$$=(4 * PI() * Radius ^ 3) / 3$$

Working with Links in Formulas

If you have data in one workbook that you want to use in another, you can set up a link between them. This action enables your formulas to use references to cells or ranges in the other workbook. When the other data changes, Excel automatically updates the link.

For example, Figure 3.11 shows two linked workbooks. The Budget Summary sheet in the 2014 Budget–Summary workbook includes data from the Details worksheet in the 2014 Budget workbook. Specifically, the formula shown for cell B2 in 2014 Budget–Summary contains an external reference to cell R7 in the Details worksheet of 2014 Budget. If the value in R7 changes, Excel immediately updates the 2014 Budget–Summary workbook.

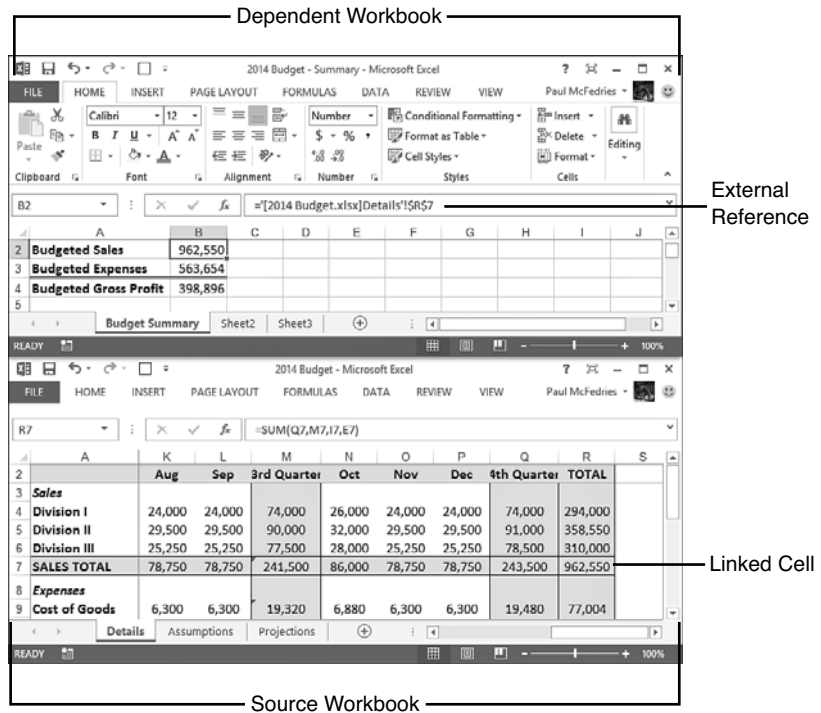
NOTE The workbook that contains the external reference is called the *dependent* workbook (or the *client* workbook). The workbook that contains the original data is called the *source* workbook (or the *server* workbook).

Understanding External References

There's no big mystery behind external reference links. You set up links by including an external reference to a cell or range in another workbook (or in another worksheet from the same workbook). In the example shown in Figure 3.11, all I did was enter an equal sign in cell B2 of the Budget Summary worksheet and then click cell R7 in the Details worksheet.

Figure 3.11

These two workbooks are linked because the formula in cell B2 of the 2014 Budget–Summary workbook references cell R7 in the 2014 Budget workbook.



The only thing you need to be comfortable with is the structure of an external reference. Here's the syntax:

`'path[workbookname]sheetname'!reference`

- path* The drive and directory in which the workbook is located, which can be a local path, a network path, or even an Internet address. You need to include the path only when the workbook is closed.
- workbookname* The name of the workbook, including an extension. Always enclose the workbook name in square brackets ([]). You can omit *workbookname* if you're referencing a cell or range in another sheet of the same workbook.
- sheetname* The name of the worksheet's tab. You can omit *sheetname* if *reference* is a defined name in the same workbook.
- reference* A cell or range reference, or a defined name.

For example, if you close the 2014 Budget workbook, Excel automatically changes the external reference shown in Figure 3.11 to this (depending on the actual path of the file):

`'C:\Users\Paul\Documents\[2014 Budget.xlsx]Details'!R7`

NOTE

You need the single quotation marks around the path, workbook name, and sheet name only if the workbook is closed or if the path, workbook, or sheet name contains spaces. If in doubt, include the single quotation marks anyway; Excel happily ignores them if they're not required.

Updating Links

The purpose of a link is to avoid duplicating formulas and data in multiple worksheets. If one workbook contains the information you need, you can use a link to reference the data without re-creating it in another workbook.

To be useful, however, the data in the dependent workbook should always reflect what actually is in the source workbook. You can make sure of this by updating the link, as explained here:

- If both the source and the dependent workbooks are open, Excel automatically updates the link whenever the data in the source file changes.
- If the source workbook is open when you open the dependent workbook, Excel automatically updates the links again.
- If the source workbook is closed when you open the dependent workbook, Excel displays a Security Warning in the information bar, which tells you automatic updating of links has been disabled. In this case, click Enable Content.

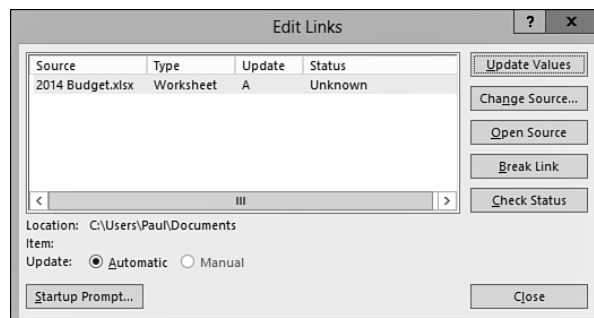
TIP

If you always trust the links in your workbooks (that is, you never deal with third-party workbooks or any other workbooks from sources you don't completely trust), you can configure Excel to always update links automatically. To begin, select File, Options, click Trust Center, and then click Trust Center Settings. In the Trust Center dialog box, click External Content and then click to select the Enable Automatic Update for All Workbook Links option. Click OK and then click OK again.

- If you didn't update a link when you opened the dependent document, you can update it any time by choosing Data, Edit Links. In the Edit Links dialog box that appears (see Figure 3.12), click the link and then click Update Values.

Figure 3.12

Use the Edit Links dialog box to update the linked data in the source workbook.



Changing the Link Source

If the name of the source document changes, you'll need to edit the link to keep the data up to date. You can edit the external reference directly, or you can change the source by following these steps:

1. With the dependent workbook active, select Data, Edit Links to display the Edit Links dialog box.
2. Click the link you want to work with.
3. Click Change Source. Excel displays the Change Source dialog box.
4. Find and then select the new source document, and then click OK to return to the Edit Links dialog box.
5. Click Close to return to the workbook.

Formatting Numbers, Dates, and Times

One of the best ways to improve the readability of your worksheets is to display your data in a format that is logical, consistent, and straightforward. Formatting currency amounts with leading dollar signs, percentages with trailing percent signs, and large numbers with commas are a few of the ways you can improve your spreadsheet style.

This section shows you how to format numbers, dates, and times using Excel's built-in formatting options. You'll also learn how to create your own formats to gain maximum control over the appearance of your data.

Numeric Display Formats

When you enter numbers in a worksheet, Excel removes any leading or trailing zeros. For example, if you enter 0123.4500, Excel displays 123.45. The exception to this rule occurs when you enter a number that is wider than the cell. In this case, Excel usually expands the width of the column to fit the number. However, in some cases, Excel tailors the number to fit the cell by rounding off some decimal places. For example, a number such as 123.45678 is displayed as 123.4568. Note that, in this case, the number is changed for display purposes only; Excel still retains the original number internally.

When you create a worksheet, each cell uses this format, known as the *General* number format, by default. If you want your numbers to appear differently, you can select from among Excel's seven categories of numeric formats: Number, Currency, Accounting, Percentage, Fraction, Scientific, and Special:

- **Number formats**—The number formats have three components: the number of decimal places, whether the thousands separator (,) is used, and how negative numbers are displayed. For negative numbers, you can display the number with a leading minus sign, in red, surrounded by parentheses, or in red surrounded by parentheses.

NOTE

Although you can select a number as high as 30 in the Decimal Places spin box, Excel will only display the first 14 decimal places. This applies to percentages as well (see below).

- **Currency formats**—The currency formats are similar to the number formats, except that the thousands separator is always used, and you have the option of displaying the numbers with a leading dollar sign (\$) or some other currency symbol.
- **Accounting formats**—With the accounting formats, you can select the number of decimal places and whether to display a leading dollar sign (or other currency symbol). If you do use a dollar sign, Excel displays it flush left in the cell. All negative entries are displayed surrounded by parentheses.
- **Percentage formats**—The percentage formats display the number multiplied by 100 with a percent sign (%) to the right of the number. For example, .506 is displayed as 50.6%. You can display up to 14 decimal places.
- **Fraction formats**—The fraction formats enable you to express decimal quantities as fractions. There are nine fraction formats in all, including displaying the number as halves, quarters, eighths, sixteenths, tenths, and hundredths.
- **Scientific formats**—The scientific formats display the most significant number to the left of the decimal, 2–30 decimal places to the right of the decimal, and then the exponent. So, 123000 is displayed as 1.23E+05.
- **Special formats**—The special formats are a collection designed to take care of special cases. Here's a list of the special formats, with some examples:

Format	Enter This	It Displays as This
ZIP code	1234	01234
ZIP code + 4	123456789	12345-6789
Phone number	1234567890	(123) 456-7890
Social Security number	123456789	123-45-6789

Changing Numeric Formats

The quickest way to format numbers is to specify the format as you enter your data. For example, if you begin a dollar amount with a dollar sign (\$), Excel automatically formats the number as currency. Similarly, if you type a percent sign (%) after a number, Excel automatically formats the number as a percentage. Here are a few more examples of this technique. Note that you can enter a negative value using either the negative sign (–) or parentheses.

Number Entered	Number Displayed	Format Used
\$1234.567	\$1,234.57	Currency
(\$1234.5)	(\$1,234.50)	Currency
10%	10%	Percentage

Number Entered	Number Displayed	Format Used
123E+02	1.23E+04	Scientific
5 3/4	5 3/4	Fraction
0 3/4	3/4	Fraction
3/4	4-Mar	Date

NOTE

Excel interprets a simple fraction such as 3/4 as a date (March 4, in this case). Always include a leading zero, followed by a space, if you want to enter a simple fraction from the formula bar.

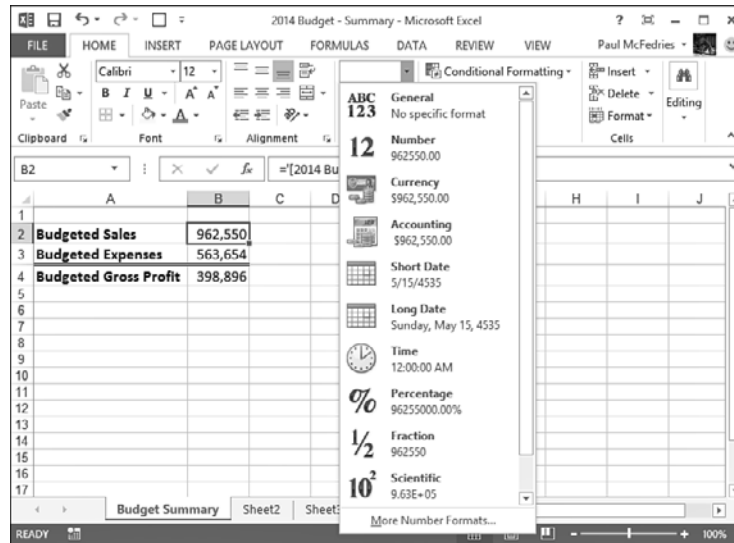
3

Specifying the numeric format as you enter a number is fast and efficient because Excel guesses the format you want to use. Unfortunately, Excel sometimes guesses wrong (for example, interpreting a simple fraction as a date). In any case, you don't have access to all the available formats (for example, displaying negative dollar amounts in red). To overcome these limitations, you can select your numeric formats from a list. Here are the steps to follow:

1. Select the cell or range of cells to which you want to apply the new format.
2. Select the Home tab.
3. Pull down the Number Format list. Excel displays its built-in formats, as shown in Figure 3.13. Under the name of each format, Excel shows you how the current cell would be displayed if you chose that format.
4. Click the format you want to use.

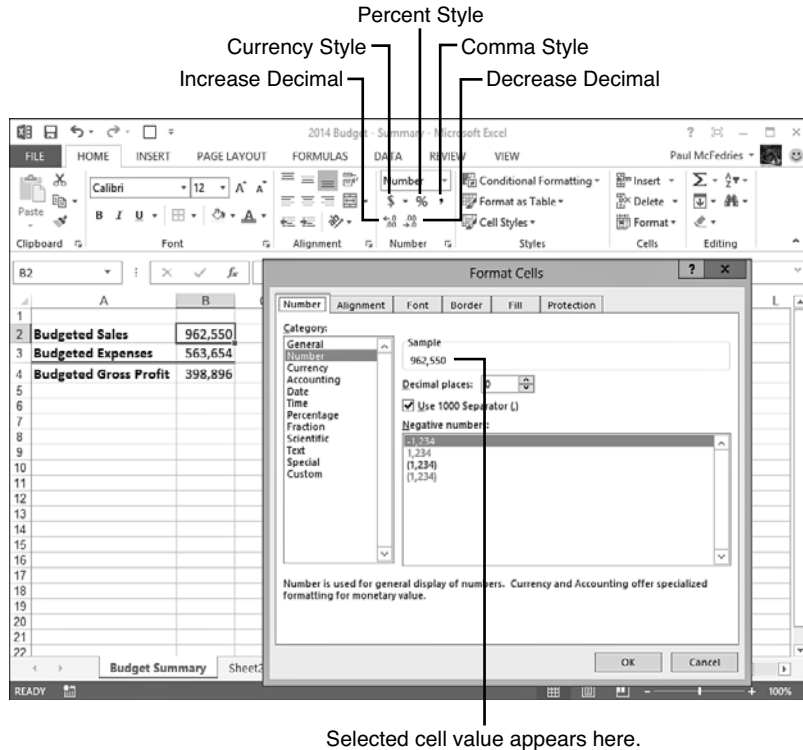
Figure 3.13

In the Home tab, pull down the Number Format list to see all of Excel's built-in numeric formats.



For more numeric formatting options, use the Number tab of the Format Cells dialog box. Select the cell or range and then select Home, Number Format, More Number Formats. (You can also click the Number group's dialog box launcher or press Ctrl+1.) As you can see in Figure 3.14, when you click a numeric format in the Category list, Excel displays more formatting options, such as the Decimal Places spin box. (The options you see depend on the category you select.) The Sample information box shows a sample of the format applied to the current cell's contents.

Figure 3.14
When you select a format in the Category list, Excel displays the format's options.



As an alternative to the Format Cells dialog box, Excel offers several keyboard shortcuts for setting the numeric format. Select the cell or range you want to format, and use one of the key combinations listed in Table 3.6.

Table 3.6 Shortcut Keys for Selecting Numeric Formats

Shortcut Key	Format
Ctrl+~	General
Ctrl+!	Number (two decimal places; using thousands separator)
Ctrl+\$	Currency (two decimal places; using dollar sign; negative numbers surrounded by parentheses)
Ctrl+%	Percentage (zero decimal places)
Ctrl+^	Scientific (two decimal places)

You can use the controls in the Home tab's Number group as another method of selecting numeric formats. The Number Format list (see Figure 3.14) displays all the formats. Here are the other controls that appear in this group:

Button	Format
Accounting Style	Accounting (two decimal places; using dollar sign)
Percent Style	Percentage (zero decimal places)
Comma Style	Number (two decimal places; using thousands separator)
Increase Decimal	Increases the number of decimal places in the current format
Decrease Decimal	Decreases the number of decimal places in the current format

Customizing Numeric Formats

Excel numeric formats give you lots of control over how your numbers are displayed, but they have their limitations. For example, no built-in format enables you to display a number such as 0.5 without the leading zero, or to display temperatures using, for example, the degree symbol.

To overcome these and other limitations, you need to create your own custom numeric formats. You can do this either by editing an existing format or by entering your own from scratch. The formatting syntax and symbols are explained in detail later in this section.

Every Excel numeric format, whether built-in or customized, has the following syntax:

positive format;negative format;zero format;text format

The four parts, separated by semicolons, determine how various numbers are presented. The first part defines how a positive number is displayed, the second part defines how a negative number is displayed, the third part defines how zero is displayed, and the fourth part defines how text is displayed. If you leave out one or more of these parts, numbers are controlled as shown here:

Number of Parts	Format Syntax Used
Three	<i>positive format;negative format;zero format</i>
Two	<i>positive and zero format;negative format</i>
One	<i>positive, negative, and zero format</i>

Table 3.7 lists the special symbols you use to define each of these parts.

Table 3.7 Numeric Formatting Symbols

Symbol	Description
General	Displays the number with the General format.
#	Holds a place for a digit and displays the digit exactly as typed. Displays nothing if no number is entered.
0	Holds a place for a digit and displays the digit exactly as typed. Displays 0 if no number is entered.
?	Holds a place for a digit and displays the digit exactly as typed. Displays a space if no number is entered.
. (period)	Sets the location of the decimal point.
, (comma)	Sets the location of the thousands separator. Marks only the location of the first thousand.
%	Multiplies the number by 100 (for display only) and adds the percent (%) character.
E+ e+ E- e-	Displays the number in scientific format. E- and e- place a minus sign in the exponent; E+ and e+ place a plus sign in the exponent.
/ (slash)	Sets the location of the fraction separator.
\$ () : - + <space>	Displays the character.
*	Repeats whatever character immediately follows the asterisk until the cell is full. Doesn't replace other symbols or numbers.
_ (underscore)	Inserts a blank space the width of whatever character follows the underscore.
\ (backslash)	Inserts the character that follows the backslash.
"text"	Inserts the text that appears within the quotation marks.
@	Holds a place for text.
[COLOR]	Displays the cell contents in the specified color.
[COLOR <i>n</i>]	Displays the cell contents in the specified color value (where <i>n</i> is a number between 1 and 56).
[<i>condition value</i>]	Uses conditional statements to specify when the format is to be used.

Before looking at some examples, let's run through the basic procedure. To customize a numeric format, select the cell or range you want to format and then follow these steps:

1. Select Home, Number Format, More Number Formats (or press Ctrl+1) and select the Number tab, if it's not already displayed.
2. In the Category list, click Custom.
3. If you're editing an existing format, select it in the Type list box.

4. Edit or enter your format code.
5. Click OK. Excel returns you to the worksheet with the custom format applied.

Excel stores each new format definition in the Custom category. If you edited an existing format, the original format is left intact and the new format is added to the list. You can select the custom formats the same way you select the built-in formats. To use your custom format in other workbooks, you copy a cell containing the format to that workbook. Figure 3.15 shows a dozen examples of custom formats.

Figure 3.15
Sample custom numeric
formats.

Example	Custom Format	Cell Entry	Result
1	0,.0	12500	12.5
	0,,0 "million"	12500000	12.5 million
2	###	.5	.5
3	#,##0; #,##0;0;"Enter a number"	1234	1,234
	#,##0; #,##0;0;"Enter a number"	-1234	-1,234
	#,##0; #,##0;0;"Enter a number"	0	0
	#,##0; #,##0;0;"Enter a number"	text	Enter a number
4	0¢	25	25¢
5	#,##0 "Dollars"	1234	1,234 Dollars
6	#,## \M	1	1.44M
7	#,##0.0°F	98.6	98.6°F
8	;;;	1234	
9	"Acct"\# 00-0000;;; "Don't enter dash"	123456	Acct# 12-3456
	"Acct"\# 00-0000;;; "Don't enter dash"	12-3456	Don't enter dash
10	#*.	1234	1234.....
	;;;@*.	March	March.....
11	;;;*.@	MarchMarch
12	+?? ?/?;[Red]-?? /?	-12.75	-12 3/4

Here's a quick explanation for each example:

- **Example 1**—These formats show how you can reduce a large number to a smaller, more readable one by using the thousands separator. A format such as 0,000.0 would display, for example, 12300 as 12,300.0. If you remove the three zeros between the comma and the decimal (to get the format 0,.0), Excel displays the number as 12.3 (although it still uses the original number in calculations). In essence, you've told Excel to express the number in thousands. To express a larger number in millions, you just add a second thousands separator.
- **Example 2**—Use this format when you don't want to display any leading or trailing zeros.
- **Example 3**—These are examples of four-part formats. The first three parts define how Excel should display positive numbers, negative numbers, and zero. The fourth part displays the message "Enter a number" if the user enters text in the cell.

- **Example 4**—In this example, the cents sign (¢) is used after the value. To enter the cents sign, press Alt+0162 on your keyboard's numeric keypad. (This won't work if you use the numbers along the top of the keyboard.) Table 3.8 shows some common ANSI characters you can use.

Table 3.8 ANSI Character Key Combinations

Key Combination	ANSI Character
Alt+0162	¢
Alt+0163	£
Alt+0165	¥
Alt+0169	©
Alt+0174	®
Alt+0176	°

- **Example 5**—This example adds the text string "Dollars" to the format.
- **Example 6**—In this example, an *M* is appended to any number, which is useful if your spreadsheet units are in megabytes.
- **Example 7**—This example uses the degree symbol (°) to display temperatures.
- **Example 8**—The three semicolons used in this example result in no number being displayed (which is useful as a basic method for hiding a sensitive value).
- **Example 9**—This example shows that you can get a number sign (#) to display in your formats by preceding # with a backslash (\).
- **Example 10**—In this example, you see a trick for creating dot trailers. Recall that the asterisk (*) symbol fills the cell with whatever character follows it. So, creating a dot trailer is a simple matter of adding ".*" to the end of the format.
- **Example 11**—This example shows a similar technique that creates a dot leader. Here, the first three semicolons display nothing; then comes ".*", which runs dots from the beginning of the cell up to the text (represented by the @ sign).
- **Example 12**—This example shows a format that's useful for entering stock quotations.

Hiding Zeros

Worksheets look less cluttered and are easier to read if you hide unnecessary zeros. Excel enables you to hide zeros either throughout the entire worksheet or only in selected cells.

To hide all zeros, select File, Options, click the Advanced tab in the Excel Options dialog box, and scroll down to the Display Options for this Worksheet section. Clear the Show a Zero in Cells That Have Zero Value check box and then click OK.

To hide zeros in selected cells, create a custom format that uses the following format syntax:

```
positive format;negative format;
```

The extra semicolon at the end acts as a placeholder for the zero format. Because there's no definition for a zero value, nothing is displayed. For example, the format `$$,##0.00_);($#,##0.00)`; displays standard dollar values, but it leaves the cell blank if it contains zero.

TIP If your worksheet contains only integers (no fractions or decimal places), you can use the format `#,###` to hide zeros.

Using Condition Values

The action of the formats you've seen so far have depended on whether the cell contents were positive, negative, zero, or text. Although this is fine for most applications, sometimes you need to format a cell based on different conditions. For example, you might want only specific numbers, or numbers within a certain range, to take on a particular format. You can achieve this effect by using the `[condition value]` format symbol. With this symbol, you set up conditional statements using the logical operators `=`, `<`, `>`, `<=`, `>=`, and `<>`, and the appropriate numbers. You then assign these conditions to each part of your format definition.

For example, suppose you have a worksheet for which the data must be within the range `-1,000` and `1,000`. To flag numbers outside this range, you set up the following format:

```
[>=1000]"Error: Value >= 1,000";[<=-1000]"Error: Value <= -1,000";0.00
```

The first part defines the format for numbers greater than or equal to `1,000` (an error message). The second part defines the format for numbers less than or equal to `-1,000` (also an error message). The third part defines the format for all other numbers (`0.00`).

→ You're better off using Excel's extensive conditional formatting features; see "Applying Conditional Formatting to a Range," p. 25.

Date and Time Display Formats

If you include dates or times in your worksheets, you need to make sure that they're presented in a readable, unambiguous format. For example, most people would interpret the date `8/5/13` as August 5, 2013. However, in some countries, this date would mean May 8, 2013. Similarly, if you use the time `2:45`, do you mean a.m. or p.m.? To avoid these kinds of problems, you can use Excel's built-in date and time formats, listed in Table 3.9.

Table 3.9 Excel's Date and Time Formats

Format	Display
m/d	8/3
m/d/yy	8/3/13
mm/dd/yy	08/03/13
d-mmm	3-Aug
d-mmm-yy	3-Aug-13
dd-mmm-yy	03-Aug-13
mmm-yy	Aug-13
mmmm-yy	August-13
mmmm d, yyyy	August 3, 2013
h:mm AM/PM	3:10 PM
h:mm:ss AM/PM	3:10:45 PM
h:mm	15:10
h:mm:ss	15:10:45
mm:ss.0	10:45.7
[h]:[mm]:[ss]	25:61:61
m/d/yy h:mm AM/PM	8/23/13 3:10 PM
m/d/yy h:mm	8/23/13 15:10

The [h]:[mm]:[ss] format requires a bit more explanation. You use this format when you want to display hours greater than 24 or minutes and seconds greater than 60. For example, suppose that you have an application in which you need to sum several time values (such as the time you've spent working on a project). If you add, say, 10:00 and 15:00, Excel normally shows the total as 1:00 (because, by default, Excel restarts times at 0 when they hit 24:00). To display the result properly (that is, as 25:00), use the format [h]:00.

You use the same methods you used for numeric formats to select date and time formats. In particular, you can specify the date and time format as you input your data. For example, entering Jan-07 automatically formats the cell with the mmm-yy format. Also, you can use the following shortcut keys:

Shortcut Key	Format
Ctrl+#	d—mmm—yy
Ctrl+@	h:mm AM/PM
Ctrl+;	Current date (m/d/yy)
Ctrl+:	Current time (h:mm AM/PM)

TIP

Excel for the Macintosh uses a different date system than Excel for Windows uses. If you share files between these environments, you need to use Macintosh dates in your Excel for Windows worksheets to maintain the correct dates when you move from one system to another. Select File, Options, click Advanced, scroll down to the When Calculating This Workbook section, and then select the Use 1904 Date System check box.

Customizing Date and Time Formats

Although the built-in date and time formats are fine for most applications, you might need to create your own custom formats. For example, you might want to display the day of the week (for example, Friday). Custom date and time formats generally are simpler to create than custom numeric formats. There are fewer formatting symbols, and you usually don't need to specify different formats for different conditions. Table 3.10 lists the date and time formatting symbols.

Table 3.10 The Date and Time Formatting Symbols

Symbol	Description
<i>Date Formats</i>	
d	Day number without a leading zero (1–31)
dd	Day number with a leading zero (01–31)
ddd	Three-letter day abbreviation (Mon, for example)
dddd	Full day name (Monday, for example)
m	Month number without a leading zero (1–12)
mm	Month number with a leading zero (01–12)
mmm	Three-letter month abbreviation (Aug, for example)
mmmm	Full month name (August, for example)
yy	Two-digit year (00–99)
yyyy	Full year (1900–2078)
<i>Time Formats</i>	
h	Hour without a leading zero (0–24)
hh	Hour with a leading zero (00–24)
m	Minute without a leading zero (0–59)
mm	Minute with a leading zero (00–59)
s	Second without a leading zero (0–59)
ss	Second with a leading zero (00–59)
AM/PM, am/pm, A/P	Displays the time using a 12-hour clock

Symbol	Description
<i>Date Formats</i>	
/ : . -	Symbols used to separate parts of dates or times
[COLOR]	Displays the date or time in the color specified
[condition value]	Uses conditional statements to specify when the format is to be used

Figure 3.16 shows some examples of custom date and time formats.

Figure 3.16
Sample custom date and time formats.

Custom Format	Cell Entry	Result
dddd, mmmm d, yyyy	8/23/2013	Friday, August 23, 2013
mmmm, yyyy	8/23/2013	August, 2013
dddd	8/23/2013	Friday
mm.dd.yy	8/23/2013	08.23.13
mmdyy	8/23/2013	082313
yymmdd	8/23/2013	130823
>8/15/13"OVERDUE!";mm/dd/yy	8/23/2013	OVERDUE!
hhmm "hours"	3:10 PM	1510 hours
hh"h" mm"m"	3:10 PM	15h 10m
[=5]"12 Noon";[=0]"12 Midnight";h:mm AM/PM	0	12 Midnight
[=5]"12 Noon";[=0]"12 Midnight";h:mm AM/PM	12:00	12 Noon
[=5]"12 Noon";[=0]"12 Midnight";h:mm AM/PM	3:10 PM	3:10 PM

Deleting Custom Formats

The best way to become familiar with custom formats is to try your own experiments. Just remember that Excel stores each format you try. If you find that your list of custom formats is getting a bit unwieldy or that it's cluttered with unused formats, you can delete formats by following the steps outlined here:

1. Select Home, Number Format, More Number Formats.
2. Click the Custom category.
3. Click the format in the Type list box. (Note that you can delete only the formats you've created yourself.)
4. Click Delete. Excel removes the format from the list.
5. To delete other formats, repeat steps 2-4.
6. Click OK. Excel returns you to the spreadsheet.

From Here

- To learn about conditional formatting, **see** “Applying Conditional Formatting to a Range,” **p. 25**.
- To learn how to solve formula problems, **see** Chapter 5, “Troubleshooting Formulas.”
- To get the details on text formulas and functions, **see** Chapter 7, “Working with Text Functions.”
- If you want to use logical worksheet functions in your comparison formulas, **see** “Adding Intelligence with Logical Functions,” **p. 163**.
- To learn how to create and use data tables, **see** “Using What-If Analysis,” **p. 345**.

Index

Symbols

- & (ampersand), 58
- ' (apostrophe), converting formulas to text, 65
- * (asterisk), 56, 301
- { } (braces), 89
- ^ (caret), 56
- :
- (colon), 58
- ,
- (comma), 58
- \$ (dollar sign), 64
- = (equal sign), as start of formulas, 53.
See also equal to operator
- / (forward slash), 56
- < (left arrow), 56
- <= (left arrow, equal sign), 56
- (minus sign), 55
- % (percent sign), 56
- + (plus sign), 55
- > (right arrow), 56
- >= (right arrow, equal sign), 56
- ' (single quotation mark), 71-73
- (space), 58
 - #NULL! error value, 115
 - referring to overlapping ranges, 50-51
- <> (two arrows), 56
- #DIV/0! error value, 112, 167
- #N/A error value, 113
- #NAME? error value, 113-115
- #NULL! error value, 115
- #NUM! error value, 115
- #REF! error value, 115-116

#VALUE! error value, 116

% Difference From summary calculation, 331

% of Column Total summary calculation, 334

% of Grand Total summary calculation, 334

% of Parent Column Total summary calculation, 334

% of Parent Row Total summary calculation, 334

% of Parent Total summary calculation, 334

% of Row Total summary calculation, 334

% Of summary calculation, 334

3D ranges, 7-8

A

Above Average rule, 28

ABS function, 238

absolute references, 64, 68-69

account numbers, generating, 154-155, 161

accounting formats, 75

accounts receivable aging worksheet case study, 178-180

ACOS function, 240

ACOSH function, 240

ACOT function, 240

ACOTH function, 240

active cell, viewing, 6

adding

- constraints in Solver, 410-412
- every nth row, 250
- fields to tables, 292-293
- formulas to data tables, 348-349
- months, 218
- positive/negative values in ranges, 249

records to tables, 292

scenarios to worksheets, 360-361

times, 232-233

values, 247-249

addition operator, 55

adjacent cells, selecting, 10

age, calculating, 225-226

aging worksheet case study, 178-180

algebraic equations, solving, 357-358

amortization schedules, building, 434-437, 441-442

ampersand operator, 58

Analysis ToolPak, 275-288

- Correlation tool, 279-282
- Descriptive Statistics tool, 278-280
- Histogram tool, 282-284
- list of tools, 276-278
- loading, 136
- Random Number Generation tool, 283-286
- Rank and Percentile tool, 286-288

anchor cell, 6

Anova: Single Factor tool, 276

Anova: Two-Factor with Replication tool, 276

Anova: Two-Factor Without Replication tool, 276

ANSI character codes

- generating ANSI character set, 141-142
- text functions for, 141-144

ANSI character key combinations, 81

Answer report in Solver, 421-422

apostrophe, converting formulas to text, 65

applying

- data validation to cells, 100-102
- range names to existing formulas, 68-70

approximations in Goal Seek, 355-356
arithmetic formulas, 55
arithmetic operators
 combining ranges with, 23-24
 list of, 55-56
array constants in formulas, 90-91
array formulas, 88-90
array functions
 combining with logical functions,
 172-178
 explained, 91-92
arrays, 87-88
arrows. See tracer arrows
articles, sorting without, 297-298
ASIN function, 240
ASINH function, 240
asterisk (*), 56, 301
ATAN function, 240
ATAN2 function, 240
ATANH function, 240
auditing worksheets, 124-127
 evaluating formulas, 126
 removing tracer arrows, 125
 tracer arrows, types of, 124-125
 tracing cell dependents, 125
 tracing cell errors, 125
 tracing cell precedents, 124-125
 watching cell values, 126-127
AutoComplete
 with functions, 133
 with range names, 46
 with table formulas, 309
AutoFill
 custom lists, 16-17
 text and numeric series, 15-16
AVERAGE function, 5, 8, 258, 261-262

Average summary calculation, 330
average values, calculating, 261-264
AVERAGEIF function, 258, 312-313
AVERAGEIFS function, 258, 315

B

BAHTTEXT function, 138
balloon loans, 430-431
Below Average rule, 28
**Bernoulli random number distribution,
 284**
best-fit lines, 369-376
 extending
 with fill handle, 377-378
 with LINEST function, 381
 with regression equation, 379-380
 with Series command, 378-379
 with TREND function, 380
 LINEST function, 373-376
 plotting, 369-370
 regression equation, explained,
 370-371
 R-squared, 371-372
 sales versus advertising trends, 376
 seasonal sales model case study,
 382-389
 TREND function, 372-373
Between rule, 26
billable time case study, 247
bin interval, calculating, 270
**binary numbers, converting to decimal,
 145-146**
**binomial random number distribution,
 284**
birthdays, determining, 220
blank cells
 counting in ranges, 187-188

- selecting all, 9
- troubleshooting formulas, 118

book publishing case study, 474-477

borrowing amount, calculating, 440-441

Bottom 10 Items rule, 28

Bottom 10% rule, 28

bottom k values, calculations on, 266

braces in array formulas, 89

break-even analysis

- adding constraints to, 410-412

- with Goal Seek, 356-357

- with Solver, 407-410

business-modeling tools

- Goal Seek, 351-358

- algebraic equations, 357-358

- approximations in, 355-356

- break-even analysis, 356-357

- optimizing product margin, 354-355

- setting up worksheet for, 352

- regression analysis, 367-368

- multiple regression analysis, 402-404

- seasonal sales model case study, 382-389

- simple regression on linear data, 368-381

- simple regression on nonlinear data, 389-402

- types of, 368

- Scenario Manager, 358-365

- adding scenarios, 360-361

- deleting scenarios, 365

- displaying scenarios, 361-362

- editing scenarios, 362

- generating summary reports, 363-365

- merging scenarios, 363

- setting up worksheet for, 359

- what-if analysis, 345-351

- adding formulas to data tables, 348-349

- editing data tables, 351

- one-input data tables, 346-348

- two-input data tables, 349-350

buying versus leasing, 463-464

C

calculated fields, creating, 340-341

calculated items, creating, 341-342

calculating

- age, 225-226

- average values, 261-264

- bin interval, 270

- borrowing amount, 440-441

- with bottom k values, 266

- correlation between data sets, 280-281

- cumulative totals, 248

- deposit amounts, 452

- deseasoned monthly values, 387

- deseasoned trend, 388

- difference between dates, 224-229

- difference between times, 233, 250

- due dates, 179

- Easter, 244

- exponential trends, 391

- extreme values, 264-266

- forecast trend, 384

- formulas, controlling manually, 60-61

- future dates, 217

- future times, 231-232

- future value, 448-450, 453-454

- holiday dates, 222-224

- initial deposit, 453

- interest rate
 - in investment formulas, 450-451
 - in loan formulas, 439-440
- internal rate of return, 471-474
 - IRR function, 472
 - multiple internal rates of return, 473-474
 - nonperiodic cash flows, 472-473
- Julian dates, 224
- kurtosis, 274-275
- leap years, 251
- loan payments, 429-434
 - balloon loans, 430-431
 - cumulative principal and interest, 433-434
 - interest costs, 431-432
 - principal and interest components, 431-432
- logarithmic trends, 395-396
- monthly seasonal indexes, 386-387
- net present value, 465-469
 - nonperiodic cash flows, 468-469
 - NPV function, 466-467
 - varying cash flows, 467-468
- normal trend, 383-384
- number of periods in investment formulas, 451-452
- past due dates, 180
- payback period, 469-471
- polynomial trends, 401-402
- power trends, 398-399
- present value, 460-464
 - buying versus leasing, 463-464
 - income investment versus rental property investment, 462-463
 - inflation, 460-461
 - PV function, 461-462
- price points, 246
- range, 267
- reseasoned trend, 388
- seasonal forecast, 388
- seasonal trend, 385-386
- slope, 373-376
- standard deviation, 268-269
- term of loan, 437-439
- tiered payments, 168
- with top k values, 265-266
- variance, 267-268
- weighted mean, 263-264
- weighted questionnaire results, 195
- y-intercept, 373-376
- calculation errors, preventing, 245-246**
- Calculation property in PivotTables, setting, 337**
- cash-flow analysis, 464-469**
 - book publishing case study, 474-477
 - nonperiodic cash flows, 468-469
 - NPV function, 466-467
 - varying cash flows, 467-468
- categories**
 - consolidating multisheet data by, 98-99
 - putting values into, 169-170
- CEILING.MATH function, 238, 243, 247**
- cell attributes, copying, 22-23**
- CELL function, 158, 181-184**
- cell references**
 - converting range names to, 114
 - invalid references, 115-116
- cell values. See values**
- cells**
 - active cell, viewing, 6
 - anchor cell, 6
 - changing cells, 359

- data validation, applying, 100-102
- linking controls to, 104
- padding with text, 151
- selected cells, scrolling through, 7
- selecting. *See* ranges, selecting

changing

- numeric display formats, 75-78
- range names, 50

changing cells, 359**CHAR function, 138, 141-143**

characters. *See* text

charts

- best-fit lines, plotting, 369-370
- exponential trends, plotting, 389-391
- logarithmic trends, plotting, 394-395
- polynomial trends, plotting, 400-401
- power trends, plotting, 397-398
- text-based charts, building, 151-152

check boxes, 106-107**CHOOSE function, 191-196****circular references, 6**

- fixing, 118-119
- iteration and, 92-94

CLEAN function, 138, 150**clearing**

- PivotTables, 329
- ranges, 25

client workbooks, 71**CODE function, 138, 144****color scales, 32-34****column fields, 324****COLUMN function, 92, 158****column letters, determining, 158-159****columns**

- as lookup columns, 204-205
- multiple-column lookups, 206
- naming, 49-50

- transposing with rows, 24-25

COLUMNS function, 92**COMBIN function, 238****combining ranges arithmetically, 23-24****combo boxes, 107-108****commas in functions, 131****comments, selecting cells by, 9****comparison formulas, 56****comparison operators, list of, 56****comparisons, selecting cells by, 11-12****complex criteria for filtering tables, 301-305****compound criteria in criteria ranges, 304****compound interest, 446****computed criteria in criteria ranges, 305****CONCATENATE function, 138****condition values in numeric display formats, 82****conditional formatting, 25-26**

- color scales, 32-34
- data bars, 29-32
- highlight cell rules, 26-27
- icon sets, 33-35
- with logical functions, 171-172
- selecting cells by, 13
- top/bottom rules, 28-29

consolidating multisheet data, 94-99**constants**

- array constants in formulas, 90-91
- naming, 43-44
- selecting cells containing, 9

Constraint Precision option (Solver), 413**constraints**

- adding, 410-412
- non-negative constraints, in Solver, 412

content type, selecting cells by, 9

controls. *See* dialog box controls

convergence, 93

Convergence option (Solver), 415

converting

formulas

to text, 65, 112

to values, 66

between nominal and effective rate,
447-448

range names to cell references, 114

ranges to tables, 291-292

text

to date, 215

to decimal number, 145-146

to lowercase, 145

to proper case, 145

to sentence case, 153-154

to time, 230

to uppercase, 145

copying

filtered data to different range, 306

formulas, 62-65

ranges, 22

cell attributes only, 22-23

combining arithmetically, 23-24

transposing rows and columns,
24-25

CORREL function, 258, 373

correlation coefficient, 280

Correlation tool, 276, 279-282

COS function, 240

COSH function, 240

COT function, 240

COTH function, 240

COUNT function, 8, 258, 261

Count Numbers summary calculation, 331

Count summary calculation, 330

COUNTA function, 8, 258

COUNTIF function, 311

COUNTIFS function, 313-314

counting

blank cells in ranges, 187-188

characters in strings, 160

errors in ranges, 188

occurrences of values in ranges,
176-177

COVAR function, 258

COVARIANCE function, 258

Covariance tool, 276

criteria ranges

compound criteria in, 304

computed criteria in, 305

filtering tables with, 302-303

setting up, 302

in table functions, 315-318

CSC function, 240

CSCH function, 240

Ctrl+A, selecting cells, 7

CUMIPMT function, 433-434

CUMPRINC function, 433-434

cumulative principal and interest, calculating, 433-434

cumulative totals, calculating, 248

currency formats, 75

current date, displaying, 214

current time, displaying, 229-230

custom calculations in PivotTables,
338-342

calculated fields, 340-341

calculated items, 341-342

restrictions on, 339-340

custom color scales, 33

custom data bars, 31

custom icon sets, 35

custom lists with AutoFill, 16-17**customizing**

- date and time display formats, 84-85
- numeric display formats, 78-81, 84

D

data areas, 324**data bars, 29-32****data entry in ranges, 14****data fields in summary calculations, 324**

- changing, 330
- difference calculations, 330-332
- index calculations, 337-338
- list of, 330-331
- percentage calculations, 333-335
- running total calculations, 336-337

data sources, 324**data tables**

- adding formulas to data tables, 348-349
- editing, 351
- one-input data tables, 346-348
- recalculating, 350
- two-input data tables, 349-350

data validation

- applying to cells, 100-102
- selecting cells by, 13

databases, building PivotTables from, 327-328**date and time display formats, 82-85**

- customizing, 84-85
- deleting custom formats, 84-85

date filters, 300**DATE function, 213-215****date functions**

- calculating future dates, 217
- DATE function, 214-215

DATEDIF function, 226

DATEVALUE function, 215

DAY function, 216

DAYS function, 225-226

DAYS360 function, 227-228

difference between dates, calculating, 224-229

EDATE function, 219

EOMONTH function, 219

holiday dates, calculating, 222-224

ISOWEEKNUM function, 217

Julian dates, calculating, 224

list of, 213

MONTH function, 215

NETWORKDAYS function, 227

TODAY function, 214

WEEKDAY function, 216, 220-222

WEEKNUM function, 216-217

WORKDAY function, 217-218

YEAR function, 215

YEARFRAC function, 228-229

A Date Occurring rule, 27**date-conversion formula, for text, 154****DATEDIF function, 213, 226****dates**

birthdays, determining, 220

Easter, calculating, 244

entering, 210-211

fiscal quarters for, determining, 243-244

leap years, determining, 251

months

- adding, 218

- determining last day of, 219-220

- serial numbers for, 209-210

- two-digit years, 211-212

DATEVALUE function, 213, 215

DAVERAGE function, 316-317

DAY function, 213, 216

day of the week, determining name of, 193-194

DAYS function, 213, 225-226

DAYS360 function, 213, 227-228

DCOUNT function, 316

DCOUNTA function, 316

DECIMAL function, 138, 145-146

decimal numbers, converting text to, 145-146

defining range names

with Name box, 38-39

with New Name dialog box, 39-40

scope changes, 41

with worksheet text, 41-43

degree symbol, inserting, 148

DEGREES function, 240

deleting

custom AutoFill lists, 17

custom formats, 84-85

fields, 293

range names, 50

avoiding #NAME? errors, 114-115

converting to cell references, 114

ranges, 25

records, 293

scenarios, 365

dependent variables, 368

dependent workbooks, 71

dependents

defined, 124

selecting cells by, 12

shortcut keys, 13

tracing, 125

deposits

calculating amount of, 452

future value of, 449

initial deposit, calculating, 453

Derivatives option (Solver), 415

descriptive statistics, 260

AVERAGE function, 261-262

COUNT function, 261

LARGE function, 265-266

MAX function, 264-265

MEDIAN function, 262

MIN function, 264-265

MODE function, 262-263

SMALL function, 265-266

weighted mean, calculating, 263-264

Descriptive Statistics tool, 276, 278-280

deseasoned monthly values, calculating, 387

deseasoned trend, calculating, 388

Developer tab, viewing, 102-103

DGET function, 316-318

dialog box controls on worksheets, 102-109

adding, 103-104

check boxes, 106-107

combo boxes, 107-108

Developer tab, viewing, 102-103

Form Controls list, 103

group boxes, 105

linking to cells, 104

list boxes, 107-108

option buttons, 105-106

scroll bars, 108-109

spin boxes, 108-109

difference between dates, calculating, 224-229

difference between times, calculating, 233, 250

Difference From summary calculation, 331

difference summary calculations, 331-332

differences, selecting cells by, 11-12

discount formulas

book publishing case study, 474-477

cash-flow analysis, 464-469

internal rate of return, calculating,
471-474

payback period, calculating, 469-471

present value, calculating, 460-464

discount rates, determining, 198-199

**discounted payback period, calculating,
471**

discrete random number generation, 284

display formats

date and time display formats, 82-85

customizing, 84-85

deleting custom formats, 84-85

numeric display formats, 74-82

changing, 75-78

condition values, 82

customizing, 78-81

deleting custom formats, 84

hiding zeros, 81-82

types of, 74-75

displaying. See also viewing

current date, 214

current time, 229-230

filtered records, 301

scenarios, 361-362

table totals, 293

when workbook was last updated,
148-149

**distribution types in Random Number
Generation tool, 284**

dividing by zero, 112, 167

division operator, 56

DMAX function, 316

DMIN function, 316

DOLLAR function, 138, 147

dollar sign in absolute references, 64

DPRODUCT function, 316

**drop-down lists, exact-match lookups
with, 201**

DSTDEV function, 316

DSTDEVP function, 316

DSUM function, 311, 316

due dates, calculating, 179

Duplicate Values rule, 27

DVAR function, 316

DVARP function, 316

**dynamic amortization schedules, building,
435-437**

E

Easter, calculating, 244

EDATE function, 213, 219

Edit mode (formulas), 55

editing

conditional formatting rules, 29

data tables, 351

formulas, 54-55

link sources, 74

range coordinates for named ranges,
48-50

scenarios, 362

EFFECT function, 447-448

effective rate

converting between nominal rate and,
447-448

nominal rate versus, 446-447

employee time sheet case study, 233-236

engines (Solver), selecting, 413

Enter mode (formulas), 55

EOMONTH function, 213, 219

equal to operator, 56

Equal To rule, 26
erroneous formula results, troubleshooting, 117-118
error actions, choosing in formula error checker, 120-121
error checker (formulas), 120-123
error values, 112-116
 #DIV/0!, 112, 167
 #N/A, 113
 #NAME?, 113-115
 #NULL!, 115
 #NUM!, 115
 #REF!, 115-116
 #VALUE!, 116
errors
 calculation errors, preventing, 245-246
 counting in ranges, 188
 defined, 124
 ignoring in ranges, 188-189
 tracing, 125
ERROR.TYPE function, 181, 184-185
Evaluate Formula feature, 126
evaluating formulas, 126
EVEN function, 238, 244-245
even rows, adding, 250
Evolutionary engine, 413, 416
EXACT function, 138
exact matches, lookups with, 200-201
exact undiscounted payback point, calculating, 470-471
EXP function, 238
Exponential Smoothing tool, 276
exponential trends, 389-394
 calculating, 391
 GROWTH function, 391-392
 LOGEST function, 393-394
 plotting, 389-391

exponentiation operator, 56
Extend mode, range selection with, 6
extending best-fit lines
 with fill handle, 377-378
 with LINEST function, 381
 with regression equation, 379-380
 with Series command, 378-379
 with TREND function, 380
external databases, building PivotTables from, 327-328
external references, 71-73
extracting
 names, first/last/middle, 156-158
 substrings, 152-153
extreme values, calculating, 264-266

F

FACT function, 238
FALSE function, 164
FALSE logical value, 56, 166
field names, 289
field values, 289
fields, 289, 324
 adding, 292-293
 calculated fields, creating, 340-341
 column fields, 324
 data fields, 324
 deleting, 293
 multiple fields, sorting on, 294-295
 partial fields, sorting on, 296-297
 removing PivotTable fields, 329
 row fields, 324
 selecting, 292
fill handle, 15-18
 AutoFill
 custom lists, 16-17
 text and numeric series, 15-16

- extending best-fit lines, 377-378
- with formulas, 18

filling ranges, 14

- with fill handle, 15-18
- Flash Fill feature, 18-20
- Series command, 20-21

filter lists, 298-301

filtering

- PivotTables, 328
- range names, in Name Manager dialog box, 48
- tables, 298-306
 - with complex criteria, 301-305
 - copying to different range, 306
 - with filter lists, 298-301
 - removing filters, 301

filters, 324

financial formulas

- discount formulas
 - book publishing case study, 474-477
 - cash-flow analysis, 464-469
 - internal rate of return, 471-474
 - payback period, 469-471
 - present value, 460-464
- investment formulas
 - future value, 448-450, 453-454
 - initial deposit, 453
 - interest rate, 445-448, 450-451
 - investment goal, working toward, 450-454
 - investment schedule case study, 454-456
 - number of periods, 451-452
 - series of deposits, 452
- loan formulas
 - borrowing amount, 440-441

- interest rate, 439-440
- loan amortization schedules, 434-437
- loan payments, 429-434
- mortgage case study, 441-444
- term of loan, 437-439
- time value of money, 427-428

FIND function, 138, 155-156

first names, extracting, 156-158

fiscal quarters for dates, determining, 243-244

fiscal year, determining month of, 194-195

FIXED function, 138, 147-148

fixed-rate amortization schedules, building, 434-435

Flash Fill feature, 18-20

FLOOR.MATH function, 238, 243

FORECAST function, 258, 381

forecast trend, calculating, 384

forecasting, 377-381

- with exponential trends, 391
- with fill handle, 377-378
- with GROWTH function, 391-392
- with LINEST function, 381
- with logarithmic trends, 395-396
- with LOGEST function, 393-394
- plotting forecasted values, 377-378
- with polynomial trends, 401-402
- with power trends, 398-399
- with regression equation, 379-380
- seasonal sales model case study, 382-389
- with Series command, 378-379
- with TREND function, 380

Form Controls list, 103

formatting

- conditional formatting. *See* conditional formatting

dates and times, 82-85, 210

 customizing, 84-85

 deleting custom formats, 84-85

ledger shading, creating, 251-252

numbers, 74-82

 changing formats, 75-78

 condition values, 82

 customizing, 78-81

 deleting custom formats, 84

 hiding zeros, 81-82

 types of formats, 74-75

PivotTables, 328

tables, 293

text, 146-149

formula error checker, 120-123

formulas. See also functions

 absolute references, 64

 arithmetic formulas, 55

 array constants in, 90-91

 array formulas, 88-90

 comparison formulas, 56

 consolidating multisheet data, 94-99

 controlling recalculation, 60-61

 converting to text, 65, 112

 converting to values, 66

 copying, 62-65

 data validation, 100-102

 date-conversion formula for text, 154

 discount formulas

 book publishing case study,
 474-477

 cash-flow analysis, 464-469

 internal rate of return, 471-474

 payback period, 469-471

 present value, 460-464

 editing, 54-55

 evaluating, 126

 filling ranges with, 18

 Goal Seek, 351-358

 algebraic equations, 357-358

 approximations in, 355-356

 break-even analysis, 356-357

 optimizing product margin,
 354-355

 setting up worksheet for, 352

 investment formulas

 future value, 448-450, 453-454

 initial deposit, 453

 interest rate, 445-448, 450-451

 investment goal, working toward,
 450-454

 investment schedule case study,
 454-456

 number of periods, 451-452

 series of deposits, 452

 iteration and circular references,
 92-94

 limits on, 54

 line breaks in, 54

 links in, 71

 changing source, 74

 updating, 73

 loan formulas

 borrowing amount, 440-441

 interest rate, 439-440

 loan amortization schedules,
 434-437

 loan payments, 429-434

 mortgage case study, 441-444

 term of loan, 437-439

 time value of money, 427-428

 naming, 70-71

 operator precedence, 57-60

 parentheses in, 59-60

 PivotTable results in, 343-344

- range names, 44-46
 - applying to existing formulas, 68-70
 - pasting in, 67
- recalculating, 117
- reference formulas, 57
- referencing tables in, 307-309
 - entering table formulas, 309
 - table specifiers, 307-309
- relative references, 62-64
- selecting cells containing, 9
- structure of, 53
- text formulas, 57
- troubleshooting, 111-112
 - auditing worksheets, 124-127
 - circular references, 118-119
 - erroneous results, 117-118
 - error values, 112-116
 - formula error checker, 120-123
 - IFERROR function, 119-120
 - missing or mismatched parentheses, 116-117
- typing functions into, 132-133
- viewing as text, 59, 65-66
- what-if analysis, 345-351
 - adding formulas to data tables, 348-349
 - editing data tables, 351
 - one-input data tables, 346-348
 - two-input data tables, 349-350
- FORMULATEXT function, 59, 65-66**
- Fourier Analysis tool, 276**
- fraction formats, 75**
- frequency distributions, 270-275**
 - FREQUENCY function, 270-271
 - KURT function, 274-275
 - normal distributions, 271-273
 - SKEW function, 273
- FREQUENCY function, 258, 270-271**
- FTEST function, 258**
- F-Test Two-Sample for Variances tool, 276**
- functions. See also formulas; names of specific functions**
 - with 3D references, 8
 - Analysis ToolPak, loading, 136
 - AND function, 164, 168-170
 - array usage, 91-92
 - date functions
 - calculating future dates, 217
 - DATE function, 214-215
 - DATEDIF function, 226
 - DATEVALUE function, 215
 - DAY function, 216
 - DAYS function, 225-226
 - DAYS360 function, 227-228
 - difference between dates, calculating, 224-229
 - EDATE function, 219
 - EOMONTH function, 219
 - holiday dates, calculating, 222-224
 - ISOWEEKNUM function, 217
 - Julian dates, calculating, 224
 - list of, 213
 - MONTH function, 215
 - NETWORKDAYS function, 227
 - TODAY function, 214
 - WEEKDAY function, 216, 220-222
 - WEEKNUM function, 216-217
 - WORKDAY function, 217-218
 - YEAR function, 215
 - YEARFRAC function, 228-229

- explained, 130
- information functions
 - CELL function, 182-184
 - ERROR.TYPE function, 184-185
 - INFO function, 185-186
 - IS functions, 187-189
 - list of, 181
 - SHEET function, 186-187
 - SHEETS function, 186-187
- Insert Function feature, 134-135
- logical functions
 - accounts receivable aging work-sheet case study, 178-180
 - AND function, 168-170
 - combining with array functions, 172-178
 - conditional formatting with, 171-172
 - IF function, 164-168
 - list of, 164
 - multiple logical tests, 167-171
 - OR function, 170-171
- lookup functions
 - CHOOSE function, 193-196
 - exact matches with, 200-201
 - HLOOKUP function, 197-198
 - INDEX function, 202-206
 - list of, 192
 - lookup tables, 192-193
 - MATCH function, 202-206
 - range lookups with, 198-199
 - VLOOKUP function, 196-197
- math functions
 - adding values, 247-249
 - list of, 238-239
 - MOD function, 249-252
 - random numbers, 252-255
 - rounding functions, 241-246
- OR function, 164, 170-171
- range names in, 44-46
- statistical functions
 - Analysis ToolPak, 275-288
 - AVERAGE function, 261-262
 - COUNT function, 261
 - defects database case study, 318-319
 - descriptive statistics, 260
 - frequency distributions, 270-275
 - FREQUENCY function, 270-271
 - KURT function, 274-275
 - LARGE function, 265-266
 - list of, 257-259
 - MAX function, 264-265
 - measures of variation, 266-269
 - MEDIAN function, 262
 - MIN function, 264-265
 - MODE function, 262-263
 - normal distributions, 271-273
 - SKEW function, 273
 - SMALL function, 265-266
 - weighted mean, calculating, 263-264
- structure of, 130-132
- table functions
 - advantages of, 310
 - AVERAGEIF function, 312-313
 - AVERAGEIFS function, 315
 - COUNTIF function, 311
 - COUNTIFS function, 313-314
 - with criteria range requirements, 315-318
 - DAVERAGE function, 317
 - DGET function, 317-318
 - SUMIF function, 312
 - SUMIFS function, 314

text functions, 138

- ANSI character codes, 141-144
- CHAR function, 141-143
- CLEAN function, 150
- CODE function, 144
- DECIMAL function, 145-146
- DOLLAR function, 147
- FIND function, 155-156
- FIXED function, 147-148
- LEFT function, 153
- list of, 138
- LOWER function, 145
- MID function, 153
- NUMBERVALUE function, 146
- PROPER function, 145
- REPLACE function, 159
- REPT function, 150-152
- RIGHT function, 153
- SEARCH function, 155-156
- SUBSTITUTE function, 160
- TEXT function, 148
- TRIM function, 149-150
- UPPER function, 145

time functions

- adding time values, 232-233
- calculating future times, 231-232
- difference between times, calculating, 233, 250
- employee time sheet case study, 233-236
- HOUR function, 231
- list of, 229
- MINUTE function, 231
- NOW function, 229-230
- SECOND function, 231
- TIME function, 230
- TIMEVALUE function, 230

trigonometric functions, list of, 240

typing into formulas, 132-133

future dates, calculating, 217

future times, calculating, 231-232

future value, calculating, 448-450, 453-454

FV function, 131-132, 439, 448-450

FVSCCHEDULE function, 453-454

G

GCD function, 238

General number format, 74

GETPIVOTDATA function, 192, 339, 343-344

Go To command, range selection with, 8-9

Go To Special dialog box, range selection with, 9-13

Goal Seek, 351-358

- algebraic equations, 357-358
- approximations in, 355-356
- break-even analysis, 356-357
- optimizing product margin, 354-355
- setting up worksheet for, 352

grand totals in PivotTables, hiding, 329

greater than operator, 56

greater than or equal to operator, 56

Greater Than rule, 26

GRG Nonlinear engine, 413, 415-416

group boxes, 105

grouping

- multiple worksheets, 7-8
- PivotTable data, 328-329

GROWTH function, 92, 258, 391-392

H

headline case, converting text to, 145

hexadecimal numbers, converting to decimal, 145-146

hiding

- PivotTable grand totals, 329
- PivotTable subtotals, 330
- zeros, 81-82

highlight cell rules, 26-27**Histogram tool, 276, 282-284****HLOOKUP function, 92, 113, 192, 197-198**

- exact matches with, 200-201
- range lookups with, 198-199

holiday dates, calculating, 222-224**HOOR function, 229, 231****I****icon sets, 33-35****IF function, 112, 119-120, 130, 164-168**

- combining with array functions, 172-178
- division by zero, 167
- FALSE results, handling, 166
- nesting, 167-168

IFERROR function, 112, 119-120, 157, 164**Ignore Integer Constraints option (Solver), 414****importing custom AutoFill lists, 17****in-cell drop-down lists, exact-match lookups with, 201****income investment versus rental property investment, 462-463****independent variables, 368****INDEX function, 92, 192, 202-206****index summary calculations, 337-338****INDIRECT function, 432****inflation, 460-461****INFO function, 130, 181, 185-186****information functions**

- CELL function, 182-184
- ERROR.TYPE function, 184-185

INFO function, 185-186**IS functions, 187-189****list of, 181****SHEET function, 186-187****SHEETS function, 186-187****initial deposit, calculating amount of, 453****input tables. See data tables****Insert Function feature, 134-135****installing**

- Analysis ToolPak, 136
- Solver, 407

INT function, 238, 245**Integer Optimality option (Solver), 414****INTERCEPT function, 258, 376****interest costs, calculating, 431-432****interest on loan payments**

- calculating, 431-432
- cumulative interest, calculating, 433-434

interest rate

- compound interest, 446
- in investment formulas, 445-448
 - calculating, 450-451
 - future value calculations, 453-454
- in loan formulas, calculating, 439-440
- nominal rate
 - converting between effective rate and, 447-448
 - effective rate versus, 446-447

internal rate of return, calculating, 471-474

- IRR function, 472
- multiple internal rates of return, 473-474
- nonperiodic cash flows, 472-473

intersection operator, 57

- #NULL! error value, 115
- referring to overlapping ranges, 50-51

invalid cell references, 115-116**investment formulas**

future value, calculating, 448-450,
453-454

income investment versus rental prop-
erty investment, 462-463

initial deposit, calculating, 453

interest rate, 445-448

calculating, 450-451

investment goal, working toward,
450-454

investment schedule case study,
454-456

number of periods, calculating,
451-452

series of deposits, calculating, 452

investment goal, working toward, 450-454

investment schedule case study, 454-456

IPMT function, 431

IRR function, 472

ISBLANK function, 181, 187-188

ISERR function, 181

ISERROR function, 119-120, 181, 188-189

ISEVEN function, 181

ISFORMULA function, 181

ISLOGICAL function, 181

ISNA function, 181

ISNONTEXT function, 181

ISNUMBER function, 181, 188

ISODD function, 181

ISOWEENUM function, 213, 217

ISREF function, 181

ISTEXT function, 181

iteration

approximations in Goal Seek, 355-356

circular references and, 92-94

Iterations option (Solver), 415

J

Julian dates, calculating, 224

K

keyboard, range selection with, 7

keyboard shortcuts. See shortcut keys

KURT function, 258, 274-275

kurtosis, calculating, 274-275

L

labels, 324

LARGE function, 258, 265-266

last day of month, determining, 219-220

last names, extracting, 156-158

layouts, 324

LCM function, 238

leading articles, sorting without, 297-298

leap years, determining, 251

leasing versus buying, 463-464

ledger shading, creating, 251-252

LEFT function, 138, 153

LEN function, 138

less than operator, 56

less than or equal to operator, 56

Less Than rule, 26

letters, series of, 143-144

Limits report in Solver, 424-425

line breaks, in formulas, 54

line feeds, removing, 161-162

linear data, simple regression on, 368-381

best-fit lines, 369-376

forecasting, 377-381

LINEST function, 92, 258, 373-376

extending best-fit lines, 381

linking controls to cells, 104

links

- in formulas, 71
 - changing source, 74
 - updating, 73
- structure of, 71-73

list boxes, 107-108, 203-204**lists**

- custom lists, with AutoFill, 16-17
- filter lists, 298-301
- looking up values in, 174-176
- placement of values in, determining, 177-178

LN function, 238**loading**

- Analysis ToolPak, 136
- Solver, 407

loan amortization schedules, building, 434-437, 441-442**loan formulas**

- borrowing amount, calculating, 440-441
- interest rate, calculating, 439-440
- loan amortization schedules, 434-437
- loan payments, calculating, 429-434
- mortgage case study, 441-444
- term of loan, calculating, 437-439
- time value of money, 427-428

loan payments, calculating, 429-434

- balloon loans, 430-431
- cumulative principal and interest, 433-434
- interest costs, 431-432
- principal and interest components, 431-432

LOG function, 238**LOG10 function, 238****logarithmic trends, 393-396**

- calculating, 395-396
- plotting, 394-395

LOGEST function, 92, 258, 393-394**logical functions**

- accounts receivable aging worksheet case study, 178-180
- AND function, 168-170
- combining with array functions, 172-178
- conditional formatting with, 171-172
- IF function, 164-168
- list of, 164
- multiple logical tests, 167-171
- OR function, 170-171

LOOKUP function, 92, 192**lookup functions**

- CHOOSE function, 193-196
- exact matches with, 200-201
- HLOOKUP function, 197-198
- INDEX function, 202-206
- list of, 192
- lookup tables, types of, 192-193
- MATCH function, 202-206
- range lookups with, 198-199
- VLOOKUP function, 196-197

lookup tables, types of, 192-193**LOWER function, 138, 145****lowercase, converting text to, 145****lump sum, future value of, 448-449**

M**Macintosh computers, date system, 84****MATCH function, 92, 192, 202-206****math functions**

- adding values, 247-249
- list of, 238-239
- MOD function, 249-252
- random numbers, 252-255
- rounding functions, 241-246

Max Feasible Solutions option (Solver), 415
MAX function, 8, 258, 264-265, 296
Max Subproblems option (Solver), 415
Max summary calculation, 330
Max Time option (Solver), 414
MAXA function, 265
Maximum Time Without Improvement option (Solver), 416
MDETERM function, 92, 238
mean. See AVERAGE function
measures of dispersion, 266-269
measures of variation, 266-269
MEDIAN function, 258, 262
merging scenarios, 363
messages in Solver, 418
MID function, 138, 153
middle names, extracting, 157-158
MIN function, 8, 258, 264-265
Min summary calculation, 330
MINA function, 265
MINUTE function, 229, 231
MINVERSE function, 92, 238
MIRR function, 473-474
missing or mismatched parentheses in formulas, 116-117
MMULT function, 92, 238
MOD function, 238, 249-252
MODE function, 258, 262-263
model parameters (Solver), saving, 416-417
MODE.MULT function, 258, 262
MODE.SNGL function, 258, 262
money, time value of, 427-428
MONTH function, 194, 213, 215
monthly seasonal indexes, calculating, 386-387

months
 adding, 218
 determining last day of, 219-220
 of fiscal year, determining, 194-195
 weekdays, determining *n*th occurrence of, 220-222
mortgage case study, 441-444
mouse, range selection with, 6
Moving Average tool, 277
MROUND function, 238, 242, 247
MULTINOMIAL function, 238
multiple fields, sorting on, 294-295
multiple internal rates of return, calculating, 473-474
multiple logical tests, 167-171
multiple ranges in array formulas, 89-90
multiple regression, 368, 402-404
multiple worksheets
 consolidating multisheet data, 94-99
 range selection on, 7-8
 selecting, 7-8
multiple-column lookups, 206
multiplication operator, 56
multithreaded calculation, 61
Mutation Rate option (Solver), 416

N

N function, 181
NA function, 113, 181
Name box, defining range names, 38-39
Name Manager dialog box, 47, 48
named ranges. See range names
names, extracting, first/last/middle, 156-158
naming
 constants, 43-44
 formulas, 70-71
 rows/columns, 49-50

naming conventions for range names, 38

natural order, sorting tables in, 295-296

negation operator, 55

negative values in ranges, adding, 249

nesting

functions, 133

IF functions, 167-168

parentheses, 60

net present value, calculating, 465-469

nonperiodic cash flows, 468-469

NPV function, 466-467

varying cash flows, 467-468

NETWORKDAYS function, 180, 213, 227

New Name dialog box, defining range names, 39-40

NOMINAL function, 448

nominal rate

converting between effective rate and, 447-448

effective rate versus, 446-447

noncontiguous ranges, selecting, with mouse, 6

nonlinear data, simple regression on, 389-402

exponential trends, 389-394

logarithmic trends, 393-396

polynomial regression, 399-402

power trends, 396-399

non-negative constraints in Solver, 412

non-numeric values, checking ranges for, 188

nonperiodic cash flows

internal rate of return, 472-473

net present value with, 468-469

normal distributions

KURT function, 274-275

NORM.DIST function, 271-273

SKEW function, 273

normal random number distribution, 284

normal trend, calculating, 383-384

NORM.DIST function, 271-273

NORMDIST function, 271-273

not equal to operator, 56

NOT function, 164

NOW function, 148-149, 229-230

NPER function, 437, 451-452

NPV function, 466-467

number filters, 300

number of periods in investment formulas, calculating, 451-452

NUMBERVALUE function, 138, 146

numeric display formats, 74-82

changing, 75-78

condition values, 82

customizing, 78-81

deleting custom formats, 84

hiding zeros, 81-82

types of, 74-75

numeric series, with AutoFill, 15-16

O

ODD function, 238, 244-245

odd rows, adding, 250

OFFSET function, 442

one-input data tables, 346-349

operations research, 405-406. *See also* Solver

operator precedence, 57-60

operators

arithmetic operators

combining ranges with, 23-24

list of, 55-56

comparison operators, list of, 56

reference operators, list of, 57

in text formulas, 57

optimizing product margin, 354-355

option buttons, 105-106, 195-196

optional arguments, commas in, 131

order of precedence

controlling, 58-60

list of, 58

overlapping ranges, 50-51

P

padding cells with text, 151

parentheses in formulas, 59-60, 116-117

partial fields, sorting on, 296-297

past due dates, calculating, 180

Paste Special command, copying ranges, 22

cell attributes only, 22-23

combining arithmetically, 23-24

transposing rows and columns, 24-25

pasting

range name list, 47

range names in formulas, 67

patterned random number distribution, 284

payback period, calculating, 469-471

payments. See loan payments

percentage formats, 75

percentage operator, 56

percentage summary calculations, 333-335

PERCENTILE function, 259

PERCENTILE.EXC function, 258

PERCENTILE.INC function, 259

percentiles. See Rank and Percentile tool

PERCENTRANK.EXC function, 288

PERCENTRANK.INC function, 288

PI function, 238

PivotTable items, 324

calculated items, creating, 341-342

selecting, 328

PivotTables, 321-323

building

from external databases, 327-328

from tables or ranges, 324-327

Calculation property, setting, 337

clearing, 329

custom calculations, 338-342

calculated fields, 340-341

calculated items, 341-342

restrictions on, 339-340

data field summary calculations

changing, 330

difference calculations, 330-332

index calculations, 337-338

list of, 330-331

percentage calculations, 333-335

running total calculations, 336-337

filtering, 328

formatting, 328

grand totals in, hiding, 329

grouping data, 328-329

refreshing, 328

removing fields, 329

renaming, 328

results in worksheet formulas, 343-344

selecting, 328

sorting, 328

subtotals in, 329-330

terminology, 324

planning tables, 290

plotting

best-fit lines, 369-370

exponential trends, 389-391

forecasted values, 377-378

logarithmic trends, 394-395

- polynomial trends, 400-401
- power trends, 397-398
- PMT function, 130, 429-431, 452**
- Point mode (formulas), 55**
- Poisson random number distribution, 284**
- polynomial regression, 368, 399-402**
 - calculating, 401-402
 - plotting, 400-401
- Population Size option (Solver), 415**
- position, consolidating multisheet data by, 95-98**
- positive values in ranges, adding, 249**
- POWER function, 238**
- power trends, 396-399**
 - calculating, 398-399
 - plotting, 397-398
- PPMT function, 431**
- precedents**
 - defined, 124
 - selecting cells by, 12
 - shortcut keys, 13
 - tracing, 124-125
- prepayments on mortgage principal, 443-444**
- present value, calculating, 460-464**
 - buying versus leasing, 463-464
 - income investment versus rental property investment, 462-463
 - inflation, 460-461
 - PV function, 461-462
- preventing calculation errors, 245-246**
- price points, calculating, 246**
- principal on loan payments**
 - borrowing amount, calculating, 440-441
 - calculating, 431-432
 - cumulative principal, calculating, 433-434

- prepayments on, 443-444
- PRODUCT function, 8, 238**
- product margin, optimizing, 354-355**
- Product summary calculation, 330**
- proper case, converting text to, 145**
- PROPER function, 138, 145**
- properties of tables, 289**
- publishing books case study, 474-477**
- PV function, 440, 453, 461-462**

Q

- question mark (?) wildcard character, 301**
- quick filters, 300-301**
- quotation marks. *See* single quotation marks in links**
- QUOTIENT function, 238**

R

- RADIANS function, 240**
- RAND function, 238, 253-255**
- RANDBETWEEN function, 238, 255**
- random letters, generating, 254**
- Random Number Generation tool, 277, 283-286**
- random numbers, generating, 252-255**
- Random Seed option (Solver), 415**
- randomly sorting data, 254-255**
- range, calculating, 267**
- range names**
 - absolute references in, 64
 - advantages of, 37-38
 - AutoComplete with, 46
 - changing, 50
 - defining
 - with Name box, 38-39
 - with New Name dialog box, 39-40

- scope changes, 41
- with worksheet text, 41-43
- deleting, 50
 - avoiding #NAME? errors, 114-115
 - converting to cell references, 114
- editing range coordinates, 48-50
- in formulas
 - applying to existing, 68-70
 - pasting, 67
- Name Manager dialog box, 47-48
- naming conventions, 38
- overlapping ranges, 50-51
- pasting list of, 47
- referring to, 44-46
- selecting ranges with, 47
- troubleshooting, 40
- viewing range location, 44

range operator, 57**ranges**

- advantages of, 5
- applying conditions across, 173
- array formulas and, 89-90
- building PivotTables from, 324-327
- clearing, 25
- conditional formatting, 25-26
 - color scales, 32-34
 - data bars, 29-32
 - highlight cell rules, 26-27
 - icon sets, 33-35
 - top/bottom rules, 28-29
- converting to tables, 291-292
- copying, 22
 - cell attributes only, 22-23
 - combining arithmetically, 23-24
 - transposing rows and columns, 24-25
- copying filtered data to, 306

- counting blank cells in, 187-188
- counting errors in, 188
- counting occurrences of values, 176-177
- criteria ranges
 - compound criteria in, 304
 - computed criteria in, 305
 - filtering tables with, 302-303
 - setting up, 302
 - in table functions, 315-318
- data entry in, 14
- deleting, 25
- filling, 14
 - with fill handle, 15-18
 - Flash Fill feature, 18-20
 - Series command, 20-21
- ignoring errors, 188-189
- lookups with, 198-199
- non-numeric values, checking for, 188
- overlapping, 50-51
- positive/negative values, adding, 249
- selecting, 5-6
 - 3D ranges, 7-8
 - with Go To command, 8-9
 - with Go To Special dialog box, 9-13
 - with keyboard, 7
 - with mouse, 6
 - with range names, 47
 - with Zoom command, 9

Rank and Percentile tool, 277, 286-288**RANK function, 259****RANK.AVG function, 259, 288****RANK.EQ function, 259, 288****RATE function, 439, 450-451****recalculating**

- data tables, 350
- formulas, 117

recalculating formulas, controlling manually, 60-61

records, 289

- adding, 292
- deleting, 293
- filtered records, displaying, 301
- selecting, 292

reference formulas, 57

reference operators, list of, 57

references

- absolute references, 64
- external references, 71-73
- ignoring when applying range names, 68-69
- relative references, 62-65
- selecting cells by, 12

referencing

- tables in formulas, 307-309
 - entering table formulas, 309
 - table specifiers, 307-309

referring

- to overlapping ranges, 50-51
- to range names, 44-46

refreshing PivotTables, 328

regression analysis, 367-368

- multiple regression analysis, 402-404
- seasonal sales model case study, 382-389
- simple regression on linear data, 368-381
 - best-fit lines, 369-376
 - forecasting, 377-381
- simple regression on nonlinear data, 389-402
 - exponential trends, 389-394
 - logarithmic trends, 393-396
 - polynomial regression, 399-402
 - power trends, 396-399
- types of, 368

regression equations, 370-371, 379-380

Regression tool, 277

relative references, 62-65, 68-69

removing

- characters from strings, 160-161
- line feeds, 161-162
- PivotTable fields, 329
- table filters, 301
- tracer arrows, 125
- unwanted characters, from strings, 149-150

renaming

- PivotTables, 328
- tables, 293

rental property investment versus income investment, 462-463

repeating text characters, 150-152

REPLACE function, 138, 159

reports in Solver, 421-425

- Answer report, 421-422
- Limits report, 424-425
- Sensitivity report, 423-424

REPT function, 138, 150-152

Require Bounds on Variables option (Solver), 416

reseasoned trend, calculating, 388

resizing tables, 293

RIGHT function, 138, 153

ROMAN function, 238

ROUND function, 238, 241

ROUNDDOWN function, 238, 242

rounding billable time case study, 247

rounding functions, 241-246

ROUNDUP function, 239, 242

row fields, 324

ROW function, 92, 432

row-and-column lookups, 205-206**rows**

- adding every *n*th row, 250
- ledger shading, creating, 251-252
- naming, 49-50
- transposing with columns, 24-25

ROWS function, 92**RSQ function, 259, 376****R-squared, 371-372****RTD function, 192****running total summary calculations, 336-337**

S

sales versus advertising trends, 376**Sampling tool, 277****saving**

- Solver model parameters, 416-417
- Solver solutions as scenarios, 412

Scenario Manager, 358-365

- adding scenarios, 360-361
- deleting scenarios, 365
- displaying scenarios, 361-362
- editing scenarios, 362
- generating summary reports, 363-365
- merging scenarios, 363
- setting up worksheet for, 359

scenarios, 358-365

- adding, 360-361
- deleting, 365
- displaying, 361-362
- editing, 362
- generating summary reports, 363-365
- merging, 363
- saving Solver solutions as, 412
- setting up worksheet for, 359

scientific formats, 75**scope of range names**

- referring to, 44-46
- setting, 41

scroll bars, 108-109**Scroll Lock, scrolling through selected cells, 7****SEARCH function, 138, 155-156****searching substrings, 155-156****seasonal forecast, calculating, 388****seasonal sales model case study, 382-389****seasonal trend, calculating, 385-386****SEC function, 240****SECH function, 240****SECOND function, 229, 231****selected cells, scrolling through, 7****selecting**

- engines (Solver), 413
- fields, 292
- multiple worksheets, 7-8
- PivotTable items, 328
- PivotTables, 328
- ranges, 5-6
 - 3D ranges, 7-8
 - with Go To command, 8-9
 - with Go To Special dialog box, 9-13
 - with keyboard, 7
 - with mouse, 6
 - with range names, 47
 - with Zoom command, 9
- records, 292
- tables, 292

Sensitivity report in Solver, 423-424**sentence case, converting text to, 153-154****serial numbers for dates and times, 209-210**

series, creating. *See also* ranges, filling

with AutoFill, 15-16

with Series command, 20-21

Series command, 20-21, 378-379

series of deposits

calculating amount of, 452

future value of, 449

series of letters, 143-144

SERIESSUM function, 239

server workbooks, 71

shaded rows, creating, 251-252

SHEET function, 181, 186-187

SHEETS function, 181, 186-187

shortcut keys

data entry in ranges, 14

date and time display formats, 83

dates and times, entering, 211

for Go To Special selections, 13

numeric display formats, 78

Show Iteration Results option (Solver), 414

SIGN function, 239

simple regression, 368

on linear data, 368-381

best-fit lines, 369-376

forecasting, 377-381

on nonlinear data, 389-402

exponential trends, 389-394

logarithmic trends, 393-396

polynomial regression, 399-402

power trends, 396-399

Simplex LP engine, 413

SIN function, 240

single quotation marks in links, 71-73

SINH function, 240

SKEW function, 259, 273

slope, calculating, 373-376

SLOPE function, 259, 376

SMALL function, 259, 265-266

Solver

advantages of, 406

break-even analysis, 407-410

constraints, adding, 410-412

engines, selecting, 413

loading, 407

messages, 418

non-negative constraints in, 412

reports in, 421-425

Answer report, 421-422

Limits report, 424-425

Sensitivity report, 423-424

saving model parameters, 416-417

saving solutions as scenarios, 412

setting options in, 413-416

transportation problem case study,
419-421

when to use, 406-407

sorting

PivotTables, 328

tables, 293-298

on multiple fields, 294-295

in natural order, 295-296

on partial fields, 296-297

without leading articles, 297-298

sorting values randomly, 254-255

source workbooks, 71, 74

spaces, replacing line feeds with, 161-162

special formats, 75

specifiers. *See* table specifiers

spin boxes, 108-109

SQRT function, 239

SQRTPI function, 239

standard deviation, calculating, 268-269

statistical functions

Analysis ToolPak, 275-288

AVERAGE function, 261-262

- COUNT function, 261
- defects database case study, 318-319
- descriptive statistics, 260
- frequency distributions, 270-275
- FREQUENCY function, 270-271
- KURT function, 274-275
- LARGE function, 265-266
- list of, 257-259
- MAX function, 264-265
- measures of variation, 266-269
- MEDIAN function, 262
- MIN function, 264-265
- MODE function, 262-263
- normal distributions, 271-273
- SKEW function, 273
- SMALL function, 265-266
- weighted mean, calculating, 263-264
- StdDev summary calculation, 331**
- StdDevp summary calculation, 331**
- STDEV function, 8, 259, 268-269**
- STDEVA function, 269**
- STDEV.P function, 259, 268-269**
- STDEV.P function, 8**
- STDEVPA function, 269**
- STDEV.S function, 259**
- strings. *See* text
- SUBSTITUTE function, 138, 160**
- substituting substrings, 159-160
- substrings
 - extracting, 152-153
 - searching, 155-156
 - substituting, 159-160
- SUBTOTAL function, 239**
- subtotals in PivotTables, 329-330
- subtracting
 - date values, 224-229
 - time values, 233, 250
- subtraction operator, 55
- SUM function, 8, 130, 239, 247-249**
- Sum summary calculation, 330**
- SUMIF function, 239, 312**
- SUMIFS function, 314**
- summary calculations for data fields
 - changing, 330
 - difference calculations, 330-332
 - index calculations, 337-338
 - list of, 330-331
 - percentage calculations, 333-335
 - running total calculations, 336-337
- summary reports, generating, 363-365
- summary statistics. *See* descriptive statistics
- SUMPRODUCT function, 92, 239**
- SUMSQ function, 239**
- SUMX2MY2 function, 239**
- SUMX2PY2 function, 239**
- SUMXMY2 function, 239**
- symbols. *See also* icon sets
 - for date and time formatting, 84-85
 - for numeric formatting, 79

T

T function, 138

TABLE function, 351

table functions

- advantages of, 310
- AVERAGEIF function, 312-313
- AVERAGEIFS function, 315-318
- COUNTIF function, 311
- COUNTIFS function, 313-314
- DAVERAGE function, 317
- defects database case study, 318-319
- DGET function, 317-318

SUMIF function, 312

SUMIFS function, 314

table ranges, 289

table specifiers, 307-309

tables. See also data tables

building PivotTables from, 324-327

converting ranges to, 291-292

fields. *See* fields

filtering, 298-306

with complex criteria, 301-305

copying to different range, 306

with filter lists, 298-301

removing filters, 301

formatting, 293

PivotTables. *See* PivotTables

planning, 290

properties of, 289

records. *See* records

referencing in formulas, 307-309

entering table formulas, 309

table specifiers, 307-309

renaming, 293

resizing, 293

selecting, 292

sorting, 293-298

on multiple fields, 294-295

in natural order, 295-296

on partial fields, 296-297

without leading articles, 297-298

totals, displaying, 293

TAN function, 240

TANH function, 240

tax rates, determining, 199

term of loan, calculating, 437-439

text

account numbers, generating,
154-155, 161

characters

counting in strings, 160

removing from strings, 160-161

column letters, determining, 158-159

converting

to date, 215

to decimal number, 145-146

to lowercase, 145

to proper case, 145

to sentence case, 153-154

to time, 230

to uppercase, 145

converting formulas to, 65, 112

date-conversion formula, 154

formatting, 146-149

names, extracting first/last/middle,
156-158

random letters, generating, 254

repeating characters, 150-152

substrings

extracting, 152-153

searching, 155-156

substituting, 159-160

unwanted characters, removing,
149-150

viewing formulas as, 59, 65-66

from worksheet, defining range
names, 41-43

text filters, 300

text formulas, 57

TEXT function, 138, 148

text functions, 138

ANSI character codes, 141-144

CHAR function, 141-143

CLEAN function, 150

CODE function, 144

DECIMAL function, 145-146

DOLLAR function, 147
 FIND function, 155-156
 FIXED function, 147-148
 LEFT function, 153
 list of, 138
 LOWER function, 145
 MID function, 153
 NUMBERTIME function, 146
 PROPER function, 145
 REPLACE function, 159
 REPT function, 150-152
 RIGHT function, 153
 SEARCH function, 155-156
 SUBSTITUTE function, 160
 TEXT function, 148
 TRIM function, 149-150
 UPPER function, 145

text series with AutoFill, 15-16

Text That Contains rule, 26

text-based charts, building, 151-152

tiered payments, calculating, 168

time and date display formats, 82-85

customizing, 84-85

deleting custom formats, 84-85

TIME function, 229-230

time functions

adding time values, 232-233

calculating future times, 231-232

difference between times, calculating,
 233, 250

employee time sheet case study,
 233-236

HOUR function, 231

list of, 229

MINUTE function, 231

NOW function, 229-230

SECOND function, 231

TIME function, 230

TIMEVALUE function, 230

time sheet case study, 233-236

time value of money, 427-428

times

adding, 232-233

entering, 210-211

serial numbers for, 209-210

TIMEVALUE function, 229-230

TODAY function, 213-214

Top 10 Items rule, 28

Top 10% rule, 28

top k values, calculations on, 265-266

top/bottom rules, 28-29

totals

cumulative totals, calculating, 248

in tables, displaying, 293

tracer arrows, 119

cell dependents, 125

cell errors, 125

cell precedents, 124-125

removing, 125

types of, 124-125

**transportation problem case study,
 419-421**

TRANSPOSE function, 92

transposing rows and columns, 24-25

trend analysis. See regression analysis

TREND function, 92, 259, 372-373

extending best-fit lines, 380

forecast trend, calculating, 384

normal trend, calculating, 383-384

seasonal trend, calculating, 385-386

trendlines. See best-fit lines

trigonometric functions, list of, 240

TRIM function, 138, 149-150

troubleshooting

- formulas, 111-112
 - auditing worksheets, 124-127
 - circular references, 118-119
 - erroneous results, 117-118
 - error values, 112-116
 - formula error checker, 120-123
 - IFERROR function, 119-120
 - missing or mismatched parentheses, 116-117
- range names, 40
- TRUE function, 164**
- TRUE logical value, 55**
- TRUNC function, 239, 245**
- TTEST function, 259**
- t-Test: Paired Two-Sample for Means tool, 277**
- t-Test: Two-Sample Assuming Equal Variances tool, 277**
- t-Test: Two-Sample Assuming Unequal Variances tool, 278**
- two-digit years, 211-212**
- two-input data tables, 349-350**
- TYPE function, 181**
- typing functions into formulas, 132-133**

U

-
- undiscounted payback period, calculating, 469-470**
 - uniform random number distribution, 284**
 - union operator, 57**
 - unwanted characters, removing from strings, 149-150**
 - updating links, 73**
 - UPPER function, 138, 145**
 - uppercase, converting text to, 145**
 - Use Automatic Scaling option (Solver), 413**
 - Use Multistart option (Solver), 415**

V**validation. See data validation****VALUE function, 138****values**

- adding, 247-249
- average values, calculating, 261-264
- bottom k values, calculations on, 266
- converting formulas to, 66
- counting occurrences in ranges, 176-177
- extreme values, calculating, 264-266
- forecasted values, plotting, 377-378
- looking up in lists, 174-176
- maximum range of, 116
- non-numeric values, checking ranges for, 188
- placement in lists, determining, 177-178
- positive/negative values in ranges, adding, 249
- putting into categories, 169-170
- randomly sorting, 254-255
- top k values, calculations on, 265-266
- watching cell values, 126-127
- VAR function, 8, 259, 267-268**
- Var summary calculation, 331**
- VARA function, 268**
- variable-rate mortgage amortization schedules, building, 441-442**
- variance, calculating, 267-268**
- VAR.P function, 259, 267-268**
- VARP function, 8**
- Varp summary calculation, 331**
- VARPA function, 268**
- VAR.S function, 259, 267-268**
- varying cash flows, net present value with, 467-468**

viewing. *See also* displaying

- active cell, 6
- Developer tab, 102-103
- formulas as text, 59, 65-66
- range name locations, 44

visibility, selecting cells by, 13**VLOOKUP function, 92, 113, 192, 196-197**

- exact matches with, 200-201
- range lookups with, 198-199

W

Watch Window, 126-127**watching cell values, 126-127****WEEKDAY function, 179, 193-194, 213, 216, 220-222****weekdays, determining *n*th occurrence of, 220-222****WEEKNUM function, 213, 216-217****weighted mean, calculating, 263-264****weighted questionnaire results, calculating, 195****what-if analysis, 345-351**

- adding formulas to data tables, 348-349
- editing data tables, 351
- one-input data tables, 346-348
- Scenario Manager, 358-365
 - adding scenarios, 360-361
 - deleting scenarios, 365
 - displaying scenarios, 361-362
 - editing scenarios, 362
 - generating summary reports, 363-365
 - merging scenarios, 363
 - setting up worksheet for, 359
- two-input data tables, 349-350

wildcard characters, 301**Windows computers**

- date system, 84
- two-digit years, 211-212

workbooks. *See also* worksheets

- displaying when last updated, 148-149
- linking, 71

WORKDAY function, 179, 213, 217-218**workdays, calculating difference between, 227****worksheet text, defining range names, 41-43****worksheets.** *See also* workbooks

- auditing, 124-127
 - evaluating formulas, 126
 - removing tracer arrows, 125
 - tracer arrows, types of, 124-125
 - tracing cell dependents, 125
 - tracing cell errors, 125
 - tracing cell precedents, 124-125
 - watching cell values, 126-127

dialog box controls on, 102-109

- adding, 103-104
- check boxes, 106-107
- combo boxes, 107-108
- Developer tab, viewing, 102-103
- Form Controls list, 103
- group boxes, 105
- linking to cells, 104
- list boxes, 107-108
- option buttons, 105-106
- scroll bars, 108-109
- spin boxes, 108-109

list boxes, lookups with, 203-204**multiple worksheets**

- range selection on, 7-8
- selecting, 7-8

option buttons, CHOOSE function and, 195-196

setting up for Goal Seek, 352

setting up for scenarios, 359

X

x-values, 368

XIRR function, 472-473

XNPV function, 468-469

Y

y-intercept, calculating, 373-376

y-values, 368

YEAR function, 213, 215

YEARFRAC function, 213, 228-229

years

 leap years, determining, 251

 two-digit years, 211-212

Z

z-Test: Two-Sample for Means tool, 278

zeros

 dividing by, 112, 167

 hiding, 81-82

Zoom command, range selection with, 9

ZTEST function, 259