



# WALTHERS®

# FLYER

Your Number One Resource for Model Railroad Product Information

## **EXCITING NEW PRODUCTS**

Starting on page 4

**IN STOCK NOW!**

## **MODERNIZED TRUSS BRIDGE**

Details on page 13

**September 2015**

Sale Ends 10-15-2015



**ONLY IN THIS ISSUE  
LABORDAY SALE**

Find a Hobby Shop Near You! Visit [walthers.com](http://walthers.com) or call 1-800-487-2467

## CONTENTS

Walthers Flyer First Products	Pages 4-11
New Products from Walthers	Pages 12-15
Labor Day Sale	Pages 16 & 17
The New <i>Broadway Limited</i>	Page 18
Walthers Giant Warehouse Sale	Page 19
HO Scale	Pages 20-33, 36-48
N Scale	Pages 54-54
Walthers 2016 Reference Books	Page 49
Mixed Scales & Any Scale	Pages 54-57
All Scale	Pages 57-66
New Walthers Cornerstone® Structures	Page 67
Featured Online Products	Pages 67a-67e

### ON THE COVER

Air horns shout their greetings as east and westbound stack trains scorch past in a blaze of color. With detailed models right out of today's railroading, it's easy to add the same excitement to your HO layout. Start with the new Modernized Double-Track Railroad Truss Bridge kit from Cornerstone with parts to clear today's taller cars, listed on page 13 inside. Add colorful cars like the all-new 53' Gunderson Rebuilt All-Purpose Well Cars from WalthersProto®, Walthers SceneMaster™ 53' Singamas Containers, then couple up your favorite power and let the fun begin.



## WELCOME

Time to hit your books – the new Walthers Flyer and Reference Books that is. Study the following pages for great new product news, super savings and much more.

Get your modeling back on track with a new project at a great price in our Labor Day Sale. See the complete selection of savings on pages 16 & 17.

East meets west as we roll out new roadnames for WalthersMainline® Alco PA-PB locos in HO. Read about these new models with a plated and painted finish on page 4.

From plastics to petroleum, colorful new schemes on the Type 21 ACF 8,000-Gallon Tank Car add variety to steam and diesel layouts. See the complete list on page 5.

Freight traffic will be booming on period layouts with the newest WalthersMainline cars in HO, including the all-new 36' 3-Dome Tank Car, plus new roadnames for Drop-Bottom Gondolas and 40' AAR 1944 Boxcars. Turn to pages 5 & 6 for more.

The fun keeps rolling when you add the new WalthersTrainline™ Boxcars and Tank Cars to your HO railroad. See page 7 for the complete list of colorful new schemes.

Start a building boom with the Williams Industrial Electric Motors, the Public Library, and the return of three of your favorite structure kits! Turn to pages 8 & 9 for the latest from Walthers Cornerstone.

Brighten any HO layout with ready-to-use Street Lights, Grade Crossing Signals and Traffic Lights making their Walthers SceneMaster debut on pages 10 & 11 inside.

Find out more about these new models at [walthers.com](http://walthers.com), by calling us at 1-800-487-2467 or visit your participating hobby shop to reserve any product in this issue.

Happy modeling!

Phil Walther



# A FRESH LOOK AT TOMORROW

**P**ulling out all the stops to make passenger trains profitable, the combined efforts of the consolidated B&O and C&O are shining through in today's *Capitol Limited* consist. Innovative new ideas are everywhere, from ticket sales to the paint booth, where cars are starting to return to service in a bright new color scheme. We're in time to see one of the freshly shopped 56-seat coaches – but not for long as the E9s on the point dig in and accelerate out of town!

Many postwar streamliners added or expanded coach service in the 1950s, and upgrading your flagship is easy with the new WalthersProto® 85' Pullman-Standard 56-Seat Coach.

## **NEW HO WalthersProto 85' Pullman-Standard 56-Seat Coach**

920-15601 B&O (Post 1964 blue, yellow, gray) \$69.98

## **NEW HO WalthersProto 85' Pullman-Standard City Series 56-Seat Coach**

920-9401 Baltimore & Ohio (original gray, blue) \$69.98

## **NEW HO WalthersProto 85' Budd Land Series 24-8 Slumbercoach Sleeper**

920-9403 B&O (real metal finish) \$79.98

## **NEW HO WalthersProto 85' Budd Bird Series 16-4 Sleeper**

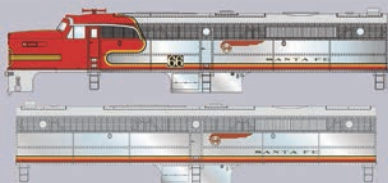
920-9404 B&O (partial metal finish) \$79.98

## **SAVE A TREE – GO PAPERLESS!**

Switch to Walthers online Flyer at [walthers.com](http://walthers.com) for quick and easy downloading and ordering. To be removed from the mailing list, contact customer service at 1-800-487-2467 or email your customer number, name and address to [custserv@walthers.com](mailto:custserv@walthers.com).

## WHAT'S INSIDE

*Flyer First*



HO WalthersMainline Alco PA & PB pg 4

*Flyer First*



HO WalthersProto 32' 6" Type 21  
ACF 8,000-Gallon Tank Car pg 5

*Flyer First*



HO Cornerstone Public Library pg 8



# Flyer First

**Order Today!**

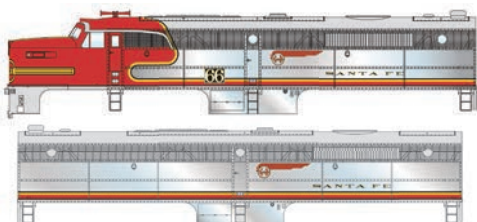
## MAKING RAILROAD HISTORY **WALTHERS MAINLINE**

### **NEW HO** WaltherMainline® Alco PA & PB

April 2016 Delivery

- **Limited edition – one time run of these roadnumbers!**
- Prototypes in passenger service 1946 to 1968
- Available with factory-installed SoundTraxx® sound for DCC & DC layouts
  - \* 16-bit digital quality sound
  - \* Horn & short horn toot
  - \* Bell
  - \* Prime mover
  - \* 3 lighting functions

- Same powerful drive as WaltherProto® locos featuring:
  - \* 5-pole skew-wound motor
  - \* 14:1 gear ratio
  - \* Helical-cut gears for quiet operation & easy multiple unit operation
  - \* All-wheel drive & electrical pickup
  - \* Dual machined brass flywheels
  - \* Heavy die cast chassis
  - \* Constant & directional lights
- Factory-installed handrails
- Molded drill starter points for grab irons (sold separately)
- RP-25 metal wheels
- Proto MAX™ metal knuckle couplers



#### **Santa Fe - Passenger Warbonnet**

- Plated & painted finish
- Roof-mounted numberboard
- Working Mars light on PA

#### **PA-PB Sets**

SoundTraxx® Sound & DCC \$459.98 Each

Standard DC \$319.98 Each

910-20063 #55L, 55A SoundTraxx Sound & DCC

910-20064 #67L, 71A SoundTraxx Sound & DCC

910-10063 #54L, 54A Standard DC

910-10064 #66L, 57A Standard DC

#### **Matching PA Units**

SoundTraxx® Sound & DCC \$239.98 Each

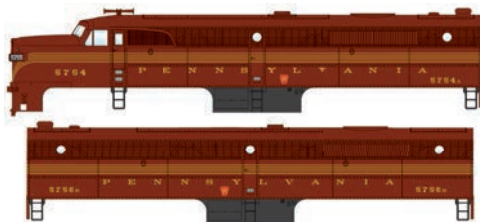
Standard DC \$169.98 Each

910-20065 #63L SoundTraxx Sound & DCC

910-20066 #71L SoundTraxx Sound & DCC

910-10065 #57L Standard DC

910-10066 #69L Standard DC



#### **Pennsylvania - Five-Stripe Tuscan**

- Perfect for use with new WaltherProto P70 Coaches
- Working Mars light on PA

#### **PA-PB Sets**

SoundTraxx® Sound & DCC \$419.98 Each

Standard DC \$279.98 Each

910-20067 #5754A, #5756B SoundTraxx Sound & DCC

910-20068 #5755A, #5758B SoundTraxx Sound & DCC

910-10067 #5754A, #5756B Standard DC

910-10068 #5755A, #5758B Standard DC

#### **Matching PA Units**

SoundTraxx® Sound & DCC \$219.98 Each

Standard DC \$149.98 Each

910-20069 #5756A SoundTraxx Sound & DCC

910-20070 #5759A SoundTraxx Sound & DCC

910-10069 #5756A Standard DC

910-10070 #5759A Standard DC

#### **Undecorated**

- Dynamic Brakes
  - Small Numberboards
- 910-10050 Standard DC \$149.98

# MAKING RAILROAD HISTORY WALTHERSPROTO®

## NEW HO Walther'sProto®

### 32' 6" Type 21 ACF

#### 8,000-Gallon Tank Car

January 2016 Delivery • \$41.98 Each

- Limited edition – one time run of these roadnumbers!
- Used to haul a variety of oils & other liquids
- 1000s of cars with this common design served North America for 4 decades
- Factory-installed grab irons
- 50-ton spring plankless trucks
- Detailed underbody with AB brake equipment
- Ultra-smooth rolling metal axles & 33" wheelsets
- Proto MAX™ metal knuckle couplers



#### Bakelite

920-100329 #20124

920-100330 #20400



#### Chicago Tank Car

920-100331 #1102

920-100332 #1139



#### Mid Continent

920-100333 #2955

920-100334 #2958



#### Shell/RPX

920-100335 #2332

920-100336 #2382

# MAKING RAILROAD HISTORY WALTHERSMAINLINE®

## NEW HO Walther'sMainline®

### 40' AAR 1944 Boxcar

September 2015 Delivery • \$24.98 Each

- Limited edition – one time run of these roadnumbers!
- 1000s used in general freight service 1944 to 1980s
- 2 different car numbers per roadname
- See-through running boards
- 4-4 improved dreadnaught ends
- 6' Youngstown doors
- Murphy panel roof
- 10' 6" interior height
- AAR (tab) side sills
- Correct 33" turned-metal wheelsets
- Proto MAX metal knuckle couplers



#### Monon (The Hoosier Line)

910-1675 #254

910-1676 #255



#### Denver & Rio Grande Western†

910-1677 #67682

910-1678 #67686



#### Louisville & Nashville

(The Old Reliable)

910-1679 #15001

910-1680 #15013



#### New York Central (Pacemaker)

910-1681 #174058

910-1682 #174136



#### Reading

910-1683 #104013

910-1684 #104030



#### Western Pacific†

(The Western Way)

910-1685 #20551

910-1686 #20555

**Don't miss out on any of Walther's exciting new products.**

## HO Walther'sMainline Alco PA & PB

Santa Fe - Passenger  
Warbonnet, Pennsylvania -  
Five-Stripe Tuscan,  
Undecorated

## HO Walther'sProto 32' 6" Type 21 ACF 8,000-Gallon Tank Car

Bakelite, Chicago Tank Car,  
Mid Continent, Shell/RPX

## HO Walther'sMainline 40' AAR 1944 Boxcar

Monon, DRGW†, L&N, NYC,  
RDG, WP†

## HO Walther'sMainline 40' 50-Ton Composite Drop-Bottom Gondola

CNW, DRGW†, SOU, SP† (logo  
at side), SP† (centered logo)

## HO Walther'sMainline

### 36' 3-Dome Tank Car

Kanotex, North American/  
NATX, Pan Am Oil/SHPX,  
Shell/SCMX, Sunoco, Union  
Tank Car/UTLX, Undecorated

## HO Walther'sTrainline™ Boxcar

CP, MILW, NH, SP†, WP†

## HO Walther'sTrainline Tank Car

ATSF, Montana Rail Link, NS

## HO Cornerstone® Kits

Williams Industrial Motors,  
Public Library

## HO Cornerstone Kits

Benson's Five & Dime,  
J.C. Landry Feed & Supply,  
Rocky Pint Lighthouse

## HO SceneMaster™

### Working Lights

## HO SceneMaster Grade

### Crossing Signals &

### Signal Controller

## HO SceneMaster Traffic

### Lights & Traffic Light

### Controller

**Be the first to order –**

**they may be gone before you know it.**

**Reserve these new products at your hobby shop, or order before September 30, 2015.**

†Union Pacific licensed product

# Flyer First

Order Today!

## MAKING RAILROAD HISTORY WALTHERSMAINLINE.

### NEW HO WaltherMainline®

#### 36' 3-Dome Tank Car

January 2016 Delivery  
\$27.98 Each

- Limited edition – one time run of these roadnumbers!
- Prototypes hauled petroleum, chemicals & similar liquid loads in 3 compartments
- In service late 1920s to 1960s
- Detailed underbody with AB brakes
- Fully assembled
- Correct 33" turned-metal wheelsets
- Proto MAX™ metal knuckle couplers



#### Kanotex

910-1101 #879  
910-1102 #876



#### North American/NATX

910-1103 #7059  
910-1104 #7067



#### Pan Am Oil/SHPX

910-1105 #89  
910-1106 #90



#### Shell/SCMX

910-1107 #651  
910-1108 #652



#### Sunoco

910-1109 #2600  
910-1110 #2602



#### Union Tank Car/UTLX

910-1111 #3751  
910-1112 #3752

Undecorated 910-1100

## MAKING RAILROAD HISTORY WALTHERSMAINLINE.

### NEW HO WaltherMainline 40' 50-Ton

#### Composite Drop-Bottom Gondola

January 2016 Delivery • \$24.98 Each

- Limited edition – one time run of these roadnumbers!



#### Chicago & North Western†

910-5675 #24796 910-5676 #24799



#### Denver & Rio Grande Western†

910-5677 #73313 910-5678 #73310



#### Southern

910-5679 #292099 910-5680 #292096

†Union Pacific licensed product

- Moved coal, stone, steel & other loose loads
- Prototypes in service 1900s to 1950s
- 2 car numbers for each roadname
- Correct 33" turned-metal wheelsets
- Proto MAX metal knuckle couplers



#### Southern Pacific† (SP Logo at Side)

910-5681 #56333 910-5682 #56340



#### Southern Pacific† (Centered SP Logo)

910-5683 #56805 910-5684 #56809

# MAKING RAILROAD HISTORY WALTHERSTRAINLINE™

## NEW HO WaltherTrainline™ Boxcar

September 2015 Delivery

\$17.98 Each

- Colorful paint & lettering schemes
- Fully assembled
- Built tough for years of fun
- Magnetic knuckle couplers
- RP-25 metal wheels



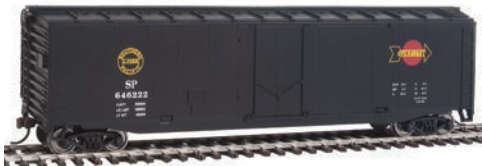
931-1404 Canadian Pacific



931-1405 Milwaukee Road



931-1406 New Haven



931-1407 Southern Pacific†



931-1408 Western Pacific†

# MAKING RAILROAD HISTORY WALTHERSTRAINLINE™

## NEW HO WaltherTrainline Tank Car

September 2015 Delivery

\$17.98 Each

- Colorful addition to any HO train set
- Ready to use & enjoy
- Built tough for years of fun
- Magnetic knuckle couplers
- RP-25 metal wheels



931-1444 Santa Fe



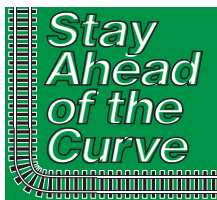
931-1445 Canadian National



931-1446 Montana Rail Link



931-1447 Norfolk Southern



Get the latest news  
on Walther's products  
& delivery updates  
at [walthers.com](http://walthers.com)

†Union Pacific licensed product

# Flyer First

Order Today!



**NEW HO Cornerstone® Public Library Kit**

November 2015 Delivery • \$49.98 Each

- Typical of American libraries built 1900s to late 1930s
- Found in many smaller towns & cities where many still serve the community today
- Easily used as city hall, police station, courthouse, school or other public building
- Traditional large entry with elevated stairway
- Highly detailed plastic parts simulating stone & brick construction
- Finely molded windows & doors
- Molded in 3 colors & clear plastic

933-3493 Public Library



**NEW HO Cornerstone Williams Industrial Electric Motors Kit**

October 2015 Delivery • \$54.98 Each

- Big city industry that fits a small space
- Perfect for steam, diesel & modern eras
- Front & rear loading areas for truck & rail service
- 5-story brick & block construction
- Separate dock, entry and overhead doors
- Art Deco era details for front wall
- Detailed rooftop elevator machinery house & skylights
- Colorful printed signs
- Molded cut lines for easy conversion to background building
- Molded in 3 colors & clear plastic

933-3788 Williams Industrial Electric Motors



**NEW HO Cornerstone® Rocky Point Lighthouse Kit**

September 2015 Delivery • \$59.98 Each

- Realistic detail for any waterfront
- Includes tower & keeper's quarters
- Flashing LED for tower
- Fits all popular modeling eras
- Walls & trim molded in 2 realistic colors as one complete part
- Simple snap-together assembly with minimal gluing
- Window mullions molded into "glass" for true-to-scale look
- Full-color printed drapes & window detail sheet
- Molded in 7 realistic colors & clear plastic

933-3663 Rocky Point Lighthouse



**NEW HO Cornerstone Benson's Five & Dime Kit**

September 2015 Delivery • \$34.98 Each

- Great building for any small business
- Fits all popular modeling eras
- Walls & trim molded in 2 realistic colors as one complete part
- LED interior lighting kit included
- Simple snap-together assembly with minimal gluing
- Window mullions molded into "glass" for true-to-scale look
- Full-color printed drapes & window detail sheet
- Molded in 7 realistic colors & clear plastic

933-3661 Benson's Five & Dime



**NEW HO Cornerstone J.C. Landry Feed & Supply Kit**

September 2015 Delivery • \$34.98 Each

- Classic Victorian-era storefront
- Great for city or country scenes
- Fits all popular modeling eras
- Walls & trim molded in 2 realistic colors as one complete part
- LED interior lighting kit included
- Simple snap-together assembly with minimal gluing
- Window mullions molded into "glass" for true-to-scale look
- Full-color printed drapes & window detail sheet
- Molded in 7 realistic colors & clear plastic

933-3662 J.C. Landry Feed & Supply



# Flyer First

**Order Today!**

## SCENEMASTER™

SCENERY, FIGURES, VEHICLES AND MORE !

### NEW HO SceneMaster™ Working Lights

September 2015 Delivery • \$19.98 Each (Unless Noted)

- Common North American-style streetlights used in many communities
- Fit popular modeling eras 1890s to present
- Great detail for day or night scenes

- Fully assembled from tough metal parts
- Install in minutes in new or existing scenery
- Easy to wire with plug & socket or factory-installed leads as appropriate
- Complete installation & hook up instructions



949-4300 Double-Arm Style Boulevard Streetlight  
949-4301 Single-Arm Style Boulevard Streetlight



949-4304 Cast Iron Column Streetlight pkg(2)  
949-4305 Concrete Column Streetlight pkg(2)



949-4309 Modern Streetlight pkg(2)  
949-4310 Single-Arm Streetlight



949-4314 Modern Short Arm Wall Mount Light pkg(3) \$24.98



949-4302 Small Streetlight pkg(2)



949-4306 Station Platform Light pkg(2)



949-4311 Ornate Wall-Mounted Light pkg(3)



949-4315 Modern Long Arm Wall Mount Light \$24.98



949-4303 Bishop's Crook Streetlight



949-4308 Double-Arm Streetlight pkg(2)



949-4307 Wall-Mounted Light pkg(3)



949-4312 Single-Arm Tear Drop Streetlight 21.98



949-4313 Double-Arm Tear Drop Streetlight \$24.98



949-4316 Single Acorn Streetlight \$24.98



949-4317 Double Acorn Streetlight \$24.98

# SCENEMASTER™

SCENERY, FIGURES, VEHICLES AND MORE !

## NEW HO SceneMaster™ Grade Crossing Signals

September 2015 Delivery

- Now with long-lasting LEDs
- Adds animation & realism to model street scenes
- Modern American cantilever-style signals as used in many communities
- Correct scale dimensions
- Install in minutes in new or existing scenery
- Fully assembled, ready to use
- Color-coded hook up wires
- Operate with Crossing Signal Controller (949-4359, sold separately)



949-4330 Modern Two-Lane Cantilever Signal \$44.98



949-4331 Modern Single-Lane Cantilever Signal \$31.98



949-4332 Post 1960s Cantilever Grade Signal \$31.98

## NEW HO SceneMaster Grade Crossing Signal Controller

September 2015 Delivery • \$39.98 Each

- Adds realistic flash to all SceneMaster crossing signals
- Controls up to 4 signals
- Includes 4 optical sensors
- Fully assembled control unit ready to use on DC layouts
- Simple plug-in wiring connections
- Operates on 18 volt AC from power pack accessory terminals
- Complete installation & hook up instructions

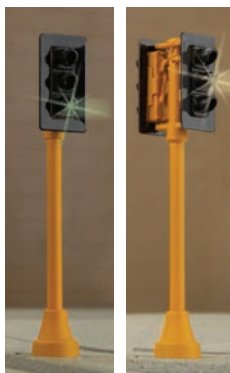


949-4359 Grade Crossing Signal Controller

## NEW HO SceneMaster Traffic Lights

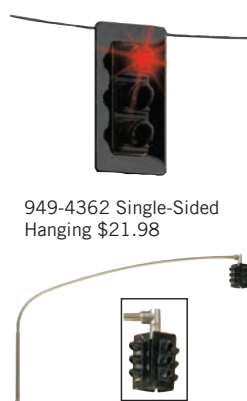
September 2015 Delivery

- Now with long-lasting LEDs
- Makes model street scenes more realistic
- Common North American-style traffic signals as used in many communities
- Fit popular modeling eras
- Great detail for day or night scenes
- Fully assembled from tough metal parts
- Install in minutes in new or existing scenery
- Color-coded wiring
- Operate with Traffic Light Controller (949-4389, sold separately)



949-4360 Single-Sided \$21.98

949-4361 Double-Sided \$24.98



949-4362 Single-Sided Hanging \$21.98

949-4363 Four-Way Hanging \$31.98

## NEW HO SceneMaster Traffic Light Controller

September 2015 Delivery • \$39.98 Each

- Realistic red-yellow-green sequence
- Controls up to 4 signals
- Operates all SceneMaster working traffic lights
- Fully assembled, ready to use
- Simple plug-in wiring connections
- Operates on 18 volt AC from power pack accessory terminals
- Complete installation & hook up instructions



949-4389 Traffic Light Controller



Get the latest news on Walther's products & delivery updates at [walthers.com](http://walthers.com)

## NEW ARRIVALS

Items now in stock at participating hobby shops, or ready to ship from the Walthers warehouse.

### WALTHERSPROTO

#### NEW HO

**WalthersProto® Gunderson Rebuilt All-Purpose 53' Well Car**  
\$39.98 Each

- **Limited edition – one time run of these roadnumbers!**
- First WalthersProto intermodal car
- Prototype conversions in service mid-2000s to present
- Carries containers from 20 to 53'
- Etched metal see-through walkways
- Heavy die cast body for excellent tracking empty or loaded
- Authentic body "weld line" details
- Factory-installed wire grab irons, brake gear & other details
- Ultra-smooth rolling metal axles & 33" wheelsets
- Proto MAX™ metal knuckle couplers



**TTX – Sold out at Walthers**  
920-109001 #469285  
920-109002 #469543



**FEC (Hurricane)**  
920-109003 #70182  
920-109004 #70015



**FEC**  
920-109005 #72392  
920-109006 #72243



**St. Marys Railway West LLC**  
920-109007 #210810  
920-109008 #210281  
920-109000 Undecorated

### WALTHERSPROTO

#### NEW HO

**WalthersProto 40' UTLX Funnel-Flow Tank Car**  
\$44.98 Each

- **Limited edition – one time run of these roadnumbers!**
- Used for food products, chemicals, slurries & more 1960s to present
- Etched metal walkways & platforms
- Factory-installed grab irons
- Brake train pipe & brake rigging underbody detail
- Road-specific placement of manways & safety valves
- Ultra-smooth rolling metal axles & 36" wheelsets
- Proto MAX metal knuckle couplers



**Cyprus**  
920-100129 AMMX #14204  
920-100130 AMMX #14203



**KT Clays**  
920-100131 AMMX #14020  
920-100132 AMMX #14237



**J.M. Huber**  
920-100133 #69011  
920-100134 #69014



**KLRX**  
920-100135 #136108  
920-100136 #136092



**Procor**  
920-100137 #60153  
920-100138 #60156



**Staley**  
920-100139 GATX #4106  
920-100140 GATX #4221

### WALTHERSPROTO

#### NEW HO

**WalthersProto 50' CC&F Bulkhead Flatcar**  
\$34.98 Each

- **Limited edition – one time run of these roadnumbers!**
- Used in lumber service late 1970s to today
- Seen on rails all over North America
- Separately applied ladders
- Factory-installed grab irons
- Heavy die cast frame
- Ultra-smooth rolling metal axles & 33" wheelsets
- Proto MAX metal knuckle couplers

- Detail in seconds with pulpwood load (949-3100, sold separately)



920-104309 Algoma Central #2416



920-104310 BC Rail BCOL #818458



920-104311 CN #603266



920-104312 Ontario Northland #4539

### WALTHERTRAINLINE

**NEW HO WalthersTrainline™ Hopper**  
\$17.98 Each

- Perfect for every HO railroad
- Durable molded-on details
- Realistic paint for good looks
- Body-mounted magnetic knuckle couplers



931-1424 CN



931-1425 CSX



931-1426 IC



931-1427 LV

Build Your Own Wishlist!  
[www.waltthers.com](http://www.waltthers.com)

## WALTHERS NEW PRODUCT CENTER AT WALTHERS.COM

**NEW PRODUCTS ADDED DAILY**

New!

Walthers user-friendly New Products Center is your online source for the latest model railroad releases.

Scan the code here or go to [waltthers.com/newproducts](http://waltthers.com/newproducts) to start browsing today.



\*Union Pacific licensed product

## NEW ARRIVALS

Items now in stock at participating hobby shops, or ready to ship from the Walthers warehouse.

**WALTHERS MAINLINE**

### NEW HO

#### WalthersMainline® 24' Minnesota Taconite Ore Car 4-Pack

\$79.98 Each

- **Limited edition – one time run of these roadnumbers!**
- 12 car numbers available for each roadname, 4 per set
- Correct 5' wheelbase trucks
- Based on cars rebuilt for taconite pellet loading with side extensions
- In service 1960s to present
- Also hauled flux stone & iron ore
- Completely assembled, ready to use
- Die cast underframe for excellent tracking
- Correct 33" turned-metal wheelsets
- Proto MAX™ metal knuckle couplers on end cars; dummy knuckle couplers on intermediate cars



**BN**

910-58051 Set #1  
910-58052 Set #2  
910-58053 Set #3



**DMIR (Thunderbird Mine)**

910-58054 Set #1  
910-58055 Set #2  
910-58056 Set #3



**DMIR**

910-58057 Set #1  
910-58058 Set #2  
910-58059 Set #3



**GN**

910-58060 Set #1  
910-58061 Set #2  
910-58062 Set #3



**Lake Superior & Ishpeming**

910-58063 Set #1  
910-58064 Set #2  
910-58065 Set #3



#### NEW HO Cornerstone Truck Dump Kit \$29.98 Each

- Authentic trackside industry fits most layouts
  - Typical of loaders used 1970s to present
  - Used to move coal, stone & other bulk materials from road to rail
  - Positionable hopper loading conveyor
  - Detailed truck ramp, dump house, conveyors & car puller
  - Easily arranged to fit new or existing scenery
  - Molded in 2 colors
- 933-4058 Truck Dump



#### NEW HO Cornerstone Modernized Double-Track Railroad Truss Bridge Kit

\$39.98 Each

- Updated to clear double-stacks & today's taller cars
- Build your choice of a steam- or modern-era bridge\*
- Common American railroad design
- Use for double- or single-track lines
- Highly detailed parts with simulated rivets
- Safety sign decals
- Molded in dark gray plastic

\* Overhead clearance for models up to 3-1/16" 7.7cm tall.  
933-4510 Modernized Double-Track Truss Bridge



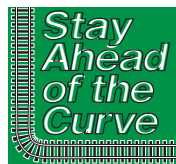
#### NEW HO Cornerstone® DQ Grill & Chill® Kit

\$34.98 Each

- Officially licensed replica
- Contemporary design seen all across North America
- Factory-printed street & structure signs in correct colors
- Drive-up window
- Molded in 4 colors & clear plastic

933-3485 DQ Grill & Chill®

"DQ®, Dairy Queen®, and the ellipse shaped logo, are trademarks owned or licensed by American Dairy Queen Corp. Manufactured under license from American Dairy Queen Corp."



Get the latest news on Walthers products & delivery updates at [walthers.com](http://walthers.com)

# ADVANCE RESERVATIONS

Reserve now for future  
delivery (visit [walthers.com](http://walthers.com)  
for delivery updates).

## WALTHERSMAINLINE

### NEW HO

#### WalthersMainline® EMD SW1

September 2015 Delivery  
Standard DC \$99.98 Each

- **Limited edition – one time run of these roadnumbers!**
- Prototypes in service 1930s thru mid-70s – some still operating today
- Factory-installed 8-pin DCC plug
- Powerful drive mechanism:
  - 14:1 helical-cut gears for quiet operating & easy multiple unit operation
  - 5-pole skew-wound armature motor
  - All-wheel drive & electrical pickup
  - Dual machined brass flywheels
- Directional lighting
- Heavy die cast chassis
- Correct 40" turned metal wheelsets



#### Alaska Railroad

910-9224 #1202  
910-9225 #1203



#### CNW†

910-9226 #1268  
910-9227 #1274



#### MILW

910-9228 #862  
910-9229 #871



#### SP†

910-9230 #1008  
910-9231 #1016



#### WP†

910-9232 #502  
910-9233 #503

## WALTHERSPROTO

### NEW HO

#### WalthersProto® 32' 6" ACF Type 21 10,000-Gallon Tank Car

September 2015 Delivery  
\$41.98 Each

- **Limited edition – one time run of these roadnumbers!**
- 1000s of cars with this common design served North America for 4 decades
- Used to haul gasoline & other petroleum products
- Factory-installed grab irons
- Detailed underbody & brake gear
- 50-ton spring plankless trucks
- Ultra-smooth rolling metal axles & 33" wheelsets
- Proto MAX™ metal knuckle couplers



#### Keith Tank Lines

• K brake gear & details  
920-100521 #791  
920-100522 #799



#### Pan-AM SHPX

• K brake gear & details  
920-100523 #10812  
920-100524 #10818



#### War Department Quartermaster Corps

• AB brake gear & details  
920-100525 USQX  
#10040  
920-100526 USQX  
#10044



#### Union Tank Car Lines

• AB brake gear & details  
920-100527 UTLX  
#10360  
920-100528 UTLX  
#10365

<sup>†</sup>Union Pacific licensed product

## WALTHERSMAINLINE

### NEW HO

#### WalthersMainline 50' Evans

Smoothside Boxcar  
September 2015 Delivery  
\$24.98 Each

- **Limited edition – one time run of these roadnumbers!**
- Thinner stirrups & added door gussets
- In service early 1970s to present
- Perfect for handling all types of general freight
- Correct 33" turned-metal wheelsets



#### Alaska Railroad

910-1911 #10951  
910-1912 #10954



#### ATSF

910-1913 #9210  
910-1914 #9212



#### CR

910-1915 #266826  
910-1916 #266873



#### SP†

910-1917 #659428  
910-1918 #659441



#### UP†

910-1919 #516651  
910-1920 #516659

## WALTHERSMAINLINE

### NEW HO

#### WalthersMainline 50' 100-Ton 4-Bay Hopper

December 2015 Delivery  
\$27.98 Each

- **Limited edition – one time run of these roadnumbers!**
- New die cast underframe
- New sloped sheet braces
- New updated brake gear
- Realistic profile grab irons & thin stirrups
- Used to haul coal all across US
- In service mid-1960s to mid-2000s
- Correct 36" turned-metal wheelsets



#### BN

910-1951 #549018  
910-1952 #513915



#### CNW†

910-1953 #63126  
910-1954 #63153



#### CR

910-1955 #498764  
910-1956 #498679



#### DRGW†

910-1957 #16638  
910-1958 #16662



#### MP†

910-1959 #588264  
910-1960 #588457



#### NS

910-1961 #300347  
910-1962 #300352

## WALTHERS NEW PRODUCT CENTER AT WALTHERS.COM

**NEW  
PRODUCTS  
ADDED  
DAILY**

**New!**

Walthers user-friendly  
New Products Center  
is your online source  
for the latest model  
railroad releases.

Scan the code here or go to  
[walthers.com/newproducts](http://walthers.com/newproducts)  
to start browsing today.



# ADVANCE RESERVATIONS

Reserve now for future  
delivery (visit [walthers.com](http://walthers.com)  
for delivery updates).

## WALTHERSMAINLINE

### NEW HO

#### WalthersMainline® 50' ACF Exterior- Post Boxcar

September 2015 Delivery  
\$24.98 Each

#### • Limited edition – one time run of these roadnumbers!

- Prototypes seen coast-to-coast 1974 to present
- Handles all types of general freight loading
- Used by Railbox & dozens of other railroads
- Correct Plate B dimensions:
  - \* 41' 3" truck centers
  - \* 15' 2" tall
  - \* 10' 8" wide
- Fully assembled, railroad ready
- Correct 33" turned-metal wheelsets



#### B&M

910-2113 #3212  
910-2114 #3295



#### BN

910-2115 #249139  
910-2116 #249197



#### Ashley, Drew & Northern

910-2117 #8083  
910-2118 #8146



#### SP†

910-2119 #12894  
910-2120 #13261



#### Railbox

910-2121 #10152  
910-2122 #10437

\*Union Pacific licensed product

## WALTHERSMAINLINE

### NEW HO

#### WalthersMainline

#### 40' AAR 1948 Boxcar

December 2015 Delivery  
\$24.98 Each

#### • Limited edition – one time run of these roadnumbers!

- 1000s used in general freight service 1948 to 1980s
- 2 different car numbers available per roadname
- 10-panel riveted sides
- 6' Youngstown doors
- 10'6" interior height
- Diagonal panel roof
- Improved Dreadnaught 4-4 end with rectangular top rib
- See-through Apex steel running board
- Ajax hand brake wheel
- Bettendorf trucks
- Correct 33" turned-metal wheelsets



#### ATSF (Shock Control)

910-1751 #1694  
910-1752 #16940



#### Bangor & Aroostook (State of Maine)

910-1753 #5067  
910-1754 #5070



#### CP (Boxcar Red, Script Lettering)

910-1755 #259500  
910-1756 #259520



#### IC (Mainline of Mid-America)

910-1757 #31049  
910-1758 #31187



#### PRR (Shadow Keystone Logo)

910-1759 #85402  
910-1760 #85420



#### Toronto, Hamilton & Buffalo

910-1761 #3079  
910-1762 #3211

#### Undecorated

910-1750 Kit

## WALTHERSMAINLINE

### NEW HO WalthersMainline

#### 53' GSC Piggyback Service Flatcar

December 2015 Delivery • \$27.98 Each

#### • Limited edition – one time run of these roadnumbers!

- Used for piggyback service 1955-80s
- Carried 32, 35 & 40' trailers – detail in seconds with Walthers SceneMaster™ trailers
- Factory-installed trailer hitch, rub rails & bridge plates
- Detailed body & deck
- Hidden weight for great looks & performance
- Correct 33" turned-metal wheelsets



#### CNW†

910-5113 #44007 910-5114 #44443



#### GN

910-5115 #60203 910-5116 #60224



#### NH

910-5117 #17316 910-5118 #17373



#### SP†

910-5119 #142765 910-5120 #143202



#### TTX (brown)

910-5121 #475104 910-5122 #475253



#### TTX (yellow)

910-5123 #475128 910-5124 #475265

Undecorated 910-5100 Kit

### A Note on Availability

At Walthers, we strive to provide you with the widest variety of product possible. In order to achieve this goal, we maintain significant inventory on site. Despite our best efforts to have every item you could possibly need in house at all times, it is not realistically possible to do so. For your convenience, we do our best to promote items that are in stock and to clearly label other items—those that are new and available for Advance Reservations or items that are low in stock and have Limited Quantities Available when the Flyer goes to press. At times, we experience a quick sell out on a particular item or unexpected demand for an item that we believed to have sufficient stock in house. In many cases, items can be back ordered for future delivery. In other cases, we are unable to secure more of a particular item. For the most up to date availability information, we encourage you to check [walthers.com](http://walthers.com), email us at [custserv@walthers.com](mailto:custserv@walthers.com) or call our Customer Service Team at 1-800-4-TRAINS. The 'Find It' feature on our website will help you find a Dealer in your area that may still have stock available for the item you desire.

Please know that we appreciate your support of both Walthers and your Local Hobby Shop. We are committed to making this Flyer a valuable part of your model railroading.

## EASY-TO-USE TRACK TOOL AT WALTHERS.COM



Scan the code here or  
go to [walthers.com/track](http://walthers.com/track)  
and get started today.



# LABOR DAY BRINGS BEGINNINGS -

school starts for the kids and model railroaders head back to their layouts. It's the time to put to use all those modeling ideas gained from vacation train trips, summer visits to the train museum or railfanning excursions. As you get back to modeling, gather the right tools and supplies to turn your inspiration into great things on your layout or diorama. Start with the products shown here and find more at [walthers.com](http://walthers.com).



**Solvaset Decal Setting Solvent**  
Walther's®.  
904-470 2oz 59.1mL  
Bottle  
Reg. Price: \$5.98 Sale: **\$4.98**



**NEW 1/48 Texture Decal Set**  
Microscale.  
460-AC480042 Various  
Aircraft Rivets  
Reg. Price: \$8.00 Sale: **\$6.98**



**Painting Handle/Work Holder**  
GB Engineering.  
298-600  
Reg. Price: \$11.60 Sale: **\$9.98**



**Roto Wheel Cleaner™ - Tidy Track™**  
Woodland Scenics. With replacement pads.  
785-4560 N Scale  
Reg. Price: \$24.99 Sale: **\$19.98**  
785-4561 HO Scale  
Reg. Price: \$29.99 Sale: **\$23.98**



**Roto Wheel Cleaner Replacement Roto Pads™ - Tidy Track**  
Woodland Scenics.  
785-4562 For HO & N Cleaners  
Reg. Price: \$7.99 Sale: **\$5.98**



**Bright Boy Abrasive Track Cleaner**  
Walther's SceneMaster™.  
949-521 Standard Grit  
Reg. Price: \$8.98 Sale: **\$7.98**



**Cratex Abrasive Block Extra Fine**  
Walther's SceneMaster.  
949-522 3 x 1 x 1/4"  
7.6 x 2.5 x .6cm  
Reg. Price: \$9.98 Sale: **\$8.98**



**GOO®**  
Walther's.  
904-299 1oz 29.1mL  
Tube  
Reg. Price: \$4.49 Sale: **\$3.98**



**Expert Laser Glue**  
Fallers.  
272-170494 Multi-Purpose - 7/8oz 25g  
Reg. Price: \$6.99 Sale: **\$5.98**



**Plastic Weld Plastic Solvent Cement**  
Plastruc.  
570-2 2oz 59.1mL  
Reg. Price: \$5.05 Sale: **\$3.98**



**Foam Tack Glue™ - SubTerrain System**  
Woodland Scenics.  
785-1444 12oz 355mL  
Reg. Price: \$12.99 Sale: **\$9.98**



**Colored Weathering Powders**  
A I M.  
110-3100 1oz 28.3g  
Each pkg(8)  
Reg. Price: \$43.95 Sale: **\$37.98**



**H Series Airbrush Set**  
Paasche. Small spray pattern, single action airbrush, color cup, and bottle assemblies, color adjusting parts, hanger, wrenches and air hose.  
542-31  
Reg. Price: \$95.00 Sale: **\$71.98**



**Hobby Shop Spray Booth**  
Paasche. Vents paint and fumes. Exhaust should be vent outside. 80 to 100 LFM air movement.  
542-10000  
Reg. Price: \$365.00  
Sale: **\$328.98**



**HO Foam Cradle**  
Bowser.  
6-22 Locomotive and/or Rolling Stock Work Holder  
Reg. Price: \$15.95 Sale: **\$13.98**



**HO Display/Test Stand Rollers - E-Z Riders™**  
Bachmann. Make sure your fleet is running smoothly with these handy ball-bearing rollers.  
160-42901 Rolling w/Ball Bearings for Powered Axles pkg(4)  
Reg. Price: \$83.00 Sale: **\$56.98**

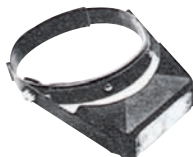


**Rail Tracker™ Cleaning Kit - Tidy Track**  
Woodland Scenics.  
Includes two Rescue Pads, two Maintenance Pads, four each Cleaning and Finishing Pads, Clean Track solution, Rail Tracker and Extension Handle.  
785-4550  
Reg. Price: \$34.99 Sale: **\$27.98**



**HO Pre-Blackened Brass Chain - 12" 30.5cm**  
A Line.  
116-29220 27 Links Per Inch  
Reg. Price: \$4.95 Sale: **\$3.98**

**Fast Check-Out Options**  
at [www.walthers.com/](http://www.walthers.com/)!



**Optivisor**  
Donegan Optical.  
Precision-made binocular magnifier worn on the head leaves both hands free. Can be worn over regular prescription or safety glasses.  
240-404 2x, 10" Focal Length  
Reg. Price: \$59.10 Sale: **\$50.98**



**OptiSIGHT Magnifying Visor**  
Donegan Optical.  
240-600 With #3, #4 and #5 Lens Plates  
Reg. Price: \$34.99 Sale: **\$29.98**

**SO MANY PRODUCTS  
SO LITTLE SPACE!**  
**FIND MORE ONLINE NOW!**  
1. Go to [walthers.com/flyer](http://walthers.com/flyer)  
2. Click **Read Online Now**  
3. Click **Featured Online Products**



**8-Piece Technician's Mini-Plier Set - UltraTech™**  
General Hardware.  
285-938 Includes Case  
Reg. Price: \$41.98 Sale: **\$35.98**



**Aspire Pro Air Compressor**  
Badger Air Brush.  
Durable and ideal for high frequency use. Maintenance-free model requires no lubrication and features one-gallon storage tank, on/off toggle switch, auto shutoff, two airbrush holders and durable metal casing with sturdy handle.  
165-TC910  
Reg. Price: \$340.00  
Sale: **\$257.98**



**Tweezer Set**  
Zona. A selection of five quality tweezers for handling small objects. Includes one each of fine point, flat blade, slide lock curve point and cross-locking tweezers.  
795-37540 5 Pieces  
Reg. Price: \$24.40 Sale: **\$18.98**



**Track Cutter**  
Xuron.  
791-90028 For HO, N & Z Rail  
Reg. Price: \$17.75 Sale: **\$13.98**



**Ultra Flush Cutting Shears**  
Xuron.  
791-90036  
Reg. Price: \$14.25 Sale: **\$10.98**



**Earth Color Kit**  
Woodland Scenics. Includes instructions, applicator, palette and eight 1 oz bottles of Earth Color Liquid Pigment. One each: White, Concrete, Stone Gray, Slate Gray, Raw Umber, Burnt Umber & Yellow Ochre.  
785-1215 pkg(8)  
Reg. Price: \$19.99 Sale: **\$15.98**

**Crafter's Hot Knife w/Pro Power Supply & Sled Guide**  
TL Marshall. Score and cut a wide variety of foam, carve delicate lines, create design hot spots and cut large areas with ease. Heavy-duty stainless steel blade heats evenly under your control.  
715-6 Foam Cutter 6" 15.2cm  
Reg. Price: \$79.95 Sale: **\$71.98**  
715-9 Foam Cutter 9" 22.9cm  
Reg. Price: \$99.95 Sale: **\$89.98**

**Build Your Own Wishlist!**  
[www.walthers.com](http://www.walthers.com)



**Aspire Air Compressor**  
Badger Air Brush. Airbrush trigger activate start/stop, hidden handle, air regulator, gauge and moisture trap, on/off toggle switch, hose connection and adaptor.  
165-TC908  
Reg. Price: \$281.00 Sale: **\$213.98**

**WALTHERSPROTO** MAKING RAILROAD HISTORY PRESENTS  
OUR LATEST HO SCALE NAME TRAIN...

# The New 1960's BROADWAY LIMITED

PRIDE OF THE BLUE RIBBON FLEET



Pride of the Pennsylvania, the *Broadway Limited* was truly America's finest long-distance train of the 1960s, racing between New York and Chicago on red-hot 16-hour schedules, and serving a clientele accustomed to the very best. With an authentic consist of nine newly deskirted cars built to Walther'sProto standards, our newest HO Scale name train also introduces a new Baggage-Mail car, rebuilt *Harbor* series sleeper-lounge, the later *View* series observation with large tail sign, and matching EP-22 diesel power.



## Pennsylvania Class EP-22 (EMD E8A) Passenger Diesels

Run in A-A-A sets, these superb replicas are perfect power for your 1960s Broadway, based on Class EP-22 Units from 1959 on featuring:

- Single stripe scheme with 18" name, serif lettering and keystone logo
- Nose-mounted grab irons
- New brass Leslie S3J air horn
- Train phone antenna
- Deskirted fuel tanks
- MU equipment
- May 2016 delivery for all models
- Limited edition – one-time run of these engine numbers

## SoundTraxx® Tsunami® Sound & DCC

A-A Sets \$598.98 Each  
920-42350 #5703A, #5716A  
920-42351 #5801A, #5806A

A Units \$329.98 Each  
920-42352 #5711A  
920-42353 #5793A

## Standard DC

A-A Sets \$399.98 Each  
920-49350 #5703A, #5716A  
920-49351 #5801A, #5806A

A Units \$229.98 Each  
920-49352 #5711A  
920-49353 #5793A

## First Car Arriving Now - Reserve Now!

- Newly deskirted cars as assigned from 1960 onward
- New baggage-mail, *Harbor* & *View* series cars
- Complete nine-car consist - easy to mix & match with our earlier Broadway cars
- Modeler-installed extended drawbar for operation on 22" radius curves

## 70' PRR BM70n Railway Post Office- Baggage



920-9240 March 2016 \$74.98

## 85' Budd "Inn" Series 21-Roomette Sleeper



920-9241 September 2015 \$69.98

## 85' P-S "Creek" Series 12 Duplex 4 BR Sleeper



920-9242 October 2015 \$74.98

## 85' ACF "Imperial" Series 4-4-2 Sleeper



920-9243 December 2015 \$69.98

## 85' P S "Harbor" Series 5 BR Lounge



920-9244 April 2016 \$69.98

## 85' Budd 68-Seat Full Diner



920-9245 January 2016 \$69.98

## 85' Budd Kitchen-Dormitory



920-9246 February 2016 \$69.98

## 85' P-S "Rapids" Series 10-6 Sleeper



920-9247 November 2015 \$69.98

## 85' P-S "View" Series 2 MB, 1 BR-Buffer-Lounge-Obs



920-9248 March 2016 \$79.98

**WALTHERS**

Photos show preproduction models for illustration purposes only, some colors and details may vary.



**WALTHERS®**

# GIANT WAREHOUSE SALE!

***SAVE BIG!***

**1000s OF ITEMS  
ON SALE NOW**

**SHOP ALL THESE  
GREAT SALES AT  
[WALTHERS.COM/  
WAREHOUSE](http://WALTHERS.COM/WAREHOUSE)**

## **Walthers Yard Sale**

Great prices on select limited-run Walthers locomotives & rolling stock.

## **Great Deals On Wheels Sale**

Big savings on vehicles to enhance your railroad or expand your collection.

## **Märklin Markdown Sale**

Huge savings on Märklin & Trix, some of the world's finest trains.

## **Super Last Chance Sale**

Selected items from all over our warehouse at rock-bottom prices.



# HO SCALE | TRAIN SETS



## HO Overland Limited Train Set

Bachmann. A Union Pacific 4-8-4 steam locomotive with operating smoke and headlight leads 8 freight cars and a caboose around a 65 x 38" E-Z Track® oval. 160-614 UP

Reg. Price: \$379.00 Sale: **\$258.98**



## HO Ringmaster Circus Train Set

Bachmann. Command attention with this colorful set featuring a steam loco with tender, 3 circus cars and a caboose plus 47 x 38" E-Z Track oval and power pack.

160-714 Ringling Bros. and Barnum & Bailey™

Reg. Price: \$265.00 Sale: **\$180.98**



## HO ICE Battery Operated Starter Set w/Plastic Track - My World

Märklin. This battery powered 5-part train set is ready for hours of fun.

Included is an easy-to-use infrared controller plus a sturdy plastic track layout and batteries.

441-29300 German Railroad DB AG ICE

Reg. Price: \$69.99 Sale: **\$62.98**



## HO Rail Chief Train Set

Bachmann. Command the rails with this set that includes miniature people, a signal bridge, GP40 diesel engine, 3 freight cars and a caboose. It runs around a 47 x 38" E-Z Track oval.

160-706 BN & Santa Fe

Reg. Price: \$209.00 Sale: **\$142.98**

# HO SCALE | LOCOMOTIVES



## Limited Quantity Available

### NEW HO EMD F7A - Tsunami® Sound & DCC

WalthersProto®. Features road-specific detailing, 14:1 helical gears, 5-pole skew-wound motor, machined brass flywheels, directional LED lights and more.

GN (Original Scheme; Omaha Orange, green, yellow)

920-40703 #364C

920-40704 #367C

GN (Simplified Scheme; Omaha Orange, green)

920-40707 #363C

920-40708 #364C

Price: \$269.98



## Limited Quantity Available

### NEW HO EMD F7A - Standard DC

WalthersProto. Features road-specific detailing, 14:1 helical gears, 5-pole skew-wound high-torque can motor, machined brass flywheels and LED constant and directional headlights.

GN (Original Scheme; Omaha Orange, green, yellow)

920-47703 #364C

920-47704 #367C

GN (Simplified Scheme; Omaha Orange, green)

920-47707 #365C

920-47708 #367C

Price: \$169.98



## Limited Quantity Available

### NEW HO EMD F7A-B Set - Tsunami® Sound & DCC

WalthersProto. Equipped with 14:1 helical gears, 5-pole skew-wound high-efficiency can motor, machined brass flywheels and LED constant and directional headlights.

GN (Simplified Scheme; Omaha Orange, green)

920-40705 #363A, 365B

920-40706 #364A, 364B

Price: \$529.98



## Limited Quantity Available

### NEW HO EMD F7A-B Set - Standard DC

WalthersProto. Equipped with 14:1 helical gears, 5-pole skew-wound motor, machined brass flywheels, LED directional headlights and working Mars light.

GN (Original Scheme; Omaha Orange, green, yellow)

920-47701 #364A, 364B

920-47702 #368C, 372B

GN (Simplified Scheme; Omaha Orange, green)

920-47705 #368C, 371B

920-47706 #370A, 372B

Price: \$329.98

## SO MANY PRODUCTS SO LITTLE SPACE!

### FIND MORE ONLINE NOW

1. Go to [walthers.com/flyer](http://walthers.com/flyer)
2. Click Read Online Now
3. Click Featured Online Products

*Sale products listed in this Flyer were either in stock or expected to be at press time. Because of increased demand for sale-priced items and limited quantities available, some may be out of stock following the printing of this catalog. We reserve the right to correct errors, change prices and modify designs without notice and without obligation to previous purchasers. All rights reserved.*

*Prices and delivery dates of newly announced items shown were accurate at press time, for updates, visit [walthers.com](http://walthers.com).*

©2015 Wm. K. Walthers, Inc. All prices are listed in U.S. dollars. Prices subject to change without notice.

Photos and/or listings of products depicting political or religious themes do not constitute an endorsement by Wm. K. Walthers, Inc.

Select products are not shippable to California.

CSX proprietary marks used by permission of CSX Transportation, Inc.

Accumate® couplers are made under license from Accurail, Inc.

The BNSF Railway, Burlington Northern, Burlington Route, Colorado and Southern, Denver Road, Frisco, Great Northern Railway, Northern Pacific Railway, Santa Fe, Spokane Portland and Seattle Ry., and Burlington Northern Santa Fe Railway marks are licensed marks owned by BNSF Railway Company.

Products bearing American Refrigerator Transit Company, ART, Chicago & North Western Railway, Chicago & North Western System, Chicago & North Western, CNW, C&NW, Denver & Rio Grande Western, DRGW, D&RG, D&RGW, Rio Grande, Katy Railroad, The Katy, Missouri-Kansas-Texas, MKT, M-K-T, Missouri Pacific Lines, Missouri Pacific, Mo-Pac, MP, Pacific Fruit Express Company, Pacific Fruit Express, PFE, Southern Pacific Rail Corporation, Southern Pacific Lines, Southern Pacific, SP, St. Louis Southwestern, SSW, Cotton Belt, Cotton Belt Route, Texas & Pacific, T&P, TP, Union Pacific Railroad Company, Union Pacific Railroad, Union Pacific, UP, Union Pacific Fruit Express, UPFE, Western Pacific & WP marks are made under trademark license from Union Pacific Railroad Company.

\*Union Pacific licensed product