



# Executive Master In Finance

Preparing Financial Leaders



The Business School  
for the World®

## Multiple Perspectives

### A Typical EMFin Class

35

Participants

34yrs

Average age

17

Nationalities

25%

Women

10yrs

Average work experience



### Main Industry Sectors:

Banking	22%
Corporate Sector	20%
Financial Services	17%
Investment Management	13%
Investment Banking	8%
Private Equity/Venture Capital	6%
Consulting	3%
Real Estate	3%
Capital Markets	3%
Technology, Media & Telecom	3%
Insurance	2%

## The INSEAD EMFin Advantage

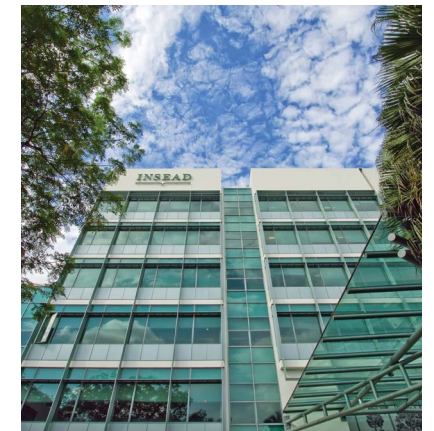
For more than half a century, INSEAD has been developing ambitious finance professionals with a unique global perspective. Our goal is to prepare the next generation of leaders that will drive the finance industry into the future. There is a myriad of reasons why the INSEAD Executive Master in Finance (EMFin) stands out from the rest:

### Beyond Diversity

Each class has an unparalleled diversity of nationalities and business backgrounds. In an EMFin classroom environment, you will maximise your learning by challenging your assumptions and broadening your perspectives.

### Real-time Transformation

The EMFin programme offers a convenient schedule that allows you to study while you work. The modular format enables you to make an immediate impact at your job.



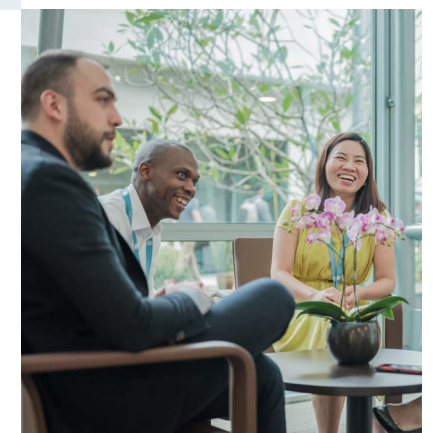
### Global Community

The bonds fostered with one another during the programme often translate to lifelong friendships and business opportunities. You will join the INSEAD family of over 61,000 influential alumni in more than 175 countries.



### World-class Faculty & Research

With a combination of experience and talent, our faculty creates top-notch programmes and cutting-edge research that influences businesses around the world.



### From Aspirations to Reality

Be it career advancement or a new business venture, INSEAD offers you a customised approach for your professional development.

### Financial Leadership

The Leadership Capstone Module enables you to connect all your learning at INSEAD to your current business practice from a management and leadership perspective.



## Meet the Faculty



**"The programme is designed such that our faculty can bring their expertise from dealing with companies and solving business problems into the classroom. This means it's not only lecturing, but also discussing real-life scenarios and how to develop leadership in the finance space."**

### Massimo Massa

*Programme Director,  
Professor of Finance*



**"The knowledge and skills that participants glean from the programme must be relevant and applicable in the real world. Therefore, the EMFin classroom experience goes beyond lecturing to include case studies, practice theories, group work and lively discussions amongst participants from varying functions across the finance industry."**

### Pierre Hillion

*Professor of Finance*



**"A major strength of the EMFin is the capstone project. Over the final four to five months of the programme, participants apply the knowledge they have acquired to an issue or situation that is directly relevant to them, their companies and/or their careers."**

### Lucie Tepla

*Affiliate Professor of Finance*



**"The diversity of our EMFin participants, who all have experience in finance, come from gender, nationalities and industries. This diversity proves fruitful not only in sharing experiences but also when working in groups with the ALCO simulation at the end of the programme."**

### Jean Dermine

*Professor of Banking and Finance*

## A Strategic Perspective on Finance

The INSEAD EMFin allows you to acquire an advanced finance and management education at one of the world's best business schools while making an immediate impact in your organisation. It takes place on our campuses in Asia (five modules) and Europe (one module), giving you the opportunity to experience two very different business environments.

Each cohort consists of experienced finance executives from diverse cultural and professional backgrounds which means you will learn from each other, as well as from INSEAD's world-leading finance faculty. Uniquely, the programme also equips you with essential leadership and management skills, setting finance in a strategic and global context – and preparing you for a senior role. Throughout the programme, the concept of leadership comes to the fore and is further developed in a final capstone module.

Programme Length	18 months
Modules	6
On-Campus Classes	12 weeks
Independent Study	17 weeks*

Structure	Month	Duration	Campus
Module 1 – Core Courses	September 2021	2 weeks	Asia
Module 2 – Core Courses	January/February 2022	2 weeks	Asia
Module 3 – Concentration: Financial Markets	April 2022	2 weeks	Asia
Module 4 – Electives	July 2022	2 weeks	Europe
Module 5 – Concentration: Corporate Finance	November 2022	2 weeks	Asia
Module 6 – Leadership Capstone	February 2023	2 weeks	Asia

\* In addition to the 12 weeks spent on campus, there is significant work to be completed between modules, equating to approximately 17 weeks of learning.

# Real-time Transformation

The EMFin blends cutting-edge theory and best practice. The curriculum offers an absolute focus on the financial industry with a rigorous understanding of the key competitive and management issues in this sector.

## Core Courses

### Finance

Finance is at the heart of the academic content. The courses cover a comprehensive range of topics and frameworks that you can apply to complex financial transactions.

Sample Topics:

- Capital Markets
- Corporate Finance
- Dividend Policy
- Equity & Debt as Derivatives
- Initial Public Offerings
- Interest Rate Risk
- Leveraged Buyouts & Private Equity
- Mergers & Acquisitions
- Options
- Portfolio Theory

### Accounting

The principles and applications of accounting used as part of financial analysis are important elements in this programme. These skills and insights are a foundation for account valuation and entity accounting.

Sample Topics:

- Introduction to Financial Statements
- Investments
- Long-term Debt/Bonds
- Revenue Recognition
- Shareholders' Equity
- Statement of Cash Flow Analysis

### Modelling

Developed and presented from a practical perspective, this course provides a foundation in probability and statistics for your managerial career.

Sample Topics:

- Understanding Relationships from Data
- Making Predictions Based on Data

## Concentrations

The third and fifth modules of the programme give you the opportunity to focus on Corporate Finance and Financial Markets. These concentrations provide you with a well-rounded perspective on both pillars of the finance world.

### Corporate Finance Concentration Courses:

- Advanced Corporate Finance
- International Corporate Finance
- Project Finance
- Private Equity – Venture, Minority & Buyout Investing

### Financial Markets Concentration Courses:

- Advanced Asset Management
- Asset and Liability Management in Banking
- Equity Investment
- Sustainable Finance

## Executive Elective Courses

The programme offers a portfolio of electives that evolve with the changing priorities and needs of the financial industry. This module is shared with participants of INSEAD's Executive MBA to give you the opportunity to network and learn with a broader group of professionals from diverse industries and backgrounds.

### Sample Elective Courses:

- AI and FinTech
- Behavioural Finance
- Management Decision Making
- Negotiations

## Leadership Capstone Module

The INSEAD EMFin has a distinctive concluding module that ties together all of the topics covered in the programme, including a management and leadership twist. The sessions make the final link between your current business practices, your learning at INSEAD and your future career success.

### Capstone Courses:

- ALCO Simulation
- Fair Process Leadership & Governance
- Global Banking and Finance: Structure, Conduct & Performance
- Leadership in Finance

### Capstone Project

The capstone project is an opportunity to deepen and apply your knowledge to an issue or situation of real business impact. It will lead to actionable insights and recommendations that your organisation can implement.



## Nurturing Your Career Development

All of our EMFin students are already set on a career trajectory in a finance-related role. It is all about you - whether you are looking for career advancement or exploring opportunities for career progression outside of your current organisation, our Career Development for Working Professionals team partners with you to guide and support you throughout your journey. You can come talk to us during the programme about your career plan and we will provide you with customised resources, coaching and experiences that can meet your career goals.

We offer a wide range of services from individual career coaching sessions, to on-campus workshops and online webinars. Throughout your programme, you will have several opportunities to develop your skills in career planning, CV writing, interviewing techniques, networking and negotiation skills, and many more.

Additionally, whether through the INSEAD career platform, the alumni directory, or through guided individual outreach, there will be various opportunities for gaining market insights and developing strong networks throughout and beyond your programme.

# The INSEAD Ecosystem

## INSEAD Launchpad

An alumni startup accelerator located inside STATION F in Paris. Alumni start-ups are able to:

- Receive advice and funding
- Receive support to scale and extend their reach
- Join STATION F events to hear successful entrepreneurs share insights



## ENTREPRENEURIAL SPIRIT

## 18 Centres & Initiatives

INSEAD conducts research and provides insights that shape management practice.

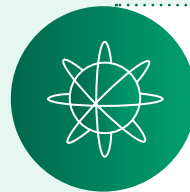
- The Hoffmann Global Institute for Business & Society
- The Rudolf and Valeria Maag INSEAD Centre for Entrepreneurship
- The Gender Initiative
- The Blue Ocean Strategy Institute



## CLOSENESS TO BUSINESS

## Alliances & Partnerships

- CEIBS
- INSEAD-Wharton Alliance
- Kellogg
- Sorbonne University
- Tsinghua University
- Yale's Global Network for Advanced Management



## INDEPENDENCE

## Globally Connected Alumni Network

- Over 61,000 alumni of more than 160 nationalities across 175 countries

## DIVERSITY



## Enriching Student Life

- Launch/National Weeks
- Over 40 Student Clubs
- Student-led Conferences
- INSEAD Partners Community

## World-class Faculty:

- Over 140 world-leading experts from more than 30 countries
- Scholars and practitioners who conduct research that push the frontiers of business knowledge
- Frequently named on the prestigious Thinkers50 list

“Without action, the world would still be an idea.”

**Georges Doriot**  
*INSEAD Founder*

## RIGOUR AND RELEVANCE



## Award-winning Research and Cases

- More than 100 business schools and universities worldwide use INSEAD cases
- INSEAD professors have written six of the 10 best-selling cases distributed by The Case Centre in the last 40 years

Find out more:

<https://publishing.insead.edu/>



# Your Journey Starts Here

Hailing from a remarkably wide range of backgrounds and experiences, successful INSEAD EMFin candidates are distinguished by demonstrated quantitative skills, academic excellence, strong interpersonal skills and the potential to succeed as a leader in a competitive, global business environment.

Our admissions process is designed to ensure the best possible fit between you and the INSEAD EMFin programme. Throughout the process, we will be looking for qualities that we know make up the best participants.

## Admissions Criteria



### ACADEMIC CAPACITY

Bachelor's degree or equivalent from a recognised college or university.



### GMAT, GRE or GMAC® EA

You can apply with the GMAT, GRE or GMAC® Executive Assessment (EA).



### PROFESSIONAL EXPERIENCE

We welcome applicants with a range of four to 12 years of experience in a finance-related role. Applicants with less experience who demonstrate strong quantitative skills and exceptional maturity through their professional and personal experiences may also be considered.

## Application Rounds

### September 2021 intake (Class of 2023)

Round	Sep 2021 intake
1	01 Nov 2020
2	01 Feb 2021
3	01 May 2021
Final	01 Jul 2021

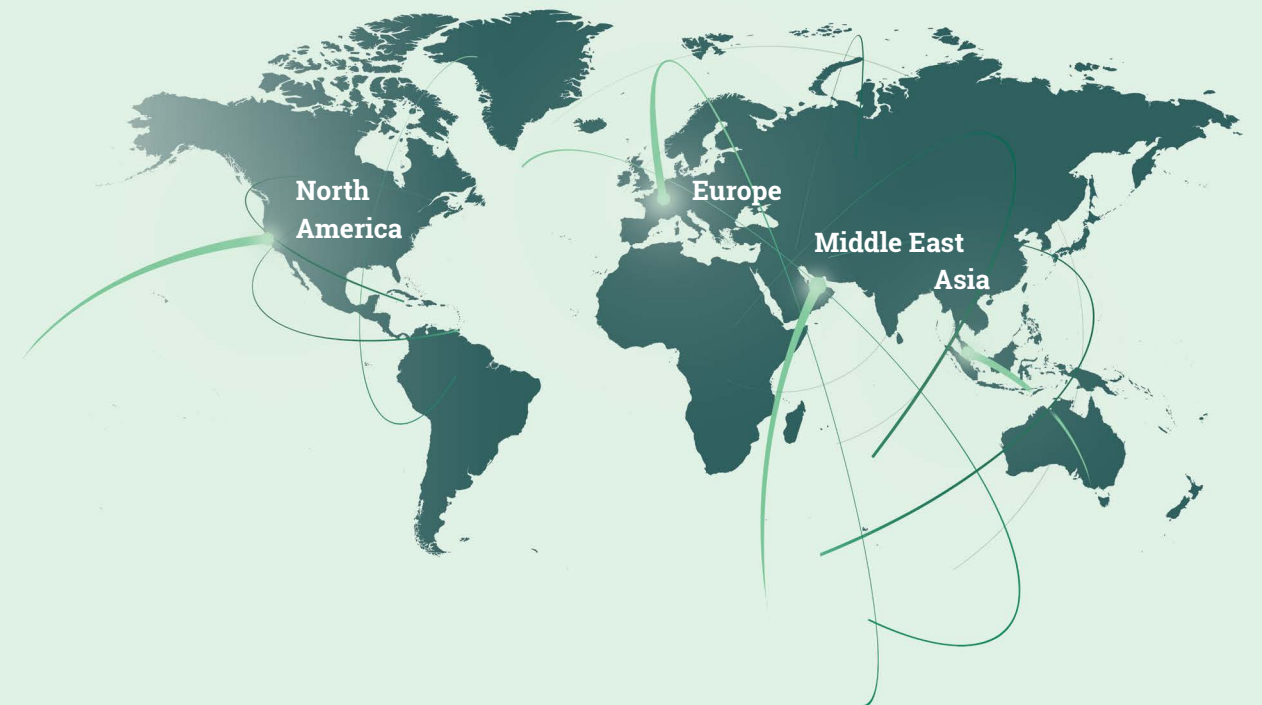
## Connect with Us

Email Us: [emfin.info@insead.edu](mailto:emfin.info@insead.edu)

Visit Us Online: [insead.edu/emfin](https://insead.edu/emfin)

## Our Mission

We bring together people, cultures and ideas to develop responsible leaders who transform business and society.



INSEAD does not discriminate on the basis of race, gender, religion, national or ethnic origin, age, sexual orientation, or infirmity.  
INSEAD | Registration Number 199901016K | CPE Registration 21 June 2017 to 20 June 2023

## INSEAD Europe Campus

Boulevard de Constance  
77305 Fontainebleau Cedex, France  
T +33 (0)1 60 72 40 00

## INSEAD Asia Campus

1 Ayer Rajah Avenue  
Singapore 138676  
T +65 6407 7160

## INSEAD Middle East Campus

Al Khatem Tower, Al Maryah Island  
ADGM Square  
P.O. Box 48049  
Abu Dhabi - UAE  
T +971 2 651 5200

## INSEAD San Francisco Hub for Business Innovation

224 Townsend Street  
San Francisco, CA 94107, USA  
T +1 888 546 7323

[insead.edu/emfin](https://insead.edu/emfin)

