

## Active Shooter Full Scale Exercise – Safety Plan

Tuesday, July 25th, 2017, 9AM to 1PM Coates Bldg, Jones Bldg, Jones Lot, Crabbe St, and Crabbe St Lot

1) No weapons are permitted inside the exercise area. This includes no firearms, no ammunition, no tasers, no knives, no batons/clubs, and no chemicals. (Note – Responding Police will only carry Inert [simulated] Firearms). All responders must go through a safety check point, where they will be searched prior to entering the exercise area, to make sure that no live weapons are introduced into the exercise environment. The Mock Shooter will be equipped with a rifle, adapted to fire blanks, to provide sound stimulus (Sounds of Gunfire) during the exercise. The Mock Shooter and rifle will be checked to make sure that no live ammunition is carried into the exercise area. The Controller/Safety Officer assigned to the Mock Shooter will maintain constant surveillance of the Shooter, and their immediate area, to ensure their safety from outside threats, and to make sure that the blank adaptor is maintained in proper position at all times.

2) For Exercise Purposes, and for your safety and the safety of others, volunteers for the Active Shooter Exercise on July 25th, shall not attempt to fight an attacker during the exercise. The available response options, for volunteers during this exercise, are Evacuate or Run (or) Hide Out or Hide, with NO Take Action (or) Fight being appropriate for the exercise. The Mock Shooter shall not point their blank firing rifle, in the direction of any person, while firing blanks for sound stimulus. Blanks will only be fired in a safe direction.

3) Any communication that volunteers have with anyone outside of the immediate exercise area shall be preceded with the words “Exercise” “Exercise”. (Note – This is meant for non-face-to-face communication with individuals or groups outside the exercise area [e.g. When making 9-1-1 calls]. Any person within the exercise area is presumed to know that this event is an exercise)

4) If an actual emergency exists, or a dangerous situation is observed, and exercise play must be stopped, the commands “Wash Out” or “Real World” shall be used to stop exercise play. Any person may order a stop of the exercise if they become aware of an emergency condition or dangerous situation in the exercise area.

5) The overall exercise area includes: Coates Building, Jones Building, Jones Lot, Crabbe Street Lot, Foster Building, Campbell Building, Burrier Building, Roark Building, Memorial Science Building, Moore Building, Cammack Building, Blanton House, and the Ravine.

6) Weather Safety:

The ECU Director of Emergency Management and Security, in consultation with the personnel and/or resources at the National Weather Service, will monitor weather before and during this event.

Concerns that may halt, postpone, or cancel this event include the following:

- A) A Severe Thunderstorm Warning in Madison County,
- B) A Tornado Warning in Madison County,
- C) Lightning Strikes within ten (10) miles of the event,
- D) Hail,

E) High winds, generally, sustained for 3 seconds or more at thirty (30) mph,

F) Extreme heat temperatures (Heat Index at or above 105 F) (Page 3).

In the event of imminent danger due to any of the above weather conditions, participants will be directed to leave the staging and/or outside exercise areas and seek shelter in the nearest best available refuge areas, (Pages 4 - 6) located on the first floor of Foster Building, the first floor of Jones Building, or the basement of Coates Building. See the Best Available Refuge Area information in the Building Emergency Action Plans for Foster, Jones, and Coates (<https://emergency.eku.edu/building-emergency-action-plans>). The decision to halt, postpone, or cancel the event will be made by Madison County Emergency Management Agency staff and/or the ECU Emergency Management Director. Public Safety personnel in conjunction with the ECU Emergency Management Director have the responsibility to issue an “all clear” message when it is safe to resume normal activities.

7) Radio Communications for the Exercise will take place on ICS/Ops 1 Channel. Alternate radio channels will be determined ad hoc as needed. **(Use Plain Talk – No Codes)**

8) Be Aware that ECU is inviting the occupants of the Coates and Jones Buildings to participate in the exercise and/or remain in the buildings to experience this mock disaster from the inside. Although alternative work spaces have been identified in the University Library, for those individuals not wanting to be involved in the exercise, not all individuals and/or offices will desire or be able to relocate out of the exercise area. Our intent is to only minimally impact the regular business of the University. Some offices will remain occupied, and employees will be present, with degrees of participation varying from full exercise play to no exercise play. If an area or office is out of bounds for exercise play, or if individuals are coming and going to and from their work spaces, and they are not actively participating, or if participants decide to end their exercise play, the Out of Play/Area and Hall Pass is available for them to print, carry, and/or display. The Pass indicates that the area and/or person is out of play, not actively participating in the exercise, and that emergency responders should bypass that area and/or person. The Out of Play/Area and Hall Pass (Page 8) is available at: [http://emergency.eku.edu/sites/emergency.eku.edu/files/out\\_of\\_play\\_-\\_area\\_and\\_hall\\_pass.pdf](http://emergency.eku.edu/sites/emergency.eku.edu/files/out_of_play_-_area_and_hall_pass.pdf)

9) For ECU Students, Faculty, Staff, and Others occupying the Coates and Jones Buildings during the exercise on July 25<sup>th</sup>, 2017, please print, read, and share the Targeted Violence Exercise Safety Briefing (Pages 9-12) information with everyone in your office. Of particular note is the following advice:

In a real event, where you are the target of an actual Targeted Violence Attack, you must quickly determine the most reasonable way to protect your own life. For these individuals, Targets, we recommend you Evacuate - Hide Out - Take Action (Guidance from U.S. Department of Homeland Security) ((or)) Run - Hide - Fight (Registered Trademark of the City of Houston), followed by calling 911 when it is safe for you to do so. These are essentially the same options.

For today’s exercise only, for your safety and for the safety of others, participants (e.g. Bystanders and Victims) in the Active Shooter Exercise on July 25<sup>th</sup>, must not attempt to fight an attacker during the exercise.

The available response options, for participants during this exercise, are Evacuate or Run (or) Hide Out or Hide, with NO Take Action (or) Fight being appropriate for the exercise.

## NOAA's National Weather Service

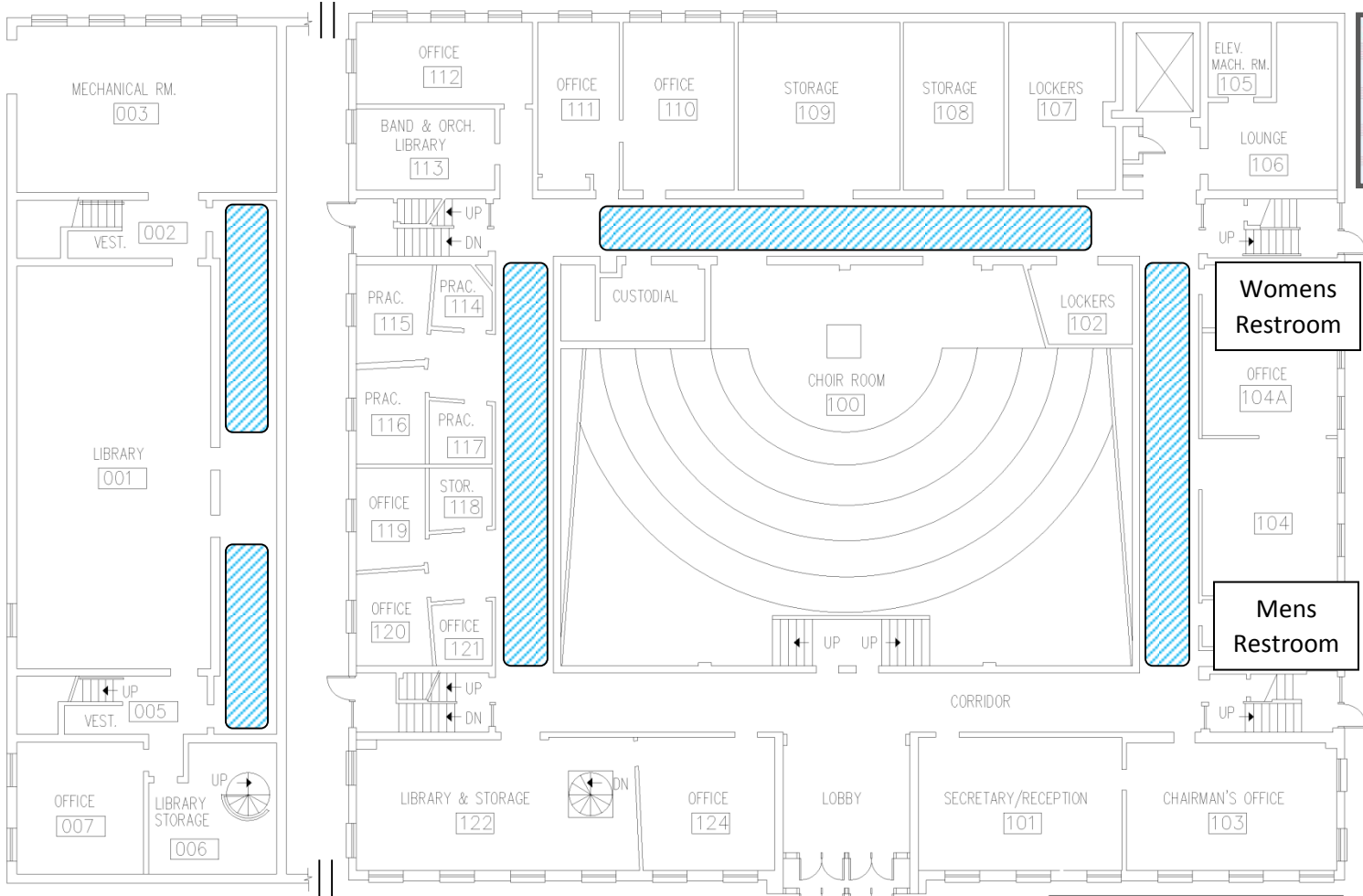
### Heat Index

Temperature (°F)

Relative Humidity (%)	80	82	84	86	88	90	92	94	96	98	100	102	104	106	108	110
40	80	81	83	85	88	91	94	97	101	105	109	114	119	124	130	136
45	80	82	84	87	89	93	96	100	104	109	114	119	124	130	137	
50	81	83	85	88	91	95	99	103	108	113	118	124	131	137		
55	81	84	86	89	93	97	101	106	112	117	124	130	137			
60	82	84	88	91	95	100	105	110	116	123	129	137				
65	82	85	89	93	98	103	108	114	121	128	136					
70	83	86	90	95	100	105	112	119	126	134						
75	84	88	92	97	103	109	116	124	132							
80	84	89	94	100	106	113	121	129								
85	85	90	96	102	110	117	126	135								
90	86	91	98	105	113	122	131									
95	86	93	100	108	117	127										
100	87	95	103	112	121	132										

#### Likelihood of Heat Disorders with Prolonged Exposure or Strenuous Activity

- Caution
  Extreme Caution
  Danger
  Extreme Danger



**Legend**

Stairs

Elevator

Tornado Shelter

**Foster Building  
Basement and First Floor  
Tornado Shelter Areas**

- Tornado Shelter Areas**
- When a tornado warning is issued, everyone move to the tornado shelter areas indicated on the floor plan.
  - Avoid doors, windows, and sources of flying debris.
  - Remain in the shelter areas until an all clear is issued or until all wind and noise subside.
  - Please assist those with disabilities to the shelter areas.
  - If available, bring flashlights, jackets, blankets, and wear hard shoes.

**Main Entrance**

**EKU Emergency Management**  
6-28-2011

**EKU**  
EASTERN KENTUCKY UNIVERSITY  
DIVISION OF FACILITY SERVICES  
CENTRY BUILDING  
RICHMOND, KY 40475  
606-622-2966

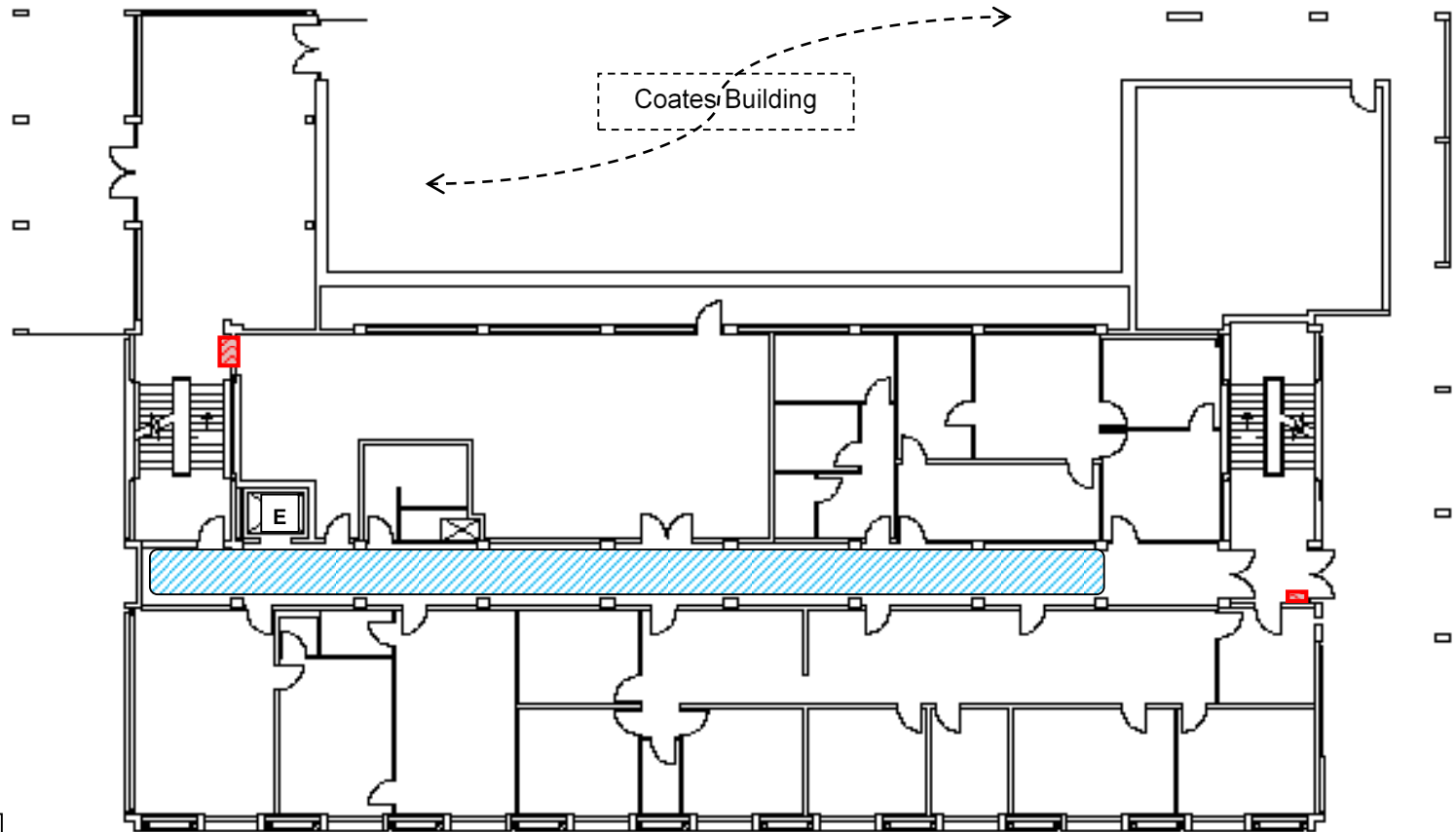
PROJECT:  
FOSTER MUSIC BLDG.  
FIRST & BASEMENT FLOOR

SCALE: **1-3**





**JONES BUILDING  
FIRST FLOOR  
TORNADO SHELTER AREA**



**Legend**

Stairs

Elevator

Tornado Shelter

Fire Control Panel

EKU Emergency Management 11-18-2011

**Tornado Shelter Areas**

- When a tornado warning is issued, everyone move to the tornado shelter areas indicated on the floor plan.
- Avoid doors, windows, and sources of flying debris.
- Remain in the shelter areas until an all clear is issued or until all wind and noise subside.
- Please assist those with disabilities to the shelter areas.
- If available, bring flashlights, jackets, blankets, and wear hard shoes.

**Go to the Interior of the  
Lowest Level Possible  
and Avoid Sources  
of Flying Debris  
(Windows and Doors)**



**Tornado Shelter Areas**

When a tornado warning is issued, everyone move to the tornado shelter areas indicated on the floor plan.

Avoid doors, windows, and sources of flying debris.

Remain in the shelter areas until an all clear is issued or until all wind and noise subside.

Please assist those with disabilities to the shelter areas.

If available, bring flashlights, jackets, blankets, and wear hard shoes.



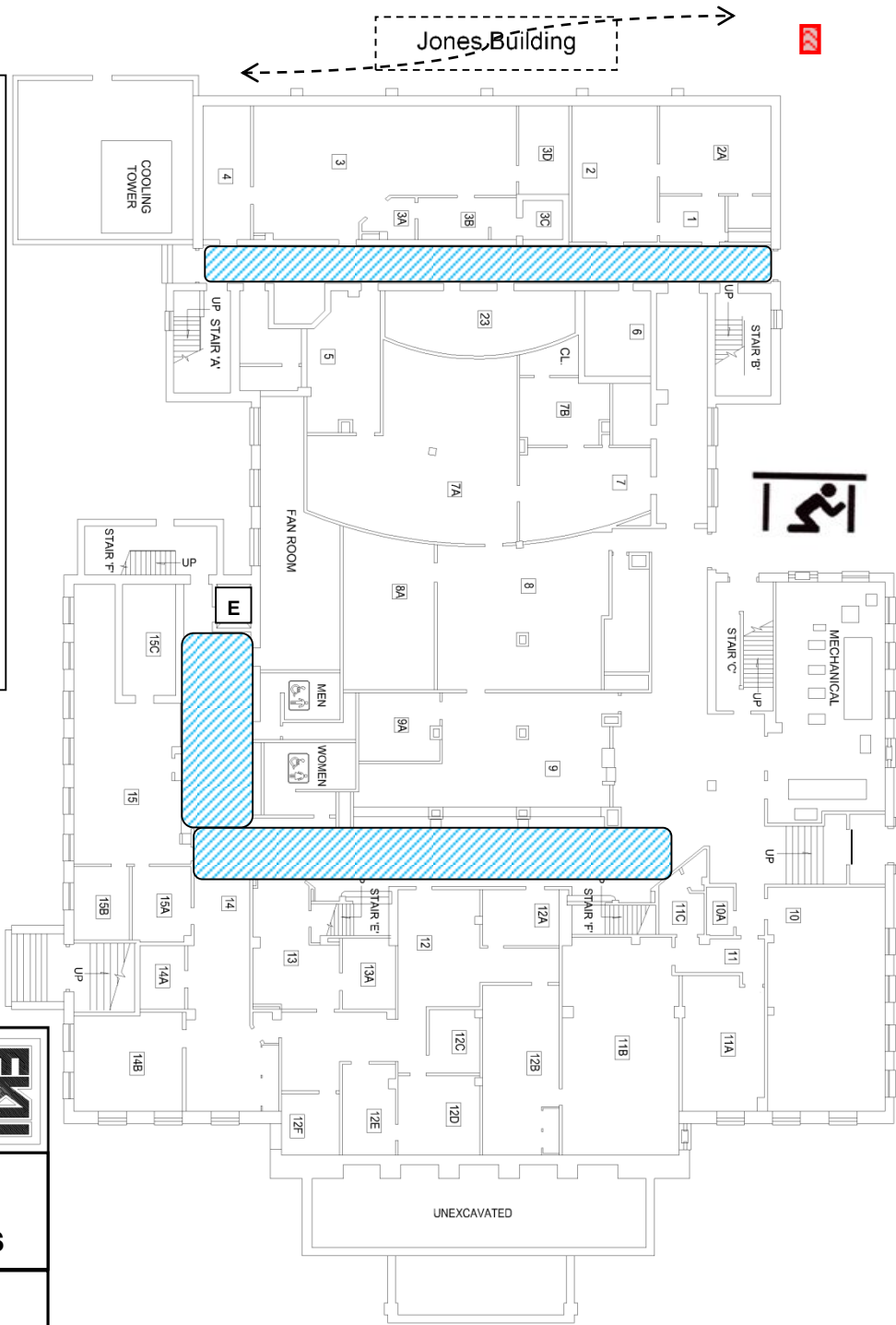
Fire Control Panel  
Jones Building  
First Floor Lobby



EASTERN KENTUCKY  
UNIVERSITY  
DIVISION OF FACILITY SERVICES  
RICHMOND, KY 40475  
859-622-2968

**COATES BUILDING  
GROUND FLOOR  
TORNADO SHELTER AREAS**


EKU Emergency Management 11-18-2011





**Go to the Interior of the  
Lowest Level Possible  
and Avoid Sources  
of Flying Debris  
(Windows and Doors)**



**Legend**

Stairs  


Elevator  


Tornado Shelter  




Eastern Kentucky University Active Shooter Full Scale Exercise Tuesday, July 25th, 2017, 9AM to 1PM  
 Coates Building, Jones Buildings, Jones Lot, Crabbe Street, and Crabbe St Lot



- Exercise Area Inner Perimeter (Danger Tape and Police Training In Progress Signs) [About 1,500 Ft]
  - Exercise Area Outer Perimeter (Caution Tape and Police Training In Progress Signs) [About 4,500 Ft]
  - Exercise Area Road Block (Barricade and Traffic Control) [2]
  - Safety Check (No Live Weapons or Ammunition of Any Kind - Carried by Responders) [6] [Also 5+9 =14 Controllers] (Weapons Must be Secured) [Controllers/Safety Officers 13 LEOs + 9 Other] [Victims 12 (4 Fatal + 8 Injured)] [Evaluators 7]
  - Barricades (White in Color) [13]
  - Channelizers [63]
  - Police Training In Progress – Large Sign (24 X 36) (Tied to Channelizer, Fence, or Wall) [24]
  - Police Training In Progress – Small Yard Sign (12 X 18) (Heavy Duty Ground Stakes) [53]
- (Note) Not To Scale – Numbers and Positions of Barricades, Channelizers, and Signs are Approximate

**NO EXERCISE**



**THIS AREA/PERSON IS  
OUT OF PLAY  
BYPASS THIS  
AREA/PERSON**

***EKU***

EMERGENCY MANAGEMENT



## **Targeted Violence Exercise Safety Briefing (See Targeted Violence Exercises)**

Eastern Kentucky University, along with the Madison County Emergency Management Agency, is facilitating an Active Shooter Full Scale Exercise on Tuesday, July 25th, 2017, from 9AM to 1PM. The Federal Bureau of Investigation identified 160 active shooter incidents that occurred in the United States between 2000 and 2013. If and when one of these events happens in our community, it will be important for local Law Enforcement, University Personnel, and other Emergency Responders to be prepared. This exercise is designed to help with that preparation.

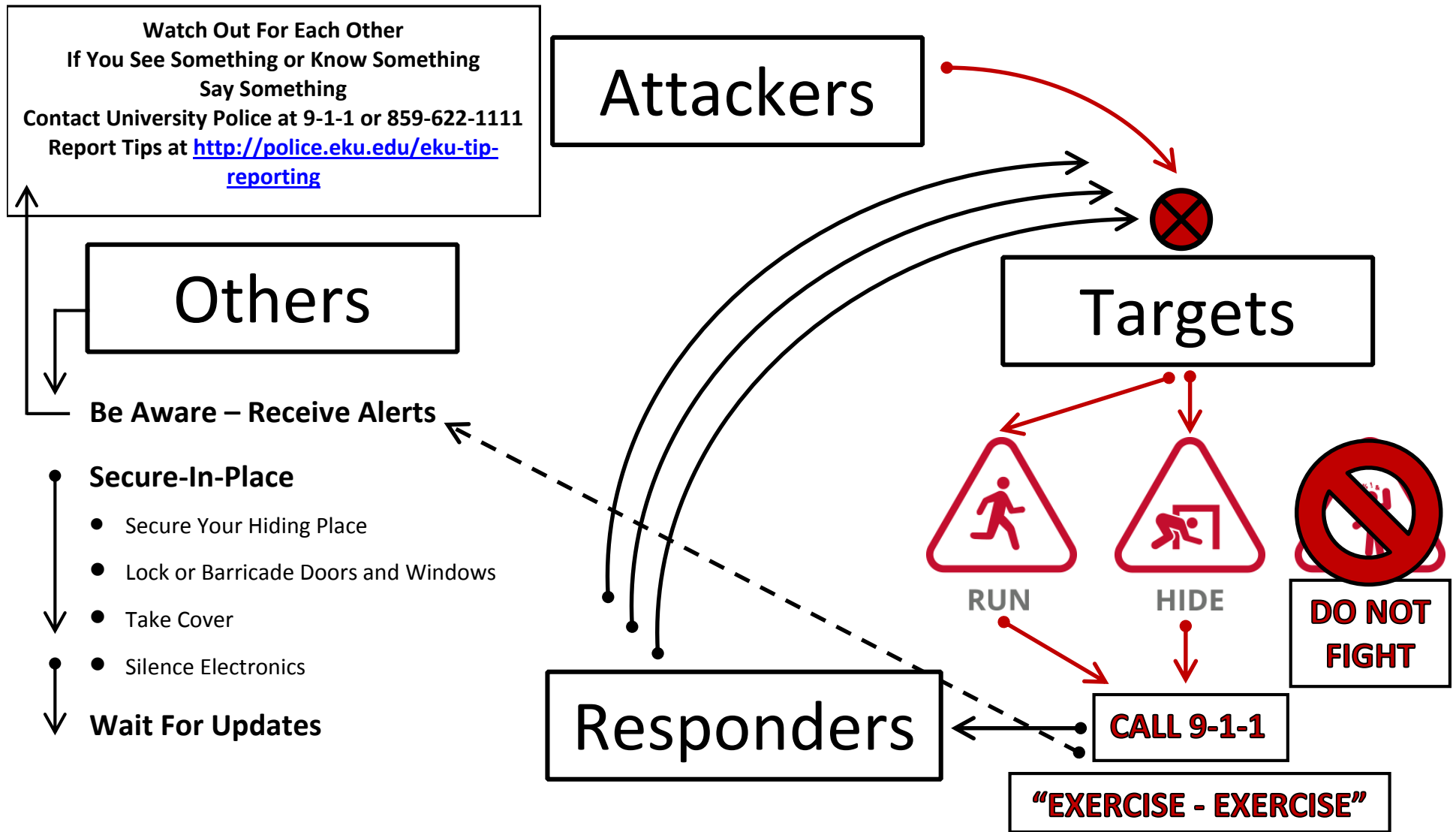
Volunteers are being asked to carry out the role of students and others who might be involved in an active shooter situation. Volunteers should understand that the scenario will be as realistic as possible (while instituting safeguards to preclude using live ammunition). Thus, there will be a mock shooting, with volunteers taking on the role of victims, and others, expected to be present at a University, during a targeted violence attack, and the subsequent response. Real weapons may be displayed and blank ammunition may be fired. No live ammunition, tasers, blades, batons, or chemical weapons will be permitted inside the exercise area. There will be physical demands placed on the volunteers including running, quick movements, evasive actions, and other maneuvers that could lead to slips, trips and falls. There will be mental stress introduced during the exercise which the volunteers should be prepared for, including being shouted at by hostile gunmen, and being ordered to take actions by police officers. Although safety precautions will be undertaken, mental, emotional, and physical injury may still result. This is a voluntary exercise. There is no requirement or expectation of participation. Potential volunteers are encouraged to give serious consideration to any factors that may lead them to have a strongly negative reaction, including, but not limited to, any physical or mental health conditions that would increase the risk of injury upon exposure to a simulated life-threatening situation. Bystanders not wishing to voluntarily participate will be asked to stay clear of the exercise area during the exercise.

The exercise will be recorded by the officials involved but any other recording or photographs are expressly prohibited. Volunteers are expected to follow scripts and to obey the Exercise Director as well as his/her designees (Controllers, Evaluators, Safety Officers).

### **Safety Rules**

- 1) No weapons are permitted inside the exercise area. This includes no firearms, no ammunition, no tasers, no knives, no batons/clubs, and no chemicals. (Note – Responding Police may carry inert, simulated, or actual firearms, but they shall be cleared, checked, and rendered safe, with no live ammunition permitted).
- 2) For Exercise Purposes, and for your safety and the safety of others, volunteers for the Active Shooter Exercise on July 25th, 2017, shall not attempt to fight an attacker during the exercise. The available response options, for volunteers during this exercise, are Evacuate or Run (or) Hide Out or Hide, with NO Take Action (or) Fight being appropriate for the exercise.
- 3) Any communication that volunteers have with anyone outside of the immediate exercise area shall be preceded with the words “Exercise” “Exercise”. (Note – This is meant for non-face-to-face communication with individuals or groups outside of the exercise area [e.g. When making 9-1-1 calls]. Any person within the exercise area is presumed to know that this event is an exercise)
- 4) If an actual emergency exists, or a dangerous situation is observed, and exercise play must be stopped, the commands “Wash Out” or “Real World” shall be used to stop exercise play. Any person may order a stop of the exercise if they become aware of an emergency condition or dangerous situation in the exercise area.
- 5) The overall exercise area includes: Coates Building, Jones Building, Jones Lot, Crabbe Street Lot, Foster Building, Campbell Building, Burrier Building, Roark Building, Memorial Science Building, Moore Building, Cammack Building, Blanton House, and the Ravine.

# Targeted Violence Exercises



## Targeted Violence Attacks – Training (See Targeted Violence Attacks)

Your safety is very important to ECU. Maintaining your safety is a joint responsibility, between you, the University, and emergency response agencies. The person most responsible for your safety is you. Here is some advice so you can take personal responsibility, and make informed decisions, about safe actions you can take to protect yourself.

Targeted violence, when an individual is actively engaged in killing or attempting to kill people in a confined and/or populated area, is a highly individualized crime based upon highly individualized and unique motivators. Whether we refer to it as active violence, active shooter, or some other term, ECU Division of Public Safety personnel train frequently to appropriately respond to incidents of this kind, to stop the threat, and provide care for those impacted.

While our full time, dedicated, emergency responders have specific jobs to do during a targeted violence attack, you too have a responsibility to know what you can do to protect yourself. This information is meant to help you learn about options you should consider, to prepare yourself, during a targeted violence attack, should one occur.

To help explain what you can do to protect yourself, we created the Targeted Violence Attacks Conceptual Training Framework. When we think about targeted violence attacks, we can generally group people into one of four categories. This is important to know, because your options for consideration and action depend upon what group you belong to. There are Attackers, Targets, Responders, and Others.

The **Attacker** is the person perpetrating violence upon other people. They are dictating the events. A targeted violence attack is a human caused, no notice, emergency, and usually, responders do not know an attack is underway, until notifications are made via 9-1-1 calls.

**Targets** are the individuals who are being directly targeted by the violence. In a dangerous, or potentially dangerous, situation, you must quickly determine the most reasonable way to protect your own life. For these individuals, we recommend you Evacuate – Hide Out – Take Action (Guidance from U.S. Department of Homeland Security) or Run – Hide – Fight (Registered Trademark of the City of Houston), followed by calling 911 when it is safe for you to do so. These are essentially the same options, and are represented in the training framework with the Run – Hide – Fight graphics. Once you call 9-1-1 to report what is happening, you start a chain of events, intended to stop the violence and warn others in the community about the danger.

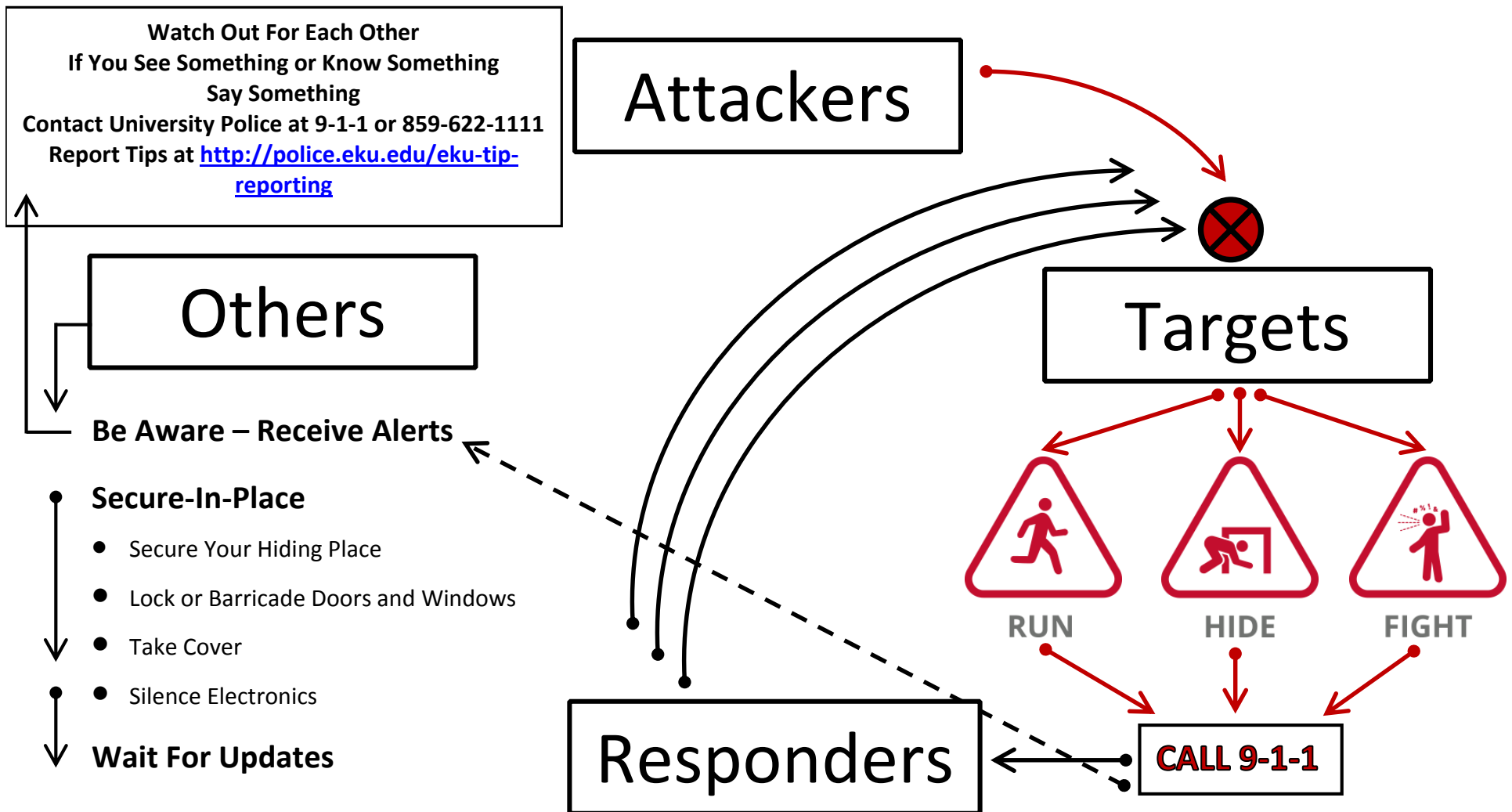
**(Note)** For Exercise Purposes, and for your safety and the safety of others, Volunteers for the Active Shooter Exercise on July 25th, 2017, shall not attempt to fight an attacker during the exercise. The available response options, for volunteers during this exercise, are Evacuate or Run (or) Hide Out or Hide, with NO Take Action (or) Fight being appropriate for the exercise.

**Responders** are the dedicated professionals who run toward the danger, to stop it, to contain it, to keep it from growing and becoming worse, and to provide life safety, environmental, and property protection at the scene of the incident. Responders include, but are not limited to, Police, Emergency Medical Services, Fire and Rescue, Emergency Management, and others. Lots of resources will be set into motion, and it is best to avoid the area, if you are not directly involved, so you don't complicate response operations. Emergency response also includes the ECU Alert functions.

**Others** refers to everyone else not being directly targeted by the violence. For others, we recommend that you maintain awareness about where you are, what can happen to you, how to exit every space you enter into, and where you can seek shelter wherever you go. You should also sign up for, and pay attention to, alerts that are sent to the community. You can expect that the information you get may be sparse at first. That is because it takes time for responders to assess the situation, relay information, and work the problems they encounter. We will provide updates as more information becomes available. Once informed of violence, or potential violence, we recommend that you Secure-In-Place by 1) Securing your hiding place; 2) Locking or barricading doors and windows; 3) Taking cover; 4) Silencing electronics; and 5) Waiting for updates.

Additionally, we want to remind everyone to watch out for each other. It can be a tough world out there, and we can all use a little help sometimes. We should strive to be inclusive, not exclusive. Be open, flexible, and unbiased. Treat everyone with dignity and respect. And if you see something or know something that you think is suspicious, say something. Contact University Police at 9-1-1 or 859-622-1111. Be sure to specify where you are; whether you are on ECU's campuses, and your exact location. Also know that you can report tips at <http://police.eku.edu/eku-tip-reporting>.

# Targeted Violence Attacks



For more information about Targeted Violence Preparedness, visit:

<http://emergency.eku.edu/targeted-violence>.

For information about our Full-Scale Active Shooter Exercise, visit:

<http://emergency.eku.edu/insidelook/full-scale-active-shooter-exercise-july-2017>.

