

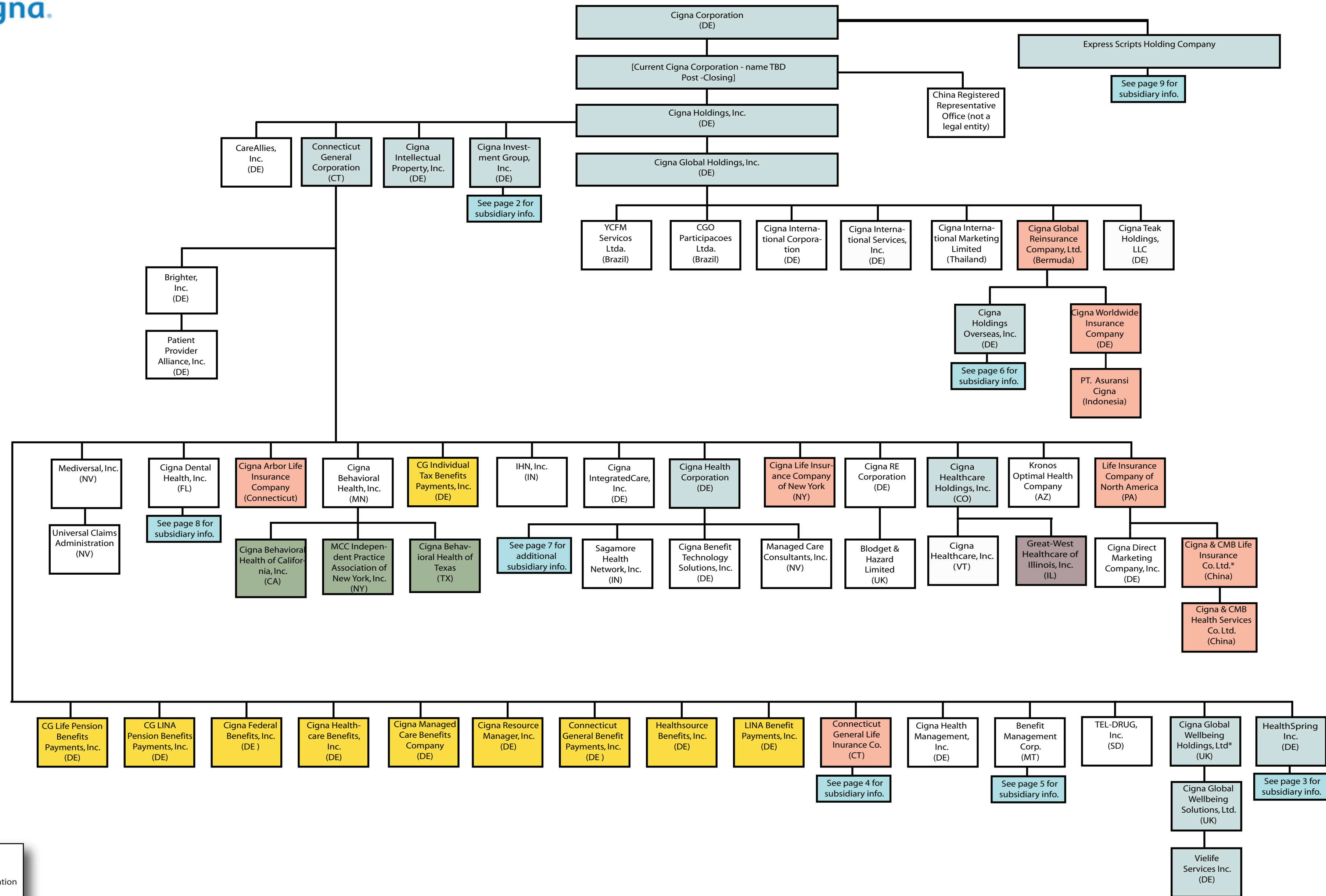
EXHIBIT E-2

Post-Closing Organizational Chart of the Applicants and Their Affiliates

Please see attached.



Cigna Corporation Subsidiaries and Affiliates Post-Closing Organization Chart

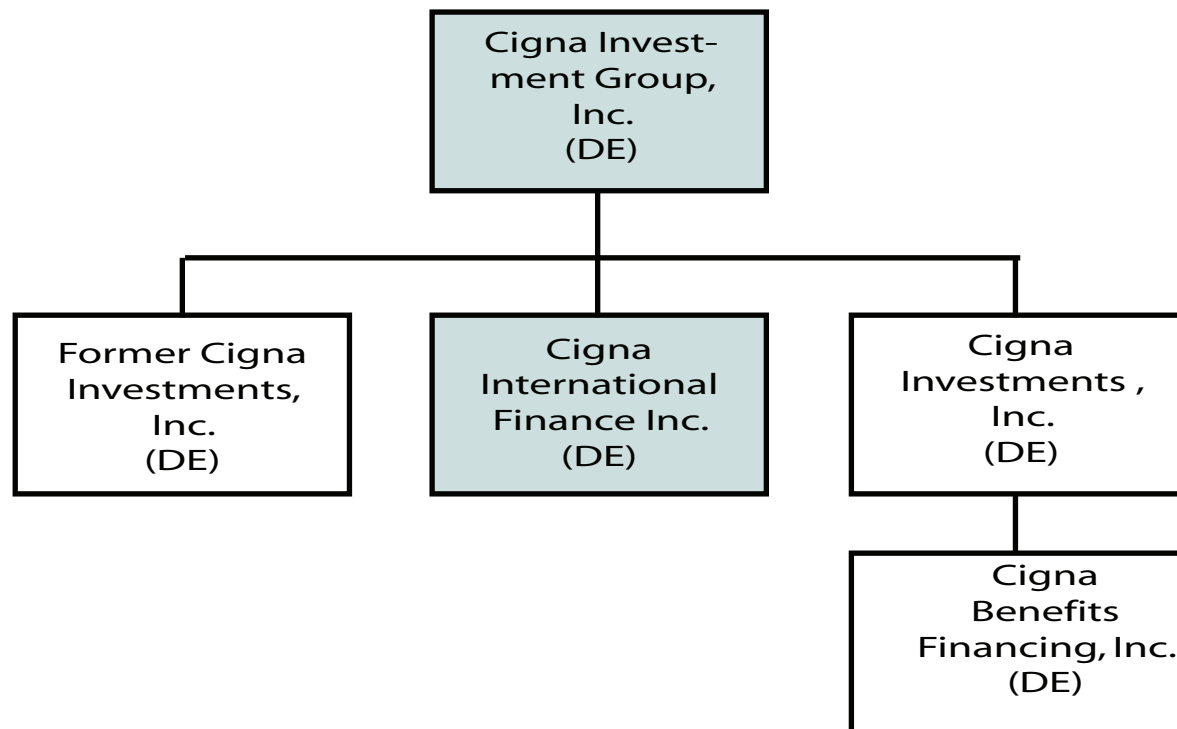


- Behavioral Health Company
- Dental Company
- Health Maintenance Organization
- Holding Company
- Insurance Company
- Real Estate Investment Company
- Tax Reporting Company

* Indicates less than 100% or split ownership
 ** Entities are shown on a separate chart



Cigna Corporation Subsidiaries and Affiliates Post-Closing Organization Chart

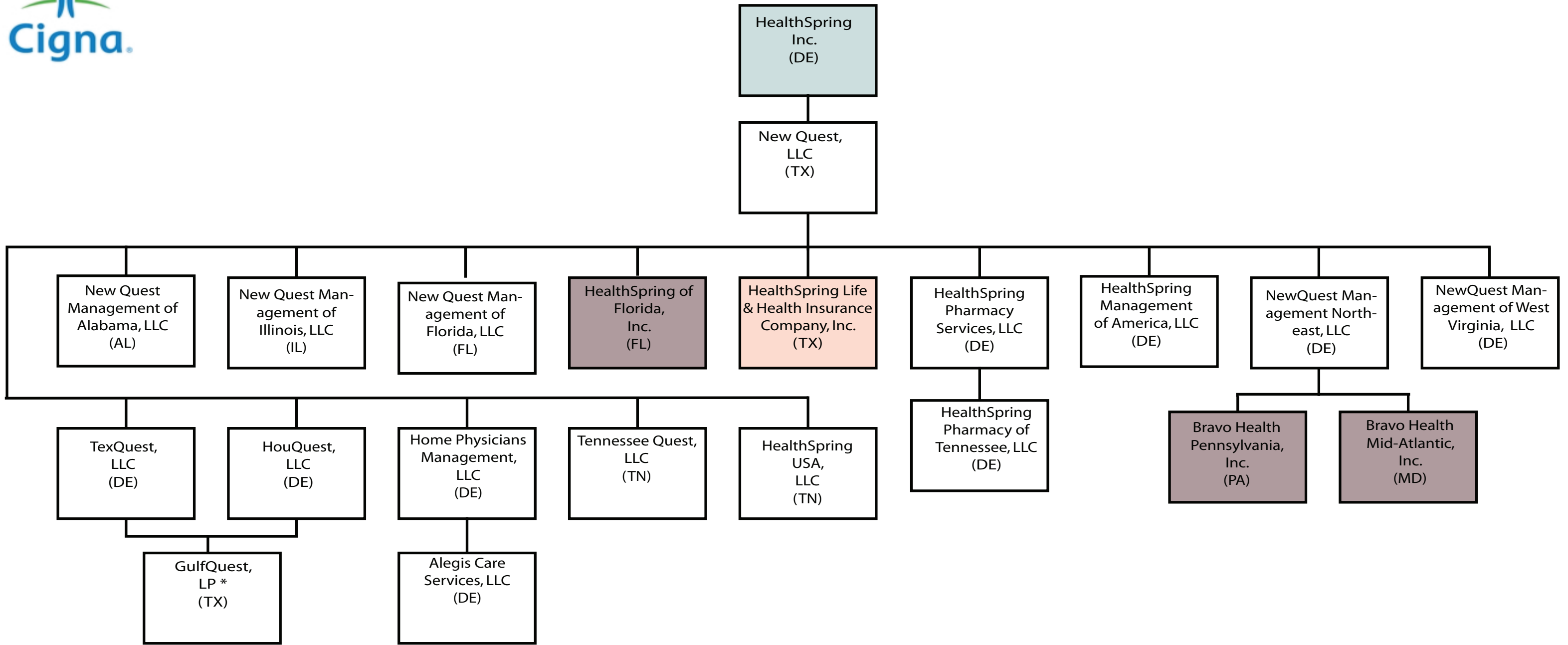


- Behavioral Health Company
- Dental Company
- Health Maintenance Organization
- Holding Company
- Insurance Company
- Real Estate Investment Company
- Tax Reporting Company

* Indicates less than 100% or split ownership
** Entities are shown on a separate chart



Cigna Corporation Subsidiaries and Affiliates Post-Closing Organization Chart

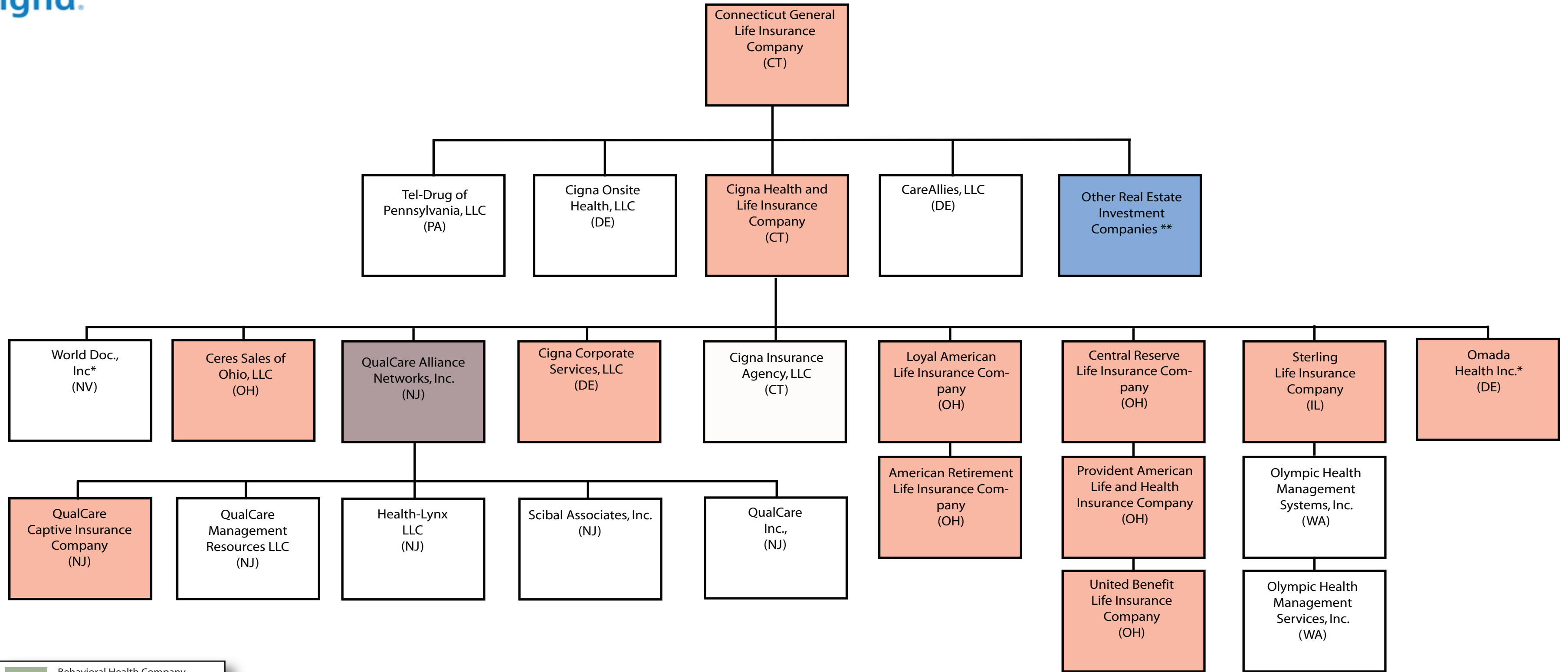


	Behavioral Health Company
	Dental Company
	Health Maintenance Organization
	Holding Company
	Insurance Company
	Real Estate Investment Company
	Tax Reporting Company

* Indicates less than 100% or split ownership
 ** Entities are shown on a separate chart



Cigna Corporation Subsidiaries and Affiliates Post-Closing Organization Chart

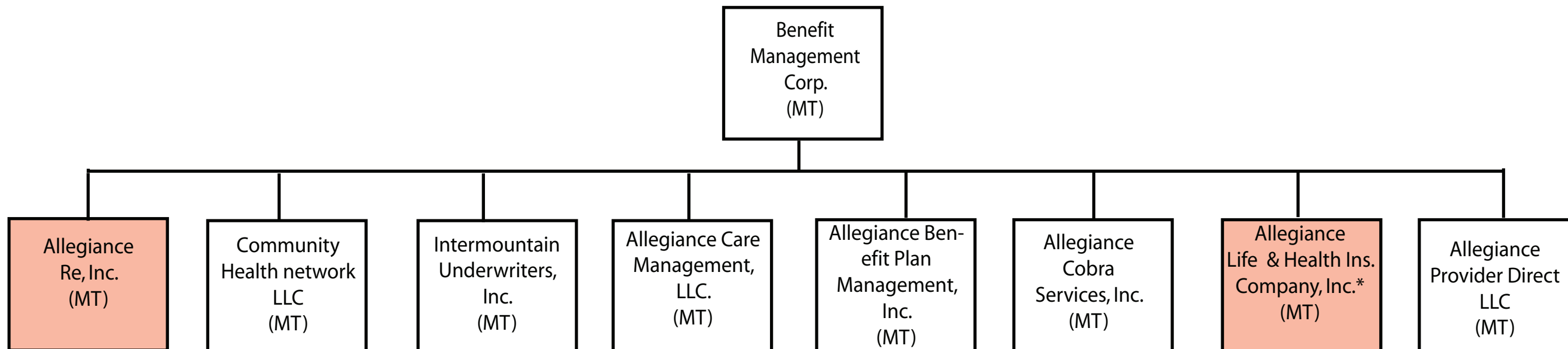


	Behavioral Health Company
	Dental Company
	Health Maintenance Organization
	Holding Company
	Insurance Company
	Real Estate Investment Company
	Tax Reporting Company

* Indicates less than 100% or split ownership
 ** Entities are shown on a separate chart



Cigna Corporation Subsidiaries and Affiliates Post-Closing Organization Chart



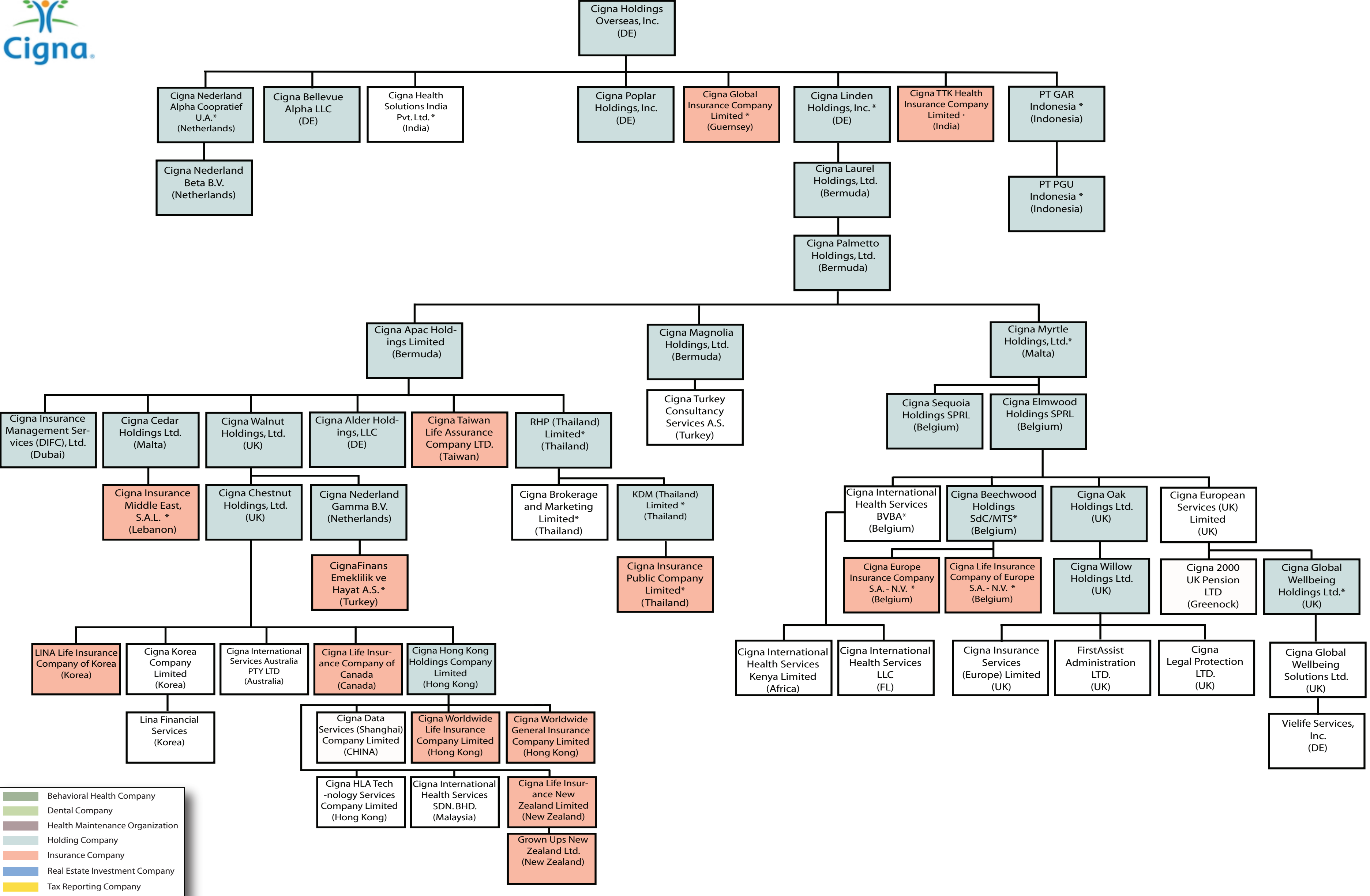
■	Behavioral Health Company
■	Dental Company
■	Health Maintenance Organization
■	Holding Company
■	Insurance Company
■	Real Estate Investment Company
■	Tax Reporting Company

* Indicates less than 100% or split ownership

** Entities are shown on a separate chart



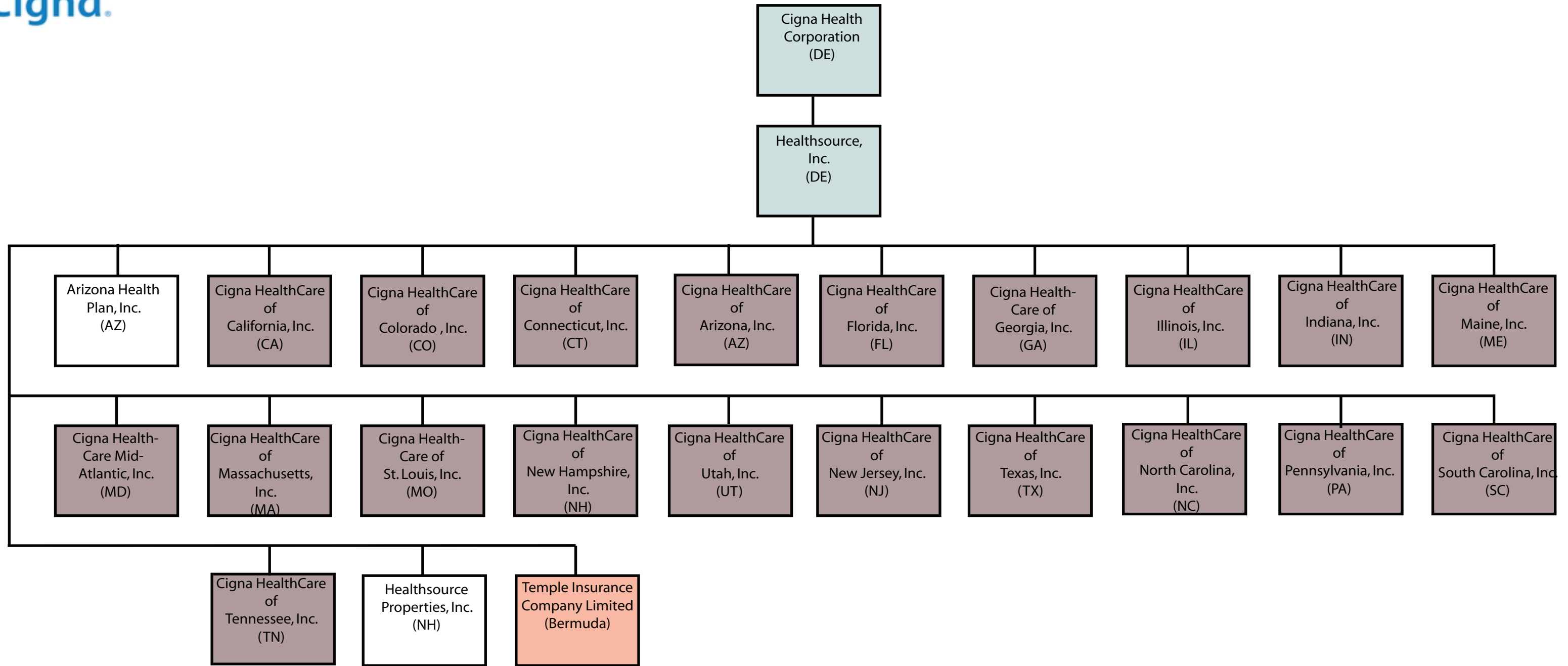
Cigna Corporation Subsidiaries and Affiliates Post-Closing Organization Chart



* Indicates less than 100% or split ownership
 ** Entities are shown on a separate chart



Cigna Corporation Subsidiaries and Affiliates Post-Closing Organization Chart



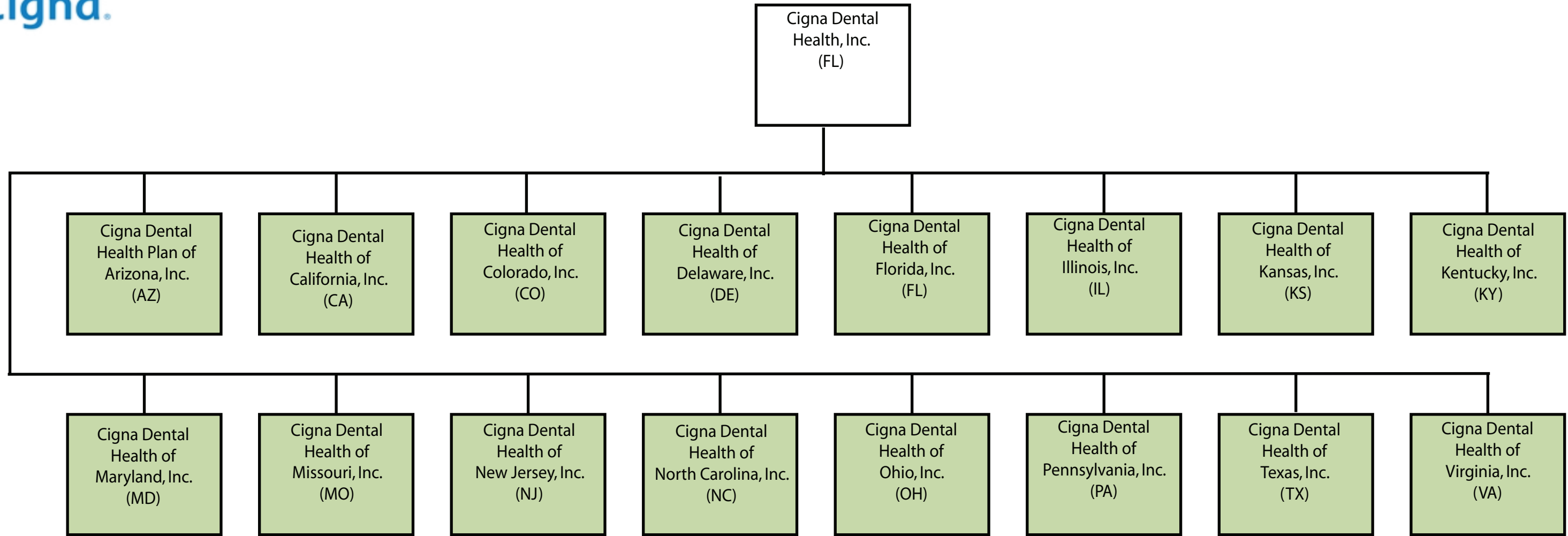
 Behavioral Health Company
 Dental Company
 Health Maintenance Organization
 Holding Company
 Insurance Company
 Real Estate Investment Company
 Tax Reporting Company

* Indicates less than 100% or split ownership

** Entities are shown on a separate chart



Cigna Corporation Subsidiaries and Affiliates Post-Closing Organization Chart



	Behavioral Health Company
	Dental Company
	Health Maintenance Organization
	Holding Company
	Insurance Company
	Real Estate Investment Company
	Tax Reporting Company

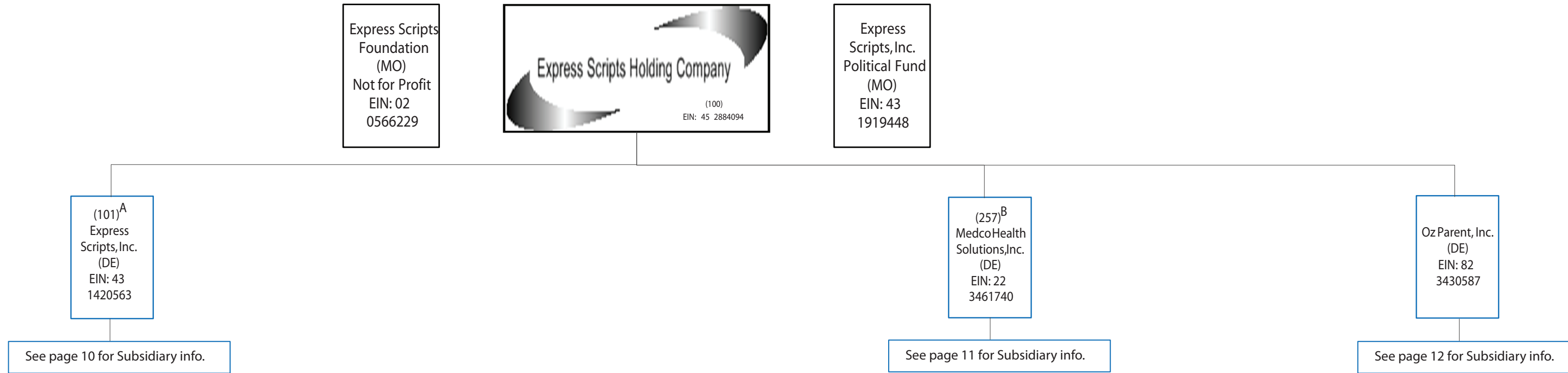
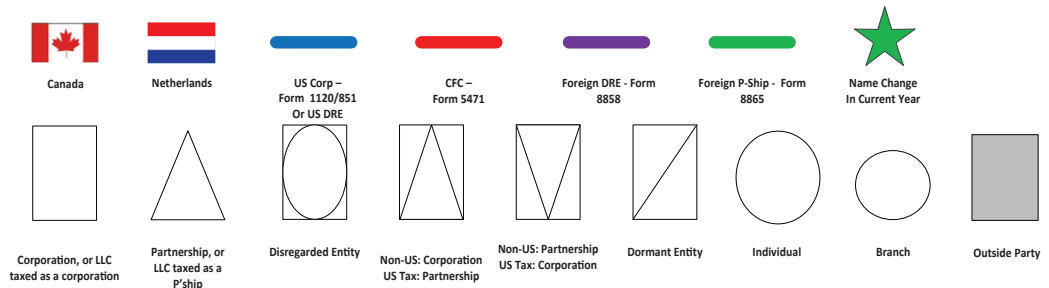
* Indicates less than 100% or split ownership

** Entities are shown on a separate chart



Cigna Corporation Subsidiaries and Affiliates Post-Closing Organization Chart

Legend



Oracle Company Footnotes

The entities below include the following oracle codes:

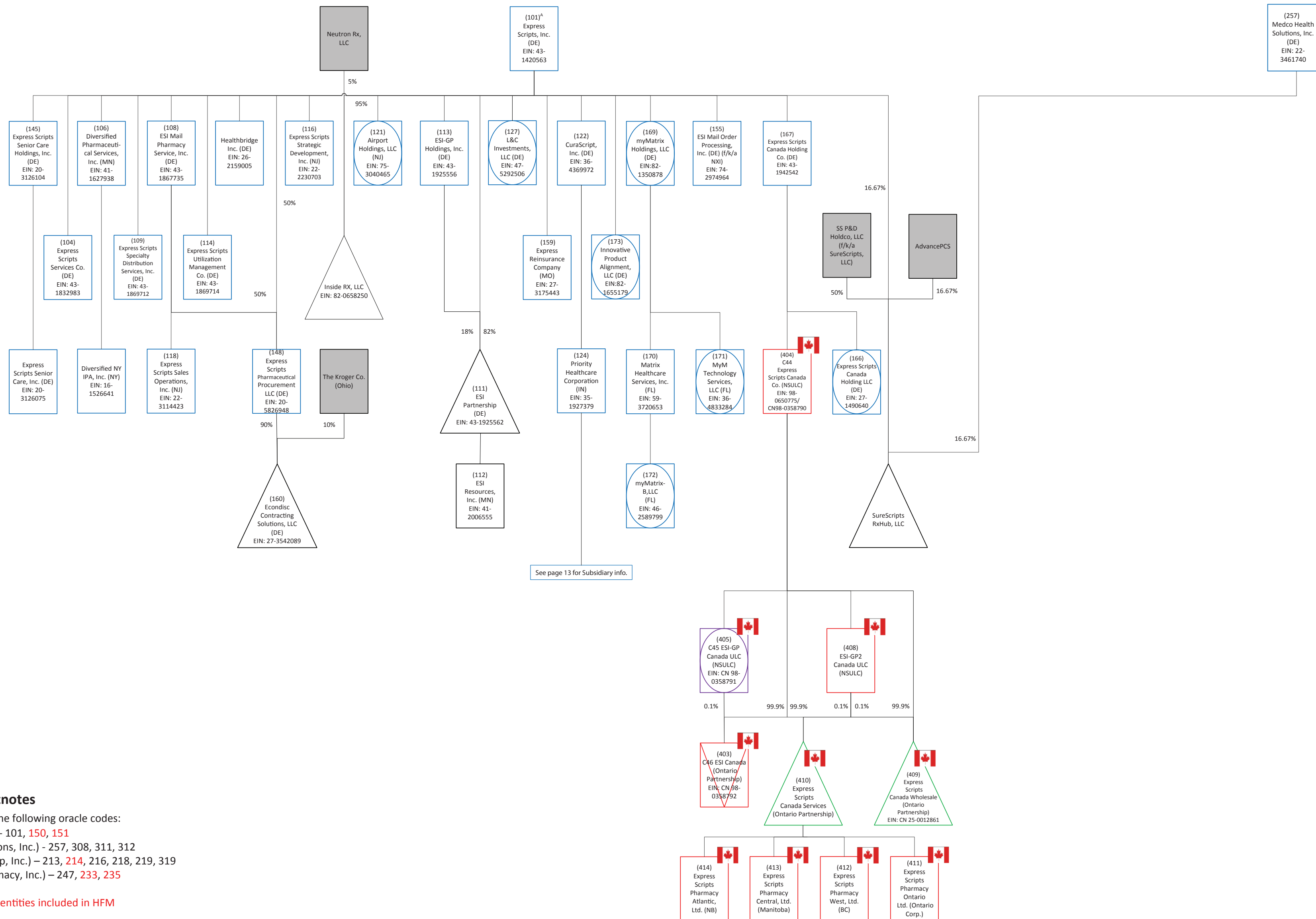
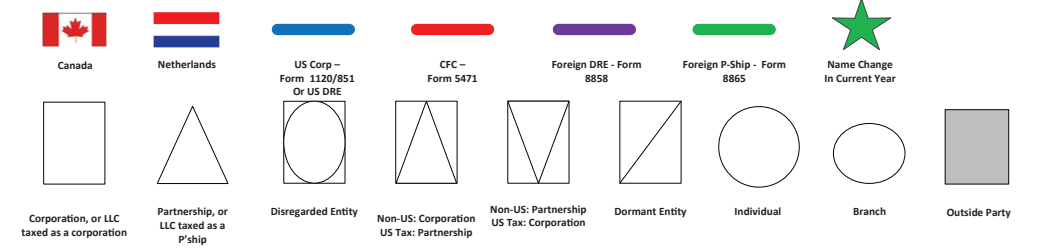
- A. (Express Scripts, Inc.) - 101, 150, 151
- B. (Medco Health Solutions, Inc.) - 257, 308, 311, 312
- C. (Accredo Health Group, Inc.) – 213, 214, 216, 218, 219, 319
- D. (Express Scripts Pharmacy, Inc.) – 247, 233, 235

*Inactive or disposed entities included in HFM



Cigna Corporation Subsidiaries and Affiliates Post-Closing Organization Chart

Legend



See page 13 for Subsidiary info.

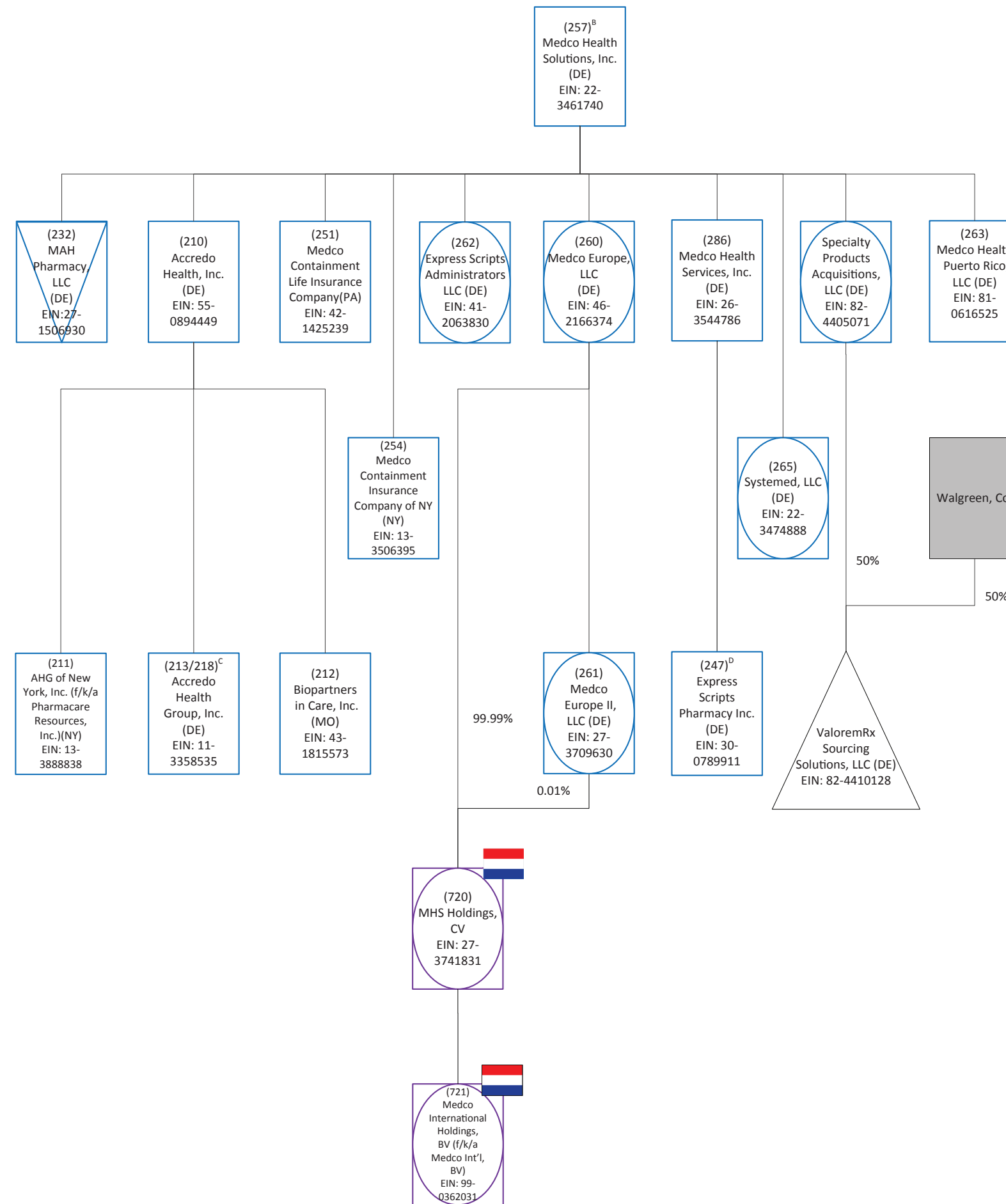
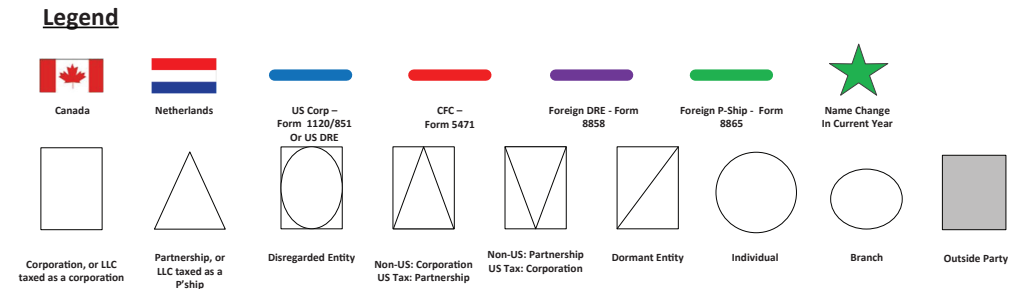
Oracle Company Footnotes

- The entities below include the following oracle codes:
- A. (Express Scripts, Inc.) - 101, 150, 151
 - B. (Medco Health Solutions, Inc.) - 257, 308, 311, 312
 - C. (Accredo Health Group, Inc.) - 213, 214, 216, 218, 219, 319
 - D. (Express Scripts Pharmacy, Inc.) - 247, 233, 235

*Inactive or disposed entities included in HFM



Cigna Corporation Subsidiaries and Affiliates Post-Closing Organization Chart



Oracle Company Footnotes

The entities below include the following oracle codes:

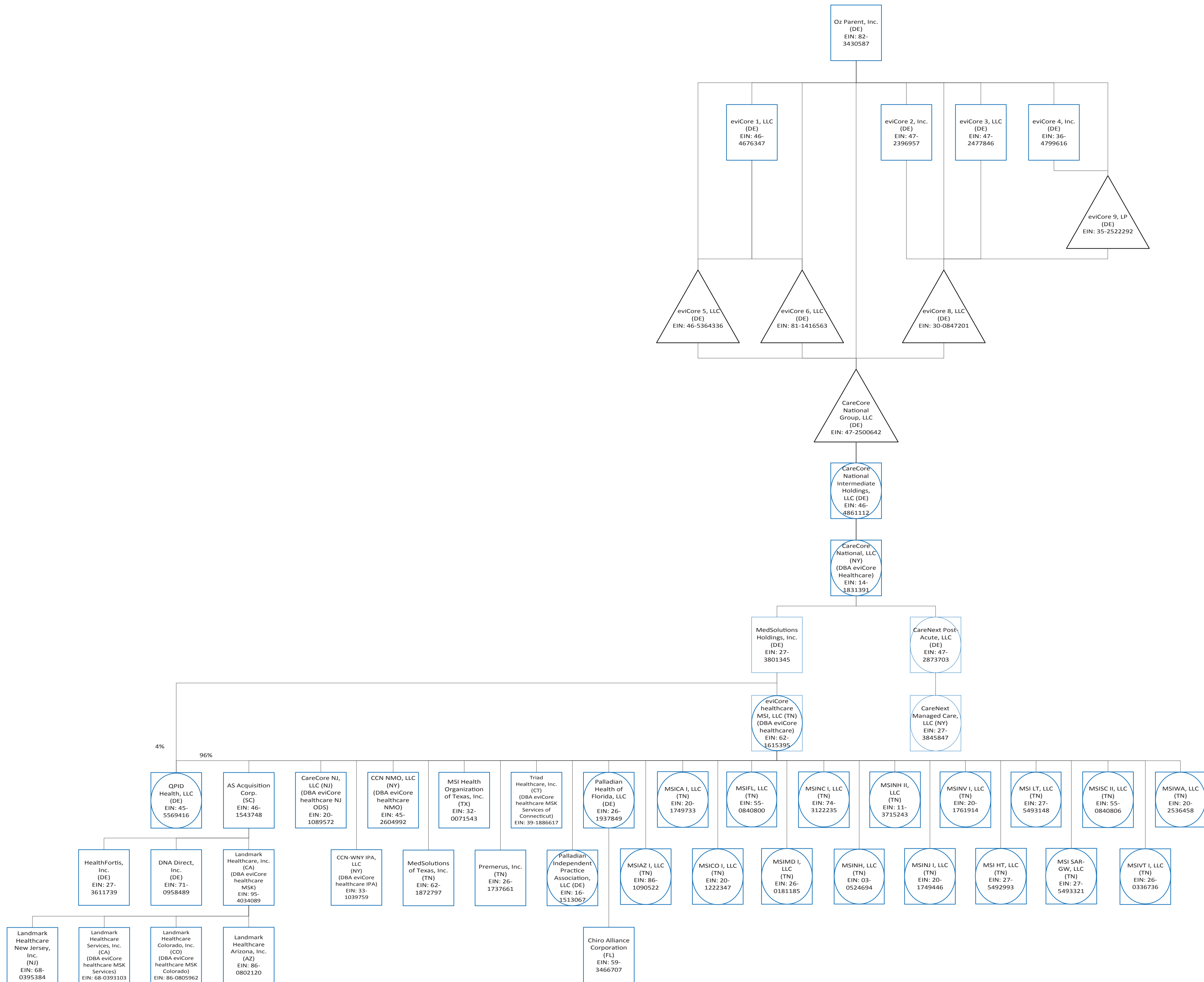
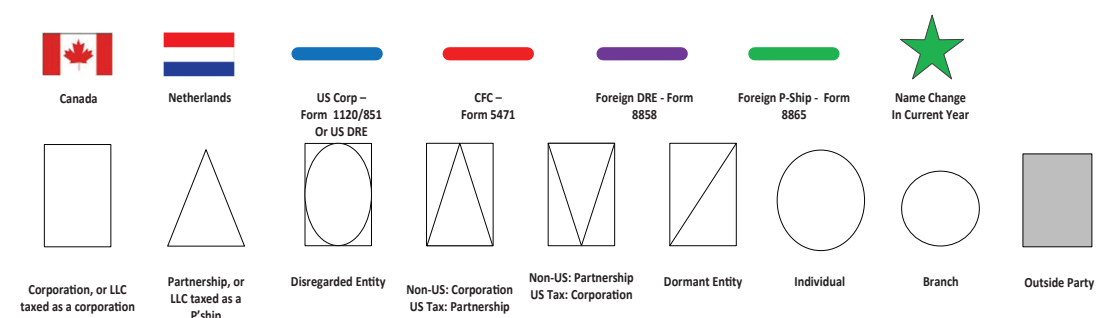
- A. (Express Scripts, Inc.) - 101, 150, 151
- B. (Medco Health Solutions, Inc.) - 257, 308, 311, 312
- C. (Accredo Health Group, Inc.) - 213, 214, 216, 218, 219, 319
- D. (Express Scripts Pharmacy, Inc.) - 247, 233, 235

*Inactive or disposed entities included in HFM



Cigna Corporation Subsidiaries and Affiliates Post-Closing Organization Chart

Legend



Oracle Company Footnotes

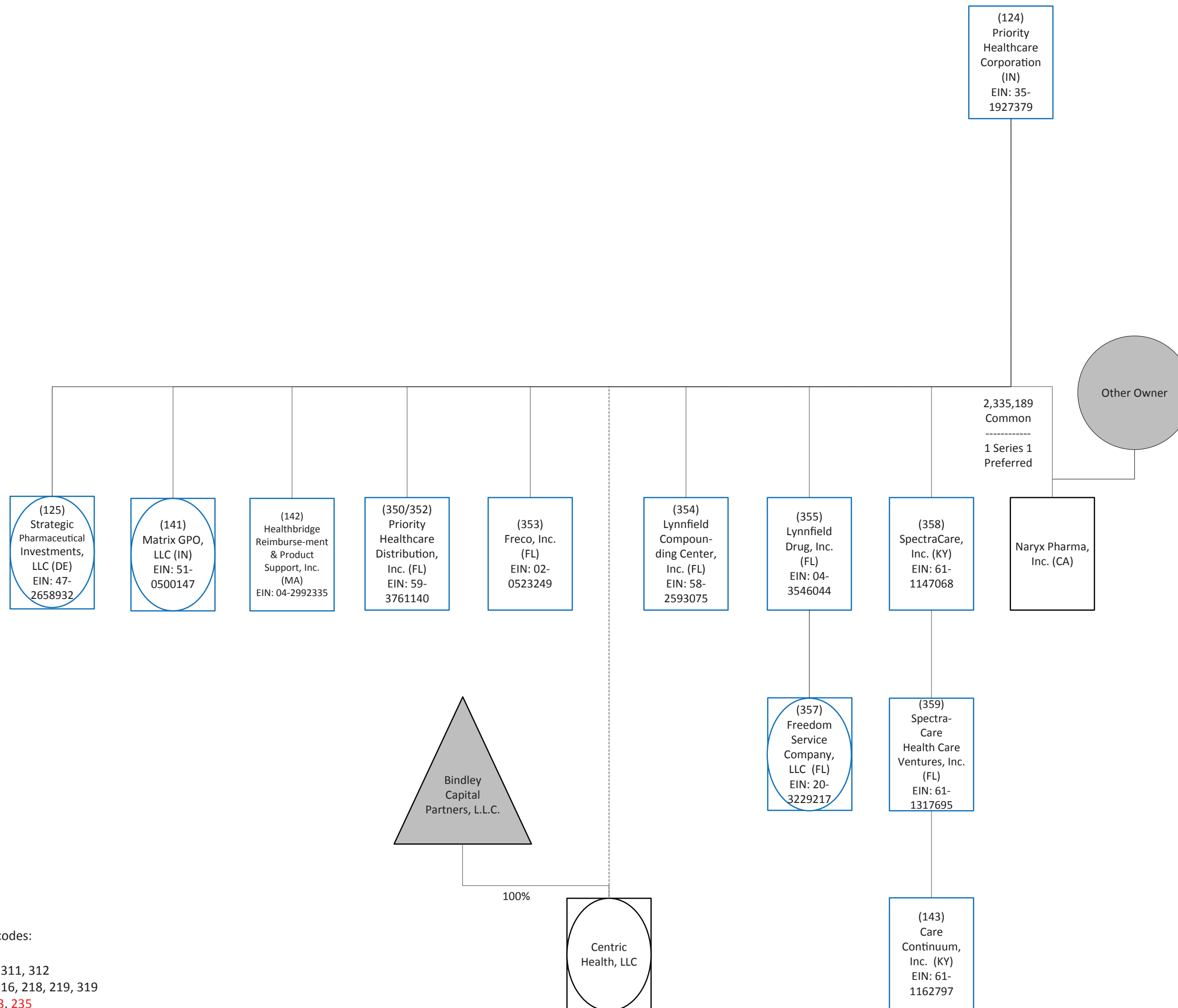
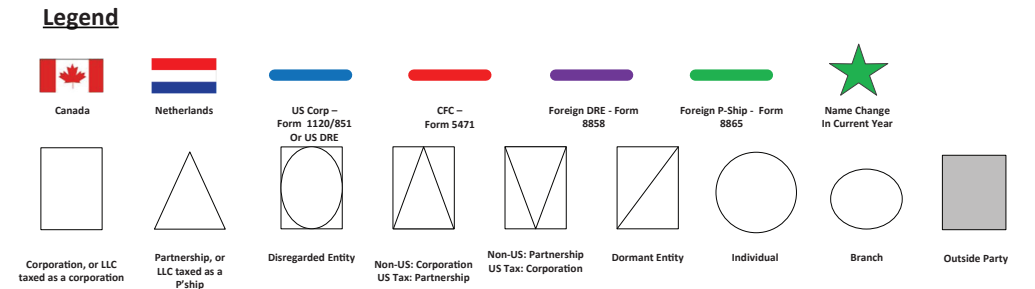
The entities below include the following oracle codes:

- A. (Express Scripts, Inc.) - 101, 150, 151
- B. (Medco Health Solutions, Inc.) - 257, 308, 311, 312
- C. (Accredo Health Group, Inc.) - 213, 214, 216, 218,
- D. (Express Scripts Pharmacy, Inc.) - 247, 233, 235

*Inactive or disposed entities included in HFM



Cigna Corporation Subsidiaries and Affiliates Post-Closing Organization Chart



Oracle Company Footnotes

The entities below include the following oracle codes:

- A. (Express Scripts, Inc.) - 101, 150, 151
- B. (Medco Health Solutions, Inc.) - 257, 308, 311, 312
- C. (Accredo Health Group, Inc.) - 213, 214, 216, 218, 219, 319
- D. (Express Scripts Pharmacy, Inc.) - 247, 233, 235

*Inactive or disposed entities included in HFM