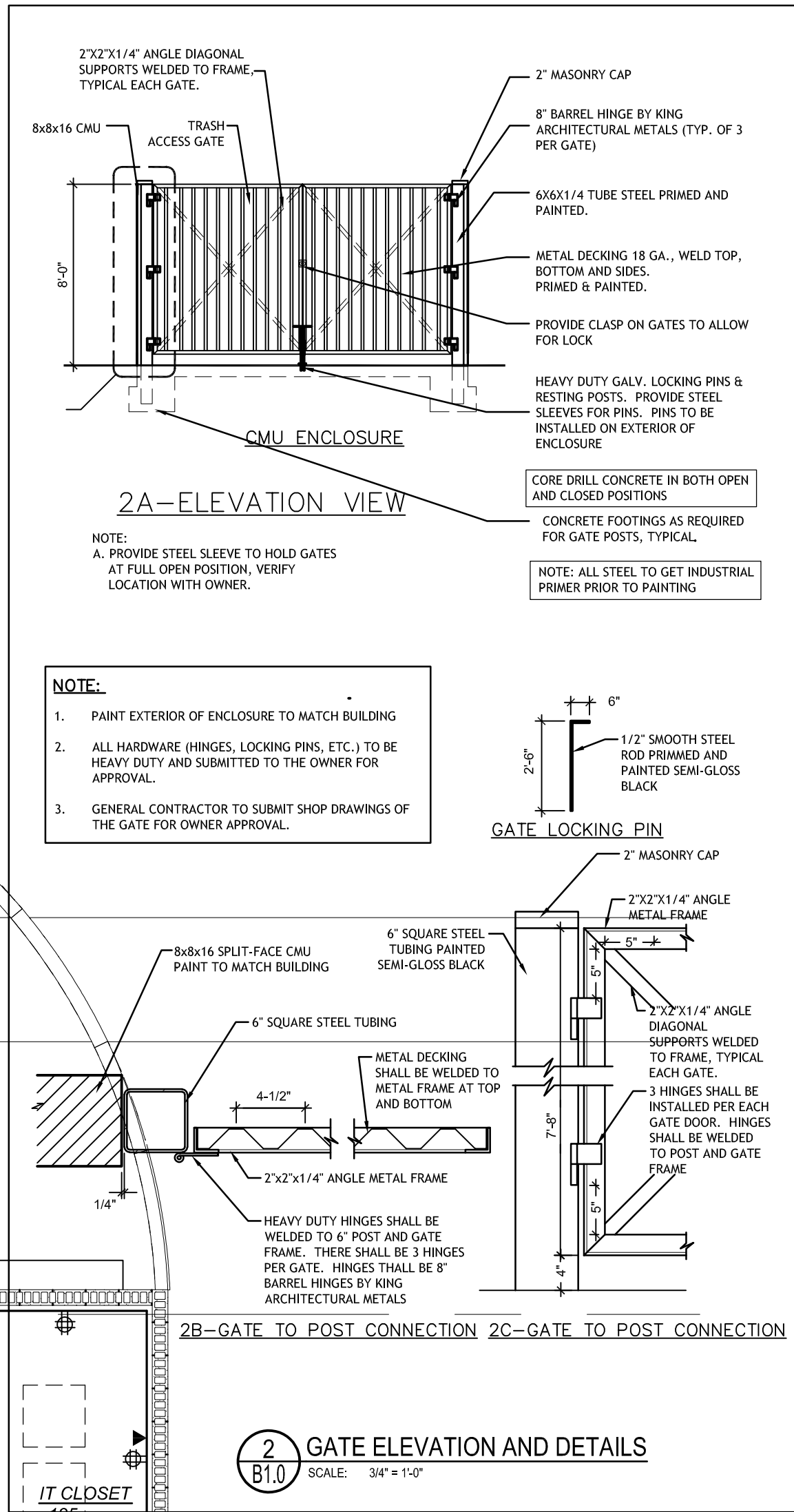
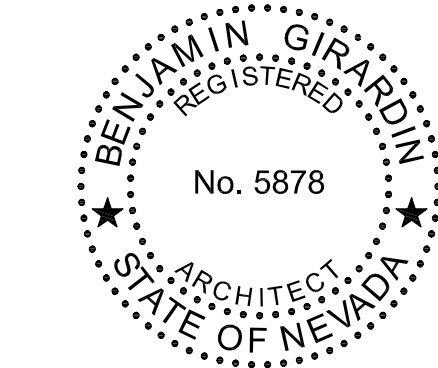


WALL LEGEND

A WALL TYPE - ALL WALL TYPES ARE TYPE A UNLESS NOTED OTHERWISE - SEE SHEET B2.1

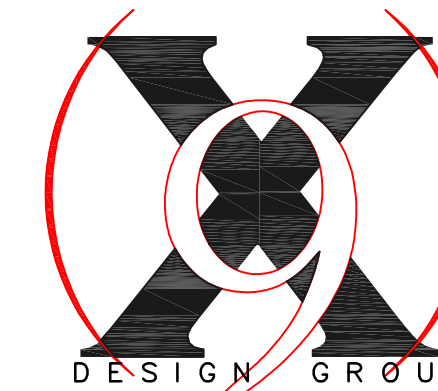


Key Plan



Issued For: Dispatch V3 Date: 04.24.2018

Drawn: B.J.G.
Checked: B.J.G.
Approved: B.J.G.



801 Las Vegas Blvd. South #150
Las Vegas, Nevada 89101
P.(702) 870-7076

Project Title

UNLV Police Station
Tenant Improvements
1280 Dorothy Ave.
Las Vegas, NV 89119

Sheet Title

Floor Plan

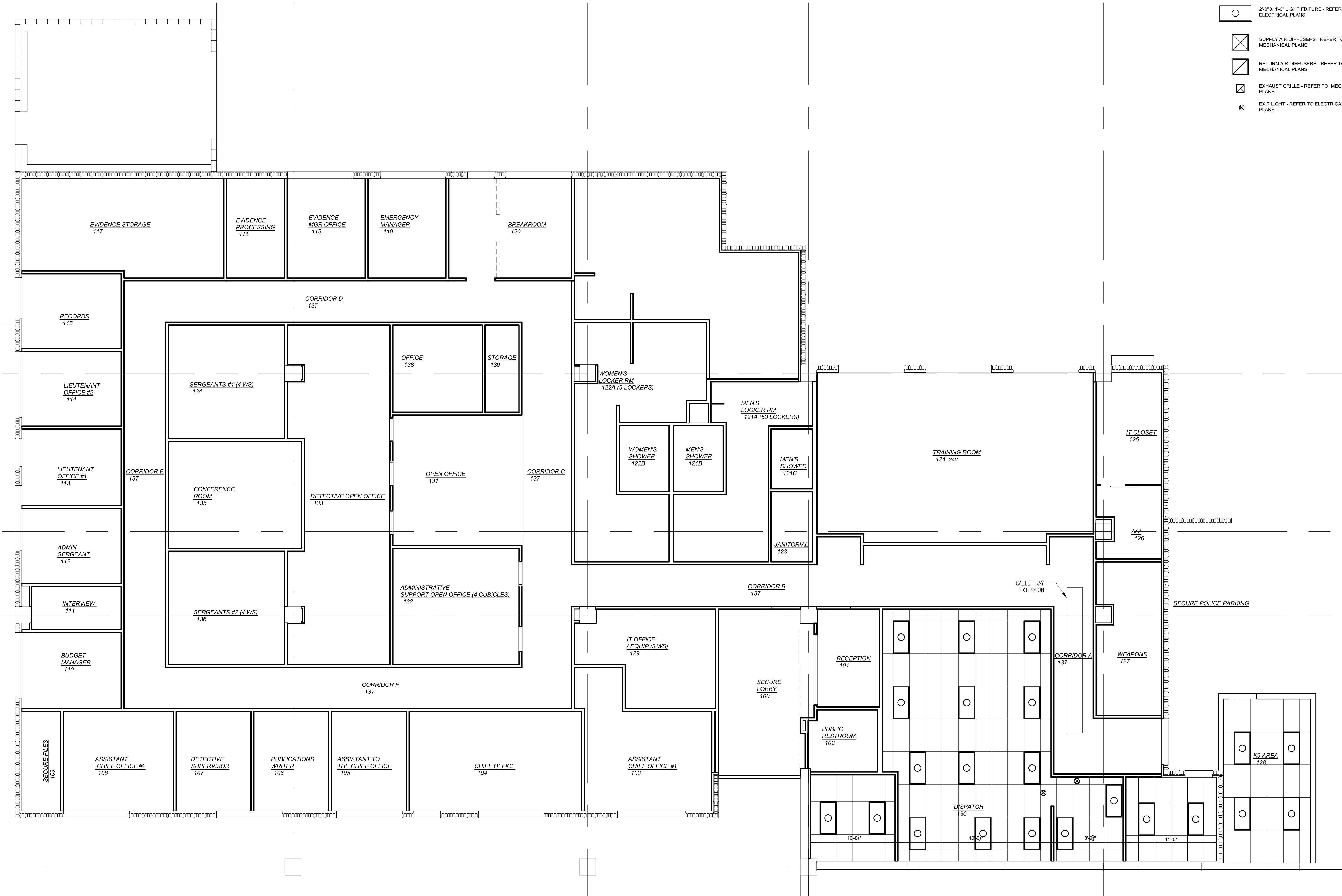
Project Number

217-0019

Sheet Number

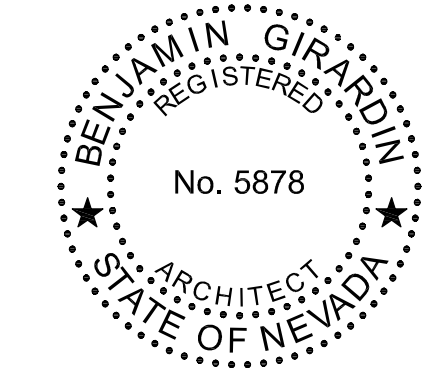
B1.0

V3 FLOOR PLAN
SCALE: 3/16" = 1'-0"



- CEILING LEGEND**
- 2'-0" X 4'-0" CEILING TILE - SEE 2/B2.1
 - 2'-0" X 4'-0" LIGHT FIXTURE - REFER TO ELECTRICAL PLANS
 - SUPPLY AIR DIFFUSERS - REFER TO MECHANICAL PLANS
 - RETURN AIR DIFFUSERS - REFER TO MECHANICAL PLANS
 - EXHAUST GRILLE - REFER TO MECHAICAL PLANS
 - EXIT LIGHT - REFER TO ELECTRICAL PLANS

Key Plan



Issued For: Dispatch V3
Date: 04.24.2018

Drawn: B.J.G.
Checked: B.J.G.
Approved: B.J.G.



Project Title

UNLV Police Station
Tenant Improvements
1280 Dorothy Ave.
Las Vegas, NV 89119

Sheet Title

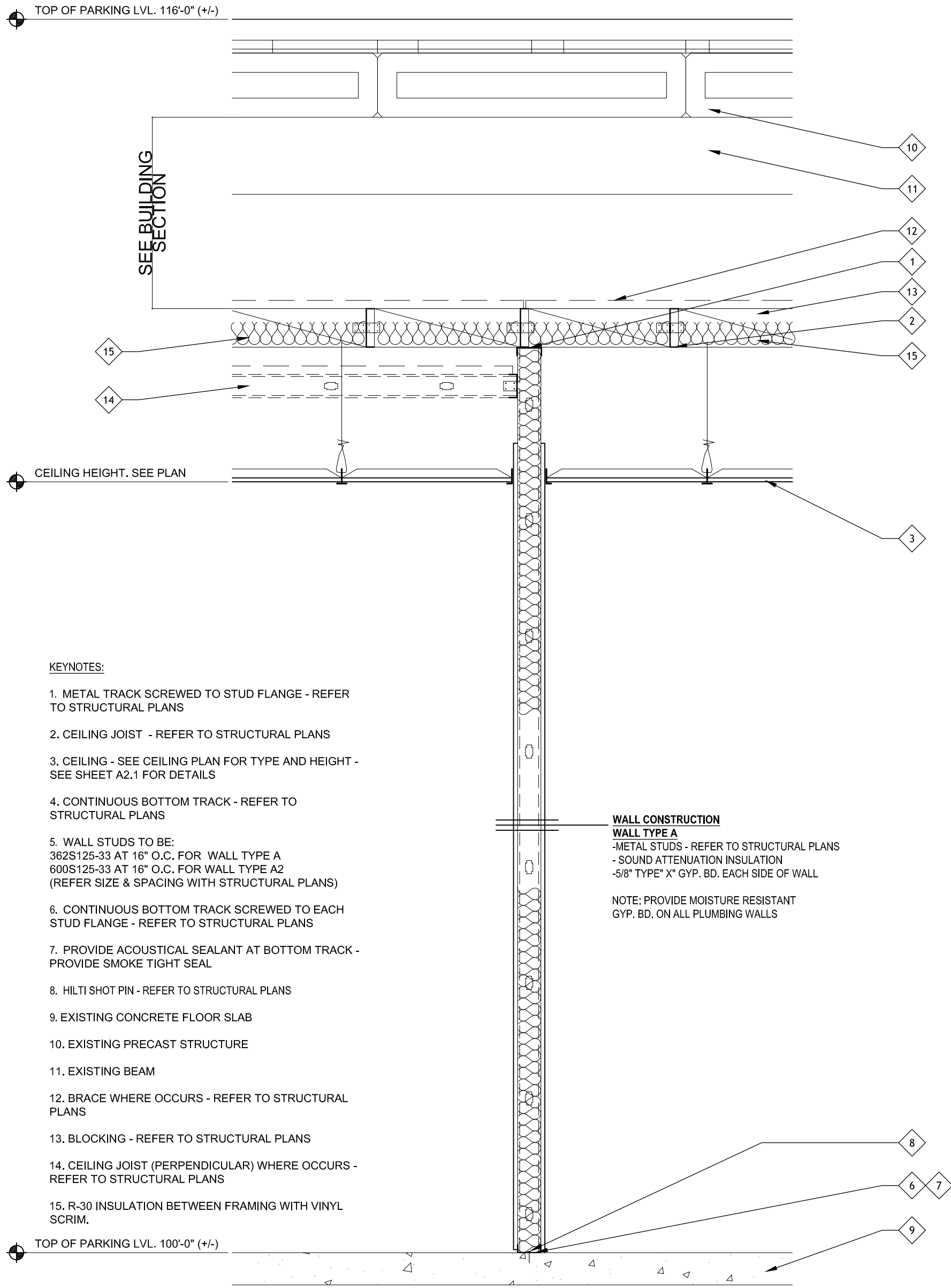
Ceiling plan

Project Number

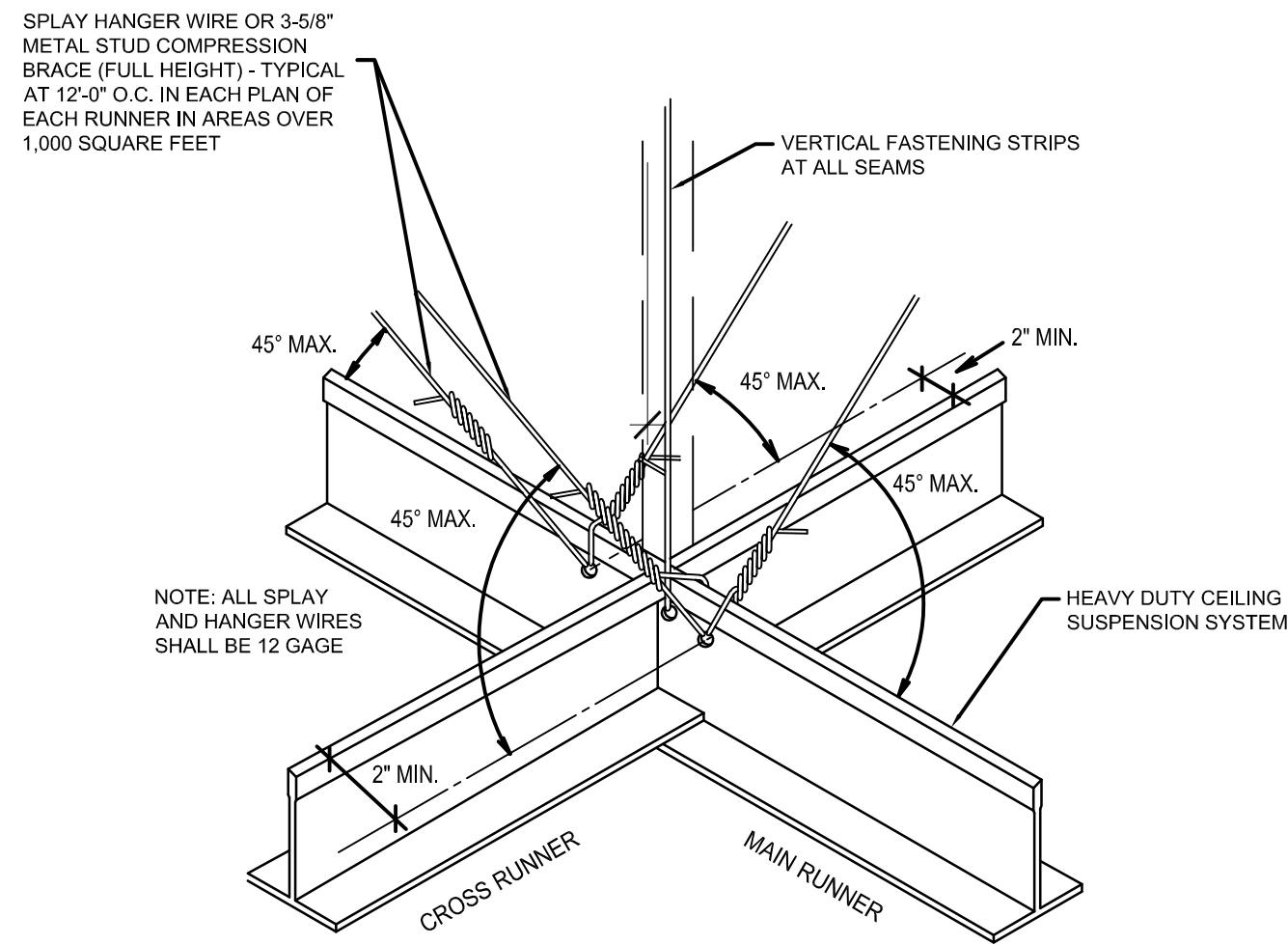
217-0019

Sheet Number

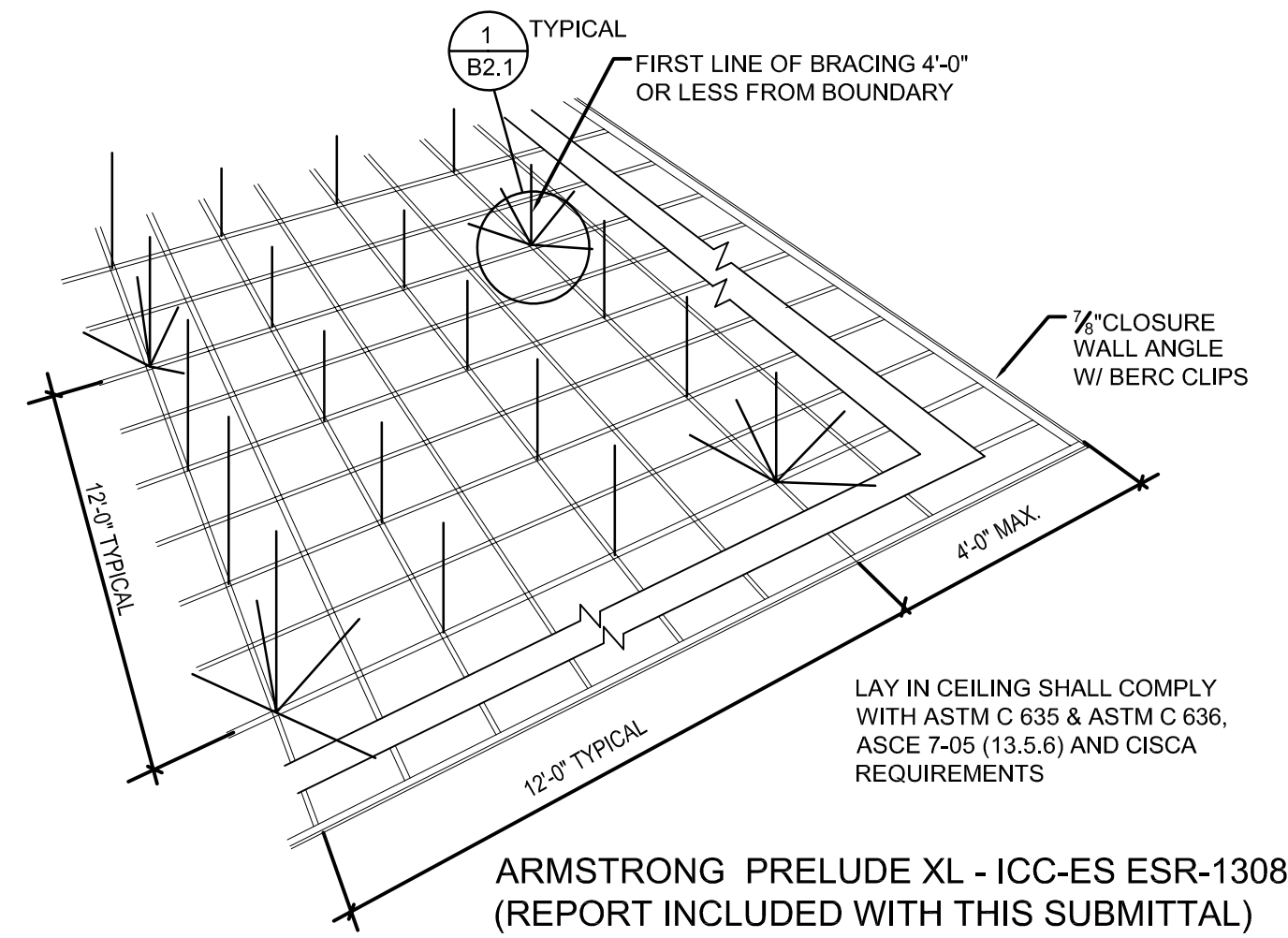
B2.0



3 WALL SECTION - WALL TYPE A
3/4" = 1'-0"

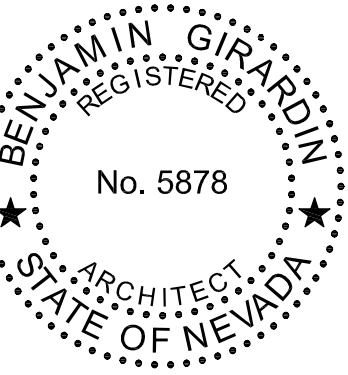


1 SEISMIC BRACING DETAIL
B2.1 SCALE: NONE



2 CEILING SUSPENSION SYSTEM DETAIL
B2.1 SCALE: NONE

Key Plan



Issued For:

Date:

Dispatch V3

04.24.2018

Drawn

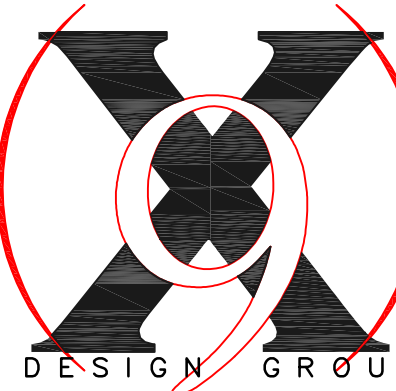
BJG

Checked

BJG

Approved

BJG



801 Las Vegas Blvd. South #150
Las Vegas, Nevada 89101
P.(702) 870-7076

Project Title

UNLV Police Station
Tenant Improvements
1280 Dorothy Ave.
Las Vegas, NV 89119

Sheet Title

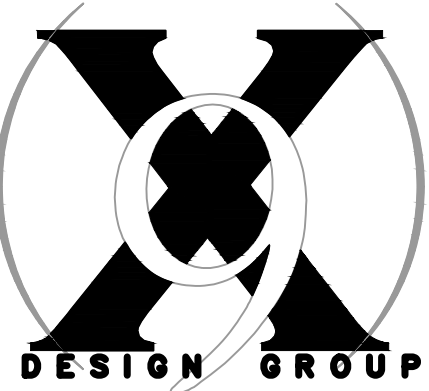
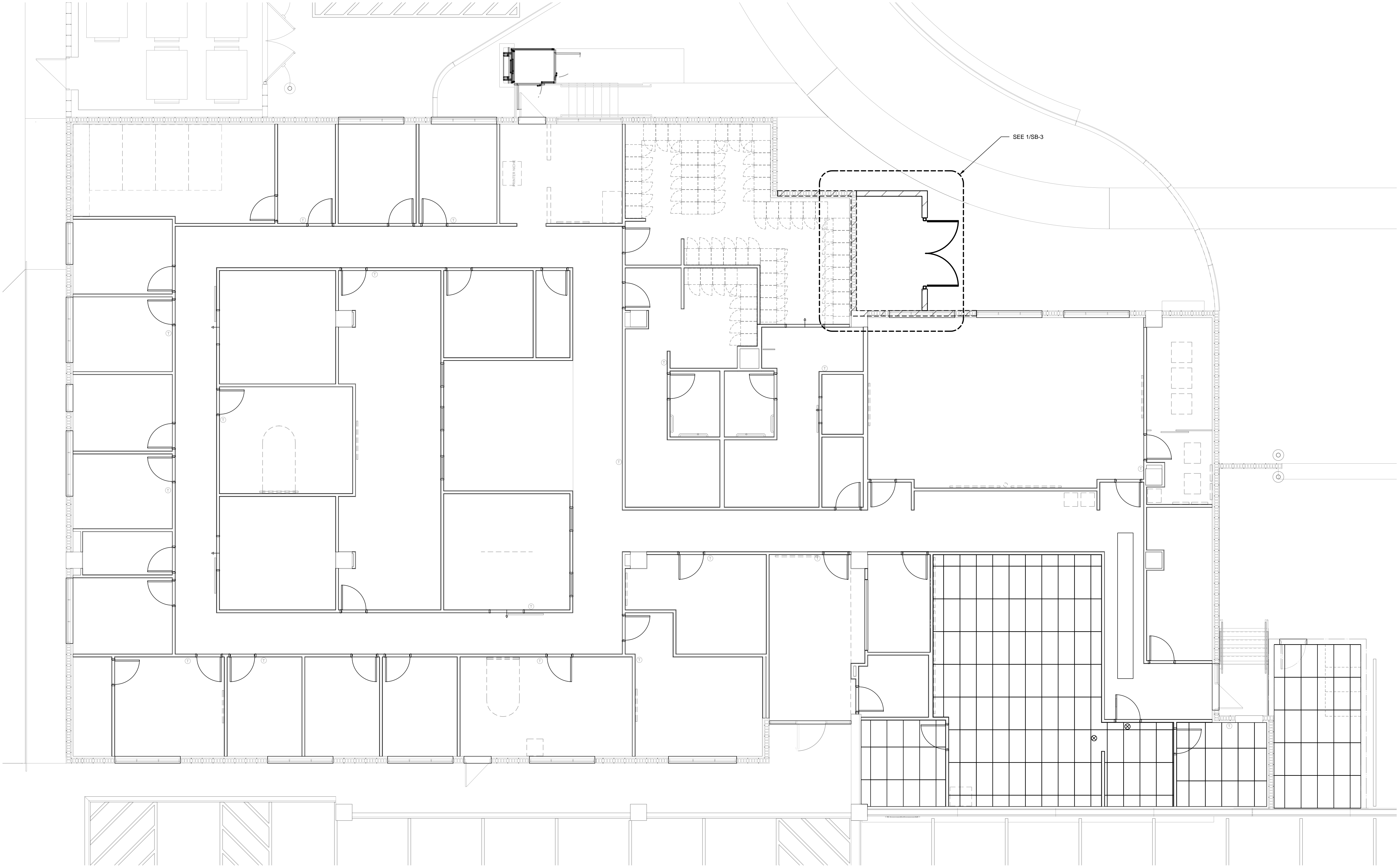
Ceiling Details

Project Number

217-0019

Sheet Number

B2.1



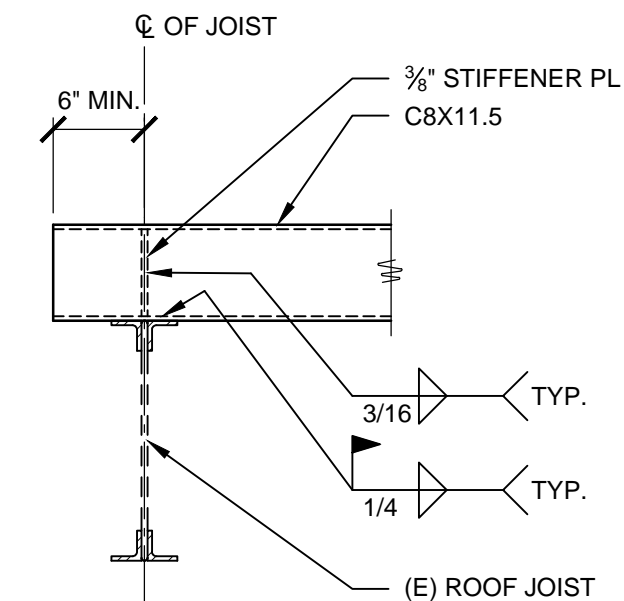
801 Las Vegas Blvd. South #150
Las Vegas, Nevada 89101
P.(702) 870-7076

UNLV Police Station
Tenant Improvements
1280 Dorothy Ave.
Las Vegas, NV 89119

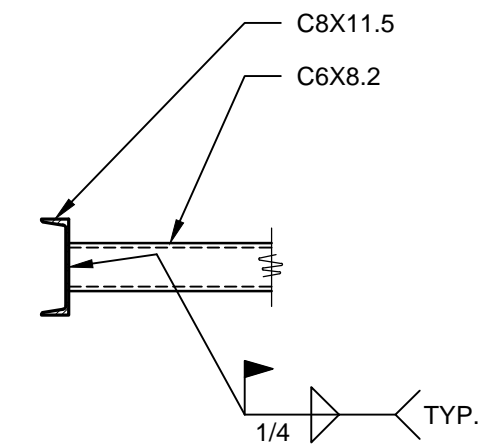
PLAN

217-0019

SB-1



2 DETAIL
SCALE: 3/4" = 1'-0"



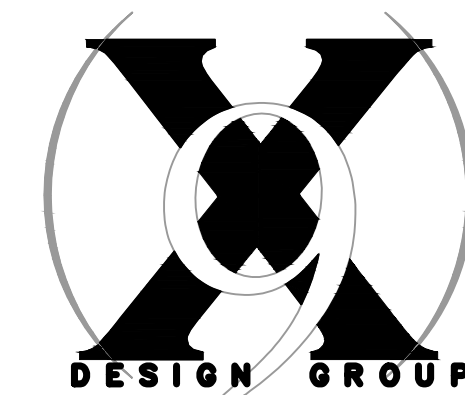
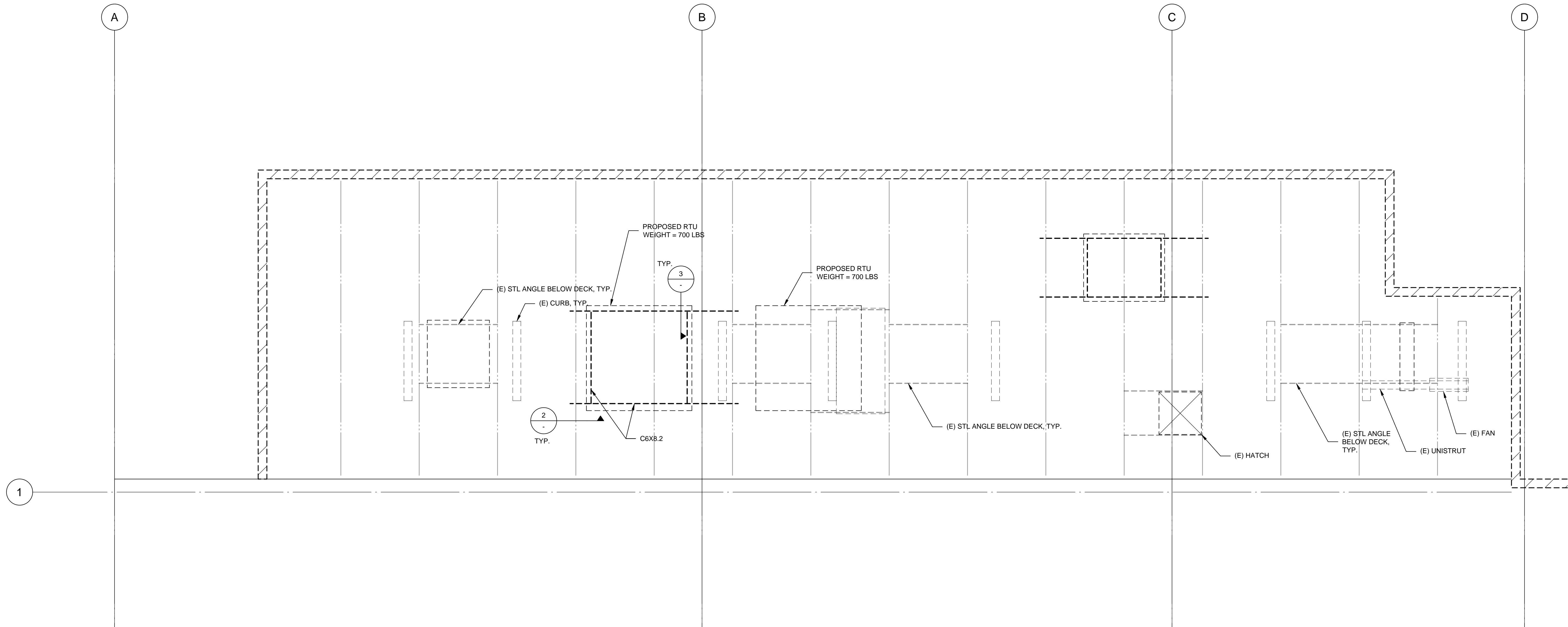
3 DETAIL
SCALE: 3/4" = 1'-0"

Issued For: _____ Date: _____

Drawn: _____

Checked: _____

Approved: _____



801 Las Vegas Blvd. South #150
Las Vegas, Nevada 89101
P.(702) 870-7076

Project Title

UNLV Police Station
Tenant Improvements
1280 Dorothy Ave.
Las Vegas, NV 89119

Sheet Title

**PLAN &
DETAILS**

Project Number

217-0019

Sheet Number

SB-2

1 MECHANICAL ROOF TOP UNIT PLAN
SCALE: 1/4" = 1'-0"

STRUCTURAL GENERAL NOTES

GENERAL

- ALL WORK SHALL CONFORM TO THE MINIMUM STANDARDS OF THE FOLLOWING CODES:
THE 2012 EDITION OF INTERNATIONAL BUILDING CODE, AND OTHER REGULATING AGENCIES WHICH HAVE AUTHORITY OVER ANY PORTION OF THE WORK, AND THOSE CODES AND STANDARDS LISTED IN THESE NOTES AND IN THE PROJECT SPECIFICATIONS. THE CONTRACTOR SHALL VERIFY ALL DIMENSIONS PRIOR TO STARTING CONSTRUCTION. THE ARCHITECT SHALL BE NOTIFIED OF ANY DISCREPANCIES OR INCONSISTENCIES.
- DO NOT SCALE THE DRAWINGS.
- DESIGN LOADS:
 - SEISMIC LOADS:
 - THE MAPPED SPECTRA ACCELERATION: $S_s = 0.463g$
 - THE MAPPED SPECTRA ACCELERATION: $S_1 = 0.159g$
 - IMPORTANCE FACTOR: $I_e = 1.0$
 - RISK CATEGORY: II
 - SITE CLASS: D
 - SPECTRAL RESPONSE ACCELERATIONS: $SDS = 0.442g$
 $SD1 = 0.229g$
 - SEISMIC DESIGN CATEGORY: D
 - BASIC SEISMIC-FORCE-RESISTING SYSTEM: N/A
 - DESIGN BASE SHEAR COEFFICIENT: $CS: N/A$
 - RESPONSE MODIFICATION FACTOR: $R: N/A$
 - ANALYSIS PROCEDURE: N/A
- WIND LOADS:
 - BASIC WIND SPEED = 115 MPH (3 SECOND GUST)
 - EXPOSURE: B
 - RISK CATEGORY: II

FOUNDATION

- FOOTINGS ARE DESIGNED BASED ON AN ALLOWABLE SOIL PRESSURE OF 1000 PSF

CONCRETE

- ALL CONCRETE SHALL BE NORMAL WEIGHT USING HARDROCK AGGREGATES CONFORMING TO ASTM C33.
 - MINIMUM 28 DAY STRENGTH: 4500 PSI
 - FOOTINGS: 4500 PSI
 - SLAB ON GRADE: 4500 PSI
 - MAX WATER CEMENT RATIO: 0.45
 - CONCRETE SLUMP: 4 INCHES
 - CEMENT TYPE: V

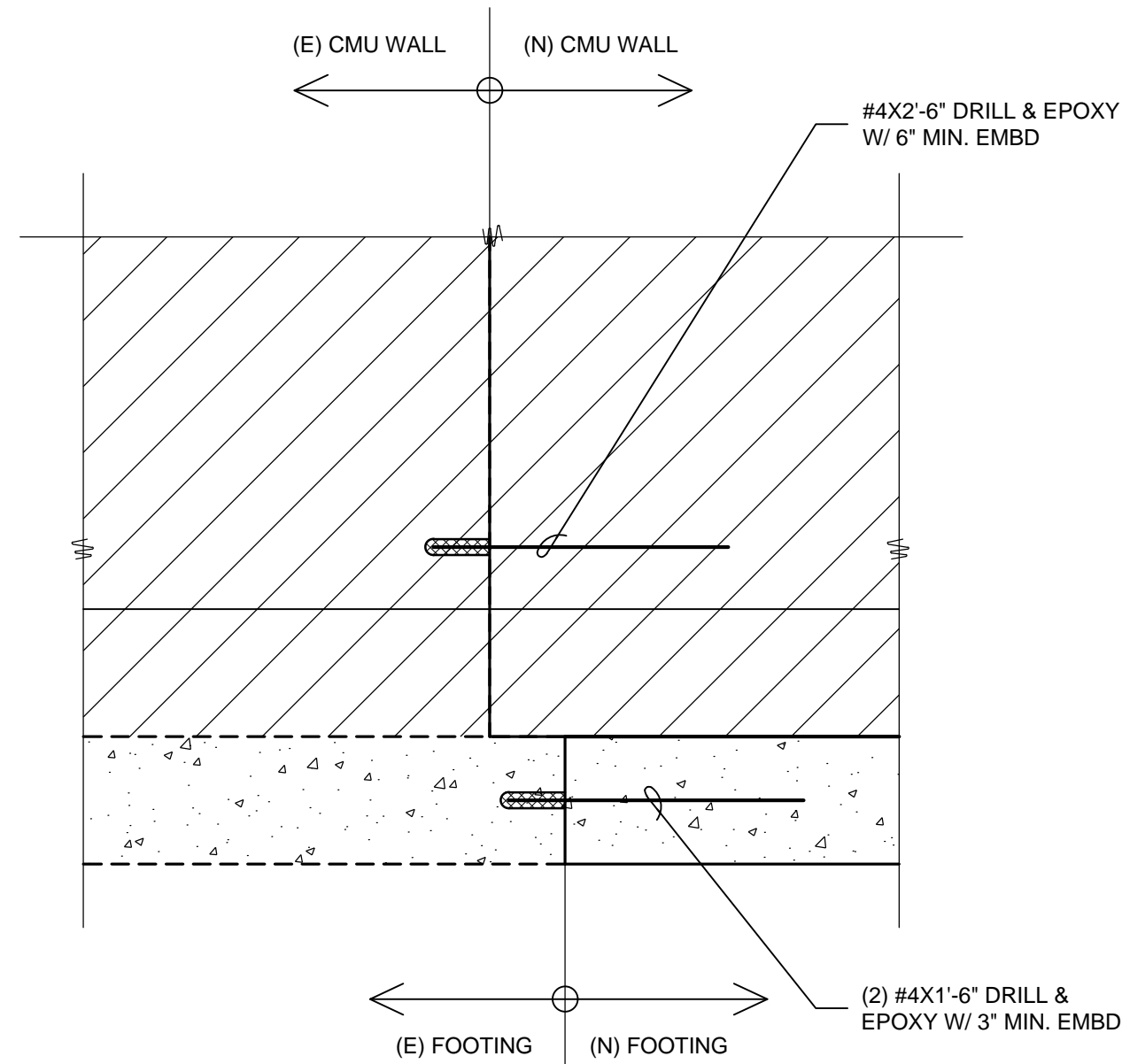
DESIGNS ARE BASED ON 2500 PSI CONCRETE STRENGTH, HENCE NO SPECIAL INSPECTION IS REQUIRED.

MASONRY

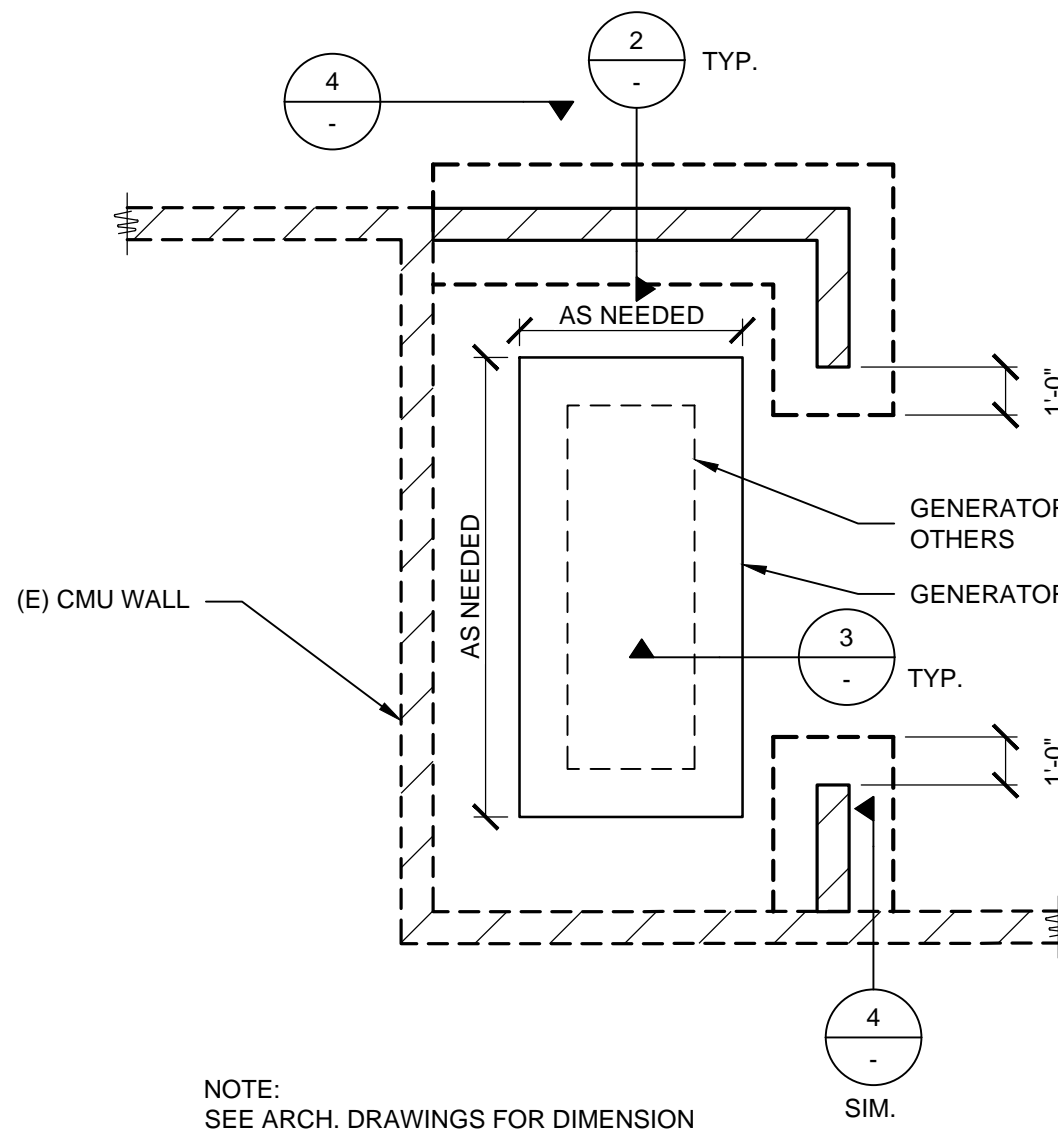
- STRUCTURAL CONCRETE MASONRY, AS SHOWN ON THESE DRAWINGS, SHALL HAVE A COMPRESSIVE STRENGTH (F_m) OF 1500 PSI.
- MASONRY UNITS SHALL CONFORM TO ASTM C90, TYPE II, NORMAL WEIGHT, HOLLOW UNLESS SPECIFICALLY NOTED OTHERWISE ON THESE DRAWINGS, WITH A UNIT STRENGTH AS REQUIRED TO ACHIEVE COMPRESSIVE STRENGTH SPECIFIED ABOVE.
- REINFORCING BARS - SEE NOTES UNDER 'REINFORCING STEEL' FOR REQUIREMENTS. ASTM A615, GRADE 60, UNLESS NOTED OTHERWISE.
- MORTAR MIX SHALL CONFORM TO REQUIREMENTS FOR IBC TABLE 2103.8(1), TYPE S, AND PROJECT SPECIFICATIONS. MORTAR SHALL ATTAIN A MINIMUM COMPRESSIVE STRENGTH OF 1800 PSI AT 28 DAYS.
- GROUT SHALL CONFORM TO REQUIREMENTS OF SECTION 2103 OF IBC FOR COARSE GROUT. USE SUFFICIENT WATER FOR GROUT TO FLOW INTO ALL JOINTS OF THE MASONRY WITHOUT SEGREGATION. GROUT SHALL ATTAIN A MINIMUM COMPRESSIVE STRENGTH OF 2000 PSI AT 28 DAYS. FLY ASH WILL NOT BE PERMITTED IN GROUT.

SPECIAL INSPECTION

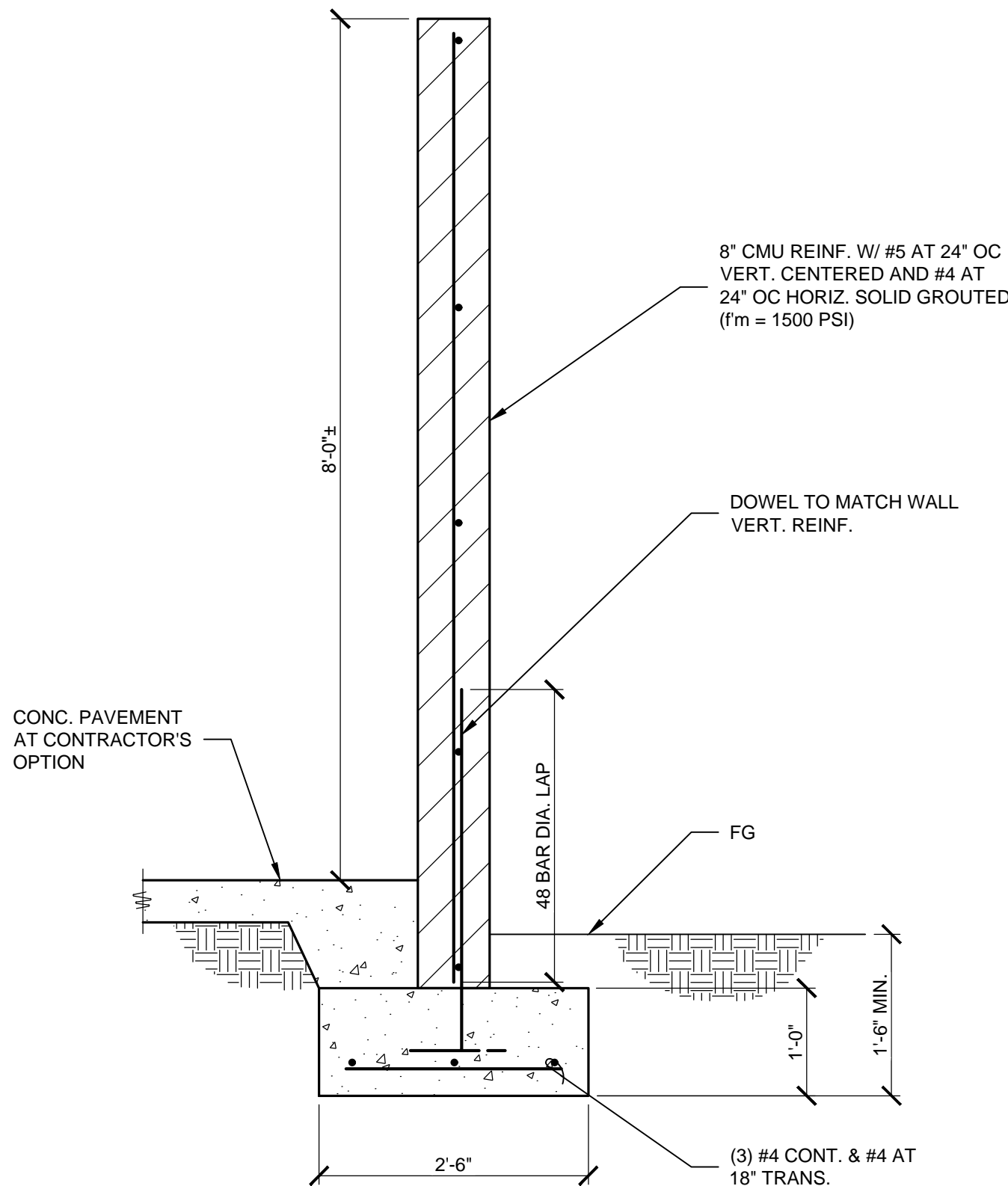
- SPECIAL INSPECTION SHALL BE REQUIRED FOR THE FOLLOWING TYPES OF WORK:
 - SIMPSON TITEN HD SCREW FOR CONCRETE PER ESR-2713
 - EPOXY FOR CONCRETE (USE HILTI HIT-RE 500-SD PER ESR-2322 OR SIMPSON SET XP PER ESR-2508)
 - EPOXY FOR MASONRY (USE HILTI HIT-HY 150 MAX PER ESR-1967 OR SIMPSON SET PER



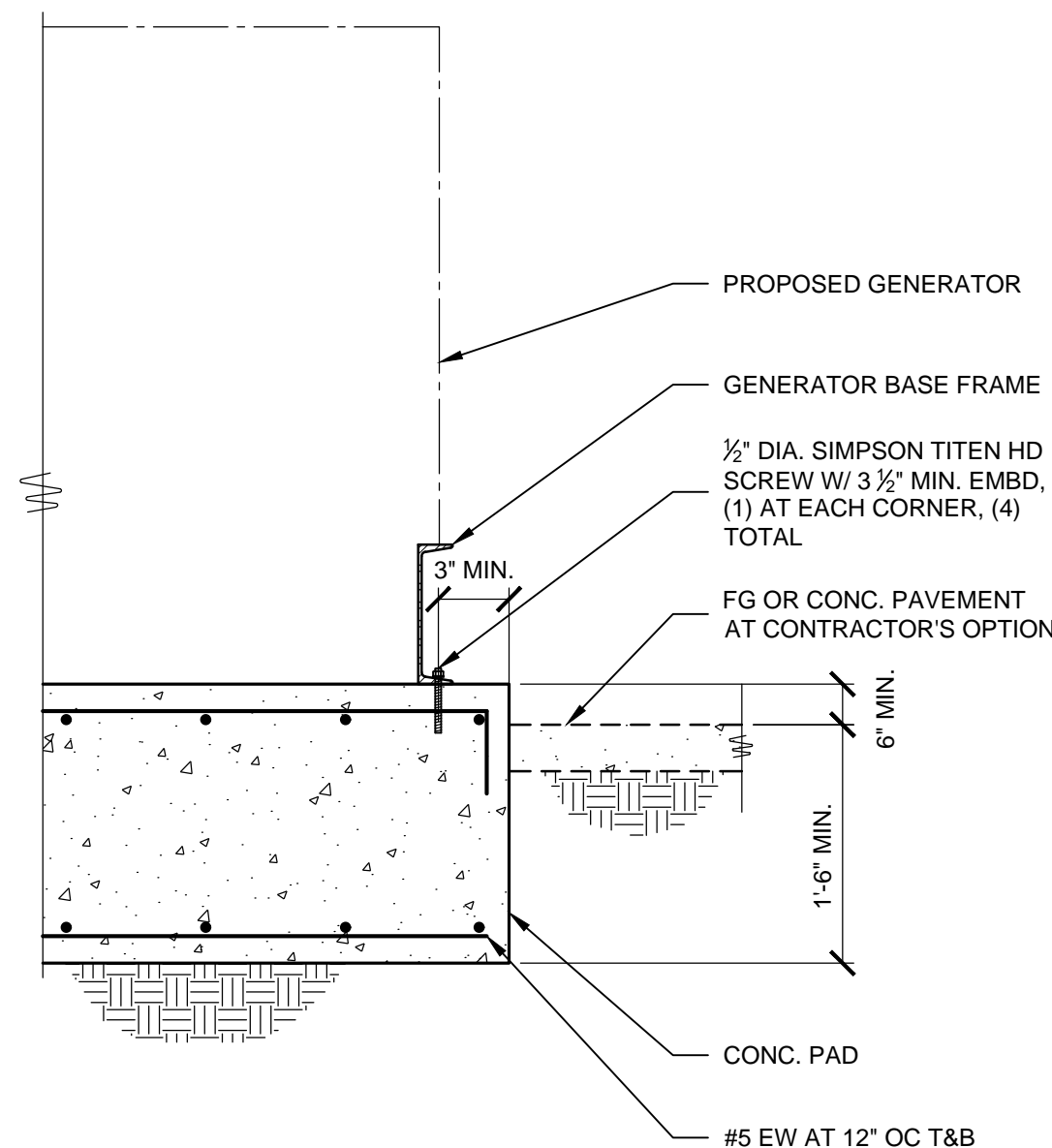
4 SECTION
SCALE: 3/4" = 1'-0"



1 GENERATOR PAD & CMU ENCLOSURE PLAN
1/4" = 1'-0"



2 CMU WALL SECTION
SCALE: 3/4" = 1'-0"



3 GENERATOR ANCHORAGE DETAIL
SCALE: 3/4" = 1'-0"



Project Title

UNLV Police Station
Tenant Improvements
1280 Dorothy Ave.
Las Vegas, NV 89119

Sheet Title

DETAILS

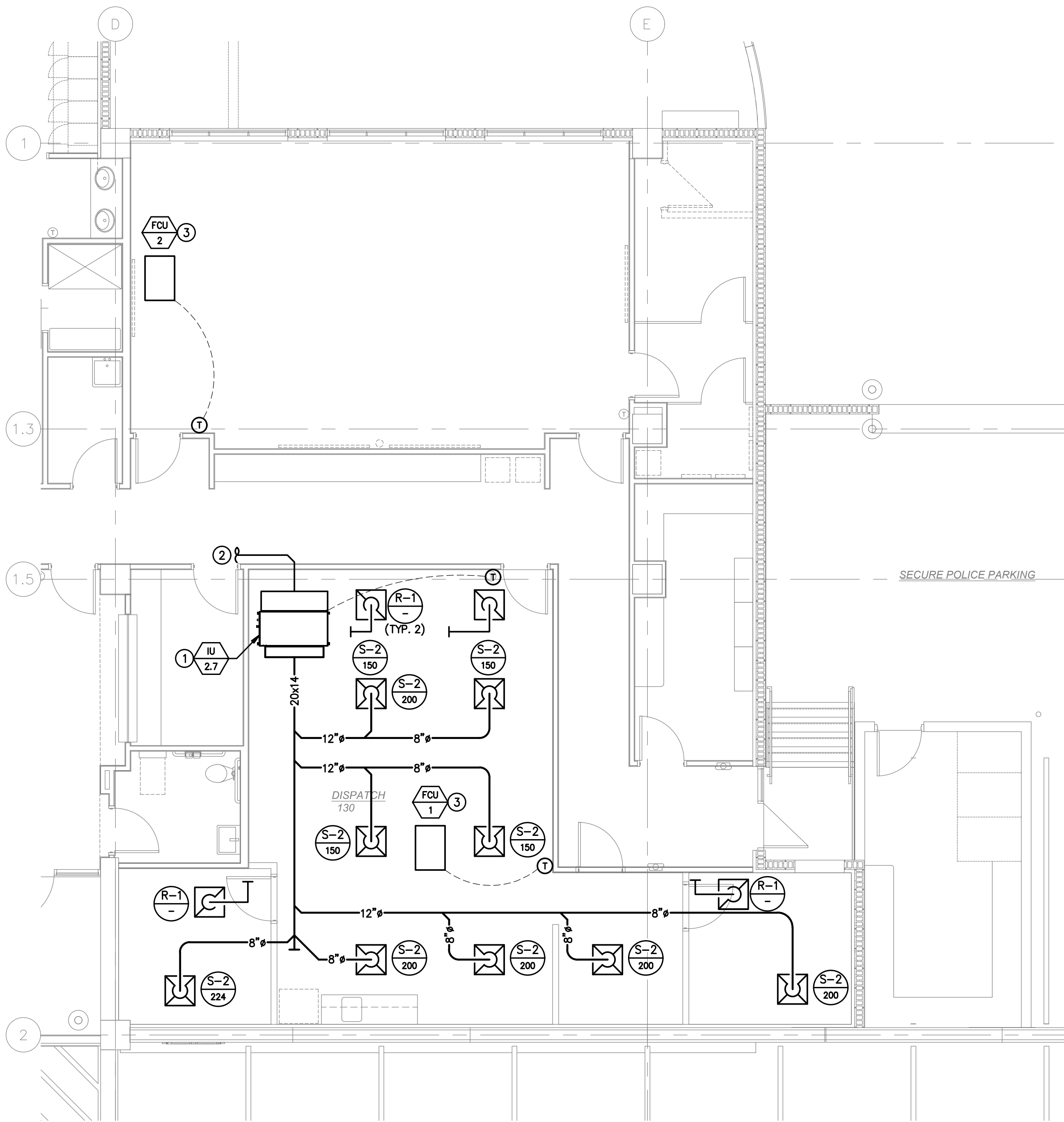
Project Number

217-0019

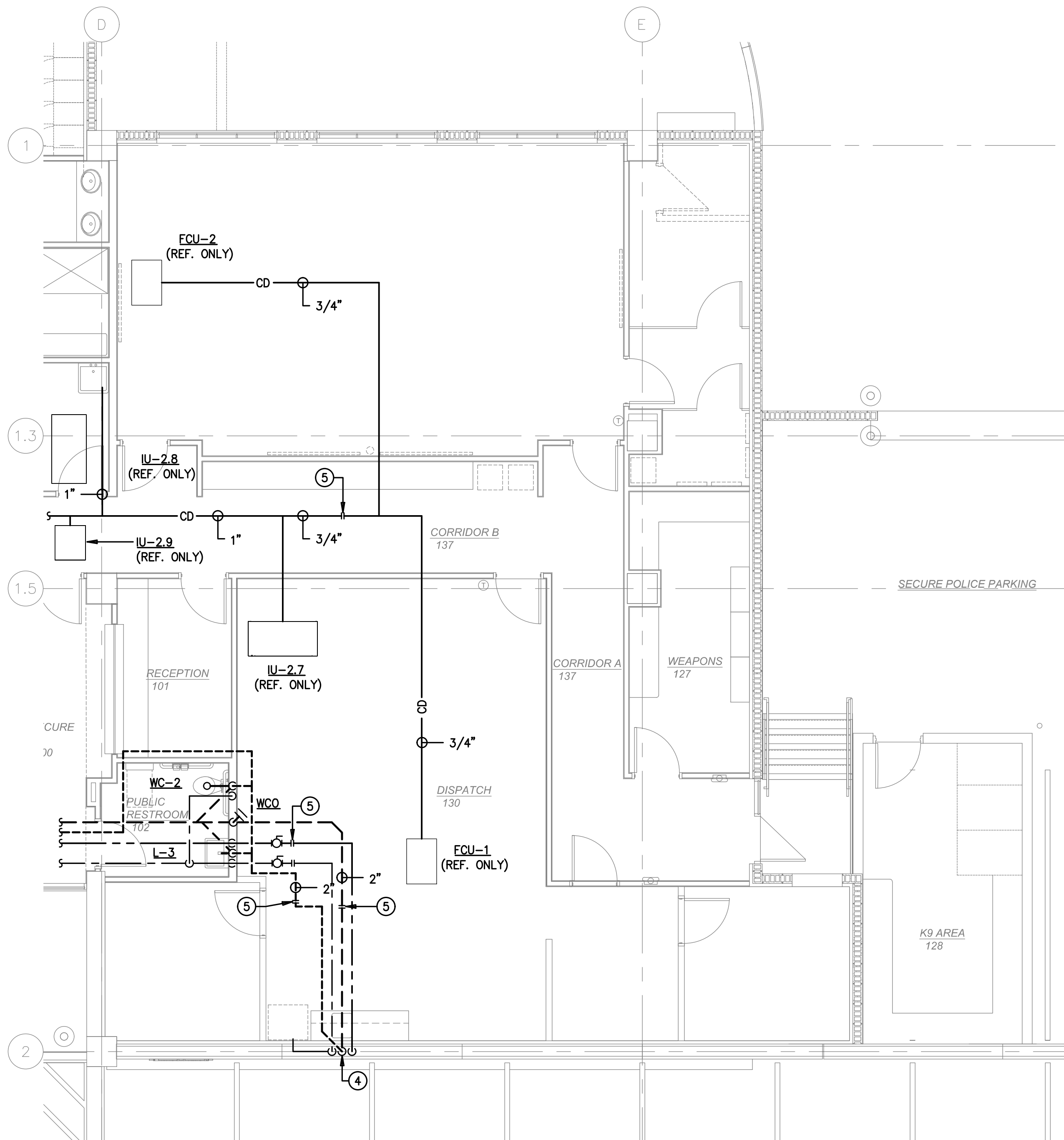
Sheet Number

SB-3

MPB1.0.dwg / MPB1.0 - 04/19/2018 - 1:46pm - B24.dwg / 217-0019 xbase - ALTERNATIVE.dwg



PARTIAL FLOOR PLAN - MECHANICAL
SCALE: 3/16" = 1'-0"



PARTIAL FLOOR PLAN - PLUMBING
SCALE: 3/16" = 1'-0"

SPLIT SYSTEM PRECISION A/C UNIT UNIT SCHEDULE

FAN COIL UNIT													OUTDOOR AIR-COOLED CONDENSING UNIT										COOLING CAPACITY					NOTES		
TAG	MANUFACT. & MODEL # OR EQUAL	S/A CFM	O/A CFM	WEIGHT (LBS)	FAN					ELEC REHEAT		MCA	MOCP	MARK	MANUFACT. & MODEL # OR EQUAL	WEIGHT (LBS)	V	PH	COMPRESSOR(S)		CONDENSER FANS		MCA	MOCP	MIN SEER	TOTAL (MBH)	SENSIBLE (MBH)		F.A.T. DB/WB	AMB. TEMP (F)
					HP	V	PH	FLA	E.S.P. (W.G.)	KW	FLA								QTY	RLA (EA)	QTY	FLA (EA)								
FCU 1	DATA AIRE DAPA-0332-AO	1,200	-	450	1-1/2	208	3	4.8	-	6	-	26.9	30	ACCU 1	DATA AIRE DRCU-1132-3	700	208	3	1	16	2	3.6	27.2	40	-	36.5	26.6	80/67	115	1
FCU 2	DATA AIRE DAPA-0332-AO	1,200	-	450	1-1/2	208	3	4.8	-	6	-	26.9	30	ACCU 2	DATA AIRE DRCU-1132-3	700	208	3	1	16	2	3.6	27.2	40	-	36.5	26.6	80/67	115	1

NOTES: 1. WITH FOLLOWING: HIGH EFFICIENCY BLOWER MOTOR, MERV 8 FILTERS, LIQUID LINE SOLENOID VALVE, VERTICAL DISCHARGE PLENUM, MINI DAP4 WITH UNIT MOUNTED SENSORS, 35' OF DAP4 DISPLAY CABLE, R-410A REFRIGERANT AND "OPT-5431" EVAPORATOR COIL

KEYNOTES

- FULL SIZE SUPPLY AND RETURN PLENUMS WITH 1" ACOUSTICAL LINER. PROVIDE ALL REQUIRED TRANSITIONS AND FLEXIBLE DUCT CONNECTIONS AT DUCT FLANGES.
- CONNECT 6"Ø OUTSIDE AIR DUCT TO CAPPED DUCT IN BASE BID. REFER TO SHEET M1.0 FOR CONNECTION LOCATION.
- SUSPEND FCU PER MANUFACTURER'S REQUIREMENTS. PROVIDE AND INSTALL "ACR" REFRIGERANT PIPING, SIZED PER EQUIPMENT MANUFACTURER'S REQUIREMENTS WITH ALL REQUIRED APPURTENANCES AND SPECIALTIES. EXTEND REFRIGERANT PIPING TO CORRESPONDING ROOFTOP MOUNTED AIR-COOLED CONDENSING UNIT. LOCATE AIR-COOLED CONDENSING UNITS ON ROOF ADJACENT TO OU-1 AND OU-2. REFER TO SHEET MB3.0 FOR APPROXIMATE LOCATION.
- 2" W DOWN, 2" V UP AND 1/2" HW/CW DOWN IN WALL TO HAND SINK, PROVIDE THERMOSTATIC MIXING VALVE - WILKINS: MODEL ZW387OT PRIOR TO FINAL HW CONNECTION. TEE-OFF 1/2" CW FOR CONNECTION TO REFRIGERATOR.
- CONNECT TO CAPPED PIPING IN BASE BID. REFER TO SHEET P1.0

Key Plan:

Issued For: Dispatch V3
Date: 04.18.2018

Drawn: NF/DP
Checked: RK
Approved: RK

TURPIN & RATTAN
ENGINEERING, INC.
MECHANICAL ENGINEERS
8888 W. SUNSET RD. SUITE 801
LAS VEGAS, NEVADA 89118
702 / 884 / 8882
TREI # 17324



801 Las Vegas Blvd. South #150
Las Vegas, Nevada 89101
P.(702) 870-7076

Project Title

UNLV Police Station
Tenant Improvements
1280 Dorothy Ave.
Las Vegas, NV 89119

Sheet Title

Partial Floor Plan
Mechanical & Plumbing
Additive Alternate

Project Number

217-0019

Sheet Number

MPB1.0

MB3.0.dwg / M3.0 - 04/19/2018 - 1:47pm - B24.dwg / A3-0 - ROOF PLANS.DWG


Key Plan:

KEYNOTES

- ① OUTDOOR UNIT ON ROOF PER STRUCTURAL DRAWINGS. REFER TO ARCHITECTURAL PLAN FOR EXACT LOCATION. INSTALL PER MANUFACTURERS RECOMMENDATION AND REQUIREMENTS. ROUTE REFRIGERANT LINES TO CORRESPONDING INDOOR UNITS. INSTALL AND SIZE PER MANUFACTURERS REQUIREMENTS AND RECOMMENDATIONS.
- ② EXISTING INTAKE ROOF HOOD.

Issued For: Dispatch V3
Date: 04.18.2018

Drawn: JC
Checked: RK
Approved: RK

**TURPIN & RATTAN**
ENGINEERING, INC.
MECHANICAL ENGINEERS
8888 W. SUNSET RD, SUITE 801
LAS VEGAS, NEVADA 89118
702 / 884 / 8880
TREI # 17324



**X**
DESIGN GROUP
801 Las Vegas Blvd. South #150
Las Vegas, Nevada 89101
P.(702) 870-7076

Project Title

UNLV Police Station
Tenant Improvements
1280 Dorothy Ave.
Las Vegas, NV 89119

Sheet Title

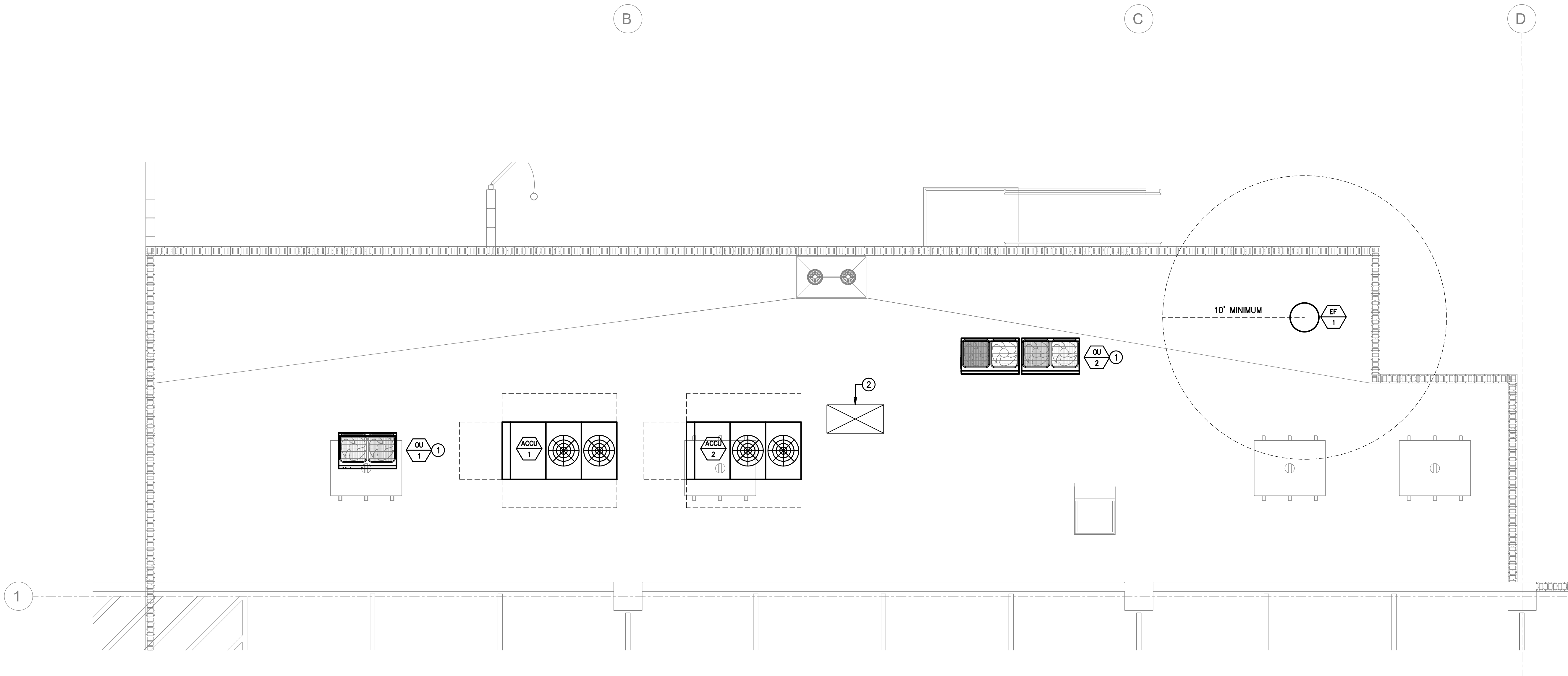
Roof Plan
MECHANICAL

Project Number

217-0019

Sheet Number

MB3.0



 **ROOF PLAN - MECHANICAL**
SCALE: 1/4" = 1'-0"

ELECTRICAL GENERAL NOTES

1. THE DRAWINGS REPRESENT THE GENERAL ARRANGEMENT AND LOCATIONS OF THE ELECTRICAL WORK. DATA PRESENTED ON THESE DRAWINGS ARE AS ACCURATE AS PLANNING CAN DETERMINE, BUT FIELD VERIFICATION OF ALL DIMENSIONS, LOCATIONS, LEVELS, ETC., TO SUIT FIELD CONDITIONS IS REQUIRED.

2. REVIEW ALL ARCHITECTURAL, STRUCTURAL, AND MECHANICAL DRAWINGS AND ADJUST ALL WORK TO MEET THE REQUIREMENTS OF CONDITIONS SHOWN. THE ARCHITECTURAL DRAWINGS SHALL TAKE PRECEDENCE OVER ALL OTHER DRAWINGS. DISCREPANCIES BETWEEN DIFFERENT PLANS, OR BETWEEN DRAWINGS AND OR REGULATIONS AND CODES GOVERNING THE INSTALLATION SHALL BE BROUGHT TO THE ATTENTION OF THE ENGINEER IN WRITING BEFORE THE DATE OF BID OPENING. IF DISCREPANCIES ARE NOT REPORTED, THE CONTRACTOR SHALL BID THE GREATER QUANTITY OR BETTER QUALITY, AND APPROPRIATE ADJUSTMENTS WILL BE MADE AFTER CONTRACT AWARD.

3. THE DRAWINGS DO NOT INDICATE THE ACTUAL METHOD OF CONSTRUCTION. THE CONTRACTOR SHALL BE SOLELY RESPONSIBLE FOR SUPERVISING AND DIRECTING ALL CONSTRUCTION WORK, MEANS, METHODS, TECHNIQUES, AND SEQUENCES.

4. ALL EXISTING JOB SITE CONDITIONS, DIMENSIONS, AND SERVICE REQUIREMENTS SHALL BE VERIFIED BY THE CONTRACTOR BEFORE START OF CONSTRUCTION AND/OR FABRICATION OF MATERIALS. ANY DISCREPANCIES ENCOUNTERED SHALL BE IMMEDIATELY BROUGHT TO THE ATTENTION OF THE ENGINEER OF RECORD FOR CLARIFICATION.

5. CONTRACTOR TO ADJUST LOCATIONS OF WALL OUTLETS BOXES SHOWN ON DRAWINGS FOR RECEPTACLES, SWITCHES, AND FIRE ALARM DEVICES, ETC. TO ACCOMMODATE FURNITURE, SHELVING AND STACKING AS SHOWN ON THE ARCHITECTURAL DRAWINGS. IN ALL CASES, SWITCHES CONTROLLING LIGHTING ARE TO BE LOCATED ON THE STRIKE SIDE OF DOORS. LOCATION INDICATED FOR SWITCHES AND OUTLETS ARE APPROXIMATE. OWNER MAY MAKE MINOR RELOCATIONS AT NO ADDITIONAL CHARGE.

6. CONTRACTOR SHALL COORDINATE WITH ALL TRADES AND WORKMEN THE CLOSURE, PATCH, REPAIR OR REPLACEMENT OF ALL OPENINGS WHERE ITEMS HAVE BEEN REMOVED OR OPENED AS REQUIRED TO COMPLETE NEW WORK.

7. ALL WORK SHALL BE IN ACCORDANCE WITH THE 2011 EDITION OF THE NATIONAL ELECTRICAL CODE (NEC), GOVERNMENT LAWS, ORDINANCES, RULES AND REGULATIONS, AMENDMENTS ADOPTED BY THE LOCAL AUTHORITY, FEDERAL, STATE, AND LOCAL CODES HAVING JURISDICTION, AND LOCAL FIRE MARSHALL. IN THE EVENT OF CONFLICT BETWEEN THE ABOVE AUTHORITIES AND THESE CONSTRUCTION DOCUMENTS, THE MOST RESTRICTIVE SHALL GOVERN.

8. ALL WORK SHALL BE DONE IN THE BEST POSSIBLE MANNER AND WORKMANSHIP BASE ON STANDARD CONSTRUCTION PRACTICES.

9. CONTRACTOR SHALL INCLUDE IN THEIR BID ALL WORK REQUIRED TO CONNECT TO ALL SERVICE UTILITIES. CONTRACTOR SHALL VERIFY LOCATION AND INSTALLATION SHALL CONFORM TO ALL SPECIFICATIONS REQUIRED BY LOCAL UTILITIES.

10. ELECTRICAL CONTRACTOR TO FURNISH AND INSTALL A COMPLETELY WIRED AND OPERATIONAL ELECTRICAL SYSTEM AND PROVIDE ALL NECESSARY FINAL CONNECTIONS TO ALL EQUIPMENT.

11. CONDUIT ROUTING SHOWN ON DRAWINGS ARE DIAGRAMMATIC ONLY. EXACT ROUTING OF CONDUIT SHALL BE DETERMINED BY THE CONTRACTOR, ANY ADDITIONAL COST REQUIRED BY THE ROUTING OF ADDITIONAL CONDUITS SHALL BE INCURRED BY THE ELECTRICAL CONTRACTOR.

12. ALL EQUIPMENT AND MATERIALS FURNISHED, DELIVERED, AND INSTALLED SHALL BE NEW, IN PERFECT CONDITION, IN UNOPENED MANUFACTURER'S ORIGINAL CONTAINERS, AND OF THE HIGHEST QUALITY. STANDARD PRODUCTS SHALL BE FROM MANUFACTURERS REGULARLY ENGAGED IN THE PRODUCTION OF SUCH EQUIPMENT AND MATERIALS, AND SHALL BE OF THE LATEST STANDARD DESIGN. MATERIAL AND EQUIPMENT SHALL BEAR APPROVAL BY U.L. LISTING AND OTHER APPROPRIATE AGENCIES.

13. CONTRACTOR IS RESPONSIBLE FOR MAINTAINING THE INTEGRITY OF ALL FIRE-RATED WALLS, CEILING AND ROOF ASSEMBLIES PENETRATED. ALL CORING, CUTTING, PATCHING, AND REFINISHING OF WALLS, SURFACES AND OPENINGS PENETRATED OR AFFECTED BY HIS INSTALLATION SHALL BE SEALED WITH U.L. LISTED SEALANT AT ALL PENETRATIONS. FURNISH AND INSTALL APPROVED EXPANSION FITTING WHERE RACEWAY CROSSES AN EXPANSION JOINT. HOWEVER, NO CUTTING AND/OR PENETRATION OF WORK OF OTHER TRADES OR OF ANY STRUCTURAL MEMBER SHALL BE DONE WITHOUT THE CONSENT OF THE ARCHITECT.

14. ELECTRICAL CONTRACTOR SHALL PROVIDE TEMPORARY POWER AND ADEQUATE LIGHTING AS REQUIRED.

15. SEE MECHANICAL AND PLUMBING DRAWINGS AND SPECIFICATIONS FOR ADDITIONAL CONNECTION REQUIREMENTS TO CONTROL PANELS, CONTROL TRANSFORMERS, TIME CLOCKS, VALVES, T-STAT RELAYS AND DUCT SMOKE DETECTORS. PROVIDE ALL CONDUIT AND WIRING.

16. ALL PAINTING OF LIGHT FIXTURES, WHERE SPECIFIED, SHALL BE DONE IN A NEAT AND WORKMANLIKE MANNER. SURFACES SHALL BE EVENLY COVERED WITH NO SAGS, DRIPS, OR SCRATCHES. DO NOT PAINT LENSES, BAFFLES, REFLECTORS, OR CHROME PARTS. DISASSEMBLE FIXTURES PRIOR TO PAINTING AND CLEAN PORTIONS TO BE PAINTED. PAINT SHALL BE SEMI- GLOSS ENAMEL. ALL PAINTING COLORS SHALL BE APPROVED BY ARCHITECT.

17. PROVIDE SUFFICIENT GUTTER SPACES AS REQUIRED FOR PANELBOARDS, DISCONNECT SWITCHES, AND LUGS ETC. TO ACCOMMODATE CONDUCTORS ENTERING THE BOX. ALL GUTTER SHALL MEET U.L. LISTING REQUIREMENTS AND BE SIZED PER NATIONAL ELECTRICAL CODE (NEC).

18. FURNISH AN APPROVED EXPANSION FITTING WHERE RACEWAY CROSSES AN EXPANSION JOINT.
19. CONTRACTOR SHALL PROVIDE PULL BOXES EVERY ONE HUNDRED FEET (100') TO EASE TENSION ON WIRE AND ALLOW FOR PROPER INSTALLATION OF CONDUCTORS.

20. FURNISH AND INSTALL PULL WIRE IN ALL EMPTY CONDUITS AND AUXILIARY SYSTEMS, TELEPHONE, SECURITY, FIRE ALARM SYSTEMS, DATA, AND TELEVISION, ETC. VERIFY PULL WIRE REQUIREMENTS WITH OTHER SYSTEM VENDORS. CAP ALL EXPOSED CONDUIT ENDS.

21. ALL EXTERIOR ELECTRICAL DEVICES AND EQUIPMENT EXPOSED TO THE OUTSIDE ENVIRONMENT SHALL BE WEATHERPROOF TYPE, NEMA 3R.

22. WHERE MORE THEN ONE LIGHT SWITCH IS TO BE MOUNTED AT ONE LOCATION, MOUNT LIGHT SWITCHES IN A MULTIPLE GANG OUTLET BOX WITH A SINGLE COVER PLATE.

23. WHERE DISCONNECT SWITCHES ARE UNABLE TO BE MOUNTED DIRECTLY TO THE EQUIPMENT, THE CONTRACTOR SHALL PROVIDE AN APPROVED STRUCTURAL SOUND INDIVIDUAL MOUNTING SUPPORT. NO MODIFICATION SHALL BE DONE THAT WILL COMPRISE THE U.L. LISTING OR MANUFACTURER'S REQUIREMENTS OF THE EQUIPMENT.

24. ALL ELECTRICAL POWER, LIGHTING, TELEPHONE AND OR SIGNAL WIRING INSTALLED THAT PENETRATES FIRE-RATED WALLS OR ENCLOSURES SHALL BE IN METALLIC CONDUIT. CONTRACTOR SHALL BE RESPONSIBLE FOR MAINTAINING THE INTEGRITY OF ALL FIRE-RATED PENETRATIONS AFFECTED AND PROVIDE U.L. LISTED INTIUVESCENT SEALANT AT ALL PENETRATIONS.

25. CONTRACTOR RESPONSIBLE FOR PAYING ALL PERMITS AND APPLICABLE FEES RELATIVE TO THE CONSTRUCTION OF THIS PROJECT.

26. MECHANICAL SPLIT SYSTEM HVAC UNITS INSTALLED IN ENCLOSED AREAS. CONTRACTOR TO PROVIDE AN APPROVED LAMP RECEPTACLE, A LIGHT SWITCH NEAREST TO ENCLOSURE OPENING AND A RECEPTACLE OUTLET NEXT TO FAN COIL UNIT AND CONNECT TO NEAREST RECEPTACLE CIRCUIT. PROVIDE NECESSARY CONTROLS, CONTACTORS, AND OVERCURRENT PROTECTION TO FAN COIL PER MANUFACTURERS RECOMMENDATIONS.

27. CONTRACTOR TO VERIFY WITH ARCHITECT WALL DEPTH OF ALL WALLS CONTAINING FLUSH MOUNTED PANELBOARDS, INFORM ARCHITECT TO PROVIDE A MINIMUM OF SIX INCHES (6") WALL TO ACCOMMODATE PANELS. ELECTRICAL CONTRACTOR TO FURNISH AND INSTALL AN ADDITIONAL SIX (6) 1" SPARE CONDUITS STUBBED ABOVE CEILING FROM EACH ELECTRICAL PANELBOARD.

28. ELECTRICAL CONTRACTOR IS RESPONSIBLE FOR SIZING ALL CONDUIT PER NATIONAL ELECTRICAL CODE (NEC), WHERE DRAWINGS SHOW ONLY CONDUCTOR SIZE AND QUANTITY.

29. CONTRACTOR TO VERIFY WITH ARCHITECTURAL REFLECTED CEILING PLANS AND DETERMINE EXACT LOCATION OF LIGHT FIXTURES PRIOR TO FRAMING. CONTRACTOR SHALL VERIFY WEIGHT OF ALL LIGHT FIXTURES AND PROVIDE THE NECESSARY ADDITIONAL SUPPORT, FRAMING, AND EARTH QAUE WIRES AS REQUIRED PER LOCAL AUTHORITIES HAVING JURISDICTION.

30. CONTRACTOR SHALL MAINTAIN GROUND CONTINUITY TO EVERY OUTLET PER N.E.C., TABLE 250-122. PROVIDE A GREEN CONDUCTOR (NOT INDICATED) IN EACH RACEWAY. SIZE OF GROUNDING CONDUCTOR PER NEC ART 250.

31. ALL WIRES AND CABLES SHALL BE COPPER, 600 VOLT, #12 AWG MINIMUM. EXCEPT CONTROL WIRING WHICH SHALL BE #18 THWN. CONDUCTORS #10 AWG AND SMALLER SHALL BE SOLID. CONDUCTOR #8 AWG AND LARGER SHALL BE STRANDED. TYPE OF INSULATION AS NOTED ON DRAWINGS AND AS FOLLOWS:
 - THHN/THWN-2 INSULATION FOR ALL BRANCH CIRCUIT WIRING & CONTROL CIRCUIT WIRING.
 - XHHW-2 USED FOR ALL PANEL FEEDERS AND SERVICE CONDUCTORS.
 - THHN/THWN-2 INSULATION TYPE SHALL BE USED WHERE CONDUCTORS ARE INSTALLED IN CONDUITS EXPOSED TO THE WEATHER.

32. ALL UNDERGROUND CONDUITS SHALL BE PVC OR PVC RGS. IN A TRANSIONAL RISER, ALL PARTS OF THE CONDUIT SYSTEM THAT IS BELOW GRADE SHALL BE RGS WRAP WITH 10 MIL TAPE UP TO 6" ABOVE GRADE.

33. CONTRACTOR TO PROVIDE AN ARC FLASH STUDY IF REQUIRED BY THE AHJ. INSTALL PANEL WITH ARC FLASH WARNING LABEL AS REQUIRED BY THE CODE.

ELECTRICAL SYMBOLS

PLANS SYMBOLS

⓵

JUNCTION BOX

— —

FUTURE EQUIPMENT

— —

CONDUIT UNDER SLAB OR EARTH

— —

CONDUIT CONCEALED IN WALLS

A-#

➔

CONDUIT HOMERUN (LETTER(S) = PANELBOARD, # = CIRCUIT)

AC

1

MECHANICAL EQUIPMENT
LEGEND:
AC = AIR CONDITIONER
CP = CIRCULATION PUMP
CU = COOLING UNIT/COMPRESSOR UNIT
EF = EXHAUST FAN
FC = FAN COIL
HP = HEAT PUMP

S

S₃

S₄

S₅

S₆

□

○

IV

□

—

□

ITC

□

▽

□

FLOOR BOX WITH TELEPHONE OUTLET & COVERPLATE. RUN 3/4"CO TO TTB OR TTC

▽

□

COMPUTER OUTLET FOR PLUG-IN TYPE MODULAR JACK +18" AFF COD UNO. RUN 1"CO TO SERVER HUB.

▽

□

FLOOR BOX WITH COMPUTER OUTLET & COVERPLATE. RUN 3/4"CO TO SERVER HUB

▽

□

FLOOR BOX WITH TELEPHONE & COMPUTER OUTLET & COVERPLATE. RUN 3/4"CO TO TTB OR TTC AND 3/4"CO TO SERVER HUB.

①

□

SHEET KEY NOTE

PROVIDE CONDUIT AND BOX AS REQUIRED PER FIRE ALARM SYSTEM DRAWING.

T

F

DB

SD

SC

FACP

P

□

▽

▽

□

HORN STROBE

HORN ONLY

⊕

⊖

DUPLEX GROUNDING TYPE RECEPTACLE +18" AFF COD UNO
RECEPTACLE SUBSCRIPT LETTER TO INDICATE ITS' FUNCTION:
C = ABOVE COUNTER HEIGHT
D = DEDICATED CIRCUIT
H = MOUNTED HORIZONTAL
WP = WEATHERPROOF WHEN IN USE
IG = ISOLATED GROUND

⊕

⊖

GROUND FAULT PROTECTED RECEPTACLE ±42"AFF COD UNO

⊕

⊖

DOUBLE DUPLEX, 2 DUPLXES GROUNDING TYPE RECEPTACLE +18" AFF COD UNO

⊕

⊖

DUPLEX GROUNDING TYPE RECEPTACLE SPLIT WIRED +18" AFF COD UNO

⊕

⊖

SINGLE GROUNDING TYPE RECEPTACLE. VERIFY TYPE +18" AFF COD UNO, 208V, 1 PH

Ⓢ

Ⓢ

CLOCK RECEPTACLE +72" AFF TOB UNO

Ⓢ

Ⓢ

DUPLEX RECEPTACLE MOUNTED ON CEILING.

Ⓢ

Ⓢ

DUPLEX RECEPTACLE MOUNTED ON FLOOR.

Ⓢ

Ⓢ

SINGLE RECEPTACLE MOUNTED ON FLOOR. VERIFY NEMA CONFIGURATION

Ⓢ

Ⓢ

SPECIAL PURPOSE OUTLET, TYPE TO MATCH EQUIPMENT PLUG

Ⓢ

Ⓢ

MOTOR OR EXHAUST FAN

Ⓢ

Ⓢ

PUSHBUTTON

Ⓢ

Ⓢ

PHOTOCELL

Ⓢ

Ⓢ

TIMECLOCK

Ⓢ

Ⓢ

DISCONNECT SWITCH

Ⓢ

Ⓢ

COMBINATION MOTOR STARTER

Ⓢ

Ⓢ

FUSED DISCONNECT SWITCH

Ⓢ

Ⓢ

MAIN SWITCHBOARD OR DISTRIBUTION PANEL

A

Ⓢ

ELECTRICAL PANELBOARD SURFACE MOUNTED

A

Ⓢ

ELECTRICAL PANELBOARD FLUSH MOUNTED

LCC

Ⓢ

LIGHTING CONTROL CABINET

M

Ⓢ

METER

Ⓢ

Ⓢ

THERMOSTAT FURNISHED BY MECHANICAL, INSTALLED BY ELECTRICAL CONTRACTOR

NOTES:
CONTRACTOR TO COORDINATE MOUNTING HEIGHT WITH THE ARCHITECTURAL DRAWING. ADJUST AS REQUIRED TO AVOID BACK SPLASH, MIRROR, ETC.

ONLY THE NUMBER AND SIZE OF CONDUITS ARE SHOWN ON PLANS.
CONTRACTOR TO BE RESPONSIBLE FOR SIZING CONDUIT PER NEC

ONE-LINE DIAGRAM AND SCHEMATIC SYMBOLS

—

SINGLE THROW SWITCH

□

FUSE

Ⓢ

C.T.'S (CURRENT TRANSFORMER)

Ⓢ

P.T.'S (POTENTIAL TRANSFORMER)

Ⓢ

CIRCUIT BREAKER

Ⓢ

MOTOR OVERLOADS

M

METER

A

AMMETER

V

VOLTMETER

R#

RELAY

TD

TIME DELAY RELAY

Ⓢ

Ⓢ

Ⓢ

TRANSFORMER

Project Title

UNLV Police Station
Tenant Improvements
4700 Maryland Parkway
Las Vegas, Nevada

Sheet Title

General Notes
Symbols

Project Number

217-0019

Sheet Number

EA-1.0



- 1 RELOCATED PANEL FROM THE EXISTING IT ROOM
- 2 INTERCEPT FEEDER AND INSTALL ATS AS SHOWN
- 3 BLDG EMERGENCY DISCONNECT SWITCH
- 4 CUMMINS OR KOHLER UNITS. SEE ARCH DWG FOR LOCATION

EXISTING

PANEL: UNLV										PANEL VOLTAGE: 208/120 3 ϕ 4 W					CIRCUIT CODE: blank or N : NON-CONTINUOUS BUS: 200A MAINS: MLO K : KITCHEN NO. OF EQUIPMENT: 0																				
04/21/04 22/18 10:10:00 48:28										A/C RATING: RELOCATED																									
CIR NO	CODE	TRIP	POLE	LOAD DESIGNATION					C O N N E C T E D V A										LOAD DESIGNATION																
				DESCRIPTION (NOTE)					M	R	L	Φ A	Φ B	Φ C	A	B	C	Φ A	Φ B	Φ C	L	R	M	(NOTE)	DESCRIPTION	TRIP	POLE	CODE	CIR NO						
1	30	3	2	208V RECEPTACLE								1600							3264							ACCU-2				2					
3	3	2										1600			1600					3264											4				
5	30	3	2	208V RECEPTACLE																	3264										6				
7	30	2										1600								3240							FCU-2				8				
9	20	1		RECEPTACLE								360								3240											10				
11	20	1		RECEPTACLE									1000								3240											12			
13	20	1		RECEPTACLE								1000								X							X					14			
15	20	1		RECEPTACLE									1000							X							X					16			
17	20	1		RECEPTACLE										1000								X					X					18			
19	20	1		RELOCATED LOADS *								360								X							X						20		
21	20	1		RELOCATED LOADS *								360								X							X						22		
23	20	1		RELOCATED LOADS *									360			360						X					X						24		
25	20	1		SPARE									X							X							X						26		
27	50	2		AC-1/CU-1									2600								X						X						28		
29	2													2600								X					X						30		
PANEL NOTES:										PHASE TOTALS					Φ A: 11064	Φ B: 12424					Φ C: 13064					TOTAL CONNECTED VA					36552				
																									CONNECTED VA (CODE N)					36552					
																									CONNECTED VA (CODE L)					0					
																									CONNECTED VA (CODE R)					0					
																									CONNECTED VA (CODE K)					0					
																									PANEL CONNECTED KVA					36.6					
																									PANEL DEMAND KVA					36.6					
																									PANEL DEMAND AMPS					101.5					
																									HIGH ϕ AMPS W/LCL					108.9					

** RELOCATED EXISTING CIRCUITS
PROVIDE HANDLE TIE TO BREAKERS WHOSE HOMERUN HAVE COMMON NEUTRAL



LIGHTING FIXTURE SCHEDULE						
FIXTURE CALLOUT	FIXTURE DESCRIPTION	MANUFACTURER CATALOG NUMBER	FIXTURE VOLTAGE	LAMP DESCRIPTION AND QUANTITY	MOUNTING	ADDITIONAL COMMENTS
A	2' X 4' LED RECESSED	EATON 24CZ-LD4-50-UNV-L840-CD1-U	UNV	44.5 WATTS 5199 LUMENS	RECESSED	4100K CT RIBBED FROSTED ACRYLIC LENS 0-10V DIMMING STANDARD
AE	SAME AS "A" EXCEPT WITH EMERGENCY BATTERY BACK UP	EATON 24CZ-LD4-50-UNV-EL14W-L840- CD1-U	UNV	44.5 WATTS 5199 LUMENS	RECESSED	4100K CT RIBBED FROSTED ACRYLIC LENS 0-10V DIMMING STANDARD 1170 LUMENS EMERGENCY
A1	2' X 2 ' LED RECESSED	EATON 22CZ-LD4-34-UNV-L840-CD1-U	UNV	34.4 WATTS 3603 LUMENS	RECESSED	4100K CT RIBBED FROSTED ACRYLIC LENS 0-10V DIMMING STANDARD
A1E	SAME AS "A1" EXCEPT WITH EMERGENCY BATTERY BACK UP	EATON 22CZ-LD4-34-UNV-EL14W-L840- CD1-U	UNV	34.4 WATTS 3603 WATTS	RECESSED	4100K CT RIBBED FROSTED ACRYLIC LENS 0-10V DIMMING STANDARD 1047 LUMENS EMERGENCY
B	4FT LED SURFACE WRAP	EATON 4WNLED-LD1-41-F-UNV-L840- CD1-U	UNV	48 WATTS 4100 LUMENS	RECESSED	4100K CT 0-10V DIMMING STANDARD
BE	SAME AS "B" EXCEPT WITH EMERGENCY BATTERY BACK UP	EATON 4WNLED-LD1-41-F-UNV-EL14W- CD1-U	UNV	48 WATTS 4100 LUMENS	RECESSED	4100K CT 0-10V DIMMING STANDARD 854 LUMENS EMERGENCY
C	6" RECESSED LED DOWNLIGHT 1000 LUMENS	EATON PD6-10-ED010-PDM6A940-61V-C	UNV	13.2 WATTS 1000 LUMENS	RECESSED	CLEAR REFLECTOR 4100K CT 90 CRI 0-10V DIMMING STANDARD
CE	SAME AS "C" EXCEPT WITH EMERGENCY BATTERY BACK UP	EATON PD6-10-ED010-PDM6A940-61V-C	UNV	13.2 WATTS 1000 LUMENS	RECESSED	CLEAR REFLECTOR 4100K CT 90 CRI 0-10V DIMMING STANDARD
E1	EXTERIOR EMERGENCY UNIT	EATON AEL2-46-BZ	UNV	10 WATT LED 5000K	RECESSED	90 MINUTES OF EMERGENCY ILLUMINATION.
X	EXIT SIGN	ISOLITE RL-EM-R-WW	UNV	LED	RECESSED	UNIVERSAL EM EXIT, WHITE HOUSING & RED LETTERS.
LIGHTING FIXTURE SCHEDULE NOTE 1. CONTRACTOR TO PROVIDE ALL LAMPS, MOUNTING HARDWARE AND ACCESSORIES REQUIRED FOR A COMPLETE FIXTURE ASSEMBLY. 2. THE FIXTURE SCHEDULE INDICATES THE GENERAL DESCRIPTION OF THE LIGHTING FIXTURE AND MANUFACTURER CATALOG NUMBER. 3. IT SHALL BE THE CONTRACTOR'S RESPONSIBILITY TO DETERMINE THE CORRECT CEILING TYPE AND PROVIDE ALL NECESSARY TRIM AND HARDWARE FOR PROPER MOUNTING OF FIXTURE. 4. IT SHALL BE THE CONTRACTOR'S RESPONSIBILITY TO VERIFY EXACT LOCATION OF FIXTURE WITH THE ARCHITECTURAL REFLECTED CEILING PLAN PRIOR TO FIXTURE INSTALLATION. 5. PROVIDE A JUNCTION BOX WITH ALL EXIT LIGHTS CONNECTED TO MORE THAN ONE SET OF CONDUITS LANDING ON THE FIXTURE, UNLESS THE EXIT LIGHT IS PROVIDED WITH AN APPROVED OUTLET BOX FOR THROUGH WIRING. 6. PROVIDE AN ELECTRONIC BALLAST ONLY FOR ALL PL LAMPS. 7. ALL OUTDOOR FIXTURES SHALL BE U.L. LISTED FOR DAMP LOCATION. 8. PROVIDE BOX FOR RECESS FIXTURE IF FIXTURE IS NOT IR RATED AND IS REQUIRED BY AUTHORITY HAVING JURISDICTION REQUIRES IT TO BE IR RATED. 9. ALL FLUORESCENT LIGHTING SHALL USE ELECTRONIC BALLAST WITH 90% BALLAST FACTOR. 10. ALL EXTERIOR LIGHTING SHALL HAVE AN EFFICACY FACTOR OF AT LEAST 45 LUMENS PER WATT, PER 2003 IECC, SECTION 805.6.						

Issued For: Date:

Drawn AOA
Checked AOA
Approved AOA



Project Title

UNLV Police Station
Tenant Improvements
4700 Maryland Parkway
Las Vegas, Nevada

Sheet Title

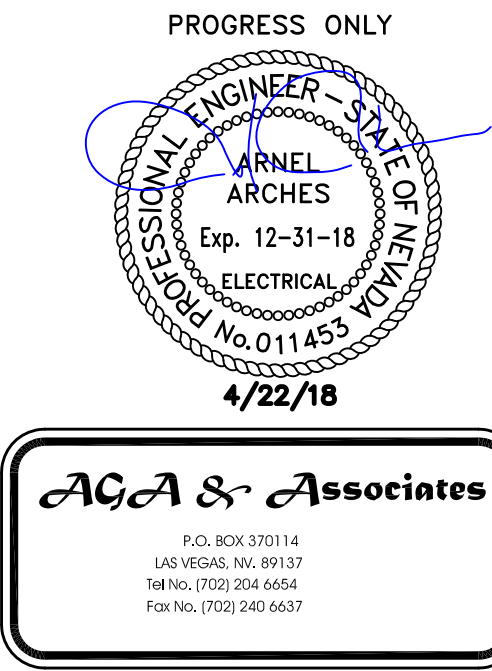
Fixture Schedule

Project Number

217-0019

Sheet Number

EA-7.0





Project Title
UNLV Police Station
Tenant Improvements
4700 Maryland Parkway
Las Vegas, Nevada

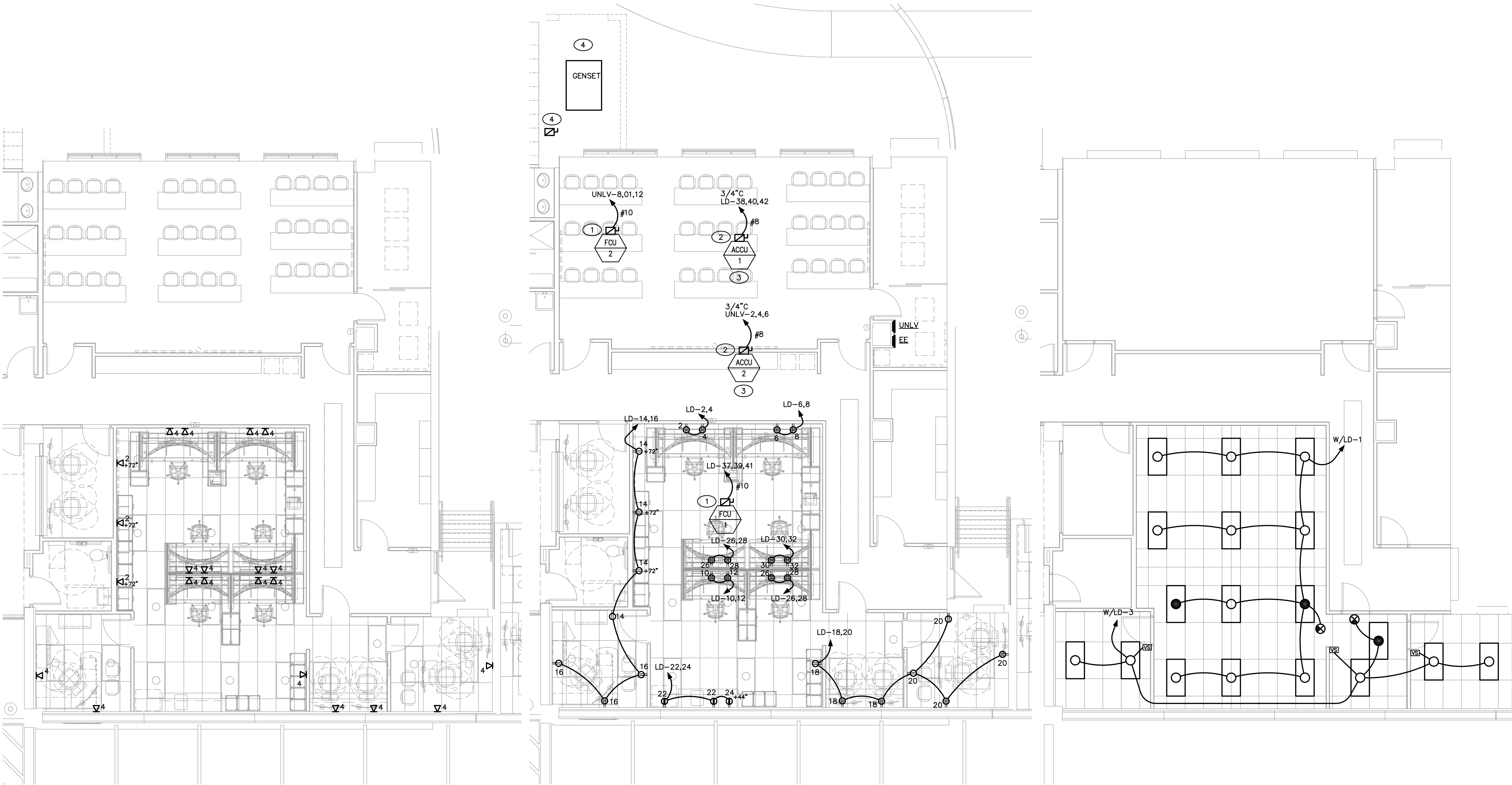
Sheet Title
Fixture Schedule

Project Number

217-0019

Sheet Number

EA-1.0



AUXILIARY PLAN
SCALE: 3/16"=1'-0"

POWER PLAN
SCALE: 3/16"=1'-0"

LIGHTING PLAN
SCALE: 3/16"=1'-0"

SHEET NOTES

- 1 60AS/30AF/3P FUSED DISCONNECT SWITCH.
- 2 60AS/40AF/3P/3R FUSED DISCONNECT SWITCH.
- 3 VERIFY LOCATION OF GEN SET
- 4 EMERGENCY SYSTEM BLDG DISCONNECT SWITCH

