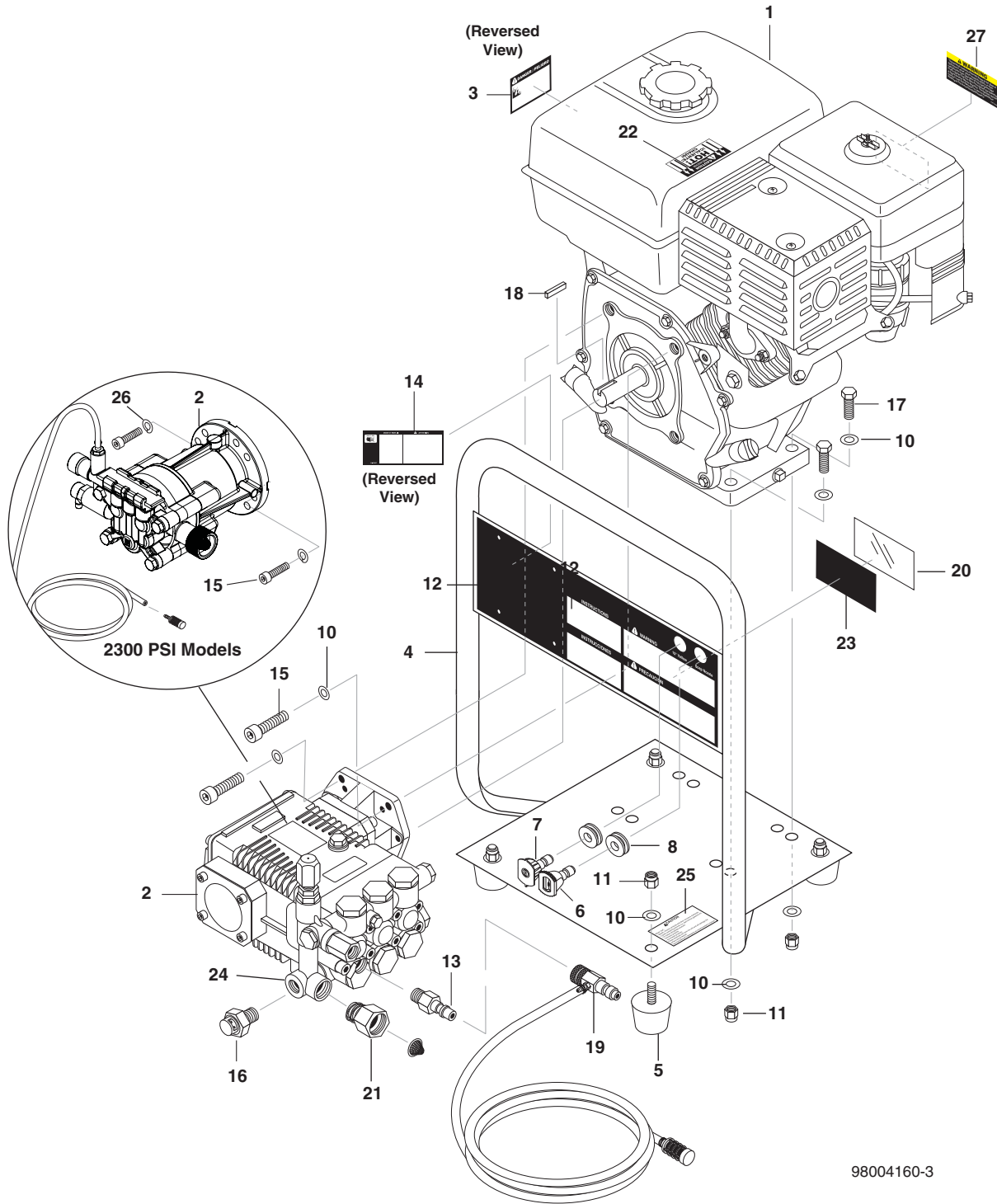


EXPLODED VIEW



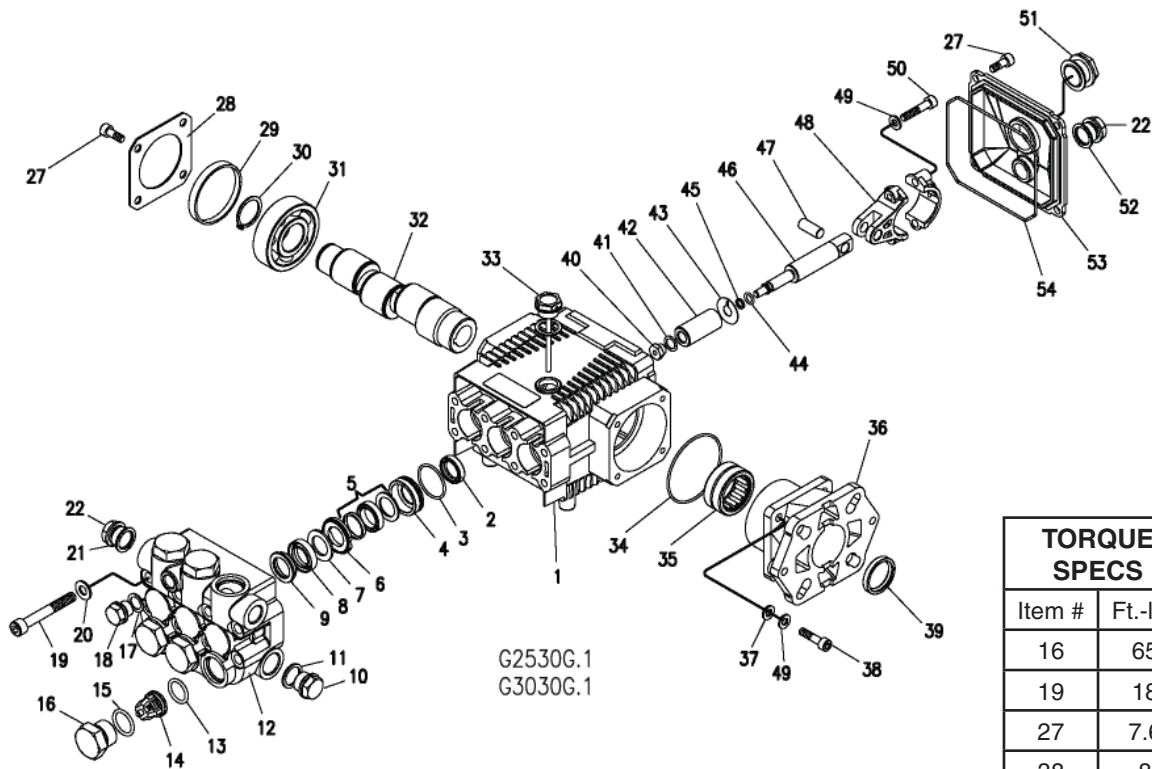
98004160-3

EXPLODED VIEW PARTS LIST

ITEM	PART NO.	DESCRIPTION	QTY
1	9.802-316.0	Engine, Honda, GX160K1QX2, 163cc (2400 PSI)	1
	9.194-015.0	Engine, Honda, GC1601QHA, 160cc (2300 PSI)	1
2	9.804-033.0	Pump, Kärcher KG2530G (3000)	1
	9.120-021.0	Pump, Kärcher Axial (2600 PSI)	1
	8.904-248.0	Pump, Hotsy HE 2530G	1
	8.904-893.0	Pump, Landa LG 2530G	1
	8.920-004.0	Pump, Legacy 2.6 GPM (2600 PSI)	1
3	9.800-008.0	Label, Danger Cool Engine	1
4	9.802-873.0	Handle Assembly	1
5	9.802-063.0	Mount, Vibration, 5/16"-18 x 9/16" Stud, 30 Duro	4
6	See Page 15 For Nozzle Information		
7	See Page 15 For Nozzle Information		
8	9.802-064.0	Grommet, Rubber, Nozzle Holder	2
9	9.800-017.0	▲ Tag, Pump Plug/Dipstick (2400 PSI)	1
	9.800-095.0	▲ Tag, Pump Plug/Vented Cap (2300 PSI)	1
10	8.718-980.0	Washer, 5/16" Flat, SAE	16
11	9.802-776.0	Nut, 5/16", ESNA, NC	8
12	9.800-059.0	Label, Warning/Instructions (HD Models)	1
	8.750-883.0	Label, Warning/Instructions (CB Models)	1
	8.900-893.0	Label, Warning/Instructions (HC Models)	1
	8.900-827.0	Label, Warning/Instructions (ZG Models)	1
13	9.802-171.0	Nipple, 3/8" x 3/8" NPT ST Male	1
14	9.800-037.0	Label, French Warning	1
15	8.733-007.0	Socket head 5/16"-24 X 3/4" Zinc Plated	4
16	9.804-025.0	Pump Protector, 1/4" 145°(2400 PSI)	1
17	9.802-713.0	Bolt, 5/16" x 1-1/4", 145°	4
18	9.802-958.0	Key, Motor Shaft	1
19	9.802-225.0	Detergent Injector Assy 3-5 GPM 0.83 (2400 PSI)	1
20	9.800-034.0	Label, Clear Lexan, 2-1/4" x 4"	1
21	9.802-146.0	Swivel, 1/2" MP x 3/4" GHF w/Strainer (2400 PSI)	1
22	9.800-006.0	Label, "Hot/Caliente", w/Arrows	1
23	8.932-968.0	Label, Intended For Outdoor Use	1
24	9.803-899.0	Unloader, VBA35 6.6 @ 3500 PSI (HC & ZG3 Models)	1
	9.175-018.0	UU1 3500PSI, Universal Unloader (HD Model)	1
25	9.800-049.0	Label, Manufacturers Cleaning Solution	6 ft.
26	9.802-813.0	Lock Washer (2300 PSI)	4
27	8.751-096.0	Label, Regulation 4442.6	1

▲ Not Shown

G.1 SERIES PUMP EXPLODED VIEW



TORQUE SPECS	
Item #	Ft.-lbs
16	65
19	18
27	7.6
38	8
40	7
50	13

G.1 SERIES PUMP EXPLODED VIEW PARTS LIST

ITEM	PART NO.	DESCRIPTION	QTY	ITEM	PART NO.	DESCRIPTION	QTY
1	9.803-938.0	Crankcase	1	19	9.803-952.0	Manifold Stud Bolt	8
2*	See Kit Below	Plunger Oil Seal	3	20	9.802-884.0	Washer	8
3*	See Kit Below	O-Ring Ø1.78 x 28.30	3	21	9.803-198.0	Copper Washer 3/8"	1
4*	See Kit Below	Pressure Ring, 15mm	3	22	9.802-925.0	Brass Plug 3/8"	2
5*	See Kit Below	U-Seal, 15mm	3	27	9.802-939.0	Hexagonal Screw	9
6*	See Kit Below	Intermediate Ring 15mm	3	28	9.803-953.0	Bearing Cover	1
7*	See Kit Below	Backup Ring 15mm	3	29	9.803-954.0	Seal Bearing	1
8*	See Kit Below	U-Seal, 15mm	3	30	9.802-914.0	Snap Ring	1
9*	See Kit Below	Support Ring, 15mm	3	31	9.803-955.0	Ball Bearing	1
10	9.802-926.0	Brass Plug, 1/2"	1	32	8.717-069.0	Crankshaft (2530G)	1
11	9.803-199.0	Copper Washer 1/2"	1		8.717-070.0	Crankshaft (3030G)	1
12	9.803-946.0	Manifold Housing	1	33	9.803-957.0	Oil Dip Stick	1
13*	9.803-947.0	O-Ring Ø1.78 x 15.54	6	34	9.804-581.0	O-Ring 3.53 x 55.56	1
14*	See Kit Below	Valve Assembly	6	35	9.804-582.0	Needle Roller Bearing	1
15*	9.803-948.0	O-Ring Ø2.62 x 18.77	6	36	8.717-212.0	Engine Flange	1
16	9.803-949.0	Valve Plug	6	37	9.803-210.0	Spring Washer	4
17	9.803-950.0	Washer, Copper	1	38	9.804-584.0	Flange Screw	4
18	9.803-951.0	Brass Plug G1/4	1				

G.1 SERIES PUMP EXPLODED VIEW PARTS LIST (CONT)

ITEM	PART NO.	DESCRIPTION	QTY
39	9.804-585.0	Crankshaft Seal	1
40*	See Kit Below	Plunger Nut	3
41*	See Kit Below	Copper Spacer	3
42*	See Kit Below	Plunger, 15mm	3
43*	See Kit Below	Copper Spacer	3
44*	See Kit Below	O-Ring Ø1.78x5.28	3
45*	See Kit Below	Teflon Ring	3
46	9.803-964.0	Plunger Rod	3
47	9.803-965.0	Connecting Rod Pin	3
45	9.803-966.0	Connecting Rod	3
49	9.803-218.0	Spring Washer	6
50	8.933-020.0	Connecting Rod Screw	6
54	9.803-969.0	O-Ring 2.62 x 107.62	1
53	9.803-968.0	Crankcase Cover	1
52	9.803-197.0	Gasket, G3/4	1
51	9.803-202.0	Sightglass G3/4	1

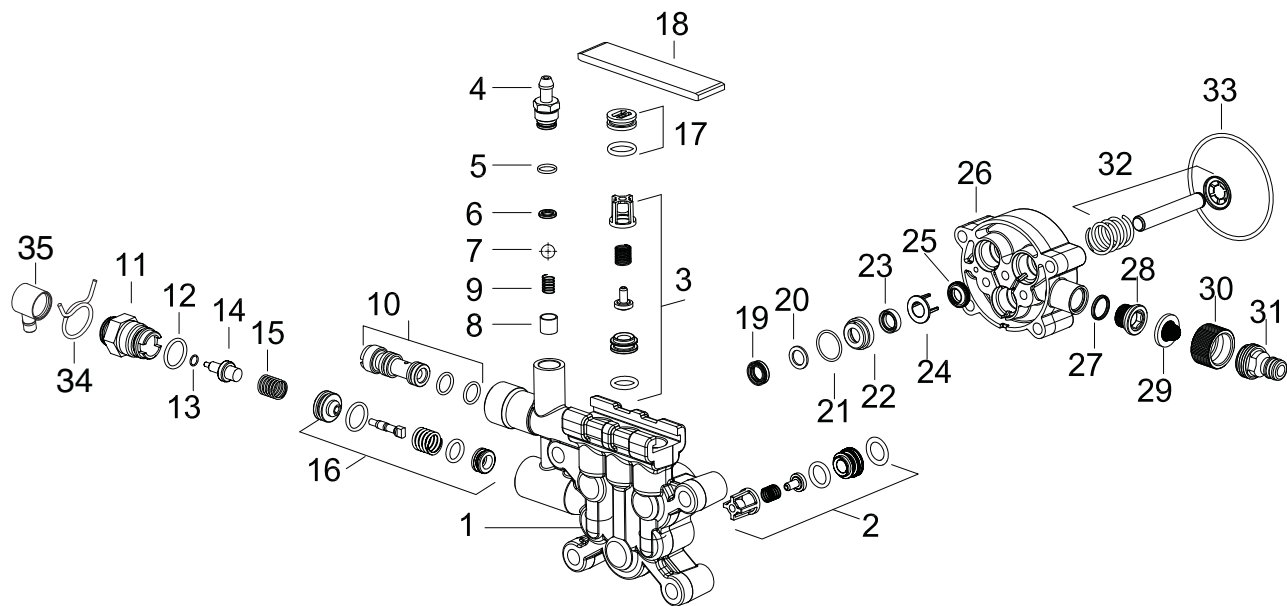
* Part available in kit (See below)

REPAIR KIT NUMBER	8.725-354.0	8.725-355.0	9.803-934.0	9.803-936.0	9.803-937.0
KIT DESCRIPTION	Plunger Seal 15mm	Complete Seal Packing 15mm	Plunger 15mm	Complete Valve	Plunger Oil Seals
ITEM NUMBERS INCLUDED	3, 5, 7, 8, 9	3, 4, 5, 6, 7, 8, 9	40, 41, 42, 43, 44, 45	13, 14, 15	2
NUMBER OF CYLINDERS KIT WILL SERVICE	3	1	1	6	3

AXIAL PUMP EXPLODED VIEW AND PARTS LIST

9.120-021.0

8.920-004.0

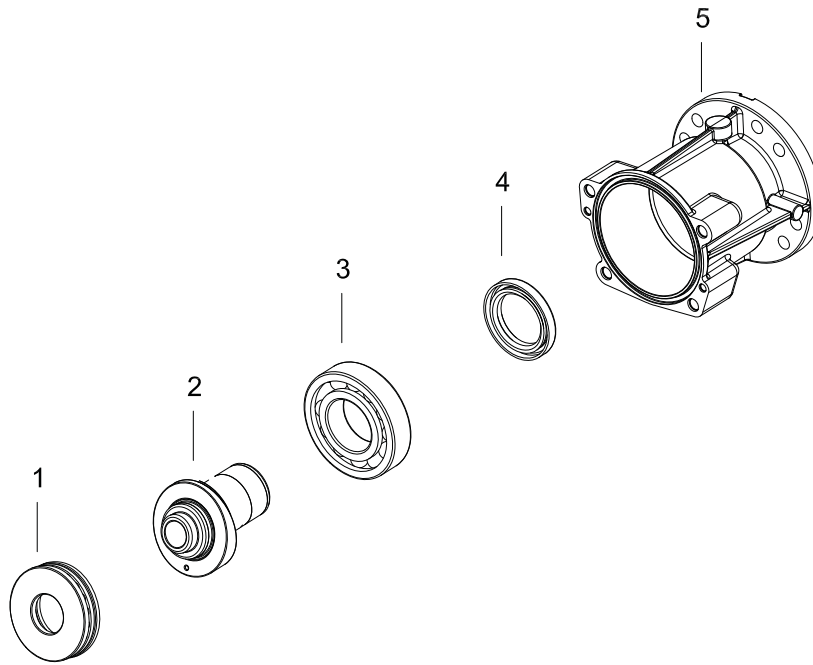


ITEM	PART NO.	DESCRIPTION	QTY
1	9.135-015.0	Cylinder Head	1
	8.762-010.0	Cylinder Head, Legacy	1
2	9.175-004.0	Valve Assy Horizontal	3
3	2.884-916.0	Spare Part List, Set 3	1
4	5.443-448.0	Nipple Chemistry	1
5	6.362-451.0	O-Ring Seal 8.0 x 1.0	1
6	6-362-634.0	O-Ring Seal, 5.28 x 1.78	1
7	7.401-909.0	Sphere 7 G40 - 1.4401	1
8	5.110-714.0	Sleeve	1
9	5.332-258.0	Helical Spring	1
10	9.139-372.0	Spare Part List Nozzle INS 020/021 Pump	1
11	9.184-018.0	Outlet-Thermal Valve	1
12	6.362-480.0	O-Ring Seal, 12.42 x 1.78	1
13	7.362-507.0	O-Ring Seal 8 x 2 NBR 90	1
14	6.413-403.0	Thermo Valve Tin Coated	1
15	5.332-290.0	Helical Spring	1
16	9.175-005.0	Unloader Assembly	1

ITEM	PART NO.	DESCRIPTION	QTY
17	4.132-007.0	Drain Plug Replacement	1
18	5.003-062.0	Plate	1
19	9.177-301.0	High Pressure Seal	3
20	9.177-310.0	Back Ring	3
21	6.362-833.0	O-Ring Seal 12.5 x 1.73	3
22	9.155-011.0	Housing Low Pressure Seal	3
23	6.363-058.0	Grooved Ring	3
24	9.134-016.0	Spacer	3
25	6.365-393.0	Oil Sealing 12.20x4/6	3
26	9.133-007.0	Piston Guide	1
27	6.362-390.0	O-Ring Seal 15.6 x 1.8	1
28	9.134-019.0	Male Adapter	1
29	9.181-005.0	Filter Seal	1
30	9.155-013.0	Female House Conn	1
31	9.178-005.0	Adapter Garden	1
32	9.139-370.0	Spare Part List, Piston	1
33	6.362-471.0	O-Ring Seal 80.0x3.0 NBR70	1
34	8.752-032.0	Clamp, Tension Spring OD 11/16"	1
35	8.752-076.0	Valve, Thermal Cover Long	1

AXIAL PUMP EXPLODED VIEW PARTS LIST

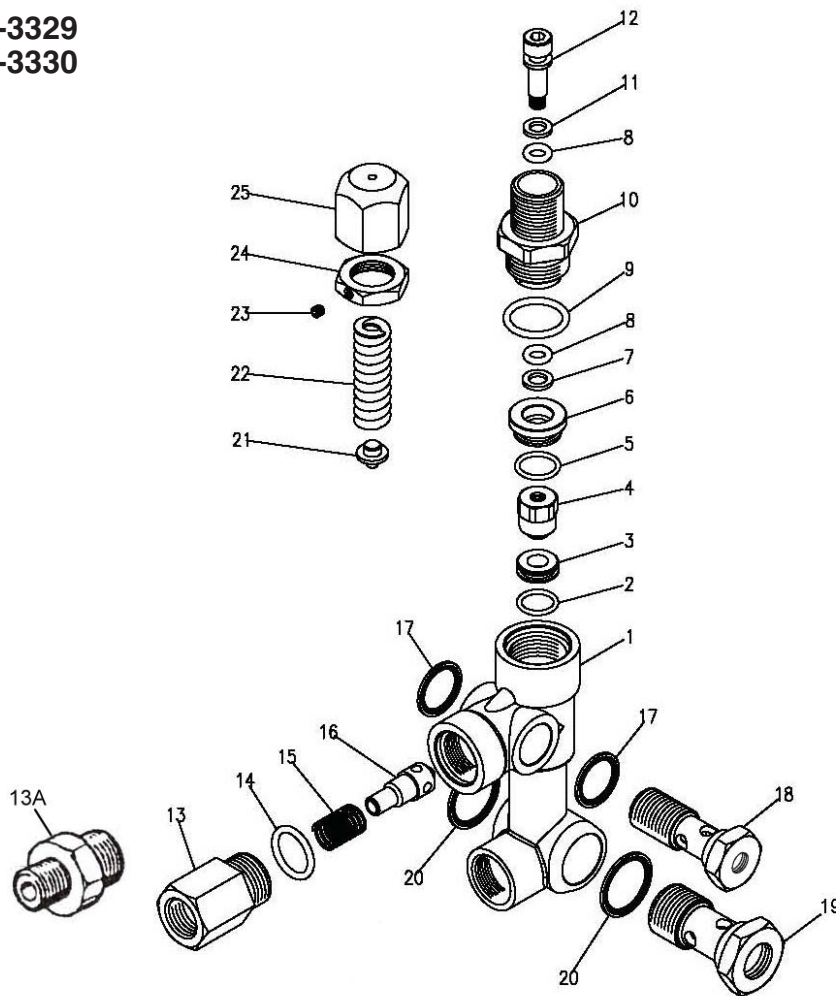
9.120-021.0 Housing View
8.920-004.0 Housing View



ITEM	PART NO.	DESCRIPTION	QTY
1	9.166-016.0	Grooved Ball Bearing	1
2	9.135-018.0	Swash Plate Hor.	1
3	9.165-356.0	Ball Bearing No 6207	1
4	9.177-314.0	Radial Seal 35 x 52 x 7	1
5	9.135-016.0	Oil Housing	1

VBA 35 UNLOADER EXPLODED VIEW

9.803-899.0 5-3329
 9.803-900.0 5-3330

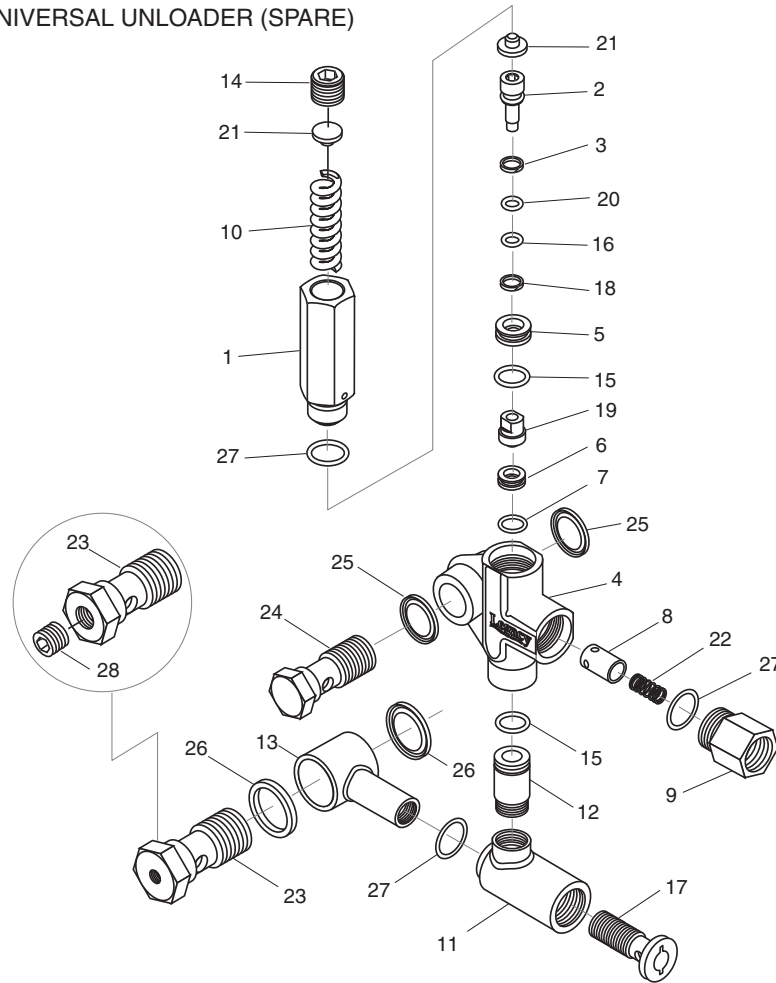


VBA 35 UNLOADER EXPLODED VIEW PARTS LIST

ITEM	PART NO.	DESCRIPTION	KIT	QTY	ITEM	PART NO.	DESCRIPTION	KIT	QTY
1		Body Valve (KG)		1	16		Poppet	B	1
		Body Valve (KS)		1	17	9.802-893.0	Seal Washer 3/8		2
2		O-Ring	A,C	1	18	9.803-915.0	Banjo Bolt 3/8" w 1/8" Pilot		1
3		Seat	C	1		9.803-919.0	Banjo Bolt 3/8" Solid Cap		1
4		Ball, Sub-assy	C	1	19	9.803-920.0	Banjo Bolt 1/2" w 1/4" Pilot		1
5		O-Ring	A	1		8.750-105.0	Banjo Bolt 1/2" Solid Cap		
6	9.803-907.0	Guide Bushing		1		9.803-919.0	Banjo Bolt 3/8" Solid Cap		
7		Teflon Ring		1	20	9.803-921.0	Seal Washer 1/2		2
8		O-Ring	A	1	21		Plate	C	1
9		O-Ring	A	2	22		Spring	C	1
10	9.803-911.0	Connector		1	23	8.933-021.0	Set Screw		1
11		Teflon Ring	A	1	24	9.803-925.0	Nut		1
12	70-120207	Stem	C	1	25	9.803-926.0	Brass Handle		1
13	9.803-941.0	Connector Female		1	Kit A	8.717-672.0	O-Ring Repair Kit		
13A	9.702-892.0	Connector Male		1	Kit B	8.717-673.0	Outlet Kit		
14		O-Ring	A,B	1	Kit C	8.717-674.0	Stem Repair Kit		
15		Spring	B	1					

UU1 UNLOADER EXPLODED VIEW

9.175-018.0
 UU1 3500PSI, UNIVERSAL UNLOADER (SPARE)



UU1 UNLOADER EXPLODED VIEW PARTS LIST

ITEM	PART #	DESCRIPTION	KIT	QTY	ITEM	PART #	DESCRIPTION	KIT	QTY
1	8.751-394.0	Piston Housing	D	1	17	9.149-006.0	Sliding Connector Guide		1
2		Piston	C, D	1	18		O-Ring Backup 6 x 1.45 x 1.68	A, D	1
3		Piston O-Ring Back Up	A, D	1	19		Ball Housing Assy	C, D	1
4	8.749-796.0	Main Block		1	20		O-Ring 6.75 x 1.78 BN80	A, D	1
5	9.152-372.0	Piston Ring	D	1	21		Spring Seat	C, D	2
6		Ball Seat	C, D	1	22		Plunger Spring	B	1
7		O-Ring 10.5 ID x 1.5 CS	A,C,D	1	23	8.917-699.0	Banjo Bolt 1/2" Short		1
8		Plunger	B	1		8.917-700.0	Banjo Bolt 1/2"-1/4" NPT Short		1
9	9.152-016.0	Plunger Housing		1	24	8.917-698.0	Banjo Bolt 3/8" Short		1
10		Bypass Spring	C, D	1	25	9.802-893.0	Seal Washer 3/8"		2
11	9.149-001.0	Low Pressure Port		1	26	9.803-921.0	Seal Washer 1/2"		2
12	9.152-017.0	Sliding Connector, 30mm		1		9.802-893.0	Seal Washer 3/8"		2
	8.762-005.0	Sliding Connector, 40mm, Long		1	27		O-Ring 15 ID x 2CS	A,B,D	3
13	9.149-002.0	Sliding Connector H 1/2"		1	28	8.706-865.0	Plug, 1/4" Countersunk		1
	9.149-005.0	Sliding Connector H 3/8"		1	Kit A	9.104-038.0	O-Ring Repair Kit		
14	9.196-011.0	Plug 5/8 -18 UNF	D	1	Kit B	9.104-039.0	Outlet Kit		
15		O-Ring 12 ID x 2 CS	A, D	2	Kit C	9.104-040.0	Stem Basic Kit		
16		O-Ring 6 ID X 2 CS	A, D	1	Kit D	8.920-045.0	UU1 Complete Stem Kit		