



Extraordinary DSG Meeting CSS Consequential Change

10th June 2019

Agenda

- Welcome and introductions
- Detailed Design Solution Discussion
 - Stakeholder Management
 - RGMA
 - SPA Updates
 - Settlement Data Submission
- Future Topic Design Questions
- Data Cleansing Update
- AOB

A stylized graphic of a house with a gabled roof and a large window. The window is divided into five vertical panes. The text 'Stakeholder Data' is centered within the window. The background has a light blue diagonal line pattern.

Stakeholder Data

Change Overview

Stakeholder Data

Market Participant Data Ownership –

As the CDSP, UK Link will master the Market Participant data for the gas industry as defined in the REC, and will provide CSS and the REC code manager with details of any new stakeholder or updates to existing stakeholder details

Shipper – Supplier & Shipper - Network Relationship Changes –

- UK link will hold details of shipper and supplier relationships
- Any changes applied in UK Link to the stakeholder relationships between shipper-supplier and shipper-network, an update will be provided to the REC Code Administrator and to the CSS Provider

Market Participant Statuses –

REC Market Participant statuses such as Market Entry Unqualified, Market Qualified, Market Sanctioned and Market Exited may be required to be held within UK Link as a separate data item independent to that of UK Link stakeholder statuses. UK Link system is not expected to have any validations build around these new REC statuses on its receipt. It is expected to be CSS providers responsibility to undertake validation against the shipper if unqualified/sanctioned/exited participants are sending Registration syncs messages.

Solution Options

Stakeholder Data Updates

1

New Batched Interface to CSS & Offline communication to REC Code Manager

2

Offline communication to CSS and REC Code Manager

Option 1a - High Level Impact Assessment

1. New Batched Interface to CSS & Offline communication to REC Code Manager

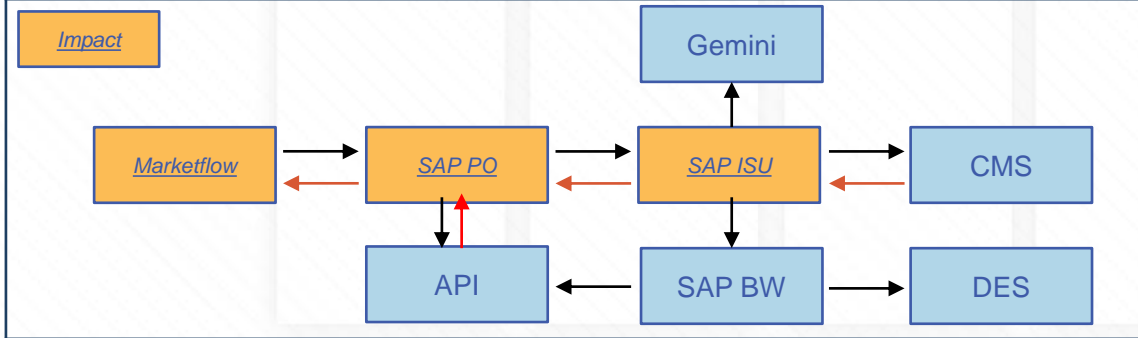
New Batched Interface to CSS

Any creation, amendment and termination of the stakeholder data will be notified to CSS provider as part of new batched interface. UK Link is expected to notify CSS once the data is created or updated with a change effective date included.

Offline update to REC Code Manager

Currently on successful stakeholder updates, Xoserve customer lifecycle team is managing the offline communication to the involved stakeholders via email. This process will continue as is and in addition, REC code managers will be notified via email to inform them of the stakeholder updates.

Impacted Systems



Overall Impact
Medium

Assumptions

- There will be an interface between CSS and UK Link to communicate stakeholder updates (considered for overall complexity impact)
- Communication to REC code admin/manager are offline communication
- CSS will send a response to UK Link in case of any rejections
- Batch processing schedule will be designed for new interface
- UK Link will master stakeholder data for shippers, suppliers, MAPs, MAMs, GT, iGTs, ASP, DMSPs & SMSO etc. for GAS industry
- UK Link will not transform stakeholder status to equivalent REC participant status
- CSS will validate shipper registrations in case of withdrawals, terminations and sanctions
- Notification to the Industry participants will remain manual at the back of the stakeholder updates

Option 1 - System Impact Assessment

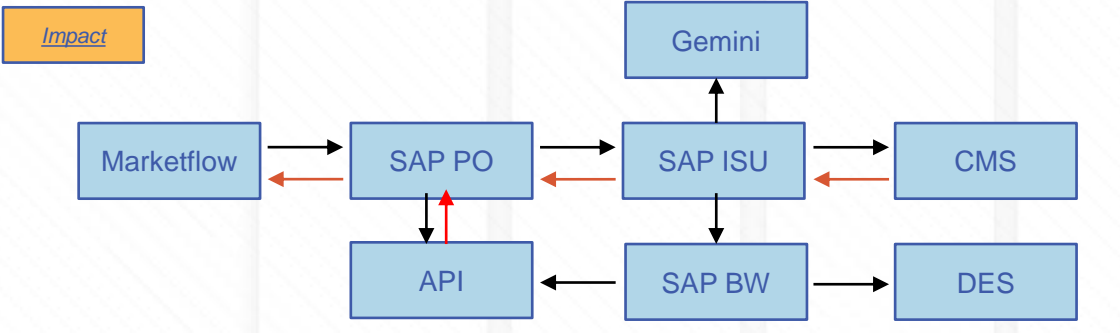
	SAP ISU	SAP PO	Marketflow
System Component:	SPA	Configuration	Configuration
Development Type:	Code Change	Configuration code	Configuration Code
Impacted User(s):	CSS Provider	CSS Provider	CSS Provider
Build Type:	New Interfaces for CSS and Code change in UK Link	New Interfaces for CSS	New Interfaces for CSS
Change Description:	2 New Interfaces - Functionality within SAP ISU will be build to send updates and its response from CSS to ISU system Code change to identify the triggers on stakeholder updates	2 New Interfaces System to make the configuration for 1 new interface from ISU to CSS and 1 Inbound from CSS to ISU	2 New Interfaces System to make the configuration for 1 new interfaces from ISU to CSS and 1 Inbound from CSS to ISU
Requirement Clarity:	A	A	A
Change Complexity:	G	G	G
Integration Complexity:	A	A	A
Test Data Prep Complexity:	G	G	G
Test Execution:	G	G	G
Regression Testing Impact:	G	G	G
Performance Impact:	G	G	G

Option 2 - High Level Impact Assessment

2. Offline update to CSS and REC Code Manager

Currently on successful stakeholder updates, Xoserve customer lifecycle team is managing the offline communication to the involved stakeholders via Emails. Post CSS implementation, this process will continue as is and in addition, CSS and REC code managers will be notified via Email to inform them of any new stakeholder or updates to existing stakeholder details

Impacted Systems



Assumptions

- CSS will send a response to UK Link with warnings but not expected to send any rejections
- CSS will validate shipper registrations in case of withdrawals, terminations and sanctions
- UK Link will not transform stakeholder status to equivalent REC participant status
- Notification to the Industry participants will remain manual at the back of the stakeholder updates
- UK Link will master stakeholder data for shippers, suppliers, MAPs, MAMs, GT, iGTs, ASP, DMSPs & SMSO etc. for GAS industry

Overall Impact

Low

Option 2- System Impact Assessment

SAP ISU	
System Component:	SPA
Development Type:	NA
Impacted User(s):	CSS Provider & REC Code Manager
Build Type:	NA
Change Description:	No changes to the existing stakeholder updates. Offline communication format will be inline to existing BAU updates

Requirement Clarity:	G
Change Complexity:	G
Integration Complexity:	G
Test Data Prep Complexity:	G
Test Execution:	G
Regression Testing Impact:	G
Performance Impact:	G

Shipper Sanctions

Change Overview

Shipper Sanctions

When sanctions are applied/removed for a shipper organisation by a network (GTs/iGTs) then an update will be provided to both the REC Code Administrator/Manager and to the CSS Provider immediately.

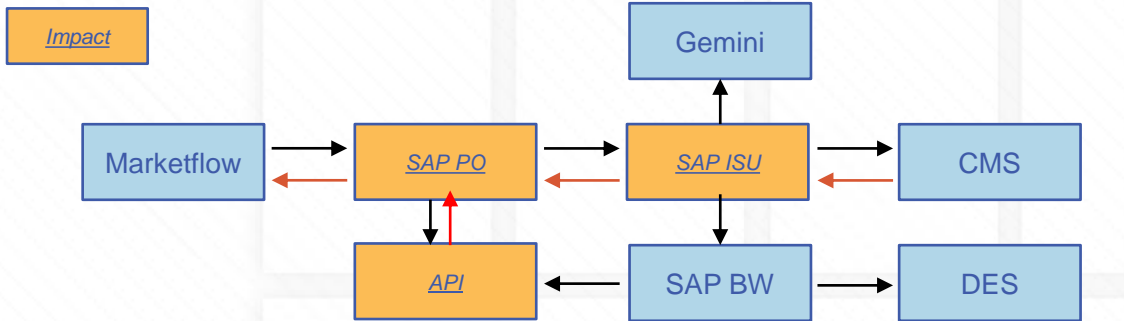
New Real Time Interface to CSS

Networks can apply sanctions on shipper organisation via the DN Portal as per UNC rules. On successful processing of the request, sanctions become effective immediately within UK Link. Post CSS implementation, for any sanction application/removal in UK Link is expected to be notified to CSS provider as a real time update to support the validation of any new registrations or Shipper updates.

Offline update to REC Code Manager

When network apply sanction on shipper organisations then a business exception will be raised for Xoserve customer lifecycle team for them to action the offline update to REC code manager via email

Impacted Systems



Assumptions

- Any sanctions applied manually by customer lifecycle team will be notified to CSS in real time
- CSS will send a sync response to UK Link on receipt of real time interface
- UK Link will send a warning notification to CSS in case of registration sync message received with shipper details having sanctions applied in UK Link

Overall Impact

Medium

A stylized graphic of a house with a gabled roof and a large window. The window is divided into five vertical panes. The text "RGMA Updates" is centered in the middle pane. The background has a light blue diagonal line pattern.

RGMA Updates

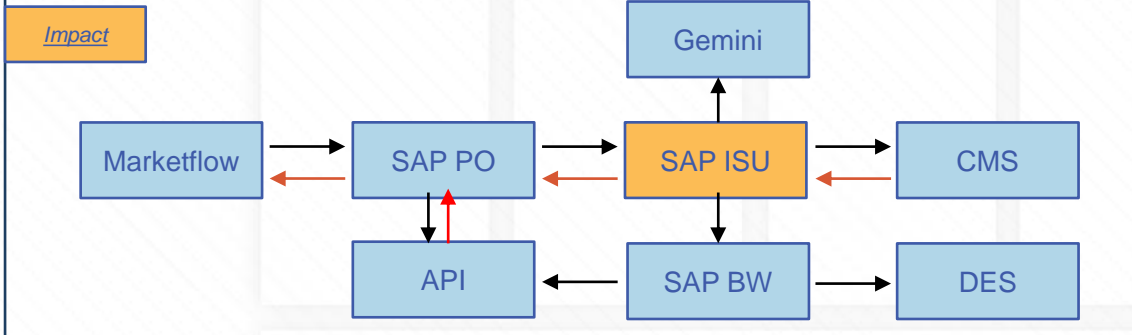
Change Overview

RGMA Updates

Post CSS implementation, there is no change anticipated in any of the RGMA flows or business processes except for aligning the inbound files (ONJOB/ONUPD) validations with respect to new supplier switching statuses, e.g. Validated, Confirmed and Secured received as part of Registration sync message from CSS.

As CSS will master the domestic indicator (market sector code) data item, RGMA process will no longer be used to update this information. Market sector is currently an optional field in RGMA files, if the field is populated in the file it will be ignored and not used to update UK Link.

Impacted Systems



Design Considerations/Assumptions

- For supplier switch and change of shipper processes, the switch status will go through the same values as of now (i.e., from CF to CO to LI to SU)
- Validations for inbound RGMA files will continue as at present
- No file format changes to ONJOB, ONUPD, CDN or PAC files

Overall Impact

Low



SPA Updates

Change Overview

SPA Updates

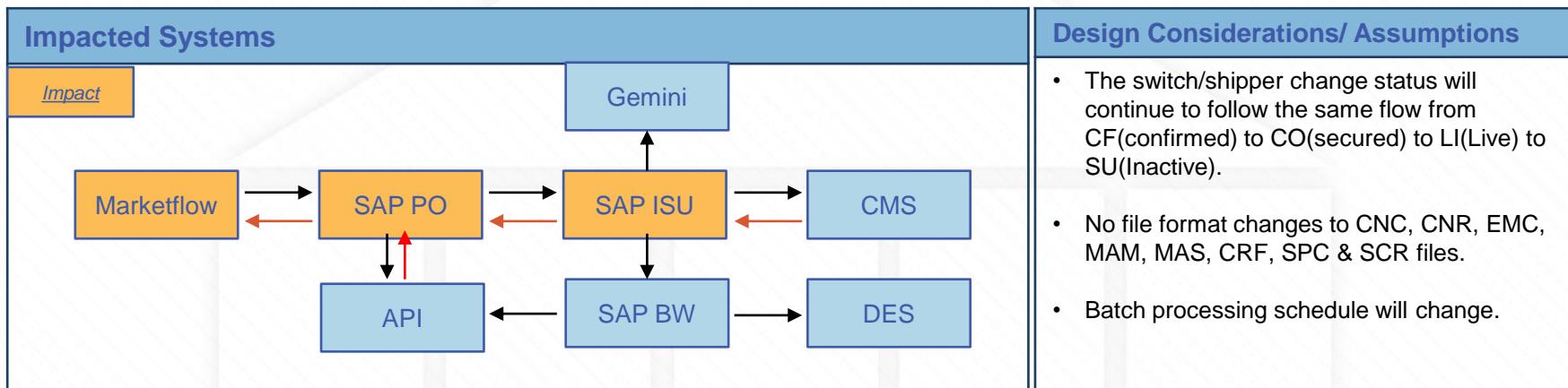
Capacity Referrals – The process to support capacity referrals will continue as is for shippers via SPC file to request change in the capacity values. Class change and Meter Read frequency change will continue using SPC file.

Emergency Contact Details - Shipper Users will be able to send the emergency contact details to UK Link outside of switch event via EMC files as per current process. This process will continue as it is and existing validations will hold the same.

Priority Service Details - Shipper Users will be able to send the vulnerable customer details to UK Link outside of the switch event via CNC files as per current process. This process will continue the same as at present.

MAM updates – MAM file received from an incoming shipper in relation to their pending registration prior to the switch status being updated to 'secured' (equivalent of current world 'CO') will be rejected and not applied in UK Link. This process will continue the same as at present.

High Level Impact Assessment



Overall Impact
Low

The background features a faint, light gray outline of a house with a gabled roof. Inside the house, there is a large rectangular window divided into five vertical panes. The text 'Settlement Data Submission' is centered over this window area. The entire image has a light blue diagonal line pattern.

Settlement Data Submission

The background features a faint, light gray outline of a house with a gabled roof. Inside the house, there is a large rectangular window divided into five vertical panes. The entire scene is set against a background of fine, light blue diagonal lines. A solid blue horizontal bar is located at the top of the image, and a solid cyan horizontal bar is at the bottom.

Base Registration Nomination

Change Overview

Base Registration Nomination

Shippers will continue to provide and maintain the settlement details that are required in UK Link for the Supplier/Shipper's registration period.

Details provided by a shipper as part of the current confirmation process that are not provided to UK Link via the CSS Registration Synchronization message, can be provided via Base Registration Nomination interface by the shipper to ensure the relevant settlement details are applied from the CSS effective date. This can include items such as Class, Meter Read Frequency, SOQ/SHQ, Contact details etc.

Where a Base Registration Nomination is associated with a CSS Registration supply meter point data will be provided to the Shipper.

Where a Base Registration Nomination is not associated with a CSS Registration, default values will be applied based on the rules defined.

Preferred Solution Option

New Batch interface, response and association for Settlement details (Base Registration Nomination)

High Level Impact Assessment

New Batch interface for Settlement details (Base Registration Nomination)

As part of the solution, three new file based interfaces will be built Interface 1: to receive the Base Registration Nomination details from shippers, Interface 2: to send the responses back to shippers , and Interface 3: to send the association notification.

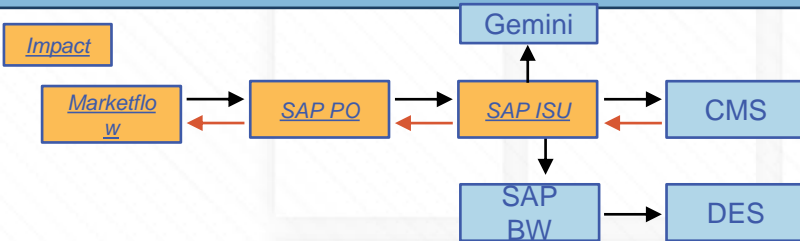
For every Base Registration Nomination(BRN) received there will be a BRR response sent out with a BRN_REFERENCE_NUMBER which can be used during BRN cancellation. Post attaching the Base Registration Nomination(BRN) to a CSS Registration an Association(ASN) notification message is sent out with the Supply meter point details including transportation rates

Base Registration Nomination details will be validated on receipt ; response rejections after validation will be sent in the rejection segment. Since the new BRN file is similar to that of CNF (Confirmation file) the field validations will follow the same rules as that of confirmation file with few new extra validations

In case of multiple Base Registration Nomination(BRN) details being sent ,the best fit BRN will be selected from the available BRN and will be applied to the CSS Registration.

Matching / linking will be based on MPRN, Shipper and Supplier, and if provided the Effective Date and CSS Registration Identifier.

Impacted Systems



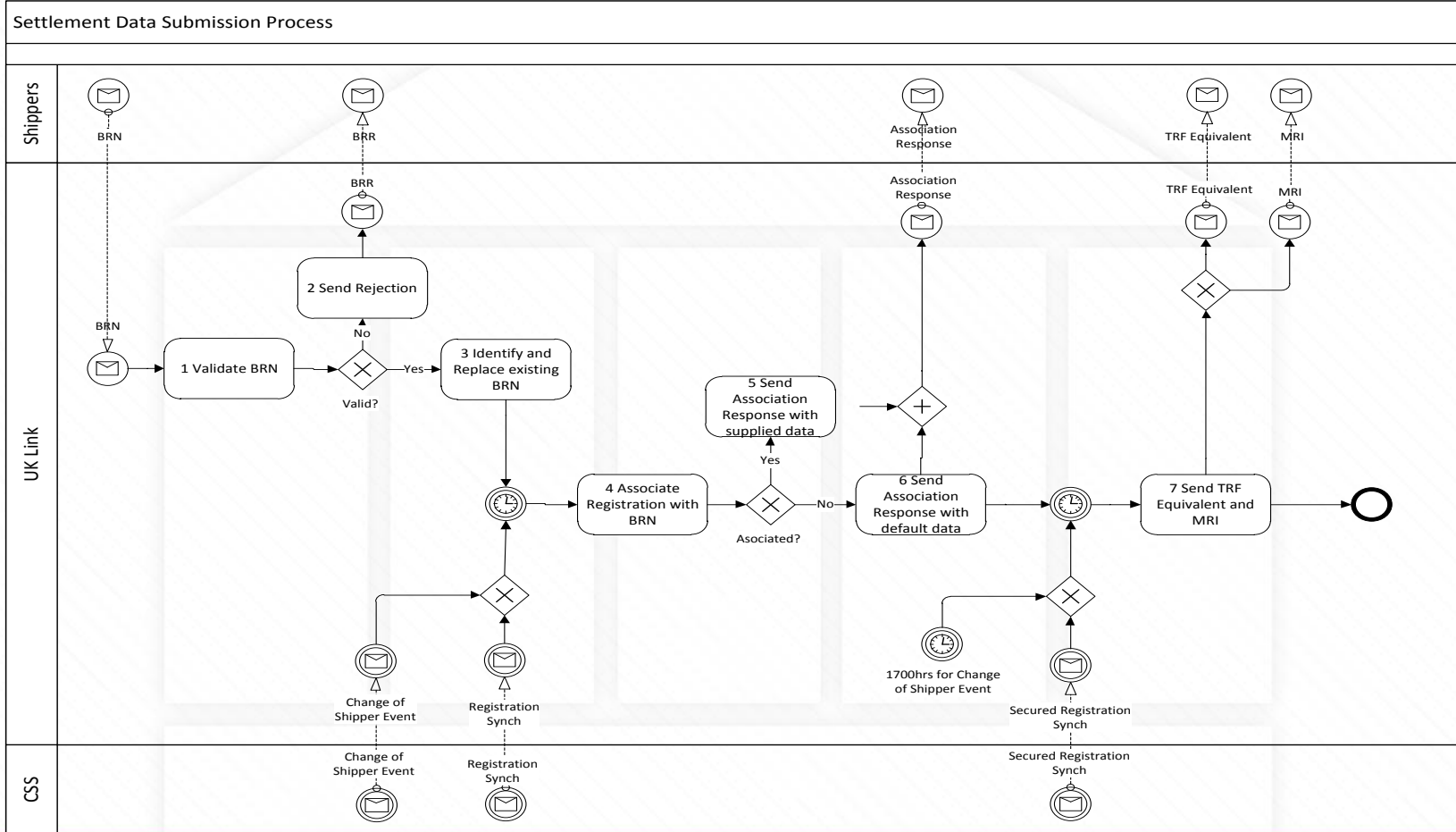
Overall Impact

Medium

Design Considerations / Assumptions

- Proposal for 3:00 PM D-1 (Calendar day) cut off to receive settlement details.
- There is no necessary sequence between BRN and Switch

Settlement Data Submission Process



Provision of Settlement Data

Below the an example of the data that is currently expected to be received as part of the settlement data file – defined in code as the Base Registration Nomination (BRN)

Base Registration Nomination	Optionality
Shipper Reference Number	M
MPRN	M
Shipper	M
Supplier	M
Registration Date	O
CSS Reference Number	O
Class - Rules	O
Response Reference (RRN)	O
Contact Details - PSR	O
Contact Details - Emergency/Large Site	O
MRF	O
Batch	O
Premises	O
MAM	O

Provision of Settlement Data - Example

Rules need to be defined as to how the new settlement data will be managed

		Arrival Sequence →								
Attribute	Optionality	1	2	3	4	5	6	7	8	9
MPRN	M	1234	1234	1234	1234	1234	1234	1234	1234	1234
Shipper	M	UVW	UVW	UVW	UVW	UVW	UVW	UVW	UVW	UVW
Supplier	M	XYZ	XYZ	XYZ	XYZ	XYZ	XYZ	XYZ	XYZ	XYZ
Eff Date	O	-	01/6/19	-	02/6/19	01/6/19	-	02/6/19	02/6/19	03/6/19
CSS Ref	O	-	-	-	-	-	9876	9876	-	-
RRN Ref	O	-	-	-	-	ABC	-	-	-	-
	Result	Replaced by 3	Replaced By 5	Available Replaces 1	Replaced By 8	Available Replaces 2	Replaced By 7	Available Replaces 6	Available Replaces 4	Available

BRN Association rules

A major area to consider is the determination of the validity of the details received through one or more BRN at the time of the switch. The fields common to BRN and Switch notification are the following –

- MPRN
- Shipper
- Supplier
- Switch effective date (Optional)
- CSS reference (Optional)

The Association priority of the switch and the BRN will follow the below table sequence

BRN Association Priority				
	1	2	3	4
MPRN	✓	✓	✓	✓
Supplier	✓	✓	✓	✓
Shipper	✓	✓	✓	✓
CSS Ref	✓	✓	X	X
Eff Date	✓	X	✓	X

Association of Settlement Data - Example

CSS Registration Sync Message

CSS Ref	9876
MPRN	1234
Supplier	XYZ
Shipper	UVW
Eff Date	02/6/19

CSS Change of Shipper Event Message

CSS Reg Ref	9876
MPRN	1234
Event Eff. Date	02/6/19
Event Shipper	UVW

Supplier will be derived based on the registered supplier for the CSS Registration Reference provided

Association of Settlement Data - Example

Matches on all five key attributes

		Arrival Sequence				
Attribute	Optionality	3	5	7	8	9
MPRN	M	1234	1234	1234	1234	1234
Shipper	M	UVW	UVW	UVW	UVW	UVW
Supplier	M	XYZ	XYZ	XYZ	XYZ	XYZ
Eff Date	O	-	01/6/19	02/6/19	02/6/19	03/6/19
CSS Ref	O	-	-	9876	-	-
RRN Ref	C	-	ABC	-	-	-

Association of Settlement Data - Example

If 7 hadn't arrived and therefore we still had 6 'on the shelf' then a match is made on MPRN, Shipper, Suppler and CSS Ref

		Arrival Sequence				
Attribute	Optionality	3	5	6	8	9
MPRN	M	1234	1234	1234	1234	1234
Shipper	M	UVW	UVW	UVW	UVW	UVW
Supplier	M	XYZ	XYZ	XYZ	XYZ	XYZ
Eff Date	O	-	01/6/19	-	02/6/19	03/6/19
CSS Ref	O	-	-	9876	-	-
RRN Ref	O	-	ABC	-	-	-

Association of Settlement Data - Example

With neither 6 or 7 then match on MPRN, Shipper, Suppler and Effective Date

Attribute	Optionality	Arrival Sequence			
		3	5	8	9
MPRN	M	1234	1234	1234	1234
Shipper	M	UVW	UVW	UVW	UVW
Supplier	M	XYZ	XYZ	XYZ	XYZ
Eff Date	O	-	01/6/19	02/6/19	03/6/19
CSS Ref	O	-	-	-	-
RRN Ref	O	-	ABC	-	-

Association of Settlement Data - Example

Without 6, 7 or 8 then match on MPRN, Shipper, Suppler only

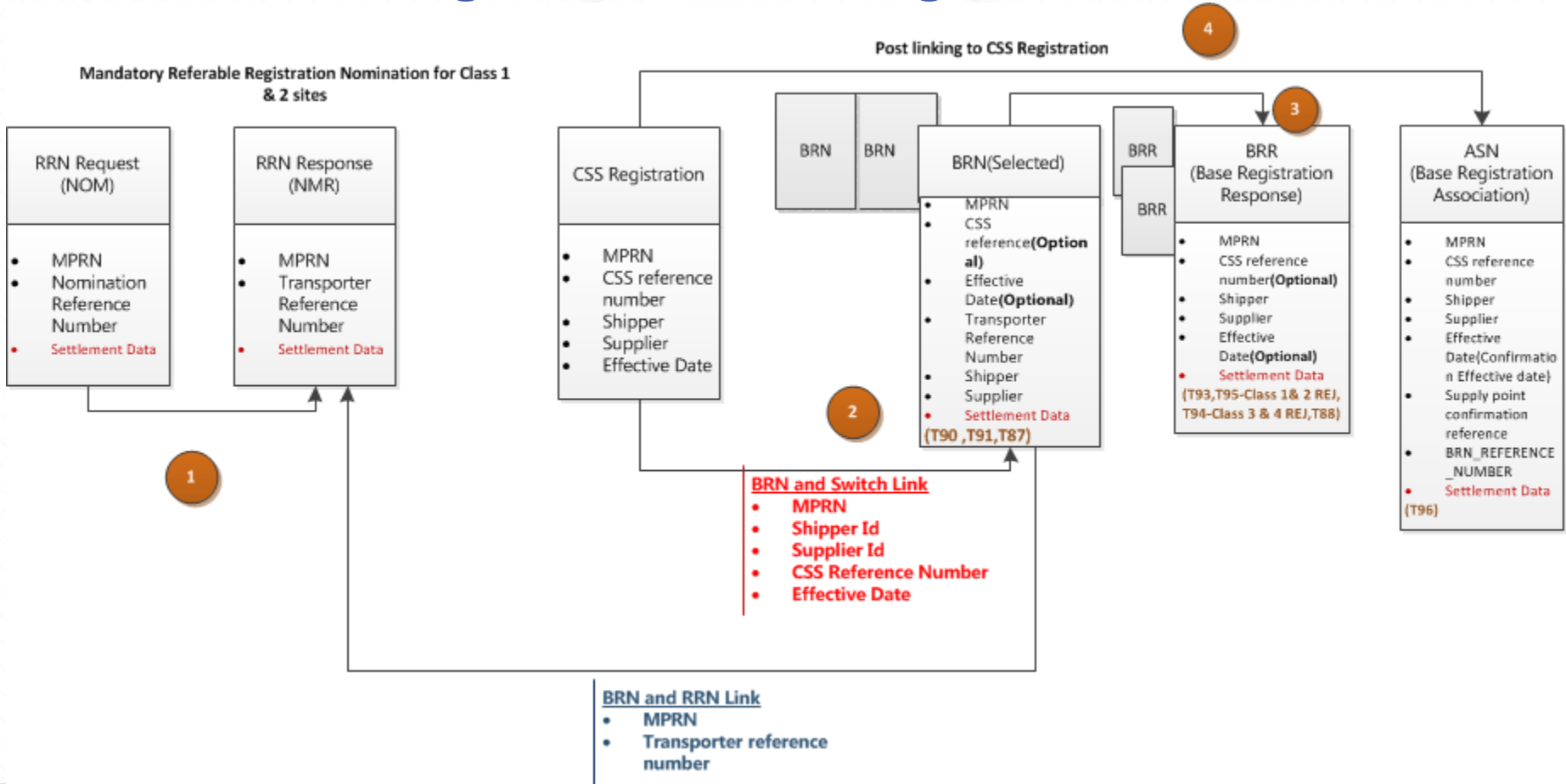
Attribute	Optionality	Arrival Sequence		
		3	5	9
MPRN	M	1234	1234	1234
Shipper	M	UVW	UVW	UVW
Supplier	M	XYZ	XYZ	XYZ
Eff Date	O	-	01/6/19	03/6/19
CSS Ref	O	-	-	-
RRN Ref	O	-	ABC	-

Finally if there is not match found then defaults will be applied

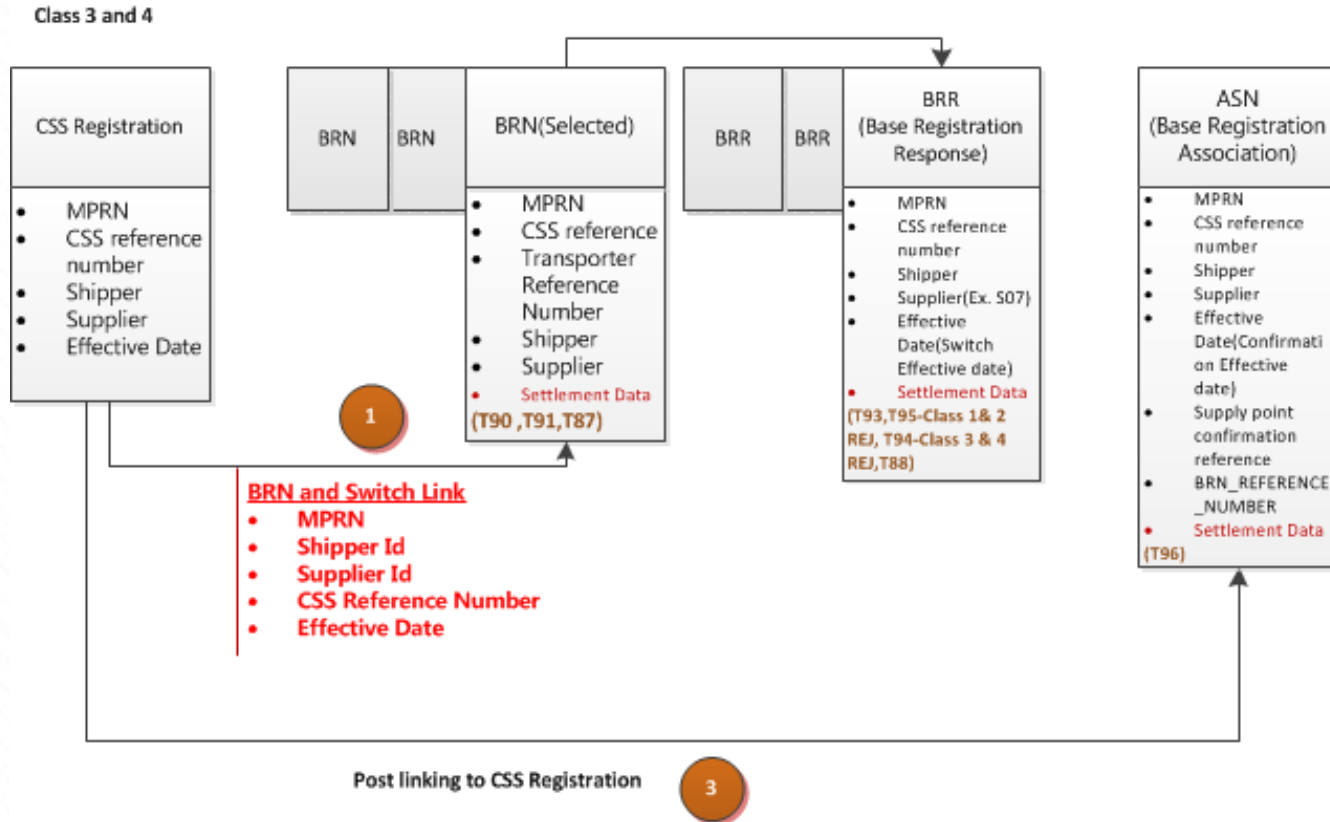
BRN Selection Logic

Fields	Fields Match for Replacement	Action
When 3 fields received	When (MPRN + Shipper +Supplier) exact match	Replace
When 4 fields received	When (MPRN + Shipper +Supplier + RRN Ref) combination match with existing BRN 3 mandatory fields	Replace
When 4 fields received	When (MPRN + Shipper +Supplier +CSS Ref) combination exact match	Replace
When 4 fields received	(MPRN + Shipper +Supplier +Effective Date) combination exact match	Replace
When 5 fields received	(MPRN + Shipper +Supplier +RRN No + Effective Date) combination match with existing BRN with 4 fields (MPRN + Shipper +Supplier +RRN No) or fields (MPRN + Shipper +Supplier +Effective Date)	Replace
When 5 fields received	(MPRN + Shipper +Supplier + Effective Date+ CSS Ref) combination match with existing BRN with 4 fields (MPRN+ Shipper+ Supplier + CSS Ref)	Replace
When 5 fields received	(MPRN + Shipper +Supplier+ CSS Ref+ Effective Date) combination exact match	Replace
When 6 fields received	(MPRN + Shipper +Supplier+ CSS Ref+ Effective Date+ RRN Ref) combination exact match	Replace

BRN Linking with the CSS Registration with RRN

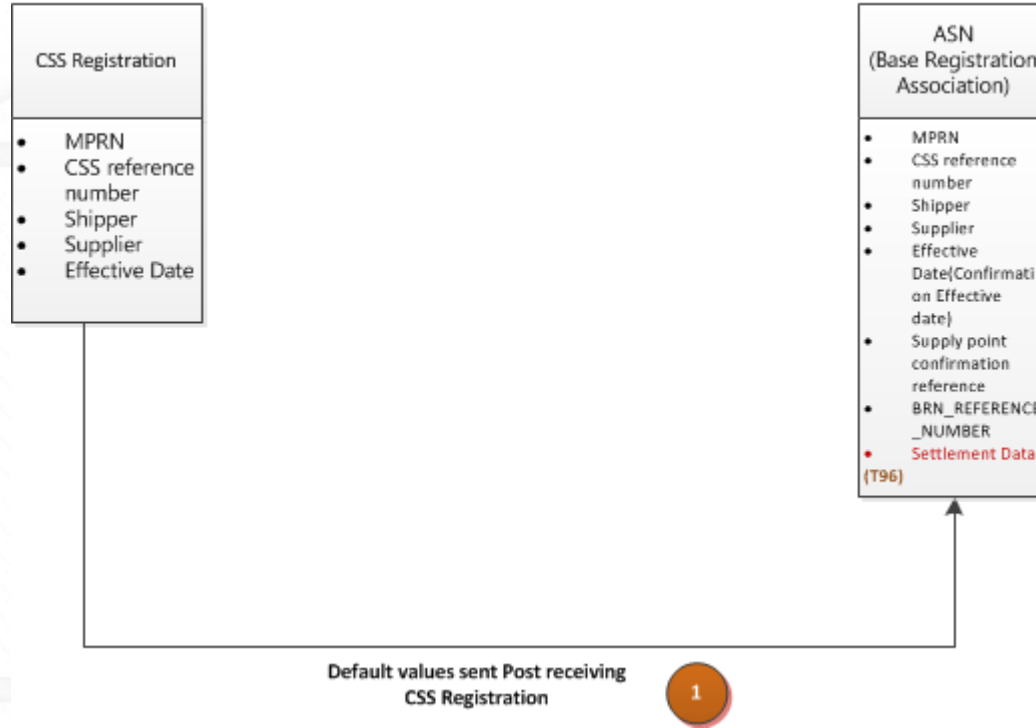


BRN Linking with the CSS Registration where no RRN

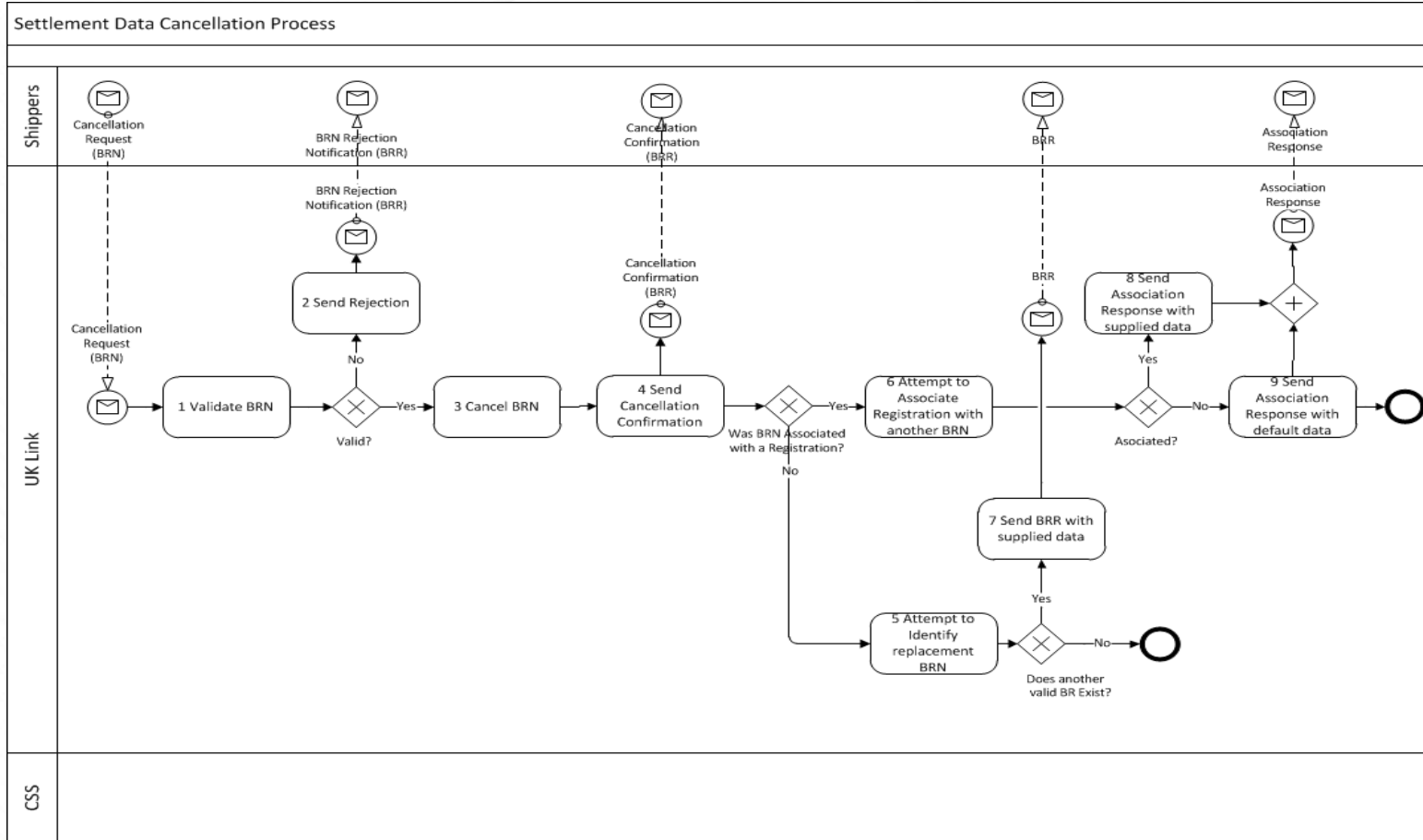


Default Association Post Registration where a BRN not submitted

All Class



Settlement Data(BRN) Cancellation Process



BRN Association rules

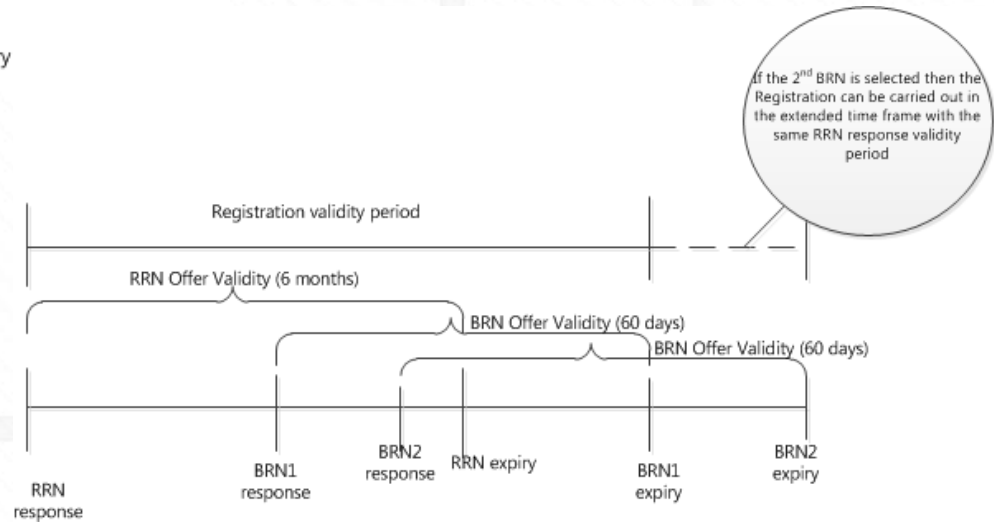
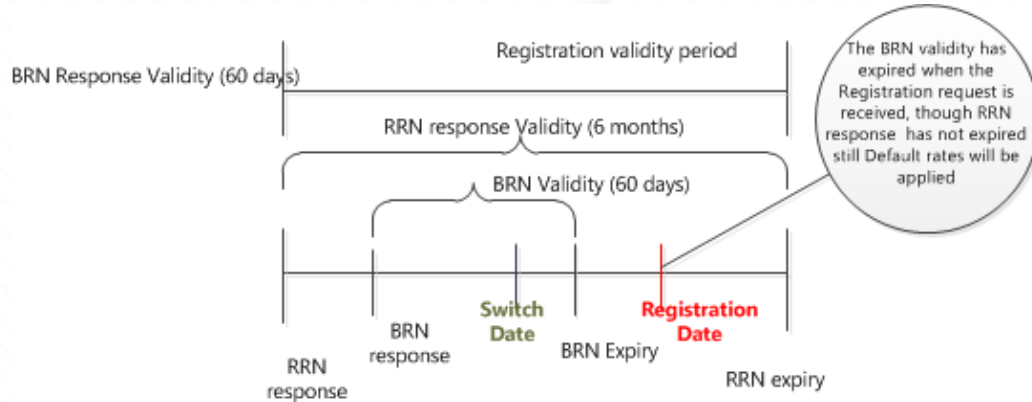
A major area to consider is the determination of the validity of the details received through one or more BRN at the time of the switch. The fields common to BRN and Switch notification are the following –

- MPRN
- Shipper
- Supplier
- Switch effective date (Optional)
- CSS reference (Optional)

The Association priority of the switch and the BRN will follow the below table sequence

BRN Association Priority				
	1	2	3	4
MPRN	✓	✓	✓	✓
Supplier	✓	✓	✓	✓
Shipper	✓	✓	✓	✓
CSS Ref	✓	✓	X	X
Eff Date	✓	X	✓	X

RRN and BRN response validity scenarios



Different Scenarios on BRN association and offers

Serial Number	Class	RRN Response	BRN	Logic for Association
1	1 or 2	1 or more valid offers	With an RRN Response Reference(populated in transporter Nomination reference)	Use values from the offer referred to in BRN
2	1 or 2	No valid RRN Resp. (e.g., due to expiry, ratchet, and RRN not submitted)	No BRN (as BRN would have been rejected)	Use default values
3	1 or 2	1 or more valid RRN Resp.	Multiple BRN	Use matching process described earlier to link a BRN. Use values from the offer referred to in the selected BRN
4	1 or 2	1 or more valid RRN Resp.	No BRN received	Use default values
5	Class 3 or 4	Not applicable	One BRN	Use values from the BRN
6	Class 3 or 4	Not applicable	Multiple BRN	Use matching process described earlier to link a BRN.
7	Class 3 or 4	Not applicable	No BRN	Use default values

BRN(.BRN) file format Option1

Create new record type and relevant fields for the BRN incoming file (Use K08 / S96 for MAM update)

- Create new records T90 for Class 1 and 2 and reuse corresponding S66 ,S67,S83 and S84 segment
- Create new records T91 for Class 3 and 4 and reuse corresponding S66 ,S67,S83 and S84 segment
- Create new record T87 for BRN cancellation
- MAM update through BRN can reuse K08 segment
- Use S96 segment to update the MAM(Need to change the optionality of the existing fields)
- New file type(.BRN) needs to be configured in SAP ISU, PO and Market flow
- Market sector code no longer part of the BRN as UKLink will receive it from CSS

Pros

- Distinct separation achieved between CSS sites Settlement to that of existing out of scope sites
- Normalisation achieved as only relevant filed details are only considered

Cons

- Shipper systems will need to align to the new interface and data fields
- For MAM update only new MAM Id is required which can be made effective from the switch effective date. Existing K08 record have multiple fields like MAM Effective date and Gas Act owner details which will not be relevant. In case MAM does not match the Switch effective date can result into BRN rejection

BRN(.BRN) file format Option2

Create new record type and relevant fields for the BRN incoming file (Introduce a filed MAM in new T90 and T91 record)

- Create new records T90 for Class 1 and 2 and reuse corresponding S66 ,S67,S83 and S84 segment
- Create new records T91 for 3 and 4 and reuse corresponding S66 ,S67,S83 and S84 segment
- Create new record T87 for BRN cancellation
- A MAM filed provided in T90 and T91 records
- New file type(.BRN) needs to be configured in SAP ISU, PO and Market flow

Pros

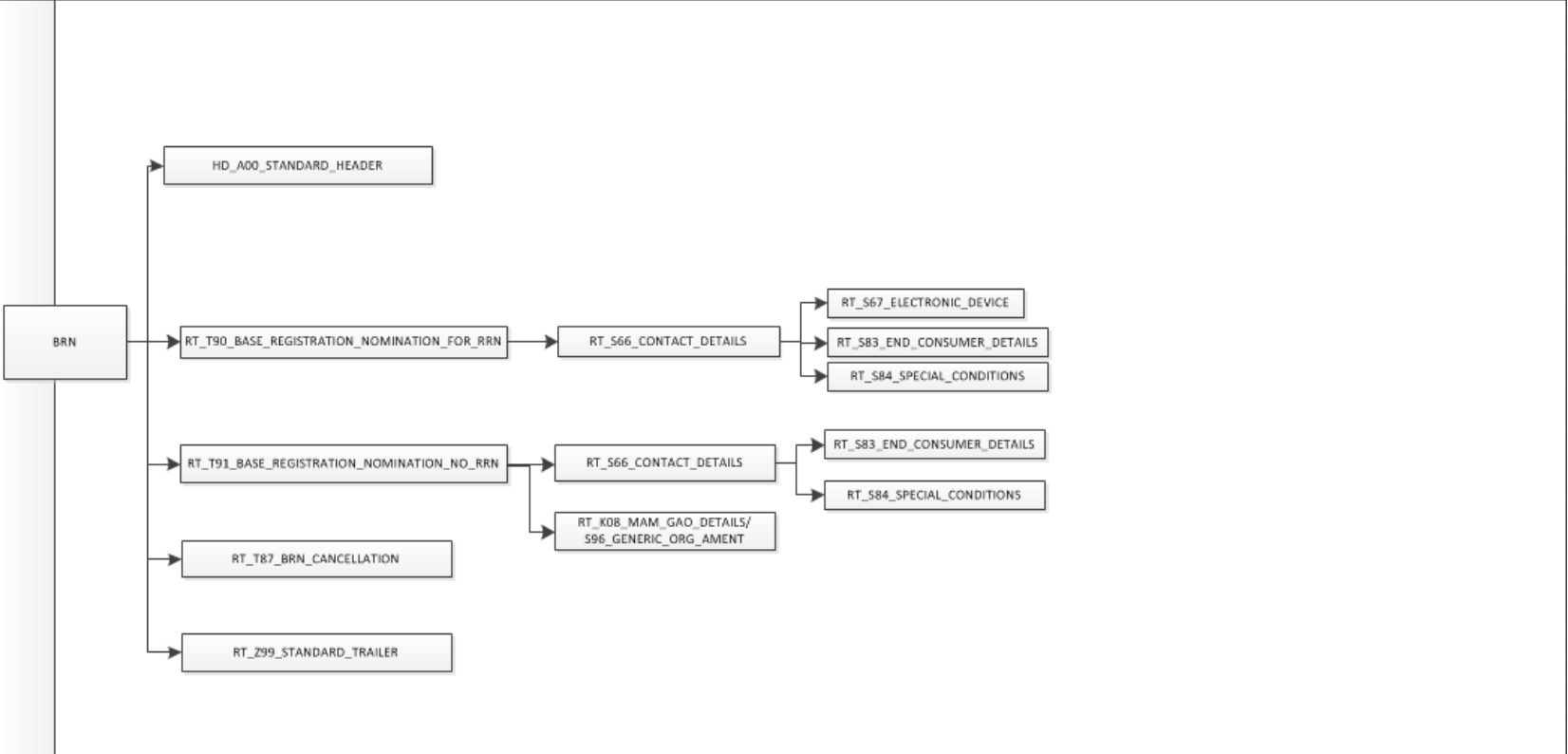
- Distinct separation achieved between CSS sites and retained confirmation process
- Normalisation achieved as only relevant filed details are only considered

Cons

- Shipper systems will need to align to the new interface and data fields
- Both LSP and SSP record field will have an optional MAM field which needs to be always considered though populated as blank even when not carrying out MAM update

BRN File Hierarchy

BRN file Hierarchy



BRN response(.BRR) file format

BRR response is sent out for each BRN submitted to acknowledge the receipt of the BRN request.

Create new record types and relevant fields for the BRR outgoing response file

- Create new record T93 for Class 1 ,2 ,3 and 4 similar to S07 segment and reuse S66 ,S67,S84, S70,S72, S75,K14,K85,S98, Q44, Q45, U73,U74,U75 and U90 etc. segment (We can normalise where ever required)
- Create new records for rejection response T95 (Rejection of T90) and T94 (Rejection of T91)
- The MAP if present is sent in the K85 Generic Org notification segment
- Create new T97 record to send cancel response in BRN request
- Use K09 or S96 segment for MAM response update(Need to change the optionality of the existing fields)
- New file type(.BRR) needs to be configured in SAP ISU, PO and Market flow

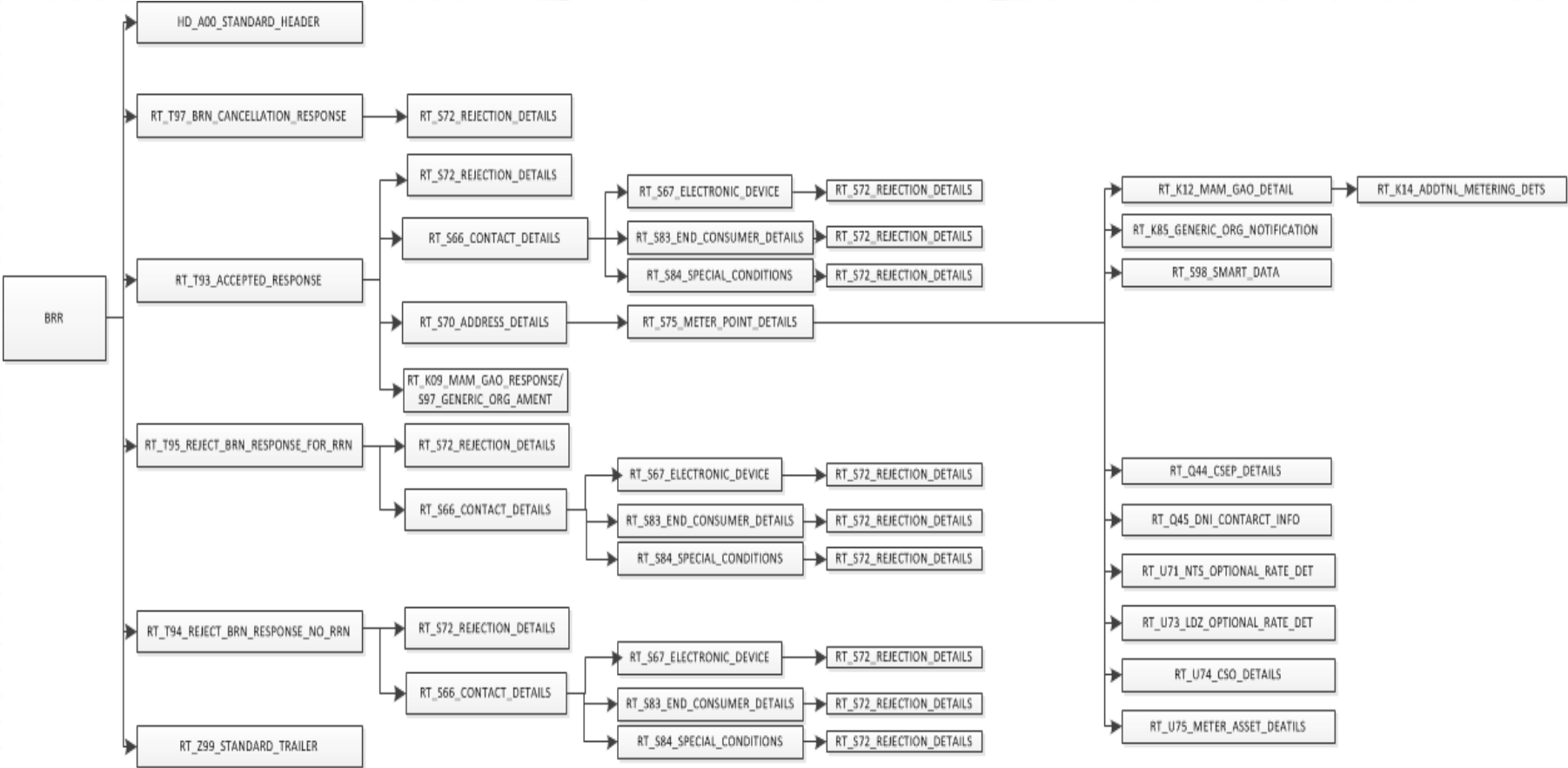
Pros

- Distinct separation achieved between CSS sites and retained confirmation process
- Normalisation achieved as only relevant filed details are only considered

Cons

- Shipper systems will need to align to the new interface and data fields

BRR File Hierarchy



BRR Response File data

Record	Data
Settlement Class	The Referable Registration Nomination response values will be passed else it's relayed back with the information passed in the BRN
DM SOQ/SHQ	The Referable Registration Nomination response values will be passed
Meter Read Frequency	Requested value will be played back
Transportation rates	The Transportation rates will be determined and passed
Optional Transportation Rates	The requested Transportation rates will be determined and passed
PSR / End Consumer Details	This data will be played back as fetched from the BRN request
LSP Emergency Contact Details	This data will be relayed back as fetched from the BRN request
Seasonal LSP Data	This data will be derived from the system. Also for large site it will be checked if the Seasonal LSP data is changed via Referable Registration Nomination

BRN Association (.ASN) file format

Association (.ASN) file is sent out once a valid link is established between the Switch and matching BRN. The first ASN file is sent out post the arrival of the validated Registration sync message. If no BRN is present then ASN file is sent out with the default values. If a better BRN is submitted before D-1 15:00 hrs BRN association will be performed with the held switch and the settlement details will be provided in the association file.

Create new record types and relevant fields for the ASN outgoing file

- Create new record T99 for Class 1 ,2 ,3 and 4 and reuse S66 ,S67,S84, S70,S72, S75,K14,K85,S98, Q44, Q45, U73,U74,U75 and U90 etc. segment (We can normalise where ever required)
- The MAP if present is sent in the K85 Generic Org notification segment
- New file type(.ASN) needs to be configured in SAP ISU, PO and Market flow
- Market sector code in T99 record will be fetched from the switch and passed

Pros

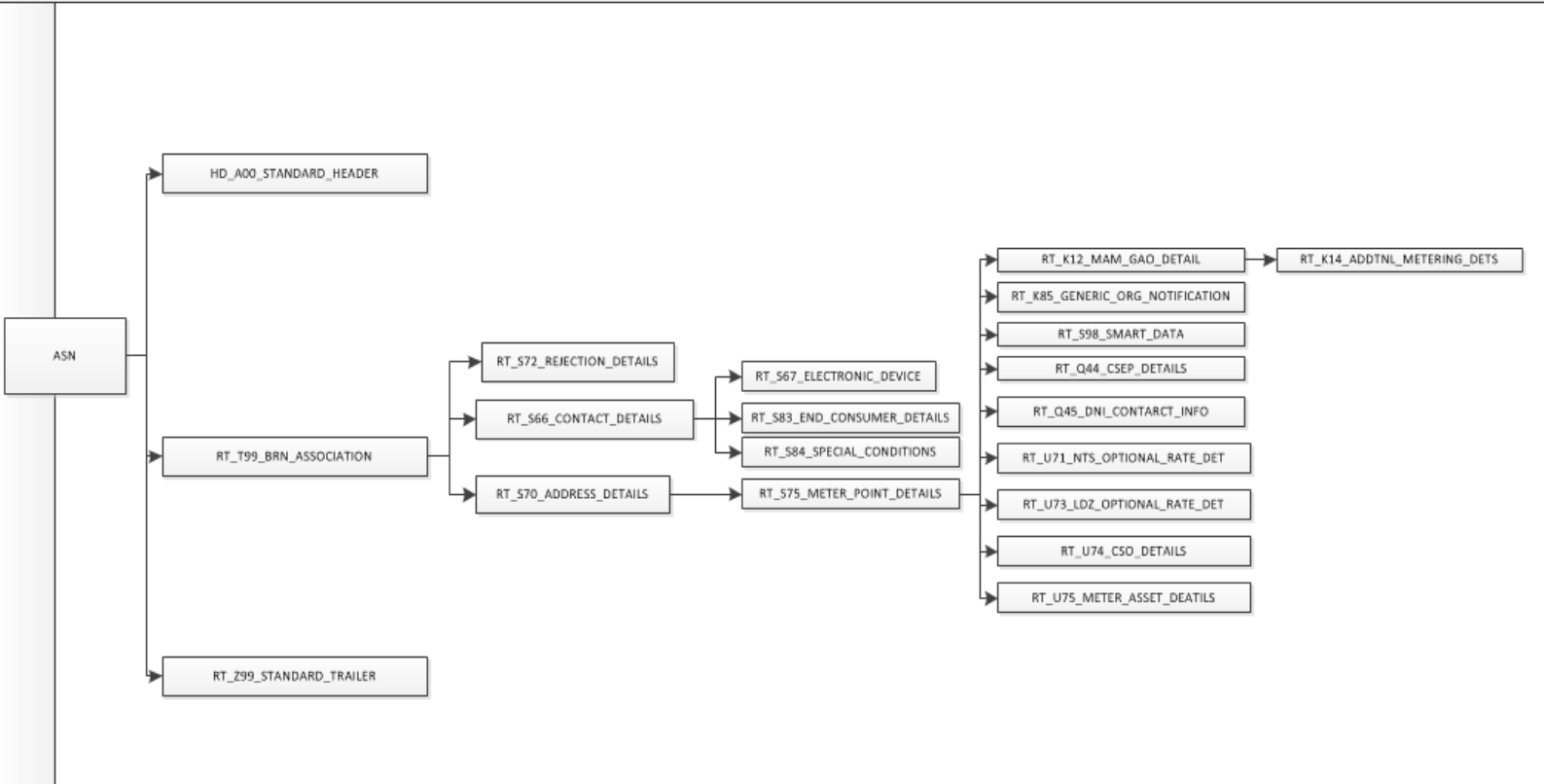
- Distinct separation achieved between CSS sites Settlement to that of existing NTS site confirmation process
- Normalisation achieved as only relevant filed details are only considered

Cons

- Shipper systems will need to align to the new interface and data fields

ASN File Hierarchy

ASN file Hierarchy



ASN Response File data (Default)

If there are no settlement details derived using the association logic, below default rules will be applied to support the switching process upon receipt of Registration sync message from CSS with Validated status

Segment	Content	Rule for Applying Default values
T90/T91	MRF_TYPE_CODE	Use Monthly where AQ > 293000 kWh. Otherwise, Annual.(For Class 4 only)
T90/T91	PREMISES_CUSTOMER_NAME	Remove existing value
T90/T91	SHIPPERS_CUSTOMER_NAME	Remove existing value
T90/T91	SUPPLIER_ORGANISATION_ID	Use value from CSS 'Registrationsync' message
T90/T91	MARKET_SECTOR_CODE	Use value from CSS 'Registrationsync' message
T90/T91	SUPPLY_METER_POINT_CLASS	Where Class 1 requirements applied as per UNC else default class 4
T90	SP_MANNED_24_HOURS_INDICATOR	Remove existing value

ASN Response File data (Default)

Segment	Content	Rule for Applying Default values
S48	REQUESTED_DM_SOQ	Use existing value from meter point (Class 1 & 2)
S48	REQUESTED_DM_SHQ	Use existing value from meter point (Class 1 & 2)
S48	SEASONAL_LSP_INDICATOR	Use existing value from meter point
S48	SEASONAL_LSP_PERIOD_START_MONTH	Use existing value from meter point
S48	SEASONAL_LSP_PERIOD_END_MONTH	Use existing value from meter point

For LSP sites, there is a requirement that the emergency contact details should continue to be available for the Networks even where the new shipper hasn't provided that. The contact type is 'EMR' for emergency contacts

Rules around BRN Validation

Sno	Check Performed
Rule 1	For Class 1 and 2 sites if there is no linking RRN in the submitted BRN then BRN will be rejected with reason NOM00001 “Transporter Nomination reference not found”
Rule 2	For Class 1 and 2 sites if we receive a BRN with “nomination_reference” as space or 0 this will be rejected with reason NOM00011 “Transporter Nomination reference not provided”
Rule 3	If the RRN offer has expired and post that a BRN is received for the Offer then the BRN will be rejected with the reason OFF00012 “Offer has expired”
Rule 4	For Supplier change event/Initial Registration, If there is no BRN present before the BRN gate closure time D-1 15:00 hrs. This check will be carried out post D-1 15:00 hrs “BRN association job”. The Association response file(.ASN) will be sent out with the default values
Rule 5	For Shipper change event, If there is no BRN before the BRN gate closure time D-1 17:00 hrs. This check will be carried out post notification (around 17:40). The Association response file(.ASN) will be sent out with the default values
Rule 6	The BRN effective date cannot be a date today or prior. A error message will be sent in the response with this reason code

New Error Messages

Error Code	Error Description
BRN00001	The BRN effective date cannot be a date today or prior

System Impact Assessment

	SAP ISU	SAP PO	Marketflow
System Component:	SPA	Configuration	Configuration
Development Type:	Code Change	Configuration code	Configuration Code
Impacted User(s):	Shippers	Shippers	Shippers
Build Type:	3 New Interfaces for Shippers	3 New Interfaces for Shippers	3 New Interfaces for Shippers
Change Description:	3 new interfaces will be built Interface 1 - To receive the settlement details(Base Registration Nomination) Interface 2 - To send the response to shippers Interface 3 - To send the Association to shippers	System will be configured to cater the 3 new interfaces between ISU and marketflow	System will be configured to cater the 3 new interfaces between ISU and marketflow
Requirement Clarity:	A	A	A
Change Complexity:	A	G	A
Integration Complexity:	A	A	A
Test Data Prep Complexity:	G	G	G
Test Execution:	A	A	A
Regression Testing Impact:	G	G	G
Performance Impact:	A	A	A

Summary of Key Changes

- For Class 1 and 2 Transporter Reference Number is mandatory to be provided in the BRN to link it to an Referable Registration Nomination response
- Introduction of 3 new interfaces BRN , BRR (BRN Response) and ASN (Association)
- Introduction of new record types for the new interfaces and re-use of the existing record types like S66 ,S67,S84, S70,S72, S75,K14,K85,S98, Q44, Q45, U73,U74,U75 and U90
- Rules of linking the BRN and the Registration request
- Introduction of the business rules around the BRN acceptance and rejections
- New rejection codes pertaining to the BRN rejection

The background features a faint, light-colored outline of a house with a gabled roof. Inside the house, there is a large window divided into five vertical panes. The text 'Future Topic Design Questions' is centered over this window area. A solid blue horizontal bar is located at the very top of the image, and a solid cyan horizontal bar is at the very bottom.

Future Topic Design Questions

Discussion Points

- RRN (NOM) file submission rules
- Initial MAP ID Population
- Opening Meter Reads
- Market Trials



Data Cleansing Update

Data Cleansing Update

Data Topic	Responsibility	Current Status (April)
Plot to Postal Addresses	Shipper	BAU process (GT sites only) – monthly portfolio issue to Organisations where plot addresses exist within their portfolio Shipper Total – 14,205 Unregistered Total – 8,597
Address Data - Quality	Xoserve	First reports are due to be issued with your next plot to postal reports
Shipper/Supplier Mapping	Shipper	Being progressed via Xoserve Customer Lifecycle Team and report through SPAA
MAP ID	Xoserve / MAPs	XRN 4780 allocated to July minor release to enable MAP ID to be stored against a meter where provided within an RGMA flow. Working with MAPs to establish initial population, currently targeted for Nov 19.



A.O.B.

DSG CSSC Meetings and Proposed Topics

DSG Meeting		Provisional Agenda
3	26/06/2019	Meter Point Creation
		Gemini
		Reporting
4	11/07/2019	Supplier Switching
		Change of Shipper
		Opening Reads
5	25/07/2019	Shipper Withdrawals
		Forced Registration
		Bulk Transfers
6	16/08/2019	Data Enquiry
		File Formats & APIs
7	04/09/2019	<i>Contingency</i>
8	17/09/2019	<i>Contingency</i>