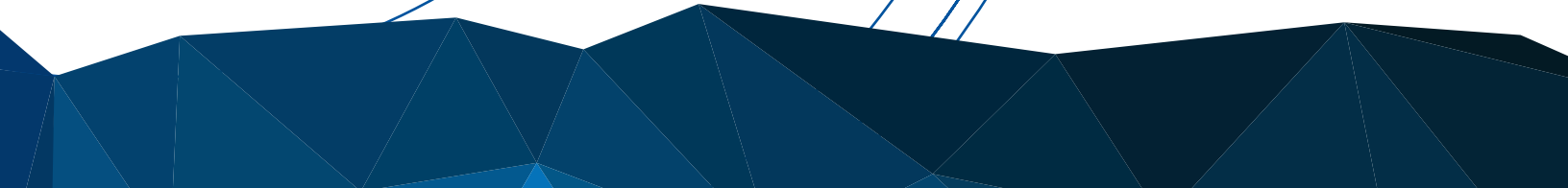
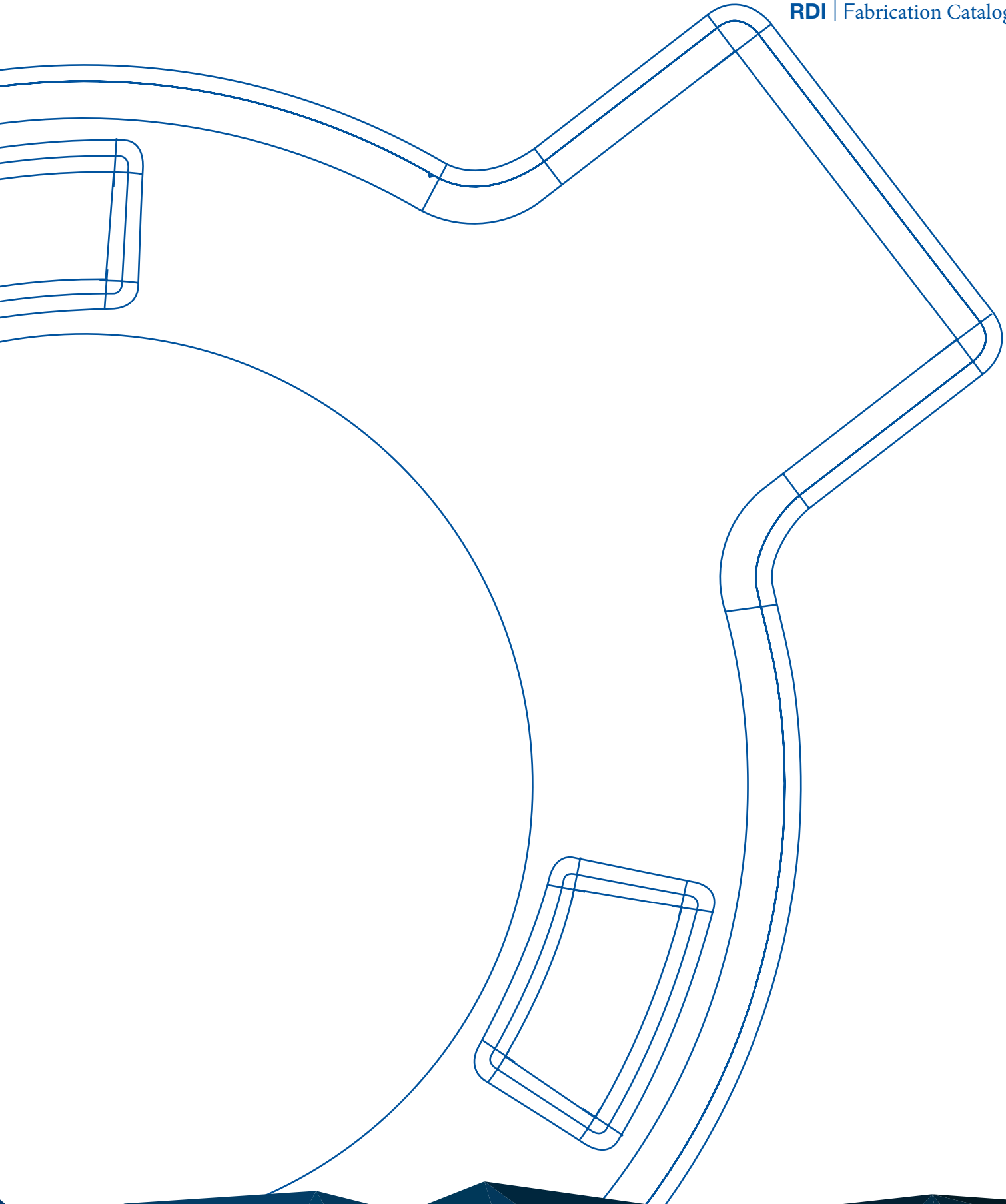




**REDI**

Fabrication Catalogue





## About RDI

RDI is a North American manufacturer of high pressure and low pressure unionized piping and manifold systems, with headquarters in Alberta. RDI also offers full-service Inspection and Recertification facilities strategically located throughout Canada and the US. We provide our clients with product sales, custom design and fabrication services, and complete aftermarket service and support for all pressure pumping and flow control equipment.

RDI's Engineering and Design department utilizes the latest technologies in developing and maintaining product standards. RDI is proud to have achieved ISO certification and API licensing, standards critical to meeting our stringent quality objectives. In collaboration with Engineering and Design, RDI's Welding and Fabrication facility manufactures flowline packages, custom skids, and custom orders. Whatever the request, RDI makes it happen.

RDI's Inspection and Recertification facilities are located in Alberta, Pennsylvania, Colorado, North Dakota, Wyoming and Texas. All inspections and recertifications are completed by highly qualified technicians. Once tested, all equipment is entered into our Iron Management System, which allows clients to track asset service histories online.

At RDI, our mission is to provide new and existing clients with on time delivery of quality products and services while continually pursuing customer and employee excellence. When you choose RDI, you are working with the preferred North American manufacturer of flow control products, a company that provides unmatched equipment quality and reliability.



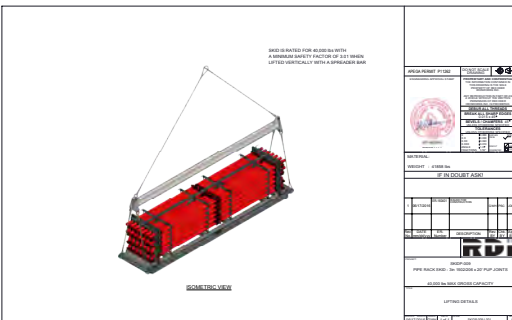
## Table of Contents

- 4. Welding, Engineering & Custom
- 5. Test Separators
- 6. Sand Separators
- 7. High-Low Pressure Separators
- 8. Wellhead Production Trees

## Welding, Engineering & Custom Fabrication

RDI's on-site Welding and Fabrication facility allows us to focus on customer requirements while utilization of the SMAW, GMAW and FCAW processes enable us to tackle almost any fabrication request with accuracy and efficiency. RDI produces low pressure flowline packages and fittings in various sizes and ratings. Along with that, RDI manufactures custom manifold and pipe skids – making us your one-stop-shop. RDI Oilfield Fabrication is a coded facility on the Western Slope carrying both **ASME {U}** and **NBIC {R}** stamp certifications, accreditations from the American Society of Mechanical Engineers and the National Board of Boiler and Pressure Vessel Inspectors, for the manufacture and repair of coded pressure vessels

- Custom manifold and pipe skids
- API Q1, ASME B31.1 pressure vessels and ASME B31.3 process piping certified
- Flare Stacks
- On-Site Certified Welding Supervisor
- On-Site Certified Welding Inspector
- On-Site 800sqft Post Weld Heat Treat Oven
- Sand Catchers
- Production Equipment
- Separators - High and Low Pressure
- Non-Destructive Examination



# Test Separators

RDI Oilfield Fabrication separators come in a variety of sizes and pressure ratings:

Diameter:  
12" up to 96"

Length:  
4' up to 40'

Pressure:  
15 psi up to 1440 psi

\* RDI Oilfield Fabrication offers vessels as high as 10,000 psi, although they are not classified as test separators.

In house Engineered **ASME** calculations. Top notch quality program and nationwide shipping allows RDI Oilfield Fabrication to compete in every E&P play in the US.

Provided with or without internal coating. It is imperative that the interior of the vessel be properly prepared for coating otherwise it will not last. We can offer standard test separators or custom depending on your needs





# Sand Separators

At RDI Oilfield Fabrication we offer standard and deluxe sand separators. Removable inlet diverters can be offered to help with costly repairs in the future. Lead times often become the deciding factor when choosing which company to purchase from. Finding vessels readily available can happen, however they are used. When fabricating a new vessel the longest lead time is the material. Once the material arrives the actual time spent on fabrication is a third of the overall production timeline. Here at RDI Oilfield Fabrication we maintain raw material stock at our facility to get a jump start in this ever changing market. At RDI Oilfield Fabrication we can design and build any 10k ASME compliant Sand Separator. Most companies offer API compliant Separators, API has less of a safety tolerance than ASME. ASME is the industry leader and accepted vessel regulation agency. When you purchase a Sand Separator make sure you are getting a vessel that is -50F MDMT and 200F MAWT with a rating of at least 5,500 psi. Also as an added benefit for our clients, all RDI sand separators are built with corrosion tolerance to extend the lifespan of our vessels.

## Sand Separator Models:

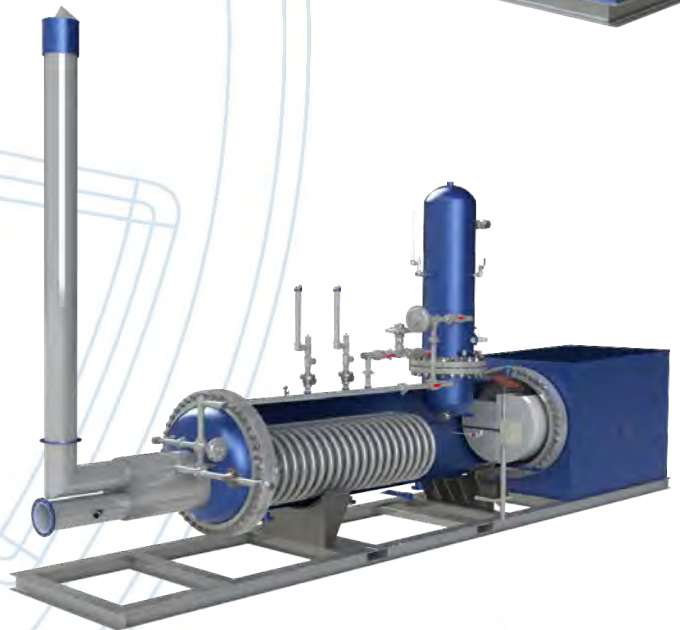
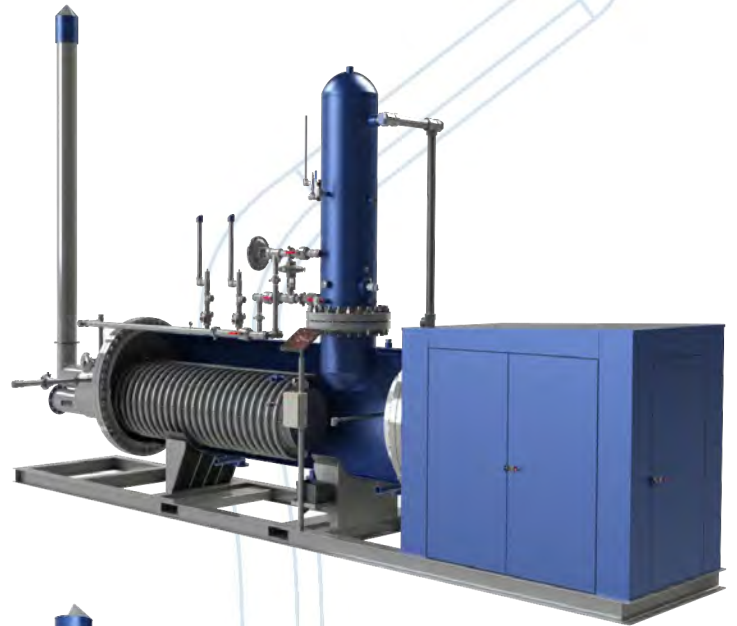
Available Pressures:	Available Diameters (dictated by pressure):	Available Lengths:
<ul style="list-style-type: none"> <li>• 1,000 PSI</li> <li>• 3,000 PSI</li> <li>• 6,000 PSI</li> <li>• 10,000 PSI</li> </ul>	<ul style="list-style-type: none"> <li>• 18"</li> <li>• 20"</li> <li>• 24"</li> </ul>	<ul style="list-style-type: none"> <li>• 8'</li> <li>• 9'</li> <li>• 10'</li> </ul>

RDI Oilfield Fabrication has optimized material selection and thickness within the ASME code boundary, to achieve maximum BBL Capacity at 24" diameter, compliant with both ASME/API.



## High-Low Pressure Separators

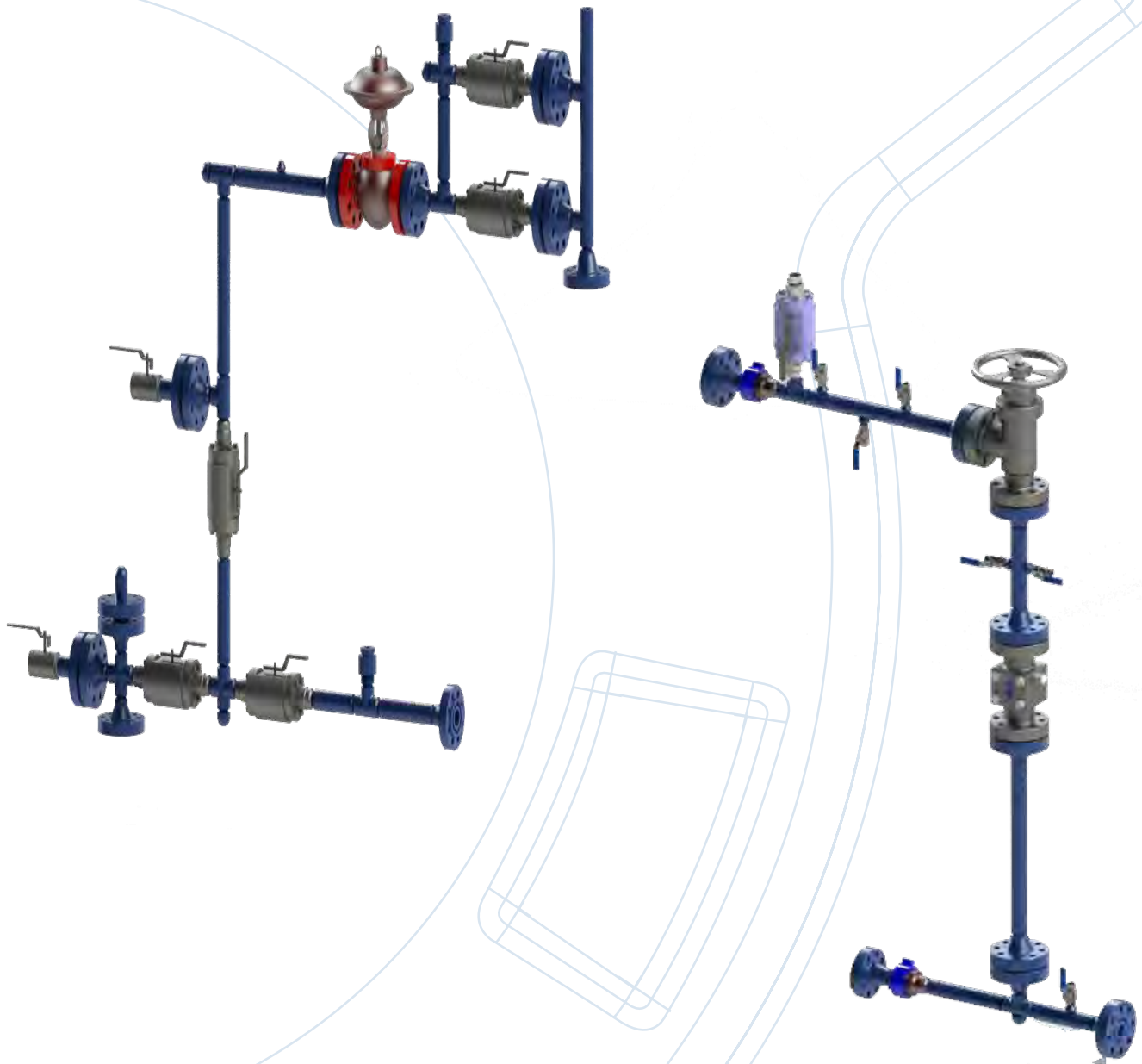
RDI Oilfield Fabrication also manufactures a full line of High-Low Pressure Separators that combine the benefits of a higher-pressure, two-phase separator with a lower-pressure, three-phase treater. At RDI Oilfield Fabrication we can engineer and produce a specific separator that meets your requirements or can build a unit based on your own designs. RDI's new patented design incorporates a new internal design that is 70% more efficient than all other current designs in the field today.





# Wellhead Production Trees

RDI Oilfield Fabrication designs and manufactures Wellhead Production Trees in all common industry sizes, pressure ratings and configurations. Our extensive inventory includes flanges, adaptors, valves, chokes and other products as required by the customer. RDI can also design and custom build any production tree to specific customer specifications. RDI's Wellhead Production Trees also use our own lightweight and grease-able ball valves that have the ability to come with multiple end connections based on our clients needs. Customers can also buy repair kits for our ball valves which can be installed in-line in the field saving time and money.



# Locations



## **Red Deer, AB**

*Head office*

6430 Golden West Avenue  
Red Deer, AB T4P 1A6  
1-403-343-1141

## **Grande Prairie, AB**

#6, 10602 – 79 Avenue  
Clairmont, AB T0H 0W0  
1-780-830-5474

## **Casper, WY**

2727 N Poplar  
Casper, Wyoming 82601  
1-307-333-7437

## **Indiana, PA**

127 Raymond Drive  
Indiana, PA 15701  
1-724-465-6280

## **Minot, ND**

300, 205 – 42 Street SE  
Minot, ND 58701  
1-701-838-1044

## **Fruita, CO**

1115 – 16 Road  
Fruita, CO 81521  
1-970-243-5500

## **Frederick, CO**

4289 Commerce Drive  
Frederick, CO 80504  
1-970-534-3570