



CW/P

Gavilan Joint Community College District

Facilities Master Plan

April 17, 2017



Proven TEAM

CAMBRIDGE WEST PARTNERSHIP, LLC

- Educational & Facilities Master Planning
- Support for Accreditation
- Preparation of 5YCP, Report 17, IPP' s & FPP' s
- Excellent Reputation at the Chancellor' s Office
- Have qualified over \$600 million for State Funding

HPI ARCHITECTURE

- Over three decades of Programming, Planning & Design for Public & Private Colleges & Universities
- Recent involvement with 14 CA Community College Districts @ 22 Colleges
- Recent CA Community College Facilities Master Planning @ 11 Colleges
- More than 1,000,000 s.f. of CA Community College instructional and support space in the last 6 years

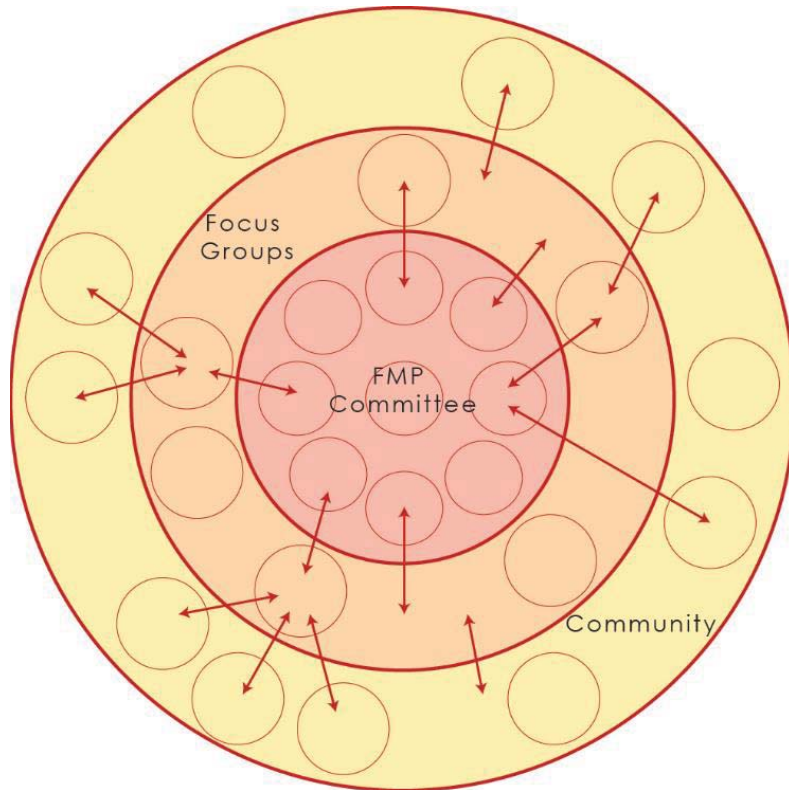
a data driven, community supported master plan

Our TEAM

Client and Project	CWP			HPI Architecture		
	CM Brahmhatt Managing Director	Joyce Black Partner/Project Manager	Fred Trap Senior Associate	Larry Frapwell PIC, Lead Planner	Megan Gaunce Project Manager	Woody Dike Planner/Landscape Architect
Bakersfield Community College - 2012 Educational/ Facilities Master Plan - 153 acres	X	X	X	X	X	X
Barstow Community College - 2016 Educational/ Facilities Master Plan	X	X	X	X	X	X
Cerro Coso Community College - 2012 Educational/ Facilities Master Plan - 340 acres	X	X	X	X	X	X
Coastline Community College - 2011 Facilities Master Plan - 16 acres	X	X	X	X	X	X
Evergreen Valley College - 2015 Educational/ Facilities Master Plan - 130 acres	X	X	X	X	X	X
Golden West College - 2011 Educational/ Facilities Master Plan - 124 acres	X	X	X	X	X	X
Orange Coast College - 2011 Facilities Master Plan - 164 acres	X	X	X	X	X	X
Palo Verde Community College - 2016 Educational/ Facilities Master Plan	X	X	X	X	X	X
Porterville Community College - 2012 Educational/ Facilities Master Plan - 70 acres	X	X	X	X	X	X
San Jose City College - 2015 Educational/ Facilities Master Plan - 70 acres	X	X	X	X	X	X
Southwestern Community College - 2013 Educational/ Facilities Master Plan - 156 acres	X	X	X	X	X	X

proven experience

Outreach PROCESS



THE MOST IMPORTANT TEAM

Facilities Planning Sub-Committee?

- Define Process
- Direction and Recommendations

Focus Groups

- Input and Direct Feedback
- Build Support Internally

Community

- Open and Transparent Process
- Accessible through District website

community supported master plan

Community ENGAGEMENT

tools we use



Surveys



Community Outreach



Hands-On Exploration

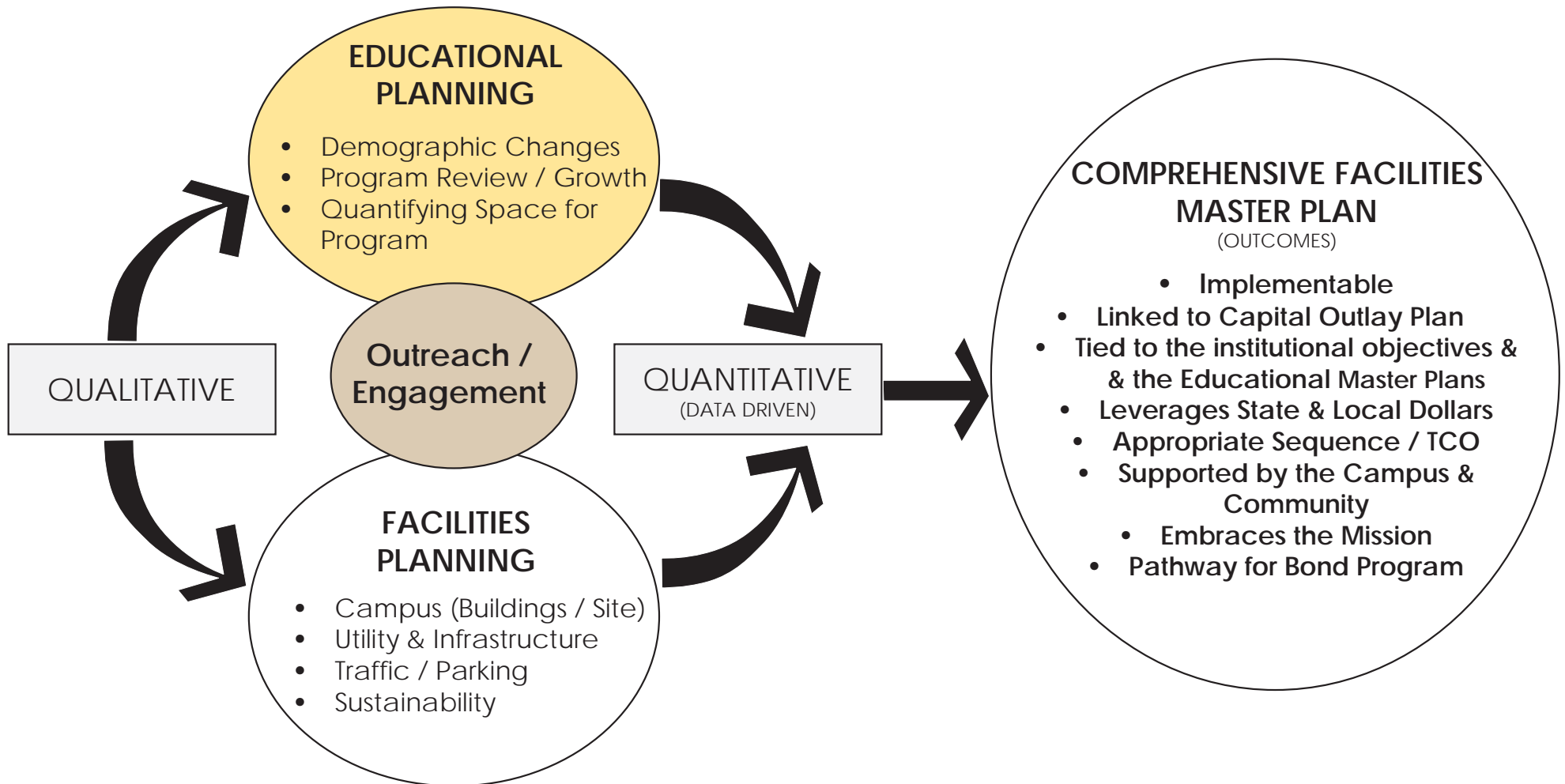


Small Group
Discussions



Workshops

Comprehensive Facilities Master Plan



Connection Between EMP & FMP

EMP Review

- Confirmation from faculty and academic administrators
 - Potential new programs of instruction
 - Changes to modes of delivery and pedagogy
 - Potential facilities implications

Connection Between EMP & FMP

- Review current data of space inventory in FUSION
- Develop a projection of potential future weekly student instructional contact hours by discipline
- Translate those projections into assignable square footage
- Incorporate current construction into future facilities needs
- Determine potential need for additional instructional space

Connection Between EMP & FMP

Using external data sources, but in collaboration with the Office Of Institutional Research

- Review and validate the demographic trends within the District service area
- Review and validate the analysis and discussion found in the College Fact book and other external scan research completed by the staff

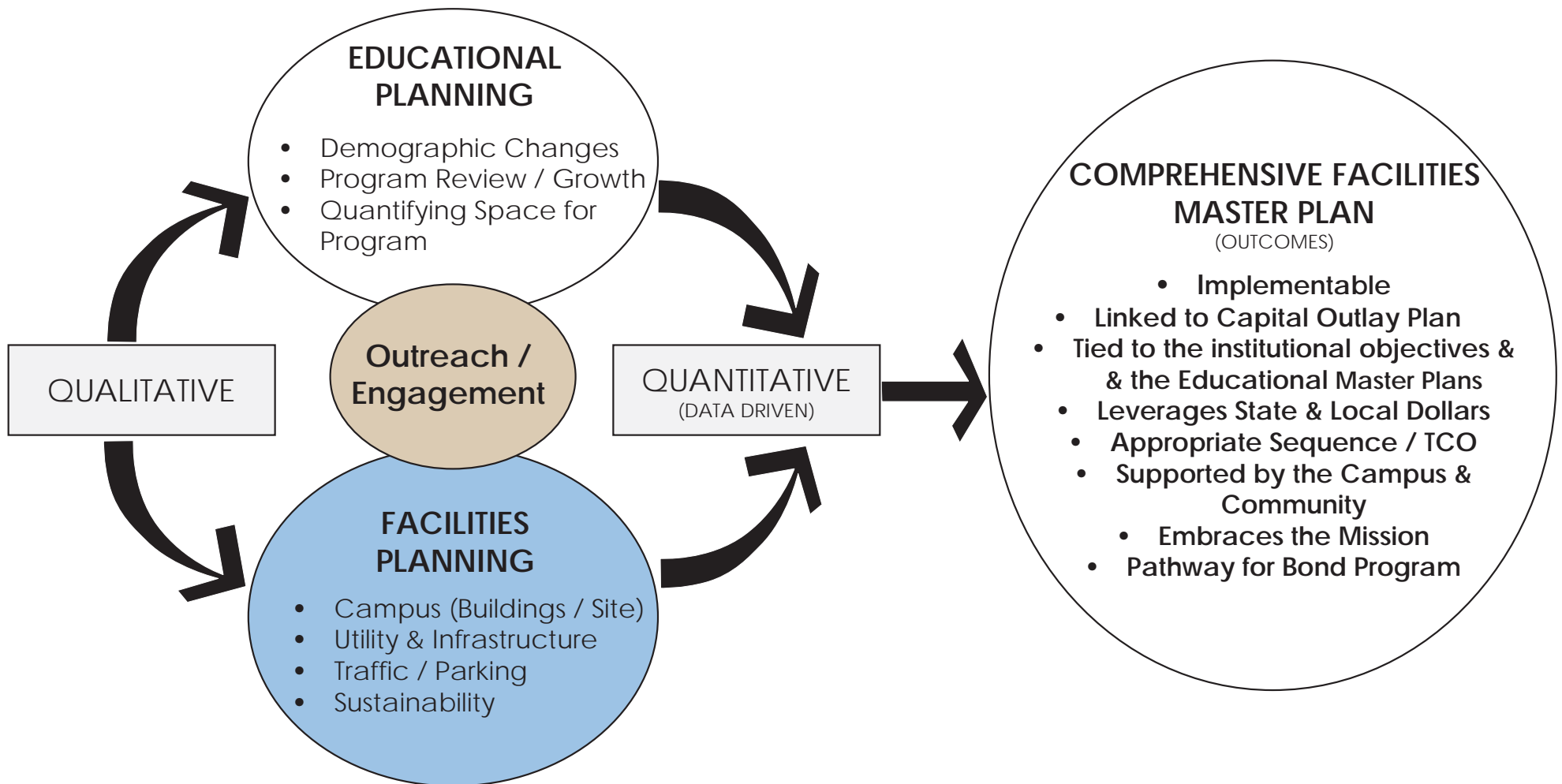
Connection Between EMP & FMP

EDUCATIONAL MASTER PLAN – FACILITIES MASTER PLAN LINKAGES

Division/ Area/ Unit	From EMP Growth Projections
Language Arts & Library Division	Enrollment growth projections to 2030 translate to a need for 10 additional classrooms . The need for a Foreign Languages Lab has been identified.
Math, Science, Engineering Division	Enrollment growth projections to 2030 translate to a need for 5 additional Math classrooms and a Biology Laboratory .
Nursing & Allied Health Division	Enrollment growth projections to 2030 translate to a need for 1 additional classroom for this division.
Social Sciences, Arts, Humanities, PE Division	Enrollment growth projections to 2020 translate to 9 additional classrooms for this division in the social sciences disciplines.

*Evergreen Valley College (SJECCD) 2015 EMP Results

Comprehensive Facilities Master Plan



APPROACH & METHODOLOGY

ASSESSING SYSTEMS

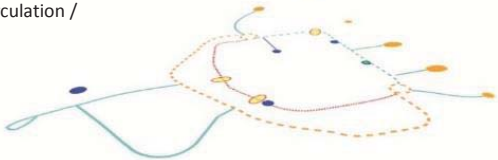
Pedestrian Circulation



Open Space



Vehicular Circulation / Service



Parking



Facilities



College



- Highest & Best Use of Existing & Planned Facilities
- Campus Zoning
- Vehicular Access & Circulation
- Parking
- Public Transportation
- Utilities & Infrastructure
- Pedestrian Circulation
- Open Space Character
- Sustainability
- Project Sequencing

APPROACH & METHODOLOGY

Assessing Systems



*Southwestern College 2013 FMP

APPROACH & METHODOLOGY

Visualization



*Orange Coast College 2011 FMP



Implementable Program of Work



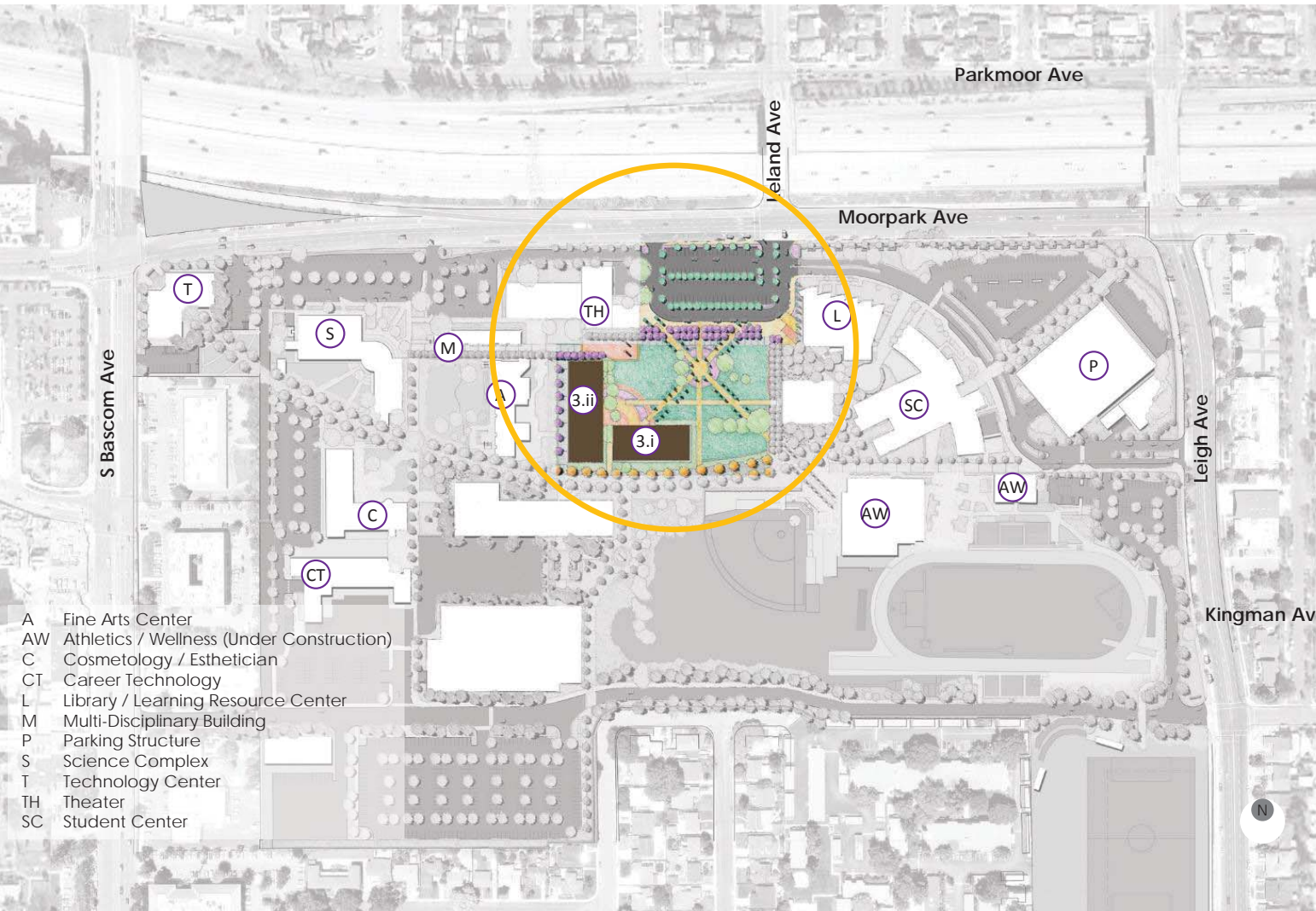
SJCC Program of Work

- 1a M&O / Reprographics
- 1b Cosmetology Expansion / Adaptive PE
- 2a CTE Building
- 2b Technology Center Renovation – Expansion of Dental and medical offices
- 3.i General Education Building Phase I
- 3.ii General Education Building Phase II
- 4 Jaguar Center
- 5 Drama / Theater Lobby
- 6 Parking Structure

- A Fine Arts Center
- AW Athletics / Wellness (Under Construction)
- C Cosmetology / Esthetician
- CT Career Technology
- L Library / Learning Resource Center
- M Multi-Disciplinary Building
- P Parking Structure
- S Science Complex
- T Technology Center
- TH Theater
- SC Student Center

-  Existing Building
-  New Construction
-  Repurpose

Initial Project Plan



3. General Education Building

Programs Phase I:

- Business Lecture
- Large Lecture
- Reading / Study Room
- Office
- Administrative Offices
- Campus IT

Programs Phase II:

- Lecture / Large Lecture
- Foreign Language Lab
- English Lab
- 4930 English Lab
- Science Labs
- Faculty Offices

Site Work:

- Removal of Business & GE Complex
- Improve circulation @Leland / Moorpark
- Expand / Improve Parking & Drop Off
- SJCC Quad

ASF / GSF / Mass:

- I: 27,000 ASF / 41,538 GSF / 3 Stories
- II: 40,640 ASF / 62,523 GSF / 4 Stories
- Project: 67,640 ASF / 104,061 GSF / 3-4 Stories

Vacates:

- Business Building
- General Education Complex

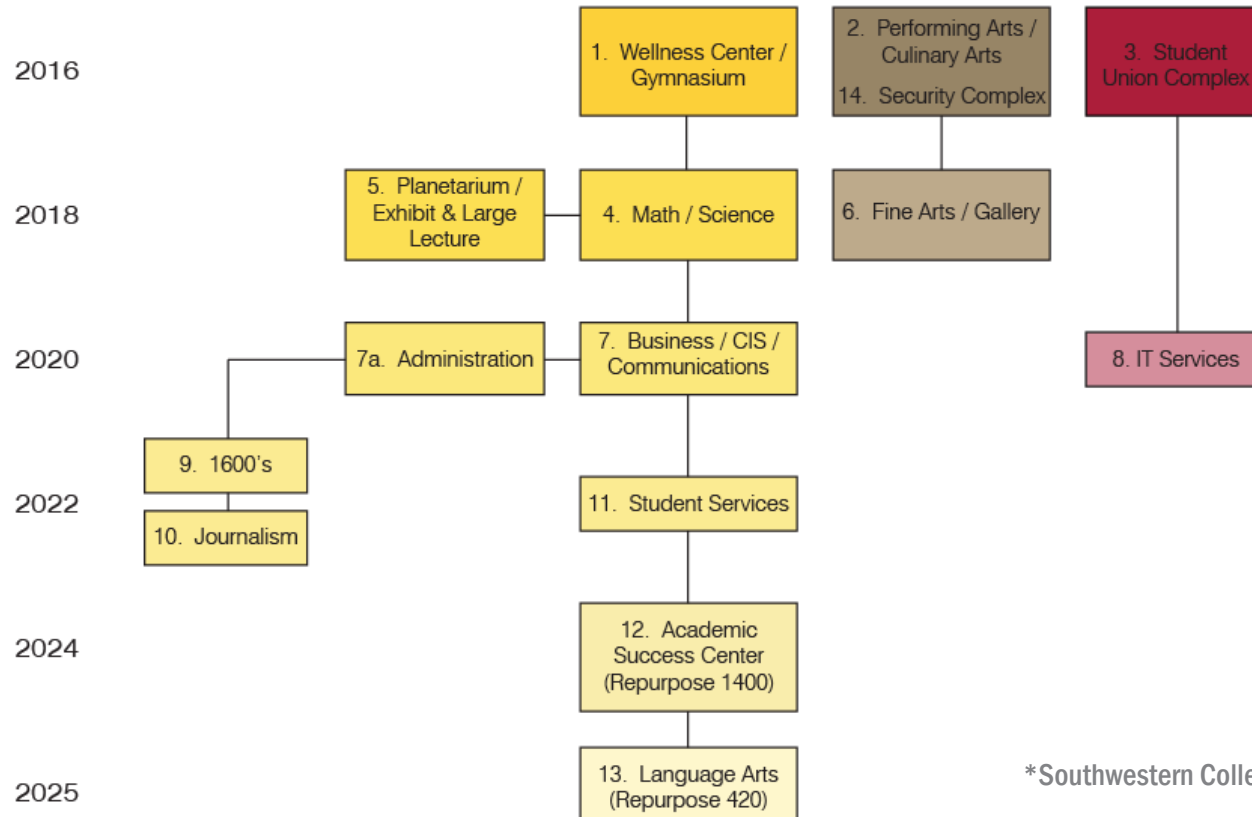
Project Sequence:

- Phased project: Phase 1 is on an open pad. Phase 1 replaces uses in Business Building, allowing Phase 2 to begin

APPROACH & METHODOLOGY

Project Sequencing

Construction Complete



*Southwestern College 2013 FMP

Success Story

Math / Science Complex

Buildings:

1. Math Science Building
2. Planetarium / Exhibit / Large Lecture Building

ASF / GSF / Mass:

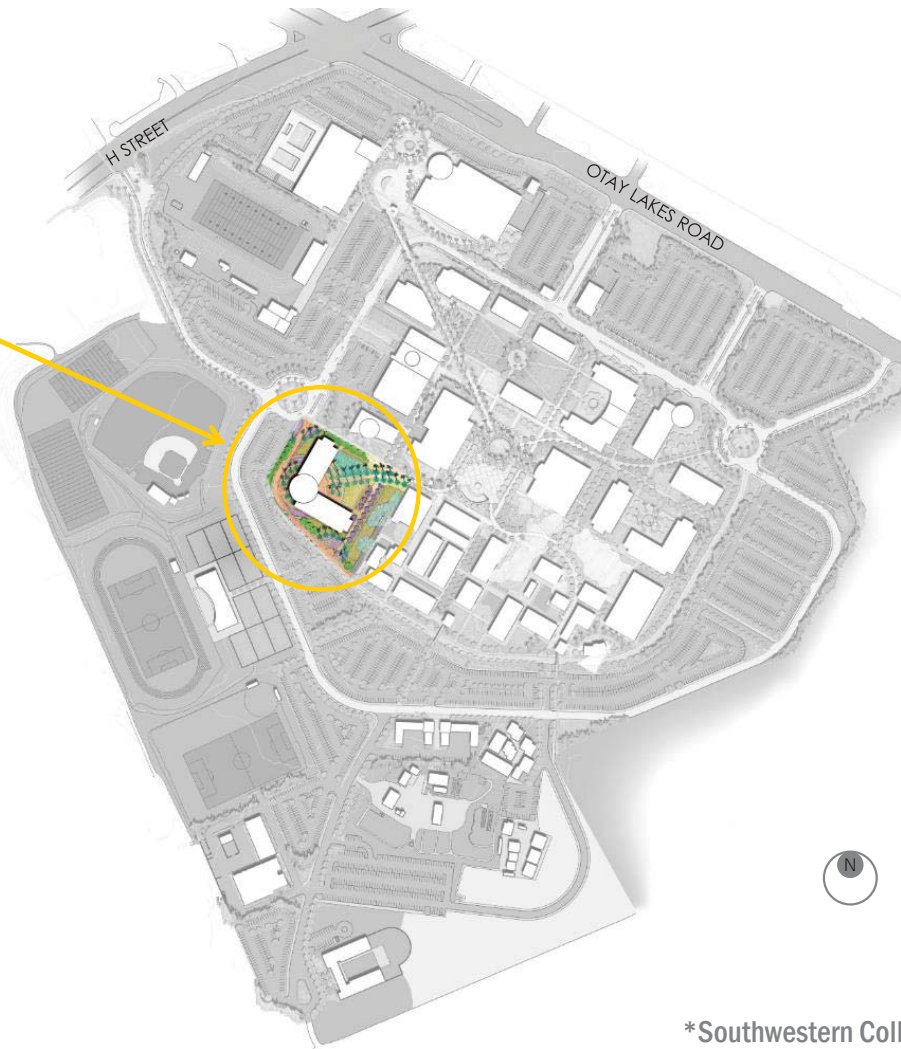
1. 59,720ASF / 91,880 GSF / 2 Stories
2. 7,300ASF / 11,250 SF / 1 Story

Timeline:

2016 – 2018

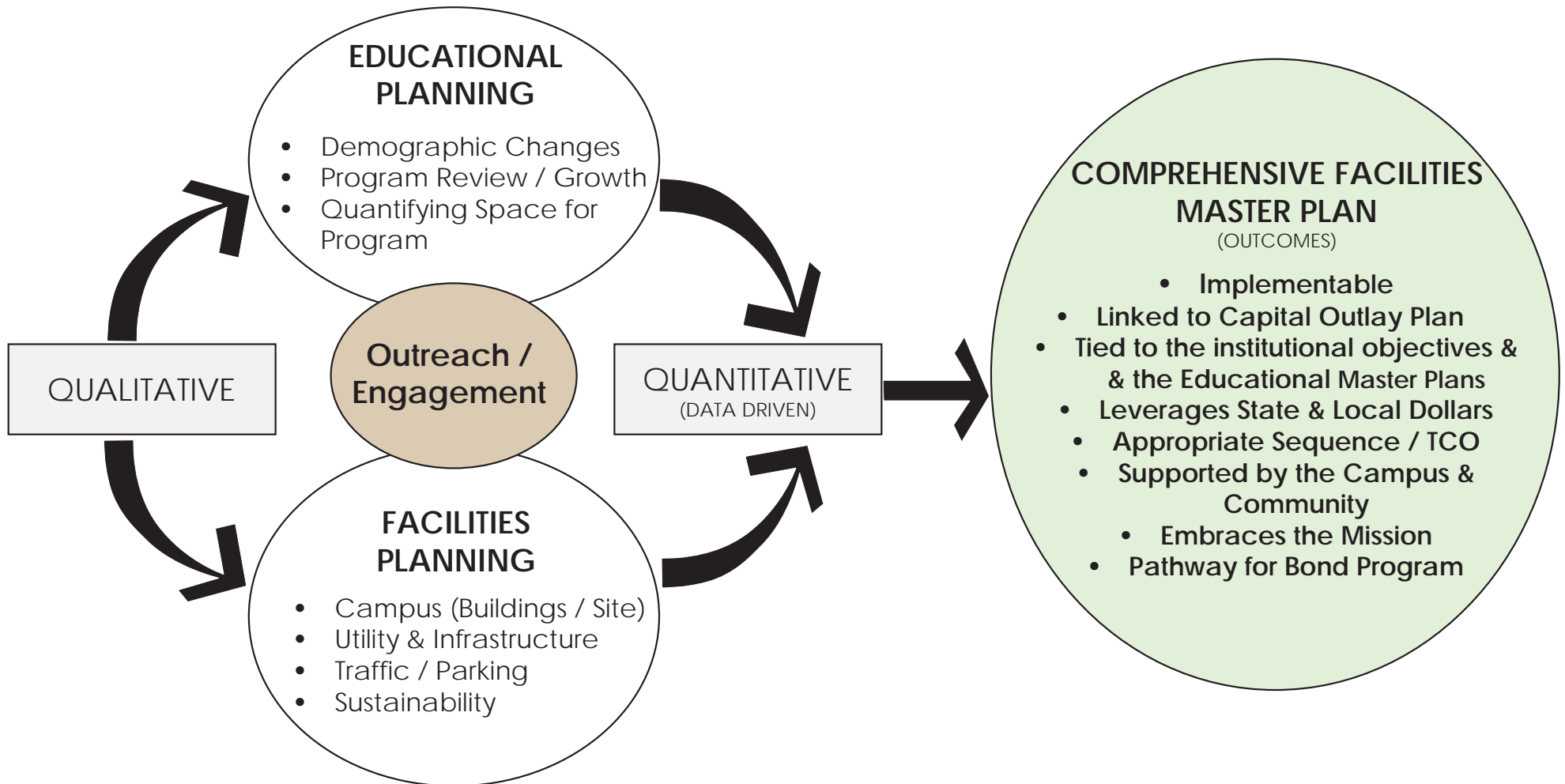
Vacates:

300's & Various Classrooms on Campus



*Southwestern College 2013 FMP

Comprehensive Facilities Master Plan



CWP / HPI TEAM

A data driven, visionary master plan that is:

- **supported by campus constituents and community**
 - **implementable**
 - **serves students and community**

Comprehensive Facilities Master Plan

