



FACOM NORDIC - ENG/FI

INDUSTRIAL CAMPAIGN

February 2016 - September 2016



NEW! SLS SERIES

FACOM SAFETY LOCK SYSTEM FOR TETHERED TOOLS

- CT100-140 - SLS belt 70-140cm metal buckle
- CT70-100 - SLS belt 70-100cm metal buckle
- CT-ACC - SLS belt accessory ring alone
- CT-ACC2M - SLS belt accessory ring with 2 carabiner
- LAN0.2 - SLS lanyard 20cm with 2 60mm screw carabiner
- LAN1.2 - SLS lanyard 1.2m with 2 80mm screw carabiner
- LAN-WRT1.2 - SLS wrist lanyard 1.2m with 1 60mm carabiner
- MOUSQ6X60SLS - SLS 60mm stainless steel carabiner
- MOUSQ8X80SLS - SLS 80mm stainless steel carabiner
- Safety - prevent dangerous tool drop when working at height
- Safety - prevent injury of user and colleagues
- Save money - No lost or damaged tools
- Save time - reducing time to search for tools
- 2 years warranty on the tethering SLS Ring & Wire (in case of breakage)
- Standard warranty of the product if the product breaks
- **Product is delivered with a testing certificate, graph of the testing, unique serial number, safety information**
- Strong ring and wire of the highest standards
- Crimped connection with a servo controlled press - always a perfect crimp
- Ensures full freedom of tool movement without twisting the lanyard
- Dual point safety buckle on the belt



CT70-100 / CT100-140 / CT-ACC / CT-ACC2M / LAN0.2 / LAN1.2 / LAN-WRT1.2 / MOUSQ6X60SLS / MOUSQ8X80SLS



CM.FC29PB – SOFT BAG BS.T20 WITH TOOLS

- Contains 29 pcs. tools
- 440.JP9 – 83SH.JP9 – 893.316 – 200C.32 – 192.16CPE – 170A – 601 – AS3.5x75 – AS4x100 – AS5.5x100 – ASD1x100 (PZ1) – ASD2x125 (PZ2)

CM.FC29PB



NEW! SLS PREPARED TOOLS

- Delivered with safety ring, certificate, serial number etc.
- SKU is always the standard SKU followed by SLS - Standard SKU 467S.13 in SLS version is 467S.13SLS

SXL SERIES - EXTENDABLE RATCHETS

- SXL.161: 1/2" Extendable compact ratchet
- SXL.171: 1/2" Extendable compact ratchet with flex head, FOD compliant safety lock
- SXL.180: 1/2" Hinged handle
- Absolutely the strongest and most durable ratchet on the market
- **Surpasses all ISO standards by up to 4 times the number of repetitions at double the force (Nm)**
- Intuitive system prevents change of length during use
- Especially suited for dusty environments and industrial applications
- Recessed lever for change of direction to avoid reversal
- Protected and strong mechanism – 72 teeth / 5° angle
- Extremely robust construction and hinge
- Ergonomic anti-slip PVC handle
- Sealed with double o-rings
- Low overall working height
- Easy use with gloves
- Hole for hook



YouTube



SXL.161 / SXL.171 / SXL.180



NEW! 113AS – SHORT ADJUSTABLE WRENCH

- Countersunk adjustment screw with left hand rotation
- Wide opening and thin material for better access
- 113AS.6C: 6" / 113AS.8C: 8"
- Graduated scale in mm
- Ergonomic grip



113AS.6C / 113AS.8C

64C.J2 - QUATTRO WRENCH SET

- Set of 2 wrenches - 8-19mm
- 5° working angle
- Reversible by inbuilt lever



64C.J2

467F.JP10

HINGED GEAR WRENCH SET

- Set of 10 pcs.
- Including sizes: 8-19mm
- Ring head hinges 180°
- 5° working angle
- Simple and quick ID of the tools
- Practical sleeve
- Ergonomic grip



467F.JP10

D.169 – ADAPTORS

- Exceptionally compact – virtually no increase in working height
- **Magnetic - keeps the adaptors together**
- Rifled edge for easy use
- 1/4" to 3/8" - 3/8" to 1/2" - 1/2" to 3/4"



D.169

SXL.DBOX1 - 1/2" SOCKET SET WITH EXTENDABLE COMPACT RATCHET SXL.161

- Contents: Extendable compact ratchet SXL.161, 2 extensions, flexible joint
- Sockets (6 point): 8,10-19,21-22,24,27,30,32mm
- Easy to transport in the extension which doubles as a handle
- Fits snugly in the Facom tool cabinet drawers
- Simple and fast identification of each part
- FOD compatible (Foreign Object Debris)
- Anti-slip material on the box
- Sturdy hinges and latches



SXL.DBOX1

R.PE - ULTRA COMPACT BIT RATCHET

R.PEJ31 - ULTRA COMPACT BIT RATCHET SET

- Set contains 26 bits, ratchet, extender and socket adaptor
- **552% lower compared to a std. ratchet with adaptor and bit**
- Locking system holds tools securely in place in the box even upside down!
- Box is very robust and resistant to most common chemicals
- 60 teeth - 6° interval per "click"
- Ergonomic handle
- Fits in any pocket!



R.PE / R.PEJ31

KL.500

KL.500 - 3/4" SOCKET SET WITH KL.161 RATCHET

- Ratchet with 120 teeth - 3° working angle
- Ratchet length: 505mm
- Sockets (Hex): 19,21-22,24,27,30,32,34,36,41,46,50,55mm
- 2 extensions, flexible joint, T-handle
- Plastic case - fits the JET drawers
- 4 strong metal latches



KL.500

RS.360

1/4" AND 1/2" SOCKET SET

- **1/4": R.360 rotating ratchet with 60 teeth - 6° interval per "click"**
- Extender, T-handle, flexible joint. Sockets 5-13mm in OGV profile
- **1/2": SL.161 ratchet with 72 teeth - 5° interval per "click"**
- Extender, flexible joint. Sockets 10-14,16-17,19,21,24,27mm in OGV profile
- Ergonomic handles
- Plastic case



RS.360

181A - Multigrip pliers

- A: Standard multigrip plier
- EF: Multigrip plier with long jaws/head
- CPE: Bi-component handle and chrome plated metal surface
- 18 / 25 / 30: Length in cm
- Self-gripping jaws
- Heat treated for more strength and durability
- Weight decreased by 9% compared to 181 range
- Improved balance between head and handle
- Closing position of the handle/head optimized for better transfer of the power - hand to handle ratio
- 12 positions - New design of the hinge – quick and precise

181A.18CPE / 181A.25CPE / 181EF.25CPE



CPE.5PB

SET WITH 3 PCS. CPE PLIERS

- 1181A.25CPE multigrip pliers
- 185.20CPE long half round nose pliers
- 192.16CPE diagonal cutter

CPE.5PB



NEW! 500A SERIES - AUTOMATIC WELDING PLIERS

- 500A: Multi position short jaws, 90mm opening
- 501A: Multi position long jaws, 120mm opening
- 501AMP: Multi position single position, 60mm opening
- 505A: Multi position large capacity, 140mm opening
- 506A: Multi position hinged
- Enhanced opening with only one finger needed
- FME (Foreign Material Exclusion) compliant
- SLS (Stanley Lock System) prepared
- **Patented self-adjusting jaw system**
- Very fast and simple adjustment
- Perforated grip for secure use
- Parallel jaws
- 5 positions



500A / 501A / 501AMP / 505A / 506A



205C - PROFIBER GRAPHITE HAMMERS

MAXIMUM SAFETY

- Head will not part with handle: Permanent connection between head and handle - Epoxy
- Impact resistant

OPTIMIZED GRIP

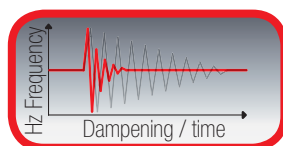
- Elastomers: Soft material, for better grip
- Wide edge prevents slippage of hammer

ABSOLUTE COMFORT

- Intelligent design reduces "strike back" significantly

RANGE

- 200g - 300g - 500g - 800g - 1000g



Graph shows the dampening of the vibration caused by strike back. 205C hammer compared with a normal wood handle hammer

205C.20 / 205C.30 / 205C.50 / 205C.80 / 205C.100



249.GPB - DRIFT PUNCH SET 5 PCS.

263GPB - CHISEL SET 4 PCS

- Made from very high quality metal
- Handle significantly reduces "strike back" on the hand
- Optimized grip with soft material
- 249.GPB: Ø 3,4,5,6,8mm
- 263GPB: Flat chisel: 19, 20 & 22mm Cape chisel: 18mm

249.GPB / 263GPB



257.G - AUTOMATIC CENTRE PUNCH

- No hammer needed
- Press the end to release spring impact
- Adjustable impact: 15-25kg
- Hardened tip

257.G



603F - NEDSTRYGER

668A.8/10/12 - HACKSAW BLADES (10 PCS.)

- Ergonomic and stable handle which reduces cutting efforts
- Fast blade adjustment & blade tension
- Cutting capacity: 100mm ideal to cut all material
- Improved blade tension: 110daN
- Rotation of the blade = 360°
- 8/10/12 teeth/cm - length 300mm
- More homogeneous performance during the life span
- For use in all materials
- Very flexible and durable
- Fremstillet af special stål
- Absorbs less heat

603F / 668A.8 / 668A.10 / 668A.12



212A.35/40/50/60

HAMMERS WITH INTERCHANGEABLE TIPS

- Range: 698g (35mm) - 839g (40mm) - 1143g (50mm) - 1664g (60mm)
- Easily replaceable nylon tips – Shore D74
- Glasfiber handle and steel body
- Handle in ripped PVC

212A.35 / 212A.40 / 212A.50 / 212A.60

216.50 - DEAD BLOW HAMMER

- Ergonomic grip to ensure safe handling
- Hammerhead with small steel pellets
- Surface hardness Shore D63
- Surface area Ø 50mm
- Weight: 950 grammes

216.50



NEW! ACL.2Axx

3 in 1 blade ratcheting screwdriver

- ACL.2A2: 3 in 1 blade holder with 28 pcs. bit set
- ACL.2A5: 3 in 1 blade holder with 5 blades in pouch
- ACL.2A15: 3 in 1 blade holder with 14 blades in Facom box
- ProTwist handle
- T-handle function for extra torque transfer
- Extra storage in the cap for 6 bits
- Cap works as a stubble screwdriver/bit holder
- Mechanism: 45 tooth - 8° angle
- 3 functions: Right / left / locked

ACL.2A2 / ACL.2A5 / ACL.2A15



AN.J5PB - 5 PCS. PROTWIST® SCREWDRIVERS

- Very short round blades with flat and Phillips®
- 4x25 - 5,5x35 - 6,5x35mm
- 1x125 - 2x35mm



AN.J5PB



AWCK.J5PB - 5 PCS. PROTWIST SHOCK SCREWDRIVERS FLAT & PHILIPS®

- Significantly reduces hammer rebound and vibration
- Intelligent and smart design ensures maximum transfer of power/impact
- Free seized fasteners easily by applying light shocks
- Use full as a chisel and drift punch
- Ergonomic grip for secure handling
- Hardened 73Moly steel
- Resistant to solvents
- 4x100 - 6,5x150 - 8x175mm
- PH.1 - PH.2



AWCK.J5

HEX AND TORX KEY SETS

- Hex and Torx key sets in smart sleeve which allows access to all keys without moving adjacent keys

- 82H.JP8AU - Hex key set, 8 pcs., short, inches: 3/32-1/8-5/32-3/16-7/32-1/4-5/16-3/8"
- 82H.JP9A - Hex key set, 9 pcs., short: 1,5-2-2,5-3-4-5-6-8-10mm
- 83H.JP9A - Hex key set, 9 pcs., standard: 1,5-2-2,5-3-4-5-6-8-10mm
- 83S.JP9AL - Hex key set, 9 pcs., long with ball end: 1,5-2-2,5-3-4-5-6-8-10mm
- **83SH.JP13U - Hex key set, 13 pcs., long with ball end, inch: 0,5mm-1/16-5/64-3/32-7/64-1/8-9/64-5/32-3/16-7/32-1/4-5/16-3/8"**
- 83SH.JP8AU - key set, 8 pcs., standard with ball end, inches: 3/32-1/8-5/32-3/16-7/32-1/4-5/16-3/8"
- 83SH.JP9A - Hex key set, 9 pcs., standard with ball end: 1,5-2-2,5-3-4-5-6-8-10mm
- 89.JP8A - Torx key set, 8 pcs., standard: T10-T15-T20-T25-T27-T30-T40-T45
- 89.JP8AL - Torx key set, 8 pcs., long: T10-T15-T20-T25-T27-T30-T40-T45
- 89S.JP8A - Torx key set, 8 pcs., long with ball end: T10-T15-T20-T25-T27-T30-T40-T45



82H.JP8AU / 82H.JP9A / 83H.JP9A / 83S.JP9AL / 83SH.JP13U / 83SH.JP8AU / 83SH.JP9A / 89.JP8A / 89.JP8AL / 89S.JP8A

NEW! DX.RDJ12 – ROUND FILES SET, FEMALE

NEW! DX.145TCJ3 – TWEEZERS SET, MALE/FEMALE

- Ensure good connections – less need for diagnostics
- **Tweezers set, male/female terminals**
- Remove corrosion and extend harness life
- Less use of contact cleaner solvents
- Durable diamond abrasive coating

DX.RDJ12 / DX.145TCJ3



NEW! 829 / 834

INSPECTION MIRRORS

- 829AR: Flexible articulated 55mm round
- 834A.R: Flexible articulated 70x45
- 834B.RTI: Telescopic illuminated 55mm round
- 834B.RTIM: Telescopic illuminated & magnifying 55mm round
- 834B.RTIR: Telescopic illuminated 70x45mm
- 834B.RTIS: Telescopic illuminated 30mm round



829AR / 834A.R / 834B.RTI / 834B.RTIM / 834B.RTIR / 834B.RTIS

NEW! AD.J5TVEPB / AP.J5TVEPB

PROTWIST® VDE SLIM SCREWDRIVERS

- **EExtra slim round blades for optimum electrical installation clearance**
- 1000v isolated and tested
- Chemical resistant surface
- Colour coded = identification
- AP.J5TVE: Set with flat & Phillips®
3,5x100-4x100-5,5x125
PH1x100-2x125mm
- AD.J5TVE: Set with flat & Pozidriv®
3,5x100-4x100-5,5x125
PZ1x100-2x125mm

AD.J5TVEPB / AP.J5TVEPB



827.1 – LONG FLEXIBLE MAGNET

827.2 – FLEXIBLE MAGNET WITH BALL JOINT

- 827.1: Ø 7mm - Length 530mm
- 827.2: Ø 8mm - Length 210mm

827.1 / 827.2



405.10MT / 405.12MT - ELECTRONIC CUTTING PLIERS

- 405.10MT: Copper: 0,3-1,4mm, Piano wire: Max 0,5mm
- 405.12MT: Copper: 0,4-2,0mm, Piano wire: Max 0,8mm

405.10MT / 405.12MT



MT.J1 - MICROTECH TOOL SET, 16 PCS.

- Ergonomic design ensures perfect grip
- Color coded tops for easy and quick identification
- Slotted head: AE.1,2x35 / 1,2x35 / 1,5x35 / 1,8x35
- Slotted head: AEF. 2,x35 / 2,5x35
- Phillips head: AEFP.000x35 / 00x35 / 0x35
- Pincers: 140.AA
- Diagonal cutting plier: 405.10T
- Pliers: 432.LMT

MT.J1



1075.G - 75W GAS SOLDERING IRON

- Estimated time of use at max effect 45min
- Uses butane gas – not included
- Various soldering tips included
- Simple and reliable piezo ignition
- Heating time 40 seconds

1075.G



AEF.J1 - MICROTECH SCREWDRIVER SET, 5 PCS.

- Ergonomic design ensures perfect grip
- Color coded tops for easy and quick identification
- Slotted: AEF.1,5x35 - 1,8x35 - 2,x35 / 2,5x35
- Phillips: AEFP.00x35

AEF.J1



793940 - CABLE STRIPPER "SWINGO" 90°

- **90° angled ergonomic grip**
- Made from fibre reinforced nylon
- Suitable for wires: 0,02-10mm
- Adjustable stripping length
- Easy and quick in use
- Built in cable cutter

793940



NEW! VP.FLEX- :

LOW STYLE SNEAKER 39-45

- Composite toe-cap to EN20345 (200 Joules)
- HRO - Heat Resistance outer Sole 300°
- Non-metallic anti-penetration midsole
- Rubber toe guard for extra durability
- Extreme comfort and light weight
- Lightweight full rubber outsole
- SRA - Slip Resistance A
- Breathable mesh lining

VP.FLEX-



NEW! VP.HITREK- :

HIGH STYLE BOOT 39-45

- Composite toe cap to EN20345 (200joules)
- Non-metallic anti-penetration sole
- Lightweight EVA / Rubber Outsole
- Fabric of Mesh & Microfibre
- SRC - Slip Resistance C
- Water resistant upper
- Shock absorbent heel
- Oil resistant sole
- Metal free

VP.HITREK-



NEW! VP.CITY- :

LOW STYLE SNEAKER 39-45

- Composite toe cap to EN ISO 20345 (200 Joules)
- S1-P - S1 + Penetration Resistance
- SRC - Slip Resistance level C
- Non-metallic anti-penetration midsole
- Dual density PU/PU oil resistant sole
- Breathable fabric lining
- Removable EVA foot bed
- Lightly padded
- Antistatic

VP.CITY-



NEW! VP.ZSWEAT- :

SWEAT SHIRT WITH ZIPPER

S/M/L/XL/2XL

- Sweatshirt in soft material
- Zipper in collar

VP.ZSWEAT-



NEW! VP.COMB2- :

PROTECTIVE OVERALLS

S/M/L/XL/2XL

- Very durable protective overalls
- Made for optimal fit under high stress and no irritating stitching
- Multiple pockets for tools and mobile phone etc.

VP.COMB2-



NEW! VP.BODYW- :

BODYWARMER

S/M/L/XL/2XL

- Made from nylon with thick insulation
- Adjustable waist
- 3 outer pockets – 1 inner

VP.BODYW-



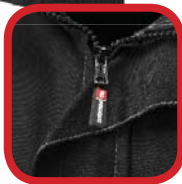
NEW! VP.JACK2- :

BLACK JACKET

S/M/L/XL/2XL

- Tight fit design
- Multiple pockets
- Adjustable waist and sleeves

VP.JACK2-



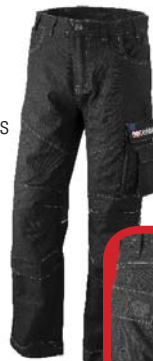
NEW! VP.PANTA2- :

WORKING TROUSERS

S/M/L/XL/2XL/3XL/4XL

- Reflective piping
- Bottom loading knee pad pockets
- Double layer fabric in exposed places
- Hammer loop and ruler pocket
- Holster pockets (can be tucked into front hip pockets)

VP.PANTA2-



VP.PANTA-PADS

KNEE PADS

- Knee pads for VP.PANTA og VP.PANTA2
- Flexible in both lenght and width axis
- Shapes perfectly to the knee

VP.PANTA-PADS



NEW! VP.TS1- : T-SHIRT EVO S/M/L/XL/2XL

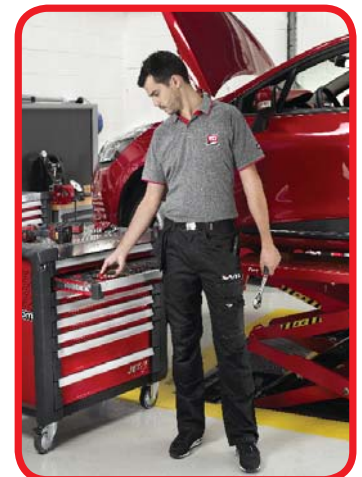
NEW! VP.TS2- : T-SHIRT ICARS S/M/L/XL/2XL

NEW! VP.TS3- : T-SHIRT SPECIAL AUTO S/M/L/XL/2XL

NEW! VP.TS5- : T-SHIRT OLD WRENCHES S/M/L/XL/2XL

- T-shirts in retro and modern fresh designs

ALLE T-SHIRTS



JET+ EXCLUSIVE FACOM TOOL CABINET

UNIQUE AND INNOVATIVE DESIGN

- JET.XMX / JET.XGMX: Tool cabinet in 3 different widths and free choice of number of drawers
- JET.CMXX / JET.CGMX: Chest for tool cabinet in 3 widths, 4 drawers
- Gray (GM) or red (M) epoxy powder coat (other colors available per request - min. 6 pcs.)
- Load up to 900-1100kg depending on model

ACCESSORIES

- All the surfaces: worktop, sides and back of the roll cab can receive accessories
- Large selection of accessories
- Perforated surfaces to accept tool hooks
- Possible to fit wooden work top
- Vice can be fitted
- Quick access storage locations for 16 screwdrivers
- Soft bumpers on the corners and drawers to minimize possible damage to cars etc
- 2 retractable ledges: Under an heavy load, the ledges "disappear" in the worktop

DRAWERS

- Drawer height: 60mm / 130mm / 200mm / 270mm
- Aluminium drawer locking mechanism
- Compatible with Facom module system
- All modules fit in the JET+ cabinet
- Fold in key to protect it
- Fully opening drawers - 100%
- All drawers lock

UNDERCARRIAGE

- Large 125mm wheels for easy manoeuvring
- 4 wheels – 1 with brake

MEASURES

- Measures JET3 (3 modules): L 774 x D 546 x H 971mm
- Measures JET4 (4 modules): L 964 x D 546 x H 971mm
- Measures JET5 (5 modules): L 1154 x D 546 x H 1000mm



JET.6M3 / JET.6GM3



JET.6M4 / JET.6GM4



JET.6M5 / JET.6GM5



JET.C4M3 / JET.C4GM3



JET.C4M4 / JET.C4GM4



JET.C4M5 / JET.C4GM5



MODULBREDDE = 3



MODULBREDDE = 4



MODULBREDDE = 5

NEW! MODM.603F HACKSAW MODULE

- Hacksaw 603F
- 5 various files/rasps
- Tape and steel ruler
- 3 module width



MODM.603F



NEW! MODM.55A-1 ANGLED RING WRENCHES

- 6x7-8x9-10x11-12x13-14x15-16x17-18x19

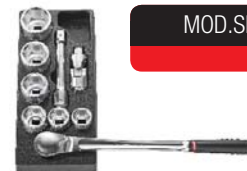
MODM.55A-1



NEW! MOD.KL2 3/4" SOCKET SET

- Sockets: K.34/36/41/46/50/55mm
- K.210B extender
- K.240A flex joint
- KL.161 ratchet

MOD.KL2



NEW! MOD.SHPA 1/2" LONG BIT SOCKETS

- XZN: SV.6LB-8LB-10LB-12LB-14LB-16LB-18LB
- Hex: SHP.5ELA-6LA-7LA-8LA
- Torx: SX.40LA-45LA-55LA-70LA

MOD.SHPA



CM.115BNL 9 MODULES – 115 TOOLS

CM.150BNL 12 MODULES – 150 TOOLS

CM.175BNL 15 MODULES – 175 TOOLS

- MOD.SL1: 1/2" socket set with SL.161 ratchet, 10-19/21-24/27/30/32mm
- MOD.JL2: 3/8" socket set 8-19/21/22mm
- MOD.RL1: 1/4" socket set 5,5-14mm, bits and hex keys
- MOD.440-1: 16 combination wrenches 6-19/21/24mm
- MOD.440-2: 4 combination wrenches 27-29-30-32mm
- MOD.467J12: Ratchet combination wrenches 8-19mm
- MOD.A1: 8 Protwist® screwdrivers, 6 slotted, 2 Phillips®
- MOD.A2: 8 Protwist® screwdrivers, 2 slotted, 2 Phillips®, 4 Pozidrive
- MOD.ANXR: 7 safety torx screwdrivers
- MOD.CPE: Long pliers 185.20CPE, Universal pliers 187.18CPE, cutter 192.16CPE
- MOD.PR12: Multigrip pliers 181.25CPE, automatic welders pliers 580.10
- MOD.PCSN: 4 circlips pliers, straight
- MOD.MI7: 205C.50 Profiber hammer, 208A.32CB Hammer 345g, 248.4-5-6 drift punches, 263.18 chisel, 256.6 centre punch
- MOD.84TZS: 7 T-handle ball head allen keys 3-10mm
- MOD.HLA: Long hex sockets - 3/8" 7-11mm, 1/2" 12-19mm



CM.115BNL

CM.150BNL

CM.175BNL

NEW! 777A.230F / 777A.24F – 11W FLUO LAMP / CABLE REEL

NEW! 777B.230F / 777B.24F – 11W FLUO LAMP

- 230V or 24V versions
- 400 Lux at 50cm distance
- Long life 11W light source
- Wide angle beam for balanced light output
- Integrated hanging hooks/magnets for hands free operation
- One touch on/off button
- Low surface temperature
- Soft touch handle
- 14,5m cord of the highest quality with exceptional resistance to solvents, folding and traction
- Heavy duty robust wall mounting bracket
- In built hook-loop to hang the lamp when not in use
- Cable latches at 0,5m intervals - Adjustable cable stop

777A.230F / 777A.24F

777B.230F / 777B.24F



NEW! BS.LMBC – PLUMBER STYLE TOOL BAG

- Length 50 cm – adapted for long and heavy tools such as hammers, levels and stilsons
- Extra carrying handle when the bag is open
- Excellent accessibility – 100% opening
- Water resistant PVC surface
- Wide shoulder strap
- Document pouch
- Attachment ring
- Holder for pen light
- Durable plastic feet

BS.LMBC



NEW! DB1.RFID – RFID DETECTION TOOL BAG

- Real time monitoring and tracking - No loss of tools
- Perfect for segments like Aerospace, Energy, Oil & Gas, Power plants, Transportation, Food industry
- In case of needed after sales service a complimentary bag will be lend to the end user
- RFID – Radio Frequency Identification
- Supreme FOD control & tool tracking
- No human intervention needed
- Plug n'Play – easy in daily use
- 3 years warranty



DB1.RFID

NEW! BV.FCx SERIES - FLIGHTCASES

- BV.FC1 - 546X347X247 / BV.FC2 - 627X475X275
- BV.FC3 - 670X510X372 / BV.FC4 - 585X457X381 – 4 drawers
- Shockproof / Dustproof / Waterproof / Corrosion proof
- Resistant to harsh temperatures (-33 to +90°C)
- Very strong case designed to last – reinforced corners
- Use with Facom foam on demand platform to customize foam
- Personalize with ID removable label
- Easy opening & waterproof/dustproof mechanism
- Corrosion proof internal metal pins
- Manual pressure release valve
- Self oiling free running wheels
- Adjustable telescopic handle
- Multiple stacking locations
- Soft grip rubber handles
- Accepts pad lock
- Made in Europe

BV.FC1 / BV.FC2 / BV.FC3 / BV.FC4



NEW! 779.PBT – PENCIL BATTERY TORCH

NEW! 779.CBT – COMPACT BATTERY TORCH

NEW! 779.CRT – COMPACT RECHARGEABLE TORCH

NEW! 779.UVT – COMPACT UV TORCH

- 779.PBT – Pencil battery torch - 110 Lumen - 3,5 hours use, 2 AAA batteries
- 779.CBT – Compact battery torch - 225 Lumen – 8 hours use, 4 AAA batteries - 180m range
- 779.CRT – Compact rechargeable torch - 225 Lumen - 7 hours use (Li-Ion), charge time 4 hours
- 779.UVT – Compact UV torch - High performance UV A light, 395-410nm, 20 hours use
- High strength, light weight body for high durability
- IP65 - water and dust proof (779.UVT - IP67)
- Tethering point for Facom SLS - Safety Lock System
- 5 year warranty (779.CRT - 1 year battery/charger)
- One-hand focus adjustment and 5 light modes (779.CBT/779.CRT)
- Concealed USB charge point – 12V car adaptor and 220V charger (779.CRT)
- Perfect for detecting Facom Fluo & RFID tools (779.UVT)



779.PBT / 779. CBT / 779.CRT / 779.UVT

NEW! BT.HT

MOBILE AND MODULAR STORAGE SYSTEM

- BT.200 - Bi-material tool box for BT.HT system
- BT.203 – Bi-material 3 drawer tool box for BT.HT system
- BT.200STRAP – Carrying strap for BT.20x
- BT.HT1- Carriage cart for BT.HT system
- BT.HT1BASKET – Steel wire basket for BT.HT system
- BT.HT1SUP – Fitting system for BT.HT system
- Mobile system - light & easy to move
- Modular – configure the system to fit the job
- Carry heavy loads
- Strong and durable cases - use the box as a step ladder
- Versatile carriage cart
- 5 Years warranty

BT.200 / BT.203 / BT.200STRAP / BT.HT1 / BT.HT1BASKET / BT.HT1SUP



1224.100E/125E/150E/175E – BENCH VICE

1224.100/125/150/175 - BENCH VICE WITH 360° SWIVEL

- 2 locking handles for swivel base
- 2 side adjustment screws
- Pipe jaws and flat jaws
- Jaws always stay parallel whatever the tightening torque
- Replaceable jaws available
- Maximum opening 100/125/150/175mm



1224.100E / 1224.125E / 1224.150E / 1224.175E

1224.100 / 1224.125 / 1224.150 / 1224.175

U.14A / U.14L – SELF GRIPPING

2 SLIM LEG PULLERS

- Slim legs for easy access
- Self gripping and return spring
- Pulling power 500kg
- Capacity:
- U.14A: 10-35mm
- U.14L: 10-45mm



U.14A / U.14L

WB.DRAWER – DRAWER TO FIT WB SERIES WORKBENCHES

- Easy and simple fitting
- Strong construction
- 2 years guarantee

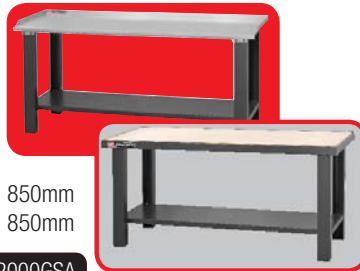


WB.DRAWER

WB.1500WA / WB.1500GSA – 1,5M WORKBENCHES

WB.2000WA / WB.2000GSA – 2M WORKBENCHES

- Prepared for fitment of 2 drawer units (WB.DRAWER)
- Wooden (W) or galvanized worktop (GS)
- Welded and bolted steel structure
- 3 reinforcement cross beams
- Load resistance 700kg (W) / 1000kg (GS)
- Bolts to the floor
- 5 years guarantee! - Very high quality
- Resistant and strong epoxy paint
- Measures WB.1500: L 1500/2000 x D 750 x H 850mm
- Measures WB.2000: L 2000/2000 x D 750 x H 850mm



WB.1500WA / WB.1500GSA / WB.2000WA / WB.2000GSA

1500.AB1M3 / 2000.AB1M3

HEAVY DUTY WORKBENCHES WITH WOODEN WORKTOP AND 6 DRAWER MODULE

- Extremely sturdy hardwood worktop
- 6 drawer module with room for 3 modules in width
- Welded and bolted structure
- Shelf between legs and drawers
- Resistant and strong epoxy surface
- Measures 1500.AB1M3: L 1500 x D 750 x H 850mm
- Measures 2000.AB1M3: L 2000 x D 750 x H 850mm



1500.AB1M3 / 2000.AB1M3

885 - STUD PULLER SET

- Fast and simple extraction of snapped bolts and studs
- Including drills, fluted rods with hex attachment
- **Right or left hand pitch use**
- Range: Ø 6-14mm



885



1 Choose the correct size drill and extractor in relation to the broken bolt



2 Insert the rifled extractor in the hole and extract the bolt – straight pull



3 Remove the extracted bolt by gripping the bolt and turn the opposite direction – Insert Helicoil to strengthen the thread

NEW! TRK5-12PB

THREAD REPAIR KIT 5-12MM

- Kit consisting of threads M5X0,8 / M6X1 / M8X1,25 / M10X1,5 / M12X1,75
- Steel inserts, drill, taps, mounting tools and magnetic end breaker
- Repairs damaged threads - easy to use solution
- Strengthens threads for extreme conditions
- Stronger threads than standard
- Repair rather than replace



TRK5-12PB



287B.JS5

ROLLER TYPE STUD DRIVER SET

- Fast and efficient tightening and loosening of studs
- Eliminates the need for contra tightening of two nuts to extract bolt
- Use with 1/2" ratchet or 22mm wrench
- Range: M6, M7, M8, M9, M10

287B.JS5



286A

UNIVERSAL ROLLER TYPE STUD DRIVER SET

- **Eliminates the need for contra tightening of two nuts to extract bolt**
- Fast and efficient tightening and loosening of studs
- Tightens and loosens studs
- 3 holes for varying stud diameter
- Use with 1/2" ratchet
- Capacity: 5 - 20mm

286A



285.J10PB

STUD PULLER SET

- Strong tapered drill bits to increase the traction surface
- Supplied in stackable sturdy plastic case
- Tap wrench to use with the pullers
- Capacity: 3 - 18mm

285.J10PB



**PURE
POWER**

NEW! NM.30xxxx - PREMIUM LARGE IMPACT WRENCHES

- NM.3000F - 2900Nm Premium Impact Wrench 1"
- NM.3000LF - 2900Nm Premium Impact Wrench 1", long anvil
- NM.3030F - 2900Nm Premium Impact Wrench 1", straight
- NM.3030LF - 2900Nm Premium Impact Wrench 1", straight, long anvil
- Perfect use for industrial maintenance and heavy automotive segment
- **VERY POWERFULL – BRAKE AWAY TORQUE (nut busting) 2900Nm**
- Power management – progressive feather trigger speed control
- Titanium housing – very light weight and maximum durability
- Twin hammer mechanism (more power – less vibration)
- New type of motor – less parts = more reliability
- Titanium exhaust muffler – low noise level
- Innovative impact system – more power
- 2 inbuilt eyelets for sling system
- Soft rubber dampers
- One hand power adjustment
- One hand reverse system
- 360° rotating air inlet
- Recommended internal hose diameter: 1/2"
- Air pressure: 6,2 bar
- Soft grip
- Weight 7,4/8,1kg

1" - 2900Nm - 7,4kg

NM.3000F / NM.3000LF

1" - 2900Nm - 8,1kg

NM.3030F / NM.3030LF



NM.3030F - Standard anvil



NM.3000F - Standard anvil



NEW! V.DG – GRINDERS

- V.DG300F: Grinder, straight, 6mm chuck, 0,3HK
- V.DGE300F: Grinder, straight, long, 6mm chuck, 0,3HK
- V.DGA305F: Grinder, angled 90°, 6mm chuck, 0,3HK
- V.DGA310F: Grinder, angled 120°, 6mm chuck, 0,3HK
- V.DG500F: Grinder, straight, 6mm chuck, 0,5HK
- V.DG515F: Grinder, straight, long, 6mm chuck, 0,5HK
- V.DGA505F: Grinder, angled 90°, 6mm chuck, 0,5HK
- Rubber coated housing for increased comfort and grip
- Low sound level with optional added silencing
- Exhaust directed away from the user
- Facom SLS – Safety Lock System compatible
- Adjustable speed
- 6mm chuck

V.DG300F / V.DGE300F / V.DGA305F / V.DGA310F

V.DG500F / V.DG515F / V.DGA505F



**STRONG
COMPACT**

NEW! W.PUNCHES PUNCHES FOR PRESS

- Centers the pressing force
- Perfect for bearings etc.

W.PUNCHES



NEW! W.PROTECT - SEE THROUGH PROTECTION SCREEN FOR PRESS

- Protects the user in case of material failure
- Easy to attach to the press

W.PROTECT



NEW! HYDRAULIC PRESSES

AVAILABLE PRIMO APRIL!

- W.410WB – 10T – HxB 720x470mm – 38kg
- W.415WB – 15T – HxB 800x550mm – 48kg
- W.430BO – 30T – HxB 1850x670mm – 104kg
- W.430ML – 30T – HxB 1900x890mm – 112kg
- W.450MA – 50T – HxB 1850x670mm – 145kg
- W.450PN – 50T – HxB 1900x890mm – 191kg
- Hydro pneumatic foot control and manual 2-speed hydraulic jack (W.450MA)
- Certified by the norm EN 1494 and by the machine directive 2006/42/CE
- Long handle allows the operator to stand far away from the working area
- Tested by VERITAS – Can supply EC compliant document
- Simple adjustment - Lateral moving jack and supports
- Very strong one piece machined structure
- Side storage for pushers (not included)
- Easy access to hydraulic mechanism
- Eye level pressure gauge in tonnage
- Wide legs for stability and rigidity
- Increased stability and resistance - Floor anchoring possible



W.410WB / W.415WB / W.430BO / W.430ML / W.450MA / W.450PN



E.506-340S – TORQUE- AND ANGLE ADAPTOR 1/2"

- Measures the tightening of a bolt/nut in torque / degrees
- Perfect for angle tightening of cylinderhead bolts
- Attached between the socket and suitable tool like a ratchet
- E.506-340S: 17-340Nm / 1-360°
- **Accuracy: +/- 3% torque / +/- 2% angle**
- Preset torque / angle indicated by LED's and buzzer
- A row of LED's light up in sequence beginning at 80% of the preset angle increasing to 100%
- Units: Nm, inlb, flb, kgcm, degrees
- Torque: Peak or Track
- Very easy and simple to use
- Comes in a sturdy plastic case

E.506-340S



MC.130B / MC.270B / NP.100B / NP.200B / NP.300B / NP.600B

TORQUE MULTIPLIERS

- MC.130B: Input 1/2" / Output 3/4", weight 3,8kg, max torque 1300Nm
- MC.270B: Input 3/4" / Output 1", weight 3,8kg, max torque 2700Nm
- NP.100B: Input 1/2" / Output 3/4", weight 3kg, max torque 1000Nm
- NP.100B: Input 1/2" / Output 1", weight 3kg, max torque 2000Nm
- NP.100B: Input 1/2" / Output 1", weight 7kg, max torque 3000Nm
- NP.100B: Input 1/2" / Output 1 1/2", weight 10,6kg, max torque 6000Nm
- Multiplier ratio: 0,2 (MC serie) / Multiplier ratio: 0,04 (NP serie)
- Input torque limiter to protect the mechanism (NP serie)
- Non-return system for increased safety (NP serie)
- Planet gear mechanism (NP serie)
- Multiplies torque and ensures an even and gentle application of torque for improved accuracy which protects nuts, bolts, tools and the operator
- Reduced lever arm ratio for greater precision at high torque
- Lifetime lubricated mechanism for ease of maintenance
- Compact and light weight model for awkward spaces
- Easy application of very high torque
- Supplied with straight and offset reaction arm
- Supplied in sturdy tool box
- Precision: +/- 4%

MC.130B / MC.270B / NP.100B / NP.200B / NP.300B / NP.600B



NEW! E.S401J1 / E.S404J1

ELECTRONIC TORQUE SCREWDRIVER SETS

- E.S401: 10-100cNm (20-100cNm guaranteed with calibration)
- E.S404: 40-400cNm (80-400cNm guaranteed with calibration)
- Record, store and track tightening 250 measurements for reporting etc.
- Torque control in both clockwise and anticlockwise directions
- Accuracy: 2% clock wise / 3% counter clock wise
- Unit selection: CNm, in-lb – kg-cm (10cNm = 0,1Nm)
- **Very accurate setting with resolution of 0,1cNm - 9 torque presets available**
- 5 buttons to easily select mode, peak or track and torque setting
- Indicates reached torque setting by 3 LED's and buzzer
- Delivered in plastic box with foam with 6 pcs. 50 mm bits
- Rechargeable AAA battery – Auto off power
- Tethering point for Facom SLS system
- Clear LCD screen not affected by light
- Ergonomic handle in ProTwist design
- 1/4" quick chuck adapter for bits
- USB cable for data transfer
- Re-calibration enabled
- Overload tracker



E.S401J1 / E.S404J1



WEBKATALOG

NYT KATALOG
FACOM FIB

The indispensable encyclopedia with more than 8000 references!

Your distributor:

Scan the QR code



or

www.facom.com

Choose Finland



Choose Find a dealer

FACOM®

N E X T I S N O W

Facom Nordic
Roskildevej 22
Albertslund
DK-2620

Tel: +45 7020 1510
Fax: +45 7022 4910
www.facom.com
facom-nordic@sbdinc.com

Offers end 30.08.2016. Products subject to availability.
Facom reserves the right to modify any product or specification without prior notice.
Phillips, Pozidriv are registered trademarks of Phillips Screw Co. Torx is a registered trademark of Camcar/
Textron. Circlip is a registered marque of Nomel.