

The Princess Bride



Fairy Tales
Parody and Satire

Parody and Satire



Parody

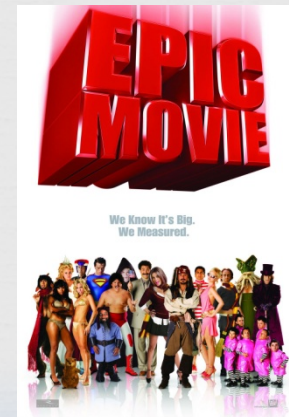


- Parody makes fun of another work by imitating some aspect of it.
- Parody is meant for mocking and does not contain anything serious.
- Parody is pure entertainment and nothing else.
- Parody does not intend to bring about societal change.
- Parody can make fun of literature, film, advertising, popular culture, etc.

You may be familiar with parody...

Film

- Robin Hood: Men in Tights
- Scary Movie 1, 2, 3, and 4
- Not Another Teen Movie
- Dance Flick
- Epic Movie



Satire



- Satire ridicules the shortcomings of people or institutions in an attempt to bring about a change.
- Satire makes a serious point, usually through humor, while attacking some aspect of society.
- Satire often uses irony and exaggeration to make its point.
- Satire can sometimes use parody to make a point (**but not all parodies are satire!**)

And you may be familiar with satire...



Television

- The Simpsons
- The Daily Show
- The Colbert Report



Can you tell the difference?



☞ Weird AI - Parody

☞ What is the point?

☞ Coke Commercial

☞ What is the point?

☞ Clip 3

☞ Clip 4

-



HOW GREEN ENERGY WORKS,



See? You Give Me
Your GREEN AND
I Give You THE
TAXPAYERS'
GREEN!



John
McCOY
BND uclrk

BND uclrk



Parody or Satire?



Parody or Satire?




General Morons

INTERNATIONAL  PAPER

There's plenty of trees left...





Dare to be the same.

Calvin Kline
JEANS

What's the call on *Princess Bride*?



Parody

or

Satire?

Terms



- *Allusion* - a reference to a person, place, poem, book, event, etc., which is not part of the story, that the author expects the reader will recognize.
- *Frame Narrative or Frame Story* - a story that has another story or stories within it.
- *Intrusive Narrator (authorial intrusion)*- an omniscient narrator, who frequently interrupts the plot with comments on the story, characters, or life in general.

More Terms...



☞ *Willing Suspension of Disbelief* - the deliberate putting aside of the audience's or reader's critical beliefs in order to accept the unreal world the author creates. Even in the most realistic novels, this technique must be used.



Bring these terms to life in the novel....



- ∞ In your assigned group, spend some time looking for examples of your assigned term in *The Princess Bride*.
- ∞ Write down the page numbers where you find your evidence so you can share with the class.
- ∞ Decide if the use of the element you are researching adds or detracts from the story. Do you think Goldman should have used the term you're reviewing? Why or why not?



☞ Section end.

What are Fairy Tales?



- Product of oral tradition, dating back before the Middle Ages
- Jacob and Wilhelm Grimm were the first to publish the long oral tradition of folk and fairy tales in Germany in 1812.
- Most fairy tales did not have the same uplifting, happy endings we read and see today.

Cinderella



- ❧ How does Disney end Cinderella?
- ❧ This is how the Grimm brothers did it:
 - ❧ *So as the bridal procession went to the church, the eldest walked on the right side and the younger on the left, and the pigeons picked out an eye of each of them. And as they returned the elder was on the left side and the younger one on the right, and the pigeons picked out the other eye of each of them. And so they were condemned to go blind for the rest of their days because of their wickedness and falsehood.*
- ❧ More [examples](#)

How many fairy tales can you name?

Jot some down right now.

- ❧ Sleeping Beauty
- ❧ Cinderella
- ❧ Rapunzel
- ❧ Jack and the Beanstalk
- ❧ Snow White
- ❧ Beauty and the Beast
- ❧ The Frog Prince
- ❧ Red Riding Hood
- ❧ Hansel and Gretel
- ❧ Rumpelstiltskin
- ❧ Snow Queen
- ❧ Thumbelina
- ❧ The Emperor's New Clothes
- ❧ The Real Princess

Let's talk Disney



☞ TPS

- ☞ Get out a piece of paper and list the essential elements you believe must be present for a story to be a fairy tale.
- ☞ Partner up and compare your lists. Condense your lists into one list with the strongest 7 elements you can agree upon.

Is it a Fairy tale?

The seven elements to look for



- ❧ 1) Fairy tales have a special beginning and/or ending. They usually begin with: *once upon a time*, **or** *there once was*, **or** *there once lived* . The ones that have the special ending say: *and they lived happily ever after*.
- ❧ 2) Fairy tales have at least one good character and that role is usually restricted to the protagonist.
- ❧ 3) Fairy tales have evil characters; if not evil, at least misguided. It is the role of the good character to overcome the obstacles that the villain creates.
- ❧ 4) Royalty and/or castles usually exist in fairy tales, but they are optional. We have many fairy tales that do not have castles such as *The Little Red Riding Hood* .
- ❧ 5) Magic is often prevalent.
- ❧ 6) There is an obstacle which must be overcome.
- ❧ 7) In fairy tales, things often happen in threes or sevens.

There are three major forms of folk narratives:

myths, legends and folk tales.



- ❧ Myths are narratives that use gods and other immortal figures. These narratives are used to explain the function of the universe.
- ❧ Legends are a sort of historical narratives. They use extraordinary characters, experiencing incredible events, in order to explain cultural ideas and norms. They have some element of truth to them.
- ❧ Folktales are even further subdivided, containing fables, tall tales, and fairy tales. They often examine human nature.



- ❧ Animal fables use animals to personify human characteristics.
- ❧ In tall tales, such as the story about Paul Bunyan, there is the presence of something marvelous and “magical” but they are not fairy tales.
- ❧ In fairy tales the characters have to *interact* with something magical.



∞ Watch this fairy tale and make notes on what seems to be “out of character” for normal fairy tale characters.

∞ [Http://www.youtube.com/watch?v=sbGTcpad1pA](http://www.youtube.com/watch?v=sbGTcpad1pA)

∞ What did you notice?

The Princess Bride



Now that you are a fairy tale expert, we will analyze *The Princess Bride* and decide if it is indeed, a fairy tale.

What elements do you notice that make it different from a traditional fairy tale? (Don't forget to look at gender roles!)

(Handout)

Could fairy tales be sending negative messages to young girls, or are they simply stories meant to entertain?



Let's find out....

DEBATE!

What about gender roles in fairy tales?



☞ How to be a princess

☞ What's wrong with Cinderella?