



 **Stitch
Sprouts**
Fall 2017

Established in 2012, **Stitch Sprouts** offers the highest quality yarns to fill your shelves, hundreds of patterns and books by popular designers, and dozens of unique handmade stitch markers.

Yarn

In 2014 **Stitch Sprouts** launched our own yarn brand. **Yellowstone** is the first line to come out of the mill. **Yellowstone** is a hardworking and beautiful yarn, with a blend of wool and a touch of silk for strength and luster. Each skein contains 285 yards of 3-ply luxury. It's the perfect yarn for texture, lace, colorwork, and cables. We offer 13 colors inspired by the beauty of the American wilderness.

Just one year later, we proudly launched our second line, **Crater Lake**. **Crater Lake** is a bulky 100% superwash merino. A 3-ply construction and a soft bouncy twist make this a yarn you will want to use for everything. It's perfect for baby items, adult sweaters, and everything in between. Each skein is 110 yards of super snuggly comfort. **Crater Lake** now comes in 12 beautiful colors.

We are very excited to offer these classy and comfortable yarns to our customers to help create the projects of their dreams, and can't wait to see what they create with it. You'll love having **Yellowstone** or **Crater Lake** on your needles, hooks, and looms. Please be sure to share your finished projects with us via e-mail, Facebook, Twitter, or Ravelry!

Patterns & Books

With **30** of the **BEST** designers in the industry, **Stitch Sprouts** provides you with hundreds of patterns for any weight yarn. Our offerings include accessories, shawls, hats, socks, and sweaters. All our patterns are printed in full color on high quality bound stock. Patterns sell yarn!

Stitch Markers

Stitch Sprouts now offers unique handmade stitch markers.

Coil-less Crystals add bling to your work with the sparkle of real Swarovski crystals. These removable locking markers are perfect for both knitting and crochet.

Paper Pearls are made from recycled **Stitch Sprouts** catalogs. We hand roll and seal each and every unique pearl.

Snag-free stitch markers are seamless with colorful beads in matching colors and won't catch even the finest yarns and threads.

Sprout Gems adorn your knitting with beautiful gemstones. They are made with the thinnest wire loops that won't interrupt your gauge.

How to Order

Placing an order is as easy as sending an e-mail or giving us a call. Remember to list both the item number and description.



stitchsprouts.com
info@stitchsprouts.com
(877) 781-2042



[facebook.com/StitchSprouts](https://www.facebook.com/StitchSprouts)



twitter.com/StitchSprouts



<https://goo.gl/8YHGVI>



[instagram.com/StitchSprouts](https://www.instagram.com/StitchSprouts)

NEW



Sprout Gems

These Stitch Markers are made with the thinnest of wire loops so they don't interrupt your gauge when knitting.

Let us choose your gems.
5 assorted gems per pack.
SM40



Coil-less Crystals

Add bling to your work with the sparkle of real Swarovski crystals. These removable locking markers are perfect for both knitting and crochet.

12 markers per set



SM30 - Multi



SM31 - Pink



SM32 - Purple



SM33 - Blue



SM34 - Green



Paper Pearls Stitch Markers

What does Stitch Sprouts do with leftover catalogs? We turn them into paper pearls!

Each paper bead is hand rolled and sealed using strips of past catalog pages. Each pearl is unique in shape and color.

Bead color may vary depending on supplies. The attached jump ring is 9mm and will fit comfortably up to a US #8 needle.

5 markers per set



SM11 - Flame



SM12 - Citrus



SM13 - Leaves



SM14 - Amethyst



SM15 - Sea Glass



SM16 - Galaxy

Snag-Free Ring Markers

Each stitch marker is carefully constructed to be snag-free. A colorful glass bead is glued directly over the seam in the jump ring keeping even the lightest lace-weight yarn from snagging. Themed sets contain like colored beads.

The jump ring is 9mm and will fit comfortably up to a US #8 needle.

8 markers per set



Why Classes?

Classes attract customers. Offering new and exciting classes that develop your customers' knitting and crocheting skills is a must. But what shop owner has time to create detailed class materials when they're already busy running a store?

Engage your students with new classes and grow your customer base with our newest offering, [Class Kits](#).

What is a Class Kit?

Class Kits are **MORE** than a kit. A class kit contains a pattern, a skein of yarn, **AND** a class handout. You can use these as class materials when you teach a class, or you can sell them as a class-in-a-box for students who want to teach themselves.

Each class is broken into multiple sessions to guide students along while knitting these beautiful patterns. Kits are available in any of our colors of Yellowstone or Crater Lake as indicated below.

These were a huge hit both at Sample-It and on the show floor. Kits have no minimum order, and we are shipping immediately!



Learn to Knit

This class teaches you how to knit from cast-on to bind-off. Students learn the knit and purl stitches, a knitted cast-on, and a simple k2tog/yo buttonhole while making a trendy cowl.

Available in any Crater Lake color.
CK0501



Learn to Crochet

This class teaches you how to crochet. Students learn chain stitches, single, half-double, double, and treble crochet stitches while making a pretty cowl.

Available in any Yellowstone color.
CK0601



My First Shawl

This class is the perfect introduction to lace and shawl knitting. You will learn how to read lace charts, to work a variety of lace stitches, and to finish your project by blocking—all while making a beautiful lace shawl!

Available in any Yellowstone color.
CK0101



Easy Cabled Cowl

This class is a great introduction to cables. You will work a variety of cable stitches both with and without the cable needle, learn to read cable charts, and understand how to fix mistakes—all while making a fashionable cowl!

Available in any Yellowstone color.
CK0201



My Favorite Hat

This class teaches you how to knit in the round in four different ways! With multiple options and knit in a bulky yarn, this is sure to become your favorite hat as well!

Available in any Crater Lake color.
CK0301



SPROUT SCOUTS

Sprouts Scouts is a 10-month long educational community-building program intended to increase your customer engagement by bringing them into your shop again and again. Scouts provides you with the tools you need to create this community, all you need to supply is the yarn.

Scouts comes packaged in seats of five and includes:

- Five exclusive Scout patterns
- Handouts and activities for each pattern
- Achievement Patches
- Extras and goodies
- Promotional materials and graphics to advertise the program



Additionally, every shop gets a Scout Leader Handbook to guide their Sprout troop. Package the program as an in-store social club or as a subscription box kit!



Stranded in Color

This class teaches you how to knit 2-color stranded colorwork. The yarn in the kit is enough to make two hats in opposite colorways!

Available in 4 Crater Lake color combos.
CK0401

Snow/
Wizard Island



Snow/
Mazama



Phantom Ship/
The Old Man



Phantom Ship/
Violet Green Swallow



REBECCA VELASQUEZ is a crochet and knitwear designer in Houston, Texas.

As a child, she was taught to sew by her mom and the love of yarn by her grandma. Drawing on her seamstress background, Rebecca's designs have a propensity to be classic in structure and silhouette.

Her easy way with yarn selection and stitch choices are where her originality shines, appealing to both beginning and advanced crocheters and knitters alike.

She has had many designs published in print and online magazines, with yarn company collections as well as multiple collaboration books. You can find her independently published patterns under the RV Designs label through her website and on Ravelry.

Designers/item numbers are based on the characters indicated in blue behind names below. Use item numbers for quick and easy ordering.
 All patterns are knitting unless otherwise indicated.
 Patterns written specifically for Stitch Sprouts begin with **(SS)**.



Amy Herzog (AH)

View all of Amy's patterns at <http://stitchsprouts.com/AmyHerzog>



BabyCocktails (BC)

View all of BabyCocktails' patterns at <http://stitchsprouts.com/BabyCocktails>



Carol Sunday (CS)

View all of Carol's patterns at <http://stitchsprouts.com/CarolSunday>



Andrea Rangel (AR)

View all of Andrea's patterns at <http://stitchsprouts.com/AndreaRangel>



Barbara Benson (BB)

View all of Barbara's patterns at <http://stitchsprouts.com/BarbaraBenson>



Donna Druchunas (DD)

View all of Donna's patterns at <http://stitchsprouts.com/DonnaDruchunas>



Alex Tinsley (DR)

View all of Alex's patterns at <http://stitchsprouts.com/AlexTinsley>



Becky Herrick (BH)

View all of Becky's patterns at <http://stitchsprouts.com/BeckyHerrick>



Faina Goberstein (FG)

View all of Faina's patterns at <http://stitchsprouts.com/FainaGoberstein>



Angela Tong (AT)

View all of Angela's patterns at <http://stitchsprouts.com/AngelaTong>



Bonnie Sennott (BS)

View all of Bonnie's patterns at <http://stitchsprouts.com/BonnieSennott>



Heather Zoppetti (HZ)

View all of Heather's patterns at <http://stitchsprouts.com/HeatherZoppetti>



Army of Knitters (AK)

View all of Army of Knitters' patterns at <http://stitchsprouts.com/ArmyOfKnitters>



Bristol Ivy (BI)

View all of Bristol's patterns at <http://stitchsprouts.com/BristollIvy>



Jen Lucas (JL)

View all of Jen's patterns at <http://stitchsprouts.com/JenLucas>

Designers/item numbers are based on the characters indicated in blue behind names below. Use item numbers for quick and easy ordering.

All patterns are knitting unless otherwise indicated.

Patterns written specifically for Stitch Sprouts begin with **(SS)**.



Katherine Vaughan (KV)

View all of Katherine's patterns at <http://stitchsprouts.com/KatherineVaughan>



Pixie Purls (PP)

View all of Pixie Purls' patterns at <http://stitchsprouts.com/PixiePurls>



Stephanie Tallent (SC)

View all of Stephanie's patterns at <http://stitchsprouts.com/StephanieTallent>



Kristen TenDyke (KT)

View all of Kristen's patterns at <http://stitchsprouts.com/KristenTenDyke>



Poetry in Yarn (PY)

View all of Poetry in Yarn's patterns at <http://stitchsprouts.com/PoetryInYarn>



Tabetha Hedrick (TH)

View all of Tabetha's patterns at <http://stitchsprouts.com/TabethaHedrick>



Mercedes Tarasovich (MT)

View all of Mercedes' patterns at <http://stitchsprouts.com/MercedesTarasovich>



Rebecca Velasquez (RV)

View all of Rebecca Velasquez's patterns at <http://stitchsprouts.com/RebeccaVelasquez>



Triona Murphy (TM)

View all of Triona's patterns at <http://stitchsprouts.com/TrionaMurphy>



Mindy Wilkes (MW)

View all of Mindy's patterns at <http://stitchsprouts.com/MindyWilkes>



Romi Hill (RH)

View all of Romi Hill's patterns at <http://stitchsprouts.com/RomiHill>



Woolly Wormhead (WW)

View all of Woolly's patterns at <http://stitchsprouts.com/WoollyWormhead>



OwlCat Designs (OC)

View all of OwlCat Designs' patterns at [http://stitchsprouts.com/OwlCat Designs](http://stitchsprouts.com/OwlCat%20Designs)



Sivia Harding (SH)

View all of Sivia's patterns at <http://stitchsprouts.com/SiviaHarding>



Ysolda Teague (YT)

View all of Ysolda's patterns at <http://stitchsprouts.com/YsoldaTeague>



MW27 Guyandotte by Mindy Wilkes



SH54 - Arcuato
435-750 yds. Fingering wt.



HZ65 - Ardente
1,150 yds. Lt. Fingering wt.



DR88 - By the Deep
430 yds. Sport wt.



BS40 - Calliopsis
450-500 yds. Lt. Fingering wt.



AT18 - Clinton Hill
255 yds. Worsted wt.



SC112 - Coast Oak Cowl
306-347 yds. Sport wt.



AT17 - Cobbleway
402 yds. Worsted wt.



OC74 - Cordage & Spar Cowl
220-260 yds. Bulky wt.



OC11 - Cornice Cowl
250-270 yds. Sport wt.



AT16 - Curvilinear
175-350 yds. Worsted wt.



AT20 - Dayap Cowl
800 yds. Fingering wt.



JL40 - Demanutr
850 yds. Fingering wt.



JL41 - Duessa
450 yds. Fingering wt.



HZ66 - Erba
390/180/180 yds. Fingering wt.



OC76 - Fire Circle
660 yds. Fingering wt.



RV03 - Fun & Games
615-630 yds. Lace wt.



AT21 - Furinji
560 yds. Fingering wt.



HZ64 - Gallo
997 yds. Sport wt.



RV02 - Gifting Shawl



MW27 - Guyandotte
260/150/30/60 yds. Sport wt.



AT23 - Hanashōbu
540 yds. Fingering wt.



YT41 - Hikari
260 yds. Chunky wt.



PY62 - Lea in Bloom Scarf/Shawl
340-660 yds. Fingering wt.



YT45 - Mareel
750 yds. Sport wt.



OC75 - Markanda
1,150-1,200 yds. Sport wt.



DR92 - Messier 51
240 yds. Super Bulky & Aran wt.



MW28 - Nestlow Cowl
240 yds. DK wt.



PY59 - Olivia Infinity Scarf
430 yds. Worsted wt.



BB44 - Oscillare
350-400 yds. DK wt.



DR89 - Paraselene
165 yds. DK wt.



BB45 - Ready Player One
640-660 yds. Sport wt.



OC51 - Rinde
130-150 yds. Aran wt.



JL42 - Sendero
450 yds. DK wt.



DR87 - Snugg
180 yds. Super Bulky wt.



CS57 - Soutache
480-1,440 yds. Lt. Sport wt.



YT48 - Stac Shoaigh
600 yds. Sport wt.



JL43 - Streambank
630 yds. DK wt.



RV04 - Thorns
615-630 yds. Heavy Lace wt.



OC68 - Tidepools
700-720 yds. Sport wt.



JL44 - Vauhti
800 yds. Worsted wt.



CS55 - Water Hyacinth
920 yds. Lt. Sport wt.



OC72 - Wild Waves Whist
770 yds. DK wt.



CS56 - Windfeather
65-130/60-120/30-55 yds. Lt. Sport wt.



RV05 - Wycheproof
430 yds. Lt. Fingering wt.

Popular Neckwear

SC65
Cereus
by Stephannie Tallent



OC02 - Amir Al-Bahr
750-775 yds. Sport wt.



HZ59 - Aquamarine
420-450 yds. Fingering wt.



JL28 - Aranthera
400 yds. Fingering wt.



RH03 - Artesian
385-600 yds. Fingering wt.



RH04 - Asterope
400-700 yds. Fingering wt.



BB01 - Atreides
390-450 yds. Fingering wt.



MW22 - Baya
375/325 yds. Lace/Fingering wt.



JL03 - Beddington
350 yds. DK wt.



MW26 - Bellbrook
400 yds. Fingering wt.



SC109 - Beneath the Moon
1,600-1,700 yds. Lace wt.



TH18 - Bluestars
754 yds. Fingering wt.



BC75 - Brandy Alexander
420 yds. Worsted wt.



MW14 - Brunswick
700 yds. Lace wt.



BB43 - Burly Cable Cowl
200 yds. Bulky wt.



BS37 - Camerado
550-1,050 yds. Fingering wt.



JL29 - Carrington
275-500 yds. Fingering wt.



SC107 - Cayucos Shawl
800-980 yds. Lace/DK/Worsted wt.



TH10 - Ceili Shawl
480-500 yds. Fingering wt.



SC100 - Celadonite Cowl
130-487 yds. DK wt.



SC65 - Cereus
1,150 yds. Lace wt.



RH29 - Chilkat



BB40 - Cloud Street Stole
875-1,000 yds. Lt. Fingering wt.



BB41 - Contraction Cowl
400 yds. Fingering wt.



SS15 - Coperta
660 yds. Bulky wt.



SH45 - Crescendo
800 yds. Lace wt.



YT36 - Crokern Tor
820-1,720 yds. Lace wt.



CS51 - Dancing with Bears
690-960 yds. Worsted wt.



JL30 - Deryn
800 yds. Fingering wt.



HZ63 - Diopside
960 yds. Fingering wt.



YT24 - Dovana
385 yds. Fingering wt.



BB39 - Earthbound Misfit
900-1,000 yds. Fingering wt.



BC71 - Edradour
750-800 yds. DK wt.



RH12 - Elektra
450-525 yds. Heavy Lace wt.



TM06 - Europos Scarf
DK or Worsted wt.



TH15 - Fee
408 yds. Fingering wt.



SS03 - Fiammata
285 yds. Sport wt.



CS52 - Fisherman's Cowl
275 yds. Worsted wt.



AR45 - Folded Paper Wrap
1,270 yds. Lace wt.



SS06 - Fulmine
560 yds. Sport wt.



AT11 - Ginto Shawl
770 yds. Fingering wt.



BS33 - Golden Valley
635 yds. Sport wt.



MW02 - Harvest Moon
500-520 yds. Worsted wt.



MT02 - Haven
400-800 yds. Fingering wt.



KV93 - Here&There&Everywhere
395-400 yds. Worsted wt.



MW12 - Holden
430-800 yds. Lace or Fingering wt.



RH28 - Honeysweet



BI06 - Hrim
580 yds. Worsted & Lace wt.



KV47 - Isidore Shawlette
300 yds. Fingering wt.



SH16 - Jo's Pride
700-1,100 yds. Fingering wt.



BH17 - Kathryn Margaret
450-500 yds. Worsted wt.



JL36 - Kebeliai
575 yds. Lt. Fingering wt.



OC34 - Khyber Pass
740-750 yds. Sport wt.



AT02 - Kouyou Shawl
420-550 yds. Worsted or Sport wt.



SH50 - Layer Cake
837 yds. Fingering wt.



TH03 - Legato
400 yds. Fingering wt.



MT03 - Lena
390/195 yds. Fingering wt.



MW21 - Lesage Shawl
500 yds. DK wt.



RH26 - Love Squared
425 yds. Fingering wt.



SS01 - Lucciola
Sport wt.



BB02 - Mapes
400 yds. Worsted wt.



YT02 - Marin
385 yds. Sport wt.



BB23 - McClanahan
125-240 yds. Worsted/Chunky wt.



RH27 - Meeks Bay



SC61 - Mica Cowl
165-265 yds. Worsted wt.



DD42 - Milo in the Doldrums
1,000 yds. Chunky wt.



KV109 - Mirrormere
437 yds. Fingering wt.



SH22 - Norwegian Woods
800 yds. Lt. Fingering wt.



BI31 - Occam
800-1,120 yds. Fingering wt.



OC48 - On the Forest Floor
1,020-1,120 yds. DK wt.



BH33 - Ondulation
850 yds. Lace/Fingering wt.



PY58 - Onodrim Shawl
400 yds. Fingering wt.



AK96 - Opulent Cowl
40 yds. Super Bulky wt.



CS46 - Pachelbel
740-2,210 yds. Sport wt.



PY57 - Panacea Wrap
800 yds. Sport wt.



KV110 - Payden Cowl
175-210 yds. Worsted wt.



SH51 - Peacock Shawl
1,400 yds. Fingering wt.



AR23 - Pembroke
260 yds. Super Bulky wt.



HZ38 - Pera
438 yds. Fingering wt.



SS13 - Pergolato
220 yds. Bulky wt.



MW23 - Pomeroy
500-550 yds. Fingering wt.



CS43 - Potawatomi
1,200-1,250 yds. Worsted wt.



JL33 - Primrose
400 yds. Fingering wt.



HZ62 - Pyrrole
330 yds. Fingering wt.



PY55 - Radio Waves Scarf
430 yds. Fingering wt.



AT14 - Rampion Bellflower Scarf
400 yds. Fingering wt.



RH19 - Red Freckles
400 yds. Fingering wt. ea.



MT04 - Rhoda
300/300 yds. DK wt.



BI32 - Rillmark
575 yds. Sport wt.



BB35 - Ring the Gack
210 yds. Worsted wt.



DR70 - Rip Curl
400 yds. Fingering wt.



MW25 - Rookwood
325 yds. Fingering wt. ea.



RH21 - Sagebrush Infinity Scarf
400 yds. Fingering wt. ea.



SC102 - Sand Ripples Shawl
750 yds. Fingering wt.



OC59 - Schaumkronen
315-330 yds. Fingering wt.



SS08 - Scialle
285 yds. Sport wt.



AR25 - Sentiment
320 yds. Super Bulky wt.



TH04 - September Cowl
650 yds. DK wt.



SH47 - Seussical
345/148 yds. DK wt.



FG21 - Shades of Amber
300 yds. Worsted wt.



TH16 - Shea Scarf
315 yds. Fingering wt.



PY29 - Simple Sugar Scarf
630 yds. Fingering wt.



BS39 - Singing Beach
300 yds. Fingering wt.



CS53 - Slanted Gansey
360-600 yds. Worsted (Dk, Sport) wt.



TH05 - Sonatina
375 yds. Fingering wt.



AK98 - Sooftest Cowl
38 yds. Super Bulky wt.



AK97 - Sooftest Scarf
114 yds. Super Bulky wt.



DD05 - Spring's First Blush
Fingering wt.



AR46 - Squam Confidential
600 yds. Bulky wt.



SS07 - Stregone
220 yds. Bulky wt.



YT33 - Suloinen
240 yds. Chunky wt.



AR31-Sunlight on the Forest Floor
530 yds. Fingering wt.



DD23-Sunshine and Tea Shawlette
450 yds. Fingering wt.



AT10 - Textur Cowl
200 yds. Worsted wt.



MW09 - Thunder Moon
400 yds. Fingering wt.



AK62 - Tongore Scarf
360 yds. Bulky wt.



JL35 - Triangle Trio Shawl
700 yds. Fingering wt.



BI28 - Troika
200-246 yds. DK wt.



SH33 - Tyrian
400-800 yds. Fingering wt.



AR29 - Ume
700 yds. Fingering wt.



JL39 - Valdavian
800 yds. Fingering wt.



CS45 - Verduri Scarf & Mitts Set
330-1,210+ yds. Sport wt.



BB42 - Ves
800 yds. Fingering wt.



DR81 - Vignette
470 yds. Fingering wt.



SH49 - Waves and Brambles
300-600 yds. Fingering wt.



OC71 - Wild Lilies
515-525 yds. Fingering wt.



AT12 - Winchester
220-330 yds. Worsted wt.



BI21 - Windrow
350 yds. Worsted wt.



FG23 - Winter Dreams
675 yds. Fingering wt.



BI30 - Winterlong
400-425 yds. Worsted wt.



DD37 - Ye Olde Salty Sailor Hat & Cowl
400 yds. ea. Worsted wt.



AT07 - Yin Yang Shawl
370/90 yds. Lt. Fingering wt.



JL38 - Yिंगarna
450 yds. Fingering wt.



RH25 - Zephyr Cove
420 yds. Fingering wt. ea.



MT06 - Zillah
330 yds. Sport wt.



HZ49 - Zucchero
2000-2310 yds. Fingering wt.



New Socks

BB43 Sandpiper Socks by Barbara Benson



SH55 - Cherry Blossom Socks
400 yds. Fingering wt.



YT44 - Lumineux
372-481 yds. Fingering wt.



SH53 - Pussywhisker Socks
270 yds. Fingering wt.



BB43 - Sandpiper Socks
480-500 yds. Fingering wt.

Popular Socks



KV91 - Converging Flow Socks
300-400 yds. Fingering wt.



BS06 - Couplet
365-450 yds. Fingering wt.



HZ61 - Divo
400 yds. Fingering wt.



PY13 - Flue Socks
185-360 yds. Fingering wt.



KV113 - Found Object Socks
400 yds. Fingering wt.



BH35 - Frost Asters
380-645 yds. Fingering wt.



MW24 - Gauley Socks
350/50/50 yds. Fingering wt.



YT35 - Hugni
225-495 yds. DK wt.



BH42 - Kinsman
110-180 yds. Aran wt.



HZ10 - Mae Finch
400 yds. Fingering wt.



BS32 - Pomeroy
335-410 yds. Fingering wt.



SH52 - Stepping into Fall
400 yds. Fingering wt.



DD11 - Toasty Toes
Fingering wt.



DD40 - Traveling on Baltic Waves
400 yds. Fingering wt.



BH43 - U2
340-470 yds. Sport wt.



OC70 - Upland Socks
350-500 yds. Fingering wt.



KV88 - Waterspout Set
375-425 yds. Fingering wt.

OC70
Upland Socks
by OwlCat Designs



PY60 - Fresh Finish Granny Sq.
290-610 yds. Worsted wt.



DD01 - Amish Oval Rug
Bulky wt.



OC13 - End-less Squares Blanket
1,340-7,000 yds. Fingering wt.



TH19 - Finally Eva's
426 yds. Worsted wt.



AK39 - Staffa
130 yds. Super Bulky wt.



TM44 - Sweet Gemma
1,100-1,200 yds. Worsted wt.

New & Popular Home



YT38 - Aoibhinn
155 yds. Aran wt.

YT38
Aoibhinn
by Ysolda Teague



OC28 - Imbrex Mitts
140-169 yds. Sport wt.



YT42 - Inglis
220-240 yds. Sport wt.



DR94 - Melanist
393 yds. Bulky wt.



BS41 - Spindler Mitts
125-140 yds. Fingering wt.

Popular Handwear

DD38
Stopping by Woods on a Snowy Day
by Donna Druchunas

Handwear



SH41 - Akiko Mitts
250 yds. DK wt.



BS35 - Allons
140-155 yds. DK wt.



DD39 - Bavarian Byways Mitts
200 yds. Fingering wt.



KV90 - Captain Florence
200 yds. DK wt.



KV111 - Chandelier Fingerless Gloves
200 yds. Fingering wt.



PY07 - Cinnamon Sticks Fingerless
130-145 yds. Sport wt.



BH31 - Doric Mitts
55-146 yds. DK wt.



OC19 - Full Fathom Mitts
120-150 yds. DK wt.



TM08 - Give 'Em the Slip Mitts
Worsted wt.



KT11 - Hasta Mitts
95-140 yds. Worsted wt.



BS30 - Indikon
190-225 yds. Sport wt.



SC16 - Josephine Mitts
292 yds. Sport wt.



YT30 - Kaerlig
100-415 yds. Fingering wt.



JL37 - Mandarijn
300-350 yds. Fingering wt.



BS15 - On the Other Hand
235-260 yds. Fingering wt.



PY56 - Simply Classic Mitts
150-220 yds. Sport wt.



DD38 - Stopping by Woods on a Snowy...
150-200 yds. Worsted wt.



BH25 - Sun Dial
130-170 yds. Worsted wt.



CS45 - Verduri Scarf & Mitts Set
330-1,210+ yds. Sport wt.



KV88 - Waterspout Set
375-425 yds. Fingering wt.



New Hats



WW164 - Adiantum
167-254 yds. Sport wt.



WW161 - Aerial
100-246 yds. Fingering wt.



WW163 - Aileron
93-267 yds. Fingering wt.



SC111 - Coast Oak Hat
302-369 yds. Sport wt.



DR86 - Coze
90-180 yds. Super Bulky wt.



PY61 - Crisp Cables Hat
200-285 yds. Fingering wt.

DR90
Regina
by Alex Tinsley





AT16 - Curvilinear
175-350 yds. Worsted wt.



AT19 - Dayap Hat
800 yds. Fingering wt.



WW165 - Dutrieu
164-208 yds. Fingering wt.



HZ66 - Erba
390/180/180 yds. Fingering wt.



WW162 - Fabales
94-172 yds. Aran wt.



RV01 - Glitch



YT43 - Ljos
175-240 yds. Sport wt.



AT22 - Miki
360 yds. Fingering wt. ea.



MW29 - Nestlow Hat
130-170 yds. DK wt.



YT46 - Newhaven
215-240 yds. Sport wt.



WW166 - Pinua
158-270 yds. DK wt.



DR90 - Regina
435 yds. Fingering wt.



DR96 - Sambuca Noir
90 yds. Super Bulky wt.



YT47 - Saudade
250-315 yds. Fingering wt.



DR95 - Seal
130 yds. Bulky wt.



OC61 - Sima Cloche
210-250 yds. Sport wt.

Popular Hats

BC72 Rob Roy by BabyCocktails



FG01 - Al Fresco
375 yds. DK wt.



BC58 - Another Bourbon
200-250 yds. Worsted wt.



DR85 - Apex
165 yds. Aran wt.



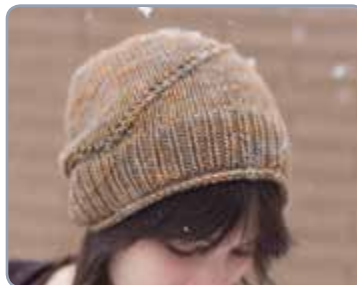
WW09 - Arkanoid
127-313 yds. Fingering wt.



SC110 - Barley Wine
276-330 yds. DK wt.



DR84 - Bemma
130 yds. Bulky wt.



DR02 - Bivouac
200 yds. Worsted wt.



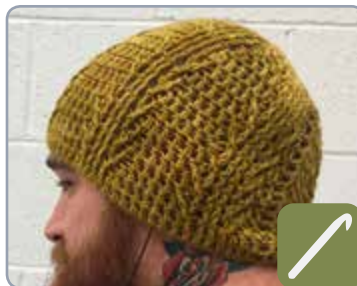
BC74 - Boilermaker
175-250 yds. DK wt.



WW157 - Boithrin
32-53/23-44 yds. Worsted wt.



AK10 - Chambord Truffle Hat
360 yds. Fingering wt.



PY08 - Cinnamon Sticks Hat
200-225 yds. Sport wt.



WW35 - Cornice
100-173 yds. DK wt.



YT31 - Curam
105-230 yds. Worsted wt.



DR38 - Darla
150 yds. DK wt.



AK26 - Gitano
150 yds. Sport wt.



WW158 - Gorton
93-181 yds. Sport wt.



WW59 - Half Theory
103-177 yds. Lt. DK wt.



OC24 - Hemlock Shade
150-175 yds. Bulky wt.



AT13 - Hishigata Hat
220 yds. Bulky wt.



SC91 - Hops Hat
165-220 yds. Worsted wt.



BB44 - I Can't Control My Brain
285 yds. Sport wt.



AT15 - Iced Eucalyptus Beret
208-215 yds. Sport wt.



FG22 - Kara-Kum Hat
DK wt.



TM12 - Knit Your Own Adventure Hat
Worsted wt.



TM40 - Land Under Wave Hat
110-140 yds. Worsted wt.



WW73 - Ledger
61-135 yds. Heavy DK/Worsted wt.



AK99 - Meribel Hats
142 yds. Bulky wt.



DR47 - Muffle
65 yds. Super Chunky wt.



TM42 - Mystic Falls Hat
180-220 yds. Sport wt.



WW89 - North Lyme
139-308 yds. Sport wt.



YT22 - Opari
140-165 yds. DK/Lt. Worsted wt.



SS05 - Ordito
200 yds. Sport wt.



DR82 - Pyranine
250 yds. Worsted wt.



WW100 - Quoin
74-142 yds. Chunky wt.



PY25 - Ridged Whirl Hat
215 yds. Worsted wt.



BC72 - Rob Roy
200 yds. Worsted wt.



PP07 - Serendipity
50-90 yds. Bulky wt.



DR83 - Stairstepper
160-275 yds. Aran wt.



AT09 - Textur Hat
200 yds. Worsted wt.



TM20 - Texture Times Two Hat
Worsted wt.



TM43 - Tierney Hat
170-200 yds. DK wt.



WW159 - Torsione
54-122/71-151 yds. DK wt.



SS02 - Tulsi
Sport wt.



DD41 - Twisted Stitch Starfish Tam
400 yds. Fingering wt.



FG13 - Two-Way Beanie
137 yds. Chunky wt.



WW160 - Urchin
85-118 yds. Chunky wt.



DR26 - Varia
200 yds. Worsted wt.



AK95 - Wicker Beanie
80-100 yds. Bulky wt.



AT12 - Winchester
220-330 yds. Worsted wt.



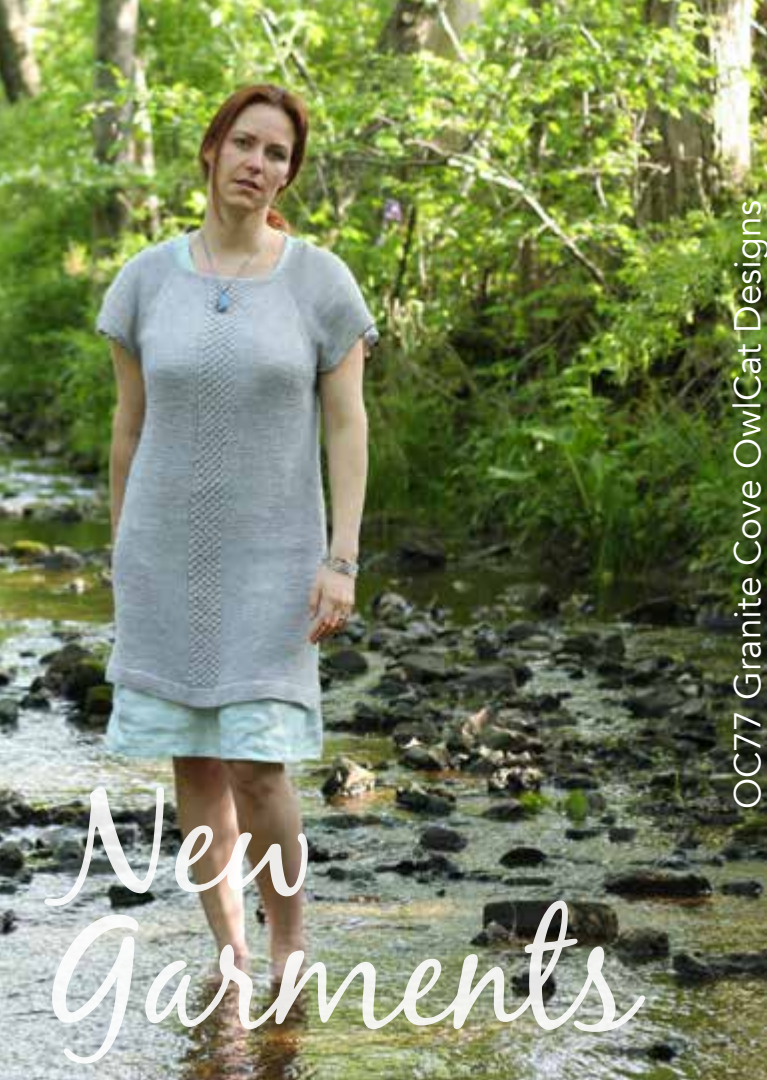
BH44 - Winnimere
190-330 yds. Sport wt.



DD37 - Ye Olde Salty Sailor Hat & Cowl
400 yds. ea. Worsted wt.



WW156 - Ziggy
169-211 yds. Worsted wt.



OC77 Granite Cove OwlCat Designs

New
Garments



OC01 - 12 Degrees F
920-1,470 yds. Bulky wt.



BC76 - Angostura
1,150-2,000 yds. Worsted wt.



YT40 - Bruntfield
1,250-2,195 yds. Fingering wt.



DR91 - Char
900-1,575 yds. DK wt.



OC78 - Creekwalk
620-1,030 yds. Sport wt.



OC77 - Granite Cove
920-1,460 yds. Sport wt.



OC44 - Nemunoki
210-390 yds. DK wt.



DR93 - Pitch
1,005-1,675 yds. Sport wt.



AH15 - Acorn Trail
703-1,463 yds. Worsted wt.



AH01 - Afterlight
Fingering wt.



AH02 - Aislinn
DK wt.



AH16 - Birch Bark
836-1,890 yds. Worsted wt.



PP01 - Bitty Bolero
200-350 yds. Aran wt.



PP02 - Bubble Frock
200-300 yds. Worsted wt.



MT01 - Campbell & 2nd
1,175-2,700 yds. Fingering wt.



FG20 - Carnelian
1,200-1,600 yds. Worsted wt.



TM03 - Chandail
Worsted wt.



MT08 - Cobb Lane
875-1,225 yds. Worsted wt.



PP03 - Country Kiddie
250-350 yds. Fingering wt.



PP04 - Country Toddler
250-350 yds. DK wt.



HZ52 - Crescere
900-1,200 yds. DK wt.



AH17 - Curlew
1,180-1,900 yds. Worsted wt.



PY54 - Dulcibella Tunic
830-1,300 yds. DK wt.



FG04 - East Bay
1,500-2,250 yds. DK wt.



FG05 - Eilat
1,000-2,000 yds. DK wt.



TH01 - Elderberry Cardigan
1,290-1,935 yds. Worsted wt.



BH46 - Essex Junction
1,340-3,350 yds. Worsted wt.



BS36 - Exit 4
980-1,260 yds. Worsted wt.



OC16 - Fox Crossing
1,175-2,325 yds. Sport wt.



PP05 - Fruit Loop
425-450 yds.



HZ60 - Fruscio
1,150-2,300 yds. Fingering wt.



SS09 - Giacca
Sport wt.



BC69 - Gin and Tonic



KT14 - Growing Up Twisted
400-1,290 yds. Fingering wt.



BI22 - Hesperus
1,185-1,655 yds. Sport wt.



MT07 - Highland Avenue
1,100-1,650 yds. Worsted wt.



TM41 - Hoist the Sails
250-600 yds. Worsted wt.



KT05 - Homa
480-880 yds. Worsted wt.



AK88 - Hoptree Cardi
1,500-2,000 yds. Lt. Fingering wt.



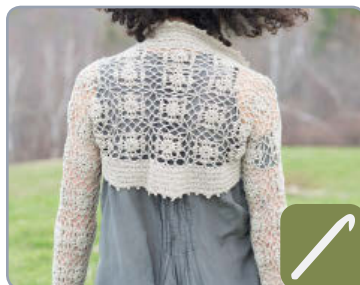
BC07 - Irish Coffee
800-1,300 yds. Aran wt.



BS38 - Journeyer
875-1,425 yds. Worsted wt.



AR13 - Kalaoch
830-1,450 yds. DK wt.



KT08 - Karuna Shrug
920-1,500 yds. Fingering wt.



FG19 - La Bamba
800-1,000 yds. Worsted wt.



KT10 - Lemuria
640-1,170 yds. Worsted wt.



KV112 - Light Bell Sleeve Shrug
1,200-1,600 yds. Fingering wt.



CS54 - Machu Picchu
1,250-2,250 yds. Lt. Sport wt.



PP06 - Milk
300-400 yds. Fingering wt.



CS47 - Milkweed Pullover
1,240-1,920 yds. Worsted wt.



BH45 - Morning Walk
447-1,300 yds. Worsted wt.



KT12 - Muddy Duck Pond Cardi
230-550 yds. Worsted wt.



KT01 - Nadi Coat
1,650-2,570 yds. Worsted wt.



CS50 - Nancy's Vest
750-1,250 yds. Sport wt.



AK33 - Nell
600-900 yds. Worsted wt.



BI26 - Newsom
1,268-1,920 yds. Sport wt.



KT09 - Ninti Tunic
470-816+ yds. Worsted wt.



CS20 - Old Town
750-2,250 yds. Sport wt.



SS11 - Orlo
Bulky wt.



BC57 - Plum Wine
1,350-2,150 yds. Worsted wt.



KT07 - Rupa Top
850-1,550 yds. Fingering wt.



SS04 - Salita
855-1,425 yds. Sport wt.



BC21 - Sambuca
950-1,950 yds. Worsted wt.



SC106 - Santa Cruz Cami
730-1,460 yds. Sport wt.



MT05 - Sazerac
1,600-2,900 yds. Sport wt.



KT13 - Seamless Soaker
90-190 yds. Aran wt.



BI33 - Second Grace
975-2,205 yds. Worsted wt.



SC108 - Sedona Vest
800-1,200 yds. Worsted wt.



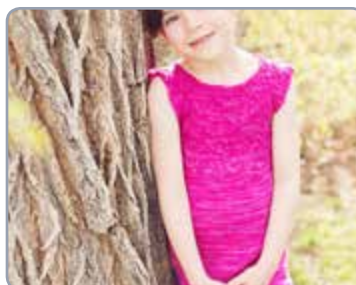
AH24 - Shorescape
1,390-2,700 yds. Fingering wt.



AH28 - Shoreside
1,060-2,270 yds. Fingering wt.



FG12 - Simon
1,125-1,875 yds. DK wt.



TH17 - Sophie Tunic
353-643 yds. DK wt.



AR44 - Sounds of Life
970-1,688 yds. Aran wt.



BC73 - Stone Fence
900-1,700 yds. Aran wt.



YT06 - Strokkur
770-1,485 yds. Aran wt.



OC66 - Summer Haze
800-1,200 yds. Fingering wt.



AH25 - Talcott
815-1,765 yds. Aran wt.



AR43 - The Knitter's Dude
1,241-2,311 yds. Worsted wt.



AR42 - The Little Dude
346-1,097 yds. Worsted wt.



AH26 - Tidal Pool
940-2,270 yds. Sport wt.



AH27 - Tucci
1,047-2,107 yds. DK wt.



AH14 - Turks & Caicos
893-1,976 yds. Sport wt.



BC11 - Vodka Lemonade
850-1,400 yds. DK wt.



BI34 - Waits
1,268-2,219 yds. Sport wt.



YT07 - Wee Chickadee
405-750 yds. Fingering wt.



PY54
Dulcibella Tunic
by Poetry in Yarn

Luxurious yarns inspired by the beauty of the American wilderness

Crater Lake

110 yds. bulky wt. ::: 100% superwash merino
Available in bags of 10 or 5

Crater Lake is a bulky 100% superwash merino. A 3-ply construction and a soft bouncy twist make this a yarn you will want to use for everything. It's perfect for baby items, adult sweaters, and everything in between. Each skein is 110 yards of super snuggly comfort. Available in 12 beautiful colors.

Yellowstone

285 yds. sport wt. ::: 80% wool, 20% silk
Available in bags of 10 or 5

Yellowstone is a hardworking and beautiful yarn, with a blend of wool and a touch of silk for strength and luster. Each skein contains 285 yards of 3-ply luxury. It's the perfect yarn for texture, lace, colorwork, and cables. We offer 13 colors inspired by the beauty of the American wilderness.



SSY006 - Ulysses



SSC000 - Snow



SSC006 - Mazama



SSY000 - Snow



SSY007 - Forest Fire



SSC001 - Old Man



SSC007 - Rim Drive



SSY001 - Old Faithful



SSY008 - Caldera



SSC002 - Phantom Ship



SSC008 - Skell



SSY002 - Bison



SSY009 - Coyote



SSC003 - Wizard Island



SSC009 - Llao



SSY003 - Eagle Peak



SSY010 - Steamboat Geyser



SSC004 - Violet-Green Swallow



SSC010 - Merriam Cone



SSY004 - Reese Creek



SSY011 - Hebgen Lake



SSC005 - Klamath



SSC011 - Mount Scott



SSY005 - Sand Verbena



SSY012 - Lewis and Clark

