

# Family Tree Maker 2017 for Windows Migration Guide

## Welcome to the FTM File Transfer Kit!

Files created in many of the older versions of Family Tree Maker must be converted before you can continue working with them in Family Tree Maker 2017 for Windows.

That's why we prepared this Transfer Kit. It has everything you need to make a simple, smooth, and safe migration to the latest versions of Family Tree Maker. Please carefully read the information on this page to find the right tool for you and get detailed instructions on the best way to move your files.

## Moving old Mac and Windows files to FTM 2017 for Windows

Click the option which best matches the version of Family Tree Maker that you used to create your files:

**FTM v 1-2 for Mac**  
.FTMD or .FTMM

**FTM v 1-4 for Windows  
(1989-1996)**  
.FTW or .FBK

**FTM v 5-16  
(1998-2006)**  
.FTW or .FBK

**FTM 2008-2014.1**  
.FTM or .FTMB

**Any FTM for Windows**  
.FBC, .AFT, .GED (<5.5)

## Versions that don't require conversion

Files created in Family Tree Maker versions 5 to 16 (1998-2006, .FTW or .FBK), files created in Family Tree Maker 2008-2014.1, and files created in Family Tree Maker for Mac 3.1 will open in Family Tree Maker 2017 without prior conversion.

However, the safest way to move your tree is to create a backup file in the version of FTM where it currently is, and then restore the tree from that file in the latest version of Family Tree Maker. Refer to the [Moving a tree using a backup file](#) section for more information.

## Conversion with Family Tree Maker 2005 Starter Edition

The following file types need to be converted to a supported format before they can be imported into Family Tree Maker 2017 for Windows:

- .FTW and .FBK files created with Family Tree Maker versions 1-4

- .FBC files
- .AFT files
- .GED files – prior to version 5.5

The instructions below will help you convert your files using the Family Tree Maker 2005 Starter Edition.

If you have not installed Family Tree Maker 2005 Starter Edition, see [Installation of Family Tree Maker 2005 Starter Edition](#) at the end of this document.

**Note:** Family Tree Maker 2005 Starter Edition has a 14-day free trial period. Once the 14-day free trial period is over, the Starter Edition can no longer be used. Therefore, we recommend installing it only when you have received your new Family Tree Maker software and are ready to convert your files.

The conversion process will update your file to the Family Tree Maker 2005 file format, so it is a good idea to create a separate backup file with your current version of the software before you start the conversion process.

### Conversion of .FTW Files

1. Make sure **Family Tree Maker 2005 Starter Edition** is installed on your Windows PC (see the [Installation of Family Tree Maker 2005 Starter Edition](#) section of this document).
2. Open Family Tree Maker 2005 Starter Edition, and then click the **Open Existing** button or choose **Open** from the **File** menu.
3. In the **Open Family File** window that appears, locate the .FTW file that you want to convert, select it, and click **Open**.
4. After Family Tree Maker 2005 Starter Edition opens the .FTW file, close the application. Your file has been automatically converted. You can now import this file into the latest version of Family Tree Maker.
5. If you have no other need for the Family Tree Maker 2005 Starter Edition, you can uninstall it from your computer.

### Conversion of .FBK, .FBC, .AFT, and .GED Files

1. Make sure **Family Tree Maker 2005 Starter Edition** is installed on your Windows PC (see the [Installation of Family Tree Maker 2005 Starter Edition](#) section of this document).
2. Open Family Tree Maker 2005 Starter Edition, and then click the **Open Existing** button or choose **Open** from the **File** menu.

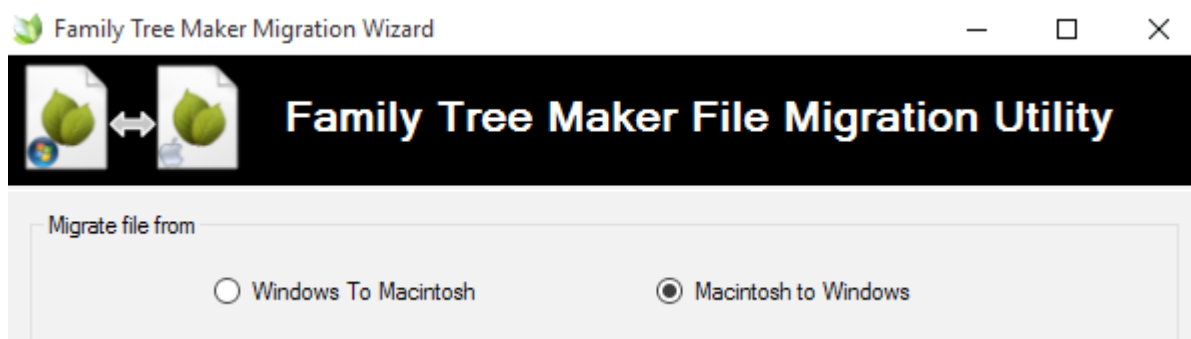
3. In the **Open Family File** window that appears, locate the file that you want to convert, select it, and click **Open**.
4. The program will display the **New Family File** window. This is because the conversion of files in .FBK, .FBC, .AFT, or .GED format requires the creation of a new working file. In the **File name** field, type a name for the new converted file that will allow you to distinguish it from your other ones, and then click the **Save** button.
5. Family Tree Maker 2005 Starter Edition will convert your file and open it when the conversion is complete. Close the application and import your converted file into the latest version of Family Tree Maker.

**Note:** If you are converting an .FBC file from a version of Family Tree Maker later than 2005 Starter Edition, when the conversion is complete you will receive an alert message saying “The file you are trying to load is from a newer version of Family Tree Maker 2005 Starter Edition and cannot be loaded. To upgrade your version, please visit our website at <http://www.genealogy.com>.” However, you can simply close this message — the .FTW file you saved in step 3 can still be imported into your new version of Family Tree Maker.

## Conversion with the File Migration Utility

### Using the File Migration Utility

1. Make sure the File Migration Utility is installed on your Windows PC (see the [Installation of the File Migration Utility](#) section of this document).
2. Open the File Migration Utility.
3. Select the Macintosh to Windows conversion option.



4. Click the **Browse** button to locate the Family Tree Maker file (.FTMM or .FTMD) that you want to convert.
5. Enter a name for the tree in the **Output tree** field and select the location where you want to save the new tree.

6. If you want to include media items linked to the tree, make sure the **Include media files** checkbox is selected.

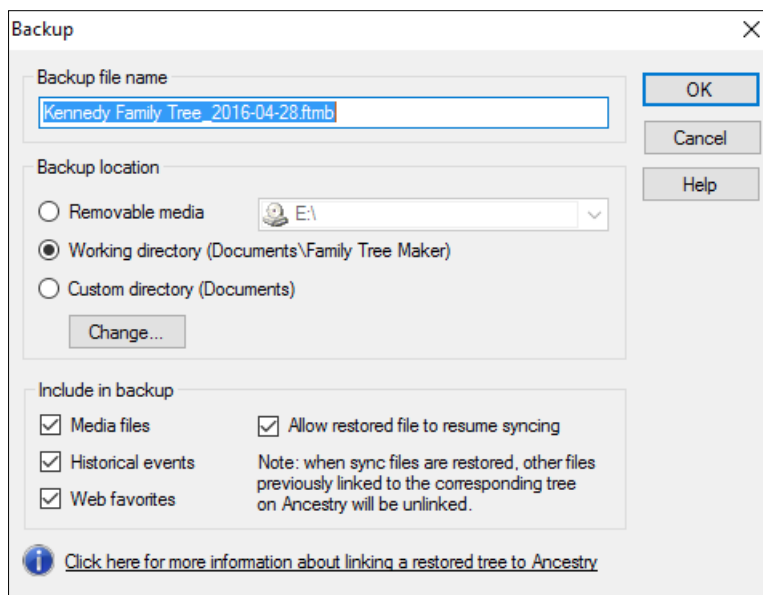
**Note:** If you are converting an .FTMM file, the utility will search for the tree's Media folder. If the tool locates the folder, your media items will be included in the new tree. If you've moved the Media folder, the utility may not be able to locate it. To ensure that your new tree contains your media items, you might want to convert a .FTMD backup file instead of a .FTMM file (backup files already include your media items).

7. Click **Create File**. A message tells you when the conversion is complete. Click **Close**. If you have no other need for the File Migration Utility, you can uninstall it from your computer.

## Moving a tree using a backup file

Some versions of Family Tree Maker produce files that can be opened in later version without conversion. For example, family tree files created in FTM 2014.1 for Windows can be opened directly in FTM 2017. But the safest way to move a tree is to create a backup and then restore it. This should ensure that all your media is transferred and relinked automatically and that syncing with your online tree, if you have one, resumes smoothly.

1. In your current version of Family Tree Maker, open the tree you want to move and choose **Backup** from the **File** menu. The **Backup** dialog appears.

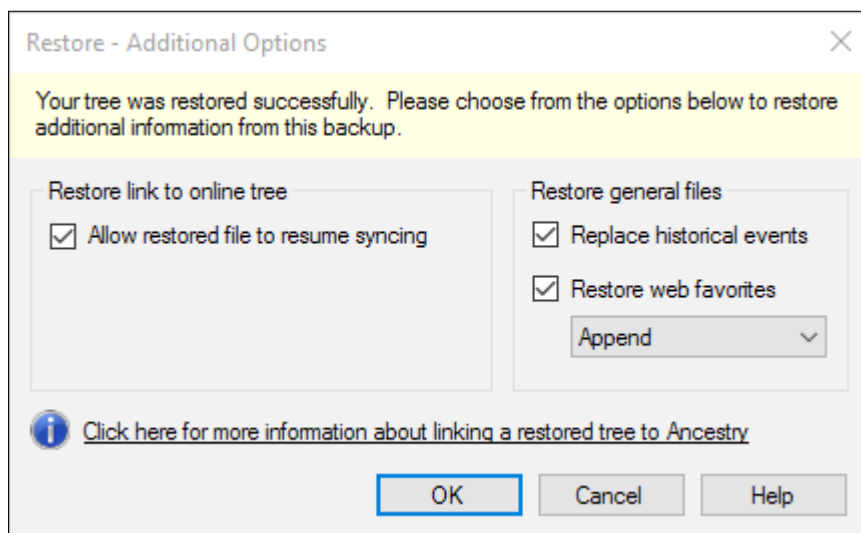


2. Choose a location for saving your backup file. Click **Removable media** if you want to save it to a USB flash drive or other removable media.

3. In the **Include in backup** section, select the items you want to have in the backup. Make sure the **Media files** checkbox is selected if you want to include your photos and other media.
4. If the current tree is linked to an online tree at Ancestry.com, select the **Allow restored file to resume syncing** checkbox. This will allow you to have the backed-up tree automatically relinked to the online tree when it's restored on your computer. Click **OK**.

**Note:** Some backup options may not be available in older versions of FTM.

5. A backup file will be saved to the location you specified.
6. Open Family Tree Maker 2017 and choose **Restore** from the **File** menu.
7. Go to the location of the backup file you created in Family Tree Maker for Windows, select it, and then click **Open**.
8. In the window that opens, enter a name and choose a location for the restored file, and then click **Save**. The file will be restored. If the tree in your backup file is not linked to one at Ancestry.com, you can skip the rest of the steps — you have finished.
9. If your backup file contains a tree that is linked to one at Ancestry.com, the **Restore - Additional Options** dialog opens. Select the **Allow restored file to resume syncing** checkbox, and then click **OK**.



10. Once your tree is restored, click the sync icon in the upper-right corner and choose **Sync Now** from the pop-up menu to make sure your restored tree is correctly synced with the Ancestry tree.

## Installation of Family Tree Maker 2005 Starter Edition

1. Connect the **Family Tree Maker** USB drive to the Windows PC on which your Family Tree Maker tree is located.
2. Open the **FTM File Transfer Kit Migration Utilities** folder and locate the **2005 Starter Edition** installer in it.
3. Double-click the **2005 Starter Edition** installer icon, and then follow the onscreen instructions.

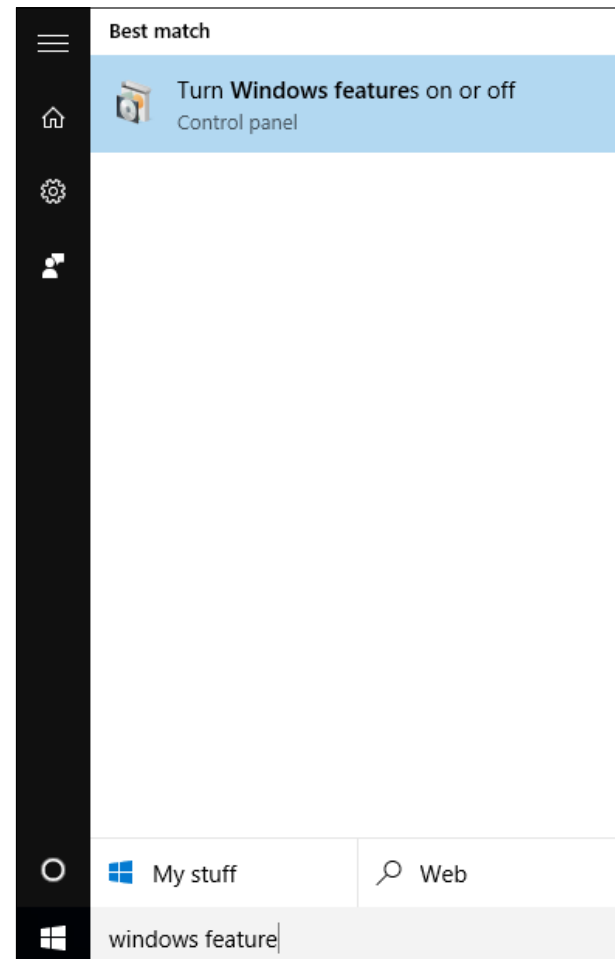
## Installation of the File Migration Utility

1. Connect the **Family Tree Maker** USB drive to the Windows PC on which your Family Tree Maker tree is located.
2. Open the **FTM File Transfer Kit Migration Utilities** folder and locate the **FileMigrationUtilitySetup** file in it.
3. Double-click the **FileMigrationUtilitySetup** icon and follow the onscreen instructions. Once installation is complete, the conversion tool will launch automatically.

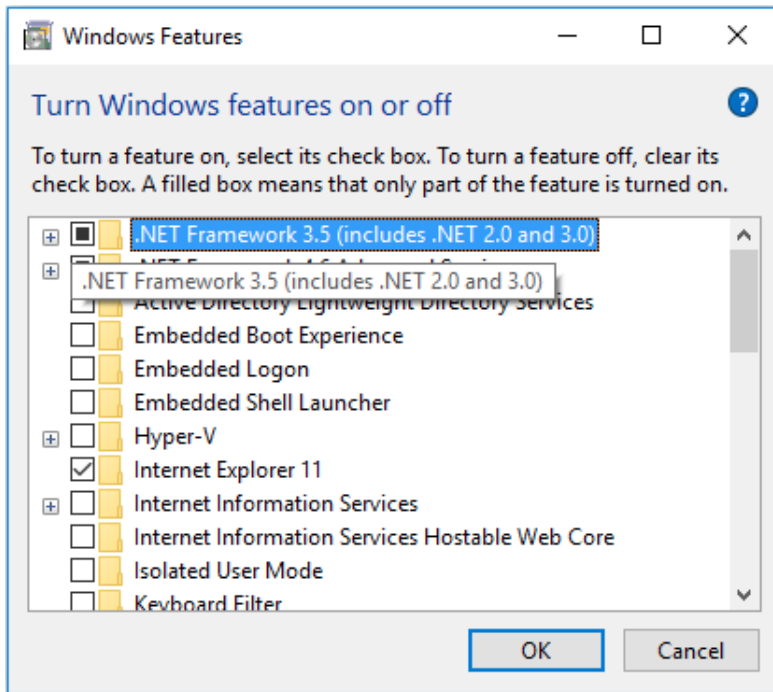
If you are using **Windows 8.1 or later**, you'll need to perform a few additional steps before you can install and start using the Family Tree Maker File Migration Utility. This is because more recent versions of Windows have .NET Framework 4.5 installed by default, while Family Tree Maker File Migration Utility requires .NET Framework 2.0. Therefore, you will need to enable .NET Framework 2.0 in your version of Windows. This will not affect .NET Framework 4.5 or harm your computer in any way.

**To enable .NET Framework 2.0 on Windows 8.1 or later, follow these steps:**

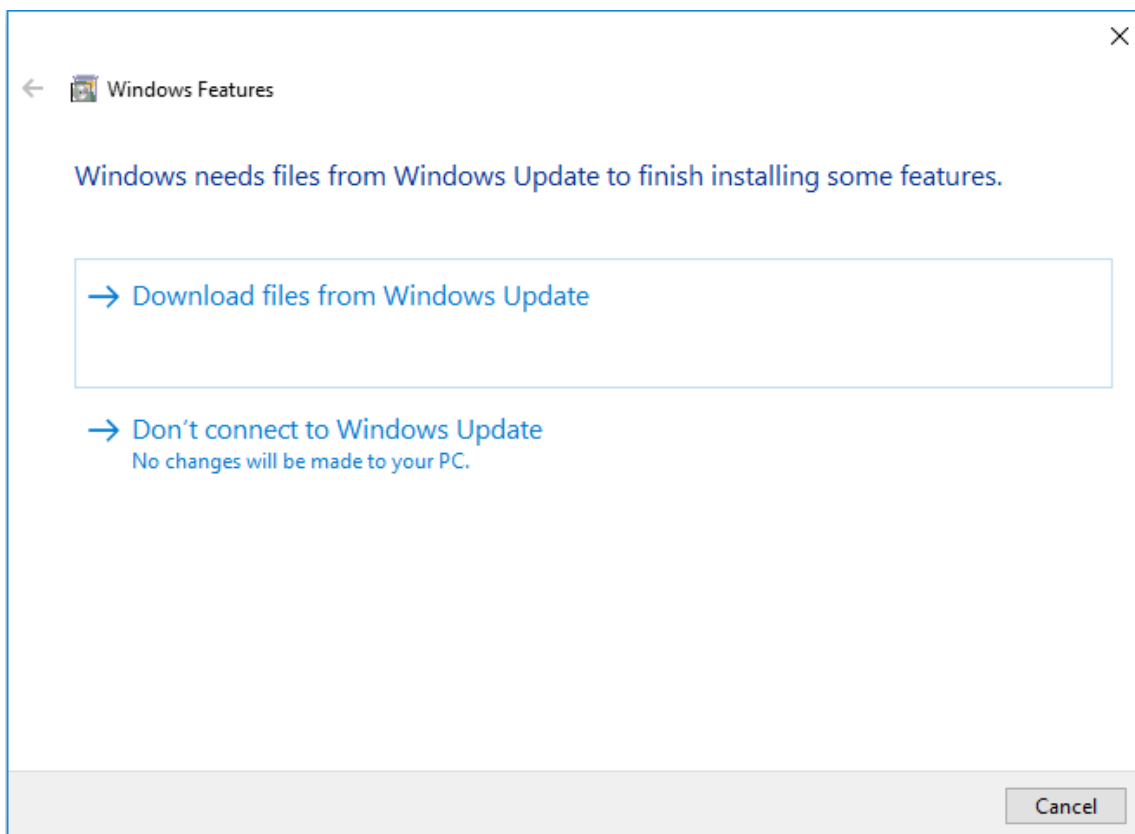
1. On the Start screen, type “**windows features**” in the search field, and then click **Turn Windows features on or off**.



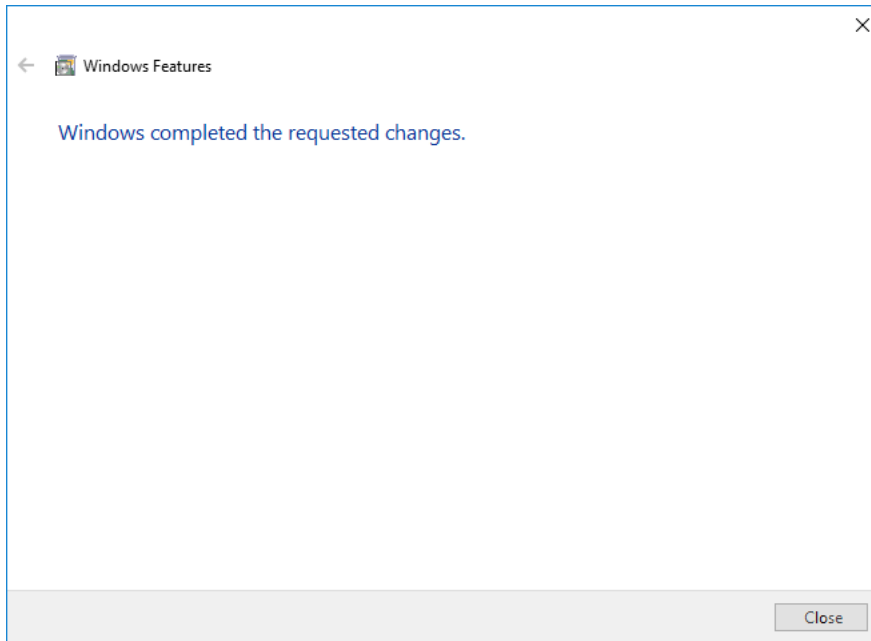
2. The **Windows Features** dialog opens. Wait for the full list of features to appear, which may take up to several minutes. Select the **.NET Framework 3.5 (includes .NET 2.0 and 3.0)** checkbox and click **OK**.



3. The installation process will begin. When it is finished, update .NET Framework by clicking **Download files from Windows Update**.



4. When the updating process is complete, the text “Windows completed the requested changes.” will appear in the **Windows Features** dialog. .NET Framework 2.0 is now enabled on your computer and you can proceed to use The Family Tree Maker File Migration Utility.



© 2017 The Software MacKiev Company.

Family Tree Maker is a registered trademark, and Software MacKiev and the Software MacKiev logos are trademarks of The Software MacKiev Company.

Ancestry, Ancestry.com and TreeSync are registered trademarks of Ancestry.com Operations, Inc.

All other trademarks are the property of their respective owners.