

# National Theatre

Feb – Aug 16



## How to book

- Online** Select your own seat online  
[nationaltheatre.org.uk](http://nationaltheatre.org.uk)  
 For an online version of this brochure  
[nationaltheatre.org.uk/season](http://nationaltheatre.org.uk/season)
- By phone** 020 7452 3000  
 Mon – Sat: 9.30am – 8pm  
 Sun: 12 noon – 3pm on performance days
- In person** South Bank, London, SE1 9PX  
 Mon – Sat: 9.30am – 11pm  
 See p37 for holiday opening times
- Other ways to get tickets** Friday Rush  
 £20 tickets are released online every Friday at 1pm  
 for the following week's performances
- Day Tickets  
 £15 / £18 tickets available in person on the day of the performance

**No booking fee online or in person.** From 1 April, £2.50 fee per transaction for phone bookings. If you choose to have your tickets sent by post, a £1 fee applies per transaction. Postage costs may vary for group and overseas bookings.



Supported using public funding by  
**ARTS COUNCIL ENGLAND**

Access symbols used in this brochure

- CAP** Captioned **TT** Touch Tour  
**AD** Audio-Described **S** Signed

TRAVELEX £15 TICKETS  
 Sponsored by



The National Theatre  
 in partnership with



NT Future is  
 supported by



Partner for  
 New Audiences



Partner for  
 Connectivity



Photographic  
 Images Partner



The National Theatre's  
 UK Touring Hotel Partner



Partner for Lighting  
 and Energy



The Dorfman Partner



A National Theatre  
 IT Partner



Pouring Partner



Official Hotel Partner  
 of the National Theatre



National Theatre Live  
 4K Technology Partner



Flight Partner  
 for wonder.land



wonder.land proudly  
 supported by



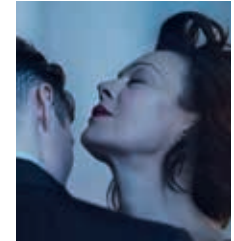
## The plays



**The Threepenny Opera**  
 Playing from 18 May



**Young Chekhov**  
 Playing from 14 July



**The Deep Blue Sea**  
 Playing from 1 June



**The Plough and the Stars**  
 Playing from 20 July



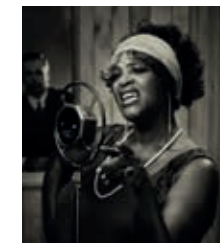
**Sunset at the Villa Thalia**  
 25 May – 4 August



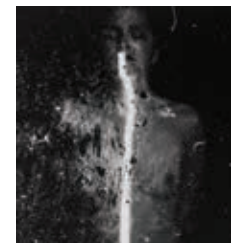
**Les Blancs**  
 Playing until 2 June



**The Suicide**  
 Playing until 25 June



**Ma Rainey's Black Bottom**  
 Playing until 18 May



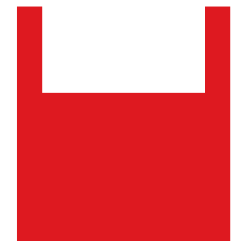
**Cleansed**  
 Playing until 5 May



**The Flick**  
 Playing until 15 June



**wonder.land**  
 Playing until 30 April



**Temporary Theatre**  
 Until 7 May

Travelex  
**£15**  
SEATS



Original photography (Rory Kinnear) by Lucy Brooks.  
 Additional © Corbis, Shutterstock

# The Threepenny Opera

by Bertolt Brecht and Kurt Weill  
 in a new translation by Simon Stephens

original German text based on Elisabeth Hauptmann's German translation of John Gay's *The Beggar's Opera*

Cast includes  
 Jamie Beppard  
 Rosalie Craig  
 Nick Holder  
 Rory Kinnear

Director  
 Rufus Norris

Designer  
 Vicki Mortimer

Music Director  
 David Shrubsole

Choreographer  
 Imogen Knight

Lighting Designer  
 Paule Constable

Sound Designer  
 Paul Arditti

Fight Directors  
 Rachel Bown Williams  
 and Ruth Cooper-  
 Brown of RC-ANNIE Ltd

London scrubs up for the coronation. The thieves are on the make, the whores on the pull, the police cutting deals to keep it all out of sight.

Mr and Mrs Peachum are looking forward to a bumper day in the beggary business, but their daughter didn't come home last night.

Mack the Knife is back in town.

A landmark of twentieth century musical theatre, *The Threepenny Opera* comes to the National Theatre in a bold new production. **Simon Stephens'** vivid and darkly comic new translation of **Brecht's** book and lyrics meets **Kurt Weill's** extraordinary score.

**Rory Kinnear** plays Macheath.

Contains filthy language and immoral behaviour.

## Olivier Theatre

Hundreds of seats at £15  
 for every performance



## Talks and events

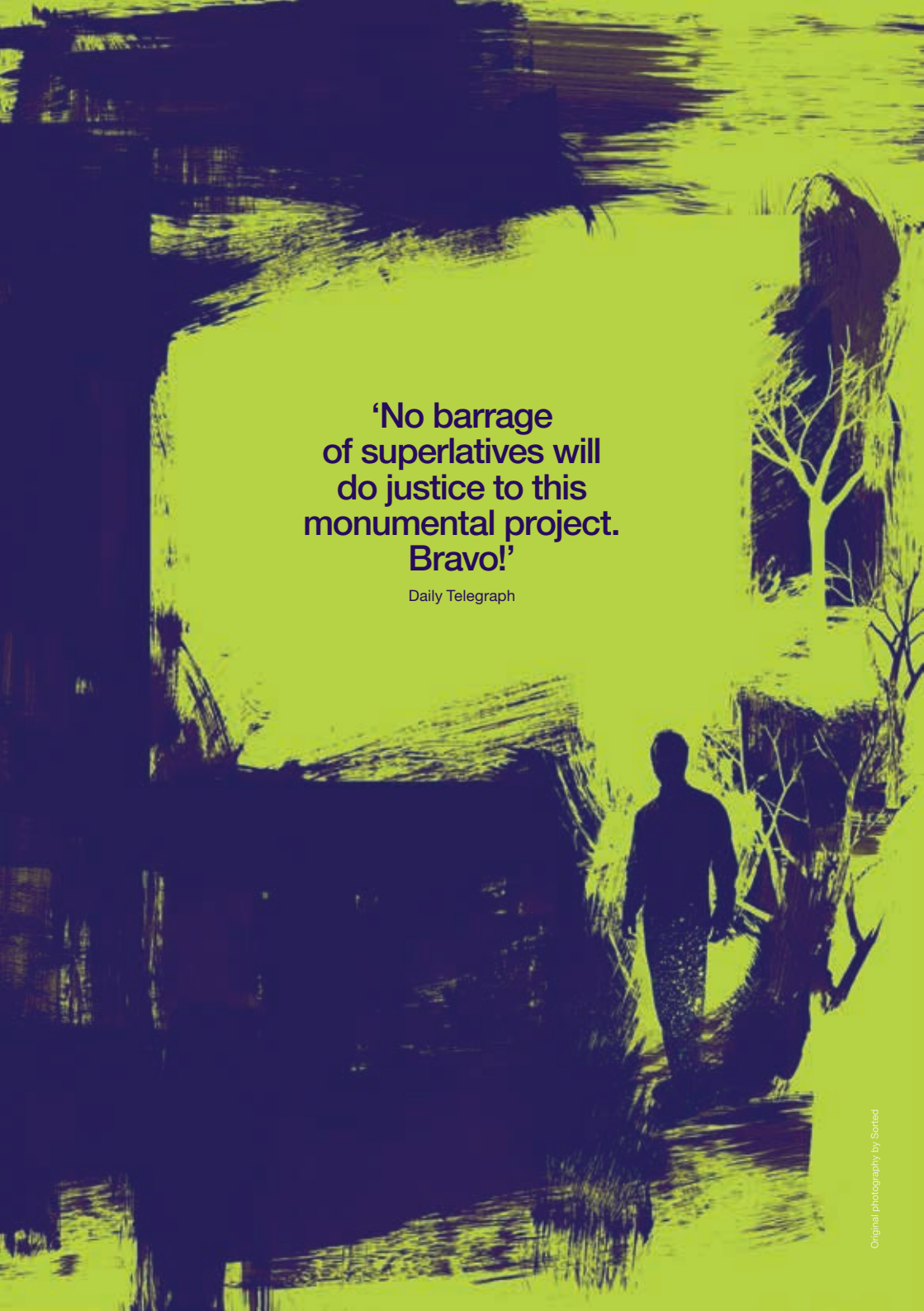
Bertolt Brecht and  
 Kurt Weill in collaboration  
 Wed 8 June, 5.30 – 6.45pm

Rufus Norris and  
 Simon Stephens  
 Mon 13 June, 6pm

Rory Kinnear  
 Mon 27 June, 3pm

MAY	
Wed 18	7.30
Thu 19	7.30
Sat 21	7.30
Mon 23	7.30
Tue 24	7.30
Wed 25	7.30
Thu 26	7.00
Fri 27	7.30
Sat 28	2.00
	7.30
Mon 30	7.30
JUNE	
Fri 3	7.30
Sat 4	2.00
	7.30
Mon 6	7.30
Tue 7	2.00
	7.30
Wed 8	7.30
Thu 9	7.30
Fri 10	7.30
Sat 11	2.00
	7.30
Mon 13	7.30
Tue 14	7.30
Wed 15	2.00
	7.30
Thu 16	7.30
Fri 17	7.30
Sat 18	2.00
	7.30
Fri 24	7.30
Sat 25	2.00
	7.30
Mon 27	7.30
Tue 28	2.00
	7.30
Wed 29	7.30
Thu 30	CAP 7.30
JULY	
Fri 1	7.30
Sat 2	CAP 2.00
	7.30
Tue 5	7.30
Wed 6	2.00
	7.30
Thu 7	7.30
AUGUST	
Sat 6	2.00
	7.30
Mon 8	7.30
Tue 9	2.00
	7.30
Wed 10	CAP 7.30
Mon 15	7.30
Tue 16	2.00
	7.30
Wed 17	7.30
Thu 18	7.30
Fri 26	AD 7.30
Sat 27	AD TT 2.00
	7.30
Mon 29	7.30
Tue 30	2.00
	7.30
Wed 31	7.30

Additional performances to be announced



'No barrage of superlatives will do justice to this monumental project. Bravo!'

Daily Telegraph

Original photography by Sotried

The Chichester Festival Theatre productions

# Young Chekhov

Platonov | Ivanov | The Seagull

by Anton Chekhov, in new versions by David Hare

Cast includes  
Emma Amos  
Pip Carter  
Anna Chancellor  
Jonathan Coy  
Nicholas Day  
Mark Donald  
Peter Egan  
Col Farrell  
Beverley Klein  
Joshua James  
Adrian Lukis  
Des McAleer  
James McArdle  
Mark Penfold  
Nina Sosanya  
Geoffrey Streatfeild  
Sarah Twomey  
David Verrey  
Olivia Vinall  
Jade Williams

Director  
Jonathan Kent

Set Designer  
Tom Pye

Costume Designer  
Emma Ryott

Lighting Designer  
Mark Henderson

Music  
Jonathan Dove

Sound Designer  
Paul Groothuis

Fight Director  
Paul Benzing



Daily Telegraph, Guardian, Independent, Sunday Times

'There's rather brilliant; brilliant; and landmark-brilliant. I have no hesitation whatsoever in assigning to the last category David Hare's inexhaustibly rich and game-changing adaptations of three of Chekhov's early plays. The whole experience is a triumph.' Independent

The *Young Chekhov* trilogy opened to overwhelming acclaim at Chichester Festival Theatre last year. The company now come to the National, offering a unique chance to explore the birth of a revolutionary dramatic voice.

Performed by one ensemble of actors, each play can be seen as a single performance or enjoyed together, either over different days or as a thrilling all-day theatrical experience.

## Platonov

Schoolteacher Mikhail Platonov has a problem – he's irresistible to women. Set in the blazing heat of a rural summer, this freewheeling comedy is a cry of youthful defiance against the compromises of middle age.

## Ivanov

Nikolai Ivanov is only 35, a radical and a romantic, but already he's feeling that he's thrown his life away. Determined not to become a small-town Hamlet, he hopes one last desperate romance may save him from a society rotten with anti-Semitism and drink. This electric play is powered both by hilarious satire and passionate self-disgust.

## The Seagull

On a summer's day in a makeshift theatre by a lake, Konstantin's cutting-edge new play is performed, changing the lives of everyone involved forever. Chekhov's masterly meditation on how the old take revenge on the young is both comic and tragic, and marks the birth of the modern stage.

## Olivier Theatre

### PLATONOV

#### JULY

Thu 14	7.30
Fri 15	7.30
Fri 29	7.00
Sat 30 *	11.45

#### AUGUST

Tue 2	7.00
Wed 3 *	11.45
Fri 12	7.00
Sat 13 *	11.45
Fri 19	7.00
Sat 20 *	11.45
Tue 23	7.00
Wed 24 *	11.45
Thu 25	7.30

#### SEPTEMBER

Fri 2	7.00
Sat 3 *	CAP 11.45

### IVANOV

#### JULY

Tue 19	7.30
Wed 20	7.30
Tue 26	7.30
Wed 27	2.00
	7.30
Sat 30 *	4.00

#### AUGUST

Wed 3 *	4.00
Sat 13 *	4.00
Sat 20 *	4.00
Mon 22	7.30
Wed 24 *	4.00

#### SEPTEMBER

Sat 3 *	CAP 4.00
---------	----------

### THE SEAGULL

#### JULY

Sat 23	7.30
Mon 25	7.30
Thu 28	7.30
Sat 30 *	8.00

#### AUGUST

Mon 1	7.30
Wed 3 *	8.00
Thu 4	7.30
Thu 11	7.30
Sat 13 *	8.00
Sat 20 *	8.00
Wed 24 *	8.00

#### SEPTEMBER

Sat 3 *	CAP 8.00
---------	----------

Additional performances to be announced



Photography (Helen McCrory) by Dean Rogers

# The Deep Blue Sea

by Terence Rattigan

Cast includes  
Helen McCrory

Director  
Carrie Cracknell

Designer  
Tom Scutt

Lighting Designer  
Guy Hoare

Music  
Stuart Earl

Sound Designer  
Peter Rice

A flat in Ladbrooke Grove, West London. 1952. When Hester Collyer is found by her neighbours in the aftermath of a failed suicide attempt, the story of her tempestuous affair with a former RAF pilot and the breakdown of her marriage to a High Court judge begins to emerge. With it comes a portrait of need, loneliness and long-repressed passion. Behind the fragile veneer of post-war civility burns a brutal sense of loss and longing.

Terence Rattigan's devastating masterpiece contains in Hester one of the greatest female roles in contemporary drama.

Helen McCrory and director Carrie Cracknell reunite following the acclaimed *Medea* in 2014.

Lyttelton Theatre

## Talks and events

Carrie Cracknell  
and Tom Scutt  
Tue 21 June, 6pm

### JUNE

Wed 1	7.30
Thu 2	7.30
Fri 3	7.30
Sat 4	7.30
Mon 6	7.30
Tue 7	7.30
Wed 8	7.00
Thu 9	7.30
Thu 16	7.30
Fri 17	7.30
Sat 18	2.15
	7.30
Mon 20	7.30
Tue 21	7.30
Mon 27	7.30
Tue 28	7.30
Wed 29	2.15
	7.30
Thu 30	7.30

### JULY

Fri 1	7.30
Thu 7	7.30
Fri 8	7.30
Sat 9	CAP 2.15
	7.30
Mon 11	7.30
Tue 12	2.15
	7.30
Fri 29	7.30
Sat 30	AD TT 2.15
	7.30

### AUGUST

Mon 1	AD 7.30
Tue 2	2.15
	7.30
Wed 3	7.30
Tue 9	7.30
Wed 10	7.30
Thu 11	2.15
	7.30
Fri 12	CAP 7.30
Sat 13	2.15
	7.30
Mon 15	7.30
Tue 16	2.15
	7.30
Wed 17	7.30

Additional performances to be announced

# The Plough and the Stars

by Sean O'Casey

Cast includes:  
Stephen Kennedy  
Justine Mitchell  
Tom Vaughan-Lawlor

Director  
Howard Davies  
Designer  
Vicki Mortimer  
Lighting Designer  
James Farncombe  
Music  
Stephen Warbeck  
Sound Designer  
Paul Groothuis

From November 1915 to Easter 1916, as the rebellion builds to a climax half a mile away, the disparate residents of a Dublin tenement go about their lives, peripheral to Ireland's history.

Sean O'Casey places a fixed lens to watch as a dozen vivid characters come and go – selfless, hilarious and desperate by turns – while the heroic myth of Ireland is fought over elsewhere.

To mark the centenary of the Easter Rising, Howard Davies, who memorably brought O'Casey's *The Silver Tassie* to the NT stage in 2014, now tackles his greatest play.

Lyttelton Theatre

## JULY

Wed 20	7.30
Thu 21	7.30
Fri 22	7.30
Sat 23	7.30
Mon 25	7.30
Tue 26	7.30
Wed 27	7.00
Thu 28	7.30

## AUGUST

Thu 4	7.30
Fri 5	7.30
Sat 6	2.15 7.30
Mon 8	7.30
Thu 18	7.30
Fri 19	<sup>CAP</sup> 7.30
Sat 20	2.15 7.30
Mon 22	7.30
Tue 23	2.15 7.30
Wed 24	7.30
Thu 25	7.30
Fri 26	7.30
Sat 27	2.15 7.30

Additional performances to be announced



Original photography by Hayden Williams

# Sunset at the Villa Thalia

a new play by Alexi Kaye Campbell

Cast includes  
 Christos Callow  
 Sam Crane  
 Glykeria Dimou  
 Elizabeth McGovern  
 Ben Miles  
 Pippa Nixon  
 Eve Polycarpou

Director  
 Simon Godwin

Designer  
 Hildegard Bechtler

Lighting Designer  
 Natasha Chivers

Music  
 Michael Bruce

Movement Director  
 Jonathan Goddard

Sound Designer  
 Tom Gibbons

April 1967: Greece is in political turmoil. Charlotte and Theo have retreated to a small island in search of peace and inspiration. But when they meet a charismatic American couple at the port they are seduced into making choices with devastating consequences.

This funny and passionate new play by **Alexi Kaye Campbell** (*The Pride, Apologia*) spans a decade as it explores the impact of foreign influence, planned and unintentional, on a nation and its people.

Dorfman Theatre



## Talks and events

Simon Godwin and  
 Alexi Kaye Campbell  
 Fri 17 June, 6pm

MAY	
Wed 25	7.30
Thu 26	7.30
Fri 27	7.30
Sat 28	7.30
Mon 30	7.30
Tue 31	7.30
JUNE	
Wed 1	7.00
Thu 2	7.30
Thu 9	7.30
Fri 10	7.30
Sat 11	2.30
	7.30
Thu 16	7.30
Fri 17	7.30
Sat 18	2.30
	7.30
Mon 20	7.30
Tue 21	2.30
	7.30
Wed 22	7.30
JULY	
Mon 4	7.30
Tue 5	7.30
Wed 6	7.30
Thu 7	7.30
Fri 8	7.30
Sat 9	7.30
Mon 11	7.30
Tue 12	7.30
Wed 13	7.30
Thu 14	2.30
	7.30
Fri 15	<sup>AD</sup> 7.30
Sat 16	<sup>AD TT</sup> 2.30
	7.30
Mon 18	<sup>CAP</sup> 7.30
Tue 19	7.30
Wed 20	2.30
	7.30
Thu 21	7.30
Fri 22	7.30
Sat 23	2.30
	7.30
Mon 25	7.30
Tue 26	2.30
	7.30
Wed 27	7.30
Thu 28	<sup>CAP</sup> 7.30
Fri 29	7.30
Sat 30	2.30
	7.30
AUGUST	
Mon 1	7.30
Tue 2	2.30
	7.30
Wed 3	7.30
Thu 4	2.30

Travelex  
£15  
SEAT

# Les Blancs

by Lorraine Hansberry

final text adapted by Robert Nemiroff

## Cast includes

Fola Akintola  
Sheila Atim  
Gary Beadle  
Sidney Cole  
Elliot Cowan  
James Fleet  
Clive Francis  
Daniel Francis-Swabey  
Tunji Kasim  
Paul Lavers  
Katie Lightfoot  
Anna Madeley  
Xhanti Mbonzongwana  
Anna-Maria Nabirye  
Roger Jean  
Nsengiyumva  
Siân Phillips  
Tumo Reetsang  
Cameron Robertson  
Danny Sapani  
Mark Theodore  
Karren Winchester

Director  
Yaël Farber

Designer  
Soutra Gilmour

Lighting Designer  
Tim Lutkin

Music and Sound  
Adam Cork

Movement Director  
Imogen Knight

An African country teeters on the edge of civil war. A society prepares to drive out its colonial present and claim an independent future. Racial tensions boil over. Tshembe, returned home from England for his father's funeral, finds himself in the eye of the storm.

A family and a nation fall apart under the pressure to determine their own identity as this brave, illuminating and powerful play confronts the hope and tragedy of revolution.

Written eleven years after *A Raisin in the Sun*, Lorraine Hansberry's final drama is an unknown masterpiece of the American stage and a highly theatrical search for the soul of post-colonial Africa.

'Incredibly moving. Towering, magnificent.'  
New York Times, on the original production

## Olivier Theatre

Hundreds of seats at £15  
for every performance

Production supported by  
Laura Pels International  
Foundation for Theater

Sponsored by



## Talks and events

African American Playwrights:  
The 20th Century  
Sat 27 February, 10.30am –  
4.30pm, Sun 28 February,  
11am – 3.30pm

Yaël Farber, Joi Gresham  
and Drew Lichtenberg  
Thu 31 March, 6pm

## MARCH

Tue 22	7.30
Wed 23	7.30
Thu 24	7.30
Sat 26	7.30
Mon 28	7.30
Tue 29	7.30
Wed 30	7.00
Thu 31	7.30

## APRIL

Mon 4	7.30
Tue 5	2.00
	7.30
Wed 6	7.30
Thu 7	7.30
Wed 13	7.30
Thu 14	2.00
	7.30
Fri 15	7.30
Sat 16	2.00
	7.30
Fri 22	7.30
Sat 23	2.00
	7.30
Mon 25	7.30
Tue 26	2.00
	7.30
Wed 27	7.30
Thu 28	7.30

## MAY

Tue 3	7.30
Wed 4	CAP 7.30
Thu 5	2.00
	7.30
Fri 6	AD 7.30
Sat 7	AD TT 2.00
	7.30
Mon 9	7.30
Tue 10	2.00
	7.30
Tue 31	7.30

## JUNE

Wed 1	2.00
	CAP 7.30
Thu 2	7.30



Travelex  
TICKETS  
£15

# The Suicide

by Suhayla El-Bushra, after Erdman

## Cast

Marcus Adolphy  
Ayesha Antoine  
Pal Aron  
Nathan Clarke  
Chloe Hesar  
Elizabeth Hill  
Lisa Jackson  
Michael Karim  
Paul Kaye  
Ashley McGuire  
Valentine Olukoga  
Roxanne Palmer  
Javone Prince  
Joseph Prouse  
Pooky Quesnel  
Adrian Richards  
Sule Rimi  
Tom Robertson  
Rebecca Scroggs  
Lizzie Winkler

Director  
Nadia Fall

Designer  
Ben Stones

Lighting Designer  
Paule Constable

Video Designer  
Andrzej Goulding

Music  
Danilo 'DJ' Walde

Sound Designer  
Helen Atkinson

Choreographers  
Delphine Gaborit,  
Carrie-Anne Ingrouille

Clowning  
Clive Mendus

Things are getting tough for Sam. No job, benefits stopped and stuck in a tiny flat with his girlfriend Maya and her mum. The pressure is building. It feels like there might be only one way out.

But every ending is a beginning and there are plenty of people keen to capitalise on Sam's momentous decision. From corrupt local politicians to kids trying to raise the number of views of their online videos, everyone wants a piece of Sam's demise. It scarcely matters what Sam actually wants. Faced with the promise of immortality, what's his life worth?

Suhayla El-Bushra takes the satiric masterpiece by Nikolai Erdman and smashes it into contemporary urban Britain. It's provocative, fast-paced and very funny.

## Lyttelton Theatre

Hundreds of seats at £15  
for every performance

Sponsored by



## Talks and events

Suhayla El-Bushra  
and Nadia Fall  
Thu 21 April, 6pm

In Context: Russian Comedy  
on the British Stage  
Wed 25 May, 2 – 5pm

## APRIL

Wed 6	7.30
Thu 7	7.30
Fri 8	7.30
Sat 9	7.30
Mon 11	7.30
Tue 12	7.30
Wed 13	7.00
Thu 14	7.30
Wed 20	7.30
Thu 21	7.30
Fri 22	7.30
Sat 23	2.15
	7.30
Mon 25	7.30
Tue 26	7.30

## MAY

Wed 4	7.30
Thu 5	7.30
Fri 6	7.30
Sat 7	2.15
	7.30
Wed 11	7.30
Thu 12	2.15
	7.30
Fri 13	7.30
Sat 14	CAP 2.15
	7.30
Fri 20	7.30
Sat 21	AD TT 2.15
	7.30
Mon 23	AD 7.30
Tue 24	2.15
	7.30
Wed 25	7.30

## JUNE

Fri 10	7.30
Sat 11	2.15
	7.30
Mon 13	7.30
Tue 14	7.30
Wed 15	2.15
	7.30
Wed 22	7.30
Thu 23	2.15
	7.30
Fri 24	CAP 7.30
Sat 25	2.15
	7.30



**'A masterpiece.  
Breathtaking.'**

Sunday Times

Photography (Sharon D Clarke) by Seamus Ryan

# Ma Rainey's Black Bottom

by August Wilson

## Cast

Teri Ann Bobb-Baxter  
Sharon D Clarke  
Ricardo Coke-Thomas  
John Paul Connolly  
Jermaine Dominique  
Clint Dyer  
O-T Fagbenle  
Stephen Fawkes  
Tamara Lawrance  
Tunji Lucas  
Finbar Lynch  
Stuart McQuarrie  
Lucian Msamati  
Kadeem Pearse  
Giles Terera  
Lucy Vandi

Director  
Dominic Cooke

Designer  
Uitz

Lighting Designer  
Charles Balfour

Music  
Tim Sutton

Sound Designer  
Paul Arditti

Movement Director  
Coral Messam

Fight Director  
Bret Yount

★★★★★

Daily Express, Daily Telegraph, Observer, Sunday Times

★★★★★

Daily Mail, Evening Standard, Financial Times, Guardian, Independent, The Times, Time Out, Sunday Express

**'Terrific. Sharon D Clarke leads a superb cast in this knockout production.'** Observer

Chicago, 1927. In a recording studio on the city's South Side, a battle of wills is raging.

Ma Rainey, Mother of the Blues, uses every trick in the book to fight her record producers for control of her music. Hardened by years of ill-treatment and bad deals, she's determined that 'Black Bottom', the song that bears her name, will be recorded her way.

But Levee, the band's swaggering young trumpet player, plans to catapult the band into the jazz age. His ambition puts them all in danger.

Inspired by the real-life Blues legend and infused with her music, August Wilson's play speaks powerfully of a struggle for self-determination against overwhelming odds.

**Lyttelton Theatre**

## Talks and events

African American Playwrights:  
The 20th Century  
Sat 27 February, 10.30am – 4.30pm, Sun 28 February, 11am – 3.30pm

The Music from *Ma Rainey's Black Bottom*  
Wed 16 March, 5.30 – 6.30pm

## FEBRUARY

Mon 22	7.30
Tue 23	2.15
Wed 24	7.30

## MARCH

Fri 4	7.30
Sat 5	2.15
Mon 7	7.30
Tue 8	2.15
Tue 15	7.30
Wed 16	2.15
Thu 17	7.30
Mon 21	7.30
Tue 22	7.30
Wed 23	2.15
Thu 24	7.30
Sat 26	2.15
Mon 28	7.30
Tue 29	2.15
Wed 30	7.30

## APRIL

Fri 15	7.30
Sat 16	2.15
Mon 18	7.30
Tue 19	2.15
Wed 27	7.30
Thu 28	2.15
Fri 29	7.30
Sat 30	2.15
	7.30

## MAY

Mon 2	7.30
Tue 3	2.15
Mon 9	7.30
Tue 10	7.30
Mon 16	7.30
Tue 17	7.30
Wed 18	2.15
	7.30

## FEBRUARY

Mon 22	7.30
Tue 23	7.00
Wed 24	7.30
Thu 25	2.30

## MARCH

Tue 1	7.30
Wed 2	7.30
Thu 3	2.30

	7.30
Tue 8	7.30
Wed 9	7.30
Thu 10	2.30

	7.30
Fri 11	7.30
Sat 12	2.30
	7.30
Fri 18	7.30
Sat 19	AD TT 2.30

	7.30
Mon 21	AD 7.30
Thu 31	7.30

## APRIL

Fri 1	7.30
Sat 2	2.30

	7.30
Mon 4	CAP 7.30
Tue 5	2.30

	7.30
Wed 6	7.30
Fri 22	7.30
Sat 23	CAP 2.30

	7.30
Mon 25	7.30

## MAY

Tue 3	7.30
-------	------

Wed 4	2.30
-------	------

	7.30
--	------

Thu 5	2.30
-------	------



Untitled by Birgit Kahle

## Cleansed

by Sarah Kane

Dorfman Theatre

*Cleansed* imagines a world in which language, human relationships and the body itself are pared away to bare bone.

One of Britain's most influential playwrights, **Sarah Kane (1971 – 99)** receives her National Theatre debut in an unflinching new production by **Katie Mitchell**.

Contains graphic scenes of physical and sexual violence.

### Talks and events

Katie Mitchell  
Wed 2 March, 6pm

Sarah Kane Explored:  
Staging the Unstageable  
Fri 11 March,  
10.30am – 3.30pm

Cast  
Graham Butler  
Peter Hobday  
Natalie Klamar  
Tom Mothersdale  
George Taylor  
Matthew Tennyson  
Michelle Terry

Director  
Katie Mitchell  
Set Designer  
Alex Eales

Costume Designer  
Sussie Juhlin-Wallen  
Lighting Designer  
Jack Knowles

Movement Director  
Joseph Alford

Music  
Paul Clark

Sound Designer  
Melanie Wilson

Fight Directors  
Rachel Bown Williams  
and Ruth Cooper-Brown  
of RC-ANNIE Ltd

The Dorfman Partner



Photography by Sorted

## The Flick

by Annie Baker

Dorfman Theatre

**Annie Baker's** extraordinary play arrives at the National Theatre direct from New York, where it won the Pulitzer Prize for Drama.

In a run-down movie theatre in central Massachusetts, three underpaid employees mop the floors and attend to one of the last 35-millimetre film projectors in the state. Their tiny battles and not-so-tiny heartbreaks play out in the empty aisles, becoming more gripping than the lacklustre, second-run movies on screen.

### Talks and events

35mm to Digital –  
The Changing Face  
of Film Projection  
Wed 18 May,  
5.15 – 6.15pm

Cast includes  
Jaygann Ayeh  
Louisa Krause  
Matthew Maher

Director  
Sam Gold

Designer  
David Zinn

Lighting Designer  
Jane Cox

Sound Designer  
Bray Poor

Associate  
Lighting Designer  
Isabella Byrd

Produced in association  
with Scott Rudin

The Dorfman Partner



## APRIL

Wed 13	7.00
Thu 14	7.00
Fri 15	7.00

Sat 16	7.00
Mon 18	7.00
Tue 19	7.00
Wed 20	7.00

Thu 21	1.30
Tue 26	7.00
Wed 27	1.30

	7.00
Thu 28	7.00
Fri 29	7.00
Sat 30	1.30

	7.00
--	------

## MAY

Mon 2	7.00
-------	------

Fri 6	7.00
-------	------

Sat 7	1.30
-------	------

	7.00
--	------

Mon 9	7.00
-------	------

Tue 10	1.30
--------	------

	7.00
--	------

Wed 11	7.00
--------	------

Thu 12	CAP 7.00
--------	----------

Fri 13	7.00
--------	------

Sat 14	1.30
--------	------

	7.00
--	------

Mon 16	7.00
--------	------

Tue 17	1.30
--------	------

	7.00
--	------

Wed 18	CAP 7.00
--------	----------

Thu 19	7.00
--------	------

	7.00
--	------

Fri 3	7.00
-------	------

Sat 4	AD TT 1.30
-------	------------

	7.00
--	------

Mon 6	AD 7.00
-------	---------

Tue 7	7.00
-------	------

Wed 8	1.30
-------	------

	7.00
--	------

Mon 13	7.00
--------	------

Tue 14	1.30
--------	------

	7.00
--	------

Wed 15	1.30
--------	------

	7.00
--	------

	7.00
--	------

	7.00
--	------

	7.00
--	------

	7.00
--	------

	7.00
--	------

	7.00
--	------

	7.00
--	------

	7.00
--	------

	7.00
--	------

	7.00
--	------

	7.00
--	------

	7.00
--	------

	7.00
--	------

	7.00
--	------

	7.00
--	------

	7.00
--	------

	7.00
--	------

	7.00
--	------

	7.00
--	------

**FEBRUARY**

Fri 26 7.30  
 Sat 27 CAP 2.00  
 Sun 28 7.30  
 Sun 28 2.30

**MARCH**

Wed 9 7.30  
 Thu 10 2.00  
 Fri 11 7.30  
 Sat 12 AD TT 2.00  
 Mon 14 7.30  
 Tue 15 7.30

**APRIL**

Fri 1 7.30  
 Sat 2 2.00  
 Sun 3 7.30  
 Sun 3 2.30  
 Fri 8 7.30  
 Sat 9 2.00  
 Mon 11 7.30  
 Tue 12 7.30  
 Mon 18 7.30  
 Tue 19 7.30  
 Wed 20 7.30  
 Thu 21 7.00  
 Fri 29 7.30  
 Sat 30 2.00  
 Sat 30 7.30



A co-production with Manchester International Festival

**wonder.land**

created by Damon Albarn, Moira Buffini and Rufus Norris  
 music by Damon Albarn, book and lyrics by Moira Buffini

★★★★ 'Daring. Hallucinogenic.  
 Extraordinary visual flair.' Daily Telegraph

A new musical inspired by Lewis Carroll's iconic *Alice in Wonderland*, wonder.land is a coming-of-age adventure that explores the blurred boundaries between our online and offline lives.

Suitable for 10yrs+

Cast  
 Simon Anthony  
 Sam Archer  
 Carly Bowden  
 Lois Chimimba  
 Leon Cooke  
 Nadine Cox  
 Ivan De Freitas  
 Hal Fowler  
 Anna Francolini  
 Adrian Grove  
 Paul Hilton

Joshua Lacey  
 Dylan Mason  
 Daisy Maywood  
 Enyi Okoronkwo  
 Lisa Ritchie  
 Stephanie Rojas  
 Abigail Rose  
 Golda Rosheuvel  
 Cydney Uffindell-Phillips  
 Ed Wade  
 Witney White

Director  
 Rufus Norris  
 Set Designer  
 Rae Smith  
 Projections  
 59 Productions  
 Costume Designer  
 Katrina Lindsay  
 Lighting Designer  
 Paule Constable  
 Music Supervisor  
 Tom Deering

**Oliver Theatre**  
 £50 – £15  
 Saturday evenings  
 £55 – £15

**Talks and events**

Explore the world of *wonder.land* through a series of exciting events and interactive installations.

[www.enterwonder.land](http://www.enterwonder.land)

**ANOTHER WORLD**

**LOSING OUR CHILDREN TO ISLAMIC STATE**

written by Gillian Slovo  
 developed with Nicolas Kent from his original idea

Over the last twelve months headlines have been dominated by the growth of Islamic State, and terror attacks claimed by IS have spread across the world.

What is the entity that calls itself Islamic State? Why are some young Muslim men and women from across Western Europe leaving their homes to answer the call of Jihad? And what should we do about it?

This piece of verbatim documentary theatre, written by novelist Gillian Slovo using material from the interviews she conducted and directed by Nicolas Kent, is the result of many months researching Islamic State, meeting people affected by the organisation and involved in the fight against it.

See website for cast  
 Director  
 Nicolas Kent  
 Designer  
 Lucy Sierra

Video Designer  
 Duncan McLean  
 Lighting Designer  
 Matthew Eagland  
 Sound Designer  
 Mike Winship

**Temporary Theatre**

**Talks and events**

Post-show debates  
 Thu 21 April, 9.30pm  
 Thu 28 April, 9.30pm  
 Thu 5 May, 9.30pm

**APRIL**

Sat 9 7.45  
 Mon 11 7.45  
 Tue 12 7.45  
 Wed 13 7.45  
 Thu 14 7.45  
 Fri 15 7.00  
 Sat 16 2.30  
 Sat 16 7.45  
 Mon 18 7.45  
 Tue 19 7.45  
 Wed 20 2.30  
 Thu 21 7.45  
 Fri 22 7.30  
 Sat 23 AD TT 2.30  
 Sat 23 7.45  
 Mon 25 7.45  
 Tue 26 7.45  
 Wed 27 2.30  
 Thu 28 7.45  
 Fri 29 7.30  
 Sat 30 2.30  
 Sat 30 7.45

**MAY**

Mon 2 7.45  
 Tue 3 CAP 7.45  
 Wed 4 2.30  
 Wed 4 7.45  
 Thu 5 7.30  
 Fri 6 7.45  
 Sat 7 2.30  
 Sat 7 7.45

Proudly supported by



Official make-up partner

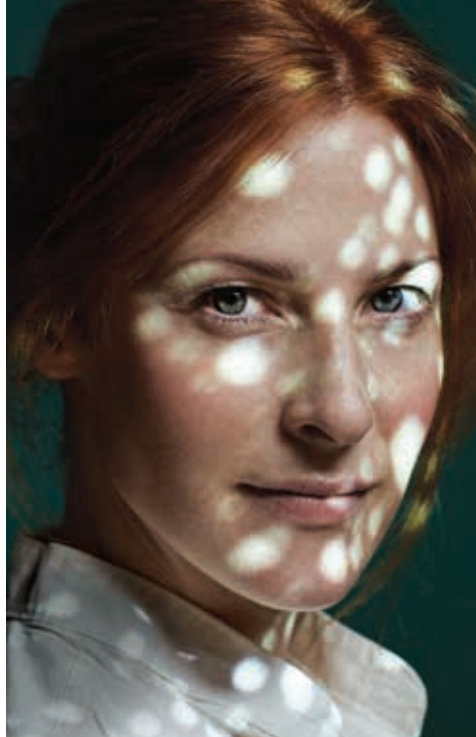


Official flight partner



Commissioned by Manchester International Festival, National Theatre and the Théâtre du Châtelet.

Production generously supported by Aréa Foundation / Ed & Betsy Cohen, Beth & Gary Glynn, a legacy gift from the Estate of Storm Kelly, Leila Maw Straus and Mahdi Yahya.



Photography (Rights: Cng) by Mads Perch



Valentin van der Meulen. 'Untitled 07', 2013. Charcoal on paper. (private collection. Copyright Valentin van der Meulen / court. Alex Schlesinger gallery)



Photography by John Benham



© iStock.com/pasajaynest

## As You Like It

by William Shakespeare

## Waste

by Harley Granville Barker

## Evening at the Talk House

a new play by Wallace Shawn

## The Solid Life of Sugar Water

by Jack Thorne

A Graeae Theatre Company and Theatre Royal Plymouth co-production

★★★★★

'Magical. Flock to this enchanted Arden.'  
Observer

★★★★★

'Remarkable. Charles Edwards is superb.'  
Guardian

★★★★★

'A deeply unsettling portrait of the  
21st century.'  
Financial Times

★★★★★ Observer

Candid, uninhibited and visceral, this play from the award-winning **Jack Thorne** is an intimate, tender portrait of loss, hurt and recovery.

A fully accessible production, integrating captions and audio description at all performances.

William Shakespeare's glorious comedy of love and change plays at the National for the first time in over thirty years. The Olivier stage is transformed into the magical Forest of Arden, where anything is possible, bringing this classic tale of exile, disguise and love to life.

Famously banned by the censors in 1907, **Harley Granville Barker's** controversial masterpiece exposes a cut-throat world of sex, suicide and sleaze amongst the political elite. **Charles Edwards** (*This House, Strange Interlude*) plays Henry Trebell.

A disconcerting dystopian vision by **Wallace Shawn**, directed by **Ian Rickson**. A reunion like no other at the almost legendary club, *The Talk House*.

Produced in association with Scott Rudin

**26 February – 19 March**

Olivier Theatre  
Playing until 5 March

£50 – £15  
Saturday evenings £55 – £15

Lyttelton Theatre  
Playing until 19 March

£50 – £15  
Saturday evenings £55 – £15

Dorfman Theatre  
Playing until 30 March

£50 – £15  
Saturday evenings £55 – £15



★★★★★

'Outstanding.' The Times  
29 March – 2 April

Temporary Theatre

Partner for New Audiences



In cinemas and on tour



### National Theatre Live

[ntlive.com](http://ntlive.com) | [f ntlive](#) [t ntlive](#)

**As You Like It**  
by William Shakespeare  
Thu 25 February, 7pm

**Hangmen**  
by Martin McDonagh  
a Royal Court Theatre production  
Thu 3 March, 7pm

Repeat screenings available in selected venues  
Screening dates vary internationally

The National Theatre's UK touring hotel partner  
**IHG** Rewards Club

### On Tour

**The Curious Incident of the Dog in the Night-Time**  
a new play by Simon Stephens  
based on the best-selling novel by Mark Haddon  
★★★★★  
'Astonishing and unmissable.' Sunday Express  
Tour begins January 2017 | [curiousonstage.com](http://curiousonstage.com)

**War Horse**  
based on the novel by Michael Morpurgo  
adapted by Nick Stafford | in association with the  
award-winning Handspring Puppet Company  
★★★★★  
'Be sure not to miss this stunning show.' The Times  
Tour on sale now | [warhorseonstage.com](http://warhorseonstage.com)

a co-production with Bristol Old Vic  
**Jane Eyre**  
devised by the Company  
based on the novel by Charlotte Brontë  
★★★★★  
'Captures the beating heart of the novel. And then some.'  
Mail on Sunday  
Tour announced for 2017. For more information check  
National Theatre website.



A co-production with Headlong

## People, Places & Things

by Duncan Macmillan

An intoxicating new play about surviving  
in the modern world.

★★★★★  
'A triumph – Denise Gough delivers an  
emotionally shattering performance.'  
Evening Standard

'Powerful. Provocative. Thrilling.' Time Out

After an acclaimed sold-out run in the Dorfman  
Theatre, this new production transfers to the  
West End for 12 weeks from 15 March.

Emma was having the time of her life. Now she's  
in rehab. Her first step is to admit that she has a  
problem. But the problem isn't with Emma, it's  
with everything else. When intoxication feels like  
the only way to survive the modern world, how  
can she ever sober up?

### West End

Wyndham's Theatre  
Charing Cross Road, WC2

Running time  
2 hours 20 mins

[peopleplacesthingsonstage.com](http://peopleplacesthingsonstage.com)

Preferred  
Card  
Partner



LIMITED  
SEASON  
15 MARCH  
– 18 JUNE

UK TOUR  
2017 – 18  
NOW ON SALE

Canterbury,  
Marlowe  
15 Sep – 14 Oct  
2017

Bristol,  
Hippodrome  
18 Oct – 11 Nov  
2017

Liverpool,  
Empire Theatre  
15 Nov – 2 Dec  
2017

Oxford,  
New Theatre  
13 Dec 2017 –  
6 Jan 2018

Brighton,  
Brighton Centre  
25 Jan – 10 Feb  
2018

Bradford,  
Alhambra  
14 Feb – 10 Mar  
2018

Nottingham,  
Concert Hall  
14 Mar – 7 Apr  
2018

Assisted  
performances  
at many venues.  
See websites  
for details.



UK tour dates now on sale for 2017-18

Photography by Birkhoff / Mogerburg

## War Horse

based on the novel by Michael Morpurgo  
adapted by Nick Stafford | in association with the  
award-winning Handspring Puppet Company

Record-breaking West End run ends 12 March.  
UK tour begins September 2017



Daily Express, Daily Telegraph, Mail on Sunday,  
Sunday Times, Sunday Express, The Times

'Be sure not to miss this stunning show.'  
The Times

Based on the novel by **Michael Morpurgo**,  
this powerfully moving and imaginative drama,  
filled with stirring music and songs, is a show  
of phenomenal inventiveness. At its heart are  
astonishing life-sized puppets by South Africa's  
**Handspring Puppet Company**, who bring  
breathing, galloping, charging horses to  
thrilling life on stage.

## West End

New London Theatre  
Drury Lane, WC2

Running time  
2 hours 40 mins

Suitable for 10 yrs+

Workshops,  
events and  
online resources

**War Horse:**  
The Final Farewell  
Sat 12 March, 5.15pm

[warhorseonstage.com](http://warhorseonstage.com)

Presented by the National Theatre  
and National Angels

Preferred  
Card  
Partner



Original photography (Luke Treadaway) by Hugo Glendinning

## The Curious Incident of the Dog in the Night-Time

a new play by Simon Stephens  
based on the best-selling novel by Mark Haddon



'A beautiful, eloquent, dazzlingly inventive  
show about the wonders of life.'  
Evening Standard

'A phenomenal combination of storytelling  
and spectacle.' The Times

Christopher has an extraordinary brain, exceptional  
at maths while ill-equipped to interpret everyday  
life. He has never ventured alone beyond the end of  
his road, he detests being touched and he distrusts  
strangers. But his detective work, forbidden by his  
father, takes Christopher on a frightening journey  
that upturns his world.

Winner of 5 Tony Awards, including Best Play.

Winner of 7 Olivier Awards, including Best New Play.

## West End

Gielgud Theatre  
Shaftesbury Avenue, W1

Running time  
2 hours 40 mins

Suitable for 11 yrs+

Workshops,  
events and  
online resources

[curiousonstage.com](http://curiousonstage.com)

CAP Sat 9 April, 2.30pm  
AD TT Sat 16 April, 2.30pm  
© Sat 7 May, 2.30pm

Original production sponsored by  
Neptune Investment Management

Preferred  
Card  
Partner



UK & IRELAND  
TOUR 2017  
ON SALE  
SOON

Salford,  
The Lowry  
Aylesbury,  
Waterside  
Theatre  
Edinburgh,  
Festival Theatre  
Leeds,  
Grand Theatre  
Bath,  
Theatre Royal  
Southampton,  
Mayflower  
Theatre  
Nottingham,  
Theatre Royal  
Dublin,  
Bord Gáis  
Energy Theatre  
Oxford,  
New Theatre  
Glasgow,  
Kings Theatre  
Plymouth,  
Theatre Royal  
Liverpool,  
Empire Theatre  
Bradford,  
Alhambra  
Woking,  
New Victoria  
Theatre  
Milton Keynes  
Theatre

Assisted  
performances  
at many venues.  
Further venues  
and dates to  
be announced.  
See websites  
for details.



Green Room burger. Photography by Alex Simms

## £22 pre-theatre menu in House Restaurant

Enjoy a two-course meal for £22 when you also book for a show. Available to book online or by phone in advance.

One £22 meal per ticket bought. Subject to availability.

### Eat

The Green Room on Upper Ground is a neighbourhood diner and garden with a relaxed atmosphere. **House** provides an elegant dining destination, serving a contemporary take on classic dishes, as well as a National Theatre-themed **Afternoon Tea**. If you're looking for something quick and fresh, visit **Kitchen**, our all-day café on the riverfront. **Terrace** offers delicious plates, perfect for sharing.

### Drink

From coffee to cocktails, the NT has unique spaces for you to enjoy. **The Understudy** boasts riverside seating and is open late, serving a range of craft beers. The **Lyttelton Bar** is perfect for pre-show and interval drinks, whilst the **Espresso Bar** serves home-made cakes and coffees. The **Olivier Café** now serves a 'seasonal dish of the day' for £7.95, available with a glass of wine for £11. [nationaltheatre.org.uk/food-and-drink](http://nationaltheatre.org.uk/food-and-drink)

### Shop

Our stunning **Bookshop** is overflowing with books, programmes, playtexts and gifts you won't find anywhere else. [shop.nationaltheatre.org.uk](http://shop.nationaltheatre.org.uk)



National Theatre Bookshop



Photography by Kerry Harrison

## 'An awesome line-up: smart, interesting, rich, varied.'

Clore Learning Centre participant

### The Clore Learning Centre

A dedicated space for people of all ages to get hands-on with theatre-making.

#### Talks and Events

Explore productions in depth with NT staff and other specialists, plus screenings, talks and insights into the NT's Archive.

#### Workshops

Learn specialist skills for all aspects of play-making.

#### Short Courses

Technical, production and performance skills led by NT experts.

#### Families

Discover the skills and secrets behind the NT's productions.

#### Young People (16 – 21)

From Q&As to workshops and exciting short courses, if you are aged 16-21 there are opportunities at the NT for you. Come and have a go.

#### Schools

Create, perform and discover theatre through a range of activities, workshops and projects.

See full programme of events [nationaltheatre.org.uk/learn](http://nationaltheatre.org.uk/learn)



## Talks and events

### Platforms

An eclectic programme of talks, discussions and interviews, offering the chance to learn more about the National's work and the arts in general.

45 mins, £5/£4 (unless stated)

📖 Followed by a book signing

[nationaltheatre.org.uk/platforms](http://nationaltheatre.org.uk/platforms)

**Joan Bakewell:**  
*Stop the Clocks*  
Mon 29 February, 6.30pm, Dorfman £4/£3 📖

**Katie Mitchell**  
*on Cleansed*  
Wed 2 March, 6pm, Dorfman, £4/£3

**Poems That Make Grown Women Cry**  
Fri 4 March, 6pm, Olivier, £4/£3 📖



**Ben Miller: The Aliens Are Coming!**  
Mon 7 March, 6.30pm, Dorfman, £4/£3 📖

**On The Solid Life of Sugar Water**  
Thu 10 March, post-show (30mins), Temporary Theatre, free  
With live Stage-to-Text transcription by STAGETEXT

**War Horse: The Final Farewell**  
Sat 12 March, 5.15pm, New London, £4/£3

**Waste and Scandal**  
Mon 14 March, 6pm, Lyttelton, £4/£3 📖



**Yaël Farber, Joi Gresham and Drew Lichtenberg on Les Blancs**  
Thu 31 March, 6pm, Olivier, £4/£3

**On Brainstorm**  
Thu 31 March, post-show (30mins), Temporary Theatre, free



**Suhayla El-Bushra and Nadia Fall on The Suicide**  
Thu 21 April, 6pm, Lyttelton, £4/£3

**Leard and Rosalind: The Biographer's Tale**  
Mon 16 May, 5.30pm, Dorfman 📖



**Facing the Fear with Bella Merlyn**  
Tue 7 June, 5.30pm, Dorfman 📖

**A Country of Refuge**  
Fri 10 June, 6pm, Dorfman 📖



**Rufus Norris and Simon Stephens on The Threepenny Opera**  
Mon 13 June, 6pm, Olivier 📖

**Simon Godwin and Alexi Kaye Campbell on Sunset at the Villa Thalia**  
Fri 17 June, 6pm, Dorfman

**Carrie Cracknell and Tom Scutt on The Deep Blue Sea**  
Tue 21 June, 6pm, Lyttelton

**Rory Kinnear on The Threepenny Opera**  
Mon 27 June, 3pm (1hr), Olivier, £6/£5

**London Theatre in the 50s**  
Fri 1 July, 6pm, Lyttelton 📖

### In Depth & In Context

Investigate the social, political and historical background to NT productions and the work of leading playwrights in more depth.

Clore Learning Centre  
[nationaltheatre.org.uk/learn](http://nationaltheatre.org.uk/learn)

**Course: Understanding As You Like It**  
Fri 26 February, Fri 4 March, 10am – 1pm, £40/£32



**Movement Workshop**  
Sat 27 February, 10am – 1pm or 2.30 – 5.30pm, £40/£32

**African American Playwrights: The 20th Century**  
Sat 27 February, 10.30am – 4.30pm, Sun 28 February, 11am – 3.30pm, £70/£55

**Sarah Kane Explored: Staging the Unstageable**  
Fri 11 March, 10.30am – 3.30pm, £20/£10/£7.50

**Film screening: My Dinner with André**  
Tue 15 March, 5pm, Free, booking required

**The Music from Ma Rainey's Black Bottom**  
Wed 16 March, 5.30 – 6.30pm, £5/£4

**Playwriting Workshop: Adapting Novels for the Stage**  
Sat 16 April, 10.30am – 5.30pm, £85/£65



**35mm to Digital – The Changing Face of Film Projection**  
Wed 18 May, 5.15 – 6.15pm, £8/£6

**Playwriting Workshop with Gary Owen**  
Mon 23 May, 10.30am – 5pm, £85/£65

**In Context: Russian Comedy on the British Stage**  
Wed 25 May, 2 – 5pm, £20/£15

**Bertolt Brecht and Kurt Weill in Collaboration**  
Wed 8 June, 5.30 – 6.45pm, £8/£6

### Celebrating Shakespeare

Events to mark the 400th anniversary of Shakespeare's death.



**The Web of Our Life: Shakespeare and...**  
(1hr), Olivier, £6/£5

**... Old Age with Simon Russell Beale**  
Tue 19 April, 5.45pm



**... Migration with Lenny Henry**  
Wed 20 April, 3pm

**... Family with Clare Higgins**  
Wed 20 April, 5.45pm

**Shakespeare at the NT**  
Fri 22 April, Clore Learning Centre and Lyttelton

**The Beginnings**  
10am (90mins), £8/£6

**The 20th Century**  
12noon (90mins), £8/£6

**The 21st Century**  
with Nicholas Hytner 2.30pm (1hr), £6/£5

**Writer for Today**  
6pm

Part of the Shakespeare400 Partnership. Coordinated by King's College London.

## Explore



Photography by Philip Vile

### Sherling High-Level Walkway

Offering visitors views into our busy backstage production workshops for set construction, scenic painting and prop-making. Open Mon – Sat, free.

### Theatre Tours

Explore the NT's architecture, backstage and unseen areas to discover the secrets that bring our work to the stage.  
[nationaltheatre.org.uk/tours](http://nationaltheatre.org.uk/tours)

### Lyttelton Lounge

A place to explore the NT's past and present from the NT Archive through exclusive digital content, including interviews, prompt scripts and early recordings. Open all day, free.

### Digital Programmes

Enhanced digital versions of some programmes to help you to find out more about the NT's productions, and go behind the scenes through exclusive material.

### Exhibitions

#### enter *wonder.land*

Enter the world of *wonder.land* in this immersive installation. Wolfson Gallery.

Sherling High-Level Walkway and Lyttelton Lounge are supported by the National Lottery through the Heritage Lottery Fund.

# Feb – Sep 2016

For performance schedules in the Temporary Theatre please see the website.

## KEY

**CAP** Captioned **TT** Touch Tour **PRESS** Press night  
**AD** Audio-Described **S** Signed **PLATFORM** p32-33  
**P** Preview performance **SAVE** Saver performances

Feb	Olivier	Lyttelton	Dorfman
Mon 22	As You Like It 7.30	Ma Rainey 7.30	Cleansed P 7.30
Tue 23	As You Like It 7.30	Ma Rainey 2.15+7.30	Cleansed PRESS 7.00
Wed 24	As You Like It 7.30	Ma Rainey 7.30	Cleansed 7.30
Thu 25	As You Like It NT LIVE 7.00	Waste 7.30	Cleansed 2.30
Fri 26	wonder.land 7.30	Waste 7.30	Talk House 8.00
Sat 27	wonder.land 2.00 CAP+7.30	Waste 2.15+7.30	Talk House 3.00+8.00
Sun 28	wonder.land 2.30		
Mon 29	As You Like It 7.30	Waste 7.30	PLATFORM: Joan Bakewell 6.30 Talk House 8.00
Mar	Olivier	Lyttelton	Dorfman
Tue 1	As You Like It 2.00+7.30	Waste 2.15	Cleansed 7.30
Wed 2			PLATFORM: Katie Mitchell 6.00 Cleansed 7.30
Thu 3	As You Like It 7.30 CAP	Waste 7.30	Cleansed 2.30+7.30
Fri 4	PLATFORM: Poems That Make Grown Women Cry 6.00 As You Like It 7.30	Ma Rainey 7.30	Talk House 8.00
Sat 5	As You Like It LAST 2.00+7.30	Ma Rainey 2.15+7.30	Talk House 3.00+8.00
Sun 6			
Mon 7			PLATFORM: Ben Miller 6.30 Talk House 8.00
Tue 8		Ma Rainey 7.30	Talk House 8.00
Wed 9	wonder.land 7.30	Ma Rainey 2.15+7.30	Cleansed 7.30
Thu 10	wonder.land 2.00+7.30	Waste 7.30	Cleansed 7.30
Fri 11	PLATFORM: Stephen Sondheim SOLD OUT 6.00 wonder.land 7.30	Waste 7.30	Cleansed 7.30
Sat 12	wonder.land 2.00 AD TT +7.30	Waste 2.15+7.30	Cleansed 2.30+7.30
Sun 13			
Mon 14	wonder.land 7.30	PLATFORM: Waste & Scandal 6.00 Waste 7.30	Talk House 8.00
Tue 15	wonder.land 7.30	Ma Rainey 7.30	Talk House 3.00+8.00
Wed 16		Ma Rainey 2.15+7.30	Talk House 8.00
Thu 17		Ma Rainey 7.30	Talk House 8.00
Fri 18		Waste 7.30	Cleansed 7.30
Sat 19		Waste LAST 2.15+7.30	Cleansed 2.30 AD TT +7.30
Sun 20			
Mon 21		Ma Rainey 7.30	Cleansed 7.30 AD
Tue 22	Les Blancs P1 7.30	Ma Rainey 7.30	Talk House 8.00
Wed 23	Les Blancs P2 7.30	Ma Rainey 2.15+7.30	Talk House 8.00
Thu 24	Les Blancs P 7.30	Ma Rainey 7.30	Talk House 3.00+8.00
Fri 25			
Sat 26	Les Blancs P 7.30	Ma Rainey 2.15 CAP+7.30	Talk House 3.00+8.00
Sun 27			
Mon 28	Les Blancs P 7.30	Ma Rainey 7.30	Talk House 8.00
Tue 29	Les Blancs P 7.30	Ma Rainey 2.15+7.30	Talk House 3.00+8.00
Wed 30	Les Blancs PRESS 7.00	Ma Rainey 7.30	Talk House LAST 3.00
Thu 31	PLATFORM: Farber, Gresham & Lichtenberg 6.00 Les Blancs 7.30		Cleansed 7.30

Apr	Olivier	Lyttelton	Dorfman
Fri 1	wonder.land 7.30		Cleansed 7.30
Sat 2	wonder.land 2.00+7.30		Cleansed 2.30+7.30
Sun 3	wonder.land 2.30		
Mon 4	Les Blancs 7.30		Cleansed 7.30 CAP
Tue 5	Les Blancs 2.00+7.30		Cleansed 2.30+7.30
Wed 6	Les Blancs 7.30	The Suicide P1 7.30	Cleansed 7.30

Apr	Olivier	Lyttelton	Dorfman
Thu 7	Les Blancs 7.30	The Suicide P2 7.30	
Fri 8	wonder.land 7.30	The Suicide P 7.30	
Sat 9	wonder.land 2.00+7.30	The Suicide P 7.30	
Sun 10			
Mon 11	wonder.land 7.30	The Suicide P 7.30	
Tue 12	wonder.land 7.30	The Suicide P 7.30	
Wed 13	Les Blancs 7.30	The Suicide PRESS 7.00	The Flick P1 7.00
Thu 14	Les Blancs 2.00+7.30	The Suicide 7.30	The Flick P2 7.00
Fri 15	Les Blancs 7.30	Ma Rainey 7.30	The Flick P 7.00
Sat 16	Les Blancs 2.00+7.30	Ma Rainey 2.15+7.30	The Flick P 7.00
Sun 17			
Mon 18	wonder.land 7.30	Ma Rainey 7.30 CAP	The Flick P 7.00
Tue 19	PLATFORM: Shakespeare & Old Age 5.45 wonder.land 7.30	Ma Rainey 2.15+7.30	The Flick PRESS 7.00
Wed 20	PLATFORMS: Shakespeare & Migration 3.00 Shakespeare & Family 5.45 wonder.land 7.30		The Suicide 7.30 The Flick 7.00
Thu 21	wonder.land 7.00	PLATFORM: El-Bushra & Fall 6.00 The Suicide 7.30	The Flick 1.30
Fri 22		PLATFORMS: Shakespeare 21 <sup>st</sup> Century 2.30 Writer for Today 6.00	
Sat 23	Les Blancs 7.30	The Suicide 7.30	Cleansed 7.30
Sun 24	Les Blancs 2.00+7.30	The Suicide 2.15+7.30	Cleansed 2.30 CAP +7.30
Mon 25	Les Blancs 7.30	The Suicide 7.30	Cleansed 7.30
Tue 26	Les Blancs 2.00+7.30	The Suicide 7.30	The Flick 7.00
Wed 27	Les Blancs 7.30	Ma Rainey 7.30	The Flick 1.30+7.00
Thu 28	Les Blancs 7.30	Ma Rainey 2.15+7.30	The Flick 7.00
Fri 29	wonder.land 7.30	Ma Rainey 7.30 AD	The Flick 7.00
Sat 30	wonder.land LAST 2.00+7.30	Ma Rainey 2.15 AD TT +7.30	The Flick 1.30+7.00

May	Olivier	Lyttelton	Dorfman
Sun 1			
Mon 2		Ma Rainey 7.30	The Flick 7.00
Tue 3	Les Blancs 7.30	Ma Rainey 2.15+7.30	Cleansed 7.30
Wed 4	Les Blancs 7.30 CAP	The Suicide 7.30	Cleansed 2.30+7.30
Thu 5	Les Blancs 2.00+7.30	The Suicide 7.30	Cleansed LAST 2.30
Fri 6	Les Blancs 7.30 AD	The Suicide 7.30	The Flick 7.00
Sat 7	Les Blancs 2.00 AD TT +7.30	The Suicide 2.15+7.30	The Flick 1.30+7.00
Sun 8			
Mon 9	Les Blancs 7.30	Ma Rainey 7.30	The Flick 7.00
Tue 10	Les Blancs 2.00+7.30	Ma Rainey 2.15+7.30	The Flick 1.30+7.00
Wed 11		The Suicide 7.30	The Flick 7.00
Thu 12		The Suicide 2.15+7.30	The Flick 7.00 CAP
Fri 13		The Suicide 7.30	The Flick 7.00
Sat 14		The Suicide 2.15 CAP +7.30	The Flick 1.30+7.00
Sun 15			
Mon 16			PLATFORM: Lear & Rosalind 5.30 Ma Rainey 7.30 The Flick 7.00
Tue 17		Ma Rainey 7.30	The Flick 1.30+7.00
Wed 18	Threepenny P1 7.30	Ma Rainey LAST 2.15+7.30	The Flick 7.00 CAP
Thu 19	Threepenny P2 7.30		The Flick 7.00
Fri 20		The Suicide 7.30	
Sat 21	Threepenny P 7.30	The Suicide 2.15 AD TT +7.30	
Sun 22			
Mon 23	Threepenny P 7.30	The Suicide 7.30 AD	
Tue 24	Threepenny P 7.30	The Suicide 2.15+7.30	
Wed 25	Threepenny P 7.30	The Suicide 7.30	Sunset P1 7.30
Thu 26	Threepenny PRESS 7.00		Sunset P2 7.30
Fri 27	Threepenny 7.30		Sunset P 7.30
Sat 28	Threepenny 2.00+7.30		Sunset P 7.30
Sun 29			
Mon 30	Threepenny 7.30		Sunset P 7.30
Tue 31	Les Blancs 7.30		Sunset P 7.30

Jun	Olivier	Lyttelton	Dorfman
Wed 1	Les Blancs 2.00+7.30 CAP	Deep Blue P1 7.30	Sunset PRESS 7.00
Thu 2	Les Blancs LAST 7.30	Deep Blue P2 7.30	Sunset 7.30
Fri 3	Threepenny 7.30	Deep Blue P 7.30	The Flick 7.00
Sat 4	Threepenny 2.00+7.30	Deep Blue P 7.30	The Flick 1.30 AD TT+7.00
Sun 5			
Mon 6	Threepenny 7.30	Deep Blue P 7.30	The Flick 7.00 AD
Tue 7			PLATFORM: Facing the Fear 5.30
	Threepenny 2.00+7.30	Deep Blue P 7.30	The Flick 7.00
Wed 8	Threepenny 7.30	Deep Blue PRESS 7.00	The Flick 1.30+7.00
Thu 9	Threepenny 7.30	Deep Blue 7.30	Sunset 7.30
Fri 10			PLATFORM: A Country of Refuge 6.00
	Threepenny 7.30	The Suicide 7.30	Sunset 7.30
Sat 11	Threepenny 2.00+7.30	The Suicide 2.15+7.30	Sunset 2.30+7.30
Sun 12			
Mon 13	PLATFORM: Norris & Stephens 6:00		
	Threepenny 7.30	The Suicide 7.30	The Flick 7.00
Tue 14	Threepenny 7.30	The Suicide 7.30	The Flick 1.30+7.00
Wed 15	Threepenny 2.00+7.30	The Suicide 2.15+7.30	The Flick LAST 1.30
Thu 16	Threepenny 7.30	Deep Blue 7.30	Sunset 7.30
Fri 17			PLATFORM: Godwin & Kaye Campbell 6.00
	Threepenny 7.30	Deep Blue 7.30	Sunset 7.30
Sat 18	Threepenny 2.00+7.30	Deep Blue 2.15+7.30	Sunset 2.30+7.30
Sun 19			
Mon 20		Deep Blue 7.30 SAVE	Sunset 7.30
Tue 21		PLATFORM: Cracknell & Scutt 6.00	
		Deep Blue 7.30	Sunset 2.30+7.30
Wed 22		The Suicide 7.30	Sunset 7.30
Thu 23		The Suicide 2.15+7.30	
Fri 24	Threepenny 7.30	The Suicide 7.30 CAP	
Sat 25	Threepenny 2.00+7.30	The Suicide LAST 2.15+7.30	
Sun 26			
Mon 27	PLATFORM: Rory Kinnear 3.00		
	Threepenny 7.30	Deep Blue 7.30	
Tue 28	Threepenny 2.00+7.30	Deep Blue 7.30	
Wed 29	Threepenny 7.30	Deep Blue 2.15+7.30 SAVE	
Thu 30	Threepenny 7.30 CAP	Deep Blue 7.30	

Jul	Olivier	Lyttelton	Dorfman
Fri 1		PLATFORM: London Theatre in the 50s 6.00	
	Threepenny 7.30	Deep Blue 7.30	
Sat 2	Threepenny 2.00 CAP+7.30		
Sun 3			
Mon 4			Sunset 7.30
Tue 5	Threepenny 7.30		Sunset 7.30
Wed 6	Threepenny 2.00+7.30		Sunset 7.30
Thu 7	Threepenny 7.30	Deep Blue 7.30	Sunset 7.30
Fri 8		Deep Blue 7.30	Sunset 7.30
Sat 9		Deep Blue 2.15 CAP+7.30	Sunset 7.30
Sun 10			
Mon 11		Deep Blue 7.30	Sunset 7.30
Tue 12		Deep Blue 2.15+7.30	Sunset 7.30
Wed 13			Sunset 7.30
Thu 14	Platonov P1 7.30		Sunset 2.30+7.30
Fri 15	Platonov P2 7.30		Sunset 7.30 AD
Sat 16			Sunset 2.30 AD TT+7.30
Sun 17			
Mon 18			Sunset 7.30 CAP
Tue 19	Ivanov P1 7.30		Sunset 7.30
Wed 20	Ivanov P2 7.30	Plough & the Stars P1 7.30	Sunset 2.30+7.30
Thu 21		Plough & the Stars P2 7.30	Sunset 7.30
Fri 22		Plough & the Stars P 7.30	Sunset 7.30
Sat 23	The Seagull P1 7.30	Plough & the Stars P 7.30	Sunset 2.30+7.30
Sun 24			
Mon 25	The Seagull P2 7.30	Plough & the Stars P 7.30	Sunset 7.30
Tue 26	Ivanov P 7.30	Plough & the Stars P 7.30	Sunset 2.30+7.30
Wed 27	Ivanov P 2.00+7.30	Plough & the Stars PRESS 7.00	Sunset 7.30

Jul	Olivier	Lyttelton	Dorfman
Thu 28	The Seagull P 7.30	Plough & the Stars 7.30 SAVE	Sunset 7.30 CAP
Fri 29	Platonov P 7.00	Deep Blue 7.30	Sunset 7.30
Sat 30	Platonov P 11.45		
	Ivanov P 4.00		
Sun 31	The Seagull P 8.00	Deep Blue 2.15 AD TT+7.30	Sunset 2.30+7.30

Aug	Olivier	Lyttelton	Dorfman
Mon 1	The Seagull P 7.30	Deep Blue 7.30 AD	Sunset 7.30
Tue 2	Platonov P 7.00	Deep Blue 2.15+7.30	Sunset 2.30+7.30
Wed 3	Platonov PRESS 11.45		
	Ivanov PRESS 4.00		
	The Seagull PRESS 8.00	Deep Blue 7.30	Sunset 7.30
Thu 4	The Seagull 7.30 SAVE	Plough & the Stars 7.30	Sunset LAST 2.30
Fri 5		Plough & the Stars 7.30	
Sat 6	Threepenny 2.00+7.30	Plough & the Stars 2.15+7.30	
Sun 7			
Mon 8	Threepenny 7.30	Plough & the Stars 7.30	
Tue 9	Threepenny 2.00+7.30	Deep Blue 7.30	
Wed 10	Threepenny 7.30 CAP	Deep Blue 7.30	
Thu 11	The Seagull 7.30	Deep Blue 2.15+7.30	
Fri 12	Platonov 7.00	Deep Blue 7.30 CAP	
Sat 13	Platonov 11.45		
	Ivanov 4.00		
	The Seagull 8.00	Deep Blue 2.15+7.30	
Sun 14			
Mon 15	Threepenny 7.30	Deep Blue 7.30	
Tue 16	Threepenny 2.00+7.30	Deep Blue 2.15+7.30	
Wed 17	Threepenny 7.30	Deep Blue 7.30	
Thu 18	Threepenny 7.30	Plough & the Stars 7.30	
Fri 19	Platonov 7.00	Plough & the Stars 7.30 CAP	
Sat 20	Platonov 11.45		
	Ivanov 4.00		
	The Seagull 8.00	Plough & the Stars 2.15+7.30	
Sun 21			
Mon 22	Ivanov 7.30 SAVE	Plough & the Stars 7.30	
Tue 23	Platonov 7.00 SAVE	Plough & the Stars 2.15+7.30 SAVE	
Wed 24	Platonov 11.45		
	Ivanov 4.00		
	The Seagull 8.00	Plough & the Stars 7.30 SAVE	
Thu 25	Platonov 7.30	Plough & the Stars 7.30 SAVE	
Fri 26	Threepenny 7.30 AD	Plough & the Stars 7.30	
Sat 27	Threepenny 2.00 AD TT+7.30	Plough & the Stars 2.15+7.30	
Sun 28			
Mon 29	Threepenny 7.30		
Tue 30	Threepenny 2.00+7.30		
Wed 31	Threepenny 7.30		

Sep	Olivier	Lyttelton	Dorfman
Thu 1	Threepenny 7.30		
Fri 2	Platonov 7.00		
Sat 3	Platonov 11.45 CAP		
	Ivanov 4.00 CAP		
	The Seagull 8.00 CAP		

#### HOLIDAY OPENING HOURS

Date	Building	Box Office by phone
Fri 25 Mar	CLOSED	CLOSED
Mon 28 Mar	4 – 11pm	12.30 – 8pm
Mon 2 May	4 – 11pm	12.30 – 8pm
Mon 30 May	12 – 11pm	12.30 – 8pm
Mon 29 Aug	12 – 11pm	12.30 – 8pm

#### SUNDAY OPENING HOURS

Date	Theatres	Understudy	Kitchen	Bookshop
6 & 27 Mar	CLOSED	CLOSED	CLOSED	CLOSED
10 Apr – 15 May	CLOSED	12 – 10pm	CLOSED	CLOSED
22 May – 24 Sep	CLOSED	12 – 6pm	12 – 6pm	12 – 6pm

## Ticket Prices

### Book early for the best seats

Prices may change according to demand. Book early to ensure the best seats at the best prices.

### No booking fee online or in person

£2.50 fee per transaction for phone bookings after 1 April 2016. Excludes Members at Priority level and above, and Access list subscribers.

All performances		Ways to save	
<b>Travelex £15 Tickets:</b> <b>Les Blancs, The Suicide</b> Hundreds of seats at every performance just £15	£35 £25 £15		Previews 1 & 2 £25 – £15 see calendar or website
Mon – Thu evening; all matinees	Fri & Sat evening	Ways to save	
<b>Travelex £15 Tickets:</b> <b>The Threepenny Opera</b> Hundreds of seats at every performance just £15	£45 £40 £34 £26 £15	£50 £45 £36 £28 £15	Previews 1 & 2 £32 – £15 see calendar or website
Mon – Thu evening; all matinees	Fri & Sat evening	Ways to save	
<b>Young Chekhov, The Deep Blue Sea, The Plough and the Stars</b>	£60* £52 £39 £29 £15	£65* £56 £44 £31 £18	Previews £39 – £15; Saver performances £49 – £15, see calendar or website
* Best seats, centre stalls. Limited availability			
<b>Young Chekhov three-show days</b>	Combined tickets available. The same seat for all three plays at reduced prices. £150*, £125, £100, £80, £45		

Dorfman Theatre	Mon – Thu evening; all matinees	Fri & Sat evening	Ways to save
<b>Cleansed</b>	£35 – £15	£40 – £15	
<b>The Flick</b>	£45 – £15	£50 – £15	Previews £38 – £15
<b>Sunset at the Villa Thalia</b>	£50 – £15	£55 – £18	Previews £42 – £15
Temporary Theatre	All performances		
<b>The Solid Life of Sugar Water</b>	£20 – £15		
<b>Brainstorm</b>	£20 – £15		
<b>Another World</b>	£25 – £15		

## Membership

### Great theatre needs great supporters

[nationaltheatre.org.uk/supportus](http://nationaltheatre.org.uk/supportus)

#### Priority Member from £80

Extended priority booking ahead of Advance Members and public booking.

#### Supporting Cast Member from £600

First priority booking and hotline to the Box Office. Use of the NT Members' bar.

#### Corporate Member from £15,000

Access to the NT hospitality areas. Free tickets, dedicated account management and priority booking.

#### Advance Member £15

Advance booking ahead of the general public.

## More ways to save

### Friday Rush

Every Friday at 1pm a limited number of £20 tickets for the following week's performances are released to buy online.

### Day Tickets

A limited number of £15/£18 tickets are available in person on the day of the performance. Seat location varies. See page 2 for opening hours. There are no Day Tickets in the Temporary Theatre.

### £15 & £18 Tickets

In the Olivier and Lyttelton theatres these stalls seats are narrower and may offer a restricted view. In the Dorfman and Temporary theatres these seats are restricted view. Two per customer per production, excluding Travelex season.

### Groups

Call 020 7452 3010 for discounts on groups of 8+ for selected productions.  
[nationaltheatre.org.uk/groups](http://nationaltheatre.org.uk/groups)

## Concessions

### Entry Pass

16-25-year-olds can access £5 tickets by joining Entry Pass.  
[nationaltheatre.org.uk/entrypass](http://nationaltheatre.org.uk/entrypass)

### Under-18s

Half price for Monday – Friday evenings and all matinees. Excludes tickets under £30 and Travelex productions.

### UK Schools, Colleges and Universities

Under-19s £12; 19-25s £15 for groups 10+ on selected performances. Call 020 7452 3010 for availability.  
[nationaltheatre.org.uk/groups](http://nationaltheatre.org.uk/groups)

### Senior Citizens

For midweek matinees, save £20 on £52 and £39 tickets in the Lyttelton and the Olivier; £10 on tickets £35 and over for Travelex productions. £30 tickets for midweek matinees in the Dorfman.

### Disabled People

£16 tickets, plus £16 companion tickets (£15 tickets on Travelex productions) are available for Access list subscribers.  
[nationaltheatre.org.uk/accesslist](http://nationaltheatre.org.uk/accesslist)

## American Express®

Card members have exciting ticket benefits for National Theatre shows. For details visit [nationaltheatre.org.uk/amex](http://nationaltheatre.org.uk/amex)



Preferred Card Partner

### Ticket Exchange

There are no refunds on tickets, but you can exchange them for a later performance or for credit. Terms and conditions and a small administration fee apply; call the Box Office for details.

All discounts are subject to availability and at the discretion of the Box Office

## Access

### Audio-Described AD

Performances for blind and visually impaired people.

### Touch Tour TT

For blind and visually impaired people. An opportunity to visit the stage, handle the props and meet members of the company.

### Captioned CAP

Captioned performances for Deaf, deafened and hard-of-hearing people.

### British Sign Language Ⓢ

### Relaxed Performance Ⓜ

Aimed at anyone who would benefit from a more relaxed performance environment including people with an autistic spectrum condition, sensory or communication disorders or a learning disability.



### Infra red audio system

Available in all theatres for every performance. Free headsets and neck loops are essential and available from the Box Office.

Large-print, CD and braille versions of this rep brochure are available on request from [access@nationaltheatre.org.uk](mailto:access@nationaltheatre.org.uk)

### Age guidance

We don't publish specific age recommendations for all our shows. For guidance on content and suitability please call 020 7452 3000. Children under four are welcome in the foyers, however they cannot be admitted to the auditoriums.

### For your safety and comfort

Strobe lighting, smoke effects and gunshots are sometimes used in productions. Details are available from the Box Office after the first Preview.

Latecomers may not be admitted. Please leave coats and any bulky items such as bags and briefcases in the free cloakrooms.

### Car Park

Car spaces in the NT car park are £8 after 5pm or if you attend a daytime ticketed event and leave before 7pm. Combined matinee/evening show rate: £14. Sunday/public holidays: £8 all day. Free parking for Blue Badge holders – validate at the Box Office. For details on accessible parking please visit [nationaltheatre.org.uk/travel](http://nationaltheatre.org.uk/travel)

Programme details are published in good faith, but changes may occasionally be necessary. Registered Charity No. 224223

Brochure design and imagery by the NT Graphic Design Studio, unless otherwise credited.

Cover photography (Daina Ennis) by Simon Sorted, with thanks to the NT Scenic Art department.

This cover was created by the Scenic Art department.

The artists create a wide and varied range of scenic elements from painted backdrops, textured surfaces to elaborately decorative interiors. Highly skilled, they have trained in traditional fine arts as well as techniques in creating textures, marbling and wood-graining. Scenic artists are responsible for bringing the designers' ideas to life as the scenery that you see on our stages.

**020 7452 3000**  
**[nationaltheatre.org.uk](http://nationaltheatre.org.uk)**

Find us online

