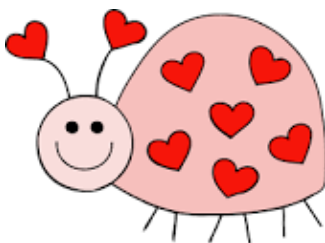


Mrs. Peggy Griebenow, Principal  
115 Upper Glenway/PO Box 10  
Palmer Lake, CO 80133  
Phone: 719-488-4760



### Special Points of Interest:

- **Principal's Message**
- **Calendar of Events**
- **PARCC/CMAS Testing**
- **News from Kindergarten and 1st Grade**
- **From the Desk of our Instructional Coach**
- **PTO News**
- **PLES Adopt 38**



# PANTHER PRIDE

Once a Panther



always a Panther...

*We believe in local, national, and global stewardship to create strong citizens who will secure a better world. This is why we educate.*

## **PRINCIPAL'S MESSAGE**

Dear Palmer Lake Parents,

It has been a busy and productive month at PLES. I hear the hum of learning when I visit classrooms. It is an exciting sound!

February will mark the last month this school year where we have a scheduled delayed start, which is Wednesday, Feb. 8th. As you know, the staff has been using this time to develop strategies and activities in their classrooms to increase student engagement. As I have visited classrooms this year, I've noticed a difference in the way we are asking kids to work. But, I really wanted to know if it was working - so I decided to ask the kids! Here are few things they shared with me about what they like about learning:

- It is more interactive - not just lots of worksheets.
- We have more class discussions.
- Teachers often change how they teach, which makes it more interesting.
- Sometimes, I get to choose my project partners.
- We do puzzles, brain teasers or a joke-of-the-day.
- I get to choose what I want to write about in our Writer's Workshop time.
- I am challenged "just right".
- I like my teacher's sense of humor.
- I like working on the computer.

There were also comments from every grade level about how much they enjoyed Specials - learning rules of various games to experimenting with new instruments in Music. Honestly, conversations like this don't get any better; this is why I am an educator.

As a staff, we will continue to work on honing our instructional toolbox for the purpose of increasing student engagement and achievement. Thank you again for your patience and support on these delayed start days - it is making a difference.

Sincerely,

Peggy Griebenow  
PLES Principal

**Parents: please remember that the Palmer Lake Elementary School front door open at 8:00 AM for the before school activities. (Cat's Meow Choir, Art Club, Before School Tutoring, Green Panther, K-Kids, and Peer Advocacy Meetings) Thank You.**



*Events in February*

- 2nd – Pre-school & Kindergarten Registration 4:30 –6:00 PM
- 3rd- Popcorn Friday
- 6th - PE Healthy Heart Kickoff
- 8th - Delayed Start –Students Start at 10:45 AM
- 8th -Kindergarten Field Trip-Post Office
- 8th-2nd Grade Famous American 6:00-7:00 PM
- 9th - Candy Heart Dance
- 10th - Teacher Work Day - No School
- 14th - Valentine’s Day Class Parties
- 16th-Report Cards Go Home
- 17th - Popcorn Friday
- 18th– Sign-up Genius Goes Live for March Conferences
- 20th - No School
- 23th—5th Grade Music Program—6:00 PM
- 28th—High Trails Parent Meeting—6:00 PM

Spirit Week January 30, to February 3<sup>rd</sup>

Super Bowl Week

**Monday—Lumberjack Day—wear a flannel shirt**

**Tuesday—Superhero Day—wear your favorite super hero jersey**

**Wednesday—All one color day—Ms. Burris really wants to wear her jumpsuit again**

**Thursday—Palmer Lake Spirit Day—wear your school spirit colors**

**Friday—Football Jersey Day—*or any sports jersey***



**PARCC/CMAS TESTING -- Coming Soon!!**

Right after we return from Spring Break, students in grade 3-6 will begin their CMAS & PARCC testing.

Many of you may wonder, why are these tests necessary? These tests are valuable to us because part of the power of Colorado’s educational improvement efforts lies in having a comprehensive system consisting of relevant and rigorous standards that are aligned to meaningful assessments. The PARCC and CMAS assessments provide us with valuable data about our programming. It also provides you, the parent, with a summative picture of your child’s progress for the year.

Please see our testing schedule below for each grade level. Each day of testing represents one session. For example, there are four sessions of math testing for 3rd graders, which has been spread out over 4 days.

If at all possible, arranging appointments for your children on non-testing days will allow them to test in their regular classroom with their peers.

|                  | Reading/Writing               | Math                              | Science                       |
|------------------|-------------------------------|-----------------------------------|-------------------------------|
| <b>3rd Grade</b> | April 11, 12, 13 - AM testing | April 17, 18, 19, 20 - AM Testing | NA                            |
| <b>4th Grade</b> | April 17, 18, 19 - PM Testing | April 5, 6, 7, 10 - AM Testing    | NA                            |
| <b>5th Grade</b> | April 4, 5, 6 - PM Testing    | April 7, 10, 12, 13 - PM Testing  | April 24, 25, 26 - PM Testing |
| <b>6th Grade</b> | April 17, 18, 19 - AM Testing | April 10, 12, 13 - AM Testing     | NA                            |

If you have questions about the PARCC/CMAS testing, please contact Mrs. Griebenow.

## News from Kindergarten

As the weather has been cold outside, we have been hard at work in kindergarten class! Our winter holiday studies will include, Martin Luther King, Jr. Day, Groundhog's Day, Valentine's Day and Presidents' Day. However, our biggest celebration this winter is fast approaching - our 100<sup>th</sup> day of school! To celebrate the 100<sup>th</sup> day we will spend the entire day doing fun activities using many different math skills!! We can't wait! As spring approaches, we will learn about our community helpers in social studies and we look forward to exploring plants and animals in our next science unit. We continue to flourish in school and absolutely love coming to Palmer Lake Elementary everyday to learn something new!



## News from 1st Grade

It is hard to believe that we are well over halfway through the school year. The children are really beginning to mature making this a prime learning time! The growth we have witnessed since we came to know them in August has been amazing. We are very proud of our students!

We are happy to have a student teacher join us this January. Mrs. Kim Briding is working in Ms. Pennell's class and has been a great addition to our team. If you happen to see her, please extend a warm welcome.

Third trimester is just around the corner. Among other things, we will be learning about soils in science, needs vs. wants and personal financial literacy in social studies, as well as place value and fractions in math. Continue to ask your child to share about what he or she is learning in school. Keep up the nightly reading as it really makes a difference as our students work to become fluent readers. We encourage students to practice their math facts regularly until the basic addition and subtraction facts are mastered. Moby Max has a program to use to practice math facts. Flash cards work well for this as well. They usually carry them at the dollar store if you need to purchase some.

Thanks for sending us such great students!

Mrs. LeSage  
Ms. Pennell  
Mrs. Briding



*From the Desk of our Instructional Coach...*

**PLES families, as the Instructional Coach, I have enjoyed getting to know our amazing students so far this year, and I feel as though the year is zooming by. It's hard to believe that we are already on the downhill slide towards spring; although I have lived in Colorado long enough to know that March and April usually means snow on the Palmer Divide! My years in education have also taught me that spring time in classrooms can be an exciting time to watch students bloom and show how much they have grown through the year, as they prepare for the next grade.**

**In a few short months, our students in grades three-six will have the opportunity to demonstrate the knowledge they have gained this year with the Colorado state assessments, PARCC and CMAS. One of my duties as an Instructional Coach is to help support the assessment team at PLES with school, district and state assessments. I understand that state testing can be a confusing, and often political topic in many communities, and I urge you to contact the school to schedule a visit with Mrs. Griebenow, Mrs. McConnell, or me if you have any questions or concerns about your child testing.**

**A great resource for families to better understand the PARCC and CMAS assessment is the Colorado Department of Education website: <https://www.cde.state.co.us/assessment/resources>**

**I encourage you to view the parent resources which explain the purpose and value of state assessments on the CDE site. Other resources available on the above linked page include FAQ, scoring information, and what to expect with the PARCC and CMAS.**

**At PLES, we will adopt a "community" theme towards state assessments this year. Staff and students will develop a positive attitude towards testing by encouraging and supporting each other so we are stronger as a team; and this winning team represents the Palmer Lake community. As a PLES family, you can help support this theme by encouraging your child to do their best. As the testing season grows closer, we will have more tips and ideas on how you can help your child prepare for testing in a positive manner.**

**Thanks for all of your support; we appreciate our amazing families who share their kiddos with us!**

**Jennifer Mitchell**

**Instructional Coach, PLES**



# PTO NEWS

**THANK YOU VOLUNTEERS-**

**YOU ARE THE BEST!!!!**

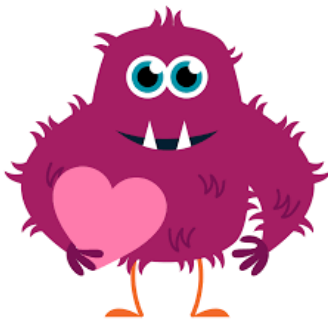
**UPCOMING PTO EVENTS:**

**February 1st —PTO MEETING**

**4:00 PM at O'Malley's**

**February 3rd—Popcorn Friday**

**February 17th—Popcorn Friday**



## July 4th Fun Run

I know it seems REALLY far away, right? Well, as many of you know this is our biggest event and our biggest fundraiser. What you might not know is that it takes months and months to plan and get sponsors. To help divide and conquer we have developed several committees. Please let us know if you are interested in helping out on a committee. Committees include, but aren't limited to:

Sponsorships

Registration

Apparel

Food and Vendors

Youth Race

If no committee calls to you think about being a sponsor. Get your name on our shirt and VIP status!

We have many opportunities for volunteers and look forward to working with all of you and enjoying another fun filled and successful July 4th Fun Run!!

## PLES Adopt 38

Palmer Lake Elementary is pleased to be part of the Adopt D38 district-wide donation program. Lewis-Palmer School District is excited with the success of Adopt 38. Teachers will receive 100% of the donation, and your donation is 100% tax deductible. Teachers utilize your donation for classroom enhancements like books, visual aids, manipulatives, technology, and learning games.

To adopt a teacher of your choice, donate \$165, the number of days in the school year. To adopt a grade of your choice, donate \$250. Also, to adopt a school or building, donate \$365, which equals a dollar a day for the school year. Please check with the school, grade or teacher for specific information on how your donation will be used. You may also visit the Adopt 38 link on the district website.

Thank you, Georgina Gittins, Adopt 38 Volunteer

### Thank you for Adopting Us!

The following families have adopted us and we are GRATEFUL for your contributions.

Mrs. Rapaport— Ingrid & David Hauck - \$165

Ms. Burris-Ingrid & David Hauck - \$165

Mrs. Wirsig- Ingrid & David Hauck- \$165

6th Grade-by David & Joslyn Kailey - \$250

PLES-Anonymous - \$2000

