



CALL TO ARTISTS

SOUND TRANSIT

LINK LIGHT RAIL: FEDERAL WAY LINK EXTENSION

ART OPPORTUNITY: LEAD ARTIST(S) -- Temporary Artwork for Construction Mitigation, PHASE 2

DESCRIPTION: Create Art Laboratory with Multiple Artists to Activate Neighborhoods Around Construction Sites on Fencing and Adjacent Areas

PROJECT BUDGET: \$20,000

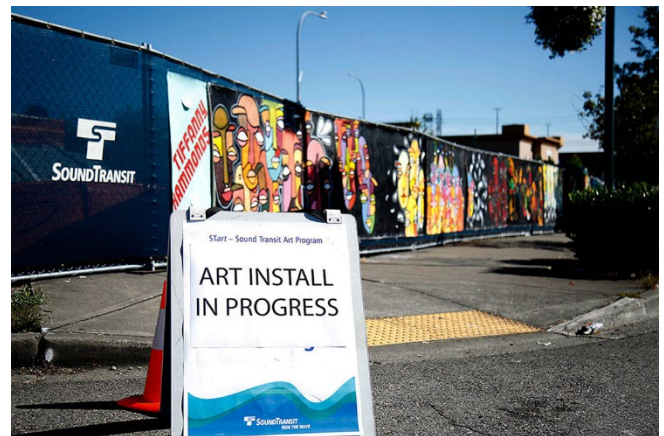
PROJECT DURATION: September, 2021 – June, 2024

E-SUBMISSION MATERIALS DUE: 5:00 P.M. ON MONDAY, JULY 12, 2021

INTRODUCTION

The Federal Way Link Extension (FWLE) extends light rail from Angle Lake Station in the city of SeaTac to the current Federal Way Transit Center. The 7.8-mile extension includes three stations in Kent/Des Moines near Highline College, South 272nd Street and the Federal Way Transit Center.

Sound Transit is seeking an artist or group of artists to act as Lead Artist(s) for Phase 2 of the Construction Mitigation Artworks. The project is in two Washington cities where new light rail stations are being built: Federal Way (at S 320th and 21st Ave S) and Kent (Hwy 99 and S 240th St).



The Lead Artist(s) will oversee the recruitment and selection of artists, implement a community engagement plan, and coordinate the realization of a multi-phase, multi-year temporary art project from developing ideas to implementation and until the end of light rail construction in 2024 when FWLE opens.

The project is structured so that the successful candidate will be able to build on the lessons learned from the first iteration of the project currently in place: 1400 feet of murals by 11 artists have been installed at two construction sites. Those artists were asked to work with or be inspired by communities surrounding the new light rail corridor. The first phase of the project, which was limited to murals, was successful. A continuation in the same line of 2D artworks is possible, though we are open to an exploration of a wider variety of artistic expressions.

The Lead Artist(s) will conceive the temporary artwork framework that softens long-term construction impacts. STart is considering Phase 2 a laboratory of purposeful and lively art opportunities and artists interventions, that will provide interest to people passing-by and who are future transit passengers. The Lead Artist will consider the limitations that active construction sites pose (high volume vehicular traffic, noise, weather exposure, public access and maintenance challenges) when crafting art opportunities.

The project is intended to be inclusive of both artists with little public art experience as well as experienced artists, and for artists from a wide variety of backgrounds and expressions, like the people who live and work in South King County. The Lead Artist(s) should have an interest and proven track record in mentoring artists with limited public art experience, and in creating innovative, successful projects on a large-scale that will offer artists visibility and engage the public. Connections to South King County arts and culture community are not required but welcome.

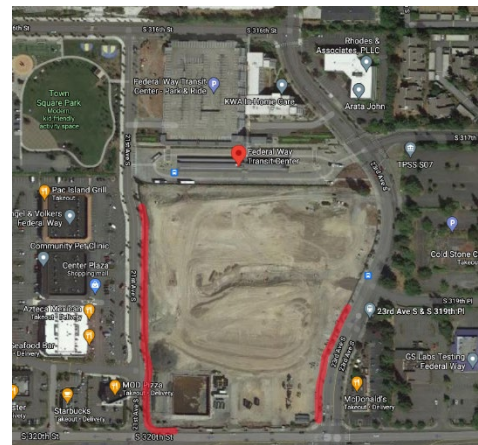
PROJECT SUMMARY & BACKGROUND:

Phase 2 of the project is intended to renew the visual interest for the remaining time of construction, engage artists with ties to South King County and to also build stronger connections with local communities and organizations. The resulting art installations should contribute to keeping the areas surrounding the construction fence lively and attractive for neighboring communities and commuters.

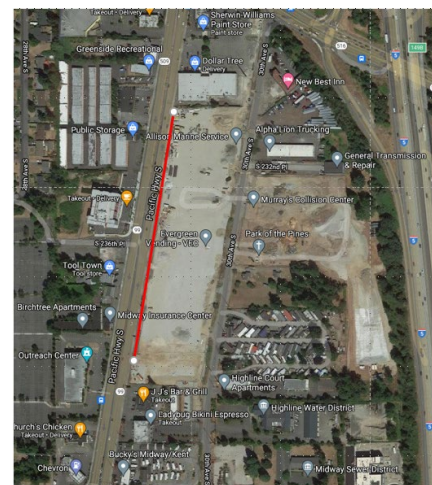
The Phase 1 of this project was installed in August and October 2020, with 11 artists commissioned to create 2D hand-painted murals and designs reproduced onto vinyl banners and Dibond boards. Much of the available space will remain the same for Phase 2.

At the KDM construction site, the identified area for temporary artworks is over 1000 feet stretch of fencing along Pacific Hwy South. At the Federal Way, 3 different stretches of fencing along 23rd Ave South (~700 ft), S 320th (~200ft), and 21st Ave S (~700ft), with the possible addition of fencing along the construction site of the future parking garage extension to the south of the Transit Center.

The construction fence around both construction sites is made of chain link fence material and consistently measures approximately 6 ft high although it may vary in grade and stability.



Federal Way Site



KDM Site

LEAD ARTIST(S) DUTIES:

The Lead Artist(s) will:

- Research project successes and challenges and apply Phase 1 experiences to develop criteria for Phase 2 artwork;
- Outreach and cultivate shortlist of artists and local organizations with ties to South King County, develop artwork (Phase 2 Artists will be paid separately);
- Develop parameters for art installations that can be affixed to the chain link fences; determine the locations for installations along the construction fence area; Possible art installations may include:
 - 2D digital work/photography to be printed on Dibond, or adhesive vinyl to be adhered to existing Dibond boards recovered from phase 1 of the project;
 - Art installation sourced from recycled materials that can be affixed to the construction fence in a durable manner;
 - Large scale weaving;
 - Incorporating signage identifying participating artists;
- Propose and develop a plan for re-use of artwork material (if not recyclable) after the construction fences come down, and oversee the de-installation/dispersion process;
- Collaborate with Sound Transit Project Manager to review artwork designs and determine whether weight, wind load, material and technical issues are met;
- Collaborate with STart Project Manager to oversee artwork installations. More than one phase of installations may occur;
- Work with STart Staff on maintenance throughout project completion (end of construction, or when the fence are taken down).

The Lead Artist(s) is/are eligible to create his or her own temporary artwork for the Construction Fence Temporary Artwork project.

START / SOUND TRANSIT ART PROGRAM – BACKGROUND:

Sound Transit allocates 1% of project construction costs to incorporate the work and thinking of artists in major facilities the agency builds. Art within the regional transit system includes signature art, functional integrated art and temporary art that all contribute to a sense of place and belonging. Sound Transit’s Art Program (STart) works with local communities, design professionals and transit partners to select artists and artworks appropriate for each project.

APPLICATION MATERIALS

Applicants should submit the following materials through the Survey Monkey application (link below):

<https://www.surveymonkey.com/r/K3DDZ72>

LETTER OF INTEREST:

In a short summary (no longer than one page), describe what interests you about the Federal Way Link Extension Temporary Artwork project and what has prepared you for working on a large-scale, exterior construction fence project, with multiple artists. The letter of interest should outline your general approach for how you would structure the project, and detail your interest in engaging artists from South King County and community organizations

- **ARTIST WORK SAMPLES -- IMAGES:**

Up to ten (10) digital images in JPEG format (per Sound Transit specifications below).

Artists are encouraged to submit images of past work that best illustrate their qualifications for this project, as well as projects they've managed or that highlight their collaboration skills. If applying as a team, the team may submit up to 20 images.

- **ARTIST RESUMÉ**

For team applications please include a résumé for each team members.

Image Specifications:

- File Type: JPEG only
- Image Size: No smaller than 1200 pixels on the long side
- Image Resolution: 72 dpi
- File Size: No smaller than 2MB and no larger than 5MB
- File Name: YourLastName-001, YourLastName-00

ARTIST SELECTION PROCESS

A selection panel will review all artist work samples and application materials. The finalists of the first round will be invited to a final interview with the selection panel conducted remotely via Microsoft Teams. The finalists will be asked to prepare a 10 minute PowerPoint presentation to introduce themselves, their past work (relevant to the project), and approach to the project.

SELECTION CRITERIA

The artist(s) will be selected on the following criteria:

- Quality and strength of past work as demonstrated in the submitted application materials;
- Ability to collaborate with other artists and team members;
- Evidence of ability to think in a large scale, and to understand how to work within a limited budget using innovative materials;
- Experience with projects of a comparable scope and budget;
- Availability to start work immediately.
- Knowledge of the local art community

ELIGIBILITY:

This project is open to professional artists and artist teams in King, Pierce, and Snohomish Counties. Sound Transit staff members, selection panel members, project personnel, and immediate family members of all of the above are not eligible to apply.

ARTIST SELECTION TIMELINE:

<i>Invited Artists notified</i>	<i>June 2021</i>
<i>Deadline for application materials</i>	<i>July 12, 2021</i>
<i>1st round Artist Selection</i>	<i>July 15—20, 2021</i>
<i>Interviews of Finalists</i>	<i>July 22—30, 2021</i>
<i>Selected Artist notified</i>	<i>August 2021</i>

QUESTIONS:

Lucile Chich, Sound Transit Project Manager

Lucile.chich@soundtransit.org

