

مصنع شبك و حديد
التقنية العليا



hi-Tech

Fence and steel ind.

FENCE PRODUCTS منتجات السياج



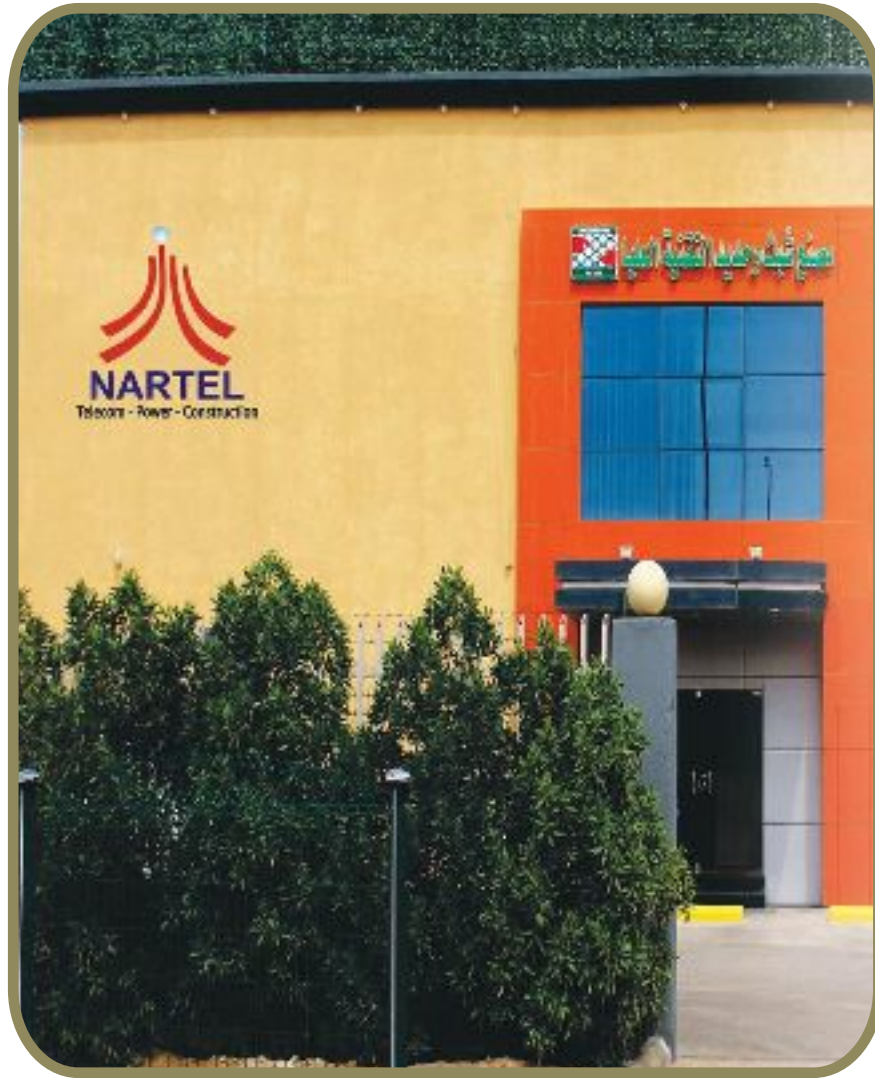


Table OF Contants



مصنع شبك وحديد التقنية العليا
Hi-Tech Fence & Steel Industries

Introduction

VISION
MISSION
OBJECTIVE



Galvanised
Chain Link Fence



ASTM Standard
Chain Link Fence



PVC Coated
Chain Link Fence



Sport Feild
Chain Link Fence



Fence Accessories



PIPES ASTM Standard



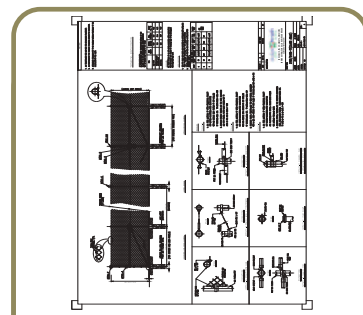
PIPES B.S Standard



Concertina Wire (Coils)



Wire Mesh Partition System



Drawing

VISION - MISSION - OBJECTIVE

Vision

To become a leading steel company in Middle East committed to serve stakeholders by offering quality products through innovative & cost effective manner in environmental friendly conditions

الرؤية

أن نصبح شركة الصلب الرائدة في الشرق الأوسط والتي تهدف إلى خدمة اصحاب المصالح من خلال تقديم منتجات ذات جودة عالية من خلال طرق مبتكرة وفعالة وذات تكلفة أقل وصديقة للبيئة

Mission

- Greater response to customer need.
- High emphasis on productivity and quality.
- Facing challenges of free market economy.
- Developing human resources & motivating employs through equitable dispensation.
- Safe working & environment friendly conditions
- Minimizing and recycling wastes.
- Good governance.
- Fulfilling social obligations.
- Improving corporate image through performance.

المهام

- تلبية حاجات العملاء .
- التركيز بفاعلية على الانتاجية والجودة .
- مواجهة تحديات اقتصاد السوق الحر .
- تطوير الموارد البشرية وتحفيز العمالة من خلال التوظيف العادل .
- العمل في بيئة آمنة وصديقة للبيئة .
- التقليل من النفايات وإعادة التدوير .
- الحكم الرشيد .
- الوفاء بالالتزامات الإجتماعية .
- تحسين صورة الشركة من خلال الاداء العام .

Objectives

- Development of corporate culture and good governance characterized by participation, consensus orientation, accountable, transparency, responsiveness, effectiveness & efficient governance rules of law.
- Keeping a constant eye on bottom line to maximize profit & rose.
- Acquiring & employing technology through r&d for increasing productivity & quality to reach dpr levels in 3 to 5 years.
- Ensuring cost competitiveness by offering though 1% annual improvement in yields, where ever required.

الأهداف

- تطوير الثقافة المؤسسية والحكم الرشيد التي تتميز بالمشاركة والاراء و المسائلة والشفافية والاستجابة والفعالية وقواعد حوكمة فعالة للقانون .
- ابقاء النظرة ثابتة على خط رقع و تعظيم الربحية .
- اكتساب وتوظيف التكنولوجيا من خلال البحث والتطوير لزيادة الانتاجية والجودة للوصول الى مستويات قياسية خلال فترة من 3 الى 5 سنوات .
- ضمان التنافسية من حيث التكلفة من خلال تقديم دعم سنوي 1% من العائدات متى تطلب ذلك .

INTRODUCTION

Hi-tech Fence and Steel industries subsidiary of NarTel for telecom, power and construction was established in 2006 by experienced professionals based on the country high demand of security requirement and construction boom.

We have two divisions:

1. Steel division: Fabrication of high quality reinforcement steel bar grade 60 with dia range of 10mm, 12mm, 14mm, 16mm, 18mm and 20mm. fabrication of flat bar with size of 80x8mm, 70x7mm, 60x6mm, 50x5mm.

2. Fence division: offers a complete range of fence products for any application such as chain link fence products, gates, HT wire fence for expressways, welded panels and wire mesh partition systems. Whether your customers' needs are aesthetic, security or a simple repair, and if you're looking for fencing products at a good price— look to hi-tech for the best products in the fencing industry today.

Chain link fence is most commonly available galvanized and PVC coated. Fence fittings, posts and rails are either powder coated or heavy PVC coated.

مقدمة.

لقد تم تأسيس مصنع شبك وحديد التقنية العليا كفرع لمؤسسة نار تل في عام ٢٠٠٦ من خلال محترفين أصحاب خبرات بناء على الطلبات المتزايدة من الخدمات الأمنية والإنشاءات.

يوجد لدينا قسمين :

١- قسم أعمال الحديد : تصنيع قضبان حديد التسليح درجة ٦٠، بأعلى جودة، باقطار ١٠مم، ١٢مم، ١٤مم، ١٦مم، ١٨مم، ٢٠مم. تصنيع القضبان المستوية (الخصوص) مقاسات ٨٠×٨٠مم، ٧٠×٧٠مم، ٦٠×٦٠مم، ٥٠×٥٠مم.

٢- قسم الشبك: نعرض أنواع كاملة من المنتجات للعديد من الاستخدامات مثل منتجات الأسياج الشبكية من السلك، البوابات و أسياج H.T. لخدمات الطرق السريعة واللوحات الملحومة وأنظمة الفواصل الشبكية، مهما كانت احتياجات العميل فهي دائما تكون رائعة وأمنة وبسيطة في التصليح. وإذا كنت ترغب في منتجات الأسياج بأسعار جيدة أطلب هاي تك لأفضل المنتجات في صناعة الأسياج حاليا.

الأسياج الشبكية متوافره مجلفنه و مغطاه PVC مثبتات الأسياج و القضبان و البوستات إما دهان بالبودره أو مغطاه بطبقة سميكة من ال PVC

Galvanised Chain Link Fence

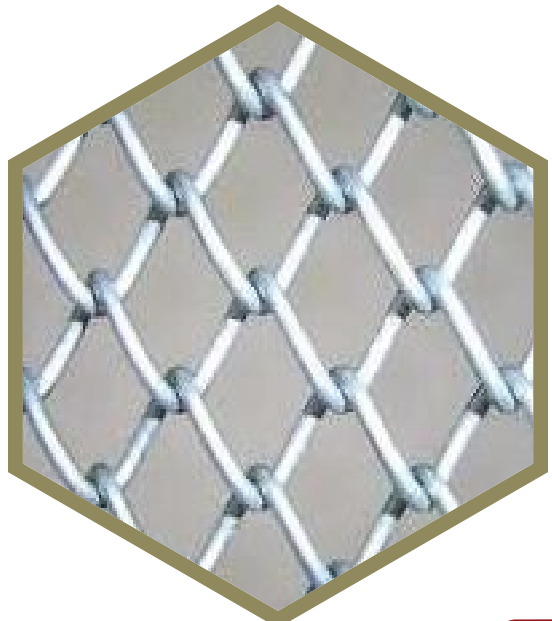
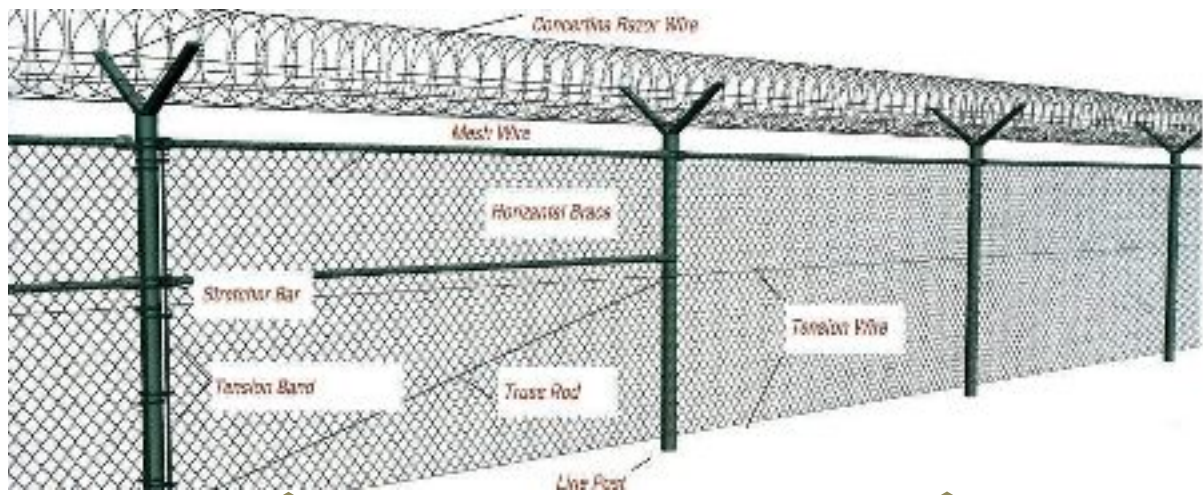


Product Name	Mesh Size	Wire Thickness	Roll Length	Coating
Galvanised Chainlink Mesh	25x25 mm	2,50 mm - 4,50 mm	10-15 m	Hot Dip Galvanised Coated (100-610 g/sqm zinc)
	30x30 mm			
	40x40 mm			
	50x50 mm			
	60x60 mm			
	70x70 mm			

Note: Available in different mesh size, height or length. 5% Production tolerance



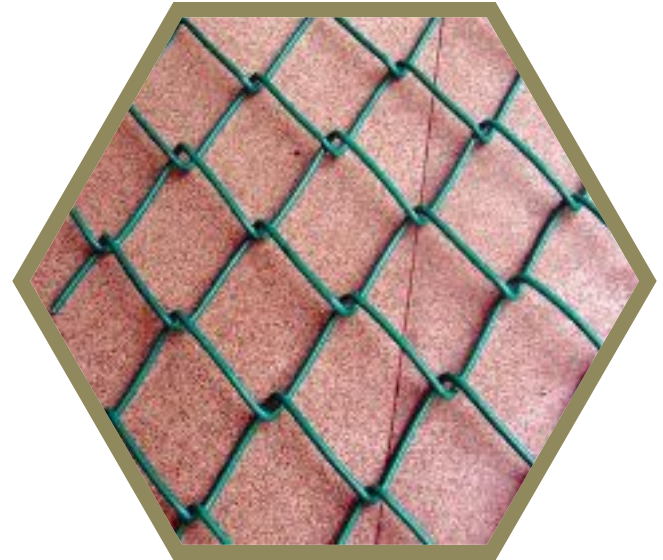
ASTM Standard Chain Link Fence



PVC Coated Chain Link Fence



<i>Product Name</i>	<i>Mesh Size</i>	<i>Wire Thickness</i>	<i>Roll Length</i>	<i>Coating</i>
<i>PVC Chainlink Mesh</i>	40x40 mm	3,00 mm - 4,88 mm	10-15 m	<i>Galvanised and PVC Coated</i>
	50x50 mm			
	60x60 mm			



Horizontal Brace Rail Detail

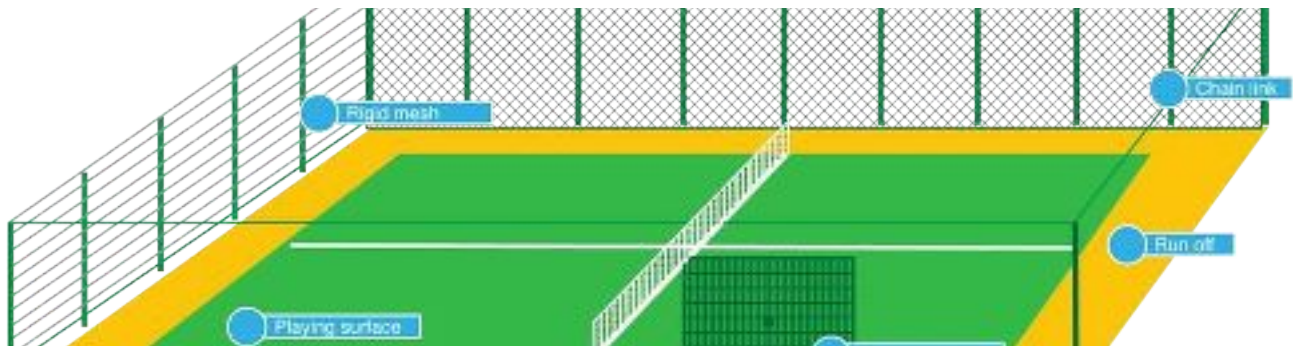


PVC Coated Chain Link Fence



Brace Detail

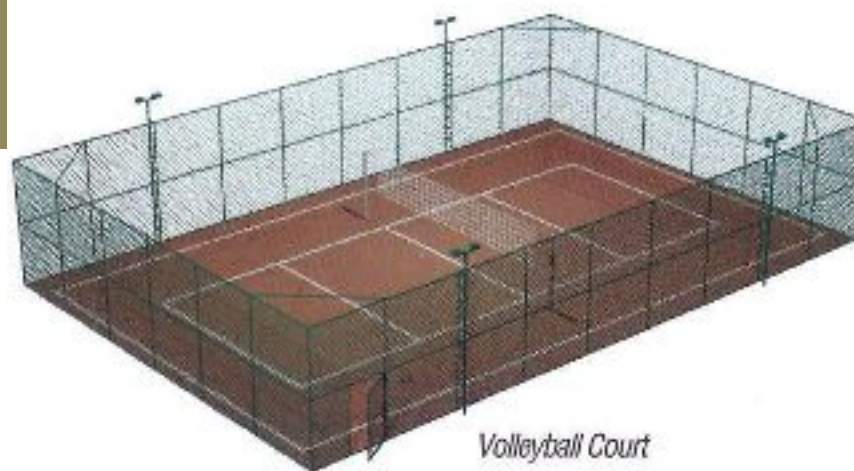
Sport Field Fence



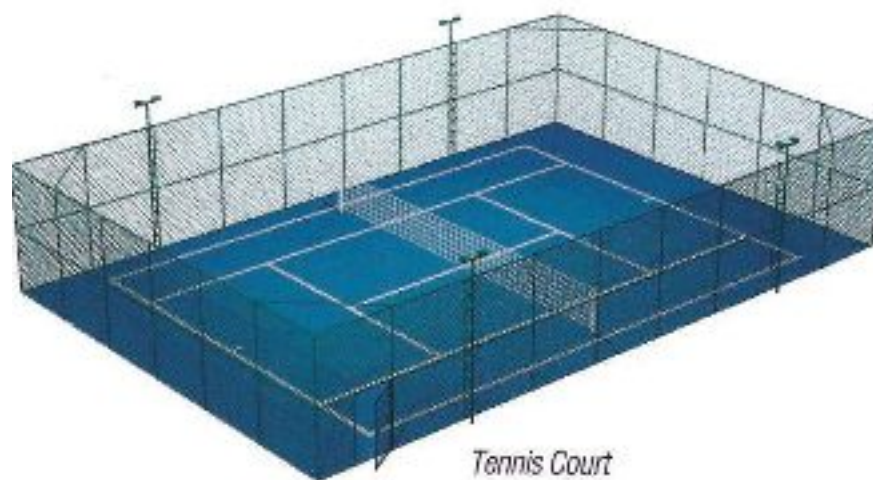
Sport Field Fence



Basketball Court

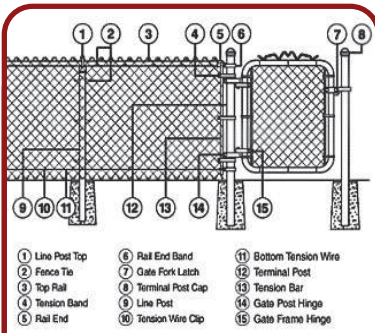


Volleyball Court



Tennis Court

FENCE Accessories



Part List



Tension Wire



Srirup Wire



Tie Wire



Pipes



Top Fence Sleeve



Extension Arm



Bolts & Nutt



OffSet Band



Round Band



Strecher Bar



Short Winder

FENCE Accessories



Truss Road



Trun Bucket 10mm



Eye Bolt / Nut



Post Cap



Line Post Eye Top



Gate Hardware Set



End Clamp



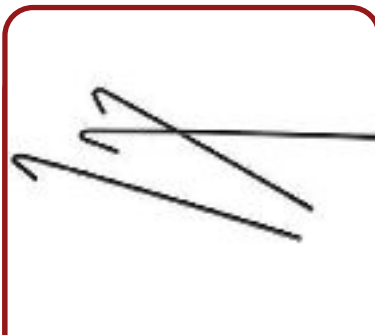
Line Rail/Bolivard Clump



Base Cup



Temporary
Fence Clalmp



Tie Wire



Chain Link Fabrics

PIPES - ASTM Standard



المواصفات الفنية للمواسير
الصلب السوداء و المجلفنه على الساخن المطابقه للنظام الأمريكى
(ASTMA53) درجه (A G) - جدول 40

TECHNICAL DATA OF BLACK AND HOT DIP GALVANIZED STEEL
PIPES CONFORMING TO

ASTM A 53 GRADE A & G SCH-40

NOMINAL PIPE SIZE		OUTSIDE DIAMETER		WALL THICKNESS		WEIGHT OF BLACK PIPES				TEST PRESSURE			
STANDARD		STANDARD		STANDARD		PLAIN END				GRADE A		GRADE B	
INCH	MM	INCH	MM	INCH	MM	KG/MTR	MRR/TON	LB/FT	FT/TON	PSI	KPA	PSI	KPA
1/2	15	0.840	21.3	0.109	2.77	1.27	787	0.85	2583	700	4800	700	4800
3/4	20	1.050	26.7	0.113	2.87	1.69	592	1.13	1941	700	4800	700	4800
1	25	1.315	33.4	0.133	3.38	2.50	400	1.68	1312	700	4800	700	4800
1.1/4	32	1.660	42.2	0.140	3.56	3.39	295	2.27	968	1200	8300	1300	9000
1.1/2	40	1.900	48.3	0.145	3.68	4.05	247	2.72	810	1200	8300	1300	9000
2	50	2.375	60.3	0.154	3.91	5.44	184	3.66	603	2300	15900	2500	17200
2.1/2	65	2.875	73.0	0.203	5.16	8.63	116	5.80	380	2500	17200	2500	17200
3	80	3.500	88.9	0.216	5.49	11.29	89	7.58	291	2220	15300	2500	17200
3.1/2	90	4.000	101.6	0.226	5.74	13.57	74	9.12	242	2030	14000	2370	16300
4	100	4.500	114.3	0.237	6.02	16.07	62	10.80	204	1900	13100	2210	15200
5	125	5.563	141.3	0.258	6.55	21.77	46	14.63	151	1670	11500	1950	13400
6	150	6.625	168.3	0.280	7.11	28.26	35	18.99	116	1520	10500	1780	12300
8	200	8.625	219.1	0.322	8.18	42.55	24	28.58	79	1340	9200	1570	10800

التركيب الكيمايى

CHEMICAL COMPOSITION (% MAS)

ELEMENT →	Carbon C	Manganese Mn	Phosphorus P	Sulphur S	Copper Cu	Nickel Ni	Chromium Cr	Molybdenum Mo	Vanadium V
GRADE-A	0.25	0.95	0.05	0.045	0.40	0.40	0.40	0.15	0.08
GRADE-B	0.30	1.20	0.05	0.045	0.40	0.40	0.40	0.15	0.08

المعالجة الحرارية

HEAT TREATMENT - Weld seam of the ERW pipe in GRade - B shall be heat treated after welding to a minimum temperature of 1000°F (540°C) so that no untempered martensite remains.

PIPES - BS Standard



المواصفات الفنية للمواسير السوداء و المجلفنه - من الصلب مطابقه للنظام الأوربي (10255.2004)

TECHNICAL DATA OF BLACK AND GALVANIZED STEEL PIPES CONFORMING TO EN 10255:2004

CLASS	SIZE		OUTSIDE DIAMETER				WALL THICKNESS		WEIGHT OF BLACK PIPES			WEIGHT OF GALVANIZED PIPES (CALCULATED)			NO OF PIPES PACKED PER STANDARD BUNDLE TONNE APPROX
			MAX		MIN				PLAIN ENDED			PLAIN ENDED			
	DN	Specified OD	Inch	mm	Inch	mm	Inch	mm	Kg/Mtr	mtr/ton	ft/ton	Kg/Mtr	mtr/ton	ft/ton	
TYPE L2	1/2	21.3	0.843	21.4	0.827	21.0	0.079	2.00	0.947	1056	3464	0.995	1005	3297	160
	3/4	26.9	1.059	26.9	1.039	26.4	0.091	2.30	1.380	725	2377	1.441	694	2277	110
	1	33.7	1.331	33.8	1.307	33.2	0.102	2.60	1.980	505	1657	2.058	486	1594	80
	1.1/4	42.4	1.673	42.5	1.650	41.9	0.102	2.60	2.540	394	1292	2.640	379	1243	61
	1.1/2	48.3	1.906	48.4	1.882	47.8	0.114	2.90	3.230	310	1016	3.344	299	981	51
	2	60.3	2.370	60.2	2.346	59.6	0.114	2.90	4.080	245	804	4.223	237	777	37
	2.1/2	76.1	2.992	76.0	2.961	75.2	0.126	3.20	5.710	175	575	5.892	170	557	27
	3	88.9	3.492	88.7	3.461	87.9	0.126	3.20	6.720	149	488	6.934	144	473	24
	4	114.3	4.484	113.9	4.449	113.0	0.142	3.60	9.750	103	336	10.026	100	327	16
MEDIUM SERIES	1/2	21.3	0.858	21.8	0.827	21.0	0.102	2.60	1.210	826	2711	1.257	796	2610	130
	3/4	26.9	1.075	27.3	1.043	26.5	0.102	2.60	1.560	641	2103	1.621	617	2024	100
	1	33.7	1.346	34.2	1.311	33.3	0.126	3.20	2.410	415	1361	2.487	402	1319	65
	1.1/4	42.4	1.689	42.9	1.654	42.0	0.126	3.20	3.100	323	1058	3.199	313	1026	51
	1.1/2	48.3	1.921	48.8	1.886	47.9	0.126	3.20	3.560	281	922	3.684	271	891	44
	2	60.3	2.394	60.8	2.350	59.7	0.142	3.60	5.030	199	652	5.172	193	634	30
	2.1/2	76.1	3.016	76.6	2.965	75.3	0.142	3.60	6.420	156	511	6.612	151	496	24
	3	88.9	3.524	89.5	3.465	88.0	0.157	4.00	8.360	120	392	8.583	117	382	19
	4	114.3	4.528	115.0	4.453	113.1	0.177	4.50	12.200	82	269	12.476	80	263	14
HEAVY SERIES	1/2	21.3	0.858	21.8	0.827	21.0	0.126	3.20	1.440	694	2278	1.486	673	2208	110
	3/4	26.9	1.075	27.3	1.043	26.5	0.126	3.20	1.870	535	1754	1.930	518	1700	80
	1	33.7	1.346	34.2	1.311	33.3	0.157	4.00	2.930	341	1120	3.015	332	1088	55
	1.1/4	42.4	1.689	42.9	1.654	42.0	0.157	4.00	3.790	264	866	3.897	257	842	44
	1.1/2	48.3	1.921	48.8	1.886	47.9	0.157	4.00	4.370	229	751	4.492	223	730	37
	2	60.3	2.394	60.8	2.350	59.7	0.177	4.50	6.190	162	530	6.330	158	518	27
	2.1/2	76.1	3.016	76.6	2.965	75.3	0.177	4.50	7.930	126	414	8.110	123	405	20
	3	88.9	3.524	89.5	3.465	88.0	0.197	5.00	10.300	97	319	10.510	95	312	16
	4	114.3	4.528	115.0	4.453	113.1	0.213	5.40	14.500	69	226	14.774	68	222	12
5	139.7	5.543	140.8	5.453	138.5	0.213	5.40	17.900	56	183	18.238	55	180	10	
6	165.1	6.555	166.5	6.453	163.9	0.213	5.40	21.300	47	154	21.702	46	151	7	

Concertina Wire (Coils)

Concertina wire is supplied typically in single coils or crossed spiral coils. We can produce razor type barbed wire in concertina coils or straight lines. Blade types and specifications vary according to the customers' requirements. Concertina wire (coil) is made by stainless steel sheets and galvanized high tensile claps. It has a beautiful crossing outlook and it is suitable for uses after extending, making an ideal security fencing with great anti-climb and anti-cutting property. Standard materials for razor type barbed wire are either galvanized or stainless steel.

سلك الكونسرتينا يورد في صورة لفات من سلك مفرد أو لفات حلزونية. نستطيع إنتاج السلك الشائك باربي ذو الشفرة في صورة لفات حلزونية أو خطوط مستقيمة وتختلف المواصفات طبقاً لطلبات ورغبه العميل.

ملفات الكونسرتينا تصنع من الواح الصلب الذي لا يصدئ أو الصلب المجلفن المتحمل للشد العالي والتميز بالشكل الجذاب و هو يعتبر مثالي للأسوار التي تتطلب حماية أمنية عالية نظراً لعدم قابليته للقطع أو التسلق. الخامات القياسية لنوع السلك الشائك ذو الشفرة إما من الصلب المجلفن أو الصلب الغير قابل للصدأ.



Specification Razor Blade Specification:

مواصفات الشفرة:

Reference Number	Blade Style	Thick ness	Wire Dia	Barb Length	Barb Width	Barb spacing
BTO-12		0.5 ±0.05	2.5 ±0.1	10 ±1	13 ±1	26±1
BTO-18		0.5 ±0.05	2.5 ±0.1	15 ±1	15 ±1	33±1
BTO-22		0.5 ±0.05	2.5 ±0.1	22 ±1	15 ±1	34±1
CBT-65		0.6 ±0.05	2.5 ±0.1	65 ±2	21 ±1	100±2

Barbed Tape Concertina (BTC); Barbed Tape Obstacle (BTO)
Standard materials are either galvanized or stainless steel.
Standard packages products are shown in the tables above,
special specifications available on request.

سلك الكونسرتينا الشائك؛ لفائف الحواجز الشائكة
الخدمات القياسية أما مجلفن أو صلب لا يصدأ
العبوات القياسية للمنتجات كما هو موضح بالجدول
توجد مواصفات خاصة حسب الطلب.

Barbed Tape Wire Specification:

Outside Diameter	No. of Loops	Standard Length per Coil	Type	Notes
450mm	33	8M	CBT-65	Single coil
500mm	41	10M	CBT-65	Single coil
700mm	41	10M	CBT-65	Single coil
960mm	53	13M	CBT-65	Single coil
500mm	102	16M	BTO-10.15.22	Cross type
600mm	86	14M	BTO-10.15.22	Cross type
700mm	72	12M	BTO-10.15.22	Cross type
800mm	64	10M	BTO-10.15.22	Cross type
960mm	52	9M	BTO-10.15.22	Cross type

Wire Mesh Partition System

Wire Mesh Partitions are perfect for most Tool Room, GSM Core Stock Rooms, Departmental Divisions and other restricted areas.

Security Cages Wire Mesh Partitions can also be custom made to order by our design engineers to fit any situation.

Wire Mesh Partitions non-bearing panels, Wire Mesh Partitions panels are interchangeable and can be rapidly adapted to any need. Our Wire Mesh Partitions allow for maximum air circulation. Diffuses lighting for better illumination and won't obstruct fire hose stream.

Wire Mesh Partitions are the ideal solution for any secure environment. Panels, doors, and service windows can be arranged in any combination. They are attractive, economical, quick to install, and permit expansion at any time.

Wire Mesh Partitions are easy to install. No fabrication is necessary. Simply bolt the Wire Mesh Partitions panels together and anchor to the floor.

We manufacture wire mesh partitions, wire mesh railing infill panels, wire mesh window guards and woven wire products.

Finish: Electro statically applied enamel paint (Standard Colors: Gray and Black) or hot dipped galvanized.

الفواصل الشبكية السلكية مناسبة جدا لمعظم مخازن العدد والمناطق الخاصة المقيدة و عمل التقسيمات والمخازن والحوجز الأمنية، ويمكننا تنفيذ المتطلبات الخاصة بالإتفاق مع مهندس التصميم بالشركة لوضع التصميم المناسب طبقا لرغبة العميل.

إن الإطارات الشبكية السلكية التي تستخدم في عمل الفواصل قابلة للتبادل ويمكن تشكيلها حسب الإحتياج وهي تسمح بأقصى دوران للهواء وتسمح بتوزيع الإضاءة وعدم إعاقة إطفاء النيران.

إن الإطارات الشبكية السلكية المستخدمة في عمل الفواصل هي الحل الأمثل لأي بيئه امنية. الإطارات والأبواب وشبابيك الخدمات ممكن ترتيبها في اوضاع مختلفة لكونها جذابه واقتصادية وسريعة وسهلة في التركيب وتسمح بالتوسعات في أى وقت ولا تحتاج تجهيزات صناعيه اخرى فقط يتم تركيب الإطارات مع بعضها بربط المسامير والتثبيت مع الأرض. نحن نقوم بتصنيع الإطارات الشبكية السلكية المستخدمة في الفواصل والأسوار الشبكية و نقوم بتصنيع دلائل الشبابيك السلكية ومنتجات السلك الجدول والمنسوج .

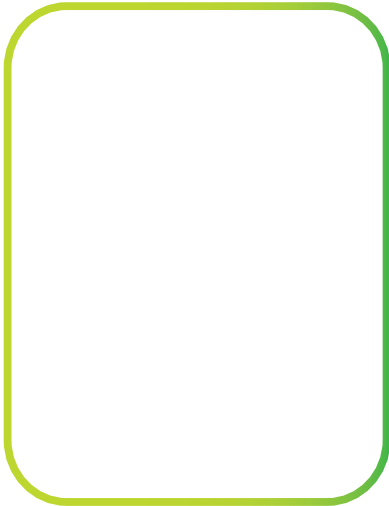
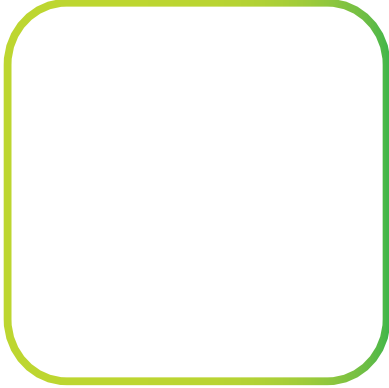
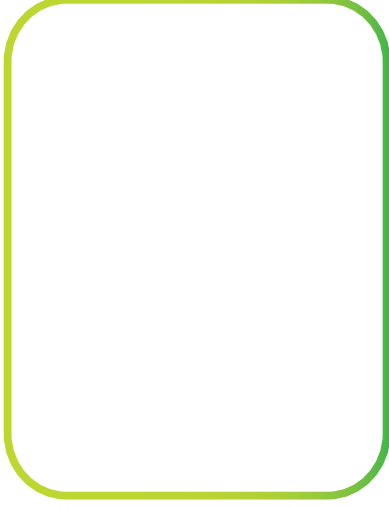
التشطيب : جلفنة على الساخن أو دهان أنامل كهرواستاتيكي (الألوان القياسية الرمادي والأسود)



RDS - MOBILY



NOUR Data Center



انظمة للتسوير
وفقا للمقاييس ومواصفات الأمريكية
بي أس / ساسو / آر آر - اف
FENCING SYSTEMS
Complying With ASTM / BS
AASHTO / SASO / RR-F Standards

2000-2400-TT (CLASS A,B&C)

- NOTES**
1. ALL TERMINAL MESH SIZE AND WIRE SIZE ARE AVAILABLE ON REQUEST.
 2. ALL RESPONSIBILITIES FOR CONCRETE FOUNDATION ARE WITH THE CONTRACTOR.
 3. INTERMEDIATE STRAINING POST TO BE PLACED AT INTERVAL CONFORMING TO THE SPECIFICATION OF THE CLIENT.

TECHNICAL SPECIFICATION

POSTS AND PILES

ALL FENCE POSTS AND PILES CONFORM WITH ASTM A-53 SCH 40, AND TO BE HOT-DIPPED GALVANIZED AFTER MANUFACTURE WITH AN AVERAGE ZINC COATING OF 550G/M² AND TO BE ACCORDANCE WITH ASTM A122 AND A153.

ITEM	POST LENGTH	POST WEIGHT IN KG	POST WEIGHT IN LB
LINE POST	60.3	3.91	8.60
CORNER END AND STRAINING POST	73.0	5.16	11.38
BRACE RAIL	42.2	3.56	7.85

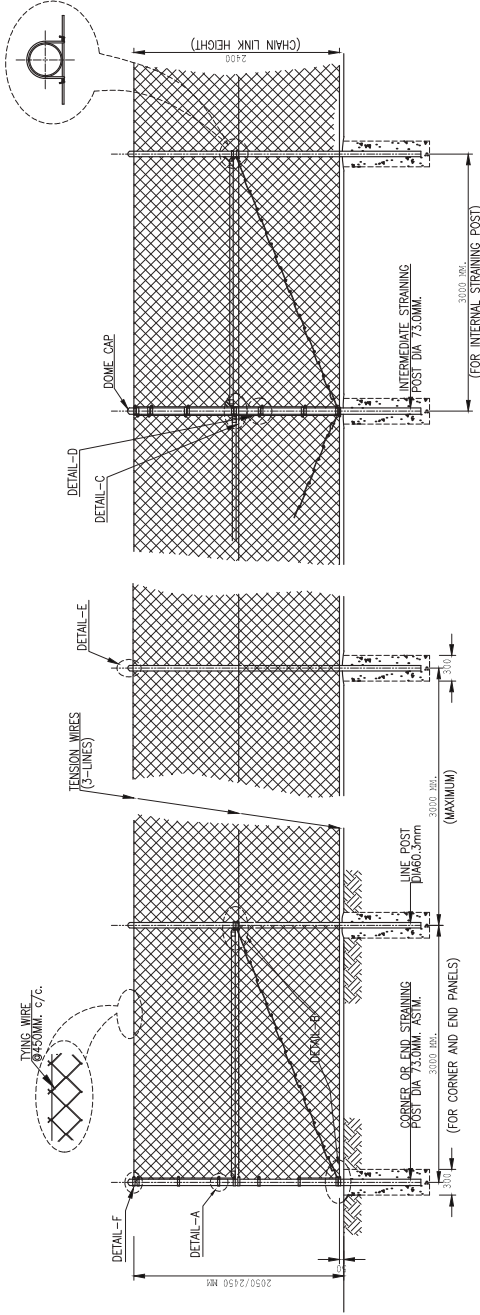
FINISHES

ALL STEEL MATERIALS TO BE HOT-DIPPED GALVANIZED AFTER MANUFACTURE WITH AN AVERAGE ZINC COATING OF 550G/M² AND TO BE ACCORDANCE WITH ASTM A122 AND A153.

WIRE SPECIFICATIONS

1. WIRE FOR CHAIN LINK FABRIC ARE GALVANIZED IN ACCORDANCE WITH ASTM A329 CLASS 1 (MINIMUM 366G/M²) OR F 668 (MINIMUM 92G/M²).

2. TENSION STRIP AND THE WIRE ARE GALVANIZED IN ACCORDANCE WITH ASTM A329 CLASS 1.

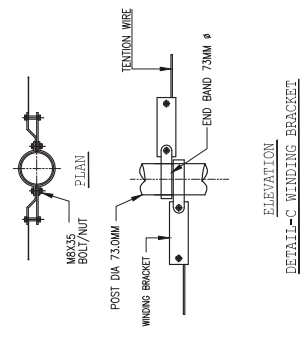


STRAINING PANEL

LINE POST

CORNER OR END PANEL

- FINISH**
- CLASS-A**
1. ALL STEEL MATERIAL OF GOOD COMMERCIAL QUALITY HOT-DIPPED GALVANIZED AFTER MANUFACTURE WITH AN AVERAGE ZINC COATING TO 550 GRM/M² OF SURFACE AREA. REF. TO ASTM A120A-123A-153
 2. CHAINLINK FABRIC, TENSION AND THE WIRE GALVANIZED AND PVC COATED, COLOUR DARK GREEN. REF TO ASTM D-792 AND D-2240, F-668
- CLASS-B**
1. ALL STEEL MATERIAL OF GOOD COMMERCIAL QUALITY HOT-DIPPED GALVANIZED AFTER MANUFACTURE WITH AN AVERAGE ZINC COATING TO 550 GRM/M² OF SURFACE AREA. REF. TO ASTM A120A-123A-153
 2. CHAINLINK FABRIC, TENSION AND THE WIRE SPECIAL GALVANIZED WITH A MIN. ZINC-COATING OF 366 GRM/M² OF SURFACE AREA. REF-ASTM A-329
- CLASS-C**
1. ALL STEEL MATERIAL OF GOOD COMMERCIAL QUALITY HOT-DIPPED GALVANIZED AFTER MANUFACTURE AND PLASTICIZED PVC COATED, COLOUR DARK GREEN. REF. ASTM D-792 & D-2240.
 2. CHAINLINK FABRIC, TENSION AND THE WIRE WITH GALVANIZED STEEL CORE & PVC COATING, COLOUR DARK GREEN. REF. TO ASTM D-792 & D-2240, F-668



CLASS	CHAIN LINK FABRIC MESH	TENSION WIRE DIA	TENSION WIRE	THICK WIRE	FINISHES WIRE
A	50	2.69/3.76	3.76/4.68	2.69/3.76	14/2.0
B	50	3.76	4.68	3.00	1.8
C	50	3.76/4.68	3.76/4.68	2.69/3.76	14/2.0

DATE	REV	DESCRIPTION
08/29/15	A	FIRST ISSUE
08/29/15	B	REVISIONS

MANUFACTURER:

hi-tech

FAX 291 4149, TEL 011-2088072, 6555015795
2ND INDUSTRIAL ZONE AL-KHARJ ROAD RIYADH
sales@hitech-ksa.com

FORM	SCALE	AS SHOWN
2000/2400-TT (CLASS AB&C)	SCALE	AS SHOWN
CHECKED:	DATE	08/29/15
APPROVED:	DRG. NO. :	GEN-HH-TECH-001
	REV :	A

2000-2400-TR(CLASS A,B & C)

NOTES

1. ALL TERMINAL MESH SIZE AND WIRE SIZE ARE AVAILABLE ON REQUEST.
2. ALL REQUIREMENTS FOR CONCRETE FOUNDATION ARE WITH THE CONTRACTOR.
3. INTERMEDIATE STRAINING POST TO BE PLACED AT INTERVAL CONFORMING TO THE SPECIFICATION OF THE CLIENT.

TECHNICAL SPECIFICATION

POSTS AND PILES
 ALL FENCE POSTS AND PILES CONFORMING WITH ASTM A-53 SH 40, AND TO BE HOT-DIPPED GALVANIZED AFTER MANUFACTURE WITH AN AVERAGE ZINC COATING OF 350 GR/M².

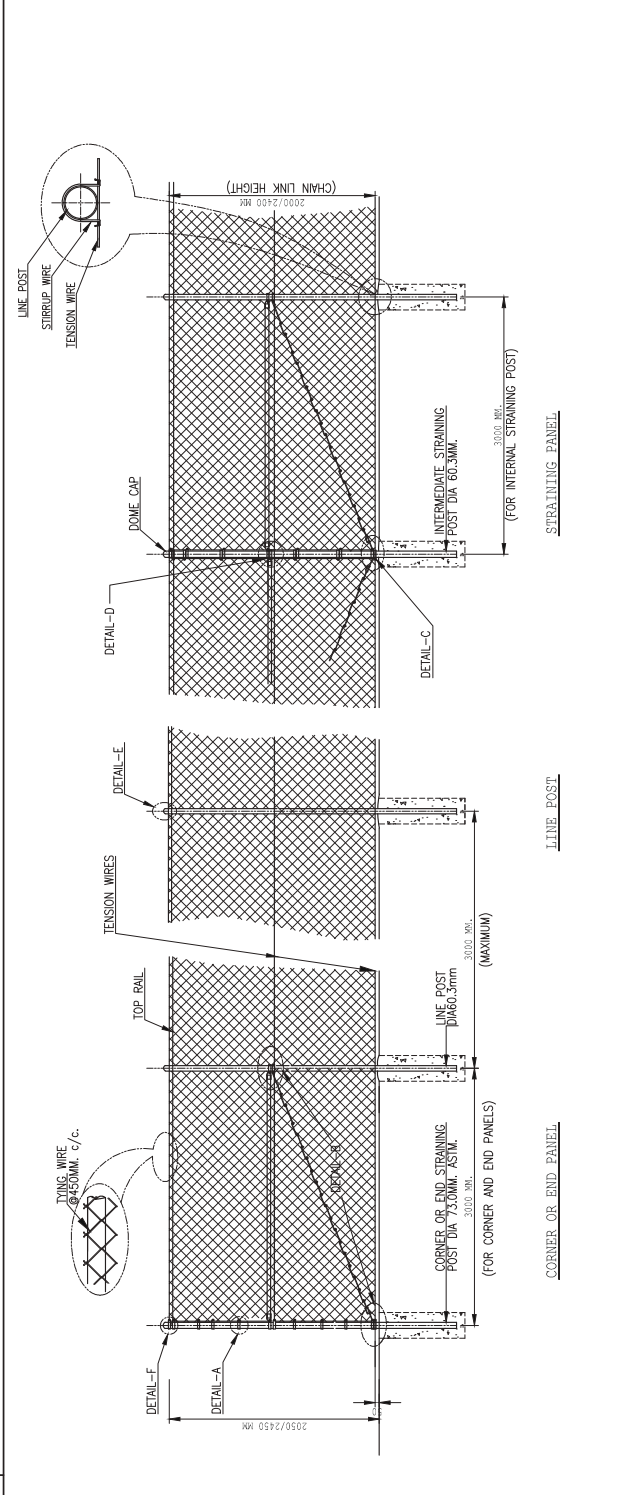
ITEM	POST LENGTH	POST OUTSIDE DIAMETER	POST WALL THICKNESS	WEIGHT PER M
LINE POST	60.3	60.3	3.91	5.44
CORNER END AND STRAINING POST	73.0	73.0	5.16	8.65
TOP RAIL	41.8	41.8	2.30	2.23
BRACE RAIL	41.8	41.8	2.30	2.23

FITTINGS
 ALL FENCE FITTINGS TO BE HOT-DIPPED GALVANIZED AFTER MANUFACTURE WITH AN AVERAGE ZINC COATING OF 350 GR/M² AND TO BE ACCORDANCE WITH ASTM A428 AND A433.

WIRE SPECIFICATIONS

1. WIRE FOR CHAIN LINK FABRIC ARE GALVANIZED IN ACCORDANCE WITH ASTM A302 CLASS 1 (MINIMUM 3665 GR/M²) OR F 668 (MINIMUM 925 GR/M²).
2. TENSION, STRIPUP AND THE WIRE ARE GALVANIZED ACCORDANCE WITH ASTM A441 CLASS 1.

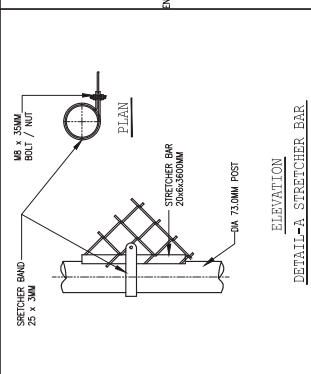
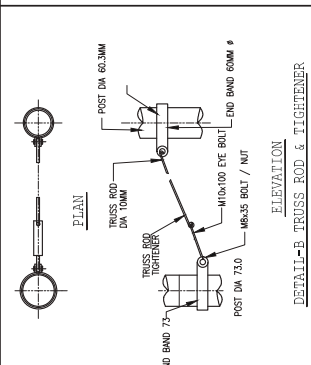
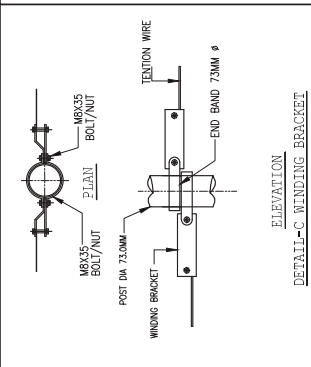
CLASS	CHAIN LINK FABRIC TENSION WIRE DIA	STRIPUP WIRE DIA	TENSION WIRE DIA	STRIPUP TENSILE STRENGTH	WIRE DIA	WIRE DIA	WIRE DIA	WIRE DIA
A	50	2.65/3.78	3.78/4.68	2.65/3.78	1.4/2.0	1.4/2.0	1.4/2.0	1.4/2.0
B	50	3.78	4.50	3.00	1.8	1.8	1.8	1.8
C	50	3.78/4.68	3.78/4.68	2.65/3.78	1.4/2.0	1.4/2.0	1.4/2.0	1.4/2.0



FINISH
CLASS-A
 1. ALL STEEL MATERIAL OF GOOD COMMERCIAL QUALITY HOT-DIPPED GALVANIZED AFTER MANUFACTURE WITH AN AVERAGE ZINC COATING FO 350 GR/M² OF SURFACE AREA. REF. TO ASTM A120A-123A-153 AND PVC COATED. COLOUR DARK GREEN. REF TO ASTM D-792 AND D-2240. F-668
 2. CHAINLINK FABRIC, TENSION AND THE WIRE GALVANIZED WITH A MIN. ZINC-COATING OF 366 GR/M² OF SURFACE AREA. REF.-ASTM A-392.

CLASS-B
 1. ALL STEEL MATERIAL OF GOOD COMMERCIAL QUALITY HOT-DIPPED GALVANIZED AFTER MANUFACTURE WITH AN AVERAGE ZINC COATING FO 550 GR/M² OF SURFACE AREA. REF. TO ASTM A120A-123A-153 OF SURFACE AREA. REF. TO ASTM A120A-123A-153
 2. CHAINLINK FABRIC, TENSION AND THE WIRE GALVANIZED WITH A MIN. ZINC-COATING OF 366 GR/M² OF SURFACE AREA. REF.-ASTM A-392.

CLASS-C
 1. ALL STEEL MATERIAL OF GOOD COMMERCIAL QUALITY HOT-DIPPED GALVANIZED AFTER MANUFACTURE WITH AN AVERAGE ZINC COATED. COLOUR DARK GREEN. REF. TO ASTM D-792 & D-2240.
 2. CHAINLINK FABRIC, TENSION AND THE WIRE WITH GALVANIZED STEEL CORE & PVC COATING. COLOUR DARK GREEN. REF. TO ASTM D-792 & D-2240. F-668



REVISIONS

NO.	DATE	DESCRIPTION
1	08/09/15	ISSUE

MANUFACTURER:
 HI-TECH
 FAX 2064145, TEL 011-2900075, 0666010796
 2ND INDUSTRIAL ZONE AL KHARJA, ROAD RIYADH
 sales@hitech-fence.com

DESIGN: MD/AMJZ
SCALE: AS SHOWN
DATE: 08/09/15
DRAWN:
CHECKED:
APPROVED: JWD
GEN-HITECH-002
REV: A

DESIGN: MD/AMJZ
SCALE: AS SHOWN
DATE: 08/09/15
DRAWN:
CHECKED:
APPROVED: JWD
GEN-HITECH-002
REV: A

2000-2400-B3TR(CLASS A,B& C)

NOTES

1. ALTERNATIVE MESH SIZES AND WIRE SIZES ARE AVAILABLE ON REQUEST.
2. ALL RESPONSIBILITIES FOR CONCRETE FOUNDATION ARE WITH THE CONTRACTOR.
3. INTERMEDIATE STRAINING POSTS TO BE PLACED AT 30M INTERVALS, CORRESPONDING TO THE SPECIFICATION OF THE CLIENT.

TECHNICAL SPECIFICATION

POSTS AND PIPES
ALL FENCE POSTS AND PIPES COMPLYING WITH ASTM A-53 SCH 40, AND TO BE HOT-DIPPED GALVANIZED AFTER MANUFACTURE WITH AN AVERAGE ZINC COATING OF 550GR/M².

ITEM	POST LENGTH	OUTSIDE DIA (MM)	WALL THICKNESS	WEIGHT Kg / M
LINE POST	603	73.0	3.91	54.4
INTERMEDIATE STRAINING POST	73.0	5.16	8.65	
BRACE RAIL	42.2	3.55	3.39	
TOP RAIL	42.2	3.55	3.39	

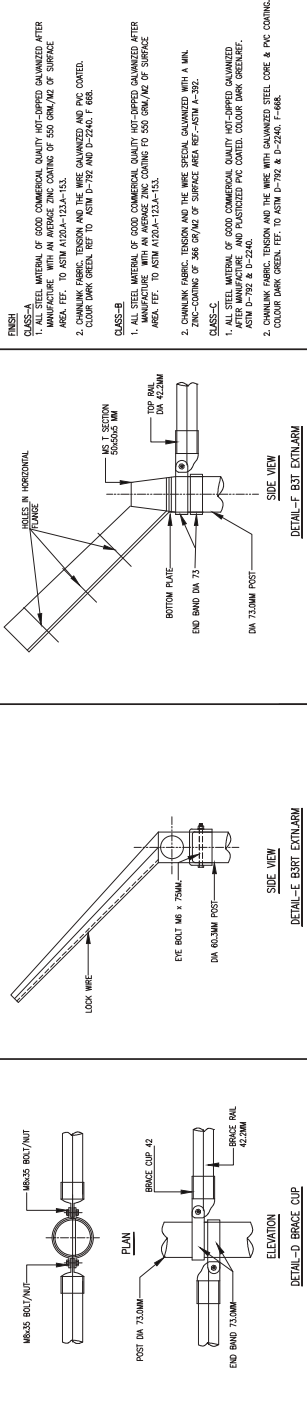
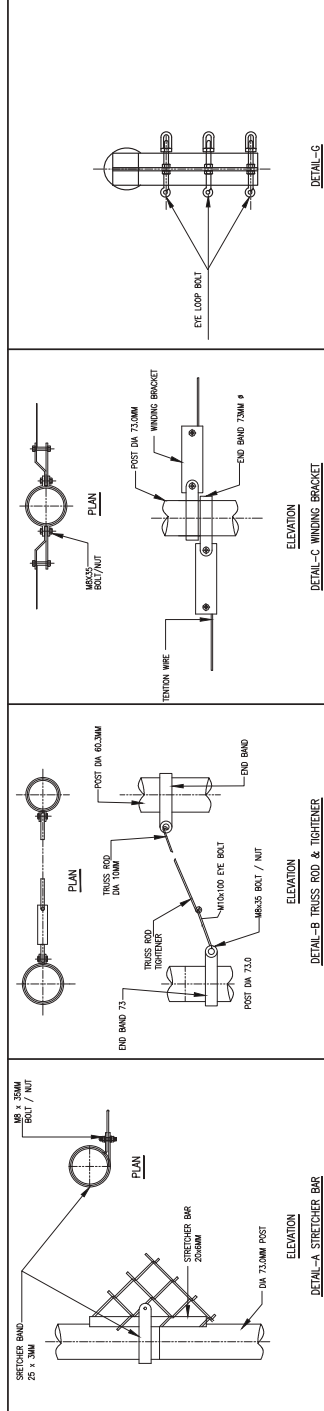
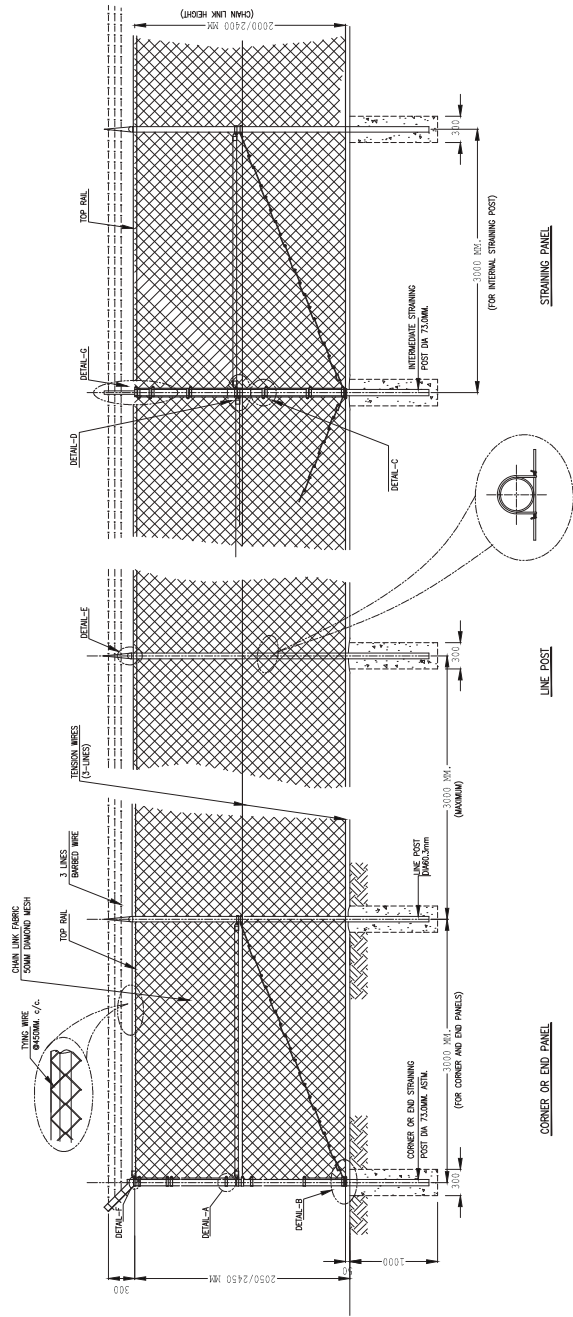
FITTINGS

ALL FENCE FITTINGS TO BE HOT-DIPPED GALVANIZED AFTER MANUFACTURE WITH AN AVERAGE ZINC COATING OF 550GR/M² AND TO BE ACCORDANCE WITH ASTM A123 AND A153.

WIRE PRODUCTS

1. WIRE FOR CHAIN LINK FABRIC ARE GALVANIZED IN ACCORDANCE WITH ASTM A392 CLASS 1 (MINIMUM 2665G/M²) OR F 668 (MINIMUM 255G/M²).
2. ASTM A123 & A153.

CLASS	CHAIN LINK FABRIC WIRE DIA	TENSION WIRE	STRETCHER WIRE	STRIP WIRE	TRUSS WIRE	BARBED WIRE
A	50	2.65/3.70	3.76/4.88	2.65/3.70	1.4/2.0	12 GAUGE
B	50	3.76	4.50	3.00	1.8	2 STRANDS
C	50	3.76/4.88	3.76/4.88	2.65/3.70	1.4/2.0	2 STRANDS BARGE AT THE SPACING



MANUFACTURER:

 FAX 20141419, TEL 01-2080072, 0555015785
 2ND INDUSTRIAL ZONE AL-KHARJ ROAD RIYADH
 info@hitech-hai.com

FENCE TYPE:
2000&2400-B3TR (CLASS-A,B&C)

REVISIONS:

NO.	DATE	BY
01	08/09/15	AS SHOWN

APPROVED: JGD
DATE: 08/09/15
GEN-IT-TECH-004
REV: A

2000-2400-B6 TR (CLASS-A,B & C)

NOTES

1. ALTERNATE MESH SIZES AND WIRE SIZES ARE AVAILABLE ON REQUEST.
2. ALL ENDS TO BE HOT-DIPPED GALVANIZED AFTER MANUFACTURE.
3. INTERMEDIATE STRAINING POSTS TO BE PLACED AT INTERVALS CORRESPONDING TO THE SPECIFICATIONS FOR THE CUBIC.

TECHNICAL SPECIFICATION

WIRE PROPERTIES

WIRE FOR CHAIN LINK FABRIC TO BE GALVANIZED WITH ASTM A302 CLASS 1 (MINIMUM 3669/102) OR F 668 (MINIMUM 925/102), TENSION STRIP AND THE WIRE ARE GALVANIZED ACCORDANCE WITH ASTM A122 AND A153.

ITEM	POST LENGTH	OUTSIDE DIA (MM)	WALL THICKNESS	WEIGHT Kg / M
LINE POST	60.3	3.91	0.31	5.44
CORNER END AND INTERMEDIATE STRAINING POST	73.0	5.16	0.65	8.65
BRACE BAR	42.2	3.56	0.39	3.39
TOP RAIL	42.2	3.56	0.39	3.39

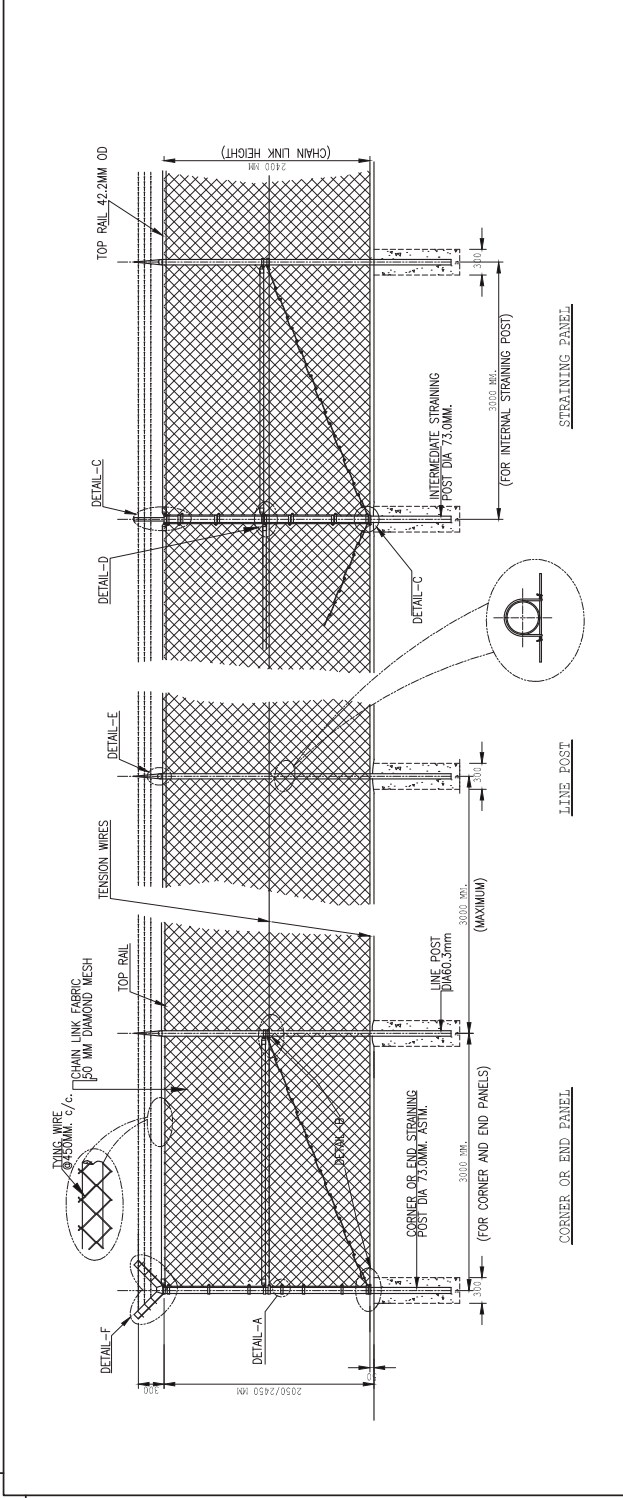
FINISH

ALL ENDS TO BE HOT-DIPPED GALVANIZED AFTER MANUFACTURE WITH AN AVERAGE ZINC COATING OF 500GM/M² AND TO BE ACCORDANCE WITH ASTM A122 AND A153.

WIRE PROPERTIES

WIRE FOR CHAIN LINK FABRIC TO BE GALVANIZED WITH ASTM A302 CLASS 1 (MINIMUM 3669/102) OR F 668 (MINIMUM 925/102), TENSION STRIP AND THE WIRE ARE GALVANIZED ACCORDANCE WITH ASTM A122 AND A153.

CLASS	CHAIN LINK FABRIC MESH	TENSION WIRE DIA	TENSION WIRE	THIN WIRE	THICK WIRE
A	50	2.69/3.76	2.69/3.76	1.4/2.0	1.2 GAUGE
B	50	3.76	4.65	3.00	1.8
C	50	3.76/4.68	3.76/4.68	2.65/3.71	1.4/2.0



FINISH

CLASS-A

1. ALL STEEL MATERIAL OF GOOD COMMERCIAL QUALITY HOT-DIPPED GALVANIZED AFTER MANUFACTURE WITH AN AVERAGE ZINC COATING TO 500 GRM/M² OF SURFACE AREA. REF. TO ASTM A122/A-153.

2. CHAIN LINK FABRIC, TENSION AND THE WIRE GALVANIZED AND PVC COATED. COLOURS DARK GREEN. REF TO ASTM D-792 AND D-2240. F 668

CLASS-B

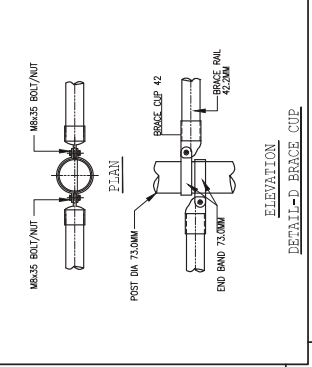
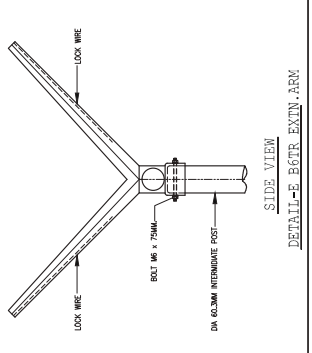
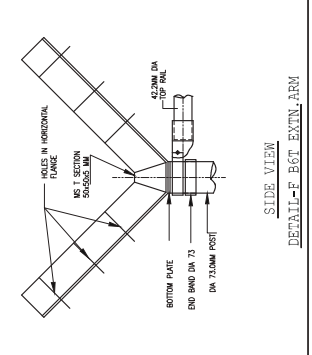
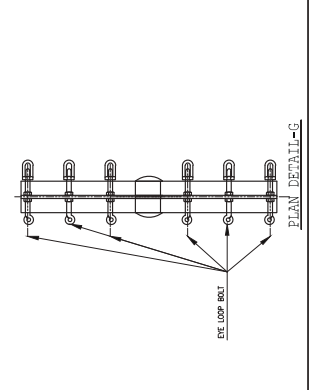
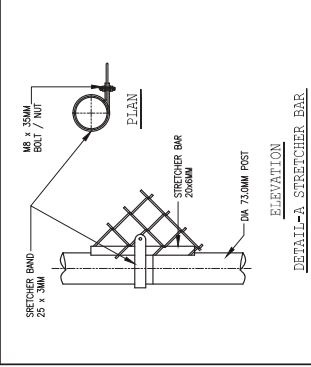
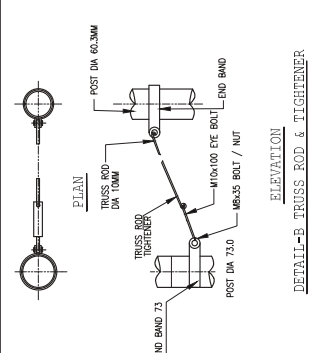
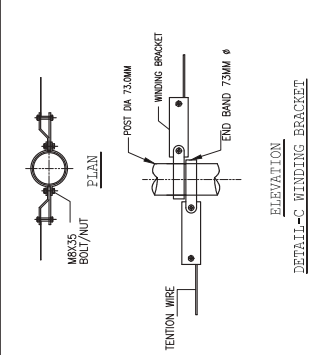
1. ALL STEEL MATERIAL OF GOOD COMMERCIAL QUALITY HOT-DIPPED GALVANIZED AFTER MANUFACTURE WITH AN AVERAGE ZINC COATING TO 500 GRM/M² OF SURFACE AREA. REF. TO ASTM A122/A-153.

2. CHAIN LINK FABRIC, TENSION AND THE WIRE SPECIAL GALVANIZED WITH AN AVERAGE ZINC COATING OF 366 GRM/M² OF SURFACE AREA. REF-ASTM A-302

CLASS-C

1. ALL STEEL MATERIAL OF GOOD COMMERCIAL QUALITY HOT-DIPPED GALVANIZED AFTER MANUFACTURE AND PLASTICIZED PVC COATED. COLOUR DARK GREEN. REF. TO ASTM D-792 & D-2240.

2. CHAIN LINK FABRIC, TENSION AND THE WIRE WITH GALVANIZED STEEL CORE & PVC COATING. COLOUR DARK GREEN. REF. TO ASTM D-792 & D-2240. F-668



REVISIONS

NO.	REV. NO.	DATE	BY
1	A	08/09/15	

MANUFACTURER:

Hi-Tech

PLANT NO: 14145, TEL: 011-2688979, 0655018705
 2ND INDUSTRIAL ZONE ALAKHARA, ROAD RYADH
 saif@hitech.com

DESIGN: M. KHAN **SCALE:** AS SHOWN

DRAWN: DATE: 08/09/15

CHECKED: DIR. NO :
APPROVED: JWD GEN-HI-TECH-005 **REV :** A

FENCE TYPE: 2000&2400-B6TR (CLASS-A,B&C)

2000-2400-BBTT (CLASS A,B & C)

NOTES

- ALTERNATIVE MESH SIZES AND WIRE SIZES ARE AVAILABLE ON REQUEST.
- ALL REINFORCERS FOR CONCRETE FOUNDATIONS ARE WITH THE CONTRACTOR.
- INTERMEDIATE STRAINING POSTS TO BE PLACED AT INTERVALS CONFORMING TO THE SPECIFICATION TO THE CLIENT.

TECHNICAL SPECIFICATION

POSTS AND PILES

ALL FENCE POSTS AND PILES CONFORMING WITH ASTM A-53 SCH 40, AND TO BE HOT-DIPPED GALVANIZED AFTER MANUFACTURE WITH AN AVERAGE ZINC COATING OF 500GR/M² AND TO BE ACCORDANCE WITH ASTM A129 AND A153.

ITEM	POST LENGTH	POST DIAMETER	POST WEIGHT PER METRE
LINE POST	60.3	3.91	5.44
CORNER END AND STRAINING POST	73.0	5.16	8.65
BRACE RAIL	42.2	3.56	3.39

FINISHES

ALL STEEL MATERIALS TO BE HOT-DIPPED GALVANIZED AFTER MANUFACTURE WITH AN AVERAGE ZINC COATING OF 500GR/M² AND TO BE ACCORDANCE WITH ASTM A129 AND A153.

WIRE SPECIFICATIONS

- WIRE FOR CHAIN LINK FABRIC ARE GALVANIZED IN ACCORDANCE WITH ASTM A329 CLASS 1 (MINIMUM 366G/MT) OR F 668 (MINIMUM 92G/MT).
- TENSION, STIRRUP AND THE WIRE ARE GALVANIZED ACCORDANCE WITH ASTM A329.

REVISIONS

NO.	DATE	DESCRIPTION
1	08/09/15	AS SHOWN

MANUFACTURER:

hi-tech
FAX 0514111111 TEL 011-266472 0558161795
2ND INDUSTRIAL ZONE, AL-HADAD ROAD HIT/HA
sales@hitech-hi.com

NOTES

- ALL STEEL MATERIAL OF GOOD COMMERCIAL QUALITY HOT-DIPPED GALVANIZED AFTER MANUFACTURE WITH AN AVERAGE ZINC COATING OF 500 GR/M² OF SURFACE AREA. FEET. TO ASTM A120A-123A-153.
- CHAIN LINK FABRIC, TENSION AND THE WIRE GALVANIZED AND PIC COATED. COLOUR DARK GREEN. REF TO ASTM D-792 AND D-2240. F-668

FINISHES

CLASS-A:
1. ALL STEEL MATERIAL OF GOOD COMMERCIAL QUALITY HOT-DIPPED GALVANIZED AFTER MANUFACTURE WITH AN AVERAGE ZINC COATING TO 500 GR/M² OF SURFACE AREA. FEET. TO ASTM A120A-123A-153.

CLASS-B:
1. ALL STEEL MATERIAL OF GOOD COMMERCIAL QUALITY HOT-DIPPED GALVANIZED AFTER MANUFACTURE WITH AN AVERAGE ZINC COATING TO 500 GR/M² OF SURFACE AREA. FEET. TO ASTM A120A-123A-153.

CLASS-C:
1. ALL STEEL MATERIAL OF GOOD COMMERCIAL QUALITY HOT-DIPPED GALVANIZED AFTER MANUFACTURE AND PLASTICIZED PIC COATED. COLOUR DARK GREEN. REF. ASTM D-792 & D-2240. F-668. TENSION AND THE WIRE GALVANIZED STEEL COSE & PIC COATING. COLOUR DARK GREEN. FEET. TO ASTM D-792 & D-2240. F-668

DETAILS

DETAIL-A (FOR CORNER AND END PANELS)

DETAIL-B TRUSS ROD & TIGHTENER

DETAIL-C WINDING BRACKET

DETAIL-D BRACE CUP

DETAIL-E BBTT EXTIN. ARM

DETAIL-F (FOR INTERNAL STRAINING POST)

DETAILS

DETAIL-A (FOR CORNER AND END PANELS)

DETAIL-B TRUSS ROD & TIGHTENER

DETAIL-C WINDING BRACKET

DETAIL-D BRACE CUP

DETAIL-E BBTT EXTIN. ARM

DETAIL-F (FOR INTERNAL STRAINING POST)

DETAILS

DETAIL-A (FOR CORNER AND END PANELS)

DETAIL-B TRUSS ROD & TIGHTENER

DETAIL-C WINDING BRACKET

DETAIL-D BRACE CUP

DETAIL-E BBTT EXTIN. ARM

DETAIL-F (FOR INTERNAL STRAINING POST)

انظمة للتسوير
وفقا للمقاييس والمواصفات
البريطانية

FENCING SYSTEMS
Complying With
B.S Standards

2000-2400-TT (CLASS-DA,DB&DC)-Model

NOTES

1. ALTERNATE MESH SIZES AND WIRE SIZES ARE AVAILABLE ON REQUEST.
2. ALL RESPONSIBILITIES FOR CONCRETE FOUNDATIONS ARE WITH THE CONTRACTOR.
3. INTERMEDIATE STRAINING POSTS TO BE PLACED AT INTERVALS CORRESPONDING TO THE SPECIFICATIONS TO THE CLIENT.

TECHNICAL SPECIFICATION

POSTS AND FABRIC
 1. ALL POSTS AND FABRIC TO BE HOT-DIPPED GALVANIZED IN ACCORDANCE WITH BS443 AND COATING BS4102 GRADE A.

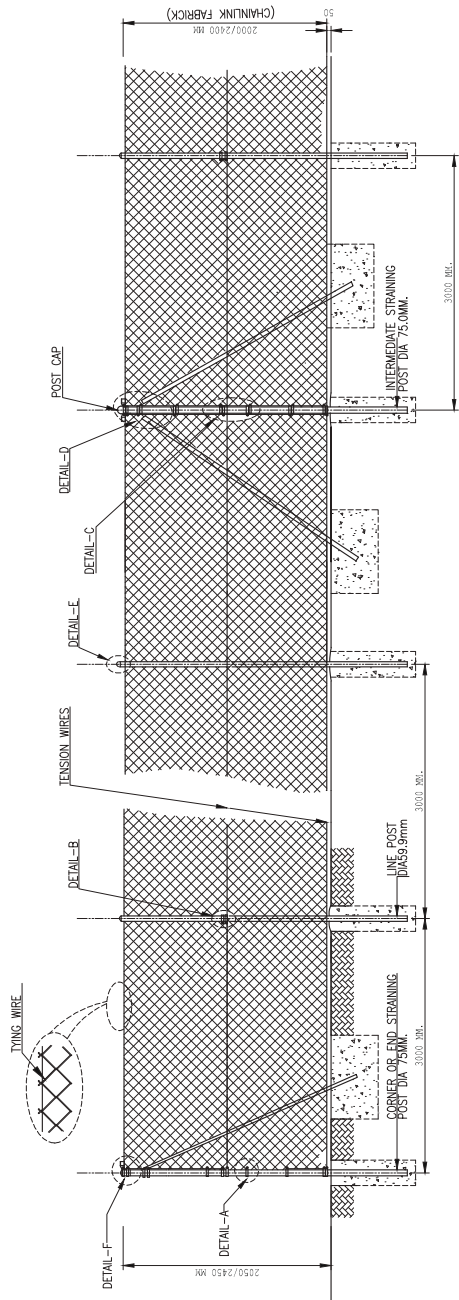
ITEM	POST LENGTH	OUTSIDE DIA. (MM)	WALL THICKNESS	WEIGHT Kg / M
LINE POST	2957	200	2.00	3.60
CORNER OR END STRAINING POST	751	200	2.00	5.14
BRACE STRETCHER	428	200	2.20	2.23

FABRIC
 1. FABRIC TO BE HOT-DIPPED GALVANIZED AFTER MANUFACTURE IN ACCORDANCE WITH BS 729.

WIRE SPECIFICATIONS

1. WIRE FOR CHAINLINK FABRIC GALVANIZED IN ACCORDANCE WITH BS443 AND COATING BS4102 GRADE A.
2. TENSION, STRIPUP AND THE WIRE ARE GALVANIZED ACCORDANCE WITH BS 729.

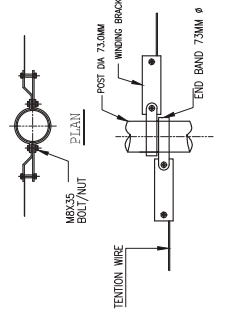
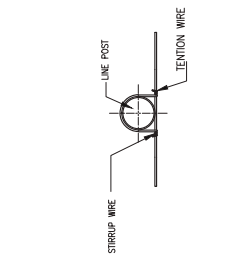
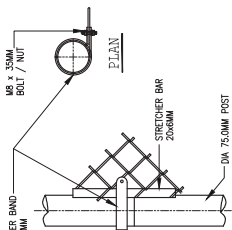
CLASS	CHAIN LINK FABRIC MESH	TENSION WIRE DIA.	STRIPUP WIRE DIA.	FINISH WIRE	BASED WIRE
DA	50	2.5/2.55	3.05/4.25	1.4/2.0	NOT APPLICABLE
DB	50	3.0	3.70	2.5	1.8
DC	50	3.65/4.25	3.70/4.98	3.5/4.75	1.4/2.0



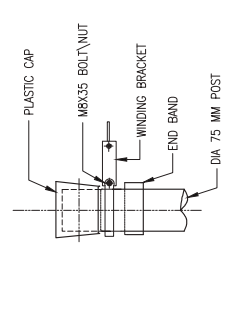
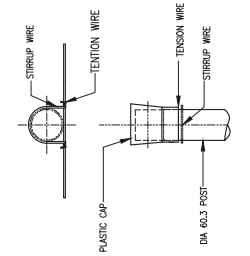
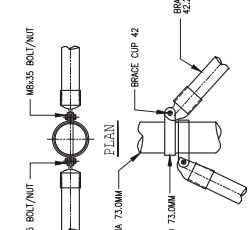
CORNER OR END PANEL

LINE POST

STRAINING PANEL



FINISH
CLASS-DA
 1. ALL STEEL MATERIAL OF GOOD COMMERCIAL QUALITY HOT-DIPPED GALVANIZED AFTER MANUFACTURE WITH AN AVERAGE ZINC COATING TO 550 GM/AZ OF SURFACE AREA.
 2. CHAINLINK FABRIC AND TENSION WIRE GALVANIZED STEEL COSE AND FACTORIZED POLYUNNY CHLORIDE COATING COLOR DARK GREEN.
CLASS-DB
 1. ALL STEEL MATERIAL OF GOOD COMMERCIAL QUALITY HOT-DIPPED GALVANIZED AFTER MANUFACTURE WITH AN AVERAGE ZINC COATING TO 550 GM/AZ OF SURFACE AREA.
 2. CHAINLINK FABRIC AND TENSION WIRE SPECIAL GALVANIZED OF MIN. ZINC-COATING OF 70-90 GM/AZ.
CLASS-DC
 1. ALL STEEL MATERIAL OF GOOD COMMERCIAL QUALITY HOT-DIPPED GALVANIZED AFTER MANUFACTURE WITH AN AVERAGE ZINC COATING TO 550 GM/AZ OF SURFACE AREA.
 2. CHAINLINK FABRIC AND TENSION WIRE SPECIAL GALVANIZED OF MIN. ZINC-COATING OF 70-90 GM/AZ.



08/09/15 A FIRST ISSUE
 DATE REV NO. REVISIONS BY

MANUFACTURER:

FAX 2814419, TEL 011-2680072, 0555015795
 2ND INDUSTRIAL ZONE AL-HARJU ROAD RIYADH
 sales@hi-tech.com

FENCE TYPE:
 2000&2400-BBIT (CLASS-A,B&C)

DESIGN: int SCALE: AS SHOWN
 DRAWN: MOZ DATE: 08/09/15
 CHECKED: JMD DRG. NO.:
 APPROVED: -ND GEN-TECH-007 REV: A

2000-2400-TR (CLASS-DA,DB&DC)-Model

NOTES

- NOTES**
1. ALTERNATE MESH SIZES AND WIRE SIZES ARE AVAILABLE ON REQUEST.
 2. ALL RESPONSIBILITIES FOR CONCRETE FOUNDATIONS ARE WITH THE CONTRACTOR.
 3. INTERMEDIATE STRAINING POSTS TO BE PLACED AT INTERVALS CONTAINING TO THE SPECIFICATIONS TO THE CLIENT.

TECHNICAL SPECIFICATION

FINISHES AND COATINGS

ALL FENCE POSTS AND PIPES COMPLYING WITH BS1387-47 CLASS A-1 AND TO BE HOT-DIPPED GALVANIZED AFTER MANUFACTURE WITH AN AVERAGE ZINC COATING OF 550 GRM/M² IN ACCORDANCE WITH BS 729

ITEM	POST LENGTH	OUTSIDE DIA	WALL THICKNESS	WEIGHT PER M
LINE POST	5.8	2.63	2.63	3.45
CORNER END AND STRAINING POST	75.1	2.80	2.80	5.14
BRACE RAIL	41.8	2.30	2.30	2.23
TOP RAIL	41.8	2.30	2.30	2.23

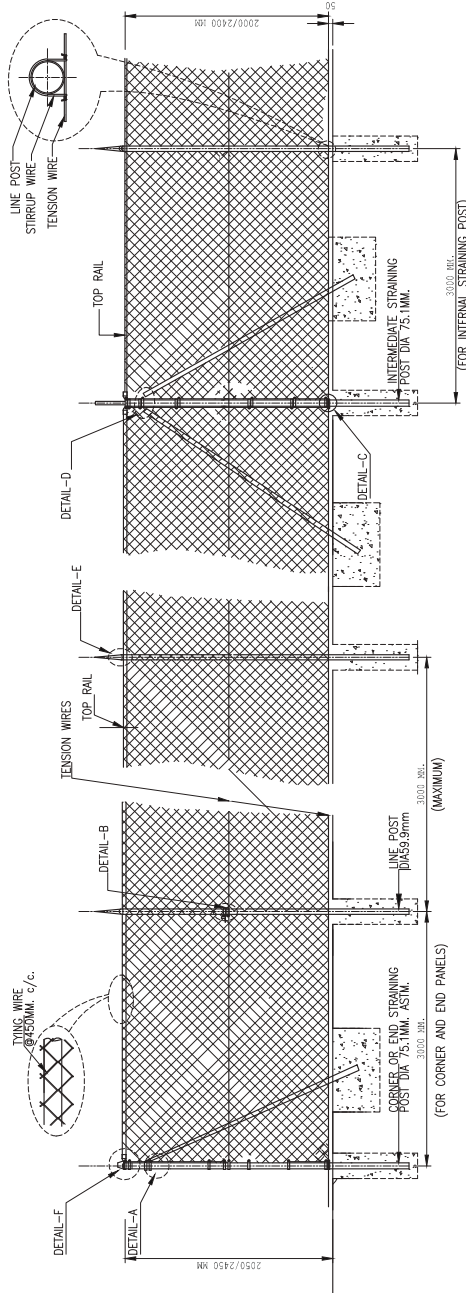
FINISHES

ALL FENCE FINISHES TO BE HOT-DIPPED GALVANIZED AFTER MANUFACTURE IN ACCORDANCE WITH BS 729

WIRE PROFILES

1. WIRE FOR CHAIN LINK FABRIC ARE GALVANIZED IN ACCORDANCE WITH BS443 AND COMPLYING BS 4100 GRADE A
2. CHAINLINK STRIP AND THE WIRE ARE GALVANIZED ACCORDANCE WITH BS 443

CLASS	CHAIN LINK FABRIC MESH	CHAIN LINK FABRIC WIRE DIA	STRIP WIRE DIA	STRIP WIRE WIRE DIA	STRIP WIRE WIRE DIA	STRIP WIRE WIRE DIA
DA	50	2.57/2.55	3.78/4.88	2.57/2.55	1.47/2.0	NOT APPLICABLE
DB	50	3.0	3.78	2.5	1.8	NOT APPLICABLE
DC	50	3.65/4.25	3.78/4.88	3.5/4.25	1.47/2.0	NOT APPLICABLE



STRAINING PANEL

LINE POST

CORNER OR END PANEL

FINISH

CLASS-DA

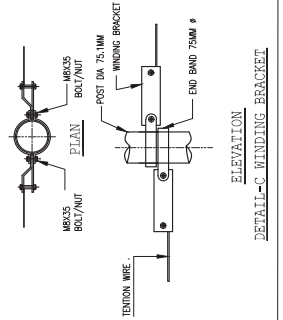
1. ALL STEEL MATERIAL OF GOOD COMMERCIAL QUALITY HOT-DIPPED GALVANIZED AFTER MANUFACTURE WITH AN AVERAGE ZINC COATING TO 550 GRM/M² OF SURFACE AREA. REF BS 729
2. CHAINLINK FABRIC, TENSION AND THE WIRE GALVANIZED CORE AND PLASTICIZED POLYVINYL CHLORIDE COATING COLOUR DARK GREEN

CLASS-DB

1. ALL STEEL MATERIAL OF GOOD COMMERCIAL QUALITY HOT-DIPPED GALVANIZED AFTER MANUFACTURE WITH AN AVERAGE ZINC COATING TO 550 GRM/M² OF SURFACE AREA. REF BS 729
2. CHAINLINK FABRIC, TENSION AND THE WIRE GALVANIZED CORE AND PLASTICIZED POLYVINYL CHLORIDE COATING COLOUR DARK GREEN

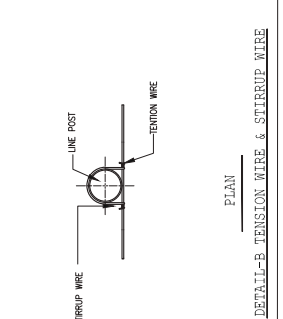
CLASS-DC

1. ALL STEEL MATERIAL OF GOOD COMMERCIAL QUALITY HOT-DIPPED GALVANIZED AFTER MANUFACTURE AND PLASTICIZED PVC COATED. COLOUR DARK GREEN.
2. CHAINLINK FABRIC, TENSION AND THE WIRE GALVANIZED CORE AND PLASTICIZED POLYVINYL CHLORIDE COATING COLOUR DARK GREEN



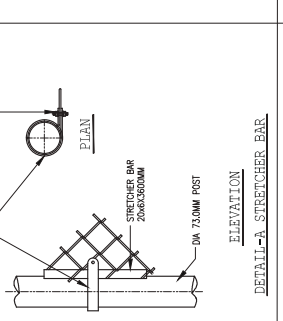
ELEVATION

DETAIL-C WINDING BRACKET



PLAN

DETAIL-B TENSION WIRE & STRIP WIRE

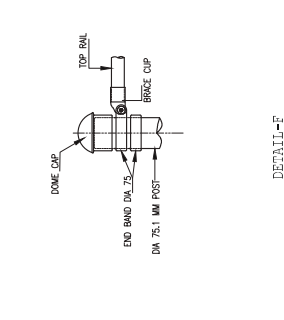


ELEVATION

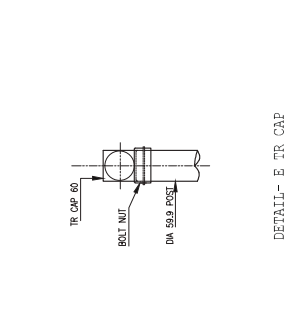
DETAIL-D STRETCHER BAR



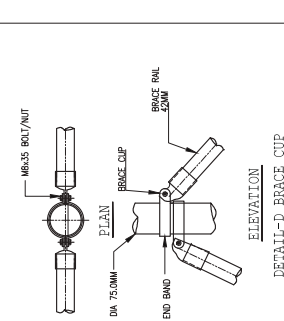
DETAIL-E TR CAP



DETAIL-F



DETAIL-D BRACE RAIL



DETAIL-D BRACE CUP



DETAIL-E TR CAP



DETAIL-E TR CAP

MANUFACTURER:

Hi-Tech

BOX NO 14410, TEL 011-2608072, 056304758
2ND INDUSTRIAL ZONE AL-KHARABI ROAD RYADH
sales@hi-tech-hsa.com

DATE	REV. NO.	FIRST ISSUE	BY
08/09/15	A	REVISIONS	

FENCE TYPE
2000&2400-TR (CLASS-DA,DB&DC)

DESIGN: int SCALE: AS SHOWN

DRAWN: MOZ DATE: 08/09/15

CHECKED: JMD

APPROVED: JMD

DWG. NO.: CEN-TECH-08

REV.: A

2000-2400-B3TT (CLASS DA&DB,DC)

NOTES

- ALTERNATIVE MESH SIZES AND WIRE SIZES ARE AVAILABLE ON REQUEST.
- ALL RESPONSIBILITIES FOR CONCRETE FOUNDATIONS ARE WITH THE CONTRACTOR.
- INTERMEDIATE STRAINING POSTS TO BE PLACED AT INTERVALS CONFORMING TO THE SPECIFICATIONS TO THE CLIENT.

TECHNICAL SPECIFICATION

WIRE AND FABRIC

ALL FENCE POSTS AND PILES COMPLYING WITH BS1307-47 CLASS WITH AN AVERAGE ZINC COATING OF 400 G/M² IN ACCORDANCE WITH BS729

ITEM	POST LENGTH	OUTSIDE DIA (MM)	WALL THICKNESS	WEIGHT Kg / M
LINE POST	2400	76.1	2.80	3.60
CORNER, END AND STRAINING POST	2400	76.1	2.80	5.14
BRACE PILE	42	42	2.30	2.23

DETAILS

ALL FENCE FITTINGS TO BE HOT-DIPPED GALVANIZED AFTER MANUFACTURE IN ACCORDANCE WITH BS 729

WIRE PRODUCTS

- WIRE FOR CHAIN LINK FABRIC ARE GALVANIZED IN ACCORDANCE WITH BS443
- CHAIN LINK FABRIC, TENSION AND THE WIRE WITH GALVANIZED CORE AND PLASTICIZED POLYNYL CHLORIDE COATING COLOR DARK GREEN
- TENSION STRIP AND THE WIRE ARE GALVANIZED ACCORDANCE WITH BS 443

CLASS	CHAIN LINK FABRIC MESH	TENSION WIRE DIA	STRIP WIRE DIA	TUNG WIRE DIA	BARBED WIRE
DA	50	3.0	3.76	2.5	1.8
DB	50	3.0	3.76	2.5	1.8
DC	50	3.0	3.76	2.5	1.8

10 GAUGE
2 STRAINING
POSTS
POSTING
SPACING

NOTES

- ALL STEEL MATERIAL OF GOOD COMMERCIAL QUALITY HOT-DIPPED GALVANIZED AFTER MANUFACTURE
- CHAIN LINK FABRIC, TENSION AND THE WIRE WITH GALVANIZED CORE AND PLASTICIZED POLYNYL CHLORIDE COATING COLOR DARK GREEN
- ALL STEEL MATERIAL OF GOOD COMMERCIAL QUALITY HOT-DIPPED GALVANIZED AFTER MANUFACTURE WITH AN AVERAGE ZINC COATING TO 550 GRM/AZ OF SURFACE AREA.
- CHAIN LINK FABRIC, TENSION WIRE ARE COMMERCIAL GALVANIZED
- ALL STEEL MATERIAL OF GOOD COMMERCIAL QUALITY HOT-DIPPED GALVANIZED AFTER MANUFACTURE AND PLASTICIZED PVC COATED, COLOR DARK GREEN.
- CHAIN LINK FABRIC, TENSION AND THE WIRE GALVANIZED CORE AND PLASTICIZED POLYNYL CHLORIDE COATING COLOR DARK GREEN

08/09/15 A

DATE

REV NO.

REVISIONS

BY

MANUFACTURER:

Hi-Tech

FAX 2014418 TEL 011-2080072 0355016795

2ND INDUSTRIAL ZONE AL-KHAFI ROAD RY/ADH

sales@hitech-fence.com

FENCE TYPE:

2000&2400-B3TT (CLASS-DA,DB,DC)

DESIGN: int SCALE: AS SHOWN

DRAWN: MOZ DATE: 08/09/15

CHECKED: JMD

APPROVED: JMD GEN-TECH-009 REV: A

FOR CORNER AND END PANELS

LINE POST DIA 60.3mmBSC (MAXIMUM)

INTERMEDIATE STRAINING POST DIA 75.0MM

3 LINE BARBED WIRE

(CHAIN LINK FABRIC)

FOR INTERNAL STRAINING POST

INTERMEDIATE STRAINING POST DIA 75.0MM

CORNER OR END PANEL

STRETCHED BAND 25 x 3MM

M8 x 75MM BOLT / NUT

STRETCHING BAR 20x20MM

DIA 75.0MM POST

PLAN

ELEVATION

DETAIL-A STRETCHER BAR

DETAIL-B TENSION WIRE & STRIP WIRE

DETAIL-C WINDING BRACKET

DETAIL-D TENSION WIRE & STRIP WIRE

DETAIL-E B3TT EXT'N ARM

DETAIL-F B3TT EXT'N ARM

LINE POST

M8 x 75MM BOLT / NUT

PLAN

WINDING BRACKET

POST DIA 75.0MM

END BAND 75MM

ELEVATION

DETAIL-C WINDING BRACKET

DETAIL-E B3TT EXT'N ARM

DETAIL-F B3TT EXT'N ARM

FOR CORNER AND END PANELS

STRETCHED BAND 25 x 3MM

M8 x 75MM BOLT / NUT

STRETCHING BAR 20x20MM

DIA 75.0MM POST

PLAN

ELEVATION

DETAIL-A STRETCHER BAR

DETAIL-B TENSION WIRE & STRIP WIRE

DETAIL-C WINDING BRACKET

DETAIL-D TENSION WIRE & STRIP WIRE

DETAIL-E B3TT EXT'N ARM

DETAIL-F B3TT EXT'N ARM

LINE POST

M8 x 75MM BOLT / NUT

PLAN

WINDING BRACKET

POST DIA 75.0MM

END BAND 75MM

ELEVATION

DETAIL-C WINDING BRACKET

DETAIL-E B3TT EXT'N ARM

DETAIL-F B3TT EXT'N ARM

2000-2400-B3TR (CLASS DA&DB,DC)

NOTES

- ALTERNATE MESH SIZES AND WIRE SIZES ARE AVAILABLE ON REQUEST.
- ALL RESPONSIBILITIES FOR CONCRETE FOUNDATIONS ARE WITH THE CONTRACTOR.
- INTERMEDIATE STRAINING POSTS TO BE PLACED AT INTERVALS CONTAINING TO THE SPECIFICATIONS TO THE CLIENT.

TECHNICAL SPECIFICATION

WIRE FABRIC:
 ALL FENCE POSTS AND PILES COMPLYING WITH BS1367-PT CLASS A-1 AND TO BE HOT-DIPPED GALVANIZED AFTER MANUFACTURING WITH AN AVERAGE ZINC COATING OF 450 G/TON IN ACCORDANCE WITH BS729

ITEM	POST LENGTH	OUTSIDE DIA. (MM)	WALL THICKNESS	WEIGHT Kg / M
LINE POST	2917	2.60	2.60	3.60
CORNER OR END STRAINING POST	751	2.60	5.14	5.14
BRACE RAIL	42	2.30	2.23	2.23
TOP RAIL	42	2.30	2.23	2.23

UTILITIES:
 ALL UTILITIES TO BE HOT-DIPPED GALVANIZED AFTER MANUFACTURE IN ACCORDANCE WITH BS 729

WIRE FABRIC:
 1. WIRE FOR CHAINLINK FABRIC ARE GALVANIZED IN ACCORDANCE WITH BS443 AND COMPLYING BS 4102 GRADE A.
 2. TENSION STRIP AND THE WIRE ARE GALVANIZED ACCORDANCE WITH BS 443

DATE: 08/09/15
 REV. NO. A
 FIRST ISSUE

BY: _____

REVISIONS: _____

MANUFACTURER: **Hi-Tech**

FAX 2914118, TEL 011-2688072, 0855015785
 2ND INDUSTRIAL ZONE AL-KHARJ ROAD RIYADH
 info@hitech-fence.com

FENCE TYPE: **2000&2400-B3TR (CLASS-A,B&C)**

DESIGN: int SCALE: AS SHOWN
 DRAWN: MOJ DATE: 08/09/15
 CHECKED: JMD DRG. NO.: _____
 APPROVED: JMD GEN-TECH-0010 REV: A

NOTES

- ALL STEEL MATERIAL OF GOOD COMMERCIAL QUALITY HOT-DIPPED GALVANIZED AFTER MANUFACTURE.
- CHAINLINK FABRIC: TENSION AND THE WIRE GALVANIZED CORE AND PLASTICIZED POLYVINYL CHLORIDE COATING COLOUR DARK GREEN.

CLASS-B:
 1. ALL STEEL MATERIAL OF GOOD COMMERCIAL QUALITY HOT-DIPPED GALVANIZED AFTER MANUFACTURE WITH AN AVERAGE ZINC COATING TO 550 G OF SURFACE AREA.

CLASS-C:
 1. ALL STEEL MATERIAL OF GOOD COMMERCIAL QUALITY HOT-DIPPED GALVANIZED AFTER MANUFACTURE AND PLASTICIZED PVC COATED COLOUR DARK GREEN.
 2. CHAINLINK FABRIC: TENSION AND THE WIRE GALVANIZED CORE AND PLASTICIZED POLYVINYL CHLORIDE COATING COLOUR DARK GREEN.

CORNER OR END PANEL

LINE POST

STRAINING PANEL

DETAIL-A

DETAIL-B

DETAIL-C

DETAIL-D

DETAIL-E

DETAIL-F

DETAIL-G

2000-2400-B6TT (CLASS-DA&DB,DC)

NOTES

- ALTERNATIVE MESH SIZES AND WIRE SIZES ARE AVAILABLE ON REQUEST.
- ALL RESPONSIBILITIES FOR CONCRETE FOUNDATIONS ARE WITH THE CONTRACTOR.
- INTERMEDIATE STRAINING POSTS TO BE PLACED AT INTERVALS CONFORMING TO THE SPECIFICATIONS TO THE CLIENT.

TECHNICAL SPECIFICATION

POSTS AND WIRES

ALL FENCE POSTS AND WIRE COMPARE WITH BS1337-47 CLASS A-1 AND TO BE HOT-DIPPED GALVANIZED AFTER MANUFACTURING WITH AN AVERAGE ZINC COATING OF 400 G/M² IN ACCORDANCE WITH BS729

ITEM	POST LENGTH	OUTSIDE DIA. (MM)	WALL THICKNESS	WEIGHT Kg / M
LINE POST	2917	2.00	2.00	3.65
CORNER OR END STRAINING POST	751	2.00	5.14	5.14
BRACE RAIL	41.8	2.30	2.20	2.23

FINISHES

ALL STEEL ITEMS TO BE HOT-DIPPED GALVANIZED AFTER MANUFACTURE IN ACCORDANCE WITH BS 729

WIRE PRODUCTS

- WIRE FOR CHAIN LINK FABRIC ARE GALVANIZED IN ACCORDANCE WITH BS44 AND COMPLYING BS 4102 GRADE A
- CHAIN STRIP AND THE WIRE ARE GALVANIZED ACCORDANCE WITH BS 729

CLASS	CHAIN LINK FABRIC MESH	TENSION WIRE DIA. (MM)	STRIP WIRE DIA. (MM)	TENON WIRE DIA. (MM)	FINISH WIRE DIA. (MM)	BASED WIRE
DA	50	2.5/2.55	3.70/4.48	2.5/2.55	1.4/2.0	12 GAUGE 2 STRIP 2 SCRAPE HOT-DIPPING
DB	50	3.76	4.50	3.00	1.8	
DC	50	3.65/4.25	3.70/4.48	2.50/4.25	1.4/2.0	

NOTES

- ALL STEEL MATERIAL OF GOOD COMMERCIAL QUALITY HOT-DIPPED GALVANIZED AFTER MANUFACTURE WITH AN AVERAGE ZINC COATING OF 550 GRM/M² OF SURFACE AREA, REF BS 729
- CHAIN LINK FABRIC, TENSION AND THE WIRE GALVANIZED CORE AND PLASTICIZED POLYURETHANE COATING COLOR DARK GREEN

CLASS-DB

- ALL STEEL MATERIAL OF GOOD COMMERCIAL QUALITY HOT-DIPPED GALVANIZED AFTER MANUFACTURE WITH AN AVERAGE ZINC COATING OF 550 GRM/M² OF SURFACE AREA
- CHAIN LINK FABRIC, TENSION AND TENSION WIRE SPECIAL COMMERCIAL QUALITY GALV OF MIN ZINC COATING OF 70-90/GM/M²

CLASS-DC

- ALL STEEL MATERIAL OF GOOD COMMERCIAL QUALITY HOT-DIPPED GALVANIZED AFTER MANUFACTURE AND PLASTICIZED PVC COATED. COLOR DARK GREEN.
- CHAIN LINK FABRIC, TENSION AND THE WIRE GALVANIZED CORE AND PLASTICIZED POLYURETHANE COATING COLOR DARK GREEN.

STRAINING PANEL

LINE POST

CORNER OR END PANEL

STRETCHER BAR

WINDING BRACKET

EXTN. ARM

EXTN. ARM

BRACE CUP

MANUFACTURER:

hi-tech industries
FAX: 04441410, TEL: 011-2999070, 0655915705
2ND INDUSTRIAL ZONE AL-KHARJ ROAD RIYADH
e-mail: @hi-tech-ksa.com

REVISIONS

NO.	DATE	BY
1	08/09/15	A

SCALE: AS SHOWN

DATE: 08/09/15

DRG. NO.: /MOZ

REV.: /MOZ

GEN-TECH-IT-0011

2000-2400-B6TR(CLASS-DA&DB,DC)

NOTES

- ALTERNATIVE MESH SIZES AND WIRE SIZES ARE AVAILABLE ON REQUEST.
- ALL RESPONSIBILITIES FOR CONCRETE FOUNDATIONS ARE WITH THE CONTRACTOR.
- INTERMEDIATE STRAINING POSTS TO BE PLACED AT INTERVALS CONFORMING TO THE SPECIFICATIONS TO THE CLIENT.

NOTES

1. ALL STEEL MATERIAL OF GOOD COMMERCIAL QUALITY HOT-DIPPED GALVANIZED AFTER MANUFACTURE WITH AN AVERAGE ZINC COATING TO 550 GM/M² OF SURFACE AREA. REF BS 729

2. CHAINLINK FABRIC, TENSION AND THE WIRE GALVANIZED CORE AND PLASTICIZED POWDERY CHLORIDE COATING COLOUR DARK GREEN

3. ALL STEEL MATERIAL OF GOOD COMMERCIAL QUALITY HOT-DIPPED GALVANIZED AFTER MANUFACTURE WITH AN AVERAGE ZINC COATING TO 550 GM/M² OF SURFACE AREA. REF BS 729

4. CHAINLINK FABRIC, TENSION AND TENSION WIRE SPECIAL COMMERCIAL QUALITY GALV OF MIN ZINC COATING OF 70-90g/m²

5. ALL STEEL MATERIAL OF GOOD COMMERCIAL QUALITY HOT-DIPPED GALVANIZED AFTER MANUFACTURE AND PLASTICIZED PVC COATED. COLOUR DARK GREEN.

6. CHAINLINK FABRIC, TENSION AND THE WIRE GALVANIZED CORE AND PLASTICIZED POWDERY CHLORIDE COATING COLOUR DARK GREEN

TECHNICAL SPECIFICATION

POSTS AND WIRE

ITEM	POST LENGTH	OUTSIDE DIA (MM)	WALL THICKNESS	WEDGE
LINE POST	3000	50.8	2.60	3.65
CORNER, END AND INTERMEDIATE STRAINING POST	751	2.60	5.14	
TOP RAIL	41.8	2.30	2.23	
	41.8	2.30	2.23	

FINISHES

ALL FENCE ITEMS TO BE HOT-DIPPED GALVANIZED AFTER MANUFACTURE IN ACCORDANCE WITH BS 729

WIRE PROFILES

1. WIRE FOR CHAIN LINK FABRIC ARE GALVANIZED IN ACCORDANCE WITH BS443 AND COMPLYING BS 4102 GRADE A

2. TENSION STRIP AND THE WIRE ARE GALVANIZED ACCORDANCE WITH BS 443

CLASS	CHAIN LINK FABRIC MESH	TENSION WIRE DIA	TENSION WIRE DIA	STRIP WIRE DIA	STRIP WIRE DIA	FINISH
DA	50	2.5/2.55	3.70/4.00	2.5/2.55	1.4/2.0	12 GAUGE 2 POINT HOT-DIP GALVANIZING
DB	50	3.0	3.70	2.5	1.8	
DC	50	3.65/4.75	3.70/4.00	3.5/4.75	1.4/2.0	

DETAILS

CORNER OR END PANEL

LINE POST

STRAINING PANEL

FINISH CLASS-DA

1. ALL STEEL MATERIAL OF GOOD COMMERCIAL QUALITY HOT-DIPPED GALVANIZED AFTER MANUFACTURE WITH AN AVERAGE ZINC COATING TO 550 GM/M² OF SURFACE AREA. REF BS 729

2. CHAINLINK FABRIC, TENSION AND THE WIRE GALVANIZED CORE AND PLASTICIZED POWDERY CHLORIDE COATING COLOUR DARK GREEN

CLASS-DB

1. ALL STEEL MATERIAL OF GOOD COMMERCIAL QUALITY HOT-DIPPED GALVANIZED AFTER MANUFACTURE WITH AN AVERAGE ZINC COATING TO 550 GM/M² OF SURFACE AREA. REF BS 729

2. CHAINLINK FABRIC, TENSION AND TENSION WIRE SPECIAL COMMERCIAL QUALITY GALV OF MIN ZINC COATING OF 70-90g/m²

CLASS-DC

1. ALL STEEL MATERIAL OF GOOD COMMERCIAL QUALITY HOT-DIPPED GALVANIZED AFTER MANUFACTURE AND PLASTICIZED PVC COATED. COLOUR DARK GREEN.

2. CHAINLINK FABRIC, TENSION AND THE WIRE GALVANIZED CORE AND PLASTICIZED POWDERY CHLORIDE COATING COLOUR DARK GREEN

DETAILS

DETAIL-A

DETAIL-B

DETAIL-C

DETAIL-D

DETAIL-E

DETAIL-F

DETAIL-B-TENSION ROD & TIGHTENER

DETAIL-C-WINDING BRACKET

DETAIL-D-BRACE CUP

DETAIL-E-66TR EXTN. ARM

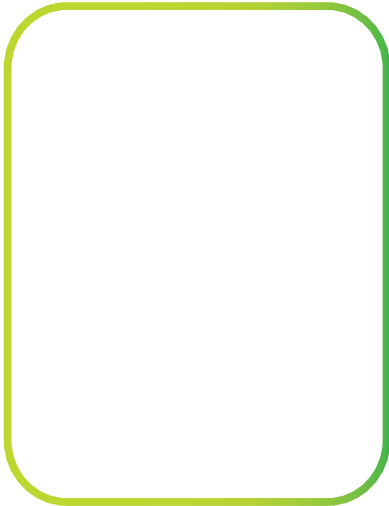
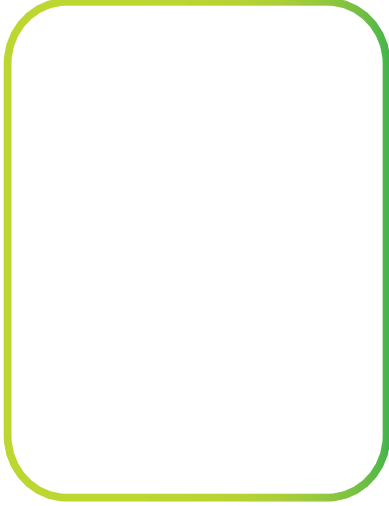
DETAIL-F-66TR EXTN. ARM

MANUFACTURER:

hi-tech

FAX 2914416, TEL 011-2680072, 0555015785
2ND INDUSTRIAL ZONE AL-KHARJ ROAD RIYADH
site@hitech-fence.com

DESIGN: int SCALE: AS SHOWN
DRAWN: MOJ DATE: 08/09/15
CHECKED: MOJ
APPROVED: -ND GEN-TECH-IT-012



ARAMCO TYPE -1	نوع ارامكو-١
ARAMCO TYPE -2	نوع ارامكو-٢
ARAMCO TYPE -3	نوع ارامكو-٣
ARAMCO TYPE -4	نوع ارامكو-٤
ARAMCO TYPE -5	نوع ارامكو-٥

Type - 11 (ARAMCO)

NOTES

- NOTES
1. ALTERNATE MESH SIZES AND WIRE SIZES ARE AVAILABLE ON REQUEST.
 2. ALL RESPONSIBILITIES FOR CONCRETE FOUNDATIONS ARE WITH THE CONTRACTOR.
 3. INTERMEDIATE STRAINING POSTS TO BE PLACED AT INTERVALS CONFORMING TO THE SPECIFICATIONS TO THE CLIENT.

TECHNICAL SPECIFICATION

WIRE AND FABRIC
 ALL FENCE POSTS AND PILES COMPLYING WITH ASTM A-53 SIZE 40 AND TO BE HOT-DIPPED GALVANIZED AFTER MANUFACTURE WITH AN AVERAGE ZINC COATING OF 550 GR/M

ITEM	POST LENGTH (MM)	OUTSIDE DIA. (MM)	WALL THICKNESS (MM)	WEIGHT Kg / M
LINE POST	3400	60.3	3.97	5.44
CORNER OR END STRAINING POST	3400	73.0	5.16	8.65
BRACE RAIL	2000	42.2	3.56	3.39

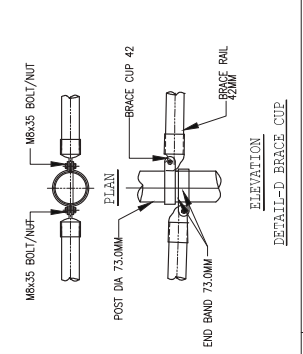
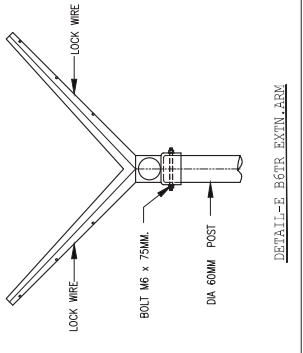
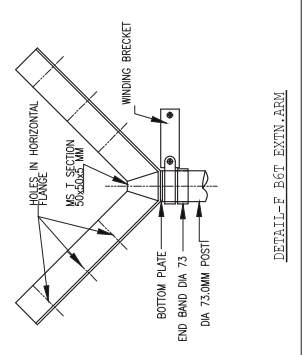
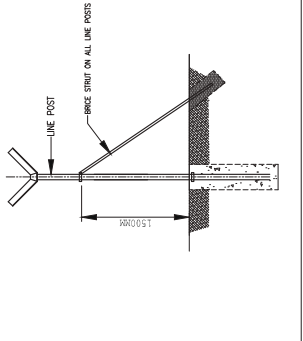
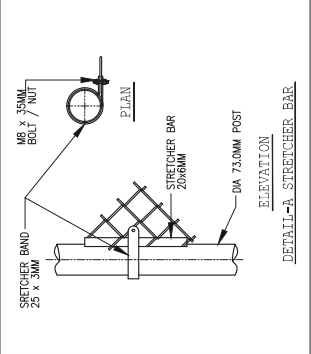
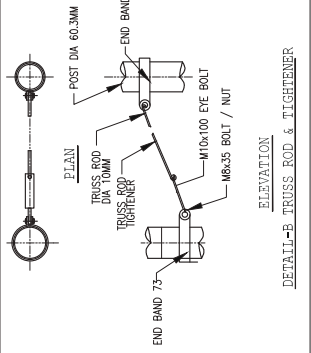
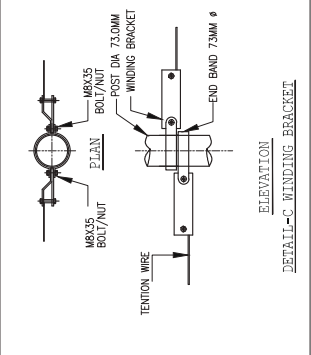
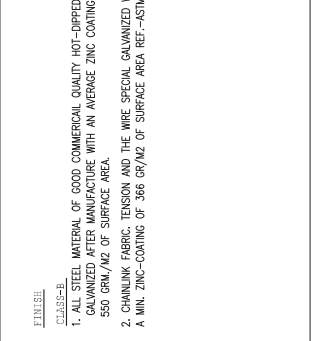
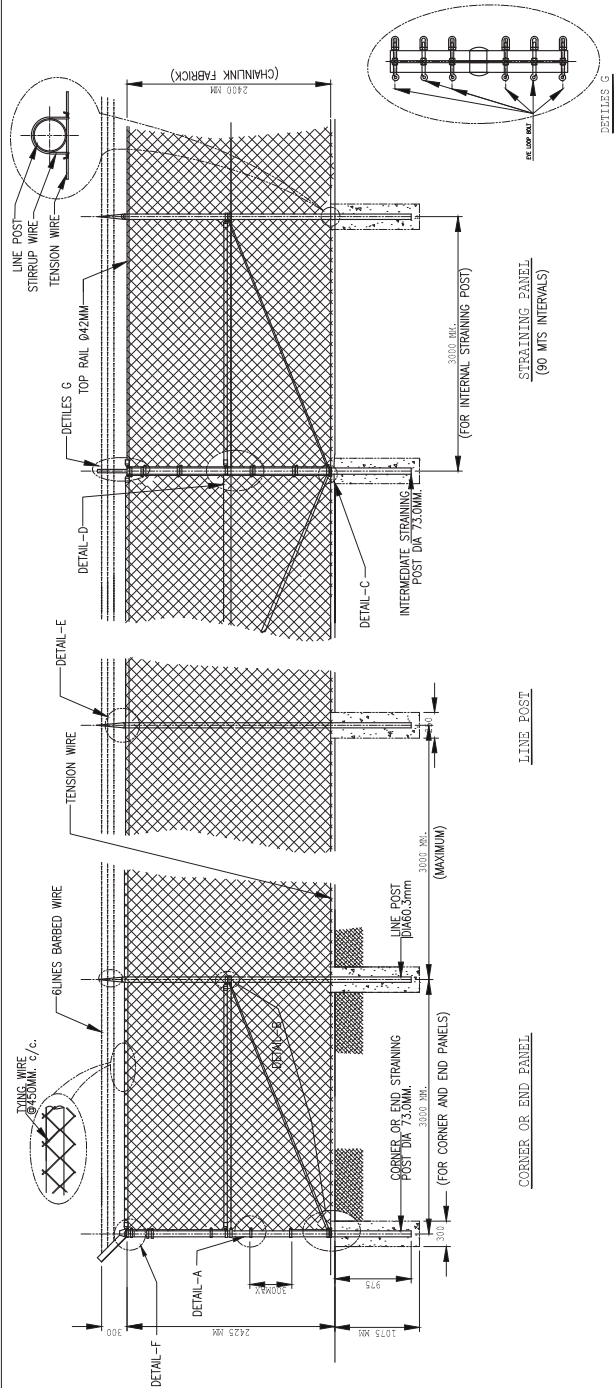
- DETAILS
 ALL POSTS ARE TO BE HOT-DIPPED GALVANIZED AFTER MANUFACTURE WITH AN AVERAGE ZINC COATING OF 550 GR/M
 WITH IN ACCORDANCE WITH ASTM A133 AND A135
 WIRE PRODUCTS
 1. WIRE FOR CHAIN LINK FABRIC GALVANIZED IN ACCORDANCE WITH ASTM A133 AND A135
 2. CHAIN LINK FABRIC TENSION AND THE WIRE SPECIAL GALVANIZED WITH A MIN. ZINC-COATING OF 366 GR/M² OF SURFACE AREA REF.-ASTM A-392
 CLASS OR PVC COATED REF-7-688

CLASS	CHAIN LINK FABRIC MESH	TENSION WIRE DIA.	STRETCHER WIRE	STRIP WIRE	SHED WIRE
B	50	3.76	4.50	3.05	2.50
					12 GAUGE / 2.98MM
					UPONITE BASES #1 TO 2 SPRINGS

MANUFACTURER:

 P.O. BOX 14419, TEL: 011-2606072, 055-5015795
 2ND INDUSTRIAL AREA, PHASE II, ROAD 8/17/4/11
 Gurgaon, Haryana, India
 Email: info@hi-tech.com

TITLE:	TYPE - II (ARAMCO)
DESIGN:	int.
SCALE:	AS SHOWN
DATE:	08/09/15
DWG. NO.:	
REV.:	
APPROVED:	-ND GEN-TECH-014 A



Type - 111 (ARAMCO)

NOTES

1. ALTERNATIVE MESH SIZES AND WIRE SIZES ARE AVAILABLE ON REQUEST.
 2. ALL RESPONSIBILITIES FOR CONCRETE FOUNDATIONS ARE WITH THE CONTRACTOR.
 3. INTERMEDIATE STRAINING POSTS TO BE PLACED AT INTERVALS CONFORMING TO THE SPECIFICATIONS TO THE CLIENT.
 4. ALL M6 BOLT / NUT ARE CORNERS BOLT/NUT

TECHNICAL SPECIFICATION

FENCE AND PILES
 ALL FENCE POSTS AND PILES COMPLYING WITH ASTM A-53 SCH 40 AND TO BE HOT-DIPPED GALVANIZED AFTER MANUFACTURE WITH AN AVERAGE ZINC COATING OF 550 GR/M²

ITEM	POST LENGTH DA (MM)	OUTSIDE DA (MM)	WALL THICKNESS	WEIGHT Kg / M
LINE POST	3400	60.3	3.97	5.44
LINE POST END AND STRAINING POST	3400	73.0	5.16	8.65
BRACE RAIL	3000	42.2	3.56	3.39

UTILITIES
 UTILITIES TO BE HOT-DIPPED GALVANIZED AFTER MANUFACTURE ACCORDANCE WITH ASTM A153 AND A154.

WIRE SPECIFICS
 1. WIRE FOR CHAIN LINK FABRIC ARE GALVANIZED
 2. TENSION STRIP AND THE WIRE ARE GALVANIZED

CLASS	CHAIN LINK FABRIC MESH	TENSION WIRE DA	STRIP WIRE DA	FINISH WIRE	BASED WIRE
B	50	3.76	4.50	3.05	12 GAUGE 25RANGES 4 POINTS BASIS #102 SPACING

FINISH
 1. ALL STEEL MATERIAL OF GOOD COMMERCIAL QUALITY HOT-DIPPED GALVANIZED AFTER MANUFACTURE WITH AN AVERAGE ZINC COATING OF 550 GR/M² OF AREA REF ASTM A-153 AND A-154
 2. CHAINLINK FABRIC: TENSION AND THE WIRE SPECIAL GALVANIZED WITH A MIN. ZINC-COATING OF 308 GR/M² OF SURFACE AREA REF-ASTM A-392

CORNER OR END PANEL
 (FOR CORNER AND END PANELS)
 CORNER OR END STRAINING POST DIA 73.0MM, ASTM, 3000 MS.
 LINE POST DIA 60.3MM, 3000 MS. (MAXIMUM)
 6 LINES BARBED WIRE
 DETAIL-A, DETAIL-B, DETAIL-C, DETAIL-D, DETAIL-E, DETAIL-F, DETAIL-G

LINE POST
 DETAIL-C, DETAIL-D, DETAIL-E, DETAIL-F, DETAIL-G

STRAINING PANEL
 DETAIL-C, DETAIL-D, DETAIL-E, DETAIL-F, DETAIL-G
 CHAINLINK FABRICK 2400 MM
 TOP RAIL 042MM
 INTERMEDIATE STRAINING POST DIA 73.0MM, 3000 MS.
 (FOR INTERNAL STRAINING POST)

DETAIL-A STRETCHER BAR
 ELEVATION
 STRETCHER BAR 20x6240MM
 DA 73.0MM POST
 M6.35 BOLT / NUT
 BRACE CUP 42
 BRACE RAIL 42.2MM

DETAIL-B TRUSS ROD & TIGHTENER
 ELEVATION
 TRUSS ROD TIGHTENER M10x100 EYE BOLT
 M6.35 BOLT / NUT
 END BAND 73.0
 POST DIA 73.0
 END BAND 60.3MM

DETAIL-C WINDING BRACKET
 ELEVATION
 WINDING BRACKET
 POST DIA 73.0MM
 END BAND 73MM Ø
 TENSION WIRE
 JERKES BOLT/NUT

DETAIL-D BRACE CUP
 ELEVATION
 BRACE CUP 42
 BRACE RAIL 42.2MM
 END BAND 73.0MM
 POST DIA 73.0MM
 M6.35 BOLT/NUT

DETAIL-E B6TR EXTN.ARM
 ELEVATION
 LOCK WIRE
 LOCK WIRE
 BOLT M6 x 75MM
 DA 60MM POST

DETAIL-F B6T EXTN.ARM
 ELEVATION
 HOUSE IN HORIZONTAL FLANGE SECTION 55-55x53.3 MM
 41.9MM TOP RAIL
 BOTTOM PLATE
 END BAND DA 73.0MM POST DIA 73.0MM POST

DETAIL-G
 FINISH
 1. ALL STEEL MATERIAL OF GOOD COMMERCIAL QUALITY HOT-DIPPED GALVANIZED AFTER MANUFACTURE WITH AN AVERAGE ZINC COATING OF 550 GR/M² OF AREA REF ASTM A-153 AND A-154
 2. CHAINLINK FABRIC: TENSION AND THE WIRE SPECIAL GALVANIZED WITH A MIN. ZINC-COATING OF 308 GR/M² OF SURFACE AREA REF-ASTM A-392

MANUFACTURER:
 hi-tech
 2ND INDUSTRIAL ZONE AL-KHARJ ROAD RIYADH
 2314419, TEL 011-268072, 055015795
 info@hi-tech.com

DESIGN: int SCALE: AS SHOWN
DATE: 08/09/15
CHECKED: JMD
APPROVED: JMD
GEN-TECH-015

Type - 1V (ARAMCO)

NOTES

WIRE:

- ALTERNATE MESH SIZES AND WIRE SIZES ARE AVAILABLE ON REQUEST.
- ALL DIMENSIONS AND TOLERANCES ARE WITH THE CONTRACTOR.
- INCREASE STIRRUP LENGTH TO BE PLACED AT INTERVALS CORRESPONDING TO THE SPECIFICATIONS TO THE CLIENT.
- FOR FOOTING DETAIL REF ARAMCO DRAWING.
- ALL MB BOLT/NUT ARE CORRUDE 800/UNIT.

TECHNICAL SPECIFICATION

FENCE AND PILES

ALL FENCE POSTS AND PILES COMPLYING WITH ASTM A-53 SO1 AND TO BE HOT-DIPPED GALVANIZED AFTER MANUFACTURE WITH AN AVERAGE ZINC COATING OF 550 GRAM.

ITEM	POST LENGTH	OUTSIDE DIA. (MM)	WALL THICKNESS	WEIGHT Kg / M
LINE POST	3400	60.3	3.97	5.44
CORNER OR END STRAINING POST	3400	73.0	5.16	8.65
BRACE RAIL	2900	42.2	3.56	3.39

UTILITIES


ALL UTILITIES TO BE HOT-DIPPED GALVANIZED AFTER MANUFACTURE ACCORDANCE WITH ASTM A323 AND A153.

WIRE PRODUCTS

- WIRE FOR CHAIN LINK FABRIC ARE GALVANIZED IN ACCORDANCE WITH ASTM A323 CLASS 1
- TENSION, STIRRUP AND THE WIRE ARE GALVANIZED ACCORDANCE WITH ASTM A323 CLASS 1

DATE	REV. NO.	REV. ISSUE	BY
08/24/15	A		

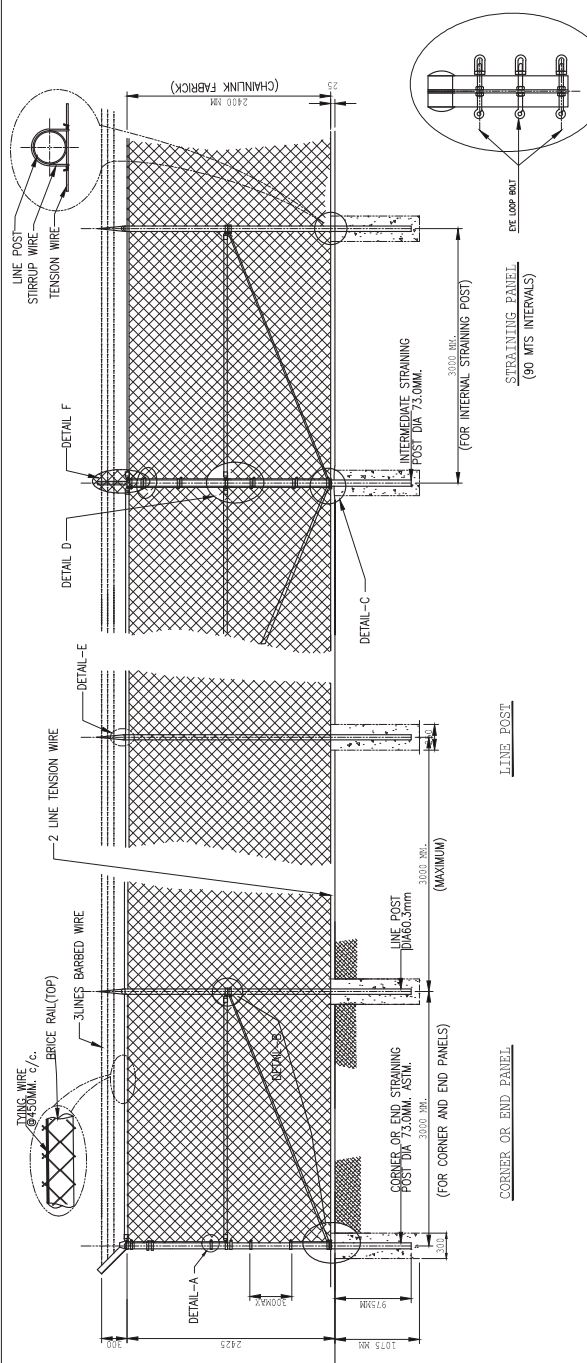
MANUFACTURER:



FAX 2914419, TEL 011-2680072, 055015795
2ND INDUSTRIAL ZONE AL-KHARJ ROAD RIYADH
sales@hi-tech.com

TITLE: TYPE - 1V (ARAMCO)

DESIGN: int. SCALE: AS SHOWN
DRAWN: MOJ DATE: 08/09/15
CHECKED: MOJ
APPROVED: -ND GEN-TECH-016 REV: A



LINE POST

STRAINING PANEL (90 MIS INTERVALS)

INTERMEDIATE STRAINING POST DIA 73.0MM.

FOR INTERNAL STRAINING POST

FOR CORNER AND END PANELS

CORNER OR END STRAINING POST DIA 73.0MM, ASTM.

FOR CORNER AND END PANELS

LINE POST

STRAINING PANEL (90 MIS INTERVALS)

FOR INTERNAL STRAINING POST

FOR CORNER AND END PANELS

CORNER OR END STRAINING POST DIA 73.0MM, ASTM.

FOR CORNER AND END PANELS

FINISH:

CLASS-B

- ALL STEEL MATERIAL OF GOOD COMMERCIAL QUALITY HOT-DIPPED GALVANIZED AFTER MANUFACTURE WITH AN AVERAGE ZINC COATING TO 550 GRAM/M² OF SURFACE AREA.
- CHAIN LINK FABRIC TENSION AND THE WIRE SPECIAL GALVANIZED WITH A MIN. ZINC-COATING OF 386 GR/M² OF SURFACE AREA REF-ASTM A-392

ELEVATION

DETAIL-A STRETCHER BAR

DETAIL-B TRUSS ROD & TIGHTENER

DETAIL-C WINDING BRACKET

DETAIL-D BRACE CUP

DETAIL-E BOTT. EXTN. ARM

DETAIL-F BTT. EXTN. ARM

Type - V (ARAMCO)

NOTES

- ALTERNATIVE MESH SIZES AND WIRE SIZES ARE AVAILABLE ON REQUEST.
- ALL RESPONSIBILITIES FOR CONCRETE FOUNDATIONS ARE WITH THE CONTRACTOR.
- INTERMEDIATE STRAINING POSTS TO BE PLACED AT INTERVALS CONFORMING TO THE SPECIFICATIONS TO THE CLIENT.

TECHNICAL SPECIFICATION

POSTS AND PILES

ALL FENCE POSTS AND PILES COMPLYING WITH ASTM A-53 SON 40 AND TO BE HOT-DIPPED GALVANIZED AFTER MANUFACTURE WITH AN AVERAGE ZINC COATING OF 500 GR/M².

ITEM	POST LENGTH	OUTSIDE DIA. (MM)	WALL THICKNESS	WEIGHT Kg / M
LINE POST	3400	60.3	3.97	5.44
CORNER OR END STRAINING POST	3400	73.0	5.16	8.65
BRACE RAIL	2900	42.2	3.56	3.39

FINISHES


ALL STEEL PARTS TO BE HOT-DIPPED GALVANIZED AFTER MANUFACTURE ACCORDANCE WITH ASTM A-53 AND A-153.

WIRE SPECIES

- WIRE FOR CHAIN LINK FABRIC ARE GALVANIZED IN ACCORDANCE WITH ASTM A322
- TENSION, STIRRUP AND THE WIRE ARE GALVANIZED ACCORDANCE WITH ASTM A641 CLASS 1.

CLASS	CHAIN LINK MESH	CHUNK LINK FABRIC	TENSION WIRE DIA.	STIRRUP WIRE DIA.	FINISH	BASED WIRE
B	50	3.76	4.5	3.00	2.50	NOT APPLICABLE

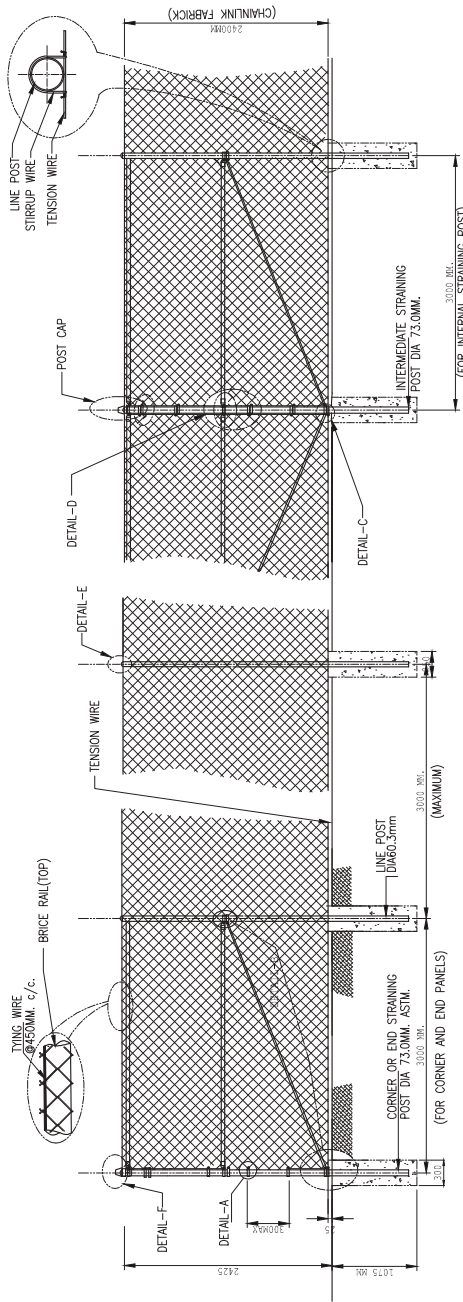
MANUFACTURER:



FAX 2914419, TEL 011-2680072, 0555015795
2ND INDUSTRIAL ZONE AL-KHARJ ROAD RYAD
www.hi-tech.com.sa

FENCE TYPE:
TYPE-V (ARAMCO)

DESIGN: int. SCALE: AS SHOWN
DRAWN: MOJZ DATE: 08/09/15
CHECKED: JMD DRS. NO.:
APPROVED: -ND GEN-TECH-017 REV: A



CORNER OR END PANEL (FOR CORNER AND END PANELS)
CORNER OR END STRAINING POST DIA 73.0MM. ASTM. 3000 MAX. (MAXIMUM)
LINE POST DIA 60.3MM. 3000 MAX.
BRACE RAIL (TOP) TENSION WIRE (47-430MM. C/C).
DETAIL-F
DETAIL-A
DETAIL-E
TENSION WIRE
POST CAP
DETAIL-D
LINE POST
STIRRUP WIRE
TENSION WIRE
DETAIL-C
INTERMEDIATE STRAINING POST DIA 73.0MM. 3000 MAX. (FOR INTERNAL STRAINING POST)(CHAIN LINK FABRIC) 2300MM

LINE POST
3000 MAX.

STRAINING PANEL (90 M/S INTERVALS)
3000 MAX.

FINISH CLASS-B

- ALL STEEL MATERIAL OF GOOD COMMERCIAL QUALITY HOT-DIPPED GALVANIZED AFTER MANUFACTURE WITH AN AVERAGE ZINC COATING FD 500 GR/M² OF SURFACE AREA. REF. TO ASTM A153/A153M-15
- CHAIN LINK FABRIC, TENSION AND THE WIRE SPECIAL GALVANIZED WITH A MIN. ZINC-COATING OF 366 GR/M² OF SURFACE AREA REF. ASTM A-392

DETAIL-B TRUSS ROD & TIGHTENER
ELEVATION
PLAN
TRUSS ROD DIA 10MM
TRUSS ROD TIGHTENER
POST DIA 73.0
M10x100 EYE BOLT
END BAND 73
M8x35 BOLT / NUT

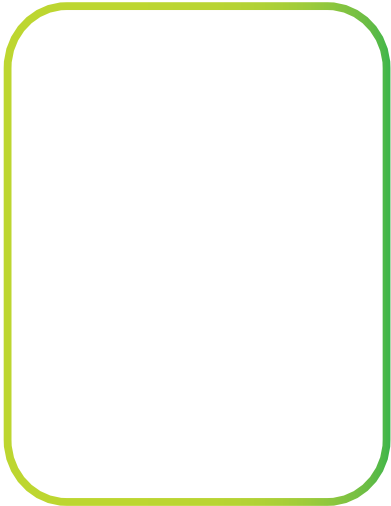
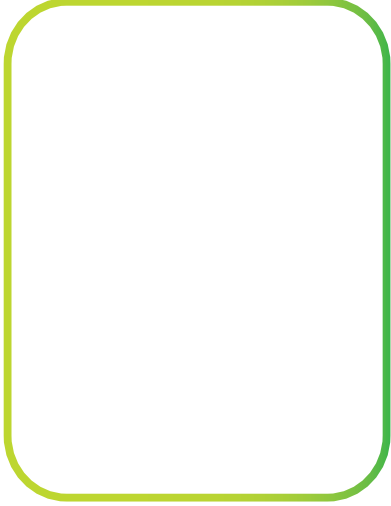
DETAIL-C WINDING BRACKET
ELEVATION
PLAN
M8x35 BOLT/NUT
WASER BOLT/NUT
POST DIA 73.0MM
WINDING BRACKET
TENSION WIRE
END BAND 73MM Ø

DETAIL-D BRACE CUP
ELEVATION
PLAN
M8x35 BOLT/NUT
POST DIA 73.0MM
BRACE CUP 42
END BAND 73.0MM
BRACE RAIL 42.2MM

DETAIL-E LINE POST CAP
ELEVATION
PLAN
PLASTIC CAP

DETAIL-F CORNER END STRAINING POST CAP
ELEVATION
PLAN
POST CAP 73MM
M8x35 BOLT/NUT
WINDING BRACKET
END BAND
DIA 75 MM POST

DETAIL-G BRACE STRUT
ELEVATION
BRACE POST ON UNIMBERGRIPT FENCE
BRACE STRUT
RUNS ON 90-DIA CENTER
1500



أس أس دي - ١ تسوير
أس أس دي - ٢ تسوير

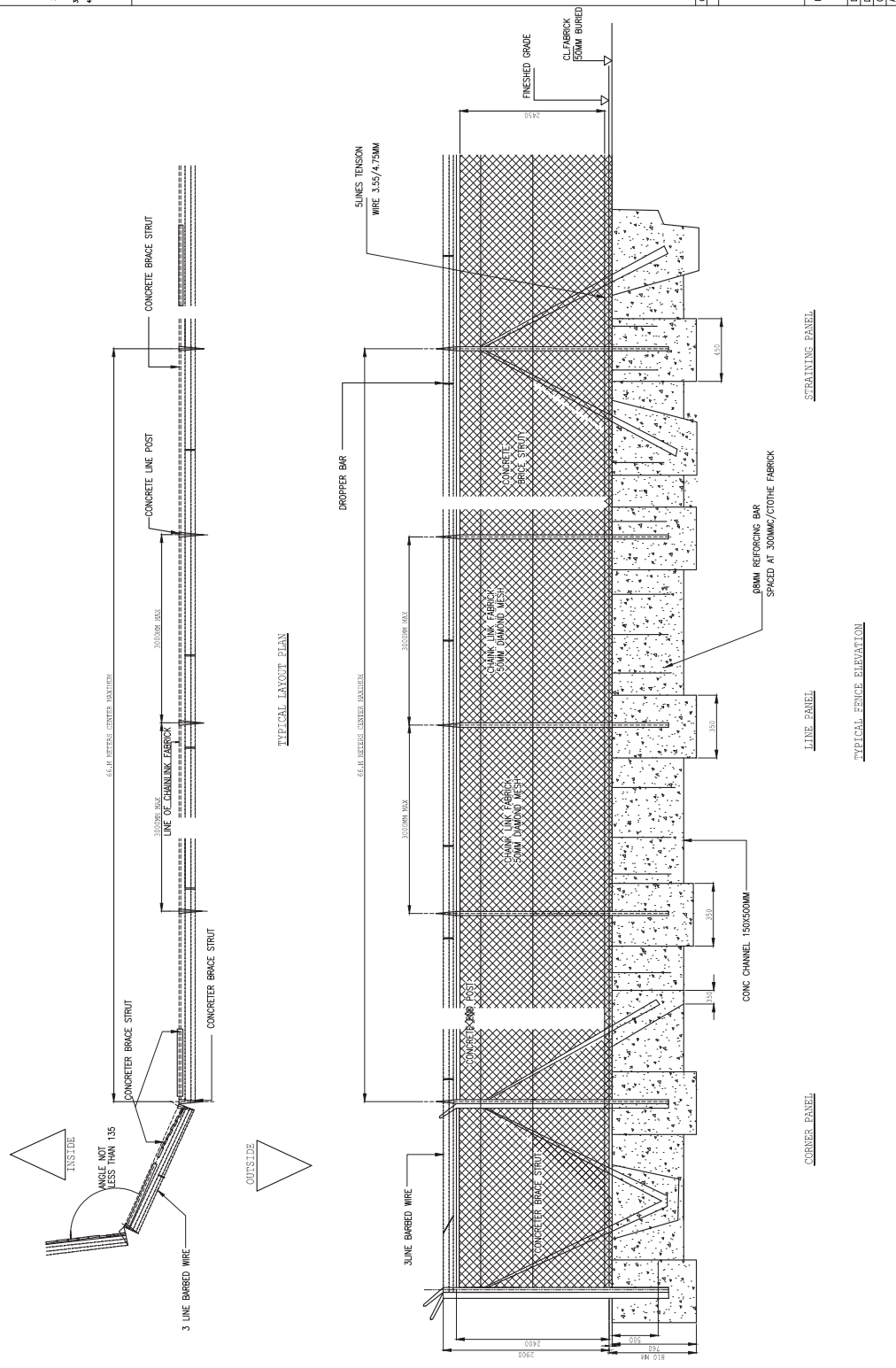
S.S.D -1 - FENCE

S.S.D -2 - FENCE

S.S.D -1

NOTES

- SIZES**
1. ALL DIMENSIONS FOR CONCRETE FOOTING AND CHANNEL ARE IN MILLIMETERS UNLESS SPECIFIED OTHERWISE.
 2. DIMENSIONS FOR CONCRETE BRACE STRUTS ARE SHOWN IN DIMENSIONS 150-1
 3. THIS DRAWING TO BE READ IN CONJUNCTION WITH SS-01 FINISHING SCHEDULE OF 2
 4. FOR THE SAKE OF CLARITY RETRIEVE POST LINE POST ARE ONE AND THE SAME



DATE	REV	BY	REVISIONS
28/07/15	A		

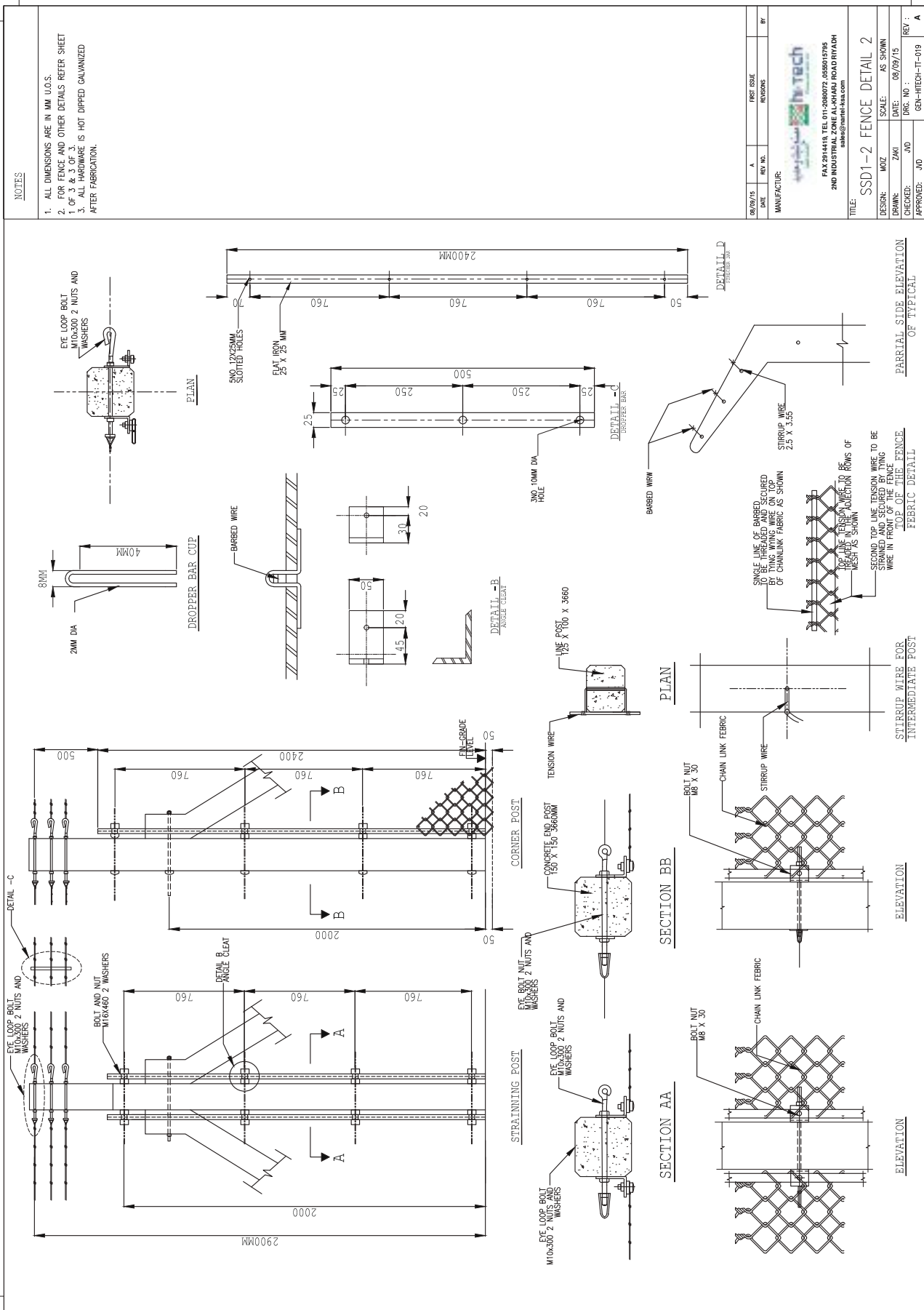
MANUFACTURE:

Hi-Tech Fence & Steel Industries

FAX 234418, TEL 011-208072, 055019795
 2ND INDUSTRIAL ZONE AL-KHARJ ROAD RIYADH
 h.t.i@hi-tech-fence.com

FENCE TYPE: **SSD1**

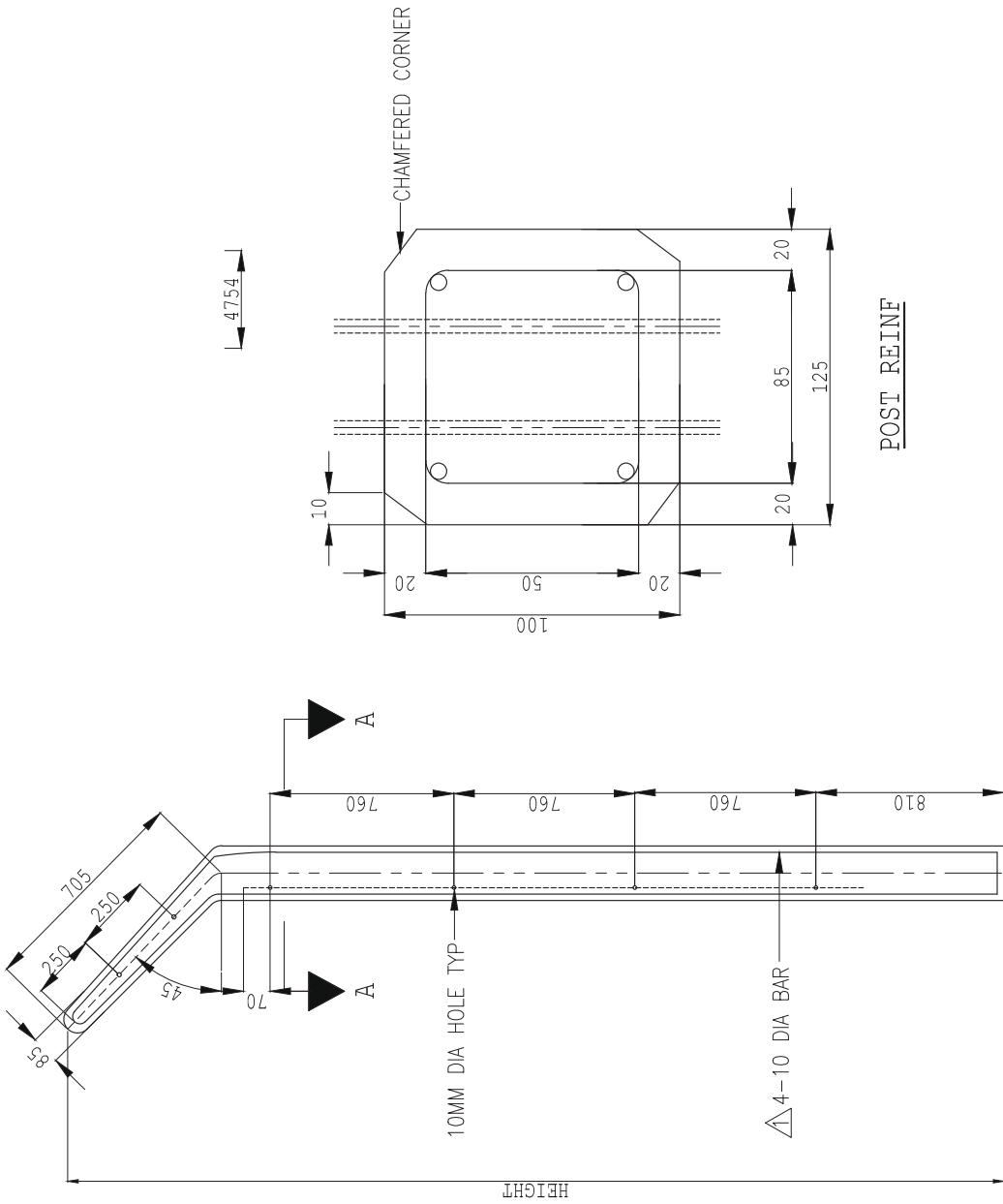
DESIGN: JH	SCALE: AS SHOWN
DRAWN: MOZ	DATE: 08/09/15
CHECKED: JVD	DRS. NO.: GEN-TECH-IT-18
APPROVED: JVD	REV: A



S.S.D -1

NOTES

1. ALL DIMENSION ARE IN MM U O S.
2. ALL REBARS ARE M.S BLOCK
3. COVER TO BARS
- A.) REINF - NOT LESS THE 16.
- B.) END - NOT LESS THE 25.
4. ALL BOLT IS TO FENCING BE BURRED OVER AFTER INSTALLATION.



REINF DETAIL

LINE POST

MANUFACTURER:



 FAX: 2914419, TEL: 011-2680072, 0555015795

 2ND INDUSTRIAL ZONE AL-KHARJ ROAD RIYADH

 sales@hi-tech-hsa.com

TITLE: SSD1-3

DESIGN:	imt	SCALE:	AS SHOWN
DRAWN:	MOZ	DATE:	08/09/15
CHECKED:	MOZ	DRG. NO.:	
APPROVED:	ND	GEN-TECH-020	REV.:
			A

S.S.D -1

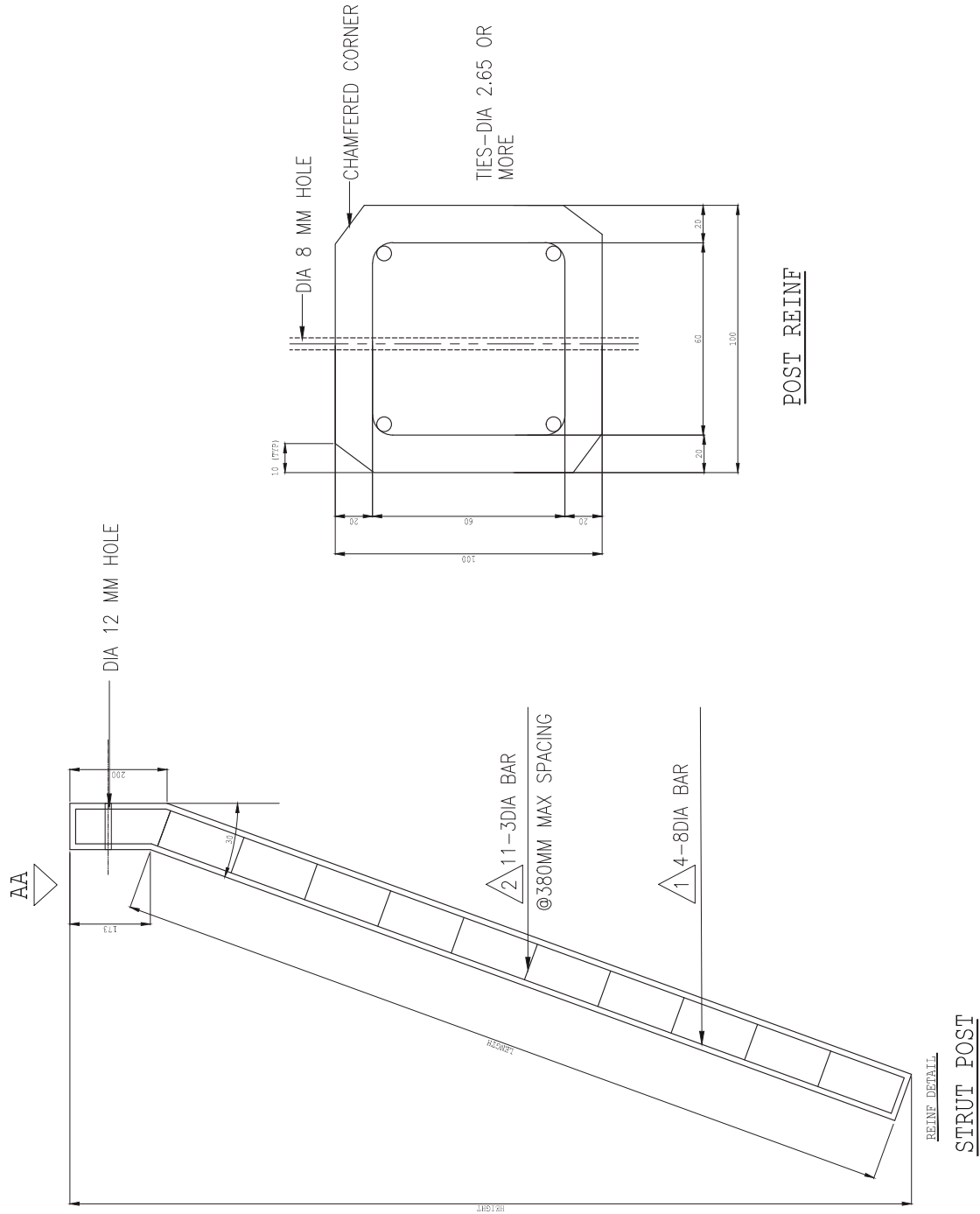
NOTES

- NOTES
 1. ALL DIMENSIONS ARE IN MM U.S.
 2. ALL REINBS ARE M.S BLACK
 3. COVER TO INBS
 A) 20MM - TOP & BOTTOM
 B) 10MM - SIDES
 4. ALL BOLTS TO FENCING BE BARRED OVER AFTER INSTALLATION.

MANUFACTURER:

 FAX: 2914419, TEL: 011-2680072, 0555015795
 2ND INDUSTRIAL ZONE AL-KHARJ ROAD RIYADH
 sales@hi-tech.com

TITLE: SSD1-4	
DESIGN: imt	SCALE: AS SHOWN
DRAWN: MOZ	DATE: 08/09/15
CHECKED: JMD	DWG. NO. :
APPROVED: -ND	GEN-TECH-021
	REV : A



S.S.D - 2

NOTES

LINE POST ROUND TUBE 48.0MM O.D WALL THICKNESS 3MM TOTAL HEIGHT = 3900MM.
TUBULAR POST TOTAL HEIGHT = 3900MM.
CORNER END AND STARTING POST ROUND TUBE GALVANIZED TO TOP OF CORNER END AND STARTING POST ROUND TUBE THE TUBULAR POST TOTAL HEIGHT = 3900MM COMPLETE WITH:

BRACE STRUTS 50X50mm TUBE 48.0X3.3 O.D. LENGTH 3200MM ONE END PRESSED-DRILLED AND FASTENED TO THE POST BY BOLT NUT M8 X35 IN AN END BAND OR HALF BAND BASE PLATE OF THE 150X150X3MM THK. TO BE WELDED ON OTHER END.

BASE PLATE 150X150X3MM WELDED BEFORE GALVANIZATION

THE BAR ROUND TUBE 48.0MM O.D WALL THK 3MM LENGTH=750MM ENDS FLATTENED + DRILLED FASTENED BY BOLT NUT M8X35 IN AN END BAND AND HALF BAND.

STRETCH BAR 20X6MM FASTENED WITH STRETCHER BAR BAND 60.0MM AT PROXY X 300 MM INTERVAL L =2400MM

WINDING BRACKETS FASTENED WITH END 60.0MM

EYELOOP BOLT NUT M10 X 200 WITH WASHERS.

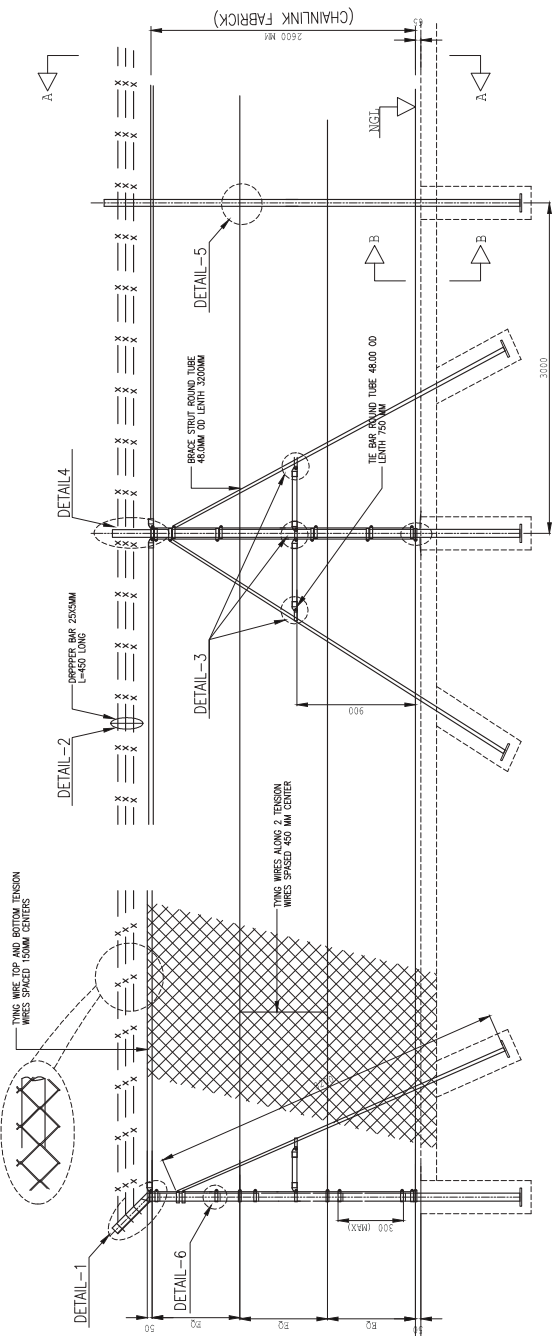
CHANLUKE FABRIC 50MM DIAMOND MESH HEIGHT 2600 WIRE DIA METER 3.076/4.88MM PVC EXTRUDED 50MM LENGTH EMBEDDED BELOW GROUND LEVEL

TENSION WIRE 3.76/4.88MM PVC EXTRUDED

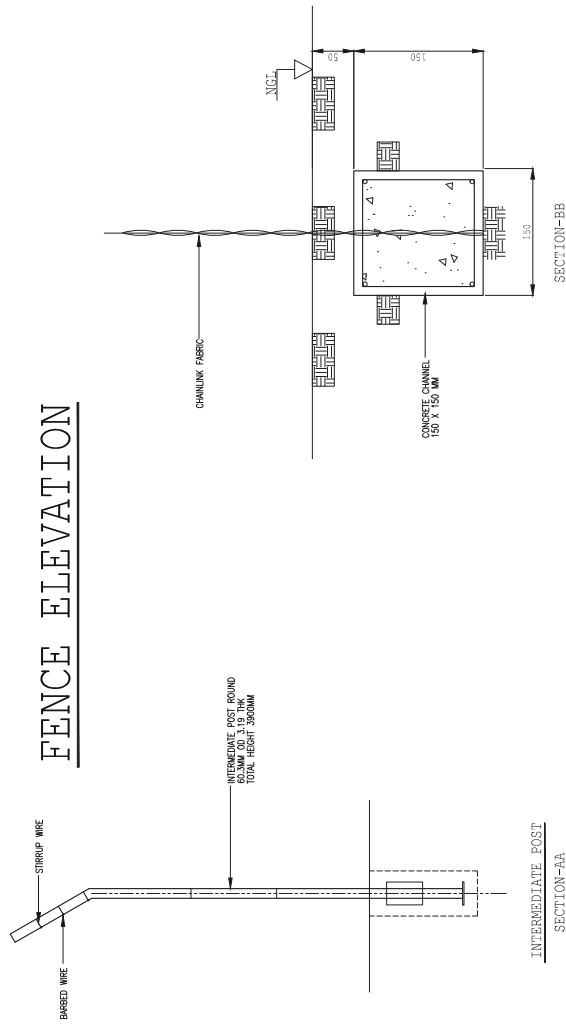
STIRRUP WIRE 2.50/3.55 PVC EXTRUDED

TYING WIRE 1.6/2.0MM PVC EXTRUDED

BARRED WIRE 3 UNES ASTM A-1212 STRANDS 12.5 GA (2.5MM) 4 POINT BARBS (12MM) AND SPACED 102MM APART GALVANIZED



FENCE ELEVATION



DATE	REV NO.	A	REV NO.	BY
08/09/15				

MANUFACTURER:



DESIGN:		SCALE:	
SSD2	int.	AS SHOWN	
DRAWN:		DATE:	
		08/09/15	
CHECKED:		DWG. NO.:	
APPROVED:		REV.:	

NOTES

TECHNICAL SPECIFICATION

LINE POST 60.3MM PIPE 3.90MM WALL THICKNESS
 5.44 KG/M
 CORNER END AND STRAINING POST 73.0MM
 O.D. PIPE 5.16MM WALL THICKNESS 8.6KG/
 M SCHEDULE 40.0 COMPLETE WITH BRACE STRUT
 2.23 KG/M AND TO BE BURIED DIRECTLY INTO THE
 GROUND STRETCHER BARS 20X6 MM FASTENED WITH
 BANDS AT APPROXIMATELY 300MM INTERVALS.

TYPE NO	POST LENGTH	POST HEIGHT	POST HEIGHT	POST HEIGHT	POST HEIGHT	POST HEIGHT	POST HEIGHT	POST HEIGHT	POST HEIGHT
2000 TT	3000MM	2000MM	2000MM	2000MM	2000MM	2000MM	2000MM	2000MM	N/A

CHAINLINK FABRIC	TENSION WIRE	STRETCHER WIRE	STRAP WIRE	TMC WIRE
50MM	4.0	4.5	3.0	1.8

FINISH

- ALL STEEL MATERIAL OF GOOD COMMERCIAL QUALITY HOT-DIPPED GALVANIZED AFTER MANUFACTURE WITH AN AVERAGE ZINC COATING FO 400 GR./M² OF SURFACE AREA.
- CHAINLINK FABRIC AND ALL WIRE PRODUCT ARE OF GOOD COMMERCIAL GALVANIZED QUALITY.

DETAIL-A
 STRETCHER BAR 20 x 6MM
 CHAINLINK FABRIC
 BRACE STRUT 42.0MM O.D.
 WINDING BRACKET
 CORNER END 73.0MM O.D.
 LINE POST 60.3MM O.D.
 CHAINLINK FABRIC 50MM DIAMOND MESH

DETAIL-B
 STRAINING POST 73.0MM O.D.

DETAIL-C
 WINDING BRACKET

DETAIL-D
 TRAPEZOIDAL CAP

DETAIL-E
 STRETCHER BAR 20 x 6MM
 CHAINLINK FABRIC
 BRACE STRUT 42.0MM O.D.
 WINDING BRACKET

DETAIL-A STRETCHER BAR
 ELEVATION
 STRETCHER BAR 20 x 6MM
 CHAINLINK FABRIC
 BOLT NUT M8X35
 STRETCHER BAND 25X3

DETAIL-C WINDING BRACKET
 ELEVATION
 END BAND 30X3
 TENSION WIRE
 WINDING BRACKET
 BOLT NUT M8X15

DETAIL-D BRACE CAP
 ELEVATION
 BRACE STRUT
 END BAND 25X3
 BOLT NUT M8X15
 BRACE CAP

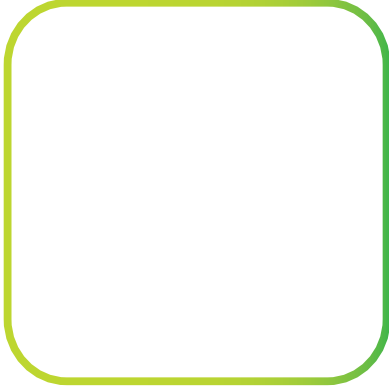
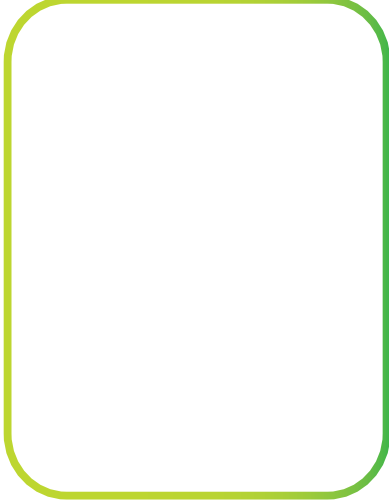
DETAIL-E TR CAP
 ELEVATION
 DOME CAP
 END BAND DIA 73
 DIA 73.0 MM POST

MANUFACTURER:

 2ND INDUSTRIAL ZONE AL-KHARJ ROAD RIYADH
 055015795
 info@hitech.com

DESIGN: IMT
SCALE: AS SHOWN
DATE: 08/09/15
CHECKED: JMD
DWG. NO.: GEN-HI-TECH-023
APPROVED: JMD

REV.: A



بوابات

بوابات ذات بناء تراكيبي مثبتة بالمسامير

بوابات ذات بناء تراكيبي ملحومة

إس إس دي ٥ بوابات - بوابات زلاقة تعمل يدويا

بوابات زلاقة تعمل بالتيار الكهربائي

GATES

BOLTED CONSTRUCTION GATES

WELDED CONSTRUCTION GATES

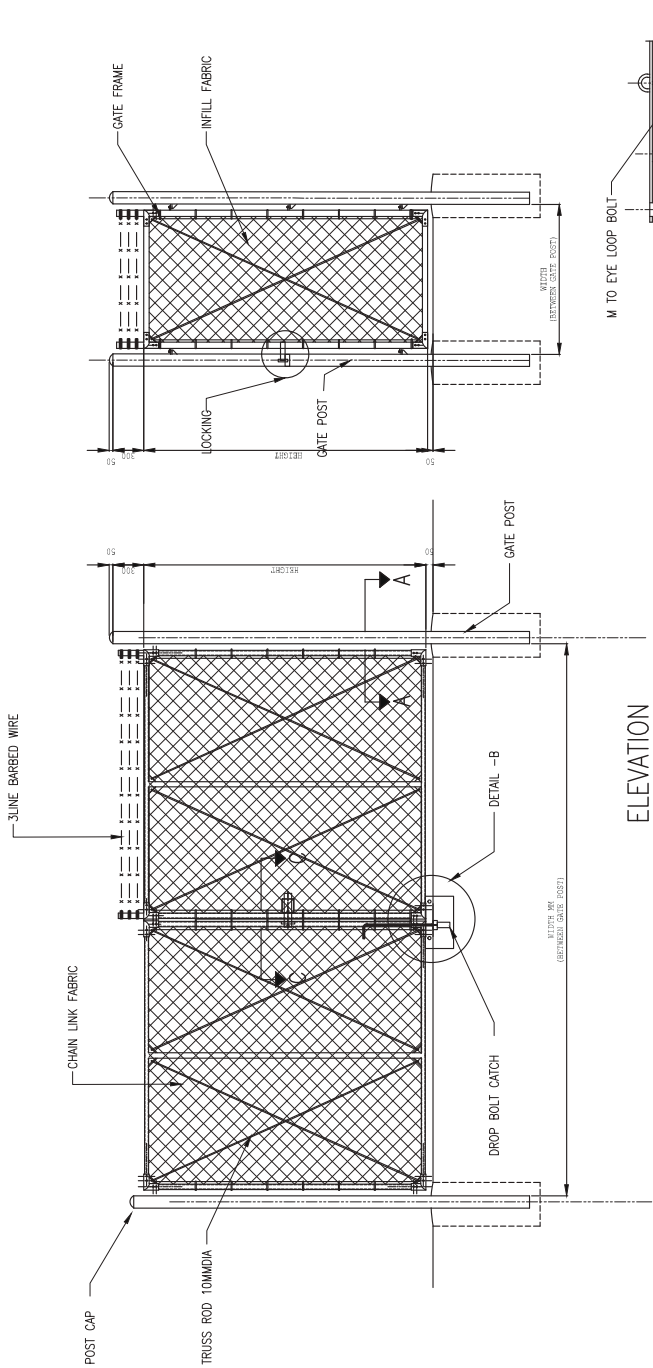
SSD - 5 GATES

MANUALLY OPERATED SLIDING GATES

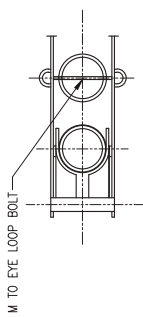
ELECTRICALLY OPERATED SLIDING GATES

GATES

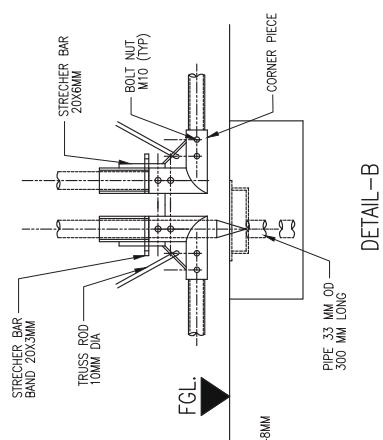
NOTES
1. ALL DIMENSIONS ARE IN MILLIMETERS UNLESS OTHERWISE NOTED.



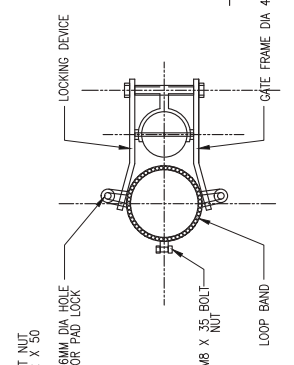
ELEVATION
TYPICAL DOUBLE AND SINGLE LEAF GATE



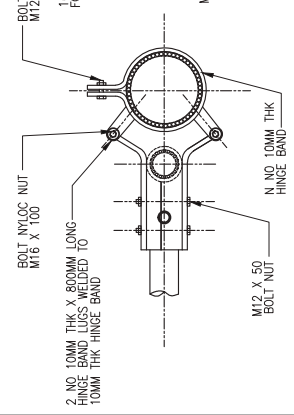
LOCKING DEVICE
SECTION -CC
(DOUBLE LEAF GATE)



DETAIL-B



PLAN-LOCKING DEVICE
(SINGLE LEAF GATE)

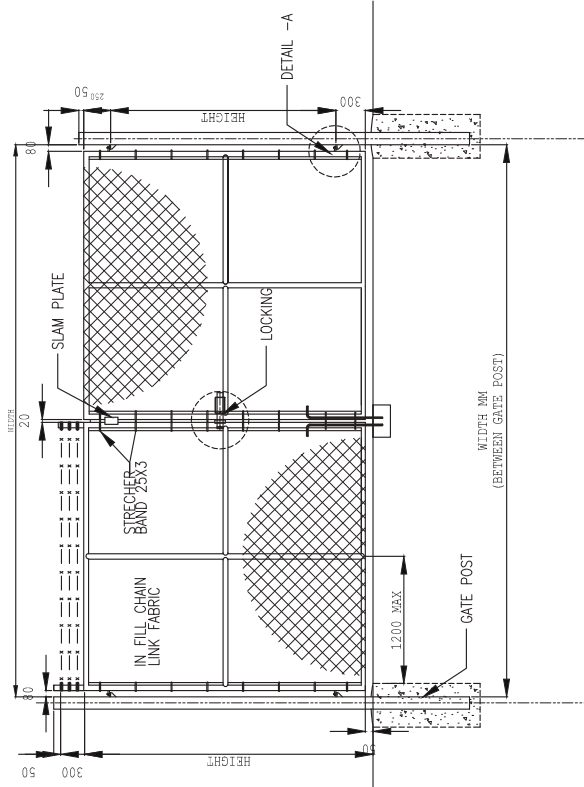
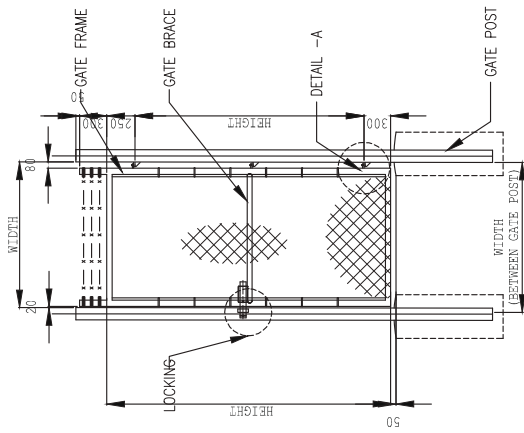


SECTION AA

08/09/15	A	DATE	REV. NO.	REV. ISSUE REVISIONS	BY
MANUFACTURER:  FAX 20 4419 TEL 01 5309072 0656015795 2ND INDUSTRIAL ZONE AL-KHARRA, ROAD RIYADH sales@hitech-ksa.com					
TITLE: GATE					
DESIGN:	MOIZ	SCALE:	AS SHOWN		
DRAWN:		DATE:	08/09/15		
CHECKED:		DRG. NO.:			
APPROVED:	JMD	GEN-HITECH-024	REV. : A		

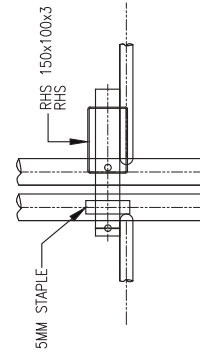
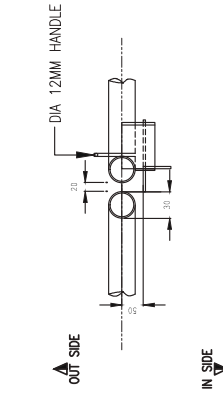
GATES

NOTES
1. ALL DIMENSIONS ARE IN MILLIMETERS UNLESS OTHERWISE NOTED.

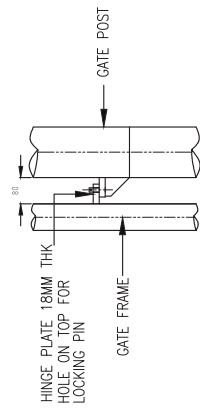


TYPICAL DOUBLE AND SINGLE LEAF GATE

N.T.S



ELEVATION
LOCKING (DOUBLE LEAF GATE)



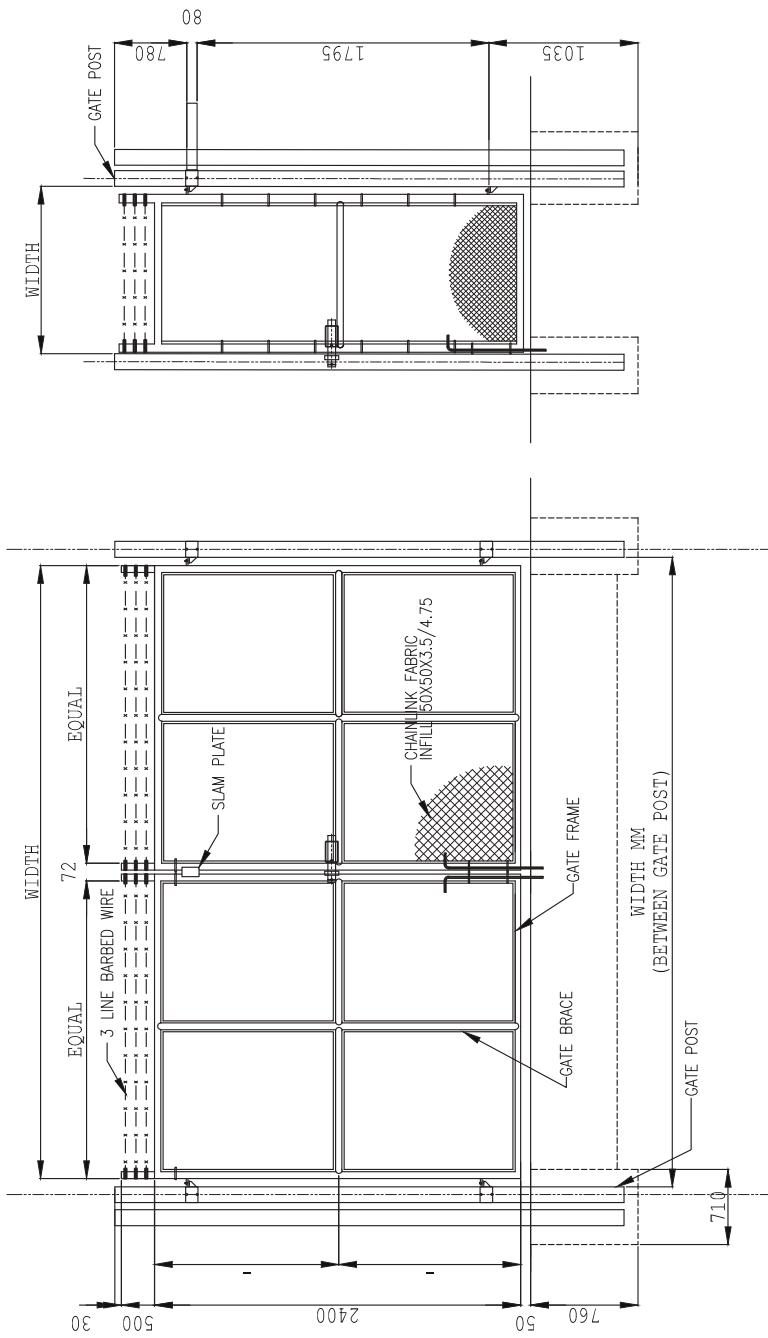
ELEVATION
LOCKING (DOUBLE LEAF GATE)

08/09/15	A	REV NO.	REV ISSUE REASONS	BY
MANUFACTURER:  FAX 20 4419 TEL 01 5308072 0655015795 2ND INDUSTRIAL ZONE AL-KHARJ ROAD RIYADH sales@hitech-ksa.com				
TITLE: GATE				
DESIGN: MOJZ	SCALE: AS SHOWN			
DRAWN: DATE: 08/09/15				
CHECKED: DRC. NO :				
APPROVED: JMD	GEN-HITECH-025	REV :	A	

GATES

NOTES

1. ALL DIMENSIONS ARE IN MILLIMETERS UNLESS OTHERWISE NOTED.



TYP. ELEVATION BOUBLE GATE AND SINGLE GATE

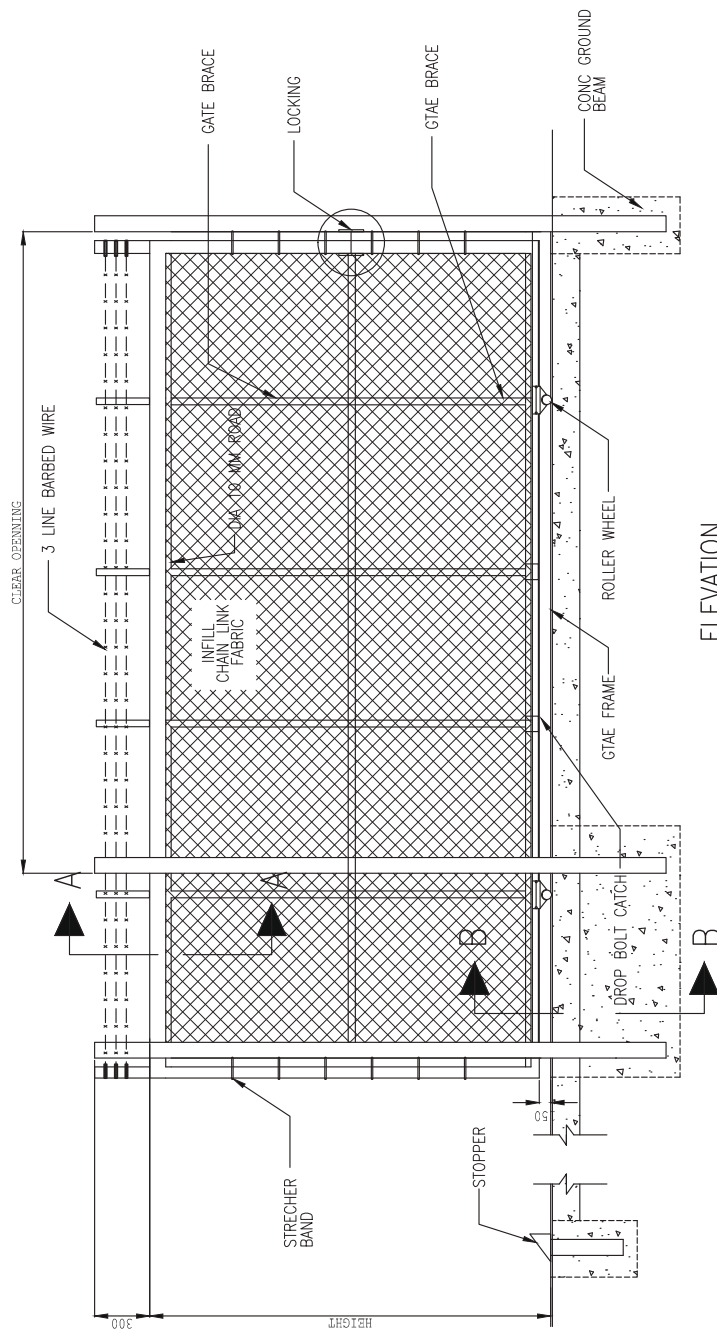
N.T.S

08/09/15	A	FRST ISSUE	BY
DATE	REV NO.	REVISIONS	
<p>MANUFACTURER:</p>  <p> FAX 20 4419 TEL 01 5309072 065015795 2ND INDUSTRIAL ZONE AL-KHARJ ROAD RIYADH saite@hitech-ksa.com </p>			
<p>TITLE: GATE</p>			
DESIGN:	MOIZ	SCALE:	AS SHOWN
DRAWN:	DATE:	08/09/15	
CHECKED:	DRG. NO.:		REV.:
APPROVED:	JND	GEN-HITECH-026	A

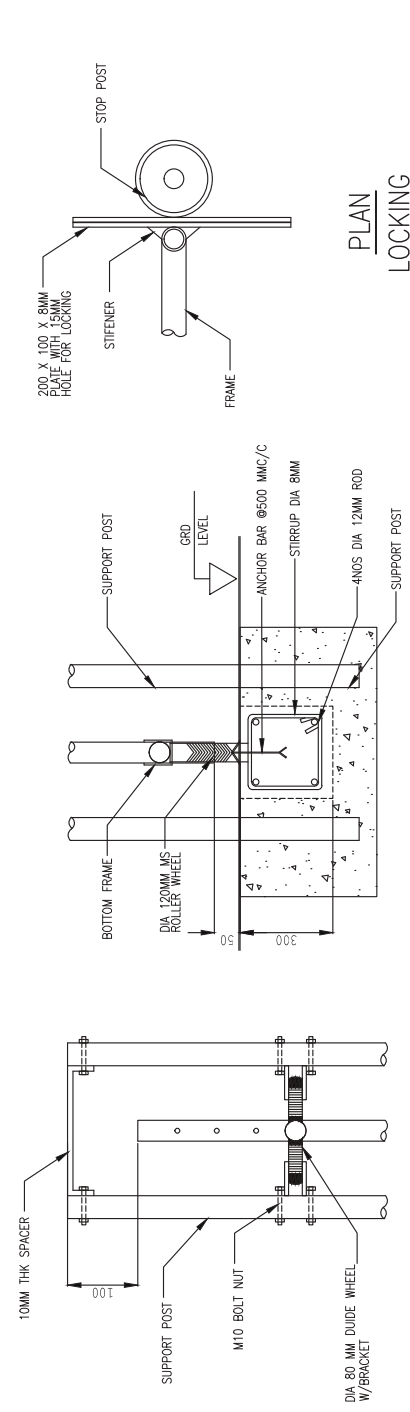
GATES

NOTES

1. ALL DIMENSIONS ARE IN MILLIMETERS UNLESS OTHERWISE NOTED.



ELEVATION FROM OUT SIDE
LOCKING



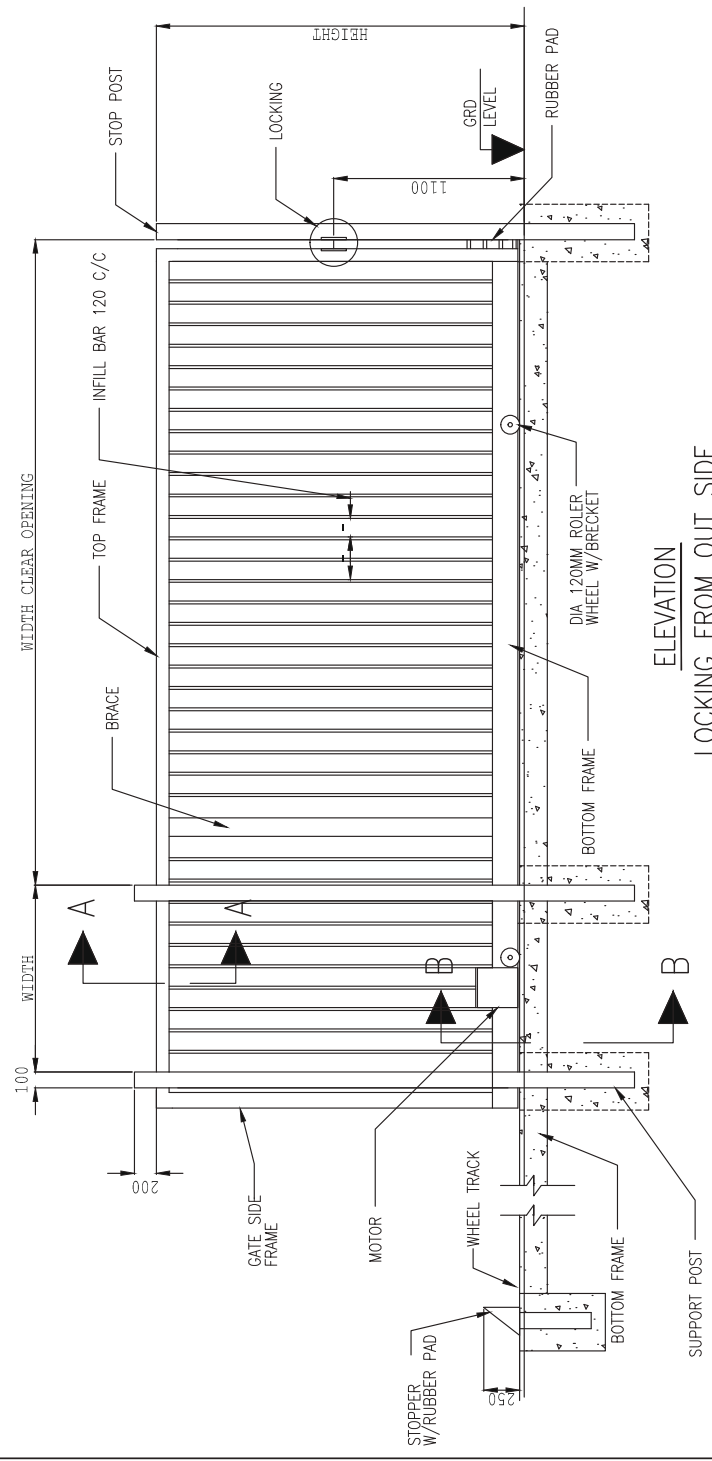
DATE	08/09/15	REV. NO.	A	PRP. ISSUE	
MANUFACTURER:					
MANUFACTURER: Hi-TECH INDUSTRIES FAX: 29 4419 TEL: 01 5398972, 055501595 2ND INDUSTRIAL ZONE AL-KHARJ ROAD RIYADH sales@hitech-ksa.com					
TITLE:	GATE				
DESIGN:	MOJZ	SCALE:	AS SHOWN		
DRAWN:		DATE:	08/09/15		
CHECKED:		DRG. NO.:			
APPROVED:	JND	GEN-HITECH-027	REV.:	A	

مراقبة على الدخول والخروج
مصدات أمنية ضد الإرهاب
حواجز أفقية تعمل يدويا
حواجز أفقية تعمل باتيار الكهربائي

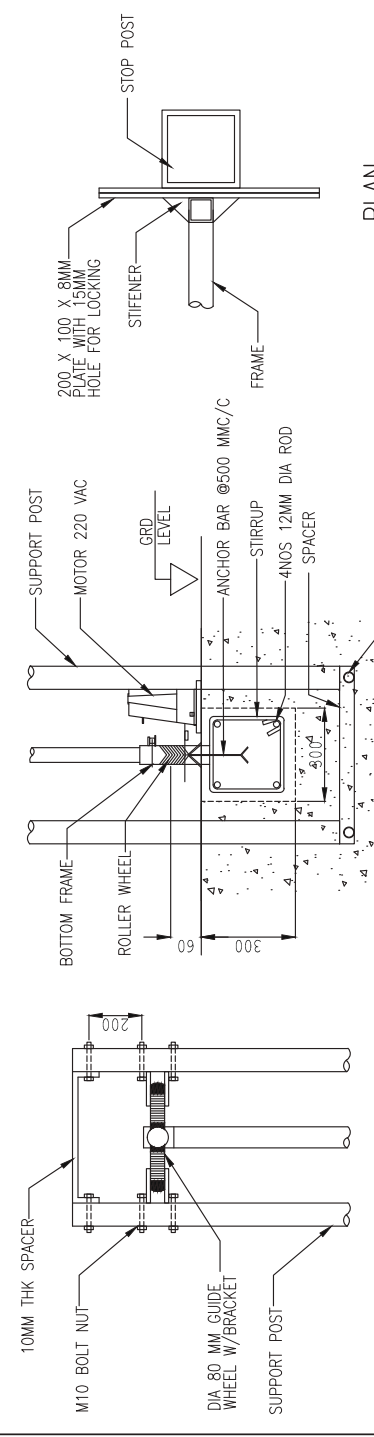
ACCESS CONTROL
ANTI - TERRORIST ROAD BLOCKERS
SHARK JAW BARRIER
MANUALLY OPERATED BOOM BARRIER
ELECTRICALLY OPERATED BOOM BARRIER

ACCESS Control - Model

NOTES
1. ALL DIMENSIONS ARE IN MILLIMETERS UNLESS OTHERWISE NOTED.



ELEVATION
LOCKING FROM OUT SIDE



PLAN
LOCKING

SECTION BB

SECTION AA

DATE	REV. NO.	FIRST ISSUE	BY
08/09/15	A		
MANUFACTURER  2ND INDUSTRIAL ZONE AL-KHARJ ROAD RIYADH TEL: 011-2680072, 0655015795 SALES@HITTECH.COM			
TITLE: ACCESS CONTROL			
DESIGN: MOIZ	SCALE: AS SHOWN		
DRAWN: _____	DATE: 08/09/15		
CHECKED: _____	DRG. NO: _____	REV: _____	A
APPROVED: JD	GEN-HITECH-028		

Muhammed javaid Iqbal
General Manager
Mob: +966 555015795
E-mail: javaid@nartel-ksa.com

Raza H. Choudhry
Deputy General Manager
Mob: +966 555015794
E-mail: raza@nartel-ksa.com

Head Office : +966 11 2064979
Show room : +966 11 2080072
Tel. : +966 11 4748635
Fax : +966 11 2914419
E-mail : info@nartel-ksa.com
P.O.Box 32575 Riyadh 11371
Co-ordinate N: 245201, E: 46.9413
www.hitechfence.com

Abdul - Ghany
Production Manager
Mob: +966 504311333
E-mail: ghany@nartel-ksa.com

Sher Muhammad
Sales & Cost Coordinator
Mob: +966 555015793
E-mail: sales@nartel-ksa.com