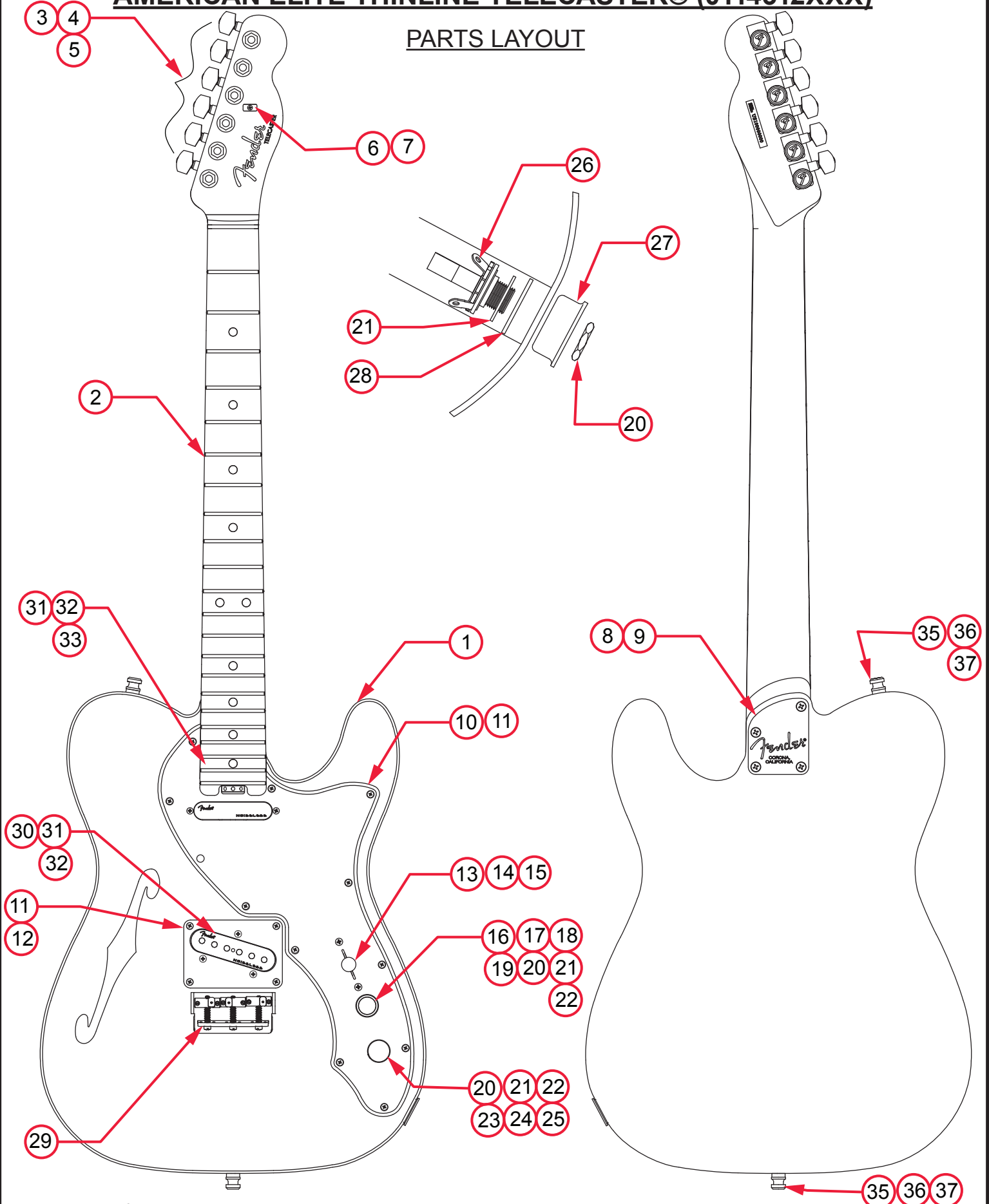


# AMERICAN ELITE THINLINE TELECASTER® (0114312XXX)

## PARTS LAYOUT



# AMERICAN ELITE THINLINE TELECASTER® (0114312XXX)

## PARTS LIST

REF#	DESCRIPTION	PART NUMBER
1	BODY AM ELITE TELE WHT BINDING 3TSB	7709124500
1	BODY AM ELITE TELE BROWN SHELL BINDING NAT	7708469521
1	BODY AM ELITE TELE WHT BINDING MIB	7708468562
2	NECK ASSY AM ELITE TELE MPL	7708462000
3	KEY LOCKING 1,2,3 POLISHED CHROME EA	0073114000
4	BUSHING KEY SET	0058820049
5	WASHER KEY SET	0053106049
6	STRING TREE AM ELITE GUITAR CHROME	7708381000
7	SCREW SMA 2 X 9/16 FHP NICKEL	0051621000
8	NECK PLATE GUITAR DELUXE CHROME ALUM RH NO HOLE	7708496000
9	SCREW SMA 8 X 1-3/4 OHP NICKEL	0015636049
10	PICKGUARD AM ELITE TELE THINLINE AGED WHITE PEARL	7708271000
10	PICKGUARD AM ELITE TELE BROWN SHELL	7708228000
11	SCREW SMAB 4 X 1/2 ONP NICKEL	0015578049
12	BEZEL BRIDGE AM ELITE TELE THINLINE CHROME	7708330000
13	3 WAY LEVER SWITCH	0992041000
14	SWITCH KNOB VINT TELE	0994936000
15	SCREW 6-32 X 5/8 RHP NICKEL	0994925000
16	SW KNOB TELE/P-BASS CHROME	0059272000
17	SW CAP TELE/P-BASS CHROME	0059270000
*18	COUPLING SLEEVE SOSH NYL	0059278000
*19	SW/POT ASSY S-1 250K SOSH	0078979000
*20	NUT HEX 3/8-32 X 3/32 TK NI	0016352049
*21	WASHER LOCK INTL 3/8 X .687	0016436049
*22	SCREW SET 8-32 X 3/16	9949220000
23	KNOB CONTROL ALUM CHROME	0095799000
*24	CONTROL 250K 10% TAPER NO LOAD SOSH	0078782000
*25	CAPACITOR MPF RDL .022µF 250V	0024832049
26	JACK PHONE OPEN CIRUIT 11	0021956049
27	JACK FERRULE STD TELE CHROME	0021452000
28	RETAINER JACK NI PLT TELE	0010355069

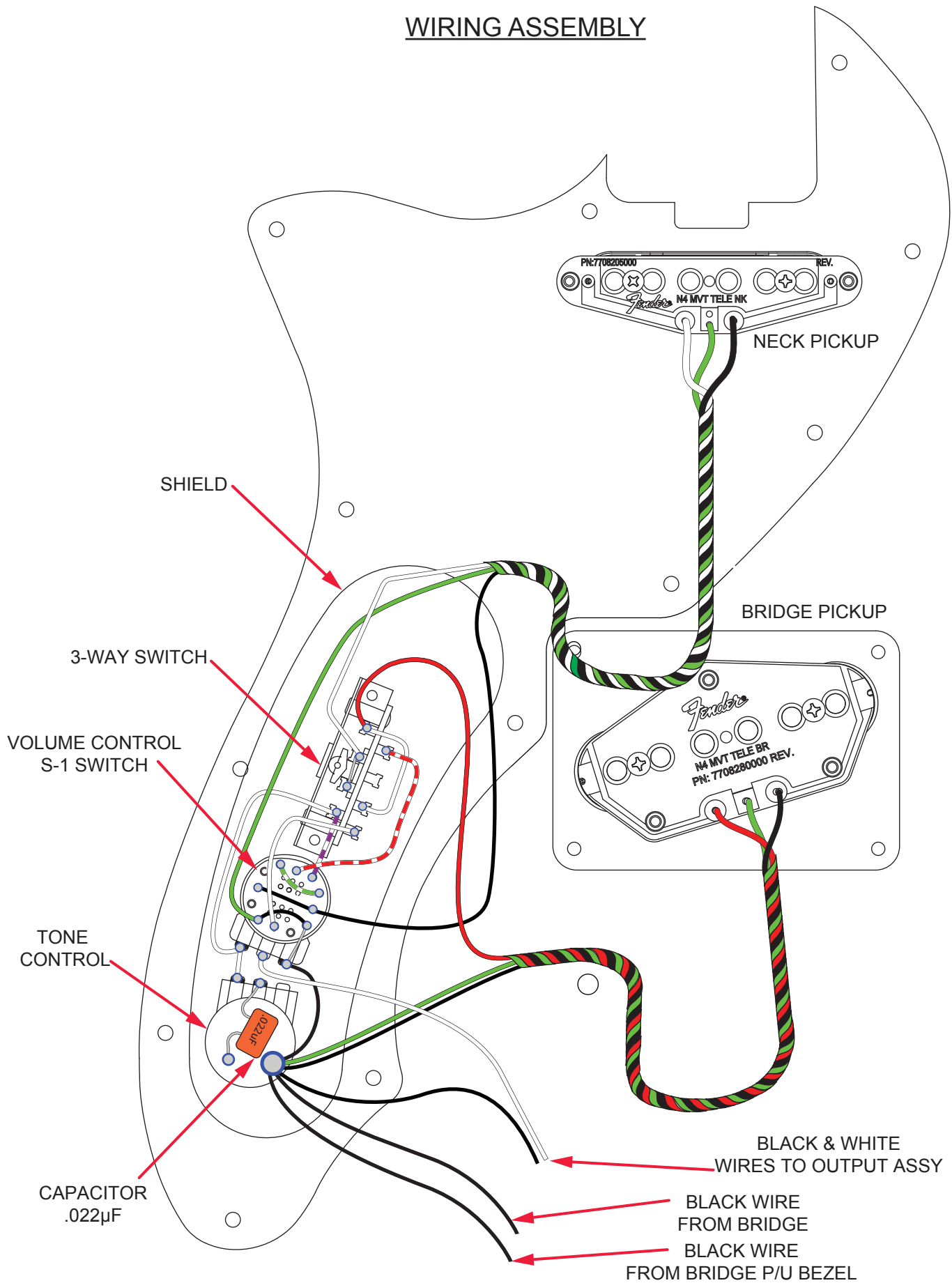
\*= NOT PICTURED IN DIAGRAM





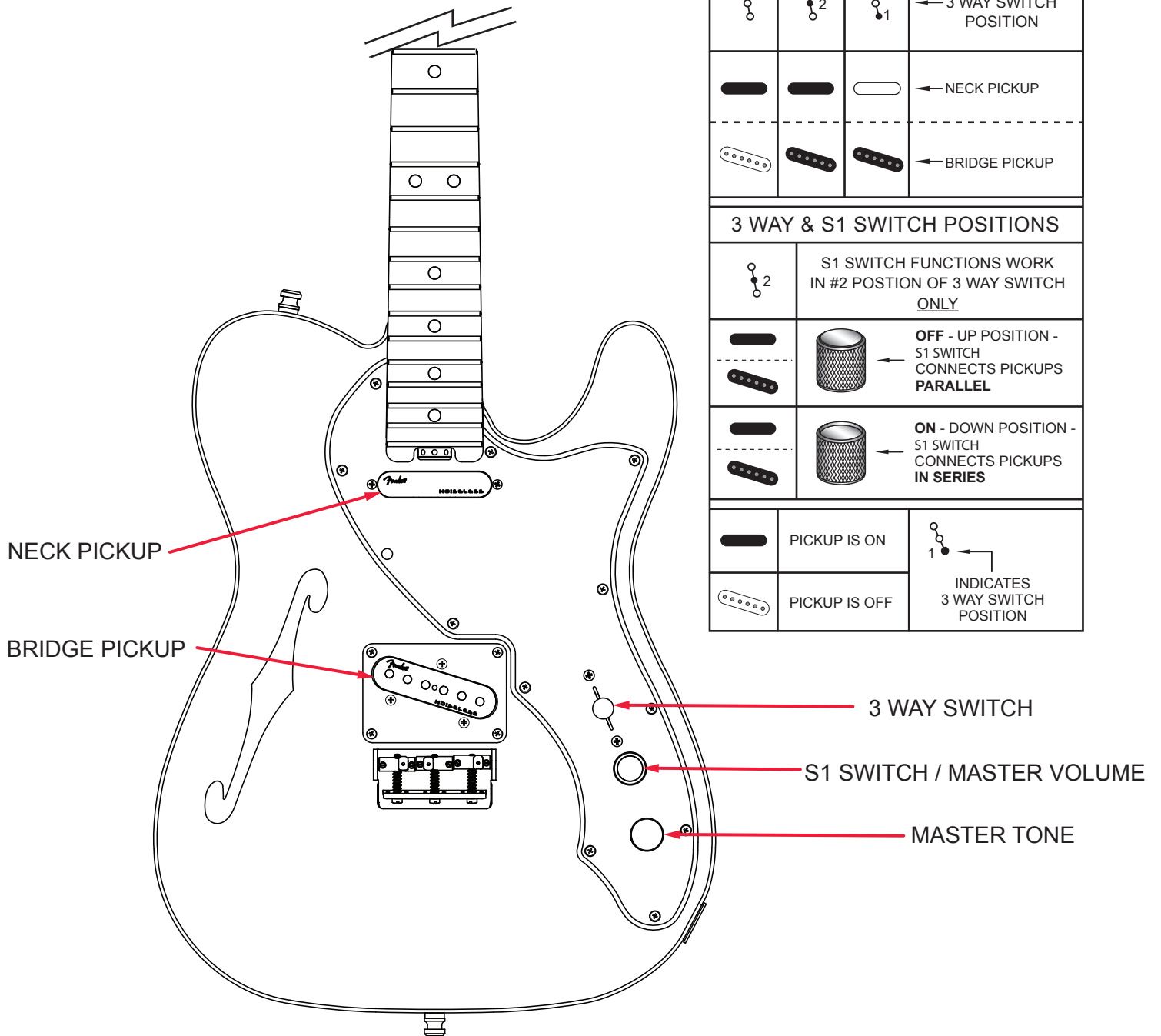
# AMERICAN ELITE THINLINE TELECASTER® (0114312XXX)

## WIRING ASSEMBLY



# AMERICAN ELITE THINLINE TELECASTER® (0114312XXX)

## SWITCH AND CONTROL FUNCTION



NECK PICKUP

BRIDGE PICKUP

3 WAY SWITCH

S1 SWITCH / MASTER VOLUME

MASTER TONE

3 WAY SWITCH POSITIONS			
			← 3 WAY SWITCH POSITION
			← NECK PICKUP
			← BRIDGE PICKUP

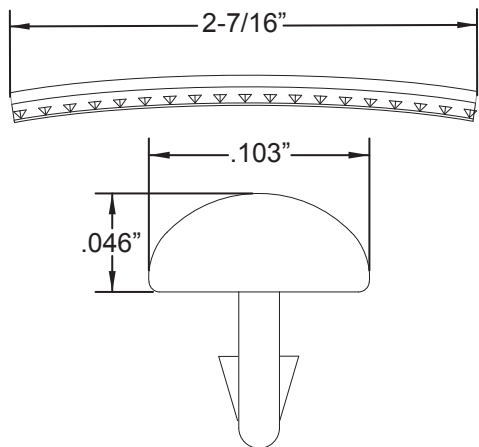
3 WAY & S1 SWITCH POSITIONS	
	S1 SWITCH FUNCTIONS WORK IN #2 POSITION OF 3 WAY SWITCH <u>ONLY</u>
	OFF - UP POSITION - S1 SWITCH CONNECTS PICKUPS PARALLEL
	ON - DOWN POSITION - S1 SWITCH CONNECTS PICKUPS IN SERIES

	PICKUP IS ON	← INDICATES 3 WAY SWITCH POSITION
	PICKUP IS OFF	

# AMERICAN ELITE THINLINE TELECASTER® (0114312XXX)

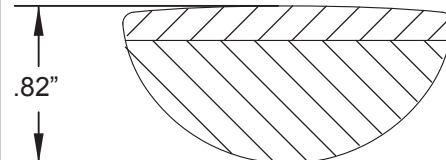
## ADDITIONAL SPECIFICATION DETAIL

**FRET SIZE: MEDIUM JUMBO**  
(FRET DIMENSIONS ARE BEFORE INSTALLATION)

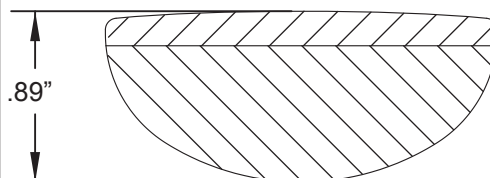


PLEASE NOTE: AS EACH NECK IS SANDED & FINISHED BY HAND, THICKNESS DIMENSIONS MAY VARY SLIGHTLY FROM THOSE SHOWN.

**NECK PROFILE: COMPOUND "C" TO "D"**

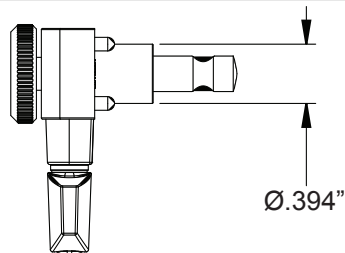


**1ST FRET PROFILE**

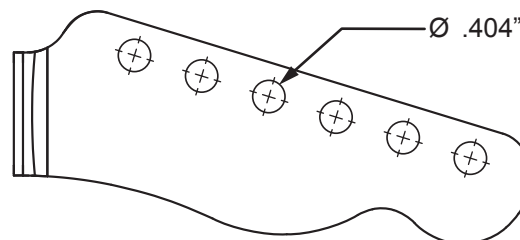


**12TH FRET PROFILE**

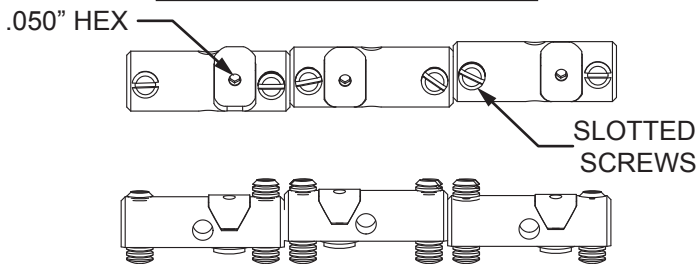
**STAGGERED LOCKING TUNING MACHINES EA: P/N 0073114000**  
**OUTER SHAFT DIAMETER .394"**



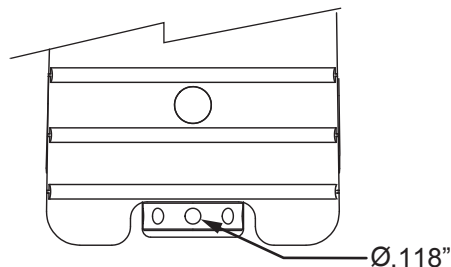
**TUNING MACHINE THRU-HOLE**  
**INNER DIAMETER .404"**



**SADDLE INTONATION ADJUSTMENT WRENCH:**  
**.050 HEX KEY P/N 0018531049**



**TRUSS ROD THUMB WHEEL:**  
**P/N 7708832000 GOLD - P/N 7708809000 BLACK**  
**TRUSS ROD ADJUSTMENT WRENCH:**  
**3/32" HEX KEY P/N 0018622000**



**SADDLE HEIGHT ADJUSTMENT SCREWS SLOTTED:**  
**TALL: P/N 0016105049      SHORT: P/N 0094038000**

**LOGO: AM ELITE TELE DECAL BLACK CHROME**  
**APPLIED UNDER THE FINISH**



### PICKUP SPECIFICATIONS

POSITION	MAGNETS	DC RESISTANCE	POLARITY
NECK	ALNICO 5 UNBEVELED	10.4 - 10.8KΩ	NORTH
MIDDLE	-	-	-
BRIDGE	ALNICO 5 UNBEVELED	10.4 - 10.8KΩ	NORTH