

# Fiery Command WorkStation 6.6

What's New Guide for Fiery Command  
WorkStation Package 6.6



# What's inside:

What's New Guide for Fiery Command WorkStation Package 6.6.....	1
Overview of Fiery Command WorkStation.....	3
About this release.....	3
Fiery Command WorkStation Package 6.6.....	3
Fiery workflow software in Fiery Software Manager.....	4
Specifications for Fiery Command WorkStation Package.....	5
New features overview.....	6
Productivity.....	7
Advanced Search.....	7
More color settings in Quick Access.....	8
Custom imposition for Duplo DC-618 finisher.....	8
Windows installation improvements.....	9
Color & Imaging.....	10
Raster Curve Editor.....	10
Fiery ImageViewer – new features.....	11
Fiery Spot Pro – new features.....	12
EFI ES-3000 support.....	13
Management.....	14
Notifications.....	14
Move To.....	14
Hot Folders restore with paths.....	14
Job Log improvements.....	15
Connection.....	16
Easily connect to EFI IQ.....	16
Adobe Acrobat DC subscription support.....	16
Modified or removed functionality.....	18
Additional resources.....	19

## EFI fuels success.

We develop breakthrough technologies for the manufacturing of signage, packaging, textiles, ceramic tiles, and personalized documents, with a wide range of printers, inks, digital front ends, and a comprehensive business and production workflow suite that transforms and streamlines the entire production process, increasing your competitiveness and boosting productivity. Visit [www.efi.com](http://www.efi.com) for more information.



Nothing herein should be construed as a warranty in addition to the express warranty statement provided with EFI products and services.

The APSS logo, AutoCal, Auto-Count, Balance, BESTColor, BioVu, BioWare, ColorPASS, Colorproof, ColorWise, Command WorkStation, CopyNet, Cretachrom, Cretaprint, the Cretaprint logo, Cretaprinter, Cretaroller, Digital StoreFront, DocBuilder, DocBuilder Pro, DockNet, DocStream, DSFdesign Studio, Dynamic Wedge, EDOX, EFI, the EFI logo, Electronics For Imaging, Entrac, EPCount, EPPhoto, EPRegister, EPStatus, Estimate, ExpressPay, FabriVu, Fast-4, Fiery, the Fiery logo, Fiery Driven, the Fiery Driven logo, Fiery JobFlow, Fiery JobMaster, Fiery Link, Fiery Navigator, Fiery Prints, the Fiery Prints logo, Fiery Spark, FreeForm, Hagen, Inkintensity, Inkware, LapNet, Logic, Metrix, MicroPress, MiniNet, Monarch, OneFlow, Pace, Pecas, Pecas Vision, PhotoXposure, PressVu, Printcafe, PrinterSite, PrintFlow, PrintMe, the PrintMe logo, PrintSmith, PrintSmith Site, PrintStream, Print to Win, Prograph, PSI, PSI Flexo, Radius, Remoteproof, RIPchips RIP-While-Print, Screenproof, SendMe, Sincolor, Splash, Spot-On, TrackNet, UltraPress, UltraTex, UltraVu, UV Series 50, VisualCal, VUTEK, the VUTEK logo, and WebTools are trademarks of Electronics For Imaging, Inc. and/or its wholly owned subsidiaries in the U.S. and/or certain other countries.

All other terms and product names may be trademarks or registered trademarks of their respective owners, and are hereby acknowledged.

## Overview of Fieri Command WorkStation

Fieri® Command WorkStation®, the print job management interface for Fieri servers, makes printing more productive and powerful. It centralizes job management, connects to all Fieri servers on the network, and improves productivity. The intuitive interface simplifies job management, regardless of the user's level of experience.

Full cross-platform Apple® macOS® and Microsoft® Windows® support provides a consistent look and feel, plus the same functionality across computing platforms. A fully functional remote connection to a Fieri server provides the same quality results for server administration as with a local connection. Fieri Command WorkStation 6.6 supports Fieri servers running FS150/FS150 Pro and above, and Fieri XF 7 and above.



Download version 6.6 of Command WorkStation at [www.efi.com/CWS](http://www.efi.com/CWS).

High-speed inkjet printer users should contact their printer manufacturer for information on how to upgrade to the latest version of Fieri Command WorkStation available to them.

### About this release

Version 6.6 introduces a wealth of new productivity, management, color & imaging, and connection functions that make Fieri Command WorkStation more efficient than ever before.

### Fieri Command WorkStation Package 6.6

Fieri Command WorkStation 6.6 is part of the Fieri Command WorkStation Package. The download and installation process for this package is handled by the Fieri Software Manager.

The package includes:

#### Fieri Command WorkStation

Centralizes job management by controlling any Fieri Driven™ cutsheet, wide, superwide, or high-speed inkjet printers on the network for improved real-time productivity.

Fieri Command WorkStation Package 6.6 includes the following optional makeready software for cutsheet printer users: Fieri Impose, Fieri Compose, and Fieri JobMaster™; as well as prepress software including: Fieri Graphic Arts Package, Premium Edition, Fieri Graphic Arts Pro Package<sup>1</sup>, Fieri ColorRight Package<sup>1</sup>, Fieri Automation Package<sup>1</sup>, and Fieri Productivity Package.

#### Fieri Hot Folders – cutsheet and high-speed inkjet only

Automates repetitive tasks for job submission processes on cutsheet printers, saving time and reducing print errors with a simple drag-and-drop operation.

<sup>1</sup> Only available in Fieri FS400/FS400 Pro servers.

## Fiery Software Uninstaller – macOS only

Easily removes Fiery applications (Fiery Command WorkStation, Fiery Color Profiler Suite, Fiery Remote Scan, and Fiery Language Package), printers, and associated print drivers/files on macOS clients.

## Fiery workflow software in Fiery Software Manager

In addition to the Command WorkStation Package, the Fiery Software Manager also facilitates the installation of the following Fiery applications:

### Fiery FreeForm Create – cutsheet and high-speed inkjet

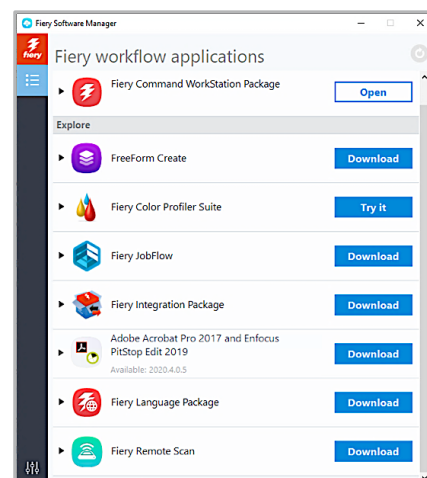
Create personalized jobs using Fiery FreeForm™ VDP technology. Easily add variable elements such as text, images, and barcodes to existing files.

### Fiery Remote Scan – cutsheet only

This application allows users to retrieve scan jobs and automatically synchronize scan mailboxes on supported Fiery servers with a user's desktop computer.

### Fiery JobFlow – Windows only

Fiery JobFlow™ enables prepress workflow automation for streamlined job processing and printing. Start with the free Fiery JobFlow Base to manage workflows including PDF conversion, Fiery Preflight<sup>1</sup>, image enhancement<sup>2</sup>, document imposition<sup>3</sup>; plus flexible options for job submission, archiving, and output. Upgrade to the paid Fiery JobFlow version to add more intelligence with rules-based workflows; advanced preflight and PDF editing, powered by Enfocus PitStop technology; and cloud-based JobFlow approval processes for maximum efficiency.



*Fiery Software Manager*

### Fiery Color Profiler Suite

The Fiery Color Profiler Suite color management software provides integrated color management functions and quality control for print systems. It extends the color capabilities of Fiery Driven printers with the most advanced color management tools available for profile creation, inspection, editing, and color quality assurance. Modular functions ensure color accuracy and consistency across design, print production, and office applications for all types of substrates, while increasing productivity and return on investment.

### Adobe Acrobat Pro 2017 and Enfocus PitStop Edit 2019 kit

To use Fiery Impose, Compose, and JobMaster makeready applications with Adobe® Acrobat® Pro and Enfocus PitStop Edit; you need activated licenses for each installed on the same computer. As of Fiery Command WorkStation version 6.5.0.292 and above, you can use your own software subscription for Adobe Acrobat DC with Fiery makeready applications. Alternatively, you can purchase the Adobe Acrobat Pro 2017 and Enfocus PitStop Edit 2019 software kit from your Fiery reseller or the EFI™ [eStore](#).

### Fiery Integration Package – Windows client only, for cutsheet

The Fiery Integration Package includes Fiery JDF and Fiery API. The Windows application can update both Windows and Linux-based Fiery servers. Users must select "Show additional features" in Fiery Software Manager Preferences to see the Fiery Integration Package and download it.

<sup>1</sup> Requires Fiery Graphic Arts Package, Premium Edition, Fiery Graphic Arts Pro Package, or the Fiery Automation Package

<sup>2</sup> Requires Fiery Image Enhance Visual Editor

<sup>3</sup> Requires Fiery Impose

## Specifications for Fiery Command WorkStation Package

Fiery Command WorkStation 6.6 and Fiery Hot Folders can connect to:

**Fiery servers running Fiery system software:**

- FS150/FS150 Pro, FS200/FS200 Pro, FS300/FS300 Pro, FS350/350 Pro, and FS400/FS400 Pro
- Fiery XF 7 and above

For client computers, the requirements to install Fiery Command WorkStation and Fiery Hot Folders are:

**macOS clients:**

- macOS 10.14 and newer
- 4 GB of RAM or more recommended
- 7 GB of available hard drive space
- Minimum display resolution:
  - For cutsheet users: 1280 x 1024
  - For wide and superwide users: 1600 x 900

**Windows clients:**

- Microsoft Windows 10, 64-bit, and newer
- Microsoft Windows Server 2016 – 64-bit
- Microsoft Windows Server 2019
- Intel® Core™ i3 processor or above
- 4 GB or more of RAM
- 16 GB of available hard drive space
- Minimum display resolution:
  - For cutsheet users: 1280 x 1024
  - For wide and superwide users: 1600 x 900

**To connect to earlier Fiery system software versions, users should install Fiery Command WorkStation 5.8 (for Fiery System 9) or 6.4 (for Fiery System 10) or 6.5 (for FS100/100 Pro). Find out how to downgrade from version 6.x to version 5.8 at [fiery.efi.com/cws58-reinstall-help](http://fiery.efi.com/cws58-reinstall-help).**

**Fiery Command WorkStation 6.6 can connect to a Fiery Central 2.9 server. Contact [FieryCentralSupport@efi.com](mailto:FieryCentralSupport@efi.com) for further information.**

## New features overview

Continuing the tradition of delivering new value to Fiery users, version 6.6 delivers a range of new features in all Fiery innovation areas including productivity, color & imaging, management, and connection.

New features in this release:

- Include quicker ways to find jobs and faster ways to set files up for print
- Deliver more tools for late-stage color editing and more flexible ways to work with spot colors
- Provide convenient functions to manage jobs more efficiently and servers more effectively
- Offer faster access to EFI tools and services plus better connections to external applications

New features in Fiery Command WorkStation Package 6.6

Productivity	Color & Imaging	Management	Connection
<ul style="list-style-type: none"> <li>– <b>Advanced Search*</b></li> <li>– More color settings in Quick Access</li> <li>– Custom imposition for Duplo DC-618 finisher</li> <li>– <b>Windows installation enhancements*</b></li> </ul>	<ul style="list-style-type: none"> <li>– Raster Curve Editor</li> <li>– Fiery ImageViewer<sup>1</sup> <ul style="list-style-type: none"> <li>– Mirror preview</li> <li>– Global curve adjust</li> </ul> </li> <li>– Fiery Spot Pro<sup>2</sup> <ul style="list-style-type: none"> <li>– Multi-tasking support</li> <li>– Customizable swatch page</li> </ul> </li> <li>– ES-3000 support</li> </ul>	<ul style="list-style-type: none"> <li>– <b>Notifications*</b></li> <li>– Move To</li> <li>– Hot Folders restore with paths</li> <li>– Job Log improvements</li> <li>– <b>Display original document size**</b></li> </ul>	<ul style="list-style-type: none"> <li>– Easily connect to EFI™ IQ™</li> <li>– Adobe Acrobat DC subscription support</li> </ul>

\* Feature for all users of Fiery Command WorkStation including cutsheet, wide and superwide, and high-speed inkjet. Note that some high-speed inkjet features are printer specific.

\*\* Feature only available for high-speed inkjet printer users. Note that some high-speed inkjet features are printer specific.

Note: Features vary by print engine model. Please refer to the individual product datasheet or feature matrix to find out exactly which features are available.

<sup>1</sup> Available as part of Fiery Graphic Arts Package, Premium Edition, Fiery Graphic Arts Pro Package, Fiery ColorRight Package, and Fiery Productivity Package

<sup>2</sup> Available as part of Fiery Graphic Arts Package, Premium Edition, Fiery Graphic Arts Pro Package, and Fiery ColorRight Package

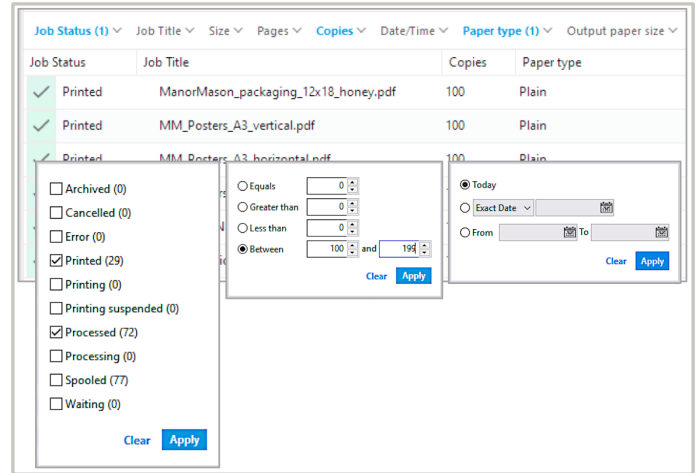
# Productivity

## Advanced Search

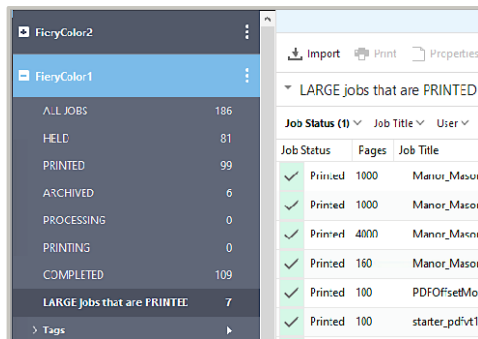
Advanced Search is a powerful search functionality that can locate a job or multiple jobs faster than ever before based on advanced search criteria. This enhanced feature allows users to:

- Search for jobs based on any combination of available filters simultaneously
- Choose multiple selections within a filter (where applicable)
- Choose a data range within a filter (where applicable)
- Select a "Today" option within date filters

Advanced searching is accessed from a new toolbar at the header of the Job List. All currently displayed job columns can be used as filters. Users can customize which filters are shown in the toolbar, and their order in the toolbar, using the More dropdown to help maintain an uncluttered Job Center. The Clear function can be used to reset all applied filters back to the default for the active view.



*A search that combines multiple filters, multiple selections within a filter, a "Today" filter, plus a data range filter*



*An Advanced Search saved as a Custom View on a cutsheet Fiery server*

### For Fiery cutsheet printer users

A new ALL JOBS view displays all jobs for that server regardless of the job status.

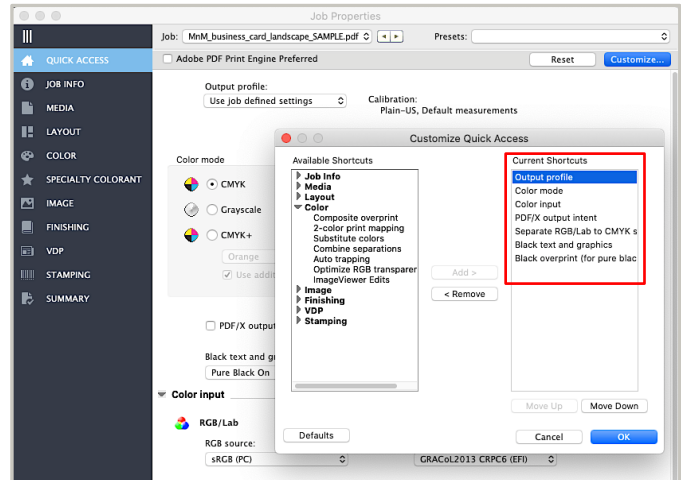
Once filtered, the resulting custom job list can be saved from the ALL JOBS view as a Custom View that's selectable from the Server pane or the Views dropdown.

This enhanced Advanced Search functionality supersedes and replaces the Advanced Search functionality from previous versions of Fiery Command WorkStation.

## More color settings in Quick Access

Users can include additional color settings to the Quick Access view in Job Properties for faster job set up. This pane can now list the below color shortcuts:

- Output profile
- Color mode
- Color input
  - RGB/Lab settings
  - CMYK settings
  - Grayscale settings
  - Spot Color settings
- Color settings
  - PDF/X output intent
  - Separate RGB/Lab to CMYK source
  - Black text and graphics
  - Black overprint



*Additional color setting added to the Quick Access pane*

*Quick Access is available for Fiery servers running cutsheet and high-speed inkjet printers.*

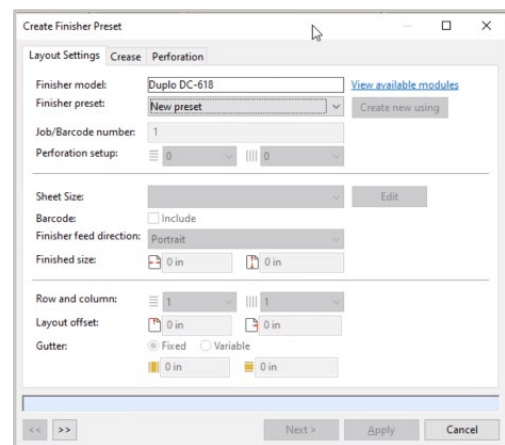
## Custom imposition for Duplo DC-618 finisher – available in 6.6.0.369

Operators can use Fiery Impose to easily set up a custom imposition layout including cut, crease, and perforation finishing marks for a job to be finished on Duplo's DC-618 automatic slit/cutter/creaser.

Fiery Impose can communicate directly with the Duplo DC-618 controller software so that a custom layout with finishing definitions can be verified and stored in the Duplo controller software. When the printed job is fed through the finisher, the Duplo DC-618 will match the printed job with the correct set of finishing instructions. This means that operators can easily create custom layouts with custom finishing settings for new jobs, all from Fiery Impose, and can be confident that jobs with a custom layout will be printed and finished correctly.

This integrated workflow eliminates duplicate setup between the imposition software and the finisher controller software. Operators can apply complex finishing options to custom jobs, free of setup errors and rework.

*Fiery Impose is available for Fiery servers running cutsheet printers.*



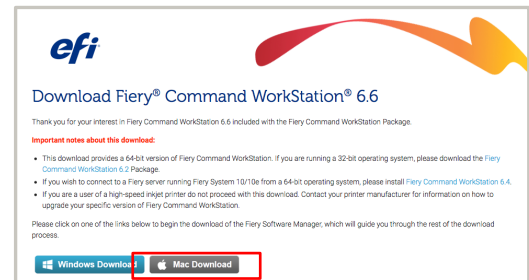
*Use Fiery Impose to create a Duplo finisher preset*



## Windows installation improvements

From version 6.6 onwards, installation times on Microsoft® Windows® platforms are reduced for both server and client installations. This lets users move back to production more quickly after performing Fiery Command WorkStation updates.

More efficient installers for full-version packages result in a Fiery Command WorkStation server installation that's 25% faster, and a client installation improvement of 30-50 seconds faster.



## Color & Imaging

### Raster Curve Editor

Operators can perform late-stage color edits on jobs with Raster Curve Editor\* directly from Job Properties.

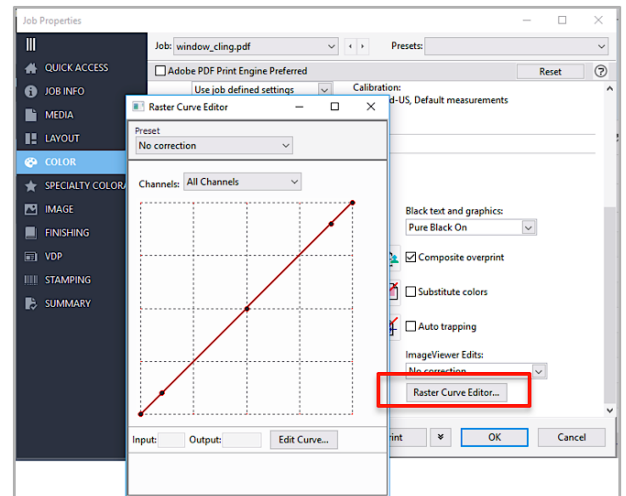
Users can adjust individual color channels, as well as all channels at once. Make curve edits simply by dragging control points, or by editing curve table data numerically in increments as small as 1%.

Custom curves can be saved as presets and applied to future jobs and are synchronized with Fiery ImageViewer\*\* presets.

\* Raster Curve Editor is not available for Fiery A10 server platforms.

\*\* Fiery ImageViewer is available as part of the Fiery Graphic Arts Packages ([Fiery Graphic Arts Package, Premium Edition](#), [Fiery Graphic Arts Pro Package](#), [Fiery ColorRight Package](#), and [Fiery Productivity Package](#)). It provides much more extensive color and image adjustment capabilities, such as a fast, pixel-level preview, the ability to adjust color within a specific region of a page, and the ability to perform color replacements.

*Raster Curve Editor is available for Fiery servers running cutsheet and high-speed inkjet printers.*



*Raster Curve Editor available in Job Properties*

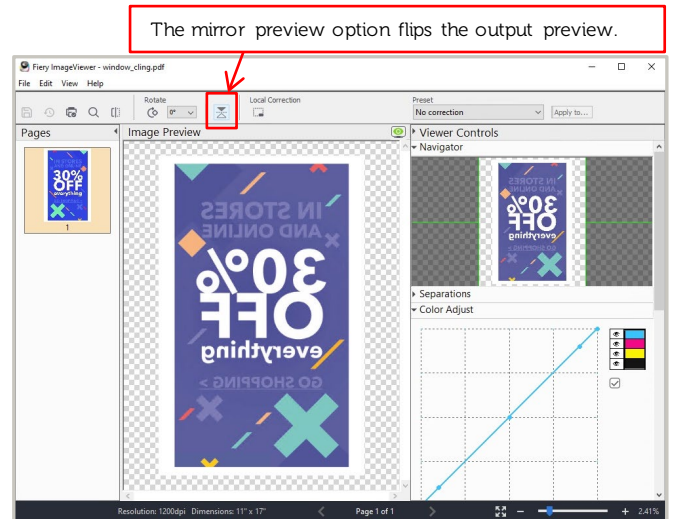
## Fiery ImageViewer – new features

The following new features in Fiery ImageViewer 4.4 help improve the user experience for previewing raster files and making color adjustments.

*IMPORTANT: Specific Fiery option packages are required for the following new features. Please refer to the New Features Overview table for complete details.*

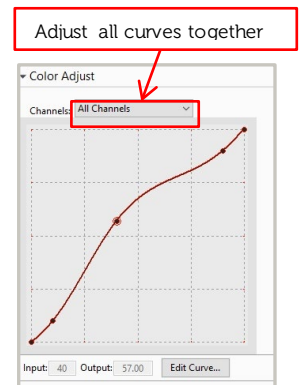
### Mirror preview

See a more accurate raster preview of jobs that output as a mirror image of the original file, such as window clings, t-shirt transfers, or backlit graphics. Mirror preview is also useful for specialty color applications where white toner is printed on top of CMYK. Note that the mirror preview does not actually change the layout of the job, it is simply a preview.



### Global curve adjust

Provides an easier way to make curve adjustments across all separations. For example, use global curve adjust to make midtone, shadow, or highlight curve adjustments.



*Fiery ImageViewer is available for Fiery servers running cutsheet and high-speed inkjet printers.*

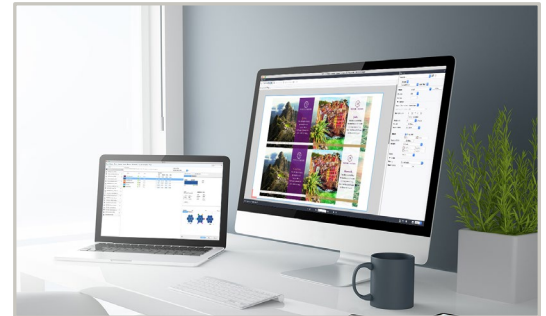
## Fiery Spot Pro – new features

The following new features in Fiery Spot Pro help improve the overall user experience.

*IMPORTANT: Specific Fiery option packages are required for the following new features. Please refer to the New Features Overview table for complete details.*

### Multi-tasking support

It's now easier to edit spot colors in Spot Pro while working with other applications in Fiery Command WorkStation, such as makeready or Job Properties. Switch back and forth between Spot Pro and Command WorkStation without having to close the Spot Pro window. This allows a user to handle urgent spot color needs while continuing work on other tasks.

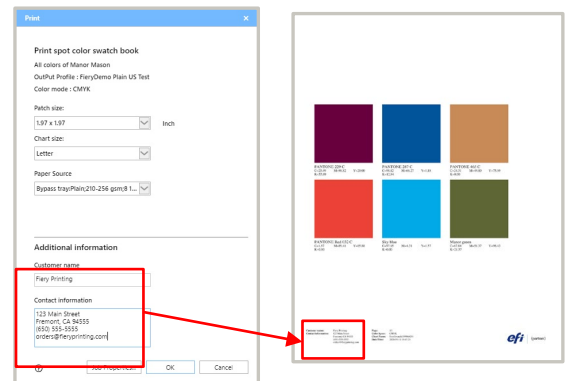


*Work in Fiery Spot Pro and other Fiery Command WorkStation applications simultaneously*

### Customizable switch page

Spot Pro switch pages can now be customized to include contact information. This helps create a more seamless client relationship. Print service providers can choose to include their contact information, or the contact information for their client.

*Fiery Spot Pro is available for Fiery servers running cutsheet and highspeed inkjet printers.*



*Add contact information to Spot Pro swatch pages*

## EFI ES-3000 support

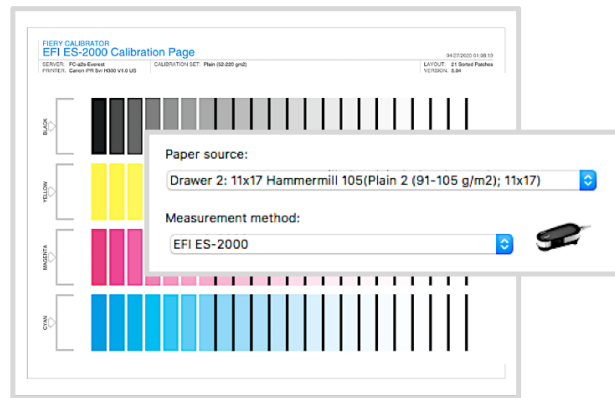
The EFI ES-3000 measurement instrument is supported with Fiery Command WorkStation 6.6 and the latest Fiery software versions. Building on the success of the EFI ES-2000 technology, the ES-3000 supports single scan measurements in modes M1 and M2 (where measurement mode selection is available) – providing faster and more accurate measurement readings.

### Support for Fiery cutsheet printer users

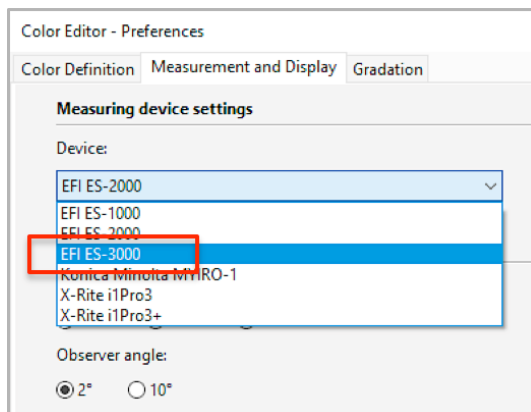
ES-3000 support is available for use with Fiery Calibrator, Fiery Spot Pro, Fiery Spot-On, plus the paper simulation features within Fiery Command WorkStation.

Support for the EFI ES-3000 measurement instrument in Fiery Command WorkStation for existing Fiery servers is through “EFI ES-2000 emulation”. Users should select the “EFI ES-2000” menu entry in the user interface within Fiery Calibrator, Fiery Spot Pro, Fiery Spot-On, and the paper simulation features of Fiery Command WorkStation in order to use the ES-3000 for these functions. Note that the ES-3000 operates with all the benefits of this new measurement device, while at the same time emulating the ES-2000 in terms of instrument compatibility.

Fiery Color Profiler Suite 5.3.1.12 and above has native support for the EFI ES-3000.



*The ES-3000 used in ES-2000 emulation mode*



*The ES-3000 selected in Color Editor in Fiery XF*

### Support for Fiery wide and superwide printer users

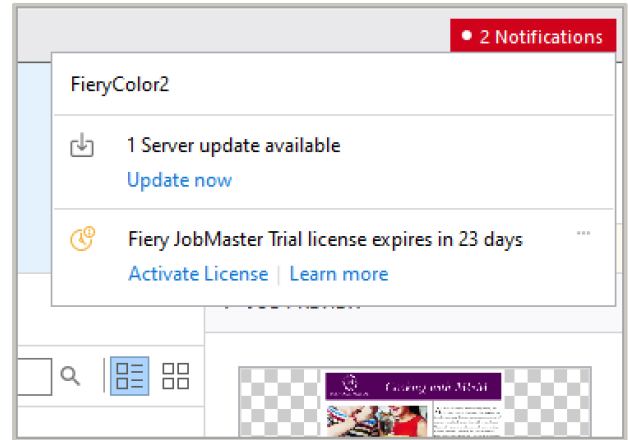
Native support of the ES-3000 is available for users of Fiery proServer and Fiery XF with Command WorkStation 6.6 within Fiery Verify, Server Manager, Job Editor, Color Tools, and Color Editor. The latest versions of Fiery XF and Fiery Color Profiler Suite are required for full support of this instrument.

# Management

## Notifications

Both Fiery server and Fiery software notifications are in one convenient location in Fiery Command WorkStation 6.6 and above. Notification types depend on which kind of Fiery server is connected, plus log-in rights. Server notifications appear at the top right of Job Center, and include:

- Available server update notifications:
  - E.g. Software updates to enable new application use such as EFI IQ
- Software license expiration notifications for:
  - Client-based licenses
    - E.g. For Fiery Impose, Compose, and JobMaster
  - Server-based licenses
    - E.g. For Fiery Graphic Arts Pro Package

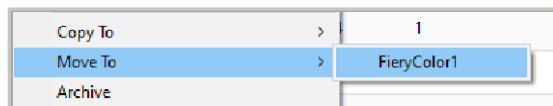


*A Fiery server and Fiery Software notifications*

## Move To, Copy To

Available for Fiery servers running FS350 software and above, users can move jobs from one server to another using the Move To function. With version 6.6, jobs can still be copied to another Fiery server with the Copy To function. Copy To performs the same function as the Send To command in previous versions of Fiery Command WorkStation. Copy To is available for all Fiery server models.

During the copy or move, a status bar at the bottom left in Job Center shows the progress of the task. When managing jobs on Fiery servers running system software earlier than FS350, only the Copy To function is available. With both functions, jobs arrive at the destination server with a Spooled status.



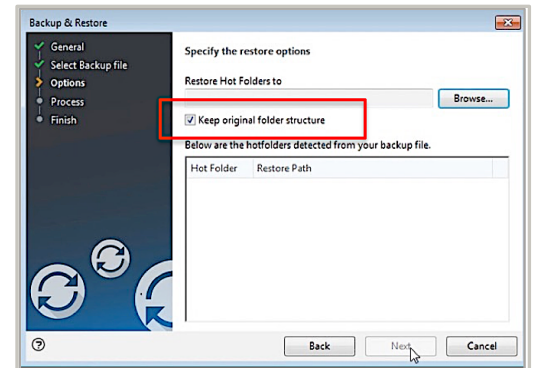
*Moving a job or jobs to another Fiery server*

These two functions are already available when connected to Fiery XF-based servers. However, note that jobs cannot be passed between Fiery cutsheet/high-speed servers to Fiery XF-based servers, but can be copied or moved between cutsheet and high-speed inkjet Fiery servers.

## Hot Folders restore with paths

Fiery Hot Folders can be backed up and restored containing the exact original folder structure. This saves time when restoring to a server because there is no need to recreate the original folder paths.

*Hot Folders are available for Fiery servers running cutsheet and high-speed inkjet printers.*



*Restore hot folders and keep the original folder structure*

## Job Log improvements

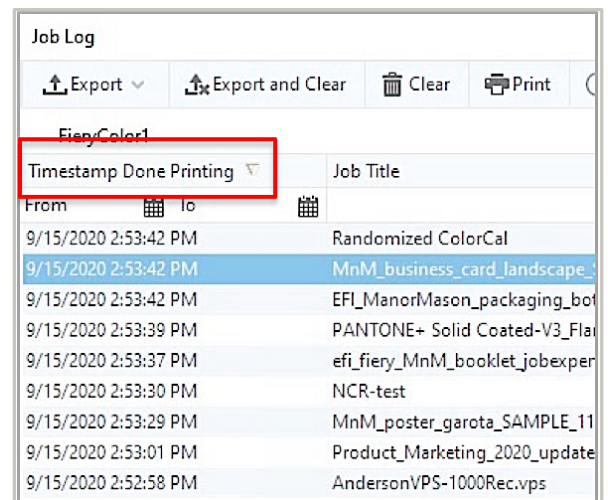
Timestamp Done Printing is now the default order in Job Log with this column appearing at the far left of the Job Log. This is a more logical default order and column position for users.

Job Log	Timestamp	Date/Time	Job Title	Print Status	User	Number Of F	Total Numbe	Total Number	Number Of C	Pages	Page Size	Media Type
1	18/09/2020	18/09/2020	Job Log	Rip Error	Administratrc	0	0	0	0	-1		
3	11/09/2020	11/09/2020	window_clin	OK	Fiery User	0	0	0	0	1		
4	08/09/2020	08/09/2020	efi_fiery_fgs	OK	heatherb	0	0	0	0	2		
5	08/09/2020	08/09/2020	efi_fiery_fgs	OK	heatherb	0	0	0	0	2		
6	08/09/2020	08/09/2020	efi_fiery_fgs	OK	heatherb	0	0	0	0	2		
7	08/09/2020	08/09/2020	efi_fiery_fgs	OK	heatherb	0	0	0	0	2		
8	04/09/2020	04/09/2020	51 Unsorted	OK	Administratrc	1	0	1	1	1	13x19	Plain
9	04/09/2020	04/09/2020	Our New Hoi	OK	Admin	0	0	0	0	1		
10	04/09/2020	04/09/2020	Our New Hoi	OK	Admin	1	0	1	1	1	215.90 mm	Plain
11	04/09/2020	04/09/2020	Our Plain Me	OK	Admin	1	0	1	1	1	8 1/2x11	Plain
12	04/09/2020	04/09/2020	Our Plain Me	OK	Admin	0	0	0	0	1		
13	04/09/2020	04/09/2020	Our Plain Me	OK	Admin	1	0	1	1	1	8 1/2x11	Plain
14	15/09/2020	04/09/2020	Our Plain Me	OK	Admin	1	0	1	1	1	8 1/2x11	Plain

*"Print details" for a job with all columns displayed*

The view, export, and print job log "print details" for an individual job have been expanded to contain all columns displayed within the Job Log.

*Job Log is available for Fiery servers running cutsheet and high-speed inkjet printers.*

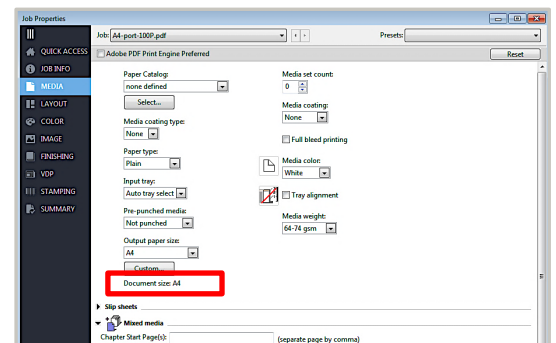


*Default order for the Job Log job list*

## Display original document size

A job's document size is a core setting of a job. It can be confusing and hard for an operator to manage size when other layout and ticketing settings are made. It's important to always be able to compare the job's original document size with the output size. Job Properties now displays the original document size in the media tab, which remains as a reference — even when the output size changes. Easily select "document size" in the dropdown menu to apply it to the substrate size.

*This feature is only available for Fiery servers running high-speed inkjet printers.*



# Connection

## Easily connect to EFI IQ

EFI IQ is an all-new suite of paid and free applications that connect people, processes, and print devices; to enable better, data-driven decisions for print businesses. The suite includes:

### IQ Dashboard (Free)

For a quick overview of today's key production metrics and the current state of printers.

### EFI Insight (Free)

Provides historical trends information to improve future performance and compare performance between devices to increase shop floor productivity.

### EFI Go (Free)

Monitors the status of multiple printers and jobs from a smart phone or tablet.

### EFI ColorGuard (Paid)

For streamlining color verification tasks and tracking color quality over time.

### EFI Manage (Paid)

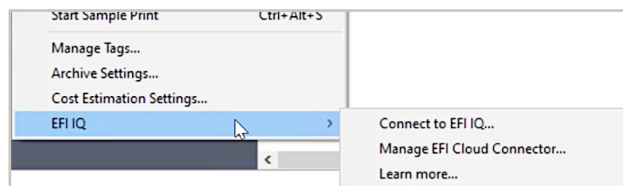
For managing printers by syncing resources, checking compliance, and monitoring device status.



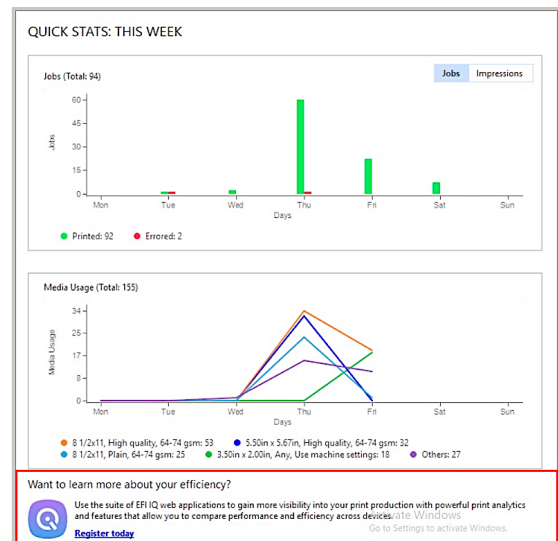
Connecting to EFI IQ is easier than ever before from FieryCommand WorkStation 6.6 with:

- The ability to sign in to, or register for, an EFI IQ account within the QUICK STATS area of Fiery Command WorkStation Home screen
- The option to enable and activate a Fiery server to EFI IQ directly from the Fiery Command WorkStation Server menu

EFI IQ can connect to Fiery servers running cutsheet and selected high-speed inkjet printers.



Onboarding to EFI IQ from the Fiery Server menu



Connecting to EFI IQ from the Home screen



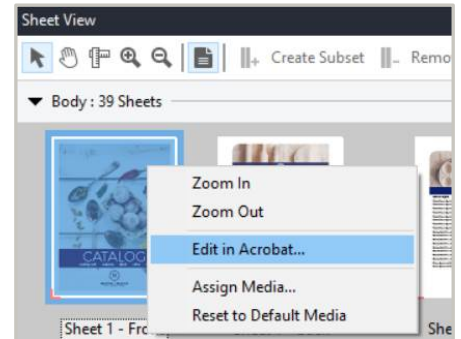
## Adobe Acrobat DC subscription support

Fiery Command WorkStation supports the use of subscriptions of Adobe Acrobat DC installed on a client computer, for use with the “Edit in Acrobat” feature in Fiery Impose, Fiery Compose, and Fiery JobMaster. This allows users to access the latest Acrobat PDF editing capabilities directly from Fiery makeready applications.

Note: To use Acrobat from within Fiery Impose, Fiery Compose, or Fiery JobMaster, there must only be one instance of Acrobat DC installed on the client computer.

You can also purchase an Adobe Acrobat Pro 2017 and Enfocus PitStop Edit 2019 Kit from your Fiery reseller or the EFI eStore.

*Fiery Impose, Fiery Compose, and Fiery JobMaster are available for Fiery servers running cutsheet printers.*



*“Edit in Acrobat” feature in Fiery makeready products*

## Modified or removed functionality

### End of support for Fiery Impose and Compose dongles

Fiery Command WorkStation version 6.6 will no longer support dongle-based licenses for Fiery Impose, Fiery Compose, or Fiery SeeSequence Suite (Fiery Impose-Compose). Command WorkStation 6.6 will only support License Activation Code (LAC) software-based licenses. Users will need to replace the dongle-based license with an LAC license to continue using these Fiery products with Fiery Command WorkStation 6.6 and take advantage of the latest features.

#### Dongle trade-in program

For a limited time, there is a dongle trade-in program to help users switch over to the LAC software-based licensing. The first step is to visit [efi.com/FieryDongleTradeIn](http://efi.com/FieryDongleTradeIn) and fill out a request form. After, an email will be sent within 3 business days with a 45-day term license to use during processing. The product dongle will need to be mailed to an EFI return location within 10 days of receiving the temporary product license. Once the dongle is received and verified, an email will be sent with a 1-year term license. This offer is only available until March 31, 2021.

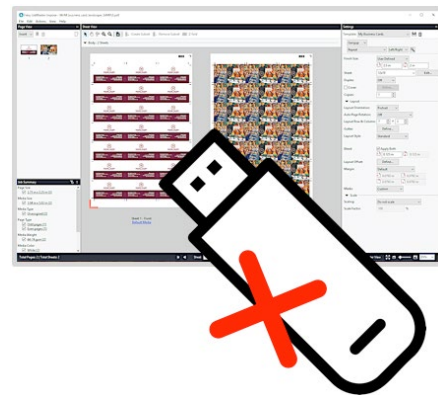
Before the dongle is traded in, it is important to verify that the Fiery server supports Fiery Command WorkStation 6.6 (check the [supported printers list](#)).

#### Keep the dongle-based license with previous versions of Command WorkStation

If a user wants to continue using their Fiery product without replacing the dongle, they can do so with [Fiery Command WorkStation 6.5 or previous versions](#).

#### Fiery JDF 1.8

Additionally, Fiery JDF version 1.8 only supports Impose LAC software-based licenses and will no longer support dongle-based Impose licenses connected to the Fiery server. Fiery JDF 1.8 will apply the Impose watermark if a job requires Fiery imposition and an Impose dongle is attached to the server. If a user wants to continue to use their Fiery product without replacing the dongle, they can do so with Fiery JDF version 1.7.

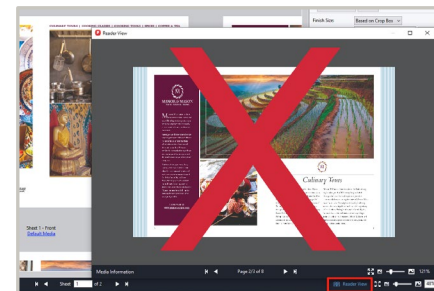


### Removal of Reader View in Fiery makeready software

Reader View is no longer available in Fiery Impose, Fiery Compose, Fiery JobMaster, or Fiery Preview. Reader View listed media information by page and displayed a visual representation of the finished job. It used a technology deprecated in macOS 11.

### Fiery ImageViewer 4 remote desktop support

Fiery ImageViewer 4 can now be used when connecting to a Fiery server through remote desktop, which can be helpful for support situations. In previous versions of Fiery Command WorkStation, ImageViewer would always revert to ImageViewer 3 in remote desktop sessions.



## Additional resources

Use this list of sales, training, and technical resources to help you broaden your knowledge of Fiery Command WorkStation, plus related products and applications.

Fiery Command WorkStation main webpage	<a href="http://efi.com/cws">efi.com/cws</a>
Fiery Command WorkStation download	<a href="http://fiery.efi.com/cws">fiery.efi.com/cws</a>
Fiery Impose 30-day free trial request	<a href="http://efi.com/impose">efi.com/impose</a>
Fiery JobMaster 30-day free trial request	<a href="http://efi.com/jobmaster">efi.com/jobmaster</a>
Fiery Compose 30-day free trial request	<a href="http://efi.com/compose">efi.com/compose</a>
Fiery Graphic Arts Package, Premium Edition 30-day free trial request (FS200 Pro/FS300 Pro/FS350 Pro external Fiery servers)	<a href="http://efi.com/gappe">efi.com/gappe</a>
Fiery Graphic Arts Pro Package 30-day free trial request (FS400 Pro and above external Fiery servers)	<a href="http://efi.com/gapro">efi.com/gapro</a>
Fiery ColorRight Package 30-day free trial request (FS400 Pro and above embedded Fiery servers)	<a href="http://efi.com/colorright">efi.com/colorright</a>
Fiery Automation Package 30-day free trial request (FS400 Pro and above embedded Fiery servers)	<a href="http://efi.com/fieryautomation">efi.com/fieryautomation</a>
Fiery JobFlow 30-day free trial request	<a href="http://efi.com/jobflow">efi.com/jobflow</a>
Fiery makeready solutions comparison (Fiery Impose, Compose, and JobMaster)	<a href="http://fiery.efi.com/makeready-comparison">fiery.efi.com/makeready-comparison</a>
Fiery FreeForm Kit download and FreeForm Create demo files	<a href="http://efi.com/freeformcreate">efi.com/freeformcreate</a>
Training resources at Learning@EFI	<a href="http://learning.efi.com">learning.efi.com</a>
EFI Communities	<a href="https://communities.efi.com/s/">https://communities.efi.com/s/</a>
Fiery Command WorkStation Help documentation	<a href="http://help.efi.com/cwspackage/index.html">http://help.efi.com/cwspackage/index.html</a>