

Figure S1: Clan distribution of DNA-binding families

Normalized propensities for occurrence of DNA-binding families in each of the 96 Pfam clans.

(CL0477,CL0073,CL0407,CL0481,CL0324,CL0081,CL0166,CL0410,CL0494,CL0388,CL0242,CL0018,CL0078,CL0469,CL0057,CL0060,CL0123,CL0405,CL0357,CL0359,CL0415,CL0274,CL0382,CL0306,CL0198,CL0446,CL0398,CL0189,CL0012,CL0243,CL0464,CL0156,CL0194,CL0441,CL0219,CL0263,CL0169,CL0361,CL0174,CL0371,CL0114,CL0426,CL0140,CL0438,CL0132,CL0304,CL0303,CL0248,CL0153,CL0021,CL0236,CL0167,CL0175,CL0229,CL0049,CL0349,CL0027,CL0144,CL0023,CL0526,CL0006,CL0366,CL0363,CL0368,CL0475,CL0319,CL0085,CL0362,CL0163,CL0413,CL0329,CL0065,CL0136,CL0280,CL0034,CL0109,CL0310,CL0479,CL0214,CL0128,CL0070,CL0247,CL0246,CL0029,CL0055,CL0032,CL0186,CL0266,CL0268,CL0051,CL0063,CL0039,CL0020,CL0172,CL0125,CL0159)

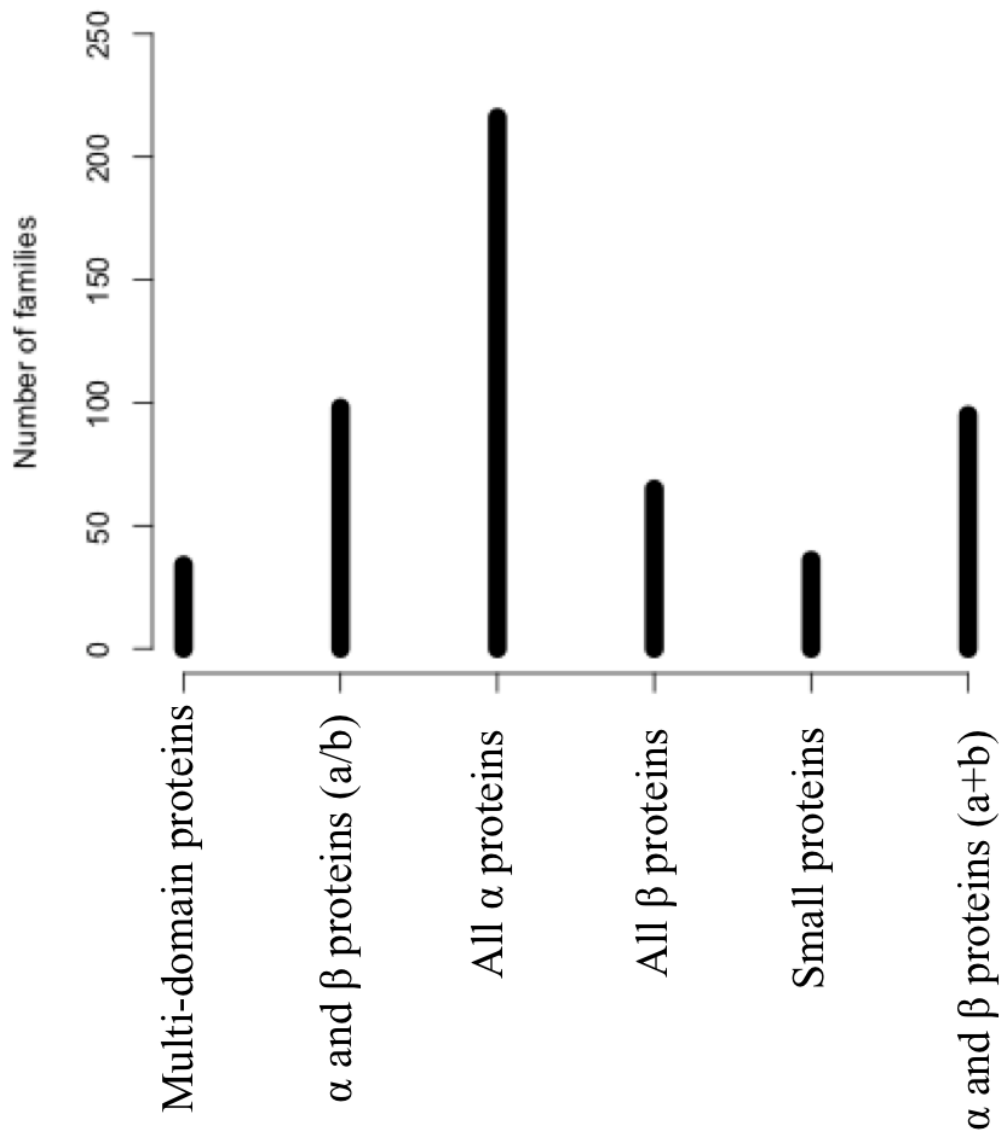


Figure S2: Distribution of DBP families in SCOP classes.

The DNA-binding families were mapped to structures using SCOP database. The all-helical class was observed to be most populated.

Table S1: List of archaeal families with their functions.

Pfam ID	Pfam Name	Function
PF02294	7kD_DNA_binding	DNA stability
PF07381	DUF1495	Putative transcription regulator
PF13010	pRN1_helical	Primase
PF11520	Cren7	DNA stability and packaging
PF09061	Stirrup	Endonuclease
PF12136	RNA_pol_Rpo13	DNA-dependent RNA polymerase
PF09062	Endonuc_subdom	Endonuclease
PF09658	Cas_Csx9	DNA repair, chromosomal rearrangement
PF09153	DUF1938	DNA stability

Table S2: List of viral families with their descriptions.

Pfam ID	Pfam Name	Pfam Description
PF03396	Pox_RNA_pol_35	Poxvirus DNA-directed RNA polymerase, 35 kD subunit
PF09266	VirDNA-topo-I_N	Viral DNA topoisomerase I, N-terminal
PF02282	Herpes_UL42	DNA polymerase processivity factor (UL42)
PF08724	Rep_N	Rep protein catalytic domain like
PF02703	Adeno_E1A	Early E1A protein
PF06284	Cytomega_UL84	Cytomegalovirus UL84 protein
PF04767	Pox_F17	DNA-binding 11 kDa phosphoprotein
PF05435	Phi-29_GP3	Phi-29 DNA terminal protein GP3
PF09198	T4-Gluco-transf	Bacteriophage T4 beta-glucosyltransferase
PF01606	Arteri_env	Arterivirus envelope protein
PF00844	Gemini_coat	Geminivirus coat protein/nuclear export factor BR1 family
PF05941	Chordopox_A20R	Chordopoxvirus A20R protein
PF03728	Viral_DNA_Zn_bi	Viral DNA-binding protein, zinc binding domain
PF04523	Herpes_U30	Herpes virus tegument protein U30
PF11729	Capsid-VNN	Nodavirus capsid protein
PF11056	UvsY	Recombination, repair and ssDNA binding protein UvsY
PF05311	Baculo_PP31	Baculovirus 33KDa late protein (PP31)
PF08994	T4_Gp59_C	T4 gene Gp59 loader of gp41 DNA helicase C-term
PF11590	DNAPolymera_Pol	DNA polymerase catalytic subunit Pol
PF03355	Pox_TAP	Viral Trans-Activator Protein
PF00906	Hepatitis_core	Hepatitis core antigen
PF12149	HSV_VP16_C	Herpes simplex virus virion protein 16 C terminal
PF06385	Baculo_LEF-11	Baculovirus LEF-11 protein
PF03044	Herpes_UL16	Herpesvirus UL16/UL94 family
PF03041	Baculo_LEF-2	lef-2
PF05464	Phi-29_GP4	Phi-29-like late genes activator (early protein GP4)
PF05505	Ebola_NP	Ebola nucleoprotein
PF05864	Chordopox_RPO7	Chordopoxvirus DNA-directed RNA polymerase 7 kDa polypeptide (RPO7)
PF01736	Polyoma_agno	Polyomavirus agnoprotein
PF04726	Microvir_J	Microvirus J protein
PF00508	PPV_E2_N	E2 (early) protein, N terminal
PF09158	MotCF	Bacteriophage T4 MotA, C-terminal
PF08684	ocr	DNA mimic ocr
PF00336	DNA_pol_viral_C	DNA polymerase (viral) C-terminal domain
PF04735	Baculo_helicase	Baculovirus DNA helicase
PF04929	Herpes_DNAp_acc	Herpes DNA replication accessory factor
PF05320	Pox_RNA_Pol_19	Poxvirus DNA-directed RNA polymerase 19 kDa subunit
PF05784	Herpes_UL82_83	Betaherpesvirus UL82/83 protein N terminus
PF08408	DNA_pol_B_3	DNA polymerase family B viral insert
PF00898	Orbi_VP2	Orbivirus outer capsid protein VP2

PF09625	VP9	VP9 protein
PF04498	Pox_VP8_L4R	Poxvirus nucleic acid binding protein VP8/L4R
PF01659	Luteo_Vpg	Luteovirus putative VPg genome linked protein
PF12415	rpo132	Poxvirus DNA dependent RNA polymerase
PF02459	Adeno_terminal	Adenoviral DNA terminal protein
PF02442	L1R_F9L	Lipid membrane protein of large eukaryotic DNA viruses
PF00424	REV	REV protein (anti-repression trans-activator protein)
PF05459	Herpes_UL69	Herpesvirus transcriptional regulator family
PF01696	Adeno_E1B_55K	Adenovirus EB1 55K protein / large t-antigen
PF02959	Tax	HTLV Tax
PF00242	DNA_pol_viral_N	DNA polymerase (viral) N-terminal domain
PF11634	IPI_T4	Nuclease inhibitor from bacteriophage T4
PF12410	rpo30_N	Poxvirus DNA dependent RNA polymerase 30kDa subunit
PF04941	LEF-8	Late expression factor 8 (LEF-8)
PF05892	Tricho_coat	Trichovirus coat protein
PF01785	Closter_coat	Closterovirus coat protein
PF01787	Ilar_coat	Ilarvirus coat protein
PF12818	Tegument_dsDNA	dsDNA viral tegument protein
PF03585	Herpes_ICP4_C	Herpesvirus ICP4-like protein C-terminal region
PF03584	Herpes_ICP4_N	Herpesvirus ICP4-like protein N-terminal region
PF03581	Herpes_UL33	Herpesvirus UL33-like protein
PF03580	Herpes_UL14	Herpesvirus UL14-like protein
PF04441	Pox_VERT_large	Poxvirus early transcription factor (VETF), large subunit
PF12524	GlyL_C	dsDNA virus glycoprotein L C terminal
PF11123	DNA_Packaging_2	DNA packaging protein
PF06931	Adeno_E4_ORF3	Mastadenovirus E4 ORF3 protein
PF07230	Phage_T4_Gp20	Bacteriophage T4-like capsid assembly protein (Gp20)
PF04838	Baculo_LEF5	Baculoviridae late expression factor 5
PF05847	Baculo_LEF-3	Nucleopolyhedrovirus late expression factor 3 (LEF-3)
PF02304	Phage_B	Scaffold protein B
PF11418	Scaffolding_pro	Phi29 scaffolding protein
PF00740	Parvo_coat	Parvovirus coat protein VP2
PF08452	DNAP_B_exo_N	DNA polymerase family B exonuclease domain, N-terminal
PF08456	Vmethyltransf_C	Viral methyltransferase C-terminal
PF03324	Herpes_HEPA	Herpesvirus DNA helicase/primase complex associated protein
PF09593	Pathogen_betaC1	Beta-satellite pathogenicity beta C1 protein
PF02236	Viral_DNA_bi	Viral DNA-binding protein, all alpha domain
PF11246	Phage_gp53	Base plate wedge protein 53
PF09214	Prd1-P2	Bacteriophage Prd1, adsorption protein P2
PF11050	Viral_env_E26	Virus envelope protein E26
PF09010	AsiA	Anti-Sigma Factor A
PF03293	Pox_RNA_pol	Poxvirus DNA-directed RNA polymerase, 18 kD subunit

PF01499	Herpes_UL25	Herpesvirus UL25 family
PF05273	Pox_RNA_Pol_22	Poxvirus RNA polymerase 22 kDa subunit
PF03052	Adeno_52K	Adenoviral protein L1 52/55-kDa
PF03274	Foamy_BEL	Foamy virus BEL 1/2 protein
PF00511	PPV_E2_C	E2 (early) protein, C terminal
PF02905	EBV-NA1	Epstein Barr virus nuclear antigen-1, DNA-binding domain
PF04623	Adeno_E1B_55K_N	Adenovirus E1B protein N-terminus
PF11053	DNA_Packaging	Terminase DNA packaging enzyme
PF11637	UvsW	ATP-dependant DNA helicase UvsW

Table S3: List of nine fungi-specific DNA-binding families with their functions.

Pfam ID	Pfam Name	Function
F09462	Mus7	DNA repair
PF12658	Ten1	Telomere capping
PF09197	Rap1-DNA-bind	DNA binding
PF09441	Abp2	Cell cycle regulation
PF04769	MAT_Alpha1	Transcription activator
PF03930	Flp_N	Recombinase
PF12659	Stn1_C	Telomere capping
PF10680	RRN9	Transcription initiation factor
PF02200	STE	Transcription factor

Table S4: List of 50 metazoan DNA-binding families.

Pfam ID	Pfam Name	Pfam Description
PF02946	GTF2I	GTF2I-like repeat
PF09121	Tower	Tower
PF09047	MEF2_binding	MEF2 binding
PF09292	Neil1-DNA_bind	Endonuclease VIII-like 1, DNA bind
PF04487	CITED	CITED
PF11825	Nuc_recep-AF1	Nuclear/hormone receptor activator site AF-1
PF10195	Phospho_p8	DNA-binding nuclear phosphoprotein p8
PF07545	Vg_Tdu	Vestigial/Tondu family
PF07815	Abi_HHR	Abl-interactor HHR
PF03165	MH1	MH1 domain
PF08474	MYT1	Myelin transcription factor 1
PF01586	Basic	Myogenic determination factor 5
PF04732	Filament_head	Intermediate filament head (DNA binding) region
PF04731	Caudal_act	Caudal like protein activation region
PF05044	Prox1	Homeobox prospero-like protein (PROX1)
PF06529	Vert_IL3-reg_TF	Vertebrate interleukin-3 regulated transcription factor
PF04814	HNF-1_N	Hepatocyte nuclear factor 1 (HNF-1), N terminus
PF09038	53-BP1_Tudor	Tumour suppressor p53-binding protein-1 Tudor
PF09033	DFE-C	DNA Fragmentation factor 45kDa, C terminal domain
PF12940	RAG1	Recombination-activation protein 1 (RAG1)
PF10264	Stork_head	Winged helix Storkhead-box1 domain
PF00157	Pou	Pou domain - N-terminal to homeobox domain
PF06959	RecQ5	RecQ helicase protein-like 5 (RecQ5)
PF04589	RFX1_trans_act	RFX1 transcription activation region
PF12885	TORC_M	Transducer of regulated CREB activity middle domain
PF11509	Telomere_Pot1	Protection of telomeres protein POT1
PF00859	CTF_NFI	CTF/NF-I family transcription modulation region
PF04988	AKAP95	A-kinase anchoring protein 95 (AKAP95)
PF14048	MBD_C	C-terminal domain of methyl-CpG binding protein 2 and 3
PF00751	DM	DM DNA binding domain
PF13922	PHD_3	Double-sex mab3 related transcription factor 1
PF07443	HARP	PHD domain of transcriptional enhancer, Asx
PF10491	Nrf1_DNA-bind	HepA-related protein (HARP)
PF12374	Dmrt1	NLS-binding and DNA-binding and dimerisation domains of Nrf1
PF12203	HDAC4_Gln	Glutamine rich N terminal domain of histone deacetylase 4
PF08188	Protamine_3	Spermatozal protamine family
PF02165	WT1	Wilm's tumour protein

PF02166	Androgen_recep	Androgen receptor
PF10426	zf-RAG1	Recombination-activating protein 1 zinc-finger domain
PF01530	zf-C2HC	Zinc finger, C2HC type
PF04704	Zfx_Zfy_act	Zfx / Zfy transcription activation region
PF10524	Nfi_DNAbd_pre-N	Nuclear factor I protein pre-N-terminus
PF02944	BESS	BESS motif
PF13866	zf-SAP30	SAP30 zinc-finger
PF11600	CAF-1_p150	Chromatin assembly factor 1 p150 subunit
PF08599	Nbs1_C	DNA damage repair protein Nbs1
PF10683	DBD_Tnp_Hermes	Hermes transposase DNA-binding domain
PF04621	ETS_PEA3_N	PEA3 subfamily ETS-domain transcription factor N terminal domain
PF12743	ESR1_C	Oestrogen-type nuclear receptor final C-terminal
PF02155	GCR	Glucocorticoid receptor

Table S5: DNA-binding Pfam families mapped to SCOP superfamilies.

SCOP superfamily	Pfam families mapped
a.4.5	Arg_repressor HTH_1 HTH_11 PadR RTP E2F_TDP Fork_head TFIIE_beta RFX_DNA_binding RPA_C Cdc6_C HTH_24 HTH_Crp_2 MarR_2 MarR Ets Rep_3 HSF_DNA-bind Linker_histone GntR Crp RuvB_C HTH_27 LexA_DNA_bind Pox_D5 HTH_20 HTH_5 HTH_IclR SelB-wing_3 FUR Fe_dep_repress z-alpha RQC PuR_N Pencillinase_R IBD HTH_34 HTH_9 HrcA_DNA-bdg Tn7_Tnp_TnsA_C DsrD HTH_23 HTH_28 HTH_29 HxlR Rio2_N HTH_CodY HTH_AsnC-type HTH_DeoR Put_DNA-bind_N FokI_N FokI_C IRF SelB-wing_1 SelB-wing_2 Ftsk_gamma F-112
c.37.1	DNA_pol3_delta2 SMC_N AAA_19 DEAD ResIII Helicase_C UvrB AAA_25 AAA DnaB_C T4SS-DNA_transf TraG-D_C TrwB_AAD_bind SNF2_N Bac_DnaA NTPase_1 RuvB_N Sigma54_activat TIP49 DNA_pol3_delta PolC_DP2 Rad51 RecA AAA_11 UvrD_C Exonuc_V_gamma UvrD_C_2 PPV_E1_C SecA_DEAD Viral_helicase1 MutS_V DEAD_2 AAA_27
a.4.1	Homeobox Homeobox_KN HTH_18 HTH_AraC HTH_8 Myb_DNA- bind_2 HTH_23 HTH_7 Myb_DNA-bind_6 Myb_DNA-binding CENP-B_N HTH_24 MarR_2 HTH_Tnp_Tc5 Rap1-DNA-bind HTH_28 TetR_N PAX Prox1 SLIDE Mor HTH_Tnp_Tc3_1 HTH_Tnp_Tc3_2 HTH_30 Myb_DNA-bind_5 SWIRM HTH_psq Homez HTH_Tnp_Mu_2 HTH_Tnp_Mu_1 HTH_Tnp_1 HTH_6
c.52.1	YqaJ MutH BamHI Endonuc-BglII Bse634I EcoRI RestrictionMunI Endonuc-BsobI NaeI NgoMIV_restric Hjc ERCC4 Phage_endo_I EcoRII-C Endonuc-MspI Endonuc-EcoRV Tn7_Tnp_TnsA_N Vsr Mrr_cat Rad10 Endonuc-FokI_C Endonuc-HincII XisH Endonuc- PvuII
a.35.1	HTH_19 HTH_25 HTH_26 HTH_31 HTH_3 Pou HNF-1_N HTH_35 HTH_23 LacI HTH_37 DUF1870 CUT Phage_CII Cro HTH_11
e.29.1	RNA_pol_Rpb2_1 RNA_pol_Rpb2_2 RNA_pol_Rpb2_3 RNA_pol_Rpb2_45 RNA_pol_Rpb2_6 RNA_pol_Rpb2_7 RNA_pol_Rpb1_1 RNA_pol_Rpb1_2 RNA_pol_Rpb1_3 RNA_pol_Rpb1_4 RNA_pol_Rpb1_5 RNA_pol_Rpb1_6 RNA_pol_Rpb1_7 RNA_pol_Rpb2_4 RNA_pol_Rpb2_5
b.40.4	Rho_RNA_bind tRNA_anti CSD DNA_ligase_OB Phage_DNA_bind BRCA-2_OB1 Telo_bind TEBP_beta Rep_fac-A_C RecO_N DNA_ligase_A_C gp32 TIP49 Rep_fac-A_3
c.55.3	rve DNA_pol_B_exo1 RNase_H Ydc2-catalyt DNA_pol_A_exo1 DDE_Tnp_1 Dimer_Tnp_Tn5 Taq-exonuc DNA_pol_B_exo2 NurA DNA_pol_B_2 Exonuc_X-T_C
a.4.6	GerE HTH_23 HTH_24 HTH_38 Sigma70_r4_2 Sigma70_r4 Spo0A_C HTH_10 Trans_reg_C

SCOP superfamily	Pfam families mapped
d.131.1	DNA_PPF gp45-slide_C Herpes_UL42 PCNA_N PCNA_C DNA_pol3_beta DNA_pol3_beta_2 DNA_pol3_beta_3
b.2.5	RHD STAT_bind Runt T-box NDT80_PhoG CEP1-DNA_bind P53 LAG1-DNAbind
e.8.1	DNA_pol_B IMS_HHH IMS RNA_pol DNA_pol_A DNA_pol_B_2 RVT_1 RVT_thumb
a.4.13	Sigma70_r4 Sigma70_r3 HTH_23 Sigma70_ECF Sigma70_r4_2 HTH_11 HTH_38
c.66.1	N6_N4_Mtase DNA_methylase MethyltransfD12 HsdM_N N6_Mtase DUF519 Eco57I
a.6.1	HTH_17 Phage_Nu1 MerR_1 MerR-DNA-bind MerR HTH_Tnp_Mu_1 Exc
g.37.1	zf-C2H2_4 zf-C2H2 zf-C2H2_2 zf-C2H2_6 zf-RAG1 GAGA zf-BED
g.39.1	zf-FPG IleRS zf-C4 zf-AD Neil1-DNA_bind zf-FCS THAP GATA
a.43.1	Arc MetJ Omega_Repress ParG RHH_1 SeqA DUF1778
a.60.2	HHH Transposase_20_5_3 exonuc DNA_ligase ZBD HHH_2 HHH_3
d.4.1	Endonuclease_7 Endonuclease_NS HNH_3 NUMOD4 Colicin-DNase Endonuclease_1
d.89.1	PPV_E1_C Gemini_AL1 Rep_N TrwC_T_Ag DNA_bind
d.95.2	Endonuc_subdom Hom_end HTH_WhiA LAGLIDADG_1 LAGLIDADG_2
a.60.4	DNA_pol_lambd_f HHH_2 HHH_3 HHH IMS_HHH
a.80.1	DNApol3-delta_C Rep_fac_C DNA_pol3_gamma3 RFC1 MgsA_C
a.121.1	TetR_C_5 TetR_C WHG TetR_C_6
d.10.1	Integrase_DNA AP2 MBD Phage_integ_N
g.44.1	zf-C3HC4 zf-RING_2 zf-Nse ZZ
a.96.1	HHH EndIII_4Fe-2S DUF1886 Adenine_glyco
a.4.14	KorB HTH_23 HTH_38 HTH_3
d.14.1	DNA_mis_repair DNA_gyraseB Topo-VIb_trans
d.142.2	DNA_ligase_A MRNA_ligase DNA_ligase_aden
a.22.1	Histone TAF Bromo_TP
e.13.1	DnaB_bind Toprim_N Toprim
d.163.1	Phage_integrase Topoisom_I Flp_C
b.121.5	Parvo_coat Phage_G Phage_F
d.129.1	TBP OGG_N AlkA_N
a.60.9	Phage_integr_N2 Phage_integr_N Flp_N
b.26.1	IRF-3 MH2 FtsK_SpoIIIE_N
g.41.3	zf-CHC2 TF_Zn Ribbon TFIIS_C
c.120.1	5_3_exonuc_N XPG_I XPG_N
a.120.1	T4_Gp59_C T4_Gp59_N
a.60.12	DNA_pol_lambd_f HHH_3
c.93.1	Peripla_BP_1 Peripla_BP_3

SCOP superfamily	Pfam families mapped
a.113.1	MutS_III MutS_IV
a.32.1	TFIIA_TFIIA_gamma_N
a.55.1	Bac_DNA_binding_Tra_M
d.58.8	EBV-NA1_PPV_E2_C
a.267.1	HTH_24_HTH_AsnC-type
a.78.1	FadR_C_FCD
a.38.1	HLH_Myc-LZ
b.142.1	EcoRII-N_B3
b.56.1	TFIIA_TFIIA_gamma_C
e.10.1	Topoisom_bac_Toprim
a.118.1	MIF4G_DNA_alkylation
b.34.13	Chromo_7kD_DNA_binding
c.55.7	DUF1938_Methyltransf_1N
b.82.1	AraC_binding_Mif2
d.287.1	Methylase_S_TaqI_C
d.264.1	Prim-Pol_DNA_primase_S
b.131.1	Ku_C_Ku
a.4.12	Bac_DnaA_C_Trp_repressor
c.62.1	VWA_Ku_N
e.11.1	DNA_topoisoIV_Toprim
b.55.1	SSrecog
d.75.2	MutS_I
a.213.1	DinB
a.4.3	ARID
a.74.1	TFIIB
b.110.1	Pyocin_S
b.113.1	Fapy_DNA_glyco
e.12.1	TP6A_N
b.34.7	IN_DBD_C
d.18.1	PC4
c.53.1	Resolvase
a.142.1	PRD
d.380.1	zf-CGNR
a.60.6	HHH
d.3.1	Rad4
a.27.1	zf-FPG_IleRS
a.54.1	Viral_DNA_bi
e.71.1	HHH_3
g.66.1	zf-CCCH
d.50.1	Rad52_Rad22
c.52.3	RNA_pol_Rpb5_N
b.68.10	DNA_gyraseA_C

SCOP superfamily	Pfam families mapped
a.62.1	Hepatitis_core
a.34.2	HNF-1_N
c.31.1	SIR2
a.5.1	RuvA_C
b.42.7	BTB
b.69.4	WD40
a.171.1	Tower
g.53.1	zf-TAZ
c.126.1	DNA_III_psi
a.60.8	HRDC
g.41.9	DNA_RNAPol_7kD
d.217.1	SAND
a.49.1	Phage-MuB_C
c.136.1	Toprim
e.49.1	Toprim
g.51.1	Viral_DNA_Zn_bi
a.270.1	DBD_Tnp_Hermes
d.304.1	UPF0150
a.146.1	TRF
g.85.1	zf-HIT
d.343.1	PRiA4_ORF3
d.68.6	Alba
d.199.1	MotCF
a.235.1	DNA_ligase_A_N
d.268.1	ParBc
c.55.6	MutS_II
g.91.1	E7
b.68.9	US22
c.18.1	UDG
d.240.1	IMS_C
d.228.1	SeqA
d.57.1	DinI
b.38.5	Regulator_TrmB
b.43.5	CTP-dep_RFKase
g.72.1	SBP
d.222.1	YbaB_DNA_bd
a.140.2	SAP
c.1.9	TatD_DNase
e.2.1	Ter
a.60.3	RNA_pol_A_CTD
a.47.1	STAT_alpha
d.61.1	2H-phosphodiester

SCOP superfamily	Pfam families mapped
a.118.19	Ku_PK_bind
a.179.1	Inhibitor_G39P
d.283.1	PmbA_TldD
d.79.6	RusA
a.18.1	Pyr_excise
g.62.1	DM
g.38.1	Zn_clus
c.28.1	DNA_photolyase
d.136.1	Regulator_TrmB
b.82.4	AraC_binding
d.215.1	SMC_hinge
d.320.1	DisA_N
d.88.1	SRF-TF
c.23.1	Response_reg
a.5.4	TFIIS_M
b.35.2	CAT_RBD
g.41.18	TF_Zn_Ribbon
b.82.3	cNMP_binding
d.247.1	MC1
b.126.1	Prd1-P2
d.74.2	Arg_repressor_C
a.140.5	EIN3
d.236.1	Sigma70_r4
b.86.1	Hom_end_hint
b.59.1	XRCC4
b.143.1	NAM
a.60.5	BAF
c.87.1	T4-Gluco-transf
d.48.1	RecA
a.124.1	S1-P1_nuclease
a.140.4	Endonuc-dimeris
d.17.4	VirB8
d.239.1	GCM
a.37.1	bZIP_Maf
b.121.3	Nucleoplasmin
a.145.1	FlhD
a.187.1	HAND
d.186.1	gpW
a.60.7	5_3_exonuc
d.306.1	PhdYeFM_antitox
a.76.1	Fe_dep_repr_C
b.34.9	53-BP1_Tudor

SCOP superfamily	Pfam families mapped
b.46.1	Pur_DNA_glyco
d.295.1	Tbf5
d.135.1	HORMA
d.58.57	Y1_Tnp
d.50.3	Stirrup
d.58.4	AsnC_trans_reg
a.159.3	ocr
b.34.17	YccV-like
a.237.1	DNA_pol3_theta
d.292.1	MutL_C
b.34.12	BAH
a.99.1	FAD_binding_7
d.288.1	GTF2I
a.155.1	Histone_HNS
g.48.1	Ada_Zn_binding
g.45.1	RecO_C
e.63.1	DP
a.5.6	dsDNA_bind
b.7.5	DUF2027
g.79.1	WRKY
d.180.1	Alpha_TIF
a.275.1	DnaB_2
b.34.21	Plus-3
d.34.1	KilA-N
e.64.1	FlhC
a.81.1	DnaB
a.262.1	DNA_primase_lrg
d.68.7	R3H
a.159.5	Fe-S_assembly
a.118.8	EST1_DNA_bind
c.124.1	Sugar-bind
a.118.16	Translin
a.140.3	Rho_N
d.58.18	NikR_C
g.41.2	ADK_lid
a.236.1	DnaG_DnaB_bind
d.121.1	VirDNA-topo-I_N
a.34.1	SinI
d.208.1	Archease
a.177.1	Sigma70_r2
g.73.1	zf-C2HC
e.15.1	Topoisom_I_N

SCOP superfamily	Pfam families mapped
b.129.1	MraZ
d.257.1	DNase-RNase
b.91.1	PPV_E2_N
b.121.2	Capsid_NCLDV
a.156.1	H2TH
d.151.1	Exo_endo_phos
d.326.1	XisI
d.379.1	TFIID_90kDa
a.4.2	DNA_binding_1
a.150.1	AsiA
a.241.1	Tra_M
g.47.1	Copper-fist
a.21.1	HMG_box
c.128.1	DNA_pol3_chi
d.164.1	MH1
a.4.10	Integrase_Zn
d.315.1	TRCF
a.137.14	Activator_LAG-3
b.1.18	TIG
a.164.1	DFF-C
a.263.1	Phi-29_GP3