



Service Bulletin

File in Section: -

Bulletin No.: PI0768D

Date: October, 2013

PRELIMINARY INFORMATION

Subject: 2.0L/2.5L Engine 2013 Exchange Program and 2014 PQC Restriction (GMNA Only)

Models: 2013-2014 Cadillac ATS
2014 Cadillac CTS Sedan
2013-2014 Chevrolet Malibu
Equipped with 2.5L or 2.0L Engine (RPOs LCV, LTG)

Attention: The 2014 model year ATS, CTS Sedan and Malibu engines are NOT on exchange but the part numbers are still restricted and PQC must be contacted before the service engine can be released.

This PI has been revised to add the CTS Sedan and the 2014 model year. The above Attention statement has also been added. Please discard PI0768C.

This PI will cover the engine exchange program only for the 2013 models listed above. This exchange program will be in effect for the first full year of vehicle production. Additional PIs will be published for each engine or component as they are introduced.

During the launch of the 2013 model year, the following engines will be under an exchange program:

- 2.5L Engine Assembly (VIN A - RPO LCV)
- 2.0L Engine Assembly (VIN X - RPO LTG)

Product teams continually seek valuable information for engineering improvements. To assist in this effort, an engine exchange program will be used for the listed engine and vehicles. The 2013 model year engine exchange program will be administered by the GM Product Quality Center (PQC). Dealerships are required to call the PQC, not GM Technical Assistance (TAC), to request an exchange. Prior to calling the PQC, please make sure to complete the "OEM Engine Exchange" worksheet in this PI. Use of the worksheet will minimize the time spent on the telephone and avoid the need of a second call to the PQC. Guidelines for honoring exchange requests under this program are being strictly enforced.

The PQC may refer the dealer technician to TAC if additional diagnosis is required. TAC will be available for product inquiries that do not require assembly replacement.

Division	PQC Telephone Number
US Cars and Trucks	1-866-654-7654
Canada – English and French	

Components that may be removed and serviced without exchange are identified by an "X" in the appropriate column of the table below. Any repairs involving engine components not identified in the table below, engine noise concerns, oil consumption, or related symptoms may require an engine exchange.

Important: Engine block and internal components along with any component in which a cylinder head has to be removed to perform the repair will require an engine exchange.

Please note that this list is subject to change as the program progresses. You will be notified by the PQC consultant if additional items are considered serviceable on a particular engine.

Serviceable Components	2013 2.5L (RPO LCV)	2013 2.0 (RPO LTG)
Accessory Drive	X	X

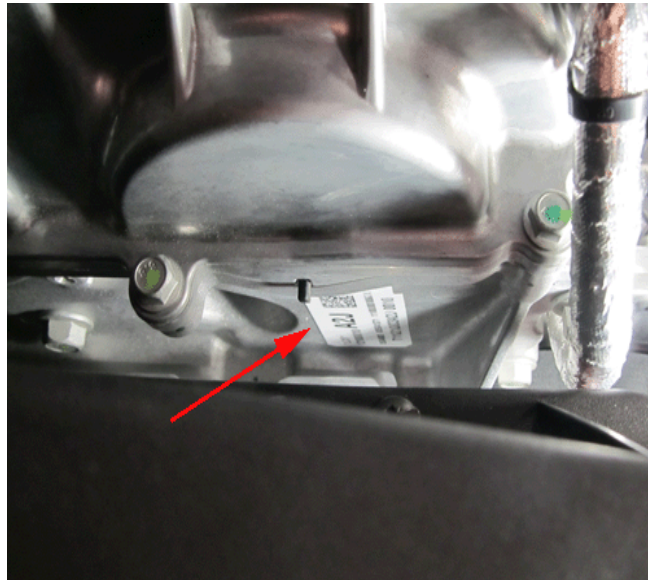
Serviceable Components	2013 2.5L (RPO LCV)	2013 2.0 (RPO LTG)
A/C Compressor	X	X
All Cooling System Hoses	X	X
All Engine Sensors	X	X
Brackets	X	X
Camshaft Cover	X	X
Coolant Pump	X	X
Cooling System Bypass Pipe	X	X
Cooling System Radiator Inlet/Outlet Pipes	X	X
Coolant Outlet Assembly	X	X
Crankshaft Damper	X	X
Engine Control Module (ECM)	X	X
Engine Mounts / Transaxle Mounts	X	X
Engine Wiring Harness	X	X
Exhaust Manifold / Gasket	X	X
Flywheel / Flex Plate	X	X
Fuel Injectors	X	X
Fuel Injector Wiring Harness	X	X
Fuel Rail	X	X
Generator	X	X
Heater Outlet / Inlet Fittings	X	X
Ignition System (Coil, Spark Plug)	X	X
Intake Air Ducts and related components	X	X
Intake Air Temperature Sensor	X	X
Intake Manifold	X	X
Knock Sensors	X	X
MAP or Baro Sensor	X	X
Mass Air Flow Sensor	X	X
Oil Fill Cap	X	X
Oil Filter	X	X
Oil Level Indicator	X	X
Oil Pressure Switch	X	X
Oxygen Sensors	X	X
PCV Hose's	X	X
PCV System	X	X
Purge Solenoid	X	X
Starter Motor and Solenoid	X	X
Thermostat Housing / Gasket	X	X
Throttle Body / Related Components	X	X
Vacuum Pump and Lines	X	X
Vapor Vent Lines / Seals	X	X

Serviceable Components	2013 2.5L (RPO LCV)	2013 2.0 (RPO LTG)
Turbo Assembly / POA parts/ Bracket/ Gasket		X
Turbo Oil and Coolant Pipes		X
Oil Cooler / Pipes		X
Fuel Pipes & HP Fuel Pump Assembly	X	X
SAI		X
Hi / Lo Pressure Fuel Lines	X	X
Engine Cover / beauty Cover	X	X
Oil Pressure Control Solenoid Valve	X	

Important: Engine repairs or failures that are caused by components external to the engine do NOT fall under the exchange program. For example, if an engine failure is caused by incorrectly installed engine coolant lines, the engine assembly (or parts required to complete a repair) must be obtained from General Motors Customer Care and Aftersales (GMCC&A) through the normal parts ordering process. The exchange program is created as a way to correct internal concerns and to take what is learned and find a way to eliminate these concerns. External components causing a failure do not provide any useful information in improving an engine. The engine received from GMCC&A through the normal parts ordering process will be a new service engine.

Engine Broadcast Code Location

2.5L (LCV) Engine



2.0L (LTG) Engine



2904642

As shown in the above photos, the engine broadcast code can be found on the front of the engine.

Procedures

A thorough diagnosis must be performed on the condition in order to prevent unnecessary component replacements. Contact the Product Quality Center (PQC) to verify the proper diagnosis has been performed. Upon review of the diagnosis, the PQC will establish a case reference number and make arrangements for shipping an exchange unit to your dealership. The replaced engine must be returned to the Warranty Parts Center (WPC). **DO NOT SHIP AN ENGINE TO THE (WPC) WITHOUT AN OFFICIAL WPC REQUEST.**

Important: Failure to return the replaced engine by the due date will result in the dealership being debited the entire warranty claim (parts and labor). The removed unit must be returned complete in the original exchange shipping container. For effective engineering analysis, please do not remove any components. Dress items on the removed unit must remain the same as the replacement engine (e.g., exhaust manifolds, throttle body, etc.). Dealerships returning engines/components that have been even partially disassembled will be judged as violating this procedure and, as such, will be billed for all materials furnished.

Notice: The exchange unit will be shipped with a quantity of oil; check oil level before starting the engine. Low oil level could result in internal engine damage.

WPC Request

The Warranty Parts Center (WPC) will fax a Special Part Request to your dealership requesting the return of the removed engine. **DO NOT** wait for the warranty claim to be paid before returning the removed engine.

The Special Part Request will provide a request number. This request number must be written on the outside of the return container using a permanent marker. Failure to write the request number on the return container may delay the processing of your return.

If you do not receive the WPC Special Part Request, contact Julie Cumo at 248-371-9939 (for French call PQC 1-866-654-7654) to obtain the proper paperwork in order to return the removed engine. Failure to return the engine may result in a debit.

Shipping Preparation

1. Remove the engine assembly/component as outlined in the applicable Service Manual.
2. Drain all fluids from the removed engine.
3. Retorque any fasteners that were loosened or removed to the original torque specification.
4. Remove any plastic shipping plugs and covers from the exchange unit and install them on the removed unit.
5. If the concerned engine leaks, mark the area directly on the engine with a permanent marker.
6. Write the PQC case reference number on the repair order form.
7. Write the PQC case reference number directly on the component in a visible location.
8. Insert a copy of the WPC Special Part Request, repair order with technician comments, and the completed OEM Engine Exchange Worksheet (in this bulletin) into a plastic bag and securely fasten to the engine.
9. Place the removed engine into the original shipping container.

Shipping Instructions

1. Write the WPC request number and the PQC case reference number on the outside of the container with a permanent marker.
2. U.S. Dealers – Please go to www.gmwpc.com, click on the UPS emblem, enter your BAC and select “dealer inquires.” Select “available forms” located on the left side of the screen in blue, then select “Central Transport BOL.” A partially complete BOL will appear. Please print this Central Transport BOL and fill out “from” section with your dealer information and complete the description fields.
Canadian Dealers – Refer to the latest version of Corporate Bulletin Number 99-00-89-019 for detailed shipping information.
3. Contact the specified carrier to arrange for pick-up of the removed engine. If lift gate service is necessary, please request it at the time of arranging pick-up service.
4. Have the driver sign the bill of lading. Retain a copy of the signed bill of lading. Attach your copy to the original repair order. This will be your proof of returning the removed engine.
5. Ship all return exchanges/components Third Party Freight Collect with appropriate paperwork to:
GM Warranty Parts Center
45 Northpointe Drive
Orion, MI 48359

Warranty Information

For vehicles repaired under warranty, use:

Labor Operation	Description	Labor Time	Parts Allowance
4067490*	Engine		

Replacement

Use Published Labor Operation Time

\$400.00

Add

Administrative Allowance

0.2 hr

*Use published labor operation time plus the administrative allowance indicated above.

Important: Applicable miscellaneous items such as engine oil and coolant should be added to the part allowance amount and claimed in the Parts Cost column and not included in the Net Amount (DMN) column of the warranty claim.

Your cooperation is greatly appreciated. Prompt return of the original engine will increase the effectiveness of this program. If you have any questions regarding the exchange program administrative procedures, please contact the Product Quality Center.

OEM Engine Exchange Worksheet

Caller's Name/Position:
Parts Manager name:
Technician Direct Phone:
Dealership's Fax Number:
Parts Dept fax number:
Customer Concern:
Has dealer completed the "OEM Engine Exchange" template in bulletin and reviewed Serviceable Components? (If no, dealer MUST complete Bulletin and call back)
Has the vehicle been modified with non-production accessories?
What type of service is the vehicle being used in (police, taxi, towing, personal, etc.)?

Describe the failure of the engine:

Broadcast Code:

Engine Serial Number:

Replacement Cost = \$

Requested Labor Time:

Leaks

What type of leak?

Where is the leak located?

Noise

What kind:

Where is it:

Frequency of noise:

When does it occur:

How long does it last:

At what temperature does it occur:

Lubrication

Oil pressure readings:

Results of oil consumption test:

Oil contamination?

Performance Concern

Low power?

Misfire?

Detonation?

Blue smoke?

White smoke?

Will not crank?

Vibration?

Did the engine show evidence of:

Overheating?

DTCs in the ECM/TCM/BCM? *****Note: GDS must be launched from TIS to make sure all the data is captured and can be retrieved.**

Coolant consumption?

Coolant contamination?

Low compression?

Please provide the readings: