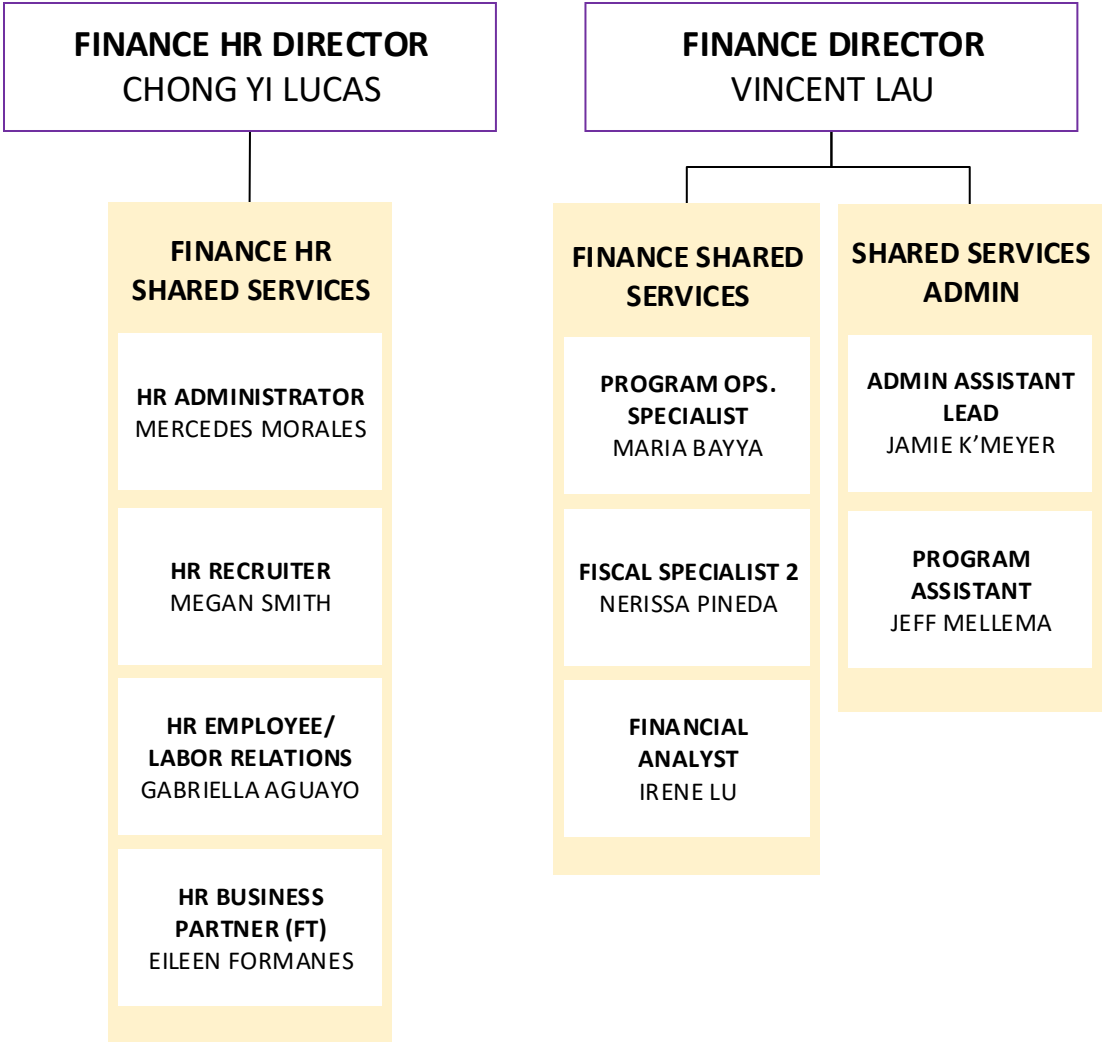
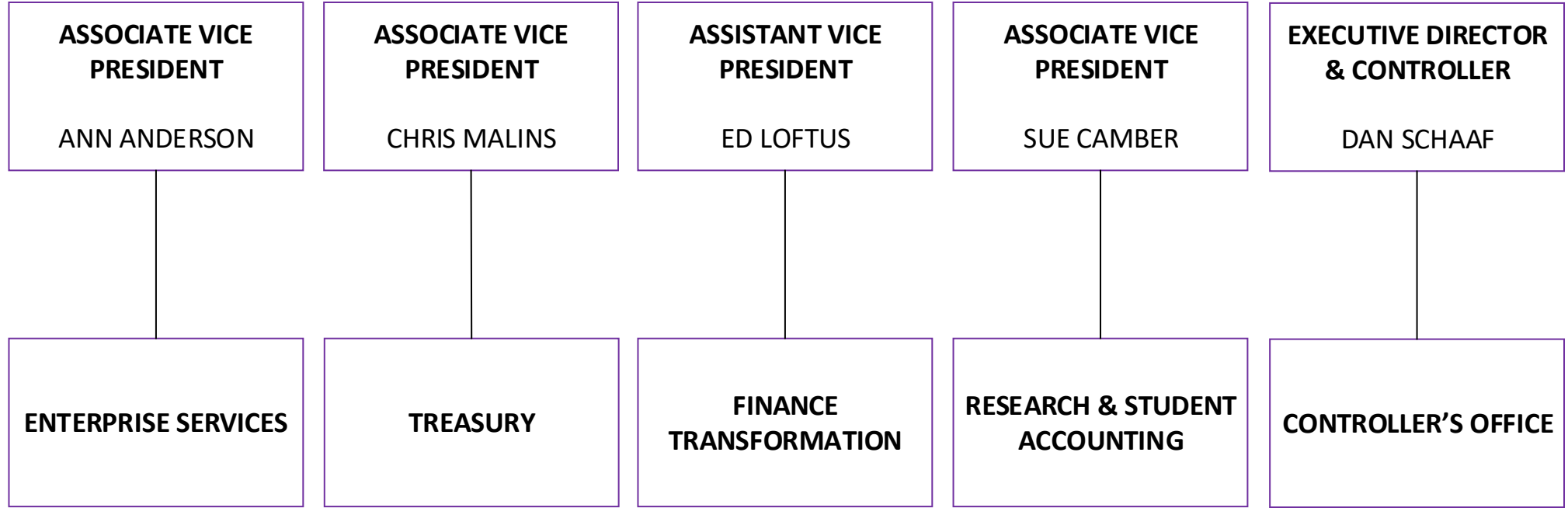


VICE PRESIDENT FOR UW FINANCE
BRIAN MCCARTAN

ASSISTANT TO THE VP
RENATA JEMENIDZIC

FINANCE

FINANCE SHARED SERVICES



VICE PRESIDENT FOR UW FINANCE
BRIAN MCCARTAN

ASSISTANT TO THE VP
RENATA JEMENIDZIC

FINANCE **FINANCE SHARED SERVICES**

ENTERPRISE SERVICES
ANN ANDERSON

TREASURY
CHRIS MALINS

FINANCE TRANSFORMATION
ED LOFTUS

RESEARCH & STUDENT ACCOUNTING
SUE CAMBER

CONTROLLER'S OFFICE
DAN SCHAAF

FINANCE HR SHARED SERVICES
CHONG YI LUCAS

FINANCE SHARED SERVICES
VINCENT LAU

- PROCUREMENT SERVICES
- DATA GROUP
- TAX MANAGEMENT
- INTEGRATED SERVICE CENTER
- INFORMATION GOVERNANCE & COMPLIANCE
- CREATIVE COMMUNICATIONS

- OPERATIONS & INVESTORS RELATIONS
- CASH GOVERNANCE
- ASSET LIABILITY MANAGEMENT
- TREASURY OPERATIONS

- PROGRAM DESIGN
- OPERATING MODEL
- CHANGE MANAGEMENT
- PROJECT MANAGEMENT
- TECHNOLOGY

- MANAGEMENT ACCOUNTING & ANALYSIS
- RESEARCH COMPLIANCE & OPERATIONS
- STUDENT FISCAL SERVICES

- EQUIPMENT INVENTORY
- MERCHANT SERVICES
- FINANCIAL REPORTING
- BANKING & ACCOUNTING OPERATIONS

- FINANCE HR SHARED SERVICES

- FINANCE SHARED SERVICES
- FINANCE ADMIN SHARED SERVICES



EQUIPMENT INVENTORY

MERCHANT SERVICES

FINANCIAL REPORTING

BANKING & ACCOUNTING OPERATIONS

ASST DIRECTOR
SAMIR KHOURY

DIRECTOR
KEVIN DOAR

ASST DIRECTOR
STEPHEN BRADY

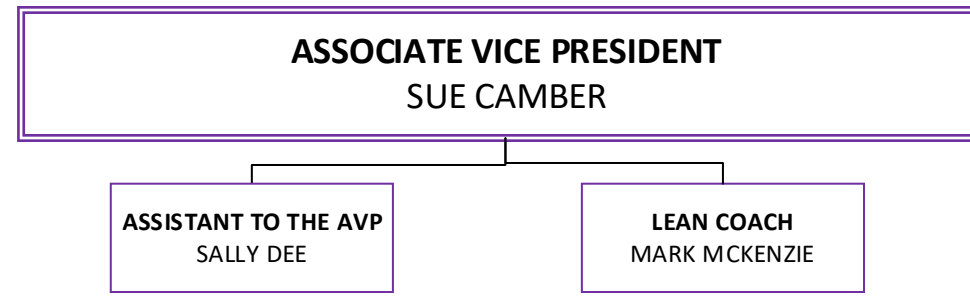
ASST DIRECTOR
MARK PARK

- EQUIPMENT INVENTORY**
- ASSET ACCOUNTING ANALYST**
VACANT
- PROPERTY COMPLIANCE ANALYST**
VACANT
- FIXED ASSET SPECIALIST**
ANNE LAWSON
- FIXED ASSET SPECIALIST**
PEGGY VITULLO

- MERCHANT SERVICES**
- ASST DIRECTOR**
GORDON SCHERER
- PROGRAMS OPS ANALYST**
HANA KENNY
- COMPLIANCE ANALYST**
FAHM CHOU
- E-COMMERCE MANAGER**
MELISSA HALL

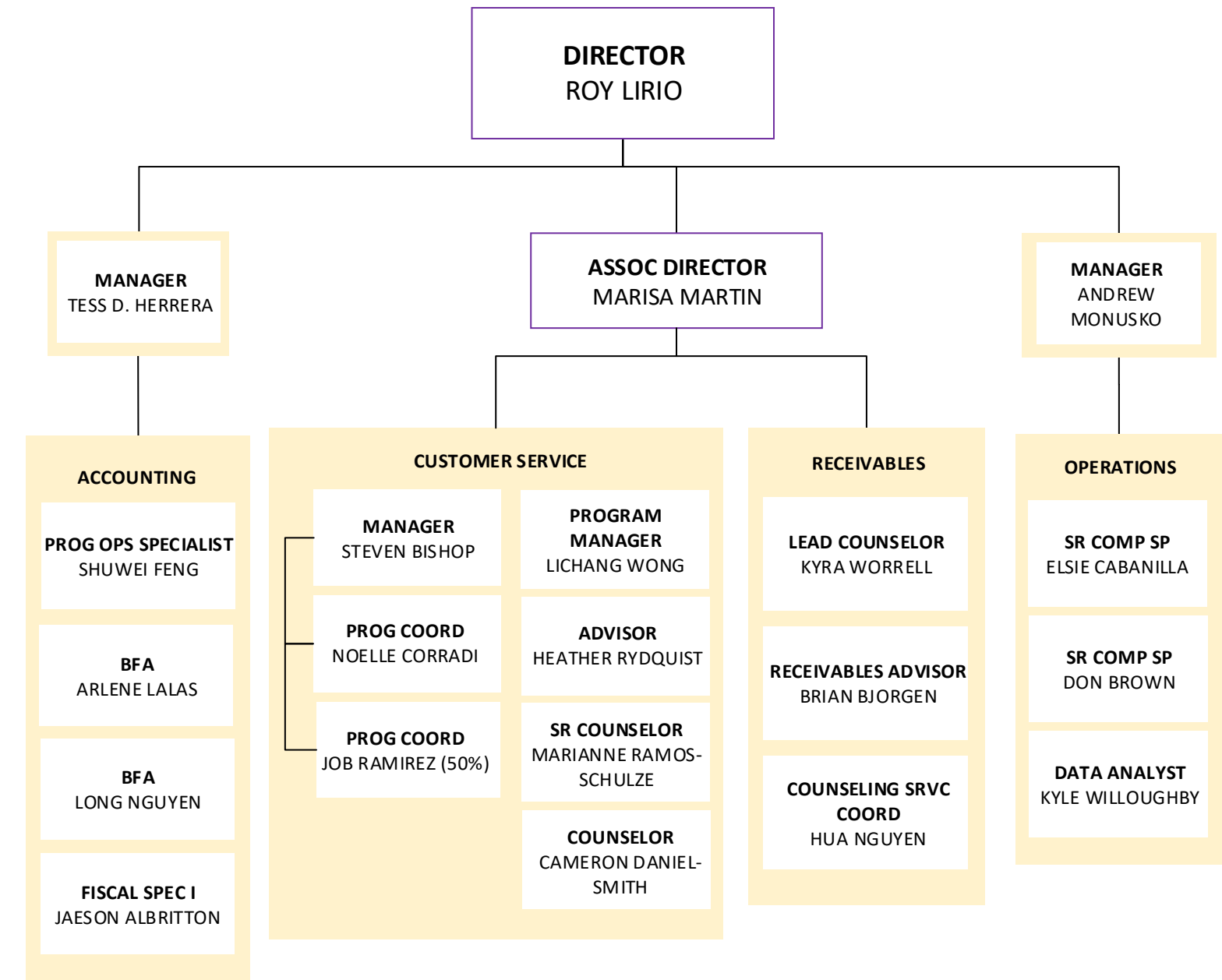
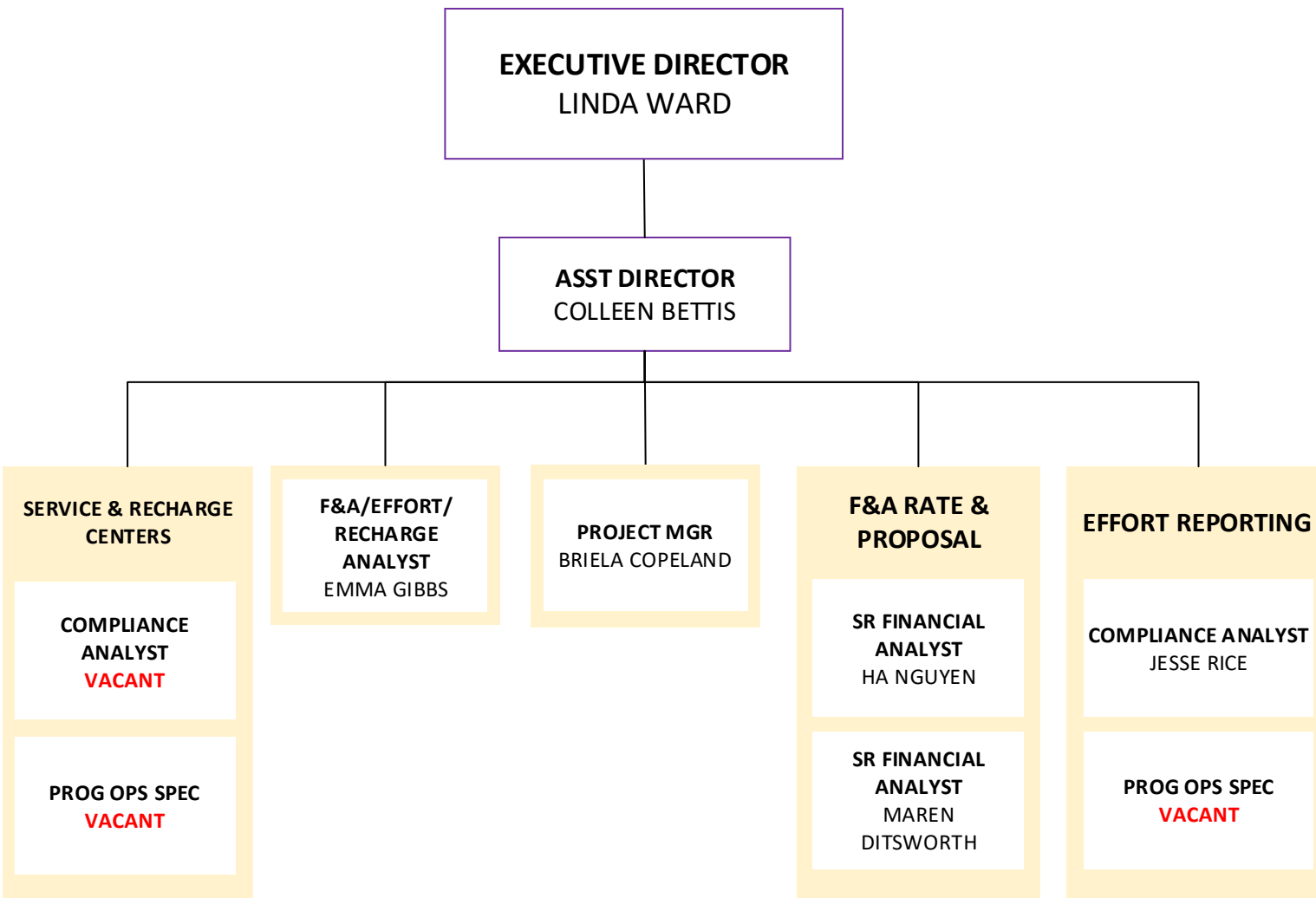
- FINANCIAL REPORTING**
- SR FIN REPORTING ANALYST**
ERIN FUJIWARA
- FIN REP ANALYST**
MARIA TIAMZON
- FIN REP ANALYST**
KATHY GUDGEL
- MANAGER**
VERA KIRITCHOUK

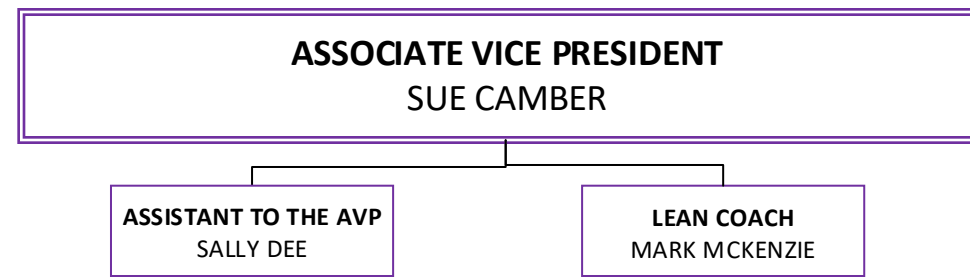
- BANKING & ACCOUNTING OPERATIONS**
- COMPLIANCE ANALYST**
HAE HAN
- COMPLIANCE ANALYST**
ELLIE VALENZA
- COMPLIANCE ANALYST**
HAILEEN MADARANG
- COMPLIANCE ANALYST**
SUVI YEE



MANAGEMENT ACCOUNTING & ANALYSIS

STUDENT FISCAL SERVICES





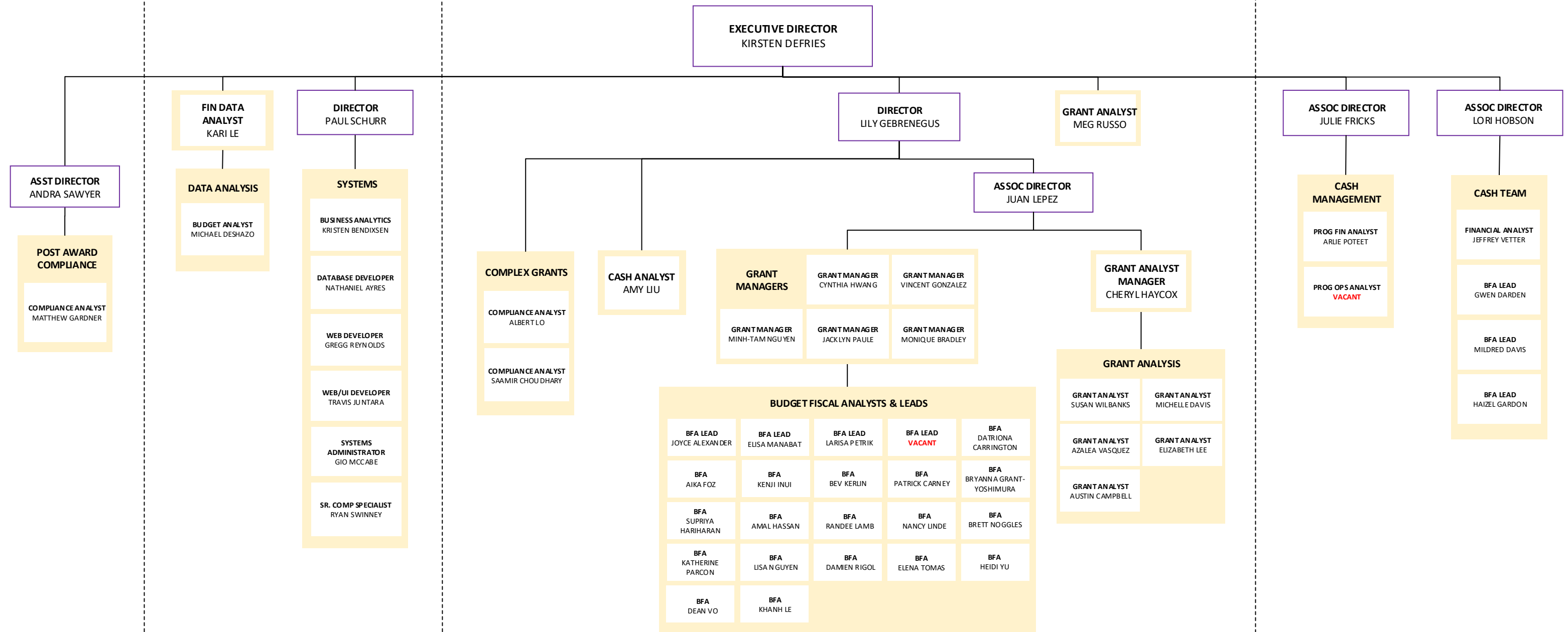
RESEARCH COMPLIANCE & OPERATIONS

POST AWARD FISCAL COMPLIANCE

SYSTEMS & DATA ANALYSIS

GRANT & CONTRACT ACCOUNTING

RESEARCH & CASH ACCOUNTING

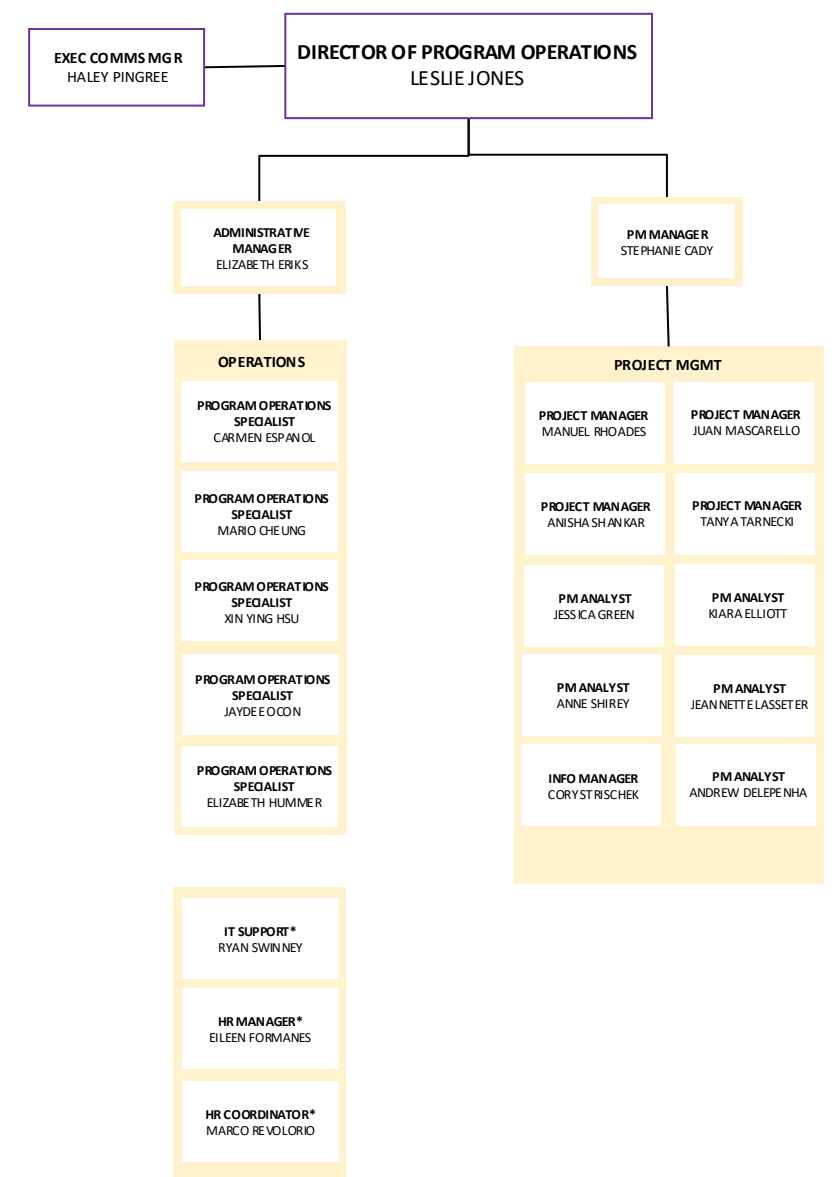
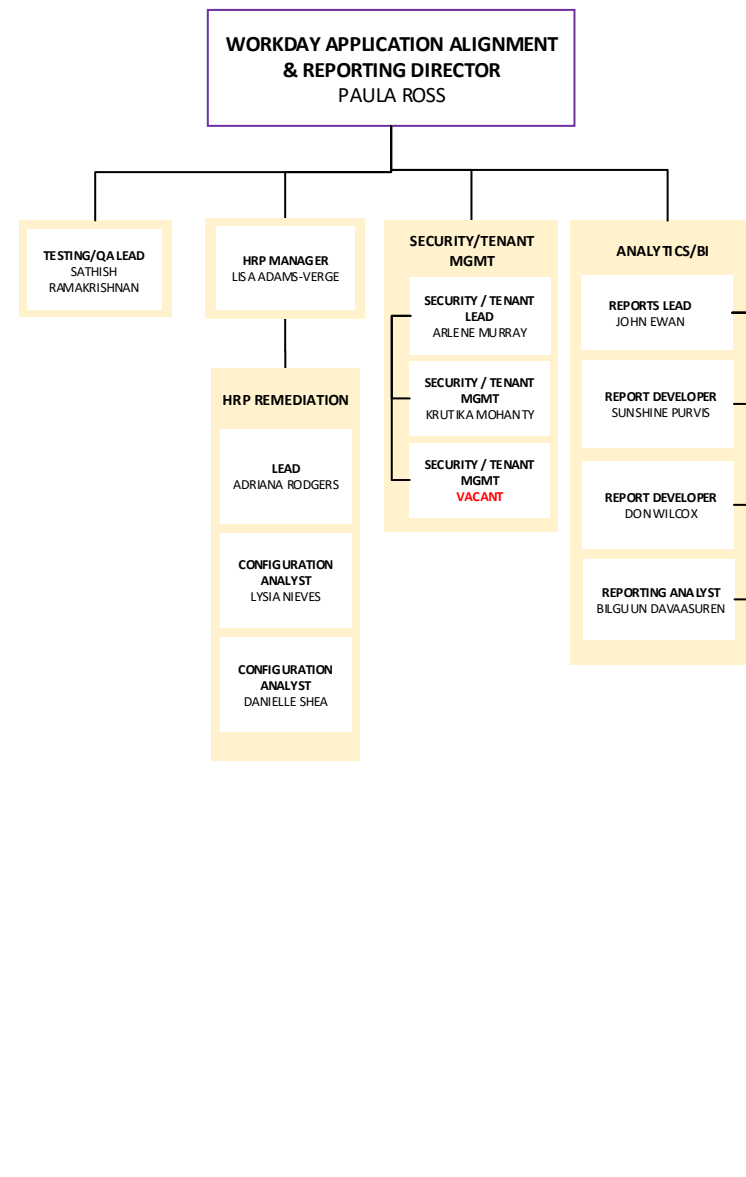
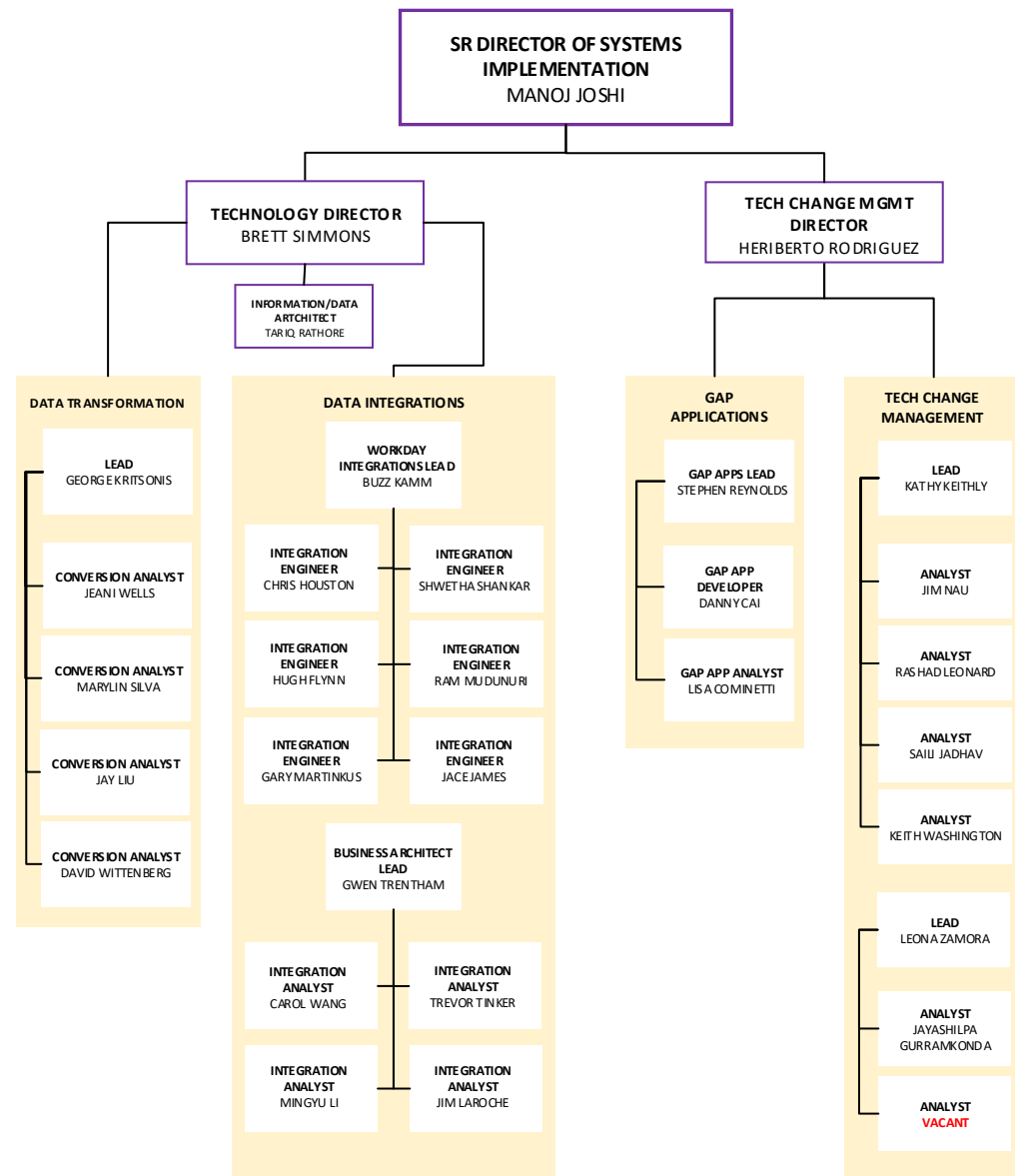


ASSISTANT VICE PRESIDENT
ED LOFTUS

FINANCE MANAGER
BETSY BRADSBY

TECHNOLOGY

PROJECT MANAGEMENT



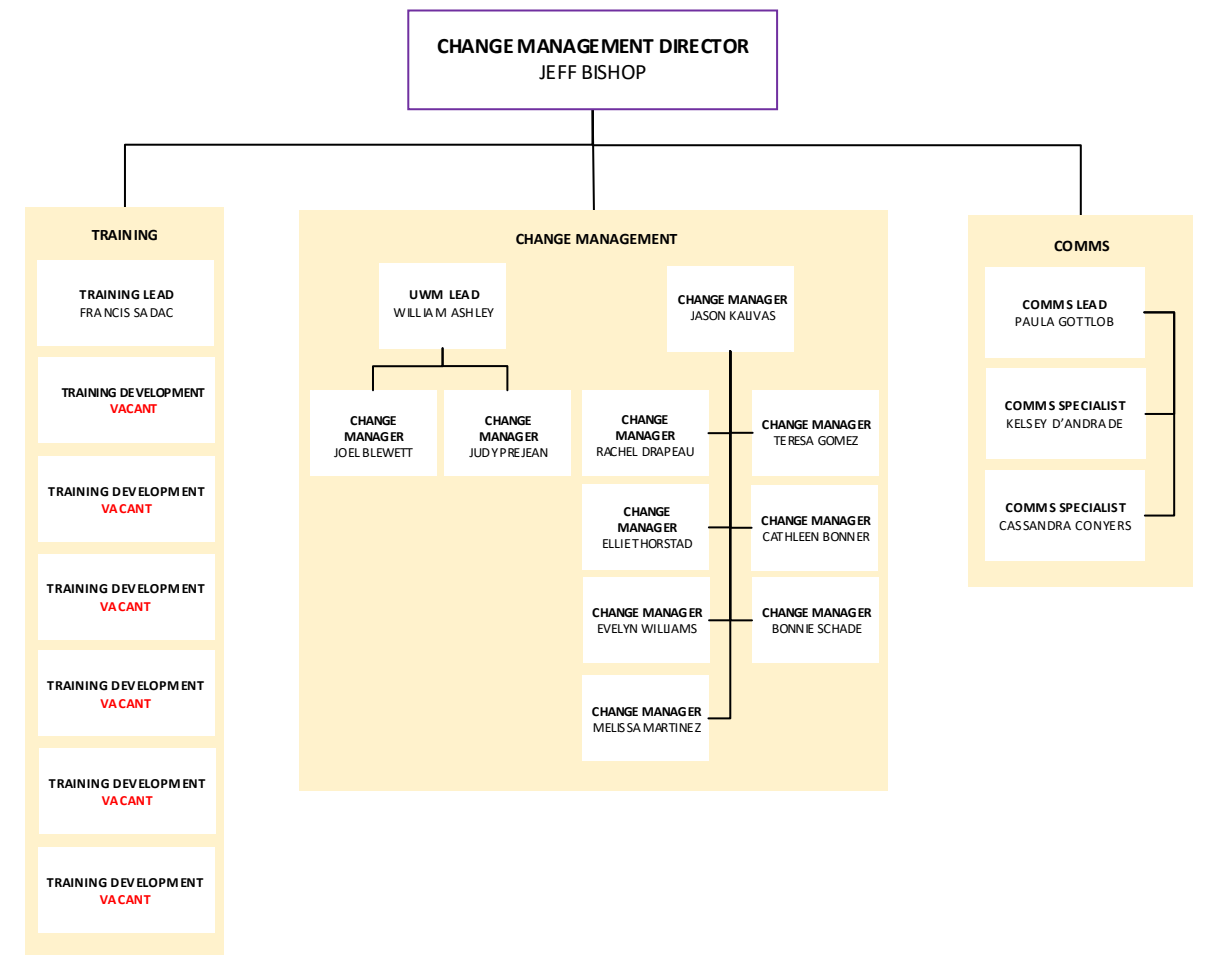
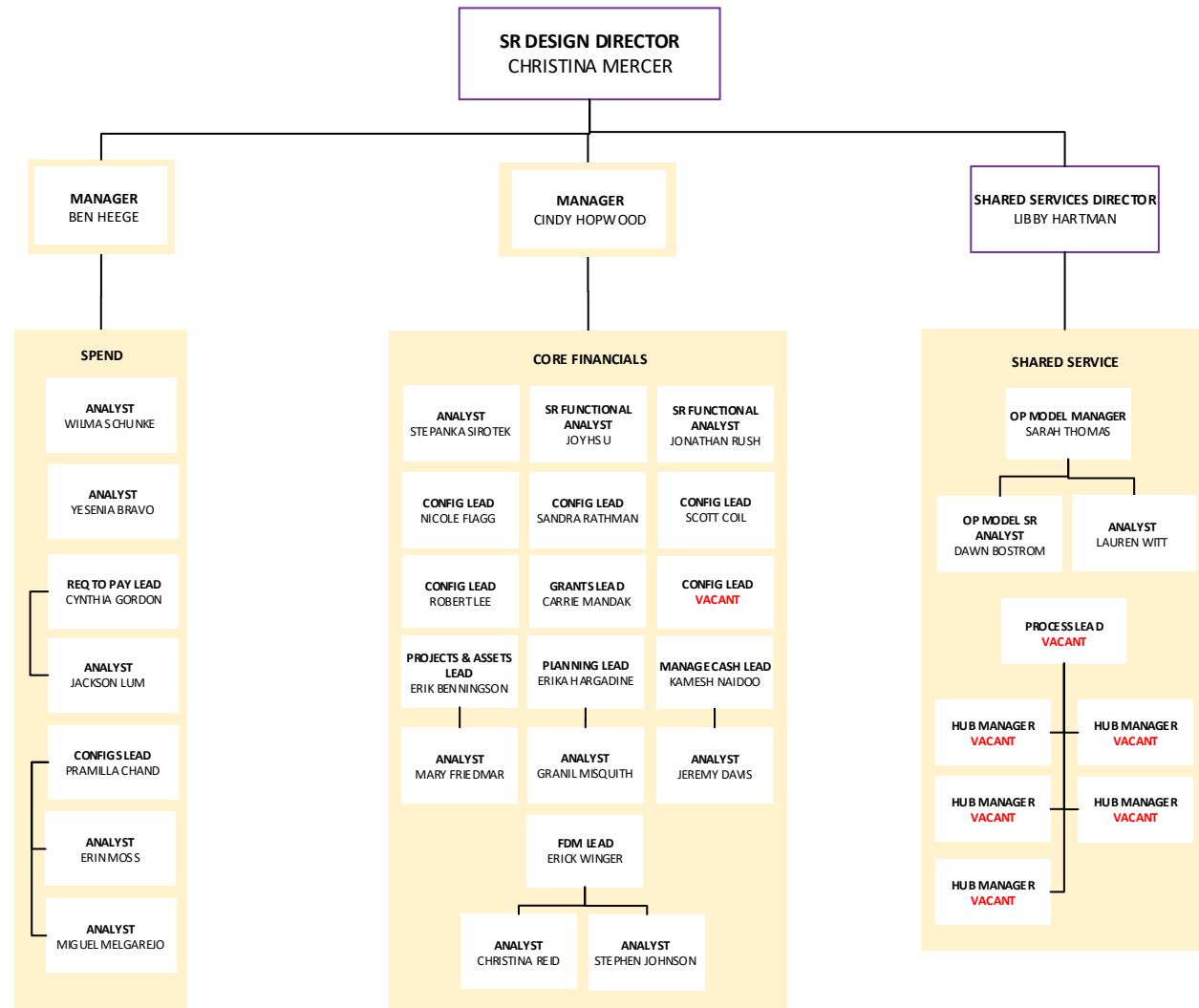
*IT & HR report to central Finance Shared Services

ASSISTANT VICE PRESIDENT
ED LOFTUS

FINANCE MANAGER
BETSY BRADSBY

PROGRAM DESIGN

CHANGE MANAGEMENT



ASSOCIATE VICE PRESIDENT
CHRIS MALINS

ASSISTANT TO THE AVP
MELANIE FRENCH

**INVESTMENT OPERATIONS &
INVESTOR RELATIONS**

ASSOCIATE TREASURER
ANN SARNA

CASH GOVERNANCE

ASSOCIATE TREASURER
ALANA ASKEW

**TREASURY CASH
GOVERNANCE**

SENIOR ANALYST
DANEL PHELPS

**ASSET LIABILITY
MANAGEMENT**

**SR ASSOCIATE
TREASURER**
ANNETTE SOMMER

ASSET LIABILITY

**ASSOCIATE
TREASURER**
SHANNON THOMPSON

SENIOR ANALYST
CHAD COOK

FINANCIAL ANALYST
TYLER BENSON

TEMP STAFF
MIA MARTINCIC

TREASURY OPERATIONS

ASSOCIATE TREASURER
ROBERT BRADSHAW

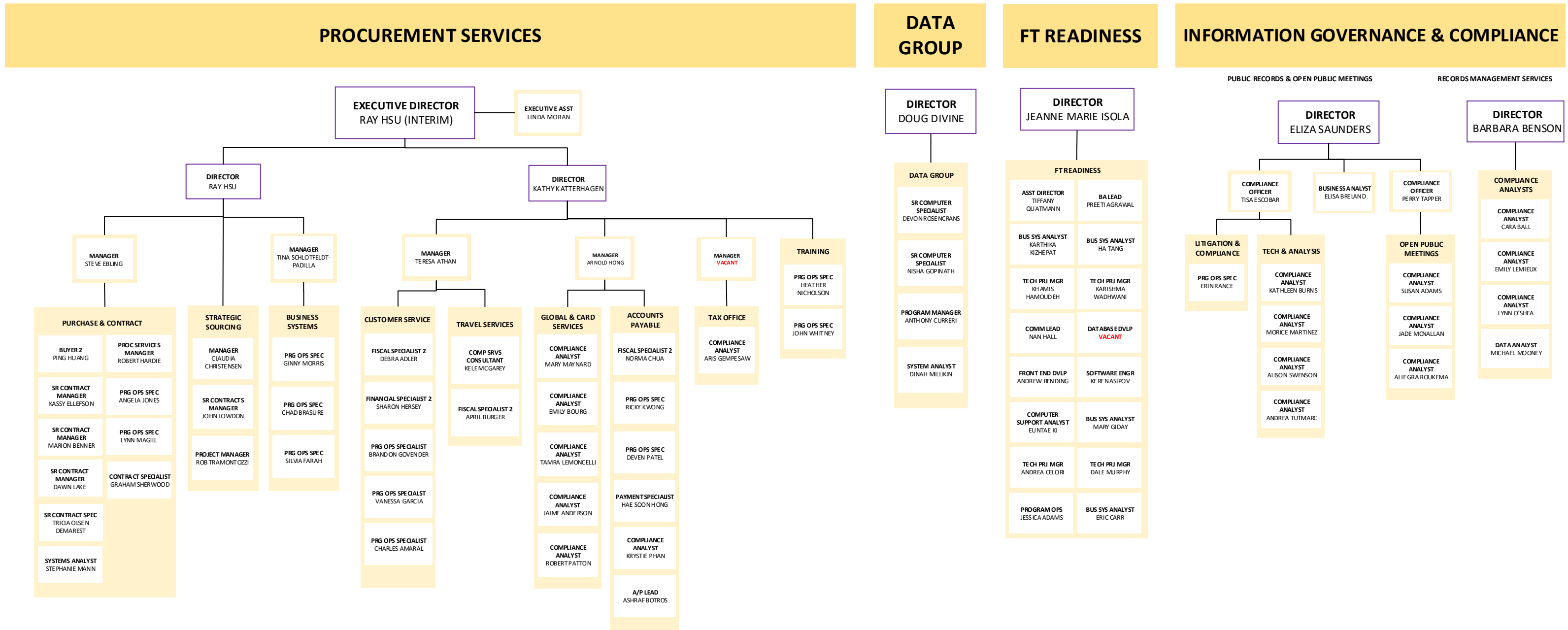
OPERATIONS

MANAGER
PING TAN

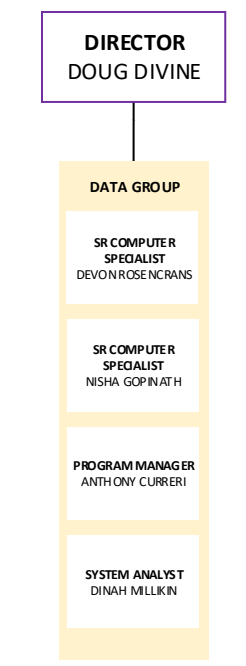
MANAGER
VIVIANNE YANG

FINANCIAL FORECASTING

ASSISTANT TREASURER
DAN PETERSON



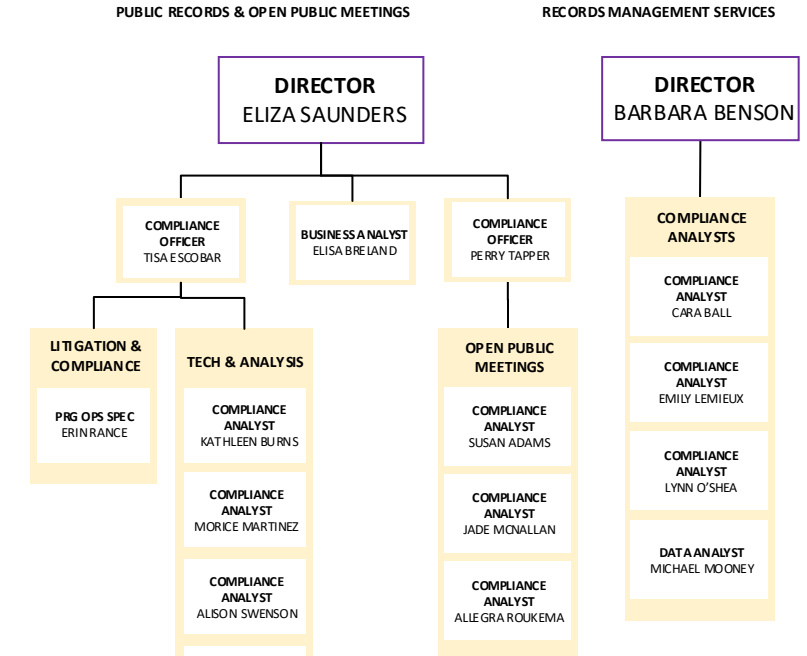
DATA GROUP



FT READINESS



INFORMATION GOVERNANCE & COMPLIANCE



ASSOCIATE VICE PRESIDENT
ANN ANDERSON

CREATIVE COMMUNICATIONS

