

UK
auctioneers.com
THE WORLD OF ANTIQUES AT YOUR FINGERTIPS

Fine Art, Antiques, Jewellery, Gold and Silver,
Porcelain and Quality Collectables

Thursday 11 July 2013 10:00

GERRARDS

Gerrards Auctioneers & Valuers

St Georges Road
St Annes on Sea
Lancashire
FY8 2AE



Lot: 2
Long Strand Of Cherry Amber Beads, Length 35 Inches, Each Bead approx 14mm Diameter. Early 20thC Weight 124 Grammes.
Estimate: £400.00 - £500.00



Lot: 21
18ct Gold Set Seven Stone Diamond Ring the diamonds of good colour & clarity. The diamond weight 75pts. Stamped 750.
Estimate: £350.00 - £400.00



Lot: 4
Indian Taj Mahal Plaque, Black Onyx With Mother Of Pearl Inlay Depicting The TAJ MAHAL. 56 x 72mm
Estimate: £30.00 - £40.00



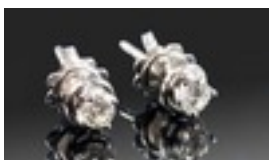
Lot: 23
9ct Gold Pearl Set Dress Ring, Fully Hallmarked, Ring Size K.
Estimate: £120.00 - £140.00



Lot: 7
The Order of Leopold Miniature Dress Medal, Diamond Set Miniature Medal In 18ct White Gold Set With Diamonds And Emeralds. Unmarked
Estimate: £300.00 - £360.00



Lot: 24
Tanzanite and Diamond Stud Earrings, each earring having eight marquise cut tanzanites surrounding a central diamond, in a star or flower shape, totalling 1.77cts
Estimate: £40.00 - £60.00



Lot: 12
18ct White Gold Diamonds Stud Earrings, Each Set With A Round Modern Brilliant Cut Diamonds, Stamped 750.
Estimate: £250.00 - £300.00



Lot: 25
Loose Gemstone 19.36ct brilliant Cut Tanzanite 16.40 x 16.03 x 11.06mm.
Estimate: £1,800.00 - £2,000.00



Lot: 19
Dark Cherry Amber Drop Earrings, each earring comprising two graduated oval ambers suspended from shepherd's hook fittings; 2 inch drop overall
Estimate: £30.00 - £40.00



Lot: 26
Cyma Fine Vintage 18ct Gold Manual Wind Wristwatch, Cymaflex, circa 1950, Brush silvered dial with applied gilt faceted arrow hour markings, polished round case, with snap on back, fitted gold plated bracelet, dial and movement signed, excellent order.
Estimate: £200.00 - £300.00



Lot: 20A
Edwardian 9ct Gold Stone Set Fobs, 2 in total. Plus a 9ct gold belcher chain and a Victorian gold coloured brooch. Set with central red stone.
Estimate: £120.00 - £150.00



Lot: 30
Ladies 9ct Gold Heart Shaped Diamond and Amethyst Dress Ring, fully hallmarked.
Estimate: £40.00 - £60.00



Lot: 31
18ct Gold Diamond Cluster Ring, flowerhead setting, 21 old brilliant cut diamonds, estimated 2 cts in total
Estimate: £500.00 - £600.00



Lot: 38
Very Fine Royal Jade and Diamond Pendant set in Platinum. Supported on a fine platinum chain. Excellent quality.
Estimate: £400.00 - £600.00



Lot: 32
Victorian George Angel Very Rare Matching Set Of Eight Silver Stemmed Drinking Glasses, with wheel etched star motif pattern to glass bowls, hallmark London 1862, makers mark 'G.A' George Angel, each 6" in height.
Estimate: £400.00 - £600.00



Lot: 39
A Ladies 9ct Gold Cased Watch and 9ct Gold Belcher Chain. c.1920's. Marked 9.375. Working order.
Estimate: £80.00 - £100.00



Lot: 33
Art Deco - Fine Slim 9ct Gold Open Faced Pocket Watch, with gold face, fingers and numbers, plus secondary dial. Full art deco lines. Good working order and fully hallmarked. 1.75 inches diameter.
Estimate: £280.00 - £320.00



Lot: 40
Rolex 18ct Gold Oyster Perpetual Datejust Gentlemans Wristwatch. Set with diamonds to dial. Chronometer. Oyster bracelet, Sapphire crystal glass. Excellent working order. Some lateral play between bracelet links. With Rolex box.
Estimate: £3,500.00 - £5,000.00



Lot: 34
Elgin - Fine and Impressive 14ct Gold Cased Art Deco Open Faced Pocket Watch. Fully hallmarked, excellent condition and working order.
Estimate: £350.00 - £400.00



Lot: 41
18ct Gold Ruby Ring, Set With A Single Old Cut Ruby Coloured, Blood Red Stone, Estimated Weight 1.34ct, Unmarked, Early 20thC. Ring Size M
Estimate: £220.00 - £240.00



Lot: 35
A Small Collection Of 9ct Gold Items, includes 2 9ct gold medals/fobs, fully hallmarked & 2 small 9ct gold bracelets. Fully marked. 9.3 grams.
Estimate: £80.00 - £100.00



Lot: 42
Rolex 18ct Gold Ladies Datejust Wristwatch. With diamond bezel. The dial pave set with diamonds & rubies. Excellent working order. With Rolex box.
Estimate: £3,000.00 - £4,000.00



Lot: 37
Gents 18ct Gold Set Single Stone Diamond Ring estimated 0.5ct. estimate colour G.H, estimated clarity VVS1. A quality diamond ring of good colour & clarity
Estimate: £500.00 - £600.00



Lot: 43
Yellow Amber Drop Earrings, oval drops on shepherd's hook fittings; 1.5 inch drop overall
Estimate: £25.00 - £45.00



Lot: 44
Tanzanite Hoop Earrings, a row of tanzanites down the front of each hoop and a further row down the inside back, giving the luxury of a full hoop presence of this single source gemstone, mined only in Tanzania, totalling 2.75 cts, the pierced ear fittings having clasp locks for extra safety; 1 inch drops
Estimate: £70.00 - £90.00



Lot: 49
Ladies Yellow Metal Stone Set Bracelet, Set With Polished Hard Stone Coloured Stones.
Estimate: £25.00 - £30.00



Lot: 45
18ct White Gold Emerald And Diamond Full Eternity Ring, Set With Alternating Round Modern Brilliant Cut Diamonds And Emeralds, Estimated Diamond Weight 1.20ct, Ring Size Q&Afrac12. Unmarked, Tests 18ct.
Estimate: £450.00 - £500.00



Lot: 50
German 18th/19thC Fluted Silver Punch Ladle, Turned Wooden Handle, Marked 14 For .875 Silver. Length 13 Inches.
Estimate: £50.00 - £70.00



Lot: 46
18ct Gold Mounted Micro Mosaic Brooch Depicting Saint Peter's Square, Set In Black Onyx, 18ct Gold Mount With Applied Floral Scrolls. Fully Hallmarked, 48 x 55mm Some Cracks To Back Of Onyx.
Estimate: £450.00 - £500.00



Lot: 51
Two Modern Fountain & Two Modern Ball Point Pens. As New Condition
Estimate: £20.00 - £30.00



Lot: 47
Victorian Style Pressed Pendant And Chain, With Bead And Rope Twist Decoration With Drop, Suspended On A Fine Link Chain, The Clasp With Rubbed Hallmark, Looks Like 15ct.
Estimate: £160.00 - £300.00



Lot: 53
14ct White Gold Diamond & Topaz Ring, Central Heart Shaped Blue Topaz (Approx 6.75cts) Surrounded By Round Cut Diamonds, Approx .50ct. Stamped 14K, Ring Size M.
Estimate: £550.00 - £600.00



Lot: 48
19thC Pressed Gold Brooch, With Two Central Amethyst Cabochons Above Small Rose Cut Diamonds Within A Raised Oval Edge, The Outer Quatrefoil Section Set With Small Seed Pearls And Rubies With Rope Twist Border, Unmarked, Some Small Stones Missing. 39 x 36mm
Estimate: £200.00 - £220.00



Lot: 54
Two Sustainable Coral Nugget Necklaces, one in classic coral pink, with slightly larger beads than the other, in crimson, each fastened with a magnetic clasp; pink 20 inches long, crimson 19.5 (2)
Estimate: £20.00 - £40.00



Lot: 55
14 Carat Gold Ceylon Ruby and Diamond Cluster Ring, the ruby 1.5 carats est weight, diamond 1.00 ct, estimate weight. Stamped 14k. Good quality ring
Estimate: £400.00 - £600.00



Lot: 56
Pink Pearl Cultured Necklace.
Length 17 Inches
Estimate: £30.00 - £40.00



Lot: 63
Very Fine Victorian Shell Cameo
Within a Gold Ornate Mount with
safety chain. Not marked but
tests gold. Classical subject. 2.25
inches high. Excellent quality.
Estimate: £100.00 - £150.00



Lot: 57
18ct Gold Diamond Solitaire
Ring, Set With A Round Modern
Brilliant Cut Diamond, Approx
.75ct, Commercial White Stone
With Minor Inclusions. Fully
Hallmarked, Ring Size N.
Estimate: £600.00 - £800.00



Lot: 64
William IV Scottish/Glasgow Very
Fine Set Of Six Matching Silver
Fiddle Pattern Large Table
Spoons, Hallmark Glasgow 1837,
makers mark, Alexander Mitchell
& George White, Glasgow
Silversmiths. Hallmarks are
excellent/mint. Each spoon 9" in
length. 16ozs, 4 grams. total
silver weight.
Estimate: £250.00 - £300.00



Lot: 58
18ct Gold Ring, Set With Three
Diamond Chips, Marked 18ct
Plat, Ring Size O
Estimate: £30.00 - £40.00



Lot: 65
A Size 7 Silver Thimble of
Chrysanthemum Head Design,
with a waffle girdle. Unmarked,
but tests silver. Also a French
measuring tape.
Estimate: £20.00 - £30.00



Lot: 59
Fine Quality Pressed
Tortoiseshell Garniture:
comprising a brooch in the shape
of a Maltese Cross, finely inlaid
with gold and silver floral pique
work, together with a pair of
pique work earrings. c 1840.
Estimate: £30.00 - £40.00



Lot: 66
Small Jadeite Bangle Of Good
Deep Green Colour, Outer
Diameter 54mm
Estimate: £50.00 - £60.00



Lot: 60
Long Rope of Ivory White
Baroque Freshwater Pearls, 60
inch long continuous strand of
lustrous pearls with small hand
tied knot between each
Estimate: £60.00 - £80.00



Lot: 67
Ladies 9ct White Gold Set Single
Stone Aquamarine Ring. Fully
hallmarked. Modern setting.
Estimate: £30.00 - £40.00



Lot: 61
Pierre Cardin. A Handsome
Sterling Silver Gilt Designer
Money Clip. Linear decoration to
the front and feature 'Pierre
Cardin' signature. Italian 925 and
Florence town mark to the
reverse.
Estimate: £50.00 - £70.00



Lot: 69
Ladies 9ct Gold Set Single Stone
Amethyst Ring. Fully hallmarked.
Estimate: £30.00 - £40.00



Lot: 71
 Queen Victoria Scottish/Glasgow
 Very Fine Silver Set Of Six
 Matching Tea Spoons with
 embossed shell topped pattern
 handles. Silver Hallmark
 Glasgow 1846. Makers Mark J.D
 for Scottish silversmith. 106
 grams, 3ozs 13 grams. Excellent
 Hallmarks.
 Estimate: £60.00 - £80.00



Lot: 80
 Cultured Freshwater Blue Pearl
 Long Rope Necklace, exceptional
 99 inch length of lustrous, bright,
 blue pearls, hand knotted
 between each one, continuous
 and without a clasp, can be worn
 in several rows around the neck,
 knotted Art Deco style, twisted
 into a torsade or any variety of
 ways
 Estimate: £80.00 - £120.00



Lot: 74
 Victorian Stick Pin, With Pearl
 Terminal, Length 68mm
 Estimate: £50.00 - £60.00



Lot: 82
 Yellow Citrine And White
 Sapphire Sterling Silver Ring,
 Oval Cut Citrine Approx 7.00cts
 Ring Size N
 Estimate: £70.00 - £80.00



Lot: 75
 Victorian Pressed Gold Fringed
 Brooch With Applied Rope Twist
 Decoration, The Brooch With
 Glazed Back, 77 x 48mm
 Unmarked.
 Estimate: £160.00 - £180.00



Lot: 83
 14ct Gold Diamond & Kunzite
 Ring, Central Pear Cut Kunzite,
 (Approx 11.00cts) Surrounded By
 Round Cut Diamonds, Approx
 .75ct. Stamped 14K, Ring Size P.
 Estimate: £550.00 - £600.00



Lot: 76
 Earring And Brooch Set In The
 Sentimental Style, Realistically
 Modelled Ladies Coral Coloured
 Hands, Set With Paste Stones
 And Gilt Mounts, The Earrings
 With 9ct Gold Fittings. Brooch
 Length 50mm
 Estimate: £160.00 - £180.00



Lot: 84
 Jorgen Jensen Pewter Cufflinks,
 Slightly Concave Boat Shape
 Form. Numbered 789.
 Estimate: £20.00 - £30.00



Lot: 77
 French Silver Paste Set Brooch,
 Of Floral Design With Three
 Drops. 47x45mm
 Estimate: £120.00 - £140.00



Lot: 85
 14ct White Gold Ruby &
 Diamond Ring, Set With An Oval
 Cut Ruby (Estimated Weight
 4.75ct) Surrounded By Round
 Brilliant Cut Diamonds, Estimated
 Weight. 75ct, Stamped 14k, Ring
 Size L½
 Estimate: £650.00 - £700.00



Lot: 79
 Art Nouveau 9ct Gold &
 Amethyst Pin/Brooch. Stamped
 9ct. Good period piece.
 Estimate: £40.00 - £60.00



Lot: 86
 Stuart Devlin, A Set Of Eight
 Silver And Silver Gilt Side Plates,
 Circular Form With A Textured
 Silver-Gilt Banded Border And
 Polished Rim, The Silver
 Polished Centres With Lightly

Plinished Surface, Diameter 23cm, Weight 104toz. (8) Fully Hallmarked For London C 1977
 Estimate: £1,600.00 - £1,800.00



Lot: 87
 Backler Scent Bottle Pale White Opaque Glass And Gold Mounted Perfume Bottle, Of Ovoid Form, Mounted With A Hinged Gold Cover With Push Button Catch. Backler Circular Makers Mark With A Flower Motif To Inside Of Cover. Height 92mm Mount Unmarked. c1880
 Estimate: £160.00 - £180.00



Lot: 88
 Small Mixed Lot Comprising Set Of Three Fish Servers, Silver Topped Sugar Caster, Pens & Mesh Purse.
 Estimate: £20.00 - £30.00



Lot: 89
 Misc Lot Of Costume Jewellery And Oddments, Four Boxes Comprising Compacts, Beads, Brooches, Quantity Of Jet, Paste Set Jewellery, Silver Thimbles Amber And Jade Coloured Beads etc.
 Estimate: £80.00 - £120.00



Lot: 90
 White Cultured Akoya Pearl Necklace Length 18 Inches.
 Estimate: £30.00 - £40.00



Lot: 91
 Modern Reproduction Wall Clock - Daytona Display Wall Clock. Battery Operated. 13.5 inches diameter. Sold A/F
 Estimate: £100.00 - £150.00



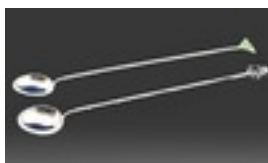
Lot: 92
 9ct charm bracelet loaded with 23 good quality gold charms. Both bracelet and charms fully hallmarked. Weight 82grams.
 Estimate: £800.00 - £1,200.00



Lot: 93
 Musical Compact, Enameled Hinged Front With An Image Of A Stagecoach, Integral Mirror, Plays 'Let Me Call You Sweetheart'. Together With One Other, The Front Inset With Mother Of Pearl Style Panels.
 Estimate: £40.00 - £50.00



Lot: 95
 Pair Of George III Pewter Candlesticks Each Raised On An Unusual Square Shaped Slightly Sunken Base, The Knopped Straight Stem Rising To A Lozenge Shaped Socket, With Pushers. Height 9 Inches, Unmarked, But Appears To Have Possible Name In Gilt Erased From Beneath The Knop. c1780
 Estimate: £600.00 - £800.00



Lot: 96
 An Unusual Pair Of Oriental Long Handled Silver & Jade Spoons. Each with a small oval bowl and a stem in the shape of bamboo. The finial of one carved as a dark green jade buddah and the other a paler green bat. Marked 'Sterling Silver, Made in H.K' (Hong Kong) with makers mark. 7.5" in length.
 Estimate: £70.00 - £100.00



Lot: 97
 Rolls Royce Vintage Quality Silvered Car Mascot "Flying Lady". Mark R.R. Ltd. reg. US PAT Office. 5.75 inches high.
 Estimate: £100.00 - £120.00



Lot: 98

Himalayan Blue Kyanite Triple Strand Necklace, three rows of the denim blue semi-precious stone mined in the Nepal area of the Himalayas; several of the beads display shimmer, the flashes of silvery inner light this stone can be known for; the necklace is fastened with a sterling silver lobster claw clasp; 17.5 inches long
Estimate: £40.00 - £60.00



Lot: 103

Multistrand Cultured Freshwater 'Floating Pearl' Necklace, six strands of peach, pale lilac and white pearls, in a random pattern of various sizes, strung on fine cord, giving the illusion that the pearls are floating without support; strands drawn together with sterling silver terminals and lobster claw clasp; 18 inches long
Estimate: £30.00 - £40.00



Lot: 99

An Edinburgh Crystal Bedside Clock. Marked 'Edinburgh Crystal' to the dial & etched mark to the base.
Estimate: £20.00 - £40.00



Lot: 104

Very Fine KPM Berlin Porcelain Plaque, a three-quarter length portrait of a 19th century young woman holding a rose. Set within an ornate gilt frame with incised scepter and capital KPM marks to reverse. Includes frame 10.25 x 6.25 inches.
Estimate: £500.00 - £600.00



Lot: 100

A Good Set Of Six Chinese Silver Spoons. Each with a realistic leaf bowl bamboo shape stem & pierced floral handle. Chinese character marks to the reverse.
Estimate: £70.00 - £100.00



Lot: 106

Platinum Diamond Solitaire Ring, Set With A Square Modified Brilliant Cut Diamond. Fully Hallmarked, Ring Size I. Comes With A GIA Diamond Report Stating The Diamond Weight .46 carat. E Colour And Si1 Clarity.
Estimate: £800.00 - £1,000.00



Lot: 101

An Egyptian Silver And Niello Scent Holder. Mango shaped on a pedestal foot with a flame type screw stopper containing an integral spatula. One side decorated with a camel and the other a building. Unmarked but tests silver. 4" in height.
Estimate: £40.00 - £60.00



Lot: 107

Gents 9ct Gold Diamond Set Ring, Central Star Set Diamond Approx .25ct, Unmarked, Ring Size S, Weight 12.3 Grammes.
Estimate: £180.00 - £220.00



Lot: 102

Set of six dessert knives and forks in Sterling silver with mother of pearl handles. Hallmarked Thomas Levesley of Sheffield 1897.
Estimate: £400.00 - £500.00



Lot: 109

9ct Gold Ruby Ring Set With Three Rubies Between Two Diamonds. Unmarked, Ring Size K
Estimate: £80.00 - £100.00



Lot: 110

The Worshipful Company Of Cutlers. A Scarce Silver Medal Of Oval Shape below a silver bar suspension and maroon ribbon. The front featuring in bold relief

an elephant and castellated Howdah and surrounded by laurel leaves. These are the alms of the Ancient Company of Cutlers founded in 1416. The reverse engraved to admit as a liveryman Samuel Cuthbert Rexford Welch on 20th January 1937. The company motto 'Pour Parvenir A Bonne Foy' (to succeed through good faith) below.
Estimate: £70.00 - £100.00



Estimate: £60.00 - £80.00

Lot: 116

A Silver Lidded Circular Jewellery Box. Hallmarked Birmingham 1923. 4.25 inches diameter. Total weight 352 grams. Tip of one leg missing.
Estimate: £100.00 - £120.00



Lot: 111

Edwardian Boxed Set Of Six Silver Tea Spoons & Matching Silver Sugar Nips, Hallmark London 1901, 94.9 grams. Excellent condition.
Estimate: £30.00 - £40.00



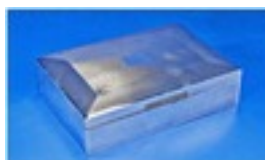
Lot: 117

Art Deco Circular Silver Bowl with Reeded Borders. Hallmarked Sheffield 1932. Markers mark F.C.R. 2 inches high, 4.5 inches diameter. Est. 7 ozs.
Estimate: £80.00 - £100.00



Lot: 112

Art Deco Silver Cased Circular Shaped Desk Clock Stand. Hallmarked Sheffield 1939. 5.5 inches high. Clock not original to period.
Estimate: £80.00 - £120.00



Lot: 118

A Good Quality Lidded Silver Table Cigarette Box, by E.V. Viner of Sheffield. Cedar wood interior and engine turned cover. Hallmarked Sheffield 1964. 4.5 inches deep, 1.5 inches high and 6.5 inches diameter. Total weight 575 grams, 18ozs 17 grams.
Estimate: £120.00 - £150.00



Lot: 113

Art Deco Silver Sugar Sifter. Hallmarked Birmingham 1932. 5ozs, 9grams. 7 inches high.
Estimate: £100.00 - £120.00



Lot: 118B

Silver Retro Witchball By Comyns Table Cigarette Lighter. Hallmark London 1964. 3" in height.
Estimate: £80.00 - £120.00



Lot: 114

Edwardian Silver Christening Mug with scroll handle and ribbed half body. Hallmarked Birmingham 1903. 109.2 grams.
Estimate: £60.00 - £80.00



Lot: 119

Charles Horner Silver Very Fine Pair Of Sugar Tongs, Makers mark C.H. 37.9 grams. 5 3/8" in length.
Estimate: £80.00 - £100.00



Lot: 115

Edwardian Two Handle Silver Porringer with ornate pierced handles and half ribbed body. Hallmarked Sheffield 1905. 4 inches diameter, 4 ozs 4 grams.



Lot: 120
 A 1930's 9ct Gold Swivel Fob, Citrine supported on a fancy 9ct gold chain. Chain length 26". Hallmark Birmingham 1936. Total weight 24.7 grams, Chain weight 9.3 grams.
 Estimate: £150.00 - £200.00



Lot: 126
 Very Fine George III Miniature Portrait Painting On Ivory Of A Georgian Gentleman, within an oval brass frame. The man wearing a black jacket and cravat, white shirt & highly decorated waistcoat. Overall size 3x2.5"
 Estimate: £120.00 - £150.00



Lot: 121
 Very Fine 19th Century Dutch Ecclesiastical Style Pair of Silver Apostle Serving Spoons. With barley twist handles and gilt bowls. The makers mark M.G. plus town and silver marks. The terminals depicting two figures. Each 7.25 inches in length. 4ozs.
 Estimate: £100.00 - £150.00



Lot: 127
 Very Fine Early 20th Century Miniature Enamel On Metal, portrait of a young woman, set in the lid of a fine ormolu oval box. The box heavily chased and decorated with velvet interior. 2.5x3.25"
 Estimate: £150.00 - £200.00



Lot: 122
 A Silver Two Handled Table Lighter of interesting form. Hallmarked Birmingham 1913. Makers mark A & Co. 4 ozs. 4.25 inches long
 Estimate: £60.00 - £80.00



Lot: 128
 Very Fine George III Portrait Miniature On Ivory Of A Georgian Gentleman within a green leather wallet with two hook fastening and of the period. The man wears a blue coat with two gilt buttons, high white collar, in two points, on face. White cravat and waistcoat. The man has short brown hair, brushed onto high forehead. Blue eyes looking straight ahead. 3.5x3"
 Estimate: £150.00 - £200.00



Lot: 123
 Victorian Fine Silver Art Nouveau Christening Mug. With shaped and flared base. Hallmarked London 1862. Makers mark R.H. 3 ozs 2 grams. 3 inches high
 Estimate: £60.00 - £80.00



Lot: 129
 Fine Early 19th Century Portrait Miniature On Ivory Of A Young Lady With Long Blonde Hair and a blue ribbon in hair, wearing a necklace and white shawl. Set within a square brass frame. 3x2.5" overall.
 Estimate: £100.00 - £150.00



Lot: 124
 Revue Thommen Landmark Chronograph Stainless Steel Gents Watch, Number 5811001 with rotating bezel, working order and good condition. Bought in Singapore in 1990 for Â£500. With receipt.
 Estimate: £100.00 - £150.00



Lot: 130
 Early 20th Century Fine Portrait Miniature Of A Young Lady In 19th Century Dress, brown hair with long ringlets either side of face. Low cut white dress, with centre flower. Signed to right of portrait and set within an oval polished wooden frame with brass set flowers to borders. 4.5x3"
 Estimate: £80.00 - £120.00



Lot: 125
 Very Fine KPM Style Miniature Portrait Painting On Porcelain Of A Young Girl Carrying School Books within a carved wooden black forest period frame. Circa 1900-1910. 4.5x3.5". Includes frame.
 Estimate: £150.00 - £180.00



Lot: 132

A Fine Early 19th Century Hand Painted Portrait on Ivory, of a lady seated on a decorated settee wearing a French style wig with flower decoration. Pale green dress, elbow length sleeves-lace edging to sleeve. Low cut dress with white shawl collar. Set within an ornate brass oval table frame and blue border. 8.5 by 5 inches.
Estimate: £200.00 - £250.00



Lot: 137

Mrs. Wallis Simpson/ Duchess of Windsor Modern Copy Metal and Enamel Pill Box in the form of a turtle. Cartier style. 3.5 inches long.
Estimate: £20.00 - £40.00



Lot: 133

George III - Comical Hand Painted Papier Mache Lidded Snuff Box. Painting of cockerel and chick to lid. "Does Your Mother Know You're Out". 3 inches wide, 1 inch high.
Estimate: £60.00 - £80.00



Lot: 138

Walker and Hall - Silver Two Handed Pedestal Bowl. With openwork borders. Circular stepped base. Hallmarked Birmingham 1911. 22.5 ozs. 9.25 inches diameter and 4.75 inches high.
Estimate: £250.00 - £280.00



Lot: 134

14ct White Gold Diamond & Ruby Ring, Central Oval Cut Ruby, (Approx 7.50cts) Set Between Two Round Cut Rubies(Approx 1.50cts) Surrounded By Round Cut Diamonds, Approx .50ct. Stamped 14K, Ring Size L½.
Estimate: £850.00 - £950.00



Lot: 139

18ct Gold Three Stone Diamond Ring, Set With A Central Modified Cushion Cut Between Two Round Cut Diamonds. Estimated Diamond Weight 1.00ct. Gallery Setting, Stamped 18c, Ring Size M.
Estimate: £850.00 - £950.00



Lot: 135

Victorian Ladies Ornate Silver Locket. Supported on a fancy albertina chain. Hallmarked Birmingham 1884. Albertina chain 10.5 inches in length.
Estimate: £80.00 - £120.00



Lot: 140

Hardstone Bead Necklace, 23 Inch Cornelian Necklace, Approx 15mm Diameter Beads, Possibly Scottish, Early to Mid 20thC
Estimate: £60.00 - £80.00



Lot: 136

Swiss Technomarine - Gents Stainless Steel Chronograph Wrist Watch with black rubber strap and alarm facility. Number 10001135. As new condition.
Estimate: £150.00 - £200.00



Lot: 141

Rose Quartz, Freshwater Pearl and Pink Crystal Necklace and Earring Set, two strands held by two triangular Balinese style terminals and fastened by a lobster claw clasp, comprising smooth rose quartz nuggets, white baroque cultured pearls and faceted pink crystals, with matching earrings on shepherd's hook fittings; necklace 20 at shortest strand, earrings 2.25 inch drop
Estimate: £25.00 - £45.00



Lot: 142
Art Deco Platinum Diamond Ring, Millegrain Set Round Modern Cut Diamond, Surrounded By Tapered Cut Sapphires, Three Round Diamonds To Each Shoulder, Diamond Weight .62ct, Unmarked, Most Likely To Be Platinum., Ring Size M $\frac{1}{2}$
Estimate: £1,200.00 - £1,400.00



Lot: 147
18ct White Gold Diamond Dress Ring, Set With A Central Row Of 8 Princess Cut Diamonds Set Between Two Rows Of 24 Round Modern Brilliant Cut Diamonds. Estimated Diamond Weight 2.00ct, Ring Size M $\frac{3}{4}$.
Estimate: £900.00 - £1,000.00



Lot: 143
Four 18ct Gold Sapphire and Diamond Rings, including 1 white gold and 2 yellow(4)
Estimate: £90.00 - £120.00



Lot: 148
John Elkan Colonial Open Faced Silver Pocket Watch. Hallmarked Birmingham 1894. Working order. Good condition. Dial 1.75 inches diameter.
Estimate: £40.00 - £60.00



Lot: 144
White Cultured Pearl Two Row Bracelet, slightly domed lustrous coin pearls woven onto jeweller's elastic, interspaced with small silver beads; 6.5-8 inches long
Estimate: £20.00 - £30.00



Lot: 149
American Watch Co. Waltham, Ladies Fine Quality Gold Plated Hunter Pocket Watch with embossed floral decoration to front and back, with beaded and reeded borders. c.1900. Height 2.25 inches.
Estimate: £60.00 - £80.00



Lot: 145
Tanzanite Cluster Bracelet, 11.25 carats of round, faceted tanzanite in lozenge shaped clusters, each of nine stones, in a line bracelet, fastened with a box and tongue clasp, with a figure of 8 safety catch to both sides for extra security; a high carat of this brilliant, sparkling gemstone, found only in Tanzania in the 1960's, named and promoted as Tanzanite by Tiffanys, New York; 8 inches long
Estimate: £160.00 - £200.00



Lot: 150
20th Century Fema English Brass 8 Day Carriage Clock, with visible escapement and jewellery movement. Lever platform escapement. Stands 6.75" in height. Excellent quality & working order.
Estimate: £80.00 - £100.00



Lot: 146
Platinum Diamond Cluster Ring, Central Round Modern Cut Diamond, Surrounded By Smaller Round Diamonds In An Art Deco Style Open Work Design, Estimated Diamond Weight 1.00ct, Stamped Pt, Ring Size N $\frac{1}{2}$
Estimate: £1,500.00 - £1,600.00



Lot: 151
18ct Gold Emerald And Diamond Ring, Set With A Central Cushion Cut Emerald, Surrounded By Eight Old Cut Diamonds, Unmarked, Tests High Carat Gold, Ring Size L. Looks To Be Late 19thC
Estimate: £380.00 - £420.00



Lot: 152
18ct Gold and Diamond Dress Ring, sunflower shaped cluster
Estimate: £55.00 - £75.00



Lot: 154
Five Various 9ct Gold Diamond Dress Rings, 4 yellow and 1 white gold(5)
Estimate: £100.00 - £130.00



Lot: 160
Edwardian Pair of Silver Corinthian Column Candlesticks, on stepped square bases. Hallmarked Birmingham 1907, rubbed hallmark. Loaded bases. Each 6 inches high.
Estimate: £80.00 - £120.00



Lot: 155
Turquoise Statement Pendant Necklace, large circular piece of Mojave Desert mined turquoise, shaped from the centre hole, both back and front to be slightly thinner, spreading out to the thickest point, then sloping downwards to the smoothly curved edge and stabilised; a substantial pendant, 2.5 inches in diameter, on a strand of matching, round turquoise beads, held in place by the beads forming a bale through the centre hole; necklace 20 inches plus 'bale' and pendant a further 2.75 inches
Estimate: £40.00 - £60.00



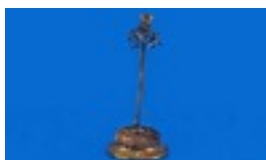
Lot: 161
Victorian Silver Open Faced Chronograph Pocket Watch. Hallmarked Birmingham 1883. Makers mark CV. Interesting watch, good working order.
Estimate: £100.00 - £120.00



Lot: 162
Victorian Mother of Pearl Hinged Spectacle Case. 6 inches length.
Estimate: £40.00 - £60.00



Lot: 156
18ct Gold Solitaire Diamond Ring.
Estimate: £100.00 - £120.00



Lot: 163
A Scottish Combined Ring Tree & Hatpin Holder. Brass with plush pad to the round base and a faux citrine set to the top. Circa 1910
Estimate: £30.00 - £40.00



Lot: 157
9ct Gold Diamond Cross and Chain.
Estimate: £90.00 - £110.00



Lot: 164
A Heavy Quality Swedish Silver Beaker. Raised 'Royal' Swedish insignia to the outside and marked to the base 'The Royal Trophy'. Sterling & 1970 date symbol. Makers mark for Borgila, 3.9ozs.
Estimate: £60.00 - £80.00



Lot: 158
Selection of Various Cufflinks, including seven sets and various oddments.
Estimate: £20.00 - £30.00



Lot: 165
A Quality Lead Crystal And Silver Bell. Mushroom shaped silver handle with central knob and deep cut diamond shape frieze to the main body of the bell. Hallmarked for Birmingham 2000 by D. and P.B. 5 inches tall.
Estimate: £50.00 - £70.00



Lot: 166

A Good Heavy Pair Of Victorian Silver Ladles Of Plain Form With Round Bowls. Hallmarked For London 1899 by G.J.D.F. 5.9ozs. Estimate: £80.00 - £120.00



Lot: 171

Lapis Lazuli Mounted Brooch, Set With Four Large Polished Stones In A Yellow Metal Unmarked Mount. Length 70mm Estimate: £140.00 - £180.00



Lot: 167

White Freshwater Keshi Pearl Necklace, single strand fastened with a sterling silver lobster claw clasp; with the greatest natural lustre of any pearl, Keshi pearls are 100% nacre, having formed without the nucleus of round or other types of pearl and therefore appear as organic shapes; becoming rare to find; 18 inches long Estimate: £30.00 - £50.00



Lot: 172

Continental High Carat Gold Amethyst Set Ring, Square Setting Moulded Edge With Fleur De Lys Style Moulded Shoulders, Triangular Faceted Amethyst Approx 1.13ct In A Closed Back Setting, Ring Size K Estimate: £320.00 - £360.00



Lot: 168

Three Quality Russian Silver Gilt & Niello Spoons. Each finely nielloed to both sides with rose briars. 875 marks for 1921-1958 period and cyrillic makers mark. Estimate: £60.00 - £80.00



Lot: 173

Swiss Movement, Tissot, Ladies Seastar Watch. New battery 2012. Collectors Item. Estimate: £20.00 - £40.00



Lot: 169

Opal And Sapphire Drop Earrings, Each Set With An Oval Opal Above A Sapphire And Pear Shaped Opal, The Opals Showing Good Flashes Of Blues And Greens, Estimated Opal Weight 9.00ct Total Drop 53mm Estimate: £1,500.00 - £1,600.00



Lot: 174

A Danish Silver Caddy Spoon. The handle with a depiction of the town of Helliggeist Naestved. Oval bowl. Marked for Copenhagen 1930 by maker J. Wolmer. Also mark of Jens Sigsgaard (who worked latterly for Georg Jensen.) Estimate: £40.00 - £60.00



Lot: 170

18ct White Gold Diamond And Sapphire Earrings, Set With A Central Round Sapphire Surrounded By Six Millegrain Set Round Brilliant Cut Diamonds, Open Work Flower Head Design, Diameter 12mm. Stamped 750 Estimate: £420.00 - £460.00



Lot: 175

An Egyptian Silver Box. Shaped rectangular with overhanging floral clasp and silver gilt interior and inset hinge. The lid with delicate stripe and diaper pattern. Arabic marks for 900 standard with Cairo mark and a date letter 'I'. Circa 1930. 3 inches by 2.5 inches. Estimate: £60.00 - £80.00



Lot: 178

Arizona Turquoise Graduated Spherical Bead Necklace and Earring Set, the Mojave Desert mined turquoise ranging in size from 15mm wide down to 5mm, with earrings comprising three

each of the middle range of stones; necklace 20.5 inches long, earrings 2 inch drop
 Estimate: £40.00 - £60.00



Lot: 184
 Loose Gemstones, Collection Of Sapphires. Estimated Weight 15.44cts
 Estimate: £120.00 - £140.00



Lot: 179
 A Good Quality Continental Silver Ladies Cigarette Case. Fine engine turned case with silver gilt interior. Mark for 800 standard and maker K.R., probably Austrian. c.1930. 3.5 ozs.
 Estimate: £60.00 - £80.00



Lot: 185
 Loose Gemstones, Large Oval Faceted Citrine Coloured Gemstone. Estimated Weight 93cts
 Estimate: £30.00 - £40.00



Lot: 180
 Loose Gemstones, Collection Of Nine Cushion Cut Green Peridots, Approx 9.00ct
 Estimate: £30.00 - £40.00



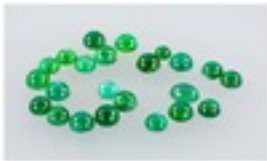
Lot: 186
 Strand Of Early 20thC Cultured Pearls, Of Slightly Graduating Form Ranging From 6mm To 2.8mm, Length 18 Inches, Silver Marcasite Set Clasp, Marked 935, Complete With Safety Chain.
 Estimate: £70.00 - £80.00



Lot: 181
 Loose Gemstones, Collection Of Seven Emerald Cut Emeralds.
 Estimated Weight 11.32cts
 Estimate: £120.00 - £140.00



Lot: 187
 Chinese Fine Canton Export Ivory Card Case, with fine carved Chinese figures and floral decoration, c.1840's. Excellent condition. 4.5 by 3 inches.
 Estimate: £300.00 - £500.00



Lot: 182
 Loose Gemstones, Collection Of 23 Round/Oval Cut Emeralds.
 Estimated Weight 11.60cts
 Estimate: £120.00 - £140.00



Lot: 188
 White Gold Pearl And Diamond Ring, Central 10mm Pearl, Set Between 12 Round Cut Diamond Set Shoulders. Unmarked, Ring Size M¼
 Estimate: £160.00 - £180.00



Lot: 183
 Loose Gemstones, Collection Of Rubies. Estimated Weight 18.07cts
 Estimate: £120.00 - £140.00



Lot: 189
 Turquoise Stone and Green Crystal Statement Necklace, Arizona mined turquoise ovoid stones spaced on five strands of green 'Aurora Borealis' crystal, held in place by a five loop slider clasp; 21 inches at shortest length
 Estimate: £40.00 - £60.00



Lot: 190

Pair Of Regency Papier Mache Face Screens, The Shaped Screens With Embossed Broad Border, With Central Floral Needlework, The Reverse With A Red Lacquered Leaf Design, Supported on Turned Gilt Handles. Height 16 Inches. Estimate: £220.00 - £260.00



Lot: 200

Gruen Watch Co Gents Steel Wristwatch, Barrel Shaped Curvex Dial With Gilt Arabic Numerals And Hands With Subsidiary Seconds, 35 x 20mm Steel Case With 10ct Gold Filled Bezel, Marked 482 Calibre 410, Serial Number 4959229. Later Leather Strap And Buckle, Working Order At Time Of Cataloguing But Not Tested For Accuracy. All Watches And Clock Sold As Found Estimate: £60.00 - £80.00



Lot: 193

9ct Gold Tanzanite Cross and Chain, together with a 9ct gold tanzanite ring. Estimate: £100.00 - £120.00



Lot: 201

W M Forbes Gents Stainless Steel Wristwatch, 37mm Case, White Dial With Three Subsidiary Dials And Moonphase, Quartz Movement, Leather Strap, Estimate: £60.00 - £80.00



Lot: 197

Four White Metal Figures, two dogs, two cats and a pin cushion in the form of an early shoe. Estimate: £30.00 - £50.00



Lot: 202

Waltham Open Faced Pocket Watch, White Enamelled Dial With Roman Numerals And Subsidiary Seconds, 46mm Plated Case, Movement Numbered 24120073. Together With A Gents Visodate Automatic Seastar Seven, Silvered Dial With Gilt Batons And Date Aperture. Working Order At Time Of Cataloguing But Not Tested For Accuracy. All Watches And Clocks Sold As Found. Estimate: £40.00 - £60.00



Lot: 198

Swiss Crusader 9ct Gold Cased Manual Wind Wrist Watch with compensated movement. Hallmark 1941 supported on a rubber ribbon strap. Working Order At Time Of Cataloguing But Not Tested For Accuracy. All Watches And Clock Sold As Found Estimate: £80.00 - £120.00



Lot: 203

A Modern Replica Tag/Heuer Mikrotimer 1/1000th Precision Chronograph Gents Wristwatch on a heavy stainless steel bracelet. Estimate: £60.00 - £80.00



Lot: 199

Gents 18ct Gold Audemars-Piguet Wristwatch, Circa 1980, Automatic Movement BA5378 61296, 18ct Yellow Gold, The Cushion Shaped Case with Smooth Bezel, Dark Blue Metallic Finish Dial, With Applied White Enamelled Roman Numerals And Hands, Date Aperture At 3 O'clock, Black Crocodile Strap, 18ct Gold AP Buckle, Comes Complete With Original Paperwork/Certificate Dated 1980, Leather Pouch, Box And Various Audemars Piguet Paperwork Estimate: £1,500.00 - £1,800.00



Lot: 204

Ladies Stainless Steel Copy Wristwatch, Complete With Box. Estimate: £20.00 - £40.00



Lot: 205
 Very elegant mid 70's silver tankard in 17th century style with flat thumb grip, bird's head handle, baluster style body on a round stepped base. 356 grams
 13 cm high, 9.2 cms wide excluding handle.
 Estimate: £270.00 - £320.00



Lot: 209
 Butler & Wilson Style Pair of Octagonal Blue and Austrian Crystal Earrings, the large brilliant, deep blue faceted octagons held in hexagonal frames of two rows of clear Austrian crystals and suspended from inverted pear shaped bales; 2.75 inch drops overall
 Estimate: £20.00 - £40.00



Lot: 210
 Sekonda Diamond Set Gilt on Stainless Steel Gents Wrist Watch. Model no 03522. Boxed, as new condition
 Estimate: £40.00 - £60.00



Lot: 211
 Triumph Ingersoll Open Face Pocket Watch With White Enamelled Dial And Arabic Numerals, Centre Seconds, 51mm Chrome Case. Working Order At Time Of Cataloguing But Not Tested For Accuracy. All Watches And Clock Sold As Found
 Estimate: £25.00 - £30.00



Lot: 213
 Victorian Fine Shell Cameo In A Gold Openwork Frame Pendant/Brooch. Not marked but tests as gold. 2" in height.
 Estimate: £60.00 - £80.00



Lot: 215
 Multicolour Agate, Gemstone and Faceted Crystal Four Strand Necklace, the gemstones including amethyst, apatite, peridot, citrine and garnet; the



Lot: 220
 Peacock Blue/Black Keshi Pearl Necklace, brilliant high natural lustre, organic shaped, freshwater pearls, formed without the nucleus of round pearls and increasingly rare to find; 18 inches long, fastened with a sterling silver lobster claw clasp
 Estimate: £30.00 - £50.00



Lot: 225
 Butler & Wilson Style Fox Head Crystal and Mesh Necklace, the fox head encrusted to the front with clear Austrian crystals with two faceted black marquise eyes, the back of filigree heart shapes, suspended on a white metal chain within a black mesh tube, fastened with a lobster claw clasp; mesh chain 30 inches plus 2.25 inch extender chain, pendant 2.25 from bale top to nose tip
 Estimate: £30.00 - £40.00



Lot: 226
 Welsh Interest . A traditionally carved treen love spoon by Huw Jones, original label attached. 14 inches long.
 Estimate: £20.00 - £30.00



Lot: 227
 Selection of Costume Jewellery contained in an onyx box.
 Estimate: £20.00 - £40.00



Lot: 228
 Welsh Interest. A good Mauchlinware sycamore jewellery box. Square shape with blue padded interior. The hinged lid centred with a view of Caernarvon Castle and each

corner hand painted with flowers and foliage.
 Estimate: £50.00 - £70.00



Lot: 239
 Fine Quality Russian Lacquered Oval Shaped Box. Beautifully painted and illustrated to the front with a scene from the folk story 'Tale of the Crystal Lake' from Russian mythology. Fully signed to the front. Twentieth. 5 inches by 2.5 inches.
 Estimate: £50.00 - £60.00



Lot: 230
 Black Hyalithglas German Lidded Bowl. Very evocative of the era this 1958 piece of designer glass is in beautiful condition and is a fine example of this type of glass which was very popular in the 1950/1960's and which was first produced in the Eighteenth century using manganese oxide mixed with cobalt.
 Estimate: £50.00 - £60.00



Lot: 240
 Garrard The Crown Jewellers Pair Of Silver Jubilee Goblets 1977, The Queens Beasts Limited Edition Goblets, Numbered 27 Of 250 Pairs Made. Complete In Fitted Case With All Paperwork/Documentation.
 Estimate: £250.00 - £350.00



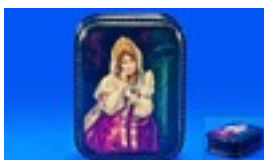
Lot: 231
 Four 9ct Gold Dress Rings.
 Estimate: £100.00 - £120.00



Lot: 241
 Champagne Austrian Crystal Necklace and Earring Set, V shaped, multiple row, slightly curved, flexible necklace set with brilliant champagne colour crystals, fastening with a lobster claw clasp onto an extender chain, plus matching 3 row graduated drop earrings; necklace up to 18 inches long, earrings 1.75 inch drop
 Estimate: £30.00 - £40.00



Lot: 233
 Cultured Freshwater Peacock Pearl Necklace and Bracelet, highly lustrous peacock pearl drops on a double link chain to both necklace and matching bracelet; necklace 24 inches, bracelet 7.5
 Estimate: £25.00 - £45.00



Lot: 242
 An Extremely Fine Quality Russian Lacquered "Papier - Mache" Table Box. Hand painted with a beautiful girl in traditional dress, highlighted with gold. Fully signed to the front of the box. Mid 20th century. 3.5 by 2.75 inches.
 Estimate: £100.00 - £150.00



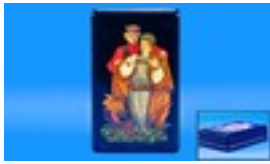
Lot: 234
 Butler and Wilson Style Turquoise Crystal Flower Necklace and Earrings, the necklace comprising three large flowers of faceted crystals, with a hint of Aurora Borealis highlights, to the centre front on a double strand of similar smaller beads and fastening with a decorative seniorita clasp, the earrings comprise three larger and a cluster of smaller beads to match the necklace; necklace 18 inches, earrings 2 inch drop
 Estimate: £40.00 - £60.00



Lot: 243
 A Fine Quality Russian "Papier - Mache" Oval Shaped Box. Painted to the front with 3 figures in fairy tale style illustrations of Russian mythology. Finely executed illustrations in enamel colours. Fully signed to the front. 20th century. 4 by 3.75 inches.
 Estimate: £100.00 - £150.00



Lot: 237
 Unworked Whale Tooth, Mounted On A Wooden Base. length 6 Inches, Early 20thC
 Estimate: £30.00 - £50.00



Lot: 244

A Russian "Papier-Mache" Lacquered Box of the Highest Quality and Craftsmanship. Beautifully painted with a loving couple, draped in fine clothing. Inlaid with Mother of Pearl and decorated. Fully signed to the front of the box. Mid 20th century. 5.25 by 3.25 inches. Estimate: £150.00 - £250.00



Lot: 253

10ct Gold Set Three Stone Aquamarine and Diamond Dress Ring. Stamped 10k. Estimate: £60.00 - £80.00



Lot: 246

Turquoise Nugget Necklace, organic shaped pieces with an abundance of matrix, polished to smooth rough edges but left as natural looking as possible, strung in a single row fastened with a sterling silver lobster claw clasp, and with an extender chain finished with a round turquoise bead; 17 inches long plus 2 inch extender Estimate: £30.00 - £40.00



Lot: 256

Four Various Silver Amateur Sporting Medallions, all hallmarked Estimate: £60.00 - £80.00



Lot: 247

Small Quantity of Silver, comprising two silver charm bracelets, one ID bracelet and four various rings, total weight 195 grams. Estimate: £70.00 - £90.00



Lot: 266

A 1950's Silver Cigarette/Jewellery Box, engine turned top. Presented by Whitbread Ltd. Hallmarked Birmingham 1956. 1.75 inches high, 6.75 inches wide, 4 inches deep. Total weight 595.8 grams. Estimate: £100.00 - £120.00



Lot: 250

14ct Gold Dress Ring, Set With A Cabochon Cut Stone, Marked T.Z.YEH 14 K, Ring Size N Estimate: £60.00 - £80.00



Lot: 268

Agate, Hematite and Crystal Asymmetric Necklace, long, statement style with a variety of green and black agate stones, hematite circles, clusters of green, purple and teal crystals, a large pale green mother-of-pearl circle and further aurora borealis crystals; 31 inches long Estimate: £25.00 - £35.00



Lot: 252

Norway Stainless Steel Cheese Slicer, with ivory handle in a shape of a tusk. With a box. 8.5 inches long. Estimate: £20.00 - £40.00



Lot: 269

Collection Of Various Cabinet Plates Estimate: £10.00 - £15.00



Lot: 275

Box Containing A Quantity Of Costume Jewellery, Complete Mix To Sort Comprising Bangles, Rings, Beads, Compacts etc. Estimate: £100.00 - £120.00



Lot: 276

Silver Handled Ornate and Embossed Set of Fish Servers, comprising 6 forks, 6 knives, plus a large pair of servers, with shell decorated handles, hallmarked for Sheffield 1928, boxed, good condition.

Estimate: £100.00 - £120.00

Estimate: £20.00 - £25.00



Lot: 295

Vintage Limit III 9 Carat Gold Case Gents Wristwatch with gold plated expanding bracelet. Good condition and working order.

Estimate: £60.00 - £75.00



Lot: 277

Edwardian Silver Set of Six Spoons with matched pair of sugar nips. Hallmarked Birmingham 1915. Boxed. 54.7 grams.

Estimate: £50.00 - £60.00



Lot: 297

Garrard's Oak Cased Canteen of Cutlery, containing a six place set, the lid inscribed to top B.T.R. Industries Ltd, Presented to B. Carey, for 25 years service, 1937 - 1962, the box rim with makers label 'Garrard and Company Limited' raised on splayed plinth feet.

Estimate: £60.00 - £80.00



Lot: 282

Silver Dressing Table Brush Set, comprising hair brush, two clothes brushes and a hand mirror, all decorated with engine turned decoration to silver, all hallmarked for Birmingham 1920, with maker's stamp of Williams of Birmingham Ltd.

Estimate: £60.00 - £75.00



Lot: 302

Selection of 14 Various Silver Plated Spoons, together with a five pewter measures.

Estimate: £20.00 - £30.00



Lot: 283

A Collection of Agate Necklaces. Various Colours and Shades. Black and Grey. 4 inches

Estimate: £60.00 - £80.00



Lot: 303

James Deakin And Sons EP Spirit Kettle And Stand, In The Christopher Dresser Style. Height 12½ Inches.

Estimate: £50.00 - £60.00



Lot: 284

Eight Various Silver Coins including Christian X, King of Denmark, 2 Kroner in 925S mount, 2 x half crowns, 1906 & 1916, sixpences etc.

Estimate: £20.00 - £30.00



Lot: 304

Quantity Of Mostly Low Value Pennies & Post 1947 Coins.

Estimate: £20.00 - £30.00



Lot: 294

Trebex Vintage Gents Classic 10 Carat Gold Plated Oval Cased Mechanical Wrist Watch fitted to a gold plated expanding bracelet. The dial as raised gold numerals and hands. Good looking watch in good condition and working order.



Lot: 306
 Silver Thimble In Leather Case, silver wishbone sugar tongs, silver Apostle spoon. Together with a cased set of enamel buttons.
 Estimate: £50.00 - £60.00



Lot: 312
 Ebony Walking Cane, with a silver bulbous handle to top, hallmarked for London 1920, 35 inches high.
 Estimate: £40.00 - £60.00



Lot: 307
 Pair of Mid Victorian Silver Plated Candlesticks, with detachable sconces, raised on turned supports with baluster and ring knobs, supported on spreading bases, baized undersides, each 9½ inches high.
 Estimate: £20.00 - £40.00



Lot: 313
 Chinese Nineteenth Century Very Fine Pair of Ivory Hand Carved and Reticulated Vases, raised on black carved wooden stands depicting figures in continuous garden scenes. Each 8.5 inches high.
 Estimate: £300.00 - £360.00



Lot: 308
 9ct Gold & Enamel Mayoress Medal/Brooch. Central Enamelled Borough Of Nelson Coat Of Arms, Named And Dated To Reverse 1969-70. Fully Hallmarked, Height 42mm
 Estimate: £140.00 - £160.00



Lot: 314
 George III Fine and Old Handsome Pair of Old Sheffield Plate Tankards c 1780. Makers Thomas Law and Co. Each 6.5 inches high.
 Estimate: £200.00 - £240.00



Lot: 309
 Fine Indian Handmade Circular Lidded Silver Pill Box, of high grade, early 20th century, with very fine filigree work, 1.25 inches high and 2 inches in diameter, 56.5 grams.
 Estimate: £40.00 - £60.00



Lot: 317
 9ct Gold Gemset Dress Ring, Set With Six Amethyst Coloured Stones And Two Seed Pearls, Fully Hallmarked For Birmingham U 1919? Ring Size P, Worn Condition.
 Estimate: £65.00 - £75.00



Lot: 310
 Danish Early 20th Century Silver Lidded Peppermint Box, the cover decorated in high relief, musical figures in a Carribean landscape, 2.25 inches wide.
 Estimate: £40.00 - £60.00



Lot: 319
 Swiss Silver Ornate and Chased Ladies Open Faced Pocket Watch. Silver mark 93.5, working order. Plus a silver Zenith open faced pocket watch in good working order.
 Estimate: £40.00 - £60.00



Lot: 311
 Small Jewellery Lot comprising vintage coral necklace, part branch, part rondelle beads, 18 inches long, yellow amber necklace, 25 inches long, 2 lady's marcasite cocktail watches, 1 by Vidar, 1 by Limit International(4)
 Estimate: £30.00 - £50.00



Lot: 322
 Fuchsia Mother of Pearl Cuff Bracelet, three flowers of mother of pearl petals centred by a cluster of round beads similar, wired onto a wide memory wire cuff wrapped with comfort coated cord, embellished with 2 pairs of gold colour bead flowers; fits a



large variety of wrist sizes
 Estimate: £20.00 - £40.00

Lot: 323
 Silver Plated Spirit Kettle on Stand, in the Regency style, 13 inches high.
 Estimate: £40.00 - £60.00



Lot: 343
 A Good Meiji Period 1868-1912 Ivory Parasol handle, decorated with carved lions.
 Estimate: £120.00 - £150.00



Lot: 326
 Victorian Fine Quality Silver Ladle. Hallmarked London 1885. Makers mark JA - TS. 13.5 inches in length, approx 8ozs. In excellent condition.
 Estimate: £120.00 - £180.00



Lot: 344
 A Mid Nineteenth Century American Saliorwork Scrimshaw decorated Whales Tooth. Incised decoration of an American three mast whale ship flying the stars and stripes. 5 inches in length.
 Estimate: £400.00 - £480.00



Lot: 331
 Collection of Assorted Ladies Fashion Watches.
 Estimate: £20.00 - £40.00



Lot: 354
 Silver Handled Butter Knife, the handle decorated with the Kings pattern, boxed, with booklet.
 Estimate: £35.00 - £45.00



Lot: 332
 A Fine Quality Chinese one piece Ivory Carving of Quan Yin holding a basket of flowers in one hand and a pearl in the other. Deeply carved drapery to her dress and skirt. The hair at one time stained black of fine patination, 11 inches high. Nineteenth Century
 Estimate: £400.00 - £500.00



Lot: 355
 Siam Sterling Silver Bangle, The Front With Five Applied Discs With Rope Twist Decoration The Central Three Set With A Turquoise Cabochon, Weight 72 Grammes.
 Estimate: £100.00 - £120.00



Lot: 356
 Carved Ivory Lion Figure, 7 inches long.
 Estimate: £15.00 - £20.00



Lot: 342
 A Silver Bracelet Loaded With 11 Silver And Enamel European Town Crests. Stamped 800. 23 grams.
 Estimate: £20.00 - £30.00



Lot: 357
 Small Collection Of Low Value Coins, Comprising Crowns, Commemorative etc. Some Silver.
 Estimate: £20.00 - £30.00



Lot: 358

Selection of Hot Diamonds Rhodium plated sterling silver modern jewellery including real diamonds. Includes 7 1/2" chain with plaque, 16" chain with plaque and a split mirror and lustre finish cross. Also included are three suede cords for hot Diamond bracelets. (Two boxes)
Estimate: £80.00 - £100.00



Lot: 367

Ebony Early Twentieth Century Elephant Figure with ivory tusks and toes, 7.5 inches high.
Estimate: £30.00 - £40.00



Lot: 362

Swarovski Ladies Wrist Watch, cream strap, square face.
Estimate: £20.00 - £40.00



Lot: 368

Pewter Tankard with Oriental dragon decoration together with jewellery box with two compartments and Oriental dragon design to front panel.(marks to base).
Estimate: £30.00 - £40.00



Lot: 363

Box Containing a Collection of Jet Beads and Brooches, etc.
Estimate: £15.00 - £30.00



Lot: 369

Carved Jade Style Necklace and Pendant.
Estimate: £30.00 - £40.00



Lot: 364

Four 'Old Hall' Stainless Steel Jugs, comprising pair of 2pt lidded jugs, 1pt lidded jug and a 1/2 pint open jug.
Estimate: £20.00 - £30.00



Lot: 370

Two Carved Style Bone Beads.
Estimate: £30.00 - £40.00



Lot: 365

Misc Lot Of Costume Jewellery And Oddments, Comprising Simulated Pearls, Chains, Pendants, Brooches, Badges etc
Estimate: £40.00 - £50.00



Lot: 371

Art Deco Six Piece Dressing Table Set, comprising two brushes, comb, powder pot, mirror and a tray, all with foliage patterned backs.
Estimate: £20.00 - £30.00



Lot: 366

An oriental 20th century bone construction of a garden temple of traditional style. Raised on a stepped base. Height 13.26 inches.
Estimate: £150.00 - £200.00



Lot: 372

American Early 20th Century 24 Piece Set of Silver Handle Fruit Knives and Forks. The silver handles with embossed stylized decoration. Not marked but tests silver.

Estimate: £100.00 - £150.00



Lot: 400

Royal Doulton Vintage Character Jugs 2 in total. 'John Barleycorn' style one. D5327. Handle inside jug. Designer Charles Noke. Both Jugs issued 1934-39. Each 6.5" in height. Both jugs in excellent condition & 1st quality.

Estimate: £30.00 - £40.00



Lot: 373

The Steiff Company, American Silversmiths Early 20th Century Set of Six Ornate Silver Handle Knives. Each knife stamped sterling, each with embossed floral handle.

Estimate: £40.00 - £60.00



Lot: 407

Royal Doulton 'Blue Children' Series Ware Small Vase, tapering column shape with slightly bulbous base, above a low foot, with two sinuous gilt handles at the start of the column, the printed scene being a girl clutching a doll and talking to a frog, the pair sitting on a log in a rural background; 6 inches high; c1910, plus pair of Keeling & Co., Burslem, flow blue, Willow Pattern small platters with gilt rims; each 9.5 inches in diameter; c1888 (vase a/f firing fault to lower right front and small chip to rim)(3)

Estimate: £30.00 - £50.00



Lot: 374

Mahogany Canteen of Six Fish Knives and Forks, with ivory handles.

Estimate: £30.00 - £50.00



Lot: 408

Royal Doulton Vintage Toby Jug. Jolly Toby-handle riding crop. D6109, issued 1939-60. With rare blue/grey breeches. Designer Harry Fenton. Height 6 inches. First quality and mint condition.

Estimate: £20.00 - £30.00



Lot: 395

Quantity of Costume Jewellery including brooches, necklaces, pearls, bracelets etc

Estimate: £30.00 - £40.00



Lot: 409

Royal Doulton -C.J. Noke Figure. 'Calumet' HN1689. Designer C.J. Noke. Issued 1935 - 49. Height 6.5 inches. Mint Condition.

Estimate: £100.00 - £150.00



Lot: 396

Victorian Ebony Dressing Table Set (4) pieces comprising mirror, glove stretchers, hair tidy and trinket pot.

Estimate: £15.00 - £20.00



Lot: 398

Early 20th Century Carving Set, boxed, together with two Art Deco beakers, with a spoon and cake slice.

Estimate: £10.00 - £20.00



Lot: 410

Royal Doulton Character Jugs, 2 in total. 1) "Farmer John"-style one. Handle inside jug. D5788. Designer Charles Noke, issued 1938-. Height 6.5 inches. 2) "Old King Cole"-var two. Designer Harry Fenton. D6036, issued 1939-1950. Height 5.5 inches. Both jugs are 1st quality and in mint condition.

Estimate: £20.00 - £40.00



Lot: 411

Royal Doulton Character Jugs, 3 in total. 1) "Don Quixote", D6455, issued 1971-1991. Height 7.25 inches. 2) "Neptune", D6548, issued 1961-1991, height 6.5 inches. 3) "Bacchus", D6499, issued 19959-1991, height 7 inches. All jugs are 1st quality and in mint condition.
 Estimate: £40.00 - £60.00



Lot: 422

Royal Doulton Figures, 2 in total. 1) Valerie-style one HN2107, height 4.75 inches. Excellent condition. 2) Vanity, HN2475, Height 5.25 inches, excellent condition.
 Estimate: £30.00 - £40.00



Lot: 412

Royal Doulton Prestige Figure 'Shall We Dance'. HN 5056. 2007.12 inches in height. Limited edition 13/500. Original presentation box, as new. Certificate included.
 Estimate: £40.00 - £60.00



Lot: 424

Carlton Ware Hand Painted Dish 'Sultan' Design On rouge royal ground. Circa 1950's. 8.5" in diameter.
 Estimate: £20.00 - £30.00



Lot: 418

Royal Crown Derby Imari Pattern Cylindrical Vase. Circa 1870's. 3.75" in height plus a Royal Crown Derby model of a coal scuttle. Date 1907. 3.5" in height.
 Estimate: £30.00 - £50.00



Lot: 425

Royal Doulton figures 2 in total. 1. 'Lydia' HN 1908 Issued 1939 Height 4.75 inches. 2. 'Autumn Breezes' HN 1934 Issued 1940 - 1947 Height 7.5 inches. Both figures are in excellent condition.
 Estimate: £40.00 - £60.00



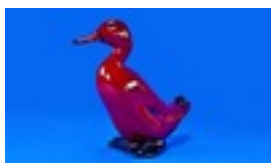
Lot: 420

Royal Doulton Early Flambe Monkeys Group Figure. Label to base. 2.5 inches high.
 Estimate: £100.00 - £150.00



Lot: 426

Royal Crown Derby Paperweight Kingfisher, gold stopper. Date 2001. 1st quality & mint condition. With box. 4.5" in height.
 Estimate: £30.00 - £40.00



Lot: 421

Royal Doulton Flambe Duck Figure. Stands 6.25 inches high.
 Estimate: £60.00 - £80.00



Lot: 427

Royal Crown Derby Paperweight 'Dolphin'. Gold Stopper. Date 1990. 6.75 inches in length.
 Estimate: £30.00 - £40.00



Lot: 428

Royal Crown Derby Old Imari Cup & Saucer, rare shape. pattern number 1128, date 2003. Boxed, mint quality & mint condition.
 Estimate: £40.00 - £60.00



Lot: 429
 Royal Crown Derby Imari Teapot, dated 1911, with printed mark to underside, 7½ inches high, overpainting present.
 Estimate: £40.00 - £60.00



Lot: 435
 Royal Doulton Flambe Ware Bull Dog Figure A/F. 4" in height.
 Estimate: £30.00 - £40.00



Lot: 430
 Royal Doulton Series Ware 'Nursery Rhymes G -Toys' Jug, D4016, Poyntz shape, decorated in polychrome with two scenes, 'There Was A Little Man And He Had A Little Gun' and 'Three Blind Mice See How They Run' with the Toys and Trees border above; 3.5 inches high; 1918-34
 Estimate: £20.00 - £40.00



Lot: 437
 Doulton Lambeth/Slater Pair of Fine Chine Ware Vases 1890's. Raised Floral Decoration on a Chine Ground. Each Vase stands 17.5 Inches High
 Estimate: £120.00 - £150.00



Lot: 431
 Royal Doulton Figure Mr. W.S.Perley as Charley's Aunt. Black printed marks. 7 inches high.
 Estimate: £80.00 - £120.00



Lot: 438
 Royal Doulton Vintage Small Character Jugs, 3 in total. 1. Jester D5556, issued 1936-60. 3.25" in height, designer Charles Noke, 2. Tony Weller, D5530, Issued 1936-60. 3.25" in height. 3. Sam Weller, D5841, Issued 1948, 3.5" in height. All jugs are in excellent condition.
 Estimate: £20.00 - £40.00



Lot: 432
 Royal Crown Derby Exclusive Ltd Edition Paperweight, no. 749 'Guppy' gold stopper. 1st quality and in mint condition. With certificate and box. 5 inches in height.
 Estimate: £150.00 - £180.00



Lot: 439
 Royal Doulton Collection of Disney's 101 Dalmations' boxed figures (6) boxes comprising a Cruella De Vil. DMI 6 inches high, Pongo DM6, Rolly DM4, Patch in Basket DM, Perdita DM7 and Penny Yawning DM2.
 Estimate: £60.00 - £80.00



Lot: 433
 Shelley China Part Tea Set, comprising 11 cups, 11 saucers, 12 side plates, milk jug and sugar bowl, all in the 'Dainty' shape, all white, with gilt handles, each stamped to undersides with Registration No. '272101', post 1896 / Early 20th Century. (36).
 Estimate: £40.00 - £60.00



Lot: 440
 Royal Doulton Early Figure 'Falstaff' HN 2054, Designer C.J.Noke. Issued 1952-1992. 7" in height. Excellent condition.
 Estimate: £20.00 - £40.00



Lot: 434
 Doulton Lambeth Studio Pottery Vase, decorated in browns & blues. Incised to the base is the potter marks. Numbered 'WP233' 1884 'IR'. 6" in height.
 Estimate: £60.00 - £80.00



Lot: 441
 Royal Doulton Figure 'The Foaming Quart' HN 2162, designer M.Davies. Issued 1955-1992. 6" in height. Excellent condition.
 Estimate: £20.00 - £40.00



Lot: 442
 Royal Doulton Character Jug
 "Vicar of Bray", D5615, issued
 1936-1960. Designer Charles
 Noke. 6.75 inches high. 1st
 quality and mint condition.
 Estimate: £20.00 - £30.00



Lot: 448
 Royal Doulton Character Jug
 'Gladiator' D6553. Designed by
 Max Henk, Issued 1961-1967. 4"
 in height.
 Estimate: £20.00 - £40.00



Lot: 443
 Royal Doulton Character Jugs, 2
 in total. 1) "The Gardener",
 D6630. Designer David B. Biggs.
 Handle spade and vegetables.
 Issued 1973-1981. Height 7.75
 inches. 2) "Veteran Motorist",
 D6633. Designer David B. Biggs.
 Handle horn. Height 7 inches
 high. Issued 1973-1983. Both
 jugs are 1st quality and in mint
 condition.
 Estimate: £20.00 - £30.00



Lot: 449
 Royal Dux/ Eichler Majolica
 Figure Group, young couple in
 18th century dress seated on a
 wooden bench, the gentleman
 with a violin in one hand and a
 music book under his left arm,
 the lady with a book under her
 right arm and holding a closed
 fan in her left hand, all standing
 on a rectangular 'lawn' supported
 by a cream and gilt, restrained
 Baroque base; 8 inches high x
 6.5 wide x 4 deep; rare black
 printed crowned Royal Dux,
 Bohemia acorn mark with capital
 E within; Franklin Porcelain
 'Marie Antoinette' figure plus
 Royal Doulton figure 'Suzette',
 HN 1487(a/f displaced parts,
 badly glued)(3)
 Estimate: £40.00 - £60.00



Lot: 444
 Royal Doulton character jugs 3 in
 total. 1. Merlin - handle Owl
 D.6529 Issued 1960 - 98 height
 7.25inches. 2. Mark Twain
 D.6654 Issued 1980 -90. height
 7.5 inches 3. Mine Host D. 6468
 Issued 1958 - 82 height 7 inches.
 All jugs are in excellent condition.
 Estimate: £40.00 - £60.00



Lot: 450
 Collection of Royal Doulton
 Ceramics comprising 'Sairey
 Gamp' Character Jug, 'The
 Huntsmen' Character Jug.
 Estimate: £30.00 - £40.00



Lot: 445
 Royal Doulton Character Jugs, 3
 in total. 1) "Paddy", D5753,
 issued 1937-1960. Designer
 Harry Fenton. Height 6 inches; 2)
 "Parson Brown", D5486, issued
 1935-1960, plain handle, 6.5
 inches high; 3) "Auld Mac",
 D5823, issued 1937-1960,
 designer Harry Fenton. 6.25
 inches high. All jugs 1st quality
 and excellent condition.
 Estimate: £30.00 - £40.00



Lot: 451
 Royal Doulton Dog Figure "The
 Retriever", on ceramic plinth,
 DA112. Designer G. Tongue.
 Issued 1990-95. Height 7.5
 inches.
 Estimate: £30.00 - £40.00



Lot: 446
 Royal Doulton Figure 'The
 Tinsmith' HN2146. Issued 1962 -
 67. Designer M. Nicol. Height 6.5
 inches.
 Estimate: £60.00 - £80.00



Lot: 452
 Royal Doulton Figure "Past
 Glory"- HN2484. Designer M.
 Nicoll. Issued 1973-79. Height
 7.5 inches. Excellent condition.
 Estimate: £60.00 - £80.00



Lot: 453
Royal Doulton Figure "The Boatman"-Skylark HN2417. Designer M. Nicoll. Issued 1971-87. Height 6.5 inches. Excellent condition.
Estimate: £40.00 - £60.00



Lot: 460
Goebel Hand Painted Bird Figures, 2 in total. 1). "Budgerigar 1218". Height 6.78 inches. Date 1973. 2). "Thrush", date 1970. CV115. Height 6.5 inches.
Estimate: £40.00 - £60.00



Lot: 454
Lladro Figure "Boy from Madrid". Model number 4898, issued 1974-1997. Height 8.5 inches.
Estimate: £20.00 - £40.00



Lot: 461
Royal Worcester Hand Painted Silver Rimmed Ashtray. Hallmark London 1912, the painted central panel of two grouse in a moonlit setting. Signed James Stinton. Date 1931. 1.5" in height, 4.5" in diameter.
Estimate: £80.00 - £120.00



Lot: 455
Lladro Figure "Boy with Lute". Model number 1231, issued 1972-88. Height 8.5 inches.
Estimate: £20.00 - £40.00



Lot: 462
Clarice Cliff Hand Painted Conical Shaped Sugar Sifter. c.1930's. "Leaves" design. 5.75 inches tall.
Estimate: £120.00 - £150.00



Lot: 456
Lladro Figures, 2 in total. 1). Boy with Horn, model number 4540. Height 6.25 inches. 2). Boy with Horn, model number 4540. Height 6.25 inches.
Estimate: £30.00 - £40.00



Lot: 463
Royal Worcester China Works Hand Painted Blush Ivory Basket and Miniature Jug, each with floral decoration, circa 1885, basket 4 inches high, the jug 2.5 inches high.
Estimate: £20.00 - £30.00



Lot: 457
Royal Crown Derby Imari Pattern Vase. Circa 1960. 5.25" High.
Estimate: £40.00 - £60.00



Lot: 465
Royal Worcester Hand Painted and Signed Two Handled Loving Cup. The centre panel with a "Fruits" still life. Signed Chivers, date 1905. 6 inches high.
Estimate: £120.00 - £150.00



Lot: 459
Troika Brick Shaped Vase. Signed to underside Troika, Cornwall, England, plus monogram. 9 inches high.
Estimate: £60.00 - £80.00



Lot: 466
Royal Worcester Hand Painted Miniature Vase, cock and hen pheasants in a woodland setting. Signed by James Stinton. Date 1914. 3.75" in height.
Estimate: £60.00 - £80.00



Lot: 467
Royal Worcester Pair of Hand Painted Blush Ivory Miniature Mugs, each with floral decoration, dated 1898, each measuring 1½ inches high.
Estimate: £30.00 - £50.00



Lot: 472
Very Fine Large Size Crown Devon Fielding's Rural Lusterine Bowl. Finely gilded and painted with butterflies interlaced on a lustrous body. No rubbing, pristine condition. 10 inches diameter, 2.75 inches high.
Estimate: £200.00 - £300.00



Lot: 468
Mintons Reproduction of a Pair Sevres, Louis XV Period, Rams Head Handled Vases. From King Edward VII's collection, c.1905-10. Each stands 7 inches high.
Estimate: £120.00 - £150.00



Lot: 473
Royal Worcester Handpainted Blush Ivory Helmet Shaped Jug, date 1902. 5 inches high, nick to neck rim.
Estimate: £10.00 - £20.00



Lot: 469
Royal Worcester Hand Painted Bowl 'Fruits' Still Life Apples and Grapes. Signed A Shuck. Date 1928. 5.5 inches in diameter and 2.75 inches high.
Estimate: £100.00 - £120.00



Lot: 474
Royal Worcester Figure 'Rosalind' HN 2393. Issued 1970-75. Height 5.5 inches.
Estimate: £20.00 - £30.00



Lot: 471
Minton Majolica Four Handled Vase, the body of goblet shape on a low, knopped circular spread foot; from the base of the bowl rise four panels of Prussian blue anthemion on a chocolate brown ground, with dark honey colour raised framing, which crosses in a twist at the top and forms the four bifurcated handles which rise outwards and slightly above the rim to attach to the impressed band of blue circles just below the rim; between each of these handles a green leaved, white flower springs from between the anthemion panels and reaches to an inch below the rim, the whole on a turquoise blue ground; the base reflects the colours of the main body in miniature anthemion, beribboned laurel leaves, fluting and weave; the interior in lilac/pink; 9 inches high x 4.75 in diameter excluding handles; impressed Minton and date mark for 1861
Estimate: £200.00 - £240.00



Lot: 476
Minton Majolica Figural Candlestick, a naked putto, holding a sheaf of bullrushes by his right hip, supports the candle sconce, which is formed from the top of the sheaf, with his left hand; around his waist a pale blue ribbon holds a small quiver on his left hip, as he stands on a green and brown mottled mound, supported on a Royal blue, yellow and brown circular plinth; 12 inches high; impressed Minton and date mark for 1863(a/f)
Estimate: £100.00 - £120.00



Lot: 477
Hadleys Worcester Hand Painted Two Handled Vase. "Roses" Still Life. c.1880's. Height 7.75 inches.
Estimate: £60.00 - £80.00



Lot: 478
 Burmantofts Hand Decorated Art Nouveau Seahorse Jardiniere and pedestal stand c 1900. Strong colourway and good condition. 35 inches in height. Estimate: £200.00 - £240.00



Lot: 486
 Foley Intarsio Squat Two-Handled Vase, wide, continuous band of blue/green waves to the centre, hand painted with two fish to front and back, between the two terracotta coloured applied handles, a pattern of sand coloured scallop shells to the base and just below the flared neck, which is terracotta inside and out with a ring of stylised waves in deep blue, to the inside; 3 inches high x 4.5 at widest; Foley crowned W & Co, Intarsio, Rg.No. 330286 to underside Estimate: £150.00 - £170.00



Lot: 479
 Chamberlain's Worcester Fine Two Handled Large Lidded Vase, 'Regent' body. Circa 1811-1820. Printed marked for Chamberlain's Worcester. Vivid colours. Rare piece. Stands 19.25" in height. Restoration to handles & lid. Estimate: £200.00 - £250.00



Lot: 487
 Wade "Blow-Up" Figure 'Tramp', Character From The Disney Hat Box Series. Produced by Wade During 1961-1965. The figure Measures Approximately 6 inches In Height. Estimate: £40.00 - £60.00



Lot: 480
 Royal Worcester Water Carrier Figure date 1917. Water jar has some damage. 11.5 inches in height. Estimate: £60.00 - £80.00



Lot: 488
 Royal Worcester Hand Finished Flared Vase. 'Oriental River Scene' Reg.Number 633033. Date 1918. 7.5" in height. Excellent condition. Estimate: £80.00 - £100.00



Lot: 483
 Royal Worcester Small Hand Painted Fruits Footed Bowl, apples and berries design, signed 'Roberts', dated 1936, 4.5 inches in diameter. Estimate: £60.00 - £80.00



Lot: 489
 Lorna Bailey Early Handpainted and Signed Limited Edition Fan Fare Wall Pocket no 25/60. With old Ellgreave Pottery backstamp. Mint Condition. 8.5 inches in length. Estimate: £30.00 - £50.00



Lot: 484
 Mintons Five Piece Late Nineteenth Century Lustre Dressing Table Set 'Rotique' pattern c 1900. Each piece 3 inches tall. Estimate: £40.00 - £50.00



Lot: 491
 Rare Pair Of Robinson & Leadbeater Bisque Decorated Figures, 2 compelling 19th Century child labour series statues, one titled '6am', shoe shine boy, the other '6pm', Evening Standard Newspaper boy, both stamped with the company mark R.L in ovoid cartouche to the back. Circa 1880's. Each 13" in height. Estimate: £200.00 - £300.00



Lot: 485
 Clarice Cliff 1930's Handpainted Platter 12.5" in diameter, Odilon Gravy Boat 3" in height and Plate 8" in height. (3) pieces in total. 'Sunshine' pattern, circa 1931. Estimate: £40.00 - £60.00



Lot: 492
Lorna Bailey Early Handpainted and Signed Large Charger 'Chetwynd' design with old Ellgreave pottery backstamp. 13.25 inches in diameter. Mint condition.
Estimate: £60.00 - £80.00



Lot: 499
Royal Worcester Hand Painted Two Handled 'Roses' Footed Bowl. Still life 'Roses' Signed 'Austin' Date 1910. Stands 5" in height.
Estimate: £150.00 - £200.00



Lot: 493
Lorna Bailey Early Limited Edition Hand Painted and Signed Large Charger, no 23/100. 'Halloween' design Pumpkin. Mint condition. Old Ellgreave pottery backstamp. 13.5 inches in diameter.
Estimate: £80.00 - £120.00



Lot: 500
Minton 19th Century Two Handle Regency Pedestal Vase. Circa 1880. 8.5" in height.
Estimate: £150.00 - £180.00



Lot: 495
Italian Pottery Bust of Praying Lady, signed
Estimate: £80.00 - £100.00



Lot: 501
Kevin Francis Hand Painted Collectors Guild Figure. Child issue "Jade". Date 2007. Height 4.5 inches.
Estimate: £30.00 - £40.00



Lot: 496
Weymss Scottish Thistle Pattern Inverted Bowl, impressed Weymss mark to base and T.Goode & Co. Retailer. Very good condition, stands 3.25" in height.
Estimate: £60.00 - £80.00



Lot: 502
Samson 'Commedia dell'Arte' Figure, after Derby, pierrot character in orange trousers and gold spotted, royal blue smock with white frill collar, white cap and orange brimmed hat, holding a canister or purse in his left hand and turning away as if to hide his purpose; 7.75 inches high; faux Derby mark to underside, Samson, late 19thC
Estimate: £80.00 - £120.00



Lot: 497
Burleigh Ware Handpainted Yellow & Green Cricketer Jug Circa 1935. Burgess & Leigh Cricket handle jug. May have been modelled on Sir Don Bradman. A very rare jug in excellent condition. 7.5" in height.
Estimate: £600.00 - £800.00



Lot: 503
Burleigh Ware Character Jug, Prime Minister of the Union of South Africa, General The Right Honorable JC Colonel Smuts, South Africa, 1941 coloured in tones of brown, maroon and flesh tones, 5 inches high, impressed and printed marks to base.
Estimate: £60.00 - £80.00



Lot: 498
Royal Worcester Hand Painted Lidded Shape Vase. Peacock and Peahen in a wooded setting. Signed C.V.White, date 1907. Stands 11.5 inches high.
Estimate: £500.00 - £800.00



Lot: 504
 Beswick Horse Figure "Pinto Pony", first version, "skewbald" colourway, model number 1373. Designer Arthur Gredington. 6.5 inches high.
 Estimate: £30.00 - £40.00

Cloucester, small size.
 Backstamp 3A. 5. Mrs. Tittle Mouse, style one. Backstamp 2B.
 Estimate: £80.00 - £120.00



Lot: 505
 Beswick Dog Figures, 2 in total.
 1). "Beagle Wendover Billy", model number 1933A, height 5.5 inches. 2). "Corgi"-small. Model number 1736. Height 2.75 inches.
 Estimate: £20.00 - £30.00



Lot: 511
 A Fine Derby Porter Mug Painted By William Cotton with a view near Naples. Circa 1820-25. 4.5" in height.
 Estimate: £300.00 - £500.00



Lot: 506
 Beswick Figures. 3 in total. 1). "Fox curled", model no.1017, 4 inches wide. 2). "Lion cub", model no.2098, 4 inches high. 3). "Persian Kitten", white colourway, model no. 1886. Seated looking up. Height 4 inches.
 Estimate: £30.00 - £40.00



Lot: 511A
 Staffordshire Mid 19th Century Figure Of A Man Sat Of A Barrel Drinking Ale with a contented look. 6.5" in height.
 Estimate: £20.00 - £40.00



Lot: 507
 Grays Pottery, Clarice Cliff Style, Hand Painted 1930's Art Deco Advertising Jug and Bowl. 'Ross's Belfast Ginger Ale' jug. 4.5 inches high. Bowl 5.25 inches diameter.
 Estimate: £20.00 - £40.00



Lot: 512
 Crown Ducal A.G.R. Lotus Jug, Circa 1930's with stylised floral pattern, pat 6778 on ivory ground. 8.5" in height, 8.5" in diameter.
 Estimate: £20.00 - £40.00



Lot: 510
 Poole Eathenware Carter Stabler Ovoid Shaped Vase. Circa 1947-50. Pattern designed by Truda Carter. Floral design on alpine white ground. Painted by Jean Cockram. 7" in height.
 Estimate: £40.00 - £60.00



Lot: 513
 Two Large Beswick Horses, one in brown, with reins, together with a white horse, also of large size, complete with reins, the white horse AF, 11 inches high.
 Estimate: £30.00 - £50.00



Lot: 510A
 Beswick Beatrix Pottery Figures, 5 in total. 1. Tabitha Twitchett 1st Variation, Backstamp 3B. 2. Flopsy, Mopsy and Cotton Tail style one, backstamp 3B. 3. Tabitha Twitchit and Mopped, 1st version, small size. Backstamp 3B. 4. Tailor of



Lot: 515
 Beswick Mounted Horse Figure. 'Arkle Pat Taaffe up' Raised on a Wooden Plinth. Model Number 2084 Issued 1970, Last Year 1982. Connoisseur Horses. Height 12.5inches.
 Estimate: £200.00 - £300.00



Lot: 516
Lladro Figure 'A Touch Of Glass'
Model number 5377. Issued
1986. 14.5" in height. 1st quality
& excellent condition.
Estimate: £120.00 - £140.00



Lot: 521
Lladro Figure 'Valencian Girl'
model no 4841. Issue year 1973.
Height 6.5 inches.
Estimate: £20.00 - £40.00



Lot: 517
Lladro Figure "Woman Golfer",
model number 4851. Issue year
1973. Height 10.25 inches.
Excellent condition.
Estimate: £40.00 - £60.00



Lot: 523
Volkstedt Hausmaler Small
Monkey Band Figures. Circa
1890's. 3 in total. 4.5" & 4.75" in
height. All figures are in good
condition.
Estimate: £120.00 - £150.00



Lot: 518
Lladro Collectors Society Figure,
1992, 'All Aboard' model number
7619. 5" in height, 7.25" in
length. With box & papers. Mint
condition.
Estimate: £40.00 - £60.00



Lot: 524
Beswick Horse Figures, 2 in total.
1). Black Beauty". Model number
2466. Height 7.25 inches. 2).
"Thoroughbred Foal"- first
version. Model number 1816.
Height 3.5 inches.
Estimate: £30.00 - £40.00



Lot: 519
Beswick Collection Of Siamese
Cat Figures, 6 figures in total, 1.
Siamese Kittens, model number
1296. 2.75" in height. 2. Siamese
Cat, Lying Facing Right, Model
Number 1559A. 7.25" in height,
3. Siamese Cat, Lying Facing
Right, Model Number 1559B,
7.25" in length, 4. Siamese Cat
Large Seated. Model number
1882, 9.25" in length, 5. Small
Siamese Cat, seated. 4.25" in
height, 6. Siamese Cat, standing,
4.25" in height.
Estimate: £60.00 - £80.00



Lot: 525
Beswick Dog Figure "Cocker
Spaniel, Horseshoe Primula",
black gloss. Model number 967.
Issued 1965-1982. Height 5.75
inches.
Estimate: £20.00 - £30.00



Lot: 520
Lladro Figure 'Curious' Model
Number 5009. Issued 1978. 9" in
height. With original box &
papers.
Estimate: £30.00 - £50.00



Lot: 526
Beswick Beatrix Potteries 'Pigling
Bland' Figure c 1956. 4 inches
high.
Estimate: £20.00 - £25.00



Lot: 526D
Bretby-oval Shaped Wall Plaque.
Japanese Scene, 15 inches high.
Estimate: £20.00 - £30.00



Lot: 527
 Rosenthal Bavaria Lustre Two
 Handled Hand Finished Bowl,
 fruit bananas and strawberries,
 signed to base. 11.5" in
 diameter. Plus a similar hanging
 two handle lustre bowl. 9.2" in
 diameter.
 Estimate: £30.00 - £40.00



Lot: 540
 Wedgwood 60 Piece Fine Bone
 China 8 Setting Dinner Service,
 comprises 8 large dinner plates,
 2 tureens, 1 gravy boat and plate,
 8 soup dishes, 8 medium sized
 plates, milk jug, sugar bowl, 8
 small side plates, 8 saucers, 8
 cups, 6 two handled soup
 cups/bowls. 60 pieces in total. All
 pieces are in mint condition.
 Estimate: £150.00 - £200.00



Lot: 528
 Rosenthal Bavaria Lustre Hand
 Finished, pair of butterfly and fruit
 plates circa 1930. Each 7.5"
 diameter.
 Estimate: £30.00 - £40.00



Lot: 543
 Royal Dux Figure, 'Girl Flower
 Seller, with pink triangle to
 underside of base, 10 inches
 high.
 Estimate: £60.00 - £80.00



Lot: 536
 Two Bretby Majolica Type
 Maggie Figures, each in classic
 black and white colouring to head
 and body, but with green, purple
 and red tails and wing tips,
 standing on moss covered rocky
 mounds; 8 inches high; both
 impressed Bretby, England and
 no.2172; plus two various Bretby
 terracotta wall plaques with
 raised and cold painted
 Japanese scenes; 1 unmarked(4)
 Estimate: £30.00 - £40.00



Lot: 546E
 Copeland Spode. A Handsome
 Charger or Server Broad Rim
 Plate. Beautifully gilded in gold
 on a scarce Marina Green
 ground. The centre in gold with
 willow pattern temple landscape
 two. Pattern number Y6056 and
 date letter for June 1938. 10.5
 inches diameter.
 Estimate: £50.00 - £70.00



Lot: 538
 Sitzendorf Figure of a Country
 Girl carrying a basket of fruit and
 flowers, a catch net and a hare,
 the whole hand painted in
 polychrome and standing on a
 rectangular rococo white and gilt
 base; 7.25 inches high; blue
 crowned S mark to underside
 Estimate: £60.00 - £80.00



Lot: 550
 Sherratt and Simpson Hand
 Painted Figure Group. Old lady
 at the water pump. 8.5 inches
 high.
 Estimate: £20.00 - £40.00



Lot: 539
 Small Collection of China
 comprising Carlton Ware yellow
 floral butter dish and matching
 knife in original box, Royal Crown
 Derby cheese slice with gilt and
 white grape and vine handle, in
 original box, pair of 1922 Preston
 Guild Merchant cups (lacking
 saucers) plus Carlton Ware small
 basket(5)
 Estimate: £20.00 - £30.00



Lot: 552
 Dennis China Works Arctic Polar
 Bear Vase. Shape no 110.
 Designer Sally Tuffin. Paintress
 Thareza Blackmore. 6.25 inches
 high.
 Estimate: £100.00 - £150.00



Lot: 554
 Moorcroft Pin Dish, with tube lined decoration, depicting magnolias on a cream ground, stamped to base. circa 1993, 4 1/4 inches in diameter.
 Estimate: £20.00 - £30.00



Lot: 560
 German Fairing Figure with inscription that reads 'Shall we Sleep First or How?'. 4 by 3.5 inches high.
 Estimate: £15.00 - £20.00



Lot: 555
 Moorcroft Vase 'Clematis' design c 1950's. Marks to base. 5 inches high.
 Estimate: £60.00 - £80.00



Lot: 561
 Minton Blue and White Tile, Isnik Style. Marked to base Minton China Works, Stoke on Trent. 8 inches square.
 Estimate: £15.00 - £20.00



Lot: 556
 William Moorcroft Signed Vase, pomegranate design on blue ground circa 1920's, 7" in height.
 Estimate: £120.00 - £150.00



Lot: 562
 An Extremely Rare Staffordshire Pottery Punch Bowl of Nautical Interest. The Punch bowl is a presentation piece given by Owen Elias. The following inscription is highlighted in gilt to the side of the bowl. 'Presented by Captain Owen Elias, Schooner Amiable, to his beloved wife Jane Elias from Elsinore in the year, 1879'. The other side of the bowl has a hand painted depiction of the ship in full sail flying the English Ensign. 11 inches in diameter. 6 inches tall.
 Estimate: £100.00 - £150.00



Lot: 557
 Royal Copenhagen Porcelain Teaset on Tray, lavender floral motives on white ground. Comprises teapot, two cups and saucers, milk jug, sugar bowl and tray. Together with a Midwinter pin tray.
 Estimate: £40.00 - £60.00



Lot: 563
 Macintyre Taluf Faience Large Footed Bowl, with banded silver plated rim. circa 1905 - 10. 8 inches in diameter, 5 1/8 inches high.
 Estimate: £80.00 - £150.00



Lot: 558
 Moorcroft Rare Cylindrical Shaped Small Vase. "Orchid design" on blue green ground. Marks to the base. 3 1/8 inches high.
 Estimate: £80.00 - £100.00



Lot: 564
 Macintyre. William Moorcroft Signed Florian Ware Vase. "Iris" pattern. c.1900. 6.25 inches high. Restoration and over painting to rim of neck area. Body area very good condition, Restoration.
 Estimate: £120.00 - £150.00



Lot: 559
 Moorcroft Small Vase "Hibiscus" Design on blue ground. Label to base reads Potters To Late Queen Mary. 3.75 inches high.
 Estimate: £40.00 - £60.00



Lot: 565
 Royal Worcester Crown Ware
 Scottie Wilson Designed and
 Signed 20 Piece Tea and Coffee
 Service c 1960's. With stylized
 black print decoration on a
 terracotta ground. All pieces are
 in excellent condition.
 Estimate: £150.00 - £200.00



Lot: 570
 Minton 'Haddon Hall' Tea Set,
 comprising six cups, saucers and
 side plates, with a milk jug, sugar
 bowl, comport and a cake tray, all
 decorated by floral foliage, (22).
 Estimate: £150.00 - £200.00



Lot: 566
 Royal Dux Figure Circa 1900.
 'Male Water Carrier' 2463. Pink
 Triangle to base. Stands 16.5" in
 height. Very good condition.
 Estimate: £150.00 - £200.00



Lot: 571
 Burleigh Ware 1930's Green
 Coloured Stylised Jug & Bowl
 with raised animal decoration on
 Chocolate brown ground. Bowl
 13" in diameter, Jug 9" in height.
 Estimate: £30.00 - £50.00



Lot: 567
 Royal Dux Figure Group 'Young
 Girl With Sheep' Circa 1890. Pink
 triangle to base. stands 10" in
 height.
 Estimate: £120.00 - £150.00



Lot: 572
 Moorcroft Limited Edition Cabinet
 Plate, number 469/2000. Date
 1998. Birth Of The Year. 9" in
 diameter.
 Estimate: £60.00 - £80.00



Lot: 568
 Walter Moorcroft Signed Large
 Modern Stylised Leaf Vase,
 'Pineapple Plant' design. Limited
 edition no.15 of 100. Dated 12-01-
 87. Stands 14.5 inches tall
 Estimate: £150.00 - £180.00



Lot: 573
 Moorcroft Trial Vase dated 26-09-
 90 with stylised floral design.
 Stands 10.75 inches tall.
 Estimate: £150.00 - £180.00



Lot: 569
 Moorcroft Ladybird Pattern Small
 Waisted Vase, from the 'Fly
 Away Home Collection' by
 Rachel Bishop, cornflower blue
 blooms towards the rim whilst the
 leaves occupy the lower, bulbous
 part of the vase, with several
 ladybirds about to take flight, all
 on a cream ground, some
 blue/black to the base and similar
 interior; 5.25 inches high; various
 green Moorcroft marks and date
 2005
 Estimate: £60.00 - £80.00



Lot: 574
 Moorcroft Prestique Vase
 'Kwandwe Springbok' design.
 Designer by Rachel Bishop, date
 2006. 9.25 inches high. First
 quality and mint condition. Boxed.
 Estimate: £300.00 - £400.00



Lot: 574B
 Collection of Wedgwood Jasper
 Ware comprising small mantel
 clock, pair of square trinket
 boxes, pair of dwarf candlesticks,
 pair of circular trinket pots and
 one other, pair of heart shaped
 dishes, 3 various small vases,
 and a circular pin dish, all in pale

blue and white, plus square trinket pot, small rectangular trinket pot, pin tray and small vase, all in pale green and white(18)
 Estimate: £20.00 - £30.00



Lot: 580
 Moorcroft Lidded Ginger Jar. 'Hibiscus' pattern in various colours on blue ground. Labels to lid and base of jar read 'Potters to the Late Queen Mary'. 6 inches in height.(a/f over-painting to cover)
 Estimate: £100.00 - £150.00



Lot: 575
 Moorcroft Large Footed Bowl 'Clematis' Design on green ground. Signed to base. Overpainting to outer rim area of bowl. 10.25" in diameter, 3.5" in height.
 Estimate: £100.00 - £150.00



Lot: 581
 Walter Moorcroft Collectors Club Jug/Vase. Date 1996. No 2385. 'Lilies' Design. 9.5 inches high.
 Estimate: £120.00 - £145.00



Lot: 576
 Moorcroft Violets Waisted Vase, three large, geometrically stylised blue/purple violets on a ground of shaded green quadrilaterals, above a blue/black base, and below two continuous bands of similar violets, one in pinkish purple, one in mulberry, with pale green to the flared rim; dark blue/green interior; 8.25 inches high; LM monogram and impressed marks to underside
 Estimate: £100.00 - £130.00



Lot: 582
 W Moorcroft Cabinet Plate 'Thaxted Parish Church'. 1340. Date 1996. 9 inches in diameter. Signed and embossed marks to base. Original box.
 Estimate: £60.00 - £80.00



Lot: 577
 William Moorcroft signed Footed Bowl. "Pomegranate" design. c.1930's. 4.25 inches high, 9.25 inches diameter. Restoration and over painting to areas to bowl.
 Estimate: £100.00 - £120.00



Lot: 583
 Moorcroft Small Footed Goblet Shaped Vase 'Freesia' design on blue ground. 5 inches high.
 Estimate: £60.00 - £75.00



Lot: 578
 William Moorcroft Signed Macintyre Trumpet Vase decorated with rose garland design on white ground. Circa 1907. Enriched with gilding. 6" in height.
 Estimate: £120.00 - £150.00



Lot: 583A
 Royal Albert Old Country Roses Part Dinner Set comprising teapot, bud vase, two bowls, 2 cups and saucers, milk jug and sugar bowl.
 Estimate: £20.00 - £30.00



Lot: 579
 Moorcroft Pewter Pedestal Tazza 'Wisteria' Plums design blue ground. c 1925. 5 inches high. 8.75 inches tall.
 Estimate: £120.00 - £150.00



Lot: 584
 Moorcroft Lamp Base 'Orchids Design' on yellow ground, Moorcroft marks to base. Stands 10.25 inches high.
 Estimate: £120.00 - £150.00



Lot: 585
 James Macintyre Set of Five Egg
 Cups within an Art Nouveau
 silver plated stand with 6 silver
 spoons. c 1905. 5.25 inches high.
 Estimate: £150.00 - £180.00



Lot: 591
 Moorcroft MCC Collectors Club
 Vase. Date 1998. 'Convolvulus'
 design. Debbie Hancock. 7
 inches tall. First quality and mint
 condition.
 Estimate: £150.00 - £180.00



Lot: 586
 William Moorcroft Signed Footed
 Bowl Early 'Hibiscus' Design on
 yellow ground. Circa 1940's. 2" in
 height, 7.25" in diameter.
 Estimate: £80.00 - £140.00



Lot: 591A
 Shelley 'Wild Flowers' Part
 Teaset comprising sandwich
 plate, 2 cups, 5 saucers and 6
 side plates. Together with a small
 selection of Royal Albert 'Old
 Country Roses' items. (20)
 Estimate: £30.00 - £40.00



Lot: 587
 Art Nouveau Style Two Handled
 Regina Lustre Vase. Elegant
 shape. 11.25 inches high.
 Estimate: £100.00 - £150.00



Lot: 592
 Troika Early Double Bass Large
 Vase. Troika marks to underside
 of vase. Aztec design. 13.75
 inches high.
 Estimate: £200.00 - £300.00



Lot: 588
 Moorcroft Small Inverted Bowl,
 "Orchid" design on bluey green
 ground. 4.25 inches diameter.
 Estimate: £40.00 - £60.00



Lot: 593
 Troika - Early - Rectangle
 Shaped Brick Vase. Marked
 Troika Cornwall. 8.5 inches high.
 Estimate: £100.00 - £150.00



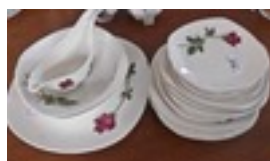
Lot: 589
 Moorcroft Modern Small Vase
 'Finches' Pattern, Tubelined.
 Four inches high.
 Estimate: £60.00 - £80.00



Lot: 594
 Moorcroft Small Inverted Footed
 Bowl. c.1920's. "Pomegranate"
 design on blue ground. 4.25
 inches diameter.
 Estimate: £40.00 - £60.00



Lot: 590
 Moorcroft Small Vase 'Clematis'
 design on pale blue ground. c
 1950. Some over painting to rim
 edge of neck. 4.75 inches high.
 Estimate: £60.00 - £75.00



Lot: 602
 Midwinter Stylecraft 'Fashion
 Rose' Pattern Dinner Set
 comprising meat platter, two
 vegetable serving dishes,
 gravy/sauce boat, 8 dinner
 plates, 8 side plates and 8
 dessert/salad plates, each piece,
 except the gravy boat, having a

left of centre single red rose stem, with it's shadow, on a white ground, the gravy boat having one similar on each side; platter 12 inches in diameter, plates 8.75, 7.5 and 6.25, vegetable dishes 8.75; c1960(28)
 Estimate: £100.00 - £140.00



Lot: 603
 Pair of Midwinter Stylecraft 'Wild Geese' Pattern Platters, original design by Peter Scott, showing three Canadian geese in flight, to the top left corner, with a few reeds to bottom left; 13.75 inches wide x 11; shape designed 1952, 'Wild Geese' designed 1954(2)
 Estimate: £30.00 - £50.00



Lot: 603A
 Midwinter 'Riviera' Hostess Set comprising Fashion shape saucer plate with yachts in harbour scene, and cup with flower seller, original drawings by Hugh Casson, hand engraved at Midwinter; c1960
 Estimate: £20.00 - £30.00



Lot: 608
 Set of Three Ashworth's Ironstone Chinoiserie Plates, each having a central scene showing a vase of flowers, a musical instrument and other implements resting on a large lily leaf, backed by chrysanthemums, on a white ground, within a square with concave canted corners, bordered by iron red and primrose yellow, the whole set on a deep green ground heavily gilt with Chinese lantern blooms and having 2 pairs of opposing figural plaques and 2 sets of floral plaques to each rim; all being hand painted within print outlines; plus 1 oval footed dish of similar pattern; plates 10.5 inches in diameter, dish 12 x 9; printed maroon Royal Coat of Arms mark above 'Ironstone China', plus impressed 'Real Ironstone China' to each underside, c1870 (a/f to dish, paint losses and restoration to foot) (4)
 Estimate: £150.00 - £200.00



Lot: 605
 Kevin Francis Handpainted Limited Edition And Numbered Toby jug. Number 159/500. 'The Great British Bulldog' modelled by Amy Moss. 7" in height. 1st quality & mint condition.
 Estimate: £30.00 - £40.00



Lot: 606
 Staffordshire Mid 19th Century Figures 'Little Red Riding Hood' Circa 1860's. 7.25" in height
 Estimate: £40.00 - £60.00



Lot: 607
 Large Pair of Dresden Classical Figures Representing Architecture and Sculpture, or further, Industry and the Arts, each a seated female in robes of Ancient Greece, Sculpture, titled 'Plastik' to the plinth, shown working on a full figure of a putto in 'marble' to her left, with the



Lot: 609
 Late Victorian 'Stanley China' Part Tea Set, each with a red patterned hand finished edge, comprising cups, saucers, side plates and cake plates. (19).
 Estimate: £10.00 - £20.00



Lot: 610

High Quality Davenport Ironstone Dish In The Chinese Style, 'Flying Bird' pattern, colour number 6. Which dates 1805-1820. It is marked to the reverse with the davenport 'Stone China' anchor mark. The scalloped, shell-shaped dish is decorated with polychrome enamel and gilt on a blue transfer pattern of an exotic bird and flowers. The handle is beautifully decorated with scale and feather gilding on a cobalt blue ground. A very unusual addition to this lovely piece. It measures 24cms in width. In overall excellent antique condition. With no chips, cracks, hairlines or restoration.
Estimate: £50.00 - £80.00



Lot: 613

Six Aynsley Fruit Side Plates comprising 5 of the same pattern with slightly differing background shades, all fully printed, and 1 partially hand painted with paler background; although not matching, this lot would compliment lot 599(a/f to 1 plate of the 5 matching, chip to rim)
Estimate: £10.00 - £15.00



Lot: 614

Florentine Style Desk Set 35 cms wide, 18 cms deep and 13 cms high. Marked GK underneath
Estimate: £40.00 - £60.00



Lot: 610B

Collection Of Russian Made Pottery, Comprising Figural Decanter, Grazing Horse, Bear, Rabbit etc + A Royal Doulton Winnie The 'Pooh Counting The Honey pots'.
Estimate: £30.00 - £50.00



Lot: 615

Walton Early 19th Century Pair Of Figures circa 1820's. 'Tailor and his wife', Arm missing to tailor figure. Each 5" in height.
Estimate: £30.00 - £50.00



Lot: 611

Midwinter Modern Fashion Shape 'Cherokee' Pattern Dinner Set and Tea Ware comprising 2 various meat platters, 13.75 inches x 11 and 12 x 9.75, vegetable tureen and cover, gravy/sauce boat, 6 dinner plates, fruit serving dish and 6 dessert dishes, plus 6 cups with squared bases (lacking matching saucers) and 6 triangular saucers with rounded centres (lacking matching cups), and a sugar bowl; c 1957; probably designed by Jessie Tait(30)
Estimate: £100.00 - £200.00



Lot: 616

Bavarian Gilt Coffee Set, comprising coffee pot, cream jug, sugar bowl, together with six coffee cups and saucers, probably mid 20th century, (15).
Estimate: £10.00 - £20.00



Lot: 612

Hand Decorated Fruit Bowl with rope handle. (Studio art).
Estimate: £20.00 - £30.00



Lot: 617

A Very Unusual Naples Porcelain Wall Plaque, depicting Adam and Eve with an angel, highly decorated and embossed, the size of the plaque and frame 14 inches high and 12 inches wide, the plaque enclosed with an elaborate gem set type frame with brass cartouches Florentine style, marked to the back, a crowned 'N' in underglaze blue with an old paper label, '421'. Original description describing the item as an important 18th / 19 century Capo-di-Monte, wall plaque of the king of Naples Charles Pemoa.
Estimate: £200.00 - £300.00



Lot: 618
 Pair of Herend Porcelain Coffee Cups and Saucers, plus sparrowbeak jug similar, all decorated in traditional Herend floral style, with hand painting in two shades of green, with gilt, over print; cups 1.75 inches high, saucers 4.5 in diameter, jug 3 inches high; blue printed mark 'Herend, Hungary, Handpainted', cups and saucers numbered 711, jug 636 (5)
 Estimate: £20.00 - £40.00



Lot: 623
 Royal Albert 'Old Country Roses' Part Teaset approx (70) pieces including teapot, coffee pot, cake stand, dinner plates, cream jug, side plates, cake/sandwich plate, cups and saucers.
 Estimate: £150.00 - £200.00



Lot: 619
 Two Various Signed Capodimonte Figures comprising a schoolgirl, her satchel dropped on the floor as she reaches up to a butterfly on a tree trunk; incised Volta to upper base; 8.75 inches high overall, plus a boy, perched on a foliate stump, carving a tree branch on his knee, the whole supported on a white socle with rococo gilt trim; impressed anchor mark and Benacchio to upper base; 6.25 inches high overall (2)(both a/f)
 Estimate: £20.00 - £40.00



Lot: 624
 Volkstedt Hausmaler Fine Pair Of Two Handled Decorative Vases, Circa 1890. Each 6" in height.
 Estimate: £40.00 - £60.00



Lot: 626
 Austrian Amphora Figural Dish, circa 1900, depicting a young boy holding a ball in left hand, standing between two shells, 11 inches high.
 Estimate: £60.00 - £80.00



Lot: 620
 Denby Signed Globular Shaped Pottery Vase stylised with decoration. Signed Glyn Colledge. 9" in height.
 Estimate: £20.00 - £40.00



Lot: 626A
 19th Century - Pottery, Purple Glazed Vase with flared and frilled neck. Standing 11.25 inches tall.
 Estimate: £30.00 - £40.00



Lot: 621
 Charlotte Rhead Bursley Ware 1930's Jug, stylised floral decoration, pattern TL96; 9 inches high
 Estimate: £30.00 - £40.00



Lot: 627
 A Rare Sized Crown Devon Fieldings Handpainted Large Bulldog Figure. Standing position, circa 1930's. Excellent condition. 7.25 inches high, 11 inches long.
 Estimate: £80.00 - £120.00



Lot: 622
 Wemyss Small Cockerel Tea Pot. 4 inches high.
 Estimate: £60.00 - £80.00



Lot: 628
 Italian Majolica 19th Century Openwork Painted Pedestal Bowl, hand painted with a scene of a Putto riding a Dolphin to the central panel, snake handles to the rim, Cantagalli style. Circa 1880, 6.5 inches high, 10.8 inches diameter. Restored.

Estimate: £80.00 - £120.00



Lot: 628A

Masons Ironstone Good Quality 90 Piece Dinner & Tea/Coffee Service. 'Regency' Pattern. C4475. Reg. 821349. England to base. Comprising tea pots, coffee pots, large dinner plates, cups & saucers, coffee cups & saucers, tureens, lidded jars, soup dishes, medium plates, side plates, milk jugs and bowl, sandwich plates. Estimate: £150.00 - £180.00



Lot: 634

Capo Di Monte Fine Hand Painted Signed Figure. "Down On His Luck". Signed Volta. 6.25 inches high. Estimate: £20.00 - £30.00



Lot: 630

Wade Complete 5 Piece Set Of Natwest Piggy Banks all in excellent condition, comprising Sir Nathaniel, Lady Hilary, & Children. Estimate: £40.00 - £60.00



Lot: 635

Shorter Hand Painted Two Faced Novelty Tea Pot "Old King Cole". c.1930's. Height 5.25 inches. Estimate: £20.00 - £30.00



Lot: 631

Large Royal Winton Grimwades Vase, decorated with floral pattern on a lustre pink ground, raised on a footed base, 13 inches high. Estimate: £20.00 - £30.00



Lot: 636

Four Various German Studio Pottery Vases. 16 and 17 inches in height. Estimate: £10.00 - £15.00



Lot: 632

Late 19th Century German Figural Candlestick, decorated with blue floral scrollwork, with a Rococo style base, 13 inches high. Estimate: £100.00 - £140.00



Lot: 637

Small Collection of Animal Figures comprising Beswick small dog on cushion, Teviotdale Ltd.Ed. 'Woodmice and Bluebells' no.960/1000, with certificate and original bill for Â£80, Capodimonte bird, Border Fine Arts 'Frisk', no.A6512, Wade bird ashtray and spare bird, foal plus Lladro sleeping child figure((8) Estimate: £20.00 - £30.00



Lot: 633

Early 20th Century Commemorative Mug, printed in Urdu, translating as 'Gift from Grand Palace, Al Malik Farooq', circa 1927. Estimate: £60.00 - £80.00



Lot: 638

Hand Painted Seven Piece Dessert Set comprising one low comport and 6 plates, each hand painted with an English country garden flower including iris, lily, dog rose etc., the rims decorated with a 'bleu celeste' band broken by 5 gilt stylised flowers and trimmed with gilt; comport 2.5 inches high x 8.75 in diameter, plates 9 inches in diameter Estimate: £10.00 - £20.00



Lot: 639
Royal Albert 'Trillium' design part teaset comprising coffee pot and 6 cups and saucers.
Estimate: £10.00 - £20.00



Lot: 645
Collection of Pendelfin Figures.
Estimate: £10.00 - £20.00



Lot: 640
Royal Albert 'Moss Rose' Dinner Service comprising tureen with lid, one large bowl, one sandwich plate, 6 large dinner plates, 6 soup bowls and plates, 6 fruit bowls, salad plates, side plates, 5 saucers, 6 cups, milk jug, sugar basin and teapot. (53) pieces.
Estimate: £40.00 - £60.00



Lot: 646
Collection of Ceramics, comprising Royal Winton butter dish, Denby teapot, Sylvac pot and a Wade coffee pot, mainly mid 20th century, (4).
Estimate: £20.00 - £30.00



Lot: 641
Carlton Ware Part Tea Set. Registered Australian Design. Brown and Cream leaf design. Includes teapot, milk jug, salt and pepper, butter dish, 6 large cups and saucers, 6 small cups and saucers, 6 serving dishes, sugar bowl approx (58) pieces.
Estimate: £30.00 - £40.00



Lot: 647
Very Large Terracotta Earthenware Bowl, late 19thC, glazed interior, 10½ inches high x 21 in diameter.
Estimate: £25.00 - £50.00



Lot: 642
Collection of Ceramics, comprising Wade Tetley Set, consisting of cookies jar, teapot and toast rack, a Burslem jug and a Wade Worthington jug.
Estimate: £20.00 - £40.00



Lot: 648
Small Collection of Wade Whimsies, Walt Disney characters 'Boris' 2.25 inches high, sitting, and 'Chief' 1.5 inches high, standing, plus twelve various animals
Estimate: £20.00 - £30.00



Lot: 643
Collection of Ceramics, comprising Carlton ware Rouge Royale dish, pair of German figures, Grandma and Grandpa, dog figure and two Lancaster Sandland Character jugs.
Estimate: £30.00 - £40.00



Lot: 649
Two Boxes of Various Bells, by various factories including Aynsley, Worcester, Wedgwood, Coalport and many others, approximately 30 in total.
Estimate: £20.00 - £30.00



Lot: 644
Collection of Ceramics, comprising Poole lidded preserve pot and five Carlton ware leaf dishes, (6).
Estimate: £15.00 - £30.00



Lot: 650
Melrose Grindley England Part Tea For Two, Blue border design on cream ground, comprising 2 cups, 2 saucers and one side plate, tea pot, milk jugs & sugar bowl. (8 pieces in total.)
Estimate: £15.00 - £20.00



Lot: 651
Collection of Various Small Vases and Dishes, mostly Aynsley.
Estimate: £20.00 - £40.00



Lot: 667
Small Quantity of Assorted Aynsley Ware, mainly large vases, dishes and other items.
Estimate: £20.00 - £40.00



Lot: 656
Capo Di Monte Fine Hand Painted Figures (2 in total). Country boy and girl. Signed B. Merli. Each 6.5 inches high.
Estimate: £20.00 - £40.00



Lot: 668
Spode Charles Prestige Chatsworth Vase, hand painted and in original presentation box. Limited edition 22/50. Released in 2006. Certificate included. 9 inches in height.
Estimate: £15.00 - £30.00



Lot: 657
Late 20th Century Studio Art Glass Shaped Bowl, in teal, an Italian lidded vase and cover with gilt overlaid decoration, together with a ceramic bowl of fruit.
Estimate: £20.00 - £50.00



Lot: 669
Shelley Part Dinner Service white flower stylised plates & bowls with gilt border comprising, 6 bowls, 6 soup bowls, 6 saucers, 6 side plates, 6 dinner plates, 1 small sandwich plate & 1 large sandwich plate. (32 in total)
Estimate: £30.00 - £40.00



Lot: 658
Collection of Toby Jugs including Royal Doulton.
Estimate: £30.00 - £40.00



Lot: 670
Matched Pair of Royal Copenhagen Serving Dishes, patterned with stylised ducks swimming amongst reeds, to the interiors, mottled brown to the exteriors; 8.5 inches wide x 7.25(2)(a/f several firing faults to both interiors
Estimate: £10.00 - £20.00



Lot: 662
Paragon Large Size Loving Cup to commemorate the 80th Birthday of the Queen Mother limited edition 750 no 410. Together with three Commemorative China mugs.
Estimate: £30.00 - £40.00



Lot: 672
Set of Four Babycham Glasses, with two Babycham doll figures.
Estimate: £20.00 - £30.00



Lot: 672B
A Lalique Marguerites Bowl of Large Size. The clear and frosted blue stamped bowl, with a wide rim which is decorated with a band of overlapping Daisy flower heads. With an acid etched signature R. Lalique. France,

mark to the centre of the bowl.
Slight chip to the interior edge of
the bowl and outer rim. c.1930's.
13 inches diameter.
Estimate: £100.00 - £250.00



Lot: 678B
Collection of Seven Murano Style
Glass Baskets, made from end of
day glass, highest measuring 11
inches.
Estimate: £20.00 - £40.00



Lot: 673
Collection of Glass, comprising
Murano style glass basket, six
ruby coloured dishes, three
further dishes and a Sincerity
Lodge 3677 souvenir cup.
Estimate: £20.00 - £30.00



Lot: 679
Svaja Large Glass Bowl 19
inches in Diameter. Turquoise
with brown swirls, etched
signature and with its original
label.
Estimate: £20.00 - £30.00



Lot: 674
Signed Art Glass Figure Group, a
semi-abstract couple shown in a
standing embrace, applied to a
roughly globe shaped base, the
whole in clear glass; 19.5 inches
high overall; indistinct etched
signature to underside
Estimate: £30.00 - £50.00



Lot: 679B
Waterford Large Contemporary
Cut Glass Fruit Bowl, with label
for John Rocha, 6 inches high
and 10 in diameter.
Estimate: £60.00 - £80.00



Lot: 676
Collection of Various Glassware,
comprising two gilt and red
glasses, gilt overlaid red vase,
Millefiori glass vase, etc.
Estimate: £30.00 - £40.00



Lot: 680
Small Collection of Glassware,
comprising Mary Gregory style
glass vase, two Italian vases, a
red glass bottle vase and a
contemporary drinking glass, (5).
Estimate: £15.00 - £25.00



Lot: 677
18th Century Fine Drinking
Glasses. 2 in total. c.1780's.
"Dwarf Ale Glass", with conical
bowl, raised on plain conical foot
and engraved with hops to the
bowl. The other with ribbed
design. 5.25 and 5.5 inches high.
Estimate: £80.00 - £120.00



Lot: 681
Three Boxed Drinking Glass Sets
(as new) comprising Edinburgh
Crystal Wine Glasses with etched
design, set of four Crystal large
wine glasses and
commemorative tumblers.
Estimate: £30.00 - £40.00



Lot: 678
Six Boxed Sets of Bohemia
Diana Drinking Glasses,
comprising two sets of wine
glasses, brandy glasses,
port/sherry glasses, champagne
flutes, and a further set of similar
associated tumblers, (6).
Estimate: £25.00 - £30.00



Lot: 682
Richmond Part Teaset
comprising 6 cups, saucers and
side plates. Pretty pink floral
design on white ground.
Estimate: £15.00 - £20.00



Lot: 685

Webb Fine Quality Quilted Satin Glass Vase. Decorated with applied glass beads, shaped as ears of wheat, to pink body. Excellent. 6.5 inches high. Estimate: £80.00 - £120.00



Lot: 689

Whitefriars 1960's Peach/Orange Colourway Large Vase. Stands 10 inches high. Estimate: £20.00 - £40.00



Lot: 686

Large Unusual Murano Amethyst Glass Vase, in the form of a handbag, with two handles, with a polished underside, 10½ inches high. Estimate: £20.00 - £30.00



Lot: 689A

John Ditchfield Conical Lampshade, the rim in iridescent golden peach colour, the dome enhanced with flowing streams and large speckles of peacock iridescence which trail into the peach, these colours showing through the white streaked glaze to the underside; 13.75 inches in diameter x 6.75 high; original Glasform (John Ditchfield) label (this item is a pair to lot 689 & similar to lot 688) Estimate: £60.00 - £80.00



Lot: 687

Whitefriars Knobby Design Bowl with rich emerald green colourway. Whitefriars label to side of bowl. 4.5 inches high and 7.75 inches diameter. Estimate: £60.00 - £80.00



Lot: 690

Whitefriars Boxed Shaped Large Vase c 1950, peach/orange colourway. Baxter design. Stands 11 inches high. Estimate: £20.00 - £40.00



Lot: 688

Whitefriars 1960's Amethyst Coloured art Glass Vase, flared shape. Stands 10.25 inches high. Estimate: £30.00 - £40.00



Lot: 690A

John Ditchfield Conical Lampshade, the rim in iridescent golden peach colour, the dome enhanced with flowing streams and large speckles of peacock iridescence which trail into the peach, these colours showing through the white streaked glaze to the underside; 13.75 inches in diameter x 6.75 high (this item is a pair to lot 690 & similar to lot 688) Estimate: £60.00 - £80.00



Lot: 688A

John Ditchfield Wide Rimmed Conical Lampshade, the deep rim in iridescent golden peach colour, the dome enhanced with flowing streams and large speckles of peacock iridescence which trail into the peach, these colours showing through the white streaked glaze to the underside; 14.25 inches in diameter x 5.75 high (this item is similar to lots 689 & 690) Estimate: £60.00 - £80.00



Lot: 691

Collection of Chinese Decorated Tableware comprising 5 rice bowls, 5 spoons and 5 small bowls. Estimate: £20.00 - £30.00



Lot: 692
 Collection Murano Style Glassware, comprising three dishes, tall vase and two centrepieces, mainly with a red colourway, together with a Nao Figure 'So Shy', model no. 1109, dated 1988, 8 inches high, complete with box, (7).
 Estimate: £40.00 - £60.00



Lot: 697
 Art Deco Part Dressing Table Set, with a large decorative paperweight, small glass dump, Edinburgh Crystal mantle clock and a large Murano style figure of lady, in amber and blue.
 Estimate: £20.00 - £40.00



Lot: 693
 Murano Glass Figure of a Dancing Lady, measuring approximately 10 inches high.
 Estimate: £40.00 - £60.00



Lot: 698
 Capo Di Monte Signed Pair of Figures, A boy and girl carrying baskets of fruit dressed in early Twentieth Century dress. Each raised on a polished wooden circular stepped plinth, dates 1982. Each 10.5 inches in height.
 Estimate: £30.00 - £40.00



Lot: 694
 Superb Amber and Aquamarine Oval Studio Glass Pitcher. Signed on the base by Jeff Walker and Robin Smith of the short-lived Melting Pot Glassworks of Todmorden. This piece was exhibited at the National Glass Museum in 2004. Highly collectable piece by former Darlington glass designers.
 Estimate: £80.00 - £120.00



Lot: 699
 Box of Assorted Glass Bottles, all early 20th century, of various shapes, colours, sizes and designs, comprising 16 in total.
 Estimate: £30.00 - £40.00



Lot: 695
 Pale Amber Coloured Glass Dressing Table Set comprising ring tray, candlestick, 2 powder bowls & tray.
 Estimate: £20.00 - £30.00



Lot: 700
 Very Fine Sabino 'Les Plumes' Pattern Clear and Frosted Opalescent Spherical Glass Vase, design of overlapping stylised peacock tail feathers. Engraved Sabino France to underside of vase. Height 8.5 inches.
 Estimate: £700.00 - £800.00



Lot: 696
 Art Glass Roundel Cyan & Aquamarine In Colour. 10" across, it features a Ying & Yang device in the centre with a spiral around it.
 Estimate: £50.00 - £80.00



Lot: 700B
 Vicke Lindstrand for Kosta Boda Art Glass Engraved Paperweight/Sculpture Depicting Polar Bears, c.1960. Signed To Base, Small Chips To Edge. 5 3/4 x 8 Inches.
 Estimate: £200.00 - £240.00



Lot: 702
 Twentieth Century Cut Glass Fruit Bowl and Pedestal Stand, the fruit bowl with diamond cut decoration and panels of fruit. Raised on matching stand. 10.5 inches high.
 Estimate: £20.00 - £30.00



Lot: 702B
Boxed Set of 2 German Crystal Brandy Glasses together with a decorative globe.
Estimate: £15.00 - £20.00



Lot: 708
Pair of Art Deco Ceiling Lights, circa 1930, the peach coloured glass shades of domed strip shape, each measuring 22½ inches in length.
Estimate: £60.00 - £80.00



Lot: 704
Tiffany Style Table Lamp, bronzed base, blue, orange and green glass shade. 19 inches in height.
Estimate: £30.00 - £40.00



Lot: 709
Murano Style Coloured Glass Vase, Together With Two Paperweights And A Glass Stylised Bowl. Tallest 7 Inches.
Estimate: £20.00 - £40.00



Lot: 705
Ditchfield Large Globe Lustre Lampshade, translucent pale lustre to the central area, with shadows of clear splash decoration overall, becoming whiter towards the top and base, and the lustre more intense; suitable for use as a hanging shade or inverted for a standard lamp; 11 inches high, 37.5 in circumference, aperture 3.75 in diameter; made by John Ditchfield, Glasform
Estimate: £60.00 - £80.00



Lot: 709A
John Ditchfield Iridescent Glass Pair Of Lamp Shades. Each 5.25" in height.
Estimate: £60.00 - £80.00



Lot: 706
Tiffany Style Table Lamp, brass coloured base, pink glass shade. 16 inches in height. Together with two branch decorative table lamp.
Estimate: £30.00 - £40.00



Lot: 710
Probably George II Medicine Measure Of Tapering Form Raised On A Circular Base, With Acid Etched Royal Cypher G2R And Wheel Etched Units Of Measurement. Height 5 Inches. Together With A Victorian Celery Vase Of Elongated Goblet Form With Vertical Spaced Ridges Twisting To The Right Towards The Flared Rim, Short Knopped Stem and Circular Spread Base. Height 9½ Inches.
Estimate: £40.00 - £60.00



Lot: 707
Large Paolo Venini Murano Glass Handkerchief Vase of the quality expected of this largest and most successful of the Venetian Murano glass makers, the inside of rust red colour, cased with a white outer and having a ground pontil mark; 8.5 inches high x 11 in diameter; fully signed to base with acid etched 'Venini', 'Murano' and 'Italy' on three lines, early 1950's
Estimate: £400.00 - £600.00



Lot: 710B
Swarovski 'Bodenleuchte' Late 20th Century Five Branch Glass and Chrome Standard Lamp, with a central light rising above the branches, all with cut glass multi-faceted droplets, raised on a chrome stand, with pressed glass sections to middle, standing on a circular base, measuring 65 inches high. Supplied with Spectra Swarovski crystal. Purchased for £1400 in 2007. Proof of purchase included.
Estimate: £350.00 - £420.00



Lot: 711A

Ditchfield Set of Six Art Nouveau Style 'Trumpet Lily' Lampshades, each with a speckled russet lustre exterior, enhanced with slightly raised, vertical burgundy lines sweeping down and spreading out to follow the frilled rim, the interiors lined with white speckled, high shine, polychrome lustre; each between 5.5 and 6 inches in height, the variation due to them being individually hand made by John Ditchfield, Glasform (nb. this lot is a near match to lot 717)(6)

Estimate: £80.00 - £120.00



Lot: 715

Mdna - Very Fine and Rare Signed Michael Harris Original Glass Vase. Wonderful colours. Etched to base Michael Harris Mdna Glass, Malta. 6.25 inches high.

Estimate: £900.00 - £1,000.00



Lot: 716

Mdna - Fine Early Michael Harris Designed Blue Vase. Signed Mdna to base. 6 inches high.

Estimate: £40.00 - £60.00



Lot: 712

Mdna - Early Ribbed Body Vase. Blue/Green colourway. Flared neck. 5.5 inches high.

Estimate: £30.00 - £50.00



Lot: 717

Mdna - Early Bud Vase. Signed Mdna to base plus Mdna label. c.1970's. 6.5 inches high.

Estimate: £30.00 - £50.00



Lot: 712B

Two Studio Glass Vases of Ovioid Form, together with a slightly taller pink coloured vase, all with iridescent decoration, By Andrew Sanders and David Wallace, all fully marked to base, (3).

Estimate: £30.00 - £40.00



Lot: 717A

Ditchfield Campagna Shape Frilled Rim Lampshade, from the aperture to halfway down, the decoration is russet speckled lustre, enhanced with raised burgundy vertical lines which curve down into the lower half of the shade where the smooth glass is covered with a green based lustre with lilac highlights over a russet and white base; the interior is white lustre shading through to lilac, terminating in a silvery rim; 5.75 inches high x 11.5 average circumference x 6 in diameter at rim; together with a narrower, trumpet lily shaped shade of similar colouring to the upper part of the larger; 6 inches high x 4.5 in diameter at rim; both pieces hand made by John Ditchfield, the larger bearing an original Glasform label (nb. this lot is a near match to lot 711)(2)

Estimate: £10.00 - £20.00



Lot: 713

A Rare Set of Six Antique Bristol Blue Rummors of Large Size on Baluster type Knopped Stems. All in pristine condition with rough pontil marks to bases c 1780/18/00. Each 5.75 inches high

Estimate: £400.00 - £600.00



Lot: 714

An Extremely Fine Quality Art Deco Cut Glass Cologne Bottle of Large Size, Deeply Cut with a V design to the body and stopper, with faceted cut shoulders. 7" high 7 1/2" wide. Retailed by Asprey of London, See page no 170 in their catalogue of the 1930's. Probably made by Baccarat, Paris.

Estimate: £60.00 - £75.00



Lot: 718

Mdina - Quality Glass Paperweights, 4 in total. 1). Mushroom paperweight, signed Mdina. 3 inches high. 2). Paperweight with blob top, signed M'Dina. 3.5 inches high. Plus two further Mdina paperweights of good quality and design.
Estimate: £80.00 - £100.00



Lot: 724

Mdina Boat/Leaf Shaped Dishes, 2 in total. Blue and green colourway. Each 4 x 5 inches.
Estimate: £20.00 - £40.00



Lot: 719

Mdina - Fine Signed Small Blue Vase with Mdina label. 4.25 inches high. Plus Mdina signed early small blue vase of globular shape. 3.5 inches high.
Estimate: £40.00 - £60.00



Lot: 725

Mdina Signed and Dated 88 Large Paperweight of good colour and quality. 3 inches high.
Estimate: £30.00 - £50.00



Lot: 720

Mdina - Fine and Early Signed Paperweight in the form of a seahorse, Michael Harris design. 6 inches high. Plus A. Mdina signed paperweight in the form of a chubby bird. 3.5 inches high.
Estimate: £60.00 - £80.00



Lot: 726

John Ditchfield Very Fine Iridescent Glass Vase with applied decoration. Signed and with Glasform label to base. No 4880. From The Unique Collection. Stands 10.25 inches tall. Mint condition.
Estimate: £100.00 - £150.00



Lot: 721

Mdina - Good Quality Signed Blue Paperweight in the form of two lovebirds. Signed Mdina to base, plus Mdina label. 3 inches high.
Estimate: £20.00 - £40.00



Lot: 727

John Ditchfield Very Fine Iridescent Glass Vase with applied decoration. Signed and with Glasform label to base, number 11454. Mint condition. 6.75 inches tall.
Estimate: £100.00 - £150.00



Lot: 722

Mdina - Early Blue Crackle Glass Decanter and Stopper, with Mdina label to side. c.1970's. 11.5 inches high.
Estimate: £40.00 - £60.00



Lot: 728

John Ditchfield Very Fine Iridescent Glass Vase bright multi colour design. Signed and with Glasform label to base. No 14363. Mint condition. 7.25 inches in height.
Estimate: £80.00 - £100.00



Lot: 723

Mdina - Early - Bottle Shaped Tall Vase with black stripes on blue colourway. Stands 10 inches high.
Estimate: £30.00 - £50.00



Lot: 728A

Collection of Various Glassware, comprising three lemonade beakers, square vase, glass on tall stem, three further glass vases and a squat vase, (9).
Estimate: £20.00 - £30.00



Lot: 729

Three Various Early 20th Century Glass Commemorative Tumblers comprising one with 'Robertson Sanderson & Cos., Celebrated Mountain Dew, Leith', within a thistle frame with two Scotsmen drinking, at the base, portraits of 'Queen Alexandra & King Edward', (VIIth), within a rose frame, crown above and Royal Coat of Arms below, to the other side; the second with 'A Souvenir of the Coronation, 26th June (sic), 1902' to one side with a portrait of 'His Majesty King Edward', (VIIth) to the other; both printed in imitation of acid etching; both 3.75 inches high; the third with a red and white print of 'Q.S.T.S. Queen Mary', 'The Famous 534', 'The World's Largest Liner'; 3.5 inches high (3)
Estimate: £20.00 - £30.00



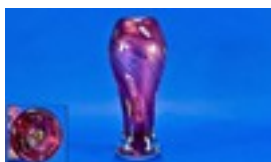
Lot: 732B

Box of Assorted Glass, comprising mainly 20th century cut glass.
Estimate: £30.00 - £40.00



Lot: 733

John Ditchfield Signed, Quality Iridescent Glass, Fruit Shape, Multi Coloured Paperweights in pear and apple form. Each signed and with Glasform label to base. Mint condition. 4.5 and 3.5 inches high.
Estimate: £60.00 - £80.00



Lot: 730

John Ditchfield Very Fine Iridescent Glass Vase with Millefiori design on pink colourway. Signed and dated with Glasform label to base. no 14356. Mint condition. 7.5 inches tall.
Estimate: £80.00 - £100.00



Lot: 733A

Swarovski Cut Crystal Figure "Cheetah". Number 7610 183 225, 3.75 inches high. with box and papers, mint condition.
Estimate: £80.00 - £100.00



Lot: 731

John Ditchfield Quality Iridescent Glass Tall Specimen Vase with purple, gold, blues and green colourway. Signed and with Glasform label to base. No 4412. 8.25 inches in height.
Estimate: £60.00 - £80.00



Lot: 734

John Ditchfield Very Fine Silver Topped Perfume Bottles, 3 in total. From the Unique Collection, each signed and with Glasform label to base. Each with silver stoppers and necks. Fully hallmarked to each stopper and band. 3.25 inches high. All in mint condition.
Estimate: £120.00 - £150.00



Lot: 732

John Ditchfield Quality Iridescent Glass Bud Vase decorated with applied and multi coloured design. Signed and with Glasform label. no 14459. 7 inches tall.
Estimate: £60.00 - £80.00



Lot: 735

John Ditchfield Fine Quality Sinuous Pattern Vase. Silvered ground with applied sinuous decoration. Signed and Glasform label to base. Number 14460. Mint condition
Estimate: £40.00 - £60.00



Lot: 736

Pair of Waterford Crystal Bud Vases, simple vertical zig-zag and line pattern; 7 inches high; acid etched mark to bases (2)
Estimate: £30.00 - £40.00



Lot: 737

Large Blue and White Japanese Nineteenth Century Vase white ground, with blue panels of peacocks and assorted decoration, petal shaped rim to top. 23 inches in height. Estimate: £300.00 - £350.00



Lot: 738

Nineteenth Century Pierced Canton Famille Rose Oval Chestnut Basket finely decorated with courtesan cartouches amongst Famille Rose decorations. c1840 9.5 inches in diameter. Estimate: £100.00 - £150.00



Lot: 739

A Large Chinese Cloisonne Vase, globular form with long neck, 15 inches in height. Decorated with geometric patterns and cartouches with dragons and Phoenix birds. Estimate: £40.00 - £60.00



Lot: 740

A Very Fine and Large 19th Century Japanese Imari Style Hand Painted Charger. c.1880. Decorated with images of Samurai warriors within border of Japanese intertwining symbolic dragons with character seal and extensive decoration to underside. Measuring 22 inches diameter. Excellent condition. Estimate: £400.00 - £600.00



Lot: 740A

ZHANG DA ZHONG 'A most evocative major work, oil on canvas titled "The Patriot". Da Zhong became an artist relatively late in life. During the days of the Cultural Revolution, in the late 1980's Zhang finally went to school and eventually got a Masters of Fine Art from the Guangzhou Fine Arts Academy. At this time he specialised in political art which made him famous in China, particularly for painting a series of works featuring girls of the Red Guards. During the time of Mao's Cultural Revolution (1965-1968) women

were encouraged not to be women, but to be part of the Homogeneous mass, androgynous workers wore loose clothing and bowed their heads to hide their natural curves. Zhang's sister and friends were members of the Red Guard who were subdued to this rigid policy. Zhang brought them back to life in a series of paintings intended to enhance the rare femininity and feelings of these women in contact with the combat environment. From these beginnings he continued to paint this central theme, depicting beautiful Chinese women in Red Guard attire. This style developed to date, further enhancing his reputation in this field. Zhang was born in Guangzhou in 1953 and is now a celebrated portrait artist, renowned for his Red Guard Series. To date he has been showered with many awards within China and outside, 1990, "Girl From The Yao Tribe" 11th Asia Olympics', Chinese Sports Art Exhibition, 1992, Golden Hope Gold Medal Award, "A Prosperous China" Award Competition, 2000 "How Steel is Made" Outstanding Award, "Love For China" Art Exhibition', just to name a few. His paintings have been sold in all the major auction houses of the world and his works have continued to increase in value over the past 10 years. He had a solo exhibition in Hong Kong in 2004, titled "China Circa 1968". He has works in public collections and museums in China. His works continue to be purchased by major galleries, museums, art galleries and private collections worldwide, in Australia, Austria, Belgium, China, France, Germany, Hong Kong, Indonesia, Italy, Japan, Holland, Philippines, Singapore, Switzerland, Taiwan, United Arab Emirates, United Kingdom and United States, to mention a few, such is his reputation to date and popular appeal of his subject matter. The painting we are offering at our auction is considered to be his best, most important work to date. It shows a female Red Guard in uniform, holding a machine gun, with arms outstretched in a most exuberant pose of beauty and confidence. The size of the painting is 120 by

100 cms. It is signed in Chinese by the artist. The painting was done in 2006 and purchased by the vendor in Hong Kong, from the Connoisseur Art Gallery, the artist's agent. The original Certificate of Authenticity and receipt from the Connoisseur Gallery is included. This is a genuine work by Zhang Da Zhong and is of the date stated in this preamble. A fine major work. Please Note This Lot Will Be Sold On 31st May As Lot 859 Please Note This Item Will Be Sold 31st May As Lot 859 Estimate: £18,000.00 - £20,000.00



Lot: 744
 Pair of 'Blanc De Chine' Chinese Figurine Lamps, wooden bases. Estimate: £60.00 - £80.00

Lot: 741
 A Very Fine Quality Imari Charger of Large Size. Painted with the Imari fan pattern, finely painted amongst panels of peonies and chrysanthemum in the typical Imari palette. Stilt marks to the reverse of the dish. c.1860's. Excellent condition. Estimate: £600.00 - £800.00



Lot: 745
 Oriental Style Silver Metal Inkwell with Cover. Estimate: £30.00 - £40.00

Lot: 741B
 Chinese Embroidered Silk Picture depicting two boys playing. Chinese late 19th Century. 23x24" Estimate: £50.00 - £80.00



Lot: 745A
 Two Oriental Style Trade Tokens. Estimate: £30.00 - £40.00

Lot: 742
 Chinese Ming Dynasty Celadon Glaze Dish. 11" in diameter. Estimate: £125.00 - £150.00



Lot: 746
 Ivory and Wooden Skeleton Samurai Netsuke. Estimate: £40.00 - £60.00

Lot: 743
 Chinese, Famille Verte, 19th Century, Hand Decorated Dish, with a central panel design, inside floral borders and a reticulated rim. It is 19.5cms in diameter and in excellent condition. Estimate: £40.00 - £60.00



Lot: 746A
 Two Carved Bone Pendants. Estimate: £30.00 - £40.00

Lot: 747
 An Early Nineteenth Century Copy Chinese Imperial Blue Sung Peach Shaped Water Dropper. 6 inches in height. Estimate: £40.00 - £60.00





Lot: 749
 Hand Carved Camphor Chest Style Cigar or Deed Box, raised on bracket feet, decorated with Oriental river scenes, mahogany stain with dark brown edges, coppered brass, scallop edged lock plate and hasp; 13.5 inches wide x 8.75 deep x 9 high including feet; plus Anglo-Indian style wooden box with foliate carving; 8.5 inches wide x 5.5 deep x 2.5 high (2)
 Estimate: £80.00 - £100.00



Lot: 751D
 A Pair Of Japanese 20th Century Reticulated Bulbous Shaped Vases of very delicate form. Marks to the base together with a small vase of the same type. Each 7" in height
 Estimate: £80.00 - £120.00



Lot: 749A
 Bronze Figure of an African Tribes Woman Carrying Water. Attributed to Haganauer. 16 inches high.
 Estimate: £60.00 - £80.00



Lot: 752
 Late 19th Century Japanese Satsuma Teapot, Kyoto Style, of fine quality and gilding, depicting a serpent coiling itself around the body of the pot, intermingled with Japanese Monks & Immortals. Large character marks to base. Meiji Period. 7" in height.
 Estimate: £100.00 - £150.00



Lot: 750
 Bronze Dragon Koro with lid cased to the body with a dragon circling the vase and the lid terminating with a dragon handle. Unmarked Nineteenth Century. 11 inches high.
 Estimate: £40.00 - £60.00



Lot: 753
 Chinese Famille Verte Lidded Jar, decorated with enamel colours depicting elegant ladies, meeting a horseback rider, unmarked to base, late 19th century, measuring 8 inches high, raised on a wooden base.
 Estimate: £60.00 - £80.00



Lot: 750B
 Oriental Style Metal Plaque/Mirror. Central Raised Animals With Figures, Moulded Edge. Diameter 6 1/4 Inches
 Estimate: £20.00 - £40.00



Lot: 753A
 Small Satsuma Moon Vase with kidney shaped opening to front and back, and standing on four splayed, gilt feet, the body delicately hand painted with polychrome chrysanthemums, the handles with green bamboo, the front with the addition of a small crane standing by water, with irises to the forefront, all finished with an abundance of fine gilt, the whole on a typical Satsuma cream ground; 4.5 inches high, plus small circular Satsuma pin dish showing what appears to be a watermill by a river to the right, with Mount Fuji in the distance, hand enamelled and gilded on a deep blue ground with gilt scalloped rim; 3.75 inches in diameter; gilt on iron red character mark to underside(2)
 Estimate: £40.00 - £60.00



Lot: 751
 Prunus Pattern Chinese Sleeve Vase, with underglaze character marks to base. 12 inches high. Late 19th century, together with another sleeve vase decorated with birds amongst foliage and with character marks. 12 inches high, late 19th century.
 Estimate: £60.00 - £80.00



Lot: 754
 Late 18th Century Japanese Hibatchi Bulbous Imari Vase, finely decorated with floral and gilt decoration. 8 inches high x 8 in diameter
 Estimate: £100.00 - £140.00



Lot: 759
 A Chinese Bronze Censor, on tripod base terminating with a Dog of Foo finial. Character seal mark to the base. Lion king ring handles. 15 inches in height.
 Estimate: £30.00 - £40.00



Lot: 755
 Nanking Blue and White Chinese Platter, of oblong form, hand painted in underglaze blue, depicting a garden scene, late 18th century.
 Estimate: £100.00 - £140.00



Lot: 760
 A Lime Green & White Peking Cameo Glass Bowl with Maoist symbols carved to the body. 4.5" in diameter,
 Estimate: £40.00 - £60.00



Lot: 756
 Three Chinese Carved Ebonised Stands for vases
 Estimate: £30.00 - £40.00



Lot: 761
 Japanese Sake Boxed Set, comprising two sake cups and one sake bottle. Grey ground with green foliage design.
 Estimate: £20.00 - £30.00



Lot: 757
 Six Pieces of Oriental Ware, comprising vases and bowls, together with a figure-group of lovers in a swing, label to base reading 'Pascal', the figure signed to bottom, 'Miriam', (7).
 Estimate: £20.00 - £40.00



Lot: 762
 Chinese Heavy Bronze Model Of A Mythical Pi Xiu Dragon, which is believed to bring wealth & happiness to its owner. It is 26cms in length & 8cms in height. In excellent condition with good patina. It is a solid piece weighing 1.2kgs.
 Estimate: £230.00 - £250.00



Lot: 758
 A Chinese Famille Rose Decoration Plate, marks to the back in red. 9.2 inches diameter.
 Estimate: £20.00 - £30.00



Lot: 762B
 Large Japanese Blue and White Charger, 18 inches in diameter, finely decorated with a bird on a branch of flowering cherry blossoms. The underside has 9 stilt marks. Late Meiji period.
 Estimate: £120.00 - £150.00



Lot: 758A
 A Part Canton Famille Verte Teaset of 24 Pieces comprising 6 cups, saucers, sideplates, 1 teapot, sugar bowl with lid, finger bowl and cream jug. Painted with an unusual fighting cock design amongst floral decorations.
 Estimate: £150.00 - £180.00



Lot: 763
 A Very Fine Quality Chinese Bronze Vase, heavily cast to the body and decorated with two 5 claw dragons interlocked 'chasing the flaming pearl'. To the side there are two Kylin cast heads. A fine gilded rubbed patination to the base is a large

cast character mark entwined with dragons. 18/19th century. 9 inches high.
 Estimate: £120.00 - £150.00



Lot: 764
 An Unusual Chinese Mottled Green Soapstone Figure of a man holding a candle stick in the hand and leaning on a one horned goat. Nicely carved with detail. c.1860-80's. 6.5 inches high.
 Estimate: £60.00 - £80.00



Lot: 768
 Chinese Famille Rose Decorated Ginger Jar of Small Size depicting four laughing boys in a garden setting with a Sage drinking tea. Nineteenth Century.
 Estimate: £30.00 - £40.00



Lot: 765
 17th Century Chinese Kraak Style Plate, decorated with Chinese symbols to the outer border, with a central floral pattern, in underglaze blue, the reverse with a floral edge and two rings with inner Buddhist symbols; 8.5 inches in diameter
 Estimate: £120.00 - £150.00



Lot: 769
 A Chinese Biscuit Porcelain Figure of a Lion Dog and Rider in a Sancai - type glaze. 19th Century Height 13cm Length 11cm.
 Estimate: £60.00 - £75.00



Lot: 766
 A Khang Shi Decorated Plate, with a central panel painted with traditional palette, flowers amongst bamboo trees, with a decorated rim depicting small coconut trees. No marks to the reverse. Nice crisp colour and condition.
 Estimate: £50.00 - £80.00



Lot: 769A
 Box Containing a Small Collection of Blue and White Oriental Porcelain, comprising two tapering vases, two teapots, bowl, etc.
 Estimate: £20.00 - £40.00



Lot: 766A
 A Fine Quality Chinese Pale Celadon Colour Jadeite Carving Of A Pheasant Bird & Chicks sitting on a branch amongst large flower heads. Carved & of fine detailing. The Greenish stone consistent throughout. The vendors grandfather purchased in Hong Kong in the 1930's. With fitted hardwood stand. 7" in height.
 Estimate: £600.00 - £800.00



Lot: 769E
 Two Chinese Tea Pots, in blue and white. Plus a small collection of various Oriental items.
 Estimate: £15.00 - £20.00



Lot: 767B
 Oriental Part Teaset (19) pieces in total comprising 9 cups and 10 Saucers.
 Estimate: £30.00 - £40.00



Lot: 770
 Chinese Bronze and Enamel Pot with scenes of Chinese gardens with figures. Ringed with Cloisonne decoration. Late Nineteenth Century. 7.75 by 8 inches.
 Estimate: £60.00 - £75.00



Lot: 772
 Japanese Early Meiji Period High Quality Satsuma Lidded Bowl, beautifully hand decorated in polychrome enamels and fine gilding with a lakeside scene of various types of geese and ducks, gilded borders and two floral motifs on the inside of both

the bowl and the lid. It is 19cms in diameter and 10cms high, in first class condition with very minimum age wear to the gilding, with the satsuma mon and signature in gold to the base. Estimate: £380.00 - £450.00



Lot: 776

Chinese Bronze Censer with Light Brown Patination and Loop Top Handles, supported on 3 tapering feet. Fully marked to the base with a cast Chinese character seal. 5" in height. 9" in diameter. Estimate: £150.00 - £200.00



Lot: 773

Chinese Celadon Jade Ruyi Sceptre, early 20th century, beautifully carved from a single piece of Jade, featuring an Elephant to the head plate and Kwan Yin plus various flora to the stem. It is 40.5 inches in length, 11.5 inches in depth and 6.5 inches high. In excellent condition with no damages or losses. Estimate: £800.00 - £1,000.00



Lot: 777

Chinese Early 20th Century Carved Soapstone Group Figure, 'Horses at the Gallop'. 7.25 inches high, 12 inches wide. Estimate: £60.00 - £80.00



Lot: 773C

A Large Chinese Ancestor Portrait ink on paper. Glazed and Framed 19th Century. Estimate: £80.00 - £100.00



Lot: 778

Japanese "Taizan" Satsuma Pottery, Studio Style Vase of tapered square section, rising to a flared mouth and decorated over the glaze with thick enamels and gilding, with four differently designed panels, featuring Lotus, Prunus Blossom, Cascading Wisteria and Chrysanthemum, the rest of the body decorated with "Tube-lined" style scrolling and random designs, with a formal border to the base rim. It is 30.5cms high and the width, corner to corner is 16cms. It is in overall excellent condition, with one or two very minor glaze lines. It is circa 1890 - 1910, late Meiji period and is inscribed to the base "Da Nihon Taizan Sei." Estimate: £680.00 - £750.00



Lot: 774

Very Interesting Japanese 'Totai' Vase, which is made using cloisonne techniques with a tree bark background, on a porcelain base. Featuring a flowering tree and butterflies. There is an impressive hand written signature to the base. It is 18.5cms in height & 13cms in width. In overall good condition. Estimate: £120.00 - £140.00



Lot: 775

A Fine Quality Pair of Silver Ware Japanese Cloisonne Midnight Blue Vases, each decorated with a three toed coiling Dragon, height 6 inches, late Meiji period. Estimate: £200.00 - £300.00



Lot: 779

Large Chinese / Japanese Unusual and Striking White Ceramic "Woven Lattice Style", narrow necked, ovoid vase, which is very cleverly made to imitate a naturally grown reed woven structure, and is a substantial 35 inches high and 16 inches wide, in excellent condition. Estimate: £100.00 - £140.00



Lot: 780

Superb Japanese Meiji Period Miniature Satsuma Lidded Patch Box, by the renowned Kinkozan. It is very beautifully hand decorated with various butterflies on the lid and on the bowl. It is only 6.4cms in diameter, but the finely detailed hand gliding and enamel work is outstanding. It is in perfect condition and is marked to the base with Kinkozan signature in gold. Estimate: £350.00 - £400.00



Lot: 786A

A Large Chinese Carved Hardwood Figure of a Lohan, one hand pointing to the sky, the other holding a knotted branch, at his feet standing a small type Foo Dog, 18th / 19th century, 45 inches high. Estimate: £300.00 - £400.00



Lot: 782

Kangxi Blue and White Plate, hand painted with a main scene of a man with walking stick, on a bridge approaching a village, with other stylised elements cutting into the picture to top and side, the border comprising 6 segments each containing a similar floral vignette; painted tan brown rim and scant blue decoration to underside of rim; 10.75 inches in diameter (a/f several tiny chips to rim and hairline crack from rim to edge of scene) Estimate: £40.00 - £60.00



Lot: 787

Chinese Porcelain Footed Shallow Bowl, hand decorated with fruit/foliage to the interior and the underside, with foliage, fruit, bats and buddhist symbols, mark to the base together with an old paper catalogue label. It is 14.5 inches in diameter and 6 inches high. In overall good condition. Estimate: £50.00 - £80.00



Lot: 787C

An Unusual Horn Shaped Kris (South East Asian) with elaborate carved shaped handle and carved scabbard with an animal motif and steel shaped blade. Nineteenth Century. Estimate: £70.00 - £80.00



Lot: 784

Chinese Famille Verte Crackle Ware Vase, decorated with soldiers on horseback with attendants, profusely decorated on both sides of the vase. Incised character mark to the base. 18 inches high. Late 19th century. Estimate: £80.00 - £120.00



Lot: 788

Fine Quality Soapstone Chinese Candlestick Holder depicting a Heron amongst foliage standing on rocky outcrop with integral black soapstone base. Estimate: £30.00 - £40.00



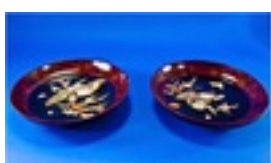
Lot: 785

Chinese Dehua Style White Ceramic Basket Weave Vase, with panel decorated shoulders and neck, and rope finished base. It is 30cms high and 15cms wide. In excellent condition. Estimate: £100.00 - £140.00



Lot: 788B

Japanese Hand Painted Pair of Tall Tapered 19th Century Vases. Decorated with images of birds and flowers on a deep red ground colourway. Each stands 18.75 inches tall. One vase has damage to neck and rim area. Estimate: £60.00 - £80.00



Lot: 786

Pair of Japanese Lacquered Round Wall Plaques, raised and carved in mother of pearl and bone, depicting an eagle on a branch and a rooster. Late Meiji period, 12 inches in diameter. Estimate: £50.00 - £80.00



Lot: 789

Chinese - Kangxi 18th Century Blue and White Wine Jar. 1662-1722 and of the period. Decorated with continuous floral and bird scenes. Stands 8.5 inches high.

Estimate: £120.00 - £150.00



Lot: 789A

Set of Six Chinese Coffee Cans and Saucers, hand painted, two pairs of opposing scenes surrounding a central roundel, to the saucers, each scene appearing once on the cans, all separated by green and blue enamelling and bordered in gilt (12)

Estimate: £15.00 - £25.00



Lot: 793

An Unusual 20th Century Chinese Bone Carved Blade Dagger in Sheath, Intricately Engraved and carved with Chinese motifs. The blade is also bone. With wood stand. Total length 17.5 inches, dagger 11.5 inches.

Estimate: £30.00 - £40.00



Lot: 790

Pair of Japanese Satsuma Imari Patterned Vases, 20th century, each measuring 12 inches high.

Estimate: £30.00 - £40.00



Lot: 795

Miniature Cantonese Famille Rose Vase, 4.5 inches high, Chinese painted white metal money bar plus metal crab(3)

Estimate: £20.00 - £30.00



Lot: 791

An Unusual Chinese Bronze of a Taoist Monk in formal attire holding his beard. One arm outstretched to the back, standing on a bronze scrolled base/ platform, enclosed by a fence. Unmarked. 18/19th century. 9.75 by 7.5 inches.

Estimate: £150.00 - £200.00



Lot: 795A

Oriental Inkstand, red/black painted, moulded, plaster/composition with design of dragons breathing fire to both base and cover; impressed Chinese character marks to underside

Estimate: £20.00 - £30.00



Lot: 792

Japanese Highly Gilded Satsuma Pottery Vase Circa 1900, of inverted baluster form on a flared foot and rising to a cylindrical neck with everted mouth, the shoulders with a moulded imitation of a highly decorated, brocaded cloth tied over the mouth of a sake jar, fastened with a cord and a bow. The main body features a large number of Bijin at various leisurely pursuits, the base rim with a geometric border design. It is 21" high and 15" wide, in perfect condition and signed to the base with a seal of "Satsuma Hodada"

Estimate: £480.00 - £500.00



Lot: 796

Chinese Hand Painted Polychrome Vase, shaped cartouche to the front showing an exterior scene of a woman leaning on a table conversing with a young boy, a similar cartouche to the back shows a bird on a tree branch surrounded by blossom, the rest of the body with enamelled stylised floral motifs on a yellow ground, the neck with geometric leaves and band on a similar ground; 12 inches high; 4 character mark to underside(a/f hole drilled for lamp conversion and pieced re-glued to neck and rim)

Estimate: £20.00 - £30.00



Lot: 797

Japanese Small Good Quality Six Sided Dish, hand decorated with a family group on a terrace, the sea and Mount Fuji in the background, the exterior decorated with gilding on solid cobalt blue, with good signature to the base. It is 11.5cms in diameter and 4.5 cms high, in excellent condition, with a small

amount of age wear to the overglaze gilt.
 Estimate: £100.00 - £120.00



Lot: 798
 A Large Chinese Bamboo Brushpot, the exterior finely decorated throughout with minute Chinese characters from the Thirty Six Strategems. Height 17cm, Diameter 14cm.
 Estimate: £50.00 - £80.00



Lot: 799
 Chinese Kangxi Chinese Imari Plate, very highly decorated in iron red, cobalt blue & gold, with central panel, surrounded by a floral pattern, and and two bee hives. All inside a formal rim border with floral & geometric designs and a cafe-au-lait painted rim. The reverse also heavily decorated with four cartouches and scrolling flowers. Also mark to the base inside a double blue circle. It is 21cms in diameter, in good condition, with a little wear to th overglaze gilt and one minor rim chip and two tiny rim frits. Of the period 1662-1722.
 Estimate: £200.00 - £220.00



Lot: 1
 Russian Works Of Art, Fabulous Pair Of Reliquary Panagias Two Jewelled and Gem-Set Silver-Gilt Panagias. Apparently Unmarked, Russian, Late 19th Early 20th Century. One Set With Four Large Alexandrites And Alternating Citrines Set In A Very Fine Wirework Mount With Central Icon, Painted Enamel On Copper Showing The Madonna, Initialled In Cyrillic Lower Right. Closed Back With Engraved Decoration And Central Initials Below A Crown. The Other Set With Amethyst Stones Around A Central Painted Enamel On Copper Icon Showing The Madonna And Child, With Painted Cyrillic Script, Complete With Chain. Each Approx: 5 3/4 inches. (13.5 cm.) high, excluding chain (2)
 Estimate: £8,000.00 - £12,000.00



Lot: 3
 9ct Gold Diamond Bracelet Set With Three Rows Of Round Brilliant Cut Diamonds, Fully Hallmarked, Length 7 1/2 Inches.
 Estimate: £300.00 - £400.00



Lot: 5
 9ct Gold Ruby And Diamond Cluster Ring, Fully Hallmarked, Ring Size S 1/2
 Estimate: £60.00 - £70.00



Lot: 6
 Victorian 18ct Gold Dress Ring, Set With A Single Yellow Faceted Stone In A Floral Castellani Style Mount, Fully Hallmarked (Rubbed) For London 1861, Ring Size M-N
 Estimate: £120.00 - £140.00



Lot: 10
 Large Emerald Cut Smoky Quartz Pendant Approx 80cts (28x26x18mm) Set In A Wire Work Gold Mount, Suspended On A 14ct Gold 24 Inch Chain.
 Estimate: £200.00 - £240.00



Lot: 11
 Ladies 9ct Gold Record Wristwatch, White Enamelled Rectangular Dial With Gilt Batons, Marked Record De Luxe. Manual Wind Movement, With Integral 9ct Gold Textured Bracelet Strap, Fully Hallmarked For London 1972, Complete With Original Box And Retailers Card Tag, Looks To New Old Stock, Gross Weight 41 Grammes. Working Order At Time Of Cataloguing But Not Tested For Accuracy. All Watches And Clocks Sold As Found.
 Estimate: £400.00 - £420.00



Lot: 13A

Ladies 1920's Nine Carat Gold Cased Wrist Watch surrounded on a gold plated bracelet. Not working A/F. Plus a good 1930 's nursery fob watch.
Estimate: £30.00 - £40.00

18th/19th Century.
Estimate: £400.00 - £600.00



Lot: 38D

An Unusual Novelty 9ct Gold Pendant. Realistically designed as a razor blade (note: it's not sharp!). Fully hallmarked for London 1976. 5 grams.
Estimate: £50.00 - £70.00



Lot: 14

White Metal Square Shaped Ashtray, The Base Inset With A British Trade Dollar Dated 1900, Minted At The Bombay Mint.
Estimate: £30.00 - £40.00



Lot: 41E

A Dark Green Nephrite Jade and Silver Scimitar Shaped Pendant on a Silver Chain. Both pendant and chain with 925 marks.
Estimate: £40.00 - £60.00



Lot: 19A

Ladies 1920's 9 Carat Gold Wrist Watch. Fully hallmarked Birmingham 1926 with original Bakelite box. Working order.
Estimate: £80.00 - £100.00

Lot: 46D

Two Articulated Fish Pendants.
1). A 9ct gold fish. 1.5 inches long.
2). A silver gilt and blue green and silver enamel pendant. 1 3/4 inches long.
Estimate: £50.00 - £70.00



Lot: 22

Omega 9 Carat Gold Ladies Manual Wind Wristwatch with 9 carat gold integral bracelet. Fully hallmarked 9.375 date 1974. Working order at time of cataloguing. With original box and papers.
Estimate: £200.00 - £300.00

Lot: 49D

A 9ct Gold Twin Bar and Scroll Brooch set with seed pearls. Hallmarked for Chester 1913 by Tand G.
Estimate: £60.00 - £80.00



Lot: 27

Omega Nine Carat Gold Vintage and Manual Wind Ladies Wristwatch with 9 carat gold integral bracelet. Marks 9.375 and dated 1963. Working order at time of cataloguing. With original box and papers.
Estimate: £150.00 - £180.00

Lot: 52A

Early 20thC Silver Plated Epergne, Central Tapering Column With Pierced Gallery Together With Three Similar Branches, Reg Mark, Height 14 1/2 Inches.
Estimate: £60.00 - £80.00



Lot: 28

A Fine Chinese Pale Jade Pendant Disc, intricately pierced and carved, depicting two seated boys amongst foliage and birds, the reverse fully carved showing the backs of the two boys. Slight damage to the top of the pendant. Diameter 2.3 inches.



Lot: 57D
A 9ct Gold Chain Link Bracelet,
5.9 grams. Apparently unmarked,
but tests 9ct.
Estimate: £60.00 - £80.00



Lot: 73
Two Silver Bookmarks With
Butterfly Finials, Marked 925
Estimate: £30.00 - £40.00



Lot: 62
Gents Set Of Silver Cufflinks, Of
Circular Form With Chain Links,
The Fronts Showing An Image Of
A Horse And Jockey. Stamped
925
Estimate: £40.00 - £50.00



Lot: 77E
A Brass Vesta Case In The
Image Of Mr Punch with hinged
opening and striker. Unmarked.
Estimate: £40.00 - £60.00



Lot: 67E
A Silver Plated Stamp Holder
Designed As A Miniature Bag
with hinged lid decorated with a
blue enamel flower on a chain.
Estimate: £20.00 - £30.00



Lot: 105D
Stephen Webster. A good pair of
silver cufflinks formed as the
heads of two bull terriers. The
fixed links ending in oval black
enamelled union Jack fastenings.
Stephen Webster (M.B.E.) is
recognised as one of Britain's
leading master jewellers.
Estimate: £80.00 - £120.00



Lot: 68
Gents Pair Of Silver Cufflinks,
The Fronts Modelled As Three
Entwined Triple Rings, Complete
In Box
Estimate: £40.00 - £50.00



Lot: 112D
A Pair of Edwardian Silver
Servers with shovel type pointed
bowls. The shovel surface nicely
engraved with a floral design.
Initialed. Probably for serving
pate, sardines etc. Each 5.5
inches long. Hallmarked for
Sheffield 1904 by T.L.
Estimate: £40.00 - £60.00



Lot: 70
18ct White Gold Diamond
Necklace, Set With Round
Brilliant Cut Diamonds In A Floral
Design. Estimated Diamond
Weight 4.00cts. Unmarked, Tests
High Carat Gold. Complete With
Beverly Hills Red Leather Case,
Retailers Jewels By Eve.
Estimate: £700.00 - £800.00



Lot: 121D
Sampson Morden and Co. 9ct
gold twin blade penknife. Fine
engine turned body with ring
suspension. Hallmarked for
London 1928. 3 inches long.
Estimate: £80.00 - £120.00



Lot: 72
Art Deco 1930's Platinum and
Diamond Cocktail Watch, marked
platinum.
Estimate: £150.00 - £200.00



Lot: 123D
A Sterling Silver Tiffany & Co Pill
Box, square shape with a realistic
fox head to the hinged lid, the
overhanging fox snout forming
the clasp. Marked "Tiffany and
Co 925 sterling Italy."
Estimate: £60.00 - £80.00



Lot: 130E

An Edwardian Silver and Aventurine Bookmark. Dagger shaped with tendril and leaves below the glass aventurine handle. Hallmarked for Birmingham 1908 by C and M. 4" long.
Estimate: £40.00 - £60.00



Lot: 191

Victorian Gold Guard Chain, Unmarked Tests 9ct, Length 60 Inches, Weight 38 Grammes.
Estimate: £380.00 - £420.00



Lot: 133D

An Unusual Edwardian Novelty Pair of Sugar Tongs. Realistically designed as a lobster claw. Hallmarked for London 1905.
Estimate: £40.00 - £60.00



Lot: 192

Two Silver Stone Set Dress Rings.
Estimate: £20.00 - £25.00



Lot: 153

Two Pairs of Turquoise Drop Earrings, one of teardrop shape below a small round turquoise, all independently articulated, on shepherd's hook fittings, 2.25 inch drop, the other with single drops comprising a round turquoise, a smaller round black agate and a smaller turquoise above, on shepherd's hook fittings, 1.75 inch drop
Estimate: £20.00 - £40.00



Lot: 194

9ct Gold Diamond Cluster Ring, Fully Hallmarked, Ring Size K.
Estimate: £50.00 - £60.00



Lot: 159

Red Coral Ethnic Style Necklace and Bracelet, the geometrically cut beads interspaced with smaller red and blue dyed coral nuggets to both pieces, the necklace fastened with a lobster claw clasp and the bracelet threaded on jeweller's elastic; necklace 18 inches long, bracelet 7.5 inches plus stretch
Estimate: £30.00 - £40.00



Lot: 195

Gents Tag Heuer Professional Wristwatch, WA1210, Quartz Movement. Blue Dial and Bezel, Original Leather Tag Strap.
Estimate: £160.00 - £180.00



Lot: 160D

A Quality Silver Cigarette Case. Fine engine turned curved body with canted edges decorated in a Greek key design. Silver gilt interior and vacant cartouche. 3.5 ozs. Hallmarked for Birmingham 1928 by M.H. Ltd.
Estimate: £70.00 - £100.00



Lot: 196

Silver Hallmarked Thimble + 2 Others
Estimate: £30.00 - £40.00



Lot: 206

Two Georgian Silver Salt Spoons.
Estimate: £40.00 - £50.00



Lot: 207
Rolex Oyster Perpetual Datejust Ladies Wristwatch; Ref: 69173
18ct Gold And Stainless Steel, Champagne Dial, Applied Baton Numerals, Center Seconds With Date Aperture. Jubilee Bracelet Strap. With All Boxes And Paperwork, Bought 1994.
Estimate: £1,600.00 - £1,800.00



Lot: 218
Silver Pendant, Modelled In The Form Of A Horse Set With White Faceted Stones, Suspended On A Fine Link Silver Chain.
Estimate: £25.00 - £30.00



Lot: 208
Large Silver Blue Enamelled Reticulated Fish, Length 120mm
Estimate: £35.00 - £45.00



Lot: 219
18ct Gold Ladies Enamelled Fob Watch, White Porcelain Dial With Blue Enamelled Arabic Numerals And Blued Steel Hands, The Chased Case Highlighted In Cobalt Blue Enamel, The Reverse With An Enamelled Lakeland Scene, 32mm Hallmarked Case With Engraved Retailers Name To The Interior "Northern Goldsmiths Co Newcastle Upon Tyne", Complete With Original Fitted Silk Lined Case. Late 19thC
Estimate: £300.00 - £350.00



Lot: 212
Two Silver Enamelled Articulated Fish Pendants.
Estimate: £25.00 - £35.00



Lot: 221
Silver Mounted Amber Pendant And Chain.
Estimate: £30.00 - £40.00



Lot: 214
Six Pairs Of Silver Stone Set Earrings
Estimate: £40.00 - £50.00



Lot: 222
Equestrian Interest, Three Silver Brooches.
Estimate: £30.00 - £40.00



Lot: 216
Silver Tiffany Style Necklace. Length 17 Inches.
Estimate: £25.00 - £30.00



Lot: 223
Murano Glass Pendant Necklace and Earring Set, golden amber and silver aventurine glass circular swirl pendant suspended from a strand of honey coloured, faceted crystals, dark amber colour ovals and golden aventurine glass twisted beads, plus similar earrings
Estimate: £35.00 - £45.00



Lot: 217
A Modern Replica Breitling Chronometre Navitimer Gents Wristwatch on a stainless steel bracelet.
Estimate: £60.00 - £80.00



Lot: 224
Pair F Ladies 9ct White Gold Earrings, Set With Rows Of Multi Coloured Princess Cut Sapphires, Fully Hallmarked, French Clips.
Estimate: £600.00 - £650.00



Lot: 238
Collection Of Five Silver Lockets.
Estimate: £30.00 - £35.00



Lot: 229
Two Silver Cross Pendants, Set With Moonstone And Turquoise Coloured Stones.
Estimate: £25.00 - £30.00



Lot: 245
Victorian 15ct Gold Ring, Set With A Central Red Marquise Cut Stone Between Two White Faceted Stones, Blue Enamelled Band, Partial Hallmark, Ring Size N $\frac{1}{2}$
Estimate: £90.00 - £110.00



Lot: 232
Cultured Freshwater Bronze Pearl Necklace, Bracelet and Earrings Set, rich chocolate colour pearls with a bronze lustre, the necklace and bracelet finished with sterling silver beads and lobster claw clasps, the matching stud earrings with sterling silver butterfly and post fittings; necklace 17.5 inches long, bracelet 7.5(3)
Estimate: £40.00 - £60.00



Lot: 248
Gold Coloured Dunhill Lighter D80224
Estimate: £60.00 - £70.00



Lot: 235
Gold Plated Dupont Lighter
Estimate: £40.00 - £50.00



Lot: 249
9ct Gold Letter "S" Pendant, Set With CZ Stones, Suspended On A Fine Link Chain.
Estimate: £25.00 - £35.00



Lot: 236
9ct Gold Omega Wristwatch, Champagne Dial With Black/Gilt Baton Numerals, Manual Wind. Gold Plated Bracelet Strap. Working Order At Time Of Cataloguing But Not Tested For Accuracy. All Watches And Clocks, Sold As Found.
Estimate: £130.00 - £150.00



Lot: 250A
Modern 12 Place Canteen of Cutlery, in a mahogany case, measuring 19 inches high, 30 $\frac{1}{2}$ wide and 19 deep.
Estimate: £50.00 - £70.00



Lot: 251
A Fine Quality Japanese Inro With A Combination Of Six Compartments, decorated with an unusual design of Japanese hats & umbrellas. Highlighted in gold, the oval cylindrical body is lacquered with a tea dust colour and the interior compartments

are lacquered in gold speckled finishes. 18/19th Century. Edo period. unsigned. 3.5" in length. Estimate: £400.00 - £600.00



Lot: 262
9ct Gold Topaz And Diamond Dress Ring, Fully Hallmarked, Ring Size N. Estimate: £120.00 - £140.00



Lot: 252B
Two Silver Stone Set Bracelets. Estimate: £45.00 - £55.00



Lot: 263
Modern Enamelled Box, Of Circular Form, Hinged Lid, Surmounted With A Peacock, Estimate: £20.00 - £25.00



Lot: 254
9ct Gold Pendant Cross, Set With Calibre Cut Sapphires And Diamond Terminals, Fully Hallmarked, Height Including Bale 30mm Estimate: £55.00 - £65.00



Lot: 264
Silver Flat Panther Link Necklace, Length 18 Inches. Estimate: £45.00 - £55.00



Lot: 257
18ct Gold Five Stone Diamond Ring, Five Graduating Round Cut Diamonds, Fully Hallmarked, Ring Size M Estimate: £120.00 - £140.00



Lot: 265
Silver Enamelled Dragonfly Brooch. Stamped 925 Estimate: £30.00 - £40.00



Lot: 259
Silver Bangle With Double Horse Shoe Fastener. Stamped 925. Estimate: £35.00 - £40.00



Lot: 267
19thC Yellow Metal Mourning Brooch, With Glazed Front, Chased Floral Border. 19x22mm Estimate: £45.00 - £55.00



Lot: 261
Two Thomas Sabo Charm Club Silver Necklaces And Pendants. Estimate: £45.00 - £55.00



Lot: 270
Silver Bookmark With Butterfly Finial, Together With A Silver Cigar Piercer. Estimate: £25.00 - £30.00



Lot: 271
Five 9ct Gold Dress Rings, Set With Coloured Stones, All Fully Hallmarked.
Estimate: £60.00 - £70.00



Lot: 280
Modern Jewellery Box, Containing A Collection Of Costume Jewellery, Pendants, Earrings, Brooch etc
Estimate: £20.00 - £30.00



Lot: 272
Black Pearl Pendant Drop 8x7mm, Suspended On A Gilt Chain.
Estimate: £25.00 - £30.00



Lot: 281
Two Silver Dress Rings + 1 Other.
Estimate: £25.00 - £30.00



Lot: 273
Collection Of Silver Jewellery Comprising Tennis Bracelet Set With Princess Cut CZ's, Drop Earrings Set With Turquoise Coloured Stones And A Necklace And Earring Set, Mounted With Red Cabochons.
Estimate: £40.00 - £60.00



Lot: 285
18ct White Gold Diamond Choker/Necklace, Set With Approx 10.00cts Of Round Modern Brilliant Cut Diamonds, Hallmark Rubbed. Length 15½ Inches.
Estimate: £4,200.00 - £4,800.00



Lot: 274
Gents Silver Cufflinks, With Rectangular Enamelled Fronts Showing Masonic Emblems. Complete With Box
Estimate: £45.00 - £55.00



Lot: 286
9ct Gold Mounted Cameo Brooch And Earrings.
Estimate: £30.00 - £40.00



Lot: 278
Gents Set Of Silver Cufflinks, Of Circular Form With Chain Links, The Fronts Showing An Image Of Fox Heads. Stamped 925
Estimate: £40.00 - £50.00



Lot: 287
Early Victorian Gilt Metal Mourning Brooch, Central Square Black Onyx Set With a Seed Pearl, The Border In Black Enamel Reading 'In Memory' Chased Scroll Edge, The Reverse, Closed Back, Engraved And Dated 1845. 28 x 31mm
Estimate: £60.00 - £80.00



Lot: 279
Pair Of Gents Of Silver Cufflinks, Modelled In The Form Of Horse And Rider. Complete With Box
Estimate: £30.00 - £40.00



Lot: 288
Silver Cross, Set With CZ Stones, Suspended On A Silver Chain, Stamped 925
Estimate: £20.00 - £25.00



Lot: 289
18ct Gold Dress Ring, Set With A
White Princess Cut Stone, Fully
Hallmarked, Ring Size P $\frac{1}{2}$
Estimate: £70.00 - £90.00

Estimate: £35.00 - £40.00



Lot: 298
Three Early 20thC Thimbles, Two
With Full Silver Hallmarks.
Estimate: £35.00 - £45.00



Lot: 290
Large Silver Stone Set Ring,
Stamped 925, Ring Size O-P
Estimate: £25.00 - £30.00



Lot: 299
Six Pairs Of Silver Stone Set
Earrings
Estimate: £40.00 - £50.00



Lot: 291
9ct Gold Opal Ring Set With
Three Milk Opals Showing
Flashes Of Greens And Blues,
Set Between Diamond Chip
Spacers, Unmarked, Tests 9ct.
Ring Size O.
Estimate: £70.00 - £80.00



Lot: 300
Two Silver Stone Set Bracelets.
Estimate: £35.00 - £45.00



Lot: 292
Small Mixed Lot Of Modern
Commemorative Crowns
Estimate: £10.00 - £20.00



Lot: 301
Silver Marcasite Pendant,
Modelled In The Form Of A Cat,
Set With Three Red Stones And
Marcasites, Suspended On A
Silver Chain.
Estimate: £25.00 - £30.00



Lot: 293
9ct Gold Diamond Ring, Stepped
Cut Diamond With Major
Inclusions, Ring N, Fully
Hallmarked.
Estimate: £120.00 - £140.00



Lot: 316
A 20th Century Shell Cameo Set
Within a 9ct Gold Oval Frame.
With safety chain. Fully
hallmarked. 1.75 inches high.
Estimate: £40.00 - £60.00



Lot: 296
Silver Art Nouveau Style
Pendant, Of Fan Shape Form
With Pale Enamelled Floral
Decoration, Hallmarked For
Alastair Norman Grant,
Edinburgh. Together With A
Silver Mounted Millefiori Pendant,
Stamped 925.



Lot: 318
A Gold Plated Full Hunter Pocket
Watch Ridex Lever. Good
working order.
Estimate: £30.00 - £40.00



Lot: 320
 Matched Pair of Fine French Ivory Bezique Markers with revolving hand device and shaped, moulded sides. 2 inches in diameter. c 1840/1860
 Estimate: £300.00 - £360.00

Box 19 K.S." The reverse says 'The Earl Of Sefton'
 Estimate: £600.00 - £800.00



Lot: 321
 A Victorian Silver Shell Dish. Hallmarked London 1896, makers mark S.C. Diameter 4.5 inches. 106.2 grams.
 Estimate: £40.00 - £60.00



Lot: 331A
 Collection of Assorted Items, including six napkin rings, set of six horse knife rests, grape handled nut cracker, pair of grape scissors and sugar sifter spoon.
 Estimate: £20.00 - £30.00



Lot: 324
 Rare German Eighteenth Century Ansbach Faience Single Handled Pewter Mounted Tankard or Walzenkrug. The cylindrical body depicting cartouches of coloured flowers. Pewter mounted to the base and cover and connected with a ball shaped pommel thumb piece. The cover containing a coin embossed Josephus II DG Rom IMP SEMP. AVG dated 1788 and AMSM. 10 inches in height.
 Estimate: £400.00 - £600.00



Lot: 370A
 Canteen Containing 26 Pieces, of EPNS, with egg cruet, with four egg cups and spoons, plated teapot and sugar bowl, together with a bag containing a collection of silver plated flatware.
 Estimate: £20.00 - £30.00



Lot: 375
 Fine Pair Of 1920's Miniature Portraits On Ivory. French beauties, measurements including frames: 4.25 x 4" and 4.25 x 3.75"
 Estimate: £80.00 - £120.00



Lot: 325
 Sampson Mordan & Co, Pair Of Silver Salts In The Form Of Two Small Birds. Hallmark Chester 1905. Makers mark SM & Co. Each 1.5" in height.
 Estimate: £120.00 - £150.00



Lot: 378
 Collection of Various Badges, with a few boxes of cuff links.
 Estimate: £10.00 - £20.00



Lot: 327
 A Rare Documentary 18th Century Ivory Badge Holders Pass Dated 1781. In 1781 the Earl of Sefton opened his famous equestrian exhibition theatre at Aintree, Liverpool. Today it is the home of the "International Equestrian Centre and the grand national." The badge is for box 19 at the exhibition. It is of oval form with a pierced hole to the top for hanging from a cord around the neck. On the front of the pass is says "Kings theatre,



Lot: 379
 Kigu Of London Boxed Compact And Lipstick Holder, In White Metal With Central Enamel Floral Design.
 Estimate: £20.00 - £40.00



Lot: 384
 Elkington and Co Silver Posy Bowl. Hallmark Birmingham 1910. Raised on an ebonised stepped plinth. 6.25 inches high including plinth. 152.6 grammes. Estimate: £40.00 - £50.00



Lot: 423
 Foley Intarsio Lidded Comical Figural Tobbaco Jar. Reg. number 364386. Depicts comical figures smoking and drinking in a tavern area. Stands 5.5 inches high. Over painting to border. Estimate: £60.00 - £80.00



Lot: 385
 Canadian, Twentieth Century Indian Elkhorn Scrimshaw. 3.25 inches in diameter. Plus a Nineteenth Century Whales Tooth with 20th Century later image of schooner. Estimate: £30.00 - £40.00



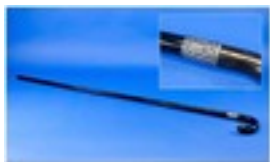
Lot: 424A
 S. Hancock & Sons Lidded Ginger Jar, of inverted baluster form, with over painted print floral foliage on a deep orange ground, gilt finial, stamped to underside, 9 inches high. Estimate: £30.00 - £40.00



Lot: 386
 Small Silver Plated Two Handled Pedestal Bowl, with a ruby glass interior, AF, the bowl with castelated top edge, beaded foot, 4½ inches high. Estimate: £20.00 - £30.00



Lot: 435A
 Royal Doulton Wild Cherry Lambethware Part Dinner Service, comprising 7 dinner plates, 8 dessert plates, 6 large bowls, 6 small bowls, 5 mugs, 8 side plates, 8 saucers, 8 small pots, salt and pepper pots, mustard pot, pourer and jug, no to base, 'L.S. 1038' (61 pieces approx). Estimate: £60.00 - £80.00



Lot: 387
 Silver and Ebony Walking Stick. Estimate: £30.00 - £40.00



Lot: 464
 A Collection of Assorted Character Jugs, various makes, styles and sizes. Approximately 24. Estimate: £20.00 - £40.00



Lot: 406
 Royal Doulton Grace The Slater, HW 2318. Designer Peggy Davies, Issued 1965. 7.5" high. Estimate: £40.00 - £60.00



Lot: 475
 Two Green Wedgwood Leaf Plates. 8.5 inches and 9.5 inches diameter. Estimate: £20.00 - £30.00



Lot: 419
 Two Doulton Vases, tapestry detail on blue body. 10.5 and 8 inches. Estimate: £50.00 - £60.00



Lot: 481A
 Royal Worcester Hand Painted White and Gold Classical Shaped Candlestick. c 1880. Height 10.5 cms. Estimate: £60.00 - £80.00



Lot: 482

Two Various Hummel Figures, 'Meditation', girl carrying a large basket over her left arm and a large letter in her right hand; 4.5 inches high, and 'Street Singer', boy in a top hat and tail coat singing from a sheet of music; 5 inches high(2)
Estimate: £20.00 - £40.00



Lot: 522

Moorcroft Lemon Design Vase by Sally Tuffin. Design introduced 1988 and withdrawn in 1990. Height 12 inches.
Estimate: £160.00 - £200.00



Lot: 485A

Three Various Hummel Figures comprising 'Grandpa's Boy', young boy hiking with rucksack and stick, green hat with orange feather, pale blue shirt; 4.25 inches high, small 'Girl with Doll', with orange skirt and headscarf; 3.5 inches high, and small 'Boy in Top Hat Playing Horn'; 3.25 inches high(3)
Estimate: £20.00 - £40.00



Lot: 530

Moorcroft "Dahlia" Vase. Designer Phillip Gibson. Shape 869/9. Limited edition No. 72/250. Boxed.
Estimate: £280.00 - £300.00



Lot: 489A

Four Various Hummel Figures comprising 'Signs of Spring', girl in blue polka dot apron and red headscarf similar, standing by a fence with a bird perched on top; 5.25 inches high, boy seated in front of a bird on a fence, with a flower, playing 'She Loves Me etc.' 4.75 inches high, 'Apple Tree Boy'; 4.25 inches high, and a young girl feeding two white ducks; 4.5 inches high(4)
Estimate: £30.00 - £50.00



Lot: 530A

Amphora Style Figure of a Fisherman, in pale green trousers with buff colour waders, loose cream overshirt with pink flower sprigs and large brimmed pale green hat, carrying a catch-net under one arm and a cloth bag over the other shoulder, and standing before a mooring post; 19 inches high; impressed numbers to underside
Estimate: £60.00 - £80.00



Lot: 508

A Galle St Clements Nancy Fiancee Pottery Wall Pocket in the form of a Heraldic shield painted with a galleon in full sail, and fleur de lise motifs. Surmounted by a finely modeled prancing lion. Marked to the back St Clements and monogrammed in blue. 13" in height, Crack to top back section.
Estimate: £200.00 - £300.00



Lot: 531

Moorcroft "Elounda" Vase. Designer Alicia Aimison. Shape 576/9". Limited edition No. 181/350. Boxed.
Estimate: £260.00 - £300.00



Lot: 510B

Poole Pottery Vase, of baluster form, hand painted with floral scenes, measuring 6 inches high, stamped to base 267.
Estimate: £30.00 - £40.00



Lot: 532

Moorcroft "Squirrels" Vase. Designer Aryi Davenport. Shape 92/11". Limited edition No. 163/300. Boxed.
Estimate: £300.00 - £340.00



Lot: 533
 Moorcroft "Islay" Vase. Designer Rachel Bishop. Shape 7/7". Boxed.
 Estimate: £170.00 - £200.00



Lot: 541A
 Volkstedt Style Goblet Shaped Ewer, the main body, decorated with a raised panorama of frolicking putti, supported by three fish fish-tailed water nymphs on a quatrefoil marble style base; above the body, below the spout, a putto rides a twin fish-tailed horse, whilst another putto climbs up over the top of the handle to pour refreshment down to the bearded faun, clutching his yellow loincloth, as he supports the upper half of the handle; the rest of the ewer is filled with rococo decoration in shades of pink and blue with gilt highlights; 15.5 inches high overall
 Estimate: £100.00 - £140.00



Lot: 534
 Moorcroft "Maiden Pink" Vase. Designer Philip Gibson. Shape 65/6". Boxed.
 Estimate: £130.00 - £150.00



Lot: 535
 Moorcroft "Snowdon Lily" Vase. Designer Rachel Bishop. Shape 72/6". Limited edition No. 95/200. Boxed.
 Estimate: £130.00 - £150.00



Lot: 546
 Approx 100 Pieces of Goss Crested Ware.
 Estimate: £30.00 - £40.00



Lot: 535A
 Moorcroft "Ivory Bells" Vase. Designer Philip Gibson. Shape 87/6". . Boxed.
 Estimate: £140.00 - £160.00



Lot: 553
 Art Deco Hand Painted Biscuit Pot, in the form of a cottage.
 Estimate: £10.00 - £20.00



Lot: 536A
 Moorcroft Lamp with Matching Silk Shade. "Entwined" design by Emma Bosson. Shape 3/8. New and unused. Moorcroft RRP Â£633. Label attached.
 Estimate: £290.00 - £330.00



Lot: 595
 Moorcroft Collection of Speckled Powder Blue Tableware c 1930. Includes Rare shaped sandwich plate teapot, milk jug and sugar bowl, 5 cups and 4 saucers and 4 side plates. 17 pieces in total. Excellent condition all pieces.
 Estimate: £260.00 - £300.00



Lot: 537
 Moorcroft "Savannah". Designer Emma Bossons. Shape 120/9". Limited edition No. 27/500. Boxed.
 Estimate: £180.00 - £220.00



Lot: 596
 Alexandra Porcelain Works Royal Vienna Jardiniere, (Ernst Wahlliss), Painted With Trees And Birds in flight, Secessionist Style Moulded Border Of Stylised Spider Webs Between Enamelled Porcelain Cabochons, Lustre Edge. Diameter 11 Inches,

Printed Mark To Base And
Incised Number 9232
Estimate: £180.00 - £220.00



Lot: 604A
Collection of Blue Wedgwood
Jasperware, comprising
Millenium mantle clock, trinket
pot, two ashtrays and a squat
vase.
Estimate: £15.00 - £30.00



Lot: 638A
Spode Tureen and Cruet, with
Chinese ginger jug and
commemorative ware.
Estimate: £20.00 - £30.00



Lot: 617A
Early 20th Century Dressing
Table Set, comprising
candlestick, scent bottle, powder
pot, trinket pot and tray, all
decorated with floral foliage on a
pink ground, stamped to bases
'CFH', 'CDM', (5).
Estimate: £30.00 - £40.00



Lot: 640A
Gustavberg Swedish Elongated
Stylised Pig Figural Candle
Holder, 13 inches long together
with a Tilgmans studio pottery
jug, (2).
Estimate: £20.00 - £40.00



Lot: 634A
Collection of Five Cat Figures,
comprising three stylized
siamese cat figures and two in a
deep teal colour, together with
one rabbit.
Estimate: £10.00 - £20.00



Lot: 642A
Collection of Ceramics,
comprising Bavarian schumann
Aezberg dessert set, with six
bowls and one large bowl.
Estimate: £30.00 - £40.00



Lot: 635A
Small Dresden Vase, together
with a Crescent ewer, with gilt
and painted decoration, depicting
roses, (2).
Estimate: £30.00 - £40.00



Lot: 645A
Royal Grafton 'Majestic' Tea
Service, all decorated with red
and gold edging.
Estimate: £20.00 - £30.00



Lot: 636A
Box Containing a Collection of
Crested Ware, including a good
collection of Gossware, one in
the form of the statue of the
lifeboat monument in St. Annes,
one in the form of a rabbit,
entitled 'Isn't this rabbit a duck', a
figure of Florence Nightengale,
approximately 60 in total.
Estimate: £40.00 - £60.00



Lot: 648A
Minton 'Haddon Hall' Collection
of Ceramics, comprising two
mugs, two plates, six small
bowls, sugar pot, pin dish, large
bowl, circular dish.
Estimate: £20.00 - £30.00



Lot: 657A

Small Quantity of Ceramics, comprising a collection of Wedgwood 'Hathaway Rose' trinkets, all on a Coalport dish, together with a jardiniere and two small 19th century jugs.
Estimate: £20.00 - £30.00



Lot: 665

Box of Assorted Glassware, including bowls, serving dishes, cake stand and entree dishes.
Estimate: £20.00 - £40.00



Lot: 659

Spode 'Arundel' Design Part Teaset (40) pieces approximately including cups, saucers, two sandwich/cake plates, etc
Estimate: £30.00 - £40.00



Lot: 667A

Green Onyx Fruit Comport, 4.5 inches high x 9.5 in diameter
Estimate: £10.00 - £20.00



Lot: 661

Matched Pair of Dresden Figures in 18th century style dress, with lace trim, the lady on a heart shaped base, the gallant on a rococo style base; approx. 6.75 inches high(2)
Estimate: £20.00 - £40.00



Lot: 670A

Collection of Glassware, comprising four cut glass Champagne glasses and a set of four sandae dishes, raised on stems.
Estimate: £10.00 - £20.00



Lot: 663

Royal Albert 'Moss Rose' Part Tea Set comprising 6 cups, saucers and side plates (18) in total. Together with a wicker basket.
Estimate: £15.00 - £30.00



Lot: 674A

Collection of Glassware, comprising decanter six tumblers, six sherry glasses, some with star cut bases, (19).
Estimate: £20.00 - £40.00



Lot: 663A

Paragon Tea for Two Set, over-painted on print, depicting flowers on a green ground, comprising 2 cups, 2 saucers, sugar bowl, teapot, jug and side plate.
Estimate: £10.00 - £20.00



Lot: 680A

Collection of Glassware, including jug, lidded jar and a small collection of drinking glasses.
Estimate: £20.00 - £30.00



Lot: 664

Wedgwood Coffee Service 'Hathaway Rose' (15) pieces comprising coffee pot, 6 cups, saucers, sugar bowl and milk jug.
Estimate: £20.00 - £30.00



Lot: 682A

Two Pieces of Swedish Glass, comprising paper weight, signed 'Capedoni, Canada', together with a cylindrical vase.
Estimate: £30.00 - £40.00



Lot: 693A

A Rare Art Deco Sabino Opalescent Shell Form Art Glass Vase. The vase has cone shaped stylized shells decorating the entire outside of the body. The vase is in perfect condition. It is engraved to the base 'Sabino'. Paris. 8" in height. Circa 1920/30's.
Estimate: £600.00 - £800.00



Lot: 685A

Box of Various Engraved Glasses, of various shapes and sizes, together a claret jug.
Estimate: £15.00 - £20.00



Lot: 694A

Nailsea Walking Stick, with spiral twist decoration, together with a ruby glass basket.
Estimate: £30.00 - £50.00



Lot: 691A

Collection of Six Tall Stem Glasses, together with a set of five matching tumblers and a jug, wine glasses with faceted borders, etched rims to tops, (12).
Estimate: £20.00 - £40.00



Lot: 695A

A French Art Deco Vasiline Frosted Glass Dish, decorated with 3 flower heads to the base. Signed raised moulded mark 'Verlys, France. Circa 1930's 12." Diameter: 11"
Estimate: £80.00 - £120.00



Lot: 692A

Large Tiffany Style Pendant Lamp Shade, each piece of the colourful glass with it's own frame of lead, then the whole soldered together to form a substantial, solidly made shade, the centre with a selection of fire opal reds and oranges, approximately 7.5 inches in diameter, framed with a single row of black squares, then a double row of randomly shaped opalescent pieces, followed by a deep band comprising three red Lancaster roses, alternating with three purple daisies linked together by two rows of the black squares and randomly shaped green pieces, the spaces between this band and the rim filled with further opalescent pieces, and the rim itself a band of smoky quartz colour rectangles alternating with smaller, vertical yellow rectangles; three squared hooks soldered above the red roses hold the associated hanging chains and brass rose; 16.5 inches in diameter; 2nd half 20thC
Estimate: £100.00 - £150.00



Lot: 698A

Kosta Fine Polar Bear Frosted & Clear Glass Large Paperweight. Etched to the base 'Kosta, 93153 M.J'. 5.25x8".
Estimate: £60.00 - £80.00



Lot: 701

Cut Glass Ships Decanter and a further cut glass regular wine decanter, both with stoppers, (2).
Estimate: £20.00 - £30.00



Lot: 702A

Seven Pieces of Various Ruby Glass, mainly Victorian.
Estimate: £20.00 - £30.00



Lot: 711
 Walther & Sohne Art - Deco
 Pressed Moulded Glass. Lamp
 base in the form of a semi-nude
 lady. c.1930's. Stands 9.25
 inches high.
 Estimate: £100.00 - £150.00



Lot: 743A
 Japanese, Extremely Fine, Meiji
 Period, Squat Bottle Vase, with
 superb, intricate, hand gilded
 decoration on cobalt blue
 background, to the neck,
 shoulders and body panels,
 together with two handled
 painted polychrome, scenic
 panels, with mother and son on
 one and a lakeside scene on the
 other, to the base, it is signed
 'Ryozan' in gold. This really is a
 specimen piece in perfect
 condition, it is 15.5 cm high and 9
 cms in width.
 Estimate: £300.00 - £400.00



Lot: 720A
 Box Containing a Collection of
 Assorted Glassware, mainly 20th
 century.
 Estimate: £10.00 - £20.00



Lot: 721A
 A Fine Quality Overlay Green
 Vase, the body gilded with
 decorative Grecian key patterns,
 the central oval panel finely
 decorated with a young shepherd
 sitting on a rock surveying the
 distant village. French 1860's, 13
 high.
 Estimate: £80.00 - £120.00



Lot: 744A
 Chinese 18th Century Kangxi
 Period Chinese Imari Dish,
 decorated with a classical floral
 design in iron red, blue & gold.
 To the reverse, two blue floral
 branches, unmarked, but with the
 distinctive cafe-au-lait painted
 rim. It is 20cms in diameter, in
 very good condition, one small
 rim frit, slight wear to the over-
 glaze gold, with kiln firing sand
 adhering to the base rim. Of the
 period 1662-1722.
 Estimate: £150.00 - £200.00



Lot: 724A
 Set of Six Cut Glass Wine
 Glasses, with knopped stems,
 together with a further set of six
 cut glass beakers, (12).
 Estimate: £20.00 - £40.00



Lot: 747A
 Small Japanese 'Peacock' Vase,
 beautifully hand decorated with a
 single peacock on a rock against
 a background of a flowering
 shrub and a rich red acer tree,
 formal borders to rim and base,
 all highlighted in gold outline. It is
 12.5 cms high, marked to the
 base with the Shimazu family
 crest, c 1890-1910, in excellent
 condition, with the gilding
 showing little wear.
 Estimate: £90.00 - £120.00



Lot: 737A
 Waterford Crystal Fine Set Of Six
 Champagne Drinking Glasses.
 Never used, good condition,
 boxed. Each 7.25" tall.
 Estimate: £40.00 - £60.00



Lot: 748A
 Japanese Late 19th Century Salt
 Glazed Stoneware Sake Bottle of
 Tapered Ovoid Form, with
 cylindrical neck and rolled lip,
 decorated in white slip, showing
 the name/brand of the
 manufacturer. It is 26.5cms high
 and 13cm wide, in very good
 overall condition, base has small
 drilled hole for lamp fitment.
 Estimate: £80.00 - £100.00



Lot: 738A
 Waterford Crystal Fine Set Of Six
 Holy Drinking Glasses, 'Iismore'
 design. Each 7.5" tall. Good
 condition, never used, boxed.
 Estimate: £40.00 - £60.00



Lot: 748B

Late 19th Century Pair of Japanese Cloisonne Enamel Vases. Floral and bird decoration on blue ground. Each vase 12 inches in height.
Estimate: £60.00 - £80.00



Lot: 754A

Very Fine Pair of Chinese Blue and White Floor Vases of Large Size 28 inches High. Decorated in underglaze blue with small boys playing in a garden setting, with figures of a Mandarin with his consorts. With bridges and bamboo trees in the distance. Small dogs of Foo to the neck for handles. French Ormolu mounts to the top of vase and base.
18/19th Century.
Estimate: £3,000.00 - £5,000.00



Lot: 750A

A Very Fine Set Of 3 Persian (Qajar) Moulded Wall Tiles Of Large Size & Rectangular Form with moulded decorations painted in Blue, Turquoise, Black & Greens over a white ivory ground, depicting mounted Princes with falcons. Attired in regal garbes on magnificent white steeds, beneath a raised decorated border. 13.5x10.5 inches. 18/19th Century.
Estimate: £3,000.00 - £4,000.00



Lot: 754B

An Outstanding, Meiji Period, Japanese Satsuma Lidded Koro, of the highest quality, the body of globular form, raised on three stub feet with an everted rim and angular slab handles, the domed cover pierced and surmounted by a knob in the form of a Karako. The whole is profusely and very finely decorated in overglaze enamels, piped slip and gilding, with panels of Rakkan or Buddhist Acolytes, even featuring an immortal on the back of a flying goose, all on honeycomb diaper background. It is 28 cms high, in perfect condition and the interior of the cover bears the character inscription of 'Dai Nihon Satsuma Tetsuye Sei Tosen Ga'. It is a special piece and you need time and a magnifying glass to see the full extent of the intricate hand decoration.
Estimate: £650.00 - £700.00



Lot: 751A

An Extremely Fine Quality Japanese Kyoto School Pottery Millefleur '1000 Flowers' Design Vase of unusual rare & stylistic form compressed slender diamond shape. Decorated in all over hand painted flowers with gilt highlights. Japanese character mark to the base. Meiji period. 19th Century. On a carved wood base and lid. 12" in height excluding base.
Estimate: £600.00 - £800.00



Lot: 752A

Chinese Ming Dynasty Pair of Foo Dogs, 17th/18th Century, each with mouth agape and baring teeth, seated on cloth covered, rectangular plinths, both lions are decorated in Sancai glazes of white amber and green, each with bells on the collar, they are 27 cms in height, in overall good condition with some normal age losses/wear to the glaze. This is a fine pair of original, old Ming, Foo dogs of the period.
Estimate: £1,200.00 - £1,500.00



Lot: 755A

Chinese, Porcelain Vase, with an attractive scene of two exotic birds, perched beneath a flowering Prunus tree against a floral background, with black Chinese character writing to the reverse, possibly a poem, with 'Qianlong' mark to the base, but is probably early-mid 20th Century republic period. It is 22.5cms high & 14cm in width, in first class condition.
Estimate: £50.00 - £60.00



Lot: 755B

A Good Quality Satsuma Vase decorated to one side with Japanese Courtesans in a garden setting, the reverse side decorated with exotic birds on a river bank. The blue body highlighted with gilt flowers. c 1890/21900. 13.5 inches in height.

Estimate: £80.00 - £100.00

Estimate: £600.00 - £800.00



Lot: 761A

Squat Handmade Terracotta Bowl with Applied Decorative Lizard, possibly early Chinese or Korean, it is 20cms in width and 15cms high, unmarked to the base. It is in overall good condition, no cracks, one or two small surface chips.

Estimate: £50.00 - £60.00



Lot: 756A

A Pair Of Small Crackle Ware Chinese Vases, decorated with warring figures on a horseback. Circa 1900, height 9"

Estimate: £20.00 - £30.00



Lot: 761B

Cantonese - 19th Century Set of Six Enamel Miniature Saki Export Cups. c.1820-40. Decorated with continual Village Scene, with figures and bridges to the body.

Estimate: £120.00 - £150.00



Lot: 757A

A Fine Quality Chinese Famile Verte Vase, painted in green and red enamels, depicting a Chinese lady in her carriage attended by courtesan and a mandarin on horseback with grooms. Marked to the base with a red leaf design. 18th/19th Century. 11.5" High.

Estimate: £200.00 - £250.00



Lot: 762A

A Pair Of Small Chinese Cloisonne Lidded Jars, of globular form. Decorated in turquoise enamels with floral decoration. 5" in height on small hardwood stands, circa 1900.

Estimate: £40.00 - £60.00



Lot: 759A

A Pair Of Chinese Blue And White Lidded Vases Of Balastor Shape. Decorated in underglaze blue with insects and birds amongst foliage, with matching lids. Chinese character marks to the base underglaze. 18th/19th Century. 9.5" high.

Estimate: £200.00 - £300.00



Lot: 764A

An Unusual Cantonese Celadon Ground Decorated Vase. The body decorated in famille rose pallet with butterflies amongst flowers and birds, decorated on one side of the vase in underglaze blue and highlighted in gilt work depicting birds amongst flowers, small gilded kyilns to the neck of the vase. Circa 1840. 13" in height.

Estimate: £300.00 - £350.00



Lot: 760A

A Very Unusual Large Japanese Natural Wood Ground Box, possibly Keyaki wood, of the finest quality carving. Depicting on four sides horses in various pursuits and movements. The lid of the box is carved with a peacock with outstretched wings. The outer edges of the lid are lacquered in black with signs of gilding. The interior of the box is black lacquered throughout to interior of the box. 18/19th Century. Edo period. Unsigned. 9.5" in height, 11.25" in width, 9.25" in depth.



Lot: 765A

A Fine Japanese, Meiji Period, Satsuma Vase of Ovoid Form, resting on a spread foot and rising to a waisted, cylindrical neck with everted mouth, with applied stylised bird handles. It is finely decorated, in deep cobalt blue, with scattered, gilt, Paulownia fronds, which also happen to be the Mons of the Tokugawa Family. To each side there is an oval panel with two scenes -one of Buins in a garden

setting and the other with a group of people, including a Samurai and children in a riverscape with mountains and trees. This a top quality piece, 17.5 cms high and in perfect condition, signed to the base with a two character signature, 'Sukezan' in gold. Estimate: £450.00 - £800.00



Lot: 768A

Late Nineteenth Century, Very Large, Japanese Satsuma Vase of Inverted Baluster Hexagonal Form, hand decorated with massed chrysanthemums and peonies, against a vertical ribbed ground, the whole thing being interspersed with 14 portraits of famous poets each with an extract from one of their poems, all in overglaze enamels and rich gilding, signed to the base 'Satsuma' with the Shimazu Mon. It is 43 cms high, in very good condition, with a little age wear to some of the overglaze gilding. Estimate: £250.00 - £280.00



scene of five ladies of the court around a supper table of a large fish dish, three playing instruments - flute, mandolin and a drum, one with a fan and one dancing to the music - a sixth lady watching from the doorway. It is 31.5cms by 23.5cms and in good condition, with the usual age wear associated with genuine antique decorated Papier Mache trays. Estimate: £100.00 - £120.00

Lot: 781

Cantonese Famille Rose Single Handed Dish of lily leaf shape, the main decoration showing a group of Chinese ladies being entertained in a garden and under a verandah by a musician playing a guzheng, the scene being framed by a band of prolific polychrome bird and floral decoration, with further, slightly larger scale floral painting to the shaped, wide handle, the whole vividly hand painted and highlighted in gilt; approximately 9.25 inches x 10.5; late 19thC Estimate: £120.00 - £160.00



Lot: 772A

Unusual Chinese Large Rounded Lidded Box which appears to be constructed of wood, covered in red leather or leather type material, with a gilded design on both sides, internally covered in pasted Chinese documents. It is possible it could be some form of collecting box, for use say in a temple. It is 51cms in width, 56cms in height and 10.5cms in depth. In good condition, with some light scratching in places. Estimate: £40.00 - £60.00



Lot: 785A

Chinese Late 19th/Early 20th Century Lacquered Hinge Lidded Black Box with a most interesting gilded decoration of an emperor in his palace with his attendants, all being entertained by a magician and his assistant. On the floor is a box from which a number of white mice are emerging, scene from some Chinese fable. It is 15x17.5x11cms. , in good condition, but with the normal fade/wear associated with the old lacquered/gilded boxes. Estimate: £120.00 - £150.00



Lot: 778A

Chinese Brass Temple Bell and Gong, with dragon motif to brass bell, enclosed in a carved cherrywood frame, carved with Chinese dragons, the frame intertwined to top with Chinese house scene, circa 1900, 16 inches high. Estimate: £40.00 - £60.00



Lot: 780A

A Very Attractive Quality Chinese Papier Mache / Lacquered Black Tray, late 19th century/early 20th century. Superbly hand decorated with a garden terrace



Lot: 792A

Three Japanese Lacquered Panels, depicting rural scenes with figures, fitted with wooden frames, the largest measuring 36 inches high and 28 wide. Estimate: £80.00 - £120.00