

Architect: David Baker Architects. Structural engineer: Structural Design Engineers. Photo: Bruce Damonte.

The Drs. Julian and Raye Richardson Apartments in San Francisco includes four stories of wood-frame construction over one story of concrete.



# Fire Protection in Wood Buildings

Expanding the possibilities of wood design

Sponsored by reThink Wood, the American Wood Council and U.S. WoodWorks | By Jeffrey B. Stone, Ph.D.  
Based on the *Code Conforming Wood Design Series* by the American Wood Council and International Code Council

**W**ood construction offers economic, performance and environmental advantages not typically found with other structural materials. Wood is cost effective, versatile and adaptable. It's renewable and has a light carbon footprint. It also has a proven record for safety, evidenced by its use not only in 90 percent of all U.S. home construction but in some of today's most innovative non-residential architecture.

In terms of fire protection, building codes require all buildings to perform to the same level of safety regardless of materials. Wood buildings can be designed to meet rigorous standards for performance, which is why the *International Building Code (IBC)* allows the use of wood in a wide range of building types—including structures that are taller and have more area than some designers realize.

This CEU provides an overview of fire protection in wood buildings with a focus on compliance with the 2009 IBC, and is based on the *Code Conforming Wood Design Series* developed by the American Wood Council (AWC) and the International Code Council. Building fire safety incorporates a

combination of passive and active features. A passive fire safety feature may limit the height and area of the building, prescribe the use of fire-rated building elements or provide for adequate means of egress. Active fire safety features are those such as automatic fire detection or suppression systems that provide occupant notification, alarm transmittance and the ability to suppress fire growth until the fire service arrives. Codes are relying increasingly on active systems, since, with proper maintenance and alarm supervision, they have a high degree of reliability. This CEU covers the fundamentals of passive and active fire protection. It includes a summary of allowable wood use in buildings in accordance with the 2009 IBC, emphasizing the design flexibilities permitted for wood in non-residential and multifamily construction.

## PASSIVE FIRE PROTECTION

Passive fire protection is an integral component of building safety. Components and systems are intended to contain fires or slow the spread of fires through the use of fire-resistant building elements and open space.

## CONTINUING EDUCATION



**EARN ONE AIA/CES HSW  
LEARNING UNIT (LU)**



**EARN ONE GBCI CE HOUR FOR LEED  
CREDENTIAL MAINTENANCE**

### Learning Objectives

After reading this article, you should be able to:

1. Analyze fire protection in wood buildings in terms of compliance with the 2009 *International Building Code (IBC)*.
2. Discuss the fundamentals of passive and active fire protection.
3. Determine allowable wood use in buildings in accordance with the 2009 IBC.
4. Describe provisions in the IBC for increasing the height and area of wood buildings beyond the base tabular amounts.
5. Identify and select tested fire-rated wood-frame assemblies or, to use non-listed assemblies, calculate the fire endurance of load bearing and non-load bearing wood assemblies using the Component Additive Method (CAM).

To receive credit, you are required to read the entire article and pass the test. Go to [ce.enr.com](http://ce.enr.com) for complete text and to take the test for free.

AIA/CES COURSE #K1306T  
GBCI COURSE #0090009863

## CODE HISTORY

The IBC was introduced in 2000, consolidating three regional model building codes into one uniform code that has since been adopted by most jurisdictions. This consolidation increased the possibilities for wood construction by recognizing fire protection systems and techniques that had a demonstrated history of fire safety in one of the legacy codes. Subsequent versions of the IBC have expanded the opportunities for wood use even further through the application of additional state-of-the-art fire protection features.

The IBC is intended to protect public health, safety and general welfare as related to the construction and occupancy of buildings and structures. To this end, it requires all building systems to perform to the same level of safety regardless of the building material used.

Occupancy classification or use of a building plays a key role in the organization and prescription of appropriate fire protection measures. Throughout the IBC, occupancy group classifications are fundamental in determining the necessary features of construction and occupant safety, including limitations to building geometry, means of egress, fire protection and interior finishes.

For example, regulation of the size of structures is based on specific hazards associated with the occupancy as well as the characteristics of construction materials used.

IBC Table 503 provides basic per-story maximum floor areas reflecting the accepted level of hazard for buildings and occupants related to height and size of the structure. However, these tabular values can be increased through the presence of passive and active fire protection systems.

## STRUCTURAL FRAME

Although the combustibility of building materials is important in determining levels of safety, the expected response that a building will have in a fire condition is vital to determining equivalent risk, which is fundamental to the IBC. The code classifies structures by type of construction in an effort to account for the expected response that building elements will have in a fire. The IBC defines five main types of construction: Types I, II, III, IV and V. For each, it specifies the materials permitted and minimum fire-resistance ratings associated with the various structural members.

- ▶ Types I and II construction must only have noncombustible building elements, except as permitted in Section 603.
- ▶ Type III construction must have noncombustible or fire-retardant-treated

wood (FRTW) exterior walls, while combustible or noncombustible materials may be used for interior elements.

- ▶ Type IV, often called Heavy Timber (HT) construction, has exterior walls made of noncombustible materials or FRTW and interior building elements made of solid or laminated timber without concealed spaces.
- ▶ Type V construction allows the use of both noncombustible and combustible materials in structural elements and exterior and interior walls.

Types I, II, III and V construction are further subdivided into two categories (IA and IB, IIA and IIB, IIIA and IIIB, and VA and VB) with the difference being the degree of fire resistance required for various building elements and assemblies. For example, in Type VA construction, all interior and exterior load-bearing walls, floors, roofs and structural members are required to have a minimum 1-hour fire-resistance rating. In Type VB construction, no fire-resistance rating is required.

## ESTABLISHING FIRE RESISTANCE

Table 601 of the IBC shows the required fire resistance of building elements (structural frame, walls, floors and roofs) for each construction type. Ratings are given in hours. The exception is Type IV, where the wood structural elements are assumed to have inherent fire resistance due to their required minimum dimensions (no fire resistance rating is necessary except for exterior walls). Required fire resistance is based on the expected intensity of a fire that originates within the building as a result of its fire load and the level of risk associated with the size of the building and its occupancy.

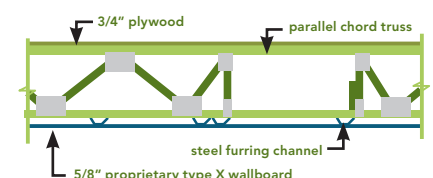
Fire resistance describes the rate at which a building material or assembly degrades due to a fire. Resistance is based on how rapidly the strength of the member or assembly is affected by the fire and whether the member or assembly can maintain its design strength while preventing the passage of heat or flames. Fire resistance of wood members and assemblies may be established by any one of five means listed in IBC Section 703.3. The most common methods—tested assemblies and calculated fire resistance—are discussed in the following pages.

Architect: JSSH Architects, Inc. Structural engineer: Blanchard Engineering. Photo: JSSH Architects, Inc.

Applewood Point of Langton Lake, a senior housing project in Minnesota, counts among its features stairwells designed with double sheet-rocked wood-frame walls and 2-hour fire ratings to serve as areas of refuge.



### EXAMPLE OF TESTED 1-HOUR FLOOR/CEILING ASSEMBLY



Courtesy: The American Wood Council



Architect: Togawa Smith Martin, Inc. Structural engineer: Englekirk Structural Engineers, Inc. Photo: Michelle Kam-Biron.



Americana at Brand in Glendale, California, is a Type III building. It includes five stories of wood-frame construction over a concrete podium and one level of subterranean parking.



Photo: FPInnovations

## CHAR

Wood products such as the large beams used in heavy timber construction and cross laminated timber (CLT) may perform better in a fire situation than noncombustible materials. Because these products are thick and solid, they char on the outside at a slow and predictable rate while retaining strength, slowing combustion and allowing time to evacuate the building. The char protects the wood from further degradation, helping to maintain the building's structural integrity and reducing its fuel contribution to the fire, which in turn lessens the fire's heat and flame propagation. Section 602.4 of the 2009 IBC has prescriptive provisions for wood members which meet the definition of heavy timber.

## TESTED ASSEMBLIES

Code recognition of 1- and 2-hour wood-frame walls, floors, ceilings and roofs are predicated on successful fire and hose stream testing conducted in accordance with ASTM E119, *Standard Test Methods for Fire Tests of Building Construction Materials* or UL 263, *Standard for Fire Tests of Building Construction and Materials*.

Depending on the application, building elements may need to be fire-rated from one side or both sides. For specific exterior wall applications where there is adequate fire distance separation from adjacent structures or the property line, the IBC allows wood-frame walls to be tested for exposure to fire from the inside only. Rating for both interior and exterior fire exposure is only required when the wall has a fire separation distance of less than 10 feet. For floors, ceilings and roofs, resistance to fire exposure is measured from below.

For a detail of a 2-hour exterior wall assembly, see page 8.

## CALCULATED FIRE RESISTANCE

The fire resistance of exposed wood members may be calculated using the provisions of Chapter 16 of the *National Design Specification® (NDS®) for Wood Construction* (see IBC Section 721.1). AWC's Technical Report No. 10 (TR10), *Calculating the Fire Resistance of Exposed Wood Members*, contains full details of

the NDS method as well as design examples. Although IBC Section 721.6.3 also contains an acceptable calculation method, it is limited to 1-hour fire resistance. This provision has been deleted in the 2015 edition of the IBC, since the NDS Chapter 16 method has broader application and provides a more reliable calculation procedure.

## DESIGN TOOLS FOR ASSEMBLIES

Many sources are available for identification and selection of tested fire-rated assemblies. Generally, publications from recognized testing laboratories are the source for listings. Fire-rated wood-frame assemblies can be found in listings contained in such publications as:

- ▶ Underwriters Laboratories (UL) *Fire Resistance Directory*
- ▶ Intertek Testing Services' *Directory of Listed Products*
- ▶ Gypsum Association's *Fire Resistance Design Manual*

Fire-rated assemblies may also be selected from one of the prescriptive assemblies provided in IBC Section 720 based on ASTM E 119 or UL 263 test results, or by calculating an assembly's capacity using IBC Section 721. The AWC publication *AWC Design for Code Acceptance (DCA) 3 – Fire-Rated Wood Floor and Wall Assemblies* is also helpful in determining the fire rating of wood-frame wall and floor/ceiling/

roof assemblies, and is available for free at [www.awc.org/codes/dcaindex.html](http://www.awc.org/codes/dcaindex.html).

To permit use of “non-listed” assemblies, IBC Section 721.6 also recognizes a methodology for calculating the fire endurance of load bearing and non-load bearing wood assemblies (floor, wall, ceiling and roof assemblies) through a calculation methodology called Component Additive Method (CAM). CAM was developed in the early 1960s by the Fire Test Board of the National Research Council of Canada and validated through full-scale wood-framed assembly fire tests.

- CAM calculates fire endurance to equal the sum of:
- ▶ the contribution of the fire exposed membrane,
  - ▶ the time to failure of the framing members, and, if applicable,
  - ▶ additional protection due to the use of cavity insulation or reinforcement of the membrane.
- Section 721.6 contains the procedures by

which fire-resistance ratings of wood assemblies can be established using this calculation method. AWC’s publication *DCA 4 – Component Additive Method (CAM) for Calculating and Demonstrating Assembly Fire Endurance* provides a history of the method and an in-depth explanation of its use and application.

EXTERIOR WOOD-FRAME WALLS

Wood stud framing is permitted for all load bearing and non-load bearing exterior walls in Type V construction. In Type III and IV buildings, exterior walls may be FRTW in compliance with IBC Section 2303.2 when the exterior wall assembly is required to have a 2-hour rating or less. The required rating of exterior walls in Type III and IV buildings is predicated on fire separation distances contained in Table 602, so care must be taken when using this alternative to the general requirement for noncombustible material.

INTERIOR WOOD-FRAME WALLS AND PARTITIONS

In Types I and II construction, interior partitions dividing single tenant offices or retail and not creating corridors serving 30 or more occupants are permitted to be FRTW, 1-hour fire-resistance-rated construction, or wood panels or similar light construction up to 6 feet in height. In Types III and V construction, interior building elements may be wood. In Type IV construction, however, wood-stud-framed partitions must be 1-hour fire-resistance-rated construction or solid wood formed by at least two layers of 1-inch matched boards or 4-inch-thick laminated construction.

ROOFS AND ROOFTOP STRUCTURES

In Type I and II construction, FRTW framing in roofs is permitted when certain conditions are met. FRTW framing can be used in roof elements in Type II construction of any height and in Type I construction of any height provided the vertical distance between the roof and floor below is at least 20 feet. Heavy timber is allowed in any construction where a 1-hour or less fire-resistance rating is required.



SEPARATIONS AND OPENINGS

Exterior openings are generally required to be protected with a rated opening protective assembly when the exterior wall is within relatively close proximity (< 30 feet) to the property line. IBC Tables 601 and 602 determine when the exterior walls are required to be rated and Table 705.8 defines the allowable percentages of protected and unprotected openings in those walls.

Unlimited amounts of unprotected openings are permitted by Table 705.8 provided the exterior walls are 30 feet or more from the property line, or 10 feet or more in a Type IIB or VB building. No unprotected openings are permitted in the exterior wall within 5 feet of the property line for nonsprinklered buildings and no openings are permitted if the wall is closer than 3 feet from the property line.

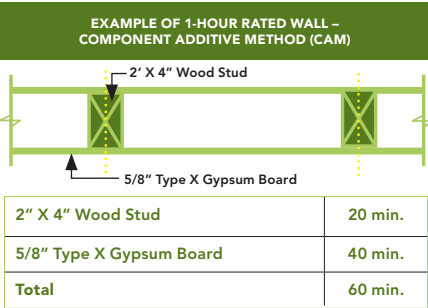
Bay and oriel windows must conform to the type of construction required for the building; however, FRTW is permitted for Type I, II, III and IV buildings not more than three stories above grade plane. Untreated wood may be used in Type V buildings (IBC Section 1406.4).

Interior wood doors are required to be protected when the wall assembly they are in requires a fire-resistance rating, such as exit enclosures or exit access corridor walls. The minimum required fire protection rating of the fire door is given in IBC Table 715.4 and ranges from 20 minutes to 3 hours based on the required fire-resistance rating of the wall assembly.

Photo: FPInnovations

## CROSS LAMINATED TIMBER

A successful ASTM E119 fire endurance test of a cross laminated timber (CLT) wall was key to the decision to recognize CLT in the 2015 edition of the IBC. The wall, a 5-ply CLT specimen approximately 7 inches thick, was covered on each side with a single layer of 5/8-inch Type X gypsum wallboard. The wall was loaded to the maximum attainable by the test equipment, although it remained significantly below the full design strength of the CLT. It was then exposed to a standard fire that reached over 1,800 degrees Fahrenheit in the first 90 minutes of exposure. While only seeking a 2-hour rating as required by building code provisions, the test specimen lasted 3 hours 6 minutes.



Courtesy: The American Wood Council



Architect: LARGE Architecture. Structural engineer: Western Wood Structures, Inc. Photo: Western Wood Structures, Inc.



The LeMay Auto Museum in Tacoma, Washington, includes a Type IV heavy timber roof.

Architect: EHDD. Structural engineer: Tipping Mar Structural. Photo: Jeremy Bittermann.



At the David & Lucile Packard Foundation company headquarters, wood was an important part of the strategy to achieve LEED Platinum certification.

## FIRE WALLS

Ideally, fire growth and fire spread will be contained to the building of origin and any adjacent buildings will be protected against fire exposure. A fire wall, as defined in the IBC, is commonly used to divide a structure into separate buildings or to separate a new addition from the existing portion of a structure. Each portion of a building separated by one fire wall or more is considered a separate structure. Generally, fire walls must be of approved noncombustible materials, but may be wood-frame in Type V construction.

By definition: “A fire wall is a fire-resistance-rated wall having protected openings, which restricts the spread of fire and extends continuously from the foundation to or through the roof, with sufficient structural stability under fire conditions to allow collapse of construction on either side without collapse of the wall.” A fire wall is not required to be cantilevered and remain in place if construction on both sides of it collapses. Fire walls must extend to the outer edge of horizontal projecting elements, such as balconies and roof overhangs.

Chapter 7 identifies acceptable techniques and

methods by which construction can be evaluated to determine fire performance requirements, including fire walls. In addition, *NFPA 221: Standard for High Challenge Fire Walls, Fire Walls, and Fire Barrier Walls* specifies requirements for the design and construction of high challenge fire walls, fire walls and fire barrier walls including protection of openings and penetrations.

## EXTERIOR WALL FINISH

Wood veneer is permitted on Type I, II, III or IV buildings up to 40 feet above grade—60 feet if FRTW is used, provided the veneer is 1-inch nominal thickness, 7/16-inch exterior hardboard siding or 3/8-inch exterior-type wood structural panels or particleboard. Open or spaced veneers without concealed spaces are not permitted to project more than 24 inches from the building wall (IBC Section 1405.5).

## INTERIOR FINISH

Wood and wood-based products are widely used in interior wall, ceiling and floor surfaces in all types of buildings. Appearance, acoustical qualities and interior design versatility have made wood surfaces highly desired. In general, wood materials may be used as interior finish within almost all occupancies.

IBC Table 803.9 places minimum finish performance classifications on finish materials based on their location within the building. They are expressed in terms of flame spread index numbers. These values are determined in a standard fire test which evaluates the surface burning characteristics of a material. Different maximum flame spread indices are permitted depending on building occupancy, location of the material in the building, and the presence of sprinklers—Class A (flame spread index 0-25); Class B (26-75); or Class C (76-200). The standard fire test used to evaluate flame spread characteristics of wood building materials is ASTM E-84, *Standard Test Method for Surface Burning Characteristics of Building Materials*. Nonsprinklered buildings typically require lower flame-spread materials than sprinklered buildings.

Tested wood products typically have a flame spread index of less than 200, making them acceptable under the IBC for a wide range of interior finish uses. Most wood species qualify as Class C, while some, such as cedar, western hemlock, Idaho white pine, redwood and spruce, can qualify as Class B. Flame spread indices for a range of proprietary wood-based interior finish materials are available from manufacturers. Commercially available fire-retardant treatments for wood and panel products can reduce flame spread performance to an index of 25 or less, meeting Class A requirements.

Nonsprinklered Buildings Minimum Interior Finish Classification by Occupancy <sup>a</sup>			
Location	Minimum Interior Finish Classification		
	A <sup>b</sup>	B	C
Exit enclosures and exit passageways <sup>c</sup>	A, B, E, I, M R-1, R-4,	F, S, R-2	R-3
Corridors	A <sup>d</sup> , I-2, I-3, I-4	B, E, M, S, I-1, R-1, R-2, R-4	F, R-3
Enclosed spaces and rooms		I, A-1, A-2, R-4	A-3, A-4, A-5, B, E, F, M, S, R-1, R-2, R-3
<div><div><div><sup>a</sup> This simplified table is not comprehensive; more exceptions can be found in IBC Table 803.9 footnotes.</div><div><sup>b</sup> Buildings less than three stories above grade plane permit the reduction of the exit enclosure and exit passageway classifications to Class B.</div></div><div><div><sup>c</sup> Exit enclosures and exit passageways are permitted to use Class C wainscoting or paneling in the grade lobby for not more than 1,000 square feet of applied surface when applied to a noncombustible base.</div><div><sup>d</sup> Lobby areas in corridors may use Class B interior finishes for Group A occupancies.</div></div></div>			

for more than 25% of the building perimeter, may increase the allowable floor area using IBC Equation 5-2 (see below).

$$I_f = [ F / P - 0.25 ] W / 30$$

Where:

$I_f$  = Area increase due to frontage

$F$  = Building perimeter that fronts on a public way or open space having 20 feet open minimum width (feet)

$P$  = Perimeter of entire building (feet)

$W$  = Width of public way or open space (feet) in accordance with Section 506.2.1

A weighted average may be used when  $W$  varies along the perimeter.  $W$  is the open space width plus the width of the public way.

It should be noted that frontage widths ( $W$ ) greater than 30 feet will only receive credit for a value of 30 feet. The maximum increase that can be obtained for frontage would occur when 100% of the perimeter has frontage of 30 feet or more and would result in a 75% floor area increase. The figure below illustrates the frontage increase concept for a three-story office building of Type IIIA construction.

ACTIVE FIRE PROTECTION

Active fire protection is characterized by detection and response. Detection of a fire through smoke or heat sensors initiates a chain of events that reduces threats from the fire. Once a detection system is activated, other programmed actions ensue, including: sounding of alarms, closure of smoke and fire dampers, closure of automated fire doors through de-energizing of magnetic door stops, and opening of fire sprinklers or other fire suppression system. Once detected, the fire can be controlled or extinguished manually through the use of extinguishers and fire hoses or automatically by fire sprinklers, fire fighting foam systems, hypoxic air systems or other devices.

IBC Chapter 9, *Fire Protection Systems*, prescribes minimum requirements for active fire protection systems to perform one or more of the following functions: detect a fire, alert the occupants or fire department of a fire emergency, control smoke, and control or extinguish the fire. Fire protective systems must be installed, operated and repaired in accordance with the *International Fire Code* (IFC).

AUTOMATED SPRINKLER SYSTEMS

Automatic sprinkler systems must be equipped with approved audible alarms that are monitored for integrity by an approved supervising station. The alarm must be installed on the exterior of the building in a location approved by the building official. This alarm is not intended to be an evacuation alarm. However, when a fire alarm system is installed, the sprinkler system

Sprinklered Buildings Minimum Interior Finish Classification by Occupancy <sup>a,b</sup>			
Location	Minimum Interior Finish Classification		
	A	B <sup>c</sup>	C
Exit enclosures and exit passageways <sup>d</sup>	I-3	A, B, E, M, R-1, R-4, I-1, I-2, I-4	F, R-2, R-3, S
Corridors	I-3	A, I-2, I-4	B, E, F, M, R, S, I-1
Enclosed spaces and rooms		I-2, I-4	A, B, E, F, M, R, S, I-1, I-3
<div><div><div><sup>a</sup> This simplified table is not comprehensive; more exceptions can be found in IBC Table 803.9 footnotes.</div><div><sup>b</sup> Automatic sprinkler system meeting the requirements of NFPA 13 or NFPA 13R as appropriate</div><div><sup>c</sup> Buildings less than three stories above grade plane permit</div></div><div><div>the reduction of the exit enclosure and exit passageway classifications to Class C.</div><div><sup>d</sup> Exit enclosures and exit passageways are permitted to use Class C wainscoting or paneling in the grade lobby for not more than 1,000 square feet of applied surface when applied to a noncombustible base.</div></div></div>			

Flame Spread Performance of Wood Products			
Class	Example	Flame Spread	Smoke Development
A	Fire-retardant-treated wood	0-25	0-450
B	Redwood, cedar	26-75	0-450
C	Most other wood species; softwood plywood; hardwood plywood; particleboard	76-200	0-450

Courtesy of the American Wood Council

Traditional wood floor coverings are exempt from floor finish requirements. Wood interior trim, such as baseboards, chair rails and handrails, are required to meet a Class C classification and cannot exceed 10% of the wall or ceiling area to which it is attached.

OPEN PERIMETER FIRE PROTECTION

In general, there are two passive measures that decrease a building's fire hazard: isolating the building from other structures and constructing the building with fire-resistive materials. IBC Chapter 5 provides for increases to the base tabular heights and areas of Table 503 for the addition of open perimeter spacing and the use of fire-resistive assemblies.

Isolating a building from adjacent structures decreases the fire hazard of a building as well as that of adjacent structures. IBC Equation

5-1 (see below) establishes modifications to the maximum allowable tabular floor areas based on the provision of building frontage open space and the provision of fire sprinklers.

$$A_a = \{ A_t + [ A_t \times I_f ] + [ A_t \times I_s ] \}$$

Where:

$A_a$  = Allowable building area per story (square feet)

$A_t$  = Tabular building area per story in accordance with Table 503 (square feet)

$I_f$  = Area increase factor due to frontage as calculated in accordance with Section 506.2

$I_s$  = Area increase factor due to sprinkler protection as calculated in accordance with Section 506.3

ALLOWABLE INCREASES FOR FRONTAGE PROTECTION

Buildings located next to a public way or open space adjoining a public way, with the exterior wall a minimum of 20 feet from the public way

must be interconnected with the building fire alarm system so that, when the sprinkler system activates, it sounds the evacuation alarms required for the fire alarm system.

Where the code requires that a building or portion thereof be equipped throughout with an automatic sprinkler system, the sprinklers must be in accordance with NFPA 13, *Standard for the Installation of Sprinkler Systems*. However, where allowed in buildings of Group R occupancy, up to and including four stories in height, the automatic sprinkler system shall be in accordance with NFPA 13R, *Standard for the Installation of Sprinkler Systems in Low-Rise Residential Occupancies*.

IBC Chapter 9 regulates the installation of automatic sprinklers in a building based on certain factors, such as occupancy group, height, size of the building/fire area, and occupant load. All water supply control valves and water-flow switches are required to be electrically supervised in accordance with Section 903.4. Central stations, remote supervising stations or proprietary supervising stations are approved services recognized in NFPA 72.

Note: The construction of one- and two-family dwellings is generally governed by the provisions of the *International Residential Code (IRC)*, which allows the installation of an automatic sprinkler system in accordance with NFPA 13D, *Standard for the Installation of Sprinkler Systems in One- and Two-Family Dwellings and Manufactured Homes*. If the one- or two-family dwelling does not comply with the building geometry limitations of the IRC, then the building must comply with the requirements of the IBC and an NFPA 13D system can still be used, but the installation of the 13D system will not provide for any increases to the allowable height or area. Automatic 13D systems in one- and two-family dwellings do not require electrical supervision, through exception.

Sprinklers offer a substantial increase to life safety, which is well documented and merits the consideration of designers for that reason alone. But their advantages can also be economic. The code offers considerable trade-offs for providing sprinklers, including:

- ▶ Increases to allowable heights and areas
- ▶ Reductions in corridor ratings and corridor opening protection
- ▶ Flexibility in means of egress (travel distance to exits, number and separation of exits, common path of travel)
- ▶ Reductions in dwelling unit separations
- ▶ Relief from emergency escape openings
- ▶ Relief from certain fire and smoke damper requirements
- ▶ Interior finish flexibility

## ALLOWABLE INCREASES FOR AUTOMATIC SPRINKLER SYSTEM PROTECTION

When a building is equipped throughout with an NFPA 13 compliant automatic sprinkler system, the allowable floor area is permitted to be increased by 300% for a one-story building and 200% for a multi-story building. In addition to the area increase, IBC Section 504.2 permits the tabular building heights to be increased by 20 feet and the number of stories above grade plane to be increased by one story, except in Group I-2 occupancies which are not allowed the increase of a story when using sprinklers.

For Group R buildings, a similar height increase (but no area increase) is given for the use of NFPA 13R compliant systems, up to 60 feet and four stories.

The figure above can also be used to illustrate the combined effect of frontage and automatic sprinkler systems on the allowable area calculation.

$$A_a = A_t + (A_t \times I_f) + (A_t \times I_s)$$

$$A_a = 28,500 + (28,500 \times 0.75) + (28,500 \times 2) = 106,875 \text{ ft}^2 \text{ per floor}$$

$$A_t = 320,625 \text{ ft}^2 (> 33,750 \text{ actual})$$

This assumes full open frontage (as the example shows) and sprinklers.

Including automatic sprinklers in the building will permit the largest allowable area and greatest number of stories. As this example demonstrates, the code permits a much larger wood building than is proposed.

## CHAPTER 9 AREA LIMITS FOR NONSPRINKLERED BUILDINGS

Many occupancies have area thresholds beyond which sprinklers are required per IBC Section 903. The same thresholds apply to all construction types. When increases are taken for open frontage in nonsprinklered buildings, the allowable area per floor can exceed allowable fire areas and a sprinkler system may be required. If sprinklers are provided, however, allowable area increases for both sprinklers and open frontage may be taken. Alternatively, fire areas may be kept below sprinkler thresholds by compartmentalizing floor areas with fire-resistance-rated construction in accordance with the definition for fire area and the requirements of Chapter 7.

The requirement for sprinklers can also be triggered by specific use, height above grade, or occupant load. For instance, although unsprinklered Group A-2 occupancies (restaurants) may exceed one story above grade in Type III construction, if the A-2 is

above the level of exit discharge (typically the first story), or has an occupant load exceeding 100, the A-2 building must be sprinklered in accordance with IBC Section 903.2.1.2. Increases for both open frontage and sprinklers could then be taken.

## PRECAUTIONS DURING CONSTRUCTION

IBC Chapter 33 provides minimum safety precautions for fire during construction and the protection of adjacent public and private properties. The section includes provisions for fire extinguishers, standpipes, means of egress, and sprinkler system commissioning. The IFC also contains detailed requirements for fire precautions during construction.

### Fire Extinguishers

During construction, one portable fire extinguisher shall be placed at each stairway on all floor levels with combustible materials, in each storage or construction shed and where special hazards exist, such as the storage and use of flammable and combustible liquids.

### Maintaining Means of Egress

Required means of egress must be maintained at all times during construction, demolition, remodeling or alterations and additions to buildings. During construction, when a building height reaches 50 feet or four stories, a minimum of one temporary lighted stairway shall be provided unless a permanent stairway is available for use at all times per IBC Section 3310.

### Standpipes

In buildings required to have standpipes, not less than one standpipe shall be available during construction for fire department use. The standpipe shall be installed before the construction is 40 feet above fire department access. The standpipe is placed adjacent to usable stairs and has fire department hose connections. The standpipe is extended during construction to within one floor of the highest point of construction having flooring per IBC Section 3311. During demolition a standpipe shall be maintained in operable condition. The standpipe may be demolished floor by floor as demolition proceeds, but not more than one floor below the floor being demolished.

### Sprinkler System Commissioning

The sprinkler system must be tested and approved before the certificate of occupancy is awarded per IBC Section 3312 and the building is occupied, except as provided in Section 111.3, temporary occupancy.



## Additional Requirements

Additional requirements in the IFC include:

- ▶ Temporary heating equipment must be listed and labeled; installation and maintenance of the equipment must be in accordance with the listing (IFC 3303).
- ▶ Smoking is prohibited except in approved areas with posted signage (IFC 3304).
- ▶ A fire watch must be maintained with qualified personnel if required by the fire code official (IFC 3304).
- ▶ Welding operations must follow the provisions of IFC Chapter 35. Electrical wiring must follow the provisions of NFPA 70 (IFC 3304).
- ▶ The owner must designate a fire prevention superintendent responsible for the fire prevention program during construction.



Photo: VanDorpe Chou Associates

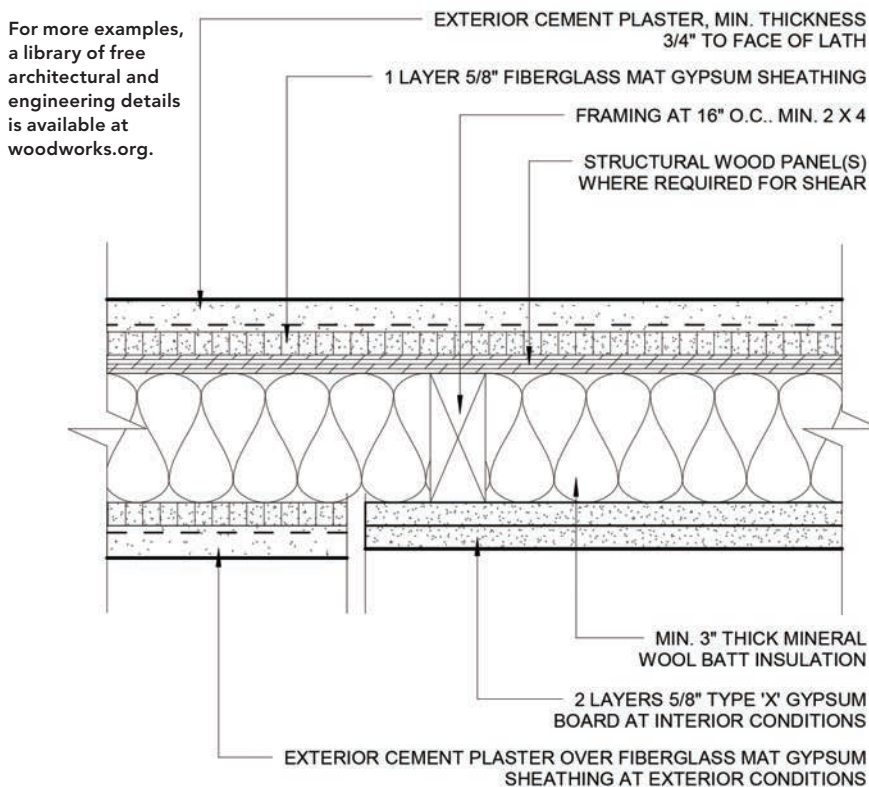
## FIRE SAFETY DURING CONSTRUCTION

Although less than 2% of building fires occur during construction, this phase presents unique risk scenarios that make any building more vulnerable regardless of material. The IBC provides extensive safety precautions for this phase, but the fires that do occur are often caused when required elements—such as fire doors, smoke alarms and sprinklers—have not been put in place. For this reason, construction site fire safety includes some unique challenges that are best addressed through education and increased planning.

Requirements for the program are listed in IFC Section 3308.

- ▶ An accessible emergency phone is provided in an approved location at the construction site. The construction site street address and fire department emergency phone number must be posted by the phone (IFC 3309).
- ▶ Fire-fighting vehicle access must be provided within 100 feet of temporary or permanent fire department connections (IFC 3310).
- ▶ An approved water supply for fire protection must be available when combustible material is at the construction site (IFC 3312).
- ▶ Requirements for safeguards during roofing operations are listed in IFC Section 3317.

## EXAMPLE OF 2-HOUR EXTERIOR WALL



2-HOUR RATING PER UL DESIGN NO. U371

Image courtesy Togawa Smith Martin, Inc

## SUMMARY

Wood construction offers advantages in terms of cost, design versatility and sustainability—while meeting code requirements for safety in buildings that range from schools and offices to mid-rise/multifamily, civic, institutional, industrial and retail. It has a history of proven performance and is making history with new mass timber products that offer exceptional strength and continue to expand the possibilities wood design. For more detailed information on the subjects covered in this CEU, a new version of the American Wood Council's *Code Conforming Wood Design* based on the 2009 IBC is available as a free download at [www.awc.org](http://www.awc.org).



The reThink Wood initiative is a coalition of interests representing North America's wood products industry and related stakeholders. The coalition shares a passion for wood and the forests it comes from. Innovative new technologies and building systems have enabled longer wood spans, taller walls, and higher buildings, and continue to expand the possibilities for wood use in construction. [www.rethinkwood.com](http://www.rethinkwood.com)

American Wood Council is the leading developer of engineering data, technology, and standards on structural wood products in the U.S. These tools are used widely by design professionals, building officials, and manufacturers of traditional and engineered wood products to ensure the safe and efficient design and use of wood structural components. [www.awc.org](http://www.awc.org)

WoodWorks is an initiative of the Wood Products Council established to provide free one-on-one project support, education, and resources related to the design of non-residential and multifamily wood buildings. If you have a project that requires technical expertise in wood design, contact [help@woodworks.org](mailto:help@woodworks.org). [www.woodworks.org](http://www.woodworks.org)