



FirePower 2100 NGFW

Elodie Hurtevent – Security BDM Commercial

21 March 2017



Capture the NGFW Opportunity

"Less than 40% of enterprise Internet connections today are secured using next-generation firewalls (NGFWs)."

"By year-end 2018, this will rise to at least 85% of the installed base, with 90% of new enterprise-edge purchases being NGFWs as more enterprises realize the benefits of application and user control."

Source: *Framework for Migrating to a Next-Generation Firewall*; Gartner, 2015

EMEAR Opportunity

- **Competitive Take-Out*:**
\$1.092 B
- **ASA Midrange Refresh:**
\$760M opportunity
- **TOTAL: \$1.852 B**

*Source: *IDC Security Appliance Tracker, Top 4 vendors units >3 years old*

Security now a boardroom issue.

The market needs threat defense.

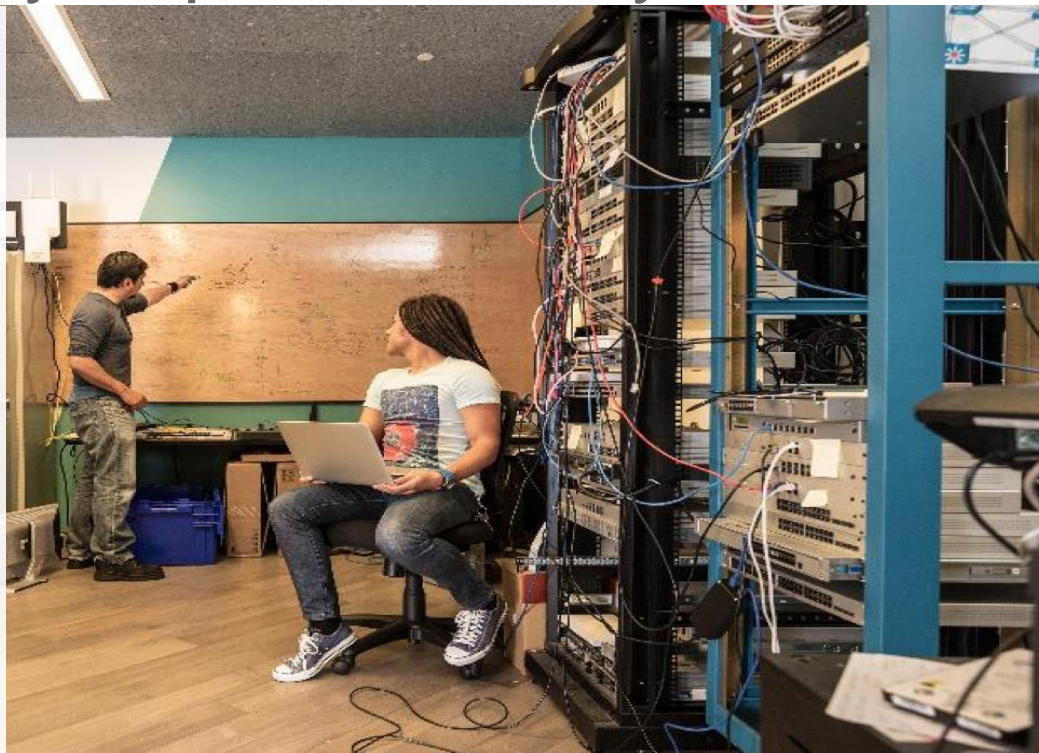
Business resiliency requires security, but...

**Security hasn't scaled
as fast as your network**

**It's costly and complex
to deploy and maintain**

**Ineffective security
doesn't stop malware**

**Must overprovision
to avoid performance
problems**



Business resiliency through superior threat defense

Introducing the Firepower 2100 Series NGFW



Superior threat defense

Industry-best threat protection and rapid breach detection



Sustained performance

Threat inspection with minimal throughput impact



Simpler management

Easier management, lower operating costs

Firepower 2100 Series



FPR 2140 12x 1G 12x 10G Port



FPR 2130 12x-1G 12x 10G Port



FPR 2120 16x 1G Port



FPR 2110 16x 1G Port

Firepower
2100

High Performance, Purpose Built
Hardware for Cisco NGFW

Firepower
2100

Available in 4 Platforms

Firepower
2100

Higher Port Density in 1 Rack Unit

Firepower
2100

10 Gbps Support (2130 and 2140)

New NGFWs with leading price performance



Models 2110 & 2120

Low-cost, high-performance NGFW
1RU, Fixed 16-port 1GbE
connectivity

Models 2130 & 2140

High-performance, 1 RU NGFW
Network modularity, up to 24-port
1GbE and 12 10GbE connectivity

1.9 to 8.5 Gbps FW+AVC+IPS throughput

With leading security effectiveness



Models 2110 & 2120

Low-cost, high-performance NGFW
1RU, Fixed 16-port 1GbE connectivity



Models 2130 & 2140

High-performance, 1 RU NGFW
Network modularity, up to 24-port 1GbE
and 12-port 10GbE connectivity

Cisco Firepower 2100 Series NGFWs deliver:



Superior midrange price-performance

Up to 8.5 Gbps FW+IPS

Less than 50% of the cost per-protected Mbps vs. competitors

200% greater throughput vs. competitors when IPS is enabled



Optimized architecture

Sustains throughput performance as threat inspection services are added

Dual multi-core CPUs

Future-proofs your investment



Advanced threat detection

Integrates Cisco Firepower NGIPS and Cisco AMP

Ranked #1 in breach detection by NSS Labs

Superior TTD of advanced threats

Firepower 2100 delivers scalable performance

Sustains performance when security services like NGIPS are enabled

Large Packet Throughput Comparison* — Midrange NGFWs

Services	Cisco Firepower 2100 Series	Competitor "A"	Competitor "B"	Competitor "C"
FW+AVC	1.9 - 8.5 Gbps	2.0 – 4.0 Gbps	2.0 – 3.0 Gbps	2.5 – 7.0 Gbps
FW+AVC+IPS	1.9 – 8.5 Gbps	1.0 – 2.0 Gbps	1.0 – 1.5 Gbps	1.7 – 3.5 Gbps
Throughput Degradation (vs. FW+AVC)	~ 0%	- 50%	- 50%	- 50%

Sustains performance

Competing solutions can't keep up

*Source: 1024byte or larger TCP throughput from datasheets for each respective vendor.

Ordering and Subscriptions

1

Appliances

Model

Firepower 2110 NGFW	\$10,995.00
Firepower 2120 NGFW	\$19,995.00
Firepower 2130 NGFW	\$29,995.00
Firepower 2140 NGFW	\$64,995.00

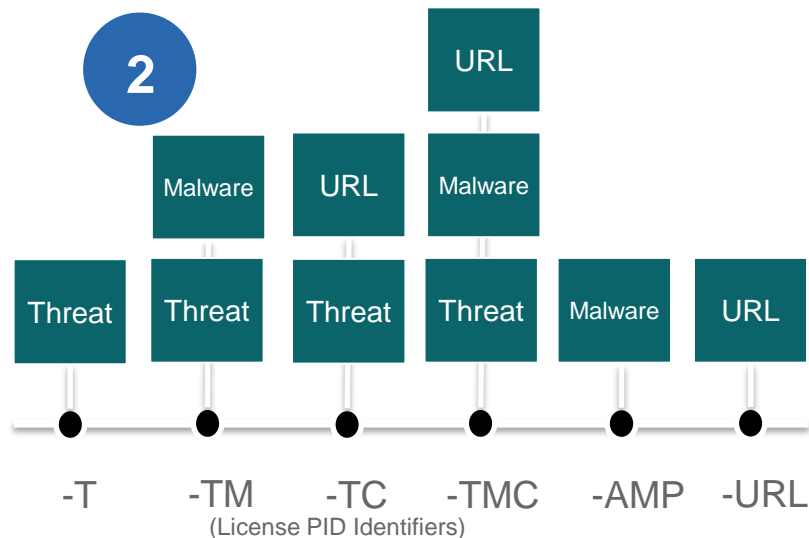
3

Subscriptions (1, 3, 5 Year)

DESCRIPTION

DESCRIPTION	BASE PRICE
FPR2110 Threat, Malware and URL 3 Years	\$13,460.00
FPR2120 Threat, Malware and URL 3 Years	\$24,475.00
FPR2130 Threat, Malware and URL 3 Years	\$36,715.00
FPR2140 Threat, Malware and URL 3 Years	\$79,555.00

2



Simple Ordering

- 1) Size and Select Appliance
- 2) Lead with “TMC” Threat Subscription
- 3) 3 & 5 Year *Terms = Best Value*

When to lead with what



Firepower 2100 Series

Internet Edge NGFW applications for threat inspection/protection

- Application Visibility & Control
- Next-gen IPS
- URL Filtering
- Advanced Malware Protection

FlexConfig can help address some specific routing protocols

5525-X | 5545-X | 5555-X

Customer insists on ASA or where specific functions are required;

- Multi-context
- Active – Active Failover
- Clustering support

Cisco Firepower NGFW Offering



2100 Series

Best price-performance
NGFW for Internet Edge,
10 GbE connectivity,
1.9 - 8.5 Gbps throughput*



4100 Series

High-performance 1RU
NGFW for Data Center,
40 GbE connectivity,
10 - 24 Gbps throughput*



9300 Appliance

Carrier-class performance
NGFW for Campus and
Service Providers,
24 - 133 Gbps throughput*



Virtual Appliances

Scalable performance
NGFW for Data Centers and
Cloud Service Providers
For VMware, Xen, AWS, Azure

Superior Threat Defense: FW, AVC, NGIPS, URL, AMP, DDoS

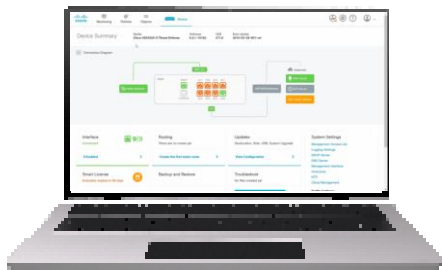
* Throughput with FW + AVC + IPS enabled on Firepower Threat Defense

Management designed for the user



On-box

Firepower Device Manager



Enables easy on-box management of common security and policy tasks

Centralized

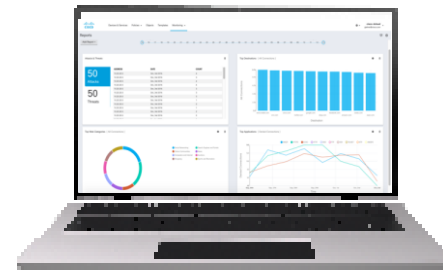
Firepower Management Center



Enables comprehensive security administration and automation of multiple appliances

Cloud-based

Cisco Defense Orchestrator



Enables cloud-based policy management of multiple deployments

- EMEAR Security Partner Community: <https://communities.cisco.com/docs/DOC-63689>
- More features details: <http://www.cisco.com/c/en/us/products/security/firepower-2100-series/index.html>
- Migration guide: <http://www.cisco.com/c/dam/en/us/products/collateral/security/mig-guide-en.pdf>
- Cisco Network Security Ordering Guide: <https://communities.cisco.com/docs/DOC-70838>

Thank You

