



Firestone Building Products

EPDM Training

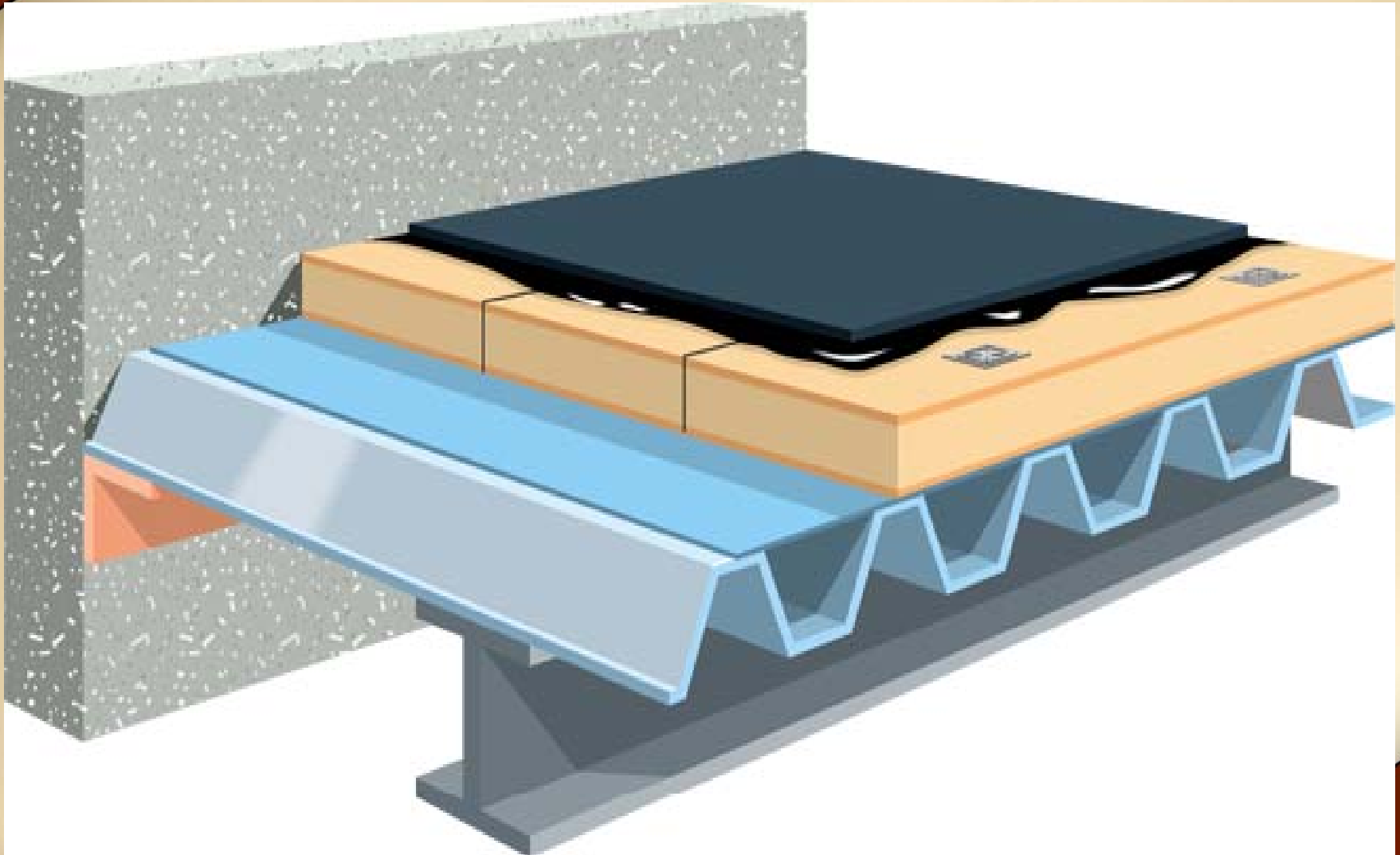
Firestone
BUILDING PRODUCTS



Membrane Attachment



Fully Adhered EPDM





Fully Adhered EPDM



Bonding Adhesive applied
to thin.



Fully Adhered EPDM



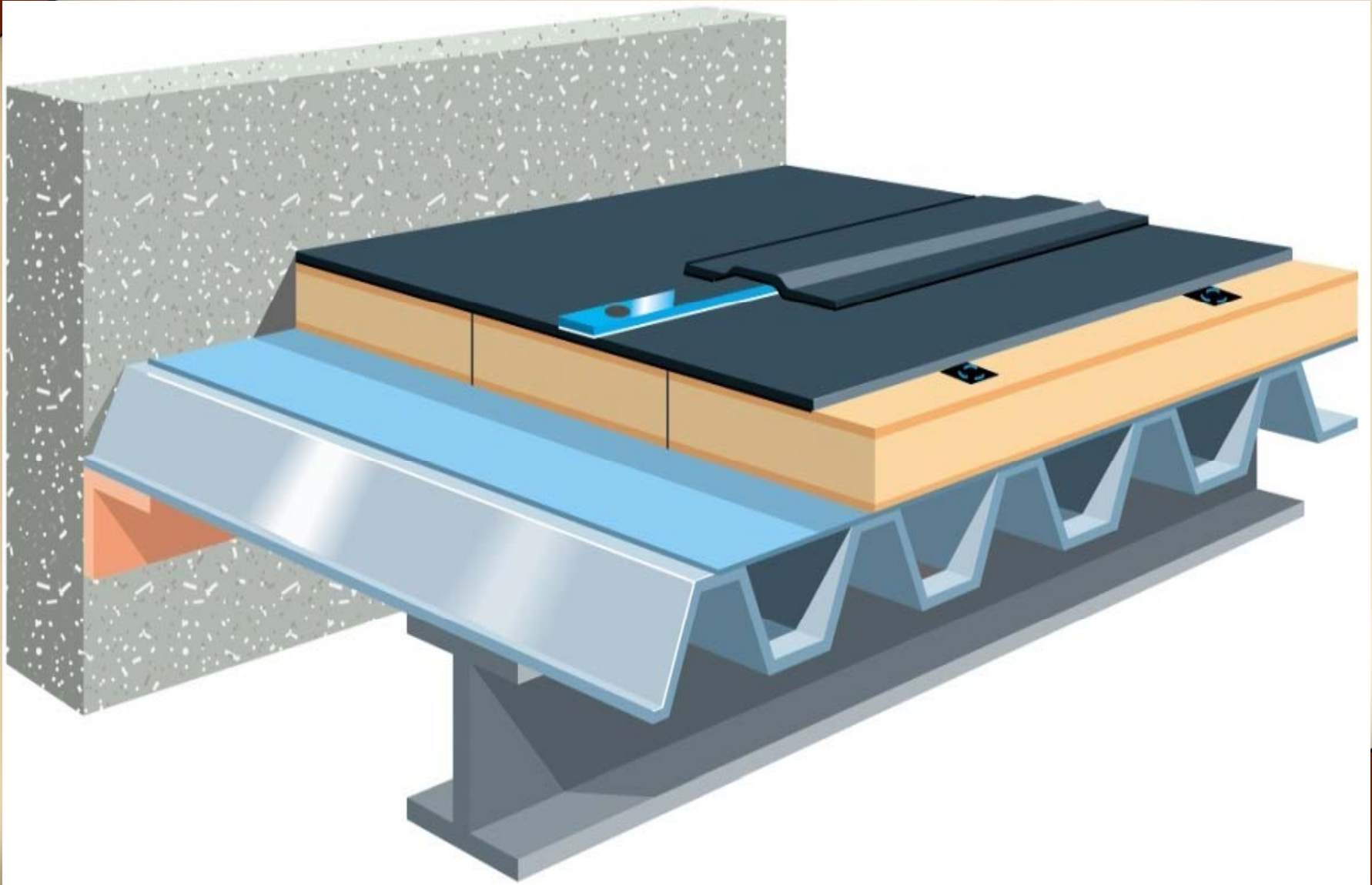


Fully Adhered EPDM Tips

- Fold sheets in half.
- Apply Bonding Adhesive to the insulation and the membrane.
- Allow for the Bonding Adhesive to flash off completely.
- Once flashed off, gently push the membrane onto the insulation avoiding wrinkles.
- Broom over the area that was bonded together.
- Repeat the process on the other half of the sheet.

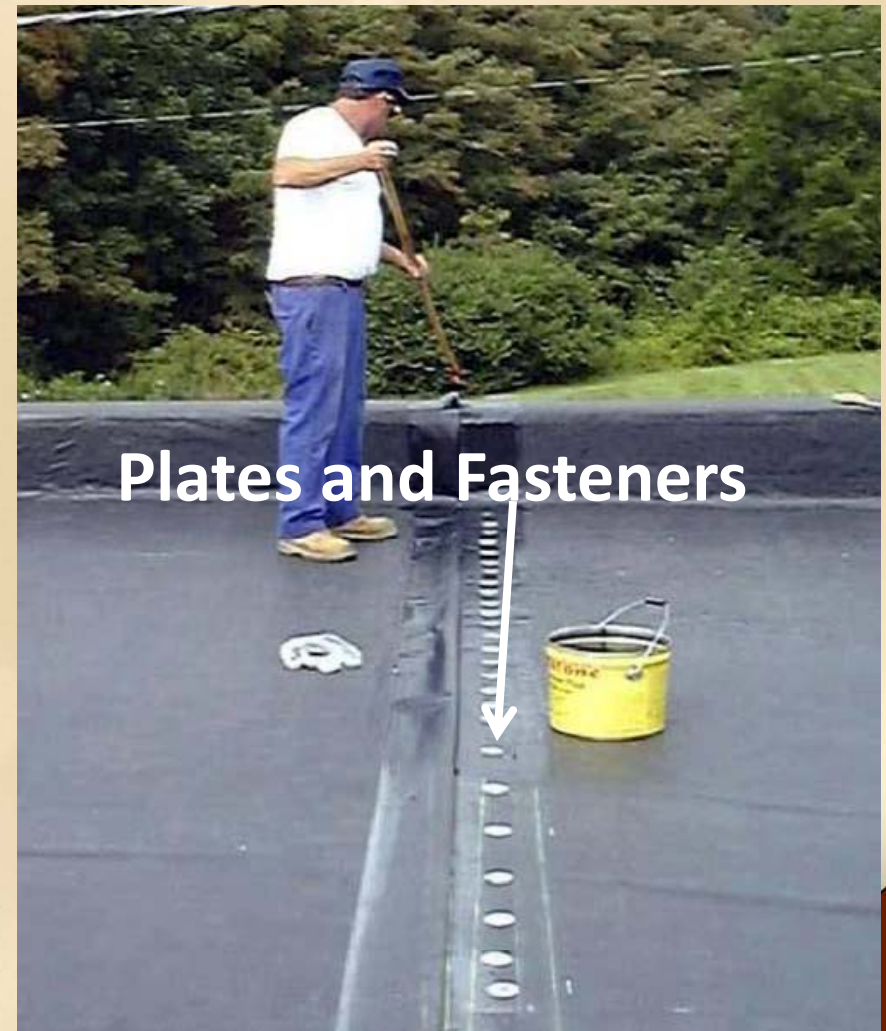


Mechanically Attached EPDM



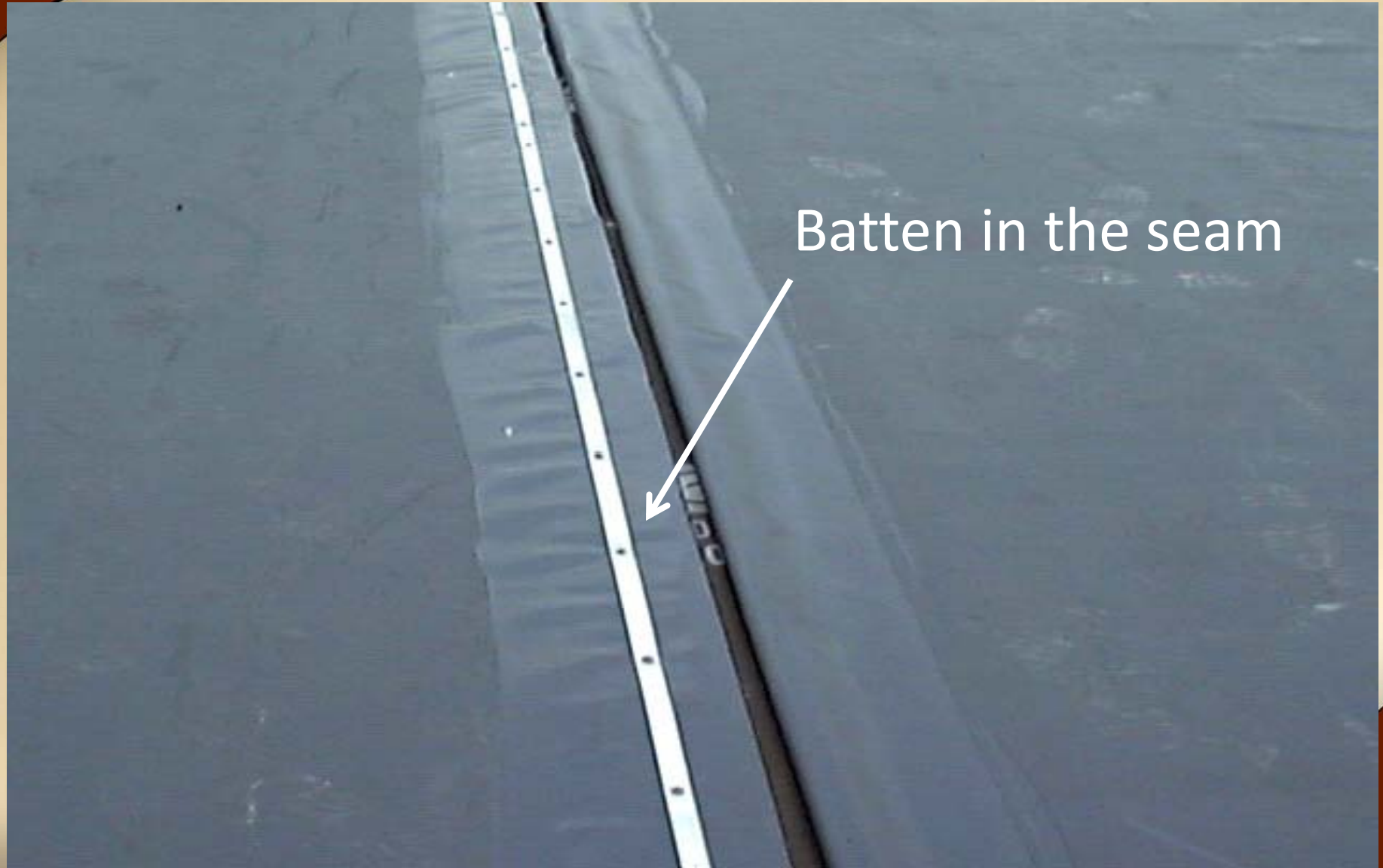


Mechanically Attached EPDM





Mechanically Attached EPDM



Batten in the seam



Mechanically Attached EPDM Tips

- Do not overdrive fasteners!
- Ensure that the plates and fasteners are approved for seaming applications. No insulation fasteners in the seams.
- Round the edges of the batten strips.
- Use the correct fastening rate for plates and fasteners and batten strip.
- Batten strip requires a cover strip.



Ballasted EPDM





Ballasted EPDM



Inadequate amount of ballast.



Ballasted EPDM Tips

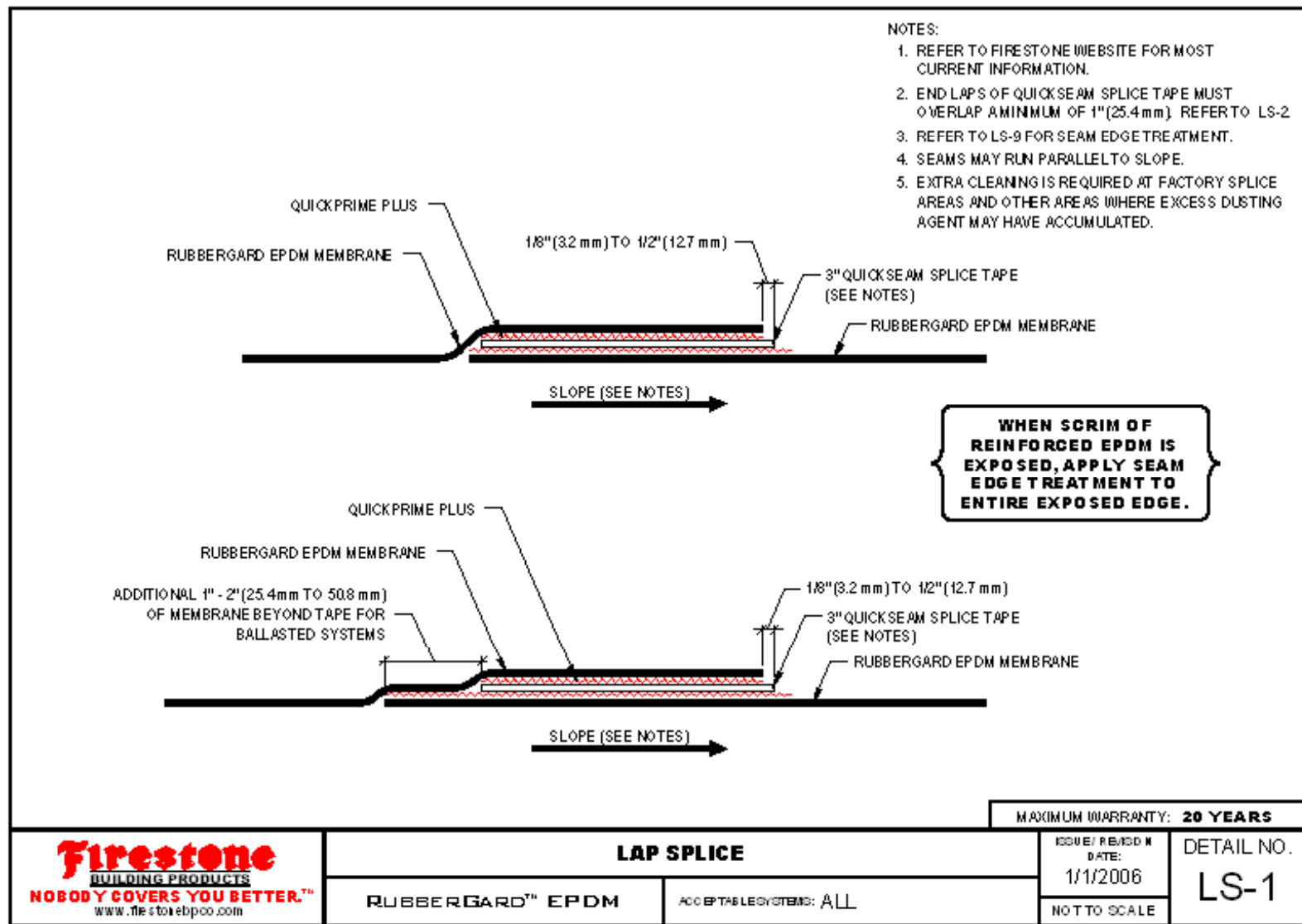
- $\frac{3}{4}$ - 1-1/2" rounded river rock @ 10 psf min required.
 - ballast may be enhanced if needed.
- Use care when distributing ballast throughout the roof.
- Use good roofing practices to ensure that ballast does not enter drains, scuppers, or gutters.
- Ballast pavers are recommended as use of walkway pads in areas that require them.



Lap Splicing

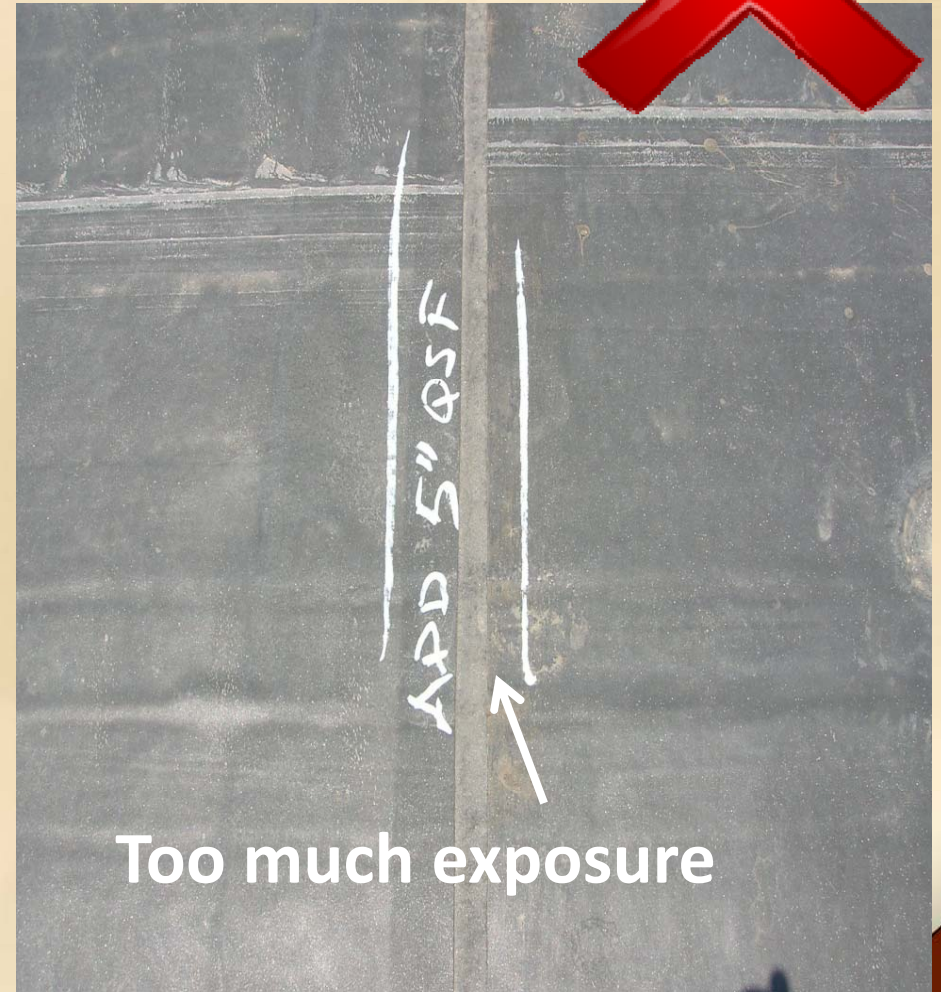
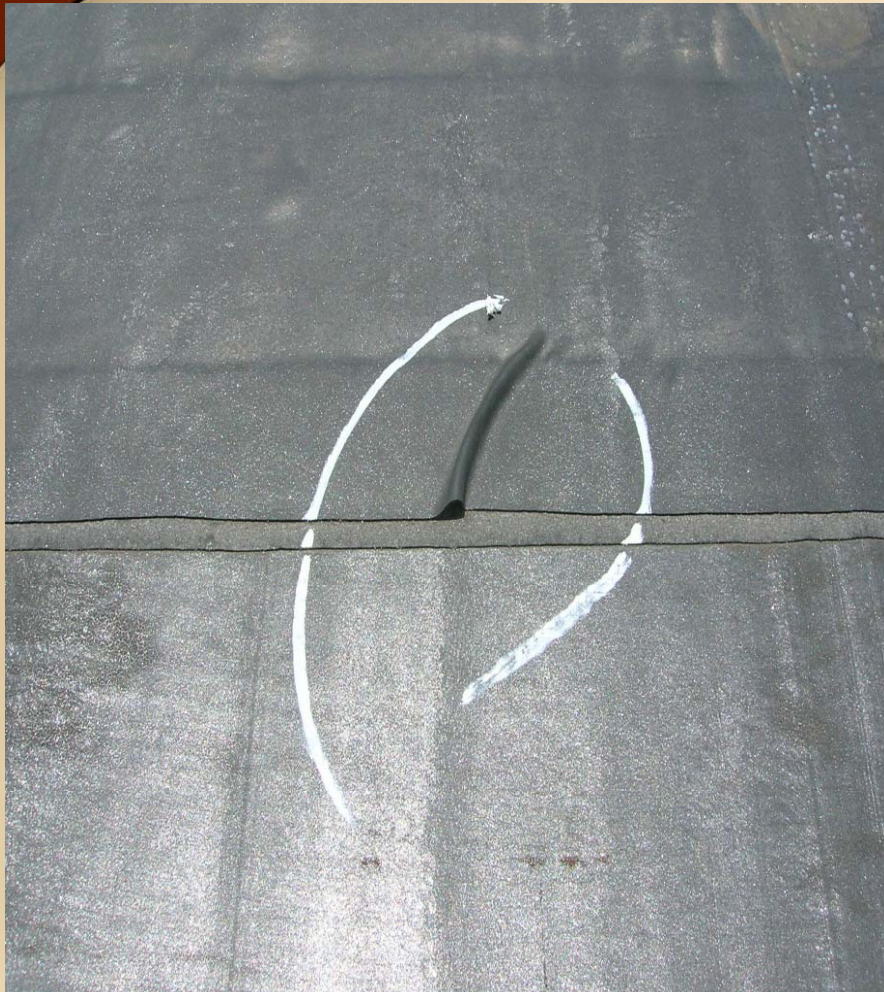


Details: Standard Lap Splice





Details: Lap Splice



Too much exposure

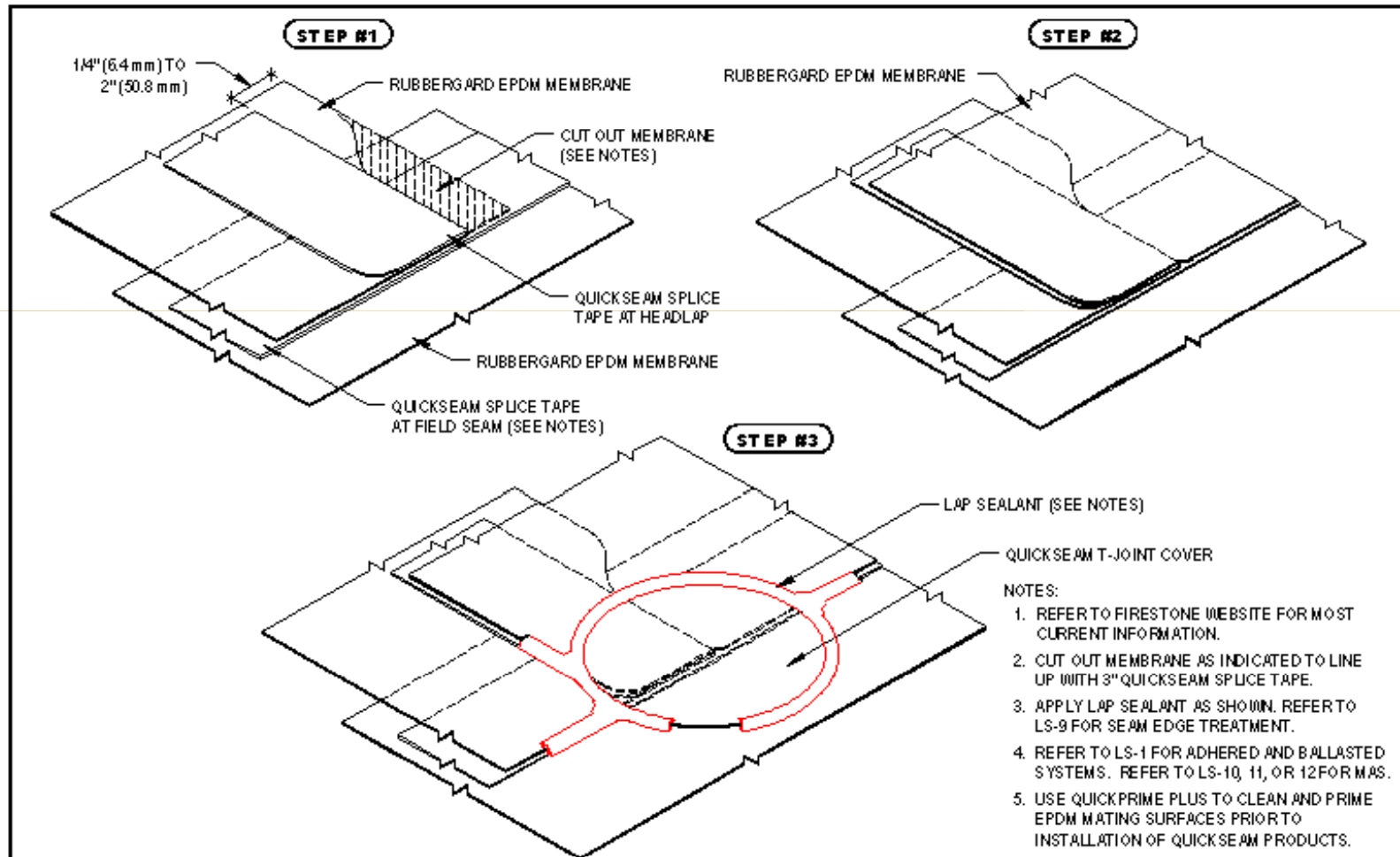


Details: Lap Splice





Details: Headlap over Field Seam



MAXIMUM WARRANTY: 20 YEARS

Firestone
BUILDING PRODUCTS
NOBODY COVERS YOU BETTER.™
www.firestonebpo.com

LAP SPLICE WITH HEADLAP OVER FIELD SEAM USING QUICKSEAM T-JOINT COVER - INSTALLATION STEPS

RUBBERGARD™ EPDM

ACCEPTABLE SYSTEMS: ALL

ISSUE / REVISION #
DATE:
1/1/2006

NOT TO SCALE

DETAIL NO.

LS-4a

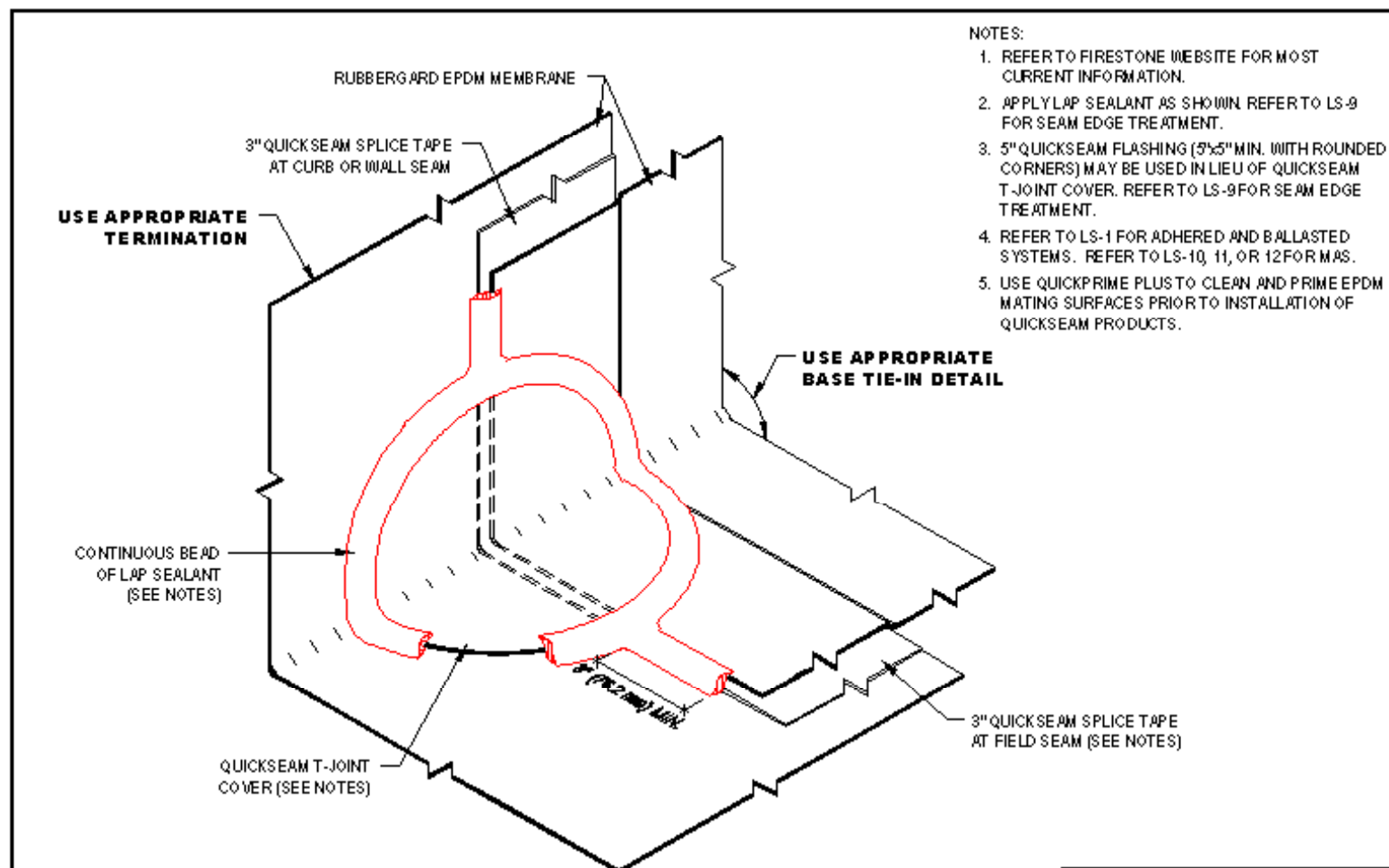


Details: Headlap Splice





Details: Field to Curb/Wall Lap Splice



NOTES:

1. REFER TO FIRESTONE WEBSITE FOR MOST CURRENT INFORMATION.
2. APPLY LAP SEALANT AS SHOWN. REFER TO LS-9 FOR SEAM EDGE TREATMENT.
3. 5" QUICKSEAM FLASHING (5"x5" MIN. WITH ROUNDED CORNERS) MAY BE USED IN LIEU OF QUICKSEAM T-JOINT COVER. REFER TO LS-9 FOR SEAM EDGE TREATMENT.
4. REFER TO LS-1 FOR ADHERED AND BALLASTED SYSTEMS. REFER TO LS-10, 11, OR 12 FOR MAS.
5. USE QUICKPRIME PLUS TO CLEAN AND PRIME EPDM MATING SURFACES PRIOR TO INSTALLATION OF QUICKSEAM PRODUCTS.

MAXIMUM WARRANTY: **20 YEARS**

Firestone
BUILDING PRODUCTS
NOBODY COVERS YOU BETTER.™
www.firestoneepdm.com

**LAP SPLICE AT FIELD TO CURB / WALL FLASHING TRANSITION
USING QUICKSEAM T-JOINT COVER**

RUBBERGARD™ EPDM

APPLICABLE SYSTEMS: ALL

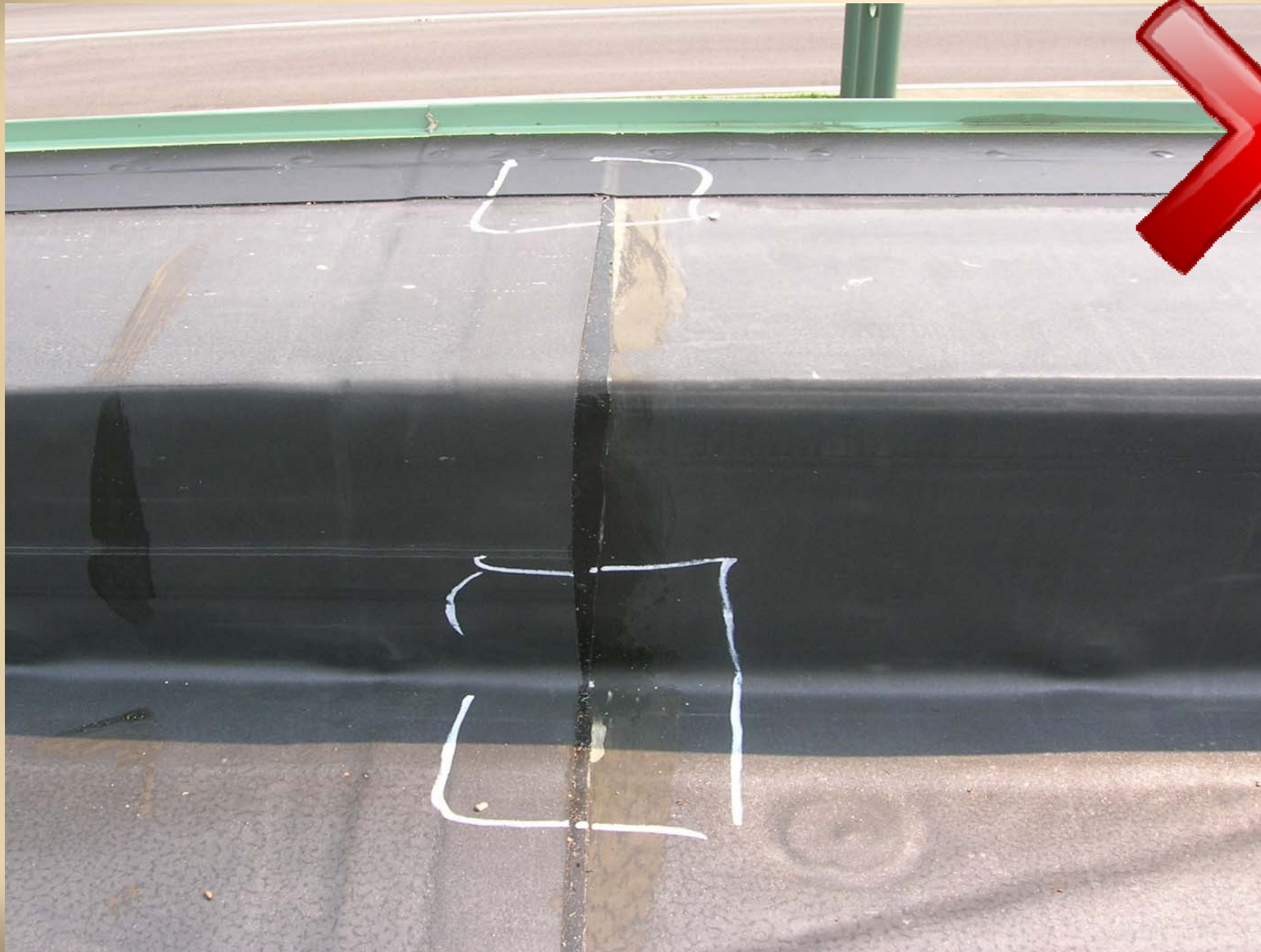
ISSUE / REVISION #
DATE:
1/1/2006

NOT TO SCALE

DETAIL NO.
LS-8



Details: Field to Curb/Wall Lap Splice





Details: Field to Curb/Wall Lap Splice





Lap Splicing Tips

- Correctly mark the areas to be spliced together so that there is 1/8" of Quickseam Splice Tape exposed.
- Apply primer to areas where the two field sheets will be spliced together.
- Apply Quickseam Splice Tape to the top of the bottom sheet first. Leave the release paper on and roll the seam tape onto the bottom sheet before putting the top sheet in place.
- With the release paper still in on the tape, put the top sheet in place.
- Remove the release paper at a 45° angle.
- Roll the top sheet into the tape at an angle to avoid air bubbles.

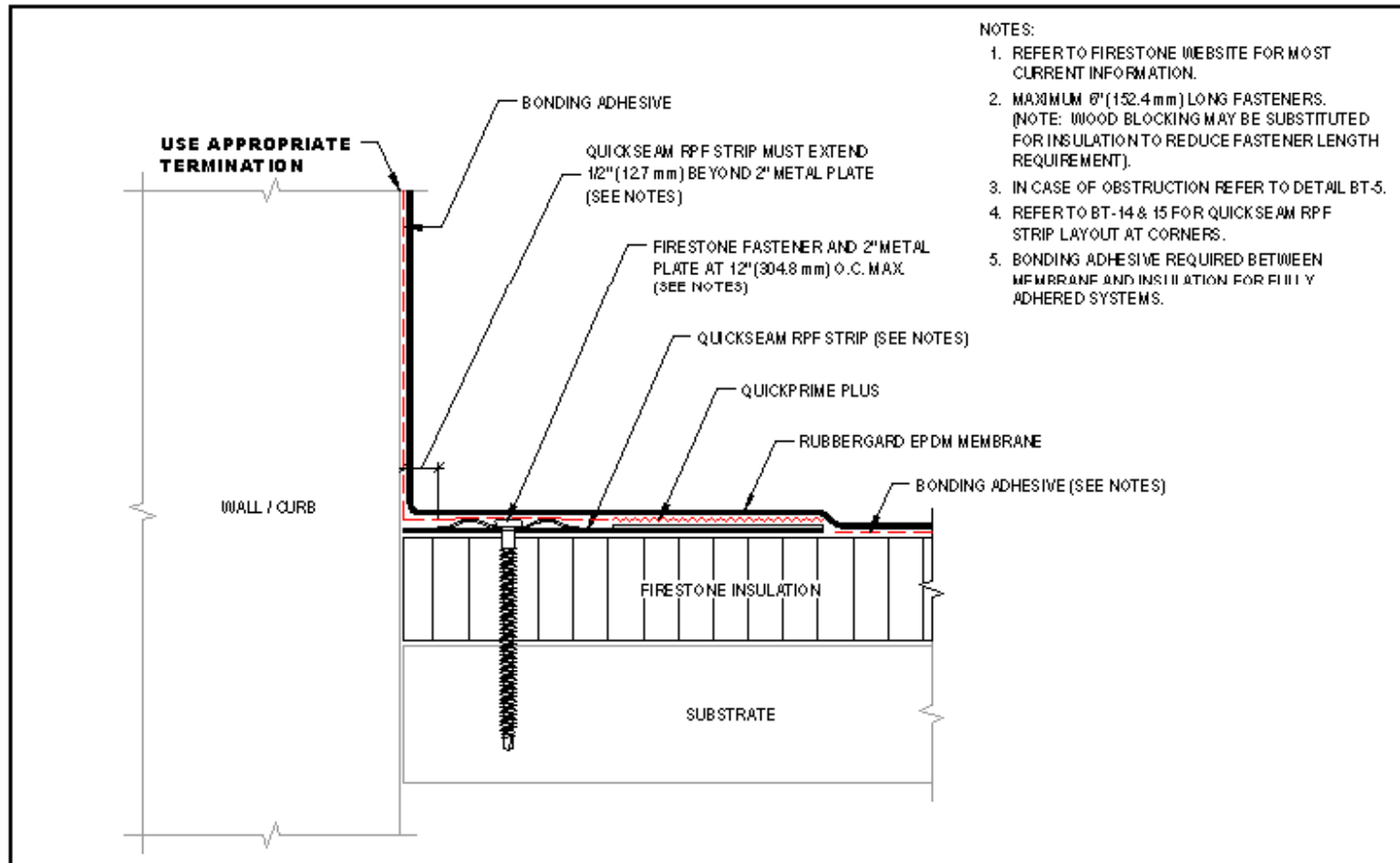




Base Tie-in and Roof Edge



Details: Base Tie-In – RPF Strip, 2” plates to deck



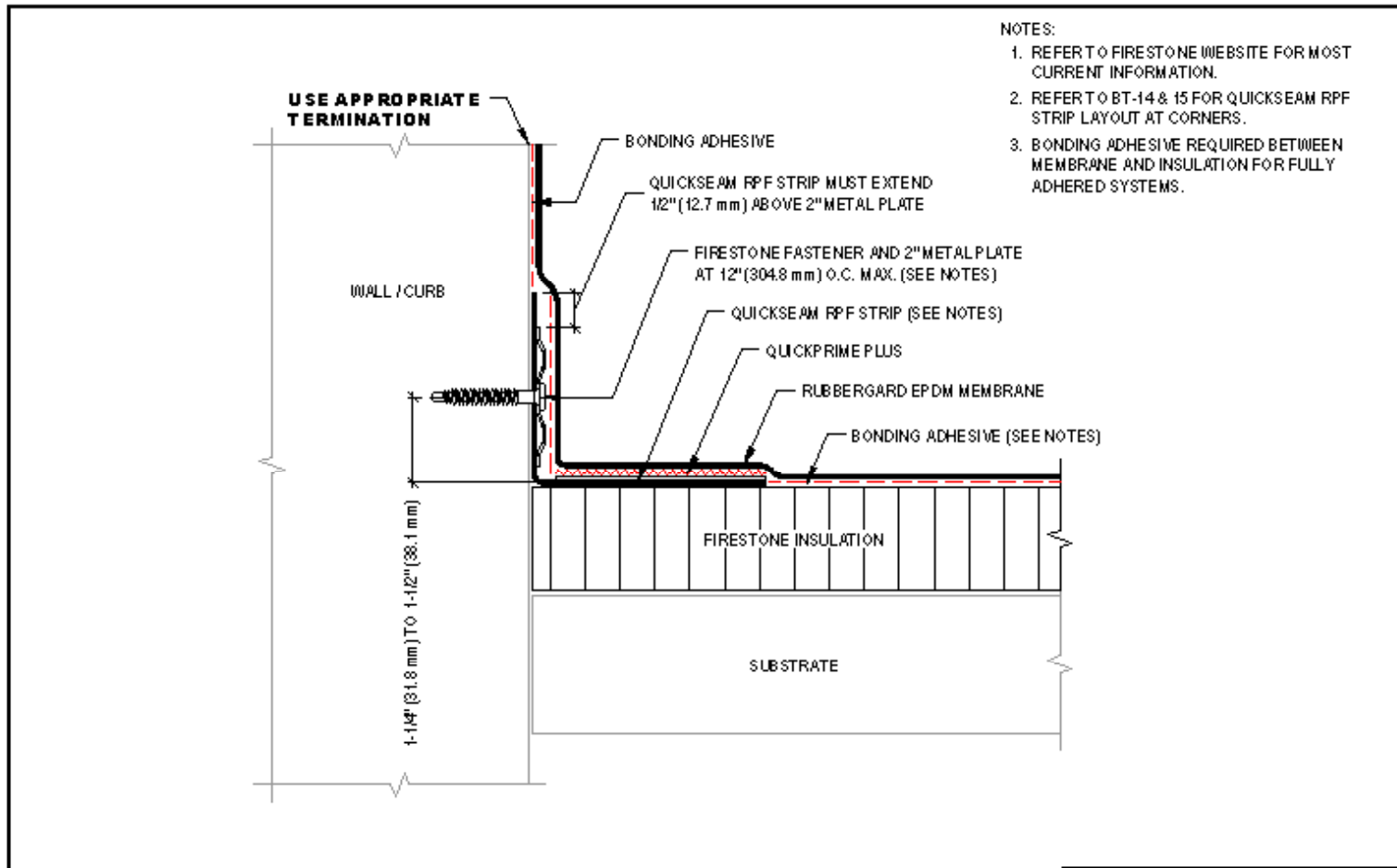
- NOTES:
1. REFER TO FIRESTONE WEBSITE FOR MOST CURRENT INFORMATION.
 2. MAXIMUM 8" (152.4 mm) LONG FASTENERS. (NOTE: WOOD BLOCKING MAY BE SUBSTITUTED FOR INSULATION TO REDUCE FASTENER LENGTH REQUIREMENT).
 3. IN CASE OF OBSTRUCTION REFER TO DETAIL BT-5.
 4. REFER TO BT-14 & 15 FOR QUICKSEAM RPF STRIP LAYOUT AT CORNERS.
 5. BONDING ADHESIVE REQUIRED BETWEEN MEMBRANE AND INSULATION FOR FULLY ADHERED SYSTEMS.

MAXIMUM WARRANTY: **20 YEARS**

	BASE TIE-IN WITH QUICKSEAM RPF AND 2" METAL PLATES FASTENED TO DECK		ISSUE / REVISION DATE: 1/1/2006	DETAIL NO. BT-1
	RUBBERGARD™ EPDM	ACCEPTABLE SYSTEMS: ALL	NOT TO SCALE	



Details: Base Tie-In – RPF Strip, 2” plates to wall.



MAXIMUM WARRANTY: **20 YEARS**

Firestone
BUILDING PRODUCTS
NOBODY COVERS YOU BETTER.™
www.firestonebuildingproducts.com

BASE TIE-IN WITH QUICKSEAM RPF AND 2" METAL PLATES FASTENED TO WALL / CURB

RUBBERGARD™ EPDM

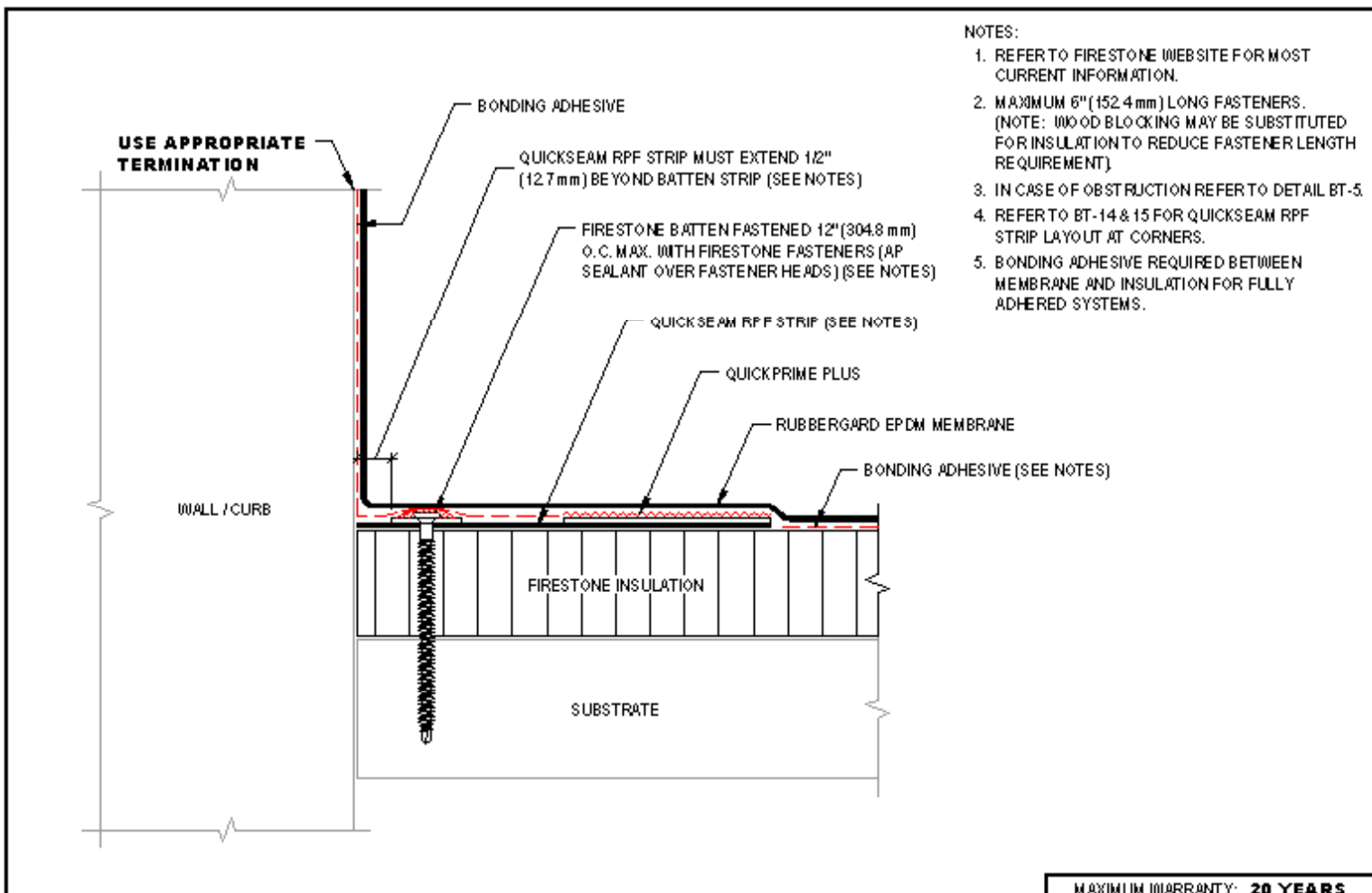
ACCEPTABLE SYSTEMS: ALL

ISSUE / REVISION
DATE:
1/1/2006
NOT TO SCALE

DETAIL NO.
BT-2



Details: Base Tie-In – RPF Strip, Batten to deck



Firestone
BUILDING PRODUCTS
NOBODY COVERS YOU BETTER.™
www.firestonebuildingproducts.com

BASE TIE-IN WITH QUICKSEAM RPF AND BATTEN FASTENED TO DECK

RUBBERGARD™ EPDM

ACC. BY TAB. LEG. SYSTEMS: ADHERED, MAS

MAXIMUM WARRANTY: 20 YEARS

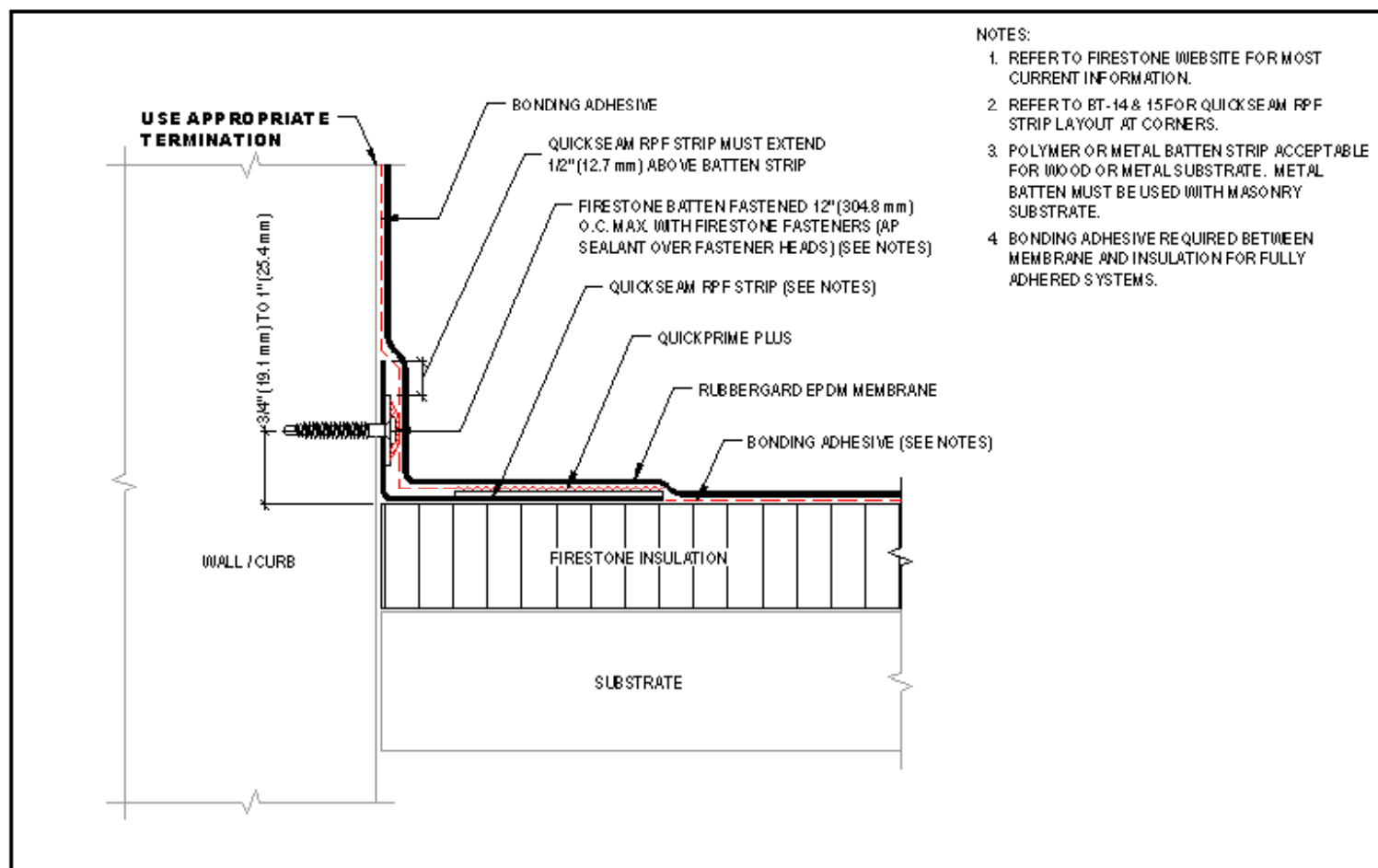
ISSUE / REVISION DATE:
1/1/2006

DETAIL NO.
BT-3

NOT TO SCALE



Details: Base Tie-In – RPF Strip, Batten to wall.



- NOTES:
1. REFER TO FIRESTONE WEBSITE FOR MOST CURRENT INFORMATION.
 2. REFER TO BT-14 & 15 FOR QUICKSEAM RPF STRIP LAYOUT AT CORNERS.
 3. POLYMER OR METAL BATTEN STRIP ACCEPTABLE FOR WOOD OR METAL SUBSTRATE. METAL BATTEN MUST BE USED WITH MASONRY SUBSTRATE.
 4. BONDING ADHESIVE REQUIRED BETWEEN MEMBRANE AND INSULATION FOR FULLY ADHERED SYSTEMS.

Firestone
BUILDING PRODUCTS
NOBODY COVERS YOU BETTER.™
www.firestoneppco.com

BASE TIE-IN WITH QUICKSEAM RPF AND BATTEN FASTENED TO WALL / CURB

RUBBERGARD™ EPDM ACCEPTABLE SYSTEMS: ALL

MAXIMUM WARRANTY: **20 YEARS**

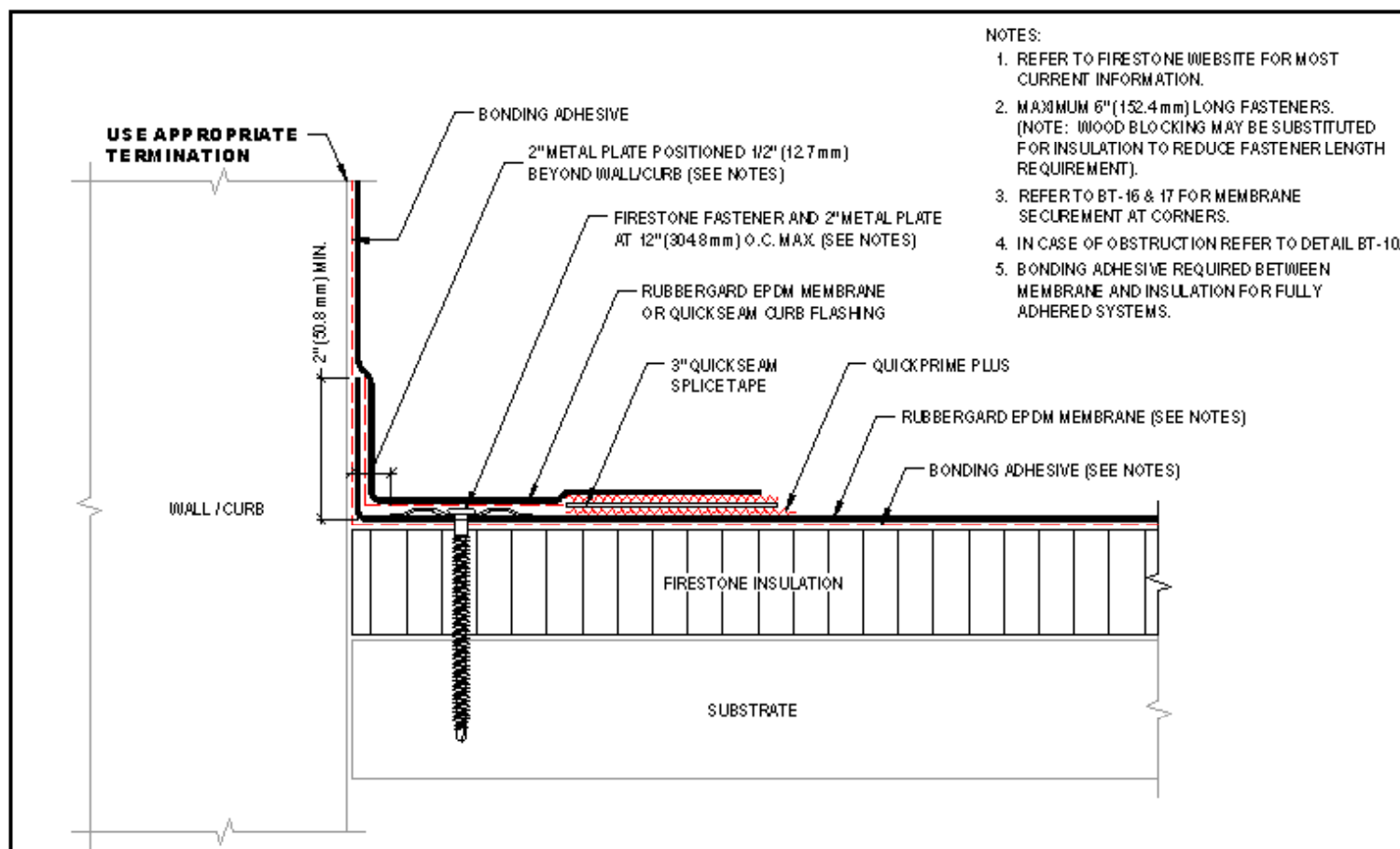
ISSUE / REVISION DATE:
1/1/2006

DETAIL NO.
BT-4

NOT TO SCALE



Details: Base Tie-In – 2" plates



- NOTES:
1. REFER TO FIRESTONE WEBSITE FOR MOST CURRENT INFORMATION.
 2. MAXIMUM 6" (152.4 mm) LONG FASTENERS. (NOTE: WOOD BLOCKING MAY BE SUBSTITUTED FOR INSULATION TO REDUCE FASTENER LENGTH REQUIREMENT).
 3. REFER TO BT-16 & 17 FOR MEMBRANE SECUREMENT AT CORNERS.
 4. IN CASE OF OBSTRUCTION REFER TO DETAIL BT-10.
 5. BONDING ADHESIVE REQUIRED BETWEEN MEMBRANE AND INSULATION FOR FULLY ADHERED SYSTEMS.

MAXIMUM WARRANTY: **20 YEARS**

Firestone
BUILDING PRODUCTS
NOBODY COVERS YOU BETTER.™
www.firestonebuildingproducts.com

BASE TIE-IN WITH 2" METAL PLATES FASTENED TO DECK

RUBBERGARD™ EPDM

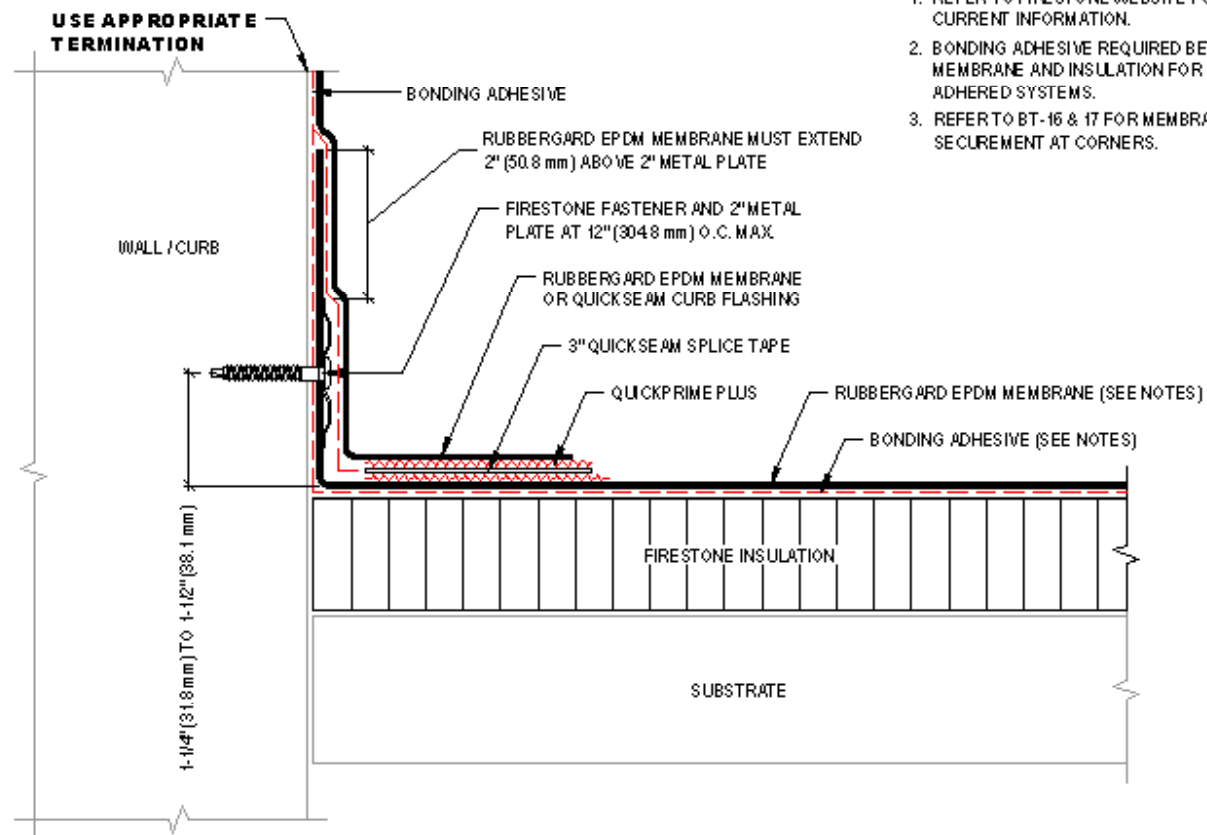
ACCEPTABLE SYSTEMS: ADHERED, RMA5

ISSUE / REVISION #
DATE:
1/1/2006
NOT TO SCALE

DETAIL NO.
BT-6



Details: Base Tie-In – 2" plates to wall/curb



NOTES:

1. REFER TO FIRESTONE WEBSITE FOR MOST CURRENT INFORMATION.
2. BONDING ADHESIVE REQUIRED BETWEEN MEMBRANE AND INSULATION FOR FULLY ADHERED SYSTEMS.
3. REFER TO BT-16 & 17 FOR MEMBRANE SECUREMENT AT CORNERS.

MAXIMUM WARRANTY: **20 YEARS**

Firestone
BUILDING PRODUCTS
NOBODY COVERS YOU BETTER.™
www.firestoneppco.com

BASE TIE-IN WITH 2" METAL PLATES FASTENED TO WALL/CURB

RUBBERGARD™ EPDM

ACCEPTABLE SYSTEMS: ADHERED, RMA5

ISSUE / REVISION
DATE:
1/1/2006

NOT TO SCALE

DETAIL NO.

BT-7



Details: Base Tie-In





Details: Base Tie-In





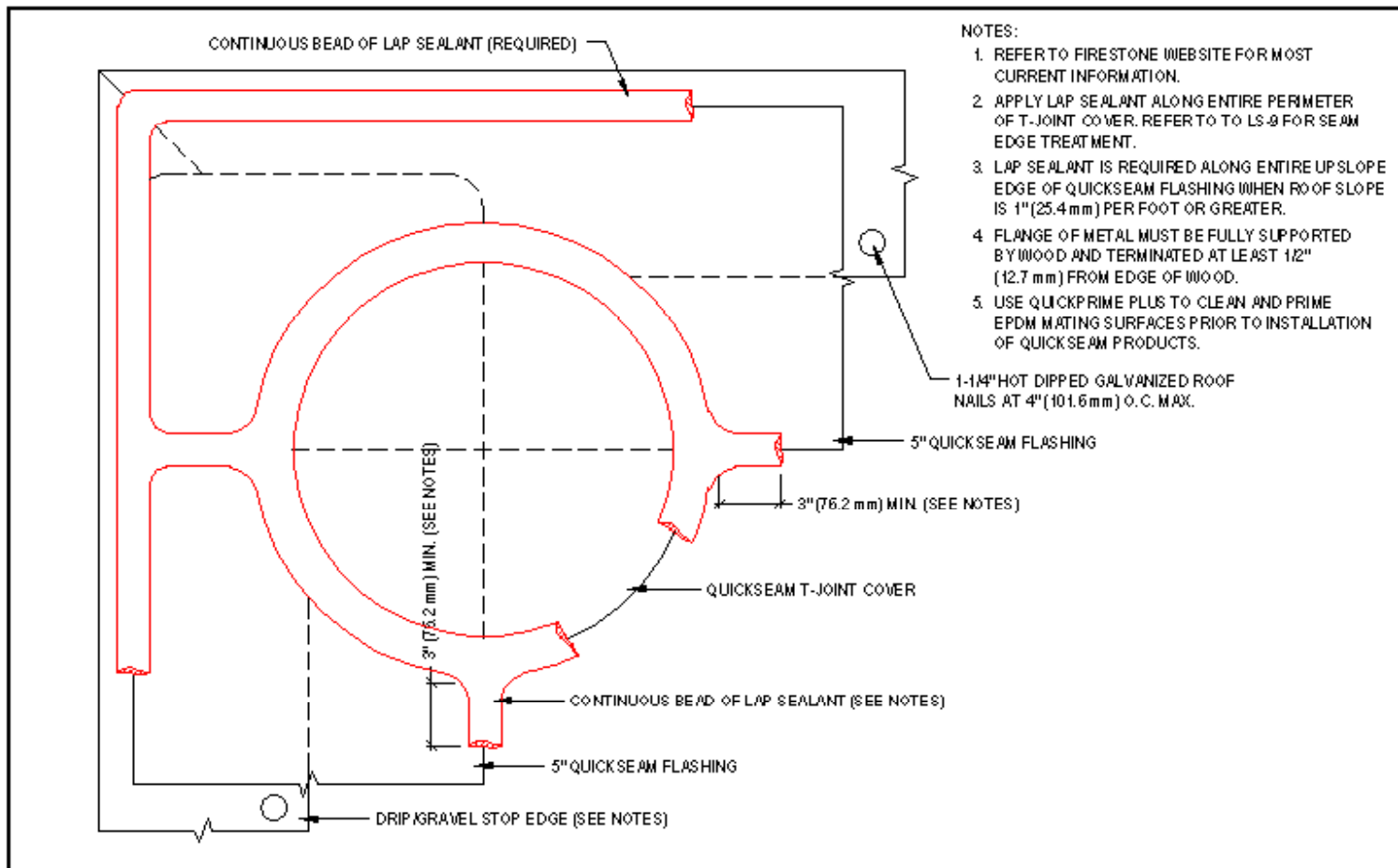
Base Tie-In Tips

- Base tie-in should have the proper fastening rate per roof design.
- Base tie-ins can be made to either the deck or into the approved adjacent vertical surface.
- Do not over-drive plates and fasteners.
- Be sure to prime all mating surfaces within the base tie-in.
- Use caution when rolling in the base tie-in areas.
- If a deck obstruction occurs, base tie-ins can be moved a maximum of 6" from the wall or parapet.





Details: Roof Edge Corner w/ T-Joint



MAXIMUM WARRANTY: **20 YEARS**

Firestone
BUILDING PRODUCTS
NOBODY COVERS YOU BETTER.™
www.firestonebuildingproducts.com

ROOF EDGE CORNER WITH QUICKSEAM FLASHING AND T-JOINT COVER

RUBBERGARD™ EPDM

ACCEPTABLE SYSTEMS: ALL

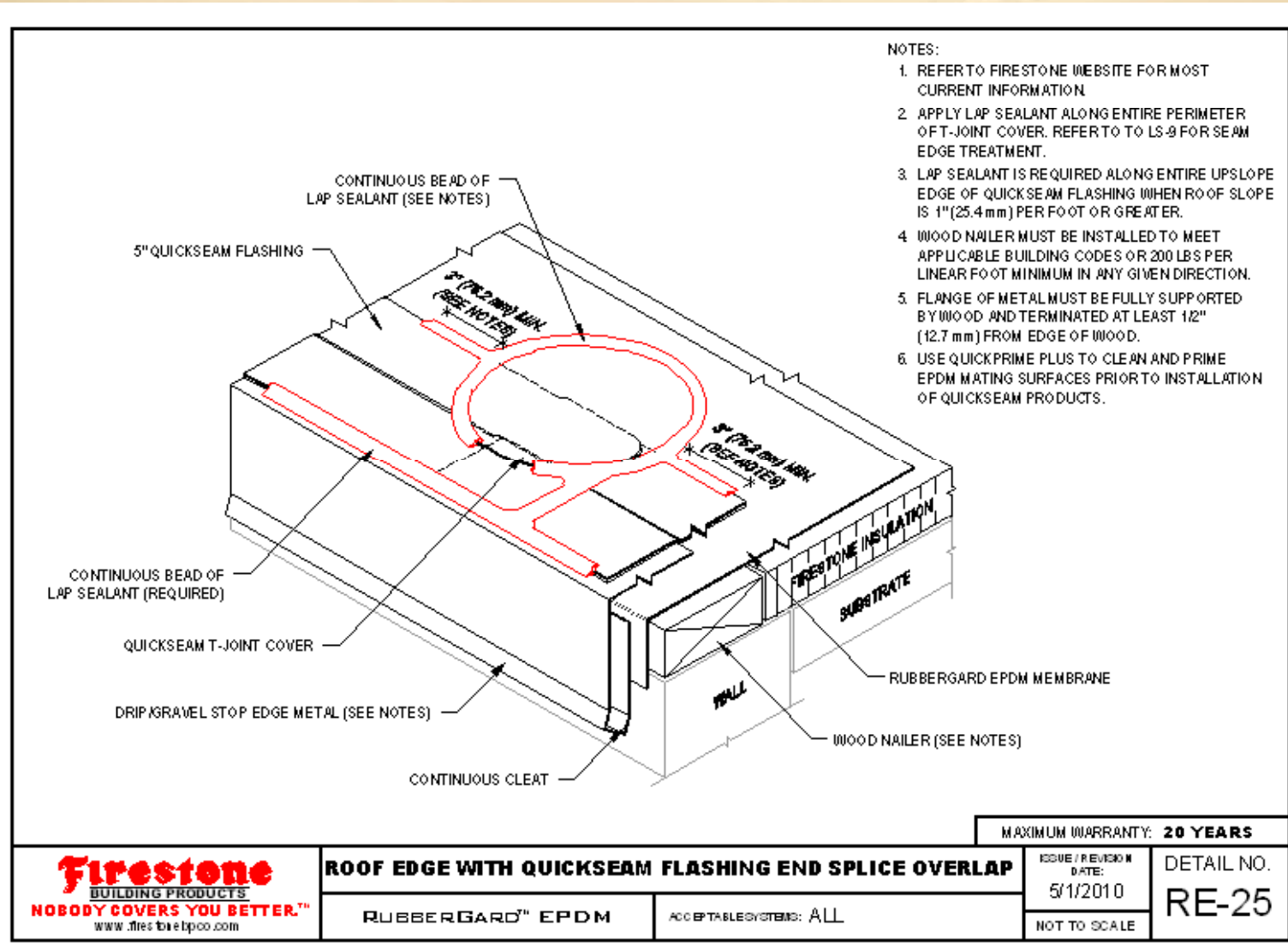
ISSUE / REVISION DATE
5/1/2010

NOT TO SCALE

DETAIL NO.
RE-26

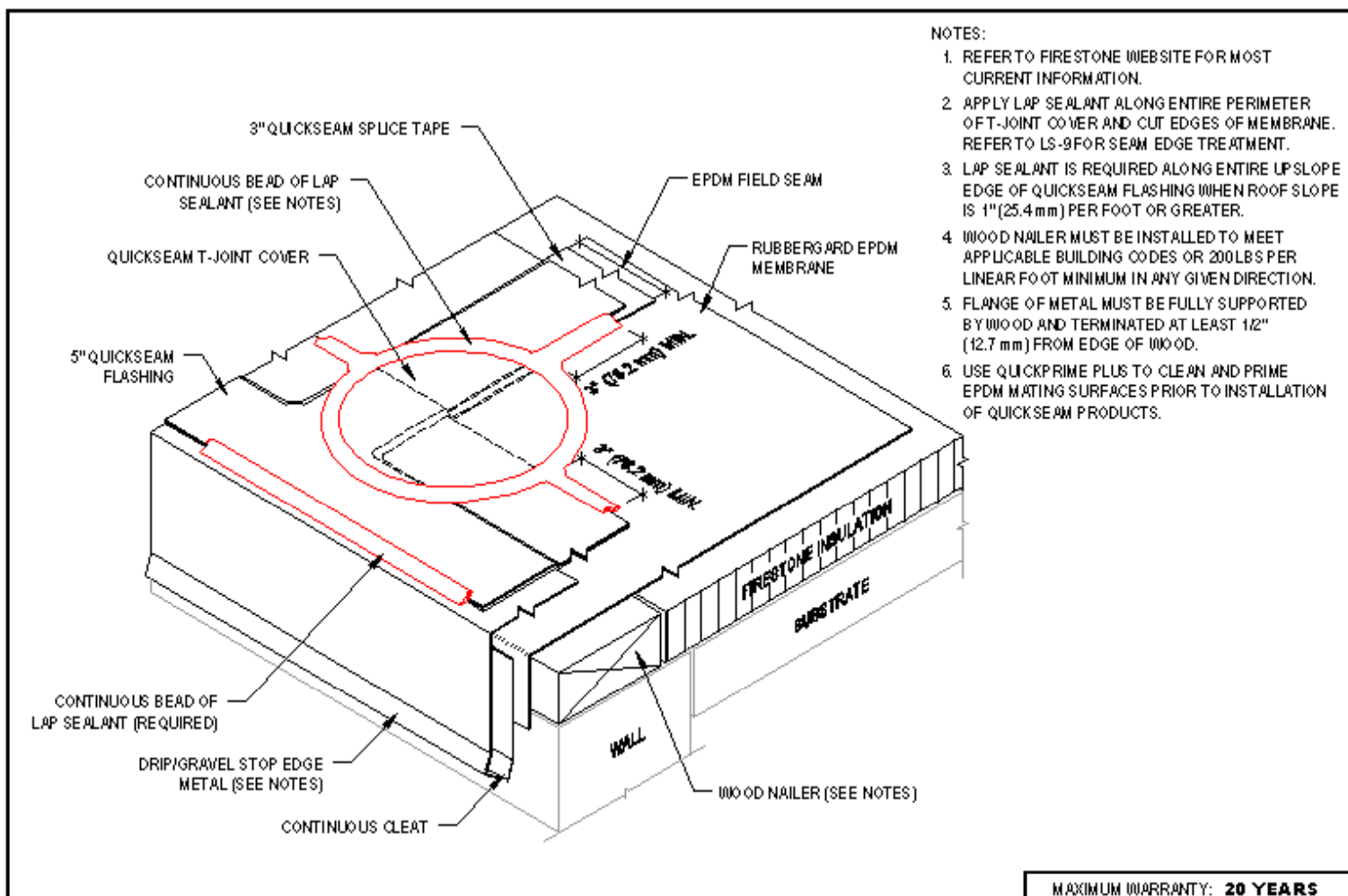


Details: Roof Edge w/ QS endlap splice overlap





Details: Roof Edge w/ Field Seam



	ROOF EDGE WITH QUICKSEAM FLASHING AT FIELD SEAM		MAXIMUM WARRANTY: 20 YEARS
	RUBBERGARD™ EPDM	ACCEPTABLE SYSTEMS: ALL	ISSUE / REVISION # DATE 5/1/2010
			DETAIL NO. RE-27
			NOT TO SCALE



Details: Roof Edge w/ Field Seam



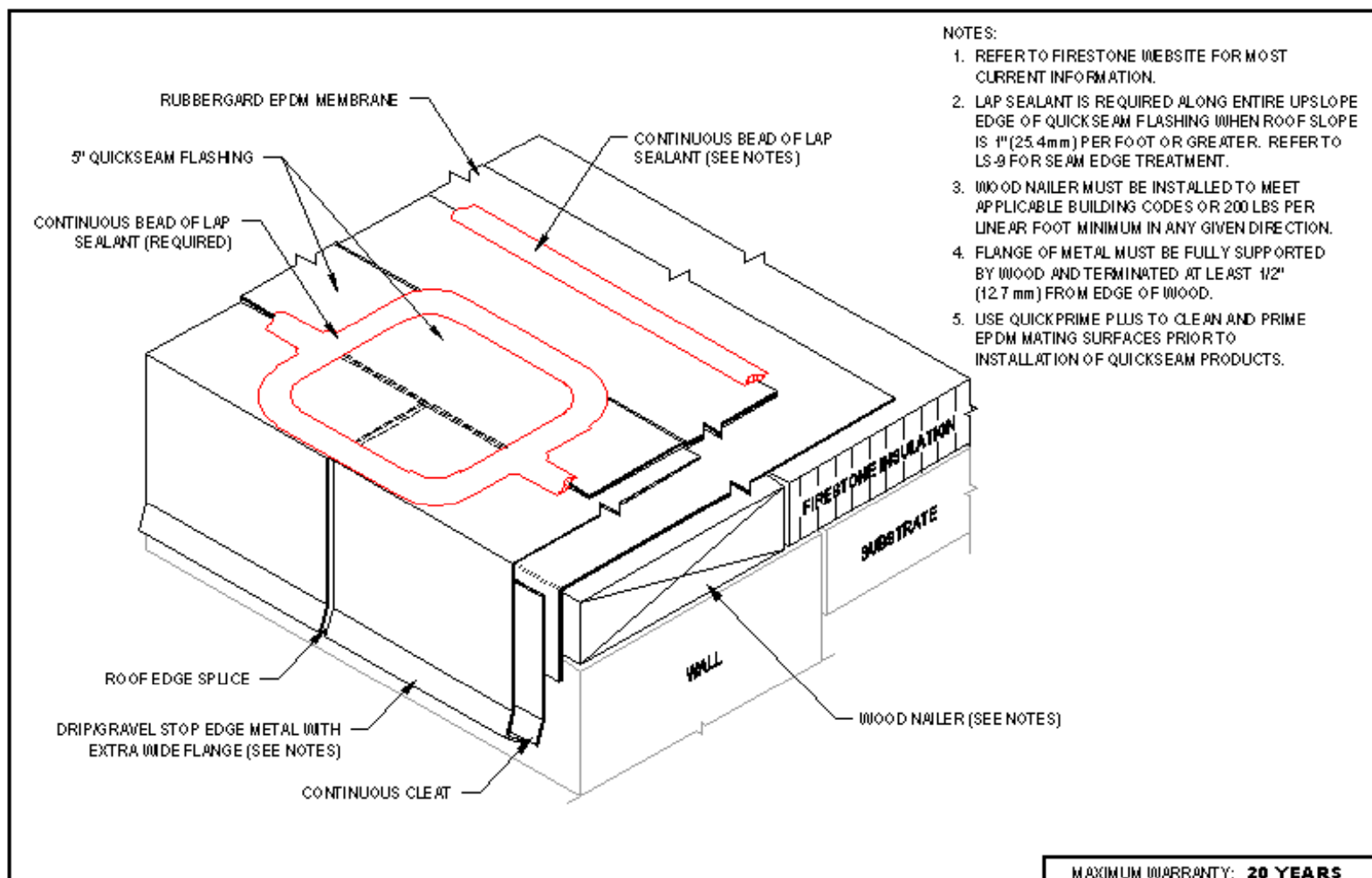


Details: Roof Edge w/ Field Seam





Details: Roof Edge Splice



Firestone
BUILDING PRODUCTS
NOBODY COVERS YOU BETTER.™
www.firestonebuildingproducts.com

ROOF EDGE SPLICE WITH QUICKSEAM FLASHING COVER

RUBBERGARD™ EPDM

ACCEPTABLE SYSTEMS: ALL

MAXIMUM WARRANTY: **20 YEARS**

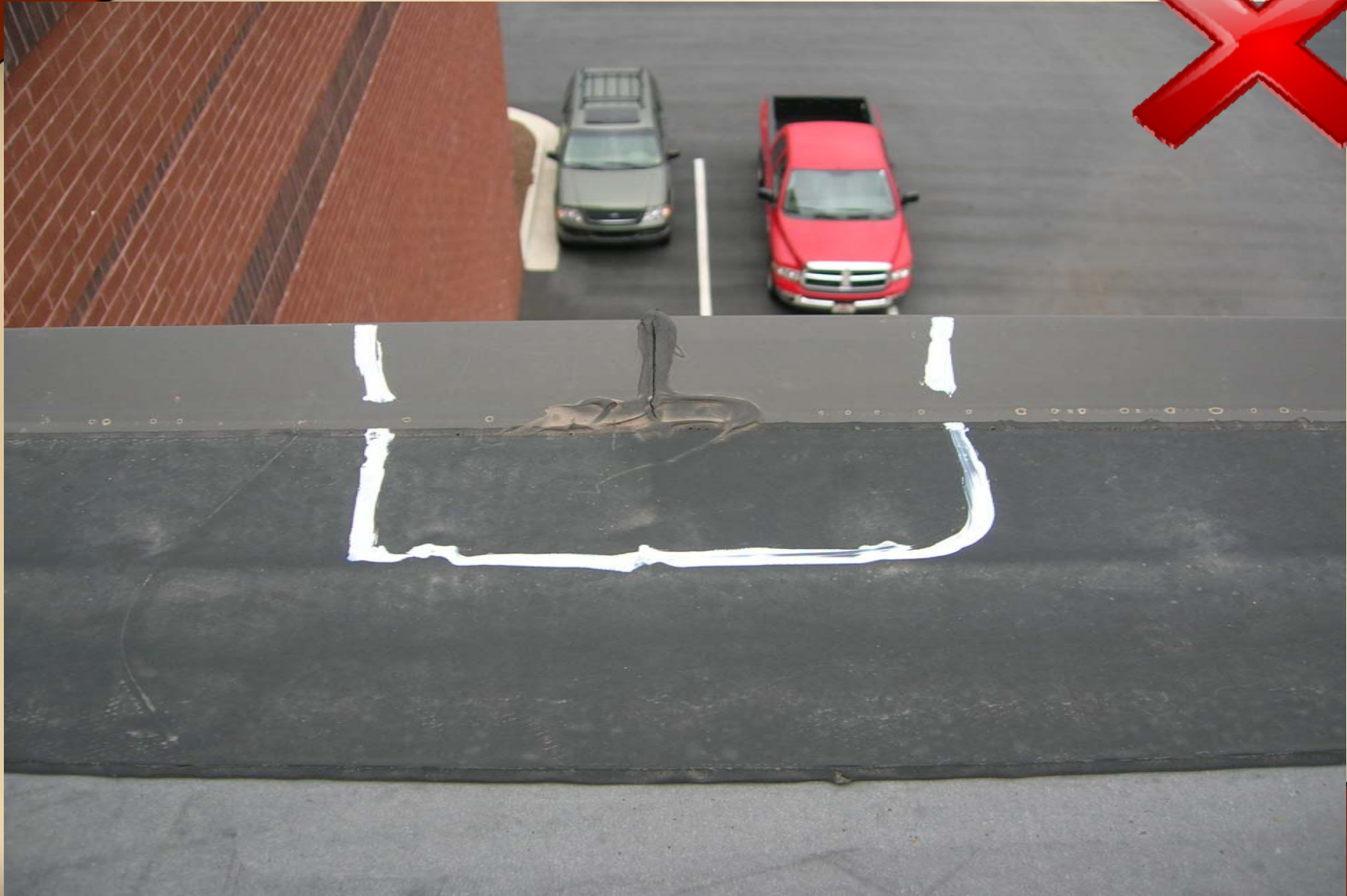
ISSUE / REVISION
DATE
5/1/2010

NOT TO SCALE

DETAIL NO.
RE-28



Details: Roof Edge Metal Splice





Roof Edge Tips

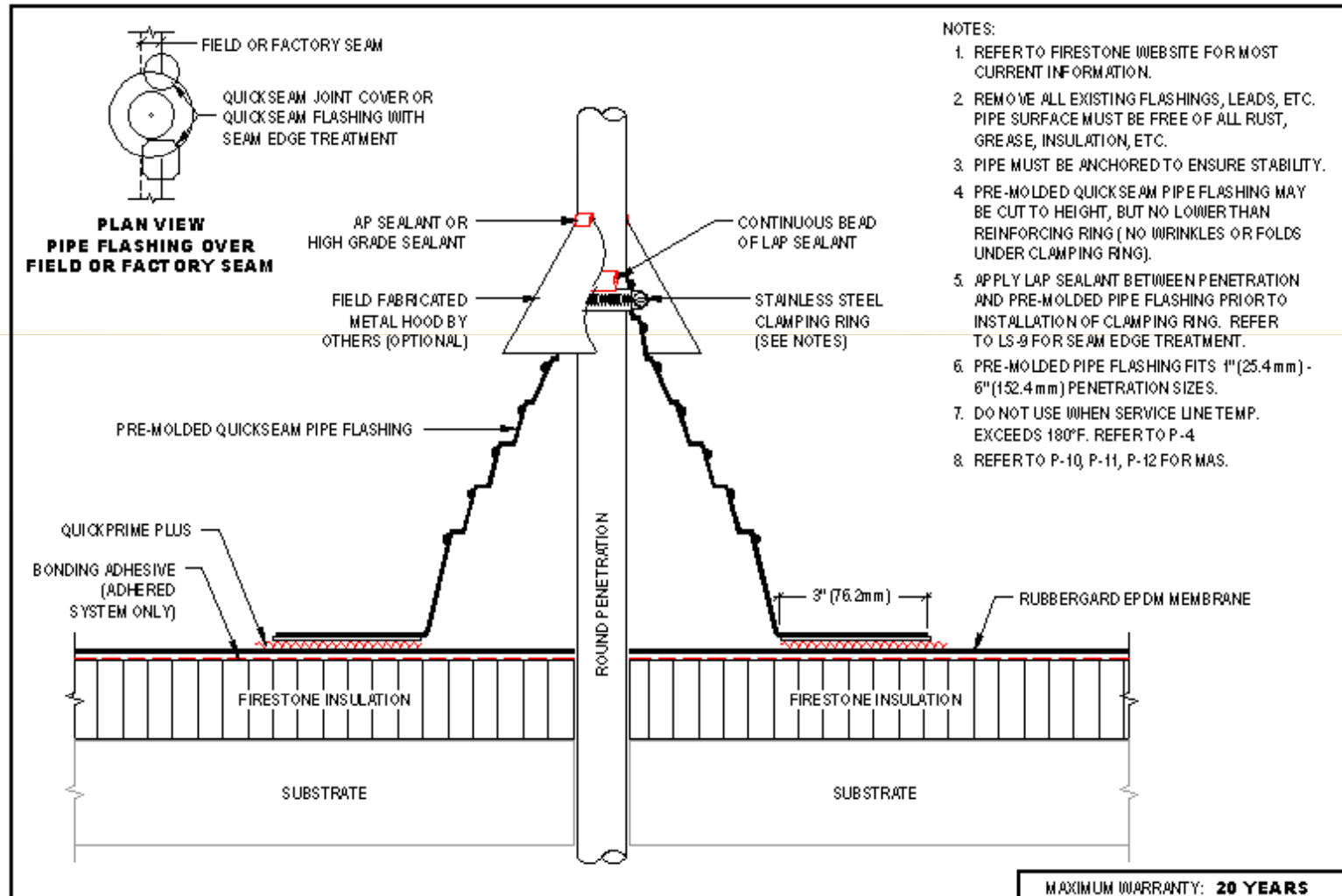
- Wood nailers must be installed to meet applicable building codes or 200lbs per linear foot minimum in any given direction.
- Metal flanges must be fully supported by wood and terminated at least ½” from the edge of the wood.
- Metal flanges covering the wood nailer must be fastened every 4” o.c.
- Lap sealant is required on the entire upslope edge of the QuickSeam Flashing.
- When stripping in the edge with 6” QuickSeam Flashing be sure to center the edge metal nails underneath the flashing.



Penetrations



Details: Penetrations - Pipe Boot



- NOTES:
1. REFER TO FIRESTONE WEBSITE FOR MOST CURRENT INFORMATION.
 2. REMOVE ALL EXISTING FLASHINGS, LEADS, ETC. PIPE SURFACE MUST BE FREE OF ALL RUST, GREASE, INSULATION, ETC.
 3. PIPE MUST BE ANCHORED TO ENSURE STABILITY.
 4. PRE-MOLDED QUICKSEAM PIPE FLASHING MAY BE CUT TO HEIGHT, BUT NO LOWER THAN REINFORCING RING (NO WRINKLES OR FOLDS UNDER CLAMPING RING).
 5. APPLY LAP SEALANT BETWEEN PENETRATION AND PRE-MOLDED PIPE FLASHING PRIOR TO INSTALLATION OF CLAMPING RING. REFER TO LS-9 FOR SEAM EDGE TREATMENT.
 6. PRE-MOLDED PIPE FLASHING FITS 1" (25.4mm) - 6" (152.4mm) PENETRATION SIZES.
 7. DO NOT USE WHEN SERVICE LINE TEMP. EXCEEDS 180°F. REFER TO P-4.
 8. REFER TO P-10, P-11, P-12 FOR MAS.

Firestone
 BUILDING PRODUCTS
 NOBODY COVERS YOU BETTER.™
 www.firestonebpco.com

PENETRATION WITH QUICKSEAM PIPE FLASHING

RUBBERGARD™ EPDM ACCEPTABLE SYSTEMS: ALL

MAXIMUM WARRANTY: **20 YEARS**

ISSUE / REVISION DATE: 1/1/2006

DETAIL NO. **P-1**

NOT TO SCALE



Details: Penetrations - Pipe Boot



Applied without primer.



Details: Penetrations - Pipe Boot



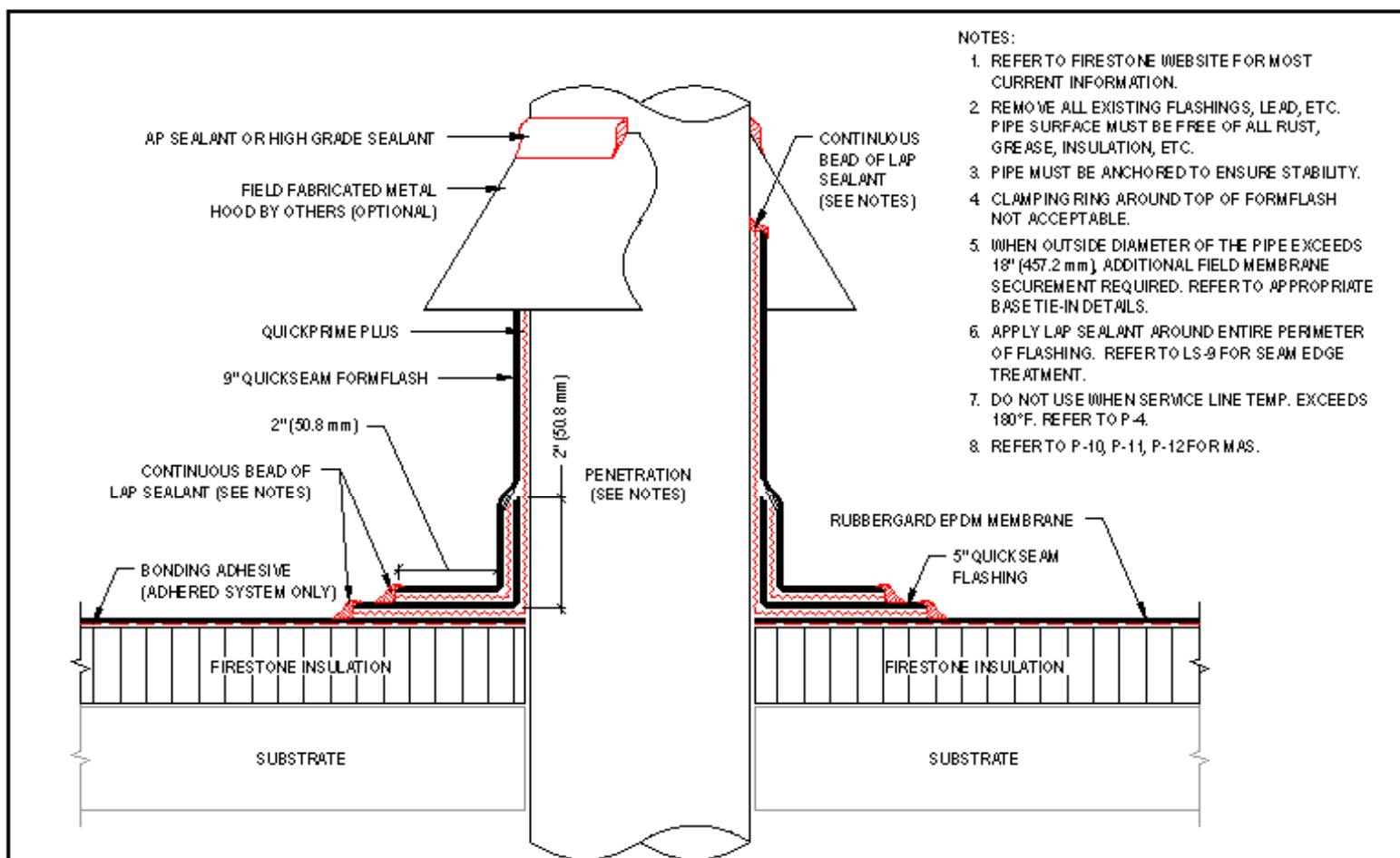


Pipe Boot Tips

- Allow primed surfaces to completely flash off before installing Firestone Quickseam Pipe Boot.
- Place pipe boot on application area and then peel away the release paper at a 45° angle.
- Roll the base of the pipe boot from the boot area out onto the deck.
- Do not over tighten the clamping ring.
- Apply Lap Sealant around to the top edge of the pipe boot.



Details: Penetrations – Field Fabricated Pipe



- NOTES:
1. REFER TO FIRESTONE WEBSITE FOR MOST CURRENT INFORMATION.
 2. REMOVE ALL EXISTING FLASHINGS, LEAD, ETC. PIPE SURFACE MUST BE FREE OF ALL RUST, GREASE, INSULATION, ETC.
 3. PIPE MUST BE ANCHORED TO ENSURE STABILITY.
 4. CLAMPING RING AROUND TOP OF FORMFLASH NOT ACCEPTABLE.
 5. WHEN OUTSIDE DIAMETER OF THE PIPE EXCEEDS 18" (457.2 mm), ADDITIONAL FIELD MEMBRANE SECUREMENT REQUIRED. REFER TO APPROPRIATE BASE TIE-IN DETAILS.
 6. APPLY LAP SEALANT AROUND ENTIRE PERIMETER OF FLASHING. REFER TO LS-9 FOR SEAM EDGE TREATMENT.
 7. DO NOT USE WHEN SERVICE LINE TEMP. EXCEEDS 180°F. REFER TO P-4.
 8. REFER TO P-10, P-11, P-12 FOR MAS.

MAXIMUM WARRANTY: **20 YEARS**

	PENETRATION WITH FIELD FABRICATED FLASHING		ISSUE / REVISION DATE: 1/1/2006	DETAIL NO. P-3
	RUBBERGARD™ EPDM	ACCEPTABLE SYSTEMS: ALL	NOT TO SCALE	



Details: Penetrations – Field Fab Pipe





Details: Penetrations – Field Fab Pipe



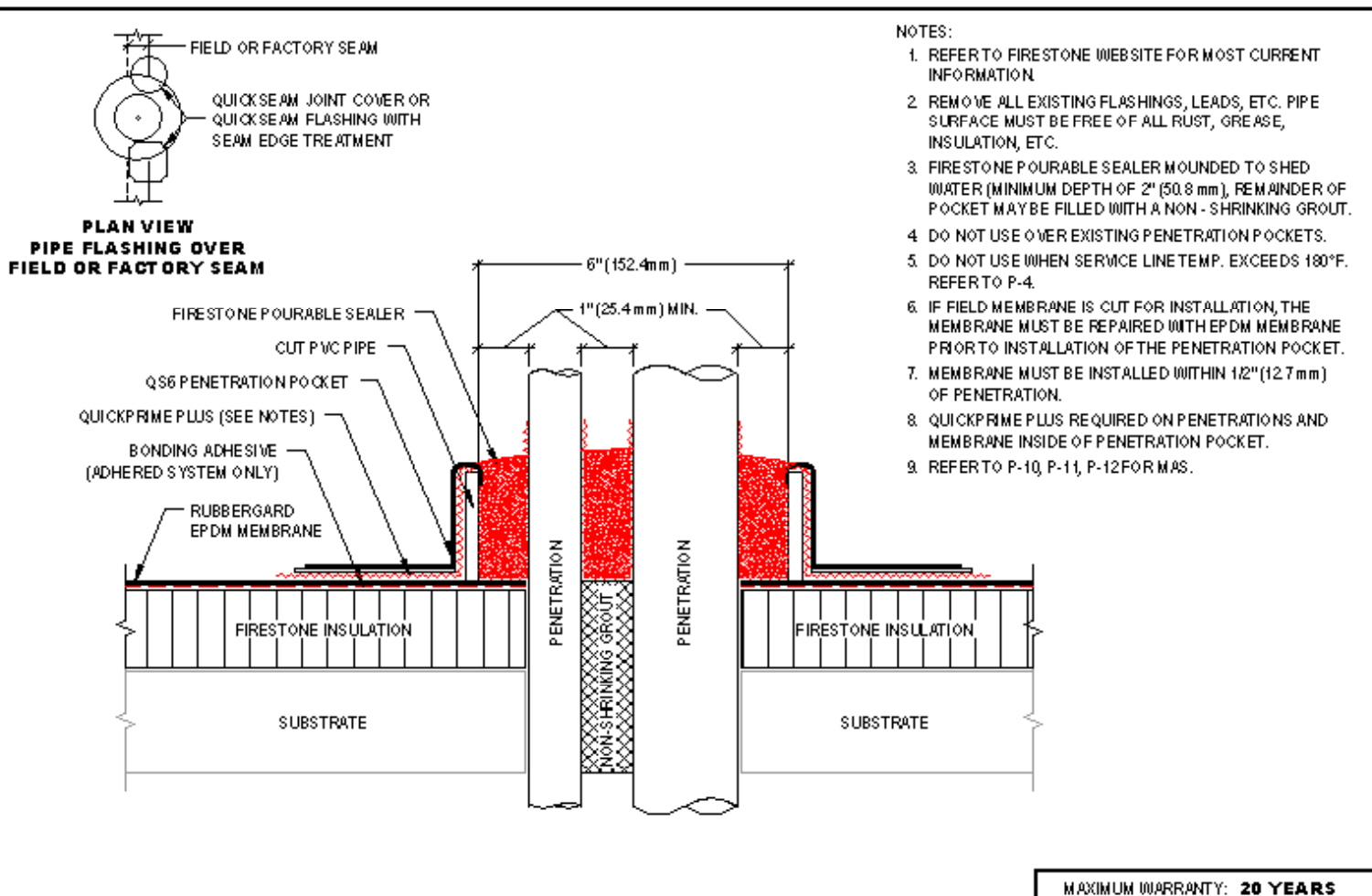


Field Fab Pipe Wrap Tips

- Be sure to prime all surfaces where QuickSeam products will be applied.
- Allow primed surfaces to completely flash off before installing Firestone QuickSeam Flashing.
- Apply flashing to vertical surfaces first, then work your way around the pipe.
- Do not over-stretch the flashing. Use the diamond pattern as an indicator.
- Roller apply everything from inside, outward to avoid air bubbles.
- NO clamping rings on QuickSeam products!



Details: Penetrations – Penetration Pocket



- NOTES:**
1. REFER TO FIRESTONE WEBSITE FOR MOST CURRENT INFORMATION.
 2. REMOVE ALL EXISTING FLASHINGS, LEADS, ETC. PIPE SURFACE MUST BE FREE OF ALL RUST, GREASE, INSULATION, ETC.
 3. FIRESTONE POURABLE SEALER MOUNTED TO SHED WATER (MINIMUM DEPTH OF 2" (50.8 mm), REMAINDER OF POCKET MAY BE FILLED WITH A NON-SHRINKING GROUT.
 4. DO NOT USE OVER EXISTING PENETRATION POCKETS.
 5. DO NOT USE WHEN SERVICE LINE TEMP. EXCEEDS 180°F. REFER TO P-4.
 6. IF FIELD MEMBRANE IS CUT FOR INSTALLATION, THE MEMBRANE MUST BE REPAIRED WITH EPDM MEMBRANE PRIOR TO INSTALLATION OF THE PENETRATION POCKET.
 7. MEMBRANE MUST BE INSTALLED WITHIN 1/2" (12.7mm) OF PENETRATION.
 8. QUICKPRIME PLUS REQUIRED ON PENETRATIONS AND MEMBRANE INSIDE OF PENETRATION POCKET.
 9. REFER TO P-10, P-11, P-12 FOR MAS.

MAXIMUM WARRANTY: **20 YEARS**

<p>Firestone BUILDING PRODUCTS NOBODY COVERS YOU BETTER.™ www.firestonebuildingproducts.com</p>	PENETRATION WITH QS6 PENETRATION POCKET		ISSUE / REVISION DATE: 1/1/2006	DETAIL NO. P-5
	RUBBERGARD™ EPDM	ACCEPTABLE SYSTEMS: ALL	NOT TO SCALE	



Details: Penetrations – Penetration Pocket





Details: Penetrations – Penetration Pocket





Penetration Pocket Tips

- Be sure to prime the penetration and the membrane inside the penetration pocket completely.
- Use tape around the top of the penetration pocket to keep the pourable sealer from flowing over the edges.
- Be sure that the pourable sealer mounds up in the middle of the penetration pocket to allow water to shed away.
- Roller apply everything from inside, outward to avoid air bubbles.
- There should be at least a 1" spacing between all penetrations going through the penetration pocket.



Corners



Details: Inside Corners

NOTES:

1. REFER TO FIRESTONE WEBSITE FOR MOST CURRENT INFORMATION.
2. APPLY LAP SEALANT ON CUT EDGES OF MEMBRANE AND PERIMETER OF QUICKSEAM FLASHINGS AS SHOWN. REFER TO LS-9 FOR SEAM EDGE TREATMENT.
3. USE QUICKPRIME PLUS TO CLEAN AND PRIME EPDM MATING SURFACES PRIOR TO INSTALLATION OF QUICKSEAM PRODUCTS.

MAXIMUM WARRANTY: 20 YEARS

<p>Firestone BUILDING PRODUCTS NOBODY COVERS YOU BETTER.™ www.firestonebpco.com</p>	INSIDE CORNER WITH 3" FLAP AND QUICKSEAM SPLICE TAPE INSTALLATION STEPS		ISSUE/REVISION DATE: 1/1/2006	DETAIL NO. C-4a
	RUBBERGARD™ EPDM	ACCEPTABLE SYSTEMS: ALL	NOT TO SCALE	



Details: Inside Corners



No Lap Sealant



Details: Inside Corners



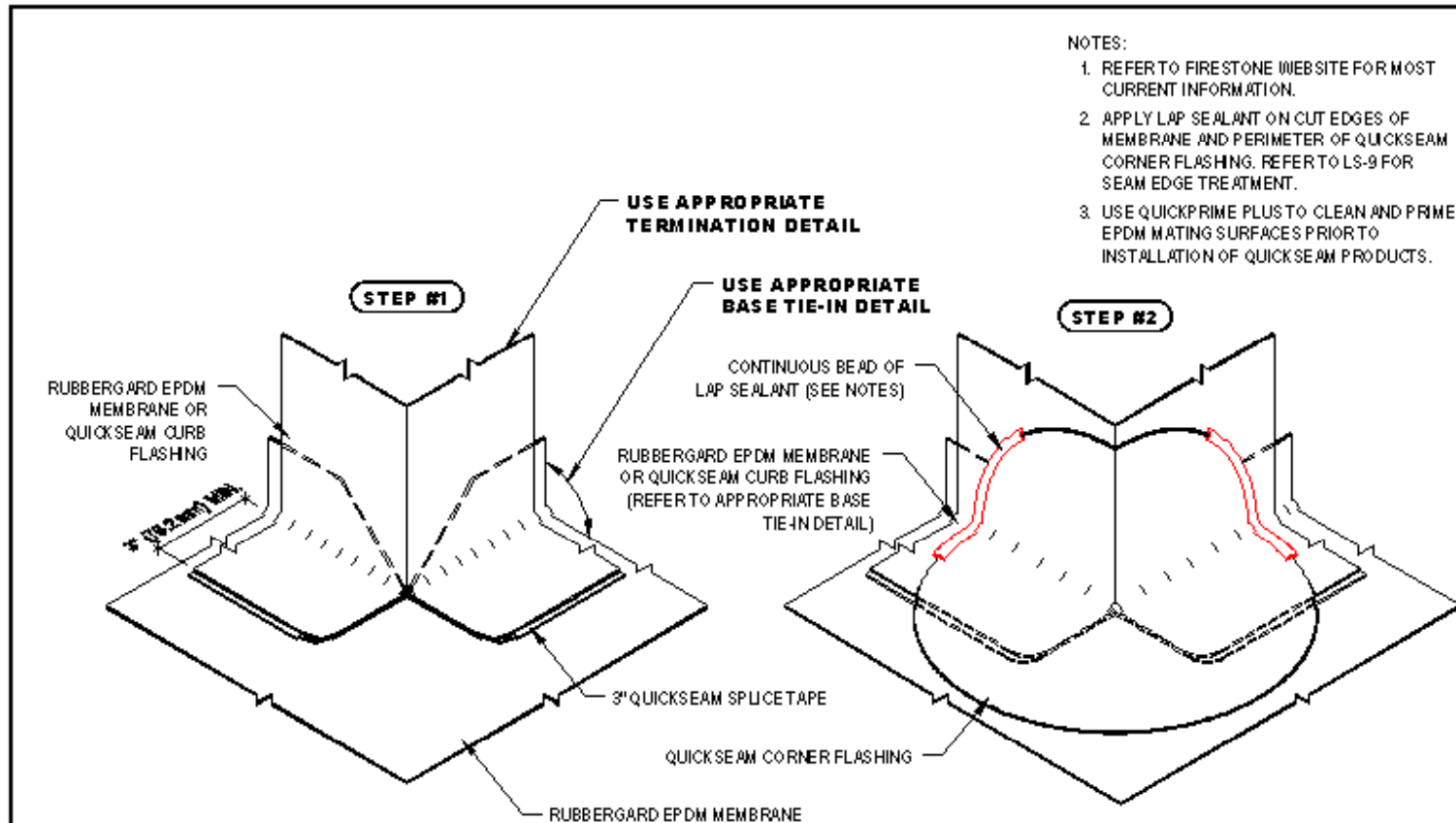


Inside Corner Tips

- Allow primed surfaces to completely flash off before installing Firestone QuickSeam Corner Flashing.
- Work the corner flashing from the transition areas to the horizontal and vertical surfaces.
- Do not over-stretch the flashing. Use the diamond pattern as an indicator.
- Install the corner flashing so that the overlap (pigs ear) is up on the vertical surface.
- Be sure to prime the overlapping areas.
- 5" QuickSeam cover strip should be installed from the corner outward.
- Roller apply everything from inside, outward to avoid air bubbles.



Details: Outside Corners



NOTES:

1. REFER TO FIRESTONE WEBSITE FOR MOST CURRENT INFORMATION.
2. APPLY LAP SEALANT ON CUT EDGES OF MEMBRANE AND PERIMETER OF QUICKSEAM CORNER FLASHING. REFER TO LS-9 FOR SEAM EDGE TREATMENT.
3. USE QUICKPRIME PLUS TO CLEAN AND PRIME EPDM MATING SURFACES PRIOR TO INSTALLATION OF QUICKSEAM PRODUCTS.

MAXIMUM WARRANTY: **20 YEARS**

Firestone
BUILDING PRODUCTS
NOBODY COVERS YOU BETTER.™
www.firestonebpco.com

**OUTSIDE CORNER WITH QUICKSEAM CORNER FLASHING
INSTALLATION STEPS**

RUBBERGARD™ EPDM

ACCEPTABLE SYSTEMS: ALL

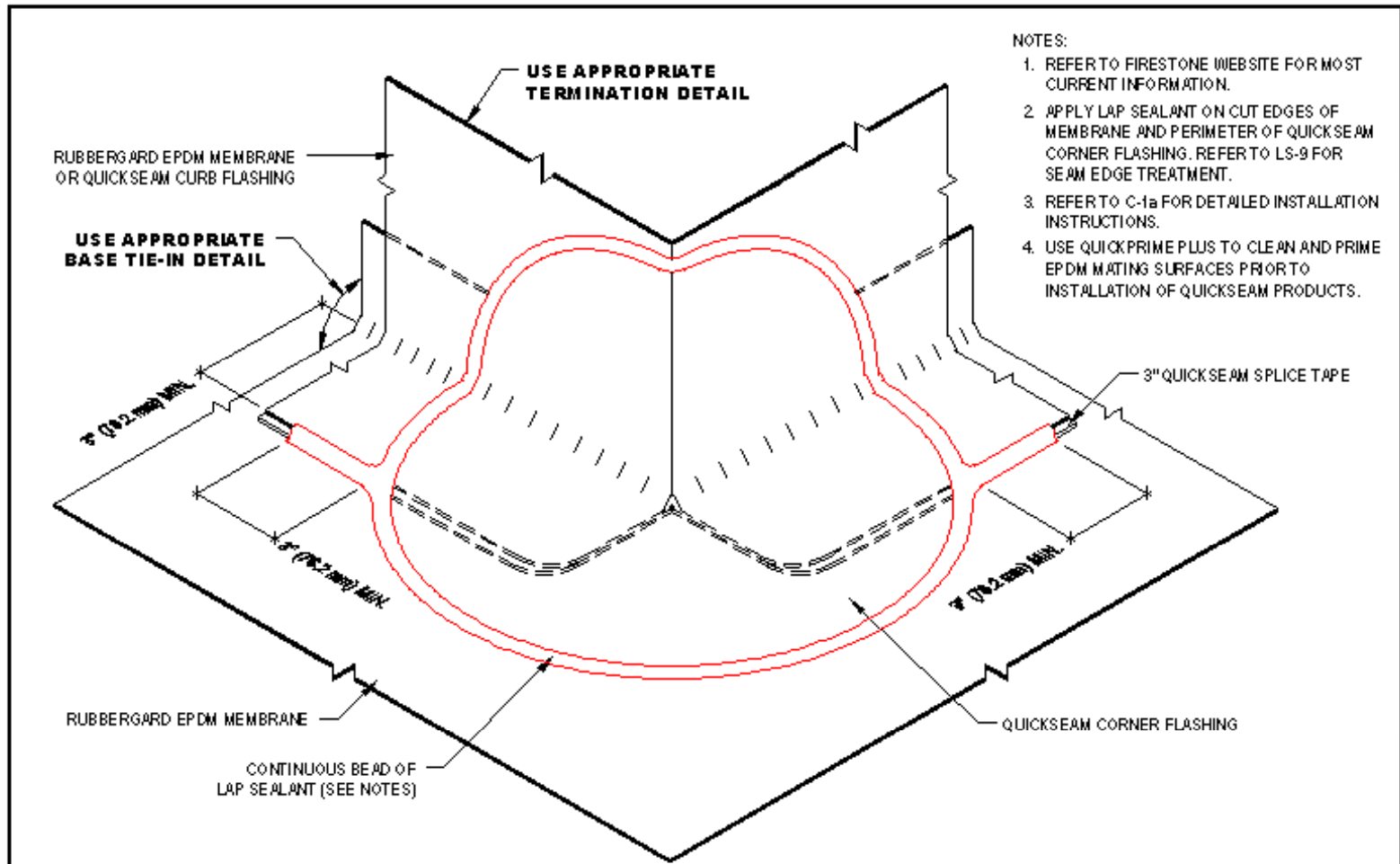
ISSUE / REVISION
DATE:
1/1/2006

NOT TO SCALE

DETAIL NO.
C-1a



Details: Outside Corners



MAXIMUM WARRANTY: **20 YEARS**

Firestone
BUILDING PRODUCTS
NOBODY COVERS YOU BETTER.™
www.firestonetire.com

OUTSIDE CORNER WITH QUICKSEAM CORNER FLASHING

RUBBERGARD™ EPDM ACCEPTABLE SYSTEMS: ALL

ISSUE / REVISION #
DATE:
1/1/2006
NOT TO SCALE

DETAIL NO.
C-1



Details: Outside Corners





Details: Outside Corners





Outside Corner Tips

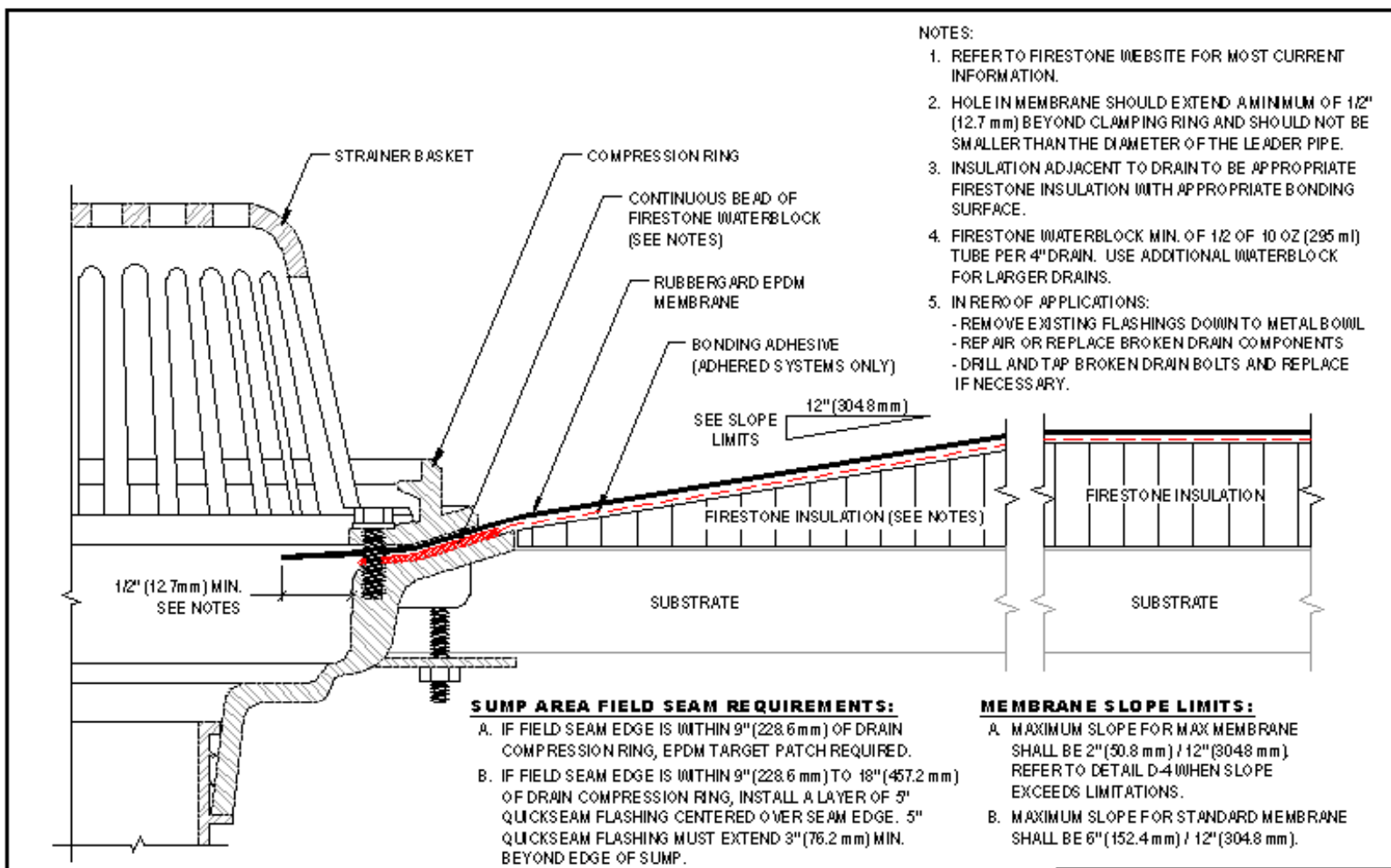
- Allow primed surfaces to completely flash off before installing Firestone QuickSeam Corner Flashing.
- Apply vertical surface flashing first, then work the flashing onto the horizontal surface.
- Do not over stretch the flashing. Use the diamond pattern is an indicator.
- Roller apply everything from inside, outward to avoid air bubbles.



Drains and Scuppers



Details: Roof Drain



- NOTES:**
1. REFER TO FIRESTONE WEBSITE FOR MOST CURRENT INFORMATION.
 2. HOLE IN MEMBRANE SHOULD EXTEND A MINIMUM OF 1/2" (12.7 mm) BEYOND CLAMPING RING AND SHOULD NOT BE SMALLER THAN THE DIAMETER OF THE LEADER PIPE.
 3. INSULATION ADJACENT TO DRAIN TO BE APPROPRIATE FIRESTONE INSULATION WITH APPROPRIATE BONDING SURFACE.
 4. FIRESTONE WATERBLOCK MIN. OF 1/2 OF 10 OZ (295 ml) TUBE PER 4" DRAIN. USE ADDITIONAL WATERBLOCK FOR LARGER DRAINS.
 5. IN REVO OF APPLICATIONS:
 - REMOVE EXISTING FLASHINGS DOWN TO METAL BOWL
 - REPAIR OR REPLACE BROKEN DRAIN COMPONENTS
 - DRILL AND TAP BROKEN DRAIN BOLTS AND REPLACE IF NECESSARY.

- SUMP AREA FIELD SEAM REQUIREMENTS:**
- A. IF FIELD SEAM EDGE IS WITHIN 9" (228.6 mm) OF DRAIN COMPRESSION RING, EPDM TARGET PATCH REQUIRED.
 - B. IF FIELD SEAM EDGE IS WITHIN 9" (228.6 mm) TO 18" (457.2 mm) OF DRAIN COMPRESSION RING, INSTALL A LAYER OF 5" QUICKSEAM FLASHING CENTERED OVER SEAM EDGE. 5" QUICKSEAM FLASHING MUST EXTEND 3" (76.2 mm) MIN. BEYOND EDGE OF SUMP.

- MEMBRANE SLOPE LIMITS:**
- A. MAXIMUM SLOPE FOR MAX MEMBRANE SHALL BE 2" (50.8 mm) / 12" (3048 mm). REFER TO DETAIL D-4 WHEN SLOPE EXCEEDS LIMITATIONS.
 - B. MAXIMUM SLOPE FOR STANDARD MEMBRANE SHALL BE 6" (152.4 mm) / 12" (304.8 mm).

MAXIMUM WARRANTY: **20 YEARS**

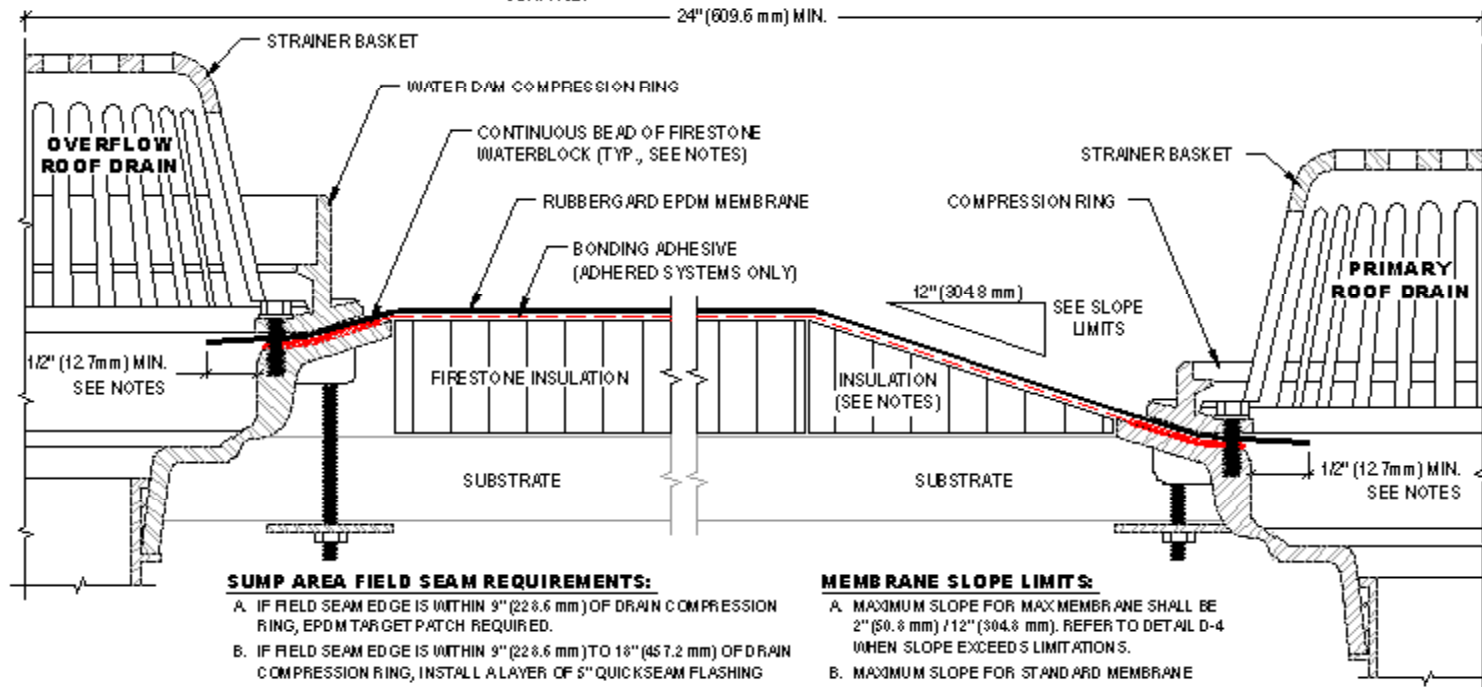
<p>Firestone BUILDING PRODUCTS NOBODY COVERS YOU BETTER.™ www.firestonebuildingproducts.com</p>	ROOF DRAIN		ISSUE / REVISION DATE: 1/1/2006	DETAIL NO. D-1
	RUBBERGARD™ EPDM	ACCEPTABLE SYSTEMS: ALL	NOT TO SCALE	



Details: Roof Drain with Overflow Roof Drain

NOTES:

1. REFER TO FIRESTONE WEBSITE FOR MOST CURRENT INFORMATION.
2. HOLE IN MEMBRANE SHOULD EXTEND A MINIMUM OF 1/2" (12.7 mm) BEYOND CLAMPING RING AND SHOULD NOT BE SMALLER THAN THE DIAMETER OF THE LEADER PIPE.
3. INSULATION ADJACENT TO DRAIN TO BE APPROPRIATE FIRESTONE INSULATION WITH APPROPRIATE BONDING SURFACE.
4. FIRESTONE WATERBLOCK MIN. OF 1/2 OF 10 OZ (295 ml) TUBE PER 4" DRAIN. USE ADDITIONAL WATERBLOCK FOR LARGER DRAINS.
5. IN REPAIR APPLICATIONS:
 - REMOVE EXISTING FLASHINGS DOWN TO METAL BOWL
 - REPAIR OR REPLACE BROKEN DRAIN COMPONENTS
 - DRILL AND TAP BROKEN DRAIN BOLTS AND REPLACE IF NECESSARY.



SUMP AREA FIELD SEAM REQUIREMENTS:

- A. IF FIELD SEAM EDGE IS WITHIN 9" (228.6 mm) OF DRAIN COMPRESSION RING, EPDM TARGET PATCH REQUIRED.
- B. IF FIELD SEAM EDGE IS WITHIN 9" (228.6 mm) TO 18" (457.2 mm) OF DRAIN COMPRESSION RING, INSTALL A LAYER OF 5" QUICKSEAM FLASHING CENTERED OVER SEAM EDGE. 5" QUICKSEAM FLASHING MUST EXTEND 3" (76.2 mm) MIN. BEYOND EDGE OF SUMP.

MEMBRANE SLOPE LIMITS:

- A. MAXIMUM SLOPE FOR MAX MEMBRANE SHALL BE 2" (50.8 mm) / 12" (304.8 mm). REFER TO DETAIL D-4 WHEN SLOPE EXCEEDS LIMITATIONS.
- B. MAXIMUM SLOPE FOR STANDARD MEMBRANE SHALL BE 6" (152.4 mm) / 12" (304.8 mm).

MAXIMUM WARRANTY: **20 YEARS**

Firestone
BUILDING PRODUCTS
NOBODY COVERS YOU BETTER.™
www.firestonebuildingproducts.com

ROOF DRAIN WITH OVERFLOW ROOF DRAIN

RUBBERGARD™ EPDM

ACCEPTABLE SYSTEMS: ALL

ISSUE / REVISION
DATE:
1/1/2006

NOT TO SCALE

DETAIL NO.
D-5

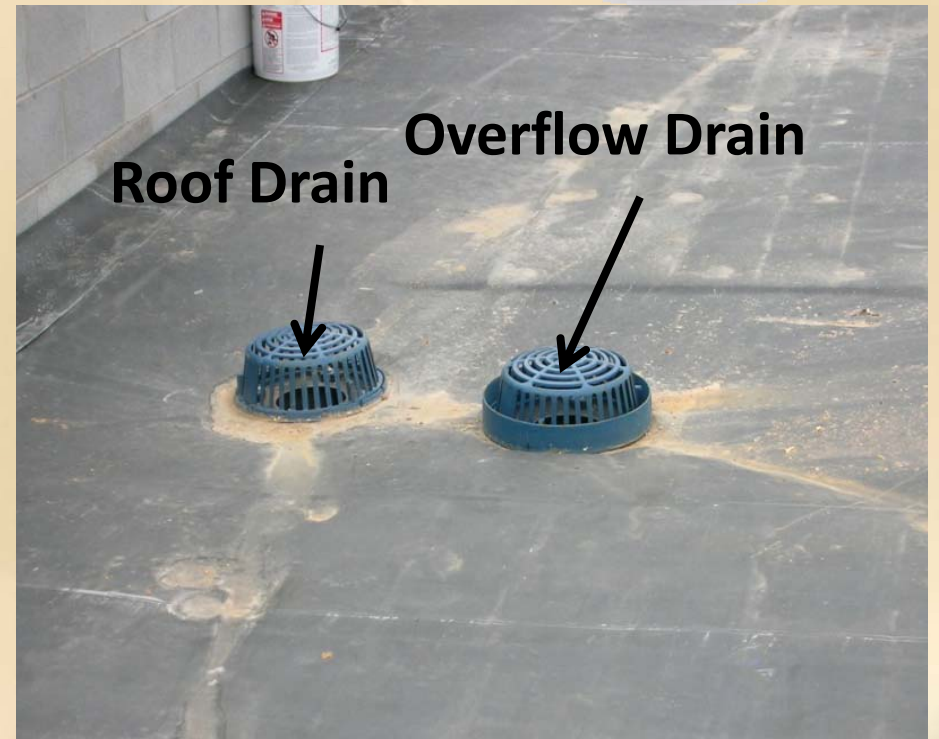


Details: Roof Drain





Details: Roof Drain



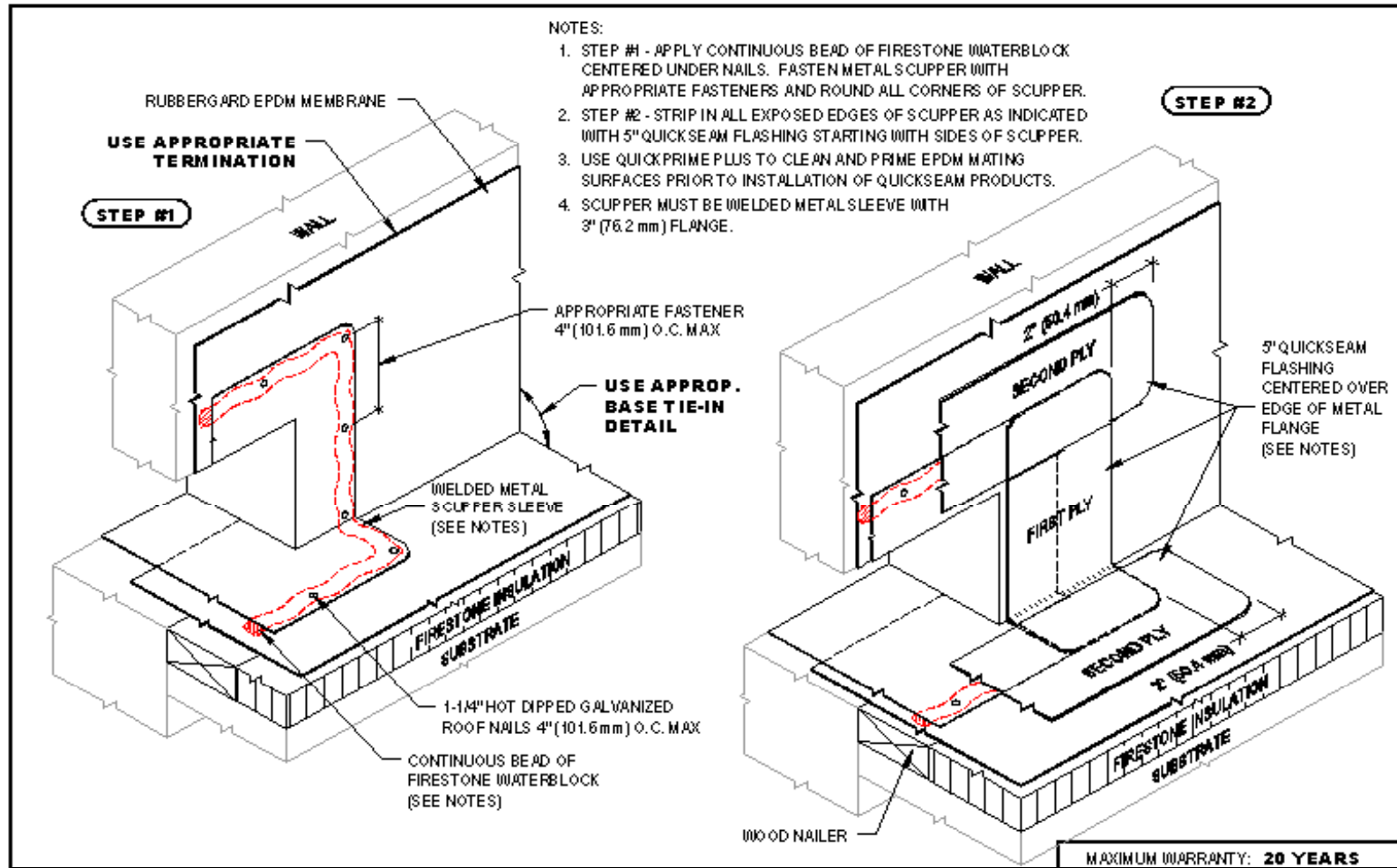


Roof Drain Tips

- All drain bolts must be in place and tight.
- Firestone Waterblock must be present between the base of the drain and the membrane. Rule of Thumb: 1 tube per drain.
- Slope should not exceed 6/12 for standard Rubbergard EPDM, and 2/12 for Rubbergard MAX EPDM.
- Field seams within 9" require a target patch.
- Field seams within 9"-18" must be stripped in with Firestone 5' QuickSeam Flashing.
- Hole in membrane should extend a minimum of ½" beyond the clamping ring and should not be smaller than the diameter of the drain pipe.



Details: Scuppers – Steps 1 & 2



Firestone
BUILDING PRODUCTS
NOBODY COVERS YOU BETTER.™
www.firestonebuildingproducts.com

**THRU-WALL SCUPPER (WELDED SLEEVE)
INSTALLATION STEPS 1 & 2**

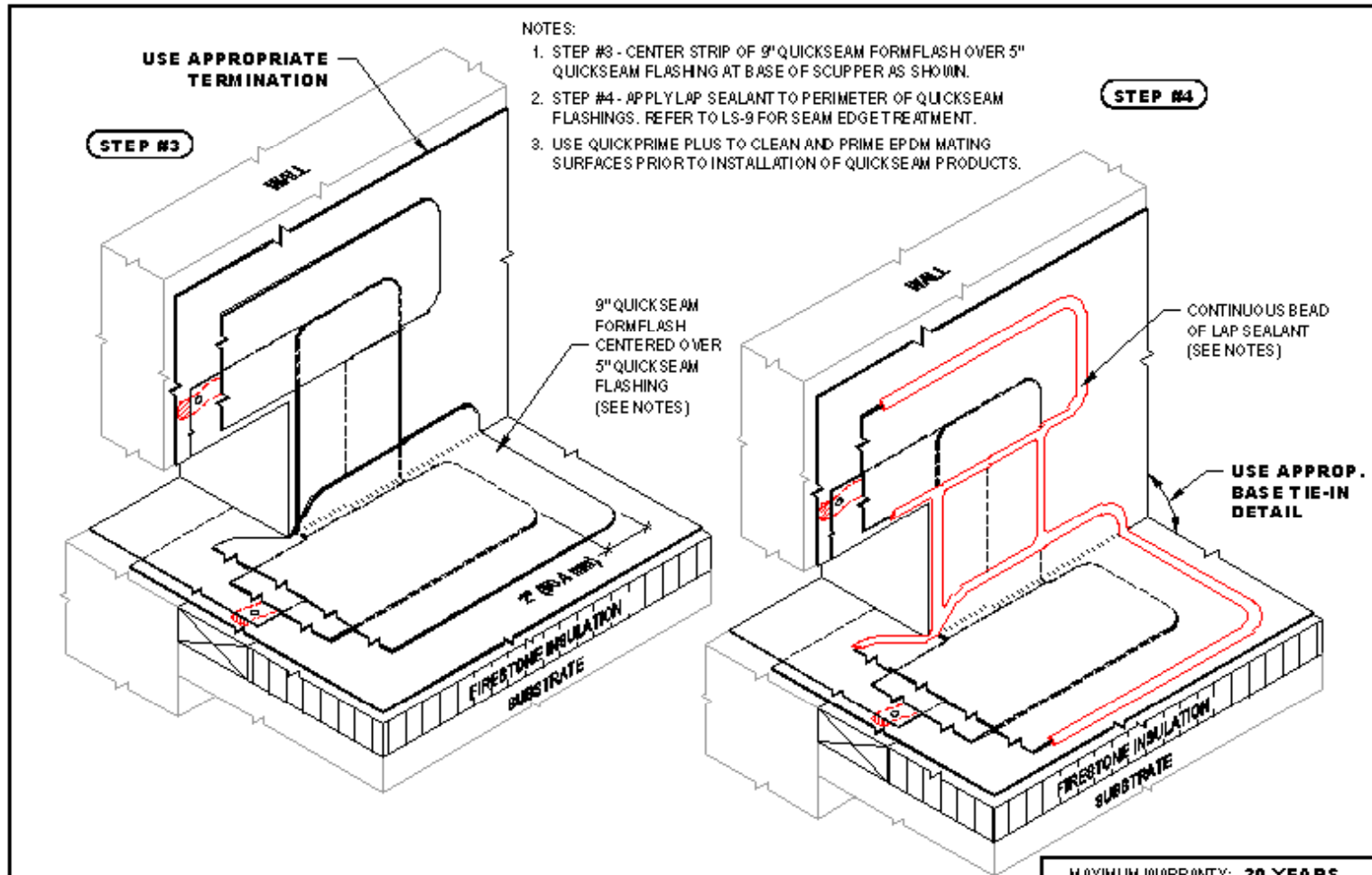
RUBBERGUARD™ EPDM ACCESSORIES: ALL

ISSUE / REVISION DATE:
1/1/2006
NOT TO SCALE

DETAIL NO.
S-1a



Details: Scuppers – Steps 3 & 4



NOTES:

1. STEP #3 - CENTER STRIP OF 9" QUICKSEAM FORMFLASH OVER 5" QUICKSEAM FLASHING AT BASE OF SCUPPER AS SHOWN.
2. STEP #4 - APPLY LAP SEALANT TO PERIMETER OF QUICKSEAM FLASHINGS. REFER TO LS-9 FOR SEAM EDGE TREATMENT.
3. USE QUICKPRIME PLUS TO CLEAN AND PRIME EPDM MATING SURFACES PRIOR TO INSTALLATION OF QUICKSEAM PRODUCTS.

Firestone
BUILDING PRODUCTS
NOBODY COVERS YOU BETTER.™
www.firestonebuildingproducts.com

**THRU-WALL SCUPPER (WELDED SLEEVE)
INSTALLATION STEPS 3 & 4**

RUBBERGARD™ EPDM

ACCEPTABLE SYSTEMS: ALL

MAXIMUM WARRANTY: 20 YEARS

ISSUE / REVISION
DATE:
1/1/2006

DETAIL NO.

S-1b

NOT TO SCALE



Details: Scuppers



No flashing present



Details: Scuppers





Scupper Tips

- Use primer to clean and prime all surfaces where all QuickSeam products will be applied.
- Apply Firestone Waterblock centered under the nail holes before nailing the metal sleeve down.
- Roller apply all QuickSeam products from the inside, outward to avoid air bubbles.
- Apply Lap Sealant as required.



Termination and Miscellaneous



Details: Termination – Term Bar

**WALL / CURB
(MASONRY /
CONCRETE
SUBSTRATE
ONLY)**

CONTINUOUS BEAD OF AP SEALANT

APPROPRIATE FIRESTONE FASTENER 12" (304.8 mm) O.C. MAX

FIRESTONE TERMINATION BAR (SEE NOTES)

CONTINUOUS BEAD OF FIRESTONE WATERBLOCK

RUBBERGARD EPDM MEMBRANE

BONDING ADHESIVE

USE APPROPRIATE BASE TIE-IN

MASONRY AND CONCRETE WALLS / CURBS MUST BE WATERPROOFED AND MAINTAINED IN ORDER FOR ANY SURFACE MOUNTED TERMINATION TO BE EFFECTIVE.

NOTES:

1. REFER TO FIRESTONE WEBSITE FOR MOST CURRENT INFORMATION.
2. INSTALL FIRESTONE TERMINATION BAR WITH 1/4" (6.4 mm) GAP BETWEEN ADJOINING SECTIONS.
3. TERMINATION BAR MUST BE CUT AT INSIDE AND OUTSIDE CORNERS. **DO NOT BEND AROUND CORNERS.**
4. TERMINATION BAR MUST BE FASTENED WITHIN 1" (25.4 mm) MAX. OF ALL SECTION ENDS.

MAXIMUM WARRANTY: **20 YEARS**

Firestone BUILDING PRODUCTS NOBODY COVERS YOU BETTER.™ www.firestonebp.com	TERMINATION WITH TERMINATION BAR		ISSUE / REVISION DATE: 1/1/2006	DETAIL NO. T-1
	RUBBERGARD™ EPDM	ACCEPTABLE SYSTEMS: ALL	NOT TO SCALE	



Details: Termination – Term Bar



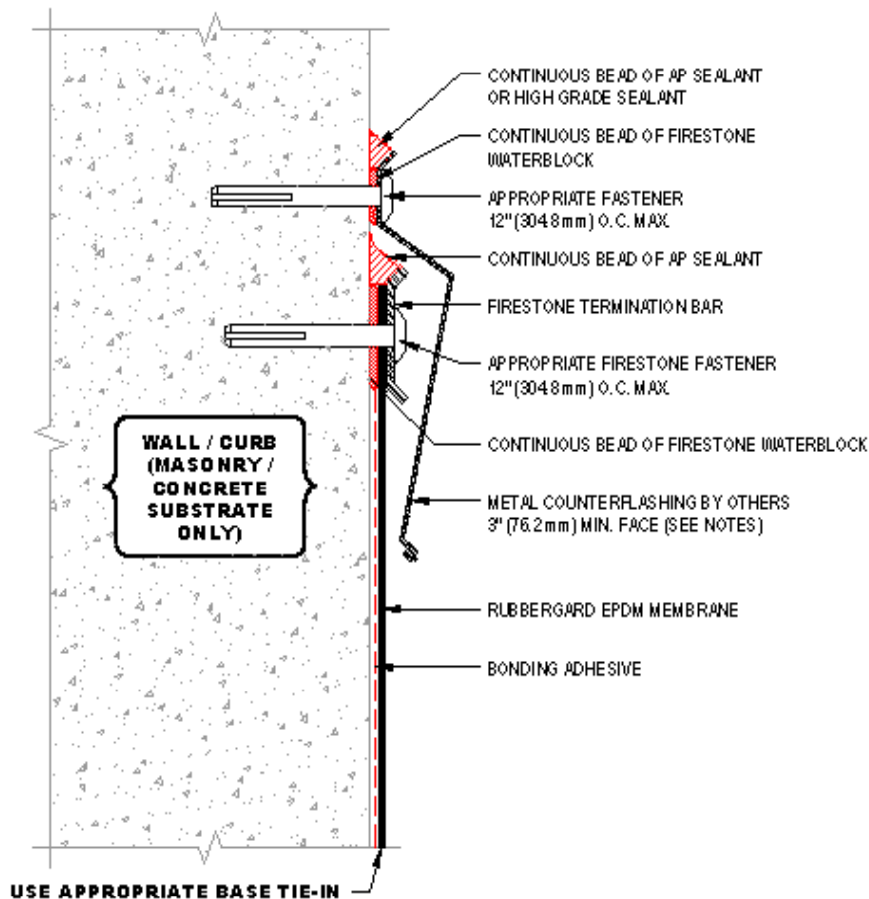


Details: Termination – Term Bar





Details: Termination Surface Mounted Counterflashing



NOTES:

1. REFER TO FIRESTONE WEBSITE FOR MOST CURRENT INFORMATION.
2. REGULAR MAINTENANCE OF COUNTERFLASHING AND SEALANTS REQUIRED. NOT INCLUDED AS PART OF THE FIRESTONE WARRANTY.
3. METAL COUNTERFLASHING SHALL BE 24-GAUGE PRE-FINISHED STEEL OR .032" MIN. ALUMINUM FORMED WITH HEMMED LOWER EDGE.
4. INSTALL FIRESTONE TERMINATION BAR WITH 1/4" (6.4mm) GAP BETWEEN ADJOINING SECTIONS.
5. TERMINATION BAR MUST BE CUT AT INSIDE AND OUTSIDE CORNERS. **DO NOT BEND AROUND CORNERS.**
6. TERMINATION BAR MUST BE FASTENED WITHIN 1" (25.4mm) MAX. OF ALL SECTION ENDS.
7. INSTALL METAL WORK IN ACCORDANCE WITH CURRENT SMACNA RECOMMENDATIONS.

MASONRY AND CONCRETE WALLS / CURBS MUST BE WATERPROOFED AND MAINTAINED IN ORDER FOR ANY SURFACE MOUNTED TERMINATION TO BE EFFECTIVE.

MAXIMUM WARRANTY: **20 YEARS**

Firestone
BUILDING PRODUCTS
NOBODY COVERS YOU BETTER.™
www.firestonebuildingproducts.com

TERMINATION WITH SURFACE MOUNTED COUNTERFLASHING AND TERMINATION BAR

RUBBERGARD™ EPDM

ACCEPTABLE SYSTEMS: ALL

ISSUE / REVISION #
DATE:
1/1/2006

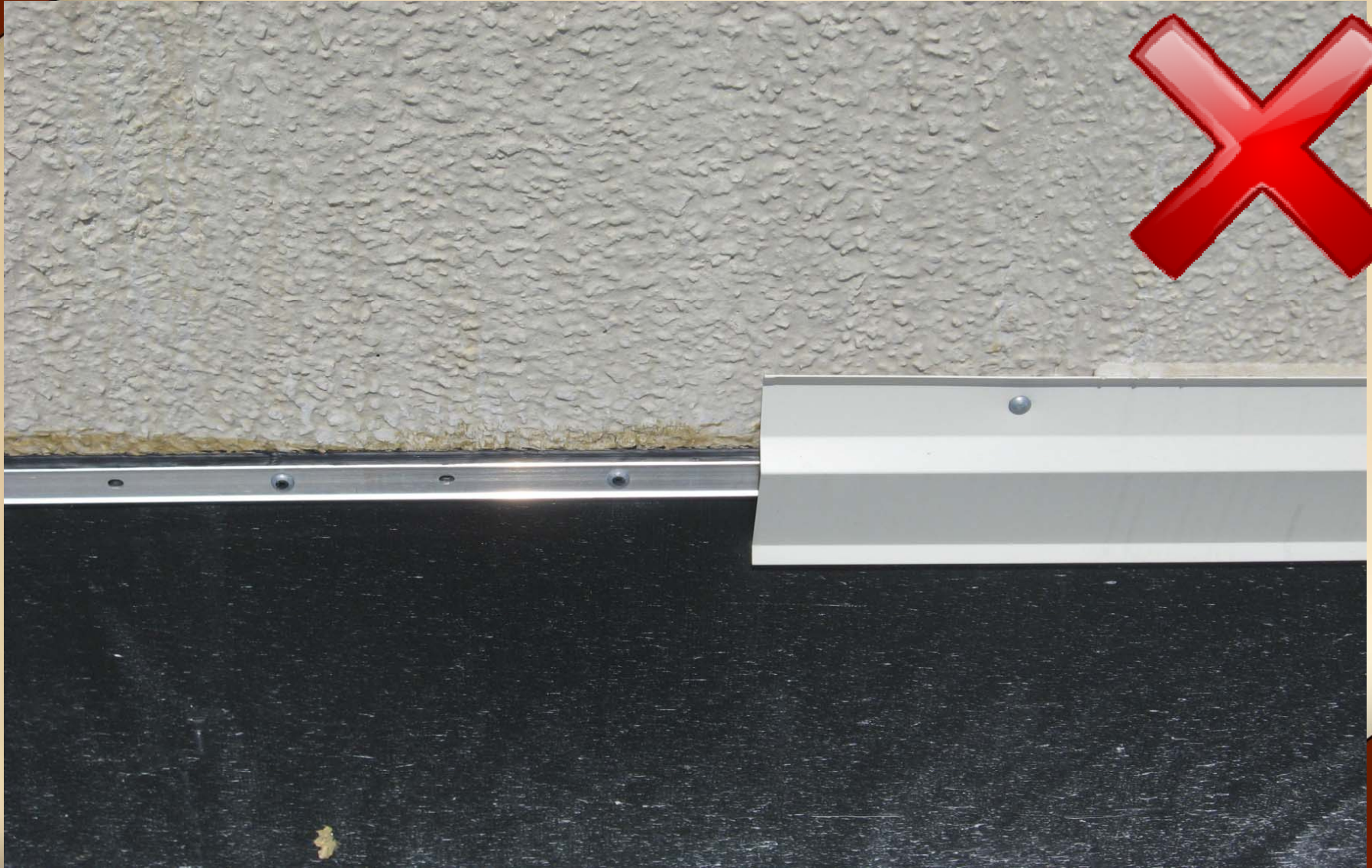
NOT TO SCALE

DETAIL NO.

T-6



Details: Surface Mounted Counterflashing





Details: Surface Mounted Counterflashing





Termination Tips

- When term bar is used, it must be Firestone Termination Bar.
- Install the termination bar so that the flanges angle away from the wall.
- A continuous bead of Firestone Water Block is required behind all termination bar.
- A continuous bead of caulking is required along the top edge of the termination bar.
- Ensure that the termination is fastened per specifications and details.



Details: Walkway Pad





Walkway Pad Tips

- Walkway pads should be installed at all entrance and exit points of the roof.
- Walkway pads should be installed in high traffic areas leading to units that require frequent maintenance.
- Should be used in lieu of Firestone RubberGard EPDM membrane.
- Walkway pads should not cover membrane lap splices. Cut the walkway pads to allow for the laps to show.
- Should be secured per Firestone details.