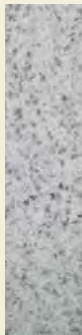




Art Tour *at The* Grand

ART AT THE GRAND

The Grand America Hotel is proud to be a showplace of museum-quality paintings, sculpture, and antiques. Guests enjoy an opportunity to view works of art carefully selected from prestigious international collections.



WHITE BETHEL GRANITE Selected for its dazzling color, White Bethel granite is the whitest in the world. Large granite blocks were quarried in Vermont under the close supervision of Owner Earl Holding, then shipped to San Sebastian, Spain to be cut, honed, and polished. 450,000 square feet of marble was shipped to Utah via the Panama Canal, 85,000 of which is hand-set around the hotel's curved arches and detailed windows and doorways.



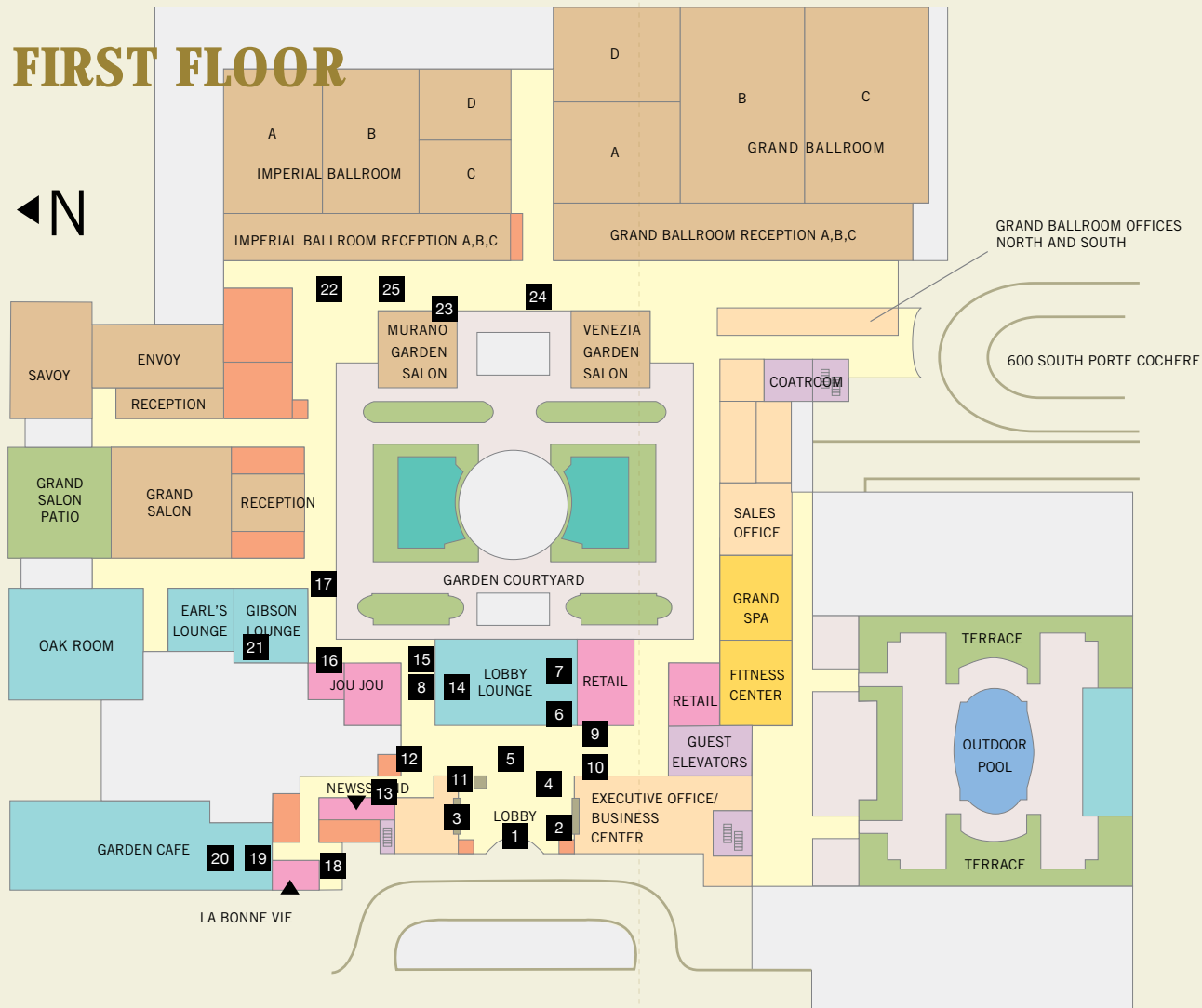
ANEGRE WOOD Paneling in the lobby and corridors is Anegre, a unique West African wood. It was selected for its warm golden tone, lustrous sheen, and unusual grain.



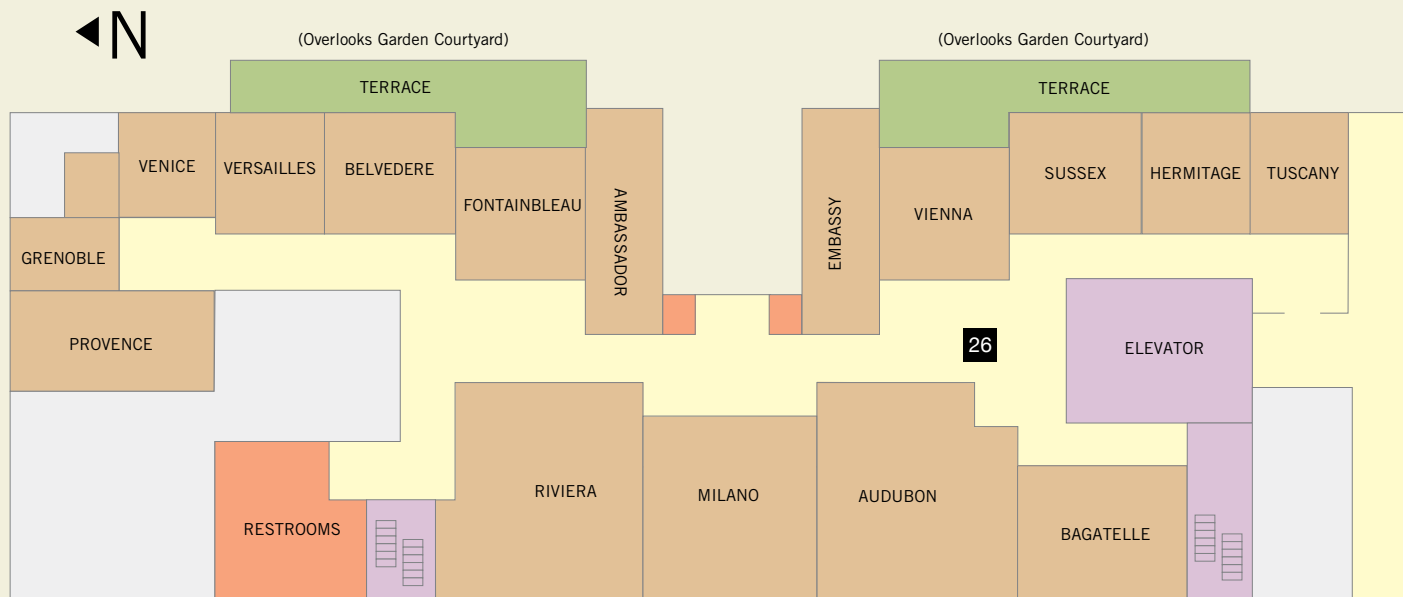
PAINT SCHEMES The hotel's detailed paint scheme employed 155 full time painters for nearly two years, detailing the woodwork.

1. Lobby Marble
2. "Les Amusements Champetres"
3. "Retour de Chasse"
4. Sconces
5. Barovier and Tosso Chandeliers
6. "The Actress"
7. "Mother and Child"
8. Watermarked Mirror
9. Louis XVI Gold Leaf Mirror & "Napoleon III Boule Clock"
10. Painting "Le The" -The Tea
11. "Chanson Grise"
12. Aubosson Tapestry: This tapestry "The Bowling Game"
13. "Boy and Girl Strolling"
14. Marble Urns & "Early Sailing Vessels"
15. Antique French Desk & Le Joueur de Cornemuse"
16. Antique Wood Chiffonier
17. Moscatelli Chandeliers
18. Painting By Linda Curley
19. Bronze "Girl With Teddy Bear"
20. Verde Issorie Marble
21. Gibson Lounge
22. "Tapisserie Dans Le Gout De Pillement"
23. "Girl With Butterfly"
24. Italian Gold Leaf Table
25. Bronze Urns

◀ N



THIRD FLOOR



26. Barovier and Tosso Chandeliers
English White Oak
Corridor Art
Audubon Lithographs



ART IN GUESTROOMS

All the white and grey veined marble in the guest baths is **Ciacatta Fabricatti**, one of the rarest and lovely marbles in the world. Quarried in the Carrera region of Italy, Mr. Holding made many trips to ensure excellent quality.

American artist, **Joy Waldman**, painted artwork hanging in each guest room. Prints were made, then Waldman embellished and numbered each by hand.

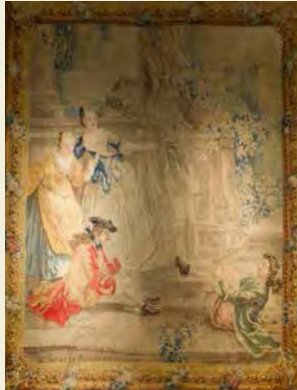
Guest room furniture was made of **solid cherry wood** by hand in Richelieu, France. The marble tops on the guest room furniture are made from **St. Florient Rose marble**, quarried in Portugal.

The gorgeous fabrics in each guest room were woven in Italy on a custom basis for the Holding family by the **Spinelli Mill**.

- 1 LOBBY MARBLE** Gray and white Northern Italian marble known as “Fior de Pesco” was book-matched and end-matched on walls and floors, creating exquisite designs. The accent borders are created from “Fior De Pesco Carnico” and “Ross Antico” marble, personally selected by Mr. Holding on numerous trips to Italy to obtain the marble used in the hotel.

2 “LES AMUSEMENTS CHAMPETRES”—GAMES IN THE COUNTRYSIDE

Made at the Aubusson Royal Manufactory in 1760, this tapestry was fashioned after Jean-Baptiste-Oudry, a French Rococo painter, engraver, and tapestry designer. Woven in wool and silk, it was originally part of a collection including scenes of popular French games, although the game depicted has not been identified.



- 3 “RETOUR DE CHASSE”** The 18th century tapestry entitled “Return of Hunting” is located behind the concierge desk. Woven by Aubusson Royal Manufactory, it was part of a collection featuring popular French games.



- 4 SCONCES** Made by Tisserante, a Paris chandelier company which made many of the chandeliers for the Palace at Versailles. All are solid bronze, sand cast and hand worked.

- 5 BAROVIER AND TOSSO CHANDELIERS** Made especially for the Grand America, each chandelier is crafted of hand-blown glass on the island of Murano near Venice, Italy. Barovier and Tosso have been in the chandelier business for 900 years. The Holding family met with Mr. Barovier, a descendant of the original founders, and together they designed the chandeliers on display throughout the Lobby, Garden Café, Murano and Venezia Garden Salons, and the Indoor Pool.



6

"THE ACTRESS" This portrait of actress Helene Langeau de las Treille, by Henri Bouvet, presented in 1912 at the Salon of the French Society of Beaux Arts. Helene was a famous French actress who played for, among others, Sacha Guitry, a noted Parisian stage actor.

7

"MOTHER AND CHILD"

This original oil painting of Lady Gail Mott, wife of the co-founder of General Motors, with her son, Charles, was the centerpiece of the 1907 London Art Expedition. It was painted by John Grey, a contemporary of John Singer Sergeant.



8

WATERMARKED MIRROR The watermarked mirror displayed over the lobby bar is one of the many antique mirrors discovered in the attic of the Westgate Hotel in San Diego, California, when the property was purchased by the Holding family in 1976.

9

LOUIS XVI GOLD LEAF MIRROR & "NAPOLEON III BOULE CLOCK" (NAPOLEON BAIL CLOCK) 19th Century Louis XVI gold leaf mirror with a Center Beveled Glass, Acanthus Leaf Finials and turned side columns.



10

PAINTING "LE THE" —THE TEA The painting by Henri Bouvet depicts the painter's family having tea. It hung for many years in the Bouvet home in France.



11

“CHANSON GRISE” Literally translated as ‘gray song’, this oil on canvas by Henri Bouvet presented in Paris at the Salon of the French Society of Beaux Arts in 1906. Located in the lobby, it depicts the painter’s family singing a popular song of the time.

12

**AUBUSSON
TAPESTRY: “THE
BOWLING GAME”**

Made in the Aubusson Royal Manufactory in the mid-18th century, this wool and silk tapestry depicts scenes of village life.



13

“BOY AND GIRL STROLLING”: This cast bronze sculpture by artist Jon Davidson was made in Italy and acquired through the Vilda De Poro Gallery in Palm Beach, Florida. It is on display in the north lobby corridor.



14

MARBLE URNS: The unique pieces with rams-head handles and raised feet sit below the “Early Sailing Vessels” art collection.

“EARLY SAILING VESSELS”: There are eight antique hand-colored engravings from Paris, heightened with gilt (the process of applying gold leaf). The paintings depict sailing vessels, circa 1690.

15

ANTIQUE FRENCH DESK: Antique French desk with bronze ormolu trim and an inset leather top. Ormolu is an 18th-century English term for applying finely ground, high-karat gold to an object in bronze.

**LE JOUEUR DE CORNEMUSE” –THE BAGPIPE
PLAYER:** Mid 18th century Brussels tapestry. After the Flemish painter David Teniers the Younger (1610-1690). Very finely woven in wool and silk. Hangs above an antique Wood Chiffonier.



16

ANTIQUE WOOD**CHIFFONIER:** This

cabinet was acquired in Vienna, Austria by the Holding family. Crafted from nut tree root and inlay, as well as fruitwood veneer and maple fumier, it dates back to 1750 and the old Bavarian city of Regensburg, a cultural center of the 18th century. A Chinese porcelain vase graces its top, and no information about its origin is available.



17

MOSCATELLI CHANDELIERS:

Made of solid bronze and designed by the Moscatelli family of Milan, Italy, they are sand cast and of a design unique to the hotel. They can be found in the Grand Salon.



18

PAINTING BY LINDA CURLEY:

This painting of rich color and dramatic lighting is by Utah Artist Linda Curley. She is known for her rich color usage and dramatic lighting. Two more can be found inside the Garden Café. Artist Statement:



"The thrill of capturing a stunning ray of light, line, or color is a powerful feeling of triumph, like participating in creation and being able to recognize it as good. I know I didn't create it, but I was inspired by it."

19

BRONZE "GIRL WITH TEDDY BEAR": This cast bronze sculpture was made in Italy and depicts a young girl at play. The piece was acquired through Vilda de Poro gallery.



20

VERDE ISSORIE

MARBLE: Dark green marble which surrounds each tall curbed window in the Garden Café.

21

GIBSON LOUNGE: Adorning the walls of the hotel's Gibson Lounge are portraits named for Irene Gibson, 1873-1956. Ms. Gibson set the fashion trend for the ideal American woman at the turn of the century. Originally from Richmond, she was the ultimate southern belle, witty, charming, beautiful and delightful in every way. While in New York for debutante balls and teas, she met the handsome and popular young artist, Charles Dana Gibson. They quickly became America's favorite couple and were wed on November 7th, 1895. She became the model for several of her husband's drawings.



22

“TAPISSERIE DANS LE GOUT DE PILLEMENT”

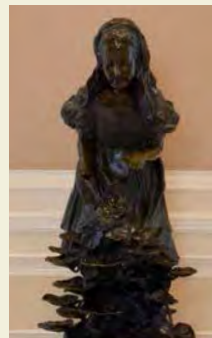
—TAPESTRY IN THE GOUT OF PILLEMENT:

This beautiful Tapestry was acquired from a private collector in Normandy and is from the era of Louis XV (1715-1774). It is a tapestry which represents an imaginary landscape with exotic birds and pagodas in luxurious and abundant vegetation. Signature is of Mr. F Aubusson.

23

“GIRL WITH BUTTERFLY”:

This Italian piece, depicting a young girl at play, was acquired from the Vilda De Poro Gallery in Florida.



24

ITALIAN GOLD LEAF

TABLE: An ornate gold leafed Italian credenza with eight legs, ogre edges and green marble top.



25

BRONZE URNS: At the entrance to the Imperial Ballroom and in the center courtyard stand pairs of Italian bronze urns.

BAROVIER AND TOSSO CHANDELIERS:

Moscatelli, Borovier and Tosso all contributed to the lighting design and bronze and crystal chandeliers on this floor. Designed by Mr. Barovier together with the Holding family.

CORRIDOR ART: Although little is known about each piece individually, the corridor includes Crystal Palace Lithographs, a set of unique hand-colored copper engraving entitled "Ten Views of Versailles" by Nicolas De Poilly, "The Garden of England" a set of color-printed lithographs from 1857 London by E. A. Brooke and a set of 1842 hand-color lithographs of the interiors and exteriors of Venice by Lake Price.

AUDUBON LITHOGRAPHS: Some of the most beautiful John James Audubon (1785–1851) lithographs ever collected hang in the north foyer on the Third Floor. Each was drawn from nature with intimate detail and artistic precision. These prints include the Snowy Owl, Great Horned Owl, Spotted Grouse and Virginia Partridge.



PRIVATE TOUR

Private tours available on a limited basis through the Grand Ambassador. Please call 801-258-6608 to schedule.

SPINDLER MARQUETRY: Throughout the Oak Room, you will find a collection of marquetry pieces done by Jean-Charles Spindler, a third generation marquetry artisan from the Alsace region of France. Marquetry is the ancient art of inlaying many different types of wood to create a detailed design. Thousands of varieties of wood, from the green tulip tree of Virginia to the gnarls of thuja from Morocco are cut into tiny pieces and assembled with precision. More than one thousand veneering oils and several thousand varieties of veneer have been chose from throughout the world to complete the pieces.

**IMPERIAL MOSCATELLI CHANDELIERS:**

Crafted in the Maria Theresa style especially for the Holding family after Mr. Holding and Mr. Moscatelli climbed into the company's attic and located the centuries-old pattern for these unique chandeliers, they are on a much larger scale than Moscatelli had made in generations. Each crystal is hand-cut Czechoslovakian crystal. The chandeliers were sent to the Grand America from Italy in pieces, and assembled by hand on site, under the careful supervision of Anna Moscatelli herself.



MEISSEN PORCELAIN MIRROR: German porcelain made in the 19th century.

BAROVIER AND TOSSO CHANDELIERS Exquisite hand-blown glass chandeliers in the Venezia Room made especially for The Grand America. Designed by Mr. Barovier together with the Holding family.



GRAND MOSCATELLI CHANDELIERS: These 12' diameter Moscatelli chandeliers are the largest bronze and crystal chandeliers ever made. During their centuries in the chandelier business, the Moscatelli family was fortunate to acquire a large amount of rare antique pendalux crystals, which were hidden in the Czechoslovakian countryside by Mr. Moscatelli's grandfather during World War II, then driven by him in a wagon to their Milan, Italy factory after the war. Bohemian crystals of this size and shape are no longer made, but they were well-suited to the massive design of the Grand Ballroom chandeliers. They hang on the outer perimeter of each chandelier, a perfect complement to the large antique Bohemian crystal balls with adorn the bottom center of each chandelier.

GIEMME TABLE: The unique custom-made tables in the Embassy and Ambassador board-rooms on the hotel's third floor feature three pedestal bases, custom rounded corners, and an inlay-patterned top in Karelian Honey-Tone Burl. They were shipped from Italy in sections and assembled on site at the hotel.



The
GRAND
AMERICA
Hotel

555 S MAIN STREET
SALT LAKE CITY, UT 84111
WWW.GRANDAMERICA.COM

© 2014 THE GRAND AMERICA HOTEL