

FISHER & PAYKEL
DCS OUTDOOR GRILL RANGE
2012/2013



Fisher & Paykel



HUNTINGTON BEACH, CALIFORNIA

Surf, sun and the best of outdoor living.

It's also the birthplace of DCS, America's first and still finest outdoor grills. Perhaps the similar origins are no coincidence. After all DCS established professional grade outdoor cooking as a response to California's famous outdoor lifestyle. Now DCS is here in Australia. A little piece of California in your backyard.

THE HISTORY OF DCS

THE FOUNDING YEARS

DCS, Dynamic Cooking Systems, was founded in California, USA in 1988, initially specialising in quality high performance stainless steel cooking equipment for the commercial food industry. The team at DCS quickly recognised the desire for home chefs to master restaurant-level cooking at home. DCS responded, taking its commercial sector experience and applying it to a full product repertoire of durable, professional-styled, indoor and outdoor cooking equipment for the home. So began USA's love affair with high-end, outdoor cooking and established DCS as the pioneer in this area. DCS went on to eventually become one of America's leading manufacturers of professional quality indoor and outdoor gas ranges for the home. DCS also became a preferred equipment manufacturer for private labeled companies such as Costco, William Sonoma, Thermador, Jennair, and GE. Within twelve years, DCS sales grossed over \$100 million.

DCS TODAY

Design and development teams are now situated at a number of Fisher & Paykel facilities, including California, Mexico and New Zealand; drawing experience from around the world, ensuring DCS remains at the very forefront of grill technology and performance. Drawing on the founding principles of the DCS brand, Fisher & Paykel continues to leverage DCS's commercial heritage to bring the cooking tools of a master chef to the home kitchen, both indoors and out. Today DCS continues to be the brand against which all other grills measure themselves and aspire to. The DCS outdoor grill is not only built for very high performance, but built to last.



**DCS INVENTED
THE ART OF
OUTDOOR GRILLING**

Designed in response to a demand for professional kitchen appliances in homes, DCS Grills have pioneered a new category in high performance outdoor cooking — beyond traditional barbeques. These products are *not* BBQs, they are Grills, defined as such by much higher burner power and ability to quickly reach intense searing temperatures which fall far out of the realm of ordinary BBQs. The concept behind the range was for a complete professional outdoor kitchen — the heart of which is the Grill. DCS Grills are built to deliver the functionality demanded by any professional chef — performance, simplicity and durability. Building on a heritage of commercial-quality appliances, the DCS Grill Range is unparalleled in delivering intense heat, low heat and easy cleanability. The range is unique in its simplicity of design — a patented high performance cooking system, strongly engineered and hand crafted, whilst eschewing unnecessary temperature gauges, single zone sear burners and other unreliable domestic grade features. Designed in Huntington Beach, California, Dynamic Cooking Systems (DCS) Grills are constructed to withstand the demands of professional chefs and the extremes of mother nature.



THIS IS NOT A BBQ



1 Intense Heat

Industrial grade stainless steel burners combined with ceramic radiant technology provides intense even heat of over 400°C.

2 Robust Construction

Heavy duty engineering and construction features solid 304 grade stainless steel throughout and heavy gauge fittings.

3 Patented Grease Management System™

The Patented Grease Management System™ reduces flare-ups by channelling grease away from the burner flames during grilling.

4 Ultimate Cooking Surface

Full surface searing, rather than single zone, made possible through precision ported stainless steel burners, ceramic radiant rods and heavy gauge stainless steel burner box construction.

5 Professional Rotisserie

Every DCS Grill comes with standard integrated rotisserie including high torque 6.3Nm motor, 25kg rated hexagonal spit rod and dedicated infrared back burner.

6 Californian Design

DCS (Dynamic Cooking Systems) from Huntington Beach California designed North America's very first professional outdoor grill. DCS remains *the* standard by which all others are measured.







**A PROFESSIONAL KITCHEN
IN YOUR BACKYARD**







**THE DCS
OUTDOOR GRILL
RANGE**

Fisher & Paykel DCS outdoor Grills are designed to compliment any outdoor environment. Whether it's fully built-in integration within an architecturally designed outdoor kitchen space or the maneuverability and flexibility of a Grill cart, the DCS range takes performance to a new level. The range consists of three grill head units: a 36" All Grill; a 36" Grill with two side burners (on 48" base) and the largest of all 48" All Grill. Each head unit is fitted as standard with heavy duty rotisserie, including high torque weather proof motor, roller bearing cradles, dedicated high power infrared burner, 25kg capacity rod and adjustable forks. The head units may be attached to either 36" or 48" all stainless steel carts, complete with convenient storage drawers and cupboards, to create spectacular freestanding units. Adding CAD-SK side shelves and quality wooden chopping board inserts completes the finest outdoor Grill one is ever likely to experience. Each DCS Grill is engineered to deliver unparalleled performance and unmatched longevity.

BUILT-IN

36" All Grill

Controlled heat is the key to great outdoor grilling. The 36" All Grill combines precision-ported stainless steel burners with Ceramic Radiant Technology and double sided cast stainless steel grilling grates. In addition the heavy duty dedicated infrared rotisserie is perfect for outdoor roasting.



01

48" Grill & Side Burners

Bringing kitchen conveniences outdoors, this unit features a 36" Grill and hood, with double side burners for a total of 48" of cooking flexibility. The two side burners are ideal for preparing pan and wok based dishes. The grill area combines precision-ported stainless steel burners with Ceramic Radiant Technology and cast stainless steel grilling grates. In addition the heavy duty dedicated infrared rotisserie is perfect for outdoor roasting.



01

48" All Grill

The ultimate in high performance outdoor cooking, the 48" All Grill is our largest product, providing over half a square metre of uninterrupted grill area.



01

FREESTANDING



02



02



02

01

BGB36-BQAR-L
BGB36-BQAR-N
 H616 x W1086 x D676 mm

02

BGB36-BQAR-L Grill on Cart
(CAD-36)
BGB36-BQAR-N Grill on Cart
(CAD-36)
 H1264 x W1086 x D676 mm

01

BGB48-BQR-L
BGB48-BQR-N
 H616 x W1381 x D676 mm

02

BGB48-BQR-L Grill on Cart
(CAD-48)
BGB48-BQR-N Grill on Cart
(CAD-48)
 H1264 x W1381 x D676 mm

01

BGB48-BQAR-L
 H616 x W1386 x D676 mm

02

BGB48-BQAR-L Grill on Cart
(CAD-48)
 H1264 x W1386 x D676 mm

Note: Freestanding models are shown with side shelves which adds an extra 610mm to each side of the grill cart.



DCS Outdoor Grill Range Features

1 Robust Construction

Strongly engineered and incredibly detailed. Featuring heavy grade 304 stainless steel throughout, with welded and polished seams, heavy duty fittings, handles and controls. All intended to be the last grill anyone will need to purchase.



2 Stainless Steel Burners

Another example of our intense focus on quality and performance; the precision ported U-shaped stainless steel burners are rated at a massive 27MJ/h each. Each burner is ignited by a dedicated cross fire igniter.



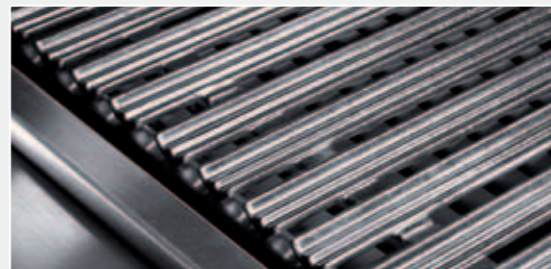
3 Ceramic Radiant Technology

An entire layer of ceramic rods are placed between burners and grill grate. These provide intense yet even heat, meaning you are cooking with controlled heat rather than direct fire. On DCS Grills there is little variance in temperature zones—the total grilling surface is very consistent.



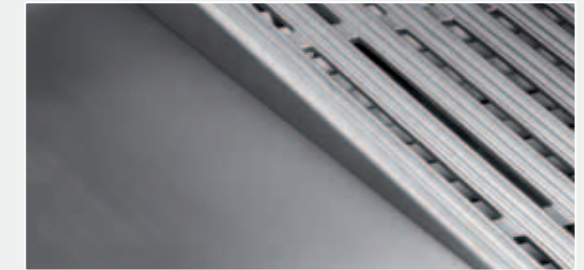
4 Double-sided Cast Stainless Steel Grilling Grates

Double sided cast stainless steel grilling grates—deliver perfect sear lines at the same time as channelling away grease to an easily removable capture tray. Grates feature one side with a gentle radius for support and handling, while the other side is W-shaped for maximum grease capture, while leaving perfect sear lines.



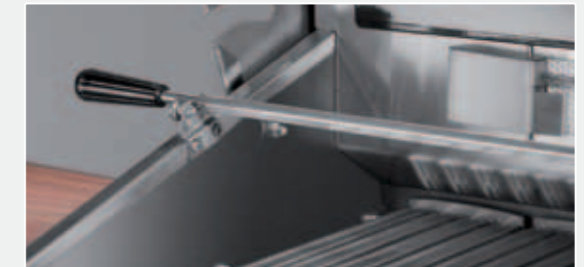
5 Patented Grease Management System™

The Patented Grease Management System™ reduces flare-ups by channelling grease away from the burner flames during grilling.



6 Rotisserie

Dedicated infrared rotisserie burner—provides controlled searing heat. The heavy duty rotisserie motor with stainless steel hexagonal rod and adjustable forks can accommodate a 25kg load.



7 Smart Beam™ Grill Light

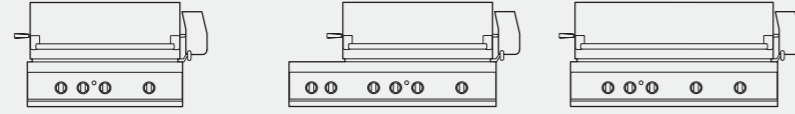
Smart Beam™ Grill Light—illuminates the entire cooking surface for perfect night grilling. A 40 watt halogen light is integrated into the patented weather proof rotisserie motor, making it easily accessible and ergonomic.



8 9 Volt Battery Ignition

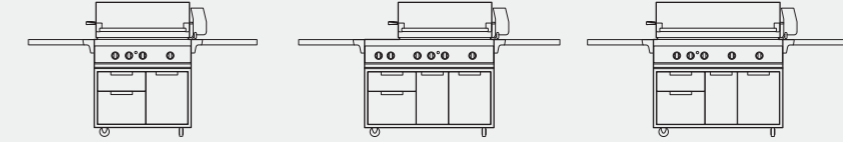
9 Volt battery ignition ensures safe and efficient igniter action and grill lighting every time; unlike often unreliable basic piezo electric systems.





Type of appliance	36" All Grill	48" Grill & Side Burners	48" All Grill
Model No.			
Universal LPG	BGB36-BGAR-L DCS AA	BGB48-BQR-L DCS AA	BGB48-BQAR-L DCS AA
Natural gas	BGB36-BGAR-N DCS AA	BGB48-BQR-N DCS AA	
Finish	304 grade stainless steel	304 grade stainless steel	304 grade stainless steel
Dimensions			
With rotisserie motor mounted	H616 x W1086 x D676mm	H616 x W1381 x D676mm	H616 x W1386 x D676mm
Without rotisserie motor mounted	H616 x W912 x D676mm	H616 x W1217 x D676mm	H616 x W1217 x D676mm
With the grill hood up	H880 x W912 x D718mm	H880 x W1217 x D718mm	H880 x W1217 x D718mm
Insulation jacket (optional)	H281 x W1025 x D603mm	H281 x W1309 x D603mm	H281 x W1309 x D603mm
Primary cooking area (grill)	0.41m ²	0.41m ²	0.54m ²
Secondary cooking area (warming rack)	0.15m ²	0.15m ²	0.21m ²
Side burner cooking area		0.16m ²	
Total cooking area	0.56m ²	0.72m ²	0.75m ²
Burners			
Grill burners	3	3	4
Infrared rotisserie burner	●	●	●
Side burners		2	
Integrated side burners		●	
Burner ratings* (Universal LPG)			
Grill burners	3 @ 26.5MJ/h	3 @ 26.5MJ/h	4 @ 26.5MJ/h
Total nominal gas consumption	96MJ/h	125MJ/h	125.5MJ/h
Integrated rotisserie burner	16.5MJ/h	16.5MJ/h	19.5MJ/h
Integrated side burners		2 @ 14.5MJ/h	
Regulator pressure	2.75kPa	2.75kPa	2.75kPa
Burner ratings* (Natural gas)			
Grill burners	3 @ 27MJ/h	3 @ 27MJ/h	
Total nominal gas consumption	95MJ/h	124MJ/h	
Integrated rotisserie burner	14MJ/h	14MJ/h	
Integrated side burners		2 @ 14.5MJ/h	
Regulator pressure	1.00kPa	1.00kPa	
Performance			
9V battery ignition	●	●	●
304 grade stainless steel gas manifold and burner tubs	●	●	●
Ceramic radiant technology	●	●	●
Designer metal control knobs	●	●	●
Double sided SS grilling grates	●	●	●
Full surface searing across entire grilling area	●	●	●
Grease management system™	●	●	●
Infrared rotisserie burner	●	●	●
Heavy duty rotisserie motor	240V 50Hz	240V 50Hz	240V 50Hz
Removable SS warming rack	●	●	●
Smart Beam™ grill light	●	●	●
Stainless steel drip tray	●	●	●
Speed of rotisserie	6 rpm	6 rpm	6 rpm
Weight rotisserie can handle	25kg	25kg	25kg
Accessories			
Rotisserie system	●	●	●
Warranty			
Manufacturer's warranty	2 Years	2 Years	2 Years
Stainless steel grill burners and all cast alloy parts	2+3 Years	2+3 Years	2+3 Years
Stainless steel grill cover, burner box, cooking grates, grill racks	2+13 Years	2+13 Years	2+13 Years

*Ratings are approximate at time of publishing.



Type of appliance	36" All Grill + Cart	48" Grill & Side Burners + Cart	48" All Grill + Cart
Model No.			
Universal LPG	BGB36-BGAR-L DCS AA	BGB48-BQR-L DCS AA	BGB48-BQAR-L DCS AA
Natural gas	BGB36-BGAR-N DCS AA	BGB48-BQR-N DCS AA	
Cart	CAD-36 DCS	CAD-48 DCS	CAD-48 DCS
Finish	304 grade stainless steel	304 grade stainless steel	304 grade stainless steel
Dimensions			
With rotisserie motor mounted	H616 x W1086 x D676mm	H616 x W1381 x D676mm	H616 x W1386 x D676mm
Without rotisserie motor mounted	H616 x W912 x D676mm	H616 x W1217 x D676mm	H616 x W1217 x D676mm
With the grill hood up	H880 x W912 x D718mm	H880 x W1217 x D718mm	H880 x W1217 x D718mm
Grill on cart (including rotisserie motor mounted)	H1264 x W1086 x D676mm	H1264 x W1381 x D676mm	H1264 x W1386 x D676mm
With 2x side shelves extended	H1264 x W2132 x D676mm	H1264 x W 2437 x D676mm	H1264 x W2437 x D676mm
Primary cooking area (grill)	0.41m ²	0.41m ²	0.54m ²
Secondary cooking area (warming rack)	0.15m ²	0.15m ²	0.21m ²
Side burner cooking area		0.16m ²	
Total cooking area	0.56m ²	0.72m ²	0.75m ²
Burners			
Grill burners	3	3	4
Infrared rotisserie burner	●	●	●
Side burners		2	
Integrated side burners		●	
Cart features			
Easy access storage drawers	●	●	●
Built-in bottle storage	●	●	●
Anti-tip drawer stands	●	●	●
Telescopic runners	●	●	●
Easy cleaning	●	●	●
Customised drawers with chiller options	●	●	●
Swivel wheels with brake	●	●	●
Ability to attach side shelves	●	●	●
Accessories			
Rotisserie system	●	●	●
Warranty			
Manufacturer's warranty	2 Years	2 Years	2 Years
Stainless steel grill burners and all cast alloy parts	2+3 Years	2+3 Years	2+3 Years
Stainless steel grill cover, burner box, cooking grates, grill racks	2+13 Years	2+13 Years	2+13 Years

ACCESSORIES



DCS Grilling Tool Set + Apron

BGA-GT5

5-piece stainless steel Grilling Tool Set. Tool designed exclusively for use with DCS Grills. Double Sided Grill Scraper and Brush, Grease Management System™ Trough Scraper, DCS Grilling Apron.

Part No. 70143



Grill Tool Replacement Brush Head

BGA-GTRH

Replacement head for Double Sided Grill Scraper and Brush from Tool Set.

Part No. 70495



Griddle Plate

BGA-GP

Commercial quality stainless steel. Features a "blanchard" ground surface.

Part No. 71013



DCS Grilling Apron

BGA-GA

DCS branded heavy-duty canvas grilling apron with deep pockets to accommodate every tool of the DCS Grill Tool set.

Part No. 70141



DCS Grill Cover

Freestanding

To protect and care for your DCS professional grill all year long, we offer grill covers for all sizes and models of DCS freestanding grills. To offer maximum protection from the elements, they are heavy-duty, black lined vinyl with a Velcro opening in the front.

Part Nos.
70169 36" On Cart
70174 48" On Cart

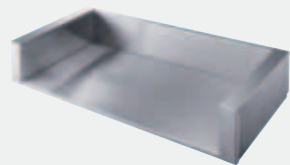


DCS Grill Cover

Built-in

To protect and care for your DCS professional grill all year long, we offer grill covers for all sizes and models of DCS built-in grills. To offer maximum protection from the elements, they are heavy-duty, black lined vinyl with a Velcro opening in the front.

Part Nos.
70168 36" Built-in
70982 48" Built-in (Side Burner)
70517 48" Built-in (All Grill)



Insulated Jacket for Built-in Models

BGA36-IJS, BGA48-IJS

When building the grill into an outdoor enclosure made of combustible materials, use only the approved DCS insulated jacket, which has been specifically designed and tested for this purpose.

Part Nos.
85142 36" Built-in
85143 48" Built-in

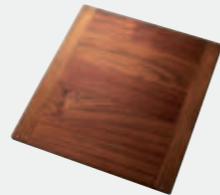


Side Shelf

CAD-SK

Attached to your "CAD" model cart, these 24" side shelves offer a sturdy expanse of workspace. Add optional custom fitted chopping boards for the finishing touch.

Part No. 70853



Custom Chopping Board

CAD-WCB

Solid high quality wooden chopping board. Fits into CAD-SK Side Shelf.

Part No. 70861





FBRO439 DECEMBER 2012.
Copyright © Fisher & Paykel 2012.
All Rights Reserved.

The product dimensions and specifications in this brochure apply to the specific products and models described at the date of issue. Under our policy of continuous product improvement, these dimensions and specifications may change at any time. You should therefore check with your dealer or Fisher & Paykel's Customer Care Centre to ensure this brochure correctly describes the products currently available.

Warranty Information: Any warranty referred to in this brochure is an extra benefit and does not affect your legal rights. In respect of any two year warranty, Fisher & Paykel undertakes to repair or, at its option, replace without cost to the owner either for material or labour, any part of the relevant product which is found to be defective within two years of the date of purchase. In respect of any parts only warranty Fisher & Paykel undertakes to repair or, at its option replace without cost to the owner the warranted part which is found to be defective within the relevant period from the expiry of the two year warranty. In respect of any part only warranty the owner will pay for labour (including any call out or service fees) and freight (if any) for replacing the relevant part. To make a claim under any warranty call customer care: T. 1300 650 590 E. aus.customercare@fisherpaykel.com

Service under any warranty must be provided by an authorised Fisher & Paykel Appliances Service Provider. Use other than in accordance with the products user guide and other than for normal domestic use may invalidate any warranty. Our goods come with guarantees that cannot be excluded under the Australian Consumer Law.

You are entitled to a replacement or refund for a major failure and for compensation for any other reasonably foreseeable loss or damage. You are also entitled to have the goods repaired or replaced if the goods fail to be of acceptable quality and the failure does not amount to a major failure.

For more information on any warranty go to www.fisherpaykel.com.au

The warrantor is:
Fisher & Paykel Australia Pty Ltd
16 Parramatta Road, Lidcombe
NSW 2141

Customer Care:
T. 1300 650 590
E. aus.customercare@fisherpaykel.com

Important Notice of Disclaimer: Our brochure contains information on a wide range of products which we manufacture and/or sell internationally. Some particular products, models or sizes which are detailed in this brochure may not be available for sale and purchase in your area or country, if available the product may have different options to those depicted in the brochure. Before agreeing to purchase a particular product by reference to this brochure please check its availability and accuracy of its description.

Fisher & Paykel

dcsgrills.com.au