



Fishfinder 90

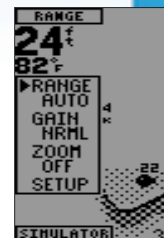
- Simple, entry-level sonar
- Black and white FSTN screen
- Features Ultrascroll™ for fast screen updates
- Dual beam transducer operation for better fish presentation in shallow water
- User selectable 14° or 45° view
- Wide viewing angle (45°) lets you see fish off the sides of the boat
- Depth 600ft
- 64 x 128 pixels; 100 watts (RMS) power; 80/120 kHz (45°/14°), dual beam; Size: 11.9 cm W x 12.4 cm H
- 4 inch diagonal display



Drop off



Structure

Range
adjustment

Waterproof



Sonar

Package Includes:

Fishfinder 90, unit cover, single knob tilt mount, flush mount hardware, 6' power/20' transducer cable, trolling motor/transom mount transducer, owner's manual

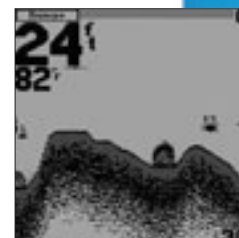


Fishfinder 140

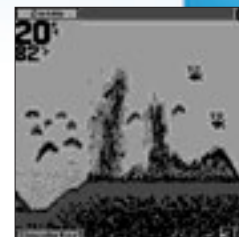
- 4 level greyscale FSTN screen
- Features Ultrascroll™ for fast screen updates
- Dual beam transducer operation for better fish presentation in shallow water
- User selectable 14° or 45° view
- Wide viewing angle (45°) lets you see fish off the sides of the boat
- AutoGain for detailed images of structure and bottom densities
- 128 x 240 pixels; 100 watts (RMS) power; 80/200 kHz (45°/14°), dual beam; Size: 15.5 cm W x 12.5 H
- 4.7 inch diagonal display



Fish in cover



Big numbers feature



Find fish easily



Waterproof



Sonar

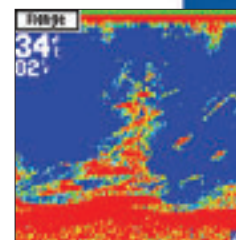
Package Includes:

Fishfinder 140, unit cover, single knob tilt mount, flush mount hardware, 6' power/20' transducer cable, trolling motor/transom mount transducer, owner's manual

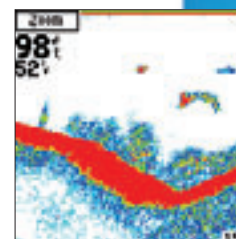


Fishfinder 160C

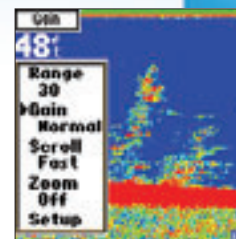
- Affordable colour sonar option for recreational fishermen
- Bright, sunlight-readable colour display
- Dual beam transducer operation for improved shallow water performance
- Ultrascroll™ high-rep-rate sonar
- Depth: 900 ft.
- See-Thru® technology separates fish from thermoclines and structure
- AutoGain for detailed images of structure and bottom densities
- 128 x 128 pixels
- 150 watts (RMS) power
- User selectable 14° or 45° view
- Size: 15.5 cm W x 12.4 cm H
- 4.5 inch diagonal display



Fish near structure



White background



Range Adjustment



Waterproof



Sonar

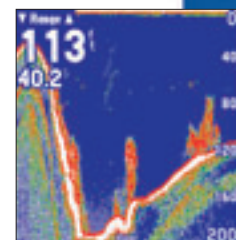
Package Includes:

Fishfinder 160C, unit cover, single knob tilt/swivel mount, 6' power/20' transducer cable, trolling motor/transom mount transducer, owner's manual

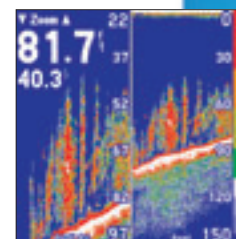


Fishfinder 250C

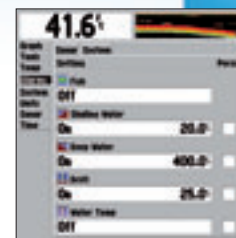
- Freshwater or saltwater use
- Sunlight-readable colour display
- Max. depth: 1500 ft.
- See-Thru® technology separates fish from thermoclines and structure
- AutoGain for detailed images of structure and bottom densities
- High resolution, 320 x 320 pixels
- 500 watts (RMS) power using dual frequency transducer
- 50/200 kHz (40°/10°) or 200 kHz (20°)
- Quick-release tilt swivel mount
- Size: 15.5 cm W x 12.4 cm H
- 4.5 inch diagonal display



Thermocline



Split-screen zoom



Set alarms



Waterproof



Sonar

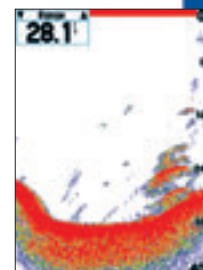
Package Includes:

Fishfinder 250C, Swivel mounting bracket, Wiring adapter cable, Transom mount/trolling transducer, Speed sensor, Power cable, Unit cover, Owner's manual

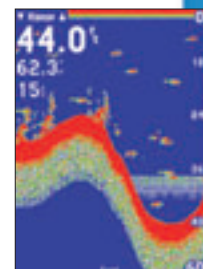


Fishfinder 340C

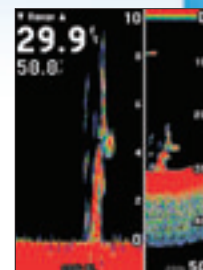
- Ideal for freshwater or saltwater
- 5 inch diagonal colour display
- Max. depth: 1500 ft. (dual freq.)
- See-Thru® technology
- Ultrascroll™ for fast screen updates
- New AutoGain technology to see more fish
- CANet® for highspeed connection to provide sounder data to compatible chartplotters
- Dual-frequency (saltwater) or dual-beam (freshwater)
- High resolution, 240 x 320 pixels
- 500 watts (RMS) power using dual frequency transducer
- Size: 16.0 cm W x 15.7 cm H



Channel and structure



Thermocline



Bottom lock



Waterproof



Sonar



CANet

Package Includes:

Fishfinder 340C, unit cover, quick release tilt/swivel mount, 6' power/20' transducer cable, owner's manual