



EGR200 ROWER OWNER'S MANUAL

PLEASE CAREFULLY READ THIS ENTIRE MANUAL BEFORE OPERATING YOUR NEW ROWER



Congratulations On Your New Rower and Welcome to the XTERRA Fitness Family!

Thank you for your purchase of this quality rower from **XTERRA Fitness**. Your new rower has been manufactured by one of the leading fitness manufacturers in the world. **XTERRA Fitness** will do all we can to make your ownership experience as pleasant as possible for many years to come. If you have questions, or if parts are missing or damaged, or you require customer service, call (870) 333-5500. Please have your model number and serial number handy when you call.

Please take a moment to record where you purchased your machine, as well as the date of purchase for future reference. We appreciate your confidence in **XTERRA Fitness** and we will always remember that you are the reason that we are in business. Please complete and mail your registration card today and enjoy your new rower.

Yours in Health,
XTERRA Fitness

Table Of Contents

Product Registration	1
Important Safety Instructions	2
ERG200 Assembly Instructions	4
Operation of Your Console	10
Program Operation	11
Manufacturer's Limited Warranty	13

ATTENTION

THIS ROWER IS INTENDED FOR **RESIDENTIAL USE ONLY** AND IS WARRANTED FOR THE APPLICATION. ANY OTHER APPLICATION **VOIDS** THIS WARRANTY IN ITS ENTIRETY.

Product Registration

Purchase Location _____

Purchase Date _____

Record Your Serial Number

Please record the Serial Number of this fitness product in the space provided below.

Serial Number _____

Register Your Purchase

The self-addressed product registration card must be completed in full and returned to **XTERRA Fitness**. You can also go to www.xterrafitness.com/warrantyreg.html to register online.

Manufacture's One-Year Limited Warranty

Your Xterra Rower Machine is warranted for one year from the date of purchase against defects in material when used for the purpose intended, under normal conditions and provided it receives proper care. Any part found defective or missing will be sent at no cost when returned in accordance with the terms of this warranty.

This warranty is not transferable and is extended only to the original owner.

The warranty shall not apply to exercise units which are (1) used for commercial or other income producing purposes, or (2) subject to misuse, neglect, accident or unauthorized repair and alterations.

This warranty provided herein is lieu of all other express warranties, any implied warranties, including any implied warranties of merchantability of fitness for particular purpose, are limited in duration to the first 12 months from date of purchase. All other obligations or liabilities, including liability for consequential damages are hereby excluded.

Important Safety Instructions

When using an electrical appliance, basic precautions should always be followed, including the following:

Read all instructions before using this appliance.

DANGER - To reduce the risk of electric shock:

1. Always unplug this appliance from the electrical outlet immediately after using and before cleaning.

WARNING - To reduce the risk of burns, fire electric shock, or injury to persons:

1. An appliance should never be left unattended when plugged in. Unplug from outlet when not in use, and before putting on or taking off parts.
2. Do not operate under blanket or pillow. Excessive heating can occur and cause fire, electric shock, or injury to persons.
3. Close supervision is necessary when this appliance is used by, on, or near children, invalids, or disabled persons.
4. Use this appliance only for its intended use as described in this manual. Do not use attachments not recommended by the manufacturer.
5. Never operate this appliance if it has a damaged cord or plug, if it is not working properly, if it has been dropped or damaged, or dropped into water. Return the appliance to a service center for examination and repair.
6. Do not carry this appliance by supply cord or use cord as a handle.
7. Keep the cord away from heated surfaces.
8. Never operate the appliance with the air openings blocked. Keep the air openings free of lint, hair, and the like.
9. Never drop or insert any object into any opening.
10. Do not use outdoors.
11. Do not operate where aerosol (spray) products are being use or where oxygen is being administered.
12. Connect this appliance to a properly grounded outlet only.
13. The appliance is intended for household use.

Fitness Equipment Safety Instructions

- To disconnect, turn all controls to the off position, then remove the plug from the outlet.
- Do not operate equipment on deeply padded, plush or shag carpet. Damage to both carpet and equipment may result.
- Before beginning this or any exercise program, consult a physician. This is especially important for persons over the age of 35 or persons with pre-existing health conditions.
- Keep hands away from all moving parts.
- The pulse sensors are not medical devices. Various factors, including the user's movement, may affect the accuracy of heart rate readings. The pulse sensors are intended only as exercise aids in determining heart rate trends in general.
- Do not attempt to use your equipment for any purpose other than for the purpose it is intended.
- Wear proper shoes. High heels, dress shoes, sandals or bare feet are not suitable for use on your equipment. Quality athletic shoes are recommended to avoid leg fatigue.

Failure to follow all guidelines may compromise the effectiveness of the exercise experience, expose yourself (and possibly others) to injury, and reduce the longevity of the equipment.

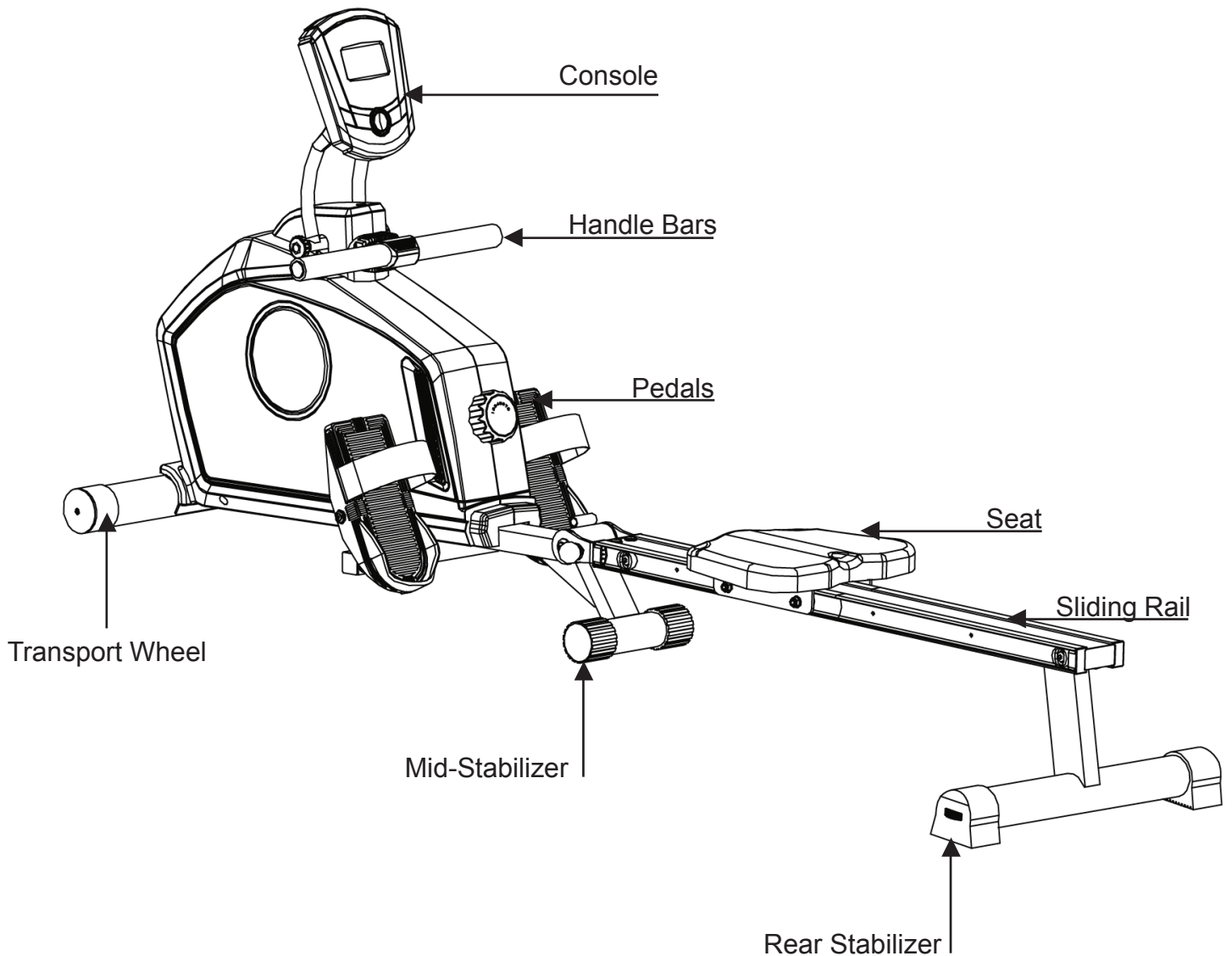
SAVE THESE INSTRUCTIONS - THINK SAFETY!

CAUTION!! Please be careful when unpacking the carton.

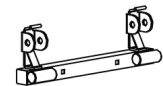
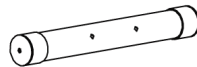
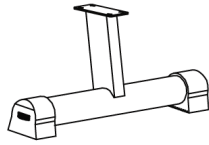
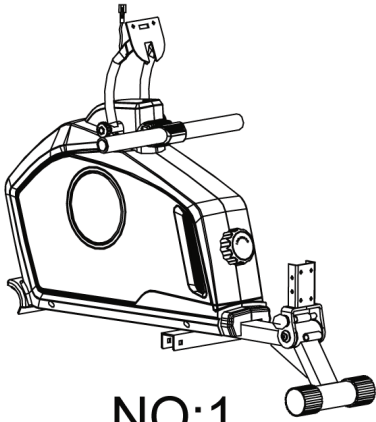
Before you begin

Thank you for selecting our revolutionary Xterra ERG200 Fitness Rower. A rower is an effective exercise for increasing cardiovascular fitness, building endurance, and toning the body. Our fitness rower provides an impressive selection of features designed to make your workouts at home more effective and enjoyable.

For your benefit, read this manual carefully before you use the ERG200 Fitness Rower. To help us assist you, note the product model number and serial number before contacting us. Before reading further, please familiarize yourself with the parts that are labeled in the drawing below.



ERG200 Assembly Pack Checklist



Part No.	Description	Q'TY
1	Main Frame	1
3	Front Stabilizer	1
9	Monitor	1
28	Rear Stabilizer	1
11	Seat	1
14L	Left Pedal	1
14R	Right Pedal	1
17	Pedal Support Tube	1
26	Sliding Rail	1
	Hardware Bag	1
	Manual	1

ERG200 Assembly Pack Checklist

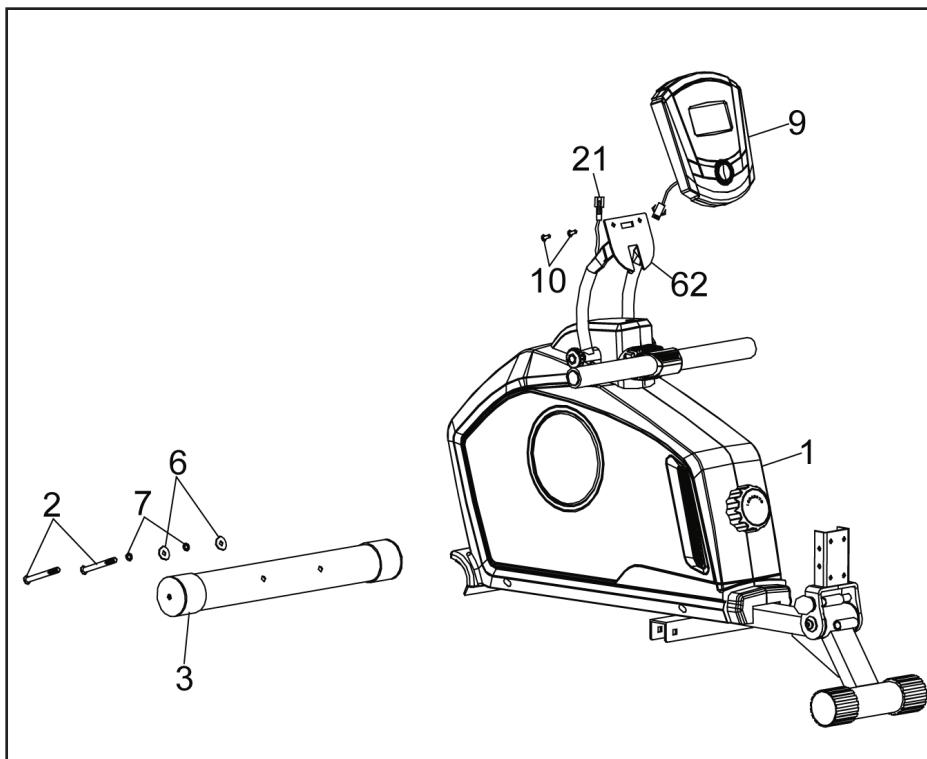
Part No	Description	Q'ty
2	Allen Bolt M8*75	2
5	End Caps	2
6	Curved Washer $\Phi 8 * \Phi 20$	2
7	Spring Washer $\Phi 8$	2
12	Allen Screw M6*12	4
13	Washer $\Phi 6 * \Phi 17$	4
15	Axle for Pedal	2
19	Carriage Bolt M8*45	2
34	Domed Nut M8	2
22	Plastic Washer	4
23	Allen Screw M8*20	4
24	Allen Screw M8*16	10
25	Washer $\Phi 8 * \Phi 17$	12
	Box Wrench	1
	Allen Key 4mm	1
	Allen Key 6mm	1

Note: Above parts are all needed to assemble this machine. Before you start to assemble, please check the hardware packing to make sure they are included.

ERG200 Assembly Instructions

1 Stabilizers, Console Mast & Console

Hardware Step 1

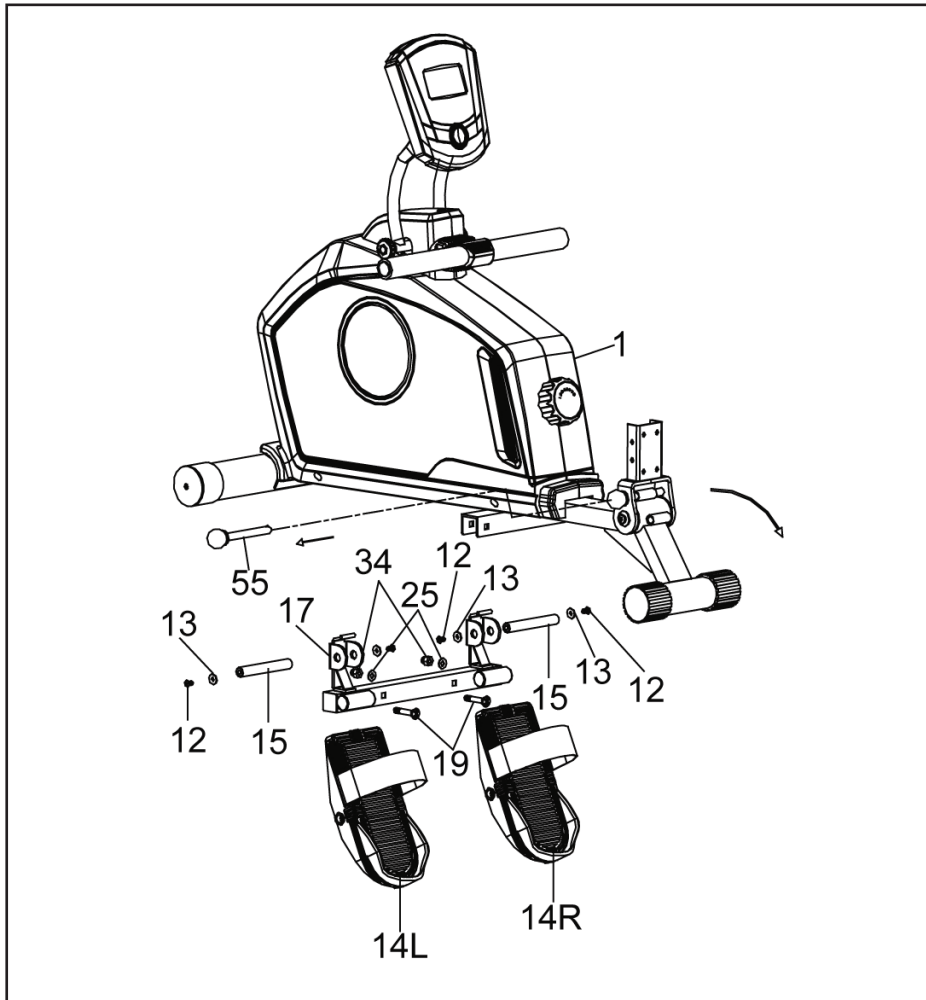


2 Allen Bolts (#2)
2 Spring Washers (#7)
2 Curved Washers (#6)

1. Attach the front stabilizer (3) to the main frame (1). Secure using two allen bolts (2), two curve washers (6) and two spring washers (7).
2. Connect the computer sensor wire (21) to the back of the computer (9).
3. Attach the computer (9) to the computer bracket (62) and fasten with two screws (10).
4. NOTE: Ensure that the wires are not pinched behind the computer.

2 Attaching Pedals

Hardware Step 2

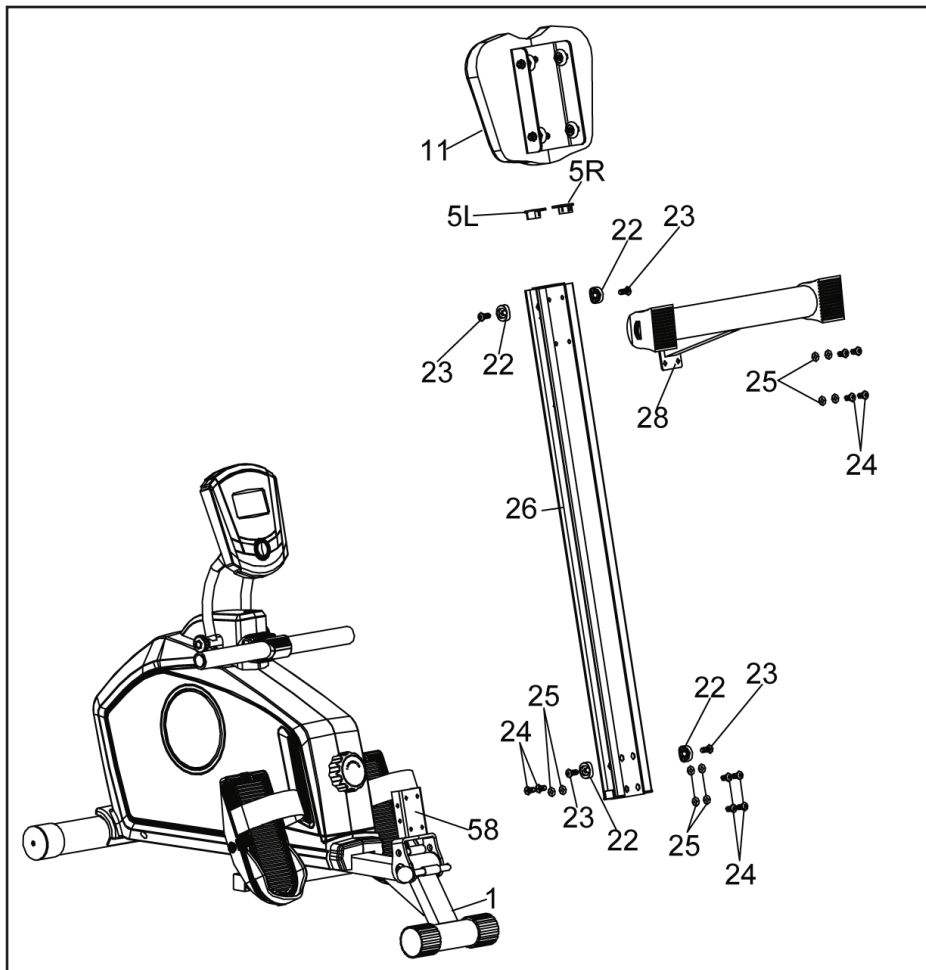


2 Carriage Bolt (#19)
Left Pedal (#14L)
Right Pedals (#14R)
2 Axle for Pedal (15)
2 Allen Bolt (#12)
2 Washers (13)

1. Attach the pedal support tube (17) to the bottom of main frame (1). Secure using two sets of carriage bolt (19), washer (25) and domed nut (34).
2. Attach the left pedal (14L) to the left bracket of pedal support tube (17). Secure using one axle for pedal (15), two sets of allen bolt (12) and washer (13).
3. Repeat the same procedure for right pedal.
4. Pull out the lock pin (55) from pivot on u type connect tube (58). Flip down the bracket and insert the lock pin (55) back to the pivot to lock the bracket in horizontal position.

3 Attaching Sliding Rail Frame

Hardware Step 3

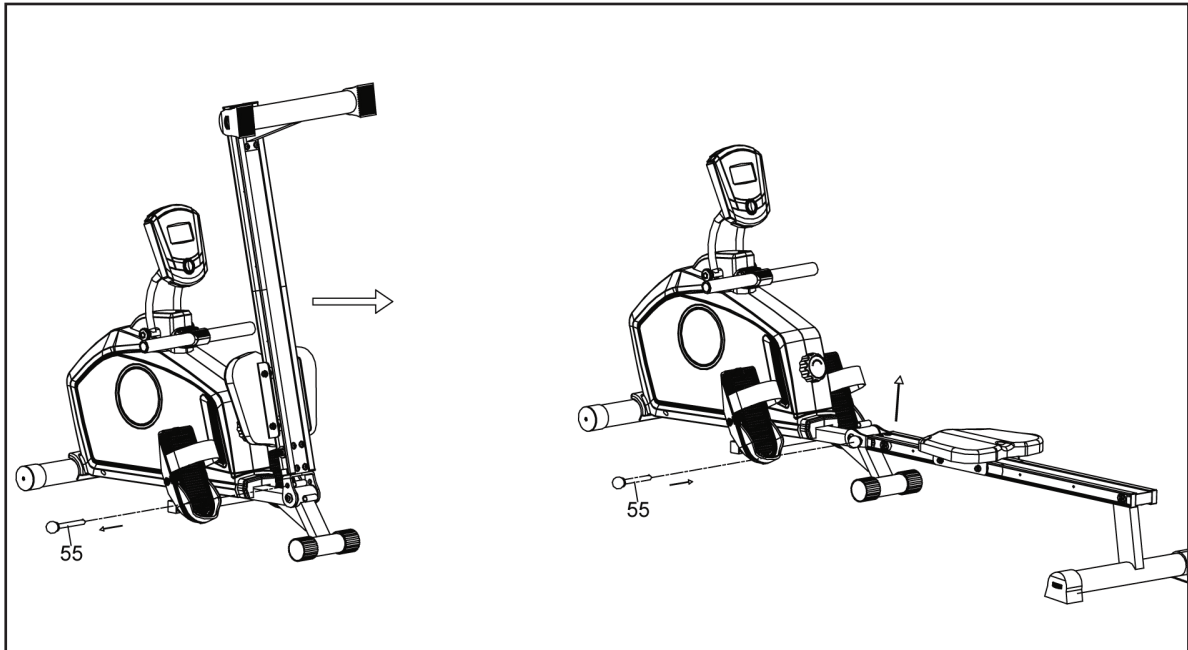


10 Allen Bolt (#4)
10 Washers (#25)
4 Allen Bolt (#23)

1. Insert the sliding rail (26) to the u type connect tube (58). Secure using four sets of allen bolt (24) and washer (25) on the bottom , two sets of allen bolt (24) and washer (25) on the top.
2. Attach collar (22) to each side of the track on this end of sliding rail (26). Secure using one allen bolt (23).
3. Slide the Seat (11) onto the sliding rail.
4. Repeat same procedure for other two collars (22) to the other end of sliding rail (26).
5. Attach the end cap for sliding rail (5L/R) to the back of sliding rail (26).
6. Attach the rear stabilizer (28) to sliding rail (26). Secure using four sets of allen bolt (24) and washer (25).

4 Folding Rower

Hardware Step 4



1. Pull out the lock pin (55) and lift up the sliding rail to unfold the rower.

Operation of Your Console

ERG200 Console



Key Functions

BUTTONS:

MODE: Press to select the desired function between: Scan, Time, Count, Calories and Total Count.

SET: Press to set the values of time, count and calories

RESET: Press to reset your function value to zero.

Functions

TIME: Display your elapsed workout time up to 99:59

COUNT: Accumulates total working strides during your workout from 0 up to 9999.

CALORIE: Displays the cumulative calories burned at any given time during your workout up to 999 kcal. This data is a rough guide for comparison of different exercise session which cannot be used as medical treatment)

TOTAL COUNT: Displays the total cumulative number of strides

NOTE:

1. Monitor uses 2 AA battery

2. If the monitor is illegible or partial segments appear replace the batteries

3. Computer automatically shut down after 4 minutes without any signal input.

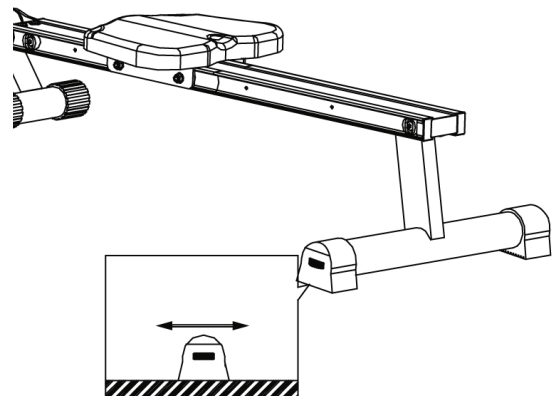
The monitor will turn on automatically by pressing any key or starting your exercise program.

The monitor will turn on automatically by pressing any key or starting your exercise program.

User Direction

HOW TO MOVE THE ROWER

The rower can be easily moved from room to room. Remove the lock pin, fold the sliding rail up and reinsert Pin to secure the sliding rail in position. Grasp the rear support tube and pulling back on tube, tip machine towards you.



HOW TO LEVEL THE ROWER

The rower is equipped with adjustable end caps. If the unit is wobbly, please turn the leveling caps on the rear stabilizer to level the unit.

Trouble Shooting

Problem	Cause	Solution
Monitor does not display	Battery not Installed	Install Battery
	Computer Wires not connected	Ensure the computer wires are connected properly at the upright and computer
No speed or distance displays on the monitor	Sensor wire not connected	Ensure the computer wires are connected properly at the upright and the computer
	Sensor wire not working properly	Replace sensor wire
	Monitor not working properly	Replace monitor
No tension	Magnetic wheel not working properly	Replace magnetic wheel
	Computer wires not connected properly	Ensure the computer wires are connected properly at the upright and the computer
	Tension needs Adjustment	Turn tension adjustment knob accordingly
Grinding noise	Idler pulley defective	Replace idler pulley
	Flywheel defective	Replace Flywheel
Squealing	V-belt slipping	Adjust v-belt

Manufacturer's Limited Warranty

Effective MAY 25, 2016 - ROWER LIMITED WARRANTY

XTERRA Fitness Inc. warrants all its home use Rower parts for a period of time listed below, from the date of retail sale, as determined by a sales receipt or in the absence of a sales receipt, eighteen (18) months from the original factory shipping date. XTERRA Fitness' responsibilities include providing new or remanufactured parts, at XTERRA Fitness' option, and technical support to our independent dealers and servicing organizations. In the absence of a dealer or service organization, these warranties will be administered by XTERRA Fitness directly to a consumer. The warranty period applies to the following components:

Home Use Limited Warranty

Frame	Parts	Labor
1 Year	1 Year	None

NORMAL RESPONSIBILITIES OF THE CONSUMER

This warranty applies only to products in ordinary household use. The consumer is responsible for the items listed below:

1. The warranty registration card must be completed and returned to the address listed on the card within 10 days of the original purchase to validate the manufacturer's limited warranty or register online at the XTERRA Fitness website.
2. Proper use of the Rower in accordance with the instructions provided in this manual, including maintenance.
3. Proper connection to a power supply of sufficient voltage, replacement of blown fuses, repair of loose connections or defects in house/facility wiring.
4. Expenses for making the Rower accessible for servicing, including any item that was not part of the Rower at the time it was shipped from the factory.
5. Damages to the Rower finish during shipping, installation or following installation.

EXCLUSIONS

This warranty does not cover the following:

1. CONSEQUENTIAL, COLLATERAL, OR INCIDENTAL DAMAGES SUCH AS PROPERTY DAMAGE AND INCIDENTAL EXPENSES RESULTING FROM ANY BREACH OF THIS WRITTEN OR ANY IMPLIED WARRANTY. Note: Some states do not allow the exclusion or limitation of incidental or consequential damages, so this limitation or exclusion may not apply to you.
2. Service call reimbursement to the consumer. Service call reimbursement to the dealer that does not involve malfunction or defects in workmanship or material, for units that are beyond the warranty period, for units that are beyond the service call reimbursement period, for Rowers not requiring component replacement, or Rowers not in ordinary household use.
3. Damages caused by services performed by persons other than authorized XTERRA Fitness service companies, use of parts other than original XTERRA Fitness parts, or external causes such as alterations, modifications, abuse, misuse, accident, improper maintenance, inadequate power supply, or acts of God.
4. Products with original serial numbers that have been removed or altered.
5. Products that have been; sold, transferred, bartered, or given to a third party.
6. Products that are used as store display models.
7. Products that do not have a warranty registration on file at XTERRA Fitness Inc. XTERRA Fitness reserves the right to request proof of purchase if no warranty record exists for the product.
8. Product use in any environment other than a residential setting.
9. THIS WARRANTY IS EXPRESSLY IN LIEU OF ALL OTHER WARRANTIES EXPRESSED OR IMPLIED, INCLUDING THE WARRANTIES OF MERCHANTABILITY AND/OR FITNESS FOR A PARTICULAR PURPOSE.

SERVICE

Keep your bill of sale. Twelve (12) months from the date on the bill of sale or eighteen (18) months from the date of factory shipping as determined by the serial number establishes the warranty period should service be required. If service is performed, it is in your best interest to obtain and keep all receipts. This written warranty gives you specific legal rights. You may also have other rights that vary from state to state. Service under this warranty must be obtained by following these steps, in order:

1. Contact your selling authorized XTERRA Fitness dealer. OR
2. Contact your local authorized XTERRA Fitness service organization.
3. If there is a question as to where to obtain service, contact our service department at (870)333-5500
4. XTERRA Fitness' obligation under this warranty is limited to repairing or replacing, at XTERRA Fitness' option, the product through one of our authorized service centers. All repairs must be preauthorized by XTERRA Fitness. If the product is shipped to a service center freight charges to and from the service center will be the customer's responsibility. For replacement parts shipped while the product is under warranty, the customer will be responsible for shipping and handling charges. For in-home service, the customer will be responsible for a trip charge. There will be an additional trip charge if the customer is located over 100 miles from the nearest service center.
5. The owner is responsible for adequate packaging upon return to XTERRA Fitness. XTERRA Fitness is not responsible for damages in shipping. Make all freight damage claims with the appropriate freight carrier. DO NOT SHIP ANY UNIT TO OUR FACTORY WITHOUT A RETURN AUTHORIZATION NUMBER. All units arriving without a return authorization number will be refused.
6. For any further information, or to contact our service department by mail, send your correspondence to:

XTERRA Fitness, Inc.
P.O. Box 2037
Jonesboro, AR 72402-2037

Product features or specifications as described or illustrated are subject to change without notice. All warranties are made by XTERRA Fitness, Inc. This warranty applies only in the 48 contiguous United States. NOTE: This does not include Alaska or Hawaii.

3000 Nestle Road Jonesboro, AR 72401 - Phone:870-333-5500 - Fax:870-935-7611

www.xterrafitness.com

©2016 All Rights Reserved. ERG200 Owner's Manual