

FITTINGS & HOSE CATALOGUE 2020

VERSION 2.0



**HOSE MANIA
19 VINNICOMBE DRIVE
CANNING VALE WA 6155**

**P: (08) 9256 4550
F: (08) 9256 4009
E: sales@hosemania.com.au
W: www.hosemania.com.au**

FITTINGS & HOSE CATALOGUE - VERSION 2.0 (2020)

SCREWED FITTINGS Gal Mal, Black Steel, Nylon, Stainless Steel, Crimp Tails	4-11
BRASS SCREWED	12-15
BRASS AIRLINE	16-17
COMPRESSION FITTINGS (BRASS & STAINLESS STEEL) Brass, Stainless Steel, Copper Tube, Stainless Steel Tube	18-20
METRIC PUSHFIT	21-22
IMPERIAL PUSHFIT	23
TUBE Nylon Metric & Imperial, Polyurethane	24
QUICK RELEASE Nitto, Jamec, Airbrake, Parker, Stucchi	25-26
BLOW GUNS & FILTER REGULATORS	27
PRESSURE WASHER & RECTUS COUPLINGS	28
AIRLINE ACCESSORIES Relief Valves, Needle Valves, Manifolds, Silencer	29
TYRE ACCESSORIES	30
SEALANTS Loctite, Thread Tape	31
GAUGES	32-33
BRASS VALVES	34-36
PLASTIC & STEEL VALVES	37
STAINLESS STEEL VALVES	38-39
CAMLOCKS	40-43
CLAMPS	44-47

FITTINGS & HOSE CATALOGUE - VERSION 2.0 (2020)

48-49	MOUNTINGS P-Clips, U-Bolts, Stauff Clamps, Cable Ties
50-51	NUTS & BOLTS
52	PIPE Galvanised, Black Steel, Stainless Steel
53-57	BUTTWELD, FLANGES & PIPE FITTINGS Flange P.C.D. Chart, Rubber Gaskets, Novus Gaskets
58	MINING Type 'A', Surelock
59-60	SHOULDERED / VICTAULIC FITTINGS
61	DEWATERING Strainers, Footvalves, Hosetails
62-63	FIRE FIGHTING & NOZZLES
64	HOSE REELS
65-67	PVC PRESSURE HOSE
68	LAYFLAT & GARDEN HOSE
69-72	PVC SUCTION HOSE
73-74	EXTRUDED RUBBER HOSE
75-77	WRAPPED RUBBER HOSE
78-79	SILICONE HOSE
79	SILICONE / RUBBER ELBOWS
80	RADIATOR HOSE
81-83	DUCTING

SCREWED FITTINGS



HEX NIPPLE				
SIZE	GAL MAL	BLACK STEEL	NYLON	S/STEEL
1/8"	P01-003	R01-003	V01-003	W01-003
1/4"	P01-006	R01-006	V01-006	W01-006
3/8"	P01-010	R01-010	V01-010	W01-010
1/2"	P01-012	R01-012	V01-012	W01-012
3/4"	P01-020	R01-020	V01-020	W01-020
1"	P01-025	R01-025	V01-025	W01-025
1.1/4"	P01-032	R01-032	V01-032	W01-032
1.1/2"	P01-040	R01-040	V01-040	W01-040
2"	P01-050	R01-050	V01-050	W01-050
2.1/2"	P01-065	R01-065	V01-065	W01-065
3"	P01-080	R01-080	V01-080	W01-080
4"	P01-100	R01-100	V01-100	W01-100
5"	-	-	-	-
6"	P01-150	-	-	-

SOCKET				
SIZE	GAL MAL	BLACK STEEL	NYLON	S/STEEL
1/8"	P03-003	R03-003	-	W03-003
1/4"	P03-006	R03-006	-	W03-006
3/8"	P03-010	R03-010	-	W03-010
1/2"	P03-012	R03-012	V03-012	W03-012
3/4"	P03-020	R03-020	V03-020	W03-020
1"	P03-025	R03-025	V03-025	W03-025
1.1/4"	P03-032	R03-032	V03-032	W03-032
1.1/2"	P03-040	R03-040	V03-040	W03-040
2"	P03-050	R03-050	V03-050	W03-050
2.1/2"	P03-065	R03-065	V03-065	W03-065
3"	P03-080	R03-080	V03-080	W03-080
4"	P03-100	R03-100	V03-100	W03-100
5"	P03-125	R03-125	-	-
6"	P03-150	R03-150	-	-



CAP				
SIZE	GAL MAL	BLACK STEEL	NYLON	S/STEEL
1/8"	-	-	-	W06-003
1/4"	P06-006	R06-006	-	W06-006
3/8"	P06-010	R06-010	-	W06-010
1/2"	P06-012	R06-012	V06-012	W06-012
3/4"	P06-020	R06-020	V06-020	W06-020
1"	P06-025	R06-025	V06-025	W06-025
1.1/4"	P06-032	R06-032	V06-032	W06-032
1.1/2"	P06-040	R06-040	V06-040	W06-040
2"	P06-050	R06-050	V06-050	W06-050
2.1/2"	P06-065	R06-065	V06-065	W06-065
3"	P06-080	R06-080	V06-080	W06-080
4"	P06-100	R06-100	V06-100	W06-100
6"	P06-150	R03-150	-	-

PLUG				
SIZE	GAL MAL	BLACK STEEL	NYLON	S/STEEL
1/8"	P07-003	R07-003	V07-003	W07-003
1/4"	P07-006	R07-006	V07-006	W07-006
3/8"	P07-010	R07-010	V07-010	W07-010
1/2"	P07-012	R07-012	V07-012	W07-012
3/4"	P07-020	R07-020	V07-020	W07-020
1"	P07-025	R07-025	V07-025	W07-025
1.1/4"	P07-032	R07-032	V07-032	W07-032
1.1/2"	P07-040	R07-040	V07-040	W07-040
2"	P07-050	R07-050	V07-050	W07-050
2.1/2"	P07-065	R07-065	V07-065	W07-065
3"	P07-080	R07-080	V07-080	W07-080
4"	P07-100	R07-100	V07-100	W07-100
6"	P07-150	-	-	-

MOST FITTINGS ALSO AVAILABLE IN 3000lb, STAINLESS STEEL & BLACK STEEL, NPT & BSP



90° F/F ELBOW				
SIZE	GAL MAL	BLACK STEEL	NYLON	S/STEEL
1/8"	P09-003	R09-003	-	W09-003
1/4"	P09-006	R09-006	-	W09-006
3/8"	P09-010	R09-010	-	W09-010
1/2"	P09-012	R09-012	V09-012	W09-012
3/4"	P09-020	R09-020	V09-020	W09-020
1"	P09-025	R09-025	V09-025	W09-025
1.1/4"	P09-032	R09-032	V09-032	W09-032
1.1/2"	P09-040	R09-040	V09-040	W09-040
2"	P09-050	R09-050	V09-050	W09-050
2.1/2"	P09-065	R09-065	V09-065	W09-065
3"	P09-080	R09-080	V09-080	W09-080
4"	P09-100	R09-100	V09-100	W09-100

90° M/F ELBOW				
SIZE	GAL MAL	BLACK STEEL	NYLON	S/STEEL
1/8"	-	-	-	W10-003
1/4"	P10-006	R10-006	-	W10-006
3/8"	P10-010	R10-010	-	W10-010
1/2"	P10-012	R10-012	V10-012	W10-012
3/4"	P10-020	R10-020	V10-020	W10-020
1"	P10-025	R10-025	V10-025	W10-025
1.1/4"	P10-032	R10-032	V10-032	W10-032
1.1/2"	P10-040	R10-040	V10-040	W10-040
2"	P10-050	R10-050	V10-050	W10-050
2.1/2"	P10-065	R10-065	-	W10-065
3"	P10-080	R10-080	-	W10-080
4"	P10-100	R10-100	-	W10-100



45° F/F ELBOW				
SIZE	GAL MAL	BLACK STEEL	NYLON	S/STEEL
1/8"	-	-	-	W12-003
1/4"	P12-006	R12-006	-	W12-006
3/8"	P12-010	R12-010	-	W12-010
1/2"	P12-012	R12-012	-	W12-012
3/4"	P12-020	R12-020	-	W12-020
1"	P12-025	R12-025	-	W12-025
1.1/4"	P12-032	R12-032	-	W12-032
1.1/2"	P12-040	R12-040	-	W12-040
2"	P12-050	R12-050	-	W12-050
2.1/2"	P12-065	R12-065	-	W12-065
3"	P12-080	R12-080	-	W12-080
4"	P12-100	R12-100	-	W12-100

45° M/F ELBOW				
SIZE	GAL MAL	BLACK STEEL	NYLON	S/STEEL
1/8"	-	-	-	W13-003
1/4"	P13-006	-	-	W13-006
3/8"	P13-010	-	-	W13-010
1/2"	P13-012	-	-	W13-012
3/4"	P13-020	-	-	W13-020
1"	P13-025	-	-	W13-025
1.1/4"	P13-032	-	-	W13-032
1.1/2"	P13-040	-	-	W13-040
2"	P13-050	-	-	W13-050
2.1/2"	P13-065	-	-	W13-065
3"	P13-080	-	-	W13-080
4"	P13-100	-	-	W13-100

MOST FITTINGS ALSO AVAILABLE IN 3000lb, STAINLESS STEEL & BLACK STEEL, NPT & BSP



REDUCING HEX NIPPLE				
SIZE	GAL MAL	BLACK STEEL	NYLON	S/STEEL
1/4" x 1/8"	P02-0603	R02-0603	V02-0603	W02-0603
3/8" x 1/8"	P02-1003	R02-1003	V02-1003	W02-1003
3/8" x 1/4"	P02-1006	R02-1006	V02-1006	W02-1006
1/2" x 1/8"	-	-	-	W02-1203
1/2" x 1/4"	P02-1206	R02-1206	V02-1206	W02-1206
1/2" x 3/8"	P02-1210	R02-1210	V02-1210	W02-1210
3/4" x 1/4"	P02-2006	R02-2006	-	W02-2006
3/4" x 3/8"	P02-2010	R02-2010	V02-2010	W02-2010
3/4" x 1/2"	P02-2012	R02-2012	V02-2012	W02-2012
1" x 1/2"	P02-2512	R02-2512	V02-2512	W02-2512
1" x 3/4"	P02-2520	R02-2520	V02-2520	W02-2520
1.1/4" x 1/2"	P02-3212	-	-	-
1.1/4" x 3/4"	P02-3220	R02-3220	V02-3220	W02-3220
1.1/4" x 1"	P02-3225	R02-3225	V02-3225	W02-3225
1.1/2" x 1/2"	P02-4012	-	-	-
1.1/2" x 3/4"	P02-4020	R02-4020	V02-4020	W02-4020
1.1/2" x 1"	P02-4025	R02-4025	V02-4025	W02-4025
1.1/2" x 1.1/4"	P02-4032	R02-4032	V02-4032	W02-4032
2" x 1/2"	P02-5012	-	-	-
2" x 3/4"	P02-5020	R02-5020	V02-5020	W02-5020
2" x 1"	P02-5025	R02-5025	V02-5025	W02-5025
2" x 1.1/4"	P02-5032	R02-5032	V02-5032	W02-5032
2" x 1.1/2"	P02-5040	R02-5040	V02-5040	W02-5040
2.1/2" x 1.1/4"	P02-6532	-	V02-6532	-
2.1/2" x 1.1/2"	P02-6540	-	V02-6540	-
2.1/2" x 2"	P02-6550	R02-6550	V02-6550	W02-6550
3" x 2"	P02-8050	R02-8050	V02-8050	W02-8050
3" x 2.1/2"	P02-8065	R02-8065	V02-8065	W02-8065
4" x 2"	P02-9450	-	-	W02-9450
4" x 2.1/2"	P02-9465	-	-	W02-9465
4" x 3"	P02-9480	R02-9480	V02-9480	W02-9480
6" x 4"	P02-9694	-	-	-

MOST FITTINGS ALSO AVAILABLE IN 3000lb, STAINLESS STEEL & BLACK STEEL, NPT & BSP

REDUCING BUSH				
SIZE	GAL MAL	BLACK STEEL	NYLON	S/STEEL
1/4" x 1/8"	P05-0603	R05-0603	-	W05-0603
3/8" x 1/8"	P05-1003	R05-1003	-	W05-1003
3/8" x 1/4"	P05-1006	R05-1006	-	W05-1006
1/2" x 1/8"	-	-	V05-1203	W05-1203
1/2" x 1/4"	P05-1206	R05-1206	V05-1206	W05-1206
1/2" x 3/8"	P05-1210	R05-1210	V05-1210	W05-1210
3/4" x 1/4"	P05-2006	-	V05-2006	W05-2006
3/4" x 3/8"	P05-2010	R05-2010	V05-2010	W05-2010
3/4" x 1/2"	P05-2012	R05-2012	V05-2012	W05-2012
1" x 1/4"	P05-2506	R05-2506	V05-2506	-
1" x 3/8"	P05-2510	R05-2510	V05-2510	-
1" x 1/2"	P05-2512	R05-2512	V05-2512	W05-2512
1" x 3/4"	P05-2520	R05-2520	V05-2520	W05-2520
1.1/4" x 1/2"	P05-3212	R05-3212	V05-3212	-
1.1/4" x 3/4"	P05-3220	R05-3220	V05-3220	W05-3220
1.1/4" x 1"	P05-3225	R05-3225	V05-3225	W05-3225
1.1/2" x 1/2"	P05-4012	R05-4012	V05-4012	-
1.1/2" x 3/4"	P05-4020	R05-4020	V05-4020	W05-4020
1.1/2" x 1"	P05-4025	R05-4025	V05-4025	W05-4025
1.1/2" x 1.1/4"	P05-4032	R05-4032	V05-4032	W05-4032
2" x 1/2"	P05-5012	-	-	-
2" x 3/4"	P05-5020	R05-5020	V05-5020	W05-5020
2" x 1"	P05-5025	R05-5025	V05-5025	W05-5025
2" x 1.1/4"	P05-5032	R05-5032	V05-5032	W05-5032
2" x 1.1/2"	P05-5040	R05-5040	V05-5040	W05-5040
2.1/2" x 1.1/4"	P05-6532	-	V05-6532	-
2.1/2" x 1.1/2"	P05-6540	-	V05-6540	-
2.1/2" x 2"	P05-6550	R05-6550	V05-6550	W05-6550
3" x 2"	P05-8050	R05-8050	V05-8050	W05-8050
3" x 2.1/2"	P05-8065	R05-8065	V05-8065	W05-8065
4" x 2"	P05-9450	R05-9450	V05-9450	-
4" x 2.1/2"	P05-9465	R05-9465	V05-9465	-
4" x 3"	P05-9480	R05-9480	V05-9480	W05-9480
5" x 4"	P05-9594	-	-	-
6" x 4"	P05-9694	-	-	-
6" x 5"	P05-9695	-	-	-
8" x 6"	P05-9896	-	-	-



MOST FITTINGS ALSO AVAILABLE IN 3000lb, STAINLESS STEEL & BLACK STEEL, NPT & BSP



TEE				
SIZE	GAL MAL	BLACK STEEL	NYLON	S/STEEL
1/8"	P18-003	R18-003	-	W18-003
1/4"	P18-006	R18-006	-	W18-006
3/8"	P18-010	R18-010	-	W18-010
1/2"	P18-012	R18-012	V18-012	W18-012
3/4"	P18-020	R18-020	V18-020	W18-020
1"	P18-025	R18-025	V18-025	W18-025
1.1/4"	P18-032	R18-032	V18-032	W18-032
1.1/2"	P18-040	R18-040	V18-040	W18-040
2"	P18-050	R18-050	V18-050	W18-050
2.1/2"	P18-065	R18-065	V18-065	W18-065
3"	P18-080	R18-080	V18-080	W18-080
4"	P18-100	R18-100	V18-100	W18-100

BARREL UNION				
SIZE	GAL MAL	BLACK STEEL	NYLON	S/STEEL
1/8"	-	-	-	W17-003
1/4"	P17-006	R17-006	-	W17-006
3/8"	P17-010	R17-010	-	W17-010
1/2"	P17-012	R17-012	V17-012	W17-012
3/4"	P17-020	R17-020	V17-020	W17-020
1"	P17-025	R17-025	V17-025	W17-025
1.1/4"	P17-032	R17-032	V17-032	W17-032
1.1/2"	P17-040	R17-040	V17-040	W17-040
2"	P17-050	R17-050	V17-050	W17-050
2.1/2"	P17-065	R17-065	-	W17-065
3"	P17-080	R17-080	-	W17-080
4"	P17-100	R17-100	-	W17-100



THREADED FLANGE TABLE 'E'				
SIZE	GAL MAL	BLACK STEEL	GALV STEEL	S/STEEL
1/2"	P46-012	RFET-012	RFETG-012	WFET-012
3/4"	P46-020	RFET-020	RFETG-020	WFET-020
1"	P46-025	RFET-025	RFETG-025	WFET-025
1.1/4"	P46-032	RFET-032	RFETG-032	WFET-032
1.1/2"	P46-040	RFET-040	RFETG-040	WFET-040
2"	P46-050	RFET-050	RFETG-050	WFET-050
2.1/2"	P46-065	RFET-065	RFETG-065	WFET-065
3"	P46-080	RFET-080	RFETG-080	WFET-080
4"	P46-100	RFET-100	RFETG-100	WFET-100
6"	P46-150	RFET-150	RFETG-150	WFET-150

LOCKNUT / BACKNUT			
SIZE	GAL MAL	S/STEEL HEX	S/STEEL BACK
1/8"	-	W08-003	-
1/4"	-	W08-006	-
3/8"	-	W08-010	-
1/2"	P08-012	W08-012	W08L-012
3/4"	P08-020	W08-020	W08L-020
1"	P08-025	W08-025	W08L-025
1.1/4"	P08-032	W08-032	W08L-032
1.1/2"	P08-040	W08-040	W08L-040
2"	P08-050	W08-050	W08L-050
2.1/2"	P08-065	W08-065	-
3"	P08-080	W08-080	-
4"	P08-100	W08-100	-

MOST FITTINGS ALSO AVAILABLE IN 3000lb, STAINLESS STEEL & BLACK STEEL, NPT & BSP

REDUCING SOCKET				
SIZE	GAL MAL	BLACK STEEL	NYLON	S/STEEL
1/4" x 1/8"	-	R04-0603	-	-
3/8" x 1/4"	P04-1006	R04-1006	-	-
1/2" x 1/4"	P04-1206	R04-1206	-	-
1/2" x 3/8"	P04-1210	R04-1210	-	W04-1210
3/4" x 1/4"	P04-2006	-	-	-
3/4" x 3/8"	P04-2010	R04-2010	-	-
3/4" x 1/2"	P04-2012	R04-2012	V04-2012	W04-2012
1" x 3/8"	P04-2510	R04-2510	-	W04-2510
1" x 1/2"	P04-2512	R04-2512	V04-2512	W04-2512
1" x 3/4"	P04-2520	R04-2520	V04-2520	W04-2520
1.1/4" x 1/2"	P04-3212	-	-	W04-3212
1.1/4" x 3/4"	P04-3220	R04-3220	V04-3220	W04-3220
1.1/4" x 1"	P04-3225	R04-3225	V04-3225	W04-3225
1.1/2" x 1/2"	P04-4012	-	-	W04-4012
1.1/2" x 3/4"	P04-4020	R04-4020	V04-4020	W04-4020
1.1/2" x 1"	P04-4025	R04-4025	V04-4025	W04-4025
1.1/2" x 1.1/4"	P04-4032	R04-4032	V04-4032	W04-4032
2" x 1/2"	P04-5012	-	-	W04-5012
2" x 3/4"	P04-5020	R04-5020	V04-5020	W04-5020
2" x 1"	P04-5025	R04-5025	V04-5025	W04-5025
2" x 1.1/4"	P04-5032	R04-5032	V04-5032	W04-5032
2" x 1.1/2"	P04-5040	R04-5040	V04-5040	W04-5040
2.1/2" x 1"	P04-6525	-	-	-
2.1/2" x 1.1/4"	P04-6532	-	-	-
2.1/2" x 1.1/2"	P04-6540	-	-	-
2.1/2" x 2"	P04-6550	R04-6550	V04-6550	W04-6550
3" x 1"	P04-8025	-	-	-
3" x 1.1/4"	P04-8032	-	-	-
3" x 1.1/2"	P04-8040	-	-	-
3" x 2"	P04-8050	R04-8050	V04-8050	W04-8050
3" x 2.1/2"	P04-8065	R04-8065	V04-8065	W04-8065
4" x 2"	P04-9450	R04-9450	-	-
4" x 2.1/2"	P04-9465	R04-9465	-	-
4" x 3"	P04-9480	R04-9480	V04-9480	W04-9480
5" x 4"	P04-9594	-	-	-
6" x 4"	P04-9694	-	-	-
6" x 5"	P04-9695	-	-	-
8" x 6"	P04-9896	-	-	-



MOST FITTINGS ALSO AVAILABLE IN 3000lb, STAINLESS STEEL & BLACK STEEL, NPT & BSP



MALE HOSETAIL

SIZE	ZINC STEEL	BRASS	S/STEEL	NYLON
1/8"	-	FH3-0303	W21-003	V21-003
1/4"	-	FH3-0606	W21-006	V21-006
3/8"	-	FH3-1010	W21-010	V21-010
1/2"	RZ21-012	FH3-1212	W21-012	V21-012
3/4"	RZ21-020	S21-020	W21-020	V21-020
1"	RZ21-025	S21-025	W21-025	V21-025
1.1/4"	RZ21-032	S21-032	W21-032	V21-032
1.1/2"	RZ21-040	S21-040	W21-040	V21-040
2"	RZ21-050	S21-050	W21-050	V21-050
2.1/2"	RZ21-065	S21-065	W21-065	V21-065
3"	RZ21-080	S21-080	W21-080	V21-080
4"	RZ21-100	S21-100	W21-100	V21-100
5"	RZ21-125	-	-	-
6"	RZ21-150	-	-	-

TANK & SKIN FITTINGS

SIZE	TANK NYLON	SKIN NYLON	SKIN S/STEEL
1/2"	V22T-012	V22-012	W22-012
3/4"	V22T-020	V22-020	W22-020
1"	V22T-025	V22-025	W22-025
1.1/4"	V22T-032	V22-032	W22-032
1.1/2"	V22T-040	V22-040	W22-040
2"	V22T-050	V22-050	W22-050
2.1/2"	-	V22-065	W22-065
3"	-	V22-080	W22-080
4"	-	V22-100	W22-100



ALLTHREAD

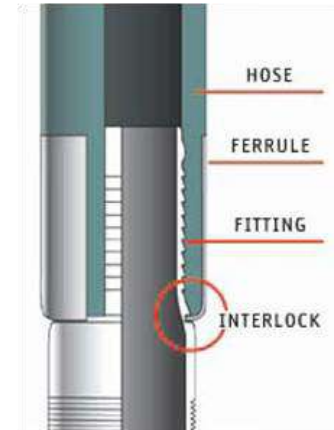
SIZE	S/STEEL
1/2"	W01L-012
3/4"	W01L-020
1"	W01L-025
1.1/4"	W01L-032
1.1/2"	W01L-040
2"	W01L-050



NUT & TAIL

SIZE	BRASS	S/STEEL	NYLON
1/4"	FH5-0606	-	-
3/8"	FH5-1010	-	-
1/2"	FH5-1212	W25-012	V25-012
3/4"	S25-020	W25-020	V25-020
1"	S25-025	W25-025	V25-025
1.1/4"	S25-032	W25-032	V25-032
1.1/2"	S25-040	W25-040	V25-040
2"	S25-050	W25-050	V25-050
2.1/2"	S25-065	-	V25-065
3"	S25-080	-	V25-080
4"	S25-100	-	V25-100

CRIMP FERRULES			
TO SUIT HOSE SIZE	I.D. (mm)	MILD STEEL ZINC PLATED	S/STEEL 304
19	33.3	CRZ-2033	CRS-2033
	34.9	-	CRS-035
25	39.7	CRZ-2539	CRS-2539
	42.9	-	CRS-042
32	46.0	-	CRS-3246
38	54.0	CRZ-4054	CRS-4054
	57.0	CRZ-057	CRS-057
51	68.3	CRZ-5068	CRS-5068
	69.8	-	CRS-070
64	79.4	-	CRS-6579
76	96.9	CRZ-7597	CRS-7597
102	123.8	CRZ-94124	CRS-94124
	127.0	CRZ-127	CRS-127
152	168.3	-	CRS-96168
	171.5	-	CRS-96171



BRAID RING	
I.D. (mm)	S/S BRAID RING
14.0	CRB-014
16.0	CRB-016
17.5	CRB-017
21.0	CRB-021
27.0	CRB-027
30.0	CRB-030
39.0	CRB-039



CRIMP HOSETAILS				
SIZE	ZINC		S/STEEL	
	BSP	NPT	BSP	NPT
1"	RZ21C-025	RZ21N-025	W21C-025	W21N-025
1.1/4"	RZ21C-032	RZ21N-032	W21C-032	W21N-032
1.1/2"	RZ21C-040	RZ21N-040	W21C-040	W21N-040
2"	RZ21C-050	RZ21N-050	W21C-050	W21N-050
2.1/2"	RZ21C-065	RZ21N-065	W21C-065	W21N-065
3"	RZ21C-080	RZ21N-080	W21C-080	W21N-080
4"	RZ21C-100	RZ21N-100	W21C-100	W21N-100
5"	RZ21C-125	RZ21N-125	W21C-125	W21N-125
6"	RZ21C-150	RZ21N-150	W21C-150	W21N-150



BRASS SCREWED



NIPPLE	
SIZE	CODE
1/8"	Y01-003
1/4"	Y01-006
3/8"	Y01-010
1/2"	Y01-012
3/4"	Y01-020
1"	Y01-025



SOCKET	
SIZE	CODE
1/8"	Y03-003
1/4"	Y03-006
3/8"	Y03-010
1/2"	Y03-012
3/4"	Y03-020
1"	Y03-025



PLUG	
SIZE	CODE
1/8"	Y07-003
1/4"	Y07-006
3/8"	Y07-010
1/2"	Y07-012
3/4"	Y07-020
1"	Y07-025



CAP	
SIZE	CODE
1/8"	Y06-003
1/4"	Y06-006
3/8"	Y06-010
1/2"	Y06-012
3/4"	Y06-020
1"	Y06-025



90° F/F EXT	
SIZE	CODE
1/8"	Y09-003
1/4"	Y09-006
3/8"	Y09-010
1/2"	Y09-012
3/4"	Y09-020
1"	Y09-025



90° M/F EXT	
SIZE	CODE
1/8"	Y10-003
1/4"	Y10-006
3/8"	Y10-010
1/2"	Y10-012
3/4"	Y10-020
1"	Y10-025



90° F/F CAST	
SIZE	CODE
1/8"	Y09C-003
1/4"	Y09C-006
3/8"	Y09C-010
1/2"	Y09C-012
3/4"	Y09C-020
1"	Y09C-025



90° M/M EXT	
SIZE	CODE
1/8"	Y10M-003
1/4"	Y10M-006
3/8"	Y10M-010
1/2"	Y10M-012
3/4"	Y10M-020



45° F/F EXT	
SIZE	CODE
1/8"	Y12-003
1/4"	Y12-006
3/8"	Y12-010
1/2"	Y12-012



45° M/F EXT	
SIZE	CODE
1/8"	Y12MF-003
1/4"	Y12MF-006
3/8"	Y12MF-010
1/2"	Y12MF-012



LOCKNUT	
SIZE	CODE
1/8"	Y08-003
1/4"	Y08-006
3/8"	Y08-010
1/2"	Y08-012



Y-PIECE	
SIZE	CODE
1/8"	Y13-003
1/4"	Y13-006
3/8"	Y13-010
1/2"	Y13-012

MOST FITTINGS ALSO AVAILABLE IN NPT



F/F TEE EXT	
SIZE	CODE
1/8"	Y18-003
1/4"	Y18-006
3/8"	Y18-010
1/2"	Y18-012
3/4"	Y18-020

M/M TEE EXT	
SIZE	CODE
1/8"	Y18M-003
1/4"	Y18M-006
3/8"	Y18M-010
1/2"	Y18M-012
3/4"	Y18M-020

F/F TEE CAST	
SIZE	CODE
1/8"	Y18C-003
1/4"	Y18C-006
3/8"	Y18C-010
1/2"	Y18C-012
3/4"	Y18C-020

CROSS	
SIZE	CODE
1/8"	Y19-003
1/4"	Y19-006
3/8"	Y19-010
1/2"	Y19-012

REDUCING BUSH	
SIZE	CODE
1/4" x 1/8"	Y05-0603
3/8" x 1/8"	Y05-1003
3/8" x 1/4"	Y05-1006
1/2" x 1/8"	Y05-1203
1/2" x 1/4"	Y05-1206
1/2" x 3/8"	Y05-1210
3/4" x 1/4"	Y05-2006
3/4" x 3/8"	Y05-2010
3/4" x 1/2"	Y05-2012
1" x 1/4"	Y05-2506
1" x 3/8"	Y05-2510
1" x 1/2"	Y05-2512
1" x 3/4"	Y05-2520



REDUCING NIPPLE	
SIZE	CODE
1/4" x 1/8"	Y02-0603
3/8" x 1/8"	Y02-1003
3/8" x 1/4"	Y02-1006
1/2" x 1/8"	Y02-1203
1/2" x 1/4"	Y02-1206
1/2" x 3/8"	Y02-1210
3/4" x 1/4"	Y02-2006
3/4" x 3/8"	Y02-2010
3/4" x 1/2"	Y02-2012
1" x 1/2"	Y02-2512
1" x 3/4"	Y02-2520



REDUCING SOCKET	
SIZE	CODE
1/4" x 1/8"	Y04-0603
3/8" x 1/8"	Y04-1003
3/8" x 1/4"	Y04-1006
1/2" x 1/8"	Y04-1203
1/2" x 1/4"	Y04-1206
1/2" x 3/8"	Y04-1210
3/4" x 3/8"	Y04-2010
3/4" x 1/2"	Y04-2012
1" x 3/4"	Y04-2520



F/M ADAPTOR	
SIZE	CODE
1/8" x 1/8"	Y86-003
1/4" x 1/4"	Y86-006
3/8" x 3/8"	Y86-010
1/2" x 1/2"	Y86-012
1/4" x 1/8"	Y86-0603
3/8" x 1/8"	Y86-1003
3/8" x 1/4"	Y86-1006
1/2" x 1/4"	Y86-1206
1/2" x 3/8"	Y86-1210
3/4" x 1/2"	Y86-2012
1" x 1/2"	Y86-2512
1" x 3/4"	Y86-2520



MOST FITTINGS ALSO AVAILABLE IN NPT



BRASS ALLTHREAD		
SIZE	150mm	300mm
1/4"	FBAT-006	FBAT-L06
3/8"	FBAT-010	FBAT-L10
1/2"	FBAT-012	FBAT-L12
3/4"	FBAT-020	FBAT-L20
1"	FBAT-025	FBAT-L25



EXTENDED NIPPLE	
SIZE	CODE
1/8" x 40mm	Y26-0340
1/8" x 50mm	Y26-0350
1/8" x 75mm	Y26-0375
1/4" x 40mm	Y26-0640
1/4" x 50mm	Y26-0650
1/4" x 75mm	Y26-0675



BULKHEAD	
SIZE	CODE
1/8"	Y22-003
1/4"	Y22-006
3/8"	Y22-010
1/2"	Y22-012



BSP MALE x NPT FEMALE	
SIZE	CODE
1/8"	Y86BN-003
1/4"	Y86BN-006
3/8"	Y86BN-010



NPT MALE x BSP FEMALE	
SIZE	CODE
1/8"	Y86NB-003
1/4"	Y86NB-006
3/8"	Y86NB-010



CROSSOVER NIPPLE	
SIZE	CODE
1/8"	Y01BN-003
1/4"	Y01BN-006
3/8"	Y01BN-010



F/F BRASS LEVER TAP	
SIZE	CODE
1/8"	FLT-003
1/4"	FLT-006



M/F BRASS LEVER TAP	
SIZE	CODE
1/8"	FLTMF-003
1/4"	FLTMF-006



SOCKET METRIC FEMALE x BSP FEMALE		
METRIC	BSP	CODE
M12x1.5	1/8"	YM02-1203
M12x1.5	1/4"	YM02-1206
M14x1.5	1/4"	YM02-1406
M16x1.5	1/4"	YM02-1606
M18x1.5	1/4"	YM02-1806
M20x1.5	1/4"	YM02-2006
M20x1.5	3/8"	YM02-2010
M22x1.5	3/8"	YM02-2210
M24x1.5	3/8"	YM02-2410



PLUG METRIC MALE	
METRIC	CODE
M12x1.5	YM07-012
M14x1.5	YM07-014
M16x1.5	YM07-016
M18x1.5	YM07-018
M20x1.5	YM07-020
M22x1.5	YM07-022
M24x1.5	YM07-024



SOCKET METRIC FEMALE	
METRIC	CODE
M12x1.5	YM03-012
M14x1.5	YM03-014
M16x1.5	YM03-016
M18x1.5	YM03-018
M22x1.5	YM03-022



FIXED ADAPTOR METRIC MALE x BSP FEMALE		
METRIC	BSP	CODE
M6x1	1/8"	YM05-0603
M8x1	1/8"	YM05-0803
M10x1.5	1/8"	YM05-1003
M12x1.5	1/8"	YM05-1203
M12x1.5	1/4"	YM05-1206
M14x1.5	1/8"	YM05-1403
M14x1.5	1/4"	YM05-1406
M16x1.5	1/8"	YM05-1603
M16x1.5	1/4"	YM05-1606
M16x1.5	3/8"	YM05-1610
M18x1.5	1/4"	YM05-1806
M20x1.5	1/4"	YM05-2006
M22x1.5	1/4"	YM05-2206
M22x1.5	3/8"	YM05-2210
M24x1.5	3/8"	YM05-2410



NIPPLE METRIC MALE x BSP MALE		
METRIC	BSP	CODE
M12x1.5	1/8"	YM02-1203
M12x1.5	1/4"	YM02-1206
M14x1.5	1/4"	YM02-1406
M16x1.5	1/4"	YM02-1606
M18x1.5	1/4"	YM02-1806
M20x1.5	1/4"	YM02-2006
M20x1.5	3/8"	YM02-2010
M22x1.5	3/8"	YM02-2210
M24x1.5	3/8"	YM02-2410



HOSE TAIL METRIC MALE		
TAIL SIZE	METRIC	CODE
1/4"	M12x1.5	YM21-0612
5/16"	M12x1.5	YM21-0812
5/16"	M14x1.5	YM21-0814
3/8"	M12x1.5	YM21-1012
3/8"	M14x1.5	YM21-1014
3/8"	M16x1.5	YM21-1016
3/8"	M22x1.5	YM21-1022
1/2"	M16x1.5	YM21-1216
1/2"	M22x1.5	YM21-1222



FIXED ADAPTOR METRIC FEMALE x BSP MALE		
METRIC	BSP	CODE
M10x1.5	1/8"	YM86-1003
M16x1.5	3/8"	YM86-1610
M18x1.5	3/8"	YM86-1810
M18x1.5	1/2"	YM86-1812
M20x1.5	3/8"	YM86-2010
M20x1.5	1/2"	YM86-2012

BRASS AIRLINE

MALE HOSETAIL	
SIZE (TAIL x MBSP)	CODE
3mm x 1/8"	FH3-0303
5mm x 1/8"	FH3-0503
5mm x 1/4"	FH3-0506
6mm x 1/8"	FH3-0603
6mm x 1/4"	FH3-0606
6mm x 3/8"	FH3-0610
6mm x 1/2"	FH3-0612
8mm x 1/8"	FH3-0803
8mm x 1/4"	FH3-0806
8mm x 3/8"	FH3-0810
8mm x 1/2"	FH3-0812
10mm x 1/8"	FH3-1003
10mm x 1/4"	FH3-1006
10mm x 3/8"	FH3-1010
10mm x 1/2"	FH3-1012
10mm x 3/4"	FH3-1020
12mm x 1/8"	FH3-1203
12mm x 1/4"	FH3-1206
12mm x 3/8"	FH3-1210
12mm x 1/2"	FH3-1212
12mm x 3/4"	FH3-1220
16mm x 1/4"	FH3-1606
16mm x 3/8"	FH3-1610
16mm x 1/2"	FH3-1612
16mm x 3/4"	FH3-1620
20mm x 1/4"	FH3-2006
20mm x 3/8"	FH3-2010
20mm x 1/2"	FH3-2012
20mm x 3/4"	FH3-2020
20mm x 1"	FH3-2025
25mm x 1/2"	FH3-2512
25mm x 3/4"	FH3-2520
25mm x 1"	FH3-2525



NUT & TAIL	
SIZE (TAIL x FBSP)	CODE
5mm x 1/8"	FH5-0503
5mm x 1/4"	FH5-0506
6mm x 1/4"	FH5-0606
6mm x 3/8"	FH5-0610
8mm x 1/4"	FH5-0806
8mm x 3/8"	FH5-0810
8mm x 1/2"	FH5-0812
10mm x 1/4"	FH5-1006
10mm x 3/8"	FH5-1010
10mm x 1/2"	FH5-1012
12mm x 3/8"	FH5-1210
12mm x 1/2"	FH5-1212
20mm x 3/4"	FH5-2020
25mm x 1"	FH5-2525



FEMALE HOSETAIL	
SIZE (TAIL x FBSP)	CODE
5mm x 1/8"	FH10-0503
5mm x 1/4"	FH10-0506
6mm x 1/8"	FH10-0603
6mm x 1/4"	FH10-0606
6mm x 3/8"	FH10-0610
6mm x 1/2"	FH10-0612
8mm x 1/8"	FH10-0803
8mm x 1/4"	FH10-0806
8mm x 3/8"	FH10-0810
8mm x 1/2"	FH10-0812
10mm x 1/8"	FH10-1003
10mm x 1/4"	FH10-1006
10mm x 3/8"	FH10-1010
10mm x 1/2"	FH10-1012
12mm x 1/4"	FH10-1206
12mm x 3/8"	FH10-1210
12mm x 1/2"	FH10-1212
16mm x 3/8"	FH10-1610
16mm x 1/2"	FH10-1612
20mm x 1/2"	FH10-2012
20mm x 3/4"	FH10-2020



SWIVEL HOSETAIL	
SIZE (TAIL x MBSP)	CODE
6mm x 1/4"	FH3S-006
10mm x 3/8"	FH3S-010
12mm x 1/2"	FH3S-012
20mm x 3/4"	FH3S-020
25mm x 1"	FH3S-025



MOST FITTINGS ALSO AVAILABLE IN NPT



90° MALE HOSETAIL	
SIZE (TAIL x MBSP)	CODE
5mm x 1/8"	FH6-0503
5mm x 1/4"	FH6-0506
6mm x 1/8"	FH6-0603
6mm x 1/4"	FH6-0606
6mm x 3/8"	FH6-0610
6mm x 1/2"	FH6-0612
8mm x 1/8"	FH6-0803
8mm x 1/4"	FH6-0806
8mm x 3/8"	FH6-0810
8mm x 1/2"	FH6-0812
10mm x 1/8"	FH6-1003
10mm x 1/4"	FH6-1006
10mm x 3/8"	FH6-1010
10mm x 1/2"	FH6-1012
10mm x 3/4"	FH6-1020
12mm x 1/4"	FH6-1206
12mm x 3/8"	FH6-1210
12mm x 1/2"	FH6-1212
12mm x 3/4"	FH6-1220
16mm x 1/4"	FH6-1606
16mm x 3/8"	FH6-1610
16mm x 1/2"	FH6-1612
16mm x 3/4"	FH6-1620
20mm x 3/8"	FH6-2010
20mm x 1/2"	FH6-2012
20mm x 3/4"	FH6-2020
25mm x 3/4"	FH6-2520
25mm x 1"	FH6-2525



MALE BRANCH TEE	
SIZE (TAIL x MBSP)	CODE
5mm x 1/8"	FH12-0503
5mm x 1/4"	FH12-0506
6mm x 1/4"	FH12-0606
6mm x 3/8"	FH12-0610
6mm x 1/2"	FH12-0612
8mm x 1/8"	FH12-0803
8mm x 1/4"	FH12-0806
8mm x 3/8"	FH12-0810
8mm x 1/2"	FH12-0812
10mm x 1/8"	FH12-1003
10mm x 1/4"	FH12-1006
10mm x 3/8"	FH12-1010
10mm x 1/2"	FH12-1012
12mm x 1/4"	FH12-1206
12mm x 3/8"	FH12-1210
12mm x 1/2"	FH12-1212
12mm x 3/4"	FH12-1220
16mm x 1/4"	FH12-1606
16mm x 3/8"	FH12-1610
16mm x 1/2"	FH12-1612
16mm x 3/4"	FH12-1620
20mm x 3/8"	FH12-2010
20mm x 1/2"	FH12-2012
20mm x 3/4"	FH12-2020



JOINER	
SIZE	CODE
5mm	FH7-005
6mm	FH7-006
8mm	FH7-008
10mm	FH7-010
12mm	FH7-012
16mm	FH7-016
20mm	FH7-020



ELBOW	
SIZE	CODE
5mm	FH11-005
6mm	FH11-006
8mm	FH11-008
10mm	FH11-010
12mm	FH11-012
16mm	FH11-016
20mm	FH11-020
25mm	FH11-025



TEE	
SIZE	CODE
5mm	FH14-005
6mm	FH14-006
8mm	FH14-008
10mm	FH14-010
12mm	FH14-012
16mm	FH14-016
20mm	FH14-020
25mm	FH14-025

MOST FITTINGS ALSO AVAILABLE IN NPT

COMPRESSION FITTINGS



MALE CONNECTOR		
SIZE (TUBE x MBSP)	BRASS	S/STEEL
1/8" x 1/8"	FC3-0303	-
3/16" x 1/8"	FC3-0503	-
3/16" x 1/4"	FC3-0506	-
1/4" x 1/8"	FC3-0603	FCSSM-0603
1/4" x 1/4"	FC3-0606	FCSSM-0606
1/4" x 3/8"	FC3-0610	FCSSM-0610
1/4" x 1/2"	FC3-0612	-
5/16" x 1/8"	FC3-0803	FCSSM-0803
5/16" x 1/4"	FC3-0806	FCSSM-0806
5/16" x 3/8"	FC3-0810	-
5/16" x 1/2"	FC3-0812	-
3/8" x 1/8"	FC3-1003	-
3/8" x 1/4"	FC3-1006	FCSSM-1006
3/8" x 3/8"	FC3-1010	FCSSM-1010
3/8" x 1/2"	FC3-1012	FCSSM-1012
1/2" x 1/4"	FC3-1206	FCSSM-1206
1/2" x 3/8"	FC3-1210	FCSSM-1210
1/2" x 1/2"	FC3-1212	FCSSM-1212
1/2" x 3/4"	FC3-1220	-
5/8" x 3/8"	FC3-1610	-
5/8" x 1/2"	FC3-1612	-
5/8" x 3/4"	FC3-1620	FCSSM-1620
3/4" x 1/2"	FC3-2012	FCSSM-2012
3/4" x 3/4"	FC3-2020	FCSSM-2020
1" x 3/4"	-	FCSSM-2520
1" x 1"	-	FCSSM-2525

90° MALE CONNECTOR		
SIZE (TUBE x MBSP)	BRASS	S/STEEL
1/8" x 1/8"	FC5-0303	-
3/16" x 1/8"	FC5-0503	-
3/16" x 1/4"	FC5-0506	-
1/4" x 1/8"	FC5-0603	FCSEM-0603
1/4" x 1/4"	FC5-0606	FCSEM-0606
1/4" x 3/8"	FC5-0610	FCSEM-0610
5/16" x 1/8"	FC5-0803	FCSEM-0803
5/16" x 1/4"	FC5-0806	FCSSM-0806
5/16" x 3/8"	FC5-0810	-
5/16" x 1/2"	FC5-0812	-
3/8" x 1/8"	FC5-1003	-
3/8" x 1/4"	FC5-1006	FCSEM-1006
3/8" x 3/8"	FC5-1010	FCSEM-1010
3/8" x 1/2"	FC5-1012	FCSEM-1012
1/2" x 1/4"	FC5-1206	FCSEM-1206
1/2" x 3/8"	FC5-1210	FCSEM-1210
1/2" x 1/2"	FC5-1212	FCSEM-1212
5/8" x 3/8"	FC5-1610	-
5/8" x 1/2"	FC5-1612	-
5/8" x 3/4"	-	FCSEM-1620
3/4" x 1/2"	FC5-2012	FCSEM-2012
3/4" x 3/4"	FC5-2020	FCSEM-2020
1" x 3/4"	-	FCSEM-2520
1" x 1"	-	FCSEM-2525

TUBE JOINER		
SIZE (TUBE)	BRASS	S/STEEL
1/8"	FC4-003	-
3/16"	FC4-005	-
1/4"	FC4-006	FCSJ-006
5/16"	FC4-008	FCSJ-008
3/8"	FC4-010	FCSJ-010
1/2"	FC4-012	FCSJ-012
5/8"	FC4-016	FCSJ-016
3/4"	FC4-020	FCSJ-020
1"	-	FCSJ-025



TUBE ELBOW		
SIZE (TUBE)	BRASS	S/STEEL
1/8"	FC11-003	-
3/16"	FC11-005	-
1/4"	FC11-006	FCSET-006
5/16"	FC11-008	FCSET-008
3/8"	FC11-010	FCSET-010
1/2"	FC11-012	FCSET-012
5/8"	FC11-016	FCSET-016
3/4"	FC11-020	FCSET-020
1"	-	FCSET-025





STEM ADAPTOR		
SIZE (TUBE x MBSP)	BRASS	S/STEEL
1/4" x 1/8"	-	FCSSA-0603
1/4" x 1/4"	-	FCSSA-0606
3/8" x 1/4"	-	FCSSA-1006
3/8" x 3/8"	-	FCSSA-1010
3/8" x 1/2"	-	FCSSA-1012
1/2" x 1/4"	-	FCSSA-1206
1/2" x 3/8"	-	FCSSA-1210
1/2" x 1/2"	-	FCSSA-1212
3/4" x 3/4"	-	FCSSA-2020
1" x 1"	-	FCSSA-2525



TUBE TEE		
SIZE (TUBE)	BRASS	S/STEEL
1/8"	FC14-003	-
3/16"	FC14-005	-
1/4"	FC14-006	FCSTT-006
5/16"	FC14-008	FCSTT-008
3/8"	FC14-010	FCSTT-010
1/2"	FC14-012	FCSTT-012
5/8"	FC14-016	FCSTT-016
3/4"	FC14-020	FCSTT-020
1"	-	FCSTT-025



MALE BRANCH TEE		
SIZE (TUBE x MBSP)	BRASS	S/STEEL
1/8" x 1/8"	FC12-0303	AVAILABLE ON REQUEST
3/16" x 1/8"	FC12-0503	
3/16" x 1/4"	FC12-0506	
1/4" x 1/8"	FC12-0603	
1/4" x 1/4"	FC12-0606	
5/16" x 1/8"	FC12-0803	
5/16" x 1/4"	FC12-0806	
5/16" x 3/8"	FC12-0810	
3/8" x 1/8"	FC12-1003	
3/8" x 1/4"	FC12-1006	
3/8" x 3/8"	FC12-1010	
1/2" x 1/4"	FC12-1206	
1/2" x 3/8"	FC12-1210	
1/2" x 1/2"	FC12-1212	
5/8" x 3/8"	FC12-1610	
5/8" x 1/2"	FC12-1612	
3/4" x 1/2"	FC12-2012	



MALE RUN TEE		
SIZE (TUBE x MBSP)	BRASS	S/STEEL
1/8" x 1/8"	FC13-0303	AVAILABLE ON REQUEST
3/16" x 1/8"	FC13-0503	
3/16" x 1/4"	FC13-0506	
1/4" x 1/8"	FC13-0603	
1/4" x 1/4"	FC13-0606	
5/16" x 1/8"	FC13-0803	
5/16" x 1/4"	FC13-0806	
3/8" x 1/4"	FC13-1006	
3/8" x 3/8"	FC13-1010	
1/2" x 1/4"	FC13-1206	
1/2" x 3/8"	FC13-1210	
1/2" x 1/2"	FC13-1212	
5/8" x 1/2"	FC13-1612	
3/4" x 1/2"	FC13-2012	



TUBE NUT		
SIZE (TUBE)	BRASS	S/STEEL
1/8"	FC2-003	-
3/16"	FC2-005	-
1/4"	FC2-006	FCSN-006
5/16"	FC2-008	FCSN-008
3/8"	FC2-010	FCSN-010
1/2"	FC2-012	FCSN-012
5/8"	FC2-016	FCSN-016
3/4"	FC2-020	FCSN-020
1"	-	FCSN-025



COPPER & BUNDY TUBE		
SIZE (TUBE)	COPPER	STEEL (BUNDY)
1/8"	CT-003	-
3/16"	CT-005	CTB-005
1/4"	CT-006	CTB-006
5/16"	CT-008	CTB-008
3/8"	CT-010	CTB-010
1/2"	CT-012	-



SPIGGOT		
SIZE (TUBE)	BRASS	S/STEEL
1/8"	FC99-003	-
3/16"	FC99-005	-
1/4"	FC99-006	-
5/16"	FC99-008	-
3/8"	FC99-010	-
1/2"	FC99-012	-
5/8"	FC99-016	-
3/4"	FC99-020	-



OLIVE & FERRULE SETS		
SIZE (TUBE)	BRASS	S/STEEL
1/8"	FC101-003	-
3/16"	FC101-005	-
1/4"	FC101-006	FCSF-006
5/16"	FC101-008	FCSF-008
3/8"	FC101-010	FCSF-010
1/2"	FC101-012	FCSF-012
5/8"	FC101-016	FCSF-016
3/4"	FC101-020	FCSF-020
1"	-	FCSF-025

STAINLESS STEEL 316 TUBE			
SIZE IMPERIAL	CODE	SIZE METRIC	CODE
1/4"	SSST-006	6mm	SSSTM-006
5/16"	SSST-008	8mm	SSSTM-008
3/8"	SSST-010	10mm	SSSTM-010
1/2"	SSST-012	12mm	SSSTM-012
5/8"	SSST-016	16mm	SSSTM-016
3/4"	SSST-020	20mm	SSSTM-020
1"	SSST-025	25mm	SSSTM-025

1.2mm WALL THICKNESS.

METRIC PUSHFIT



MALE STUD	
SIZE (TUBE x MBSP)	CODE
4mm x 1/8"	FLMSM-0403
4mm x 1/4"	FLMSM-0406
6mm x 1/8"	FLMSM-0603
6mm x 1/4"	FLMSM-0606
6mm x 3/8"	FLMSM-0610
8mm x 1/8"	FLMSM-0803
8mm x 1/4"	FLMSM-0806
8mm x 3/8"	FLMSM-0810
8mm x 1/2"	FLMSM-0812
10mm x 1/4"	FLMSM-1006
10mm x 3/8"	FLMSM-1010
10mm x 1/2"	FLMSM-1012
12mm x 1/4"	FLMSM-1206
12mm x 3/8"	FLMSM-1210
12mm x 1/2"	FLMSM-1212



90° MALE ELBOW	
SIZE (TUBE x MBSP)	CODE
4mm x 1/8"	FLMEM-0403
4mm x 1/4"	FLMEM-0406
6mm x 1/8"	FLMEM-0603
6mm x 1/4"	FLMEM-0606
6mm x 3/8"	FLMEM-0610
6mm x 1/2"	FLMEM-0612
8mm x 1/8"	FLMEM-0803
8mm x 1/4"	FLMEM-0806
8mm x 3/8"	FLMEM-0810
8mm x 1/2"	FLMEM-0812
10mm x 1/4"	FLMEM-1006
10mm x 3/8"	FLMEM-1010
10mm x 1/2"	FLMEM-1012
12mm x 1/4"	FLMEM-1206
12mm x 3/8"	FLMEM-1210
12mm x 1/2"	FLMEM-1212



FEMALE STUD	
SIZE (TUBE x FBSP)	CODE
4mm x 1/8"	FLMSF-0403
4mm x 1/4"	FLMSF-0406
6mm x 1/8"	FLMSF-0603
6mm x 1/4"	FLMSF-0606
8mm x 1/8"	FLMSF-0803
8mm x 1/4"	FLMSF-0806
8mm x 3/8"	FLMSF-0810
10mm x 1/4"	FLMSF-1006
10mm x 3/8"	FLMSF-1010
10mm x 1/2"	FLMSF-1012
12mm x 3/8"	FLMSF-1210
12mm x 1/2"	FLMSF-1212



90° FEMALE ELBOW	
SIZE (TUBE x FBSP)	CODE
4mm x 1/8"	FLMEF-0403
4mm x 1/4"	FLMEF-0406
6mm x 1/8"	FLMEF-0603
6mm x 1/4"	FLMEF-0606
8mm x 1/8"	FLMEF-0803
8mm x 1/4"	FLMEF-0806
8mm x 3/8"	FLMEF-0810
10mm x 1/4"	FLMEF-1006
10mm x 3/8"	FLMEF-1010
12mm x 1/2"	FLMEF-1212

MOST FITTINGS ALSO AVAILABLE IN FULL METALLIC

MALE BRANCH TEE	
SIZE (TUBE x MBSP)	CODE
4mm x 1/8"	FLMTB-0403
4mm x 1/4"	FLMTB-0406
6mm x 1/8"	FLMTB-0603
6mm x 1/4"	FLMTB-0606
8mm x 1/8"	FLMTB-0803
8mm x 1/4"	FLMTB-0806
8mm x 3/8"	FLMTB-0810
10mm x 1/4"	FLMTB-1006
10mm x 3/8"	FLMTB-1010
10mm x 1/2"	FLMTB-1012
12mm x 1/4"	FLMTB-1206
12mm x 3/8"	FLMTB-1210
12mm x 1/2"	FLMTB-1212



MALE RUN TEE	
SIZE (TUBE x MBSP)	CODE
4mm x 1/8"	FLMTR-0403
4mm x 1/4"	FLMTR-0406
6mm x 1/8"	FLMTR-0603
6mm x 1/4"	FLMTR-0606
8mm x 1/8"	FLMTR-0803
8mm x 1/4"	FLMTR-0806
8mm x 3/8"	FLMTR-0810
10mm x 1/4"	FLMTR-1006
10mm x 3/8"	FLMTR-1010
10mm x 1/2"	FLMTR-1012
12mm x 1/4"	FLMTR-1206
12mm x 3/8"	FLMTR-1210
12mm x 1/2"	FLMTR-1212



TUBE JOINER	
SIZE (TUBE x TUBE)	CODE
4mm x 4mm	FLMJ-004
6mm x 4mm	FLMJ-0604
8mm x 4mm	FLMJ-0804
6mm x 6mm	FLMJ-006
8mm x 6mm	FLMJ-0806
10mm x 6mm	FLMJ-1006
8mm x 8mm	FLMJ-008
10mm x 8mm	FLMJ-1008
10mm x 10mm	FLMJ-010
12mm x 12mm	FLMJ-012



Y-PIECE	
SIZE (TUBE x TUBE)	CODE
4mm x 4mm	FLMY-004
6mm x 4mm	FLMY-0604
6mm x 6mm	FLMY-006
8mm x 6mm	FLMY-0806
8mm x 8mm	FLMY-008
10mm x 8mm	FLMY-1008
10mm x 10mm	FLMY-010
12mm x 10mm	FLMY-1210
12mm x 12mm	FLMY-012



TUBE ELBOW	
SIZE (TUBE)	CODE
4mm	FLMET-004
6mm	FLMET-006
8mm	FLMET-008
10mm	FLMET-010
12mm	FLMET-012



TUBE TEE	
SIZE (TUBE)	CODE
4mm	FLMTT-004
6mm	FLMTT-006
8mm	FLMTT-008
10mm	FLMTT-010
12mm	FLMTT-012



BULKHEAD	
SIZE (TUBE)	CODE
4mm	FLMBC-004
6mm	FLMBC-006
8mm	FLMBC-008
10mm	FLMBC-010
12mm	FLMBC-012

MOST FITTINGS ALSO AVAILABLE IN FULL METALLIC

IMPERIAL PUSHFIT



MALE STUD	
SIZE (TUBE x MBSP)	CODE
1/8" x 1/8"	FISM-0303
3/16" x 1/8"	FISM-0503
3/16" x 1/4"	FISM-0506
1/4" x 1/8"	FISM-0603
1/4" x 1/4"	FISM-0606
1/4" x 3/8"	FISM-0610
3/8" x 1/4"	FISM-1006
3/8" x 3/8"	FISM-1010
3/8" x 1/2"	FISM-1012
1/2" x 1/4"	FISM-1206
1/2" x 3/8"	FISM-1210
1/2" x 1/2"	FISM-1212



90° MALE ELBOW	
SIZE (TUBE x MBSP)	CODE
1/8" x 1/8"	FIEM-0303
3/16" x 1/8"	FIEM-0503
3/16" x 1/4"	FIEM-0506
1/4" x 1/8"	FIEM-0603
1/4" x 1/4"	FIEM-0606
1/4" x 3/8"	FIEM-0610
1/4" x 1/2"	FIEM-0612
3/8" x 1/4"	FIEM-1006
3/8" x 3/8"	FIEM-1010
3/8" x 1/2"	FIEM-1012
1/2" x 1/4"	FIEM-1206
1/2" x 3/8"	FIEM-1210
1/2" x 1/2"	FIEM-1212



MALE RUN TEE	
SIZE (TUBE x MBSP)	CODE
1/8" x 1/8"	FITR-0303
3/16" x 1/8"	FITR-0503
1/4" x 1/8"	FITR-0603
1/4" x 1/4"	FITR-0606
1/4" x 3/8"	FITR-0610
3/8" x 1/4"	FITR-1006
3/8" x 3/8"	FITR-1010
3/8" x 1/2"	FITR-1012
1/2" x 1/4"	FITR-1206
1/2" x 3/8"	FITR-1210
1/2" x 1/2"	FITR-1212



MALE BRANCH TEE	
SIZE (TUBE x MBSP)	CODE
1/8" x 1/8"	FITB-0303
3/16" x 1/8"	FITB-0503
1/4" x 1/8"	FITB-0603
1/4" x 1/4"	FITB-0606
1/4" x 3/8"	FITB-0610
3/8" x 1/4"	FITB-1006
3/8" x 3/8"	FITB-1010
3/8" x 1/2"	FITB-1012
1/2" x 1/4"	FITB-1206
1/2" x 3/8"	FITB-1210
1/2" x 1/2"	FITB-1212



TUBE JOINER	
SIZE (TUBE)	CODE
1/8"	FIJ-003
3/16"	FIJ-005
1/4"	FIJ-006
3/8"	FIJ-010
1/2"	FIJ-012



TUBE ELBOW	
SIZE (TUBE)	CODE
1/8"	FIET-003
3/16"	FIET-005
1/4"	FIET-006
3/8"	FIET-010
1/2"	FIET-012



TUBE TEE	
SIZE (TUBE)	CODE
1/8"	FITT-003
3/16"	FITT-005
1/4"	FITT-006
3/8"	FITT-010
1/2"	FITT-012

MOST FITTINGS ALSO AVAILABLE IN FULL METALLIC

TUBE



**STANDARD TUBE
COLOUR BLACK.
OTHER COLOURS
AVAILABLE ON
REQUEST.**

METRIC TUBING					
O.D. W.P.	NYLON 12 250 psi	LDPE 120 psi	SEMI RIGID 625 psi	AIRBRAKE 250 psi	PU 115 psi
4mm	DMN-04	DML-04	DMS-04	DMA-04	DMPU-04
6mm	DMN-06	DML-06	DMS-06	DMA-06	DMPU-06
8mm	DMN-08	DML-08	DMS-08	DMA-08	DMPU-08
10mm	DMN-10	DML-10	DMS-10	DMA-10	DMPU-10
12mm	DMN-12	DML-12	DMS-12	DMA-12	DMPU-12
16mm	DMN-16	DML-16	DMS-16	DMA-16	-

IMPERIAL TUBING					
O.D. W.P.	NYLON 12 250 psi	LDPE 120 psi	SEMI RIGID 625 psi	AIRBRAKE 250 psi	PU 115 psi
1/8"	DIN-03	DIL-03	DIS-03	DIA-03	-
3/16"	DIN-05	DIL-05	DIS-05	DIA-05	DIPU-05
1/4"	DIN-06	DIL-06	DIS-06	DIA-06	DIPU-06
5/16"	SEE 8mm METRIC				
3/8"	DIN-10	DIL-10	DIS-10	DIA-10	DIPU-10
1/2"	DIN-12	DIL-12	DIS-12	DIA-12	DIPU-12
5/8"	DIN-16	DIL-16	DIS-16	DIA-16	-



NITTO POLYURETHANE					
SIZE	ADAPTOR		COUPLING		MBSP
	PLASTIC	STEEL	PLASTIC	STEEL	BRASS
8mm	FNAPUP-08	FNAPU-08	FNCPU-08	FNCPU-08	FNPU-08
10mm	FNAPUP-10	FNAPU-10	FNCPU-10	FNCPU-10	FNPU-10
12mm	FNAPUP-12	FNAPU-12	FNCPU-12	FNCPU-12	FNPU-12



NITTO PU RECOIL					
SIZE (OD)	WORKING LENGTH	CODE	SIZE (OD)	WORKING LENGTH	CODE
8mm	2MT	DMPU-0802	12mm	2MT	DMPU-1202
	4MT	DMPU-0804		4MT	DMPU-1204
	6MT	DMPU-0806		6MT	DMPU-1206
	8MT	DMPU-0808		8MT	DMPU-1208
10mm	2MT	DMPU-1002			
	4MT	DMPU-1004			
	6MT	DMPU-1006			
	8MT	DMPU-1008			

QUICK RELEASE



NITTO COUPLING x MBSP		
SIZE	100 SERIES	200 SERIES
1/4"	FNC-M06	FNC2-M06
3/8"	FNC-M10	FNC2-M10
1/2"	FNC-M12	FNC2-M12



NITTO COUPLING x FBSP		
SIZE	100 SERIES	200 SERIES
1/4"	FNC-F06	FNC2-F06
3/8"	FNC-F10	FNC2-F10
1/2"	FNC-F12	FNC2-F12



NITTO COUPLING x TAIL		
SIZE	100 SERIES	200 SERIES
1/4"	FNC-T06	FNC2-T06
3/8"	FNC-T10	FNC2-T10
1/2"	FNC-T12	FNC2-T12



NITTO ADAPTOR x MBSP	
SIZE	SUIT 100 & 200 SERIES
1/4"	FNA-M06
3/8"	FNA-M10
1/2"	FNA-M12



NITTO ADAPTOR x FBSP	
SIZE	SUIT 100 & 200 SERIES
1/4"	FNA-F06
3/8"	FNA-F10
1/2"	FNA-F12



NITTO ADAPTOR x TAIL	
SIZE	SUIT 100 & 200 SERIES
1/4"	FNA-T06
3/8"	FNA-T10
1/2"	FNA-T12



JAMEC COUPLING x MBSP		
SIZE	310 SERIES	320 SERIES
1/8"	FJC-M03	-
1/4"	FJC-M06	FJC2-M06
3/8"	FJC-M10	FJC2-M10
1/2"	FJC-M12	FJC2-M12



JAMEC COUPLING x FBSP		
SIZE	310 SERIES	320 SERIES
1/8"	-	-
1/4"	FJC-F06	FJC2-F06
3/8"	FJC-F10	FJC2-F10
1/2"	FJC-F12	FJC2-F12



JAMEC COUPLING x TAIL		
SIZE	310 SERIES	320 SERIES
3/16"	FJC-T05	-
1/4"	FJC-T06	-
5/16"	FJC-T08	-
3/8"	FJC-T10	FJC2-T10
1/2"	FJC-T12	-



JAMEC ADAPTOR x MBSP	
SIZE	SUIT 310 & 320 SERIES
1/8"	FJA-M03
1/4"	FJA-M06
3/8"	FJA-M10
1/2"	FJA-M12



JAMEC ADAPTOR x FBSP	
SIZE	SUIT 310 & 320 SERIES
1/8"	FJA-F03
1/4"	FJA-F06
3/8"	FJA-F10
1/2"	FJA-F12



JAMEC ADAPTOR x TAIL	
SIZE	SUIT 310 & 320 SERIES
3/16"	FJA-T05
1/4"	FJA-T06
5/16"	FJA-T08
3/8"	FJA-T10
1/2"	FJA-T12

OTHER COUPLINGS & ADAPTORS AVAILABLE ON REQUEST



AIRBRAKE COUPLING x MNPT		
SIZE	SEALING	NON SEALING
1/4"	FABC-M06	FABCN-M06
3/8"	FABC-M10	FABCN-M10
1/2"	FABC-M12	FABCN-M12



AIRBRAKE COUPLING x FNPT		
SIZE	SEALING	NON SEALING
1/4"	FABC-F06	FABCN-F06
3/8"	FABC-F10	FABCN-F10
1/2"	FABC-F12	FABCN-F12



AIRBRAKE ADAPTOR x MNPT		
SIZE	SEALING	NON SEALING
1/4"	FABAS-M06	FABA-M06
3/8"	FABAS-M10	FABA-M10
1/2"	FABAS-M12	FABA-M12



AIRBRAKE ADAPTOR x FNPT		
SIZE	SEALING	NON SEALING
1/4"	FABAS-F06	FABA-F06
3/8"	FABAS-F10	FABA-F10
1/2"	FABAS-F12	FABA-F12



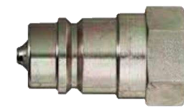
PARKER 20 SERIES (ARB)	
SIZE (NPT)	COUPLING
1/4"	FQRAC-006



PARKER 20 SERIES (ARB)	
SIZE (NPT)	ADAPTOR
1/4"	FQRAA-006



STUCCHI BIR	
SIZE	NON SEALING COUPLING
1/4"	HQRC-006
3/8"	HQRC-010
1/2"	HQRC-012
3/4"	HQRC-020
1"	HQRC-025



STUCCHI BIR	
SIZE	NON SEALING ADAPTOR
1/4"	HQRA-006
3/8"	HQRA-010
1/2"	HQRA-012
3/4"	HQRA-020
1"	HQRA-025

OTHER COUPLINGS & ADAPTORS AVAILABLE ON REQUEST

BLOW GUNS & FILTER REGULATORS



BLACK SQUEEZE GRIP BLOW GUN	
LENGTH	PART #
100mm LONG	FBG-STD
250mm LONG	FBG-250
500mm LONG	FBG-500

BLUE PREMIUM BLOW GUN	
CODE	FBG-BLUE



BLACK METALLIC BLOW GUN	
CODE	FBG-METAL



FILTER REGULATORS 145psi, -10°C TO 60°C				
SIZE	FILTER REGULATOR	REGULATOR	FILTER (no gauge)	MAXIMUM (l/min)
1/4"	FREG-005 *	FRE-005 *	-	3000
	FREG-006	FRE-006	FIL-006	4000
3/8"	FREG-010	FRE-010	FIL-010	4000
1/2"	FREG-012	FRE-012	FIL-012	6000
3/4"	FREG-020	FRE-020	FLI-020	1200
1"	FREG-025	FRE-025	FIL-025	

ALL FILTER REGULATORS COME WITH MOUNTING BRACKETS

ALL REGULATORS INCLUDE GAUGE

*INDICATES MINI SERIES



LUBRICATORS & OTHER ACCESSORIES AVAILABLE ON REQUEST

PRESSURE WASHER & RECTUS COUPLINGS



PRESSURE WASHER PARKER ST SERIES				
ADAPTOR (MALE)		SIZE	COUPLING (FEMALE)	
FEM NPT	MALE NPT		FEM NPT	MALE NPT
FPWA-F06	FPWA-M06	1/4" NPT	FPWC-F06	FPWC-M06
FPWA-F10	FPWA-M10	3/8" NPT	FPWC-F10	FPWC-M10
FPWA-F12	FPWA-M12	1/2" NPT	FPWC-F12	FPWC-M12



PRESSURE WASHER M22 COUPLINGS (KARCHER)				
ADAPTOR (MALE)		SIZE	COUPLING (FEMALE)	
FEM NPT	MALE NPT		FEM NPT	MALE NPT
FPWM-F06	FPWM-M06	1/4" NPT	FPWF-F06	FPWF-M06
FPWM-F10	FPWM-M10	3/8" NPT	FPWF-F10	FPWF-M10
FPWM-F12	FPWM-M12	1/2" NPT	FPWF-F12	FPWF-M12



PARKER RECTUS P21 COUPLINGS (BRASS)				
ADAPTOR (MALE)		SIZE	COUPLING (FEMALE)	
FEM BSP	MALE BSP		FEM BSP	MALE BSP
FQRMA-F03	FQRMA-M03	1/8" BSP	FQRMC-F03	FQRMC-M03
FQRMA-F06	FQRMA-M06	1/4" BSP	FQRMC-F06	FQRMC-M06

OTHER PRESSURE WASHER HOSE, FITTINGS, COUPLINGS & WANDS AVAILABLE ON REQUEST

AIRLINE ACCESSORIES



BRASS NEEDLE VALVE BSP			
SIZE	FEMALE	M/F	MALE
1/8"	FNV-003	FNVMF-003	FNVMM-003
1/4"	FNV-006	FNVMF-006	FNVMM-006



PRESSURE RELIEF VALVE (11 BAR)	
SIZE	CODE
1/4"	FPRV-006
3/8"	FPRV-010
1/2"	FPRV-012



ROUND MANIFOLD	
1/2" INLET x 1/4" BSP OUTLETS	
FAM-R2	2 x 1/4" PORT OUTLET
FAM-R3	3 x 1/4" PORT OUTLET



STRAIGHT MANIFOLD	
1/4" INLET x 1/4" BSP OUTLETS	
FAM-S3	3 x 1/4" PORT OUTLET
FAM-S4	4 x 1/4" PORT OUTLET
FAM-S5	5 x 1/4" PORT OUTLET



SILENCER			
SIZE	BUTTON	CONE	PLASTIC
1/8"	FSLI-003	FSLI-C03	FSLI-P03
1/4"	FSLI-006	FSLI-C06	FSLI-P06
3/8"	FSLI-010	FSLI-C10	FSLI-P10
1/2"	FSLI-012	FSLI-C12	FSLI-P12

TYRE ACCESSORIES



TYRE INFLATOR	
DESCRIPTION	CODE
TYRE INFLATOR & GAUGE, 3 FUNC	FAG-THB



TYRE INFLATOR	
DESCRIPTION	CODE
2000 TDR TYRE INFLATOR	FAG-TDR



TYRE GAUGE	
DESCRIPTION	CODE
STRAIGHT TYRE GAUGE	FAG-STRAIGHT



TYRE GAUGE	
DESCRIPTION	CODE
TYRE GAUGE ANGLED CHUCK	FAG-ANGLE



TYRE INFLATOR	
DESCRIPTION	CODE
CLIP ON 1/4" TAIL TYRE INFLATOR	FAC-T06



TYRE INFLATOR	
DESCRIPTION	CODE
CLIP ON 1/4" BSP TYRE CHUCK	FAC-F06



SEALING CHUCK	
DESCRIPTION	CODE
DUAL CHUCK SEALING	FAC-DUAL



SCHRADER VALVE	
DESCRIPTION	CODE
1/8" SCHRADER VALVE	FAC-SV

SEALANTS



LOCTITE 567 SEALANT		
CODE	TUBE SIZE	DESCRIPTION
LOC-567-050	50mL	Excellent for high pressure applications to lock and seal tapered metal threads providing an instant seal. It allows back-off to align fittings and can withstand temperatures up to 204°C.
LOC-567-250	250mL	

LOCTITE 577 SEALANT (HARD SETTING)		
CODE	TUBE SIZE	DESCRIPTION
LOC-577-050	50mL	A medium strength, general purpose sealant particularly suitable for use on stainless steel, requiring low temperature and fast cure.
LOC-577-250	250mL	



RAPID FIX ADHESIVE		
CODE	TUBE SIZE	DESCRIPTION
RAPID FIX	2 X 10mm PACKS	RapidFix is a Dual Adhesive System with reinforcing and gap-filling capabilities, comprising an all-purpose formula that quickly and easily bonds metals, timber, ceramics, plastics, glass, rubber and much more.

TEFLON THREAD TAPE			
CODE	DIMENSIONS	TEMP (°C)	COLOUR
TTT	12mm x .075 x 10m	260	WHITE
TTT-W18	18mm x .075 x 10m	260	WHITE
TTT-PINK	13mm x .10 x 10m	260	PINK
TTT-YEL	12mm x .10 x 10m	310	YELLOW



GAUGES



DRY BOTTOM ENTRY				FACE SIZE (mm)	DRY REAR ENTRY			
SIZE	PRESSURE		CODE		SIZE	PRESSURE		CODE
	KPA	PSI				KPA	PSI	
1/8"	250	36	G40-250-03	40	1/8"	-100	-15	GV41-250-03
1/8"	400	60	G40-400-03		1/8"	250	36	G41-250-03
1/8"	1000	145	G40-1000-03		1/8"	400	60	G41-400-03
					1/8"	1000	145	G41-1000-03
					1/4"	1000	145	G41-1000
1/4"	-100	-15	GV50-100	50	1/8"	250	36	G51-250-03
1/4"	250	36	G50-250		1/4"	250	36	G51-250
1/4"	400	60	G50-400		1/8"	400	60	G51-400-03
1/4"	800	115	G50-800		1/4"	800	115	G51-800
1/4"	1000	145	G50-1000		1/8"	1000	145	G51-1000-03
1/4"	1600	230	G50-1600		1/4"	1000	145	G51-1000
1/4"	2500	360	G50-2500		1/8"	1600	230	G51-1600-03
					1/4"	1600	230	G51-1600
					1/8"	4000	580	G51-4000-03
1/4"	-100	-15	GV63-100	63	1/4"	250	36	G64-250
1/4"	100	15	G63-100		1/4"	1000	145	G64-1000
1/4"	250	36	G63-250		1/4"	1600	230	G64-1600
1/4"	400	60	G63-400		1/4"	4000	580	G64-4000
1/4"	600	85	G63-600		1/4"	6000	870	G64-6000
1/4"	800	115	G63-800					
1/4"	1000	145	G63-1000					
1/4"	1600	230	G63-1600					
1/4"	2500	360	G63-2500					
1/4"	4000	580	G63-4000					
1/4"	6000	870	G63-6000					
3/8"	-100	-15	GV100-100	100				
3/8"	100	15	G100-100					
3/8"	250	36	G100-250					
3/8"	400	60	G100-400					
3/8"	800	115	G100-800					
3/8"	1000	145	G100-1000					
3/8"	1600	230	G100-1600					
3/8"	2500	360	G100-2500					



LIQUID FILLED BOTTOM ENTRY				FACE SIZE (mm)	LIQUID FILLED REAR ENTRY				
SIZE	PRESSURE		CODE		SIZE	PRESSURE		CODE	
	KPA	PSI				KPA	PSI		
1/4"	-100	-15	GLV63-100	63	1/4"	-100	-15	GLV64-100	
1/4"	100	15	GL63-100		1/4"	100	15	GL64-100	
1/4"	250	36	GL63-250		1/4"	250	36	GL64-250	
1/4"	400	60	GL63-400		1/4"	400	60	GL64-400	
1/4"	600	85	GL63-600		1/4"	600	85	GL64-600	
1/4"	800	115	GL63-800		1/4"	800	115	GL64-800	
1/4"	1000	145	GL63-1000		1/4"	1000	145	GL64-1000	
1/4"	1600	230	GL63-1600		1/4"	1600	230	GL64-1600	
1/4"	2500	360	GL63-2500		1/4"	2500	360	GL64-2500	
1/4"	4000	580	GL63-4000		1/4"	4000	580	GL64-4000	
1/4"	6000	870	GL63-6000		1/4"	6000	870	GL64-6000	
1/4"	8000	1150	GL63-8000		1/4"	8000	1150	GL64-8000	
1/4"	10000	1500	GL63-10000		1/4"	10000	1500	GL64-10000	
1/4"	16000	2320	GL63-16000		1/4"	16000	2320	GL64-16000	
1/4"	25000	3500	GL63-25000		1/4"	25000	3500	GL64-25000	
1/4"	40000	5800	GL63-40000		1/4"	40000	5800	GL64-40000	
3/8"	250	36	GL100-250		100				
3/8"	400	60	GL100-400						
3/8"	800	115	GL100-800						
3/8"	1000	145	GL100-1000						
3/8"	1600	230	GL100-1600						
3/8"	2500	360	GL100-2500						
3/8"	4000	580	GL100-4000						
3/8"	6000	870	GL100-6000						
3/8"	8000	1150	GL100-8000						
3/8"	10000	1500	GL100-10000						
3/8"	16000	2320	GL100-16000						
3/8"	25000	3500	GL100-25000						
3/8"	40000	5800	GL100-40000						

BRASS VALVES



F/F STANDARD BALL VALVE		
SIZE	CODE	W.P. (PSI)
1/4"	211-006	800
3/8"	211-010	800
1/2"	211-012	700
3/4"	211-020	550
1"	211-025	550
1.1/4"	211-032	450
1.1/2"	211-040	350
2"	211-050	350
2.1/2"	211-065	250
3"	211-080	250
4"	211-100	250



F/F AGA BALL VALVE		
SIZE	CODE	W.P. (PSI)
1/4"	210-006	800
3/8"	210-010	800
1/2"	210-012	700
3/4"	210-020	550
1"	210-025	550
1.1/4"	210-032	450
1.1/2"	210-040	350
2"	210-050	350
2.1/2"	210-065	250
3"	210-080	250
4"	210-100	250

ALSO AVAILABLE IN M/F (CODE: 215)



F/F T-HANDLE BALL VALVE		
SIZE	CODE	W.P. (PSI)
1/4"	212-006	360
3/8"	212-010	360
1/2"	212-012	360
3/4"	212-020	360
1"	212-025	360



M/F T-HANDLE BALL VALVE		
SIZE	CODE	W.P. (PSI)
1/4"	213-006	360
3/8"	213-010	360
1/2"	213-012	360
3/4"	213-020	360
1"	213-025	360



F/F MINI BALL VALVE		
SIZE	CODE	W.P. (PSI)
1/4"	220-006	220
3/8"	220-010	220
1/2"	220-012	220
3/4"	220-020	220



M/F MINI BALL VALVE		
SIZE	CODE	W.P. (PSI)
1/4"	221-006	220
3/8"	221-010	220
1/2"	221-012	220
3/4"	221-020	220



3-WAY L-PORT BALL VALVE		
SIZE	CODE	W.P. (PSI)
1/4"	236-006	150
3/8"	236-010	150
1/2"	236-012	150
3/4"	236-020	150
1"	236-025	150
1.1/4"	236-032	150
1.1/2"	236-040	150
2"	236-050	150
3"	236-080	150

3-WAY T-PORT BALL VALVE		
SIZE	CODE	W.P. (PSI)
1/4"	234-006	150
3/8"	234-010	150
1/2"	234-012	150
3/4"	234-020	150
1"	234-025	150
1.1/4"	234-032	150
1.1/2"	234-040	150
2"	234-050	150



LOCKABLE BIBCOCK		
THREAD SIZE	TAIL SIZE	CODE
1/2"	20mm	327-015
3/4"	20mm	327-020

NON-LOCKABLE BIBCOCK		
THREAD SIZE	TAIL SIZE	CODE
1/2"	20mm	325-015
3/4"	25mm	325-020
1"	25mm	325-025

F/F GATE VALVE		
SIZE	CODE	W.P. (PSI)
3/8"	260-010	230
1/2"	260-012	230
3/4"	260-020	230
1"	260-025	230
1.1/4"	260-032	230
1.1/2"	260-040	230
2"	260-050	230
2.1/2"	260-065	230
3"	260-080	230
4"	260-100	230



S/S STRAINER NYLON BSP	
SIZE	CODE
3/8"	255-010
1/2"	255-012
3/4"	255-020
1"	255-025
1.1/4"	255-032
1.1/2"	255-040
2"	255-050
2.1/2"	255-065
3"	255-080
4"	255-100



ALSO AVAILABLE IN BRONZE



STD YORK SPRING CHECK		
SIZE	CODE	W.P. (PSI)
1/4"	253-006	230
3/8"	253-010	230
1/2"	253-012	230
3/4"	253-020	230
1"	253-025	230
1.1/4"	253-032	150
1.1/2"	253-040	150
2"	253-050	150
2.1/2"	253-065	115
3"	253-080	115
4"	253-100	115



H.D. EUROPA SPRING CHECK		
SIZE	CODE	W.P. (PSI)
3/8"	250-010	360
1/2"	250-012	360
3/4"	250-020	360
1"	250-025	360
1.1/4"	250-032	260
1.1/2"	250-040	260
2"	250-050	260
2.1/2"	250-065	170
3"	250-080	170
4"	250-100	170

NOT SUITABLE FOR AIR

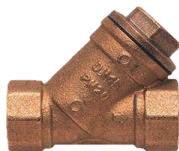


F/F SWING CHECK VALVE		
SIZE	CODE	W.P. (PSI)
1/2"	280-012	170
3/4"	280-020	170
1"	280-025	170
1.1/4"	280-032	140
1.1/2"	280-040	140
2"	280-050	140
2.1/2"	280-065	110
3"	280-080	110
4"	280-100	110

SUITABLE FOR FUELS



FOOT VALVE		
SIZE	CODE	W.P. (PSI)
1/2"	283-012	115
3/4"	283-020	115
1"	283-025	115
1.1/4"	283-032	115
1.1/2"	283-040	115
2"	283-050	115
2.1/2"	283-065	115
3"	283-080	115
4"	283-100	115



F/F Y-STRAINER		
SIZE	CODE	W.P. (PSI)
1/2"	261-012	260
3/4"	261-020	260
1"	261-025	260
1.1/4"	261-032	260
1.1/2"	261-040	260
2"	261-050	260
2.1/2"	261-065	260
3"	261-080	260
4"	261-100	260

PLASTIC & STEEL VALVES



WAFER BUTTERFLY VALVE NBR		
SIZE	CODE	W.P. (PSI)
2"	350-050	230
2.1/2"	350-065	230
3"	350-080	230
4"	350-100	230
5"	350-125	230
6"	350-150	230
8"	350-200	230
10"	350-250	230
12"	350-300	230

WAFER CHECK VALVE		
SIZE	CODE	W.P. (PSI)
2"	351-050	230
2.1/2"	351-065	230
3"	351-080	230
4"	351-100	230
5"	351-125	230
6"	351-150	230
8"	351-200	230
10"	351-250	230
12"	351-300	230

**EPDM & LUGGED PATTERNS ALSO
AVAILABLE ON REQUEST.
VALVES ACTUATED OR GEAR DRIVEN.**

SINGLE DISC FLAP ALSO AVAILABLE.

PLASTIC BALL VALVE				
SIZE	PVC (BUDGET)	W.P. (PSI)	NYLON HEAVY DUTY	W.P. (PSI)
1/2"	390-012	235	389-012	235
3/4"	390-020	235	389-020	235
1"	390-025	235	389-025	235
1.1/4"	390-032	235	389-032	235
1.1/2"	390-040	235	389-040	235
2"	390-050	235	389-050	235
2.1/2"	390-065	150	-	-
3"	390-080	150	-	-
4"	390-100	150	-	-



ADJUSTABLE PRESSURE RELIEF VALVE BRASS		
SIZE	2-10 BAR	11-20 BAR
1/2"	PRV-012	PRVX-012
3/4"	PRV-020	PRVX-020
1"	PRV-025	PRVX-025
1.1/4"	PRV-032	PRVX-032
1.1/2"	PRV-040	PRVX-040
2"	PRV-050	PRVX-050



STAINLESS STEEL VALVES



S/S BALL VALVE			
SIZE	2-PIECE	3-PIECE	1-PIECE
	1000 PSI		800 PSI
1/4"	293-006	290-006	291-006
3/8"	293-010	290-010	291-010
1/2"	293-012	290-012	291-012
3/4"	293-020	290-020	291-020
1"	293-025	290-025	291-025
1.1/4"	293-032	290-032	291-032
1.1/2"	293-040	290-040	291-040
2"	293-050	290-050	291-050
2.1/2"	293-065	290-065	-
3"	293-080	290-080	-
4"	293-100	290-100	-

S/S MINI BALL VALVE		
SIZE	F/F	M/F
	200 PSI	
1/4"	301-006	302-006
3/8"	301-010	302-010
1/2"	301-012	302-012
3/4"	301-020	302-020
1"	301-025	302-025



S/S 3-PORT VALVES			
SIZE	L PORT		T PORT
	SIDE ENTRY	BOTTOM ENTRY	
1/4"	296-006	296B-006	296T-006
3/8"	296-010	296B-010	296T-010
1/2"	296-012	296B-012	296T-012
3/4"	296-020	296B-020	296T-020
1"	296-025	296B-025	296T-025
1.1/4"	296-032	296B-032	296T-032
1.1/2"	296-040	296B-040	296T-040
2"	296-050	296B-050	296T-050
2.1/2"	296-065	296B-065	296T-065
3"	296-080	296B-080	296T-080

S/S Y-STRAINER	
SIZE	F/F 800 PSI
1/4"	W61-006
3/8"	W61-010
1/2"	W61-012
3/4"	W61-020
1"	W61-025
1.1/4"	W61-032
1.1/2"	W61-040
2"	W61-050
2.1/2"	W61-065
3"	W61-080
4"	W61-100



S/S CHECK VALVES			
CODE	SWING 200 PSI	4B SPRING 1000 PSI	STD SPRING 200 PSI
1/4"	-	-	300-006
3/8"	-	-	300-010
1/2"	292-012	294-012	300-012
3/4"	292-020	294-020	300-020
1"	292-025	294-025	300-025
1.1/4"	292-032	294-032	300-032
1.1/2"	292-040	294-040	300-040
2"	292-050	294-050	300-050
2.1/2"	292-065	294-065	300-065
3"	292-080	294-080	300-080
4"	-	-	300-100

S/S FLANGED BALL VALVE	
SIZE	ANSI 150 800 PSI
1/2"	290F-012
3/4"	290F-020
1"	290F-025
1.1/4"	290F-032
1.1/2"	290F-040
2"	290F-050
2.1/2"	290F-065
3"	290F-080
4"	290F-100



S/S NEEDLE	
SIZE	6000 PSI
1/4"	299-006
3/8"	299-010
1/2"	299-012
3/4"	299-020
1"	299-025



S/S GATE & GLOBE VALVES		
SIZE	GATE	GLOBE
	200 PSI	
1/2"	297-012	298-012
3/4"	297-020	298-020
1"	297-025	298-025
1 1/4"	297-032	298-032
1 1/2"	297-040	298-040
2"	297-050	298-050
2 1/2"	297-065	289-065
3"	297-080	298-080
4"	297-100	298-100

CAMLOCKS



TYPE 'A' MALE CAMLOCK x FBSP			
SIZE	STAINLESS STEEL	ALUM.	POLY
1/2"	653A-012	-	-
1/2" x 3/4"	653A-015	-	-
3/4"	653A-020	654A-020	649A-020
1"	653A-025	654A-025	649A-025
1.1/4"	653A-032	654A-032	649A-032
1.1/2"	653A-038	654A-038	649A-038
2"	653A-050	654A-050	649A-050
2.1/2"	653A-065	654A-065	649A-065
3"	653A-075	654A-075	649A-075
4"	653A-100	654A-100	649A-100
5"	653A-125	654A-125	-
6"	653A-150	654A-150	-
8"	-	654A-200	-

TYPE 'B' FEMALE CAMLOCK x MBSP			
SIZE	STAINLESS STEEL	ALUM.	POLY
1/2"	653B-012	-	-
1/2" x 3/4"	653B-015	-	-
3/4"	653B-020	654B-020	649B-020
1"	653B-025	654B-025	649B-025
1.1/4"	653B-032	654B-032	649B-032
1.1/2"	653B-038	654B-038	649B-038
2"	653B-050	654B-050	649B-050
2.1/2"	653B-065	654B-065	649B-065
3"	653B-075	654B-075	649B-075
4"	653B-100	654B-100	649B-100
5"	653B-125	654B-125	-
6"	653B-150	654B-150	-
8"	-	654B-200	-



TYPE 'C' FEMALE CAMLOCK x HOSETAIL			
SIZE	STAINLESS STEEL	ALUM.	POLY
1/2"	653C-012	-	-
1/2" x 3/4"	653C-015	-	-
3/4"	653C-020	654C-020	649C-020
1"	653C-025	654C-025	649C-025
1.1/4"	653C-032	654C-032	649C-032
1.1/2"	653C-038	654C-038	649C-038
2"	653C-050	654C-050	649C-050
2.1/2"	653C-065	654C-065	649C-065
3"	653C-075	654C-075	649C-075
4"	653C-100	654C-100	649C-100
5"	653C-125	654C-125	-
6"	653C-150	654C-150	-
8"	-	654C-200	-

TYPE 'D' FEMALE CAMLOCK x FBSP			
SIZE	STAINLESS STEEL	ALUM.	POLY
1/2"	653D-012	-	-
1/2" x 3/4"	653D-015	-	-
3/4"	653D-020	654D-020	649D-020
1"	653D-025	654D-025	649D-025
1.1/4"	653D-032	654D-032	649D-032
1.1/2"	653D-038	654D-038	649D-038
2"	653D-050	654D-050	649D-050
2.1/2"	653D-065	654D-065	649D-065
3"	653D-075	654D-075	649D-075
4"	653D-100	654D-100	649D-100
5"	653D-125	654D-125	-
6"	653D-150	654D-150	-
8"	-	654D-200	-



TYPE 'E' MALE CAMLOCK x HOSETAIL			
SIZE	STAINLESS STEEL	ALUM.	POLY
1/2"	653E-012	-	-
1/2" x 3/4"	653E-015	-	-
3/4"	653E-020	654E-020	649E-020
1"	653E-025	654E-025	649E-025
1.1/4"	653E-032	654E-032	649E-032
1.1/2"	653E-038	654E-038	649E-038
2"	653E-050	654E-050	649E-050
2.1/2"	653E-065	654E-065	649E-065
3"	653E-075	654E-075	649E-075
4"	653E-100	654E-100	649E-100
5"	653E-125	654E-125	-
6"	653E-150	654E-150	-
8"	-	654E-200	-

TYPE 'F' MALE CAMLOCK x MBSP			
SIZE	STAINLESS STEEL	ALUM.	POLY
1/2"	653F-012	-	-
1/2" x 3/4"	653F-015	-	-
3/4"	653F-020	654F-020	649F-020
1"	653F-025	654F-025	649F-025
1.1/4"	653F-032	654F-032	649F-032
1.1/2"	653F-038	654F-038	649F-038
2"	653F-050	654F-050	649F-050
2.1/2"	653F-065	654F-065	649F-065
3"	653F-075	654F-075	649F-075
4"	653F-100	654F-100	649F-100
5"	653F-125	654F-125	-
6"	653F-150	654F-150	-
8"	-	654F-200	-



TYPE 'DC' DUST CAP			
SIZE	STAINLESS STEEL	ALUM.	POLY
1/2"	653DC-012	-	-
3/4"	653DC-020	654DC-020	649DC-020
1"	653DC-025	654DC-025	649DC-025
1.1/4"	653DC-032	654DC-032	649DC-032
1.1/2"	653DC-038	654DC-038	649DC-038
2"	653DC-050	654DC-050	649DC-050
2.1/2"	653DC-065	654DC-065	649DC-065
3"	653DC-075	654DC-075	649DC-075
4"	653DC-100	654DC-100	649DC-100
5"	653DC-125	654DC-125	-
6"	653DC-150	654DC-150	-
8"	-	654DC-200	-

TYPE 'DP' DUST PLUG			
SIZE	STAINLESS STEEL	ALUM.	POLY
1/2"	653DP-012	-	-
3/4"	653DP-020	654DP-020	649DP-020
1"	653DP-025	654DP-025	649DP-025
1.1/4"	653DP-032	654DP-032	649DP-032
1.1/2"	653DP-038	654DP-038	649DP-038
2"	653DP-050	654DP-050	649DP-050
2.1/2"	653DP-065	654DP-065	649DP-065
3"	653DP-075	654DP-075	649DP-075
4"	653DP-100	654DP-100	649DP-100
5"	653DP-125	654DP-125	-
6"	653DP-150	654DP-150	-
8"	-	654DP-200	-



TYPE 'AA' MALE ADAPTOR		
SIZE	STAINLESS STEEL	ALUM.
1"	653AA-025	654AA-025
1.1/4"	653AA-032	654AA-032
1.1/2"	653AA-038	654AA-038
2"	653AA-050	654AA-050
2.1/2"	653AA-065	654AA-065
3"	653AA-075	654AA-075
4"	653AA-100	654AA-100
6"	653AA-150	654AA-150

TYPE 'FA' FLANGED ADAPTOR		
SIZE	STAINLESS STEEL	ALUM.
1"	653FA-025	654FA-025
1.1/4"	653FA-032	654FA-032
1.1/2"	653FA-038	654FA-038
2"	653FA-050	654FA-050
2.1/2"	653FA-065	654FA-065
3"	653FA-075	654FA-075
4"	653FA-100	654FA-100
6"	653FA-150	654FA-150



68° FEMALE x TAIL	
SIZE	ALUM.
2"	654BC-050
2.1/2"	654BC-065
3"	654BC-075
4"	654BC-100



90° FEMALE x TAIL	
SIZE	ALUM.
2"	654EC-050
2.1/2"	654EC-065
3"	654EC-075
4"	654EC-100



CAMLOCK WASHERS				
SIZE	BUNA	VITON	SILICON	TEFLON
1/2"	-	644WV-012	644WS-012	644WT-012
3/4"	644WB-020	644WV-020	644WS-020	644WT-020
1"	644WB-025	644WV-025	644WS-025	644WT-025
1 1/4"	644WB-032	644WV-032	644WS-032	644WT-032
1 1/2"	644WB-038	644WV-038	644WS-038	644WT-038
2"	644WB-050	644WV-050	644WS-050	644WT-050
2 1/2"	644WB-065	644WV-065	644WS-065	644WT-065
3"	644WB-075	644WV-075	644WS-075	644WT-075
4"	644WB-100	644WV-100	644WS-100	644WT-100
5"	644WB-125	644WV-125	644WS-125	644WT-125
6"	644WB-150	644WV-150	644WS-150	644WT-150
8"	644WB-200	-	-	-

OTHER CAMLOCK ACCESSORIES ALSO AVAILABLE.



'FM' REDUCER		
FEMALE	MALE	ALUMINIUM
2"	3"	654FM-5075
2"	4"	654FM-5094
3"	2"	654FM-7550
3"	2.1/2"	654FM-7565
3"	4"	654FM-7594
4"	2"	654FM-9450
4"	2.1/2"	654FM-9465
4"	3"	654FM-9475
6"	4"	654FM-9694



TYPE 'A' REDUCER		
CAMLOCK	FBSP	ALUMINIUM
2"	1.1/2"	654RA-5038
2.1/2"	1.1/2"	654RA-6538
2.1/2"	2"	654RA-6550
3"	2"	654RA-7550
4"	3"	654RA-9475



TYPE 'C' REDUCER		
CAMLOCK	TAIL	ALUMINIUM
2"	1.1/2"	654RC-5038
2.1/2"	2"	654RC-6550
3"	2"	654RC-7550
3"	2.1/2"	654RC-7565
4"	2"	654RC-9450
4"	2.1/2"	654RC-9465
4"	3"	654RC-9475



TYPE 'E' REDUCER		
CAMLOCK	TAIL	ALUMINIUM
2"	1.1/2"	654RE-5038
2.1/2"	2"	654RE-6550
3"	2"	654RE-7550
3"	2.1/2"	654RE-7565
4"	3"	654RE-9475

OTHER CAMLOCK ACCESSORIES ALSO AVAILABLE.

CLAMPS

T-BOLT CLAMPS		
SIZE (mm)	STAINLESS STEEL (304)	ZINC PLATED
17-19	701-019	700-019
19-21	701-021	700-021
21-23	701-023	700-023
23-25	701-025	700-025
26-28	701-028	700-028
29-31	701-031	700-031
32-35	701-035	700-035
34-37	701-037	700-037
36-39	701-039	700-039
40-43	701-043	700-043
44-47	701-047	700-047
48-51	701-051	700-051
52-55	701-055	700-055
56-59	701-059	700-059
60-63	701-063	700-063
64-67	701-067	700-067
68-73	701-073	700-073
74-79	701-079	700-079
80-85	701-085	700-085
86-91	701-091	700-091
92-97	701-097	700-097
98-103	701-103	700-103
104-112	701-112	700-112
113-121	701-121	700-121
122-130	701-130	700-130
131-139	701-139	700-139
140-148	701-148	700-148
149-162	701-162	700-162
162-174	701-174	700-174
175-187	701-187	700-187
188-200	701-200	700-200
201-213	701-213	700-213
214-226	701-226	700-226
227-239	701-239	700-239
240-252	701-252	700-252
253-265	701-265	700-265
266-278	701-278	700-278
279-291	701-291	700-291
292-304	701-304	700-304



T-BOLT CLAMPS (ADDITIONAL SIZES)	
SIZE (mm)	STAINLESS STEEL (304)
18-20	701-1820
21-23	701-2123
23-25	701-2325
24-26	701-2426
27-29	701-2729
30-33	701-3033
38-41	701-3841
42-45	701-4245
44-47	701-4447
46-49	701-4649
50-53	701-5053
54-57	701-5457
58-61	701-5861
62-65	701-6265
66-70	701-6670
71-76	701-7176
77-82	701-7782
83-88	701-8388
89-94	701-8994
95-100	701-9100
98-103	701-9103
101-107	701-9107
108-116	701-9116
117-125	701-9125



NORMA WORM DRIVE CLAMPS				
SIZE	STAINLESS	WIDTH	ZINC PLATED	WIDTH
(mm)	STEEL (304)	(mm)		(mm)
8-12	722-0812	7.5	720-0812	9
8-16	722-0816	9	-	-
10-16	722-1016	7.5	720-1016	9
12-20	722-1220	9	-	-
12-22	-	-	720-1222	9
16-27	722-1627	12	720-1627	12
20-32	722-2032	12	720-2032	12
25-40	722-2540	12	720-2540	12
30-45	722-3045	12	720-3045	12
35-50	722-3550	12	720-3550	12
40-60	722-4060	12	720-4060	12
50-70	722-5070	12	720-5070	12
60-80	722-6080	12	720-6080	12
70-90	722-7090	12	720-7090	12
80-100	722-8010	12	720-8010	12
90-110	722-9110	12	720-9110	12
100-120	722-9120	12	720-9120	12
110-130	722-9130	12	720-9130	12
120-140	722-9140	12	720-9140	12
130-150	722-9150	12	720-9150	12
140-160	722-9160	12	720-9160	12
150-170	722-9170	12	720-9170	12
160-180	722-9180	12	720-9180	12
180-200	722-9200	12	720-9200	12
200-220	722-9220	12	720-9220	12
210-230	722-9230	12	720-9230	12
230-250	722-9250	12	720-9250	12
240-260	722-9260	12	720-9260	12
260-280	722-9280	12	720-9280	12
280-300	722-9300	12	720-9300	12

NORMA HIGH TORQUE	
SIZE (mm)	STAINLESS STEEL (304)
25-45	723-045
32-54	723-054
45-67	723-067
57-79	723-079
70-92	723-092
83-105	723-105
95-118	723-118
108-130	723-130
121-143	723-143
133-156	723-156
146-168	723-168
159-181	723-181
172-194	723-194
184-206	723-206
197-219	723-219
210-232	723-232



WORMDRIVE FLEXIDRIVER
CODE: 722-TOOL

WORMDRIVE BAND & BUCKLES		
PART	STAINLESS STEEL (430)	ZINC PLATED
PER METRE	722-SM12	721-SM12
30m ROLL	722-S12	721-S12
BUCKLES	722-B12	721-B12



STRAPBINDER & BUCKLES				
SIZE (mm)	STAINLESS STEEL 201		STAINLESS STEEL 316	
	BAND	BUCKLES	BAND	BUCKLES
6.4	724-S06	724-B06	724S-S06	724-BS06
9.5	724-S10	724-B10	724S-S10	724-BS10
12.7	724-S12	724-B12	724S-S12	724-BS12
16.0	724-S16	724-B16	724S-S16	724-BS16
19.0	724-S20	724-B20	724S-S20	724-BS20



STRAPBINDER TOOL
CODE: 724-TOOL



CENTRE PUNCH TOOL
CODE: 750-TOOL

HEAVY DUTY DOUBLE BOLT		
SIZE (mm)	STEEL	REFERENCE NUMBER
16-22	608-0022	SL22
22-29	608-0029	SL29
29-34	608-0034	SL34
33-40	608-0040	SL40
40-49	608-0049	SL49
49-60	608-0060	SL60
60-76	608-0076	SL76
76-94	608-0094	SL94
89-97	608-0097	DBC400
94-115	608-0115	SL115
103-109	608-0109	DBC463
108-125	608-0125	DBC525
115-133	608-0133	DBC550
130-144	608-0144	DBC600
145-151	608-0151	DBC639
151-165	608-0165	DBC675
165-192	608-0192	DBC769
195-208	608-0208	DBC818
210-225	608-0225	DBC875
225-250	608-0250	DBC988
252-289	608-0289	DBC1125
285-330	608-0330	DBC1275
310-355	608-0355	DBC1360



CENTRE PUNCH CLAMPS 16mm	
SIZE (mm)	STAINLESS STEEL
38	750-038
45	750-045
51	750-051
57	750-057
64	750-064
76	750-075
102	750-100
114	750-114
127	750-125



COBRA CLAMPS		
SIZE (mm)	CODE	COLOUR
8.0-9.0	725-090	WHITE
8.5-9.5	725-095	YELLOW
9.0-10.0	725-100	GREEN
9.5-10.5	725-105	PURPLE
10.0-11.0	725-110	BLACK
10.5-11.5	725-115	WHITE
11.0-12.0	725-120	YELLOW
11.5-12.5	725-125	GREEN
12.0-13.5	725-135	PURPLE
12.5-14.0	725-140	BLACK
13.5-15.0	725-150	YELLOW
14.5-16.0	725-160	PURPLE
15.5-17.0	725-170	WHITE
16.5-18.0	725-180	GREEN
17.5-19.0	725-190	BLACK
18.5-20.0	725-200	YELLOW
19.5-21.0	725-210	PURPLE
20.5-22.0	725-220	WHITE
21.5-23.0	725-230	GREEN
22.5-24.0	725-240	BLACK
23.5-25.0	725-250	YELLOW
24.5-26.0	725-260	PURPLE
25.5-27.0	725-270	WHITE
26.5-28.0	725-280	GREEN
27.5-29.0	725-290	BLACK
28.5-30.0	725-300	YELLOW
29.5-31.0	725-310	PURPLE
30.5-32.0	725-320	WHITE
34.0-36.0	725-360	GREEN
36.0-38.0	725-380	BLACK

OETIKER 2-EAR CLAMPS		
SIZE (mm)	ZINC	STAINLESS STEEL
3.4-5.0	715-0305	-
5.0-7.0	715-0507	-
7.0-9.0	715-0709	715S-0709
9.0-11.0	715-0911	715S-0911
11.0-13.0	715-1113	715S-1113
13.0-15.0	715-1315	715S-1315
15.0-18.0	715-1518	715S-1518
17.0-20.0	715-1720	715S-1720
19.0-22.0	715-1922	715S-1922
20.0-23.0	715-2023	715S-2023
22.0-25.0	715-2225	715S-2225
23.0-27.0	715-2327	715S-2327
25.0-28.0	715-2528	715S-2528
28.0-31.0	715-2831	715S-2831
31.0-34.0	715-3134	715S-3134
34.0-37.0	715-3437	715S-3437
37.0-40.0	715-3740	-
40.0-43.0	715-4043	-
43.0-46.0	715-4346	-



OETIKER PINCERS
CODE: 715-TOOL



COBRA CLIP HAND TOOL
CODE: 725-TOOL

MOUNTINGS



RUBBER LINED P-CLIP			
SIZE (mm)	ZINC	S/S 316	ZINC
	M6 HOLE		M8 HOLE
4	705-004	705S-004	-
5	705-005	705S-005	-
6	705-006	705S-006	707-006
8	705-008	705S-008	707-008
9	705-009	705S-009	-
10	705-010	705S-010	707-010
12	705-012	705S-012	707-012
13	705-013	705S-013	707-013
14	705-014	705S-014	707-014
15	705-015	705S-015	707-015
16	705-016	705S-016	707-016
18	705-018	705S-018	707-018
19	705-019	705S-019	707-019
22	705-022	705S-022	707-022
25	705-025	705S-025	707-025
27	705-027	705S-027	707-027
29	705-029	705S-029	707-029
32	705-032	705S-032	707-032
35	705-035	-	707-035
38	705-038	705S-038	707-038
45	705-045	705S-045	707-045
51	705-051	705S-051	707-051
55	705-055	705S-055	707-055
57	705-057	705S-057	707-057
64	705-064	705S-064	707-064



GALV HEAVY DUTY PIPE SUPPORT			
SIZE (NB)	SIZE (mm)	STANDARD	YOKE
2"	60	MBPS2-050	MBPSY-050
2.1/2"	76	MBPS2-065	MBPSY-065
3"	89	MBPS2-080	MBPSY-080
4"	114	MBPS2-100	MBPSY-100
6"	165	MBPS2-150	MBPSY-150
8"	219	MBPS2-200	MBPSY-200
10	273	MBPS2-250	MBPSY-250

ZINC MEDIUM DUTY PIPE SUPPORT (M10)		
SIZE (NB)	SIZE (mm)	CODE
1/2"	21	MBPS-015
3/4"	27	MBPS-020
1"	34	MBPS-025
1.1/4"	43	MBPS-032
1.1/2"	51	MBPS-040
2"	60	MBPS-050
2.1/2"	76	MBPS-065
3"	89	MBPS-080
4"	114	MBPS-100
6"	165	MBPS-150



GALVANISED U-BOLTS			
SIZE (NB)	SIZE (mm)	THREAD SIZE	CODE
1/2"	21	M10	GUB-015
3/4"	27		GUB-020
1"	34		GUB-025
1.1/4"	43		GUB-032
1.1/2"	51		GUB-040
2"	60		GUB-050
2.1/2"	76	M12	GUB-065
3"	89		GUB-080
3.1/2"	102		GUB-090
4"	114		GUB-100
5"	140		GUB-125
6"	168		GUB-150
8"	219	M16	GUB-200
10"	273	M20	GUB-250
12"	324		GUB-300
14"	356		GUB-350
16"	406		GUB-400
18"	457	M24	GUB-450
20"	508		GUB-500
24"	610		GUB-600

STAUFF CLAMPS (COMPLETE)		
SIZE (mm)	SINGLE	TWIN
6.4	SC-006	SCT-006
9.5	SC-010	SCT-010
12.7	SC-012	SCT-012
14.0	SC-014	SCT-014
16.0	SC-016	SCT-016
19.0	SC-019	SCT-019
20.0	SC-020	SCT-020
22.0	SC-022	SCT-022
25.0	SC-025	SCT-025
28.0	SC-028	SCT-028
30.0	SC-030	SCT-030
35.0	SC-035	SCT-035
44.5	SC-045	SCT-045
50.7	SC-050	SCT-050
60.3	SC-060	SCT-060
70.0	SC-070	SCT-070
76.0	SC-076	SCT-076
88.9	SC-090	SCT-090
102.0	SC-100	SCT-100



CABLE TIES			
BLACK NYLON (PACK OF 100)		STAINLESS STEEL 316 (PACK OF 10)	
SIZE	CODE	SIZE	CODE
2.5 x 100	CAB-B3100	4.6 x 100	CAB-S5100
3.2 x 150	CAB-B3150	5.0 x 200	CAB-S5200
4.8 x 200	CAB-B5200	5.0 x 360	CAB-S5360
4.8 x 290	CAB-B5290	8.0 x 360	CAB-S8360
4.8 x 370	CAB-B5370	8.0 x 520	CAB-S8520
7.6 x 370	CAB-B8370	-	-
7.6 x 540	CAB-B8540	-	-
8.8 x 700	CAB-B9700	-	-



CABLE TIE MOUNTING
CODE: CAB-BM28

NUTS & BOLTS



BOLT, NUT & WASHER GALVANISED STRUCTURAL ASSEMBLIES (8.8 HIGH TENSILE AS1252)				
LENGTH (mm)	M12	M16	M20	M24
30	FTP-BNW1230	-	-	-
35	FTP-BNW1235	-	-	-
40	FTP-BNW1240	FTP-BNW1640	FTP-BNW2040	-
45	FTP-BNW1245	FTP-BNW1645	FTP-BNW2045	-
50	FTP-BNW1250	FTP-BNW1650	FTP-BNW2050	-
55	FTP-BNW1255	FTP-BNW1655	FTP-BNW2055	-
60	FTP-BNW1260	-	FTP-BNW2060	-
65	FTP-BNW1265	FTP-BNW1665	FTP-BNW2065	FTP-BNW2465
70	FTP-BNW1270	FTP-BNW1670	FTP-BNW2070	FTP-BNW2470
75	FTP-BNW1275	FTP-BNW1675	FTP-BNW2075	FTP-BNW2475
80	-	FTP-BNW1680	FTP-BNW2080	-
85	-	-	FTP-BNW2085	-
90	-	FTP-BNW1690	FTP-BNW2090	-
100	-	FTP-BNW16100	FTP-BNW20100	FTP-BNW24100
110	-	FTP-BNW16110	FTP-BNW20110	FTP-BNW24110
120	-	FTP-BNW16120	FTP-BNW20120	FTP-BNW24120
130	-	FTP-BNW16130	FTP-BNW20130	-
140	-	-	FTP-BNW20140	-
150	-	FTP-BNW16150	FTP-BNW20150	FTP-BNW24150
160	-	-	FTP-BNW20160	-
180	-	-	FTP-BNW20180	-
190	-	-	FTP-BNW20190	-



STRUCTURAL GALVANISED COMPONENTS			
SIZE	THREADED ROD CLASS 8.8 DIN975	HEX NUT CLASS 8 AS1252	WASHER AS1252
M12	FTP-R12	FTP-N12	FTP-W12
M16	FTP-R16	FTP-N16	FTP-W16
M20	FTP-R20	FTP-N20	FTP-W20
M24	FTP-R24	FTP-N24	FTP-W24
M30	FTP-R30	FTP-N30	FTP-W30

ADDITIONAL GRADES INCLUDING STAINLESS STEEL AVAILABLE IN BULK QUANTITIES.



WASHERS & NUTS ZINC HIGH TENSILE				
SIZE	NUT CLASS 8 AS1112.1.	NYLOC NUT CLASS 8 DIN 985	WASHER AS1237	SPRING WASHER DIN 127B
M6	FTP-N06	FTP-NN06	FTP-W06	FTP-WS06
M8	FTP-N08	FTP-NN08	FTP-W08	FTP-WS08
M10	FTP-N10	FTP-NN10	FTP-W10	FTP-WS10
M12	FTP-N12	FTP-NN12	FTP-W12	FTP-WS12



SET SCREWS ZINC C195588 HIGH TENSILE (AS1110.2.)				
LENGTH (mm)	M6	M8	M10	M12
12	FTP-B0612	FTP-B0812	FTP-B1012	-
20	FTP-B0620	FTP-B0820	FTP-B1020	FTP-B1220
30	FTP-B0630	FTP-B0830	FTP-B1030	FTP-B1230
40	FTP-B0640	FTP-B0840	FTP-B1040	FTP-B1240
50	FTP-B0650	FTP-B0850	FTP-B1050	FTP-B1250
60	-	FTP-B0860	FTP-B1060	FTP-B1260
65	-	-	FTP-B1065	FTP-B1265
70	-	FTP-B0870	FTP-B1070	FTP-B1270
75	-	FTP-B0875	FTP-B1075	-
80	-	FTP-B0880	FTP-B1080	FTP-B1280
90	-	FTP-B0890	FTP-B1090	-
100	-	FTP-B08100	FTP-B10100	FTP-B12100
110	-	FTP-B08110	-	-



ZINC DYNA BOLT CLASS 4.6				
LENGTH (mm)	M6	M8	M10	M12
35	FTP-DB0635	-	-	-
40	-	FTP-DB0840	-	-
50	-	-	FTP-DB1050	-
60	FTP-DB0660	FTP-DB0860	FTP-DB1060	FTP-DB1260
80	-	FTP-DB0880	FTP-DB1080	FTP-DB1280
100	-	FTP-DB08100	-	FTP-DB12100
120	-	FTP-DB08120	-	FTP-DB12120

ADDITIONAL GRADES INCLUDING STAINLESS STEEL AVAILABLE IN BULK QUANTITIES.

PIPE



BLACK STEEL PIPE		
SIZE	BLACK PIPE (6m LENGTHS)	
	SCH 40	SCH 80
1/2"	SPS40-015	SPS80-015
3/4"	SPS40-020	SPS80-020
1"	SPS40-025	SPS80-025
1.1/4"	SPS40-032	SPS80-032
1.1/2"	SPS40-040	SPS80-040
2"	SPS40-050	SPS80-050
2.1/2"	SPS40-065	SPS80-065
3"	SPS40-080	SPS80-080
4"	SPS40-100	SPS80-100
6"	SPS40-150	SPS80-150
8"	SPS40-200	SPS80-200

MEDIUM GALVANISED PIPE		
SIZE	GALV PIPE AS1074 (6.5m LENGTHS)	
	PLAIN END	BSP
1/2"	PGMP-1565	PGMB-1565
3/4"	PGMP-2065	PGMB-2065
1"	PGMP-2565	PGMB-2565
1.1/4"	PGMP-3265	PGMB-3265
1.1/2"	PGMP-4065	PGMB-4065
2"	PGMP-5065	PGMB-5065
2.1/2"	PGMP-6565	PGMB-6565
3"	PGMP-8065	PGMB-8065
4"	PGMP-9465	PGMB-9465

STAINLESS STEEL PIPE & TUBE			
SIZE	S/S 316 PIPE (6m LENGTHS)		S/S 316 TUBE (6m LENGTHS)
	SCH 10	SCH 40	1.2mm WALL
1/2"	SSP10-015	SSP40-015	SSST-012
3/4"	SSP10-020	SSP40-020	SSST-020
1"	SSP10-025	SSP40-025	SSST-025
1.1/4"	SSP10-032	SSP40-032	SSST-032
1.1/2"	SSP10-040	SSP40-040	SSST-040
2"	SSP10-050	SSP40-050	SSST-050
2.1/2"	SSP10-065	SSP40-065	SSST-065
3"	SSP10-080	SSP40-080	SSST-080
4"	SSP10-100	SSP40-100	SSST-100
6"	SSP10-150	SSP40-150	SSST-150
8"	SSP10-200	SSP40-200	SSST-200



**PLEASE NOTE PIPE & TUBE AVAILABLE IN CUT & FULL LENGTHS.
FABRICATION & THREADING ALSO AVAILABLE.**

BUTTWELD, FLANGES & PIPE FITTINGS



BUTTWELD REDUCER		
SIZE (mm)	CONCENTRIC REDUCER	ECCENTRIC REDUCER
20 x 15	RWCR-2015	-
25 x 15	RWCR-2515	-
25 x 20	RWCR-2520	-
32 x 15	RWCR-3215	-
32 x 20	RWCR-3220	-
32 x 25	RWCR-3225	-
40 x 15	RWCR-4015	RWER-4015
40 x 20	RWCR-4020	RWER-4020
40 x 25	RWCR-4025	RWER-4025
40 x 32	RWCR-4032	RWER-4032
50 x 20	RWCR-5020	-
50 x 25	RWCR-5025	RWER-5025
50 x 32	RWCR-5032	RWER-5032
50 x 40	RWCR-5040	RWER-5040
65 x 25	RWCR-6525	-
65 x 32	RWCR-6532	-
65 x 40	RWCR-6540	RWER-6540
65 x 50	RWCR-6550	RWER-6550
80 x 25	RWCR-8025	-
80 x 32	RWCR-8032	-
80 x 40	RWCR-8040	RWER-8040
80 x 50	RWCR-8050	RWER-8050
80 x 65	RWCR-8065	RWER-8065
100 x 50	RWCR-9450	RWER-9450
100 x 65	RWCR-9465	RWER-9465
100 x 80	RWCR-9480	RWER-9480
125 x 80	RWCR-9580	RWER-9580
125 x 100	RWCR-9594	RWER-9594
150 x 65	RWCR-9665	RWER-9665
150 x 80	RWCR-9680	RWER-9680
150 x 100	RWCR-9694	RWER-9694
150 x 125	RWCR-9695	RWER-9695
200 x 100	RWCR-9894	RWER-9894
200 x 125	RWCR-9895	RWER-9895
200 x 150	RWCR-9896	RWER-9896
250 x 100	RWCR-X2594	RWER-X2594
250 x 150	RWCR-X2596	RWER-X2596
250 x 200	RWCR-X2598	RWER-X2598
300 x 150	RWCR-X3096	RWER-X3096
300 x 200	RWCR-X3098	RWER-X3098
300 x 250	RWCR-X30X25	RWER-X30X25

BUTTWELD TEE & CAP		
SIZE (mm)	TEE	CAP
15	RWT-012	-
20	RWT-020	-
25	RWT-025	RWC-025
32	RWT-032	RWC-032
40	RWT-040	RWC-040
50	RWT-050	RWC-050
65	RWT-065	RWC-065
80	RWT-080	RWC-080
100	RWT-100	RWC-100
125	RWT-125	RWC-125
150	RWT-150	RWC-150
200	RWT-200	RWC-200
250	RWT-250	RWC-250
300	RWT-300	RWC-300



ADDITIONAL SCHEDULES AND STAINLESS STEEL ALSO AVAILABLE ON REQUEST.



BUTTWELD ELBOWS				
SIZE (mm)	LONG RADIUS 90° ELBOW	SHORT RADIUS 90° ELBOW	LONG RADIUS 45° ELBOW	U-BEND 180°
15	RWE-012	-	RWEF-012	-
20	RWE-020	-	RWEF-020	-
25	RWE-025	RWES-025	RWEF-025	RWEU-025
32	RWE-032	RWES-032	RWEF-032	RWEU-032
40	RWE-040	RWES-040	RWEF-040	RWEU-040
50	RWE-050	RWES-050	RWEF-050	RWEU-050
65	RWE-065	RWES-065	RWEF-065	RWEU-065
80	RWE-080	RWES-080	RWEF-080	RWEU-080
90	RWE-090	-	-	-
100	RWE-100	RWES-100	RWEF-100	RWEU-100
125	RWE-125	RWES-125	RWEF-125	-
150	RWE-150	RWES-150	RWEF-150	-
200	RWE-200	RWES-200	RWEF-200	-
250	RWE-250	RWES-250	-	-
300	RWE-300	RWES-300	-	-



HOSE JOINERS & BUTTWELD TAILS				
	JOINERS		BUTTWELD HOSETAILS	
SIZE	ZINC	S/STEEL	BLACK STEEL	S/STEEL
3/8"	-	W30-010	-	-
1/2"	RZ30-012	W30-012	R28-012	W28-012
3/4"	RZ30-020	W30-020	R28-020	W28-020
1"	RZ30-025	W30-025	R28-025	W28-025
1.1/4"	RZ30-032	W30-032	R28-032	W28-032
1.1/2"	RZ30-040	W30-040	R28-040	W28-040
2"	RZ30-050	W30-050	R28-050	W28-050
2.1/2"	RZ30-065	W30-065	R28-065	W28-065
3"	RZ30-080	W30-080	R28-080	W28-080
4"	RZ30-100	W30-100	R28-100	W28-100
5"	-	W30-125	R28-125	W28-125
6"	-	W30-150	R28-150	W28-150
8"	-	W30-200	R28-200	W28-200
10"	-	W30-250	R28-250	W28-250
12"	-	W30-300	R28-300	W28-300

ADDITIONAL SCHEDULES AND STAINLESS STEEL ALSO AVAILABLE ON REQUEST.



GALV AS1074 BSP PIPE PIECES									
PIPE	1/2"	3/4"	1"	1.1/4"	1.1/2"	2"	2.1/2"	3"	4"
LENGTH	R26G-								
mm									
75	1580	2080	-	-	-	-	-	-	-
100	1594	2094	2594	3294	4094	5094	6594	8094	9494
150	1596	2096	2596	3296	4096	5096	6596	8096	9496
200	1598	2098	2598	3298	4098	5098	6598	8098	9498
250	15X25	20X25	25X25	32X25	40X25	50X25	65X25	80X25	94X25
300	15X30	20X30	25X30	32X30	40X30	50X30	65X30	80X30	94X30
350	15X35	20X35	25X35	32X35	40X35	50X35	65X35	80X35	94X35
400	15X40	20X40	25X40	32X40	40X40	50X40	65X40	80X40	94X40
450	15X45	20X45	25X45	32X45	40X45	50X45	65X45	80X45	94X45
500	15X50	20X50	25X50	32X50	40X50	50X50	65X50	80X50	94X50
600	15X60	20X60	25X60	32X60	40X60	50X60	65X60	80X60	94X60
750	15X75	20X75	25X75	32X75	40X75	50X75	65X75	80X75	94X75
900	15X90	20X90	25X90	32X90	40X90	50X90	65X90	80X90	94X90
1000	15X100	20X100	25X100	32X100	40X100	50X100	65X100	80X100	94X100

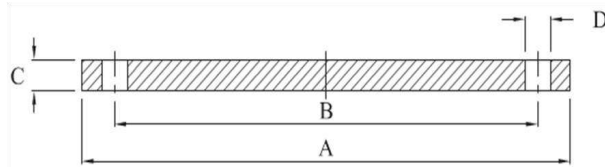
CUSTOM LENGTHS AVAILABLE ON REQUEST



PIPE NIPPLE		
SIZE	BLACK STEEL	S/STEEL
1/4"	R26-006	
3/8"	R26-010	W26-010
1/2"	R26-012	W26-012
3/4"	R26-020	W26-020
1"	R26-025	W26-025
1.1/4"	R26-032	W26-032
1.1/2"	R26-040	W26-040
2"	R26-050	W26-050
2.1/2"	R26-065	W26-065
3"	R26-080	W26-080
4"	R26-100	W26-100

LONG SWEPT BENDS			
SIZE	BLACK STEEL	B/WELD	GALV STEEL
1/4"	R14-006	R15-006	R14G-006
3/8"	R14-010	R15-010	R14G-010
1/2"	R14-012	R15-012	R14G-012
3/4"	R14-020	R15-020	R14G-020
1"	R14-025	R15-025	R14G-025
1.1/4"	R14-032	R15-032	R14G-032
1.1/2"	R14-040	R15-040	R14G-040
2"	R14-050	R15-050	R14G-050
2.1/2"	R14-065	R15-065	R14G-065
3"	R14-080	R15-080	R14G-080
4"	R14-100	R15-100	R14G-100

FLANGE P.C.D. CHART



SIZE	TABLE	PART NUMBER		OD	P.C.D	THK	HOLE	BOLT	#
		SOW	BLIND	A	B	C	D	SIZE	BOLTS
25NB	D	-	-	115	83	12	14	M12 x 45	4
	E	RFE-025	RFEB-025	115	83	12	14	M12 x 45	4
	DIN PN16	RFDI-025	-	115	85	16	14	M12 X 65	4
	ANSI 150	RFA-025	RFAB-025	108	79.4	14	16	1/2 x 2 1/4	4
32NB	D	-	-	120	87	12	14	M12 X 65	4
	E	RFE-032	RFEB-032	120	87	12	14	M12 x 50	4
	DIN PN16	RFDI-032	-	140	100	16	18	M16 X 65	4
	ANSI 150	RFA-032	RFAB-032	117	88.9	16	16	1/2 x 2 1/2	4
40NB	D	-	-	135	98	12	14	M12 x 50	4
	E	RFE-040	RFEB-040	135	98	12	14	M12 x 50	4
	DIN PN16	RFDI-040	-	150	110	16	18	M16 X 65	4
	ANSI 150	RFA-040	RFAB-040	127	98.4	17	16	1/2 x 2 3/4	4
50NB	D	-	-	150	114	12	18	M16 x 60	4
	E	RFE-050	RFEB-050	150	114	12	18	M16 x 60	4
	DIN PN16	RFDI-050	RFDIB-050	165	125	18	18	M16 X 65	4
	ANSI 150	RFA-050	RFAB-050	152	120.6	20	20	5/8 x 3 1/4	4
65NB	D	-	-	165	127	12	18	M16 x 60	4
	E	RFE-065	RFEB-065	165	127	12	18	M16 x 60	4
	DIN PN16	RFDI-065	RFDIB-065	185	145	18	18	M16 X 65	4
	ANSI 150	RFA-065	RFAB-065	178	139.7	23	20	5/8 x 3 1/4	4
80NB	D	-	-	185	146	12	18	M16 x 60	4
	E	RFE-080	RFEB-080	185	146	12	18	M16 x 60	4
	DIN PN16	RFDI-080	RFDIB-080	200	160	20	18	M16 X 75	8
	ANSI 150	RFA-080	RFAB-080	191	152.4	24	20	5/8 x 3 1/2	4
100NB	D	RFD-100	RFDB-100	215	178	12	18	M16 x 65	4
	E	RFE-100	RFEB-100	215	178	13	18	M16 x 65	8
	DIN PN16	RFDI-100	RFDIB-100	220	180	20	18	M16 X 75	8
	ANSI 150	RFA-100	RFAB-100	229	190.5	24	20	5/8 x 3 3/4	8
125NB	D	RFD-125	RFDB-125	255	210	13	18	M16 x 65	8
	E	RFE-125	RFEB-125	255	210	14	18	M16 x 65	8
	DIN PN16	RFDI-125	RFDIB-125	250	210	22	18	M16 X 80	8
	ANSI 150	RFA-125	RFAB-125	254	215.9	24	23	3/4 x 3 3/4	8
150NB	D	RFD-150	RFDB-150	280	235	13	18	M16 x 65	8
	E	RFE-150	RFEB-150	280	235	17	22	M16 X 80	8
	DIN PN16	RFDI-150	RFDIB-150	285	240	22	22	M20 X 80	8
	ANSI 150	RFA-150	RFAB-150	279	241.3	26	23	3/4 x 3 3/4	8
200NB	D	RFD-200	RFDB-200	335	292	13	18	M16 x 65	8
	E	RFE-200	RFEB-200	335	292	19	22	M20 x 65	8
	DIN PN16	RFDI-200	RFDIB-200	240	295	24	22	M20 X 90	12
	ANSI 150	RFA-200	RFAB-200	343	298.4	29	23	3/4 x 4	8
250NB	D	RFD-250	RFDB-250	405	356	16	22	M20 x 75	8
	E	RFE-250	RFEB-250	405	356	22	22	M20 x 75	12
	ANSI 150	RFA-250	RFAB-250	406	361.9	30	26	7/8 x 4 1/2"	12

NATURAL RUBBER GASKETS (3mm)		
SIZE	TABLE 'E'	TABLE 'D'
1/2"	GRE-012	-
3/4"	GRE-020	-
1"	GRE-025	-
1.1/4"	GRE-032	-
1.1/2"	GRE-040	-
2"	GRE-050	-
2.1/2"	GRE-065	-
3"	GRE-080	-
4"	GRE-100	GRD-100
5"	GRE-125	-
6"	GRE-150	GRD-150
8"	GRE-200	GRD-200
10"	GRE-250	GRD-250
12"	GRE-300	GRD-300
14"	GRE-350	-
16"	GRE-400	-



NOVUS 34 FIBRE GASKETS (1.5mm)					
SIZE	TABLE 'E'	ANSI FULL FACE	ANSI RING	DIN16 FULL FACE	DIN16 RING
1/2"	-	GFAF-012	GFA-012	-	-
3/4"	GFE-020	GFAF-020	GFA-020	-	-
1"	GFE-025	GFAF-025	GFA-025	GFDF-025	GFDI-025
1.1/4"	GFE-032	GFAF-032	GFA-032	GFDF-032	GFDI-032
1.1/2"	GFE-040	GFAF-040	GFA-040	GFDF-040	GFDI-040
2"	GFE-050	GFAF-050	GFA-050	GFDF-050	GFDI-050
2.1/2"	GFE-065	GFAF-065	GFA-065	GFDF-065	GFDI-065
3"	GFE-080	GFAF-080	GFA-080	GFDF-080	GFDI-080
4"	GFE-100	GFAF-100	GFA-100	GFDF-100	GFDI-100
5"	GFE-125	-	-	-	-
6"	GFE-150	GFAF-150	GFA-150	GFDF-150	GFDI-150
8"	GFE-200	GFAF-200	GFA-200	GFDF-200	GFDI-200
10"	GFE-250	GFAF-250	GFA-250	-	-
12"	GFE-300	GFAF-300	GFA-300	-	-
14"	GFE-350	GFAF-350	GFA-350	-	-
16"	GFE-400	-	-	-	-

OTHER SPECIALTY GASKETS ALSO AVAILABLE.

MINING



CLAW COUPLING x MALE BSP		
SIZE	TYPE 'A'	SURELOCK
3/8"	800-AM10	800-SM10
1/2"	800-AM12	800-SM12
3/4"	800-AM20	800-SM20
1"	800-AM25	800-SM25
1.1/4"	800-AM32	800-SM32
1.1/2"	-	800-SM38
2"	-	800-SM50
3"	-	800-SM75

CLAW COUPLING x HOSETAIL		
SIZE	TYPE 'A'	SURELOCK
3/8"	800-AT10	800-ST10
1/2"	800-AT12	800-ST12
3/4"	800-AT20	800-ST20
1"	800-AT25	800-ST25
1.1/4"	800-AT32	800-ST32
1.1/2"	-	800-ST38
2"	-	800-ST50
3"	-	800-ST75



CLAW COUPLING x FEMALE BSP		
SIZE	TYPE 'A'	SURELOCK
3/8"	800-AF10	800-SF10
1/2"	800-AF12	800-SF12
3/4"	800-AF20	800-SF20
1"	800-AF25	800-SF25
1.1/4"	800-AF32	800-SF32
1.1/2"	-	800-SF38
2"	-	800-SF50
3"	-	800-SF75

ADJUSTABLE CLAW CLAMP	
SIZE	CODE
3/8"	800-C10
1/2"	800-C12
3/4"	800-C20
1"	800-C25
1.1/4"	800-C32
1.1/2"	800-C38
2"	800-C50
3"	800-C75



WHIPCHECKS	
SIZE (mm)	CODE
12-32	800-W1232
38-100	800-W4094

BLANK ENDS	
TYPE	CODE
TYPE 'A'	800-ABL
SURELOCK	800-SBL

MINSUP SAFETY PIN
CODE: 800-PIN

SOME FITTINGS ALSO AVAILABLE IN STAINLESS STEEL.

SHOULDERED / VICTAULIC FITTINGS

SHOULDERED FITTINGS				
SIZE	RING	COUPLING	SEAL	BLANK
2"	VSR-050	VSC-050	VSS-050	VSBL-050
3"	VSR-080	VSC-080	VSS-080	VSBL-080
4"	VSR-100	VSC-100	VSS-100	VSBL-100
6"	VSR-150	VSC-150	VSS-150	VSBL-150
8"	VSR-200	VSC-200	VSS-200	VSBL-200
10"	VSR-250	VSC-250	VSS-250	-
12"	VSR-300	VSC-300	VSS-300	-

SHOULDERED ELBOWS				
SIZE	ELBOWS 90°		ELBOWS 45°	
	STANDARD	LONG	STANDARD	LONG
2"	VSE-050	VSEL-050	VSEF-050	VSEFL-050
3"	VSE-080	VSEL-080	VSEF-080	VSEFL-080
4"	VSE-100	VSEL-100	VSEF-100	VSEFL-100
6"	VSE-150	VSEL-150	VSEF-150	VSEFL-150
8"	VSE-200	VSEL-200	VSEF-200	VSEFL-200

SHOULDERED BENDS				
SIZE	BENDS 90°		BENDS 45°	
	STANDARD	LONG	STANDARD	LONG
2"	VSBD-050	VSBDL-050	VSBD-050	VSBDL-050
3"	VSBD-080	VSBDL-080	VSBD-080	VSBDL-080
4"	VSBD-100	VSBDL-100	VSBD-100	VSBDL-100
6"	VSBD-150	VSBDL-150	VSBD-150	VSBDL-150
8"	VSBD-200	VSBDL-200	VSBD-200	VSBDL-200

SHOULDERED ADAPTORS & TEES				
SIZE	FLANGED ADAPTOR		TEE	
	STANDARD	LONG	STANDARD	LONG
2"	VSFA-050	VFAL-050	VST-50	VSTL-050
3"	VSFA-080	VFAL-080	VST-80	VSTL-080
4"	VSFA-100	VFAL-100	VST-100	VSTL-100
6"	VSFA-150	VFAL-150	VST-150	VSTL-150
8"	VSFA-200	VFAL-200	VST-200	VSTL-200

A FULL RANGE OF GROOVED FITTINGS AVAILABLE IN PAINTED & GALV.

SHOULDERED REDUCERS				
SIZE	REDUCING TEE		SHOULDERED ADAPTOR x BSP	
	STANDARD	LONG	STANDARD	LONG
3" x 2"	VSTR-8050	VSTR-L-8050	VSCR-8050	VSCR-L-8050
4" x 2"	VSTR-9450	VSTR-L-9450	VSCR-9450	VSCR-L-9450
4" x 3"	VSTR-9480	VSTR-L-9480	VSCR-9480	VSCR-L-9480
6" x 2"	VSTR-9650	VSTR-L-9650	VSCR-9650	VSCR-L-9650
6" x 3"	VSTR-9680	VSTR-L-9680	VSCR-9680	VSCR-L-9680
6" x 4"	VSTR-9694	VSTR-L-9694	VSCR-9694	VSCR-L-9694
8" x 2"	VSTR-9850	VSTR-L-9850	-	-
8" x 3"	VSTR-9880	VSTR-L-9880	-	-
8" x 4"	VSTR-9894	VSTR-L-9894	VSCR-9894	VSCR-L-9894
8" x 6"	VSTR-9896	VSTR-L-9896	VSCR-9896	VSCR-L-9896

SHOULDERED ADAPTORS & TEES				
SIZE	JUNCTION ADAPTORS		SHOULDERED ADAPTOR x BSP	
	CROSS	Y-PIECE	STANDARD	LONG
2"	VSCR-050	VS-Y-050	VSA-050	VSAL-050
3" x 2"	-	-	VSA-8050	VSAL-8050
3"	VSCR-080	VS-Y-080	VSA-080	VSAL-080
4"	VSCR-100	VS-Y-100	VSA-100	VSAL-100
6"	VSCR-150	VS-Y-150	-	-
8"	VSCR-200	VS-Y-200	-	-

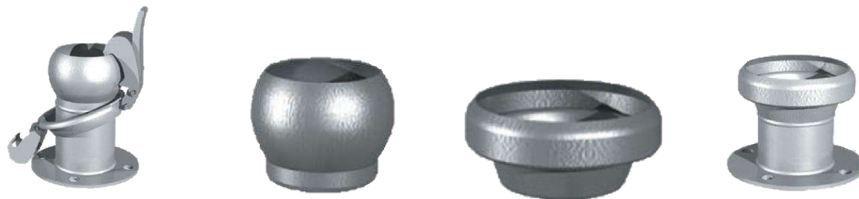


A FULL RANGE OF GROOVED FITTINGS AVAILABLE IN PAINTED & GALV.

DEWATERING



DALLAI DEWATERING					
SIZE	MALE BALL x HOSETAIL	CLOSURE RING	FEMALE SPIGGOT x HOSETAIL	RUBBER O-RING	COMPLETE SET ALL 4
3"	100-080	104-080	101-080	105-080	100S-080
4"	100-100	104-100	101-100	105-100	100S-100
6"	100-150	104-150	101-150	105-150	100S-150
8"	100-200	104-200	101-200	105-200	100S-200



DEWATERING FITTINGS				
SIZE	MALE BALL x FLANGE D/E	MALE BALL WELD ON	FEMALE BALL WELD ON	FEMALE SPIGGOT x FLANGE D/E
3"	102-080	112-080	111-080	103-080
4"	102-100	112-100	111-100	103-100
6"	102-150	112-150	111-150	103-150
8"	102-200	112-200	111-200	103-200



STRAINERS & HOSETAILS					
SIZE	HOSETAIL F/V STRAIN	THREADED STRAINER	FLANGED FOOTVALVE	HOSETAIL STRAINER	FLANGED HOSETAIL
2"	-	136-050	-	-	RG38-050
2.1/2"	-	-	-	-	RG38-065
3"	130-080	136-080	131-080	132-080	RG38-080
4"	130-100	136-100	131-100	132-100	RG38-100
6"	130-150	136-150	131-150	132-150	RG38-150
8"	130-200	-	131-200	-	RG38-200
10"	-	-	131-250	-	RG38-250
12"	-	-	131-300	-	RG38-300

FIRE FIGHTING & NOZZLES



BIC FITTINGS				
SIZE	MALE BIC x FBSP	FEMALE BIC x FBSP	MALE BIC x HOSETAIL	FEMALE BIC x HOSETAIL
1.1/2"	BIC-A40	BIC-D40	BIC-E40	BIC-C40
2"	BIC-A50	BIC-D50	BIC-E50	BIC-C50
2.1/2"	BIC-A65	BIC-D65	BIC-E65	BIC-C65



FIRE HOSE LAYFLAT		
SIZE	RAPIER (2000kpa)	FORESTRY (1500kpa)
1.1/2"	C51-038	C43-038
2"	C51-050	C43-050
2.1/2"	C51-063	C43-063

BLACK FIRE HOSE		
SIZE	PVC (145psi)	RUBBER (200psi)
3/4"	A09-020	E03-020
1"	A09-025	E03-025



3/4" FIRE HOSE REELS x 36m		
CODE	TYPE	COMPLETE WITH HOSE, NOZZLE, VALVES & MOUNTING
HRFW-2036	WALL MOUNT	
HRFS-2036	SWING ARM	

OTHER FIRE FITTINGS AVAILABLE ON REQUEST.



PLASTIC ADJUSTABLE NOZZLES				
SIZE	QUELL NOZZLE x TAIL	PLASTIC NOZZLE x TAIL	PLASTIC NOZZLE x FBSP	PLASTIC NOZZLE x FBSP
3/4"	618-Q20	618P-T20	618P-F20	618-BGC
1"	618-Q25	618P-T25	618P-F25	-



BRASS ADJUSTABLE NOZZLES			
SIZE	BRASS NOZZLE x FBSP	BLACKOUT NOZZLE	BRASS NOZZLE x TAIL
3/4"	-	618BO-020	618B-T20
1"	618B-F25	618BO-025	618B-T25
1.1/2"	618B-F40	618BO-040	-



BRASS DIRECTOR NOZZLES		
SIZE	BALL VALVE DIRECTOR	DIRECTOR
1/2"	618-BV12	618-D12
3/4"	618-BV20	618-D20
1"	618-BV25	-

WASHDOWN GUNS		
SIZE	PISTOL GRIP INSULATED	DINGA HEAVY DUTY
1/2"	-	618-DINGA
3/4"	618-INS	-

HOSE REELS



MANUAL AIR HOSE REEL (1/2" x 40m)
CODE: HRJA-1240
Featuring a 360° rotary base and fold away winding system. This reel is ideal for industrial, automotive and home workshops.



RETRACTABLE AIR HOSE REEL (5/16" x 8m)
CODE: HRJA-0808
Featuring an adjustable hose stopper and 180° pivot, this reel is ideal for smaller work stations where lower air flow is required.



RETRACTABLE AIR HOSE REEL
3/8" x 20m CODE: HRJA-1020 1/2" x 15m CODE: HRJA-1215
Featuring an adjustable hose stopper and unique hose layering system that prevents tangles and jams. This reel is ideal for industrial, automotive and home workshops.



WATER HOSE REEL (1/2" x 20m)
CODE: HRJW-1220
Featuring an adjustable hose stopper and unique hose layering system that prevents tangles and jams this reel is ideal for garden and domestic/industrial applications.

TWIN LINE OXY ACETYL REEL (1/4" x 15m)
CODE: HROA-0615
Featuring a heavy duty powdercoated steel case this reel is ideal for tray tops for the construction industry.



MANUAL 'A' FRAME HOSE REEL					
CODE	PORT SIZE BSP	HOSE CAPACITY	BARREL DIAMETER	DISC DIAMETER	BARREL WIDTH
HRM-1230	12mm	30m	150	328	150
HRM-2030	19mm	30m	150	380	300
HRM-2530	25mm	30m	150	480	300
HRM-2550	25mm	50m	150	600	400
HRM-LAY	LAYFLAT HOSE REEL				



LARGER SIZES & ADDITIONAL SPECIALTY REELS ALSO AVAILABLE.

PVC PRESSURE HOSE

CLEAR BRAIDED TMP II FOOD HOSE

Suitable for food contact, petroleum based products, air and water. Extremely flexible and kink resistant.

Temp: -5°C to 60°C

Colour: Clear outer cover with blue/yellow stripe, food grade tube and cover that meets AS2070 1999.

CODE	NOMINAL (mm)		W.P.	WEIGHT	COIL LENGTH
	I.D.	O.D.	PSI	kg/mt	(mt)
A03-006	6.0	10.2	200	0.08	20, 100, 300
A03-008	8.0	12.4	200	0.10	20, 100, 300
A03-010	10.0	15.0	200	0.14	20, 80, 100, 300
A03-012	12.5	18.1	200	0.19	20, 55, 100, 250
A03-016	16.0	22.8	200	0.30	20, 100
A03-020	20.0	27.6	200	0.40	20, 100
A03-025	25.0	33.4	200	0.54	20, 100
A03-032	31.5	40.9	175	0.97	20, 60
A03-038	38.0	49.8	175	1.32	20, 40
A03-050	50.0	64.2	131	2.12	20, 40



CLEAR VINYL TUBING

Non toxic food and beverage hose that can be used as a general purpose low pressure delivery and drain line.

Temp: -5°C to 60°C

Colour: Clear tube that meets AS2070 1999.

CODE	NOMINAL (mm)		W.P.	WEIGHT	COIL LENGTH
	I.D.	O.D.	PSI	g/mt	(mt)
A15-003	3.0	5.0	125	17	30, 300
A15-004	4.0	7.0	120	35	30
A15-005	5.0	8.0	115	42	30, 100
A15-006	6.0	9.0	90	48	30, 100
A15-008	8.0	11.0	75	61	30, 150
A15-010	10.0	13.0	60	74	30, 130
A15-011	10.0	15.0	90	134	30
A15-012	12.5	15.5	70	90	30, 90
A15-016	16.0	19.0	60	113	30, 60
A15-020	19.0	23.0	50	181	30
A15-025	25.0	31.0	50	360	30
A15-032	32.0	38.0	40	452	30
A15-038	38.0	46.0	40	712	30
A15-050	50.0	60.0	40	1165	15



FIRE REEL

For use on stationary or mobile hose reels in commercial and public areas, also an excellent economical water delivery hose.

Temp: -5°C to 60°C

Colour: Black ribbed cover with a black tube that conforms to AS/NZ1221.

CODE	NOMINAL (mm)		W.P.	WEIGHT	COIL LENGTH
	I.D.	O.D.	PSI	kg/mt	(mt)
A09-020	19.0	26.0	145	0.36	20,36,100
A09-025	25.0	31.5	145	0.55	20,36,100



OTHER SPECIALTY HOSES AVAILABLE ON REQUEST.



NITTO PRE-FITTED AIR

These pre-assembled Nitto hoses are available in 3/8" & 1/2" premium rubber hose. They come in 10m, 20m or 30m lengths to suit all your workshop requirements.

CODE	NOMINAL (mm)		W.P.
	I.D.	LENGTH	PSI
A02TF-1010	10.0	10	300
A02TF-1020		20	300
A02TF-1030		30	300
A02TF-1210	12.0	10	300
A02TF-1220		20	300
A02TF-1230		30	300



SUPER ULTRAFLEX

A superior, flexible air and water hose where long life and wearing tolerance is required. Exceeds AS/NZ2554 Class B.

Temp: -5°C to 60°C

Colour: Yellow ribbed outer cover with blue stripe, black inner tube.

CODE	NOMINAL (mm)		W.P.	WEIGHT	COIL LENGTH
	I.D.	O.D.	PSI	kg/mt	(mt)
A01-006	6.0	12.8	290	0.13	20, 100, 300
A01-008	8.0	14.8	290	0.16	20, 100, 300
A01-010	10.0	16.6	290	0.17	20, 100, 300
A01-012	12.5	19.3	290	0.19	20, 80, 100, 250
A01-020	20.0	29.0	230	0.45	20, 55, 100
A01-025	25.0	34.6	230	0.62	20, 100
A01-032	31.5	42.9	230	1.15	20, 100
A01-038	38.0	50.6	230	1.56	20, 60
A01-050	50.0	63.0	230	2.40	20, 40



BLUE COLD FLEX

For air, water and fluid transfer. Oil mist resistant. Meets AS/NZ2554 Class B.

Temp: -5 to 60°C

Colour: Blue ribbed cover with a black inner. Both PVC.

CODE	NOMINAL (mm)		W.P.	WEIGHT	COIL LENGTH
	I.D.	O.D.	PSI	kg/mt	(mt)
A02-006	6.0	11.5	290	0.13	20, 100, 300
A02-008	8.0	14	290	0.13	20, 100, 300
A02-010	10.0	16.6	290	0.18	20, 30, 100, 200
A02-012	12.5	18.9	290	0.22	20, 50, 100, 200
A02-020	19.0	26.5	230	0.51	20, 100
A02-025	25.0	39.6	230	0.62	20, 100

OTHER SPECIALTY HOSES AVAILABLE ON REQUEST.

DIVERS BREATHING

Air supply for all diving and breathing apparatus, for spray booths and sandblasting.

Temp: -5°C to 60°C

Colour: Smooth yellow pricked cover and white tube that conforms to AS2299 and AS/NZ1716.

CODE	NOMINAL (mm)		W.P. PSI	WEIGHT kg/mt	COIL LENGTH (mt)
	I.D.	O.D.			
A10-008	8.0	14.3	235	0.14	50, 100, 300
A10-010	10.0	17.2	365	0.22	50, 100, 300

**ESTATE BLUELINE**

Premium hose for garden and park watering. Kink, burst and UV resistant.

Temp: -5°C to 60°C

Colour: Outer cover white with blue stripes. Black inner tube.

CODE	NOMINAL (mm)		W.P. PSI	WEIGHT kg/mt	COIL LENGTH (mt)
	I.D.	O.D.			
A05-012	12.5	19.0	145	0.22	20, 100
A05-020	19.0	26.5	145	0.40	20, 30, 100
A05-025	25.0	34.0	145	0.58	20, 30, 100
A05-032	31.5	42.0	145	0.85	20, 30, 100
A05-038	38.0	49.5	145	1.11	20, 30, 60

**HOT WASH**

Highest grade washdown hose ideal for food preparation areas where milk, fats and other food products are present.

Temp: -5°C to 85°C at low pressures

Colour: White smooth inner and outer tube. TPR cover.

CODE	NOMINAL (mm)		W.P. PSI	WEIGHT kg/mt	COIL LENGTH (mt)
	I.D.	O.D.			
A08-012	12.5	19.7	290	0.28	20,100
A08-020	19.0	28.0	250	0.48	20,100

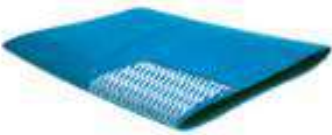


OTHER SPECIALTY HOSES AVAILABLE ON REQUEST.

LAYFLAT & GARDEN HOSE

SUNNY MEDIUM DUTY BLUE LAYFLAT

Low pressure for drainage, irrigation, washdown and other watering application in commercial gardening and construction sites.



CODE	NOMINAL (mm)		W.P.	WEIGHT	COIL LENGTH
	I.D.	O.D.	PSI	g/mt	(mt)
C01-038	40.0	42.5	73	205	100
C01-050	50.0	52.6	65	270	100
C01-063	65.0	68.0	58	380	100
C01-075	75.0	78.4	58	530	100
C01-100	100.0	103.5	58	705	100
C01-125	125.0	128.7	44	935	100
C01-150	150.0	153.9	44	1175	100
C01-200	200.0	204.4	44	1785	100
C01-250	250.0	255.3	36	2650	100
C01-300	300.0	305.1	30	2910	100
C01-400	400.0	405.4	30	4287	100

SUNNY HEAVY DUTY RED LAYFLAT

Higher pressure and abrasion applications at building sites, dams, mines and quarries.



CODE	NOMINAL (mm)		W.P.	WEIGHT	COIL LENGTH
	I.D.	O.D.	PSI	g/mt	(mt)
C03-038	40.0	43.8	152	290	100
C03-050	50.0	54.1	152	420	100
C03-063	65.0	69.3	152	540	100
C03-075	75.0	79.5	130	660	100
C03-100	100.0	105.1	130	1000	100
C03-150	150.0	155.9	100	1680	100
C03-200	200.0	205.9	75	2200	100

AQUAMATE 2 GARDEN HOSE



This premium, heavy duty garden hose is not as kinky as a standard garden hose.

Temp: -5 to 60°C

Colour: Translucent green.

CODE	NOMINAL (mm)		W.P.	WEIGHT	COIL LENGTH
	I.D.	O.D.	PSI	kg/mt	(mt)
A07-012	12.5	16	145	0.15	20, 35, 200
A07-020	20.0	24.5	145	0.28	20, 35, 100
A07-025	25.0	31	145	0.44	20, 35, 75
A07F-012	12mm x 20mt FITTED WITH BRASS GARDEN CONNECTIONS				

GARDEN HOSE FITTINGS ALSO AVAILABLE.

OTHER SPECIALTY HOSES AVAILABLE ON REQUEST.

PVC SUCTION HOSE

CANDY GREY EXTRA FLEXIBLE

Conveyance of water, slurries, sludge, some chemicals, granules, sand and gravel. Grey with a red spiral.

CODE	NOMINAL (mm)		WEIGHT kg/mt	BEND RADIUS	COIL LENGTH (mt)
	I.D.	O.D.			
B01-025	25.0	31.4	0.38	90	20
B01-032	31.8	38.6	0.51	120	20
B01-038	38.4	45.6	0.67	150	20
B01-050	50.8	59.6	1.03	200	20
B01-063	63.7	73.3	1.45	250	20
B01-075	76.0	88.0	2.25	330	20
B01-100	102.2	116.0	3.04	471	20
B01-150	150.0	170.0	6.46	1100	20

*150mm STANDARD GREY ONLY



LIGHT WEIGHT BLUE FOOD SUCTION

Food grade fluid transfer for use in wineries, dairies or processing plants. Conforms to AS2070, European standard EU2002-72-EC. Certified phenol free. Clear with a blue spiral.

CODE	NOMINAL (mm)		WEIGHT kg/mt	BEND RADIUS	COIL LENGTH (mt)
	I.D.	O.D.			
B20-020	19.3	24.9	0.24	55	20, 40
B20-025	25.2	31.0	0.37	75	20, 40
B20-032	31.8	37.8	0.44	100	20, 40
B20-038	38.4	45.2	0.56	140	20, 40
B20-045	44.4	51.8	0.70	160	20, 40
B20-050	50.8	58.8	0.85	200	20, 40
B20-063	63.7	72.3	1.18	240	20
B20-075	76.0	85.6	1.42	350	20
B20-100	102.2	114.2	2.52	400	20



CLEAR WIRE FOOD

Multipurpose suction and discharge of food, beverage and other liquids, even slurries. Clear with a steel spiral.

CODE	NOMINAL (mm)		WEIGHT kg/mt	BEND RADIUS	COIL LENGTH (mt)
	I.D.	O.D.			
B22-006	6.0	12.2	0.13	30	60
B22-010	10.0	16.0	0.17	50	60
B22-012	12.0	18.0	0.18	50	30
B22-016	16.0	22.0	0.23	70	30
B22-020	19.0	26.0	0.34	90	30
B22-025	25.0	33.0	0.51	110	30
B22-032	32.0	40.0	0.65	140	30
B22-038	38.0	47.0	0.80	170	30
B22-050	51.0	60.0	1.20	230	30
B22-063	64.0	76.0	1.95	280	30
B22-075	76.0	89.0	2.70	340	30
B22-100	102.0	116.0	3.40	460	30



OTHER SPECIALTY HOSES AVAILABLE ON REQUEST.



STANDARD BLUELINE OIL & TANKER

Blue PVC used for the collection of waste trucks, pumping contents of grease pits, sewerage collection and pumping of most chemicals.

CODE	NOMINAL (mm)		WEIGHT kg/mt	BEND RADIUS	COIL LENGTH (mt)
	I.D.	O.D.			
B05-025	25.0	32.0	0.41	65	20
B05-032	31.8	39.0	0.54	100	20
B05-038	38.4	46.2	0.70	150	20
B05-050	50.8	60.0	1.07	190	20
B05-063	63.7	74.1	1.50	230	20
B05-075	76.0	89.0	2.25	330	20

ALSO AVAILABLE IN BLACK (BLACK BOSS B02)



PREMIUM SUPER 'E' HD

Thick walled yet extremely flexible blue suction/delivery hose for diesel, oils, greases and lubricants.

CODE	NOMINAL (mm)		WEIGHT kg/mt	BEND RADIUS	COIL LENGTH (mt)
	I.D.	O.D.			
B03-025	25.2	34.0	0.55	80	20
B03-032	31.8	41.0	0.70	120	20
B03-038	38.4	48.0	0.87	180	20
B03-050	50.8	62.0	1.33	220	20
B03-063	63.7	76.0	1.81	270	20
B03-075	76.0	90.0	2.44	350	20
B03-100	102.0	117.0	3.41	55	20



RED CLARET WINE TRANSFER

Conveyance of wine and spirits up to 28% alcohol content. Clear with a claret spiral. Conforms to AS2070, European standard EU2002-72-EC. Certified phenol free.

CODE	NOMINAL (mm)		WEIGHT kg/mt	BEND RADIUS	COIL LENGTH (mt)
	I.D.	O.D.			
B28-025	25.2	34.0	0.60	160	20
B28-032	31.8	41.0	0.71	190	20
B28-038	38.0	48.0	0.82	230	20
B28-050	50.8	62.0	1.20	290	20
B28-063	63.7	76.0	1.73	360	20
B28-075	76.0	90.0	2.29	450	20
B28-100	102.0	117.0	3.33	640	20



CLEARVIEW SP

This premium beverage hose is designed to outperform all other hoses in the wine and food industry. Its specific construction allows a versatile use for suction and pressure. Clear with a blue spiral including braid.

CODE	NOMINAL (mm)		WEIGHT kg/mt	BEND RADIUS	COIL LENGTH (mt)
	I.D.	O.D.			
B23-025	25.0	35.4	0.68	130	20, 30
B23-038	38.0	49.9	1.01	220	20, 30
B23-050	50.0	64.4	1.67	300	20, 30
B23-075	76.0	92.4	2.57	490	20, 30

OTHER SPECIALTY HOSES AVAILABLE ON REQUEST.

CLEAR BLACK AIRSEEDER

Suitable for Primary, secondary and tertiary air seeder lines. Clear with black rigid PVC spiral.

CODE	NOMINAL (mm)		WEIGHT kg/mt	BEND RADIUS	COIL LENGTH (mt)
	I.D.	O.D.			
B41-025	25.2	31.4	0.34	120	20
B41-032	31.7	38.4	0.47	150	20
B41-038	37.8	45.4	0.62	200	20
B41-045	44.8	52.0	0.70	240	20
B41-050	50.8	60.0	0.93	300	20
B41-063	64.2	73.8	1.43	400	20
B41-075	76.0	87.4	2.02	450	20



TIGERTAIL

Extremely flexible hose. Applications include the pumping of fuel, chemicals, sewerage and fish farming. Black with yellow spiral.

CODE	NOMINAL (mm)		WEIGHT kg/mt	BEND RADIUS	COIL LENGTH (mt)
	I.D.	O.D.			
B54-050	50.8	61.0	0.88	220	20
B54-063	63.7	77.0	1.27	270	20
B54-075	76.0	91.0	1.62	350	20
B54-100	102.0	118.0	2.43	450	20
B54-125	127.8	149.0	3.99	475	20
B54-150	150.0	172.0	5.10	500	20
B54-200	200.0	224.0	7.55	650	20



WHITE URETHANE SUCTION HOSE

Outstanding abrasion resistant qualities due to the inclusion of urethane rubber. The latest and most popular product for soil and rock removal, or vacuum diggers and street sweepers, and for longevity with aggressive seed and fertilising.

CODE	NOMINAL (mm)		WEIGHT kg/mt	BEND RADIUS	COIL LENGTH (mt)
	I.D.	O.D.			
B51-032	32.0	40.5	0.39	250	20
B51-038	38.4	48.0	0.45	310	20
B51-050	50.8	61.0	0.76	350	20
B51-063	63.7	77.0	1.46	370	20
B51-075	76.0	91.0	1.77	400	20
B51-100	102.0	118.0	3.48	500	20
B51-125	127.8	149.0	5.70	550	10, 20
B51-150	150.0	172.0	6.63	600	10, 20
B51-200	203.0	227.0	10.59	650	10, 20



ANTI-STATIC SUCKERFLEX

This lightweight highly flexible abrasion resistant hose is ideal for the transfer of wet and dry industrial vacuum and pumping applications where anti-static properties are required.

CODE	NOMINAL (mm)		WEIGHT kg/mt	BEND RADIUS	COIL LENGTH (mt)
	I.D.	O.D.			
B65-038	38.0	48.0	0.57	76	30
B65-050	50.0	61.0	0.80	102	30
B65-063	63.0	76.0	1.14	127	30
B65-075	76.0	90.0	1.56	152	30
B65-100	102.0	118.0	2.50	204	30
B65-125	127.0	146.0	3.57	230	30
B65-150	152.0	174.0	4.73	305	30
B65-200	203.0	231.0	8.52	408	15



OTHER SPECIALTY HOSES AVAILABLE ON REQUEST.



INDUSTRIAL BARFLO

Low volume water, dust collector, ventilation duct and secondary and tertiary air seeder lines. Black.

CODE	NOMINAL (mm)		WEIGHT kg/mt	BEND RADIUS	COIL LENGTH (mt)
	I.D.	O.D.			
B10-012	12.5	18.9	0.10	50	20
B10-016	16.0	21.3	0.13	65	20
B10-020	19.0	26.0	0.20	65	20
B10-025	25.0	32.5	0.25	70	20
B10-028	28.0	35.3	0.28	80	20
B10-030	30.5	39.5	0.31	85	20
B10-031	31.5	42.0	0.39	85	20
B10-032	32.0	41.0	0.38	90	20
B10-033	33.5	43.7	0.40	90	20
B10-035	35.0	45.0	0.42	90	20
B10-038	38.0	47.3	0.45	100	20
B10-044	44.0	53.8	0.48	110	20
B10-050	50.0	63.3	0.85	125	20
B10-063	63.0	74.3	1.00	200	20
B10-075	76.0	87.8	1.10	250	20
B10-100	102.0	114.3	2.00	400	20



SANITATION

Smooth bore flexible white hose ideal for sanitation systems in boats and caravans.

CODE	NOMINAL (mm)		WEIGHT kg/mt	BEND RADIUS	COIL LENGTH (mt)
	I.D.	O.D.			
B52-025	25.0	32.0	0.42	120	20
B52-038	38.4	46.2	0.71	200	20



POOLFLOW POOL HOSE

White domestic pool hose used for cleaning pools.

CODE	NOMINAL (mm)		WEIGHT kg/mt	BEND RADIUS	CUFFS to suit
	I.D.	O.D.			
B31-032	32.0	-	0.23	-	B31C-032
B31-038	38.0	-	0.34	-	B31C-038

A 50mm COMMERCIAL VERSION ALSO AVAILABLE.



PROVAC

Grey hose for commercial carpet steam cleaning systems.

CODE	NOMINAL (mm)		WEIGHT kg/mt	BEND RADIUS	COIL LENGTH (mt)
	I.D.	O.D.			
B12-038	38.0	48.5	0.40	90	10, 20
B12-050	50.0	67.5	0.95	110	20

OTHER SPECIALTY HOSES AVAILABLE ON REQUEST.

EXTRUDED RUBBER HOSE

MAXECON GP

General purpose hose that has good resistance to ozone weathering and abrasion.

Tube: Nitrile/SBR Class B

Cover: Red NBR/SBR/PVC blend Class B

Temp: -29°C to 82°C

CODE	NOMINAL (mm)		W.P.	WEIGHT	REEL LENGTH
	I.D.	O.D.	PSI	kg/mt	(mt)
E01-006	6.4	12.7	250	0.12	213
E01-008	7.9	15.9	250	0.21	213
E01-010	9.5	18.3	250	0.25	213
E01-012	12.7	22.4	250	0.36	213
E01-016	15.9	25.4	250	0.42	213
E01-020	19.1	29.5	250	0.54	213
E01-025	25.4	36.6	250	0.73	213
E01-032	31.8	45.2	250	1.16	152
E01-038	38.1	51.6	250	1.34	152



VERSICON

General purpose non conductive oil resistant hose. Has a good resistance to ozone weathering and abrasion.

Tube: Versicon non-conductive

Cover: Red NBR/SBR/PVC blend Class A

Temp: -29°C to -82°C

CODE	NOMINAL (mm)		W.P.	WEIGHT	REEL LENGTH
	I.D.	O.D.	PSI	kg/mt	(mt)
E08-010	9.5	18.0	300	0.27	213
E08-012	12.7	22.4	300	0.37	213
E08-020	19.1	29.5	300	0.62	213
E08-025	25.4	38.1	300	0.94	213



FUEL LINE

Premium automotive fuel line meets SAE30R7 specifications. E06-016 meets SAE J517 100R6. Ozone, oil, grease and abrasion resistant cover.

Tube: Nitrile Class A

Cover: Black Hypalon Class B

Temp: -34°C to 125°C
-40°C to 100°C (16mm)

CODE	NOMINAL (mm)		W.P.	WEIGHT	REEL LENGTH
	I.D.	O.D.	PSI	kg/mt	(mt)
E06-005	4.8	10.4	35	0.10	213
E06-006	6.4	12.7	35	0.13	213
E06-008	7.9	14.2	35	0.16	213
E06-010	9.5	16.0	35	0.18	213
E06-012	12.7	19.2	35	0.23	213
E06-016	15.9	23.5	N/A	0.32	N/A



BLACK EPDM

Designed for conveying air in truck brake systems. Meets DOT FMVSS 106 and SAE J1402 requirements.

Tube: EPDM

Cover: Black Synthetic Class C

Temp: -40°C to 93°C

AIRBRAKE / HEATER HOSE					
CODE	NOMINAL (mm)		W.P.	WEIGHT	REEL LENGTH
	I.D.	O.D.	PSI	kg/mt	(mt)
E03-010	9.5	19.1	300	0.25	100
E03-012	12.7	22.4	300	0.30	100
E03-016	15.9	22.4	35	0.30	152
E03-020	19.0	29.5	200	0.54	100/213
E03-025	25.4	36.6	200	0.73	100/213



OTHER SPECIALTY HOSES AVAILABLE ON REQUEST.



HERCULES 500

Heavy duty air and water hose for use in the mining and industrial sector. MSHA approved with non-conductive cover.

Tube: Nitrile Class A
Cover: Yellow Nitrile Class A
Temp: -40°C to 93°C

CODE	NOMINAL (mm)		W.P.	WEIGHT	REEL LENGTH
	I.D.	O.D.	PSI	kg/mt	(mt)
E09-010	9.5	19.1	500	0.31	213
E09-012	12.7	23.1	500	0.36	213
E09-020	19.1	30.2	500	0.54	213
E09-025	25.4	38.1	500	0.76	213



DARI-PREEN

Premium washdown for use in dairy and food processing industries.

Tube: EPDM
Cover: White EPDM
Temp: -40°C to 93°C

CODE	NOMINAL (mm)		W.P.	WEIGHT	REEL LENGTH
	I.D.	O.D.	PSI	kg/mt	(mt)
E03W-012	12.7	23.1	200	0.43	213
E03W-020	19.1	31.8	200	0.74	213
E03W-025	25.4	39.0	200	0.81	100, 200



SINGLE WELD TWIN LINE OXY-ACC

For use on gas equipment in the construction industry.

Tube: SBR
Cover: Red & Blue Chloroprene
Temp: -20°C to 70°C

CODE	NOMINAL (mm)		W.P.	WEIGHT	GAS & COLOUR
	I.D.	O.D.	PSI	kg/mt	
E17OX-005	5.0	12.0	300	0.14	Oxy - Blue
E17AR-005	5.0	12.0	300	0.14	Argon - Black
E17AC-005	5.0	12.0	300	0.14	Acetylene - Red
E17LP-005	5.0	12.0	300	0.14	LPG - Orange
E17OX-010	10.0	17.0	300	0.25	Oxy - Blue
E17LP-010	10.0	17.0	300	0.25	LPG - Orange



FC332 HIGH TEMP PUSH LOCK

For use on 91 octane fuel, diesel and lubricating oils, air and water.

Tube: AQP
Cover: AQP
Temp: -40°C to 150°C

CODE	NOMINAL (mm)		W.P.	WEIGHT	REEL LENGTH
	I.D.	O.D.	PSI	kg/mt	(mt)
E13-006	6.4	12.5	250	0.12	100
E13-010	9.5	16.0	250	0.18	100
E13-012	12.7	19.0	250	0.22	100
E13-016	16.0	23.1	250	0.30	100
E13-020	19.0	26.4	250	0.42	100

OTHER SPECIALTY HOSES AVAILABLE ON REQUEST.

WRAPPED RUBBER HOSE

AIR/WATER DELIVERY 10 BAR

Medium duty delivery hose for air and water applications.

Tube: NR/NBR for oil resistance

Cover: NR/EPDM for ozone.
Black with green stripe

Temp: -20°C to 70°C

CODE	NOMINAL (mm)		W.P.	WEIGHT	COIL LENGTH
	I.D.	O.D.	PSI	kg/mt	(mt)
M04-020	19.0	27.0	150	0.50	20, 60
M04-025	25.4	33.0	150	0.61	20, 60
M04-032	31.7	42.0	150	0.85	20, 60
M04-038	38.1	48.0	150	0.99	20, 60
M04-050	50.8	61.0	150	1.39	20, 60
M04-063	63.5	75.5	150	1.60	20, 60
M04-075	76.2	87.0	150	2.40	20, 60
M04-100	102.0	115.0	150	3.10	20, 60
M04-114	114.0	127.0	150	4.20	20, 60
M04-150	152.0	165.0	150	5.00	20, 30
M04-200	204.0	214.0	150	7.00	20
M04-250	254.0	270.0	150	9.00	12
M04-300	305.0	323.0	150	13.20	12



AIR/WATER DELIVERY 20 BAR

Heavy duty delivery hose for air and water applications.

Tube: NR/NBR for oil resistance

Cover: NR/EPDM for ozone.
Black with blue stripe

Temp: -20°C to 70°C

CODE	NOMINAL (mm)		W.P.	WEIGHT	COIL LENGTH
	I.D.	O.D.	PSI	kg/mt	(mt)
M22-020	19.0	29.0	300	0.75	20, 60
M22-025	25.4	36.0	300	0.90	20, 60
M22-032	31.7	44.0	300	1.10	20, 60
M22-038	38.1	50.0	300	1.13	20, 60
M22-050	50.8	65.0	300	2.08	20, 60
M22-075	76.2	92.5	300	3.09	20, 60
M22-100	102.0	118.0	300	4.12	20, 60



WATER SUCTION 10 BAR

Suction and delivery of slurry, muddy water, drain water.

Tube: S.A.R. Rubber for abrasion

Cover: NR/EPDM for ozone.
Black with green stripe

Temp: -20°C to 70°C

CODE	NOMINAL (mm)		W.P.	WEIGHT	COIL LENGTH
	I.D.	O.D.	PSI	kg/mt	(mt)
M44-020	19.0	29.0	150	0.76	20, 60
M44-025	25.4	36.0	150	0.95	20, 60
M44-032	31.7	43.0	150	1.05	20, 60
M44-038	38.1	49.0	150	1.30	20, 60
M44-044	44.4	56.0	150	1.51	20, 40
M44-050	50.8	53.0	150	1.92	20, 60
M44-063	63.5	77.0	150	2.55	20, 60
M44-075	76.2	89.0	150	3.10	20, 60
M44-100	102.0	118.0	150	4.39	20, 60
M44-114	114.0	132.0	150	5.59	20
M44-125	127.0	146.0	150	6.98	20, 30
M44-150	152.0	170.0	150	8.99	20, 30
M44-200	203.0	223.0	150	13.61	20
M44-250	254.0	282.0	150	19.74	12
M44-300	305.0	335.0	150	24.41	12



OTHER SPECIALTY HOSES AVAILABLE ON REQUEST.



CORRUGATED WATER SUCTION

Suction and delivery of slurry, muddy water and drain water when extra flexibility is required.

Tube: SBR, weather resistant
Cover: SBR, weather resistant.
 Black
Temp: -20°C to 70°C

CODE	NOMINAL (mm)		W.P.	WEIGHT	COIL LENGTH
	I.D.	O.D.	PSI	kg/mt	(mt)
M45-075	76.2	89.0	100	3.11	3, 6
M45-100	102.0	118.0	100	3.58	3, 6
M45-150	152.0	170.0	100	9.00	3, 6
M45-200	203.0	223.0	100	13.10	3, 6
M45-250	254.0	282.0	100	20.68	3, 6
M45-300	305.0	335.0	100	24.59	3, 6



PETROL AND OIL SUCTION 10 BAR

For suction and delivery of oil and petroleum based products.

Tube: Nitrile, Oil Resistant
Cover: Nitrile, Oil Resistant.
 Black with red stripe
Temp: -20°C to 70°C

CODE	NOMINAL (mm)		W.P.	WEIGHT	COIL LENGTH
	I.D.	O.D.	PSI	kg/mt	(mt)
M28-020	19.0	30.0	150	0.72	20, 60
M28-025	25.4	35.0	150	0.84	20, 60
M28-032	31.7	43.0	150	0.99	20, 60
M28-038	38.1	49.5	150	1.16	20, 60
M28-044	44.4	57.0	150	1.35	20, 60
M28-050	50.8	63.0	150	1.48	20, 60
M28-057	57.2	71.0	150	1.80	20, 60
M28-063	63.5	78.0	150	2.45	20, 60
M28-075	76.2	89.0	150	2.60	20, 60
M28-090	90.0	106.0	150	3.45	20, 60
M28-100	102.0	119.0	150	4.15	20, 60
M28-114	114.0	132.5	150	6.17	20
M28-125	125.0	145.0	150	7.45	20
M28-150	152.0	175.0	150	11.38	20



PETROL AND OIL DELIVERY 10 BAR

For delivery of oil and petroleum based products.

Tube: Nitrile, Oil Resistant
Cover: Nitrile, Oil Resistant.
 Black with red stripe
Temp: -15°C to 100°C

CODE	NOMINAL (mm)		W.P.	WEIGHT	COIL LENGTH
	I.D.	O.D.	PSI	kg/mt	(mt)
M27-025	25.4	34.0	150	0.56	20, 60
M27-032	31.7	42.0	150	0.67	20, 60
M27-038	38.1	48.0	150	0.79	20, 60
M27-044	44.4	54.0	150	1.02	20, 60
M27-050	50.8	61.0	150	1.35	20, 60
M27-057	57.2	68.0	150	1.60	20, 60
M27-063	63.5	74.0	150	1.80	20, 60
M27-075	76.2	88.0	150	1.97	20, 60
M27-090	90.0	104.0	150	2.20	20, 60
M27-100	102.0	114.0	150	2.50	20, 60
M27-114	114.0	127.0	150	3.30	20
M27-125	125.0	141.0	150	3.78	20
M27-150	152.0	168.0	150	4.95	20

OTHER SPECIALTY HOSES AVAILABLE ON REQUEST.

MARINE EXHAUST

For exhaust applications on marine vessels. Also a great flexible option for unleaded fuels.

- Tube:** Nitrile, Oil Resistant
- Cover:** Synthetic, Oil Resistant.
Black with blue stripe
- Temp:** -20°C to 121°C

CODE	NOMINAL (mm)		W.P. PSI	WEIGHT kg/mt	COIL LENGTH (mt)
	I.D.	O.D.			
H23-020	19.0	-	75	0.42	20, 60
H23-022	22.0	-	75	0.46	20, 60
H23-025	25.4	-	75	0.52	20, 60
H23-028	28.6	-	75	0.59	20,60
H23-032	31.7	-	75	0.65	20, 60
H23-038	38.1	-	75	0.74	20, 60
H23-042	41.3	-	75	0.83	20,60
H23-045	44.4	-	75	0.86	20, 60
H23-050	50.8	-	75	1.06	20, 60
H23-057	57.2	-	75	1.20	20, 60
H23-060	60.0	-	75	1.23	20, 60
H23-063	63.5	-	75	1.30	20, 60
H23-070	69.9	-	75	1.42	20, 60
H23-075	76.2	-	75	1.46	20, 60
H23-090	90.0	-	75	1.71	20, 60
H23-100	102.0	-	75	2.05	20, 60
H23-114	114.0	-	75	2.33	20
H23-127	127.0	-	75	2.58	20
H23-152	152.0	-	75	3.18	20
H23-203	203.0	-	75	5.50	12
H23-254	254.0	-	75	7.67	12
H23-305	305.0	-	75	11.37	12



UHMWPE CHEMICAL

An extremely versatile chemical hose for most aggressive chemicals and solvents. This FDA Approved tube has an excellent resistance to most chemicals conveyed without contamination

- Tube:** Clear UHMW Polyethylene, F.D.A.
- Cover:** Smooth EPDM rubber.
Green with blue stripe
- Temp:** -20°C to 70°C

CODE	NOMINAL (mm)		W.P. PSI	WEIGHT kg/mt	COIL LENGTH (mt)
	I.D.	O.D.			
H10-020	19.0	32.0	150	0.90	20, 60
H10-025	25.0	37.0	150	0.95	20, 60
H10-032	32.0	46.0	150	1.35	20, 60
H10-038	38.0	50.5	150	1.50	20, 60
H10-050	51.0	64.0	150	1.91	20, 60
H10-063	63.5	77.5	150	2.58	20, 60
H10-075	76.0	90.0	150	3.61	20, 60
H10-100	102.0	120.0	150	4.98	20, 60



STEAM HOSE

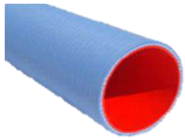
High pressure wire reinforced steam hose designed for use with super heated steam.

- Tube:** Black Smooth EPDM Rubber
- Cover:** Smooth EPDM Rubber.
Red
- Temp:** -40°C to 210°C

CODE	NOMINAL (mm)		W.P. PSI	WEIGHT kg/mt	COIL LENGTH (mt)
	I.D.	O.D.			
H06-012	13.0	25.0	250	0.53	120
H06-020	19.0	31.0	250	0.68	120
H06-025	25.0	38.0	250	0.90	120
H06-032	32.0	45.5	250	1.30	60
H06-038	38.0	54.0	250	1.60	60
H06-050	51.0	67.0	250	2.20	60
H06-063	63.5	81.5	250	3.80	60



SILICONE HOSE



SILICONE RADIATOR

Used for heavy duty connections in engines where extreme temperature ranges are present.

Tube: Silicone Rubber
Cover: Blue Silicone Rubber
Temp: -54°C to 177°C

CODE	I.D.	BURST	WEIGHT	LENGTH
	(mm)	PSI	kg/mt	(mt)
K01-012	12	500	0.24	1
K01-016	16	485	0.30	1
K01-020	20	475	0.36	1
K01-022	22	465	0.42	1
K01-025	25	450	0.48	1
K01-028	28	435	0.54	1
K01-032	32	425	0.60	1
K01-035	35	400	0.65	1
K01-038	38	375	0.71	1
K01-041	40	350	0.77	1
K01-044	45	300	0.83	1
K01-048	48	250	0.89	1
K01-050	51	250	0.95	1
K01-054	54	235	1.01	1
K01-057	58	225	1.07	1
K01-060	60	210	1.13	1
K01-063	63	200	1.19	1
K01-067	65	200	1.25	1
K01-070	70	200	1.31	1
K01-076	76	200	1.43	1
K01-083	83	175	1.55	1
K01-088	90	150	1.67	1
K01-095	95	135	1.79	1
K01-100	102	125	1.90	1
K01-112	114	100	2.14	1
K01-125	127	90	2.38	1
K01-150	152	80	2.50	1



SILICONE HEATER HOSE

Used for heavy duty connections in engines where extreme temperature ranges are present. Resistant to coolant additives.

Tube: Silicone Rubber
Cover: Blue Silicone Rubber
Temp: -54°C to 177°C

CODE	I.D.	BURST	WEIGHT	LENGTH
	(mm)	PSI	kg/mt	(mt)
K02-006	6	320	-	15
K02-008	8	310	-	15
K02-010	10	310	-	15
K02-012	12	310	-	15
K02-016	16	300	-	15
K02-020	20	300	-	15
K02-025	25	250	-	15

OTHER SILICONE PARTS INCLUDING JOINERS AND ELBOWS AVAILABLE ON REQUEST.

SILICONE ELBOWS



Available in 90° & 45°

Tube: Silicone Rubber
Cover: Blue Silicone Rubber
Temp: -54°C to 177°C

I.D. (mm)	O.D. (mm)	LENGTH (mm)	90° ELBOW	45° ELBOW
13	22	150.00	K07-013	-
16	27	150.00	K07-016	-
19	30	150.00	K07-020	-
25	36	150.00	K07-025	K08-025
32	42	150.00	K07-032	K08-032
38	47	150.00	K07-038	K08-3847
44	54	150.00	K07-044	K08-044
		178-229	K07L-044	-
51	62	150.00	K07-050	K08-050
		254-254	K07L-050	-
57	68	150.00	K07-057	K08-057
		305-305	K07L-057	-
63	74	150.00	K07-063	K08-063
		152-254	K07L-063	-
70	80	150.00	K07-070	K08-070
76	86	150.00	K07-075	K08-075
		178-254	K07L-075	-
89	100	150.00	K07-090	K08-090
102	110	150.00	K07-094	K08-094

RUBBER RADIATOR / FUEL FILLER HOSE BENDS (20psi)



I.D. (mm)	90°		45°	
	LENGTH	CODE	LENGTH	CODE
38	383	H15-90-038	404	H15-45-038
44	381	H15-90-044	404	H15-45-044
51	378	H15-90-051	404	H15-45-051
57	373	H15-90-057	404	H15-45-057
63	371	H15-90-063	401	H15-45-063

OTHER SILICONE PARTS INCLUDING JOINERS AND ELBOWS AVAILABLE ON REQUEST.

RADIATOR HOSE



RUBBER RADIATOR

Recommended for the transfer of hot water and anti freeze etc. in cooling systems.

Tube: EPDM Rubber
Cover: EPDM Rubber.
 Black with green stripe
Temp: -40°C to 100°C

CODE	NOMINAL (mm)		W.P. PSI	WEIGHT kg/mt	LENGTH (mt)
	I.D.	O.D.			
H15-013	12.0	20.0	45	0.18	1
H15-016	16.0	23.0	45	0.25	1
H15-019	19.0	27.0	45	0.33	1
H15-022	22.0	29.0	45	0.34	1
H15-025	25.0	32.0	45	0.47	1
H15-028	28.0	35.0	45	0.46	1
H15-030	30.0	38.0	45	0.49	1
H15-032	32.0	40.0	45	0.52	1
H15-035	35.0	43.0	45	0.57	1
H15-038	38.0	47.0	45	0.61	1
H15-040	40.0	49.0	45	0.78	1
H15-042	42.0	51.0	45	0.82	1
H15-045	45.0	55.0	45	0.83	1
H15-048	48.0	58.0	45	1.05	1
H15-051	51.0	61.0	45	1.11	1
H15-055	55.0	65.0	45	1.19	1
H15-058	58.0	68.0	45	1.26	1
H15-060	60.0	70.0	45	1.29	1
H15-063	63.0	73.0	45	1.33	1
H15-065	65.0	75.0	45	1.58	1
H15-070	70.0	80.0	45	1.50	1
H15-073	73.0	83.0	45	1.60	1
H15-076	76.0	86.0	45	1.62	1
H15-080	80.0	92.5	45	1.76	1
H15-083	83.0	93.0	45	1.67	1
H15-090	90.0	102.5	45	2.41	1
H15-102	102.0	112.0	45	2.14	1
H15-114	114.0	126.5	45	3.40	1
H15-127	127.0	138.0	45	3.01	1
H15-140	140.0	153.0	45	3.71	1
H15-152	152.0	166.0	45	4.43	1



EPDM INSERTS

These inserts are a great way of increasing or decreasing the internal diameter of a radiator hose when the internal diameter of each end do not match.

CODE	NOMINAL (mm)	
	I.D.	O.D.
H15I-5038	38.0	51.0
H15I-5045	44.0	51.0
H15I-6350	51.0	63.0
H15I-6357	57.0	63.0
H15I-7550	51.0	76.0
H15I-7557	57.0	76.0
H15I-7563	63.0	76.0
H15I-7570	70.0	76.0
H15I-9075	76.0	90.0
H15I-9475	76.0	102.0

CODE	NOMINAL (mm)	
	I.D.	O.D.
H15I-9480	80.0	102.0
H15I-9490	89.0	102.0
H15I-114094	102.0	114.0
H15I-127102	102.0	127.0
H15I-127114	114.0	127.0
H15I-140127	127.0	140.0
H15I-152127	127.0	152.0
H15I-152140	140.0	152.0
H15I-178152	152.0	178.0
H15I-203178	178.0	203.0

DUCTING

EOLO PU ANTI STATIC

- Colour:** Clear transparent with white spiral, anti-static wire externally
- Temp:** -20°C to 80°C
- Features:** PU hose reinforced with anti-shock rigid PVC spiral. Outside surface is corrugated, with smooth inside surface. Light and flexible hose with a high resistance against abrasion and bending. Weather resistant and suitable for most chemicals.
- App:** Suction and discharge of abrasive powders, fumes, shavings etc for heavy duty industrial and abrasive applications.

CODE	I.D. (mm)	BEND RADIUS	WEIGHT (g/mt)	LENGTH
				(mt)
J11-032	32	35	230	20
J11-038	38	50	250	20
J11-050	50	70	360	20
J11-063	63	80	540	20
J11-076	76	100	630	30
J11-090	90	125	750	30
J11-100	100	140	830	30
J11-125	125	170	1150	30
J11-150	150	200	1610	20
J11-200	200	260	2320	20
J11-250	250	300	3450	20
J11-300	300	350	4100	20



EOLO PU

- Colour:** Clear transparent with white spiral
- Temp:** -20°C to 80°C
- Features:** PU hose reinforced with anti-shock rigid PVC spiral. Outside surface is corrugated, with smooth inside surface. Light and flexible hose, with a high resistance against abrasion and bending. Weather resistant and suitable for most chemicals.
- App:** Suction and discharge of abrasive powders, fumes, shavings etc for heavy duty industrial and abrasive applications.

CODE	I.D. (mm)	BEND RADIUS	WEIGHT (g/mt)	LENGTH
				(mt)
J14-032	32	35	180	20
J14-038	38	50	220	20
J14-050	50	70	310	20
J14-063	63	80	510	20
J14-076	76	100	600	30
J14-090	90	125	750	30
J14-100	100	140	830	30
J14-150	150	200	1500	20
J14-160	160	220	1940	20
J14-200	200	260	2300	20



VOLCANO PUR

- Colour:** Clear with copper plated steel wire
- Temp:** -40°C to 90°C
- Features:** Polyurethane ducting with coppered steel wire. Very flexible and light featuring high abrasion resistance and flexibility. Weather resistance and suitable for most chemicals.
- App:** Suction and discharge of abrasive powders, fumes, shavings etc. Used when flexibility is required.

CODE	I.D. (mm)	BEND RADIUS	WEIGHT (g/mt)	LENGTH
				(mt)
J18-050	51	40	250	20
J18-075	76	65	510	20
J18-100	102	85	650	15
J18-125	127	102	850	15
J18-150	152	125	1040	15
J18-200	203	165	1650	15





EOLO TR (FLAME RETARDANT)

Colour: Grey
Temp: -20°C to 100°C
Features: Flexible flame resistant ducting made from a textile fabric with PVC coating, reinforced with a steel helix welded between the two fabric layers.
App: Civil and naval conditioning plants, ventilation systems, suction of fumes, smokes, gases and powders.

CODE	I.D. (mm)	BEND RADIUS	WEIGHT (g/mt)	LENGTH (mt)
J13-076	76	38	180	10
J13-090	90	45	220	10
J13-100	102	51	280	10
J13-125	127	64	340	10
J13-140	140	70	380	10
J13-150	152	76	410	10
J13-160	160	80	450	10
J13-180	180	90	500	10
J13-200	203	102	570	10
J13-225	228	114	640	10
J13-250	254	127	800	10
J13-300	305	153	960	10



TPR

Colour: Black
Temp: -50°C to 100°C
Features: Thermoplastic rubber with wire helix reinforcement. Good abrasive qualities and U.V. resistance.
App: General purpose ducting for use over a variety of temperatures.

CODE	I.D. (mm)	BEND RADIUS	WEIGHT (g/mt)	LENGTH (mt)
J16-038	38	80	-	10
J16-050	51	102	-	10
J16-063	63	126	-	10
J16-075	76	152	-	10
J16-090	89	178	-	10
J16-100	102	204	-	10
J16-114	114	228	-	10
J16-125	127	254	-	10
J16-150	152	304	-	10
J16-175	178	356	-	10
J16-200	203	406	-	10
J16-225	229	458	-	10
J16-250	254	508	-	10
J16-300	305	610	-	10

*AVAILABLE UP TO 610mm DIAMETER



FLEX LOK NEOPRENE

Colour: Black
Temp: -53°C to 120°C
Features: Neoprene coated polyester fabric hose. Extremely flexible, resistant to external abrasion and easily compressible.
App: Used in fume control.

CODE	I.D. (mm)	BEND RADIUS	WEIGHT (g/mt)	LENGTH (mt)
J64-050	51	51	372	3.6
J64-063	64	58	447	3.6
J64-075	76	64	491	3.6
J64-100	102	76	714	3.6
J64-114	114	81	804	3.6
J64-125	127	89	878	3.6
J64-150	152	102	923	3.6

HEAVY DUTY TPR T7 YELLOW

Colour: Black with yellow stripe
Temp: -40°C to 135°C
Features: This American made ducting is suitable for a wide range of temperatures and chemicals. Resistant to ozone, UV, oils and some chemicals. Very flexible and durable ducting with a highly visible wear stripe
App: Dust control and light bulk material handling.

CODE	I.D. (mm)	BEND RADIUS	WEIGHT (g/mt)	LENGTH (mt)
J50-050	52	41	372	15.2
J50-057	57	51	447	15.2
J50-063	63	61	521	15.2
J50-075	76	64	595	15.2
J50-090	89	76	744	15.2
J50-100	102	81	997	15.2
J50-114	114	91	1191	15.2
J50-125	127	99	1265	15.2
J50-140	140	104	1191	15.2
J50-150	152	109	1220	15.2
J50-180	178	127	1488	7.6
J50-200	203	147	1786	7.6
J50-230	229	163	2381	7.6
J50-250	254	175	3274	7.6
J50-300	305	208	4018	7.6
J50-350	356	241	4465	7.6
J50-400	406	279	5209	7.6
J50-450	457	305	5804	7.6
J50-500	508	343	6399	7.6
J50-550	559	381	6548	7.6
J50-600	610	406	7143	7.6



FLEX LOK SF

Colour: Silver
Temp: -53°C to 286°C
Features: Silicon coated fiberglass fabric hose. Extremely flexible, resistant to external abrasion and easily compressible.
App: Used in fume control.

CODE	I.D. (mm)	BEND RADIUS	WEIGHT (g/mt)	LENGTH (mt)
J61-075	76	89	774	7.6
J61-100	102	83	685	7.6
J61-125	127	104	848	7.6
J61-150	152	115	893	7.6
J61-180	178	134	923	7.6
J61-200	203	154	1191	7.6
J61-230	229	173	1265	7.6
J61-250	254	192	1473	7.6
J61-300	305	229	1756	7.6



FLEXAUST CWGS

Colour: Red
Temp: -55°C to 290°C
Features: Lightweight, flexible hose reinforced with a spring steel wire helix for crush resistance.
App: For industrial air movement and fume applications.

CODE	I.D. (mm)	BEND RADIUS	WEIGHT (g/mt)	LENGTH (mt)
J62-075	76	89	774	7.6
J62-100	102	93	685	7.6
J62-125	127	104	848	7.6
J62-150	152	115	893	7.6
J62-180	178	134	923	7.6
J62-200	203	154	1191	7.6
J62-230	229	173	1265	7.6
J62-250	254	192	1473	7.6
J62-300	305	229	1756	7.6

