

## 2. FLECK

### FLECK 4600 - FOR HOT WATER APPLICATIONS



| Reference   | Config.    | Description   | € |
|---|------------|---|---|
| <b>Fleck 4600 - 230V / 50Hz - Bronze valve body</b>                                     |            |   |   |
| 0301460001  | C7D-HW-LW  | Fleck 4600/1600 - CHRONO 7 days - Hot water 82°C        |   |
| 0301460001  | C12D-HW-LW | Fleck 4600/1600 - CHRONO 12 days - Hot water 82°C       |   |
| 0301460001  | E8D-HW-LW  | Fleck 4600/1600 - ECO 8 m <sup>3</sup> - Hot water 65°C |   |
| <b>Fleck 4600SXT Electronic - 24V (With transformer 230V - 24V) - Bronze valve body</b> |            |   |   |
| 0301460107  | CSXD-HW    | Fleck 4600/1600 - CHRONO - SXT Timer - Hot water 82 °C  |   |

The price of the KIT Fleck # 10 is no longer included in the price of the valve  
If you do not need the KIT, please specify this on your order

| Reference                | Code           | Description   | € |
|--------------------------|----------------|---|---|
| Kit for Fleck 4600 valve |                |   |   |
| 0401998408               | Fleck Kit # 10 | Kit for Fleck 4600 hot water valve:<br>Riser tube 1" With Bottom distributor - hot water (106cm)<br>Air Check 500 hot water |   |

| Reference          | Description                                  | € |
|--------------------|--|---|
| <b>Spare parts</b> |  |   |
| 0401297642         | Top distributor 1" - hot water               |   |
| 0401191345         | Powerhead 4600/5600 12 days                  |   |
| 0401197362         | Powerhead 4600/5600 7 days                   |   |
| 0401197360         | Powerhead 4600/5600 eco 8m <sup>3</sup>      |   |
| 0401190001         | Powerhead 4600/5600 SXT                      |   |
| 0401237523         | Seals and spacers kit 4600 - hot water       |   |
| 0401187251         | Piston 4600 SXT                              |   |
| 0401177182         | Timer motor 230V/50Hz 1/30 Rpm               |   |
| 0401177160         | Motor SXT timer 24V/50Hz 2 Rpm               |   |
| 0401046558         | Brine valve 1600                             |   |
| 0401056580         | Eco By-Pass Assy 8 M3 & Red Handle Hot Water |   |

## 2. FLECK

### FLECK 5600



| Reference  | Config.      | Description  | € |
|--|--------------|--|---|
| <b>Fleck 5600 - 230V / 50Hz - Noryl valve body</b> |              |  |   |
| 0301566018   | C7D-LW       | Fleck 5600/1600 - CHRONO 7 days                            |   |
| 0301566018   | C12D-LW      | Fleck 5600/1600 - CHRONO 12 days                           |   |
| 0301566018   | C12D-FR      | Fleck 5600/1600 - CHRONO - Fast regeneration               |   |
| 0301566018   | E8D          | Fleck 5600/1600 - ECO 8 m3                                 |   |
| 0301566018   | E8D-FR       | Fleck 5600/1600 - ECO 8 m <sup>3</sup> - Fast regeneration |   |
| 0301566018   | E40D         | Fleck 5600/1600 - ECO 40 m3                                |   |
| 0301563094   | FIL          | Fleck 5600/1600 - Filter                                   |   |
|  | 24 V / 50 Hz | With Transformer 230-24V / 50/60 Hz 10 VA                  |   |

The price of the KIT Fleck # 1 is no longer included in the price of the valve  
If you do not need the KIT, please specify this on your order

### FLECK 5600 SXT



| Refer-ence  | Config.    | Description                                | € |
|---|------------|--|---|
| <b>Fleck 5600SXT Electronic - 24V/Hz (With transformer 230V - 24V) - Noryl valve body</b> |            |  |   |
| 0301561549  | CSXD       | Fleck 5600/1600 - CHRONO - SXT Timer       |   |
| 0301561549  | ESXD       | Fleck 5600/1600 - ECO - SXT Timer          |   |
| 0301561549  | ESXU       | Fleck 5600/1600 - ECO - SXT Timer - Upflow |   |
| 0301563094  | FIL-SXT-CH | Fleck 5600/1600 - Filter - SXT Timer       |   |

The price of the KIT Fleck # 1 is no longer included in the price of the valve  
If you do not need the KIT, please specify this on your order

| Reference                    | Code          | Description   | € |
|------------------------------|---------------|---|---|
| Kit for Fleck 5600 SXT valve |               |   |   |
| 0401998246                   | Fleck Kit # 1 | Kit for Fleck 5600 SXT valve:<br>Riser tube 1" With Bottom distributor (140cm)<br>Air Check 500A 915 Mm (36") |   |

Please consult the Spare Parts Catalogue for spare parts prices

## 2. FLECK

### FLECK 5000 SXT



| Reference  | Config. | Description                                | € |
|--|---------|--|---|
| <b>Fleck 5000SXT Electronic - 24V/50 Hz (With transformer 230V - 24V) - Noryl valve body</b> |         |  |   |
| 0301500095   | CSXD    | Fleck 5000/1600 - CHRONO - SXT Timer       |   |
| 0301500095   | ESXD    | Fleck 5000/1600 - ECO - SXT Timer          |   |
| 0301500095   | ESXU    | Fleck 5000/1600 - ECO - SXT Timer - Upflow |   |
| 0301505665   | SXT-FIL | Fleck 5000/1600 - Filter                   |   |

The price of the KIT Fleck # 1 is no longer included in the price of the valve  
If you do not need the KIT, please specify this on your order

High Backwash flow  
-> ideal for small filter applications

| Reference                          | Code          | Description                                   | € |
|------------------------------------|---------------|---|---|
| <b>Kit for Fleck 5000SXT valve</b> |               |   |   |
| 0401998246                         | Fleck Kit # 1 | Kit for Fleck 5000SXT valve                   |   |
|                                    |               | Riser tube 1" With Bottom distributor (140cm) |   |
|                                    |               | Air Check 500A 915 Mm (36")                   |   |

| Reference          | Description                    | € |
|--------------------|--------------------------------|---|
| <b>Spare parts</b> |                                |   |
| 0401297640         | Top distributor 1"             |   |
| 0401136188         | Transformer 230V/24V           |   |
| 0401327895         | O-ring top of tank             |   |
| 0401237527         | Seals and spacers kit 5000     |   |
| 0401187234         | Piston 5000                    |   |
| 0401177191         | Timer motor 24V 50/60Hz 2 RPM  |   |
| 0401126795         | Injector 1600 5000/5800 n° 0   |   |
| 0401126796         | Injector 1600 5000/5800 n° 00  |   |
| 0401126797         | Injector 1600 5000/5800 n° 000 |   |
| 0401126799         | Injector 1600 5000/5800 n° 1   |   |
| 0401126800         | Injector 1600 5000/5800 n° 2   |   |
| 0401126801         | Injector 1600 5000/5800 n° 3   |   |
| 0401046558         | Brine valve 1600               |   |
| 0401157054         | Meter 3/4" 5000 SXT            |   |

2. FLECK

# Fleck 5800

- » Versatile electronic package
- » Intelligent technology, with optical sensor
- » High service rate (20 gpm continuous)
- » One valve body for upflow and downflow version
- » Seal and spacer cartridge for easy servicing
- » Fast positioning reversible 10.000 RPM 12V DC drive motor
- » Brine tank filled with soft water
- » Confirm backup (up to 12 hours after power interruption)



Storm = LXT = Programming / electronic based on Autotrol Logix  
 Typhoon = SXT = Programming / electronic based on Fleck SXT



| Valve   | 5600     | 5600SXT  | 5000     | 5800     |
|---|----------|----------|----------|----------|
| Flow valve (50 psi inlet pressure)                |          |          |          |          |
| Continuous (gpm @15 psi pressure drop)            | 20       | 20       | 20       | 20       |
| Peak (gpm @ 25 psi pressure drop)                 | 26       | 26       | 27       | 27       |
| Cv service (gpm @ 1 psi pressure drop)            | 5.2      | 5.2      | 5.4      | 5.4      |
| Max. backwash flow (gpm @ 25 psi pressure drop)   | 7        | 7        | 17       | 17       |
| Classical applications                            |          |          |          |          |
| Recommended range of vessel Diameterfor softeners | 6" - 12" | 6" - 12" | 6" - 16" | 6" - 16" |
| Recommended range of vessel Diameterfor filters   | 6" - 10" | 6" - 10" | 6" - 16" | 6" - 16" |
| Regeneration capacity (cu. Ft.)                   | 2        | 2        | 4        | 4        |
| Controllers                                       |          |          |          |          |
| 3200 electromechanical                            | •        |          |          |          |
| Storm (LXT)                                       |          |          |          | •        |
| SXT/Typhoon (SXT2)                                |          | •        | •        | •        |
| Options   |          |          |          |          |
| Double backwash                                   | •        | •        |          | •        |
| Upflow regeneration available                     | •        | •        | •        | •        |

## 2. FLECK

### FLECK 5800



| Reference  | Config. | Description   | € |
|--|---------|---|---|
| <b>Fleck 5800 Typhoon - 12V - Noryl valve body</b> |         |   |   |
| 0301580003   | ESXD    | Fleck 5800/1600 - ECO - Typhoon SXT2 Timer          |   |
| 0301580003   | ESXU    | Fleck 5800/1600 - ECO - Typhoon SXT2 Timer - Upflow |   |
| 0301580004   | FSXT    | Fleck 5800/1600 - Filter                            |   |

|  |      |  |  |
|--|------|--|--|
| <b>Fleck 5800 Storm - 12V - Noryl valve body</b> |      |  |  |
| 0301580002                                       | ELXD | Fleck 5800/1600 - ECO - Storm LXT Timer          |  |
| 0301580002                                       | ELXU | Fleck 5800/1600 - ECO - Storm LXT Timer - Upflow |  |
| 0301580004                                       | FLXT | Fleck 5800/1600 - Filter                         |  |

The price of the KIT Fleck # 1 is no longer included in the price of the valve  
If you do not need the KIT, please specify this on your order

| Reference                       | Code          | Description                                   | € |
|---------------------------------|---------------|---|---|
| <b>Kit for Fleck 5800 valve</b> |               |   |   |
| 0401998246                      | Fleck Kit # 1 | Kit for Fleck 5800 valve                      |   |
|                                 |               | Riser tube 1" With Bottom distributor (140cm) |   |
|                                 |               | Air Check 500A 915 Mm (36")                   |   |

| Reference          | Code       | Description                              | € |
|--------------------|------------|--|---|
| <b>Spare parts</b> |            |  |   |
| 0401297640         |            | Top distributor 1"                       |   |
| 0401280001         | BR43318    | Transformer                              |   |
| 0401270003         | BR61834    | Powerhead 5800 Typhoon SXT2              |   |
| 0401270004         | BR61833-01 | Powerhead 5800 Storm LXT chrono downflow |   |
| 0401270005         | BR61833-02 | Powerhead 5800 Storm LXT eco downflow    |   |
| 0401270006         | BR61833-03 | Powerhead 5800 Storm LXT chrono upflow   |   |
| 0401270007         | BR61833-04 | Powerhead 5800 Storm LXT eco upflow      |   |
| 0401327895         |            | O-ring top of tank                       |   |
| 0401180004         | BR61837    | Seals and spacers 5800 downflow          |   |
| 0401180006         | BR61838    | Seals and spacers 5800 upflow            |   |
| 0401170003         | BR61835    | Motor 5800                               |   |
| 0401126795         |            | Injector 1600 5000/5800 n° 0             |   |
| 0401126796         |            | Injector 1600 5000/5800 n° 00            |   |
| 0401126797         |            | Injector 1600 5000/5800 n° 000           |   |
| 0401126799         |            | Injector 1600 5000/5800 n° 1             |   |
| 0401126800         |            | Injector 1600 5000/5800 n° 2             |   |
| 0401126801         |            | Injector 1600 5000/5800 n° 3             |   |
| 0401157054         |            | Meter 3/4" 4600/5600SXT/5800             |   |

## 2. FLECK

### FLECK 6600



| Reference  | Config. | Description   |
|--|---------|---|
| <b>Fleck 6600 Electronic - 24V/Hz (With transformer 230V - 24V) - Noryl valve body</b> |         |   |
| 0301666055   | ED      | Fleck 6600/1600 - ECO                                   |
| 0301666055   | EU-VB   | Fleck 6600/1600 - ECO - Upflow and Proportional brining |

€

### FLECK 6700



| Reference  | Config. | Description   |
|--|---------|---|
| <b>Fleck 6700ET Electronic - 24V/50Hz (With transformer 230V - 24V) - Noryl valve body</b> |         |   |
| 0301676064   | ED      | Fleck 6700/1600 - ECO                                   |
| 0301676064   | EU-VB   | Fleck 6700/1600 - ECO - Upflow and Proportional brining |

€

The price of the KIT Fleck # 1 is no longer included in the price of the valve  
If you do not need the KIT, please specify this on your order

| Reference                         | Code          | Description                                   |
|-----------------------------------|---------------|---|
| Kit for Fleck 6600 and 6700 valve |               |   |
| 0401998246                        | Fleck Kit # 1 | Kit for Fleck 6600 et 6700 valve              |
|                                   |               | Riser tube 1" With Bottom distributor (140cm) |
|                                   |               | Air Check 500A 915 Mm (36")                   |

€

| Reference          | Description   |
|--------------------|---|
| <b>Spare parts</b> |   |
| 0401297640         | Top distributor 1"                                  |
| 0401136188         | Transformer 230V/24V                                |
| 0401197392         | Powerhead 6600 eco downflow                         |
| 0401197393         | Powerhead 6600 eco upflow                           |
| 0401197364         | Powerhead 6700 eco downflow                         |
| 0401197365         | Powerhead 6700 eco upflow                           |
| 0401197399         | Powerhead 6700 eco upflow with proportional brining |
| 0401327853         | O-ring top of tank                                  |
| 0401237518         | Seals and spacers kit 6600 & 6700                   |
| 0401187251         | Piston 6600 & 6700 downflow                         |
| 0401187232         | Piston 6600 & 6700 upflow                           |
| 0401177160         | Timer motor 24V/50Hz 2 Rpm                          |
| 0401120003         | Injector 1600 6600 downflow                         |
| 0401126793         | Injector 1600 6600 upflow                           |
| 0401046558         | Brine valve 1600                                    |
| 0401157041         | Meter 3/4" electronic without cable                 |

€

## 2. FLECK

### FLECK 7700 1" OF 1"1/4



| Reference   | Config. | Description  | € |
|---|---------|--|---|
| <b>Fleck 7700 Standard Electronic 1" - 24 V (With transformer 230V - 24V)</b>     |         |  |   |
| 0301700120  | STD     | Fleck 7700 SXT - CHRONO  |   |
| 0301700120  | IM-STD  | Fleck 7700 SXT - ECO   |   |
| 0401354617  | 28354   | 1" Connections for BP 7700 (Unit Price - to order by 2 pieces)       |   |
| 0401354624  | 28356   | Bypass for Fleck 7700 with clips (without Connections)               |   |
| <b>Fleck 7700 High Flow Electronic 1"1/4 - 24 V (With transformer 230V - 24V)</b> |         |  |   |
| 0301700120  | HF      | Fleck 7700 SXT - CHRONO - High flow                                  |   |
| 0301700120  | IM-HF   | Fleck 7700 SXT - ECO - High flow                                     |   |
| 0401354621  | 28355   | 5/4" Connections for Bypass 7700 (Unit Price - to order by 2 pieces) |   |
| 0401354624  | 28356   | Bypass for Fleck 7700 with clips (without Connections)               |   |

Standard = up to 6 m<sup>3</sup>/h - Riser tube 1"

High flow = up to 8 m<sup>3</sup>/h - Riser tube 32 mm

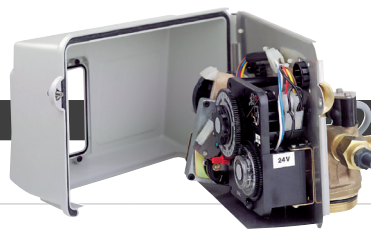
The price of the KIT Fleck # 2 or # 3, is no longer included in the price of the valve  
If you do not need the KIT, please specify this on your order

| Reference   | Code          | Description   |
|---|---------------|---|
| <b>Kit for Fleck 7700 Standard (# 2) and Fleck 7700 High Flow (# 3) valve</b> |               |   |
| 0401998247  | Fleck Kit # 2 | Distributor 1" + tube 55" (140cm)<br>Air Check 500A 915 Mm (36")<br>Drain Fitting Elbow (3/4" Hose Barbed)    |
| 0401998248  | Fleck Kit # 3 | Bottom distributor 32mm<br>Air Check 500A 915 Mm (36")<br>Drain Fitting Elbow (3/4" Hose Barbed)<br>Tube 32mm |

Please consult the Spare Parts Catalogue for spare parts prices

## 2. FLECK

### FLECK 2750 1"



| Reference  | Config.                    | Description   | € |
|--|----------------------------|---|---|
| <b>Fleck 2750/1650 1" - 24 V (With transformer 230V - 24V)</b> |                            |   |   |
| 0301272913   | C12D                       | Fleck 2750/1650 - CHRONO                                      |   |
| 0301272913   | E8D                        | Fleck 2750/1650 - ECO 3/4" - 8m <sup>3</sup>                  |   |
| 0301272913   | E40D                       | Fleck 2750/1650 - ECO 3/4" - 40m <sup>3</sup>                 |   |
| 0301272913   | E20D                       | Fleck 2750/1650 - ECO 4/4" - 20m <sup>3</sup>                 |   |
| 0301272913   | E100D                      | Fleck 2750/1650 - ECO 4/4" - 100m <sup>3</sup>                |   |
| 0301270097   | CSXTD                      | Fleck 2750/1650 - CHRONO - SXT Timer                          |   |
| 0301270097   | ESXTD                      | Fleck 2750/1650 - ECO 4/4" - SXT Timer                        |   |
| 0301278450   | CNXTD                      | Fleck 2750/1650 - CHRONO - NXT Timer                          |   |
| 0301272913   | LESS TIMER                 | Fleck 2750/1650 - CHRONO - without Timer                      |   |
| 0301272913   | LESS TIMER<br>LESS TRANSFO | Fleck 2750/1650 - CHRONO - without timer, without transformer |   |

|  |                            |   |  |
|--|----------------------------|---|--|
| <b>Fleck 2750/1710 1" - 24 V (With transformer 230V - 24V)</b> |                            |   |  |
| 0301276111   | C12D                       | Fleck 2750/1710 - CHRONO                                      |  |
| 0301276111   | E20D                       | Fleck 2750/1710 - ECO 4/4" - 20m <sup>3</sup>                 |  |
| 0301276111   | E100D                      | Fleck 2750/1710 - ECO 4/4" - 100m <sup>3</sup>                |  |
| 0301270098   | CSXTD                      | Fleck 2750/1710 - CHRONO - SXT Timer                          |  |
| 0301270098   | ESXTD                      | Fleck 2750/1710 - ECO 4/4" - SXT Timer                        |  |
| 0301278451   | CNXTD                      | Fleck 2750/1710 - CHRONO - NXT Timer                          |  |
| 0301276111   | LESS TIMER                 | Fleck 2750/1710 - CHRONO - without Timer                      |  |
| 0301276111   | LESS TIMER<br>LESS TRANSFO | Fleck 2750/1710 - CHRONO - without timer, without transformer |  |

|  |        |                             |  |
|--|--------|-----------------------------|--|
| <b>Fleck 2750 Filter 1" - 24 V (With transformer 230V - 24V)</b> |        |                             |  |
| 0301276108   | FIL12D | Fleck 2750 Filter - 12 days |  |
| 0301276108   | FILSXD | Fleck 2750 Filter - SXT     |  |

| Options    |                        |  |                     |
|------------|------------------------|--|---------------------|
|            | 2750 DLFC              | Additional cost DLFC 1" - 8 tot 25 GPM                     |                     |
|            | NBP                    | Additional cost NBP Piston (no bypass)                     |                     |
|            | HW                     | Additional cost for chrono hot water valve ( 82°C)         |                     |
|            | EHW                    | Additional cost for eco hot water valve ( 65°C)            |                     |
|            |                        | Hot water not available in SXT, NXT or ET                  |                     |
|            | UF                     | Additional cost Upflow                                     | no longer available |
| 0401356288 | EXTERNE FLECK<br>Meter | External Fleck meter 1"<br>Available with chrono NXT valve |                     |

The price of the KIT Fleck # 1 of # 4 is no longer included in the price of the valve  
If you do not need the KIT, please specify this on your order

| Reference  | Code          | Description  |
|--|---------------|--|
| <b>Kit for Fleck 2750/1650 (# 1) and Fleck 2750/1710 (# 4) valve</b> |               |  |
| 0401998246   | Fleck Kit # 1 | Distributor 1" + tube 55" (140cm)<br>Air Check 500A 915 Mm (36") |
| 0401998249   | Fleck Kit # 4 | Distributor 1" + tube 75" (191cm)<br>Air Check 900               |

The Fleck 2750, 2850 and 2910 valve are delivered with an auxiliary microswitch  
The Fleck 2750, 2850 and 9500 valves are delivered with brine valve 1650 instead of 1600 (except for the hot water valves)



## 2. FLECK

### FLECK 2850 1" 1/2



| Reference   | Config.                    | Description   | € |
|---|----------------------------|---|---|
| <b>Fleck 2850/1650 Top 1"1/2 - 24 V (With transformer 230V - 24V)</b> |                            |   |   |
| 0301286340  | C12D                       | Fleck 2850/1650 - CHRONO                                      |   |
| 0301286340  | E40D                       | Fleck 2850/1650 - ECO 6/4" - 40m <sup>3</sup>                 |   |
| 0301286340  | E200D                      | Fleck 2850/1650 - ECO 6/4" - 200m <sup>3</sup>                |   |
| 0301280100  | CSXTD                      | Fleck 2850/1650 - CHRONO - SXT Timer                          |   |
| 0301280100  | ESXTD                      | Fleck 2850/1650 - ECO 6/4" - SXT Timer                        |   |
| 0301288454  | CNXTD                      | Fleck 2850/1650 - CHRONO - NXT Timer                          |   |
| 0301286340  | LESS TIMER                 | Fleck 2850/1650 - CHRONO - without timer                      |   |
| 0301286340  | LESS TIMER<br>LESS TRANSFO | Fleck 2850/1650 - CHRONO - without timer, without transformer |   |

|   |                            |  |  |
|---|----------------------------|--|--|
| <b>Fleck 2850/1710 Top 1"1/2 - 24 V (With transformer 230V - 24V)</b> |                            |  |  |
| 0301282943  | C12D                       | Fleck 2850/1710 - CHRONO                       |  |
| 0301282943  | E40D                       | Fleck 2850/1710 - ECO 6/4" - 40m <sup>3</sup>  |  |
| 0301282943  | E200D                      | Fleck 2850/1710 - ECO 6/4" - 200m <sup>3</sup> |  |
| 0301280099  | CSXTD                      | Fleck 2850/1710 - CHRONO - SXT Timer           |  |
| 0301280099  | ESXTD                      | Fleck 2850/1710 - ECO 6/4" - SXT Timer         |  |
| 0301288453  | CNXTD                      | Fleck 2850/1710 - CHRONO - NXT Timer           |  |
| 0301282943  | LESS TIMER                 | Fleck 2850/1710 - CHRONO - without timer       |  |
| 0301282943  | LESS TIMER<br>LESS TRANSFO | Fleck 2850/1710 - CHRONO - without timer       |  |

|   |        |                             |  |
|---|--------|-----------------------------|--|
| <b>Fleck 2850 Filter 1"1/2 - 24 V (With transformer 230V - 24V)</b> |        |                             |  |
| 0301283093  | FIL12D | Fleck 2850 Filter - 12 days |  |
| 0301283093  | FILSXD | Fleck 2850 Filter - SXT     |  |

|   |       |  |  |
|---|-------|--|--|
| <b>Fleck 2850 Side 1"1/2 - 24 V (With transformer 230V - 24V)</b> |       |  |  |
|   |       | Te bestellen bij de top valve:                             |  |
| 0401358470  | 61415 | Additional cost roteerbare adapter for zijdelingse montage |  |

| Options    |                        |   |          |
|------------|------------------------|---|----------|
|            | 2850 DLFC              | DLFC > 7 GPM (8, 9, 10, 12, 15, 20, 25 GPM)                   | Standard |
|            | 2850 DLFC              | Additional cost DLFC 1" - 30 GPM                              |          |
|            | 2850 DLFC              | Additional cost DLFC 1" - 35/40/45 GPM                        |          |
|            | NBP                    | Additional cost NBP Piston (een bypass)                       |          |
|            | HW                     | Additional cost for chrono hot water valve ( 82°C)            |          |
|            | EHW                    | Additional cost for eco hot water valve ( 65°C)               |          |
|            |                        | Hot water niet available in SXT, NXT of ET                    |          |
| 0401356289 | EXTERNE FLECK<br>Meter | External Fleck meter 1"1/2<br>Available With chrono NXT valve |          |

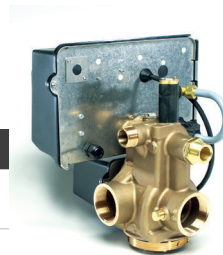
The price of the KIT Fleck # 5 or # 6 (for vessels up to 24") is no longer included in the price of the valve  
If you do not need the KIT, please specify this on your order

| Reference   | Code          | Description   |
|---|---------------|---|
| <b>Kit for Fleck 2850/1650 (# 5) of Fleck 2850/1710 (# 6) valve</b> |               |   |
| 0401998250  | Fleck Kit # 5 | Bottom Distributor & Tube 2"<br>Air Check 500A 915 Mm (36") |
| 0401998251  | Fleck Kit # 6 | Bottom Distributor & Tube 2"<br>Air Check 900               |

The Fleck 2750, 2850 and 2910 valve are delivered with an auxiliary microswitch  
The Fleck 2750, 2850 and 9500 valves are delivered with brine valve 1650 instead of 1600 (except for the hot water valves)

## 2. FLECK

### FLECK 2910 2"



| Reference  | Config.                    | Description   | € |
|--|----------------------------|---|---|
| <b>Fleck 2910/16 Top 2" - 24 V (With transformer 230V - 24V)</b> |                            |   |   |
| 0301291213   | C12D                       | Fleck 2910/1650 - CHRONO                                      |   |
| 0301291213   | E75D                       | Fleck 2910/1650 - ECO 2" - 75 m <sup>3</sup>                  |   |
| 0301291213   | E375D                      | Fleck 2910/1650 - ECO 2" - 375 m <sup>3</sup>                 |   |
| 0301290101   | CSXTD                      | Fleck 2910/1650 - CHRONO - SXT Timer                          |   |
| 0301290101   | ESXTD                      | Fleck 2910/1650 - ECO 2" - SXT Timer                          |   |
| 0301298455   | CNXTD                      | Fleck 2910/1650 - CHRONO - NXT Timer                          |   |
| 0301291213   | LESS TIMER                 | Fleck 2910/1650 - CHRONO - without timer                      |   |
| 0301291213   | LESS TIMER<br>LESS TRANSFO | Fleck 2910/1650 - CHRONO - without timer, without transformer |   |

|  |                            |   |  |
|--|----------------------------|---|--|
| <b>Fleck 2910/17 Top 2" - 24 V (With transformer 230V - 24V)</b> |                            |   |  |
| 0301291214   | C12D                       | Fleck 2910/1710 - CHRONO                                      |  |
| 0301291214   | E75D                       | Fleck 2910/1710 - ECO 2" - 75 m <sup>3</sup>                  |  |
| 0301291214   | E375D                      | Fleck 2910/1710- ECO 2" - 375 m <sup>3</sup>                  |  |
| 0301290102   | CSXTD                      | Fleck 2910/1710 - CHRONO - SXT Timer                          |  |
| 0301290102   | ESXTD                      | Fleck 2910/1710 - ECO 2" - SXT Timer                          |  |
| 0301298456   | CNXTD                      | Fleck 2910/1710 - CHRONO - NXT Timer                          |  |
| 0301291214   | LESS TIMER                 | Fleck 2910/1710 - CHRONO - without timer                      |  |
| 0301291214   | LESS TIMER<br>LESS TRANSFO | Fleck 2910/1710 - CHRONO - without timer, without transformer |  |

|  |        |                             |  |
|--|--------|-----------------------------|--|
| <b>Fleck 2910 Filter 2" - 24 V (With transformer 230V - 24V)</b> |        |                             |  |
| 0301295004   | FIL12D | Fleck 2910 Filter - 12 days |  |

|  |       |                             |  |
|--|-------|-----------------------------|--|
| <b>Fleck 2910 Side 2" - 24 V (With transformer 230V - 24V)</b> |       |                             |  |
| To order with the thop valve :                                 |       |                             |  |
| 0401358470   | 61415 | Rotating side mount adaptor |  |

| Options    |                        |  |          |
|------------|------------------------|--|----------|
|            | 2910 DLFC              | DLFC 1" - 8 tot 25 GPM                                     | Standard |
|            | 2910 DLFC              | Additional cost DLFC - 30 GPM                              |          |
|            | NBP                    | Additional cost NBP piston (no bypass)                     |          |
|            | HW                     | Additional cost for chrono hot water valve ( 82°C)         |          |
|            |                        | Hot water not available in SXT, NXT or ET                  |          |
|            | UF                     | Additional cost Upflow                                     |          |
| 0401356290 | EXTERNE FLECK<br>Meter | External Fleck meter 2"<br>Available with chrono NXT valve |          |

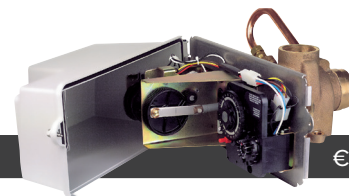
The price of the KIT Fleck # 5 of # 6 (for vessels up to 24") is no longer included in the price of the valve  
If you do not need the KIT, please specify this on your order

| Reference  | Code          | Description   |
|--|---------------|---|
| <b>Kit for Fleck 2910/1650 (# 5) and Fleck 2910/1710 (# 6) valve</b> |               |   |
| 0401998250   | Fleck Kit # 5 | Bottom Distributor & Tube 2"<br>Air Check 500A 915 Mm (36") |
| 0401998251   | Fleck Kit # 6 | Bottom Distributor & Tube 2"<br>Air Check 900               |

The Fleck 2750, 2850 and 2910 valve are delivered with an auxiliary microswitch  
The Fleck 2750, 2850 and 9500 valves are delivered with brine valve 1650 instead of 1600 (except for the hot water valves)

## 2. FLECK

### FLECK 3150/1800 2"



| Reference   | Config. | Description  |
|---|---------|--|
| <b>Fleck 3150/1800 - 2" - without distributor, without DLFC - 24 V (With transformer 230V - 24V) - Top Mount</b>  |         |  |
| 0301312953  | C12D    | Fleck 3150/1800 - CHRONO - Top Mount                       |
| 0301312953  | E75D    | Fleck 3150/1800 - ECO 2" - 75 m <sup>3</sup> - Top Mount   |
| 0301312953  | E375D   | Fleck 3150/1800 - ECO 2" - 375 m <sup>3</sup> - Top Mount  |
| 0301318457  | CNXTD   | Fleck 3150/1800 - CHRONO - NXT - Top Mount                 |
| <b>Fleck 3150/1800 - 2" - without distributor, without DLFC - 24 V (With transformer 230V - 24V) - Side Mount</b> |         |  |
| 0301316362  | C12D    | Fleck 3150/1800 - CHRONO - Side Mount                      |
| 0301316362  | E75D    | Fleck 3150/1800 - ECO 2" - 75 m <sup>3</sup> - Side Mount  |
| 0301316362  | E375D   | Fleck 3150/1800 - ECO 2" - 375 m <sup>3</sup> - Side Mount |
| 0301318458  | CNXTD   | Fleck 3150/1800 - CHRONO - NXT - Side Mount                |
| <b>Fleck 3150/1800 Filter 2" - without distributor, without DLFC - 24 V (With transformer 230V - 24V)</b>         |         |  |
| 0301313639  | FIL-TM  | Fleck 3150/1800 - Filter - Top Mount                       |
| 0301313639  | FIL-SM  | Fleck 3150/1800 - Filter - Side Mount                      |

#### Options

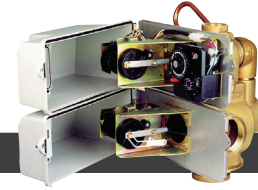
|           |  |
|-----------|--|
| 3150 DLFC | Additional cost DLFC 2" - 25 tot 100 GPM           |
| NBP       | Additional cost NBP piston (no bypass)             |
| HW        | Additional cost for chrono hot water valve ( 82°C) |
| UF        | Additional cost Upflow                             |

The Fleck 3150 valve is delivered without kit

| Reference          | Description   |
|--------------------|---|
| <b>Spare parts</b> |   |
| 0401287625         | Transformer 230V/24V 60va                                     |
| 0401197337         | Powerhead 3150 Mechanical downflow without timer              |
| 0401190015         | Powerhead 3150 NXT  |
| 0401277603         | Timer 3200 7 days   |
| 0401277604         | Timer 3200 12 Days  |
| 0401277607         | Timer 3210 Delayed (please specify 75 or 375 m <sup>3</sup> ) |
| 040110005          | NXT Timer   |
| 0401327868         | O-ring top of tank  |
| 0401237512         | Seals and spacers kit 3150/3900 upper                         |
| 0401187255         | Piston central 3150/3900 upper downflow                       |
| 0401187256         | Piston central 3150/3900 upper upflow                         |
| 0401187260         | NBP piston 3150   |
| 0401179490         | Drive motor 24 V, 50 Hz                                       |
| 0401126820         | Injector 1800 3150/3900 (please specify the injector number)  |
| 0401046574         | Brine valve 1800 3150/3900                                    |
| 0401157018         | Meter 2" (75m <sup>3</sup> )                                  |
| 0401157020         | Meter 2" (375m <sup>3</sup> )                                 |
| 0401159331         | Meter 2" NXT  |
| 0401348252         | Insert 1/2" (1700 & 1800 system)                              |
| 0401348275         | Delrin Sleeve 1/2" (1700 & 1800 system)                       |

## 2. FLECK

### FLECK 3900/1800 3"



| Reference   | Config. | Description  |
|---|---------|--|
| <b>Fleck 3900/1800 - 3" - without distributor, without DLFC - 24 V (With transformer 230V - 24V) - Top Mount</b>  |         |  |
| 0301392955  | C12D    | Fleck 3900/1800 - CHRONO - Top Mount                       |
| 0301392955  | E240D   | Fleck 3900/1800 - ECO 3" - 240 m <sup>3</sup> - Top Mount  |
| 0301398459  | CNXTD   | Fleck 3900/1800 - CHRONO - NXT - Top Mount                 |
| <b>Fleck 3900/1800 - 3" - without distributor, without DLFC - 24 V (With transformer 230V - 24V) - Side Mount</b> |         |  |
| 0301396371  | C12D    | Fleck 3900/1800 - CHRONO - Side Mount                      |
| 0301396371  | E240D   | Fleck 3900/1800 - ECO 3" - 240 m <sup>3</sup> - Side Mount |
| 0301398460  | CNXTD   | Fleck 3900/1800 - CHRONO - NXT - Side Mount                |
| <b>Fleck 3900/1800 Filter - 3" - without distributor, without DLFC - 24 V (With transformer 230V - 24V)</b>       |         |  |
| 0301393092  | FIL-SM  | Fleck 3900/1800 - Filter - Top Mount                       |
| 0301393092  | FIL-TM  | Fleck 3900/1800 - Filter - Side Mount                      |

#### Options

|                     |  |
|---------------------|--|
| 3900 DLFC           | Additional cost DLFC 2" - 25 tot 100 GPM                   |
| NBP                 | Additional cost NBP piston (no bypass)                     |
| UF                  | Additional cost Upflow                                     |
| EXTERNE FLECK Meter | External Fleck meter 3"<br>Available with chrono NXT valve |

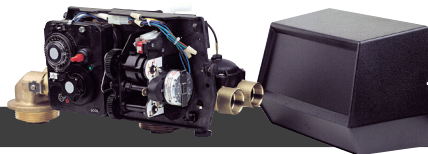
The Fleck 3150 valve is delivered without kit

| Reference          | Description   |
|--------------------|---|
| <b>Spare parts</b> |   |
| 0401287624         | Transformer 230V/24V 105va                                      |
| 0401197343         | Powerhead upper 3900 Mechanical downflow without timer          |
| 0401190015         | Powerhead upper 3900 NXT  |
| 0401190009         | Powerhead lower 3900 Mechanical                                 |
| PH3900-007         | Powerhead lower 3900 NXT  |
| 0401277603         | Timer 3200 7 days   |
| 0401277604         | Timer 3200 12 Days  |
| 0401277607         | Timer 3210 Delayed (please specify 240 or 1200 m <sup>3</sup> ) |
| 0401237512         | Seals and spacers kit 3150/3900 upper                           |
| 0401237514         | Seals and spacers kit 3900 lower                                |
| 0401187255         | Piston 3150/3900 upper downflow                                 |
| 0401187257         | Piston 3150/3900 lower downflow                                 |
| 0401187258         | Piston 3900 lower NBP   |
| 0401179490         | Drive motor 24V, 50 Hz  |
| 0401126820         | Injector 1800 3150/3900 (please specify the injector number)    |
| 0401046574         | Brine valve 1800 3150/3900                                      |
| 0401157036         | Meter 3" (240m <sup>3</sup> )                                   |
| 0401356292         | Meter 3" NXT  |
| 0401348252         | Insert 1/2" (1700 & 1800 system)                                |
| 0401348275         | Delrin Sleeve 1/2" (1700 & 1800 system)                         |

## 2. FLECK

### 1 VALVE / 1 ADAPTER

#### FLECK 9000 3/4" OF 1"



| Reference | Config. | Description | € |
|-----------|---------|-------------|---|
|-----------|---------|-------------|---|

#### Fleck 9000 3/4" - 24 V (With transformer 230V - 24V)

|            |       |   |
|------------|-------|---|
| 0301906075 | DE8D  | Fleck 9000/1600 - Duplex - ECO 3/4" noryl - 8 m <sup>3</sup>  |
| 0301906075 | DE40D | Fleck 9000/1600 - Duplex - ECO 3/4" noryl - 40 m <sup>3</sup> |
| 0301900103 | DSXD  | Fleck 9000/1600 - Duplex - ECO 3/4" noryl - SXT Timer         |

A bypass or yoke can be used with the Fleck 9000 ECO 3/4" valve

#### Fleck 9000 1" - 24 V (With transformer 230V - 24V)

|            |        |   |
|------------|--------|---|
| 0301906075 | DE20D  | Fleck 9000/1600 - Duplex - ECO 4/4" bronze - 20 m <sup>3</sup>  |
| 0301906075 | DE100D | Fleck 9000/1600 - Duplex - ECO 4/4" bronze - 100 m <sup>3</sup> |

A bypass or yoke can not be used with the Fleck 9000 ECO 1" valve

|         |   |
|---------|---|
| EHW 3/4 | Additional cost Hot water - Meter & Bronze bypass 3/4" (65°C) |
| EHW 4/4 | Additional cost Hot water - Bronze Meter 4/4" (65°C)          |
| UF      | Additional cost Upflow  |

#### Connection kits between vessels

|            |           |  |
|------------|-----------|--|
| 0401999133 | MIC005127 | Kit Hoses + yokes Fleck 9000 - L = 300mm |
| 0401999133 | MIC005126 | Kit Hoses + yokes Fleck 9000 - L = 400mm |



The connection kit between vessels is not delivered with the separate valve  
Please consult the Spare Parts Catalogue for spare parts prices

The price of the KIT Fleck # 7 is no longer included in the price of the valve  
If you do not need the KIT, please specify this on your order

| Reference | Code | Description |
|-----------|------|-------------|
|-----------|------|-------------|

#### Kit for Fleck 9000 valve

|            |               |   |
|------------|---------------|---|
| 0401998309 | Fleck Kit # 7 | Distributor 1" + tube 55" (140cm) - 2 pieces<br>Air Check 500A 915 Mm (36") |
|------------|---------------|---|

## 2. FLECK

### 1 VALVE / 1 ADAPTER

#### FLECK 9100 3/4" OR 1"



| Code  | Code   | Description   | € |
|---|--------|---|---|
| <b>Fleck 9100 3/4" - 24 V (With transformer 230V - 24V)</b>     |        |   |   |
| 0301914259  | DE8D   | Fleck 9100/1600 - Duplex - ECO 3/4" noryl - 8 m <sup>3</sup>                  |   |
| 0301914259  | DE40D  | Fleck 9100/1600 - Duplex - ECO 3/4" noryl - 40 m <sup>3</sup>                 |   |
| 0301910104  | DSXD-M | Fleck 9100/1600 - Duplex - ECO 3/4" noryl - SXT Timer - with mixing           |   |
| 0301910104  | DSXU   | Fleck 9100/1600 - Duplex - ECO 3/4" noryl - SXT Timer - up flow - with mixing |   |
| A bypass or yoke can be used with the Fleck 9000 ECO 3/4" valve |        |   |   |

|   |        |   |  |
|---|--------|---|--|
| <b>Fleck 9100 1" - 24 V (With transformer 230V - 24V)</b>         |        |   |  |
| 0301914259  | DE20D  | Fleck 9100/1600 - Duplex - ECO 4/4" bronze - 20 m <sup>3</sup>  |  |
| 0301914259  | DE100D | Fleck 9100/1600 - Duplex - ECO 4/4" bronze - 100 m <sup>3</sup> |  |
| A bypass or yoke can not be used with the Fleck 9000 ECO 1" valve |        |   |  |

| Options   |                        |
|---|------------------------|
| UF  | Additional cost Upflow |
| <p>The connection kit between vessels is delivered with the separate valve<br/>                     Please mention the diameter of the vessels on your order<br/>                     Please consult the Spare Parts Catalogue for spare parts prices</p> |                        |

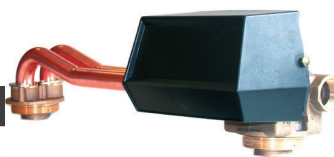
The price of the KIT Fleck # 7 is no longer included in the price of the valve  
 If you do not need the KIT, please specify this on your order

| Reference                       | Code          | Description   |
|---------------------------------|---------------|---|
| <b>Kit for Fleck 9000 valve</b> |               |   |
| 0401998309                      | Fleck Kit # 7 | Distributor 1" + tube 55" (140cm) - 2 pieces<br>Air Check 500A 915 Mm (36") |

## 2. FLECK

### 1 VALVE / 1 ADAPTER

#### FLECK 9500 1" 1/2



| Reference | Config. | Description | € |
|-----------|---------|-------------|---|
|-----------|---------|-------------|---|

#### Fleck 9500/1600 Top 1"1/2 - 24 V (With transformer 230V - 24V)

|            |        |   |  |
|------------|--------|---|--|
| 0301952940 | DE40D  | Fleck 9500/1650 - Duplex - ECO 6/4" - 40 m <sup>3</sup> |  |
| 0301950105 | DSX64D | Fleck 9500/1650 - Duplex - ECO 6/4" - SXT Timer         |  |

#### Fleck 9500/1700 Top 1"1/2 - 24 V (With transformer 230V - 24V)

|            |        |  |  |
|------------|--------|--|--|
| 0301956081 | DE40D  | Fleck 9500/1700 - Duplex - ECO 6/4" - 40 m <sup>3</sup>  |  |
| 0301956081 | DE200D | Fleck 9500/1700 - Duplex - ECO 6/4" - 200 m <sup>3</sup> |  |
| 0301950106 | DSX64D | Fleck 9500/1700 - Duplex - ECO 6/4" - SXT Timer          |  |

#### Options

|     |  |  |
|-----|--|--|
| EHW | Additional cost hot water for ECO valve (65°C) |  |
|-----|--|--|

#### Connection kits between vessels

|            |          |  |  |
|------------|----------|--|--|
| 0401298277 | 28137-16 | Kit copper tubes with adapter 16" for Fleck 9500 |  |
| 0401298278 | 28137-20 | Kit copper tubes with adapter 20" for Fleck 9500 |  |
| 0401298279 | 28137-24 | Kit copper tubes with adapter 24" for Fleck 9500 |  |
| 0401995128 |          | Connection kit (flexible hoses) Fleck 9500       |  |



The connection kit between vessels is NOT delivered with the separate valve  
Please consult the Spare Parts Catalogue for spare parts prices

The price of the KIT Fleck # 8 and # 9 is no longer included in the price of the valve  
If you do not need the KIT, please specify this on your order

| Reference | Code | Description |
|-----------|------|-------------|
|-----------|------|-------------|

#### Kit for Fleck 9500/1650 (# 8) and Fleck 9500/1700 (# 9) valve

|            |               |   |
|------------|---------------|---|
| 0401998283 | Fleck Kit # 8 | Bottom Distributor & Tube 2In - 2 pieces<br>Air Check 500A 915 Mm (36") |
| 0401998284 | Fleck Kit # 9 | Bottom Distributor & Tube 2In - 2 pieces<br>Air Check 900               |

The Fleck 2750, 2850 and 9500 valves are delivered with brine valve 1650 instead of 1600 (except for the hot water valves)

## 2. FLECK

### 2 VALVES / 1 REMOTE METER OR CONTROLLER

#### FLECK DUPLEX 2910 2"



| Reference   | Description  | € |
|---|--|---|
| <b>Pallas Duplex System with Fleck 2910 2" valve (DLFC 7 GPM - 24V) and ES2030 controller</b> |  |   |
| 0301290214  | PALLAS Duplex System :<br>- 2 prewired Fleck 2910/1600 NBP valves<br>- 1 Impulswatermeter 2" (Wet meter)<br>- 1 PALLAS ES2030 controller |   |
| 0301298314  | PALLAS Duplex System :<br>- 2 prewired Fleck 2910/1700 NBP valves<br>- 1 Impulswatermeter 2" (Wet meter)<br>- 1 PALLAS ES2030 controller |   |
| <b>Pallas Duplex System with Fleck 2910 2" NXT valve (DLFC 7 GPM - 24V)</b>                   |  |   |
| 0301290066  | PALLAS Duplex System :<br>- 2 Fleck 2910/1600 NXT NBP valves<br>- Communication cable<br>- Impulswatermeter 2"                           |   |
| 0301290067  | PALLAS Duplex System :<br>- 2 Fleck 2910/1710 NXT NBP valve<br>- Communication cable<br>- Impulswatermeter 2"                            |   |

Spare parts: see Fleck 2910 valve

#### FLECK DUPLEX 3900 3"



| Reference  | Description   | € |
|--|---|---|
| <b>Pallas Duplex System Fleck 3900/1800 3" (without distributor, without DLFC - 24 V - Top Mount) and ES2030 controller</b>  |   |   |
| 0301299722   | Duplex system PALLAS :<br>- 2 prewired Fleck 3900/1800 NBP valves - Top Mount<br>- 1 Impulswatermeter 3" (dry meter)<br>- 1 PALLAS ES2030 controller  |   |
| <b>Pallas Duplex System Fleck 3900/1800 3" (without distributor, without DLFC - 24 V - Side Mount) and ES2030 controller</b> |   |   |
| 0301299723   | Duplex system PALLAS :<br>- 2 prewired Fleck 3900/1800 NBP valves - Side Mount<br>- 1 Impulswatermeter 3" (dry meter)<br>- 1 PALLAS ES2030 controller |   |
| <b>Pallas Duplex System with Fleck 3900/1800 NXT 3" (without distributor, without DLFC - 24 V - Top Mount)</b>               |   |   |
| 0301393411   | Duplex system PALLAS NXT:<br>- 2 Fleck 3900/1800 NXT NBP valve - Top Mount<br>- Communication cable<br>- Impulswatermeter 3"                          |   |
| <b>Pallas Duplex System with Fleck 3900/1800 NXT 3" (without distributor, without DLFC - 24 V - Side Mount)</b>              |   |   |
| 0301390070   | Duplex system PALLAS NXT:<br>- 2 Fleck 3900/1800 NXT NBP valves - Side Mount<br>- Communication cable<br>- Impulswatermeter 3"                        |   |

Spare parts: see Fleck 3900 valve



# CHAPTER 1 VALVES & ACCESSORIES

## 2. FLECK

ALL FLECK VALVES ARE DELIVERED WITH TRANSFORMER AND TOP DISTRIBUTOR :

|   |  |
|---|--|
| 4600, 5600  | 230 V / 50 Hz                                  |
| 4600SXT, 5000SXT, 5600SXT, 6600, 6700, 7700, 9000, 9100, 9500 | 24 V with transformer 230-24 V / 50 Hz, 10 VA  |
| 2510, 2750, 2850, 2910, 3150                                  | 24 V with transformer 230-24 V / 50 Hz, 60 VA  |
| 3900  | 24 V with transformer 230-24 V / 50 Hz, 105 VA |

Certification "CE"

All our valves comply With the requirements of the European Directives 89/336/CEE "Electromagnetic Compatibility" and/or 73/23/CEE "Low Voltage".

| Reference              | Code     | Description                               | € |
|------------------------|----------|---|---|
| <b>Yoke / Manifold</b> |          |   |   |
| 0401358415             | 13398-10 | Bronze yoke 1" BSP - F (domestic - 9000)  |   |
| 0401358417             | 24735    | Bronze yoke with mixing 1" BSP - F (9000) |   |
| 0401358423             | 18706-12 | Noryl yoke 3/4" BSP - M (domestic - 9000) |   |
| 0401358419             | 18706-10 | Noryl yoke 1" BSP - M (domestic - 9000)   |   |



18706-10



13398-10

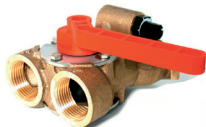


24735

| Reference     | Code      | Description   | € |
|---------------|-----------|---|---|
| <b>Bypass</b> |           |   |   |
| 0401358424    | 28502BU   | Stainless steel bypass 1" F (domestic - 9000 3/4")                      |   |
| 0401358426    | 24734-10  | Bronze bypass 1" F With mixing (9000 3/4")                              |   |
| 0401358428    | 26054     | Noryl bypass without connections (domestic - 9000)                      |   |
| 0401350781    | MIC000715 | Noryl bypass with connections 3/4" (domestic - 9000)                    |   |
| 0401350781    | MIC000924 | Noryl bypass with connections 1" (domestic - 9000)                      |   |
| 0401354624    | 40569-01  | Bypass with clips for 7700 valve (without connections)                  |   |
| 0401354617    | 40563-11  | 1" Connections BSP for bypass 7700 (Unit Price - to order by 2 pieces)  |   |
| 0401354621    | 40565-11  | 5/4"Connections BSP for bypass 7700 (Unit Price - to order by 2 pieces) |   |



28502BU



24734-10



26054



28356



40563-11