

Floor Length Tablecloth & Napkins with Mitered Corners

Update the look of any dining space with a designer tablescape. Discover how to fabricate a floor length tablecloth and custom napkins with mitered corners for an upscale look perfect for entertaining.



Materials & Supplies

Rowley Products	Item #
A&E Outdoor Thread	T06K/
Moisture Resistant Fabric, White	SF30
Wood Ruler, 6"	MR6
Pattern Making Film	DYC15/3
Pen Style Chalk Marker	WW13
Flexi Tape Measure	DT16
Sewing/Ironing Stiletto	WW80
Magnetic Scissor & Pin Spot	WW43
Sewing Gauge	MR16
Iron-On Bonding Tape with Silicone Release Paper 3/8" Width	FT37
Fringe Adhesive	FA10
Lead-Free Weights, Sausage Bead, Fabric Covered	SW79

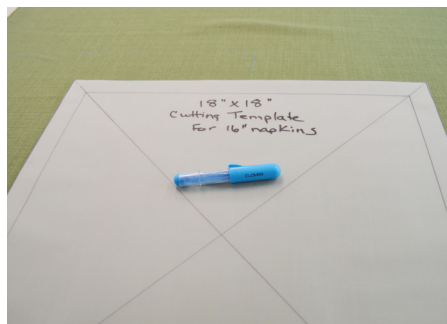
Floor Length Tablecloth & Napkins with Mitered Corners: Step-By-Step Instructions

Napkins with Mitered Corners:

- 1 Make patterns for the napkins using pattern making film. Make one 18" x 18" with a 1" border marking around all four sides. This will be for the cut size of the napkins. Make one 16" x 16" for the finished napkin size.



- 2 Pull a thread to get a good cut edge for the napkins. Place the 18" x 18" cutting template on fabric and mark with a chalk marker.



- 3 Place napkin fabric face side down on template.



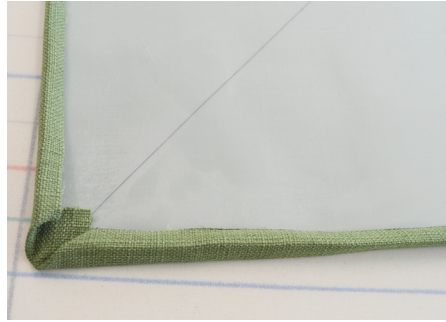
- 4 Press the edges of the fabric to the 1" mark on the template. Fold the corners up to create a mitered corner. Press in place.



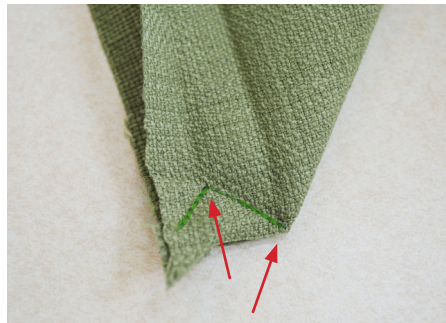
- 5 Remove the cutting template. Insert the 16" x 16" template and fold mitered corners. Press.



- 6 Fold the raw edge of the napkin inside and press. The pressed lines are important as these become your stitch lines.



- 7 Remove the napkin template. Fold the corners right sides together and stitch from the outer napkin corner to the inside mitered corner as shown. Clip to the points shown by the RED arrows.



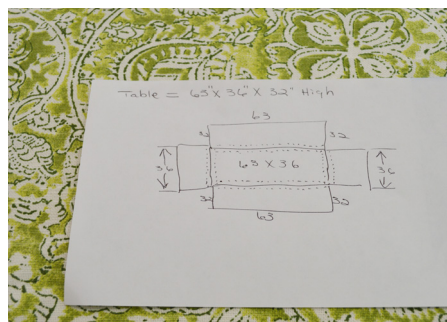
- 8 Refold the edges. Press. Top stitch to complete the napkin.



Floor Length Tablecloth:

The floor length tablecloth is made with a separate top and sides. This allows the corners to become a tailored style rather than a bell shape.

- 1 Draw out the size of the tablecloth to show the finished sizes and pieces.



- 2 The tabletop is cut at 65" x 38". Centering pattern repeat map out the cutting lines for the top. Mark and cut.



- 3 Two sides are cut at 71" x 37", and the pattern is cut to match the long sides of the tablecloth. Find the pattern match for the two sides, mark and cut. Two additional sides are cut at 44" x 37", and the pattern is cut to match the two short sides of the tablecloth. Find the pattern match, mark and cut.



- 4 Serge all four sides of the tablecloth top. Serge the tops of each of the side cuts. Lay out all pieces on the table and check for accuracy.



- 5 Mark and hem the sides and bottom of each of the side cuts. Press each side and bottom at 4".



- 6 Unfold and press the raw edge to the 4" mark, creating a double 2" fold.



- 7 Miter the bottom corners. Fold the corners, matching the pressed lines. Fold and press the double 2" hem and press again, forming the mitered corner. Do this for both bottom corners on each side piece.



- 8 After pressing the miter, unfold the miter. Fold the corner right sides together, pin, and sew the miter.



- 9 Before turning, clip the corners of the miters as shown, right sides out, folding the fabric inside.



- 10 Press the seam open and turn the miter right sides out.



- 11 Before hemming, insert beaded weight chain in the bottom of each of the side cuts. To hold the weight chain in place, put a little dot of fringe adhesive on the ends of the chain, in the corners of the skirt.



- 12 Topstitch the sides and bottom of the tablecloth sides.



- 13 After all the sides are prepared, match the pattern between the sides and the tablecloth top and stitch.



14 Press the seams open. Press the serged edges under.



15 Pin and top stitch to enclose the serged edges to complete the tablecloth.

