

Floor Plans  
Specifications  
& Features



*A D V E N T U R E   W I T H   S T Y L E*

1 9 9 9

**FLEETWOOD RV**

**A** TASTE FOR ADVENTURE. There's a good reason Terry is America's all-time best-selling towable. After all, when you've been giving people the affordable luxury they want for nearly 50 years, they keep coming back for more. And this year we're giving you more than ever before. With seven stylish new models, ranging from the full-size convenience of the all-new Terry Sport Utility Trailer and Terry Ultralite to the beautifully appointed Terry EXL and Terry Park Trailer, not to mention the ever popular Terry Lite, Terry and Terry EX, you're bound to find just what you're looking for. As you'd expect in a Fleetwood RV, each Terry is quality engineered to demanding specifications to give you rugged dependability combined with all the residential comforts of home. With quality construction throughout, there's not a detail that's been overlooked. Outside, the super-smooth, clean lines of its aerodynamic design give it a fresh, bold look. Inside, you'll find its spacious floor plans maximize livability. Expansive optional slide-outs create more space in dining, living and sleeping areas. Fresh new color choices in appealing fabrics make for an elegant lifestyle that's as rugged as it is rich. With so many floor plan combinations to choose from, there's bound to be one that's perfect for your lifestyle and budget. So, if you're looking for adventure with style, you don't need to look any further than a Terry.

**Terry  
Ultralite**

*Page 3-5*

**Terry Lite**

*Page 6-8*

**Terry**

*Page 9-14*

**Terry EX**

*Page 15-20*

**Terry EXL**

*Page 21-23*

**Terry SUT**

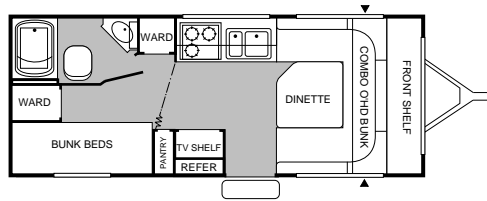
*Page 24-25*

**Terry  
Park Trailer**

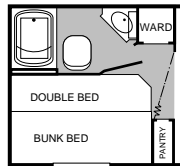
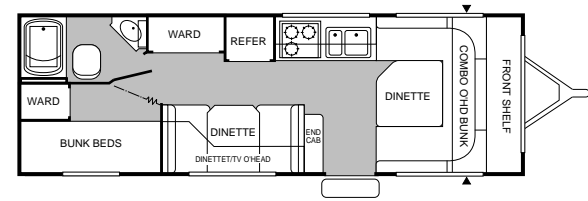
*Page 26-27*

## ALL NEW MODELS!

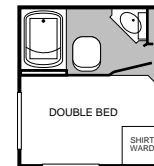
**721E**



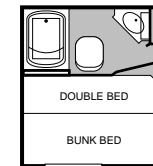
**725R**



OPT. #846

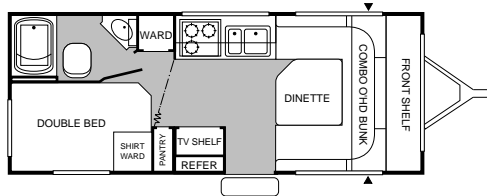


OPT. #845

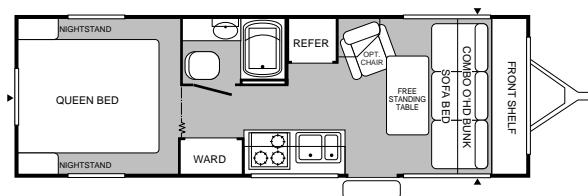


OPT. #846

**721G**



**725T**



▲ = Exterior Storage

Some models may not be available from all manufacturing plants. Floor plans are subject to change during the model year. Contact your dealer for complete details.

# 1999 TERRY ULTRALITE SPECIFICATIONS

## Travel Trailers & Fifth Wheels

ULTRALITE MODELS	721E	721G	725R	725T
GVWR (Gross Vehicle Weight Rating)	4,400	4,400	4,900	4,900
Gross Dry Weight <sup>1</sup>	2,990	3,030	3,380	3,440
Carrying Capacity <sup>2</sup>	1,410	1,370	1,520	1,460
Hitch Dry Weight <sup>1</sup>	370	370	330	410
Dry Axle Weight <sup>1</sup>	2,620	2,660	3,050	3,030
Length	21'6" <sup>3</sup>	21'6" <sup>3</sup>	25'6" <sup>3</sup>	25'11" <sup>3</sup>
Width	7'2"	7'2"	7'2"	7'2"
Height <sup>4</sup>	8'3"	8'3"	8'3"	8'3"
Interior Height	76"	76"	76"	76"
Interior Width	84"	84"	84"	84"
Tires – Size	ST175/ 80R 13(B)	ST175/ 80R 13(B)	ST175/ 80R 13(C)	ST175/ 80R 13(C)
Fresh Water Tank <sup>5</sup> – gal.	30	30	30	30
Gray Water Holding Tank <sup>5</sup> – gal.	30	30	30	30
Black Water Holding Tank <sup>5</sup> – gal.	30	30	30	30
Bed/Bunk Size – Standard	27"x74" (2) Bunk 58"x84" Dinette	48"x74" Dbl. 58"x84" Dinette	27"x74" (2) Bunk 58"x84" Dinette	60"x75" Queen

<sup>1</sup> All dry weights are based on standard model features and do not include optional features or equipment.

<sup>2</sup> Carrying capacity is determined by subtracting Gross Dry Weight from GVWR. Carrying capacity includes all fluids, optional equipment and personal cargo.

<sup>3</sup> Includes 3'6" for hitch.

<sup>4</sup> Add 12" if equipped with optional roof air conditioner.

<sup>5</sup> Approximate gallons.

# 1999 TERRY ULTRALITE STANDARD FEATURES

## Travel Trailers

### EXTERIOR

Aerodynamic Front Profile w/ High Impact ABS Cap  
Independent Torsion Suspension System  
Corrosion Resistant A-Frame and Automotive Style Bumper  
Laminated, Welded Aluminum Framed Walls, Floor and Ceiling  
Smooth Fiberglass Exterior  
Box Channel, Steel Cambered Chassis  
10" Electric Brakes  
Durable Molded Wheel Well Skirts  
13" Radial Ply Tires w/ White Spoke Wheels  
Retractable Non-Skid Entry Step  
Locking, Insulated Radius Luggage Doors  
Flush Mount Radius Rockguard Awning  
One-Piece Seamless Rubber Roof  
Beadboard Insulation  
26" Wide Main Radius Entry Door w/ Window & Screen  
Reinforced Screen Door w/ Lock Shield & Kick Panel  
Flush Combo Entry Latch/Dead Bolt Lock  
Radius White Framed Windows  
Enclosed LPG Tank Compartment  
Large, Through-Storage Front Compartment  
Skylight Roof Vents  
Wall-Switched Doorside Patio Light w/ Amber Lens  
Battery Compartment  
Fully Enclosed Chassis  
Enclosed Below Floor Water & Waste Tanks w/ Remote Valve  
Lower Radius Skirting w/ABS Corner Caps  
Sonic Welded Automotive Style Clearance Lights  
G.F.I. Protected 120V Duplex Receptacle

### INTERIOR

2 Color-Coordinated Designer Interiors

Oak Mortise and Tenon Cabinet Doors  
Vinyl Rollgoods Throughout  
Residential Window Coverings  
Color-Coordinated Miniblinds Throughout  
Decor-Coordinated Bedspread (Double or Queen)  
Front Combo Overhead Bunk (Most Models)  
Quality Furniture by Flexsteel®  
Wall-Switched 12V Lights  
Fabric Trimmed Dinettes & Entry Door Header

### GALLEY

Panoramic Galley Window  
Double Bowl Porcelain Sink  
Large Swing Spout Faucet  
Galley Storage  
Pantry Cabinet w/ Fixed Shelves (Most Models)  
120V Appliance Receptacle at Countertop  
High Pressure Laminated Countertop  
Decor Wall Border

### BATH

Oval Lavy Bowl  
Overhead Medicine Cabinet w/ Mirror  
Thetford® Toilet  
ABS Tub/Shower  
12V Power Roof Exhaust Vent  
Shower Curtain w/ Valance and Tie Back  
G.F.I. Protected 120V Duplex Receptacle  
Wall-Switched Ceiling Light  
Skylight in Tub/ Shower

### APPLIANCES/EQUIPMENT

Dometic® LP/ Electric Refrigerator  
Atwood® 3-Burner Cook Top

Range Hood w/12V Light and Exhaust Fan  
Wall-Mounted Systems Monitor Panel  
LP Fast Recovery Water Heater, 6 Gal.  
30 Gallon Water and Waste Tanks  
hydroflame® Furnace w/ Thermostat  
Microwave w/ Turntable  
A&E Patio Awning  
Enclosed Dual 5 Gallon LPG Tanks w/ Regulator & Auto-Changeover  
Smoke Detector  
Fire Extinguisher  
Freeze Resistant Water Lines  
LPG Leak Detector  
Water Heater Bypass

### ELECTRICAL

Electronic Converter w/ Built-in Battery Charger  
120V Central Electrical Panel  
120V Duplex Receptacles Throughout  
120V Ground Fault Circuit Protection  
Wall-Switched Interior Lights  
Prewired for TV Antenna  
Prewired for Air Conditioner  
Prewired for Stereo and Speaker

### ULTRALITE POPULAR OPTIONS

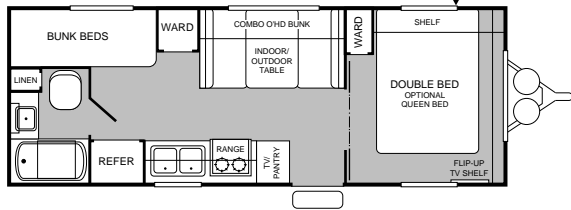
Coleman® 13.5M BTU Roof Air  
AM/FM Cassette Stereo  
AM/FM CD Player  
Stabilizing Jacks/2 Pr.  
Spare Tire - 13"  
Chair  
TV Antenna

*Not all models include all features. See your dealer for complete details.*

**822W**



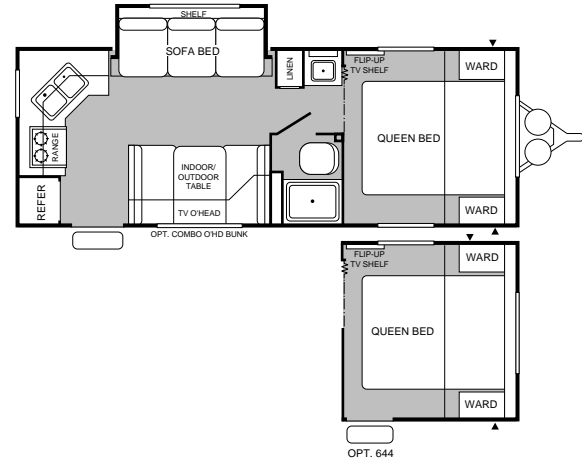
**824Z**



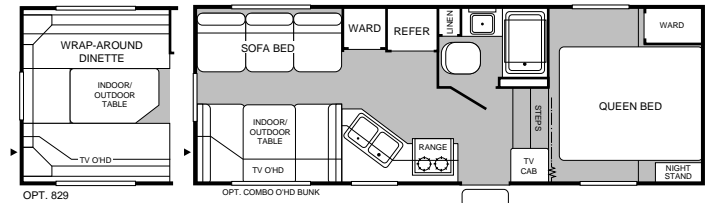
**825B**



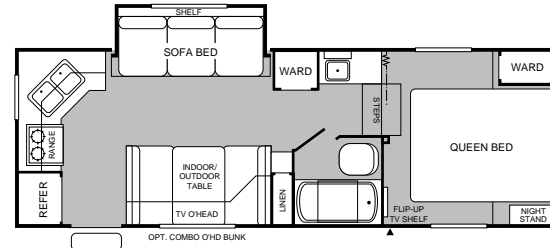
**825Y**



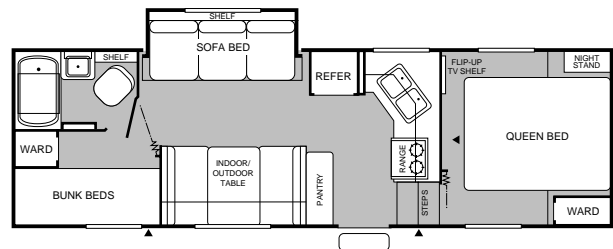
**821 5B**  
*fifth wheel*



**824 5C**  
*fifth wheel*



**825 5X**  
*fifth wheel*



▲ = Exterior Storage

Some models may not be available from all manufacturing plants. Floor plans are subject to change during the model year. Contact your dealer for complete details.

# 1999 TERRY LITE SPECIFICATIONS

## Travel Trailers & Fifth Wheels

TERRY LITE MODELS	822W	824Z	825B	825Y	821 5B	824 5C	825 5X
GVWR (Gross Vehicle Weight Rating)	5,400	5,600	5,800	6,000	5,800	6,300	6,700
Gross Dry Weight <sup>1</sup>	3,710	3,810	3,970	4,280	4,250	4,630	4,920
Carrying Capacity <sup>2</sup>	1,690	1,790	1,830	1,720	1,550	1,670	1,780
Hitch Dry Weight <sup>1</sup>	480	450	420	440	770	630	1,020
Dry Axle Weight <sup>1</sup>	3,230	3,360	3,550	3,840	3,480	4,000	3,800
Length	24'2" <sup>3</sup>	25'9" <sup>3</sup>	25'11" <sup>3</sup>	25'11" <sup>3</sup>	23'11"	25'4"	27'11"
Width	8'0"	8'0"	8'0"	8'0"	8'0"	8'0"	8'0"
Height <sup>4</sup>	8'11"	8'11"	8'11"	9'3"	9'6"	9'10"	9'10"
Interior Height	76"	76"	76"	76"	76"	76"	76"
Tires – Size	ST205/ 75R 14(B)	ST205/ 75R 14(B)	ST205/ 75R 14(B)	ST205/ 75R 14(B)	ST205/ 75R 14(B)	ST205/ 75R 14(B)	ST205/ 75R 14(B)
Fresh Water Tank <sup>5</sup> – gal.	40	40	40	40	40	40	40
Gray Water Holding Tank <sup>5</sup> – gal.	40	40	40	30/30	40	30/30	30/30
Black Water Holding Tank <sup>5</sup> – gal.	30	30	30	30	30	30	30
Bed Size – Standard	48"x75" Dbl.	54"x75" Dbl. 30"x75" Bunk	60"x75" Queen	60"x75" Queen	60"x75" Queen	60"x75" Queen	60"x75" Queen 30"x75" Bunk
Bed Size – Option	30"x75" Bunk	60"x75" Queen	N/A	N/A	32"x75" Twin	N/A	N/A

<sup>1</sup> All dry weights are based on standard model features and do not include optional features or equipment.

<sup>2</sup> Carrying capacity is determined by subtracting Gross Dry Weight from GVWR. Carrying capacity includes all fluids, optional equipment and personal cargo.

<sup>3</sup> Includes 3'6" for hitch.

<sup>4</sup> Add 12" if equipped with optional roof air conditioner.

<sup>5</sup> Approximate gallons.

# 1999 TERRY LITE STANDARD FEATURES

## Travel Trailers & Fifth Wheels

### **EXTERIOR**

Front Radius Rockguard Awning (Travel Trailers)  
One-Piece Seamless Rubber Roof  
High Gloss Arctic White Exterior Finish  
Entry Door w/ Window & Screen Door  
One-Piece Flush Latch/Dead Bolt Lock  
Awning  
14" Spoke Wheels  
4 Wheel Electric Brakes  
Powder Coated Bumper – Sewer Hose Carrier  
Locking, Insulated Luggage Doors w/ Finger Pulls  
Potable Water Fill  
Exterior Shower  
Dual Safety Chains  
Dual Battery Rack  
Double Entry Step

### **INTERIOR**

Overhead Bunk Cabinet (Select Models)  
Large Radiused Torque & Slider Windows  
Miniblinds Throughout (Except Bunk Areas)  
Designer Valances

Oak Raised Panel Doors  
Bedspring  
Bed-Lift Struts  
Folding Room Divider (Most Models)  
Indoor/Outdoor Dinette Table  
Full-Length Vinyl Flooring  
Range Cover  
Sink Lid

### **BATH**

ABS Tub/Shower Pan w/ Walls  
Bath Medicine Cabinet w/ Mirrored Door  
Towel Bars  
Large Dome Skylight  
Power Roof Vent  
Thetford® Freshwater Toilet

### **APPLIANCES/EQUIPMENT**

Dometic® Double Door LP/Electric Refrigerator  
Magic Chef® 3-Burner, High-Output Range w/ Oven  
Electric Touch Microwave w/ Turntable  
6 Gal. LP Water Heater  
Water Heater Bypass

Large Porcelain Sink  
Fire Extinguisher  
Smoke Detector  
LPG Leak Detector  
7 Gal. Dual LP Bottles w/ Regulator & Auto-Changeover

### **ELECTRICAL**

Electric Cable Hatch/Storage Compartment  
120V G.F.I. Protected Circuits  
Prewired for Optional A/C  
Wall-Switched Patio Light  
Hitch Light  
AM/FM Cassette Stereo  
TV Antenna/Park Cable

### **TERRY POPULAR OPTIONS**

13.5M BTU A/C  
Tinted Safety Glass Windows  
Spare Radial Tire w/ Carrier  
Carpeting in Living Area & Bedroom

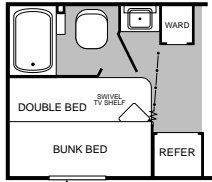
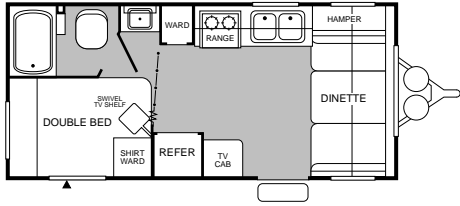
*Not all models include all features. See your dealer for complete details.*





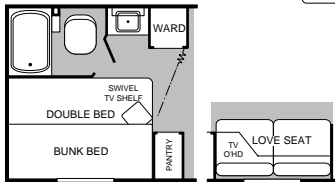
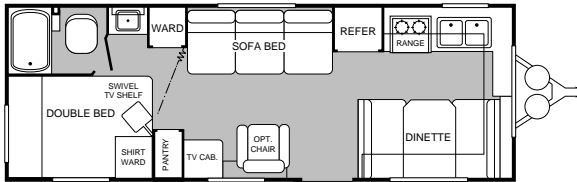
# 1999 TERRY FLOOR PLANS

**19N**  
**NEW!**



OPT. 846

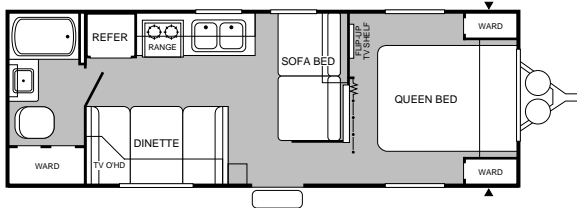
**24C**



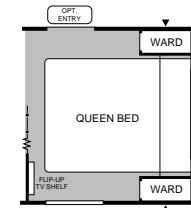
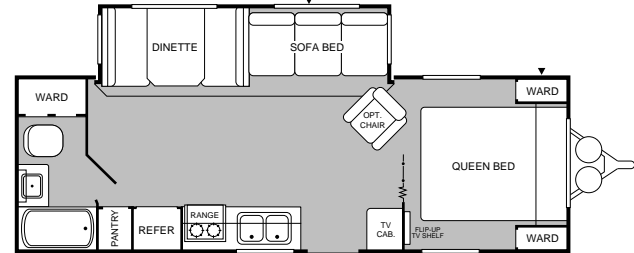
OPT. 846

OPT. 197

**24J**  
**NEW!**

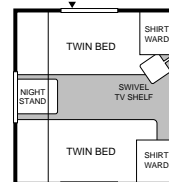
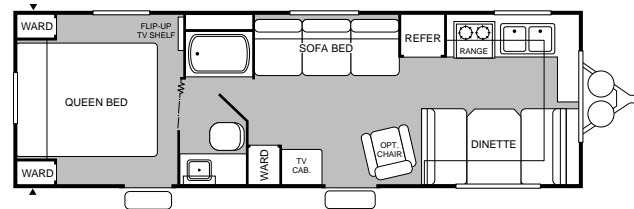


**26H**



OPT. 642

**26T**



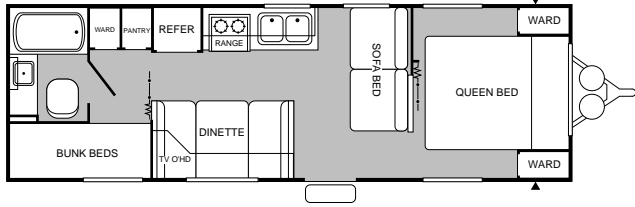
OPT. 836

▲ = Exterior Storage

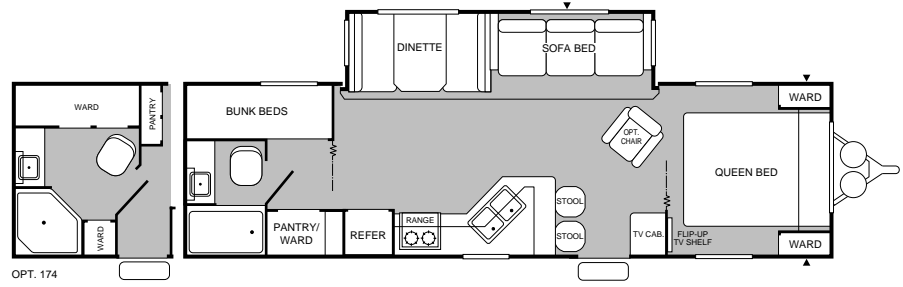
Some models may not be available from all manufacturing plants. Floor plans are subject to change during the model year. Contact your dealer for complete details.



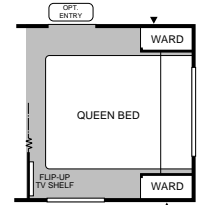
**27X  
NEW!**



**31G**

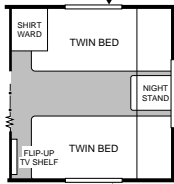
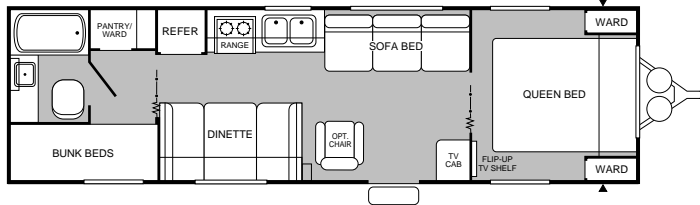


OPT. 174



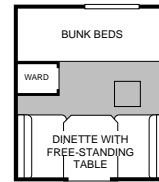
OPT. 642

**29S**

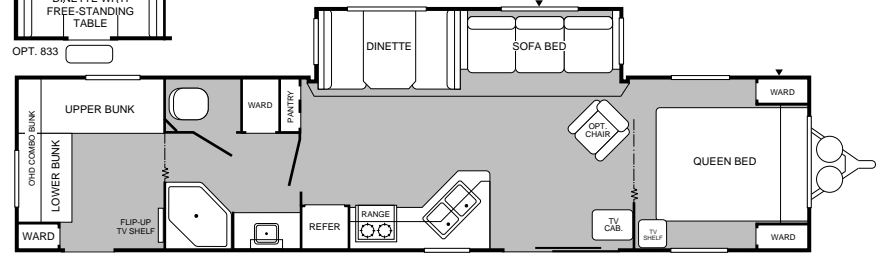


OPT. 836

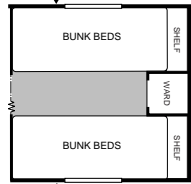
**37E  
NEW!**  
with Park  
Model Features



OPT. 833



OPT. 854



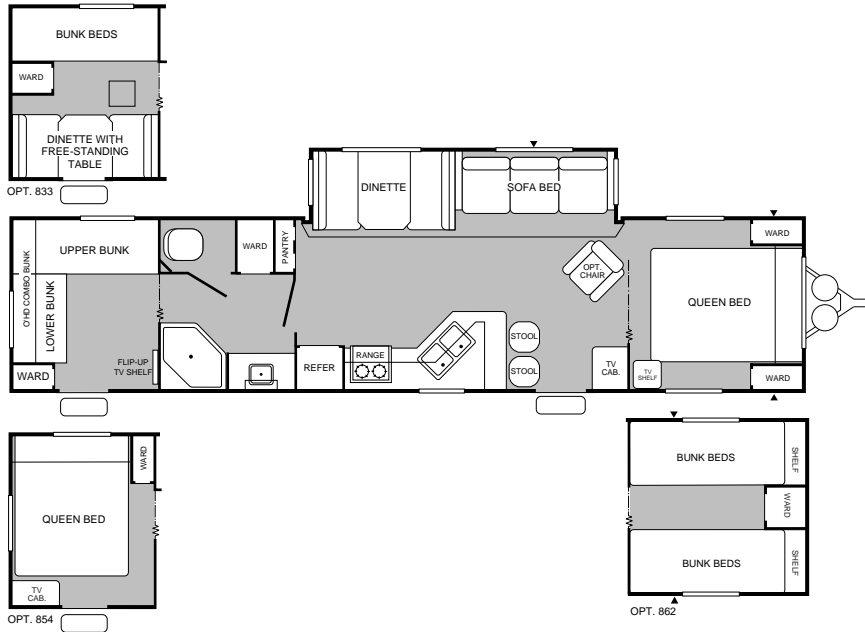
OPT. 862

▲ = Exterior Storage

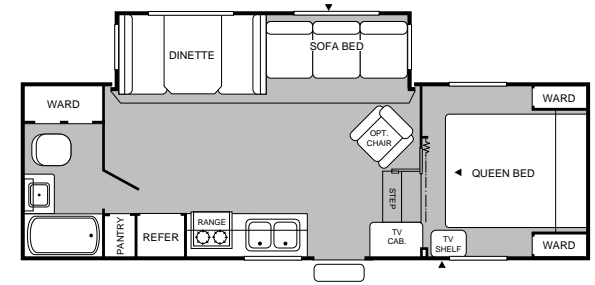
Some models may not be available from all manufacturing plants. Floor plans are subject to change during the model year. Contact your dealer for complete details.



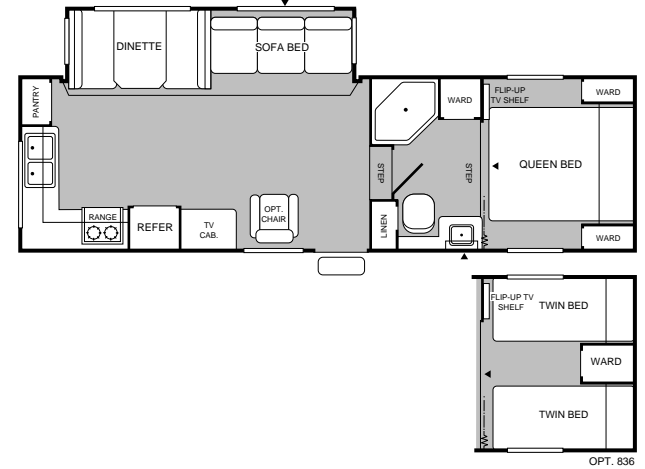
37W



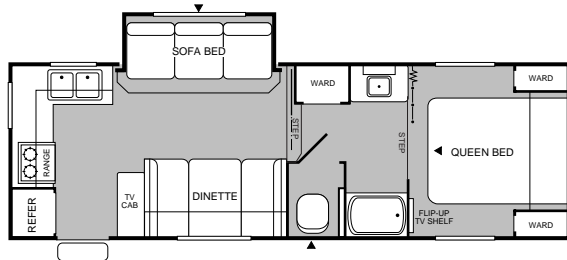
25 5B  
fifth wheel



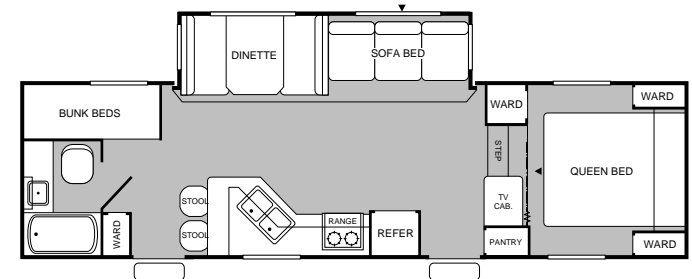
27 5K  
fifth wheel  
**NEW!**



24 5P  
fifth wheel  
**NEW!**



28 5S  
fifth wheel  
**NEW!**



▲ = Exterior Storage

Some models may not be available from all manufacturing plants. Floor plans are subject to change during the model year. Contact your dealer for complete details.

# 1999 TERRY SPECIFICATIONS

## Travel Trailers & Fifth Wheels

TERRY MODELS	<b>19N</b>	<b>24C</b>	<b>24J</b>	<b>26H</b>	<b>26T</b>	<b>27X</b>	<b>29S</b>	<b>31G</b>
GVWR (Gross Vehicle Weight Rating)	5,400	6,300	6,100	7,700	6,800	6,700	7,300	8,600
Gross Dry Weight <sup>1</sup>	3,740	4,440	4,270	5,770	4,790	4,830	5,250	6,420
Carrying Capacity <sup>2</sup>	1,660	1,860	1,830	1,930	2,010	1,870	2,050	2,180
Hitch Dry Weight <sup>1</sup>	400	530	560	610	610	540	590	840
Dry Axle Weight	3,340	3,910	3,710	5,160	4,180	4,290	4,660	5,580
Length <sup>3</sup>	20'6"	25'9"	25'11"	27'7"	28'3"	28'0"	31'0"	31'10"
Width <sup>6</sup>	8'0"	8'0"	8'0"	8'0"	8'0"	8'0"	8'0"	8'0"
Height <sup>4</sup>	8'11"	8'11"	8'11"	9'6"	9'0"	9'0"	9'0"	9'6"
Tires – Size (Radials)	ST205/ 75R 15(B)	ST205/ 75R 15(C)	ST205/ 75R 15(B)	ST205/ 75R 15(C)	ST205/ 75R 15(C)	ST205/ 75R 15(C)	ST205/ 75R 15(C)	ST225/ 75R 15(C)
Fresh Water Tank <sup>5</sup> – gal.	40	40	40	40	40	40	40	40
Gray Water Holding Tank <sup>5</sup> – gal.	40	40	40	40	40	40	40	40
Black Water Holding Tank <sup>5</sup> – gal.	40	40	40	40	40	40	40	40
LPG Capacity – gal.	14	14	14	14	14	14	14	14
Bed Size – Standard	53"x75" Dbl.	53"x75" Dbl.	53"x75" Dbl.	60"x75" Queen	60"x75" Queen	60"x75" Queen	60"x75" Queen	60"x75" Queen
						29"x76" Bunks	29"x76" Bunks	29"x76" Bunks
Bed Size – Option	29"x76" Bunk	29"x76" Bunk	N/A	N/A	32"x75" Twin	N/A	32"x75" Twin	N/A

<b>37E</b>	<b>37W</b>	<b>24 5P</b>	<b>25 5B</b>	<b>27 5K</b>	<b>28 5S</b>
9,900	9,900	7,900	7,900	8,400	9,100
7,480	7,480	6,160	6,110	6,520	7,150
2,420	2,420	1,740	1,790	1,880	1,950
1,080	1,080	1,030	1,140	1,350	1,300
6,400	6,400	5,130	4,970	5,170	5,850
38'4"	38'4"	25'3"	26'6"	28'7"	29'11"
8'0"	8'0"	8'0"	8'0"	8'0"	8'0"
9'6"	9'6"	11'7"	11'7"	11'7"	11'7"
ST225/	ST225/	ST205/	ST205/	ST205/	ST225/
75R 15(D)	75R 15(D)	75R 15(C)	75R 15(C)	75R 15(C)	75R 15(C)
N/A	40	40	40	40	40
40	40	40/2I	40	40	40
40	40	40	40	40	40
I4	I4	I4	I4	I4	I4
60"x80" Queen	60"x80" Queen	60"x75" Queen	60"x75" Queen	60"x75" Queen	60"x75" Queen
29"x76" Bunks	29"x76" Bunks				29"x72" Bunks
32"x75" Twin	32"x75" Twin			32"x75" Twin	



- <sup>1</sup> All dry weights are based on standard model features and do not include optional features or equipment.
- <sup>2</sup> Carrying Capacity is determined by subtracting Gross Dry Weight from GVWR. Carrying Capacity includes all fluids, optional equipment and personal cargo.
- <sup>3</sup> Trailer length includes 3'6" for hitch, 5th wheel includes pin box.
- <sup>4</sup> Add 12" if equipped with optional roof air conditioner.
- <sup>5</sup> Approximate gallons.
- <sup>6</sup> Add 3" for awning.
- N/A = Not available at time of printing.

# 1999 TERRY STANDARD FEATURES

## Travel Trailers & Fifth Wheels

### EXTERIOR

Gloss Exterior Metal Finish  
Construction Steel Channel or Paco I-Beam, Cambered Chassis  
Tandem Axle w/4 Wheel Electric Brakes  
Radial Ply Tires w/White Spoke Wheels  
Rear Bumper w/Sewer Hose Carrier  
Retractable Non-Skid Entry Step  
Locking, Insulated Luggage Doors w/Finger Pulls  
Front Radiused Rockguard Awning (Travel Trailers)  
One-Piece Seamless Roof  
Radius Roof Truss Rafters  
Blanket Fiberglass Insulation  
30" Wide Main Entry Door w/Window  
Flush Combo Entry Latch/Dead Bolt Lock  
Reinforced Screen Door w/Lock Shield & Kick Panel  
Radiused Slider and Torque Windows  
LPG Tank Cover (Travel Trailers)  
Skylight Roof Vents  
Hitch Light  
Wall-Switched Doorside Patio Light  
Welded Dual Battery Rack (Travel Trailers)  
Waste Tank Single Point Termination Valve  
Sonic-Welded, Automotive-Style Clearance Lights  
G.F.I. Protected 120V Duplex Receptacle  
A&E Patio Awning

### INTERIOR

Quality Furniture by Flexsteel®  
Color-Coordinated Designer Interiors  
Oak Raised Panel Cabinet Doors  
Face Frame Cabinet Construction

Overhead Dinette Storage Cabinet (Select Models)  
Box-Wrapped Valance Window Treatment  
Comfortable Innerspring Mattresses  
Decor-Coordinated Bedspread  
Miniblinds Throughout (Except Bunks)

### GALLEY

Double Bowl Stainless Steel Sink  
High Pressure Laminate Countertop  
Overhead Cabinet Microwave Oven  
Overhead Storage Cabinet Above Sink  
Pantry Cabinet (Most Models)  
120V Appliance Receptacle at Countertop

### BATH

Large Lavy Bowl  
Medicine Cabinet w/Mirrored Oak Door  
Fresh Water Flush Toilet  
One-Piece ABS Tub Walls  
12V Power Roof Exhaust Vent  
Shower Curtain  
G.F.I. Protected 120V Duplex Receptacle  
Wall-Switched Ceiling Light

### APPLIANCES/EQUIPMENT

Dometic® Double Door LP/Electric Refrigerator  
Magic Chef® 3-Burner, High-Output Range w/Oven  
Range Hood w/12V Light and Exhaust Fan  
Wall-Mounted Systems Monitor Panel  
Water Heater Bypass  
hydroflame® Forced Air, D.S.I. Furnace w/Thermostat  
In-Floor Rigid Heat Ducting  
In-Ceiling Rigid Air Conditioning Ducting

Dual 7 Gallon LPG Tanks w/Regulator & Auto-Changeover  
Smoke Detector  
Fire Extinguisher  
Freeze-Resistant Water Lines  
LPG Leak Detector

### ELECTRICAL

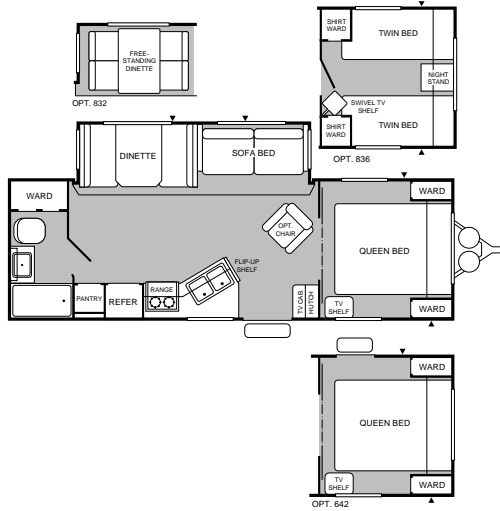
Electronic Converter w/Built-in Battery Charger  
120V Central Electrical Panel  
120V Duplex Receptacles Throughout  
120V Ground Fault Circuit Protection  
120V Patio Receptacle  
Wall-Switched Interior Lights  
TV Antenna  
Prewired for Roof Air Conditioner  
AM/FM Cassette Stereo  
Cable TV Hook-Up

### TERRY POPULAR OPTIONS

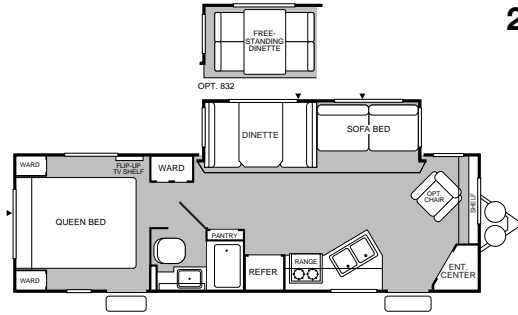
Living Room/Bedroom Carpet  
Coleman® Ducted Central Air Conditioning  
Exterior Shower  
Safety Glass Windows  
Foot Pedal Toilet  
Free-Standing Swivel Rocker  
120V/LP Fast Recovery Water Heater  
Spare Tire  
Radius Luggage Doors  
Radius Entry Door

*Not all models include all features. See your dealer for complete details.*

26H



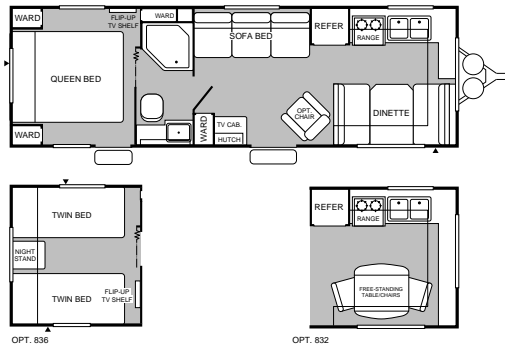
27F  
NEW!



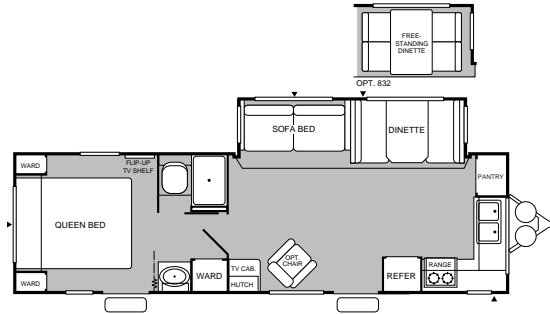
29S



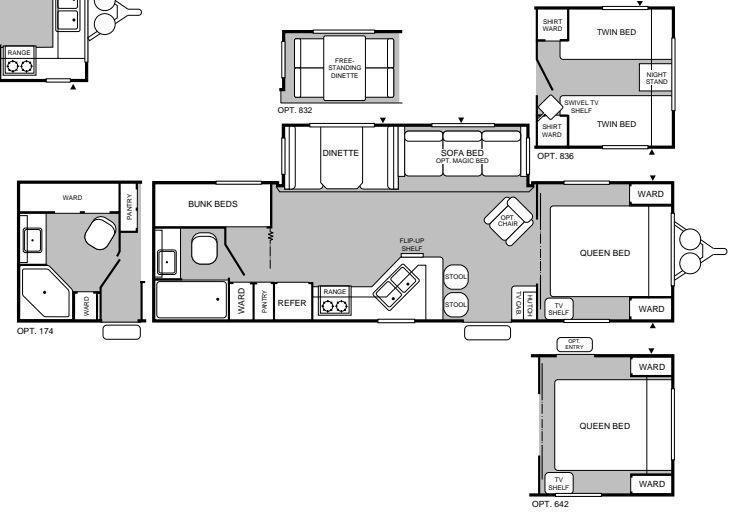
26T



29B



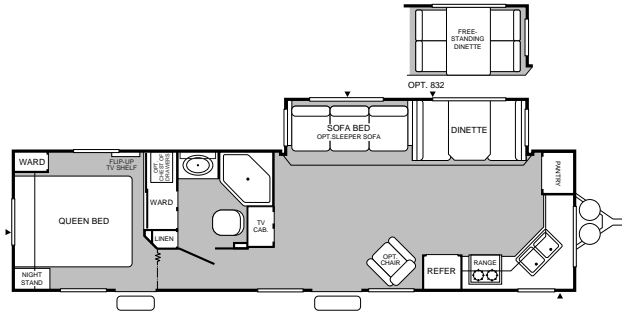
31G



▲ = Exterior Storage

Some models may not be available from all manufacturing plants. Floor plans are subject to change during the model year. Contact your dealer for complete details.

**33P**



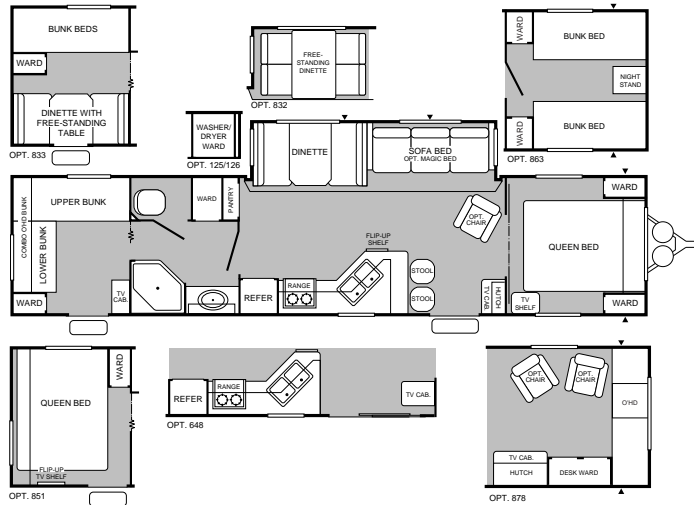
**27 5J**  
*fifth wheel*



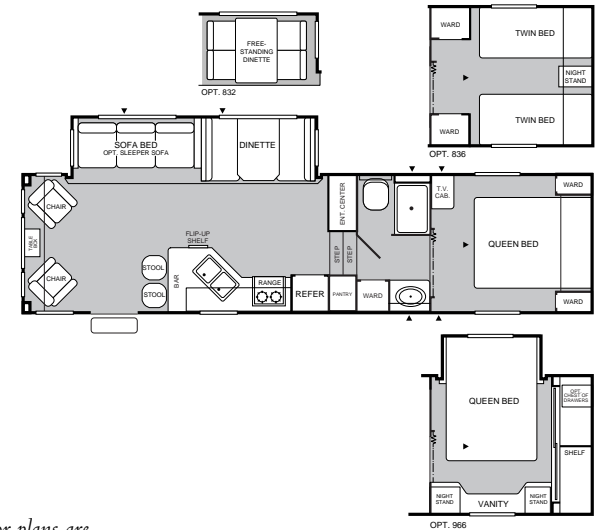
**26 5E**  
*fifth wheel*



**37W**



**30 5G**  
*fifth wheel*



▲ = Exterior Storage

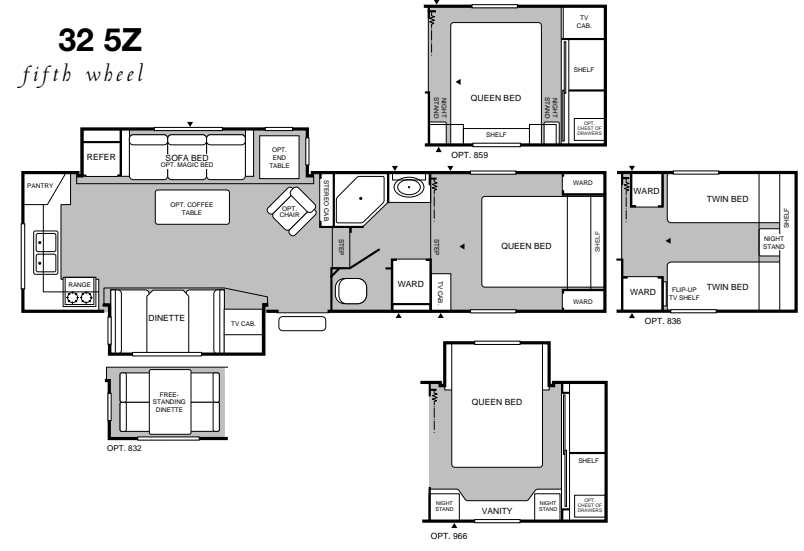
Some models may not be available from all manufacturing plants. Floor plans are subject to change during the model year. Contact your dealer for complete details.



**30 5X**  
*fifth wheel*



**32 5Z**  
*fifth wheel*



**31 5R**  
*fifth wheel*



**34 5B**  
*fifth wheel*



▲ = Exterior Storage

Some models may not be available from all manufacturing plants. Floor plans are subject to change during the model year. Contact your dealer for complete details.

# 1999 TERRY EX SPECIFICATIONS

## *Travel Trailers & Fifth Wheels*

TERRY EX MODELS	26H	26T	27F	29B	29S	31G	33P	37W
GVWR (Gross Vehicle Weight Rating)	8,300	7,300	8,600	8,800	8,000	9,200	9,700	10,700
Gross Dry Weight <sup>1</sup>	6,180	5,200	6,430	6,610	5,830	6,780	7,200	7,810
Carrying Capacity <sup>2</sup>	2,120	2,100	2,170	2,190	2,170	2,420	2,500	2,890
Hitch Dry Weight <sup>1</sup>	670	660	885	940	630	890	940	1,110
Dry Axle Weight	5,570	4,540	5,543	5,670	5,200	5,890	6,260	6,700
Length	27'8" <sup>3</sup>	28'2" <sup>3</sup>	28'11"	30'2"	31'0" <sup>3</sup>	31'10" <sup>3</sup>	34'3" <sup>3</sup>	38'4" <sup>3</sup>
Width	8'0"	8'0"	8'0"	8'0"	8'0"	8'0"	8'0"	8'0"
Height <sup>4</sup>	9'6"	9'0"	9'6"	9'6"	9'0"	9'6"	9'6"	9'6"
Tires – Size (Radials)	ST225/ 75R 15(C)	ST205/ 75R 15(C)	ST225/ 75R 15(C)	ST225/ 75R 15(C)	ST225/ 75R 15(C)	ST225/ 75R 15(C)	ST225/ 75R 15(D)	ST205/ 75R 15(D)
Fresh Water Tank <sup>5</sup> – gal.	40	40	40	40	40	40	40	40
Gray Water Holding Tank <sup>5</sup> – gal.	40	40	40	40/2I	40	40	40/2I	40
Black Water Holding Tank <sup>5</sup> – gal.	40	40	40	40	40	40	40	40
LPG Capacity – gal.	14	14	14	14	14	14	14	14
Bed Size – Standard	60"x75" Queen	60"x75" Queen	60"x75" Queen	60"x75" Queen	60"x75" Queen	60"x75" Queen	60"x75" Queen	60"x80" Queen
					29"x76" Bunks	29"x76" Bunks		29"x76" Bunks
Bed Size – Option	32"x75" Twin	32"x75" Twin			32"x75" Twin			32"x75" Twin

26 5E	27 5J	30 5G	30 5X	31 5R	32 5Z	34 5B
9,000	9,000	10,900	10,800	11,400	12,400	13,500
6,730 <sup>6</sup>	6,850	7,945	7,860 <sup>6</sup>	8,550 <sup>6</sup>	8,800 <sup>6</sup>	9,650 <sup>6</sup>
2,270	2,150	2,955	2,940	2,850	3,600	3,850
1,200	1,130	1,550	1,550	1,860	1,700	1,930
5,530	5,720	6,395	6,310	6,690	7,100	7,720
27'1"	27'10"	31'1"	31'4"	33'0"	32'7"	35'5"
8'0"	8'0"	8'0"	8'0"	8'0"	8'0"	8'0"
11'0"	11'7"	11'5"	11'5"	11'8"	11'7"	11'9"
ST225/ 75R 15(C)	ST225/ 75R 15(C)	ST225/ 75R 15(D)	ST225/ 75R 15(C)	ST225/ 75R 15(D)	ST225/ 75R 15(D)	ST235/ 85R 16(E)
40	40	50	50	40	50	50
40/2I	40/2I	40	40/2I	40	40/30	40/2I
40	40	40	40	40	40	40
I4	I4	I4	I4	I4	I4	I4
60"x80" Queen	60"x75" Queen	60"x80" Queen	60"x80" Queen	60"x75" Queen	60"x80" Queen	60"x75" Queen
32"x75" Twin	32"x75" Twin	32"x75" Twin	32"x75" Twin	60"x80" Queen	32"x75" Twin	32"x75" Twin



<sup>1</sup> All dry weights are based on standard model features and do not include optional features or equipment.

<sup>2</sup> Carrying Capacity is determined by subtracting Gross Dry Weight from GVWR. Carrying Capacity includes all fluids, optional equipment and personal cargo.

<sup>3</sup> Includes 3'6" for hitch.

<sup>4</sup> Add 12" if equipped with optional roof air conditioner.

<sup>5</sup> Approximate gallons.

<sup>6</sup> Add 400 lbs. for optional bedroom slide-out.

# 1999 TERRY EX STANDARD FEATURES

## Travel Trailers & Fifth Wheels

### EXTERIOR

Smooth Fiberglass Sidewalls  
Construction Steel Channel, or I-Beam Cambered Chassis  
Prewired for DSS Satellite  
Tandem Axle w/4 Wheel Electric Brakes  
Radial Ply Tires w/ White Spoke Wheels  
Powder Coated Rear Bumper w/ Sewer Hose Carrier  
Retractable Non-Skid Double or Triple Entry Step  
Radius Locking, Insulated Luggage Doors w/ Finger Pulls  
Front Radiused Rockguard Awning (Travel Trailers)  
One-Piece Seamless Rubber Roof  
Engineered Radius Roof Truss Rafters  
R-7 Blanket Fiberglass Insulation  
30" Wide Main Entry Door w/ Window  
Flush Combo Entry Latch/Dead Bolt Lock  
Reinforced Screen Door w/ Lock Shield & Kick Panel  
Smoke Tint White Framed Compression Style Windows  
LPG Tank Cover (Travel Trailers)  
Skylight Roof Vents  
A&E Patio Awning  
Convenience Lighting - Hitch and Roadside Utility  
Wall-Switched, Doorside Patio Light  
Welded, Dual Battery Rack (Travel Trailers)  
Waste Tank Single Point Termination Valve  
Sonic-Welded, Automotive-Style Clearance Lights  
G.F.I. Protected 120V Duplex Receptacle

### INTERIOR

Quality Furniture by Flexsteel®  
Color-Coordinated Designer Interiors  
Oak Frame Cabinet Doors w/ Oak Raised Inserts  
Face Frame Cabinet Construction  
Overhead Dinette Storage Cabinet (Select Models)

Box-Wrapped Valance Window Treatment w/ Privacy Lambrequins  
Living Area & Bedroom Carpet w/ Foam Padding  
Comfortable Innerspring Mattresses  
Decor-Coordinated Bedspread w/ Reversible Sham  
Wall-Mounted 120V Decor Lights  
Wainscot Molding  
Miniblinds Throughout  
Curtains in Bunk Areas

### GALLEY

Double Bowl Porcelain Sink  
Single Lever Residential Faucet  
High Pressure Laminate Countertop  
Overhead Storage Cabinet Above Sink  
Pantry Cabinet w/ Removable Shelves (Most Models)  
120V Appliance Receptacle at Countertop  
Spice Shelf  
Large Pot/Pan Drawer (Most Models)  
Knife Block

### BATH

Large Lavy Bowl  
Medicine Cabinet w/ Mirrored Oak Door  
Foot Operated Fresh Water Flush Toilet  
One-Piece ABS Tub Walls  
12V Power Roof Exhaust Vent  
Shower Curtain w/ Tie Back  
G.F.I. Protected 120V Duplex Receptacle  
Wall-Switched Ceiling Light  
Skylight in Tub/Shower

### APPLIANCES/EQUIPMENT

Electronic Microwave Oven w/ Turntable  
Dometic® Double Door LP/Electric Refrigerator  
Magic Chef® 3-Burner, High-Output Range w/ Oven

Range Hood w/12V Light and Exhaust Fan  
Wall-Mounted Systems Monitor Panel  
LP/D.S.I. Fast Recovery Water Heater, 6 Gal.  
Water Heater Bypass  
hydroflame® Forced Air, D.S.I. Furnace w/ Thermostat  
In-Floor Rigid Heat Ducting  
In-Ceiling Rigid Air Conditioning Ducting  
Dual 7 Gallon LPG Tanks w/ Regulator & Auto-Changeover  
Smoke Detector  
Fire Extinguisher  
TV Antenna  
Freeze-Resistant Water Lines  
LPG Leak Detector

### ELECTRICAL

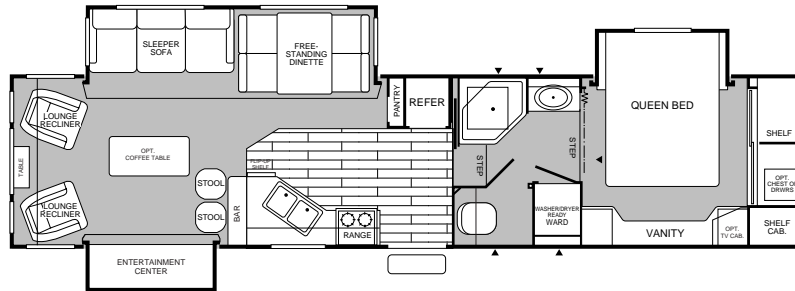
Electronic Converter w/ Built-in Battery Charger  
120V Central Electrical Panel  
120V Duplex Receptacles Throughout  
120V Ground Fault Circuit Protection  
120V Patio Receptacle  
Wall-Switched Interior Lights  
Prewired for Roof Air Conditioner  
AM/FM Cassette Stereo  
Cable TV Hook-Up  
12V Power Jack (Fifth Wheels Only)

### TERRY POPULAR OPTIONS

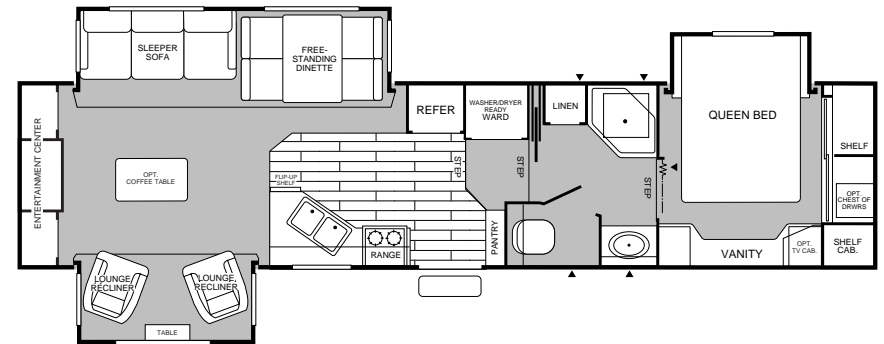
Coleman® Central Air Conditioning (Duct is Standard)  
Free-Standing Swivel Rocker  
Plank Flooring  
120V/LP/D.S.I. Fast Recovery Water Heater  
Spare Tire  
AM/FM CD Player  
*Not all models include all features. See your dealer for complete details.*

**ALL NEW MODELS!**

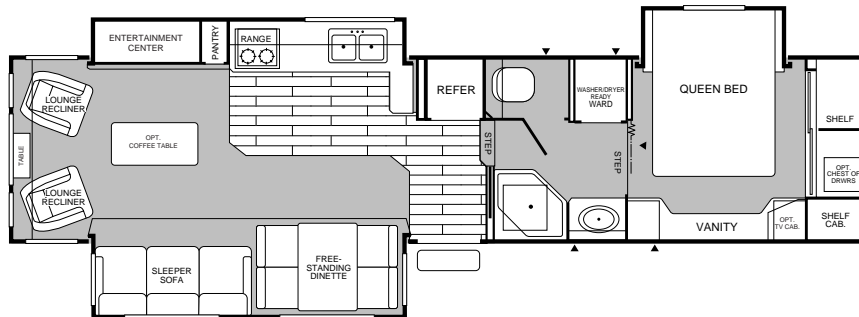
**34 5B**  
*fifth wheel*



**35 5Y**  
*fifth wheel*



**34 5L**  
*fifth wheel*



▲ = Exterior Storage

Some models may not be available from all manufacturing plants. Floor plans are subject to change during the model year. Contact your dealer for complete details.

# 1999 TERRY EXL SPECIFICATIONS

## Travel Trailers & Fifth Wheels

TERRY EXL MODELS	34 5B	34 5L	35 5Y
GVWR (Gross Vehicle Weight Rating)	13,400	13,600	13,500
Gross Dry Weight <sup>1</sup>	10,350	10,550	10,430
Carrying Capacity <sup>2</sup>	3,050	3,050	3,070
Hitch Dry Weight <sup>1</sup>	2,190	2,030	2,160
Dry Axle Weight	8,160	8,520	8,270
Length	35'11"	35'10"	36'2"
Width	8'0"	8'0"	8'0"
Height <sup>3</sup>	12'6"	12'6"	12'6"
Tires – Size (Radials)	LT235/85R 16(E)	LT235/85R 16(E)	LT235/85R 16(E)
Fresh Water Tank <sup>4</sup> – gal.	60	60	60
Gray Water Holding Tank <sup>4</sup> – gal.	40/21	40	40
Black Water Holding Tank <sup>4</sup> – gal.	40	40	40
LPG Capacity – gal.	14	14	14
Bed Size – Standard	60"x80" Queen	60"x80" Queen	60"x80" Queen

<sup>1</sup> All dry weights are based on standard model features and do not include optional features or equipment.

<sup>2</sup> To determine carrying capacity, subtract Gross Dry Weight from GVWR. Carrying capacity includes all fluid, optional equipment and personal cargo.

<sup>3</sup> Add 12" if equipped with optional air conditioner.

<sup>4</sup> All liquid capacities are approximate.

<sup>5</sup> Includes 3'6" for hitch.

N/A = Not available at time of printing.

# 1999 TERRY EXL STANDARD FEATURES

## Travel Trailers & Fifth Wheels

### EXTERIOR

Smooth Fiberglass Exterior Sidewalls  
Fiberglass Front Cap  
Aluminum Frame Construction  
Tufcap® Fiberglass Rear  
Dual Battery Compartment (Enclosed)  
Integrated Tail Lights  
One-Piece Rubber Roof  
Blanket Fiberglass Insulation  
30" Wide Radiused Main Entry Door  
Flush Mount, Combo Entry Latch/Dead Bolt Lock  
Potable Water Fill  
Convenience Lighting – Hitch/LP Tanks/Roadside  
High Strength Welded Paco I-Beam, Cambered Chassis  
Exterior Shower  
Radial Ply Tires w/ White Spoke Wheels  
Polyethylene Wheel Well Skirts  
Non-Skid, Retractable, Triple Entry Steps  
Locking, Insulated, Radiused Luggage Doors w/ Finger Pulls  
Tandem Axle w/4 Wheel Electric Brakes  
Large, Solar-Reflective White-Framed Radiused Windows (Torque & Slider)  
12V Power Jack (Fifth Wheels Only)  
Roof Rack and Ladder  
Shock Absorbers  
In-Chassis Spare Tire Carrier  
Pass Through Exterior Storage  
Large Super Slide-Out Living Area  
Bedroom Slide-Out w/ Vanity (some models)  
Fully Enclosed, Heated Holding Tanks w/ Remote Valve  
Power Landing Gear  
A&E Patio Awning

### INTERIOR

2 Color-Coordinated Decors  
Full Face Frame Cabinetry  
Oak Framed Cabinet Doors w/ Oak Raised Inserts

Deluxe Carpet w/ Foam Pad in Living Room and Bedroom  
Upgraded Innerspring Mattress  
Bed Top Lift Mechanism to Storage Area (Queen & Double Beds)  
Oak Dinette Table w/4 Chairs  
Quality Flexsteel® Sleeper Sofa  
Free-Standing Lounge Recliner (2)  
Decor Wall Border w/ Wainscot Molding  
Color-Coordinated Bedspread w/ Pillow Shams  
120V Wall Mount Decor Lights in Living Area  
120V Ceiling Light at Dinette  
Designer Window Treatments  
Color-Coordinated Miniblinds  
Adjustable Reading Lights Over Beds  
Magazine Rack  
Knife Rack  
Plank Wood Flooring in Entry

### APPLIANCES/EQUIPMENT

Large Dometic® Double Door LP/Elect. Refrigerator  
Raised Panel Refrigerator Insert  
Deluxe Sealed 3-Burner, High-Output Range w/ Oven  
Range Hood w/ Light and Exhaust Fan  
Wall-Mounted Systems Monitor Panel  
LP/120V D.S.I. Water Heater – 10 Gal.  
hydroflame® D.S.I. Furnace w/ Thermostat  
In-Floor Rigid Heat Ducting  
In-Ceiling Rigid Air Conditioning Ducting  
Deluxe Residential AM/FM Stereo CD Player w/ 4 Speakers  
Park Cable TV Hook-Up Connection  
Dual 7 Gal. LPG Tanks w/ Sight Gauge & Auto Changeover  
Electronic Microwave Oven w/ Turntable  
Smoke Detector  
Fire Extinguisher  
TV Antenna  
Satellite Dish Ready  
Phone Jack  
Washer/Dryer Ready (Most Models)

### GALLEY

Double Bowl White Porcelain Sink w/ Cutting Board Cover  
Upgrade High Rise Dual Handle Faucet  
High Pressure Laminate Countertop w/ Beveled Edging  
Spice Tray  
Plank Wood Flooring  
Knife Block

### BATH

Large Medicine Cabinet w/ Mirrored Door  
One Piece ABS Tub/Shower Walls  
Glass Tub Enclosure  
Bath Skylight  
12V Power Roof Exhaust Vent  
Fresh Water, Foot-Operated Flush Toilet  
Wall-Switched Ceiling Light  
3-Bulb Vanity Light

### ELECTRICAL

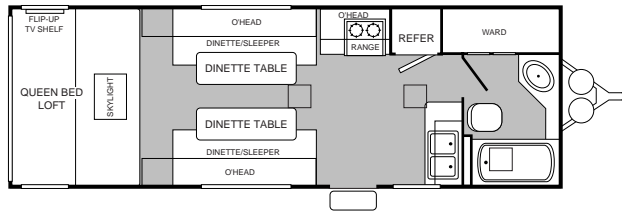
40 Amp, 12V All Electronic Converter w/ Battery Charger  
120V Central Electrical Panel  
120V Receptacles Throughout  
120V Ground Fault Circuit Protection  
120V Patio Receptacle  
Wall-Switched Interior Lights  
Reading Lights  
Fluorescent Lights (Galley & Bedroom)  
Electric Slide-Outs  
**POPULAR OPTIONS**  
Coleman® Central Air Conditioning (Duct is Standard)  
Generator Ready  
Slide-Out Topper Awning  
Double Insulation In-Ceiling and Floor  
Full Entertainment Center w/ TV, VCR & CD Player w/ Changer  
Day/Night Shades Throughout  
Smooth High Gloss Gel Coat Fiberglass Exterior Sidewalls

*Not all models include all features. See your dealer for complete details.*

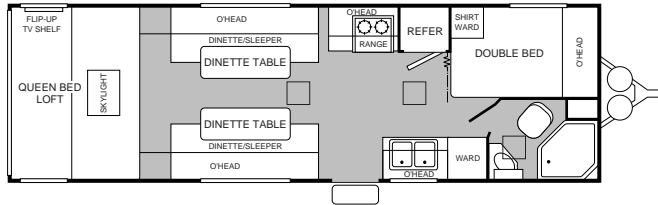


# 1999 SPORT UTILITY TRAILER FLOOR PLANS & SPECIFICATIONS

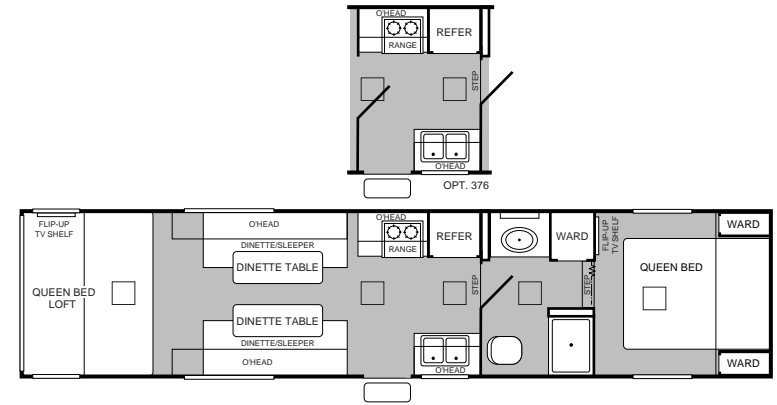
**24B**



**26A**



**33 5G**  
*fifth wheel*



⇒ = Fold Down Rear Door.

Some models may not be available from all manufacturing plants. Floor plans are subject to change during the model year. Contact your dealer for complete details.

## TERRY SUT MODELS

	<b>24B</b>	<b>26A</b>	<b>33 5G</b>
GVWR (Gross Vehicle Weight Rating)	9,500	9,600	11,600
Gross Dry Weight <sup>1</sup>	6,010	6,150	7,480
Carrying Capacity (Dry)	3,490	3,450	4,120
Hitch Dry Weight <sup>1</sup>	820	920	1,850
Dry Axle Weight	5,190	5,230	5,630
Overall Length <sup>2</sup>	27'11"	29'7"	33'7"
Body Length	24'6"	26'2"	33'7"
Width	8'5"	8'5"	8'5"
Height	10'9"	10'9"	11'1"
Frame Clearance	18"	18"	18"
Tires – Size (Radials)	ST225/75R 15(C)	ST225/75R 15(C)	ST225/75R 15(D)
Fresh Water Tank – gal.	50	50	50
Gray Water Holding Tank – gal.	40	40	40
Black Water Holding Tank – gal.	40	40	40
Appliance LPG Capacity – gal.	14	14	14
Bed Size – Standard	76"x38" Dinette/Sleeper	78"x49" Dbl.	80"x60" Queen
	93"x60" Queen Loft	76"x38" Dinette/Sleeper	76"x38" Dinette/Sleeper
		93"x60" Queen Loft	93"x60" Queen Loft

<sup>1</sup> All dry weights are based on standard model features and do not include optional features or equipment.

<sup>2</sup> Includes 2'6" for hitch.<sup>2</sup> Includes 2'6" for hitch.



# 1999 TERRY SPORT UTILITY TRAILER STANDARD FEATURES

## **EXTERIOR**

Gloss Exterior Metal Finish  
Construction Steel Channel, Cambered Chassis  
Tandem Axle w/4 Wheel Electric Brakes  
Radial Ply Tires w/ White Spoke Wheels  
Retractable Non-Skid Entry Step  
Locking, Insulated Luggage Doors w/ Finger Pulls  
One Piece Seamless Roof  
Blanket Fiberglass Insulation  
24" Wide Entry Door w/ Window  
Flush Combo Entry Latch / Dead Bolt Lock  
Reinforced Screen Door w/ Lock Shield & Kick Panel  
Radiused Slider and Torque Windows  
Skylight Roof Vents  
Hitch and Roadside Utility Lights  
Wall-Switched Doorside and Rear Patio Lights  
Welded Dual Battery Rack (A&B Models Only)  
Waste Tank Single Point Termination Jack  
Sonic-Welded, Automotive-Style Clearance Lights  
G.F.I. Protected 120V Duplex Receptacle  
Exterior Shower  
Large Ramp Door  
Roof Rack & Ladder  
**INTERIOR**  
Cargo Bay  
(8) Load Tie Downs  
Color-Coordinated Designer Interiors

Oak Frame Cabinet Doors  
Face Frame Cabinet Construction  
Overhead Dinette Storage Cabinets  
Sock Valances w/ Curtain End Panel  
Pullshades and /or Miniblinds Throughout  
Comfortable Innerspring Mattress  
Separate Sleeping Areas  
Queen Size Bed Loft

## **ELECTRICAL**

4.8 KW Generator Ready w/25 Gal. Gas Tank (A&B Models Only)  
Electronic Converter w/ Built-In Battery Charger  
120V Central Electric Panel  
120V Duplex Receptacles Throughout  
120V Ground Fault Circuit Protection  
120V Patio Receptacle  
Wall-Switched Interior Lights

## **APPLIANCES/EQUIPMENT**

Dometic® Double Door LP/Electric Refrigerator  
Magic Chef® Three-Burner High Output Range w/ Oven  
Range Hood w/12V Light and Exhaust Fan  
Wall-Mounted Systems Monitor Panel  
hydroflame® Forced Air, D.S.I. Furnace w/ Thermostat  
Safety Package: Smoke, LPG Gas, & CO Detectors  
Dual 7 Gal. LPG Tanks w/ Regulator & Auto-Changeover  
Fire Extinguisher – 10 BC  
50 Gallon Fresh Water Tank  
Stereo - AM/FM Cassette 12V w/ Speakers

TV Antenna w/ Park Antenna Receptacle

## **GALLEY**

Double Bowl Stainless Steel Sink  
High Pressure Laminate Countertop  
Overhead Cabinet Microwave Oven  
Overhead Storage Cabinet Above Sink  
120V Appliance Receptacle at Countertop

## **BATH**

Fresh Water Flush Toilet  
12V Power Roof Exhaust Vent  
Shower Curtain  
G.F.I. Protected 120V Duplex Receptacle

## **SUT POPULAR OPTIONS**

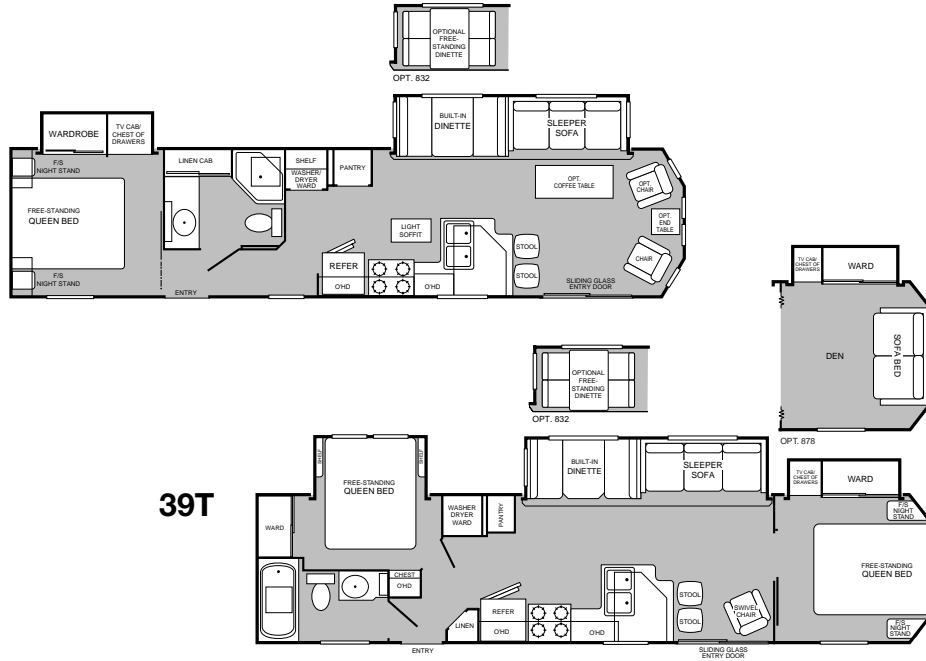
12V Power Jack (A&B Models Only)  
Stereo – AM/FM CD 12V w/ Speakers  
A/C 13M BTU  
15 ft. Awning  
4.8 KW Generac® Generator  
Exterior Flood Lights (Fifth Wheel Only)  
50 Gallon Additional Fresh Water Tank  
Spare Radial Tire  
Shock Absorbers (Fifth Wheel Only)  
Ramp Door w/ Diamond Plate  
Ramp Door w/ Non Skid Surface  
Screen Partition for Rear Door Opening  
Ceiling Fan (Fifth Wheel Only)

*Not all models include all features. See your dealer for complete details.*

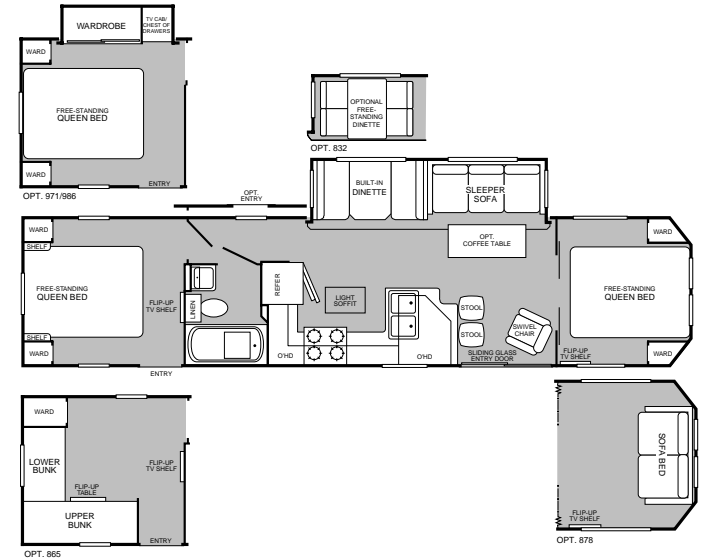


# 1999 PARK TRAILER FLOOR PLANS & SPECIFICATIONS

**39F**



**39W**



Some models may not be available from all manufacturing plants. Floor plans are subject to change during the model year. Terry Park trailers are covered by full one year warranty. Contact your dealer for complete details.

TERRY PARK TRAILER MODELS	<b>39F</b>	<b>39T</b>	<b>39W</b>
GVWR (Gross Vehicle Weight Rating)	11,000	11,000	10,800
Gross Dry Weight <sup>1</sup>	8,380	8,760	8,440
Hitch Dry Weight <sup>1</sup>	840	970	960
Overall Length <sup>2</sup>	39'10"	39'10"	39'10"
Body Length	37'3"	37'3"	37'3"
Width	8'6"	8'6"	8'6"
Height <sup>3</sup>	10'2"	10'2"	10'2"
Tires – Size (Radials)	ST225/75R 15	ST225/75R 15	ST225/75R 15
Tire Load Range	D	D	D
Appliance LPG Capacity – gal.	20 (opt.)	20 (opt.)	20 (opt.)
Bed Size – Standard	60"x80" Queen	60"x75" Queen	60"x80" Queen
Bed Size – Option	N/A	N/A	54"x75" Dbl.

<sup>1</sup> All dry weights are based on standard model features and do not include optional features or equipment.

<sup>2</sup> Includes 2'6" for hitch.

<sup>3</sup> Add 12" if equipped with optional roof air conditioner.

# 1999 TERRY PARK TRAILER STANDARD FEATURES

## **EXTERIOR**

Gloss Exterior Metal Finish  
One-Piece Seamless Roof  
Skylight Roof Vents  
Power Bath Vent  
Flush Floor Slide-Out Rooms  
Square Verticle Slider Windows  
Bay Front Windows  
Flush Latch/Dead Bolt on Second or Hinged Entry Door  
60"x76" Sliding Glass Patio Door

## **INTERIOR**

Washer/Dryer Ready (F&T Models Only)  
Double Bowl Porcelain Galley Sink  
Residential Toilet  
Miniblinds Throughout  
Built-in Spice Shelf  
Brass Towel Bar  
Glass Shower Doors  
ABS Tub Walls  
Patio Door Vertical Blind  
Sliding, Mirrored Wardrobe Doors  
Carpet w/ Foam Pad (Living Room & Bedroom)  
Heavy Duty Vinyl Flooring  
In-Floor Ducted Heating  
A/C Ready w/ In-Ceiling Ducting

Skylight – Bath  
Ceiling Fan Ready  
Sleeper Sofa  
Free Standing Chair (1)  
Standard Oak Cabinet Doors

## **APPLIANCES/EQUIPMENT**

15 cu. ft. Residential Magic Chef® Refrigerator  
Magic Chef® 4-Burner, Free-Standing Range  
Range Hood with Light & Fan  
0.9 cu. ft. Electronic Touch Samsung® Microwave w/ Turntable  
120V LP Furnace with Thermostat  
10 Gal. LP/120V Water Heater  
Fire Extinguisher  
Smoke Detector  
LPG Leak Detector  
Phone Jacks  
TV Antenna w/ Booster  
AM/FM Stereo Cassette w/4 Speakers

## **ELECTRICAL**

50-Amp Electrical Service  
120V G.F.I. Receptacles in Galley and Bath  
Slide-Out w/ Wall-Switched Ceiling Lights and Decor Lights  
Cable TV Hook-Up  
TV Antenna  
Patio Light & Exterior G.F.I. Receptacle

Pre-wired for Digital Satellite System  
Dinette Hanging Lamp

## **PARK TRAILER POPULAR OPTIONS**

Stabilizing Jacks  
Awning  
Exterior Shower  
Marine Toilet w/ Holding Tanks  
Dual 10 Gallon LP Tanks  
Platform or Retractable Entry Step  
Ice Maker  
Washer/Dryer (F&T Models Only)  
19 Gallon Electric Water Heater  
30-Amp Electrical Service  
Safety Glass Windows  
Storm Windows  
Thermopane Patio Door  
Plank Flooring  
Ceiling Fan(s)  
Air Conditioner – 15M BTU  
Lounge Recliner  
Coffee Table  
AM/FM CD Stereo w/4 Speakers  
Crank Out Slide-Out  
Raised Floor Slide-Outs  
*Not all models include all features. See your dealer for complete details.*



### **Genuine Customer Support**

Fleetwood is committed in every way to making your Terry the best RV you've ever owned, starting with a quality RV, then treating you as a valued customer. Terry owners look forward to:

### **New 2 Year Full Warranty**

Fleetwood's comprehensive 2 year full warranty and service program, OwnerCare, means Fleetwood is committed to total customer satisfaction. It's one of the most comprehensive warranty and service programs in the industry. It provides total coverage on the construction, systems and appliances in your RV, with no deductible and no service charge.

*Park trailer has full one year warranty. See dealer for details.*

### **Excellent Customer Satisfaction**

According to an ongoing independent survey by a nationally known research firm, more than nine out of 10 Fleetwood RV owners would recommend Fleetwood to their friends and relatives. We are dedicated to the most comprehensive Quality Control Program in the industry. We will even contact you after you've purchased to make sure you're completely satisfied.

### **24-hours-a-day Roadside Assistance**

When you purchase a new 1999 Terry Travel Trailer or Fifth Wheel, you'll receive free RV Emergency Road Service for one year. You can call any time, 24-hours-a-day, and receive free towing, lockout assistance or help changing a flat tire. Complimentary roadside assistance is just one more reason why you can be sure your vacation is filled with more fun and less hassles, whether you're traveling through the US or Canada. Ask your Fleetwood dealer for all the details.



### **The Fleetwood RV Racing Story**

Fleetwood RV is a proud sponsor of Winston Cup driver Dale Jarrett and Robert Yates Racing. It's a winning combination that makes it easier than ever to capture all the excitement of racing. As the Official Recreational Vehicle of California Speedway, Daytona

International Speedway, Phoenix International Raceway and Talladega Superspeedway, look for Fleetwood RV at these tracks to enhance your RV experience on race day.

### **IMPORTANT – PLEASE READ:**

*Product information included in this brochure was as accurate as possible at the time of publication. Subsequent refinements may be evident in the actual product. Prices and specifications are subject to change without notice. All liquid capacities are approximate and dimensions are nominal. Some models may not be available from all manufacturing plants. Floor plans are subject to change during the model year. Contact your dealer for complete details.*

© 1998 Fleetwood Enterprises, Inc.  
Litho in USA  
12/98  
Second Edition  
Inventory Control No. 419902

Fleetwood Enterprises, Inc.  
P.O. Box 2875  
Van Nuys, CA 91404-2875

Dear Friend,



Here at Fleetwood RV, we have more than 200 people working on research and development. But we get our best ideas when we hit the road in our recreational vehicles. Talking to people like you and noticing for ourselves little ways to make RVing more comfortable, more convenient and more fun.

If I had two pieces of free advice to give a friend in the market for a recreational vehicle, the first would be to get a Fleetwood RV. Not because we need to sell one more. Heck, we sell more than anyone else. But because I know we build the best product out there for the money.

Second, really think about your dealer. He has to be someone you trust for advice, service and accessories. Only the best get to be Fleetwood dealers in the first place. Then we work with them to continually improve customer satisfaction. That's why nine out of 10 owners would recommend their Fleetwood RV to a friend, and nine out of 10 would also recommend their Fleetwood RV dealer.

I hope that helps. And I also hope I see you out there, somewhere in this beautiful world, enjoying your new Fleetwood RV while I'm out there doing the same.

Sincerely,

John C. Crean

Chairman Emeritus and Founder  
Fleetwood Enterprises, Inc.

Your local Terry dealer is:

If your local dealer is not indicated, write to the address below,  
call us toll-free 24-hours-a-day at

1-800-444-4905

or visit our website at [www.fleetwood.com](http://www.fleetwood.com)



*America's Favorite Recreational Vehicles*