



PROVIDENCE-Floor Plans, Standard Features and Options

Providence



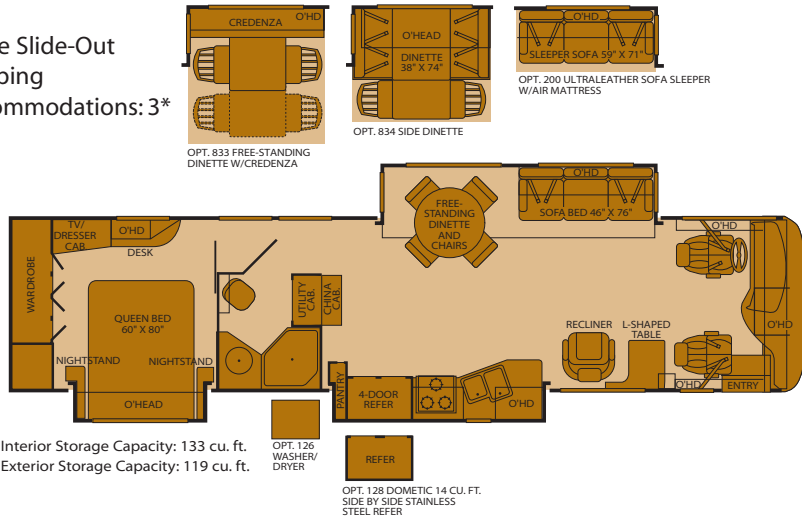
PROVIDENCE-Class A Diesel-2006

350HP

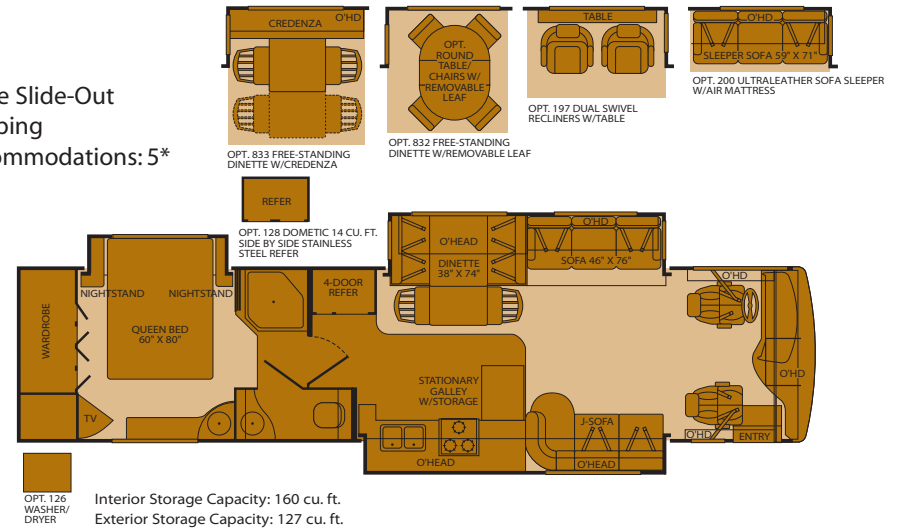


Floor Plans

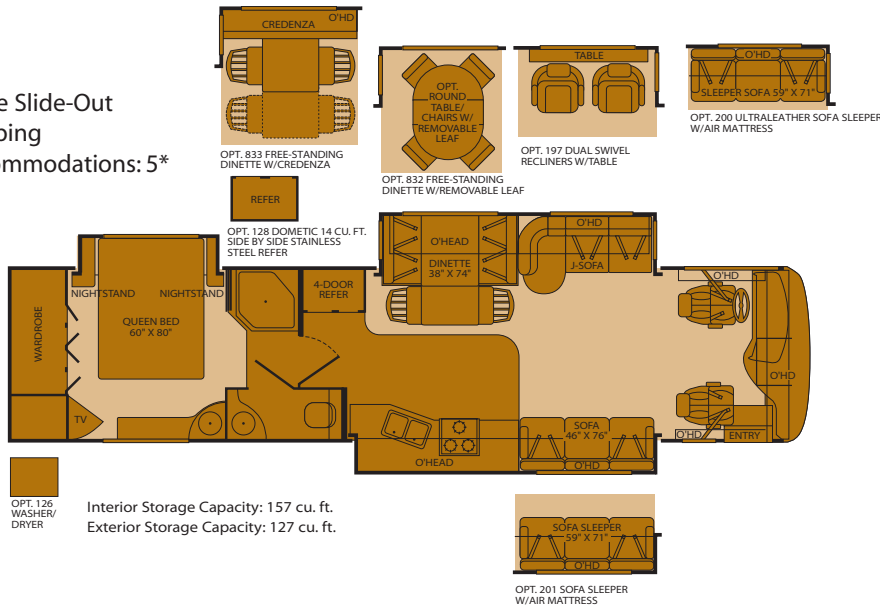
39C
Triple Slide-Out
Sleeping
Accommodations: 3*



39J
Triple Slide-Out
Sleeping
Accommodations: 5*

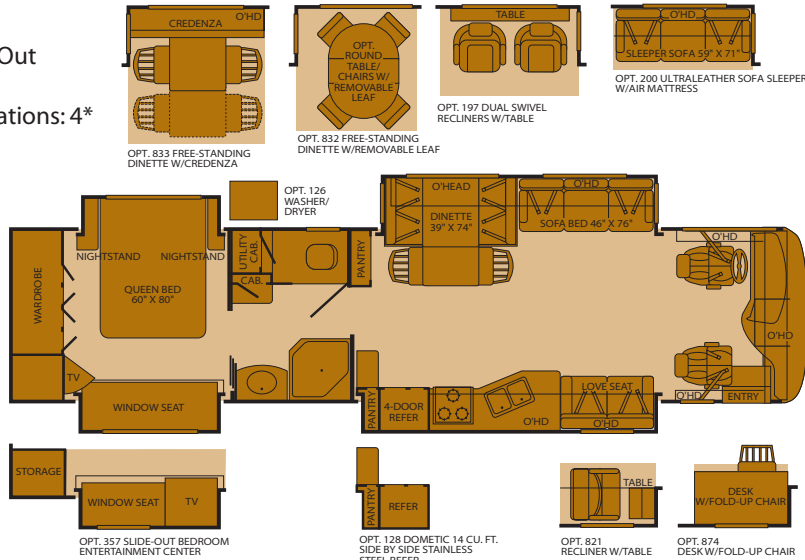


39S
Triple Slide-Out
Sleeping
Accommodations: 5*



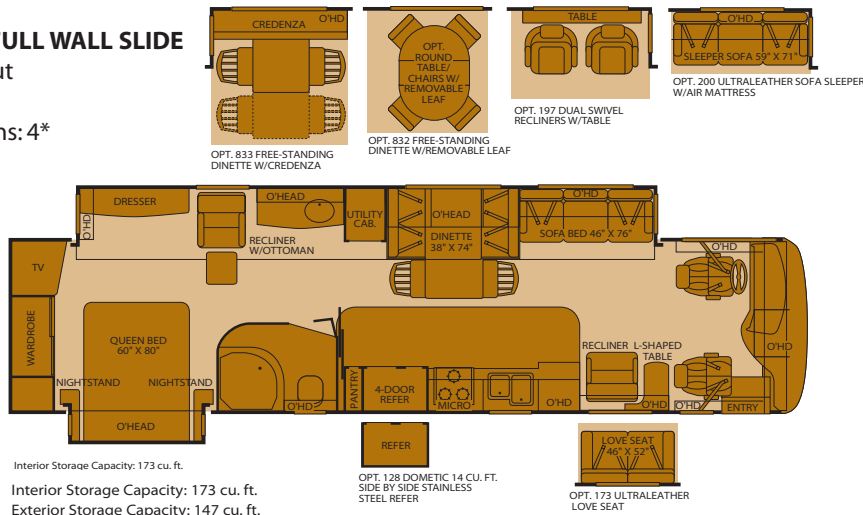
Seatbelt configuration may vary depending on options chosen.

39L
Quad Slide-Out
Sleeping
Accommodations: 4*



Interior Storage Capacity: 182 cu. ft.
Exterior Storage Capacity: 127 cu. ft.

39V
FEATURING A FULL WALL SLIDE
Double Slide-Out
Sleeping
Accommodations: 4*



Interior Storage Capacity: 173 cu. ft.
Interior Storage Capacity: 173 cu. ft.
Exterior Storage Capacity: 147 cu. ft.

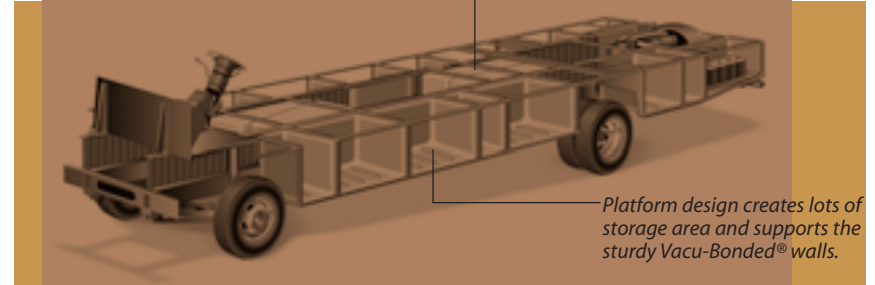
* Sleeping accommodations are based on designed sleeping areas and may be greater than Sleeping Capacity Weight Rating (SCWR) found on the Cargo Carrying Capacity label located in each RV. Sleeping accommodations are based on standard layout. Optional furniture may increase or decrease sleeping accommodations.

POWER PLATFORM CONSTRUCTION

Fleetwood's patented Power Platform begins with two 10-in. steel I-beams welded lengthwise to the chassis. From the beams, steel outriggers extend outward. Together, they create a basement for fluid tanks and storage while supporting the floor, walls and roof with a rigid metal frame. This complements the chassis to make it even stronger.

Holding tanks are positioned in the bottom center of the platform to enhance vehicle stability.

Holding tanks are enclosed between the upper and lower basement floors. This allows them to be heated to prevent freezing in cold weather.



Platform design creates lots of storage area and supports the sturdy Vacu-Bonded® walls.



Inter-locking Ceiling-to-Sidewall Connection

Inter-locking Floor-to-Sidewall Connection

Vacu-Bond® Sidewall Construction

Setting The Standard In Motor Home Quality.

Fleetwood® prototypes are exposed to thousands of miles of durability testing. Those components that don't survive are redesigned until they do. This sets our standard in safety and durability.

Fleetwood's patented Power Platform supports the body with a rigid frame that reinforces the chassis to make it even stronger. This allows Fleetwood to offer triple and quad slide-outs.

For each outer wall, Fleetwood uses one seamless, solid piece of its exclusive Tuff-Coat® fiberglass composite. It resists UV rays, cracks and impacts. Our products look newer longer and that's a big plus at resale time.

To assure a strong, weather-resistant structure, Fleetwood Vacu-bonds® all sidewalls, floors and ceilings to a durable aluminum or steel frame. The Vacu-bond® process is unmatched by many competitors.

Fleetwood sinks and shelves are designed to handle full-size kitchenware. Few competitors can say the same.

Drawings are for illustrative purpose only to highlight aspects of motor home construction. Actual motor home design depends on model and is subject to change.

Standard Features

Interior

THROUGHOUT

- **84" Interior Ceiling Height**
- **Dual Roof-Mounted A/C High Efficiency w/Solar Panel on Front A/C**
- **Solid Surface Countertops and Sink Covers**
- **Whole Coach Water Filtration System**

DRIVER CONVENIENCE

- **High-Output Auto A/C Heater Combo**
- **Power Driver/Front Passenger Sun Visors**
- Adjustable 3-Point Seat Belts at Driver & Front Passenger Seats
- AM/FM Radio w/CD/Cassette Player
- Auxiliary Start Circuit
- Backlit Switches & Gauges

LIVING ROOM

- **DVD Home Theater Sound System w/Hidden Surround-Sound Speakers**
- **Easy-Sweep Laminate Flooring at Entry**
- **Space Saving Coffee Table**

GALLEY

- **Deluxe Roller Bearing, Full Extension Drawer Guides**
- **Solid Surface Countertop, Sink & Range Covers**
- **Window Over Sink**
- 1.4 cu. ft. Convection Microwave Oven w/Stainless-Steel Front
- 3-Burner, High-Output Cooktop w/Sealed Burners
- Adjustable Cabinet Shelves (Select Cabinets)

BEDROOM

- **Cabinet Storage Above the Bed**
- **Restonic® Deluxe Pillow Top Innerspring Mattress**
- **Ventilated Rear Wardrobe w/Cedar Lining, Carpeted Floor & Wire Organizer**

BATHROOM

- **Cabinet Toe Kicks**
- Coordinated Bath Accessories
- Fan-Tastic® Power Roof Vent

SAFETY / CONVENIENCE

- Carbon Monoxide Detector/Alarm
- Fire Extinguisher

- 10-Gallon, Quick-Recovery Water Heater w/Direct Spark Ignition (Gas/Electric)
- 20,000/25,000 BTU Dual Furnaces
- 20,000/30,000 BTU Dual Furnaces (39V Only)
- Crown Molding w/Decorative Corner Caps
- Day/Night Pleated Shades
- Demand Water Pump w/Filter
- Plush Wall-to-Wall Carpet w/Carpet Pad
- Vinyl Padded Ceiling
- Wall Switches (Includes Switches for Ceiling Lights & Vents)
- Water Heater Bypass

- Battery Shut-Off Switch
- CB Radio Ready
- Cruise Control
- Driver/Front Passenger Ultraleather™ Captain's Chairs w/Reclining Back/Slide Controls/Power/Heated/Adjustable Arms
- Driver Side Manual Pull Down Shade
- Passenger Seat w/Power Foot Rest & Armrest w/Integrated Magazine Rack
- Radio Switch-Main/Auxiliary Power
- Soft-Surface Automotive Dash w/Area for Laptop GPS (Laptop & GPS Not Included)
- Tilt/Telescoping Steering Wheel

- **Ultraleather™ Sofa Bed**
- 27" Stereo TV in Overhead
- DSS/Stationary Auto Locating Satellite Dish (Covered)
- Flexsteel® Residential Seat Styling
- Hi-Fi VCR

- Coffee Maker
- Fan-Tastic® Power Roof Vent
- Glass Panel Cabinet Doors (Select Cabinets)
- Laminate Floor Tile
- Large, Double Stainless Steel Sink
- Light/Power Range Hood
- Norcold® 12 cu. ft. 4 Door Stainless Steel Refrigerator w/Ice Maker and Water Dispenser
- Raised-Panel Cabinet Doors

- 20" TV w/Swivel
- Bedroom Radio & Speakers
- Bedspread w/Decor Pillows
- Coffered Ceiling
- Mirrored Wardrobe Doors
- Remote Generator Start

- Hardwood Bath Door/Trims
- Laminate Floor Tile
- Lighted Assist Handle

- Propane Detector/Alarm
- Smoke Detector/Alarm

- J-Lounge Ultraleather™ Sofa (Select Models)
- Telephone Jack
- TV Antenna
- Ultraleather™ Swivel Recliner Free Standing (Select Models)

- Single-Lever Galley Faucet w/Pullout Sprayer
- Six-Person Pull-Out Dinette Table (Select Models)
- Slide-Out Dinette Bins w/Latches
- Soap Dispenser
- Under-Galley Shelving & Wastebasket

- Second Phone Jack
- Wardrobe Lighting

- Molded Shower Enclosure w/Skylight
- Porcelain Toilet w/Water Saver
- Stainless-Steel Sink

Exterior

THROUGHOUT

- **4-Point Automatic Hydraulic Levelers**
- **Choice of Three Colorway Graphics**
- **Full Body Paint**
- **Weather Pro Power Awnings (Patio Awning Includes Wind Sensor)**
- 120V/12V AC/DC Converter
- 120V/12V Wire Raceways
- 2000-Watt Inverter w/Remote
- 50-Amp Service
- 7.5kW Onan® Quiet Diesel Generator
- Awning Rail/Drip Molding (Both Sides)
- Dual Battery Charge Control
- Dual Pane Windows w/Screens
- Fiberglass Front Quarter Panels
- Fiberglass Front/Rear Cap

AUTOMOTIVE

- **350-HP Cat® C7 Engine w/Rear-Mounted Radiator**
- **Dual Fuel Fill (One on Each Side)**
- **Freightliner® Chassis**
- 10,000-lb. Weight-Distributing Hitch Receiver w/7-point Electrical Hook-up†
- Aluminum Rims

SAFETY / CONVENIENCE

- **Lighted Exterior Entry Assist Handle**
- 20' Sewer Hose
- Central Electrical Panel
- Doorside Patio Receptacle
- Entry Door w/Screen Door & Deadbolt Lock
- Four 6V/Deep-Cycle House Batteries
- Keyless Entry Remote
- Park Cable Receptacle

STORAGE

- **EZ-Storage Compartment on Living Area Slide-Outs**
- Continuous One-Piece Compartment Bulb Seal
- Gas-Lift Strut Supports
- Hidden, Stainless-Steel Latch Rods
- Insulated Aluminum Luggage Doors w/Single Paddle Metal Latches & Stainless-Steel Hinges
- Lighted Luggage Compartments

BODY STRUCTURE

- **Aluminum Interlocking Floor/Wall/Ceiling Framing**
- Coach Vibration Isolators
- Color Coordinated Royal Tuff-Ply Roof
- Heated Water & Holding

- w/High-Mounted Taillights
- Fiberglass Wheel Well Trims
- Front Protective Mask
- Remote/Heated Exterior Rear-View Mirrors
- Torque Windows in Bedroom
- Utility Compartment w/Exterior Shower
- Water Pump Switch (3 Locations)

† The chassis manufacturer recommends the installation of a supplemental brake control system to activate the brakes on the vehicle or trailer you are towing. Hitch receiver ratings expressed are maximum for the hitch receiver installed and may require the purchase of additional equipment that is dependant on the weight of the towed load. Consult with hitch receiver manufacturer for further information.

- Porch Light (Doorside)
- Power Entry Step
- Roof Ladder
- Toilet Tank San-T-Flush™ System

- Rotomolded Polyethylene Luggage Compartments
- Spare Tire Compartment (N/A 39V) (Spare Tire Not Included)

- Tank Compartments
- Radius Roof w/Ducted A/C

Options

THROUGHOUT

- AM/FM Stereo w/6-Disc CD Player w/Sirius® Satellite Radio (6 Month Subscription Included)
- Automatic Generator Start System
- Central Vacuum System
- CSA Package
- Heat Pumps
- Spot Light w/Remote Control
- Washer/Dryer
- Water Heater 16 Gallon Output

GALLEY

- 14 cu. ft. Dometic® Frost Free Refrigerator
- 3-Burner Range w/Oven
- Free Standing Dinette w/Credenza
- Free Standing Table & Chairs

LIVING ROOM

- Dual Free-Standing Ultraleather™ Recliners
- Recliner w/Table (39L)
- Ultraleather™ Sofa Sleeper w/Air Mattress

EXTERIOR

- Entertainment Center w/20" TV and Stereo (Select Models)
- Pull-Out Grill and Kitchenette (Select Models)

BEDROOM

- Bedroom Entertainment Center w/27" TV and Home Theatre (39L)
- Desk (39L)
- Restonic® Rest-On-Air Dual-Control Mattress

Fleetwood Advantages

- **Complete TuffPEX® Plumbing System**
- **Energy Management System (EMS) w/Soft-Start**

- **Vacu-Bond® Upper/Lower Floors**
- **Vacu-Bond® Walls w/Smooth High-Gloss Exterior Tuff-Coat® Fiberglass**

Fleetwood Exclusives

- **Power Platform Construction**
- **Full Wall Slide (Patent Pending)**

* Bold Denotes Fleetwood's Key Features

Weights and Measurements

FREIGHTLINER® CHASSIS	39C	39J	39L	39S	39V
Engine Displacement (Liters)	7.2	7.2	7.2	7.2	7.2
Wheelbase (Inches)	252	252	252	252	252
GVWR (lbs) ¹	31,000	31,000	31,000	31,000	31,000
Front GAWR (lbs) ²	12,000	12,000	12,000	12,000	12,000
Rear GAWR (lbs) ²	19,000	19,000	19,000	19,000	19,000
Base Weight (lbs) ³	22,605	22,605	22,900	22,605	22,900
GCWR (lbs) ⁴	41,000	41,000	41,000	41,000	41,000
Hitch Rating Weight (lbs) [†]	10,000	10,000	10,000	10,000	10,000
Tongue Weight (lbs) [†]	1,000	1,000	1,000	1,000	1,000
Fuel Capacity (gal)	90	90	90	90	90

DIMENSIONS AND CAPACITIES

Overall Length ⁵	39' 2"	39' 2"	39' 2"	39' 2"	39' 2"
Overall Height (with A/C)	12' 8"	12' 8"	12' 8"	12' 8"	12' 8"
Overall Width (maximum) ^{6,7}	102"	102"	102"	102"	102"
Interior Height (maximum)	84"	84"	84"	84"	84"
Interior Width (maximum)	96"	96"	96"	96"	96"
Fresh Water Holding Tank (gal)	84	86	86	86	86
Grey Water Holding Tank (gal)	50	50	50	50	50
Black Water Holding Tank (gal)	50	50	50	50	50
Appliance Propane Tank (gal) (WC) ⁸	38	38	38	38	38
Water Heater Tank (gal)	10	10	10	10	10

Liquid Weight Reference: Water (gal) = (8.3 lbs/3.8 kgs) Fuel (gal) = (7.1 lbs/3.2 kgs) Propane (gal) = (4.2 lbs/1.9 kgs)

Metric Conversion: Multiply pounds x 0.453 to obtain kilograms. Multiply gallons x 3.785 to obtain liters.

CHASSIS

Frame: Freightliner® XC-Series	Transmission: Allison® 3000 MH, 6-Speed w/Electronic Shifter
Engine: Cat® C7 350 HP	Alternator Amps: 160-Amp Delco
Torque: 860 lb-ft @ 1440 RPM	Tires: Goodyear® 275/70R 22.5H

1. GVWR (Gross Vehicle Weight Rating) is the maximum permissible weight of this fully loaded motor home. The GVWR is equal to or greater than the sum of the unloaded vehicle weight plus the cargo carrying capacity.

2. GAWR (Gross Axle Weight Rating) is the maximum permissible loaded weight a specific axle is designed to carry.

3. Base Weight is the estimated weight of the motor home without fuel, options, water, cargo or passengers.

4. GCWR (Gross Combined Weight Rating) is the value specified by the motor home manufacturer as the maximum allowable loaded weight of this motor home with its towed vehicle. Towing and braking capacities may be different. Refer to Fleetwood and chassis manufacturer's manuals for complete information.

5. Length taken from front bumper to rear bumper (excludes accessories).

6. Excludes safety equipment and awnings.

7. Motor homes feature a body-width over 96" which will restrict your access to certain roads. Before purchasing, you should research any state and/or province road laws which may affect your usage.

8. Tank manufacturer's listed water capacity (WC). Actual propane capacity is 80% of water listing as required by the safety code.

† The chassis manufacturer recommends the installation of a supplemental brake control system to activate the brakes on the vehicle or trailer you are towing. Hitch receiver ratings expressed are maximum for the hitch receiver installed and may require the purchase of additional equipment that is dependant on the weight of the towed load. Consult with hitch receiver manufacturer for further information.

IMPORTANT — PLEASE READ: Product information, photography and illustrations included in this publication were as accurate as possible at the time of printing. For further product information and changes, please visit our website at www.fleetwoodrv.com or contact your local Fleetwood dealer. Prices, materials, design and specifications are subject to change without notice. All weights, fuel, liquid capacities and dimensions are approximate. Fleetwood has designed its recreational vehicles to provide a variety of uses for its customers. Each vehicle features optimal seating, sleeping, storage and fluid capacities. The user is responsible for selecting the proper combination of loads (i.e. occupants, equipment, fluids, cargo, etc.) to ensure that the vehicle's capacities are not exceeded.

What Drives You?

Maybe it's feeling like you're the only one on Earth. Perhaps it's the unique sense of closeness with the great outdoors. Or, it might be the joy that comes from spending quality time with family and friends. Whatever the reason, we know that you have a strong drive to experience everything that comes with spending time on the road. And for more than 50 years, we've shared that passion with you. Because we're RV enthusiasts ourselves, you can see our passion in the vehicles we design and build. Own a Fleetwood, and you'll feel like you're not just traveling, but embarking on an experience unlike any other. Set your own course for adventure and get out there and explore the world around you. Once you do, you'll see what it is that drives us — it's you.

RV OWNERCARE* is a limited one-year/15,000-mile coach warranty and three-year/50,000-mile structural warranty, whichever occurs first, and it is fully transferable for the first 12 months. RV OWNERCARE is one of the RV industry's most comprehensive programs and includes systems, appliances, components and construction, with no deductible and no service charge. RV OWNERCARE coverage is provided from a company that will be around in the future to service your needs. See your nearest Fleetwood dealer for a full explanation of benefits and restrictions.

FLEETWOOD TRAVELCADE CLUB As a Fleetwood owner, you're eligible to become a member of our owners' group, Fleetwood Travelcade Club. It's a perfect way to meet other Fleetwood owners who love to travel across America and share in the RV lifestyle. Call (877) 577-2560 or visit www.fleetwood.com/clubs to learn more and join the fun!

FLEETWOODRV.COM To locate a dealer near you, visit our website or call 1-800-444-4905. We can also be contacted at Fleetwood Customer Relations, P.O. Box 7638, Riverside, CA 92513-7638.

IMPORTANT—PLEASE READ Product information, photography and illustrations included in this publication were as accurate as possible at the time of printing. For further product information and changes, please visit our website at www.fleetwoodrv.com or contact your local Fleetwood dealer. Prices, materials, design and specifications are subject to change without notice. All weights, fuel, liquid capacities and dimensions are approximate. Fleetwood has designed its recreational vehicles to provide a variety of uses for customers. Each vehicle features optimal seating, sleeping, storage and fluid capacities. The user is responsible for selecting the proper combination of loads (i.e.: occupants, equipment, fluids, cargo, etc.) to ensure that the vehicle's capacities are not exceeded.

Your local Fleetwood dealer is:



www.fleetwoodrv.com

*For complete info see your Fleetwood dealer. ©2005. Fleetwood Enterprises, Inc. Printed in the USA. Inventory control number PRO06F2 10/05.

